



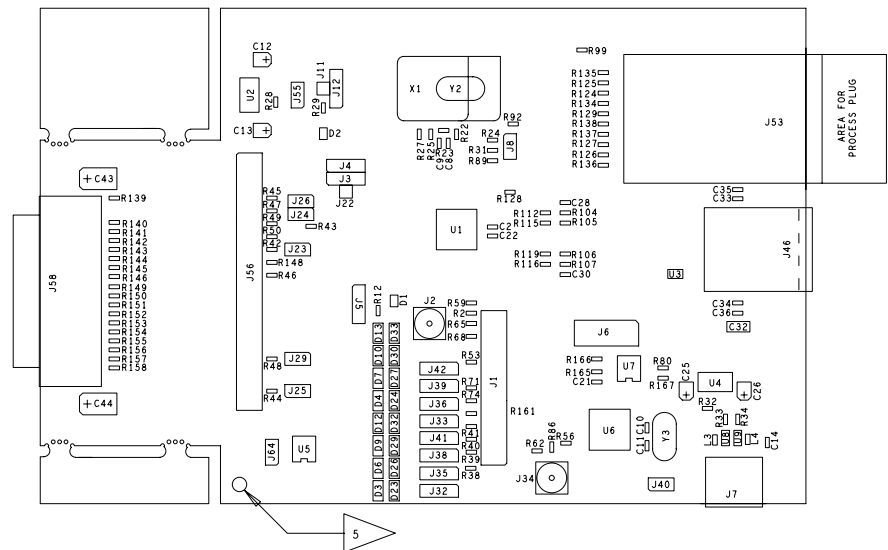
NOTES: UNLESS OTHERWISE SPECIFIED

1. SCHEMATIC DIAGRAM FOR THIS PRODUCT IS 870600582-X00.
2. ELECTRICAL COMPONENTS ARE IDENTIFIED BY REFERENCE DESIGNATOR ON ASSEMBLY DRAWING, BILL OF MATERIALS, AND SCHEMATIC DIAGRAM.
3. APPLICABLE BILL(S) OF MATERIAL FOR THIS ASSEMBLY DRAWING: 980600582-X00.
4. SOLDER PASTE GERBER PATTERN 880600582-00X MAY BE MODIFIED PER ASSEMBLY REQUIREMENTS.
5.  DENOTES ORIGIN 0x AND 0y FOR COMPONENT POSITIONS PER PLACE.TXT FILE.
6. ALL VENDOR IN-PROCESS MARKING, QA STAMPS, ETC., MUST BE PLACED ON THE BOTTOM SIDE OF BOARD.
7. EACH ASSEMBLED BOARD MUST BE PACKAGED IN AN ESD BAG AND SEALED WITH AN ESD LABEL.

REVISIONS			
REV	DESCRIPTION	APPRVD	DATE
B	INITIAL RELEASE		02-25-11

NSC CONFIDENTIAL  
DO NOT COPY, DISPLAY, OR USE DRAWING  
WITHOUT NSC AUTHORIZATION

DO NOT SCALE DRAWING		 <b>National Semiconductor™</b> INTERFACE DIVISION	
SIGNATURES	DATE		
DRAWN BY:			
CHECKED BY:			
APPRVD BY:		PCB ASSEMBLY DRAWING DP83630 SQ48A PHYTER HP TP/FX DEMO	
APPRVD BY:		B	DWG 980600582-002 B
		SCALE: NONE	SHEET 1 OF 3 REV

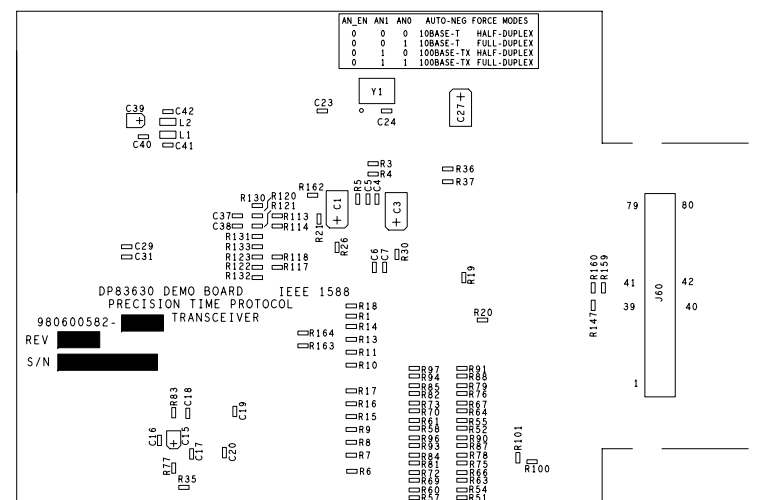


VIEWED FROM TOP SIDE



PCB ASSEMBLY DRAWING  
DP83630 SQ48A  
PHYTER HP TP/FX DEMO

NSC CONFIDENTIAL DO NOT COPY, DISPLAY, OR USE DRAWING WITHOUT NSC AUTHORIZATION	B	DWG 980600582-002		B
		SCALE: NONE	SHEET 2 OF 3	
				REV



VIEW FROM BOTTOM SIDE



DP83630 SQ48A  
PHYTER HP TP/FX DEMO

PHYTER HP TP/FX DEMO

NSC CONFIDENTIAL  
DO NOT COPY, DISPLAY, OR USE DRAWING  
WITHOUT NSC AUTHORIZATION

NG	B	DWG 980600582-002			B
	SCALE: NONE		SHEET 3 OF 3		REV