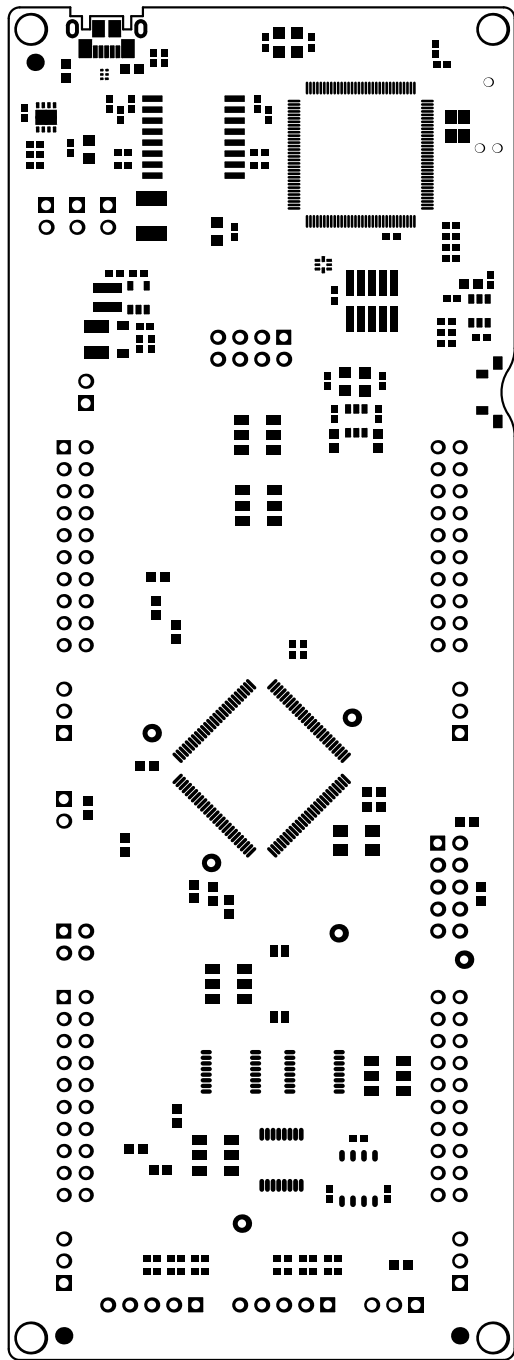
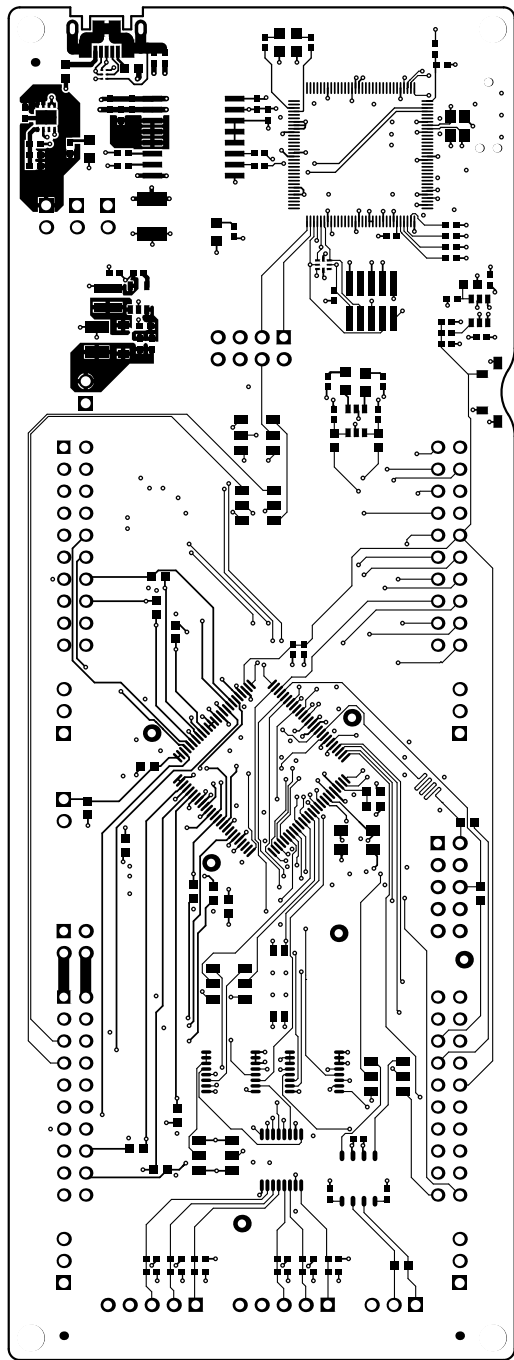


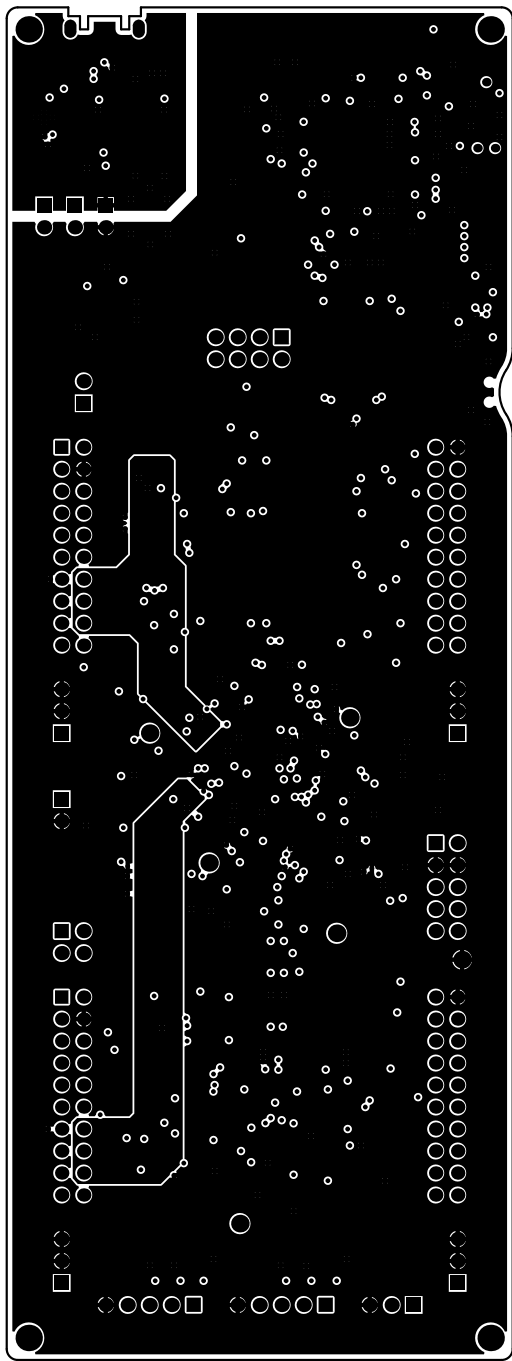
ALL ARTWORK VIEWED FROM TOP SIDE	BOARD #: MCU025	REV: B	SUN REV: Not In VersionControl
LAYER NAME = Top OverlayInformation	TID #: N/A		
PLOT NAME = Top Overlay	GENERATED : 2/11/2020 11:17:06 AM		TEXAS INSTRUMENTS



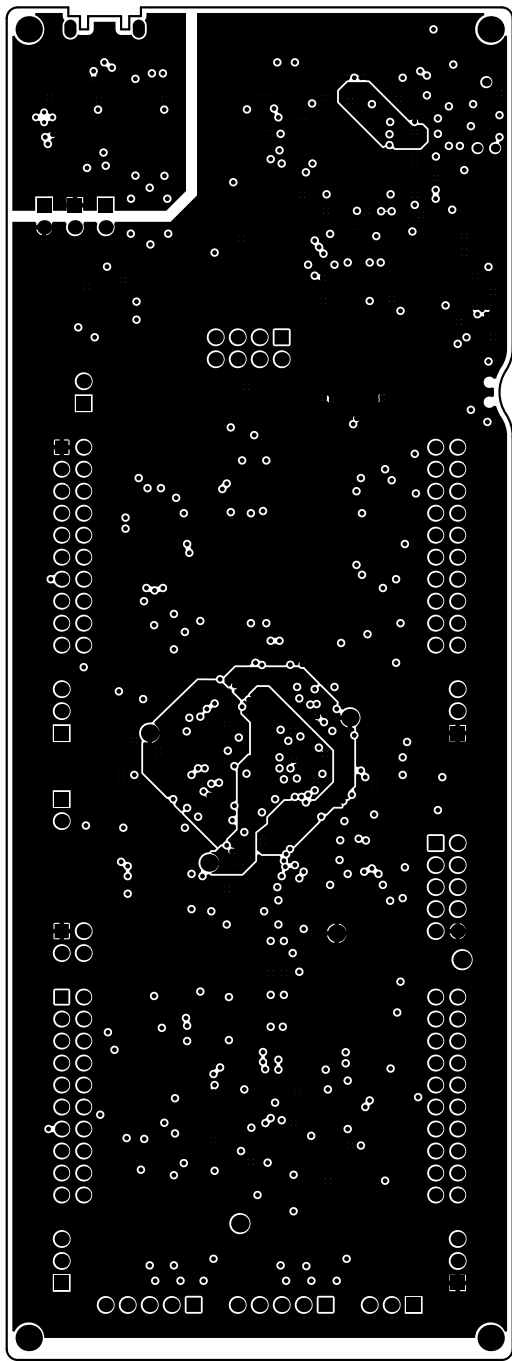
ALL ARTWORK VIEWED FROM TOP SIDE	BOARD #: MCU025	REV: B	SUN REV: Not In VersionControl
LAYER NAME = Top Solder Mask	TID #: N/A		
PLOT NAME = Top Solder Mask	GENERATED : 2/11/2020 11:17:08 AM		TEXAS INSTRUMENTS



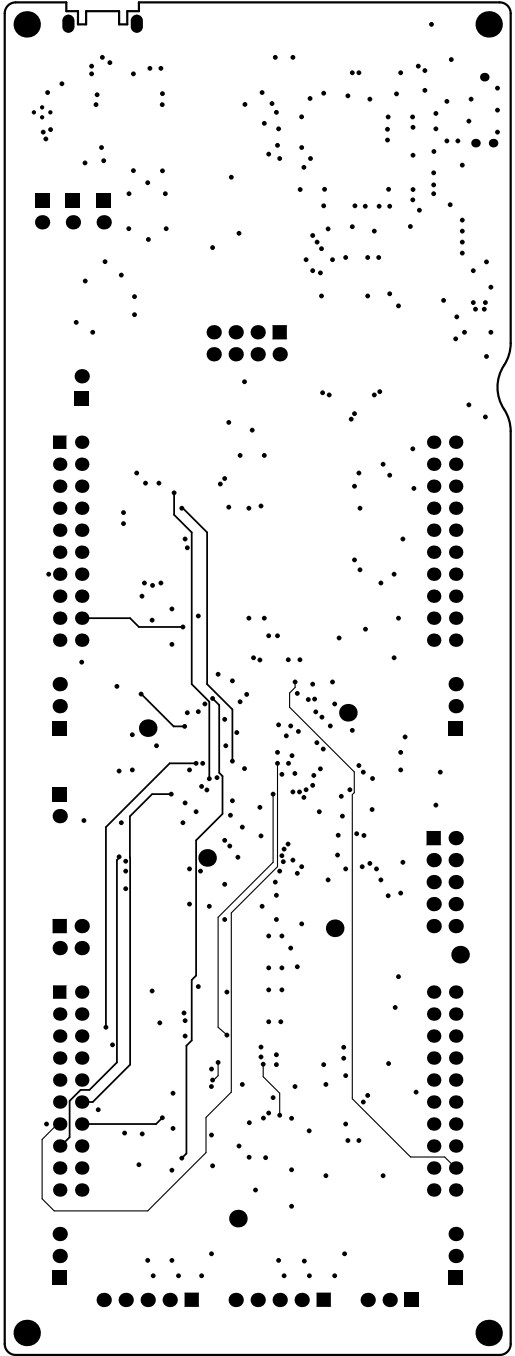
ALL ARTWORK VIEWED FROM TOP SIDE	BOARD #: MCU025	REV: B	SUN REV: Not In VersionControl
LAYER NAME = Top Layer	TID #: N/A		
PLOT NAME = Top Layer	GENERATED : 2/11/2020 11:17:10 AM		TEXAS INSTRUMENTS



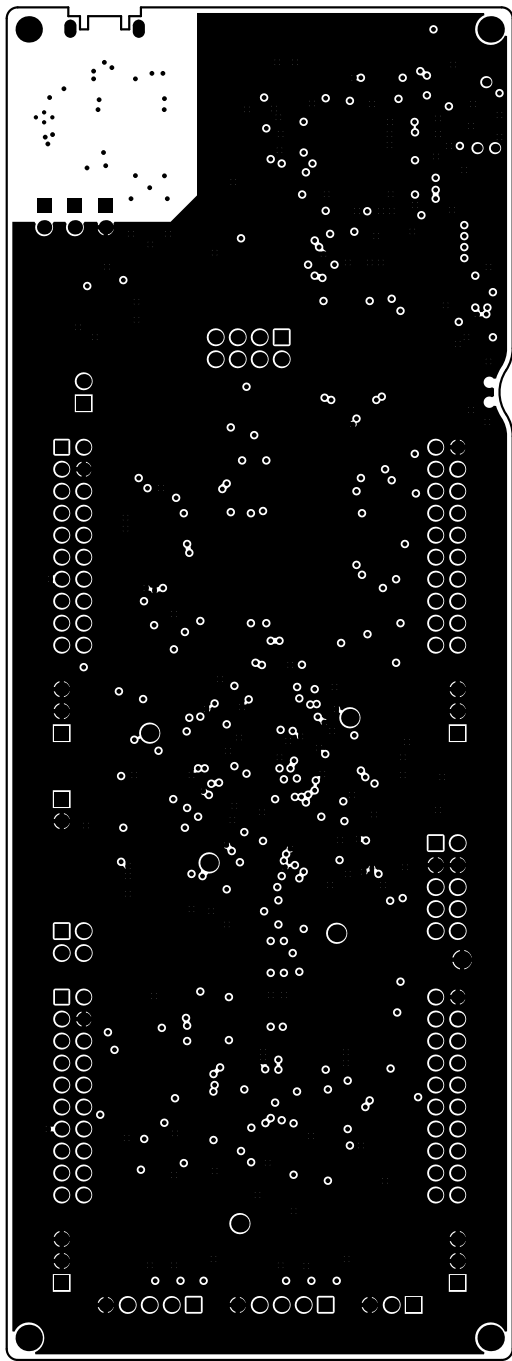
ALL ARTWORK VIEWED FROM TOP SIDE	BOARD #: MCU025	REV: B	SUN REV: Not In VersionControl
LAYER NAME = 0 ND Gerber Information	TID #: N/A		
PLOT NAME = Signal 1	GENERATED : 2/11/2020 11:17:12 AM		TEXAS INSTRUMENTS



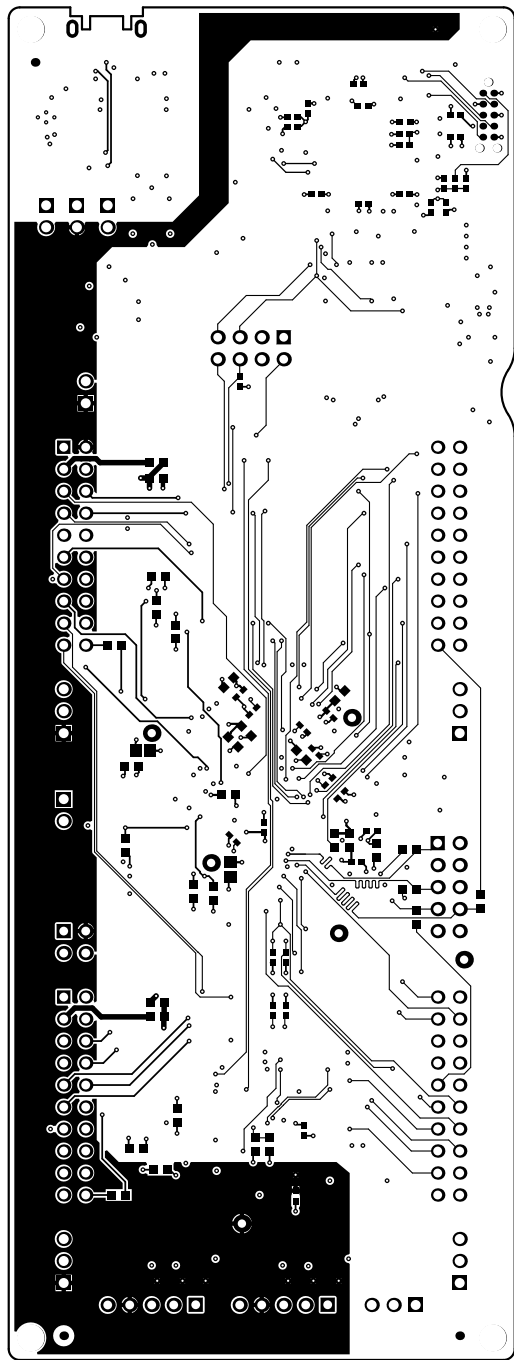
ALL ARTWORK VIEWED FROM TOP SIDE	BOARD #: MCU025	REV: B	SUN REV: Not In VersionControl
LAYER NAME = MR Gerber Information	TID #: N/A		
PLOT NAME = Signal 2	GENERATED : 2/11/2020 11:17:15 AM		TEXAS INSTRUMENTS



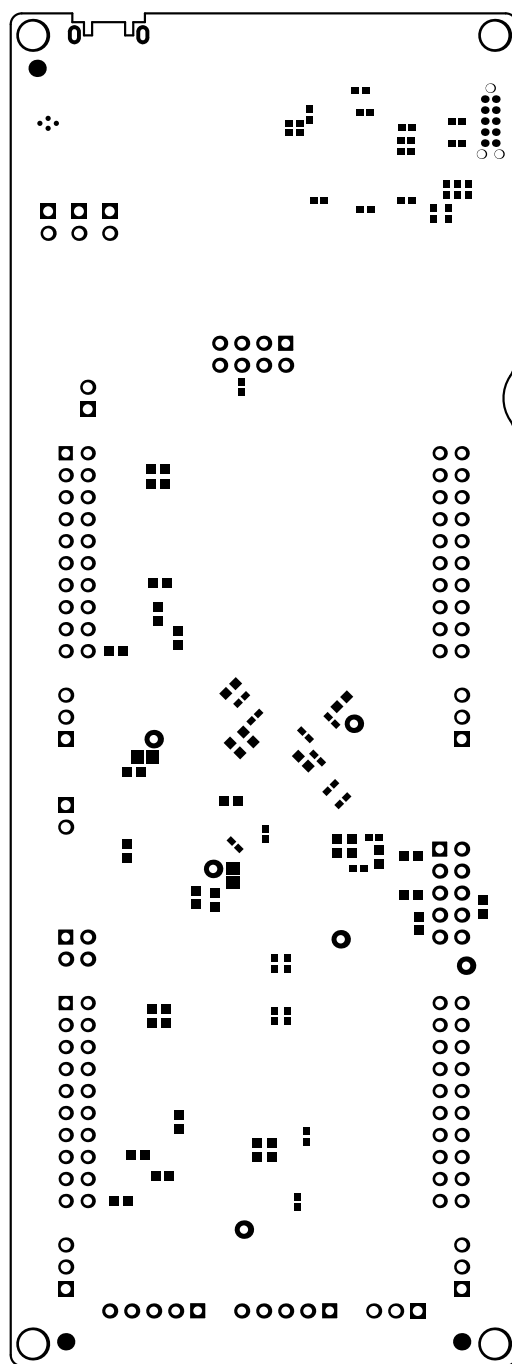
ALL ARTWORK VIEWED FROM TOP SIDE	BOARD #: MCU025	REV: B	SUN REV: Not In VersionControl
LAYER NAME = Middle Signal 3	TID #: N/A		
PLOT NAME = Signal 3	GENERATED : 2/11/2020 11:17:17 AM		TEXAS INSTRUMENTS



ALL ARTWORK VIEWED FROM TOP SIDE	BOARD #: MCU025	REV: B	SUN REV: Not In VersionControl
LAYER NAME = 002 Gerber Information	TID #: N/A		
PLOT NAME = Signal 4	GENERATED : 2/11/2020 11:17:19 AM		TEXAS INSTRUMENTS

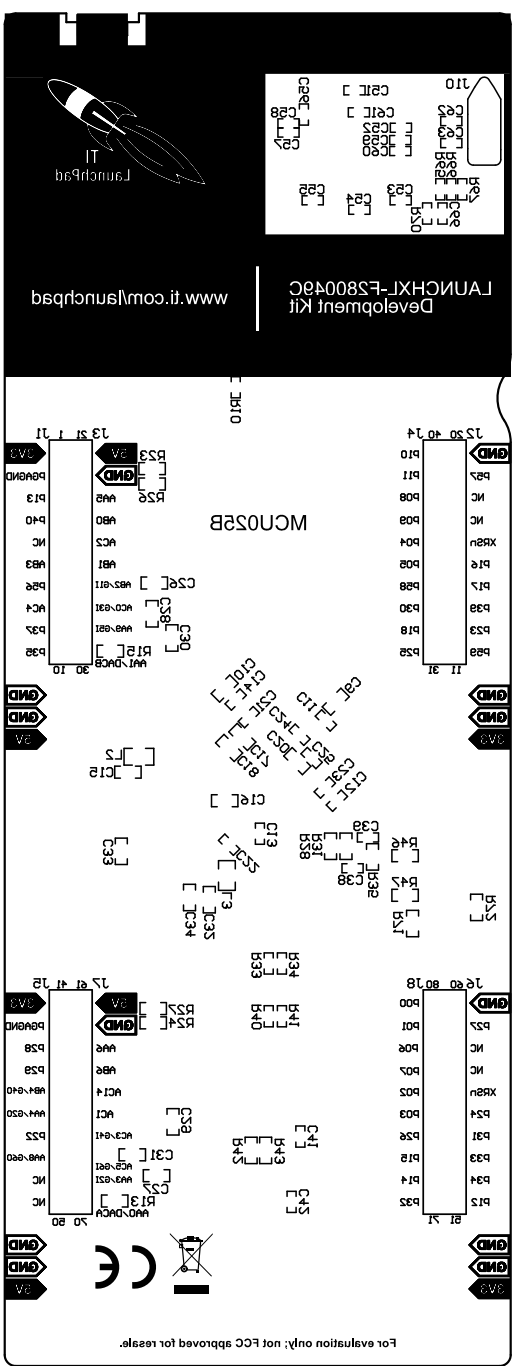


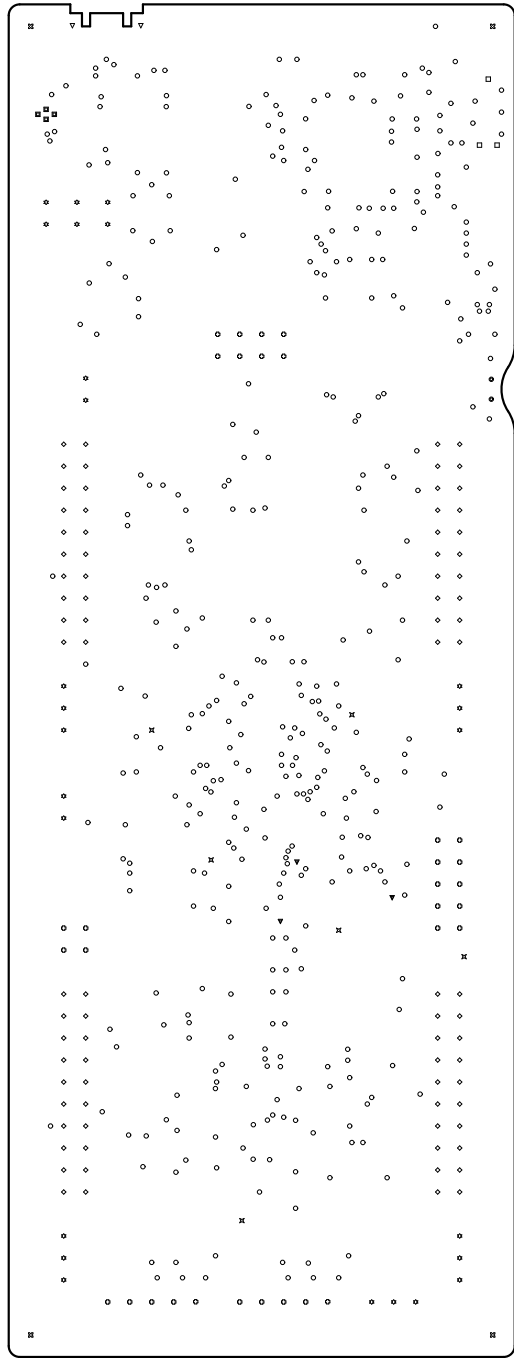
ALL ARTWORK VIEWED FROM TOP SIDE	BOARD #: MCU025	REV: B	SUN REV: Not In VersionControl
LAYER NAME = Bot16or6gnshinformation	TID #: N/A		
PLOT NAME = Bottom Layer	GENERATED : 2/11/2020 11:17:22 AM		TEXAS INSTRUMENTS



ALL ARTWORK VIEWED FROM TOP SIDE	BOARD #: MCU025	REV: B	SUN REV: Not In VersionControl
LAYER NAME = Bottom Solder Mask Solder Information	TID #: N/A		
PLOT NAME = Bottom Solder Mask	GENERATED : 2/11/2020 11:17:25 AM		TEXAS INSTRUMENTS

ALL ARTWORK VIEWED FROM TOP SIDE	BOARD #: MCU025	REV: B	SUN REV: Not In VersionControl
LAYER NAME = Bottom Overlay Bottom OverlayInformation	TID #: N/A		
PLOT NAME = Bottom Overlay	GENERATED : 2/11/2020 11:17:28 AM		TEXAS INSTRUMENTS

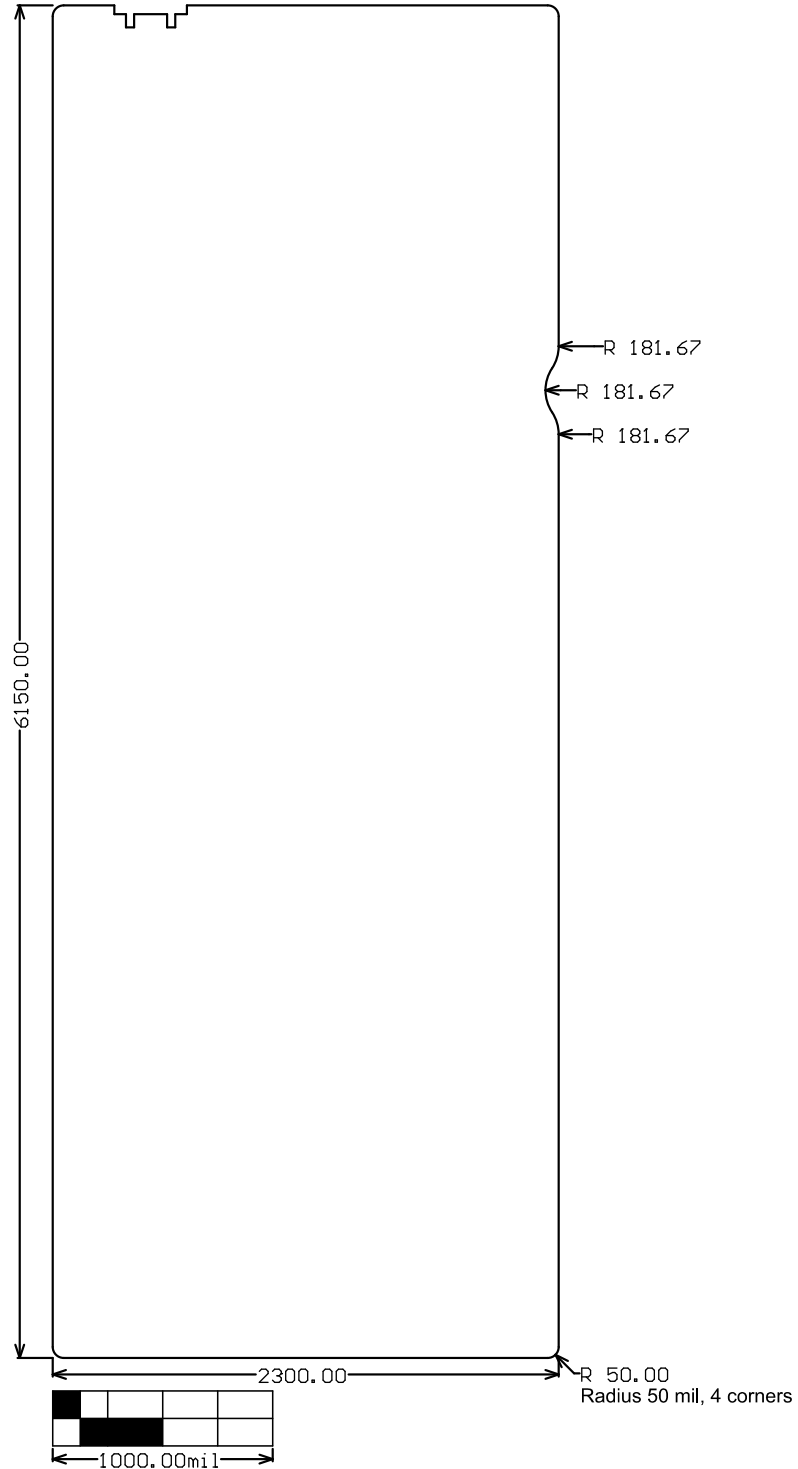




Symbol	Quantity	Finished Hole Size	Plated	Hole Type	Drill Layer Pair	Hole Tolerance
⊙	2	35.43mil (0.900mm)	NPTH	Round	Top Signal - Bottom Signal	±5.00mil
□	3	39.00mil (0.991mm)	NPTH	Round	Top Signal - Bottom Signal	
⊗	4	125.00mil (3.175mm)	NPTH	Round	Top Signal - Bottom Signal	
■	4	7.87mil (0.200mm)	PTH	Round	Top Signal - Bottom Signal	
○	397	10.00mil (0.254mm)	PTH	Round	Top Signal - Bottom Signal	
▼	3	10.00mil (0.254mm)	PTH	Round	Top Signal - Bottom Signal	
✕	6	37.99mil (0.965mm)	PTH	Round	Top Signal - Bottom Signal	
⊕	32	40.00mil (1.016mm)	PTH	Round	Top Signal - Bottom Signal	
◇	80	40.16mil (1.020mm)	PTH	Round	Top Signal - Bottom Signal	
⚙	25	45.28mil (1.150mm)	PTH	Round	Top Signal - Bottom Signal	
▽	2	23.62mil (0.600mm)	PTH	Slot	Top Signal - Bottom Signal	
558 Total						

Slot definitions : Routed Path Length = Calculated from tool start centre position to tool end centre position.
Hole Length = Routed Path Length + Tool Size = Slot length as defined in the PCB layout

ALL ARTWORK VIEWED FROM TOP SIDE	BOARD #: MCU025	REV: B	SUN REV: Not In VersionControl
LAYER NAME = Drill Drawing	TID #: N/A		
PLOT NAME = Drill Drawing	GENERATED : 2/11/2020 11:17:32 AM		TEXAS INSTRUMENTS



ALL ARTWORK VIEWED FROM TOP SIDE	BOARD #: MCU025	REV: B	SUN REV: Not In VersionControl
LAYER NAME = M21 Board Dimensions	TID #: N/A		
PLOT NAME = Board Dimensions	GENERATED : 2/11/2020 11:17:36 AM		TEXAS INSTRUMENTS