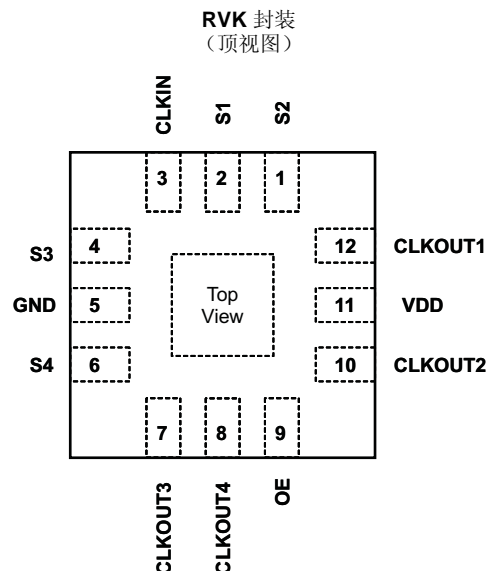


用于 3D 显示的 1 个至 4 个可配置时钟缓冲器

查询样品: **CDC1104**

特性

- 输入参考时钟 **120Hz–240Hz**
- 输出时钟 **(Fin/2) 60Hz–120Hz**
- 输出缓冲器驱动强度: **8mA**
- **4 个时钟输出**
- **4 个选择时钟输出相位**的控制引脚
- 电源电压: **3.8V 至 5.5V**
- 工作温度范围: **–40°C 至 85°C**
- **ESD 保护等级超过 JESD 22 标准的要求**
 - **2000-V 人体模式 (A114-B)**
 - **500-V 充电设备模式 (C101)**
- 封装方式
 - **12-引脚 QFN (3mm x 3mm)**



说明

CDC1104 是一款 1 个至 4 个可配置时钟缓冲器。此器件接受一个输入参考时钟并创建 4 个缓冲输出时钟，这些时钟的输出频率等于输入时钟频率的1.5倍。四个控制输入，时钟输出的S1，S2，S3，S4可配置相位。

订购信息⁽¹⁾

T _A	封装 ⁽²⁾		可订购部件号	正面标记
–40°C 至 85°C	RVK	卷带包装	CDC1104RVKR	ZT

(1) 有关最新的封装和订购信息，请参阅本文档结尾的“封装选项附录”，或访问 TI 网站: www.ti.com。

(2) 封装图样、散热数据和符号可登录 www.ti.com/packaging 获取。



Please be aware that an important notice concerning availability, standard warranty, and use in critical applications of Texas Instruments semiconductor products and disclaimers thereto appears at the end of this data sheet.



These devices have limited built-in ESD protection. The leads should be shorted together or the device placed in conductive foam during storage or handling to prevent electrostatic damage to the MOS gates.

PIN FUNCTIONS

NO.	NAME	TYPE ⁽¹⁾	DESCRIPTION
1	S2	I	Output clock select. Refer to Output Clock Selection Table
2	S1	I	Output clock select. Refer to Output Clock Selection Table
3	CLKIN	I	Clock Input
4	S3	I	Output clock select. Refer to Output Clock Selection Table
5	GND	P	Ground
6	S4	I	Not internally connected
7	CLKOUT3	O	Buffered CLK Output. Refer to Output Clock Selection Table
8	CLKOUT4	O	Buffered CLK Output. Refer to Output Clock Selection Table
9	OE	I	Chip Enable
10	CLKOUT2	O	Buffered CLK Output. Refer to Output Clock Selection Table
11	VDD	P	Inverted output. No counter delay
12	CLKOUT1	O	Buffered CLK Output. Refer to Output Clock Selection Table

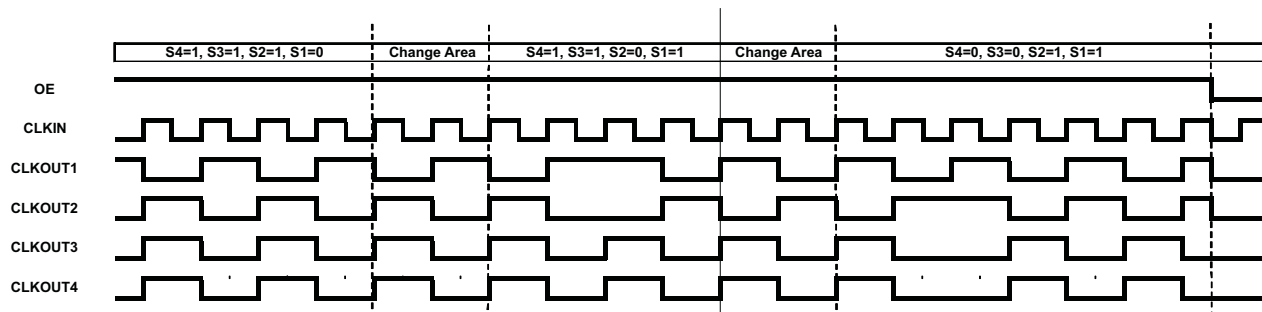
(1) G = Ground, I = Input, O = Output, P = Power

TRUTH TABLE

INPUTS						OUTPUTS			
OE	CLKIN	S4	S3	S2	S1	CLKOUT4	CLKOUT3	CLKOUT2	CLKOUT1
0	CLK	X	X	X	X	L	L	L	L
1	CLK	0	0	0	0	L	L	L	L
1	CLK	0	0	0	1	CLK\	CLK\	CLK\	CLK
1	CLK	0	0	1	0	CLK\	CLK\	CLK	CLK\
1	CLK	0	0	1	1	CLK\	CLK\	CLK	CLK
1	CLK	0	1	0	0	CLK\	CLK	CLK\	CLK\
1	CLK	0	1	0	1	CLK\	CLK	CLK\	CLK
1	CLK	0	1	1	0	CLK\	CLK	CLK	CLK\
1	CLK	0	1	1	1	CLK\	CLK	CLK	CLK
1	CLK	1	0	0	0	CLK	CLK\	CLK\	CLK\
1	CLK	1	0	0	1	CLK	CLK\	CLK\	CLK
1	CLK	1	0	1	0	CLK	CLK\	CLK	CLK\
1	CLK	1	0	1	1	CLK	CLK\	CLK	CLK
1	CLK	1	1	0	0	CLK	CLK	CLK\	CLK\
1	CLK	1	1	0	1	CLK	CLK	CLK\	CLK
1	CLK	1	1	1	0	CLK	CLK	CLK	CLK\
1	CLK	1	1	1	1	CLK	CLK	CLK	CLK

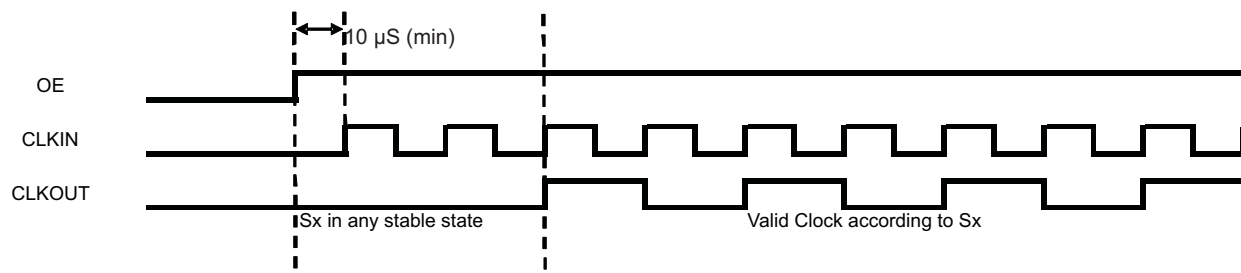
Timing Diagram For Glitch Free Operation

Transition of outputs from any state to any other state



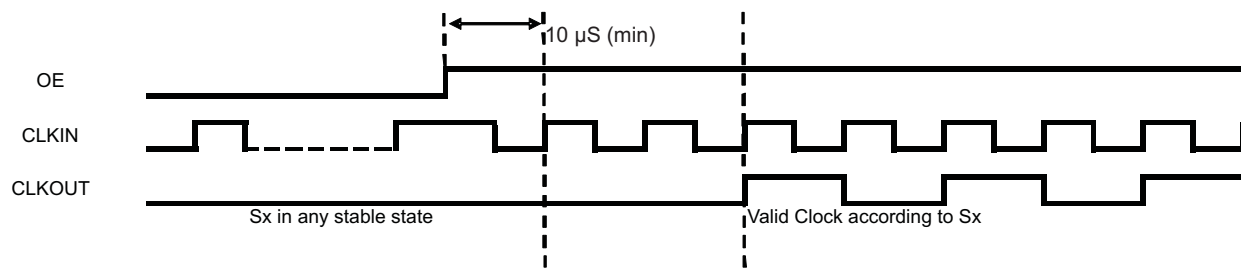
NOTE: Transition to new state will happen after a latency of one output clock cycle after completing the present output clock cycle. Transition to new state will happen after a latency of up to 3 input clock cycles excluding the input cycle where the transition has occurred.

Power Up



NOTE: Transition to new state will happen after a latency of 2 input clock cycles excluding the input cycle where the transition has occurred.

OE Operation



NOTE: Transition to new state will happen after a latency of 2 input clock cycles excluding the input cycle where the transition has occurred.

CDC1104

ZHCS500 – SEPTEMBER 2011

www.ti.com.cn

ABSOLUTE MAXIMUM RATINGS⁽¹⁾

over operating free-air temperature range (unless otherwise noted)

		MIN	MAX	UNIT
V_{CC}	Supply voltage range	–0.3	6	V
V_I	Input voltage range ⁽²⁾	–0.3	6	V
V_O	Output voltage range in the high or low state ⁽²⁾	–0.3	6	V
I_{IK}	Input clamp current	$V_I < 0$		±20 mA
I_{OK}	Output clamp current	$V_O < 0$		±20 mA
I_{OL}	Continuous output Low current	$V_O = 0$ to V_{CC}		±20 mA
I_{OH}	Continuous output High current	$V_O = 0$ to V_{CC}		±20 mA
T_{stg}	Storage temperature range	–65	150	°C

- (1) Stresses beyond those listed under Absolute Maximum Ratings may cause permanent damage to the device. These are stress ratings only, and functional operation of the device at these or any other conditions beyond those indicated under Recommended Operating Conditions is not implied. Exposure to absolute-maximum-rated conditions for extended periods may affect device reliability.
- (2) The input negative-voltage and output voltage ratings may be exceeded if the input and output current ratings are observed.

THERMAL CHARACTERISTICS

over operating free-air temperature range (unless otherwise noted)

		VALUE	UNIT
θ_{JA}	Package thermal impedance ⁽¹⁾ RVK Package	72.2	°C/W

- (1) The package thermal impedance is calculated in accordance with JESD 51-7.

RECOMMENDED OPERATING CONDITIONS

over operating free-air temperature range (unless otherwise noted)

	MIN	MAX	UNIT
V_{CC}	Supply voltage range	3.8	5.5 V
V_{IH}	High-Level Input Voltage	1.6	5.5 V
V_{IL}	Low-Level Input Voltage	0	0.8 V
I_{IH}	High-level input current		1 µA
I_{IL}	Low-level input current		1 µA
V_I		0	5.5 V
V_O		0	V_{CC} V
I_{OH}	High-level output current		–8 mA
I_{OL}	Low-level output current		8 mA
T_A	Operating free-air temperature	–40	85 °C

ELECTRICAL CHARACTERISTICS

over operating free-air temperature range (unless otherwise noted)

PARAMETER	TEST CONDITIONS	V _{CC}	T _A = –40°C to 85°C			UNIT
			MIN	TYP	MAX	
V _{OH}	I _{OH} = –8 mA	3.8 V	V _{CC} –0.6			V
		5 V	V _{CC} –0.4			V
V _{OL}	I _{OL} = 8 mA	3.8 V	0.40			V
		5 V	0.40			V
I _I (CLKIN, OE, Sx)	V _I = GND to 4 V	5.5 V	1			μA
I _{CC} (Disabled)	V _{IO} = 0 V or 5.5V, OE = Low	3.8 V to 5.5 V	0.5			2 μA
I _{DD} (Dynamic)	OE = 5.5 V; Sx = 0 V, 5.5 V; CLKIN = 0 V, 5.5 V	5.5 V	20			50 μA
	OE = 3.0 V; Sx = 0 V, 3.0 V; CLKIN = 0 V, 3.0 V	5.5 V	20			50 μA
	OE = 1.6 V; Sx = 0 V, 1.6 V; CLKIN = 0 V, 1.6 V	5.5 V	20			50 μA
C _I (CLKIN, OE, Sx)	V _I = V _{CC} or GND		7			pF

SWITCHING CHARACTERISTICS

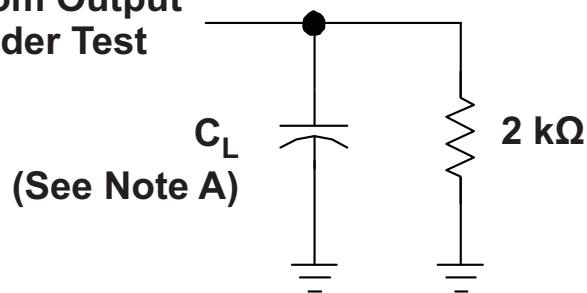
over operating free-air temperature range (unless otherwise noted)

PARAMETER	FROM (INPUT) TO(OUTPUT) V _{CC}	T _A = –40°C to 85°C			UNIT
		MIN	TYP	MAX	
F _{CLKIN}	Input clock frequency	120		240	Hz
F _{CLKOUT}	Output clock frequency	F _{CLKIN} /2		F _{CLKIN} /2	Hz
t _{RISE} / t _{FALL}	Output rise/fall time			10	μs
t _{RISE} / t _{FALL}	Input rise/fall time			50	μs
Input Duty Cycle	Input duty cycle	49%	50%	51%	
Output Duty Cycle	Output duty cycle	49%	50%	5%1	
t _{SU}	Setup time on Sx	60			μs
t _H	Hold time on Sx	60			μs
t _{SKEW}	CLKOUTx skew			10	μs

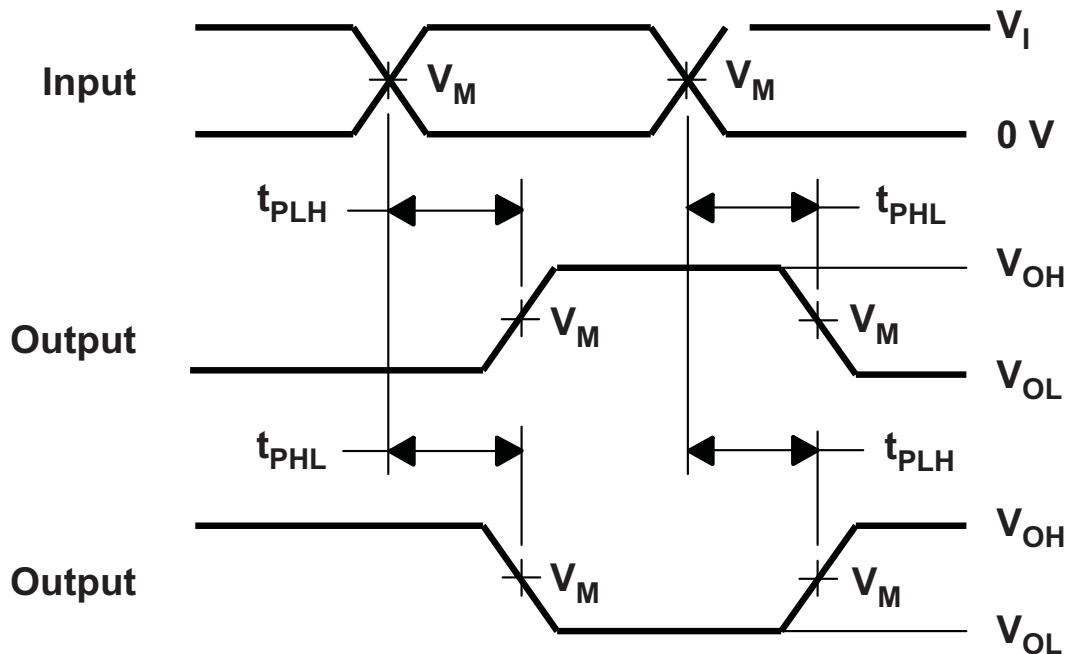
PARAMETER MEASUREMENT INFORMATION

Propagation Delays

From Output Under Test



	$V_{CC} = 3.3\text{ V}$ $\pm 0.3\text{ V}$
C_L V_M V_I	15 pF $V_{CC}/2$ V_{CC}



VOLTAGE WAVEFORMS PROPAGATION DELAY TIMES INVERTING AND NON INVERTING OUTPUTS

- C_L includes probe and jig capacitance.
- Waveform 1 is for an output with internal conditions such that the output is low, except when disabled by the output control. Waveform 2 is for an output with internal conditions such that the output is high, except when disabled by the output control.
- All input pulses are supplied by generators having the following characteristics: $PRR \leq 10\text{ MHz}$, $Z_O = 50\ \Omega$, for propagation delays $t_r/t_f = 3\text{ ns}$, for setup and hold times and pulse width $t_r/t_f = 1.2\text{ ns}$.
- The outputs are measured on at a time, with on transition per measurement.
- t_{PLH} and t_{PHL} are the same a t_{pd} .
- All parameters and waveforms are no applicable to all devices.

PACKAGING INFORMATION

Orderable part number	Status (1)	Material type (2)	Package Pins	Package qty Carrier	RoHS (3)	Lead finish/ Ball material (4)	MSL rating/ Peak reflow (5)	Op temp (°C)	Part marking (6)
CDC1104RVKR	Active	Production	WQFN (RVK) 12	3000 LARGE T&R	Yes	NIPDAU	Level-2-260C-1 YEAR	-40 to 85	ZTH
CDC1104RVKR.B	Active	Production	WQFN (RVK) 12	3000 LARGE T&R	Yes	NIPDAU	Level-2-260C-1 YEAR	-40 to 85	ZTH

⁽¹⁾ **Status:** For more details on status, see our [product life cycle](#).

⁽²⁾ **Material type:** When designated, preproduction parts are prototypes/experimental devices, and are not yet approved or released for full production. Testing and final process, including without limitation quality assurance, reliability performance testing, and/or process qualification, may not yet be complete, and this item is subject to further changes or possible discontinuation. If available for ordering, purchases will be subject to an additional waiver at checkout, and are intended for early internal evaluation purposes only. These items are sold without warranties of any kind.

⁽³⁾ **RoHS values:** Yes, No, RoHS Exempt. See the [TI RoHS Statement](#) for additional information and value definition.

⁽⁴⁾ **Lead finish/Ball material:** Parts may have multiple material finish options. Finish options are separated by a vertical ruled line. Lead finish/Ball material values may wrap to two lines if the finish value exceeds the maximum column width.

⁽⁵⁾ **MSL rating/Peak reflow:** The moisture sensitivity level ratings and peak solder (reflow) temperatures. In the event that a part has multiple moisture sensitivity ratings, only the lowest level per JEDEC standards is shown. Refer to the shipping label for the actual reflow temperature that will be used to mount the part to the printed circuit board.

⁽⁶⁾ **Part marking:** There may be an additional marking, which relates to the logo, the lot trace code information, or the environmental category of the part.

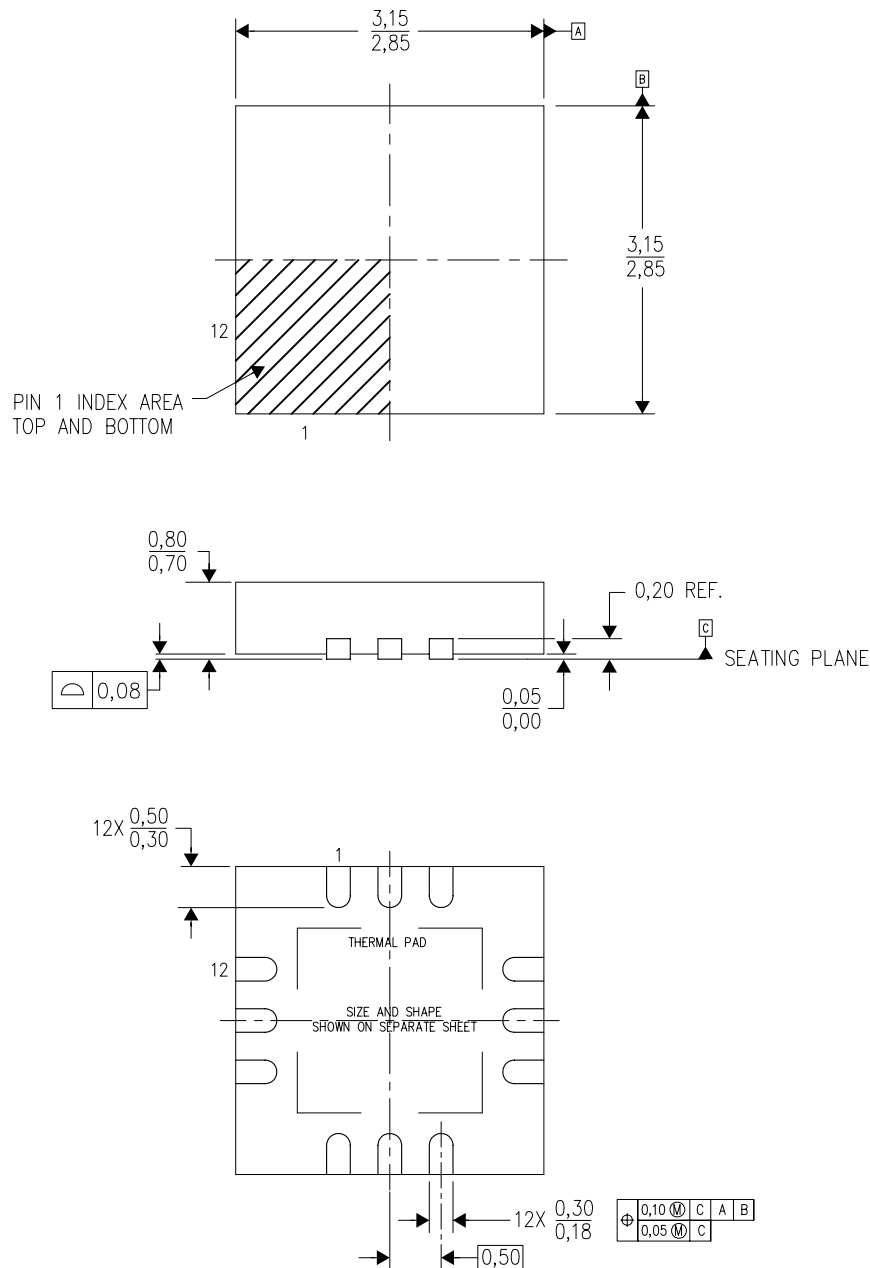
Multiple part markings will be inside parentheses. Only one part marking contained in parentheses and separated by a "~" will appear on a part. If a line is indented then it is a continuation of the previous line and the two combined represent the entire part marking for that device.

Important Information and Disclaimer:The information provided on this page represents TI's knowledge and belief as of the date that it is provided. TI bases its knowledge and belief on information provided by third parties, and makes no representation or warranty as to the accuracy of such information. Efforts are underway to better integrate information from third parties. TI has taken and continues to take reasonable steps to provide representative and accurate information but may not have conducted destructive testing or chemical analysis on incoming materials and chemicals. TI and TI suppliers consider certain information to be proprietary, and thus CAS numbers and other limited information may not be available for release.

In no event shall TI's liability arising out of such information exceed the total purchase price of the TI part(s) at issue in this document sold by TI to Customer on an annual basis.

RVK (S-PWQFN-N12)

PLASTIC QUAD FLATPACK NO-LEAD



4211889/B 10/11

- NOTES:
- All linear dimensions are in millimeters. Dimensioning and tolerancing per ASME Y14.5M-1994.
 - This drawing is subject to change without notice.
 - Quad Flatpack, No-leads (QFN) package configuration.
 - The package thermal pad must be soldered to the board for thermal and mechanical performance.
 - See the additional figure in the Product Data Sheet for details regarding the exposed thermal pad features and dimensions.
 - Falls within JEDEC MO-220.

RVK (S-PWQFN-N12)

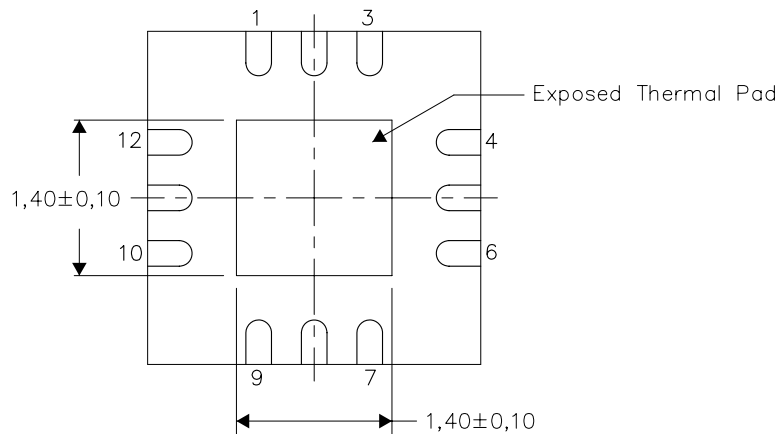
PLASTIC QUAD FLATPACK NO-LEAD

THERMAL INFORMATION

This package incorporates an exposed thermal pad that is designed to be attached directly to an external heatsink. The thermal pad must be soldered directly to the printed circuit board (PCB). After soldering, the PCB can be used as a heatsink. In addition, through the use of thermal vias, the thermal pad can be attached directly to the appropriate copper plane shown in the electrical schematic for the device, or alternatively, can be attached to a special heatsink structure designed into the PCB. This design optimizes the heat transfer from the integrated circuit (IC).

For information on the Quad Flatpack No-Lead (QFN) package and its advantages, refer to Application Report, QFN/SON PCB Attachment, Texas Instruments Literature No. SLUA271. This document is available at www.ti.com.

The exposed thermal pad dimensions for this package are shown in the following illustration.



Bottom View

Exposed Thermal Pad Dimensions

4211891/A 06/11

NOTE: All linear dimensions are in millimeters

重要通知和免责声明

TI“按原样”提供技术和可靠性数据（包括数据表）、设计资源（包括参考设计）、应用或其他设计建议、网络工具、安全信息和其他资源，不保证没有瑕疵且不做任何明示或暗示的担保，包括但不限于对适销性、与某特定用途的适用性或不侵犯任何第三方知识产权的暗示担保。

这些资源可供使用 TI 产品进行设计的熟练开发人员使用。您将自行承担以下全部责任：(1) 针对您的应用选择合适的 TI 产品，(2) 设计、验证并测试您的应用，(3) 确保您的应用满足相应标准以及任何其他安全、安保法规或其他要求。

这些资源如有变更，恕不另行通知。TI 授权您仅可将这些资源用于研发本资源所述的 TI 产品的相关应用。严禁以其他方式对这些资源进行复制或展示。您无权使用任何其他 TI 知识产权或任何第三方知识产权。对于因您对这些资源的使用而对 TI 及其代表造成的任何索赔、损害、成本、损失和债务，您将全额赔偿，TI 对此概不负责。

TI 提供的产品受 [TI 销售条款](#)、[TI 通用质量指南](#) 或 [ti.com](#) 上其他适用条款或 TI 产品随附的其他适用条款的约束。TI 提供这些资源并不会扩展或以其他方式更改 TI 针对 TI 产品发布的适用的担保或担保免责声明。除非德州仪器 (TI) 明确将某产品指定为定制产品或客户特定产品，否则其产品均为按确定价格收入目录的标准通用器件。

TI 反对并拒绝您可能提出的任何其他或不同的条款。

版权所有 © 2025，德州仪器 (TI) 公司

最后更新日期：2025 年 10 月