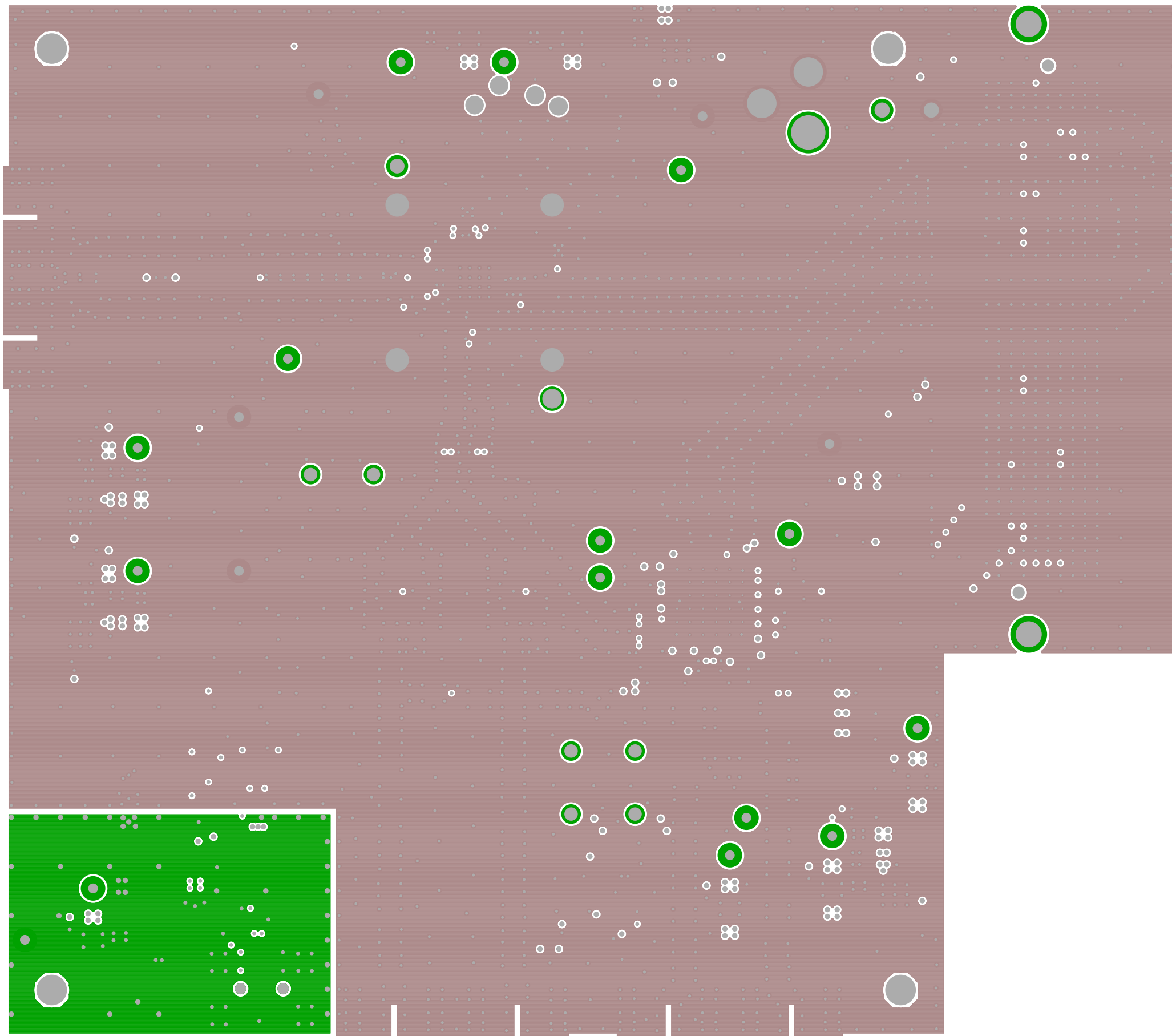
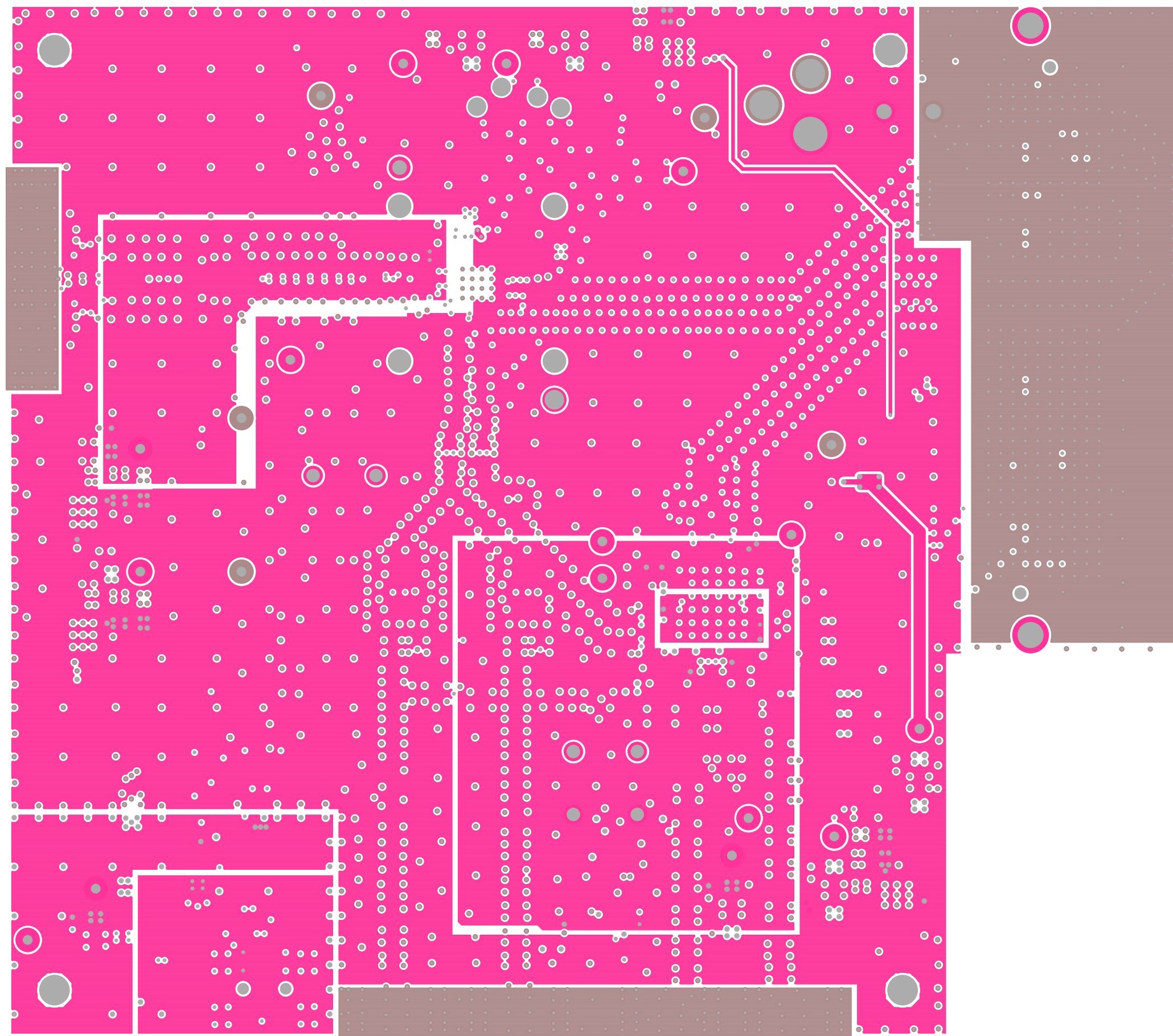


ADC14X250 EVM REV A
TOP SIDE - LAYER 1

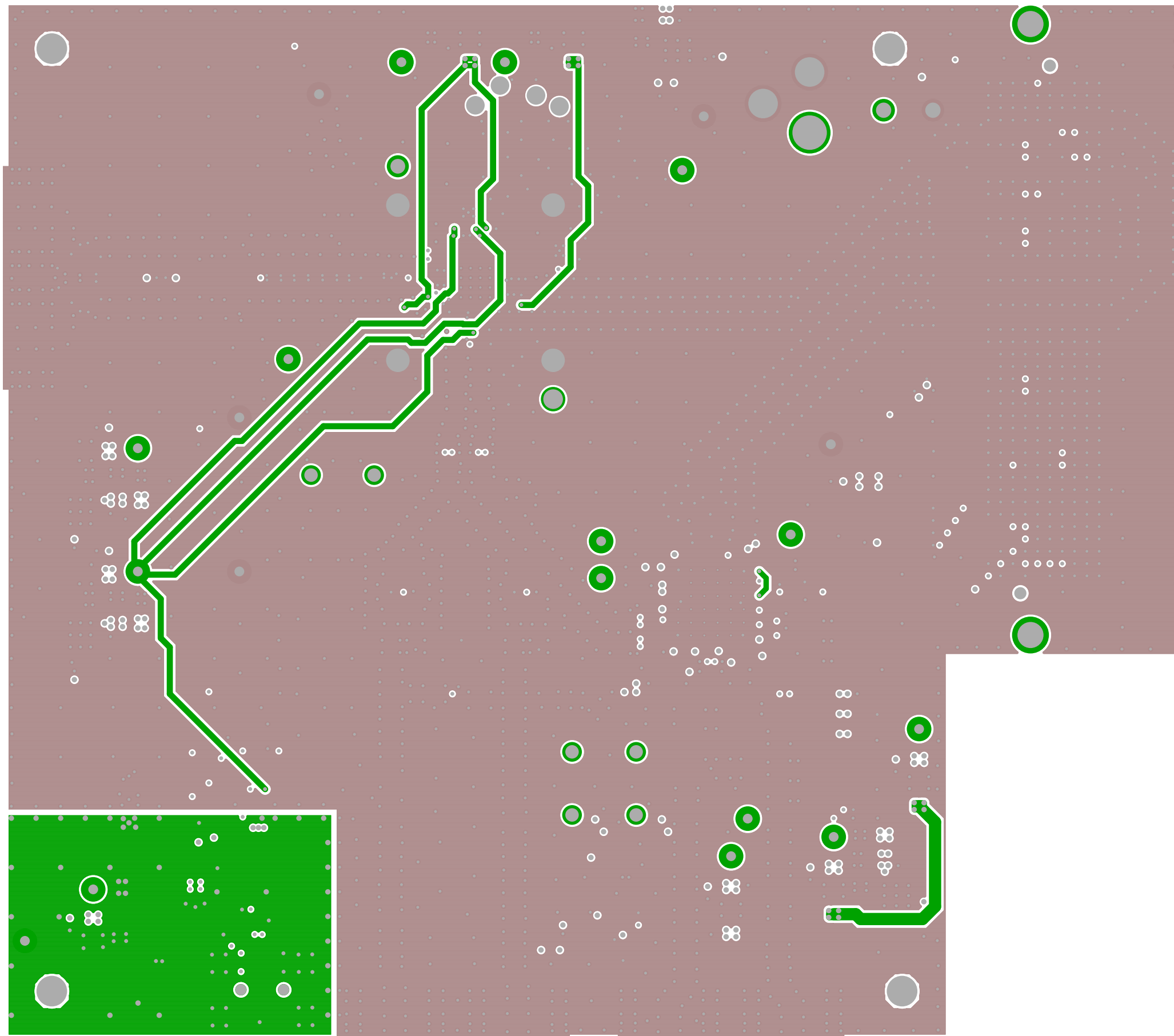


ADC14X250 EVM REV A

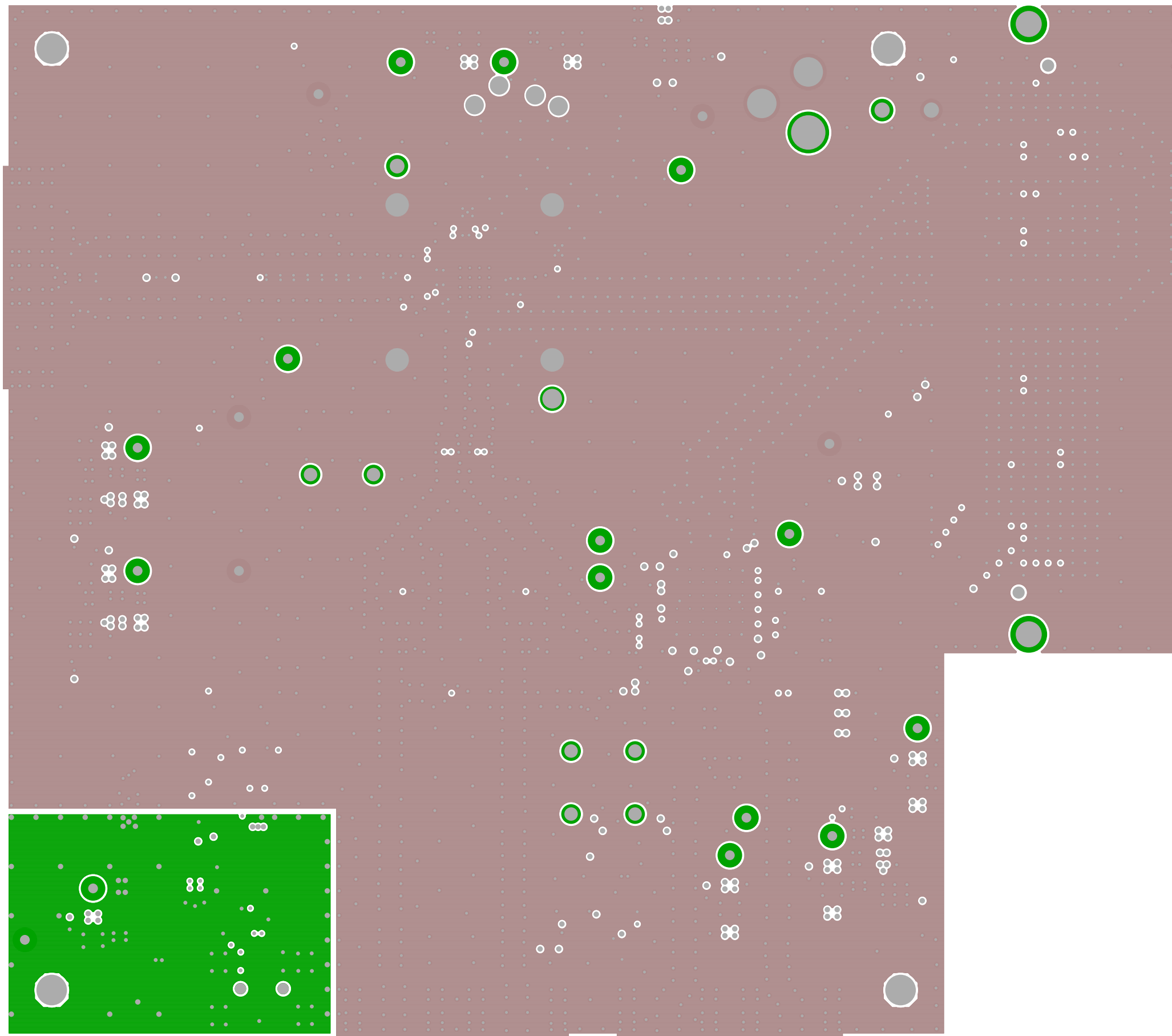
GND 1 - LAYER 2



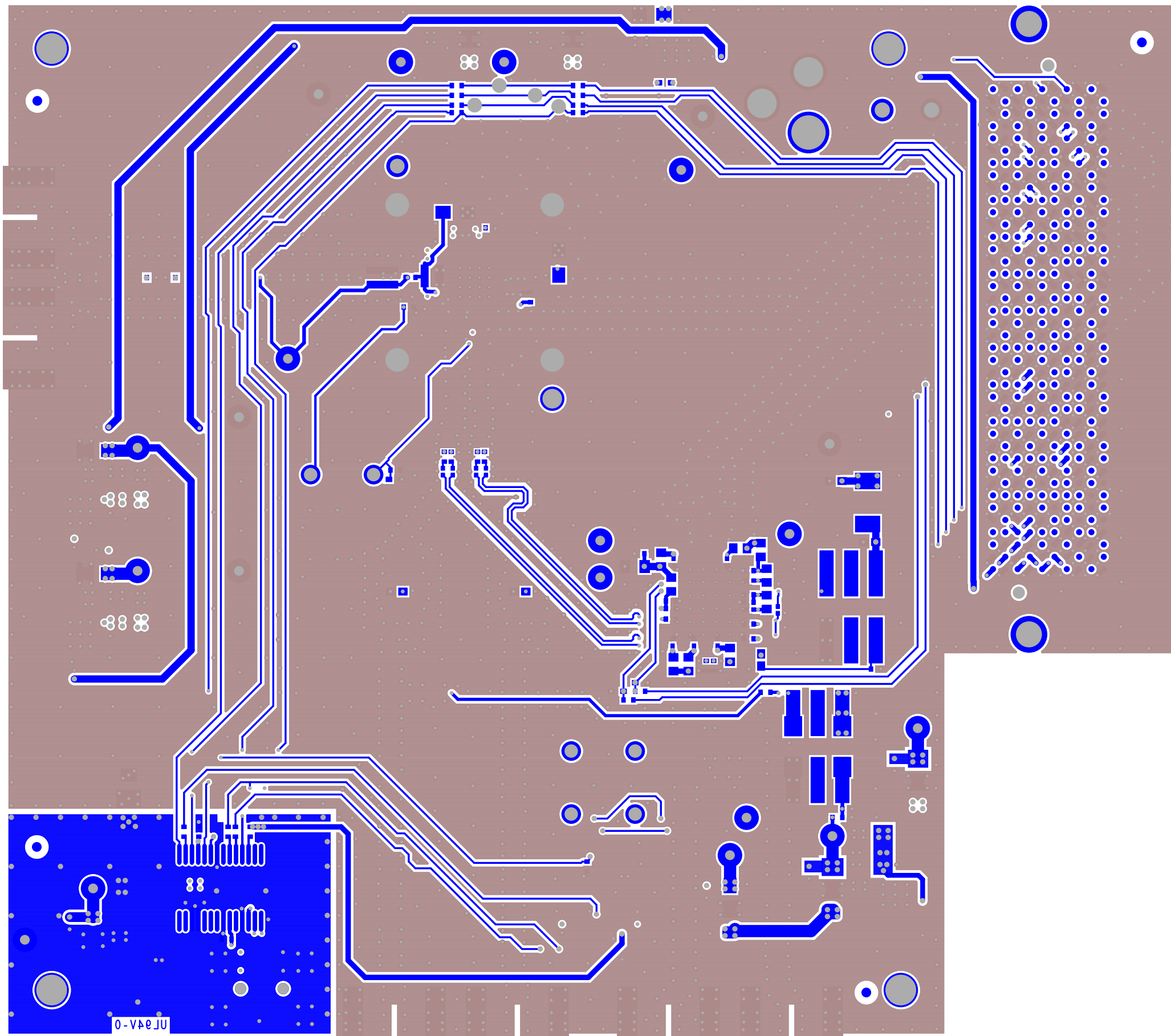
ADC14X250 EVM REV A
PWR PLANE - LAYER 3



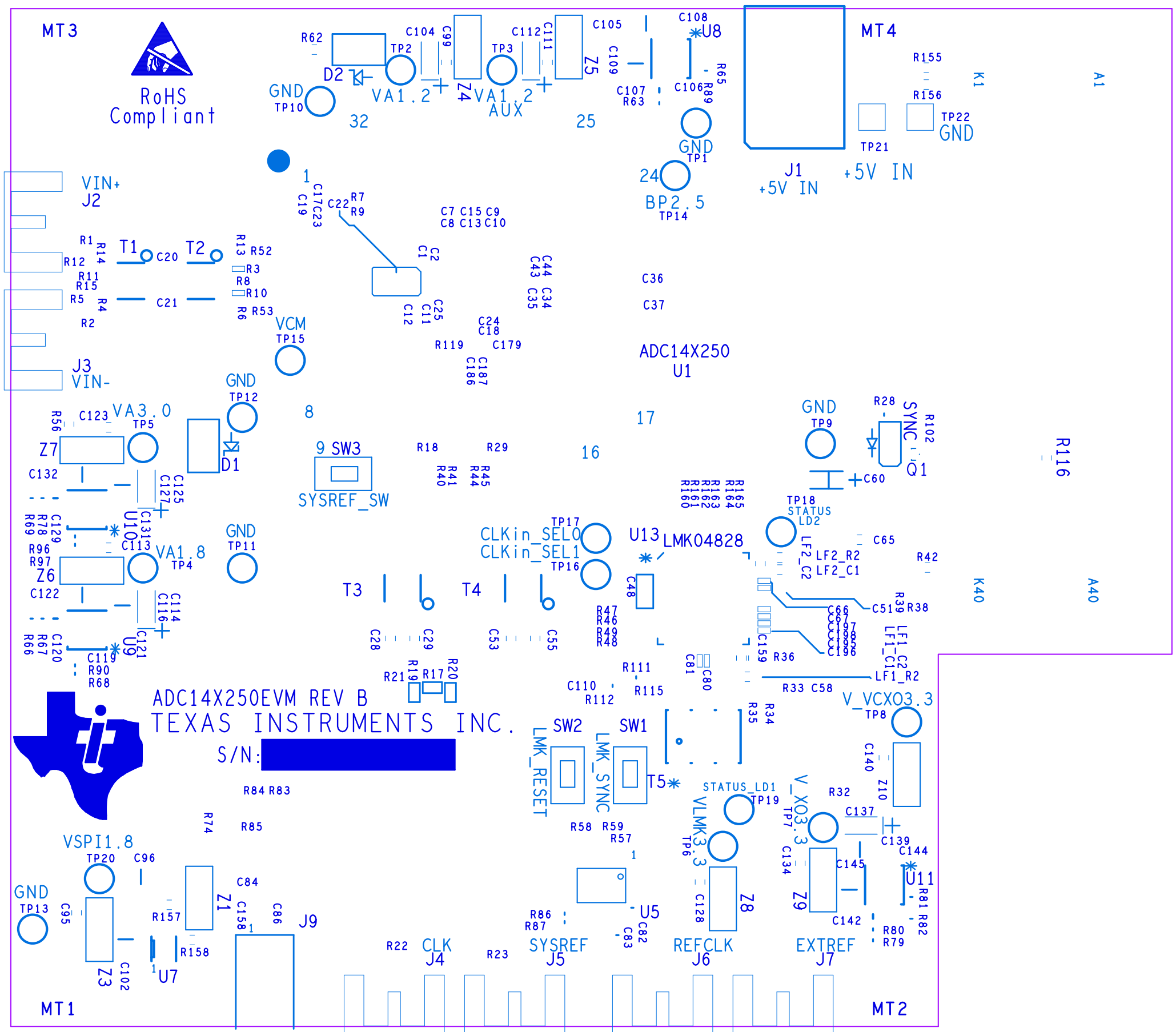
ADC14X250 EVM REV A
GND 2 - LAYER 4



ADC14X250 EVM REV A
GND 3 - LAYER 5

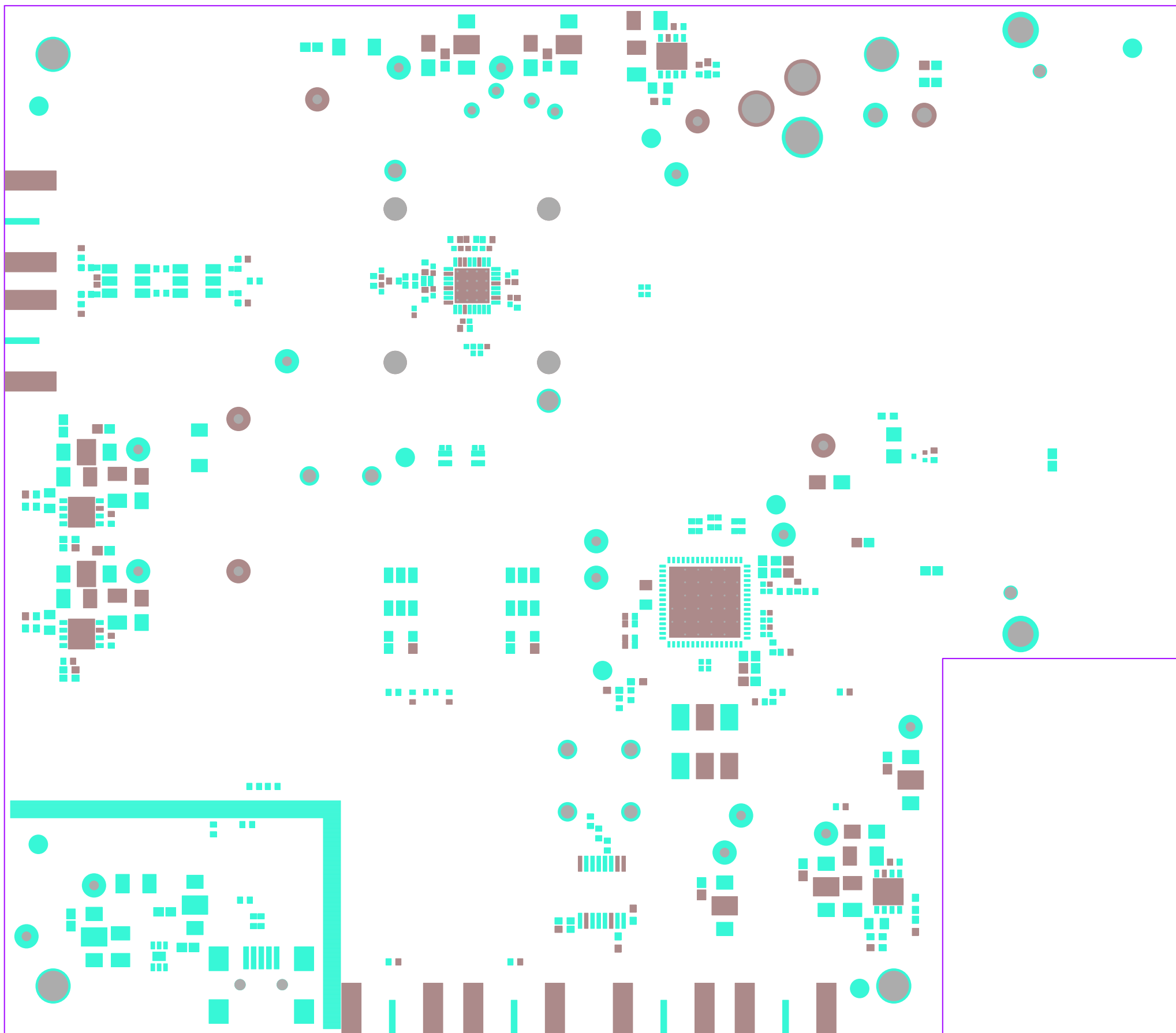


ADC14X250 EVM REV A
BOTTOM SIDE - LAYER 6



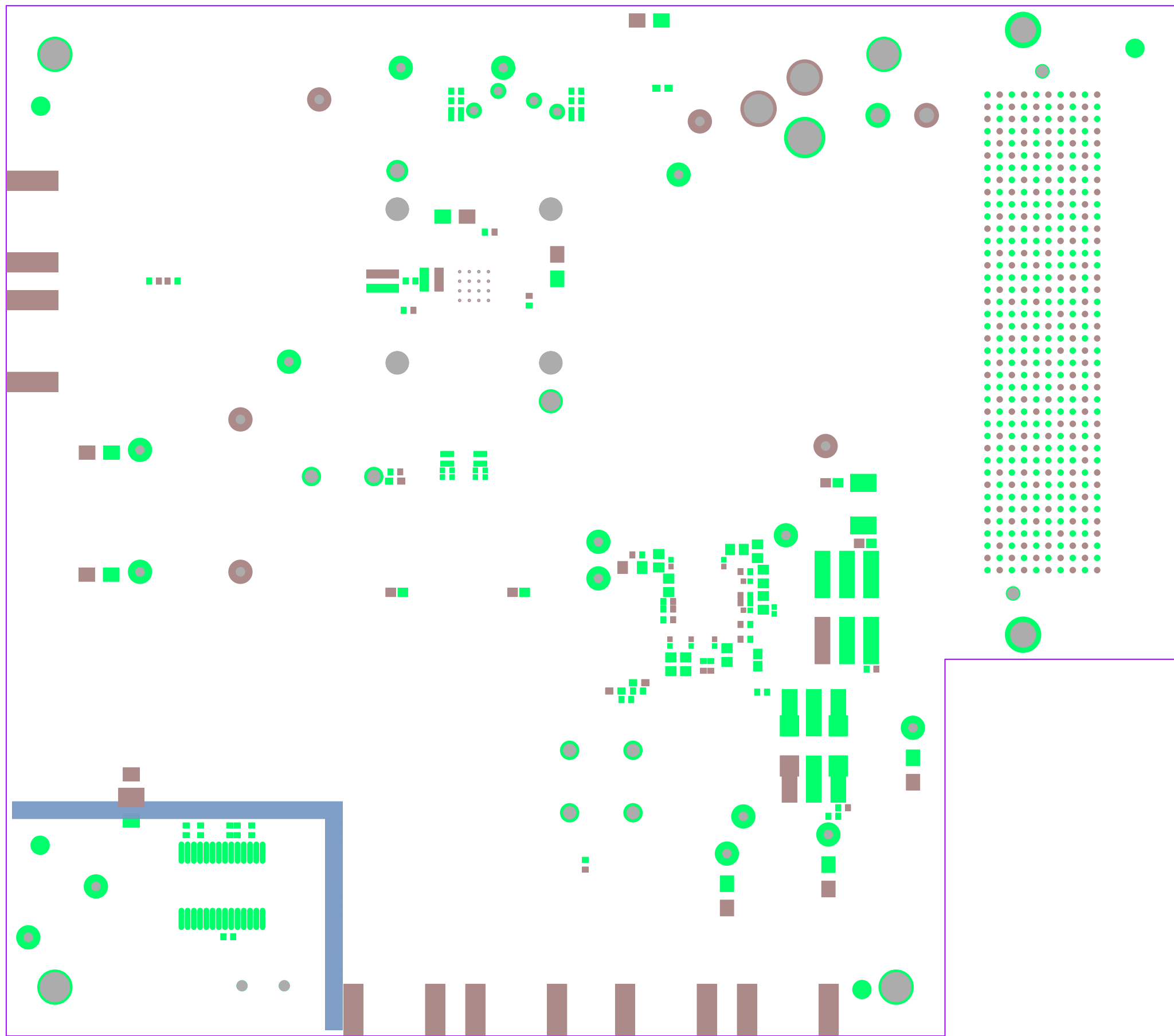
ADC14X250 EVM REV A

SILKSCREEN TOP



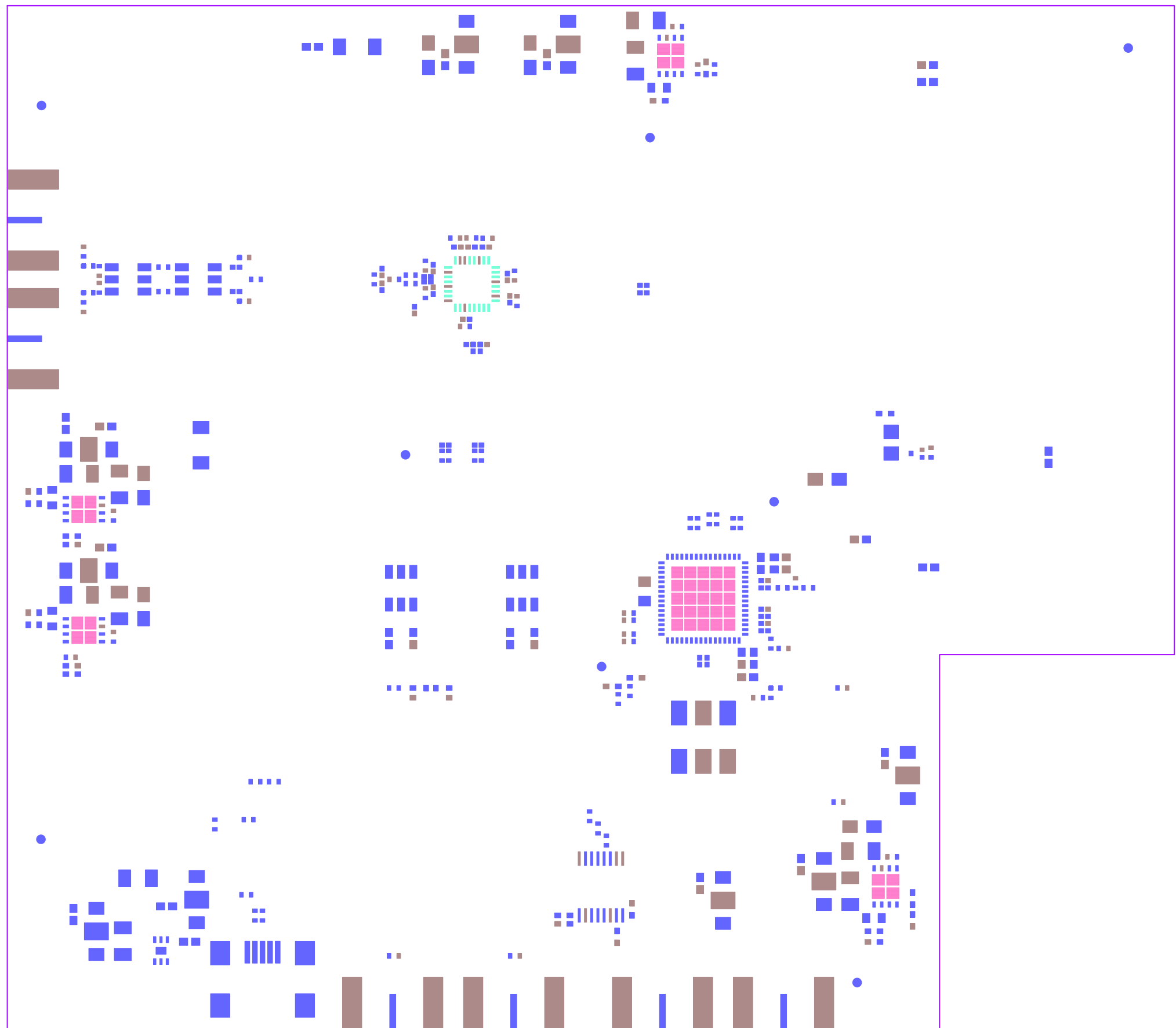
ADC14X250 EVM REV A

SOLDERMASK TOP



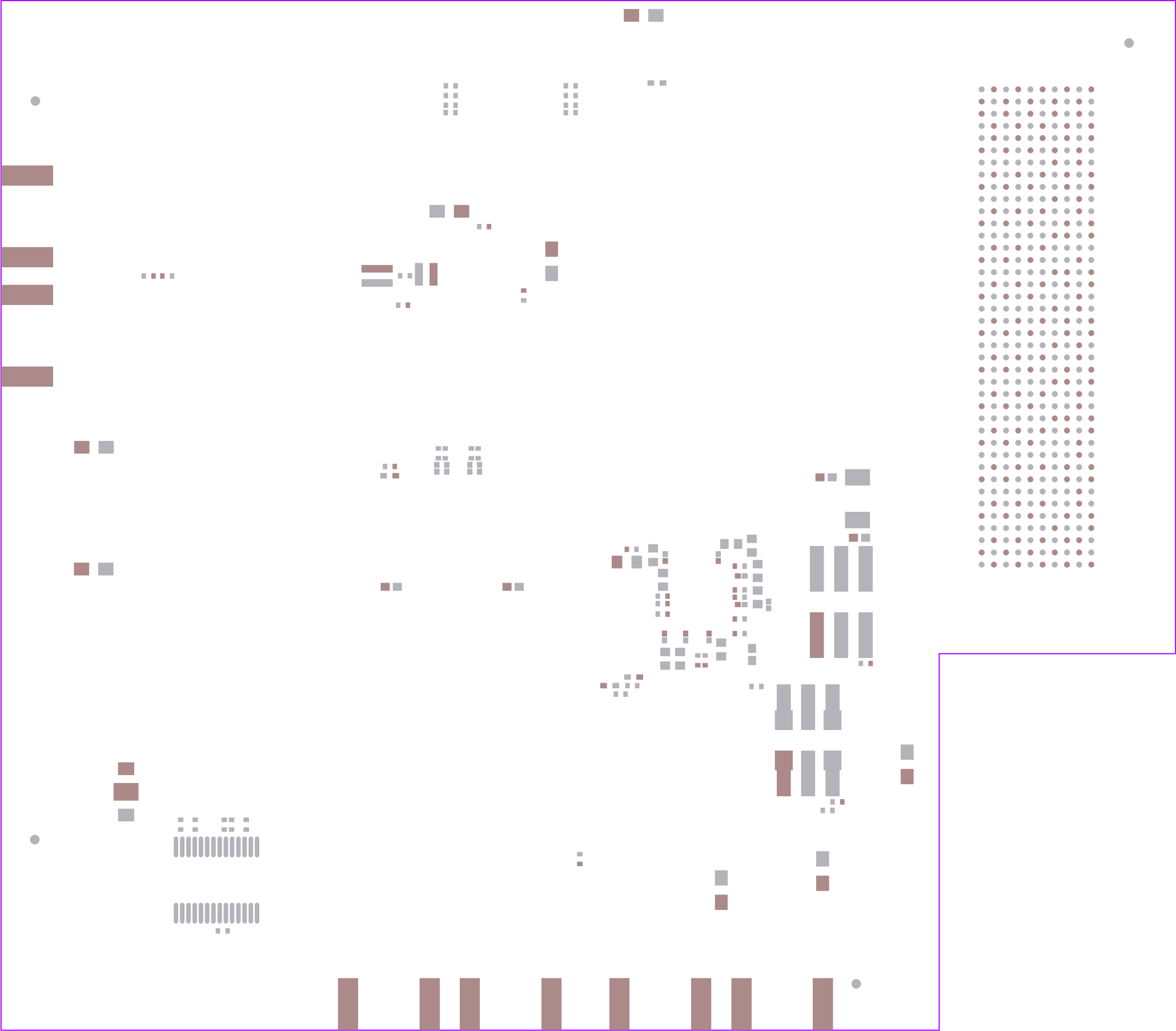
ADC14X250 EVM REV A

SOLDERMASK BOTTOM



ADC14X250 EVM REV A

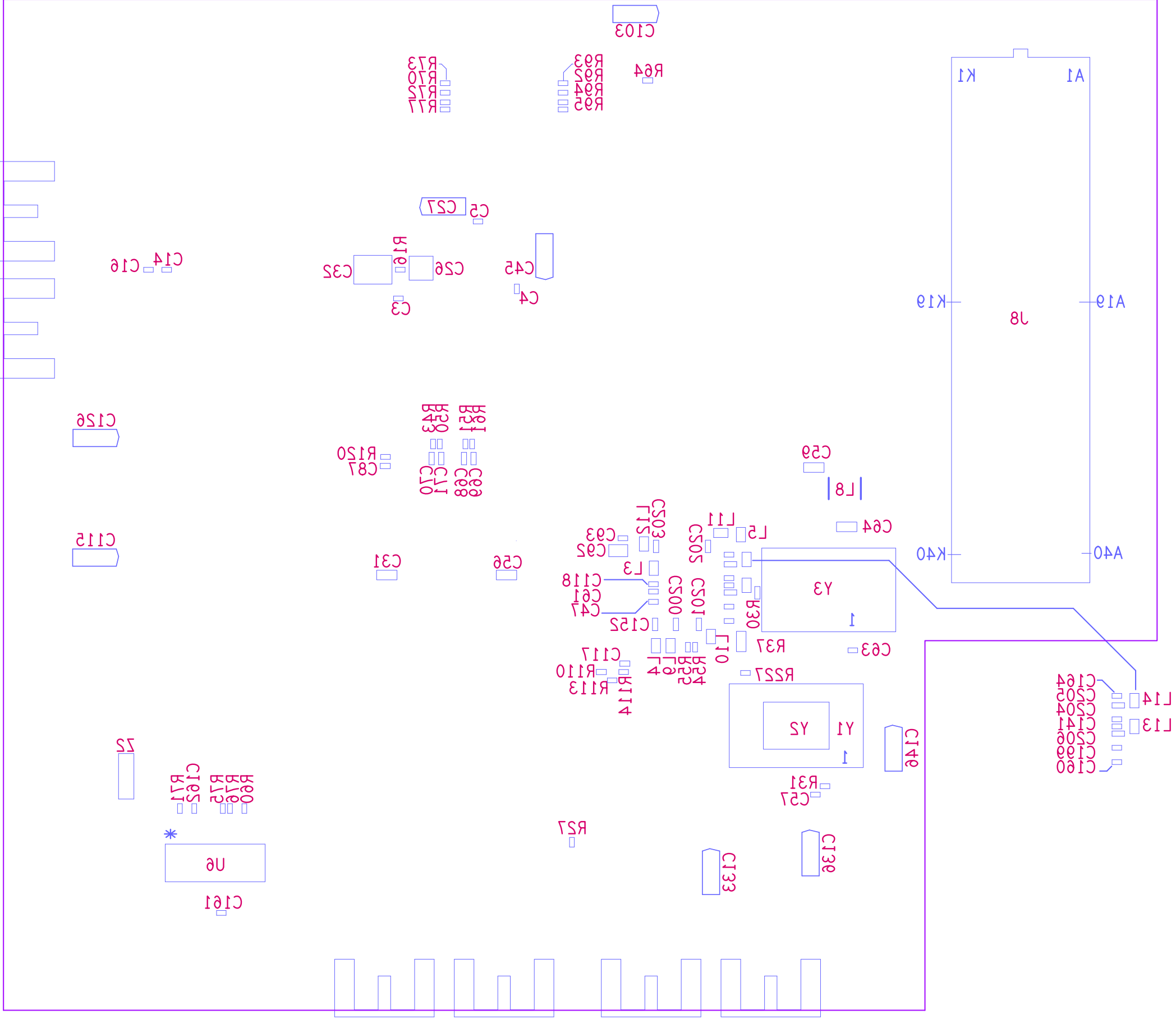
PASTEMASK TOP

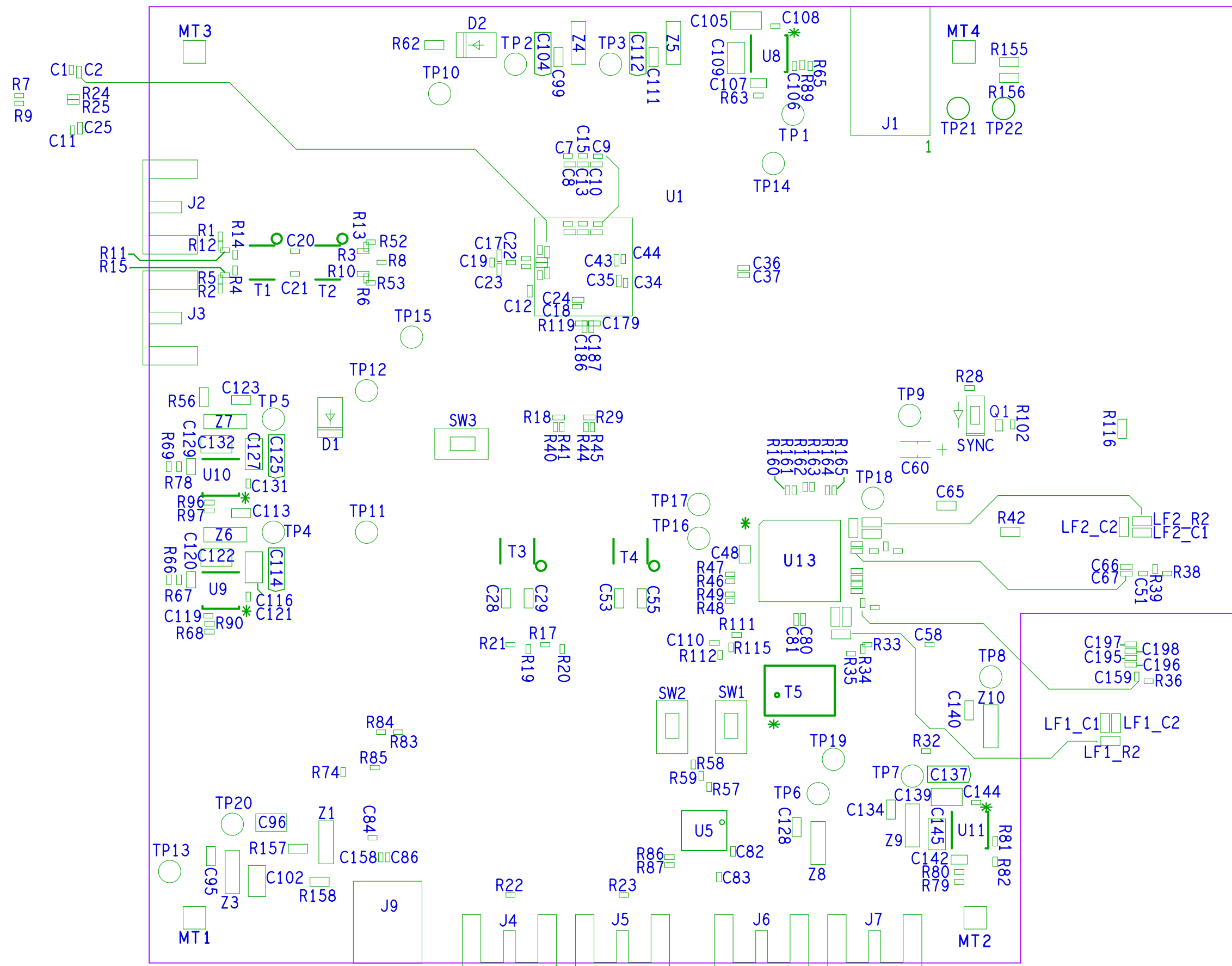


ADC14X250 EVM REV A

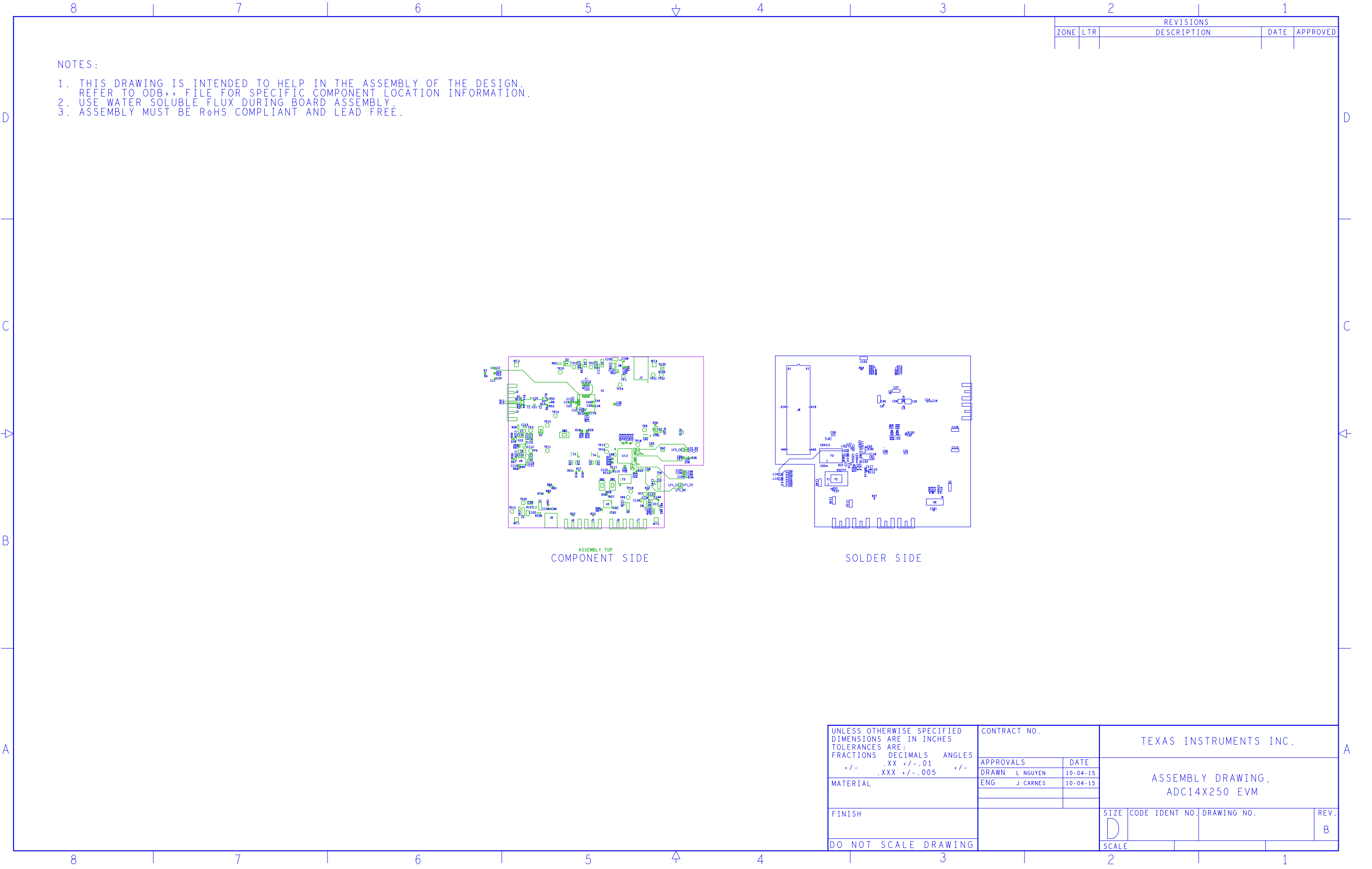
PASTEMASK BOTTOM

ASSEMBLY BOTTOM





ASSEMBLY TOP



- NOTES:
- 1. THIS DRAWING IS INTENDED TO HELP IN THE ASSEMBLY OF THE DESIGN. REFER TO ODB++ FILE FOR SPECIFIC COMPONENT LOCATION INFORMATION.
 - 2. USE WATER SOLUBLE FLUX DURING BOARD ASSEMBLY.
 - 3. ASSEMBLY MUST BE RoHS COMPLIANT AND LEAD FREE.

REVISIONS				
ZONE	LTR	DESCRIPTION		DATE

UNLESS OTHERWISE SPECIFIED DIMENSIONS ARE IN INCHES TOLERANCES ARE: FRACTIONS DECIMALS ANGLES +/- .XX +/- .01 +/- .XXX +/- .005 +/-	CONTRACT NO.		TEXAS INSTRUMENTS INC.					
	APPROVALS		DATE		ASSEMBLY DRAWING, ADC14X250 EVM			
	DRAWN L NGUYEN		10-04-15					
	ENG J CARNES		10-04-15					
MATERIAL								
FINISH					SIZE	CODE IDENT NO.	DRAWING NO.	REV.
					D			B
DO NOT SCALE DRAWING					SCALE			

