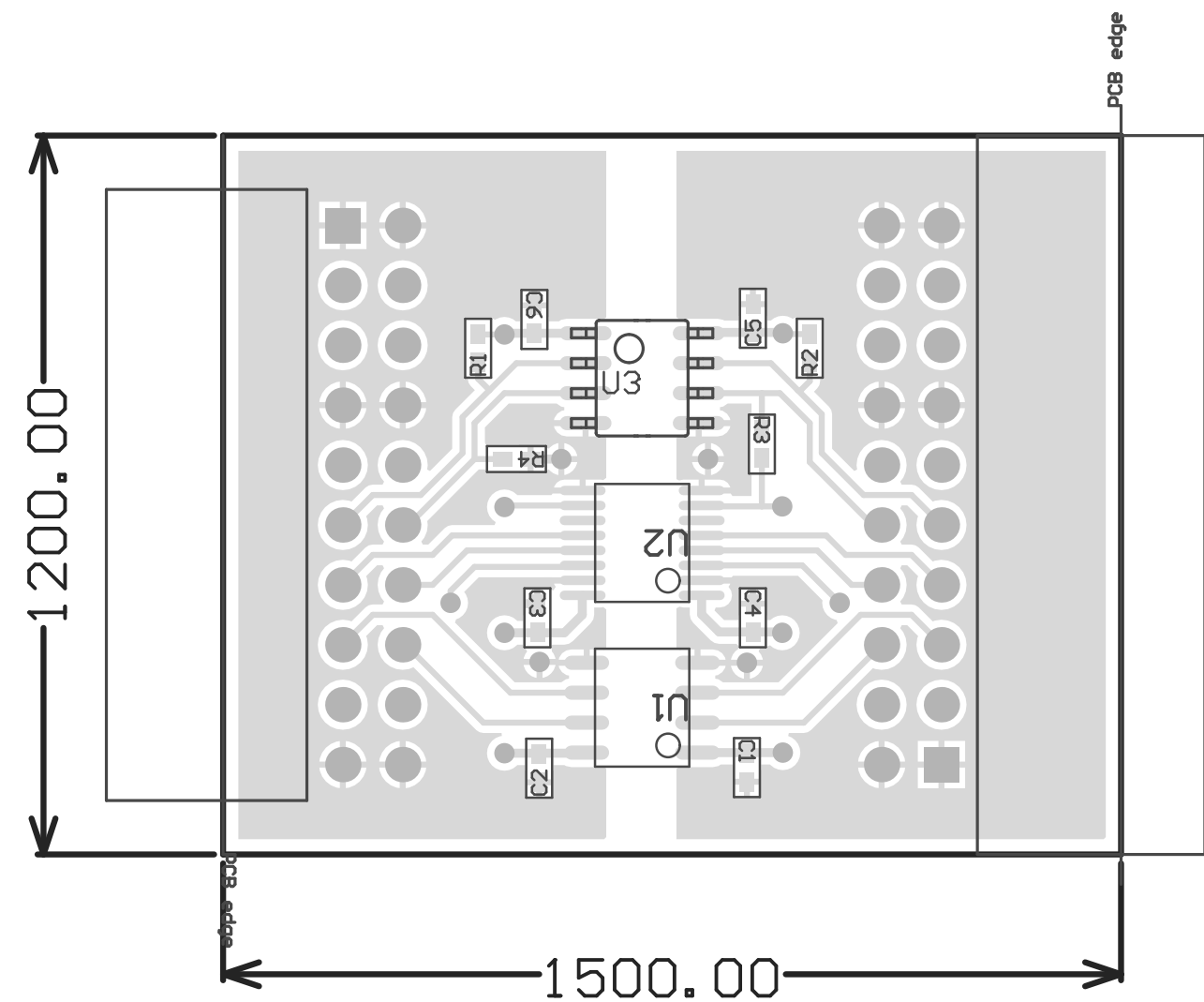


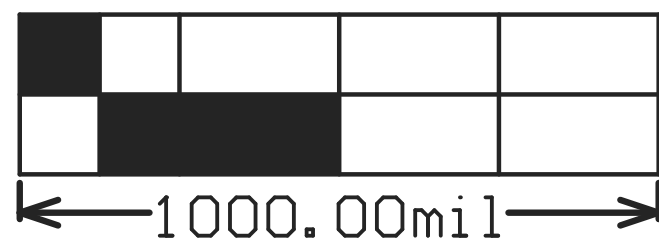
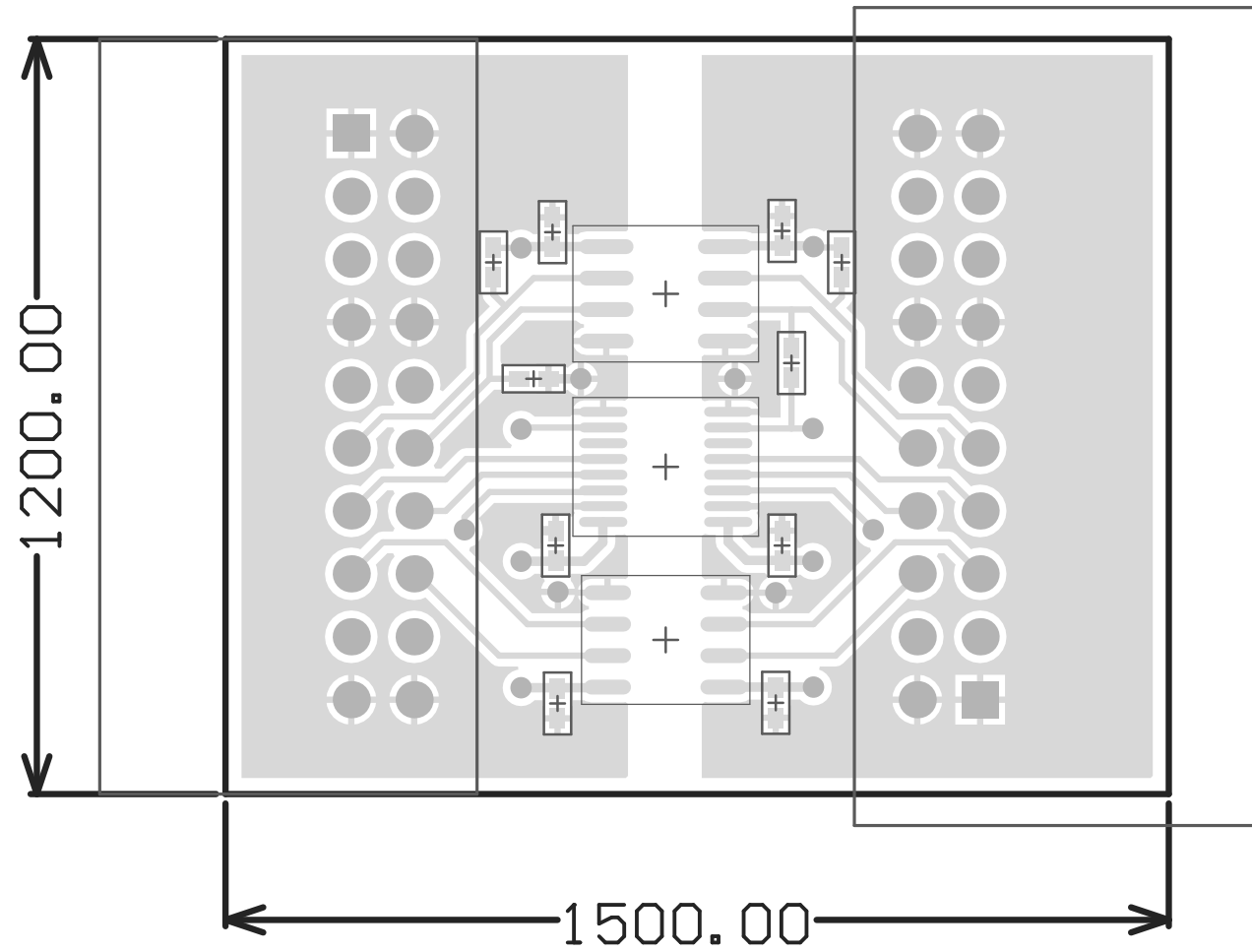
PC Board Dimensions

- ZZ3 ■ These assemblies must comply with workmanship standards IPC-A-610 Class 2, unless otherwise specified.
- ZZ2 ■ These assemblies must be clean and free from flux and all contaminants. Use of no clean flux is not acceptable.
- ZZ1 ■ These assemblies are ESD sensitive, ESD precautions shall be observed.

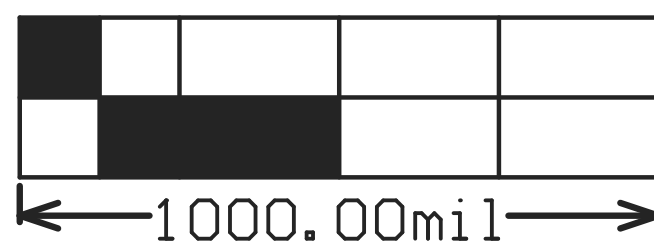
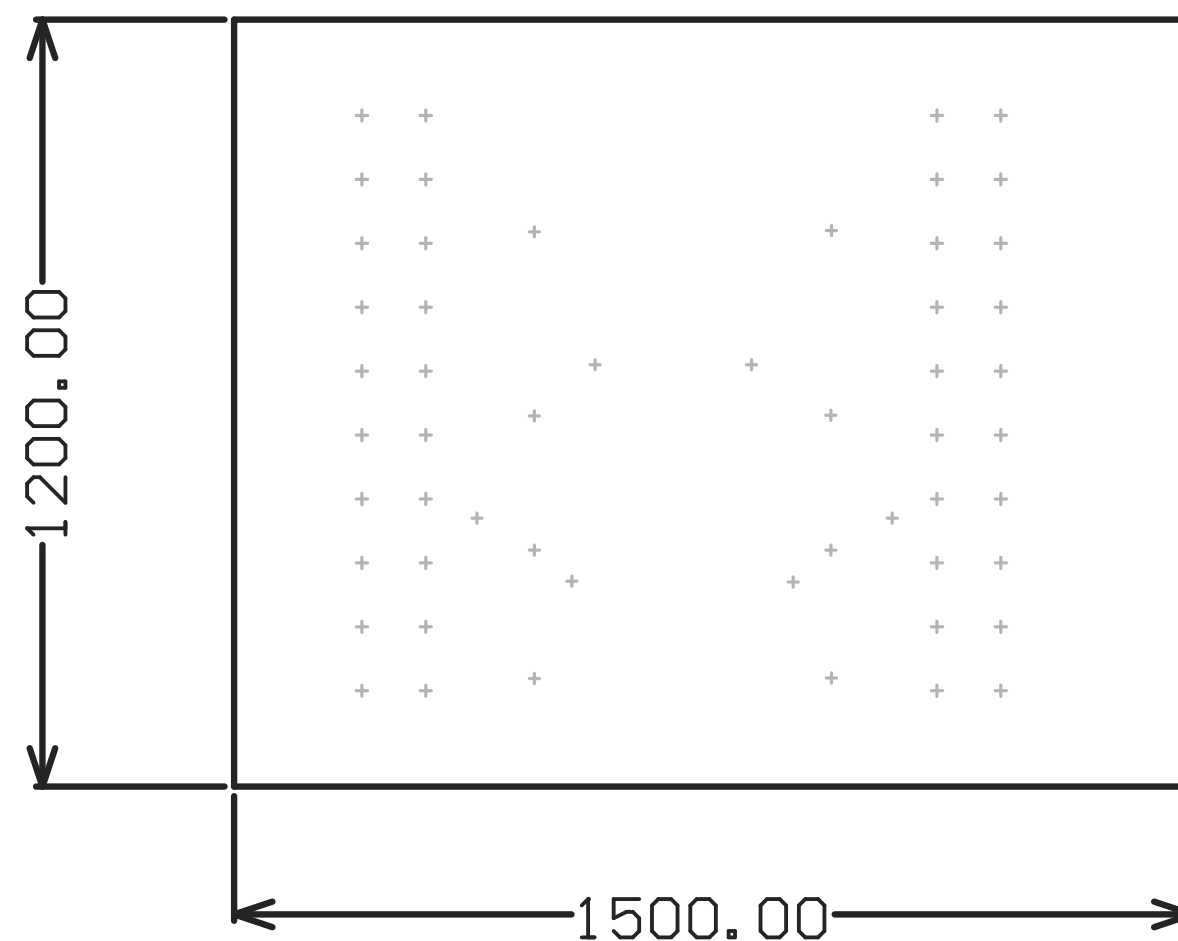


COMPONENTS MARKED 'DNP' SHOULD NOT BE POPULATED.
ASSEMBLY VARIANT: [No Variations]

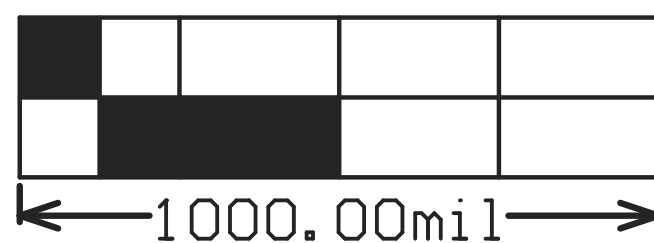
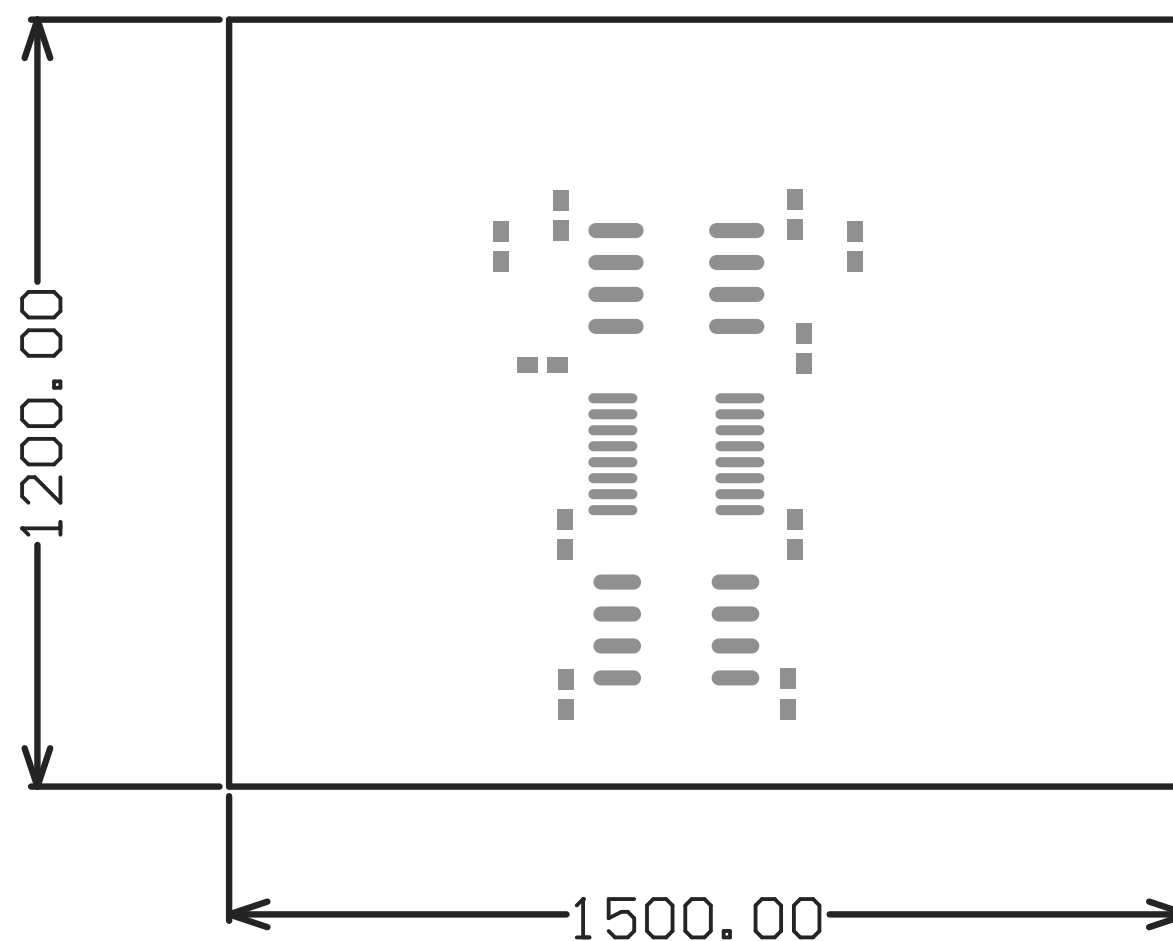
PCB VIEWED FROM TOP SIDE	BOARD #: CAPTIVATE-ISO	REV: C	SVN REV: Not In VersionControl
M2 Board Dimensions			
PLOT NAME = TIDM-1CHP-DTECT-CO-Mechanical	GENERATED : 8/3/2016	8:20:34 AM	TEXAS INSTRUMENTS



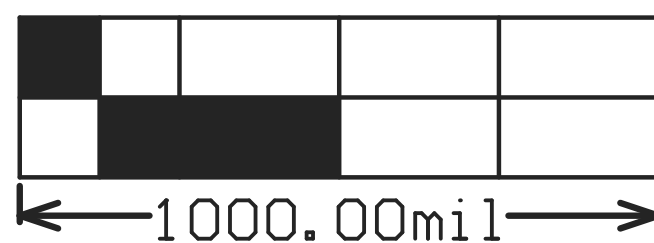
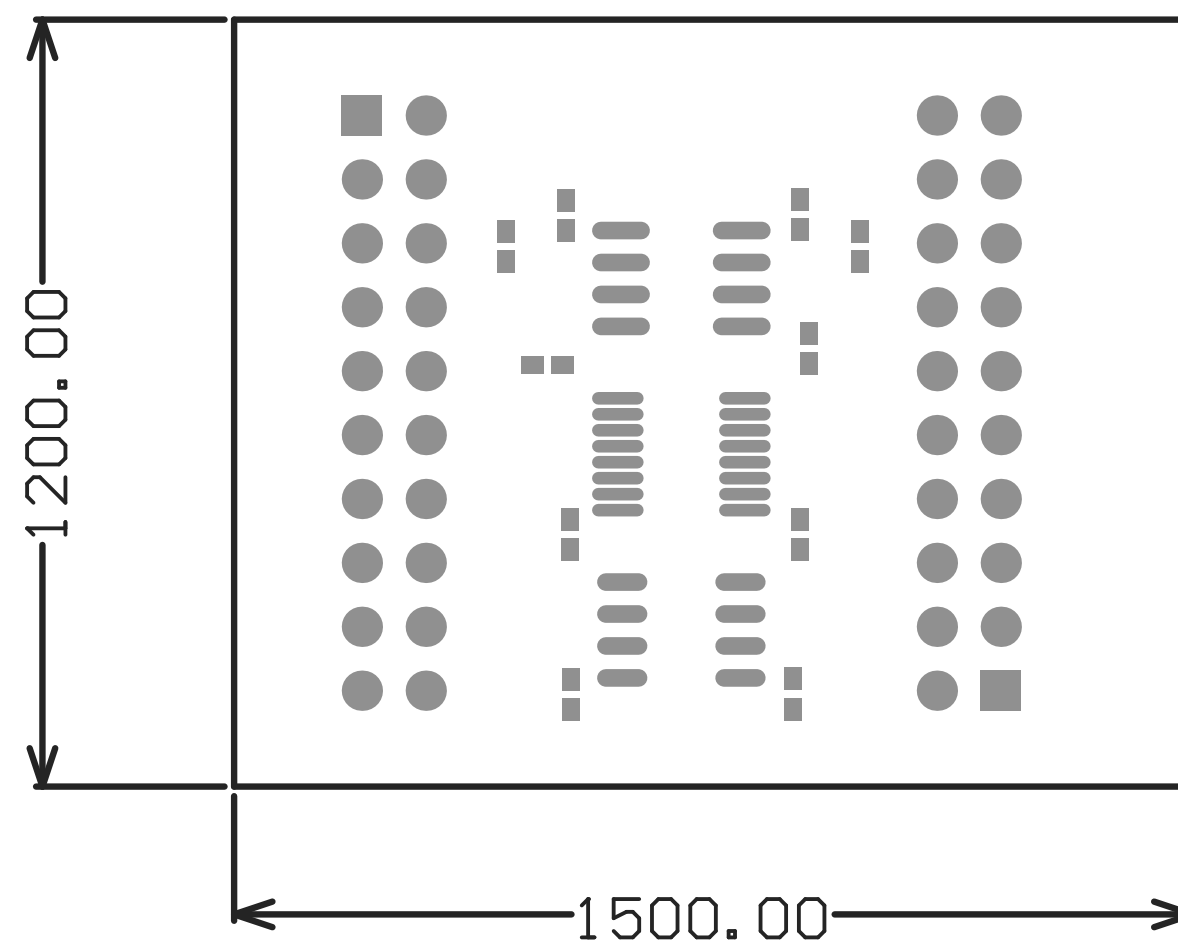
M25 Board Dimensions



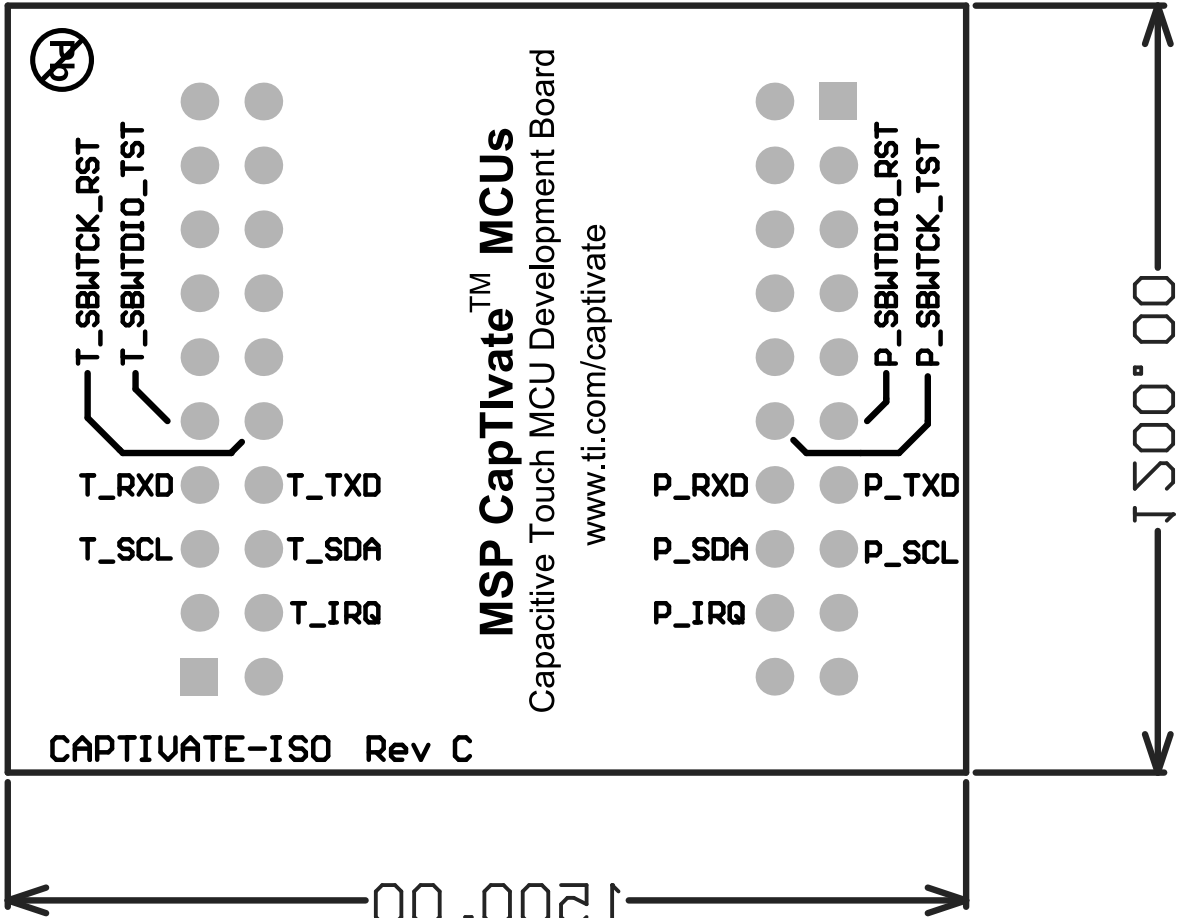
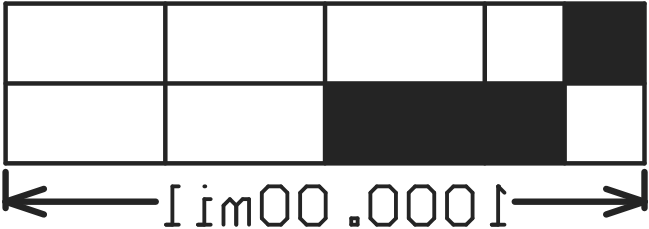
M2 Board Dimensions



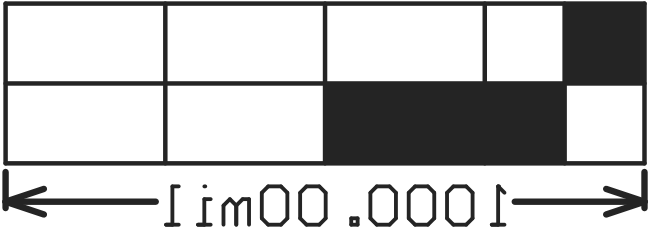
12 Board Dimensions



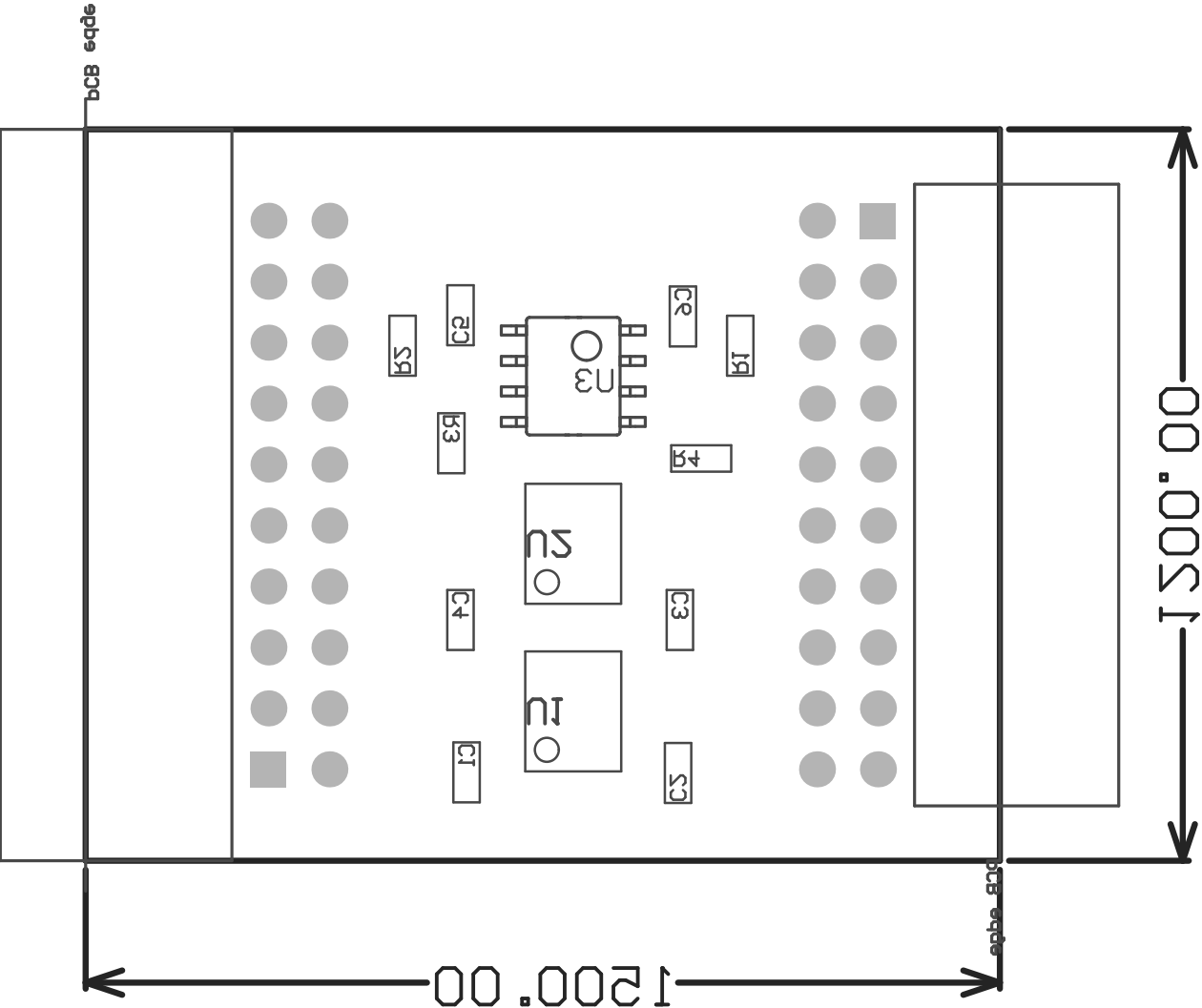
12 Board Dimensions



PLOT NAME = TIDM-1CHP-DTECT-CO-Mechanical		GENERATED : 8\3\2016 8:20:36 AM	TEXAS INSTRUMENTS
M5 Board Dimensions			
PCB VIEWED FROM TOP SIDE		BOARD #: CAPTIVATE-120 REV: C	2VN REV: Not In VersionControl



ASSEMBLY VARIANT: [no variations]
COMPONENTS MARKED 'DNP' SHOULD NOT BE POPULATED.



221 ■ These assemblies are ESD sensitive, ESD precautions shall be observed.

222 ■ These assemblies must be clean and free from flux and all contaminants. Use of no clean flux is not acceptable.

223 ■ These assemblies must comply with workmanship standards IPC-A-610 Class 2, unless otherwise specified.

12.500 mm x 12.500 mm

