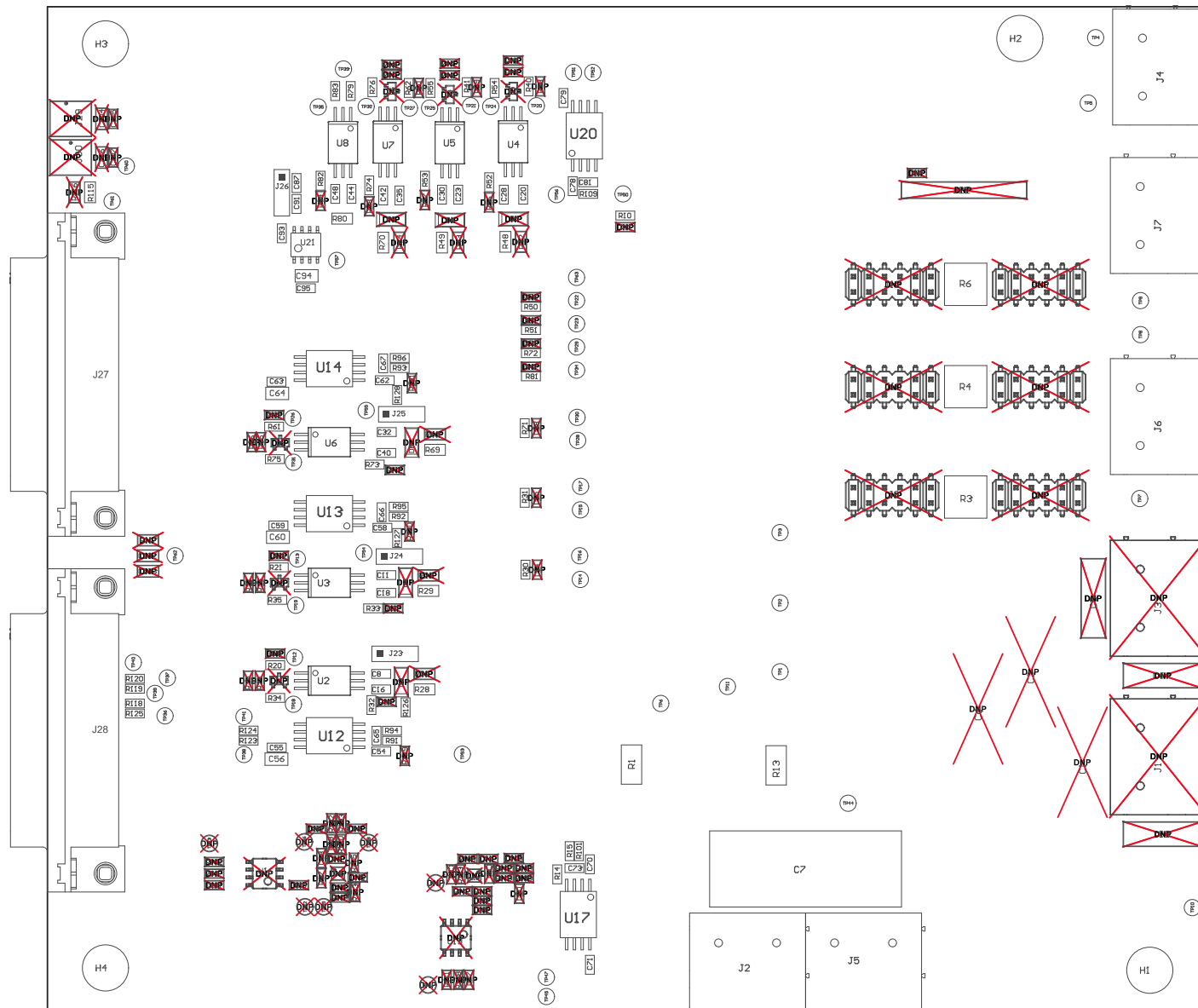


Z22 ■ These assemblies are ESD sensitive, ESD precautions shall be observed.  
 Z23 ■ These assemblies must be clean and free from flux and all contaminants. Use of no clean flux is not acceptable.  
 Z24 ■ These assemblies must comply with workmanship standards IPC-A-610 Class 2, unless otherwise specified.



COMPONENTS MARKED 'DNP' SHOULD NOT BE POPULATED.  
 ASSEMBLY VARIANT: AMC1300-G1

PCB VIEWED FROM TOP SIDE	BOARD #: 010025	REV: E1	SUN REV: Not In VersionControl
M5 Assembly Top	TID #: TIDA-010025		
PLOT NAME =Top Assembly Drawing	GENERATED : 10/11/2018 10:59:38 AM	TEXAS INSTRUMENTS	

