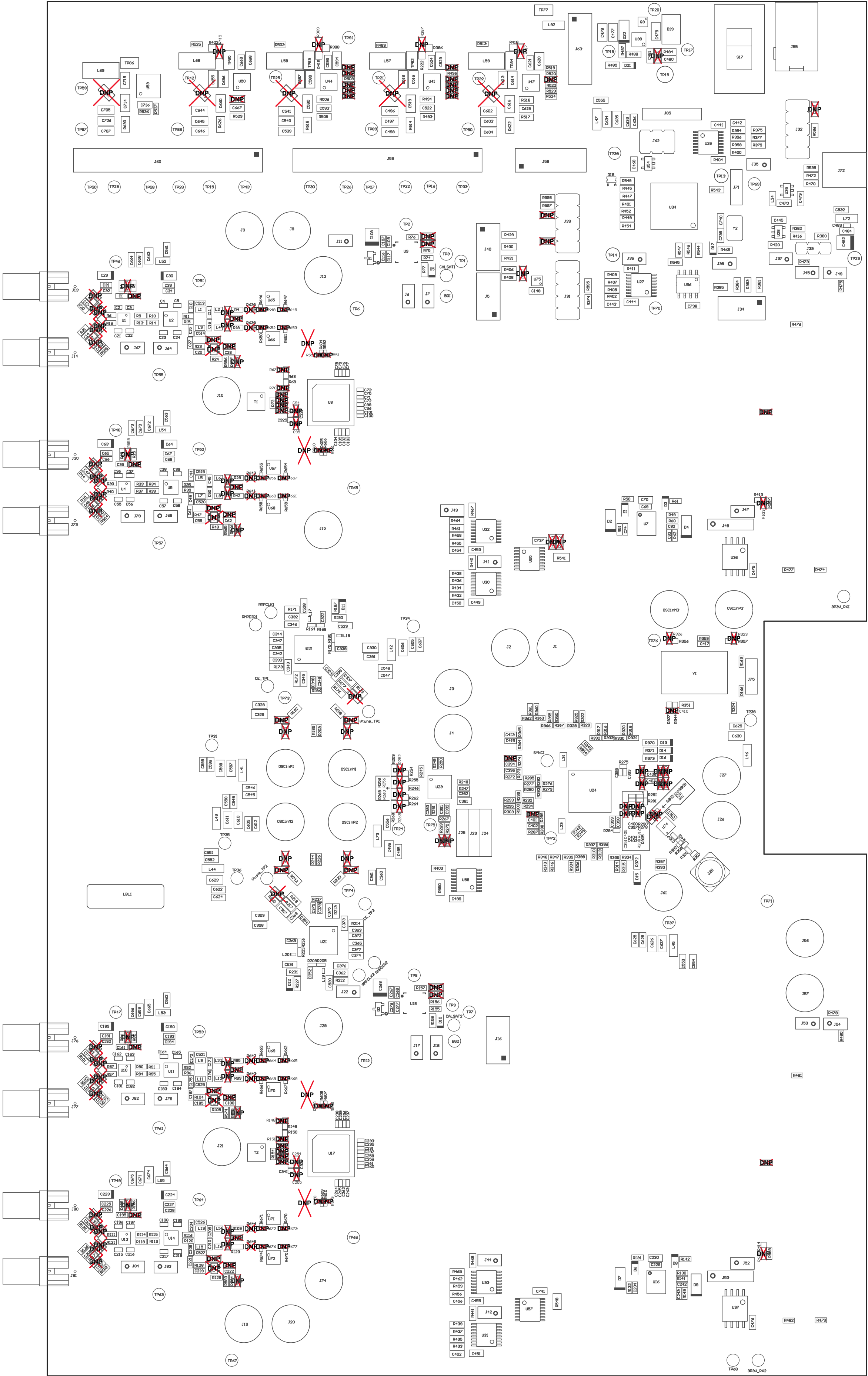


221 ■ Install label in silkscreened box after final wash. Text shall be 8 pt font. Text shall be per the Label Table in the PDF schematic.

222 ■ These assemblies are ESD sensitive, ESD precautions shall be observed.

223 ■ These assemblies must be clean and free from flux and all contaminants. Use of no clean flux is not acceptable.

224 ■ These assemblies must comply with workmanship standards IPC-A-610 Class 2, unless otherwise specified.



COMPONENTS MARKED 'DNP' SHOULD NOT BE POPULATED.

ASSEMBLY VARIANT:

TIDA-01022A\_Onboard\_Power

PCB VIEWED FROM BOTTOM SIDE		BOMBO #:	TID#-01022	REV#	E3	SUN REV#
LAYER NAME =		ASSEMBLY BOTTOM				
TID #:		01022				
PLOT NAME =		Bottom Assembly Drawing				GENERATED: 03/06/2017 12:12:36 PM TEXAS INSTRUMENTS