

TI Designs: TIDM-1003

ブラシレスDCまたは永久磁石同期整流モータ用の低電圧、50AのセンサレスFOCのリファレンス・デザイン



概要

TIDM-1003デザインは、低電圧、大電流、大電力の電動アシスト自転車、パワー・ツール、ファン、ポンプなどのアプリケーションに適した、30~54VのブラシレスDCモータ (BLDC) または永久磁石同期整流モータ (PMSM) 用コントローラです。このTI Designは、テキサス・インスツルメンツ製のUCC27211D MOSFETドライバ、CSD19506KCS 80V NexFET™ パワーMOSFET、InstaSPIN™ テクノロジー採用のTMS320F28027F MCU、TPS54360降圧型コンバータ、LDOを使用します。このデザインは、InstaSPIN-FOC™ テクノロジーによりPMSMまたはBLDCモータのパラメータを識別してチューニングし、外部スロットルによってモータ速度を制御します。全体として、このデザインは大電力、低電圧のBLDCモータまたはPMSMの効率的な制御のデモンストレーションを目的としています。

リソース

TIDM-1003	デザイン・フォルダ
TMS320F28027F	プロダクト・フォルダ
UCC27211	プロダクト・フォルダ
TPS54360	プロダクト・フォルダ
CSD19506KCS	プロダクト・フォルダ
OPA4374	プロダクト・フォルダ
InstaSPIN-FOC	ツール・フォルダ
MotorWare™	ツール・フォルダ

特長

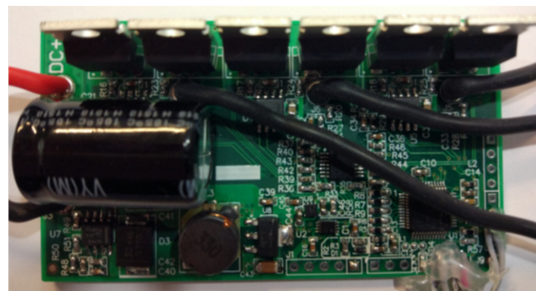
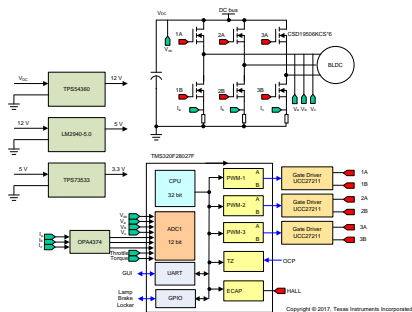
- BLDCモータおよびPMSM用の、センサレスFOCベースのInstaSPINによる最大500Wの電力段、入力範囲全体にわたって90%を超える効率
- 30V~54Vの入力電圧範囲、50Aのピーク出力電流能力
- 小さな外形(LxW): 80mmx45mm、広い周囲温度範囲でのテスト: -40°C~55°C
- 過電流、過電圧と低電圧、過負荷と低負荷、位相消失、位相不均衡、ストール、モータ過熱、電源モジュール過熱、通信途絶に対する保護
- 高性能の速度制御、InstaSPIN-FOCによる高い軌道変更および速度逆転能力を含む
- モータのパラメータの自動識別、フライング・スタート機能により既に動作中のモータと同期

アプリケーション

- 電動アシスト自転車および電動スクーター
- パワー・ツール
- 低電圧、大電力のファンおよびポンプ



[E2Eエキスパートに質問](#)





使用許可、知的財産、その他免責事項は、最終ページにあるIMPORTANT NOTICE(重要な注意事項)をご参照くださいますようお願いいたします。英語版のTI製品についての情報を翻訳したこの資料は、製品の概要を確認する目的で便宜的に提供しているものです。該当する正式な英語版の最新情報は、www.ti.comで閲覧でき、その内容が常に優先されます。TIでは翻訳の正確性および妥当性につきましては一切保証いたしません。実際の設計などの前には、必ず最新版の英語版をご参照くださいますようお願いいたします。

1 System Description

The TIDM-1003 reference design is an InstaSPIN-FOC solution implemented on a high-power stage for brushless motor control intended for power tools, e-bikes, e-scooters, and similar applications. Compared to conventional brushed motors, permanent magnet brushless motors exhibit advantages such as high efficiency, high torque-to-weight ratio, low maintenance, high reliability, and low rotor inertia. A brushless permanent-magnet synchronous motor (PMSM) has a wound stator and a permanent magnet rotor assembly. These motors generally use internal or external devices to sense the rotor position. The sensing devices provide position information for electronically switching the stator windings in the proper sequence to maintain rotation of the magnet assembly. The sensor-based solution requires accurate mechanical assembly of sensors. The rotor position can also be estimated using sensorless algorithms implemented in microcontroller units (MCUs).

An electronic drive is required to control the stator currents in a brushless permanent magnet motor. The electronic drive has the following parts:

- Power stage with a three-phase inverter
- Gate driver for driving the three-phase inverter
- MCU to implement the motor control algorithm
- Position sensor for accurate motor rotor angle to implement current commutation
- Power supply to power the MCU

Permanent magnet motors can be classified based on Back-EMF (BEMF) profiles: brushless direct current (BLDC) motor and permanent magnet synchronous motor (PMSM). Both BLDC motors and PMSMs have permanent magnets on the rotor but differ in the flux distributions and BEMF profiles. In a BLDC motor, the BEMF induced in the stator is trapezoidal, and in a PMSM, the BEMF induced in the stator is sinusoidal. Implementing an appropriate control strategy is required to obtain the maximum performance from each type of motor.

1.1 Key System Specifications

表 1. Key System Specifications

PARAMETER	SPECIFICATIONS
DC input voltage	48-V nominal (30-V minimum, 54-V maximum)
Maximum input DC current	10 A
Maximum peak output current	50 A
Rated power capacity	500 W
Inverter switching frequency	20 kHz
Inverter efficiency	≥ 95% (theoretical) at rated load
Power supply for MCU	3.3 V ± 5%
Protection	Overcurrent, overtemperature, overvoltage, undervoltage
PCB size (L × W)	80 mm × 45 mm

2 System Overview

2.1 Traditional FOC for PMSM

The PMSM has a sinusoidal BEMF. The sinusoidal BEMF motor offers its best performances when driven by sinusoidal currents and constant torque will be produced. In sinusoidal current control, three phases of the motor are ON at the same time.

Field oriented control (FOC) is used to control the permanent magnet motor. FOC achieves better dynamic performance. The goal of FOC (also called vector control) on the synchronous or asynchronous machine is to separately control the torque producing flux and magnetizing flux components. Several mathematical transforms are required to decouple the torque and magnetizing flux components of the stator current as [Fig 1](#). The processing capability provided by the MCUs enables these mathematical transformations to be carried out very quickly. These transformations in turn imply that the entire algorithm controlling the motor can be executed at a fast rate, enabling a higher dynamic performance.

The FOC algorithm enables real-time control of torque and rotation speed. As this control is accurate in every mode of operation (steady state and transient), no oversize of the power transistors is necessary. The transient currents are constantly controlled in amplitude. Moreover, no torque ripple appears when driving this sinusoidal BEMF motor with sinusoidal currents.

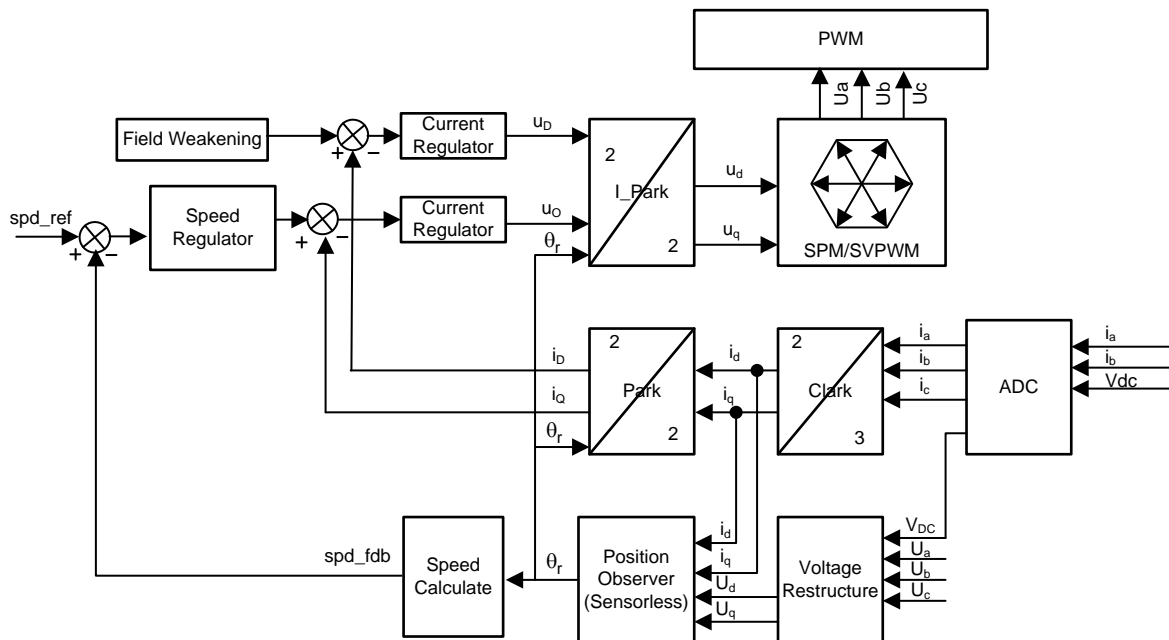
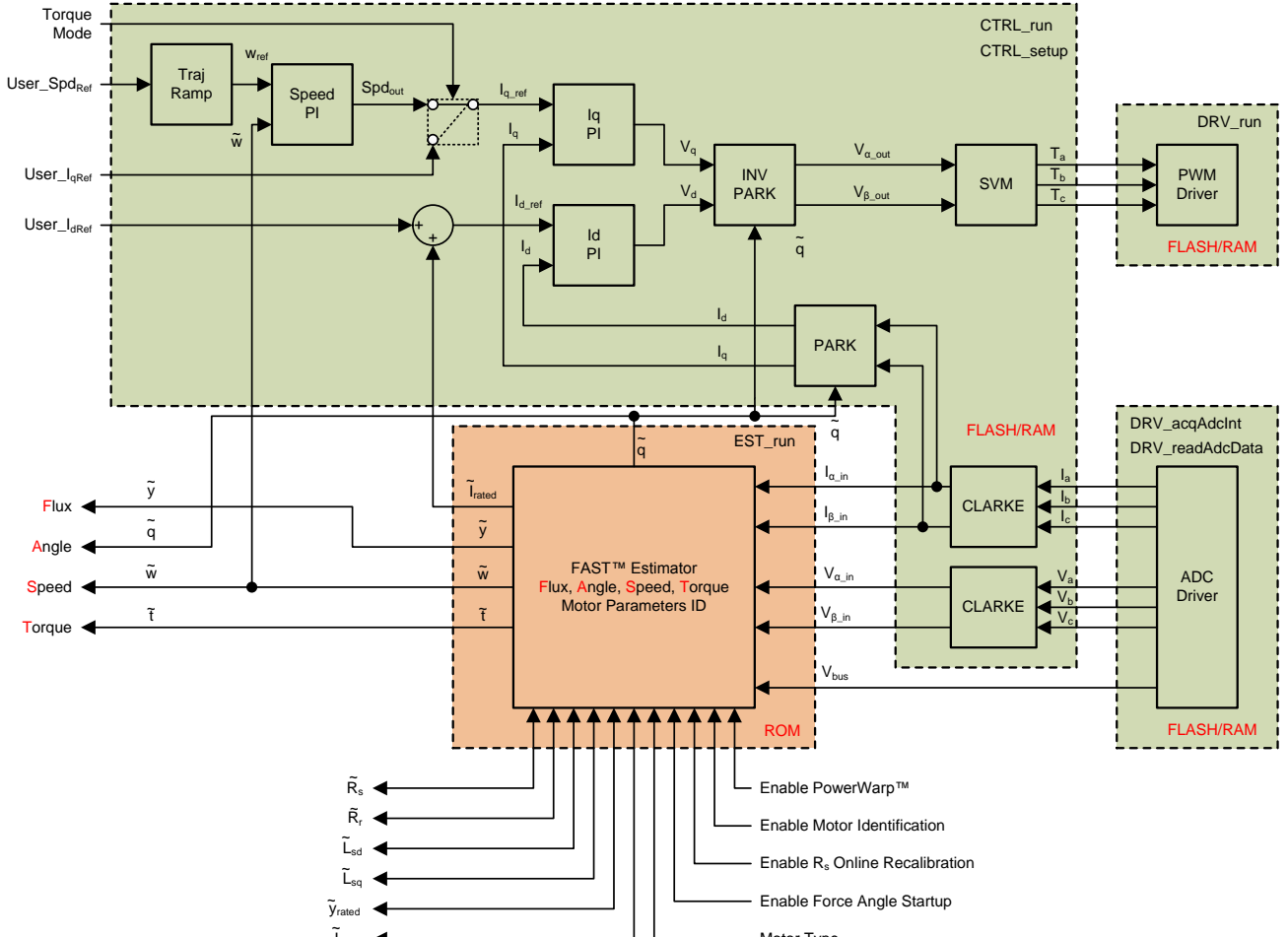


図 1. Block Diagram of FOC

2.2 InstaSPIN-FOC for PMSM

TI's InstaSPIN-FOC technology enables designers to identify, tune, and fully control any type of three-phase, variable speed, sensorless synchronous, or asynchronous motor control system. This new technology removes the need for a mechanical motor rotor sensor to reduce system costs and improve operation using TI's new software encoder (sensorless observer) software algorithm, FAST™ (flux, angle, speed, and torque), embedded in the read-only memory (ROM) of Piccolo™ devices. This ROM enables premium solutions that improve motor efficiency, performance, and reliability in all variable-speed and variable-torque applications.  2 shows the block diagram of the InstaSPIN-FOC.

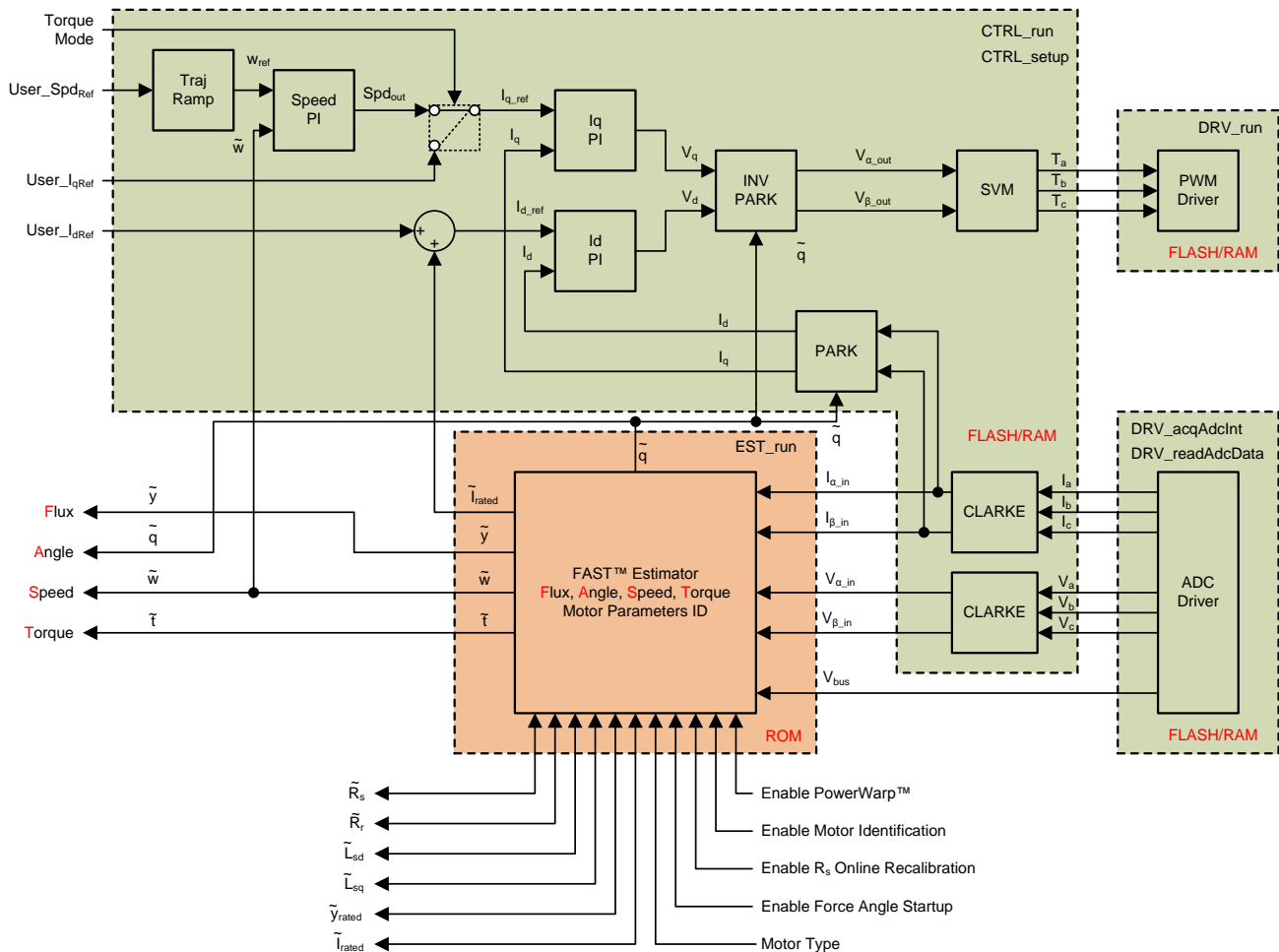


図 2. Block Diagram of InstaSPIN-FOC

InstaSPIN-FOC benefits include the following:

- FAST estimator to measure rotor flux magnitude, rotor flux angle, motor shaft speed, and torque in a sensorless FOC system
- Automatic torque (current) loop tuning with option for user adjustments
- Automatic configuration of speed loop gains (Kp and Ki) provides stable operation for most applications and user adjustments required for optimum transient response
- Automatic or manual field weakening and field boosting
- Bus voltage compensation
- Automatic offset calibration ensures quality samples of feedback signals

2.3 Drive Controller Block Diagram

Figure 3 shows the block diagram of the motor drive controller. The main parts of the power stage consists of the InstaSPIN-FOC controller TMS320F28027F, the three-phase MOSFET bridge, the gate driver UCC27211, a 3.3-V step-down DC-DC converter, ESD protection, overtemperature protection, and the current and voltage sense feedback circuits.

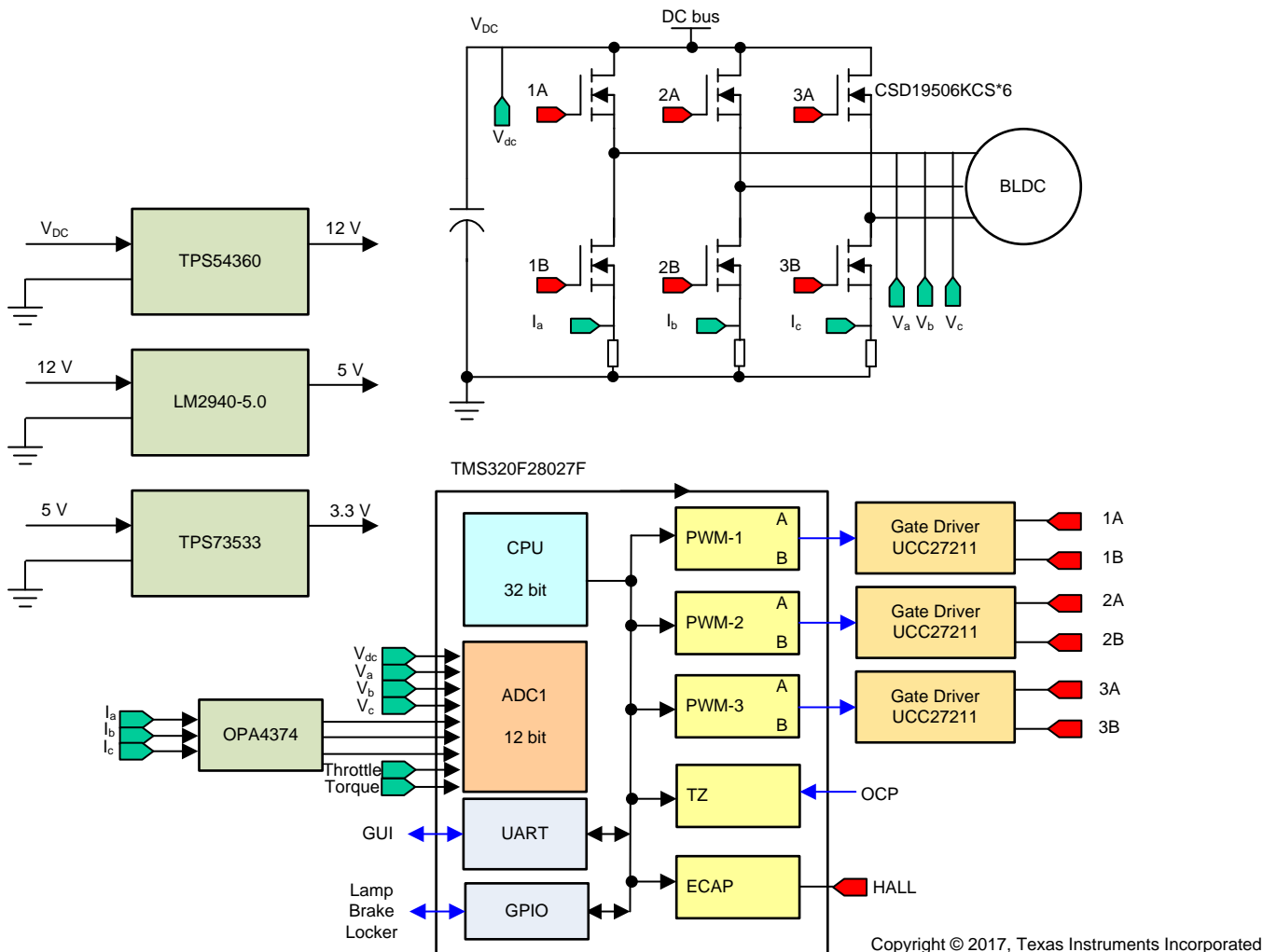


Figure 3. Drive Controller Block Diagram

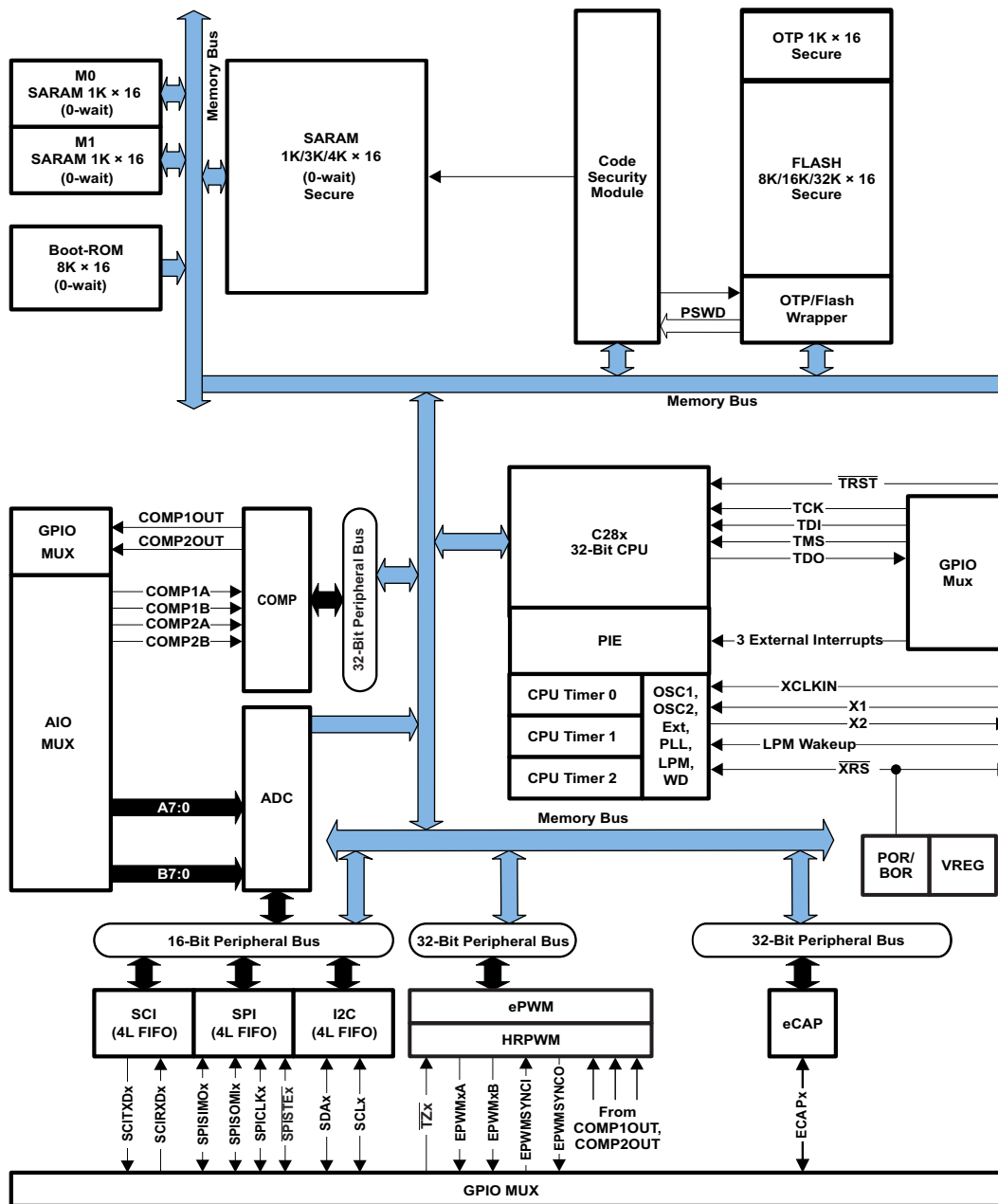
2.4 Highlighted Products

2.4.1 TMS320F28027F

The TMS320F28027F microcontroller is the C28x core coupled with highly integrated control peripherals in low pin-count devices, as shown in Figure 4. An internal voltage regulator allows for single-rail operation. Analog comparators with internal 10-bit references have been added and can be routed directly to control the PWM outputs. The ADC converts from 0- to 3.3-V fixed full-scale range and supports ratio-metric VREFHI/VREFLO references. The ADC interface has been optimized for low overhead and latency. The device also supports advanced emulation features such as analysis and breakpoint functions and real-time debug through hardware.

The TMS320F28027F includes the FAST estimator and additional motor control functions needed for cascaded speed and torque loops for efficient three-phase FOC. TMS320F28027F peripheral drivers in user code enable a sensorless InstaSPIN-FOC solution that can identify, tune the torque controller, and efficiently control a motor in minutes without the use of any mechanical rotor sensors. This entire package is called InstaSPIN-FOC. The FAST estimator is called from protected ROM, while the rest of the functions required for InstaSPIN-FOC reside in user memory (flash and RAM). InstaSPIN-FOC was designed for flexibility to accommodate a range of system software architectures and customizations.

The InstaSPIN sensorless, three-phase motor solutions makes designing motor control applications easier whether it is a simple application or a complex design.



Copyright © 2017, Texas Instruments Incorporated

図 4. TMS320F28027F Functional Block Diagram

2.4.2 UCC27211D

The UCC27211D MOSFET driver (shown in 図 5) is based on the popular UCC27200 and UCC27201 MOSFET drivers, but offers several significant performance improvements. Peak output pullup and pulldown current has been increased to 4-A source and 4-A sink, and pullup and pulldown resistance have been reduced to 0.9 Ω, thereby allowing for driving large power MOSFETs with minimized switching losses during the transition through the Miller plateau of the MOSFET. The input structure is now able to directly handle $-10 V_{DC}$, which increases robustness and also allows direct interface to gate-drive transformers without using rectification diodes. The inputs are also independent of supply voltage and have a maximum rating of 20 V.

The switching node (HS pin) of the UCC27211 can handle a maximum of $-18 V$, which allows the high-side channel to be protected from inherent negative voltages caused by parasitic inductance and stray capacitance. Supporting TTL inputs, the UCC27211 has increased hysteresis allowing for interface to analog or digital PWM controllers with enhanced noise immunity. The low-side and high-side gate drivers are independently controlled and matched to 2 ns between the turnon and turnoff of each other.

An on-chip 120-V rated bootstrap diode eliminates the external discrete diodes. Undervoltage lockout is provided for both the high-side and the low-side drivers providing symmetric turnon and turnoff behavior and forcing the outputs low if the drive voltage is below the specified threshold.

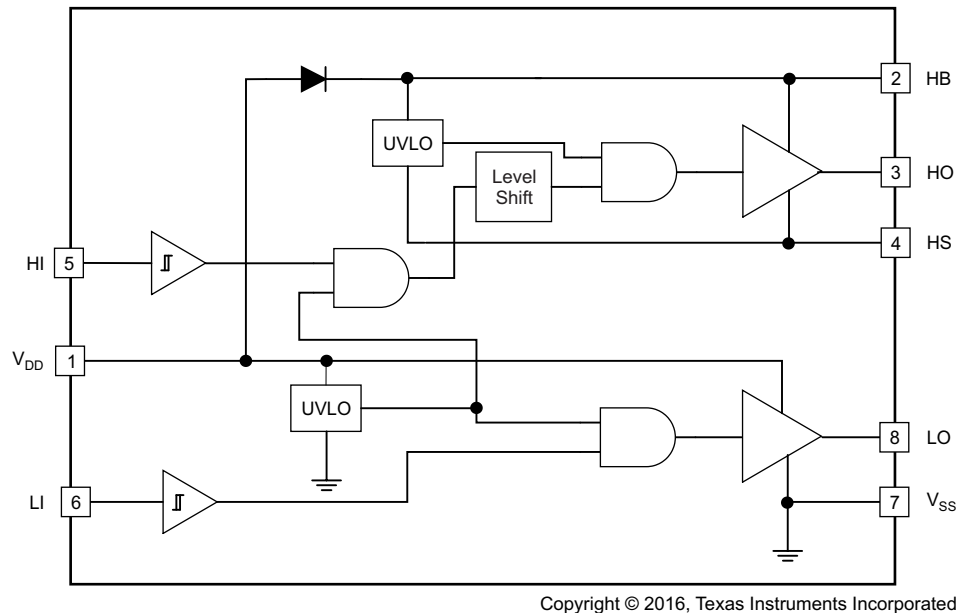


図 5. UCC27211D Functional Block Diagram

2.4.3 TPS54360D

The TPS54360 is a 60-V, 3.5-A, step-down regulator with an integrated high-side MOSFET as shown in 図 6. The device survives load dump pulses up to 65-V per ISO7637 standards. Current mode control provides simple external compensation and flexible component selection. A low-ripple pulse skip mode reduces the no-load supply current to 146 μ A. Shutdown supply current is reduced to 2 μ A when the enable pin is pulled low.

Undervoltage lockout is internally set at 4.3 V, but can be increased using the enable pin. The output voltage start-up ramp is internally controlled to provide a controlled start-up and eliminate overshoot. A wide-switching frequency range allows either efficiency or external component size to be optimized. Frequency holdback and thermal shutdown protects internal and external components during an overload condition.

The TPS54360 is available in an 8-terminal thermally enhanced HSOIC PowerPAD™ package.

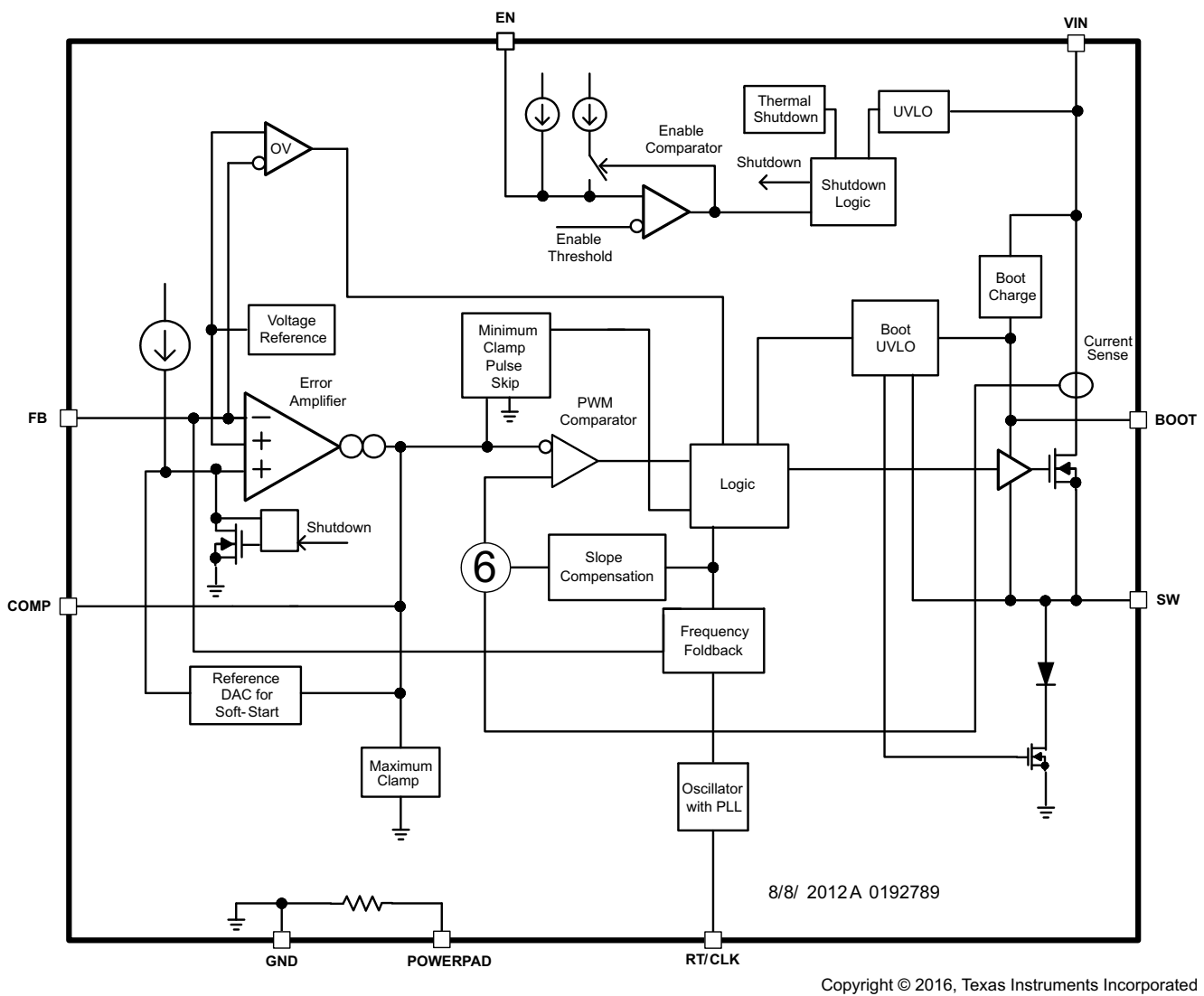


図 6. TPS54360 Functional Block Diagram

2.4.4 OPA4374

The OPA374 operational amplifier is low power and low cost with excellent bandwidth (6.5 MHz) and slew rate (5 V/μs). The input range extends 200 mV beyond the rails, and the output range is within 25 mV of the rails. The speed-power ratio and small size make them ideal for portable and battery-powered applications.

The OPA4374 includes a shutdown mode. Under logic control, the amplifiers can be switched from normal operation to a standby current that is less than 1 μA. The OPA4374 operational amplifier is specified for single or dual power supplies of 2.7 to 5.5 V, with operation from 2.3 to 5.5 V. All models are specified for -40°C to 125°C.

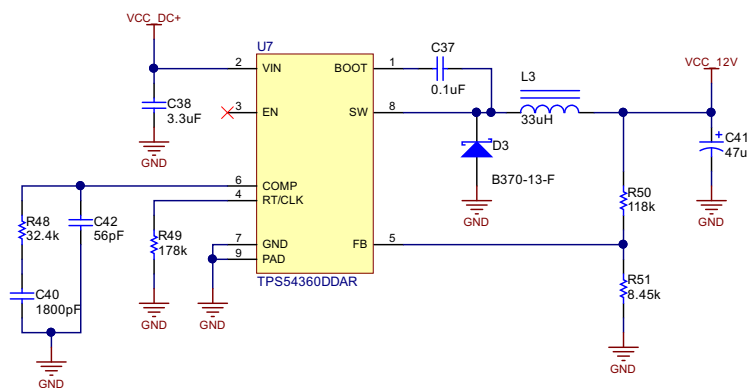
2.5 System Design Theory

The motor drive controller is composed of two main components. The first component is the TMS320F28027F MCU, which accepts the speed or torque reference from an external signal, measures the phase voltage and current signals of the motor, and generates the appropriate control signals for the power stage. The second component is the power inverter stage, which consists of the gate driver and power MOSFETs. The power stage amplifies the control signals from the MCU to the motor.

The motor drive controller uses InstaSPIN-FOC, a sensorless FOC algorithm for BLDC motors. FOC allows for optimal efficiency and noise performance from the motor being driven by the controller. InstaSPIN-FOC uses the signals from the motor BEMF and phase currents to interpolate where the motor rotor is located and send the correct drive patterns. Power is supplied to the motor controller from the main power input through a switching buck converter and two LDOs.

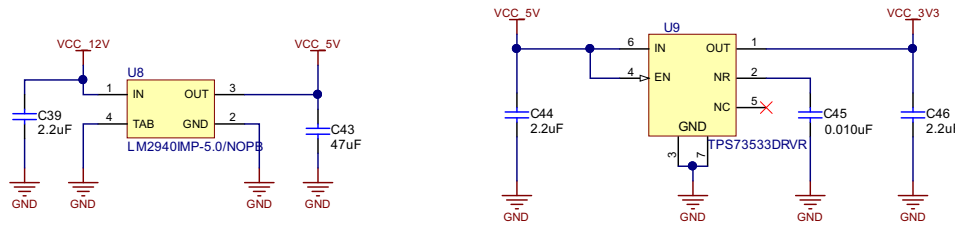
2.5.1 Power Supply for MCU and Driver

The buck converter TPS54360 converts the input DC voltage to a 12-V output for MOSFET driver and the next stage, as shown in 図 7. The LM2940 takes the 12-V input and converts it to 5 V. The TPS73533 generates the 3.3 V for the MCU power supply and other control or sampling condition circuits as 図 8. These ICs compose the auxiliary power supply function for the system.



Copyright © 2017, Texas Instruments Incorporated

図 7. 12-V Power Supply Schematic



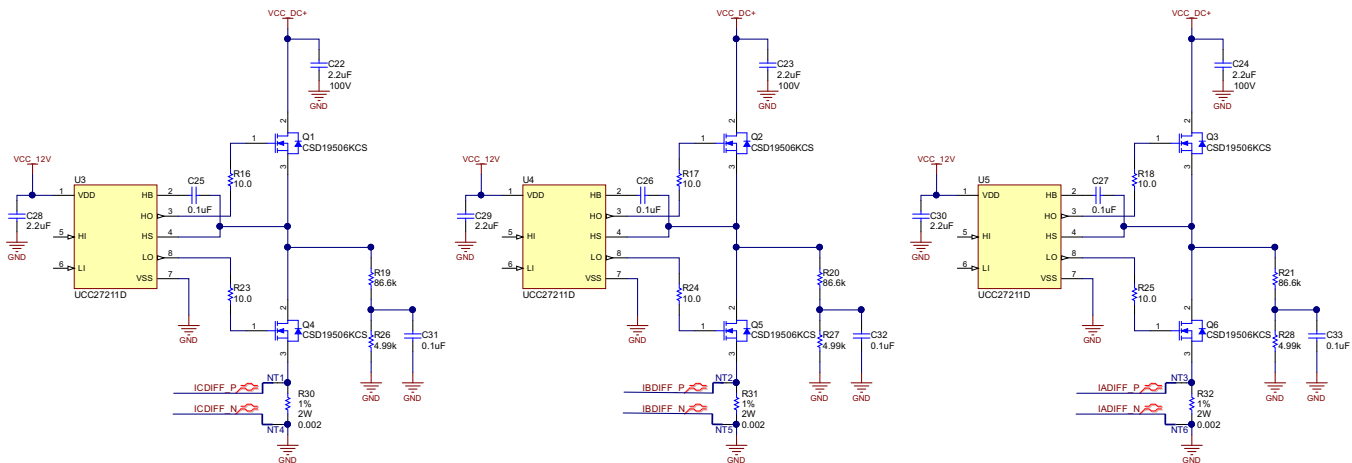
Copyright © 2017, Texas Instruments Incorporated

図 8. 5-V and 3.3-V Power Supply Schematic

2.5.2 Three-Phase Inverter and MOSFET Gate Driver

The power circuit shown in 図 9 consists of a three-leg MOSFET bridge. The leg currents are measured using three current shunt sensors: R30, R31, and R32. The sensed currents are fed to the MCU through the current amplifiers. A gate resistance of 10 Ω is used at the input of all MOSFET gates. C22, C23, and C24 are the decoupling capacitors connected across each inverter leg.

注: For better decoupling, connect these decoupling capacitors very near to the corresponding MOSFET legs.



Copyright © 2017, Texas Instruments Incorporated

図 9. Three-Phase Inverter and MOSFET Gate Driver Schematic


2.5.2.1 Power MOSFET Selection

The board is designed for voltage ranging from 30 to 54 V, which means the maximum input DC voltage in the application is 54 V. Considering the safety factor and switching spikes, the MOSFET with a voltage rating of 1.5 times the maximum input voltage can be selected. A MOSFET with a voltage rating greater than or equal to 80 V is suitable for this application.

The current rating of the MOSFET depends on the peak winding current. The power stage has to provide a 15-A_{RMS} nominal current to the motor winding, so the peak value of the winding current will be $15 \times \sqrt{2} = 21.2$ A. Considering an overloading of 200% for startup with a full load, the peak winding current will be 45 A.

For better thermal performance, MOSFETs with very low $R_{DS(ON)}$ are better for high current applications. In the reference design, the MOSFET CSD19506 is selected, which is a 80V N-Channel NexFET power MOSFET with a $R_{DS(ON)}$ of 2.0 m Ω and features a very low requirement for the total gate charge. The CSD19506 has a continuous drain current capacity (package limited) of 150 A and a peak current capacity of 400 A.

2.5.2.2 Gate Driver Selection

The UCC27211D is used as the gate driver IC for the three-phase motor drive; as such, it is capable of driving two N-channel MOSFETs in high-side and low-side configuration with independent inputs, up to 4-A sink and source output currents, and a 120- V_{DC} maximum boot voltage.  9 shows the schematic of the gate driver section as well.

2.5.3 Three-Phase Current and Voltage Sampling Circuit

The InstaSPIN-FOC algorithm for controlling the motor makes use of sampled measurements of the DC bus power supply voltage, the voltage of each motor phase, and the current of each motor phase, as shown in [Figure 10](#).

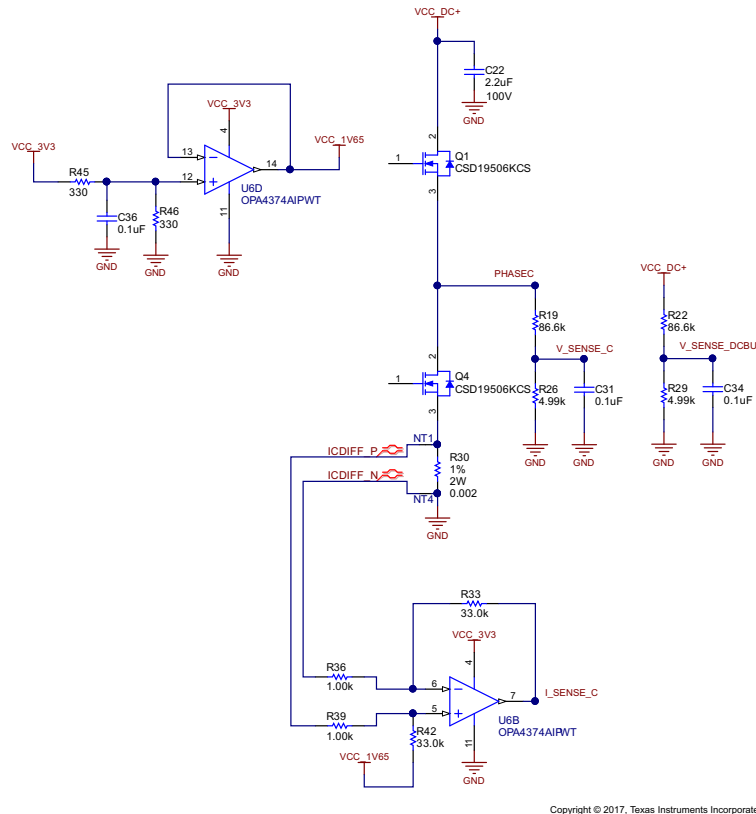


Figure 10. Phase Current and Voltage Sampling Circuit Schematic

2.5.3.1 Current Shunt Resistor Selection

Power dissipation in shunt resistors is important when selecting the shunt resistance values. The nominal RMS winding current in a motor is 15 A. By selecting a 2-mΩ resistor as the shunt resistor, the power loss in the resistor at 15 A_{RMS} is:

$$I_{RMS}^2 \times R_{SHUNT} = 15^2 \times 0.002 = 0.45 \text{ W} \tag{1}$$

Equation 1 shows that it is sufficient to select a standard 2-W, 2512-package resistor.

2.5.3.2 Motor Current Feedback Sampling Circuit

During each PWM cycle, the current through the motor is sampled by the microcontroller ADC as part of the motor control algorithm. The circuit shown in [Figure 10](#) shows how the motor current is represented as a voltage signal, with filtering, amplification, and offset to the center of the ADC input range. This circuit is used for each of the three motor phases. The low-side current through phase A flows through shunt resistor (R30), giving a scale factor of 1 mV per amp.

The differential gain amplifier circuit (U6B and surrounding components) has a differential gain of 33, with an offset of approximately 1.65 V provided by the VCC_1V65 voltage. After the gain provided by the op amp circuit, the motor current scale factor at the input to the ADC is 20 mV/A, with a voltage of 1.65 V representing zero motor current. Thus, with a range of 0 to 3.3 V at the input of the ADC, motor currents of $(1.65 \div 33) / 0.002 = \pm 25$ A can be measured.

2.5.3.3 Motor Voltage Feedback Sampling Circuit

The voltage divider circuit shown in [Figure 10](#) is used to measure the BEMF of the un-energized winding. BEMF feedback is needed for sensorless control to estimate the position of the rotor for accurate commutation. The maximum phase voltage feedback measurable by the MCU can be calculated as follows, considering the maximum voltage for the ADC input is 3.3 V:

$$V^{\text{MAX}} = V_{\text{ADC}}^{\text{MAX}} \times \text{Gain} = 3.3 \times \frac{(86.6 + 4.99)}{4.99} = 60.5 \text{ V} \quad (2)$$

Considering a 15% headroom for this value, the maximum voltage input to the system is recommended to be $60.5 \times 0.85 = 52$ V.

3 Getting Started Hardware and Software

3.1 Hardware

3.1.1 Connections for Drive Controller

The reference design can be powered from a compatible battery or DC power supply from 30 to 52 V. The supply is connected to the drive controller through the two solder pads labeled DC+ and DC-. The three motor phases can be connected to the three solder pads labeled J7, J6, and J5. The speed reference signal from the central controller is connected to the drive controller through a four-pin SCI header (JP1) or can be read as an analog voltage signal through a three-pin header (J4).

The XDS100v2 JTAG connection allows for programming and debugging of the TMS320F28027F controller. A tag-connect adapter is used to minimize the board space require for the JTAG connector.

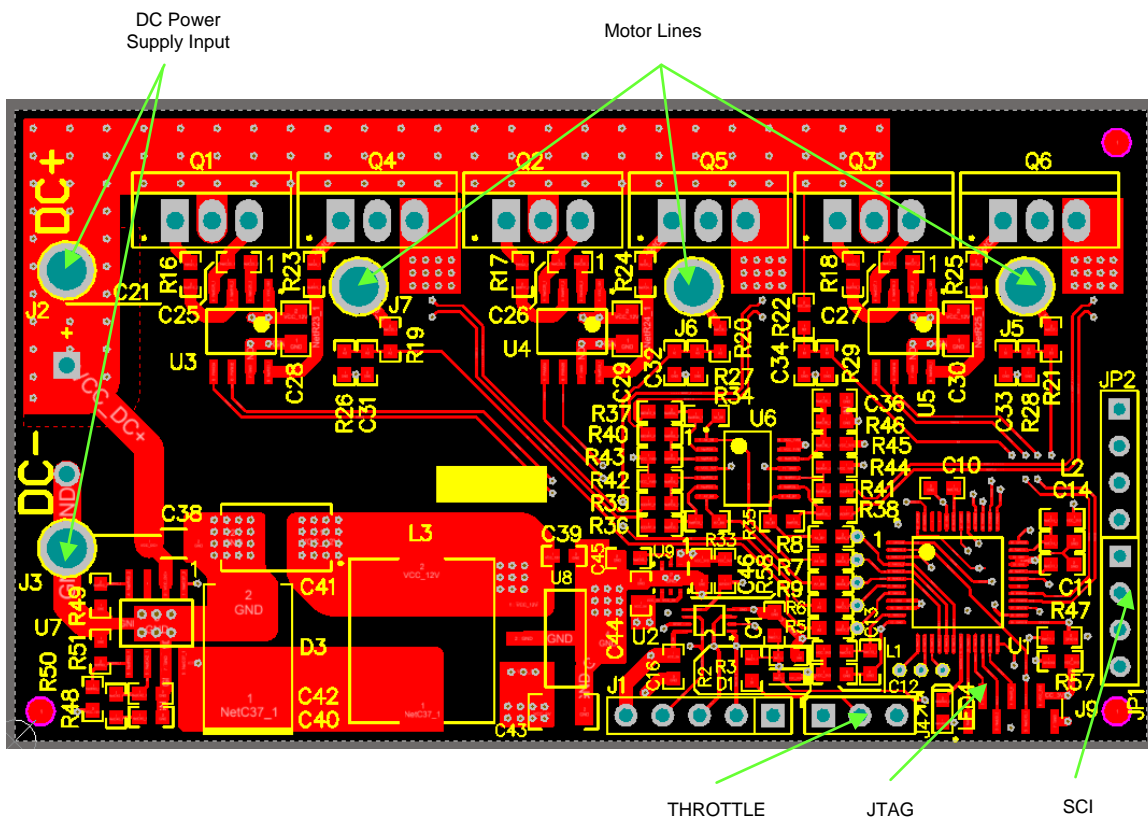


図 11. Drive Controller Connections

3.1.2 Test Steps

Follow these steps to get started with the reference design hardware:

1. Connect the power supply or battery to the design through the J2 and J3 solder pads.
2. Connect the motor phase wires to the design through the J5, J6, and J7 solder pads.
3. Attach the JTAG debugger, enable the power supply, and program the onboard TMS320F28027F MCU. The debugger can remain connected to interface to the design through JTAG.
4. Remove the debugger and send the appropriate control signal through the JP1 or J4 headers.

3.2 Firmware

3.2.1 Download and Install CCS and MotorWare

This TI Design uses MotorWare for the BLDC motor control and system controllers. To get started, go and download the latest version from [www.TI.com](http://www.ti.com). See the Code Composer Studio™ (CCS) web page at <http://www.ti.com/tool/ccstudio> for information on downloading the integrated development environment for the C2000™ code.

The MotorWare software can be downloaded from the Texas Instruments web site at <http://www.ti.com/tool/MOTORWARE>. Follow the installation instructions to install on a local computer.

3.2.2 Add Custom Hardware to MotorWare

After installing the MotorWare and CCS software, follow these steps to add the files necessary to use MotorWare with the TIDM-1003 board:

1. Navigate to C:\ti\motorware\motorware_1_01_00_17\sw. All changes made for this TI Design are completed in "sw" subfolders.
2. Create a new HAL directory to hold the contents of the zip folder labeled "TIDM-1003_sw_modules_hal_boards.zip," and copy the directory to "sw/modules/hal/boards." The folder should be named C:\ti\motorware\motorware_1_01_00_17\sw\modules\hal\boards\TIDM_1003.
3. Create a new project directory to hold the contents of the zip folder labeled "TIDM-1003_sw_solutions_instaspin_foc_boards.zip", and copy the directory to "sw/solutions/instaspin_foc/boards." The folder should be named C:\ti\motorware\motorware_1_01_00_17\sw\solutions\instaspin_foc\boards\TIDM_1003.
4. Add a new project source files directory to hold the project source code files, and name the directory C:\ti\motorware\motorware_1_01_00_17\sw\solutions\instaspin_foc\src.

3.2.3 Run Reference Design Software

1. Import the TIDM_1003 project from the MotorWare directory as shown in [Fig 12](#) and the imported project files structure as shown in [Fig 13](#).

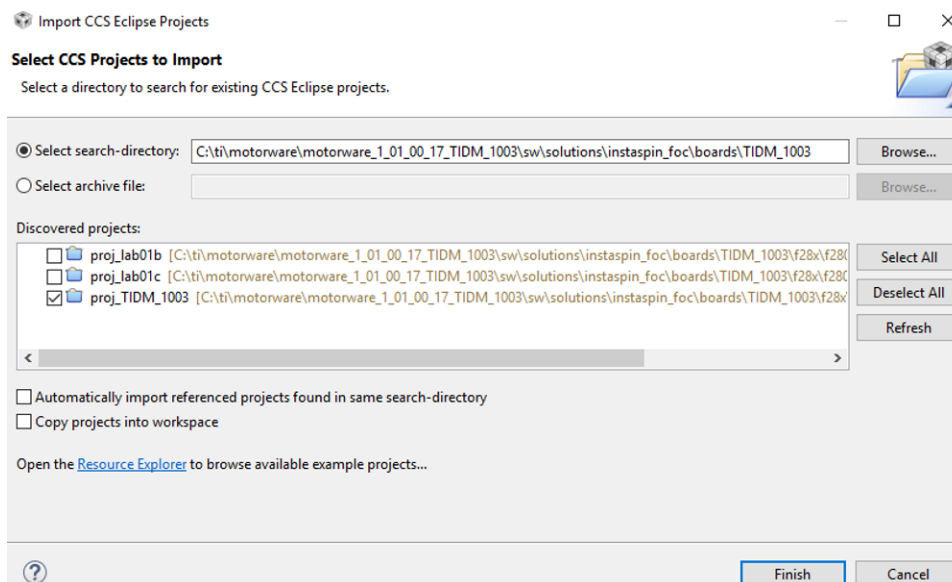


Fig 12. Import TIDM-1003 CCS Project

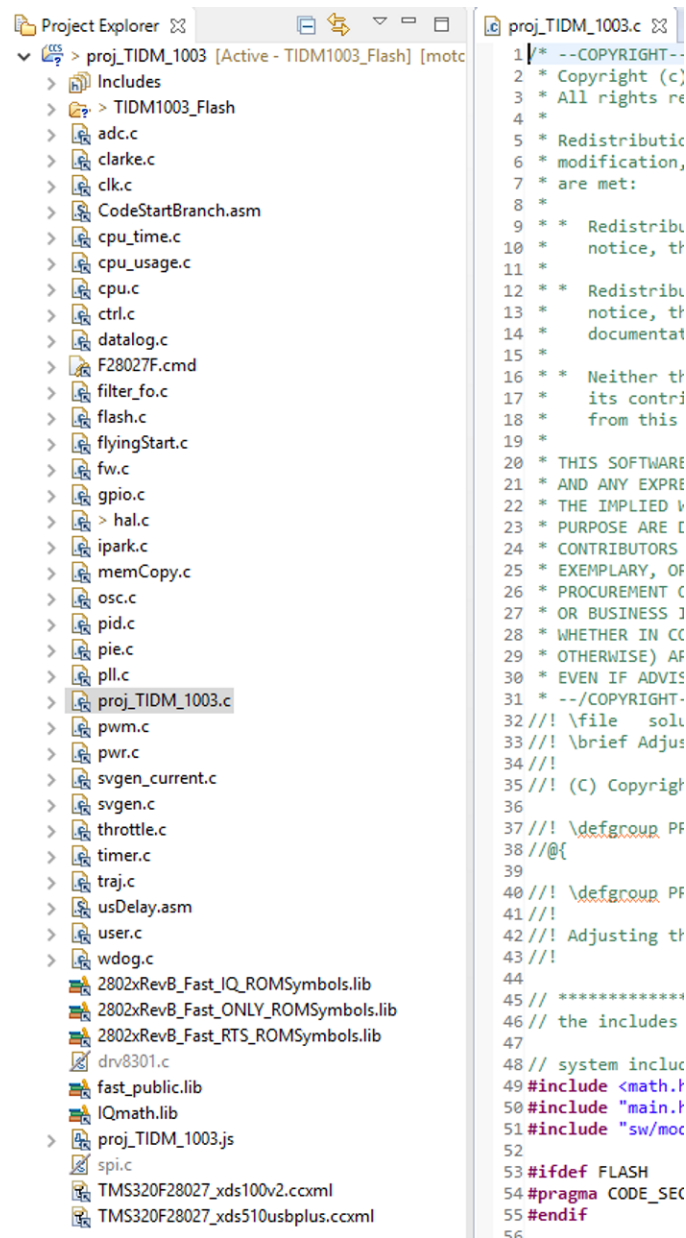




図 13. Imported TIDM-1003 Project and Files

2. Select the correct target configuration. The JTAG connection depends on the emulator being used. The target device on this reference board is TMS320F28027F.
3. Build and debug the project. Make sure the project is active by clicking the left key of mouse on the project name. Build the project by clicking the  icon on the CCS Edit toolbar. Start a debug session by clicking the  icon on the CCS Edit toolbar. The target code will be downloaded to the MCU of the reference board.
4. Run the project. Import proj_TIDM_1003.js into the CCS scripting console for the variable expressions necessary to debug, and enable Silicon Real-time mode by clicking the "clock" icon in the CCS Debug toolbar.
5. Run the motor. Set the flags Flag_enableSys and Flag_Run_Identify to 1, and change the value of SpeedRef_krpm to command speed.

4 Testing and Results

4.1 Test Setup

表 2. Test Equipment

EQUIPMENT	NAME
DC power supply	Agilent, N5769A
Oscilloscope	Agilent, DSO-X 3024A
Multimeter	Fluke, 189
Motor	Anaheim, BLY341S-48V-3200
Dynamometer	Magtrol, HD-705-6N
Dynamometer controller	Magtrol, DSP6001

4.2 Test Results

The following tests are performed to characterize each individual functional block as well as the entire board:

- Functional tests include power supply output and gate drive
- Motor parameter identification
- Motor running with load

4.2.1 Power Supply and Gate Drive Tests

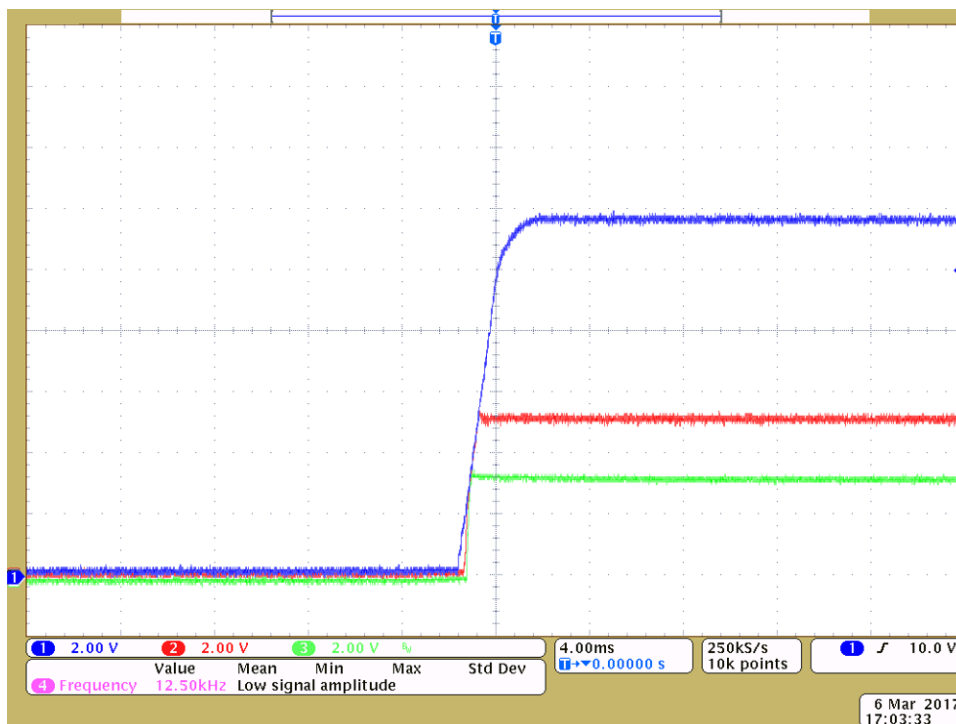


図 14. 12-, 5- and 3.3-V Power Supply Output at 36-V Power Input

- CH1 (blue): 12-V power supply for gate driver
- CH2 (red): 5-V power supply for interface

- CH3 (green): 3.3-V power supply for MCU

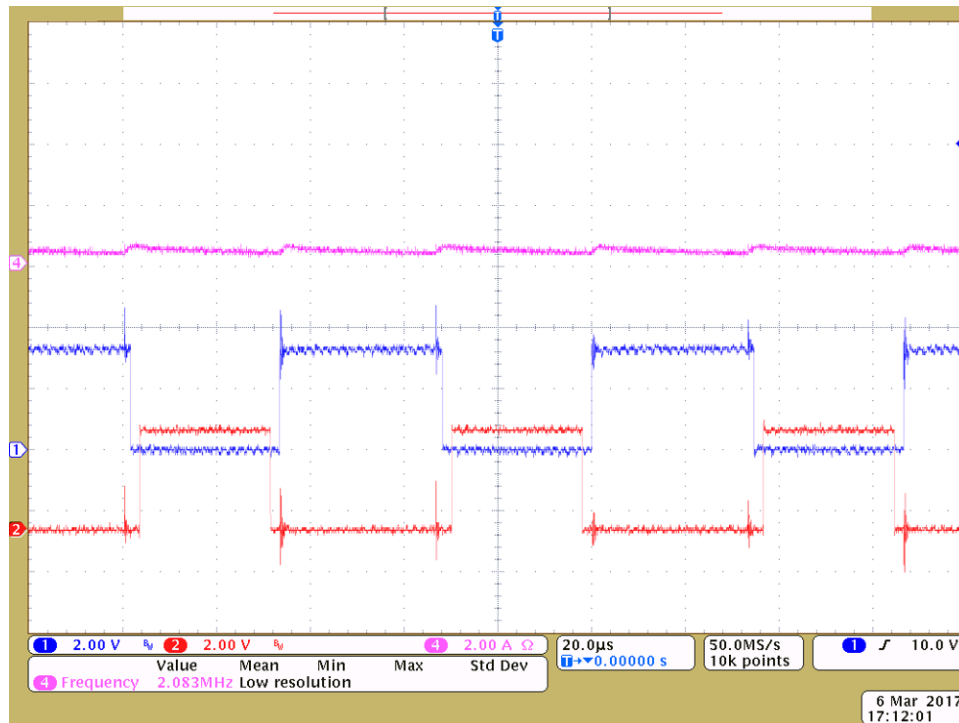


図 15. High-Side and Low-Side Gate With Dead Band From MCU

4.2.2 Motor Parameters Identification Without Load

Open user.h from the directory of the project. The user.h file has definitions of motor parameters. A few values can already be put into the user.h motor parameters, which need to be set for the actual motor parameters:

- USER_MOTOR_TYPE: The motor type, ACI, or PMSM
- USER_MOTOR_NUM_POLE_PAIRS: The number of pole pairs of the motor
- USER_MOTOR_MAX_CURRENT: The maximum nameplate current of the motor
- USER_MOTOR_RES_EST_CURRENT: The motor will have to initially be started in open loop during identification. This value sets the peak of the current used during initial startup of the motor. If the motor has high-cogging torque or some kind of load, increase this current value until the motor will start spinning. After motor identification, this value is never used.
- USER_MOTOR_IND_EST_CURRENT: For PMSMs, this value can be set to the negative of the current used for USER_MOTOR_RES_EST_CURRENT.
- USER_MOTOR_NUM_POLE_PAIRS: The number of pole pairs of the motor
- USER_MOTOR_RATED_FLUX: The motor flux linkage between the rotor and the stator

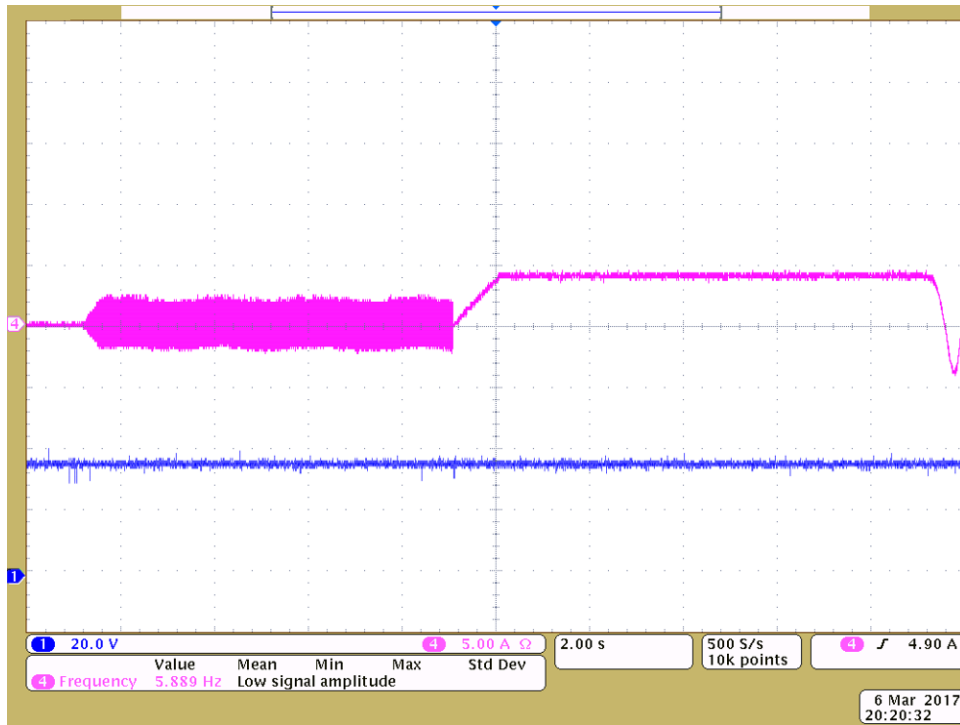


図 16. RoverL and Rs Identification State

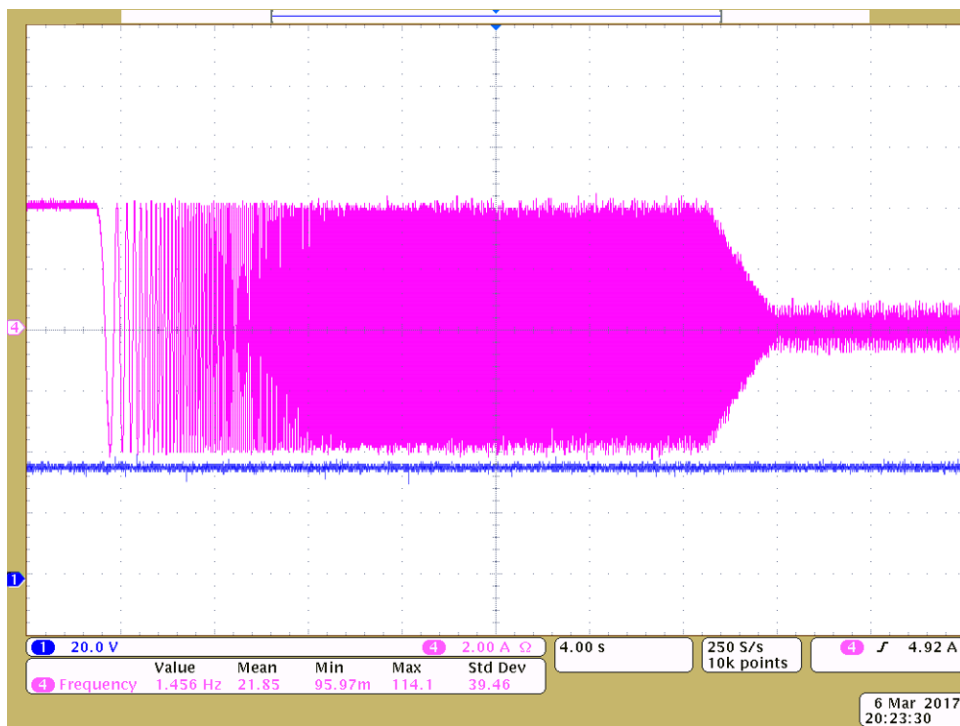


図 17. Rampup and Flux Identification State

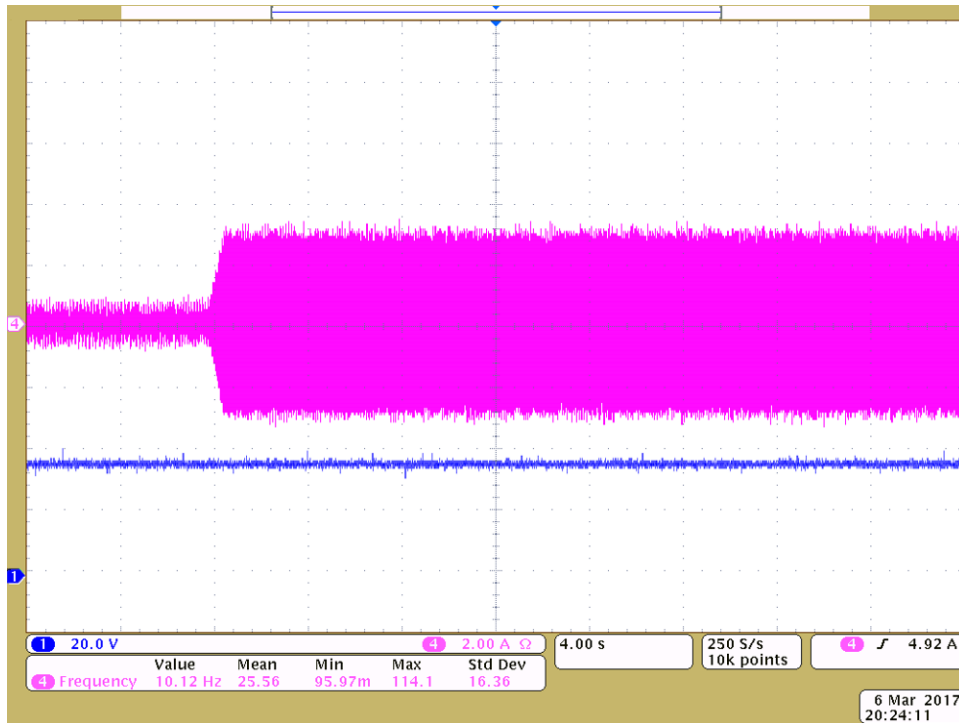


図 18. Ls Identification State

4.2.3 Motor Running Tests With Load

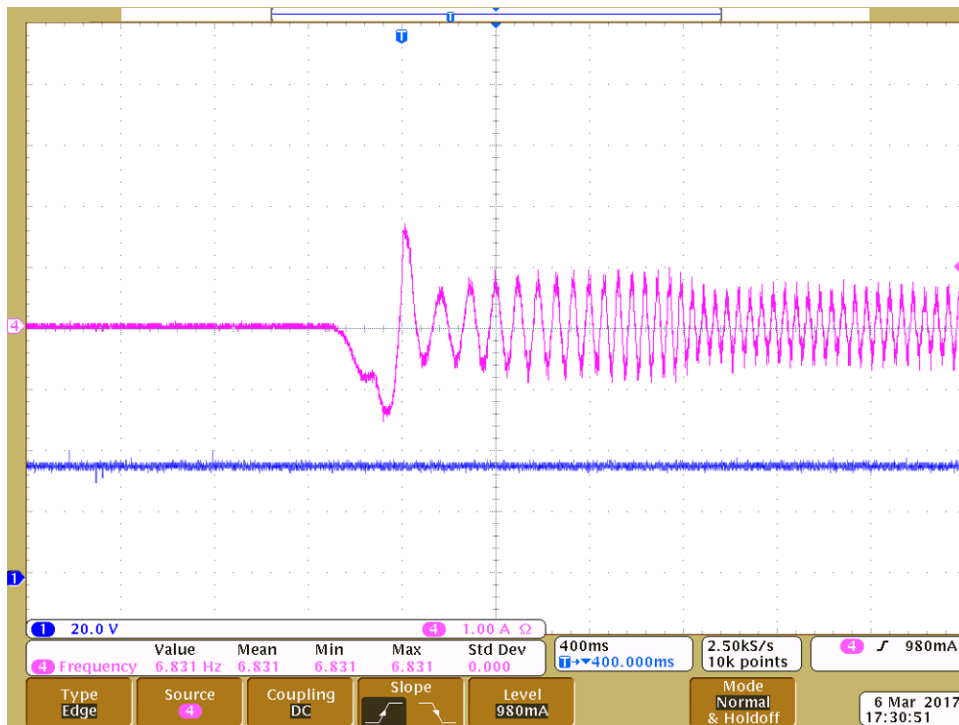
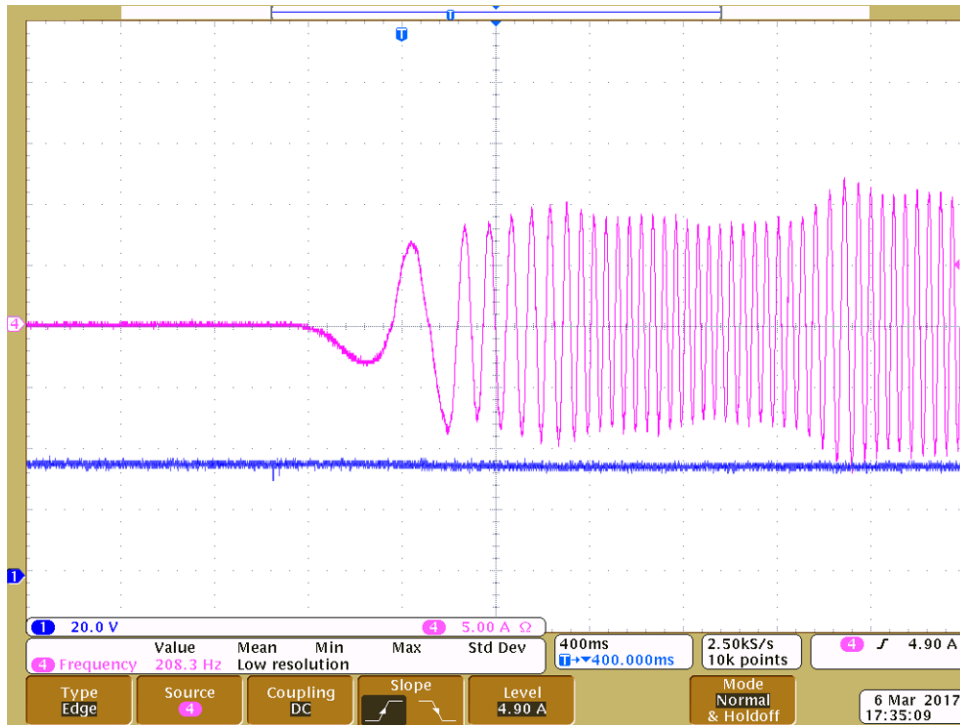
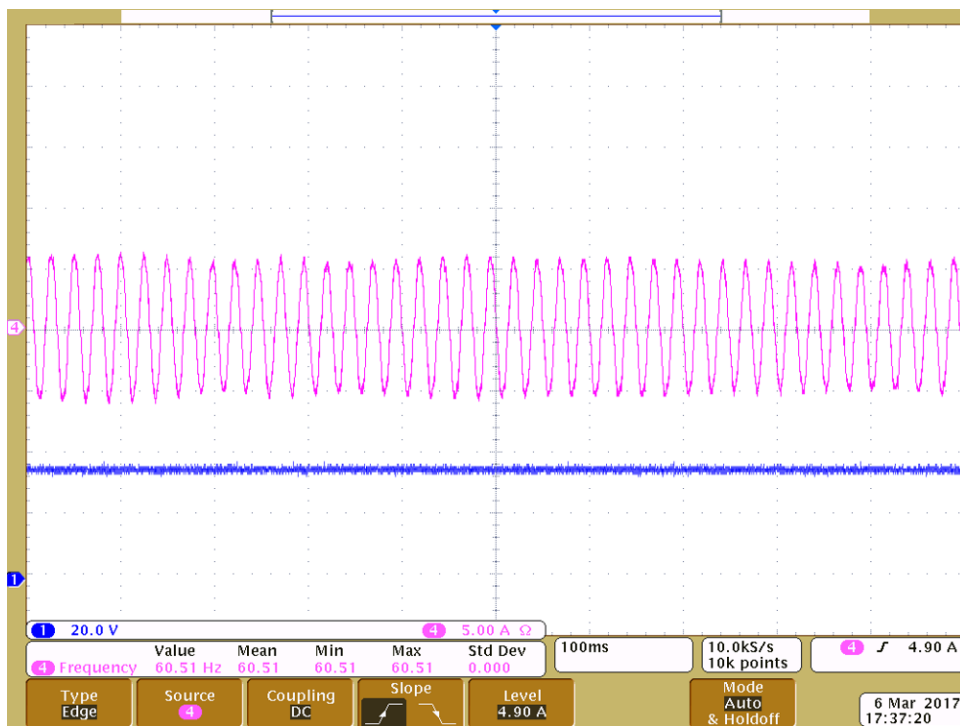


図 19. Motor Startup Without Load



20. Motor Startup With Light Load



21. Motor Running at 900 rpm With Light Load

4.2.4 Test Summary

This TI Design shows how to adapt InstaSPIN-FOC to enable low-voltage, high-current motor control using TI provided software. This control is done by using the special capabilities of the C2000 processor family for advanced system debug capabilities. This can supplement the simulation effort of the engineers to avoid developing the perfect simulation tool for the system and simply use the actual hardware to debug the control algorithm issue. This hardware removes the need to build complex simulation algorithms to define specific motor or PCB parasitic effects to the system.

5 Design Files

5.1 Schematics

To download the schematics for each board, see the design files at [TIDM-1003](#).

5.2 Bill of Materials

To download the Bill of Materials for each board, see the design files at [TIDM-1003](#).

5.3 PCB Layout Recommendations

5.3.1 Layout Prints

To download the layer plots, see the design files at [TIDM-1003](#).

5.3.2 Power Supply Recommendations

Layout is a critical portion of a good power supply design. There are several signal paths that conduct fast changing currents or voltages that can interact with stray inductance or parasitic capacitance to generate noise or degrade performance.

1. To reduce the parasitic effects, C38 was placed near VIN as a bypass capacitor, with care taken to minimize the loop area formed by the bypass capacitor (C38) connections and the VIN.
2. The GND terminal should be tied directly to the PowerPad under the TPS54360. The PowerPAD should be connected to internal PCB ground planes using multiple vias directly under the TPS54360.
3. The SW terminal should be routed to the cathode of the catch diode (D3) and to the output inductor (L3). The output filter capacitor (C41), catch diode (D3) and output inductor (L3) should be located close to the SW terminals, and the area of the PCB conductor minimized to prevent excessive capacitive coupling.
4. The RT/CLK terminal is sensitive to noise so the RT resistor (R49) should be located as close as possible to the TPS54360 and routed with minimal lengths of trace.

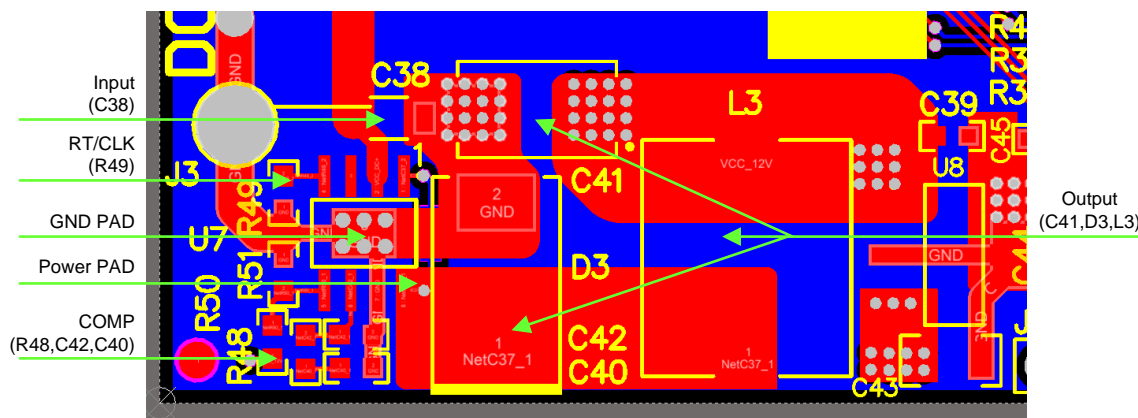


図 22. TPS54360 PCB Layout Recommendations

5.3.3 MOSFET Gate Drivers Recommendations

To improve the switching characteristics and efficiency of a design, follow these layout recommendations:

1. Locate the driver as close as possible to the MOSFETs.
2. Locate the bootstrap capacitor (C25) between VHB and VHS as close as possible to the UCC27211.
3. Locate the decoupling capacitor (C28) between VDD and VSS as close as possible to the UCC27211.
4. Avoid VDD traces being close to LO, HS, and HO signals.
5. Use wide traces for LO and HO closely following the associated GND or HS traces. A 60- to 100-mils width is preferable where possible.
6. Use as least two or more vias for VDD and GND were routed from one layer to another.
7. Avoid LI and HI (driver input) being too close to the HS node.

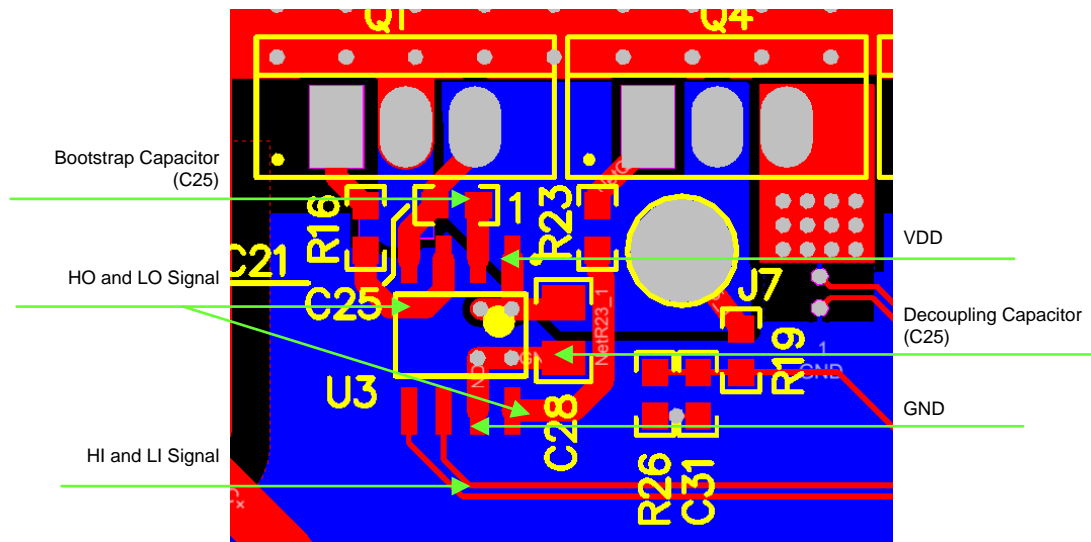


図 23. UCC27211 PCB Layout Recommendations

5.3.4 Motor Current and Voltage Signals Sampling Recommendations

1. Place the external components as close to the OPA4374 as possible, keeping RF (R34) and RG (R37) close to the inverting input of OPA4374 to minimize parasitic capacitance.
2. Use low-ESR, ceramic bypass capacitor (C35) and place it close to the OPA4374.
3. For differential signals for the motor current feedback across the current sense resistors, use symmetry to ensure that any noise picked up on one line is also picked up approximately equally on the other line. Keep the length of input traces as short as possible and run the input traces as far away from the supply lines as possible.
4. Separate grounding for analog and digital portions of circuitry is one of the simplest and most effective methods of noise suppression.
5. Keep the input filter resistors (R7) and capacitor (C4) of the anti-aliasing filter as close together and near to the inputs of the microcontroller ADC to minimize the loop area.

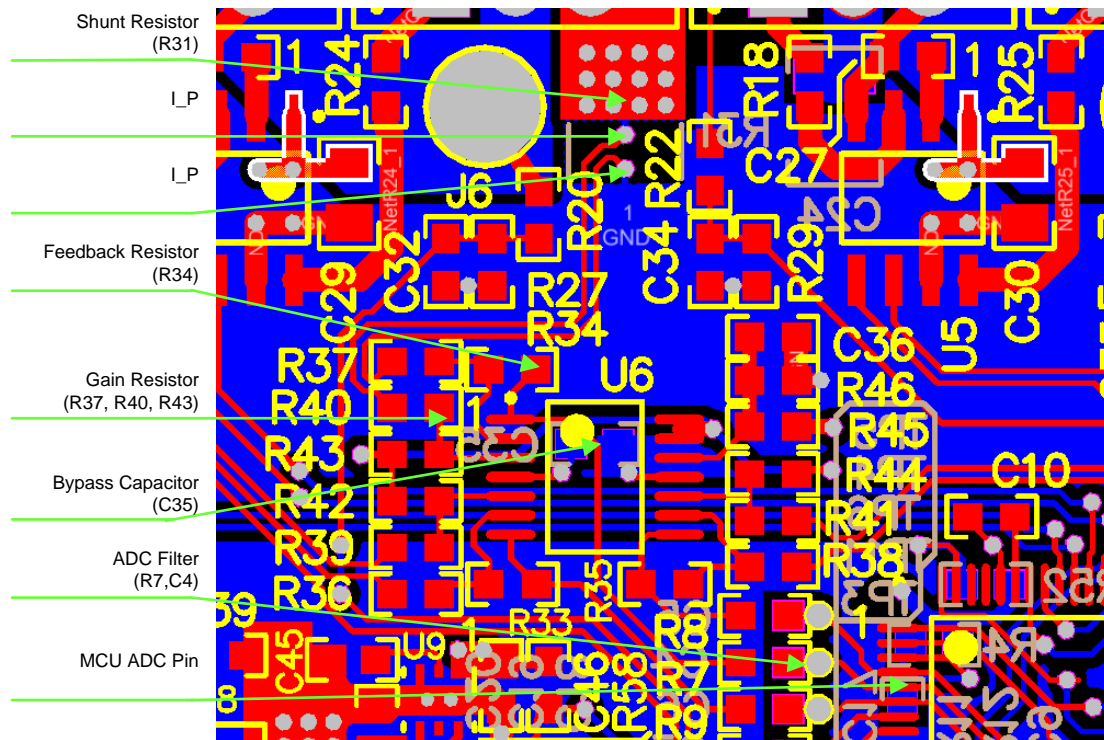


図 24. PCB Layout Recommendations for Motor Current and Voltage Sampling

5.4 Altium Project

To download the Altium project files for each board, see the design files at [TIDM-1003](#).

5.5 Gerber Files

To download the Gerber files for each board, see the design files at [TIDM-1003](#).

5.6 Assembly Drawings

To download the assembly drawings for each board, see the design files at [TIDM-1003](#).

6 Software Files

To download the software files for this reference design, see the design files at [TIDM-1003](#).

7 Related Documentation

1. Texas Instruments, [TI InstaSPIN™ Motor Control Solutions](#)
2. Texas Instruments, [Texas Instruments WEBENCH® Design Center](#)
3. Texas Instruments, [TMS320F2802x Piccolo™ Microcontrollers](#), TMS320F28027F Datasheet (SPRS523)
4. Texas Instruments, [UCC2721x 120-V Boot, 4-A Peak, High-Frequency High-Side and Low-Side Driver](#), UCC27211 Datasheet (SLUSAT7)
5. Texas Instruments, [TPS54360 60 V Input, 3.5 A, Step Down DC-DC Converter with Eco-mode™](#), TPS54360 Datasheet (SLVSBB4)
6. Texas Instruments, [CSD19506KCS 80 V N-Channel NexFET™ Power MOSFET](#), CSD19506KCS (SLPS481)
7. Texas Instruments, [InstaSPIN-FOC™ and InstaSPIN-MOTION™ User's Guide](#) (SPRUHJ1)

7.1 商標

NexFET, InstaSPIN, InstaSPIN-FOC, MotorWare, FAST, Piccolo, PowerPAD, Code Composer Studio, C2000 are trademarks of Texas Instruments.

すべての商標および登録商標はそれぞれの所有者に帰属します。

8 Terminology

FOC— Field oriented control

PMSM— Permanent magnet synchronous motor

BLDC— Brushless DC motor

MCU— Microcontroller unit

FETs, MOSFETs— Metal-oxide-semiconductor field-effect transistor

PWM— Pulse width modulation

ESD— Electrostatic discharge

TVS— Transient voltage suppressors

RPM— Rotation per minute

9 About the Authors

YANMING LUO is a systems application engineer in the system solutions team of C2000 at Texas Instruments, where he is responsible for developing reference design solutions for motor control-based C2000 controllers. Yanming has been with TI since 2003 and earned an M.S. degree from Northeastern University, China in 1998.

BIGLEY SEAN is a systems application engineer in the system solutions team of C2000 at Texas Instruments, where he is responsible for developing reference design solutions for motor control-based C2000 controllers.

TIの設計情報およびリソースに関する重要な注意事項

Texas Instruments Incorporated ("TI")の技術、アプリケーションその他設計に関する助言、サービスまたは情報は、TI製品を組み込んだアプリケーションを開発する設計者に役立つことを目的として提供するものです。これにはリファレンス設計や、評価モジュールに関する資料が含まれますが、これらに限られません。以下、これらを総称して「TIリソース」と呼びます。いかなる方法であっても、TIリソースのいずれかをダウンロード、アクセス、または使用した場合、お客様(個人、または会社を代表している場合にはお客様の会社)は、これらのリソースをここに記載された目的にのみ使用し、この注意事項の条項に従うことに合意したものとします。

TIによるTIリソースの提供は、TI製品に対する該当の発行済み保証事項または免責事項を拡張またはいかなる形でも変更するものではなく、これらのTIリソースを提供することによって、TIにはいかなる追加義務も責任も発生しないものとします。TIは、自社のTIリソースに訂正、拡張、改良、およびその他の変更を加える権利を留保します。

お客様は、自らのアプリケーションの設計において、ご自身が独自に分析、評価、判断を行う責任がお客様にあり、お客様のアプリケーション(および、お客様のアプリケーションに使用されるすべてのTI製品)の安全性、および該当するすべての規制、法、その他適用される要件への遵守を保証するすべての責任をお客様のみが負うことを理解し、合意するものとします。お客様は、自身のアプリケーションに関して、(1) 故障による危険な結果を予測し、(2) 障害とその結果を監視し、および、(3) 損害を引き起こす障害の可能性を減らし、適切な対策を行う目的で、安全策を開発し実装するために必要な、すべての技術を保持していることを表明するものとします。お客様は、TI製品を含むアプリケーションを使用または配布する前に、それらのアプリケーション、およびアプリケーションに使用されているTI製品の機能性を完全にテストすることに合意するものとします。TIは、特定のTIリソース用に発行されたドキュメントで明示的に記載されているもの以外のテストを実行していません。

お客様は、個別のTIリソースにつき、当該TIリソースに記載されているTI製品を含むアプリケーションの開発に関連する目的でのみ、使用、コピー、変更することが許可されています。明示的または黙示的を問わず、禁反言の法理その他どのような理由でも、他のTIの知的所有権に対するその他のライセンスは付与されません。また、TIまたは他のいかなる第三者のテクノロジーまたは知的所有権についても、いかなるライセンスも付与されるものではありません。付与されないものには、TI製品またはサービスが使用される組み合わせ、機械、プロセスに関連する特許権、著作権、回路配置利用権、その他の知的所有権が含まれますが、これらに限られません。第三者の製品やサービスに関する、またはそれらを参照する情報は、そのような製品またはサービスを利用するライセンスを構成するものではなく、それらに対する保証または推奨を意味するものでもありません。TIリソースを使用するため、第三者の特許または他の知的所有権に基づく第三者からのライセンス、あるいはTIの特許または他の知的所有権に基づくTIからのライセンスが必要な場合があります。

TIのリソースは、それに含まれるあらゆる欠陥も含めて、「現状のまま」提供されます。TIは、TIリソースまたはその仕様に関して、明示的か暗黙的にかかわらず、他のいかなる保証または表明も行いません。これには、正確性または完全性、権原、続発性の障害に関する保証、および商品性、特定目的への適合性、第三者の知的所有権の非侵害に対する黙示的保証が含まれますが、これらに限られません。

TIは、いかなる苦情に対しても、お客様への弁済または補償を行う義務はなく、行わないものとします。これには、任意の製品の組み合わせに関連する、またはそれらに基づく侵害の請求も含まれますが、これらに限られず、またその事実についてTIリソースまたは他の場所に記載されているか否かを問わないものとします。いかなる場合も、TIリソースまたはその使用に関連して、またはそれらにより発生した、実際の、直接的、特別、付随的、間接的、懲罰的、偶発的、または、結果的な損害について、そのような損害の可能性についてTIが知らされていたかどうかにかかわらず、TIは責任を負わないものとします。

お客様は、この注意事項の条件および条項に従わなかったために発生した、いかなる損害、コスト、損失、責任からも、TIおよびその代表者を完全に免責するものとします。

この注意事項はTIリソースに適用されます。特定の種類の資料、TI製品、およびサービスの使用および購入については、追加条項が適用されます。これには、半導体製品(<http://www.ti.com/sc/docs/stdterms.htm>)、評価モジュール、およびサンプル(<http://www.ti.com/sc/docs/sampterm.htm>)についてのTIの標準条項が含まれますが、これらに限られません。