

TI-RTOS 2.20 for MSP43x

Getting Started Guide



Literature Number: SPRUHU4E
June 2016

Preface	3
1 About TI-RTOS	4
1.1 What is TI-RTOS?	4
1.2 What are the TI-RTOS Components?	5
1.3 How Can I Find Example Projects?	6
1.4 What Compilers and Targets are Supported?	7
1.5 What Boards and Devices Have TI-RTOS Driver Examples?	7
1.6 What Drivers Does TI-RTOS Include?	7
1.7 For More Information	8
2 Installing TI-RTOS	10
2.1 System Requirements	10
2.2 Installing Code Composer Studio	11
2.3 Installing TI-RTOS in Code Composer Studio	11
2.4 Installing TI-RTOS for Use in IAR Embedded Workbench	12
2.5 Installing TI-RTOS as a Standalone Product	12
3 Examples for TI-RTOS	13
3.1 Creating Example Projects Using the Resource Explorer in CCS	14
3.1.1 Creating an Empty TI-RTOS Project	16
3.1.2 Creating Examples to Build via a Command Line	17
3.2 Creating Examples with IAR Embedded Workbench	18
3.3 Driver Examples: Readme Files and Common Features	18
3.4 MSP430 MSP-EXP430F5529LP Settings and Resources	19
3.5 MSP430 MSP-EXP430FR5969LP Settings and Resources	21
3.6 MSP430 MSP-EXP430FR5994LP Settings and Resources	23
3.7 MSP430 MSP-EXP430FR6989LP Settings and Resources	25
3.8 MSP432 MSP-EXP432P401RLP Settings and Resources	27
3.9 BoosterPacks	29
3.9.1 SD Card BoosterPack	29
3.9.2 TMP006 BoosterPack	29
3.9.3 Sharp Memory LCD BoosterPack	29
3.9.4 CC3100 BoosterPacks	30
3.9.5 RF430CL330 NFC Transponder Module	32
3.9.6 TPL0401EVM Board	32
3.10 Installing USB Drivers for the USB Device Examples	33
4 Configuring TI-RTOS	35
4.1 Starting the Configuration Tool	36
4.2 Configuring TI-RTOS Drivers	37
4.2.1 Configuring System Support	37
4.3 Configuring Components of TI-RTOS	38
Index	39

Read This First

About This Manual

This manual describes TI-RTOS for MSP43x. The version number as of the publication of this manual is v2.20.

Notational Conventions

This document uses the following conventions:

- Program listings, program examples, and interactive displays are shown in a special typeface. Examples use a bold version of the special typeface for emphasis.

Here is a sample program listing:

```
#include <xdc/runtime/System.h>
int main(void)
{
    System_printf("Hello World!\n");
    return (0);
}
```

- Square brackets ([and]) identify an optional parameter. If you use an optional parameter, you specify the information within the brackets. Unless the square brackets are in a **bold** typeface, do not enter the brackets themselves.

Trademarks

Registered trademarks of Texas Instruments include Stellaris and StellarisWare.

Trademarks of Texas Instruments include: the Texas Instruments logo, Texas Instruments, TI, TI.COM, C2000, C5000, C6000, Code Composer, Code Composer Studio, Concerto, controlSUITE, DSP/BIOS, MSP430, MSP430Ware, MSP432, SimpleLink, Sitara, SPOX, TI-RTOS, Tiva, TivaWare, TMS320, TMS320C5000, TMS320C6000, and TMS320C2000.

ARM is a registered trademark, and Cortex is a trademark of ARM Limited.

Windows is a registered trademark of Microsoft Corporation.

Linux is a registered trademark of Linus Torvalds.

IAR Systems and IAR Embedded Workbench are registered trademarks of IAR Systems AB.

All other brand or product names are trademarks or registered trademarks of their respective companies or organizations.

June 9, 2016

About TI-RTOS

This chapter provides an overview of TI-RTOS for MSP43x.

Topic	Page
1.1 What is TI-RTOS?	4
1.2 What are the TI-RTOS Components?	5
1.3 How Can I Find Example Projects?	6
1.4 What Compilers and Targets are Supported?	7
1.5 What Boards and Devices Have TI-RTOS Driver Examples?	7
1.6 What Drivers Does TI-RTOS Include?	7
1.7 For More Information	8

1.1 What is TI-RTOS?

TI-RTOS is a scalable, one-stop embedded tools ecosystem for TI devices. It scales from a real-time multitasking kernel (SYS/BIOS) to a complete RTOS solution including additional middleware components and device drivers. By providing essential system software components that are pre-tested and pre-integrated, TI-RTOS enables you to focus on creating your application.

TI-RTOS is *not* installed automatically as part of the Code Composer Studio v6.x installation. You can install TI-RTOS from the CCS App Center (choose **View > CCS App Center** in CCS). Choose the version of TI-RTOS for your device family. If you use devices in multiple families, you can install multiple TI-RTOS versions. See [Section 2.3](#) for details.



If you do not use CCS, you can [download and install TI-RTOS as a standalone product](#) (see [Section 2.5](#)). In addition to the Texas Instruments Code Generation Tools, TI-RTOS includes support for the IAR tool chain (see [Section 2.4](#)).

TI-RTOS is provided with full source code and requires no up-front or runtime license fees.

1.2 What are the TI-RTOS Components?

TI-RTOS contains its own source files, pre-compiled libraries (both instrumented and non-instrumented), and examples. Additionally, TI-RTOS contains a number of components within its "products" subdirectory. The components of TI-RTOS for MSP43x are as follows.

Table 1–1. TI-RTOS Components

TI-RTOS Component	Name	Documentation Location
TI-RTOS	TI-RTOS examples	Chapter 3 of this Getting Started Guide
TI-RTOS Kernel	SYS/BIOS	<i>SYS/BIOS (TI-RTOS Kernel) User's Guide</i> -- SPRUEX3
TI-RTOS Drivers & Board Support	Drivers and MSPWare	<i>TI-RTOS User's Guide</i> -- SPRUHD4
TI-RTOS Instrumentation	UIA	<i>System Analyzer User's Guide</i> -- SPRUH43
TI-RTOS File System	FatFS	<i>TI-RTOS User's Guide</i> -- SPRUHD4
TI-RTOS USB	USB stack	<i>TI-RTOS User's Guide</i> -- SPRUHD4

The components in the "products" subdirectory are:

- **TI-RTOS Kernel — SYS/BIOS.** SYS/BIOS is a scalable real-time kernel. It is designed to be used by applications that require real-time scheduling and synchronization or real-time instrumentation. It provides preemptive multi-threading, hardware abstraction, real-time analysis, and configuration tools. SYS/BIOS is designed to minimize memory and CPU requirements on the target.
- **TI-RTOS Drivers and Board Support.** TI-RTOS includes drivers for a number of peripherals. These drivers are thread-safe for use with the TI-RTOS Kernel. The drivers have a common framework, so using multiple drivers in your application is easy. Both instrumented and non-instrumented versions of the drivers are provided. Board support files to configure the drivers is provided for several targets.
- **TI-RTOS Instrumentation — UIA.** The Unified Instrumentation Architecture (UIA) provides target content that aids in the creation and gathering of instrumentation data (for example, Log data).
- **MSPWare.** This software is an extensive suite of drivers, code examples, and design resources designed to simplify and speed development of MSP43x microcontroller applications. This component is customized and built as a library to support MSP430F5xx_6xx devices and MSP432 devices with TI-RTOS.¹
- **XDCtools.** This core component provides the underlying tooling for configuring and building TI-RTOS and its components. XDCtools is installed as part of CCS v6.x. If you install TI-RTOS outside CCS, a compatible version of XDCtools is installed automatically. XDCtools is installed in a directory at the same level as TI-RTOS, not in the "products" directory of the TI-RTOS installation.

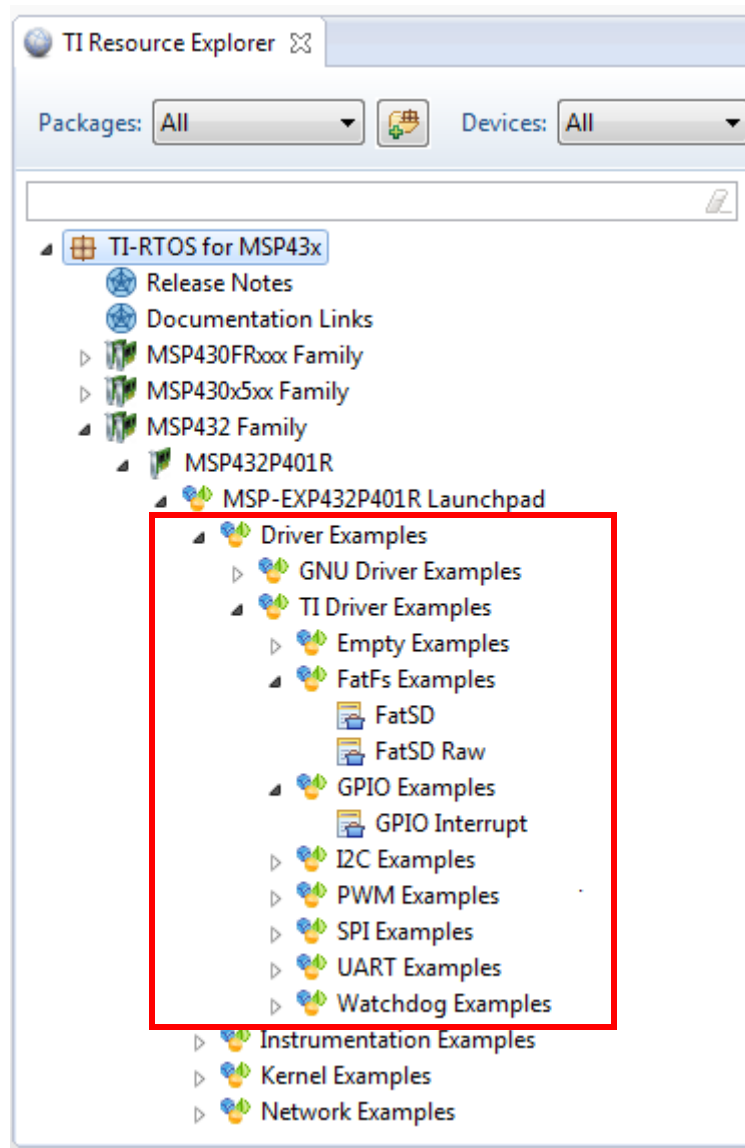
1. Customization details for MSPWare and instructions for building MSPWare's driverlib libraries for MSP430F5xx6xx families are provided in the TI-RTOS.README in the top-level directory of the MSPWare component.

1.3 How Can I Find Example Projects?

TI-RTOS and its components provide numerous examples that you can import using the **Resource Explorer** in Code Composer Studio (CCS). These examples use TI-RTOS and its components and have all the settings needed for your device. Expand the tree in the Resource Explorer to see the examples that are available for your device. Resource Explorer provides TI-RTOS examples for both the TI and GNU tool chains.

- **Driver Examples** are TI-RTOS driver examples.
- **Instrumentation Examples** are UIA examples.
- **Kernel Examples** are the SYS/BIOS examples.
- **Network Examples** show how to use capabilities such as WiFi, PPP, Ethernet, and HTTP/HTTPS.

Follow the steps in [Section 3.1](#) to import, build, and run these examples.



1.4 What Compilers and Targets are Supported?

The following code generation tool (compilers and linkers) used to build the TI-RTOS libraries and to perform testing. More recent versions are expected to be compatible.

- **Texas Instruments:** MSP430 CodeGen Tools 4.4.2 (for MSP430)
- **Texas Instruments:** ARM CodeGen Tools 5.2.4 (for MSP432)
- **IAR Workbench for MSP430:** 6.20 (for MSP430)
- **IAR Workbench for ARM:** 7.40.3 (for MSP432)

The configuration uses a "target" specification during the build. This specification is sometimes called the "RTSC target." The targets supported are:

- ti.targets.msp430.elf.MSP430X (for MSP430)
- iar.targets.msp430.MSP430X_small (for MSP430)
- ti.targets.arm.elf.M4F (for MSP432)

1.5 What Boards and Devices Have TI-RTOS Driver Examples?

Currently, TI-RTOS provides driver examples for the following boards:

Family	Device on Board	Board
MSP430F5xx	MSP430F5529	MSP-EXP430F5529LP LaunchPad
MSP430FR5xx	MSP430FR5969	MSP-EXP430FR5969LP LaunchPad
MSP430FR5xx	MSP430FR5994	MSP-EXP430FR5994LP LaunchPad
MSP430FR6xx	MSP430FR6989	MSP-EXP430FR6989LP LaunchPad
MSP432	MSP432P401R	MSP-EXP432P401RLP LaunchPad

Examples are provided specifically for the supported boards, but libraries are provided for each of these device families, so that you can port the examples to similar boards. Porting information for TI-RTOS is provided on the [Texas Instruments Wiki](#).

For MSP43x devices, TI-RTOS drivers are prebuilt only for MSP430F5529, MSP430FR5969, and MSP432P401R devices. TI-RTOS drivers for other MSP43x devices must be added into the TI-RTOS build system. See "Rebuilding MSPWare's driverlib for TI-RTOS and its Drivers" in the [TI-RTOS User's Guide](#) (SPRUHD4) for details.

1.6 What Drivers Does TI-RTOS Include?

TI-RTOS includes drivers for the following peripherals. These drivers are in the `<install_dir>/products/tidrivers_<version>/packages/ti/drivers` directory. TI-RTOS examples show how to use these drivers. Note that all of these drivers are built on top of MSPWare.

The TI-RTOS installation installed drivers for multiple device families. The following list indicates which drivers can be use with MSP43x targets:

- **GPIO.** API set intended to be used directly by the application or middleware to manage the GPIO interrupts, pins, and ports.
- **I²C.** API set intended to be used directly by the application or middleware.
- **Power.** Power management framework. See the *TI-RTOS Power Management User's Guide* (SPRU118).

- **PWM.** API set intended to be used directly by the application or middleware to generate Pulse Width Modulated signals.
- **SPI.** API set intended to be used directly by the application or middleware to communicate with the Serial Peripheral Interface (SPI) bus. SPI is sometimes called SSI (Synchronous Serial Interface).
- **SDSPI.** Driver for SD cards using a SPI (SSI) bus. This driver is used by the FatFS and not intended to be called directly by the application.
- **UART.** API set intended to be used directly by the application to communicate with the UART.
- **Other USB functionality.** See the USB examples for reference modules that provide support for the Human Interface Device (HID) class (mouse and keyboard) and Communications Device Class (CDC). This code is provided as part of the examples, not as a separate driver.
- **Watchdog.** API set intended to be used directly by the application or middleware to manage the watchdog timer.
- **WiFi.** Driver used by a Wi-Fi device's host driver to exchange commands, data, and events between the host MCU and the wireless network processor. Not intended to be called directly.

1.7 For More Information

To see release notes for a component, go to the subdirectory for that component within the TI-RTOS products directory. For example, `C:\ti\tirtos_msp43x_2_##_##_##\products\bios_6_40_##_##` contains release notes for SYS/BIOS.

To see user guide PDFs and other documentation for a component, go to the "docs" subdirectory within the directory that contains the release notes.

To learn more about TI-RTOS and its components, refer to the following documentation:

- **TI-RTOS**
 - [TI-RTOS User's Guide \(SPRUHD4\)](#)
 - In the TI-RTOS Release Notes, follow the **Documentation Overview** link. In the Documentation Overview page, choose the **TI-RTOS Drivers Runtime APIs (doxygen)** item.
 - [TI-RTOS on the Texas Instruments Wiki](#)
 - [TI-RTOS forum on TI's E2E Community](#)
 - [TI-RTOS Porting Guide](#)
 - [Embedded Software Download Page](#)
- **Code Composer Studio (CCS)**
 - CCS online help
 - [CCSv6 on the Texas Instruments Wiki](#)
 - [Code Composer forum on TI's E2E Community](#)
- **SYS/BIOS**
 - [SYS/BIOS User's Guide \(SPRUEX3\)](#)
 - SYS/BIOS API and configuration reference. In the TI-RTOS Release Notes, follow the **Documentation Overview** link. In the Documentation Overview page, choose the **TI-RTOS Kernel Runtime APIs and Configuration (cdoc)** item.
 - [SYS/BIOS on the Texas Instruments Wiki](#)
 - [TI-RTOS forum on TI's E2E Community](#)
 - [SYS/BIOS 6.x Product Folder](#)

- **XDCtools**
 - [SYS/BIOS User's Guide \(SPRUEX3\)](#)
 - XDCtools online reference. Open from CCS help or run `<xdc_install>/docs/xdctools.chm`.
 - [RTSC-Pedia Wiki](#)
 - [TI-RTOS forum on TI's E2E Community](#)
- **UIA**
 - [System Analyzer User's Guide \(SPRUH43\)](#)
 - UIA API and configuration reference. In the TI-RTOS Release Notes, follow the **Documentation Overview** link. In the Documentation Overview page, choose the **TI-RTOS Instrumentation Runtime APIs and Configuration (cdoc)** item.
 - [System Analyzer on the Texas Instruments Wiki](#)
- **MSPWare**
 - Documents in `<tirtos_install>/products/MSPWare_##/doc`
 - [MSPWare Product Folder](#)
- **FatFS API**
 - [Open source documentation](#)
 - [TI-RTOS User's Guide \(SPRUHD4\)](#)
- **General microcontroller information**
 - [Microcontrollers forum on TI's E2E Community](#)
- **MSP43x boards and devices**
 - [MSP-EXP430F5529LP LaunchPad Evaluation Kit](#)
 - [MSP430 USB Developers Package](#) (which includes the USB Descriptor Tool)
 - [MSP430F5529 Microcontroller](#)
 - [MSP430FR5969 LaunchPad Development Kit](#)
 - [MSP430FR5994 LaunchPad Development Kit](#)
 - [MSP430FR6989 Microcontroller](#)
 - [MSP430FR6989 LaunchPad Development Kit](#)
- **BoosterPacks**
 - [EM Adapter BoosterPack](#)
 - [RF430CL330H NFC Dynamic Tag Target Board](#)
 - [MicroSD BoosterPack](#)
 - [SD Card BoosterPack](#)
 - [TMP006 BoosterPack](#)
 - [I2C TPL0401EVM BoosterPack](#)
- **SD Cards**
 - [Specification](#)
- **I²C**
 - [Specification](#)
- **WiFi**
 - [SimpleLink Wi-Fi CC31xx/CC32xx Wiki Page](#)
 - [CC3100 Product Folder](#)
 - [CC3200 Product Folder](#)
 - [SimpleLink Wi-Fi SmartConfig Apps](#)

Installing TI-RTOS

This chapter covers the steps to install TI-RTOS within Code Composer Studio or as a standalone software product.

Topic	Page
2.1 System Requirements	10
2.2 Installing Code Composer Studio	11
2.3 Installing TI-RTOS in Code Composer Studio	11
2.4 Installing TI-RTOS for Use in IAR Embedded Workbench	12
2.5 Installing TI-RTOS as a Standalone Product	12

2.1 System Requirements

The Microsoft Windows version of TI-RTOS can be installed on systems running Windows 8, Windows 7, Windows Vista, or Windows XP (SP2 or SP3).

The Linux version of TI-RTOS can be installed on systems that are running Linux RedHat v4 and higher or Ubuntu v10.04 and higher.

Separate versions of TI-RTOS are available for various Texas Instruments device families.

In order to install TI-RTOS, you must have at least 1 GB of free disk space. (If you have not yet installed Code Composer Studio, you will also need at least 4 GB of disk space for that installation.)

2.2 Installing Code Composer Studio

TI-RTOS is used in conjunction with Code Composer Studio 6.1 or higher. (TI-RTOS can also be used with the IAR Embedded Workbench IDE. See [page 12](#) for more information.) CCS is available for Microsoft Windows and Linux.

For Windows installations, we recommend that you install CCS in the default installation directory of `c:\ti`. If you install in `c:\Program Files` (or `c:\Program Files (x86)` with Windows 7), you are likely to run into problems related to Windows security permissions.

Note: Do not install CCS in a location that contains any spaces in the full path. For example, CCS should not be installed in `c:\Program Files`. Makefiles may not function correctly with directory paths that include spaces.

To install CCS 6.x, go to the ["Download CCS" page on the Texas Instruments wiki](#) and follow a link to download the software for your license type. For multi-user licenses, see the [CCS product page](#).

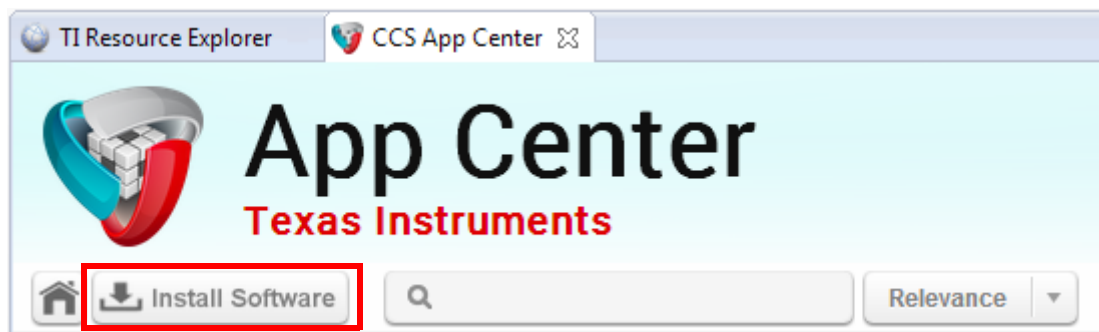
Run the installer, and answer the prompts as appropriate.

2.3 Installing TI-RTOS in Code Composer Studio

TI-RTOS is *not* installed automatically as part of the Code Composer Studio v6.x installation. Instead, you can install it through the CCS App Center as described in this section, for use in IAR Workbench as described in [Section 2.4](#), or as a standalone product as described in [Section 2.5](#).

Follow these steps to install TI-RTOS in CCS:

1. Run CCS v6.1 or higher.
2. Choose **View > CCS App Center** in CCS.
3. Select the version of TI-RTOS for your device family. If you use devices from multiple families, you can select multiple TI-RTOS versions.
4. Click the **Install Software** button near the top of the App Center view.



5. Answer the prompts as necessary to complete the TI-RTOS installation.
6. Restart CCS in order for TI-RTOS and its components to be available.

2.4 Installing TI-RTOS for Use in IAR Embedded Workbench

You can install TI-RTOS for use with IAR Embedded Workbench as follows:

1. Install IAR Embedded Workbench for Texas Instruments MSP430 devices. See [Section 1.4](#) for the supported versions of IAR Workbench.
2. [Download the Windows installer](#) for TI-RTOS for MSP43x. For example, `tirtos_setupwin32_msp43x_2_##_##_##.exe`.
3. Run the downloaded file to install the full TI-RTOS product. You can install TI-RTOS in a standalone directory. Installing in a directory path that contains spaces, such as `C:\Program Files (x86)`, is not supported.

Note: TI-RTOS installs the core functionality of the XDCtools component if you have not already installed the necessary version as part of a CCS installation. TI-RTOS places XDCtools in a separate directory at the same level where you install TI-RTOS. For example, if the TI-RTOS installation directory is `C:\ti\tirtos_msp43x_2_##_##_##`, the XDCtools directory will be `C:\ti\xdctools_3_31_##_##_core`.

Follow the instructions in [Section 3.1.2](#) to complete the installation of the TI-RTOS examples. See [Section 3.2](#) to build the examples with the IAR compiler and to load and run the examples with IAR Embedded Workbench.

2.5 Installing TI-RTOS as a Standalone Product

If you do not use Code Composer Studio, you can install TI-RTOS as a standalone product. In addition to compiling and linking with the Texas Instruments Code Generation Tools, TI-RTOS includes support for the IAR tool chain.

1. [Download the Windows or Linux installer](#) for TI-RTOS for the device family you use. For example, `tirtos_setupwin32_msp43x_2_##_##_##.exe` or `tirtos_setuplinux_msp43x_2_##_##_##.bin`.
2. Run the downloaded file to install TI-RTOS. You can install TI-RTOS in a standalone directory. Installing in a directory path that contains spaces, such as `C:\Program Files (x86)`, is not supported.

Note: TI-RTOS installs the core functionality of the XDCtools component if you have not already installed the necessary version as part of a CCS installation. TI-RTOS places XDCtools in a separate directory at the same level where you install TI-RTOS. For example, if the TI-RTOS installation directory is located in `C:\ti\tirtos_msp43x_2_##_##_##`, the XDCtools directory will be in `C:\ti\xdctools_3_31_##_##_core`.

Follow the instructions in [Section 3.1.2](#) to complete the installation of the TI-RTOS examples.

Examples for TI-RTOS

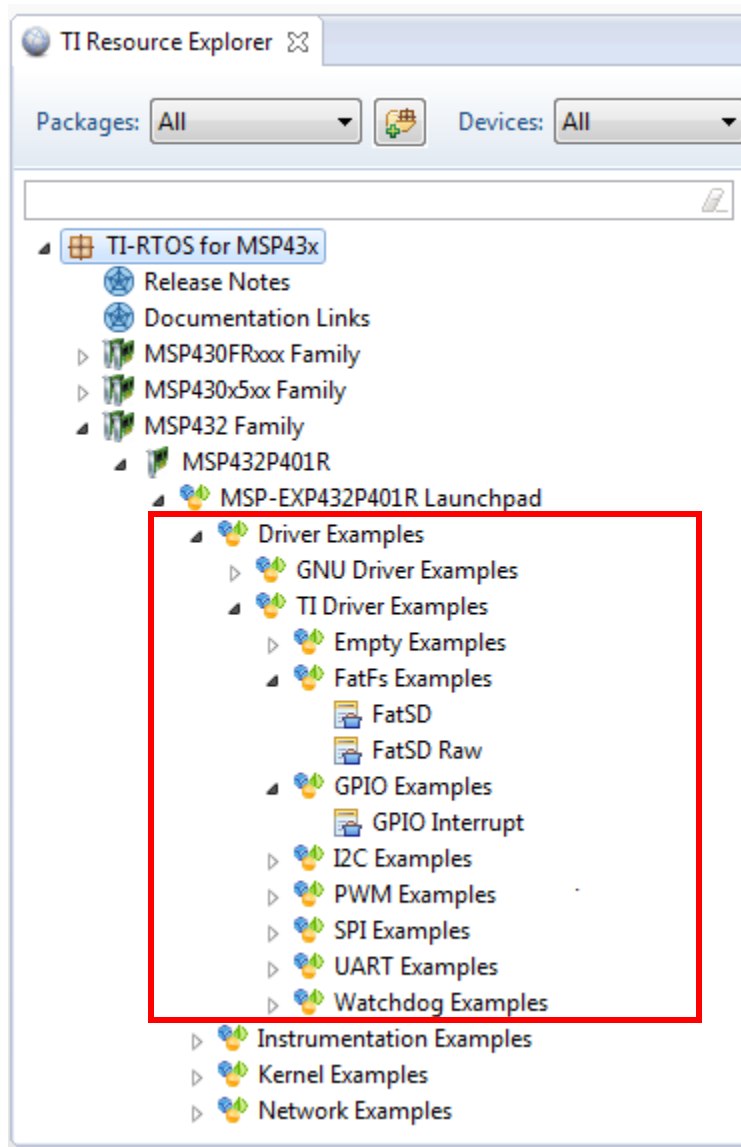
TI-RTOS comes with a number of examples that illustrate on how to use the individual components. This chapter explains how to create and use these examples.

Topic	Page
3.1 Creating Example Projects Using the Resource Explorer in CCS . .	14
3.2 Creating Examples with IAR Embedded Workbench.	18
3.3 Driver Examples: Readme Files and Common Features.	18
3.4 MSP430 MSP-EXP430F5529LP Settings and Resources.	19
3.5 MSP430 MSP-EXP430FR5969LP Settings and Resources	21
3.6 MSP430 MSP-EXP430FR5994LP Settings and Resources	23
3.7 MSP430 MSP-EXP430FR6989LP Settings and Resources	25
3.8 MSP432 MSP-EXP432P401RLP Settings and Resources	27
3.9 BoosterPacks	29
3.10 Installing USB Drivers for the USB Device Examples	33

3.1 Creating Example Projects Using the Resource Explorer in CCS



You can use the **Resource Explorer** in Code Composer Studio (CCS) to create example projects that use TI-RTOS and its components and have all the settings needed for your device. Follow these steps:

1. Open CCS. If you do not see the Resource Explorer, make sure you are in the **CCS Edit** perspective and choose **View > Resource Explorer (Examples)** from the menus.
2. Type the name or part of the name of your device in the **enter search keyword** field to hide all the examples that don't apply to your device. Or, type "Driver Examples" to find driver examples.
3. Expand the tree until you see the examples for your device. Any **Driver Examples** listed are TI-RTOS driver examples. Any **Instrumentation Examples** listed are UIA examples. The **Kernel Examples** are the TI-RTOS Kernel (SYS/BIOS) examples. **Network Examples** use capabilities such as WiFi, PPP, Ethernet, and HTTP/HTTPS.



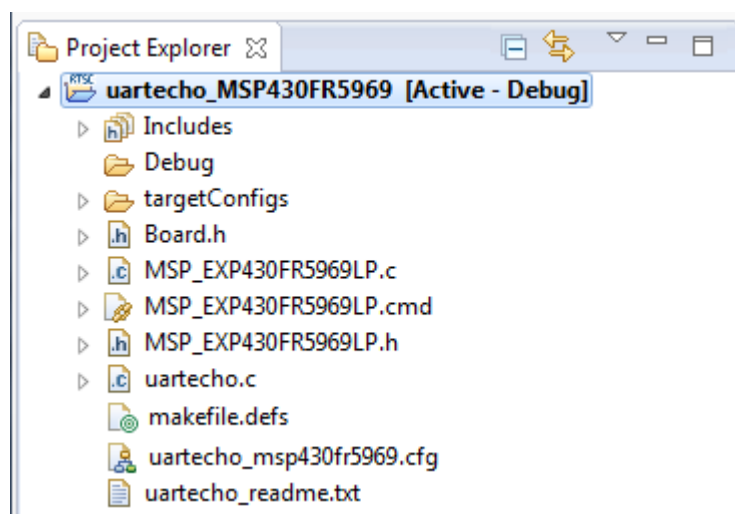
4. Select the example you want to create. A description of the selected example is shown to the right of the example list.

- Click the **Step 1** link in the right pane of the Resource Explorer to **Import the example project into CCS**. This adds a new project to your Project Explorer view. Once you have completed a step for a particular example and device, a green checkmark will be shown next to that step.



Step 1:  [Import the example project into CCS](#) 

*Click on the link above to import the project. The imported project is available in the **Project Explorer** view, expand the project node to browse the imported source files. To modify source code, double clicks on the source file within the project to open the source file editor.*

- The project created will have a name with the format `<example_name>_<board>`. You can expand the project to see the source code, configuration, and other files in the project.





- The page shown when you select an example in the Resource Explorer provides additional links to perform common actions with that example. Use the **Step 2** link when you are ready to build the project. If you want to change any build options, right click on the project and select **Properties** from the context menu. For example, you can change compiler, linker, and RTSC (XDCtools) options.

Step 2:  [Build the imported project](#) 

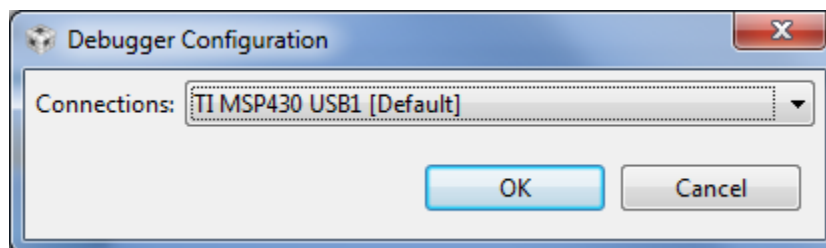
*To change build options, right click on the project and select **Properties** from the context menu. To build the project, select the link above, or select the **Build** toolbar button, or select the **Project | Build Project** menu item.*

- Use the **Step 3** link to change the connection used to communicate with the board. The current setting is shown in the Resource Explorer page for the selected example. (If you want to use a simulator instead of a hardware connection, double-click the *.ccxml file in the targetConfigs folder of the project to open the Target Configuration File editor. Change the **Connection** as needed, and click **Save**.)



Step 3:  [Debugger Configuration](#) 

*Connection: [Spectrum Digital XDSPRO USB Emulator](#)
Click on the link above to change the device connection. Additionally, this option is also available in the project properties.*

- You will see the Debugger Configuration dialog. Choose an emulator. For MSP430 devices, choose the **TI MSP430 USB1**, and for MSP432 devices, choose the **TI XDS 110 USB Emulator**.



- Use the **Step 4** link to launch a debug session for the project and switch to the **CCS Debug Perspective**.

Step 4:  [Debug the imported project](#) 

*Click on the link above to launch a debug session for the **UART Echo** project and switch to the **CCS Debug Perspective**. Additionally, these are other methods to start a project debug session. Select the project in the **Project Explorer** view and click on the bug toolbar button. To relaunch a previous debug session, click on the small arrow beside the bug toolbar button and select one of the debug session from the history.*

3.1.1 Creating an Empty TI-RTOS Project

TI-RTOS provides blank projects you can use as a starting point for creating your own projects that utilize TI-RTOS. Both "Empty" and "Empty (Minimal)" versions are provided. The "Empty" version enables more kernel features and debug capabilities at the cost of large footprint. The "Empty (Minimal)" version disables various kernel features and debug capabilities to minimize the footprint. See the "Memory Usage with TI-RTOS" chapter in the [TI-RTOS User's Guide](#) (SPRUHD4) for details about techniques used to minimize the footprint.

Empty TI-RTOS driver projects can be created with the Resource Explorer (see [Section 3.1](#)).

After you create the example, the files in the empty project example include:

- Key C files: empty.c, <board>.c/.h
- Key configuration files: empty.cfg
- Linker command file: <board>.cmd

Add to the example as needed to implement your application.

3.1.2 Creating Examples to Build via a Command Line

TI-RTOS has a command-line utility called `examplesgen` that generates example projects along with the makefiles needed to build the examples for all supported tool chains—TI and IAR. The files are created in a location you specify on the command line. The `tirtos.mak` file in the top level directory of your TI-RTOS installation can be used to run `examplesgen`.

Note: If you installed TI-RTOS using the standalone installer ([Section 2.5](#) or [Section 2.4](#)), this step is not necessary because pre-generated examples are included as part of the installation for all supported boards and tool chains. The provided examples are located in the `TIRTOS_INSTALL_DIR\examples` directory. Pre-generated examples are not provided if you installed TI-RTOS through the CCS App Center.

You only need to perform these steps once:

- If you installed TI-RTOS in a location other than the default location of `C:\ti`, edit the `tirtos.mak` file in the TI-RTOS installation directory. Modify the following variables as needed to make them point to the correct locations.
 - `DEFAULT_INSTALL_DIR`: Full path to the location where TI tools are installed.
 - `IAR_COMPILER_INSTALL_DIR`: Full path to the IAR code generation tools installation.
 - `GCC_INSTALLATION_DIR`: Full path to the GCC code generation tools installation. (GCC is not supported for this device family.)
 - `TIRTOS_INSTALL_DIR`: Full path to the TI-RTOS installation.
 - `XDCTOOLS_INSTALL_DIR`: Full path to the XDCtools installation.
- If you plan to use TI-RTOS with IAR, set the `IAR_BUILD` variable in the `tirtos.mak` file to `true`.

```
IAR_BUILD ?= true
```

- Open a command line window, and use the following commands to run the `examplesgen` utility. (If you installed TI-RTOS in a protected directory, you should run the command window as the administrator.)

```
> cd <tirtos_install>
> ..\xdctools_3_31_##_##_core\gmake -f tirtos.mak examplesgen DEST="YOURPATH"
```

For the destination path, use a UNIX-style path. That is, use forward slashes (/) instead of backslashes (\). For example, `DEST="C:/myfiles"`.

The output from this command is an `examples` directory tree containing folders for the supported boards. Each board folder contains folders for all the examples available for that board.

Examples for TI and IAR are generated for boards supported by TI-RTOS. Each board directory contains a `makedefs` file that can be modified to specify other installation paths or compiler/linker options and a `makefile` that can be used to build all the examples for that board. Each example directory has its own `makefile` that can be used to build that example specifically.

3.2 Creating Examples with IAR Embedded Workbench

For information about using TI-RTOS examples with IAR Embedded Workbench, see the wiki page on [Creating TI-RTOS Applications in IAR Embedded Workbench](#) on the Texas Instruments wiki.

3.3 Driver Examples: Readme Files and Common Features

Details about the driver examples are provided in the readme files in the example projects. There is a separate `<example_name>_readme` file for each of the examples. These files are added to your CCS project when you use the Resource Explorer to create a project. You can open the `<example_name>_readme` file within CCS. The `<example_name>_readme` files contain the following types of information:

- Actions performed by functions in the example.
- Hardware-specific descriptions of buttons, LEDs, etc...
- Which external components are (or may be) needed to run with particular examples.

There are several TI-RTOS example categories. The Empty and Empty (Minimal) projects are configured to make TI-RTOS available but do not contain specific code that uses TI-RTOS. The Demo examples use several peripherals working together. The remaining examples show how to use a specific peripheral.

The Driver Examples share the following features:

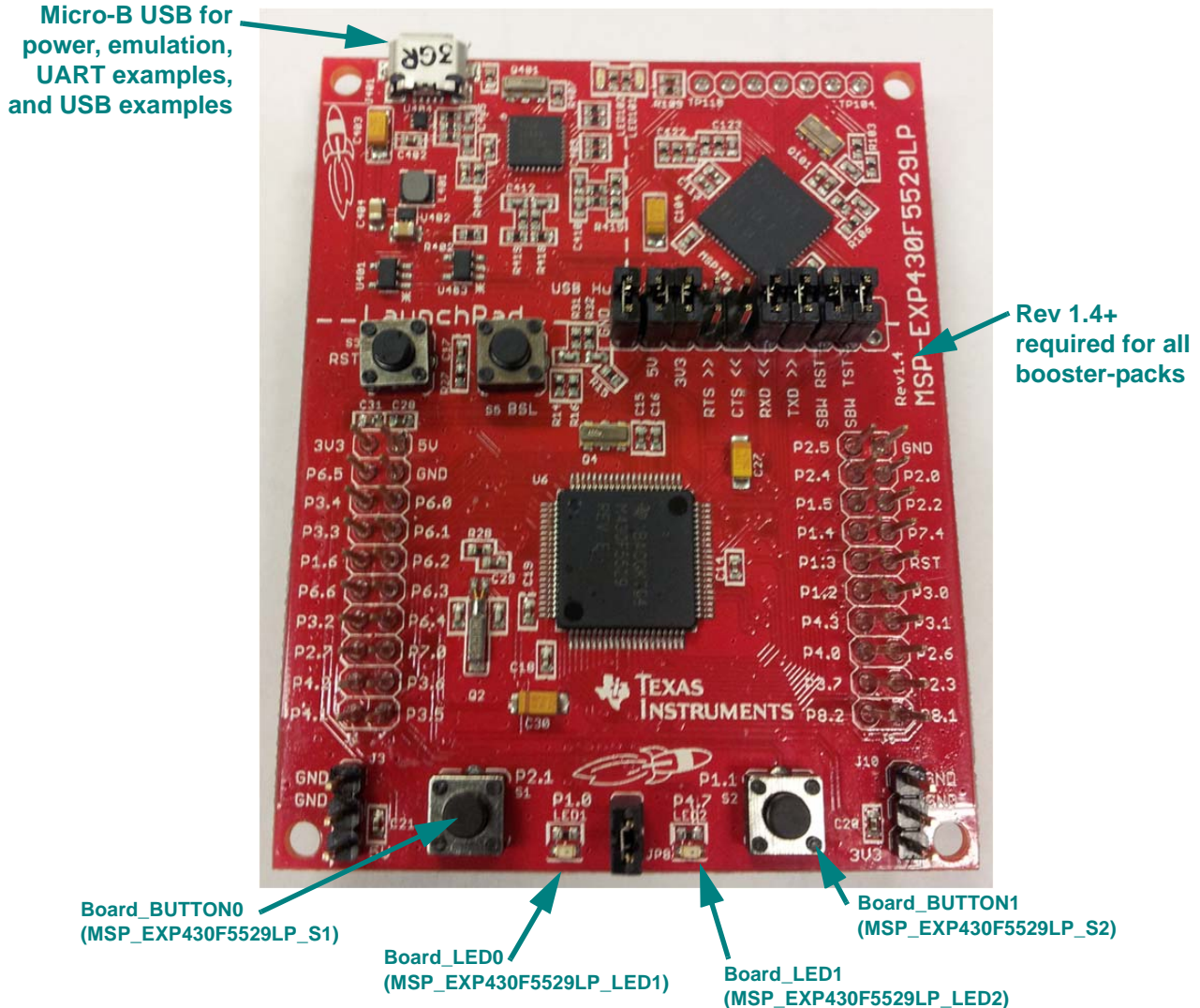
- Most TI-RTOS driver examples use the SysMin System Support module. See the readme files in the individual example projects for details.
- The empty, demo, and most UART examples use the `ti.uia.sysbios.LoggingSetup` module with stop mode data collection. The UART Console example uses run-time data collection during Idle thread processing. For more details on data collection, see Chapter 2 of the [TI-RTOS User's Guide](#) (SPRUHD4).
- Driver Examples for a particular target all have the same `<board>.c` and `<board>.h` files. These files perform board-specific configuration of the drivers provided by TI-RTOS. For more details, see Chapter 4 of the [TI-RTOS User's Guide](#) (SPRUHD4).

The sections that follow list settings required to run the TI-RTOS examples on the supported boards. They also list the hardware resources that TI-RTOS and its dependent components use by default. Some of these resources offer flexible options, whereas others are fixed in the current design or implementation.

3.4 MSP430 MSP-EXP430F5529LP Settings and Resources

The MSP-EXP430F5529LP board contains an MSP430 MSP430F5529 device.

MSP-EXP430F5529LP connections:



Jumper Settings:

- Set RXD << and TXD >> to provide UART communications via the onboard USB debugger.

If you use a BoosterPack with this board ([Section 3.9](#)), the BoosterPack fits over J1 and J5.

SPI Loopback example pin connections:

The SPI loopback example is not supported on MSP430F5529.

Resources Used:

The following list shows which MSP_EXP430F5529LP resources are used by TI-RTOS applications on that platform. TI-RTOS examples control which peripherals (and which ports) are used.

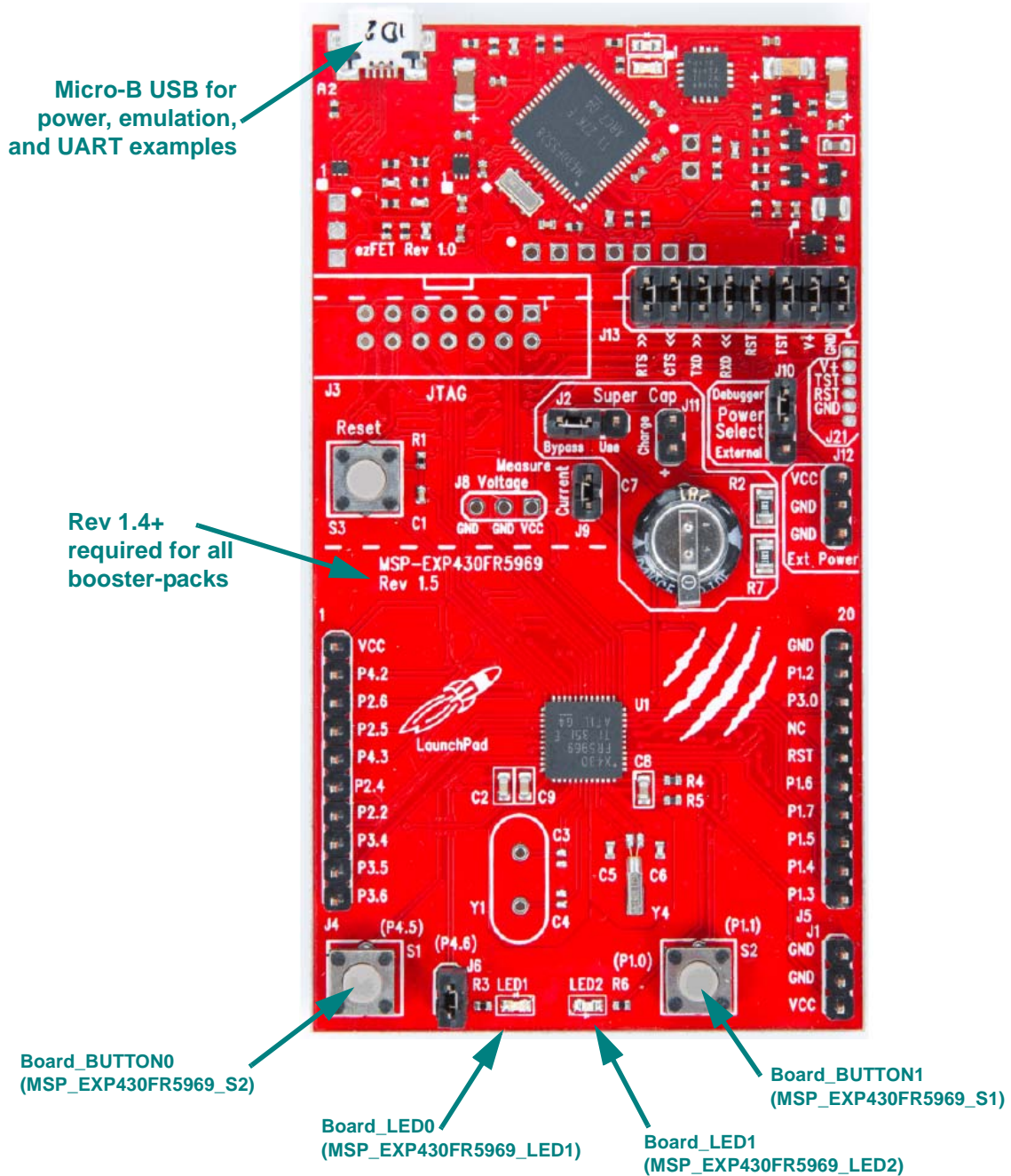
- **TI-RTOS Kernel (SYS/BIOS).** Uses the first general-purpose timer available and that timer's associated interrupts. Generally, this will be Timer0_A0. The TI-RTOS Kernel manages the interrupt controller statically without an interrupt dispatcher.
- **TI-RTOS.**
 - **SD Card.** Uses FatFs and the SDSPI driver on USCI_B0 without interrupts to read and write to files.
 - **I²C.** The I²C driver is configured on USCI_B0 to support various BoosterPacks.
 - **GPIOs.** The GPIO driver is used on 2 onboard LEDs: LED1 (P1.0) and LED2 (P4.7) as output pins and 2 switches S1 P2.1 and S2 P1.1 as inputs.
 - **Serial.** The UART driver uses USCI_A1, which is attached to the onboard EZ-FET MSP430 USB chip to facilitate serial communications.
 - **SPI.** The SPI driver is configured to use USCI_B1 and USCI_B0 for SPI communications. Each instance requires 2 DMA channels; therefore, only one SPI instance can be used at a time.
 - **USB.** The USB reference examples use the USB library and the USB controller with its associated interrupts.
 - **Watchdog.** The Watchdog driver example uses Watchdog Timer A.
 - **WiFi.** The WiFi examples for use with the CC3100 use GPIO pins P2.0, P2.2, and P6.5 as well as the GPIO interrupt for port 2. In addition, it uses P3.0 and P3.2 for SPI communications.

For MSP430, USB drivers are stored in the USB_config folder in TI-RTOS USB examples in CCS. The USB reference modules for MSP430 use a set of descriptor files that were generated with the MSP430 USB Descriptor Tool.

3.5 MSP430 MSP-EXP430FR5969LP Settings and Resources

The MSP-EXP430FR5969LP board contains an MSP430FR5969 device. This device has an FRAM memory unit.

MSP-EXP430FR5969LP connections:



Jumper Settings:

- Set **RXD <<** and **TXD >>** to provide UART communications via the onboard USB debugger.

If you use a BoosterPack with this board ([Section 3.9](#)), the BoosterPack fits over J4 and J5.

SPI Loopback example pin connections:

The SPI loopback example is not supported on the MSP_EXP430FR5969LP.

Resources Used:

The following list shows which MSP_EXP430FR5969LP resources are used by TI-RTOS applications on that platform. TI-RTOS examples control which peripherals (and which ports) are used.

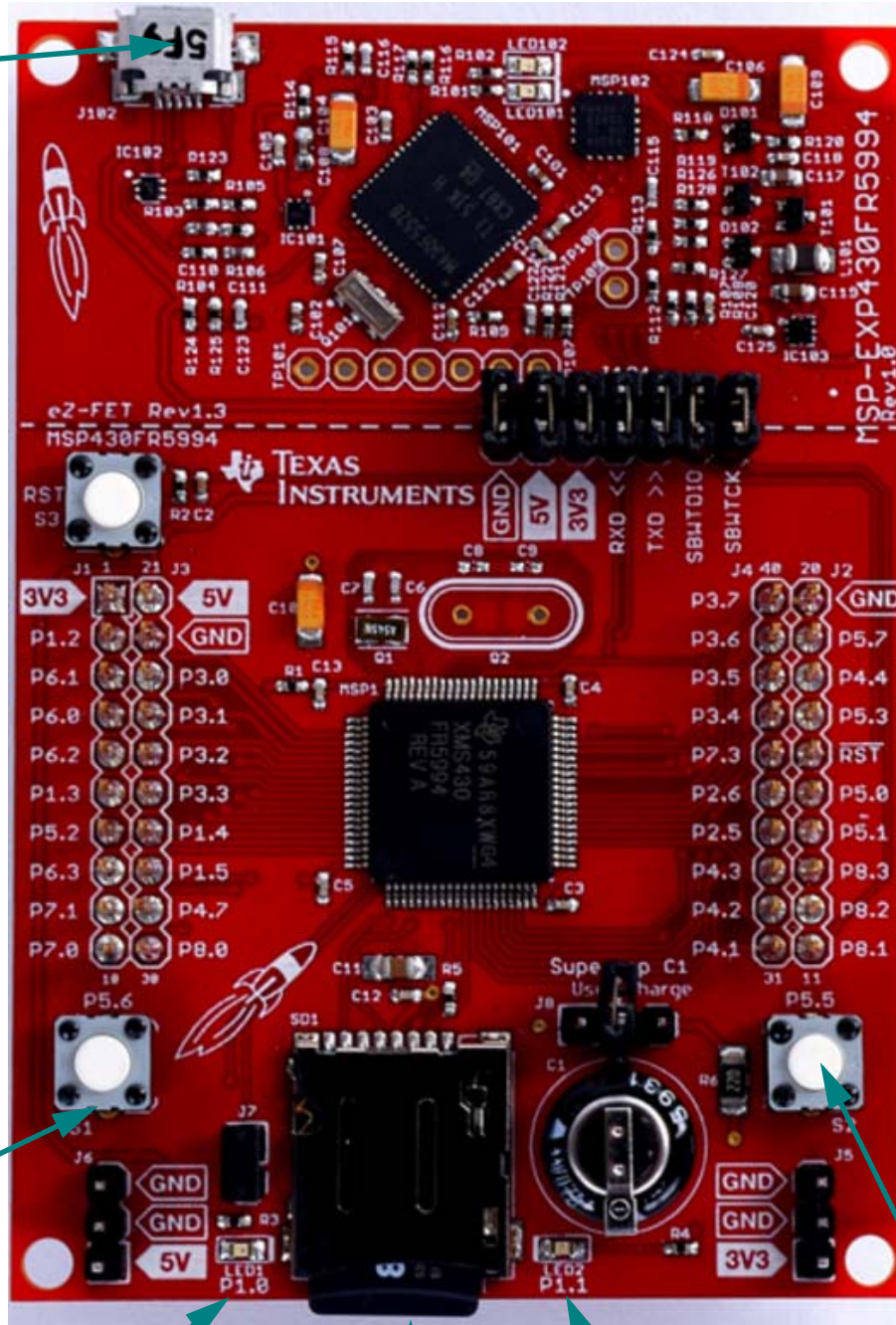
- **TI-RTOS Kernel (SYS/BIOS).** Uses the first general-purpose timer available and that timer's associated interrupts. Generally, this will be Timer0_A3. The TI-RTOS Kernel manages the interrupt controller statically without an interrupt dispatcher.
- **TI-RTOS.**
 - **SD Card.** Uses FatFs and the SDSPI driver on EUSCI_B0 without interrupts to read and write to files.
 - **I²C.** The I²C driver is configured on EUSCI_B0 to support various BoosterPacks.
 - **GPIOs.** The GPIO driver is used on 2 onboard LEDs: LED1 (P4.6) and LED2 (P1.0) as output pins and 2 switches S1 P4.5 and S2 P1.1 as inputs.
 - **Serial.** The UART driver uses EUSCI_A0, which is attached to the onboard EZ-FET MSP430 USB chip to facilitate serial communications.
 - **SPI.** The SPI driver is configured to use EUSCI_B0 for SPI communications. This instance requires 2 DMA channels for the SPI transfer, one for transfer and one for receive.
 - **Watchdog.** The Watchdog driver example uses Watchdog Timer A.
 - **WiFi.** The WiFi examples for use with the CC3100 use GPIO pins P1.2, P3.0, and P4.2 as well as the GPIO interrupt for port 1. In addition, it uses the EUSCI_B0 pins for SPI communications.

3.6 MSP430 MSP-EXP430FR5994LP Settings and Resources

The MSP-EXP430FR5994LP board contains an MSP430FR5994 device. This device has an FRAM memory unit.

MSP-EXP430FR5994LP connections:

Micro-B USB for power, emulation, and UART examples



Board_BUTTON0 (MSP_EXP430FR5994_S1)

Board_LED0 (MSP_EXP430FR5994_LED1)

microSD card slot

Board_LED1 (MSP_EXP430FR5994_LED2)

Board_BUTTON1 (MSP_EXP430FR5994_S2)

Jumper Settings:

- Set **RXD <<** and **TXD >>** to provide UART communications via the onboard USB debugger.

If you use a BoosterPack with this board (Section 3.9), the BoosterPack fits over J1 through J4.

SPI Loopback example pin connections:

The SPI loopback example is not supported on the MSP_EXP430FR5994LP.

Resources Used:

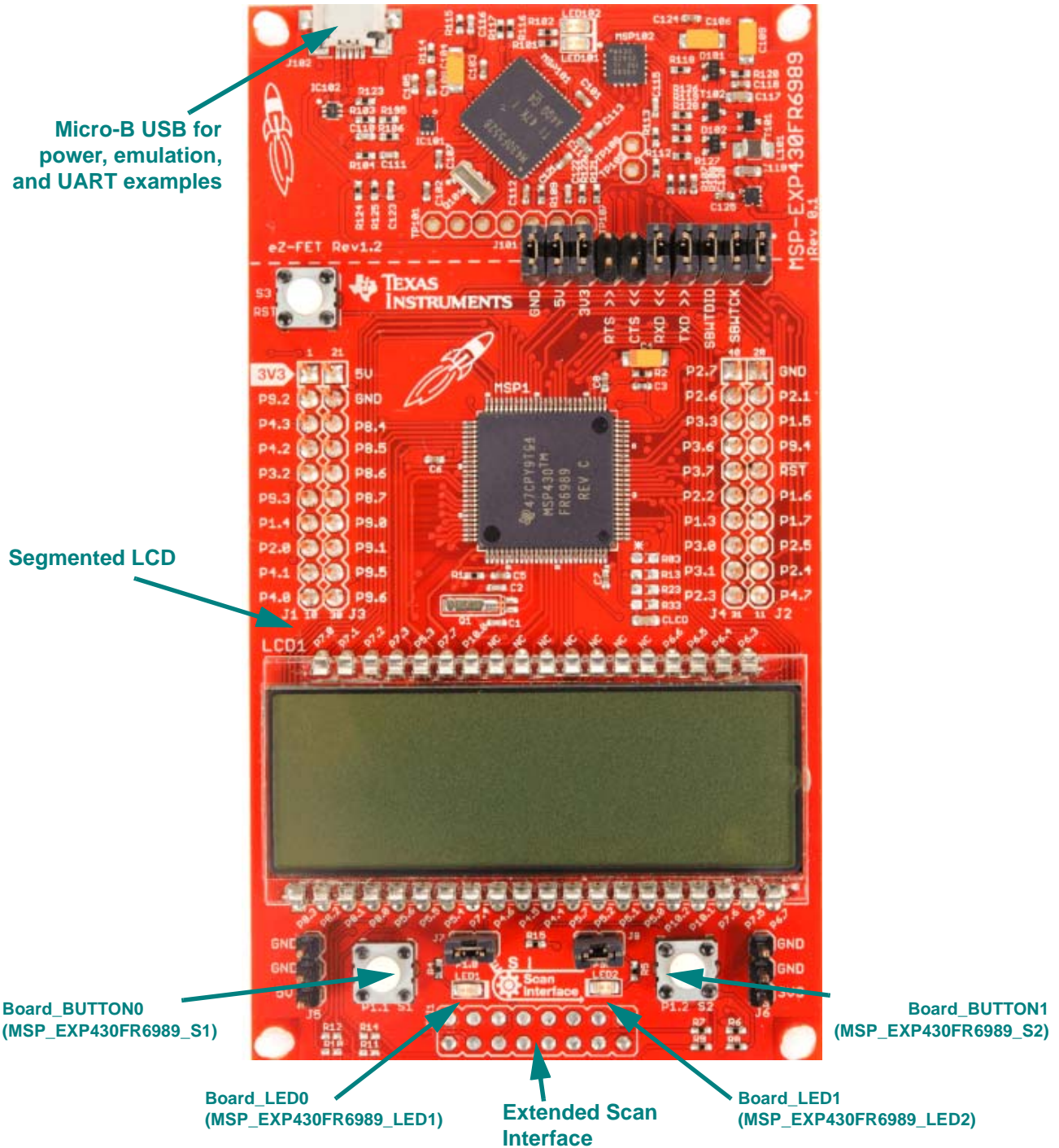
The following list shows which MSP_EXP430FR5994LP resources are used by TI-RTOS applications on that platform. TI-RTOS examples control which peripherals (and which ports) are used.

- **TI-RTOS Kernel (SYS/BIOS).** Uses the first general-purpose timer available and that timer's associated interrupts. Generally, this will be Timer0_A0. The TI-RTOS Kernel manages the interrupt controller statically without an interrupt dispatcher.
- **TI-RTOS.**
 - **SD Card.** Uses FatFs and the SDSPI driver on EUSCI_B0 without interrupts to read and write to files.
 - **I²C.** The I²C driver is configured on EUSCI_B0 to support various BoosterPacks.
 - **GPIOs.** The GPIO driver is used on 2 onboard LEDs: LED1 (P1.0) and LED2 (P1.1) as output pins and 2 switches S1 P5.6 and S2 P5.5 as inputs.
 - **Serial.** The UART driver uses EUSCI_A0, which is attached to the onboard EZ-FET MSP430 USB chip to facilitate serial communications.
 - **SPI.** The SPI driver is configured to use EUSCI_A3 for SPI communications. This instance requires 2 DMA channels for the SPI transfer, one for transfer and one for receive.
 - **Watchdog.** The Watchdog driver example uses Watchdog Timer A.
 - **WiFi.** Examples are not supported on this device.

3.7 MSP430 MSP-EXP430FR6989LP Settings and Resources

The MSP-EXP430FR6989LP board contains an MSP430FR6989 device. This device has an FRAM memory unit.

MSP-EXP430FR6989LP connections:



Jumper Settings:

- Set **RXD <<** and **TXD >>** to provide UART communications via the onboard USB debugger.

If you use a BoosterPack with this board ([Section 3.9](#)), the BoosterPack fits over J1 through J4.

SPI Loopback example pin connections:

The SPI loopback example is not supported on the MSP_EXP430FR6989LP.

Resources Used:

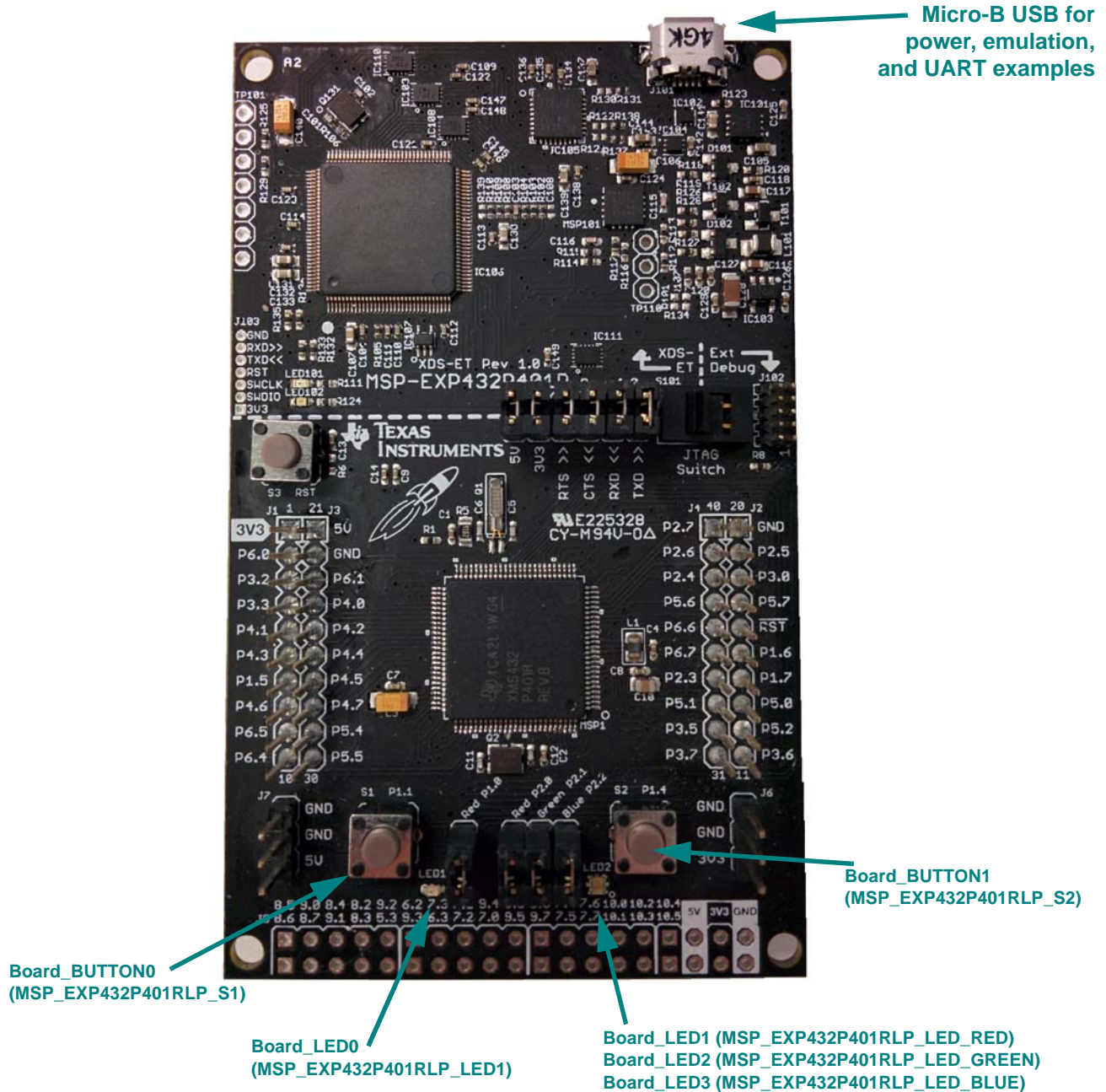
The following list shows which MSP_EXP430FR6989LP resources are used by TI-RTOS applications on that platform. TI-RTOS examples control which peripherals (and which ports) are used.

- **TI-RTOS Kernel (SYS/BIOS).** Uses the first general-purpose timer available and that timer's associated interrupts. Generally, this will be Timer0_A0. The TI-RTOS Kernel manages the interrupt controller statically without an interrupt dispatcher.
- **TI-RTOS.**
 - **SD Card.** Uses FatFs and the SDSPI driver on EUSCI_B0 without interrupts to read and write to files.
 - **I²C.** The I²C driver is configured on EUSCI_B0 to support various BoosterPacks.
 - **GPIOs.** The GPIO driver is used on 2 onboard LEDs: LED1 (P1.0) and LED2 (P9.7) as output pins and 2 switches S1 P1.1 and S2 P1.2 as inputs.
 - **Serial.** The UART driver uses EUSCI_A1, which is attached to the onboard EZ-FET MSP430 USB chip to facilitate serial communications.
 - **SPI.** The SPI driver is configured to use EUSCI_B0 for SPI communications. This instance requires 2 DMA channels for the SPI transfer, one for transfer and one for receive.
 - **Watchdog.** The Watchdog driver example uses Watchdog Timer A.
 - **WiFi.** The WiFi examples for use with the CC3100 use GPIO pins P1.5, P3.2, and P2.1 as well as the GPIO interrupt for port 2. In addition, it uses the EUSCI_B0 pins for SPI communications.

3.8 MSP432P401RLP Settings and Resources

The MSP-EXP432P401RLP board contains an MSP432P401R device.

MSP-EXP432P401RLP connections:



Jumper Settings:

- Set **RXD <<** and **TXD >>** to provide UART communications via the onboard USB debugger.
- If you use a BoosterPack with this board ([Section 3.9](#)), the BoosterPack fits over J1 and J5.

SPI Loopback example pin connections:

When wiring for SPI loopback, pins on a single board are wired to other pins on the same board.

Master Pin (Function)	Slave Pin (Function)
P1.5 (EUSCI_B0_CLK) —————▶	P3.5 (EUSCI_B1_CLK)
P1.6 (EUSCI_B0_SIMO) —————▶	P3.6 (EUSCI_B1_SIMO)
P1.7 (EUSCI_B0_SOMI) —————▶	P3.7 (EUSCI_B1_SOMI)

Resources Used:

The following list shows which MSP_EXP432P401RLP resources are used by TI-RTOS applications. TI-RTOS examples control which peripherals (and which ports) are used.

- **TI-RTOS Kernel (SYS/BIOS).** Uses the first general-purpose timer available and that timer's associated interrupts. Generally, this will be Timer0_A0. The TI-RTOS Kernel manages the interrupt controller statically without an interrupt dispatcher.
- **TI-RTOS.**
 - **GPIO.** The GPIO driver is used on 2 onboard LEDs: LED1 (P1.0) and LED2 (P2.0) as output pins and 2 switches S1 (P1.1) and S2 (P1.4) as inputs.
 - **I²C.** The I²C driver is configured on EUSCI_B0 to support various BoosterPacks.
 - **PWM.** The PWM driver uses the onboard RGB LED (G:P2.1 and B:P2.2). These pins are configured for the PWM driver. While these pins can also be used by the GPIO driver, your application's board file must ensure that the pins are not simultaneously used by the GPIO and PWM drivers.
 - **SD Card.** Uses FatFs and the SDSPI driver on EUSCI_B0 without interrupts to read and write to files.
 - **SPI.** The SPI driver is configured to use EUSCI_B0 and EUSCI_B1 for SPI communications.
 - **Serial.** The UART driver uses EUSCI_A0, which is attached to the onboard emulator to facilitate serial communications.
 - **Watchdog.** The Watchdog driver example uses the Watchdog Timer A peripheral.
 - **WiFi.** The WiFi examples for the CC3100 use the following GPIO pins: P4.1 (enable), P3.0 (chip select), and P2.5 as the CC3100 interrupt pin (interrupt is created for the port). The driver also uses an SPI driver instance (EUSCI_B0) and associated DMA channels.

3.9 BoosterPacks

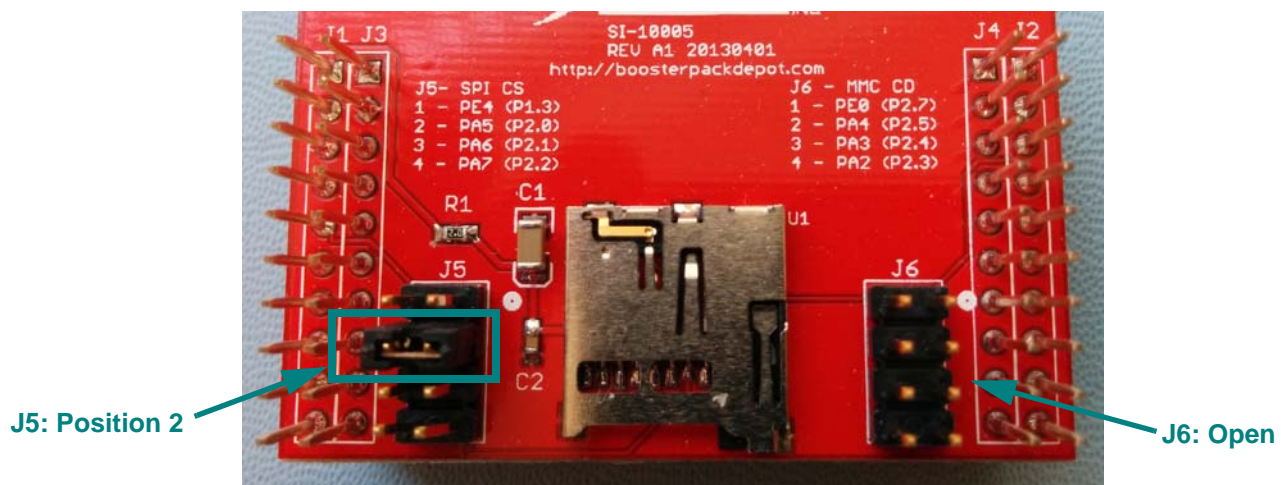
Several BoosterPack boards are used with the TI-RTOS examples. This section describes those boards and provides any special notes about installing the board.

3.9.1 SD Card BoosterPack

A [microSD BoosterPack](#) or [SD Card BoosterPack](#) should be used with examples that require an SD Card reader on target boards that do not include an SD Card reader. This board may be used with the MSP-EXP430F5529LP, MSP-EXP430FR5969LP, MSP-EXP430FR6989LP, and MSP-EXP432P401RLP.

The MSP-EXP430FR5994LP is not used with the SD Card BoosterPack, because the MSP-EXP430FR5994LP uses its on board microSD card slot.

The figure below shows the jumper needed on the microSD BoosterPack to make it pin-compatible with the SD Card BoosterPack.



3.9.2 TMP006 BoosterPack

The I²C TMP006 example uses the TMP006 BoosterPack to connect the TMP006EVM circuit board to the LaunchPad. The [TMP006 BoosterPack](#) kit, which includes a TMP006EVM circuit board, is available online. This board may be used with the MSP-EXP430F5529LP, MSP-EXP430FR5969LP, MSP-EXP430FR5994LP, MSP-EXP430FR6989LP, and MSP-EXP432P401RLP.

3.9.3 Sharp Memory LCD BoosterPack

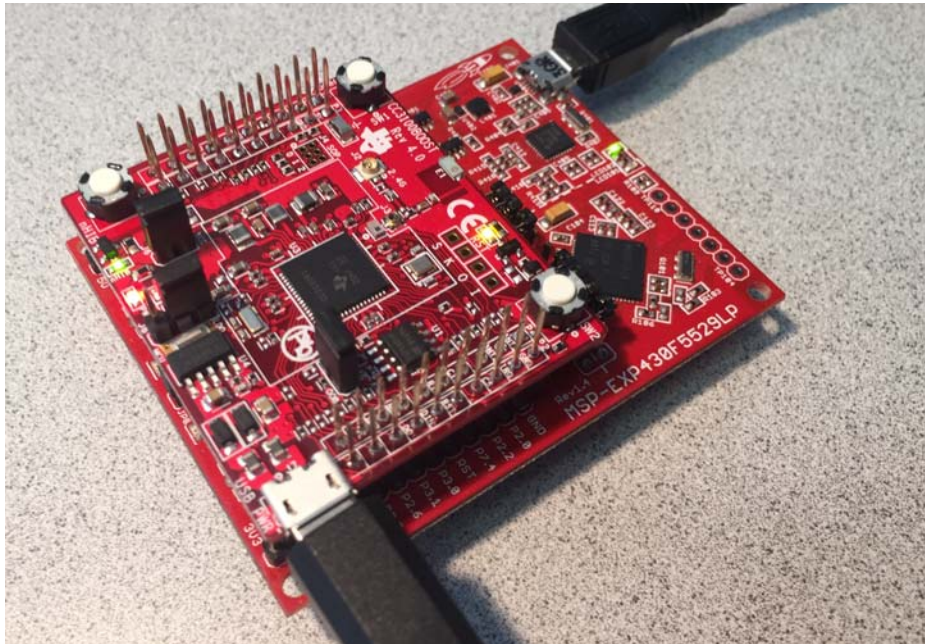
The LCD BoosterPack has a 96 x 96 pixel display that should be used with the graphics library demo example on the MSP-EXP430FR5969LP. This board may also be used with the MSP-EXP430F5529LP and MSP-EXP432P401RLP for applications you create. It is available on the TI eStore.

3.9.4 CC3100 BoosterPacks

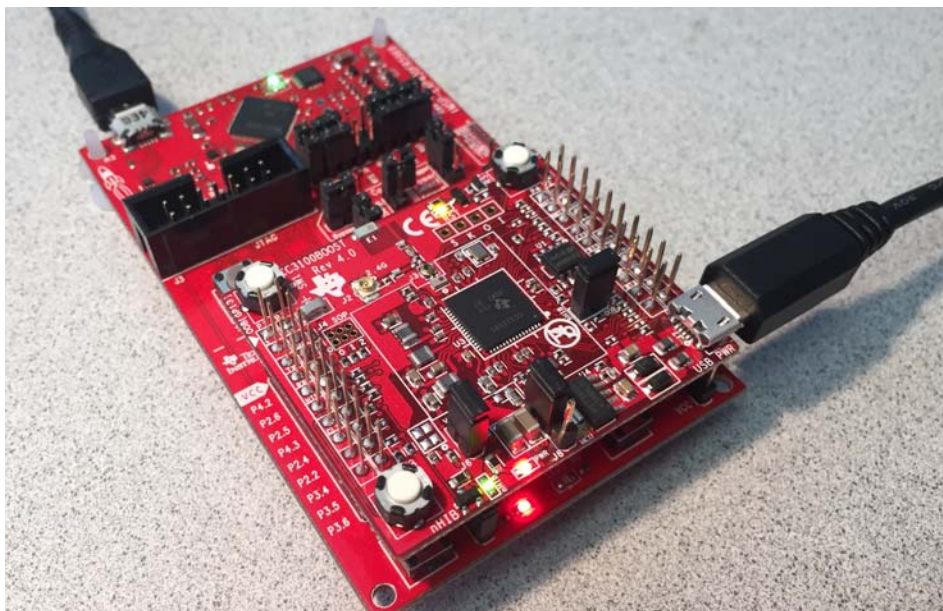
The TI CC3100 is a self-contained wireless network processor that simplifies the implementation of Internet connectivity. TI's SimpleLink Wi-Fi solution minimizes the software requirements of the host microcontroller (MCU) and is thus the ideal solution for embedded applications using any low-cost and low-power MCU.

The CC3100 BoosterPack is available to be used with the following boards (pictures are provided to show the correct way to mount the booster pack onto each board):

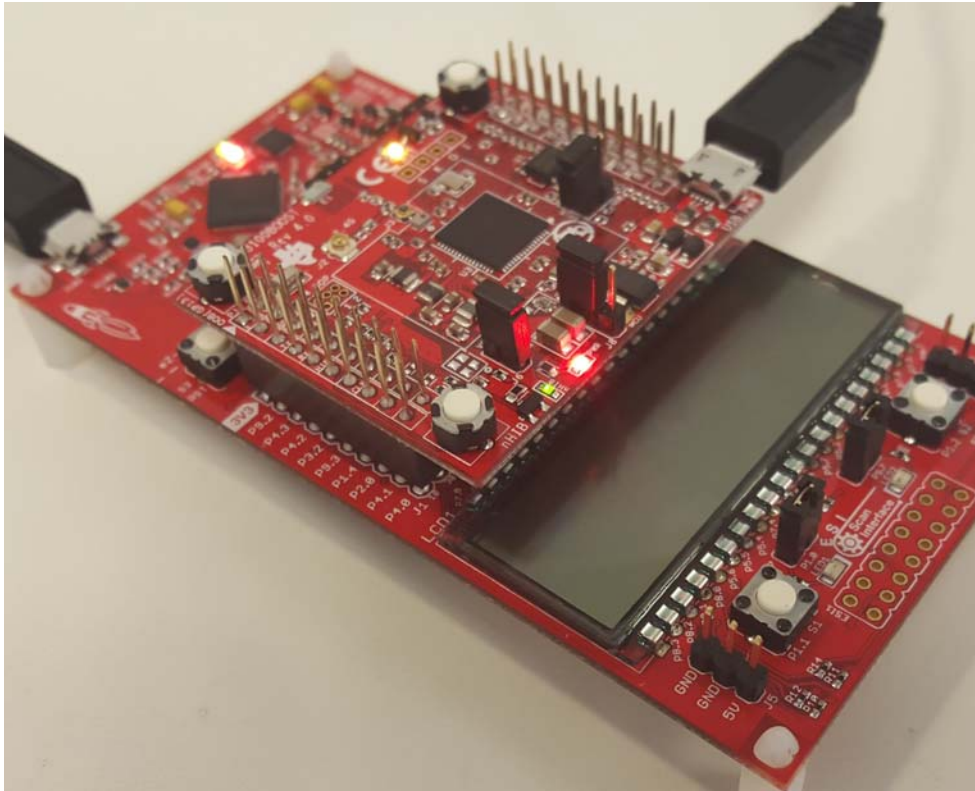
- MSP-EXP430F5529LP



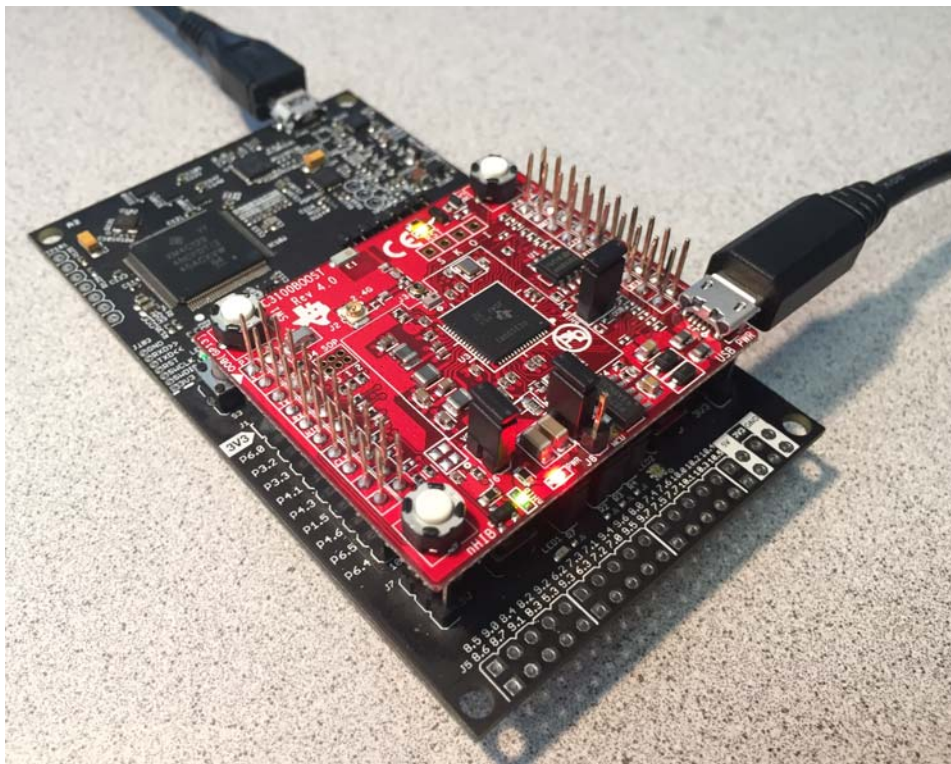
- MSP-EXP430FR5969LP



- MSP-EXP430FR6989LP



- MSP-EXP432P401R



3.10 Installing USB Drivers for the USB Device Examples

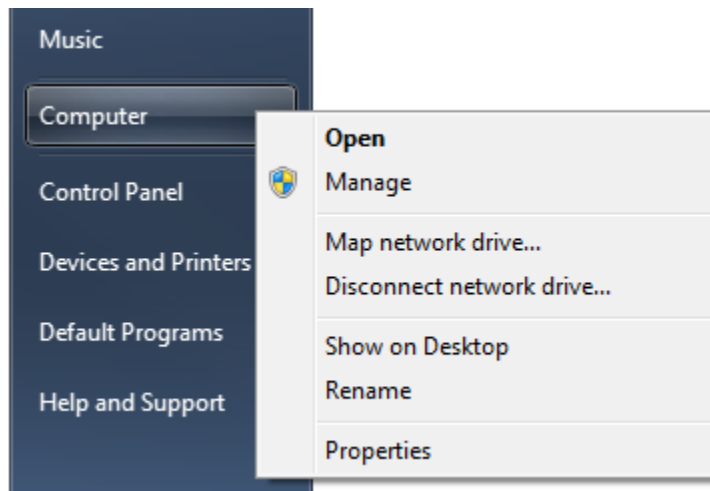
The USB examples build upon the examples provided with MSPWare. Because the examples mimic the same functionality, you can use the same drivers delivered with standalone installations of MSPWare.

USB drivers for MSP430 are located in each example's `USB_config` folder.

The Windows menus and dialogs you see may be slightly different from those shown here, depending on your version of Windows.

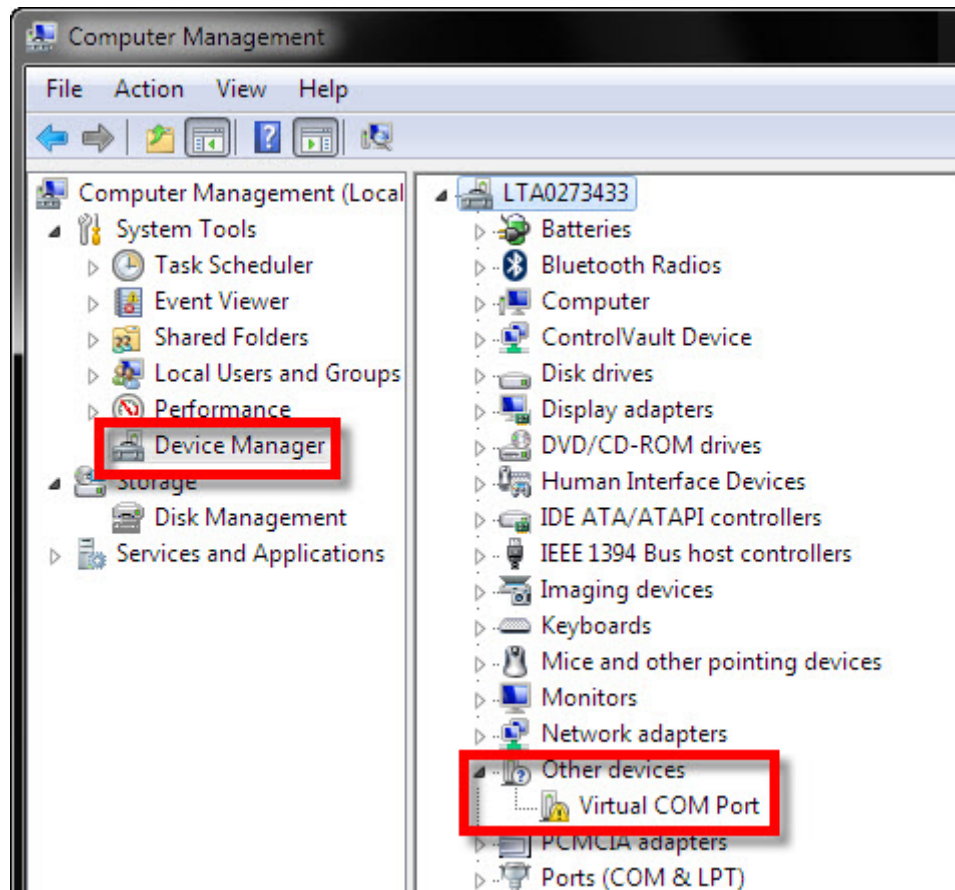
To install the USB driver, follow these steps:

1. Load and run a USB device reference example—USB Keyboard Device, USB Mouse Device, or USB CDC Mouse Device.
2. While the example is running, connect the device to the Windows PC via a USB cable. At this point, Windows will detect the device and attempt to enumerate it.
3. Open the Windows Device Manager by right-clicking on the **My Computer** desktop icon or **Computer** in the Start Menu and selecting **Manage**.



4. If you are prompted by a security warning in Windows 7, click **Yes**.

5. Select the **Device Manager** category in the left pane.
6. In the center pane, select the unknown driver that you are trying to install. For example, the device shown here is for the USB CDC driver.



7. Right-click on the device, and select **Update Driver Software**.
8. Select **Browse my computer for driver software** and browse to the location of the Windows USB drivers. Make sure the box to **Include subfolders** is checked.
9. Click **Next** to run the installation wizard. If you see a Window Security prompt, click **Install**.
10. After the driver is installed, you can determine the COM port number for the CDC (Virtual COM Port) device.

Configuring TI-RTOS

This chapter describes how to configure TI-RTOS and its components for use by your application.

Topic	Page
4.1 Starting the Configuration Tool	36
4.2 Configuring TI-RTOS Drivers	37
4.3 Configuring Components of TI-RTOS	38

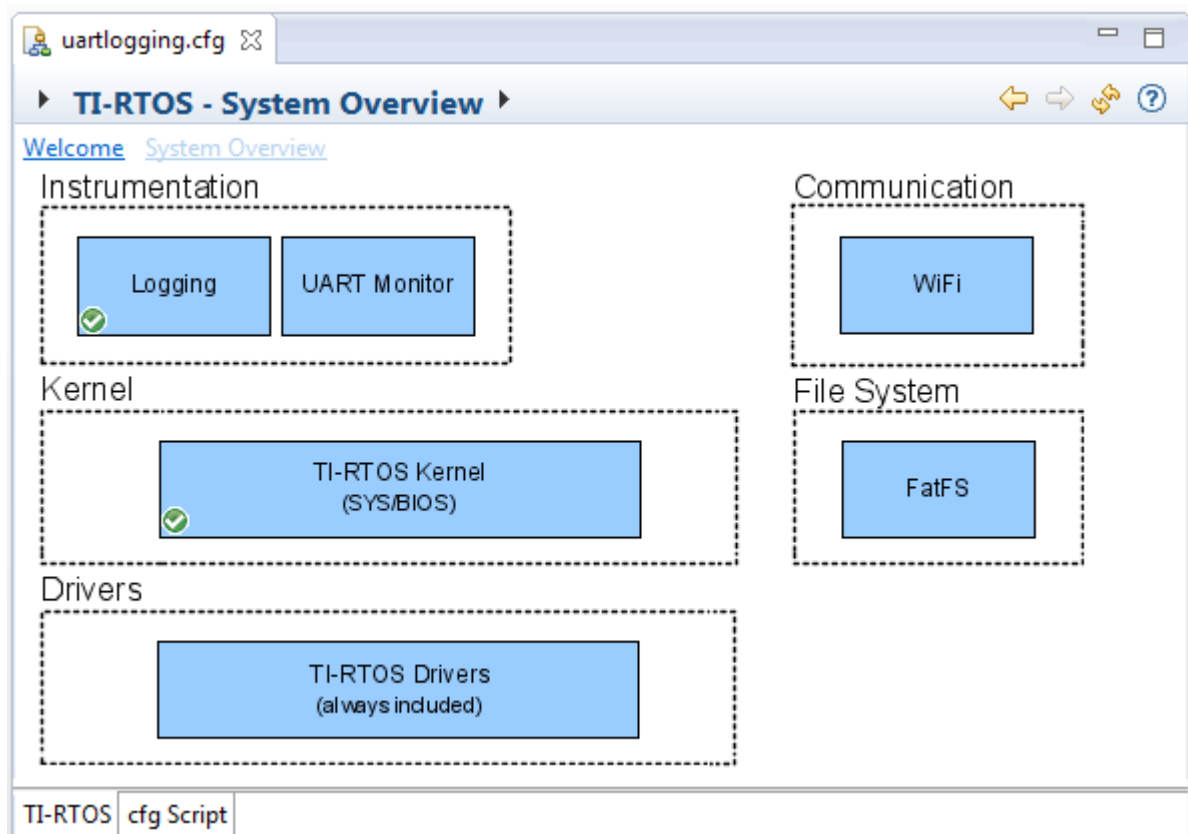
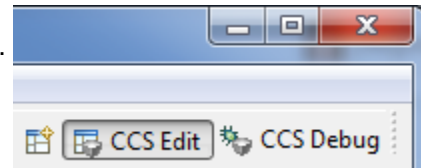
4.1 Starting the Configuration Tool

Note: The graphical configuration tool is not available within IAR Embedded Workbench. If you are using IAR, edit the project's *.cfg file within IAR as a text-based source file. See the [Texas Instruments Wiki](#) for more about using IAR with TI-RTOS.

This section shows how to open the Graphical Configuration Tool (XGCONF) to view the System Overview. For details on using XGCONF, see Chapter 2 of the [SYS/BIOS User's Guide \(SPRUEX3\)](#).

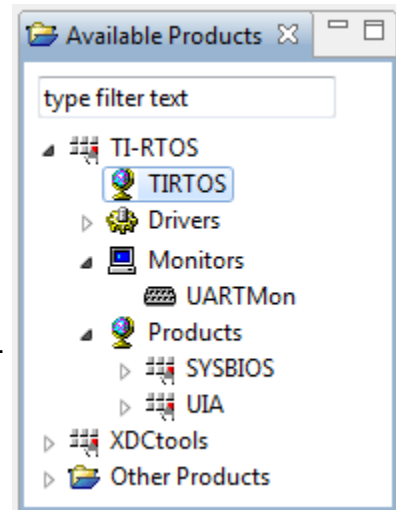
To use CCS to open the graphical tool for editing configuration files (XGCONF), follow these steps:

1. Make sure you are in the **CCS Edit** perspective of CCS. If you are not in that perspective, click the CCS Edit icon to switch back.
2. Double-click on the *.cfg configuration file for a TI-RTOS example project in the **Project Explorer** tree. (See [Section 3.1](#) if you need to create an example project.) While XGCONF is opening, the CCS status bar shows that the configuration is being processed and validated.
3. When XGCONF opens, you see the **Welcome** sheet for TI-RTOS if you are using a Driver example. (If this is the configuration file for a Kernel example or an Instrumentation example, the Welcome sheet for SYS/BIOS opens first, instead.) The Welcome sheet provides links to documentation resources.
4. Click the **System Overview** link to see a diagram of the components available through TI-RTOS. (SYS/BIOS modules are shown if you are using a Kernel example or an Instrumentation example.) A green check mark indicates the modules that are being used by the application.



5. You also see a list of Available Products in a pane on the left of the CCS window. This list allows you to select the TIRTOS module and any configurable modules in the products TI-RTOS provides.
6. Click a blue box in the System Overview to go to the configuration page for a module.

Note: If the configuration is shown in a text editor instead of XGCONF, close the text editor window. Then, right-click on the *.cfg file and choose **Open With > XGCONF**. If you are comfortable editing configuration scripts with a text editor, you can do that. However, you should not have the file open in both types of editor at the same time.



4.2 Configuring TI-RTOS Drivers

In the System Overview display for the TIRTOS module, click on the **TI-RTOS Drivers** block.



You can choose to use either the instrumented or non-instrumented driver libraries when linking with TI-RTOS. The instrumented libraries process Log events while the non-instrumented libraries do not. See the section on "Using Instrumented or Non-Instrumented Libraries" in the [TI-RTOS User's Guide](#) (SPRUHD4) for more information. This setting affects all the TI-RTOS drivers listed in [Section 1.6](#) together.

All of the TI-RTOS drivers are available to your application without being separately enabled. To reduce code size, only the driver code that your application needs to use will be compiled into your application.

4.2.1 Configuring System Support

The SysCallback module lets you configure the functions that handle System output—for example, `System_printf()` and `System_abort()`. This module handles transmissions to System output only; it does not handle responses received. See the chapter on "TI-RTOS Utilities" in the [TI-RTOS User's Guide](#) (SPRUHD4) for more about the SysCallback module.

Other SystemSupport implementations are provided with XDCtools.

- **SysMin** stores System_printf() strings in an internal buffer in RAM. SysMin requires RAM, so it not ideal for devices with minimal RAM.
- **SysStd** writes System_printf() strings to STDOUT (the CCS Console window). By default, SysStd allows System_printf() to be called from Tasks only (not Swis or hardware interrupts); it can be modified to allow calls from Swis and Hwis, but this impacts real-time performance.

4.3 Configuring Components of TI-RTOS

For information about configuring individual sub-components of TI-RTOS, see the documentation for that component. Chapter 2 of the [SYS/BIOS User's Guide \(SPRUJEX3\)](#) provides details about XGCONF. Within XGCONF, you can see the full file path to the version of the component being used by hovering your mouse cursor over a component in the "Other Products" list in the **Available Products** area.

Index

A

App Center 11
Available Products list 37

B

BoosterPacks 29
 RF430CL330 32
 SD Card 29
 TMP006 29

C

CCS
 creating a project 6, 14
 installation 11
 other documentation 8
CCS App Center 4, 11
CDC device 8
components 5
Concerto
 other documentation 9
configuration 35
 graphical editor 36

D

disk space 10
documentation 8

E

Empty Project example 16
empty.c file 16
examples 13

F

FatFs API, documentation 9
forum 8

G

GPIO driver 7
 resources used 20, 22, 26, 28

H

HID device 8

I

I2C driver 7
installation
 CCS 11
 directory 11
instrumentation 5
instrumented libraries 37

K

kernel examples 6

L

LaunchPad
 MSP-EXP430F5529LP 19
LEDs
 managed by GPIO driver 7
LoggingSetup module 18

M

MSP430F5529 7, 19
MSP430FR5969 7, 21, 27
MSP430FR5994 7, 23
MSP430FR6989 7, 25
MSP430Ware 5
MSP432P401R 7
MSP-EXP430F5529LP 7, 19
MSP-EXP430FR5969LP 7, 21, 27
MSP-EXP430FR5994LP 7, 23
MSP-EXP430FR6989LP 7, 25
MSP-EXP432P401RLP 7

N

non-instrumented libraries 37

P

Power driver 7
products directory 5
PWM driver 8

R

readme.txt file 18
Resource Explorer 6, 14
RF430CL330 module 32

S

SD Card BoosterPack 29
SDSPI driver 8
 resources used 20, 22, 26, 28
SPI driver 8
 resources used 20, 22, 26, 28
SYS/BIOS 5
 other documentation 8
SysCallback module, configuration 37
SysMin module 18
System Overview configuration 36
system requirements 10

T

target configuration file 16
TMP006 BoosterPack 29
TPL0401EVM board 32

U

UART driver 8
 resources used 20, 22, 26, 28
UIA 5
 other documentation 9
USB Descriptor Tool 20
USB driver
 resources used 20
USB drivers 8
USB_config folder 20

W

Watchdog driver 8
 resources used 20, 22, 26, 28
WiFi driver 8
 resources used 20, 22, 26, 28
wiki 8

X

XDCtools 5
 other documentation 9
XGCONF
 configuring other components 38
 starting 36

IMPORTANT NOTICE

Texas Instruments Incorporated and its subsidiaries (TI) reserve the right to make corrections, enhancements, improvements and other changes to its semiconductor products and services per JESD46, latest issue, and to discontinue any product or service per JESD48, latest issue. Buyers should obtain the latest relevant information before placing orders and should verify that such information is current and complete. All semiconductor products (also referred to herein as “components”) are sold subject to TI's terms and conditions of sale supplied at the time of order acknowledgment.

TI warrants performance of its components to the specifications applicable at the time of sale, in accordance with the warranty in TI's terms and conditions of sale of semiconductor products. Testing and other quality control techniques are used to the extent TI deems necessary to support this warranty. Except where mandated by applicable law, testing of all parameters of each component is not necessarily performed.

TI assumes no liability for applications assistance or the design of Buyers' products. Buyers are responsible for their products and applications using TI components. To minimize the risks associated with Buyers' products and applications, Buyers should provide adequate design and operating safeguards.

TI does not warrant or represent that any license, either express or implied, is granted under any patent right, copyright, mask work right, or other intellectual property right relating to any combination, machine, or process in which TI components or services are used. Information published by TI regarding third-party products or services does not constitute a license to use such products or services or a warranty or endorsement thereof. Use of such information may require a license from a third party under the patents or other intellectual property of the third party, or a license from TI under the patents or other intellectual property of TI.

Reproduction of significant portions of TI information in TI data books or data sheets is permissible only if reproduction is without alteration and is accompanied by all associated warranties, conditions, limitations, and notices. TI is not responsible or liable for such altered documentation. Information of third parties may be subject to additional restrictions.

Resale of TI components or services with statements different from or beyond the parameters stated by TI for that component or service voids all express and any implied warranties for the associated TI component or service and is an unfair and deceptive business practice. TI is not responsible or liable for any such statements.

Buyer acknowledges and agrees that it is solely responsible for compliance with all legal, regulatory and safety-related requirements concerning its products, and any use of TI components in its applications, notwithstanding any applications-related information or support that may be provided by TI. Buyer represents and agrees that it has all the necessary expertise to create and implement safeguards which anticipate dangerous consequences of failures, monitor failures and their consequences, lessen the likelihood of failures that might cause harm and take appropriate remedial actions. Buyer will fully indemnify TI and its representatives against any damages arising out of the use of any TI components in safety-critical applications.

In some cases, TI components may be promoted specifically to facilitate safety-related applications. With such components, TI's goal is to help enable customers to design and create their own end-product solutions that meet applicable functional safety standards and requirements. Nonetheless, such components are subject to these terms.

No TI components are authorized for use in FDA Class III (or similar life-critical medical equipment) unless authorized officers of the parties have executed a special agreement specifically governing such use.

Only those TI components which TI has specifically designated as military grade or “enhanced plastic” are designed and intended for use in military/aerospace applications or environments. Buyer acknowledges and agrees that any military or aerospace use of TI components which have not been so designated is solely at the Buyer's risk, and that Buyer is solely responsible for compliance with all legal and regulatory requirements in connection with such use.

TI has specifically designated certain components as meeting ISO/TS16949 requirements, mainly for automotive use. In any case of use of non-designated products, TI will not be responsible for any failure to meet ISO/TS16949.

Products

Audio	www.ti.com/audio
Amplifiers	amplifier.ti.com
Data Converters	dataconverter.ti.com
DLP® Products	www.dlp.com
DSP	dsp.ti.com
Clocks and Timers	www.ti.com/clocks
Interface	interface.ti.com
Logic	logic.ti.com
Power Mgmt	power.ti.com
Microcontrollers	microcontroller.ti.com
RFID	www.ti-rfid.com
OMAP Mobile Processors	www.ti.com/omap
Wireless Connectivity	www.ti.com/wirelessconnectivity

Applications

Automotive and Transportation	www.ti.com/automotive
Communications and Telecom	www.ti.com/communications
Computers and Peripherals	www.ti.com/computers
Consumer Electronics	www.ti.com/consumer-apps
Energy and Lighting	www.ti.com/energy
Industrial	www.ti.com/industrial
Medical	www.ti.com/medical
Security	www.ti.com/security
Space, Avionics and Defense	www.ti.com/space-avionics-defense
Video & Imaging	www.ti.com/video
TI E2E Community	e2e.ti.com