



Texas Instruments

PMP4471 Test Procedure

China Power Reference Design

7/10/2015

1 GENERAL

1.1 PURPOSE

To provide detailed data for evaluating and verifying the PMP4471, which uses TI Buck controller TPS54340-Q1 and TPS2549-Q1.

1.2 REFERENCE DOCUMENTATION

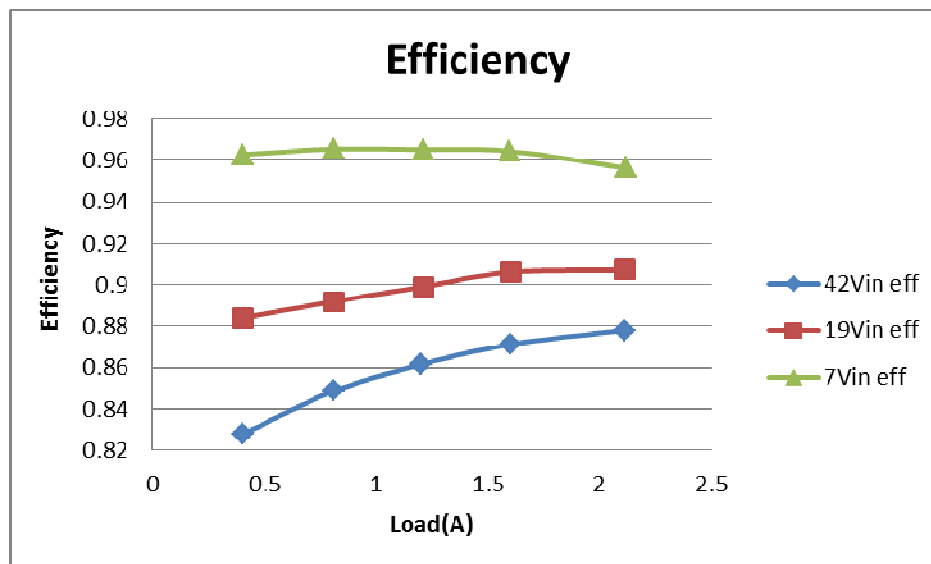
Schematic PMP4471_SCH.PDF
Assembly PMP4471_PCB.PDF
BOM

1.3 TEST EQUIPMENTS

Multi-meter (current): Fluke 287C*2
Multi-meter (voltage): Agilent 34401A
DC Source: GPS 3303C
E-Load: Chroma 63101 module

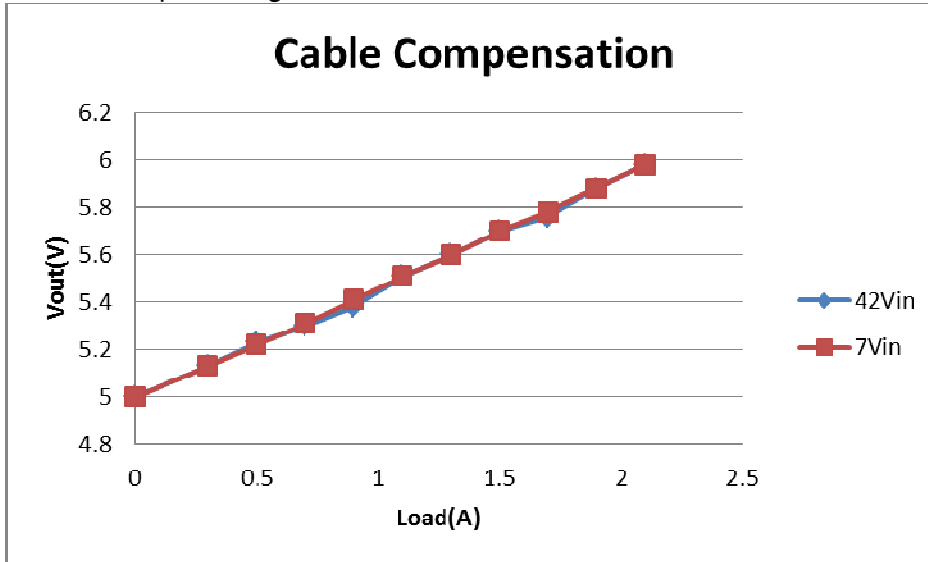
2 Performance data and waveform

2.1 EFFICIENCY



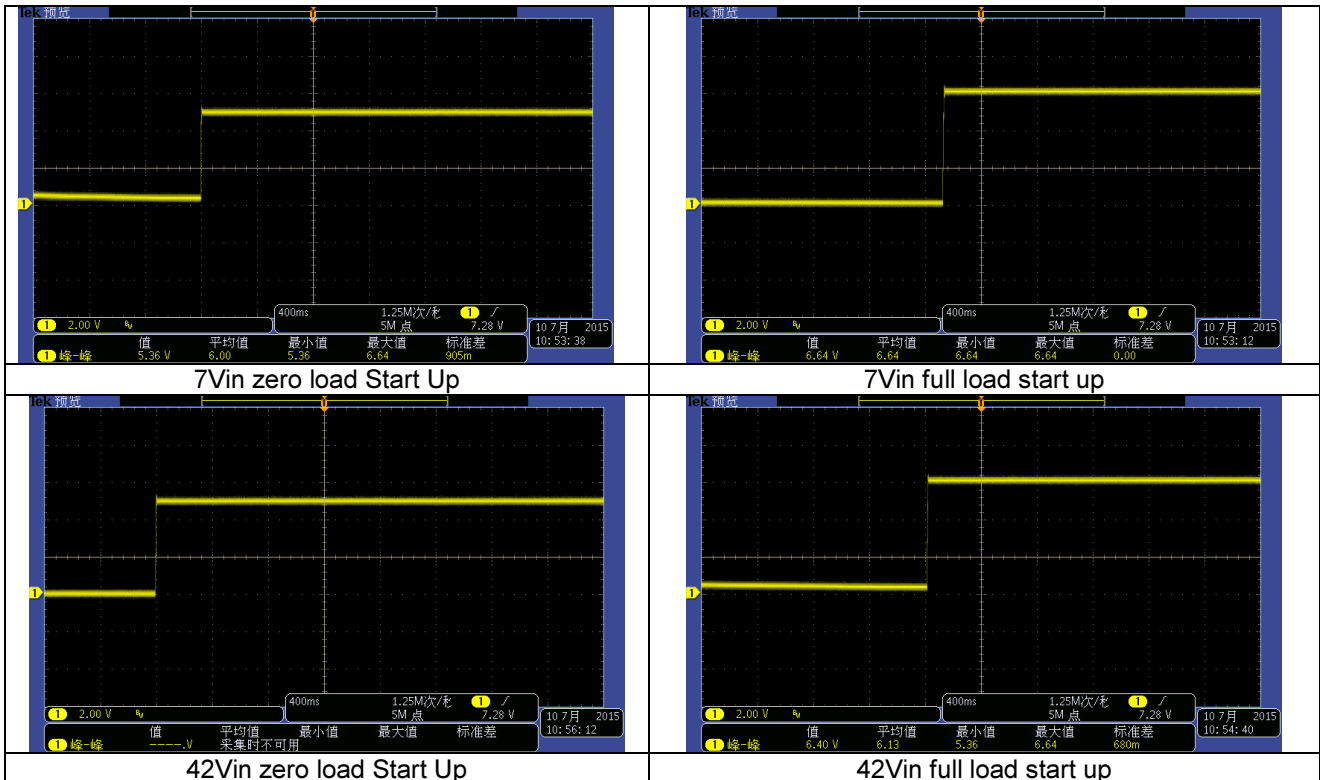
2.2 Cable compensation over output current

The output voltage is tested at USB terminal.



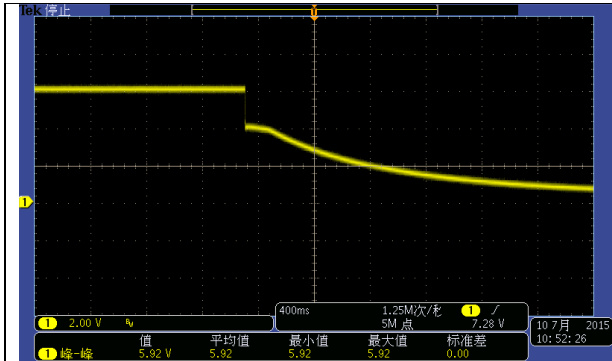
2.3 Start Up

CH1:Vout

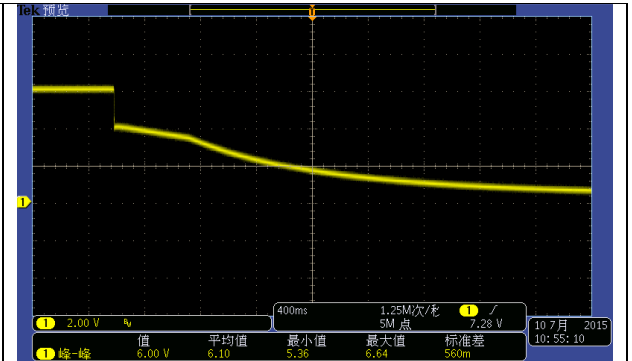


2.4 Shut down

CH1:Vout



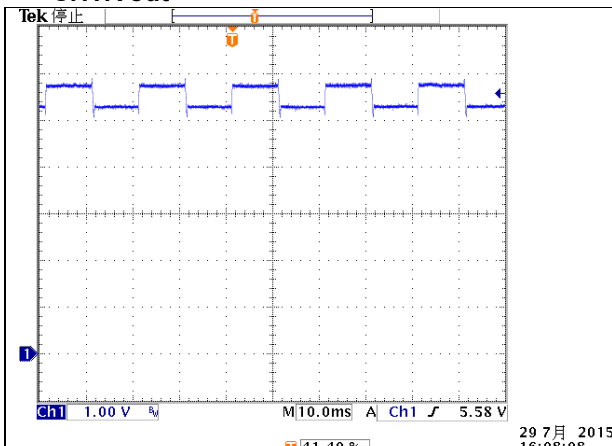
7Vin full load shut down



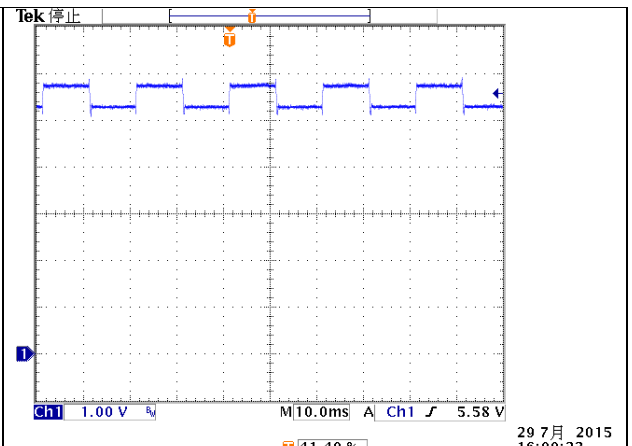
42Vin full load shut down

2.5 Dynamic Performance

CH1:Vout



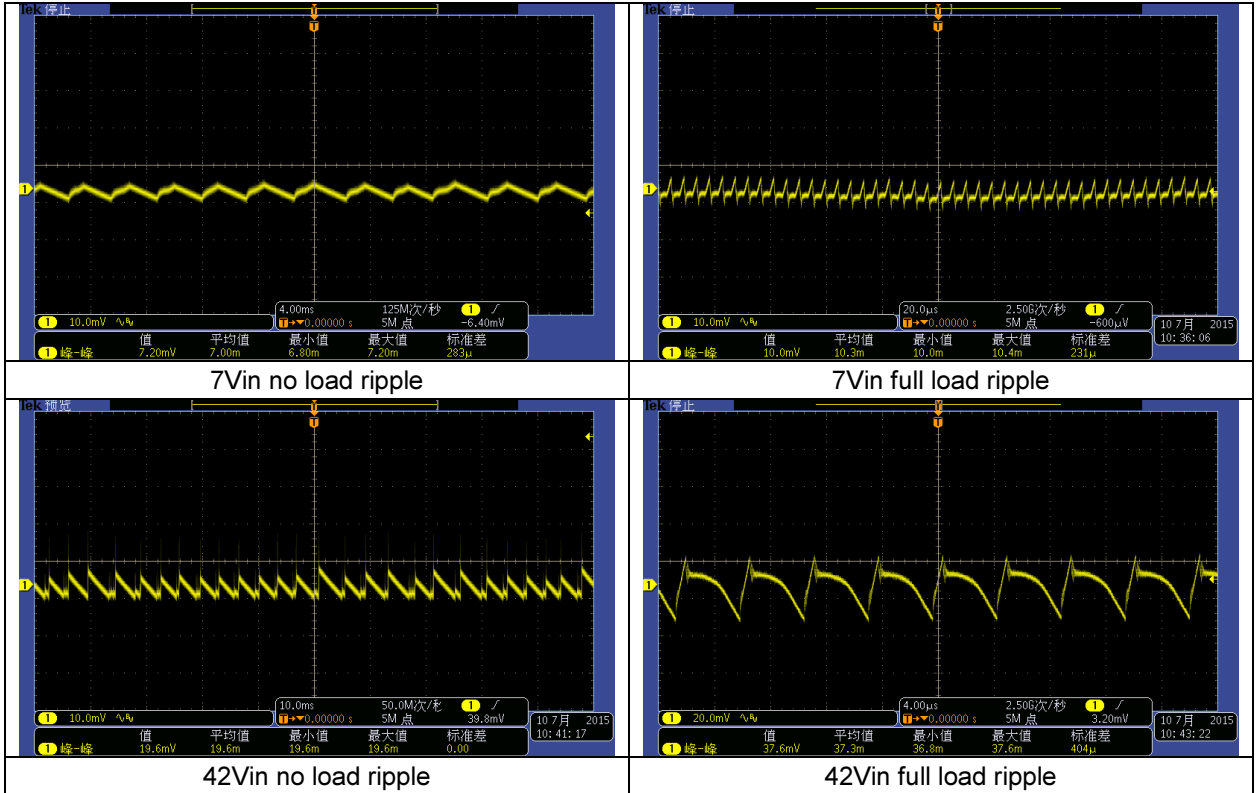
7Vin 25%~75% load



42Vin 25%~75% load

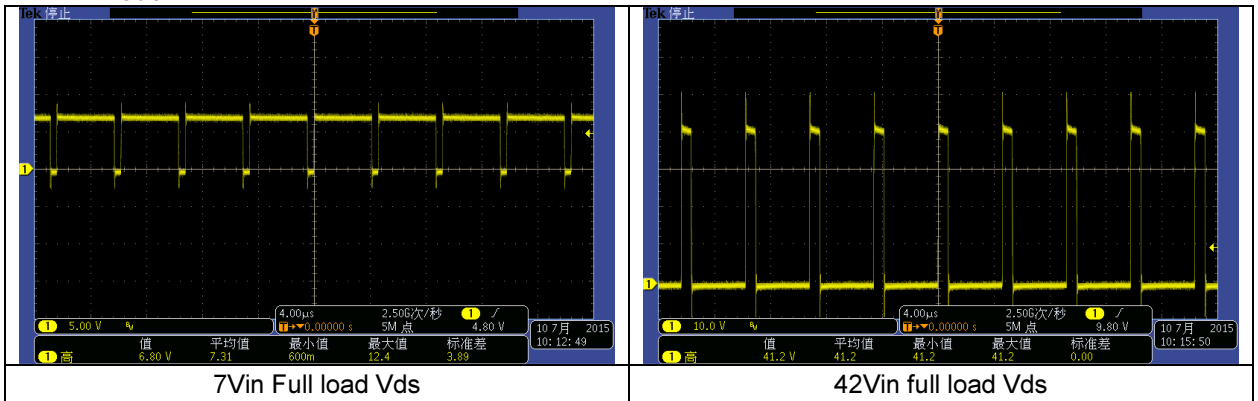
2.6 OUTPUT Voltage Ripple

CH1:Vout



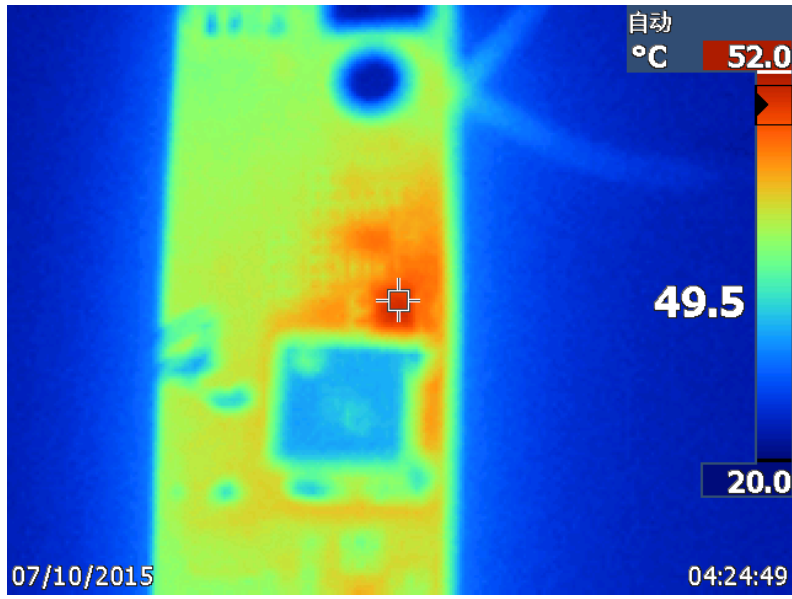
2.7 Mosfet Vds

CH1:Vout



2.8 Thermal Performance

The thermal is tested under 24Vin with full load output 1 hour.



IMPORTANT NOTICE AND DISCLAIMER

TI PROVIDES TECHNICAL AND RELIABILITY DATA (INCLUDING DATASHEETS), DESIGN RESOURCES (INCLUDING REFERENCE DESIGNS), APPLICATION OR OTHER DESIGN ADVICE, WEB TOOLS, SAFETY INFORMATION, AND OTHER RESOURCES "AS IS" AND WITH ALL FAULTS, AND DISCLAIMS ALL WARRANTIES, EXPRESS AND IMPLIED, INCLUDING WITHOUT LIMITATION ANY IMPLIED WARRANTIES OF MERCHANTABILITY, FITNESS FOR A PARTICULAR PURPOSE OR NON-INFRINGEMENT OF THIRD PARTY INTELLECTUAL PROPERTY RIGHTS.

These resources are intended for skilled developers designing with TI products. You are solely responsible for (1) selecting the appropriate TI products for your application, (2) designing, validating and testing your application, and (3) ensuring your application meets applicable standards, and any other safety, security, or other requirements. These resources are subject to change without notice. TI grants you permission to use these resources only for development of an application that uses the TI products described in the resource. Other reproduction and display of these resources is prohibited. No license is granted to any other TI intellectual property right or to any third party intellectual property right. TI disclaims responsibility for, and you will fully indemnify TI and its representatives against, any claims, damages, costs, losses, and liabilities arising out of your use of these resources.

TI's products are provided subject to TI's Terms of Sale (<https://www.ti.com/legal/termsofsale.html>) or other applicable terms available either on [ti.com](https://www.ti.com) or provided in conjunction with such TI products. TI's provision of these resources does not expand or otherwise alter TI's applicable warranties or warranty disclaimers for TI products.

Mailing Address: Texas Instruments, Post Office Box 655303, Dallas, Texas 75265
Copyright © 2021, Texas Instruments Incorporated