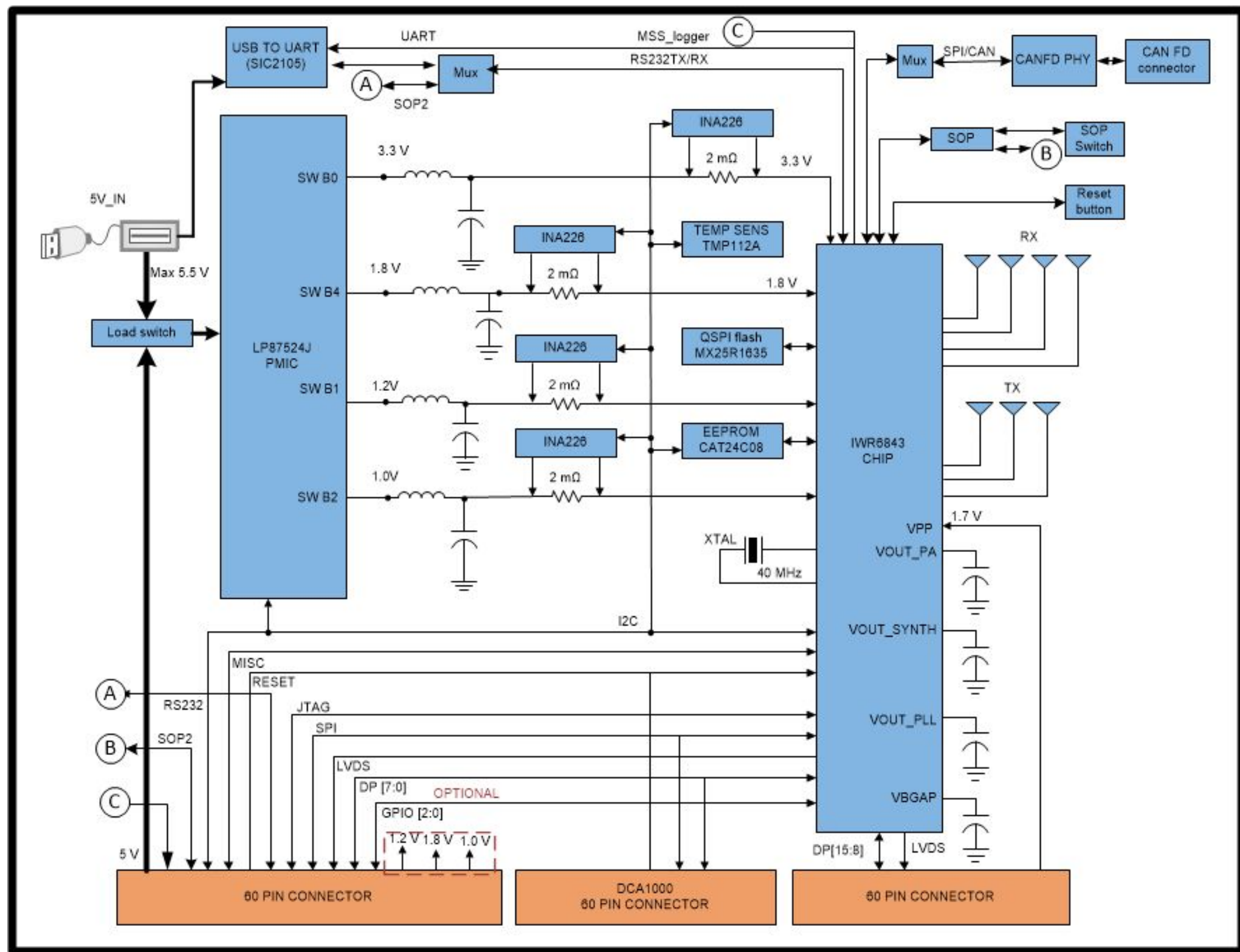


## Revision History

Rev	ECN #	Approved Date	Approved by	Notes
B	1	3/2/2020	Charles Oladimeji	REV B

## BLOCK DIAGRAM



S.No	DESCRIPTION	I2C ADDRESS
1	CURRENT SENSOR 3.3V	100 0100
2	CURRENT SENSOR 1.8V	100 0000
3	CURRENT SENSOR 1.2V	100 0001
4	CURRENT SENSOR 1.0V	100 0101
5	TEMPERATURE SENSOR1	100 1011
6	LP8770 PMIC	110 0000
7	EEPROM	1010 0XX

1	2	3	4	5	6
A					A
B					B
C					C
D					D

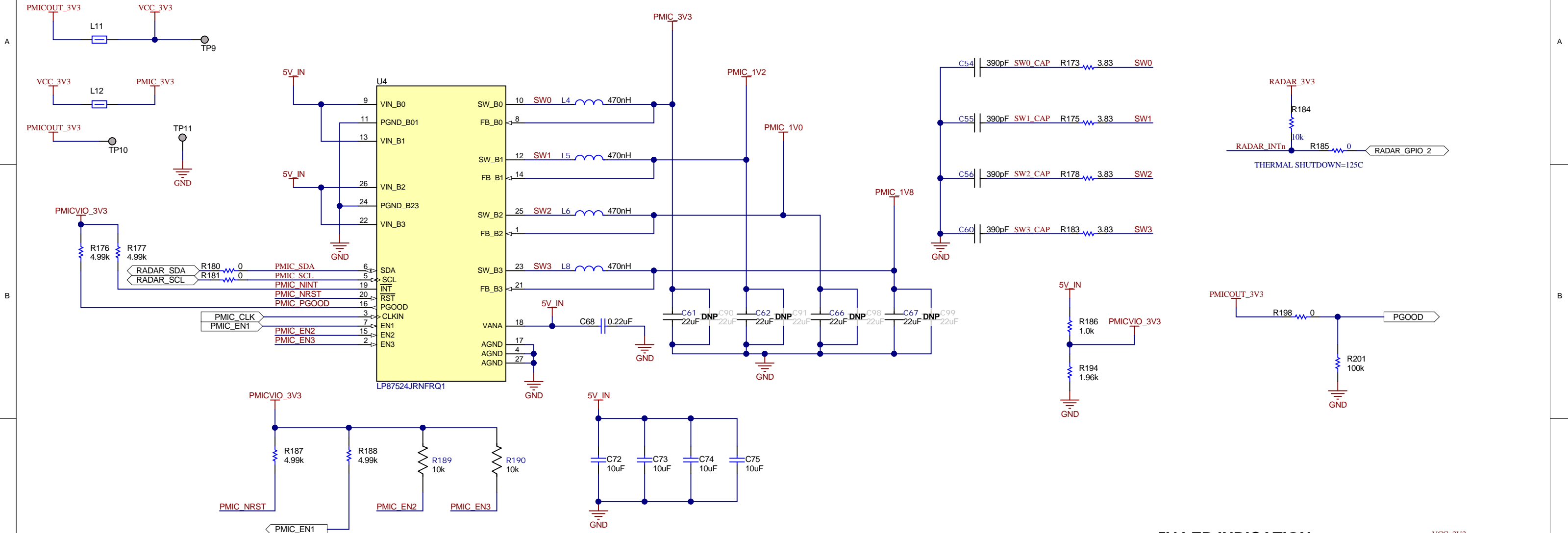
# TABLE OF CONTENTS

SHEET NO.	SHEET NAME
1	Block diagram
2	Table of Contents
3	PMIC
4	IWR6843 Chip
5	Decoupling caps_LC_Filters
6	QSPI Flash
7	60Pin HD Connector
8	Temp_Current_Sensor
9	USB to UART
10	DCA Connector
11	SOP Control
12	CAN Interface
13	Hardware

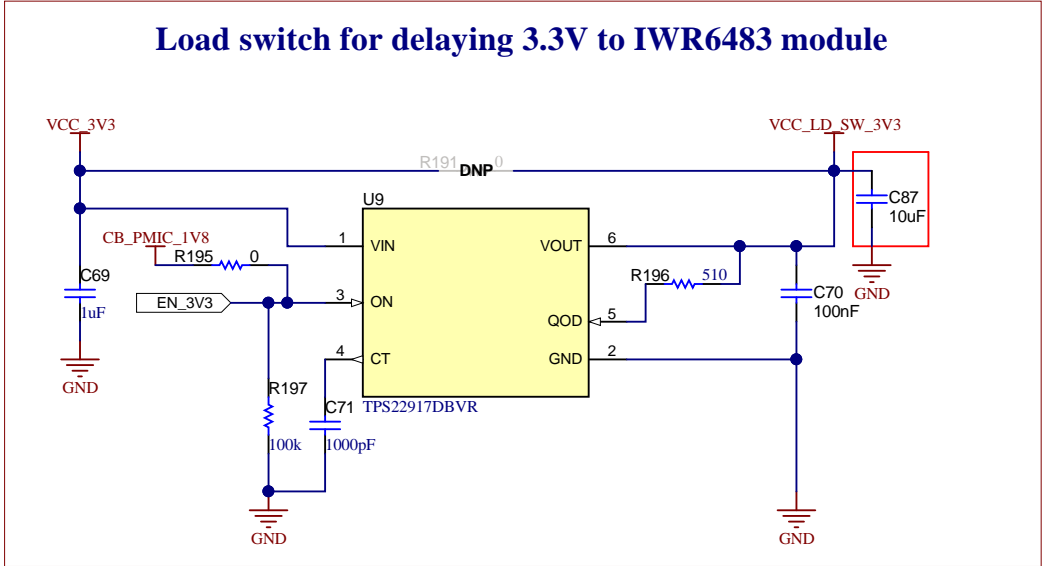
Texas Instruments and/or its licensors do not warrant the accuracy or completeness of this specification or any information contained therein. Texas Instruments and/or its licensors do not warrant that this design will meet the specifications, will be suitable for your application or fit for any particular purpose, or will operate in an implementation. Texas Instruments and/or its licensors do not warrant that the design is production worthy. You should completely validate and test your design implementation to confirm the system functionality for your application.

Orderable: IWR6843ISK-ODS	Designed for: Public Release	Mod. Date: 4/9/2020
TID #: N/A	Project Title: IWR6843ISK-ODS	
Number: PROC075	Rev: D	Sheet Title: TABLE OF CONTENTS
SVN Rev: Not in version control	Assembly Variant: 001_IWR	Sheet: 2 of 13
Drawn By: Charles F. Oladimeji	File: PROC075D_Table_Of_Contents.SchDoc	Size: B
Engineer: Charles F. Oladimeji	Contact: http://www.ti.com/support	

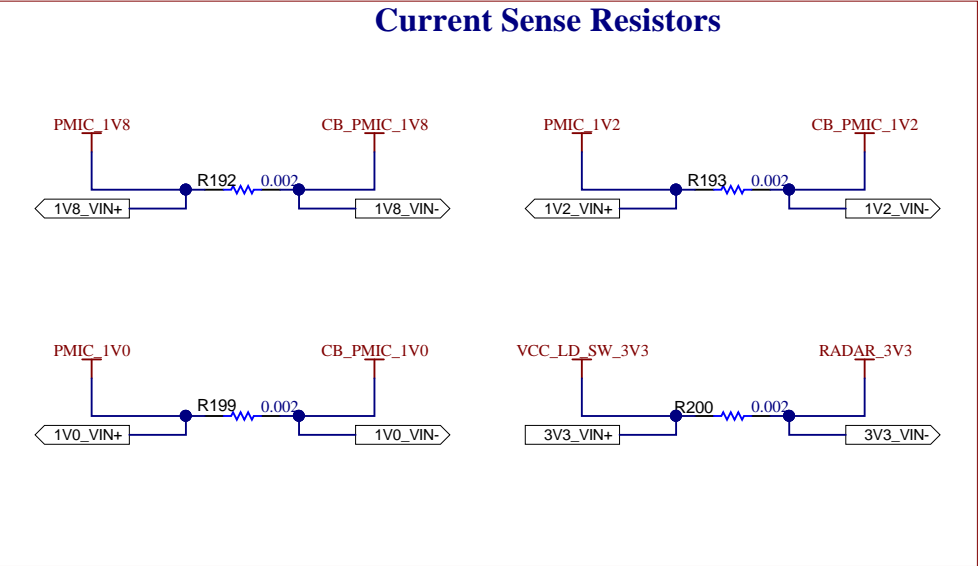
# PMIC (3.3V, 1.2V, 1.0V, 1.8V OUTPUTS)



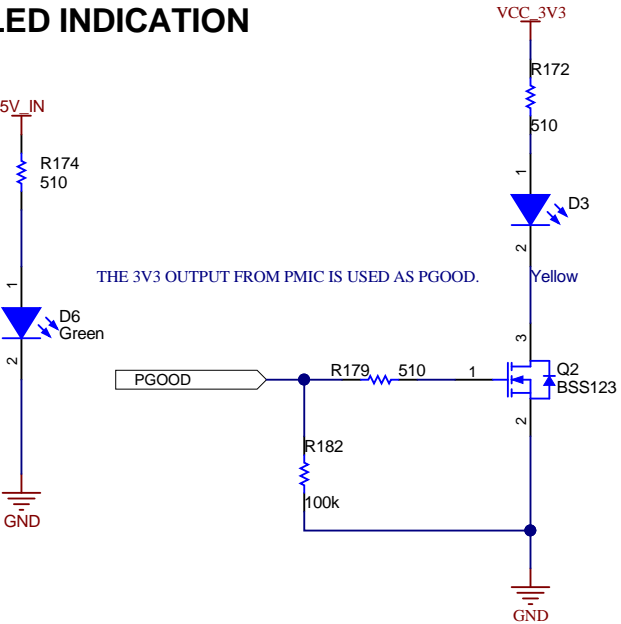
## Load switch for delaying 3.3V to IWR6483 module



## Current Sense Resistors



## 5V LED INDICATION



Texas Instruments and/or its licensors do not warrant the accuracy or completeness of this specification or any information contained therein. Texas Instruments and/or its licensors do not warrant that this design will meet the specifications, will be suitable for your application or fit for any particular purpose, or will operate in an implementation. Texas Instruments and/or its licensors do not warrant that the design is production worthy. You should completely validate and test your design implementation to confirm the system functionality for your application.

Orderable: IWR6843ISK-ODS	Designed for: Public Release	Mod. Date: 6/15/2020
TID #: N/A	Project Title: IWR6843ISK-ODS	
Number: PROC075	Rev: D	Sheet Title: PMIC
SVN Rev: Not in version control	Assembly Variant: 001_IWR	Sheet: 3 of 13
Drawn By: Charles F. Oladimeji	File: PROC075D_PMIC.SchDoc	Size: B
Engineer: Charles F. Oladimeji	Contact: <a href="http://www.ti.com/support">http://www.ti.com/support</a>	

IWR6843 Chip

A

B

C

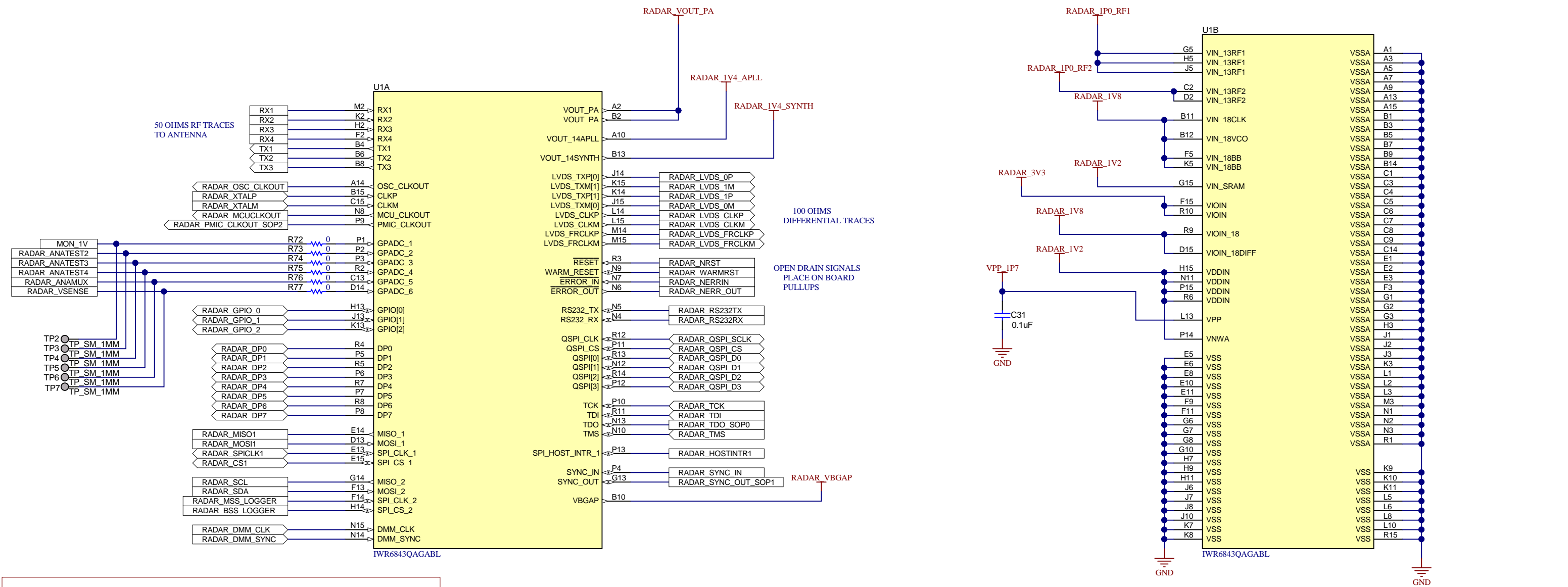
D

A

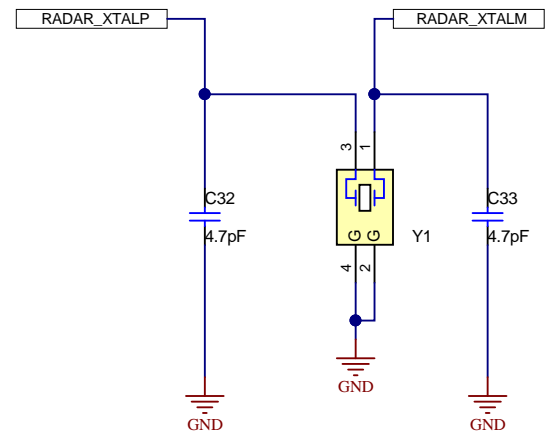
B

C

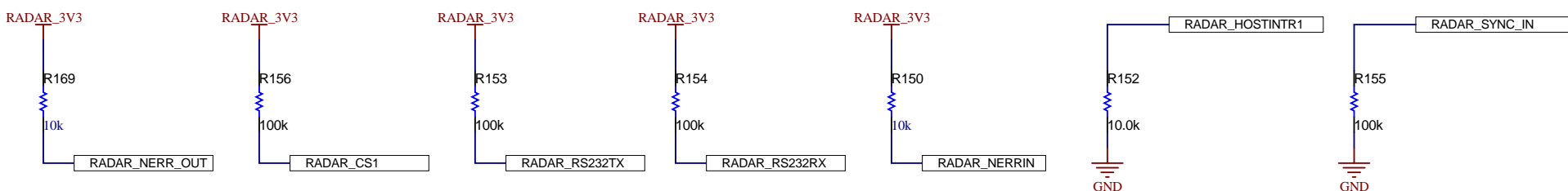
D



Crystal Oscillator  
40MHz




PULL UPs/DOWNs FOR SPI CS1, NERRIN, RS232, SYNC\_IN & HOST\_INTr



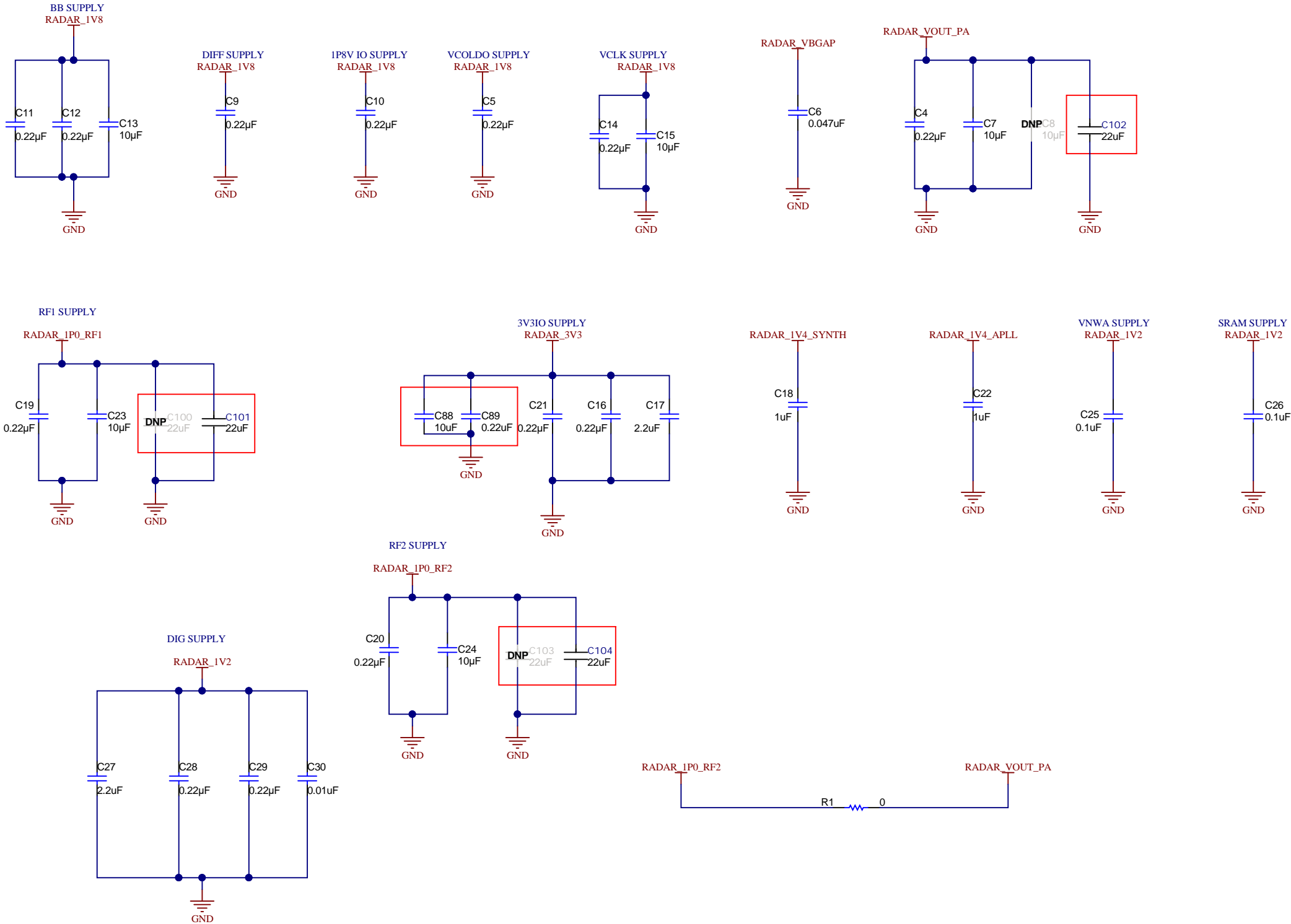
Texas Instruments and/or its licensors do not warrant the accuracy or completeness of this specification or any information contained therein. Texas Instruments and/or its licensors do not warrant that this design will meet the specifications, will be suitable for your application or fit for any particular purpose, or will operate in an implementation. Texas Instruments and/or its licensors do not warrant that the design is production worthy. You should completely validate and test your design implementation to confirm the system functionality for your application.

Orderable: IWR6843ISK-ODS	Designed for: Public Release	Mod. Date: 4/9/2020
TID #: N/A	Project Title: IWR6843ISK-ODS	
Number: PROC075	Rev: D	Sheet Title: IWR6843_CHIP
SVN Rev: Not in version control	Assembly Variant: 001_IWR	Sheet: 4 of 13
Drawn By: Charles F. Oladimeji	File: PROC075D_IWR6843_Chip_SchDoc	Size: B
Engineer: Charles F. Oladimeji	Contact: http://www.ti.com/support	

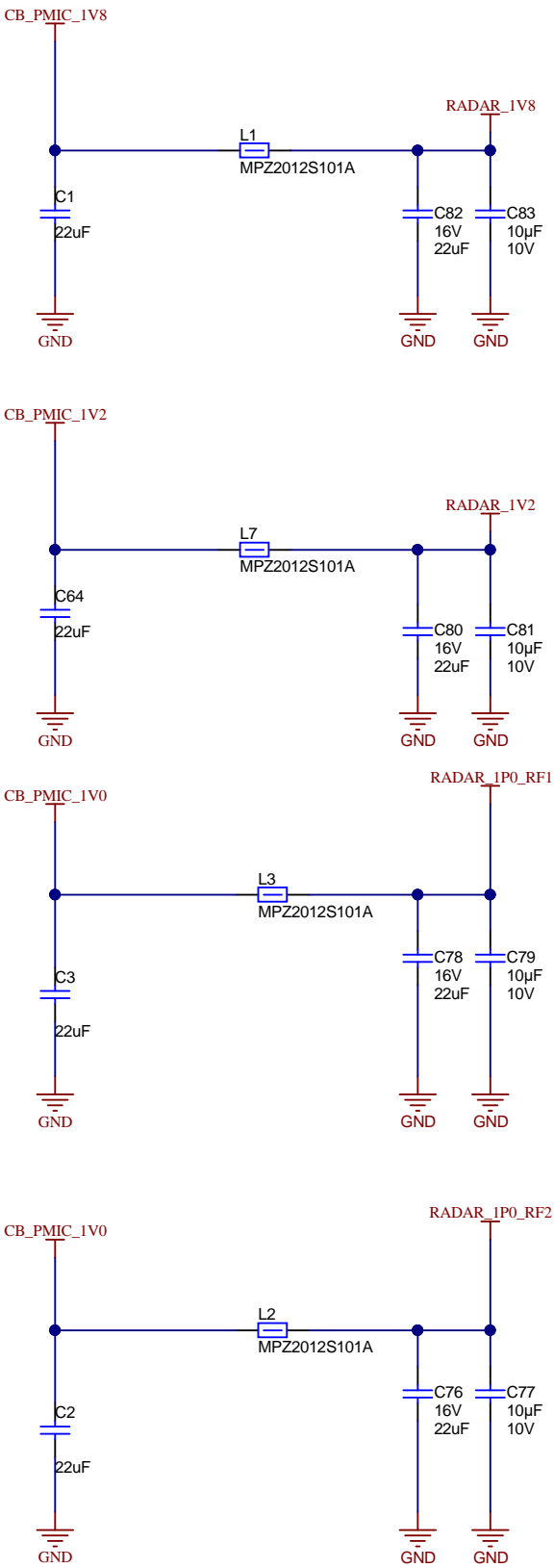


http://www.ti.com  
© Texas Instruments 2020

SUPPLY\_DECOUPLING\_CAPS



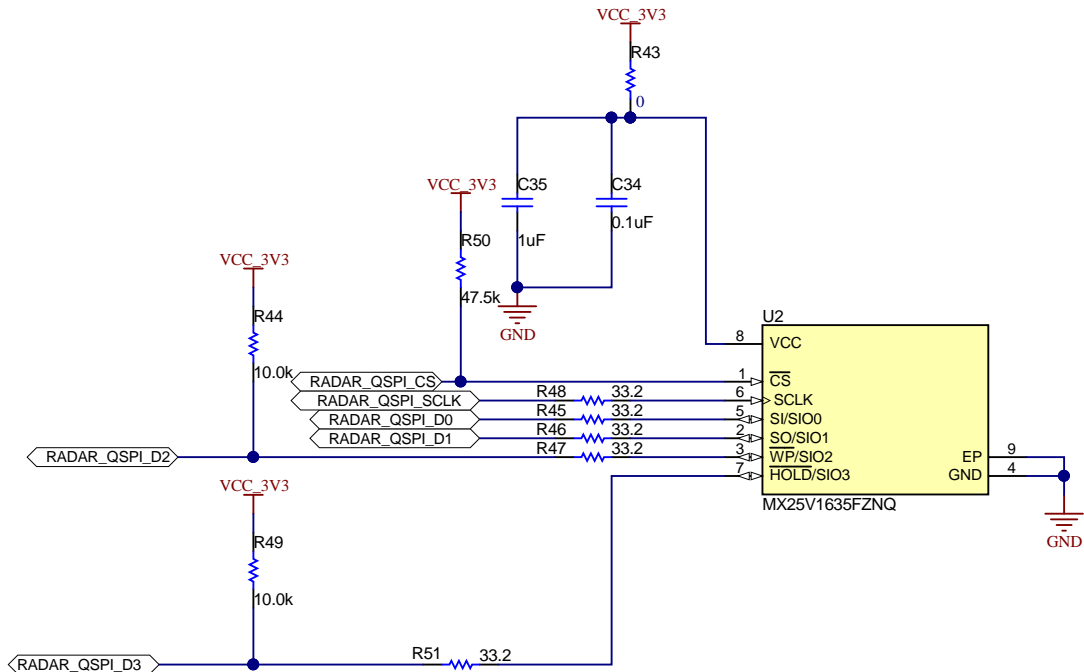
PMIC LC Filters



Texas Instruments and/or its licensors do not warrant the accuracy or completeness of this specification or any information contained therein. Texas Instruments and/or its licensors do not warrant that this design will meet the specifications, will be suitable for your application or fit for any particular purpose, or will operate in an implementation. Texas Instruments and/or its licensors do not warrant that the design is production worthy. You should completely validate and test your design implementation to confirm the system functionality for your application.

Orderable: IWR6843ISK-ODS	Designed for: Public Release	Mod. Date: 6/15/2020
TID #: N/A	Project Title: IWR6843ISK-ODS	
Number: PROC075	Rev: D	Sheet Title: Decoupling Caps
SVN Rev: Not in version control	Assembly Variant: 001_IWR	Sheet: 5 of 13
Drawn By: Charles F. Oladimeji	File: PROC075D_Decoupling_caps.SchDoc	Size: B
Engineer: Charles F. Oladimeji	Contact: http://www.ti.com/support	

QSPI FLASH

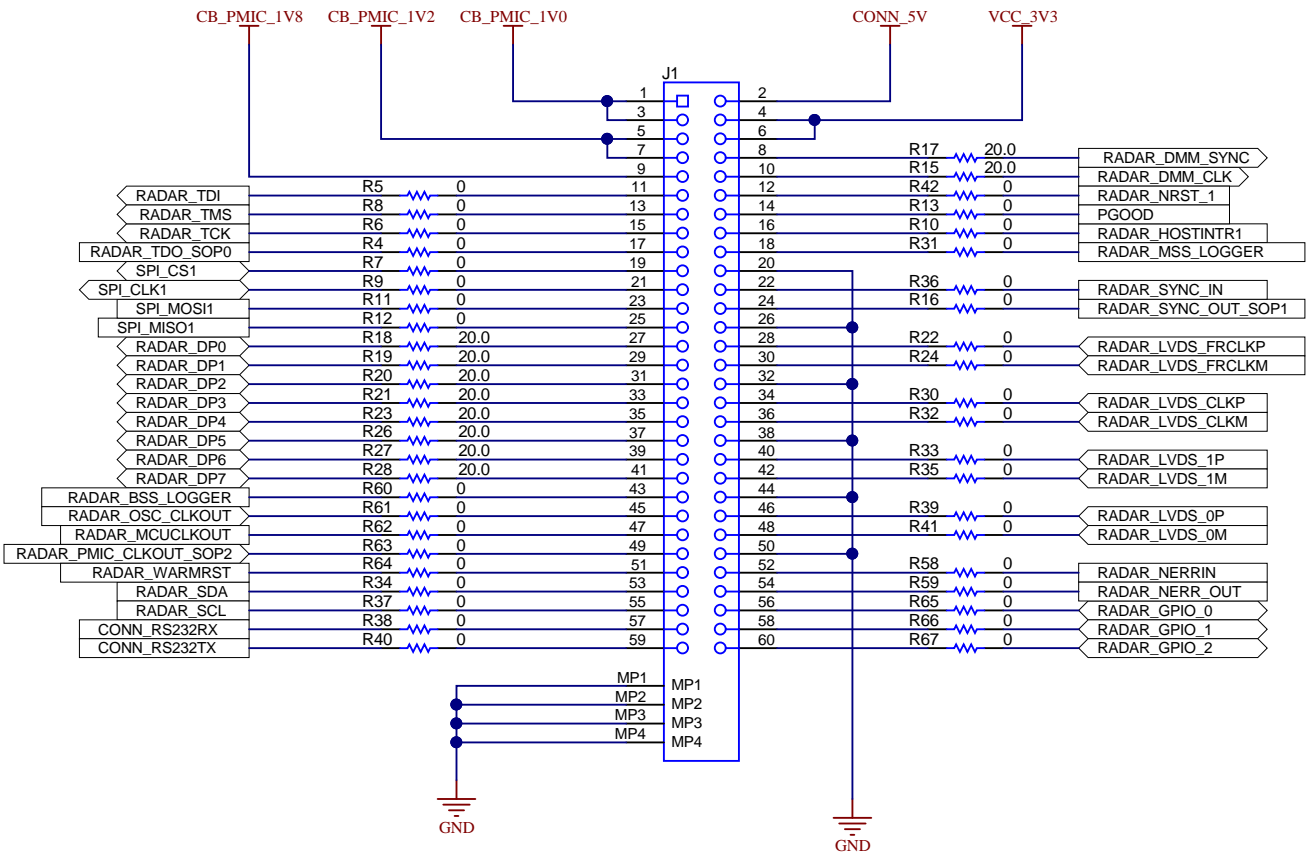


Texas Instruments and/or its licensors do not warrant the accuracy or completeness of this specification or any information contained therein. Texas Instruments and/or its licensors do not warrant that this design will meet the specifications, will be suitable for your application or fit for any particular purpose, or will operate in an implementation. Texas Instruments and/or its licensors do not warrant that the design is production worthy. You should completely validate and test your design implementation to confirm the system functionality for your application.

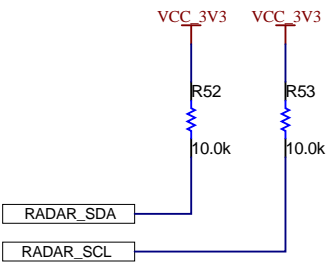
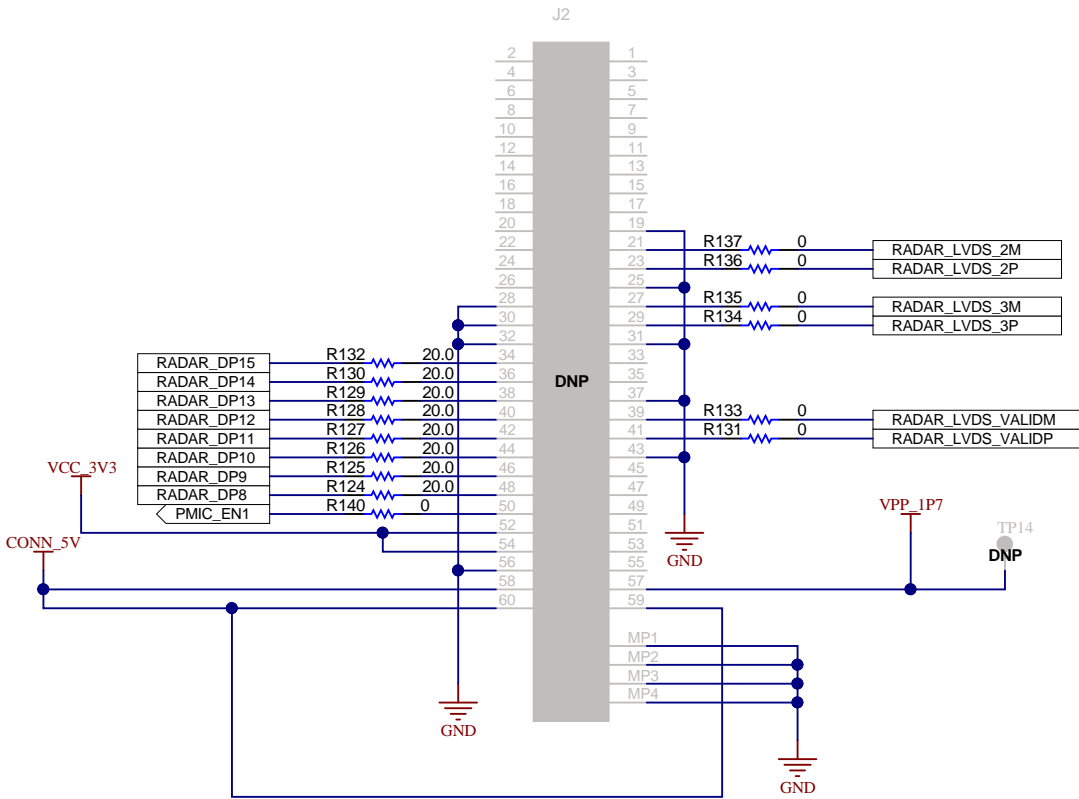
Orderable: IWR6843ISK-ODS	Designed for: Public Release	Mod. Date: 4/9/2020
TID #: N/A	Project Title: IWR6843ISK-ODS	
Number: PROC075	Rev: D	Sheet Title: QSPI Flash
SVN Rev: Not in version control	Assembly Variant: 001_IWR	Sheet: 6 of 13
Drawn By: Charles F. Oladimeji	File: PROC075D_QSPI_Flash_section.SchDoc	Size: B
Engineer: Charles F. Oladimeji	Contact: http://www.ti.com/support	

CONNECTORS

60 PIN HD CONNECTOR



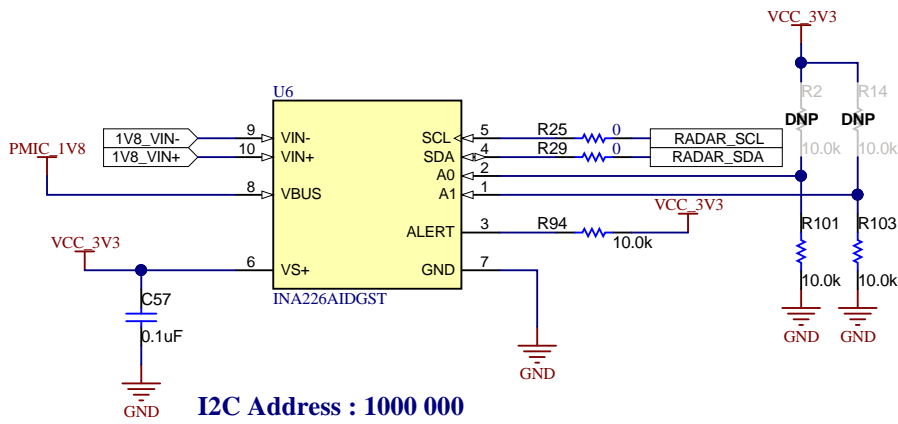
60 PIN HD CONNECTOR FOR xWRxxxx DEVICES COMPATABILITY



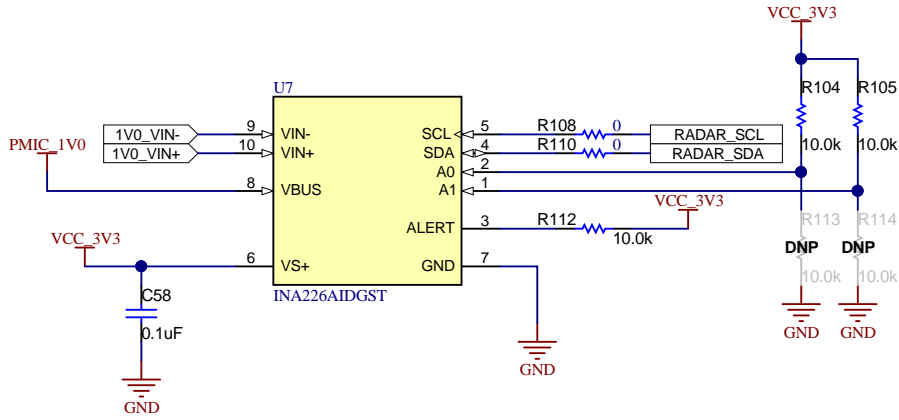
Texas Instruments and/or its licensors do not warrant the accuracy or completeness of this specification or any information contained therein. Texas Instruments and/or its licensors do not warrant that this design will meet the specifications, will be suitable for your application or fit for any particular purpose, or will operate in an implementation. Texas Instruments and/or its licensors do not warrant that the design is production worthy. You should completely validate and test your design implementation to confirm the system functionality for your application.



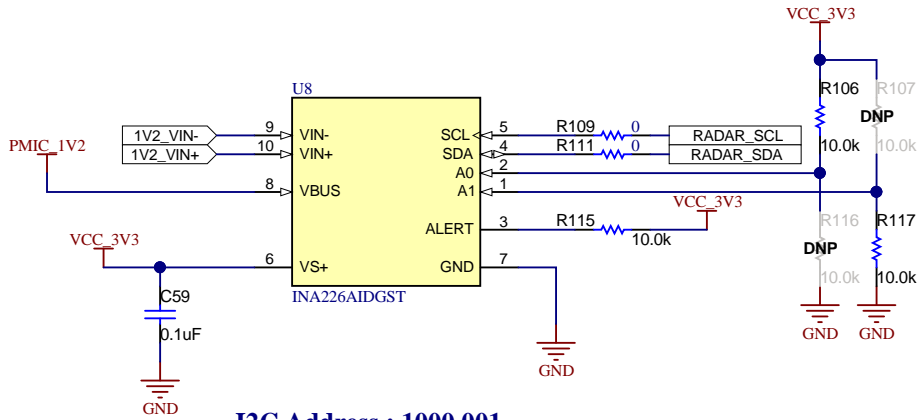
CURRENT SENSOR



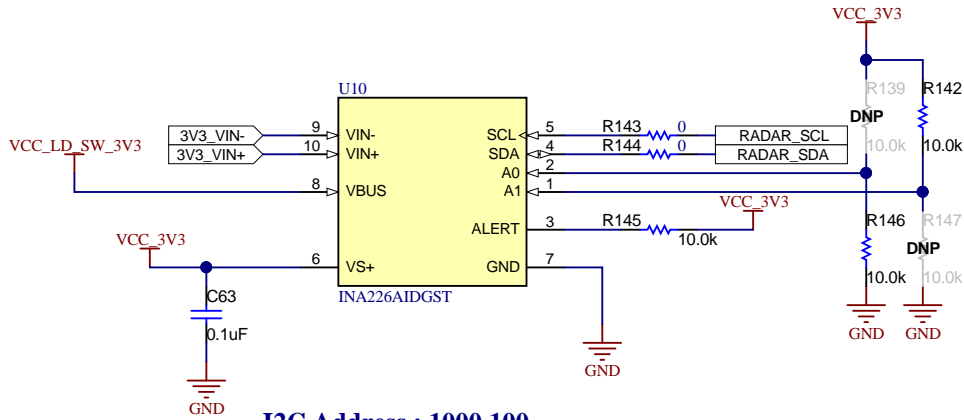
I2C Address : 1000 000



I2C Address : 1000 101

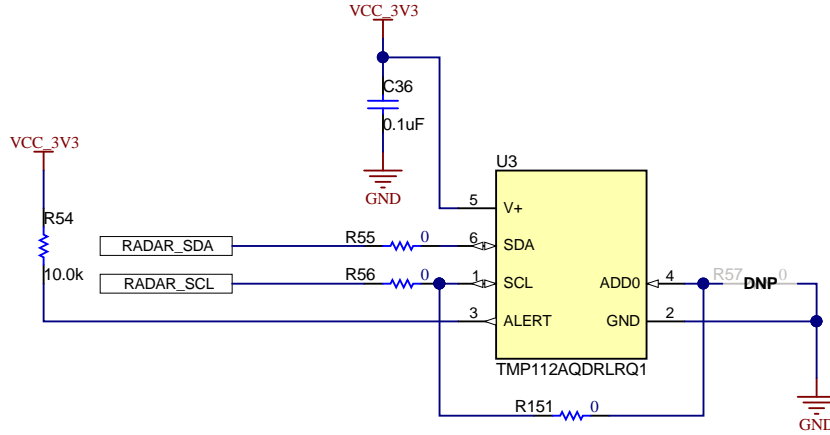


I2C Address : 1000 001



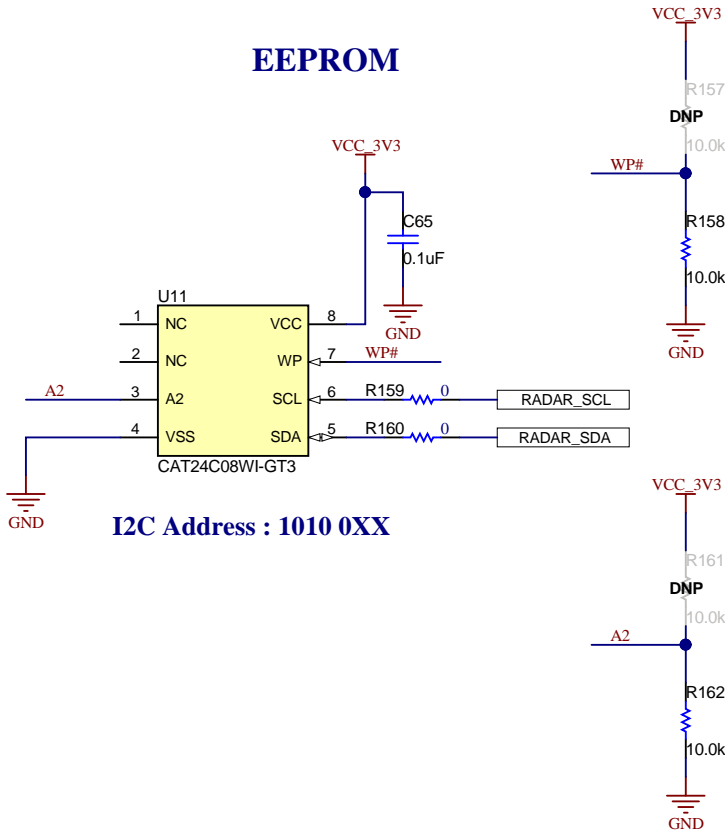
I2C Address : 1000 100

TEMPERATURE SENSOR



I2C Address : 1001 011

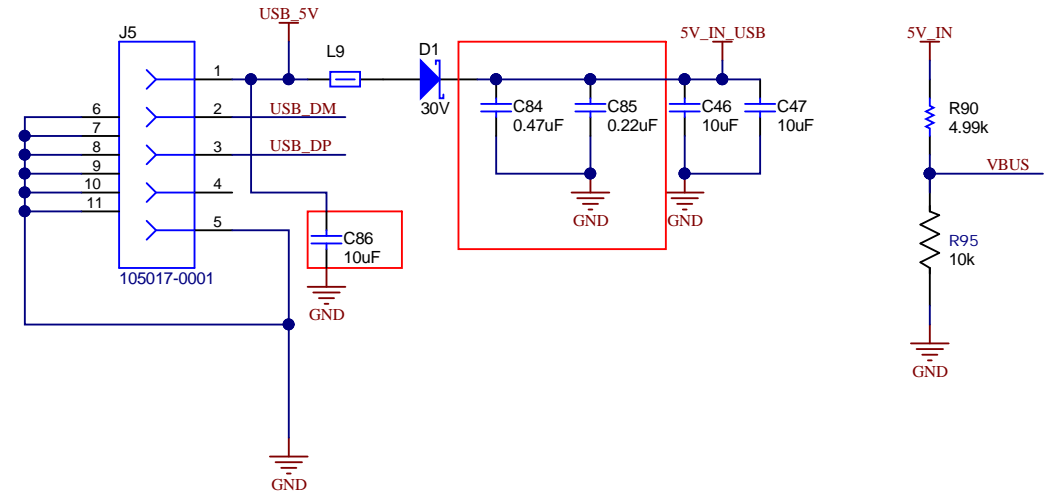
EEPROM



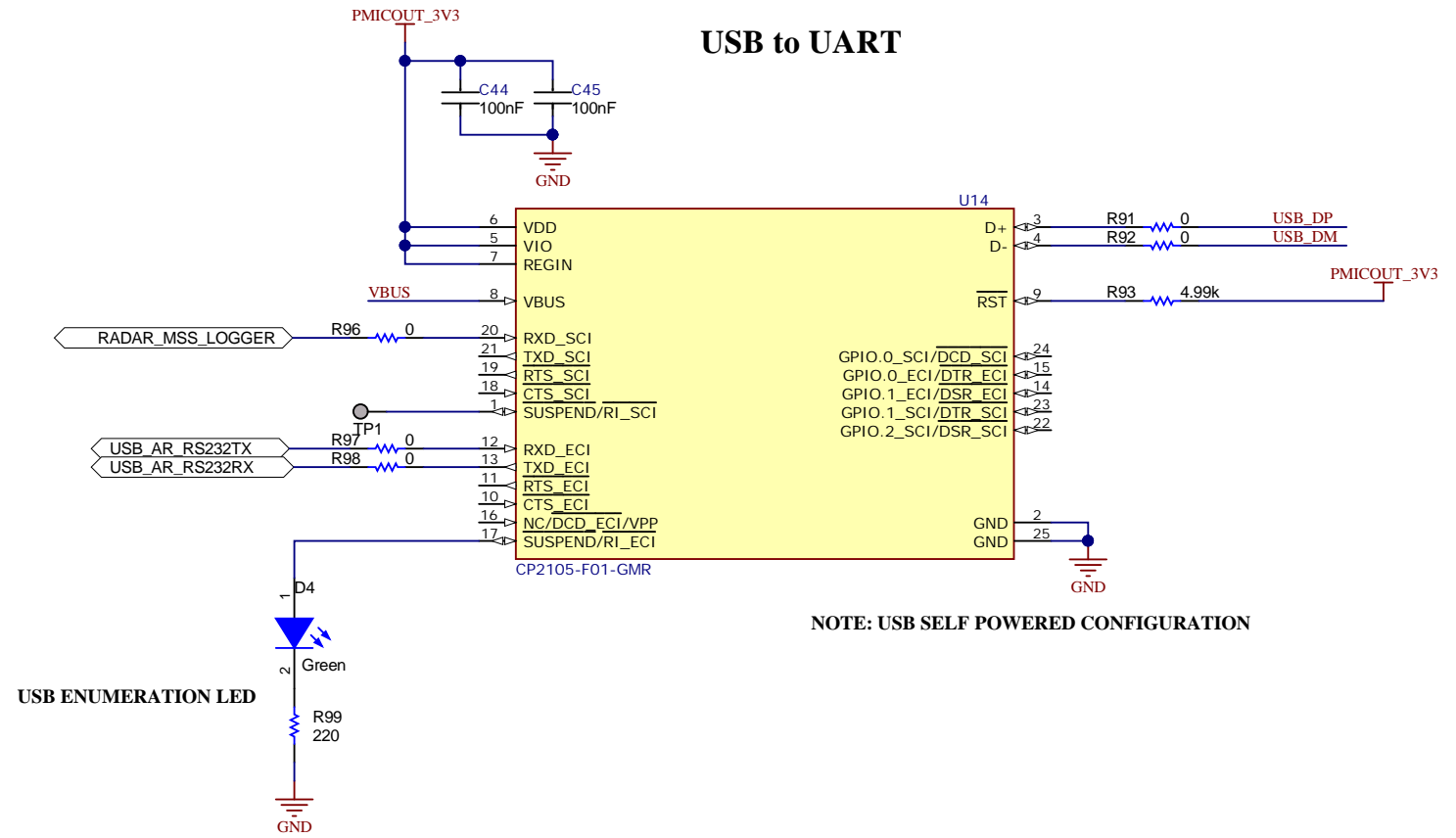
I2C Address : 1010 0XX



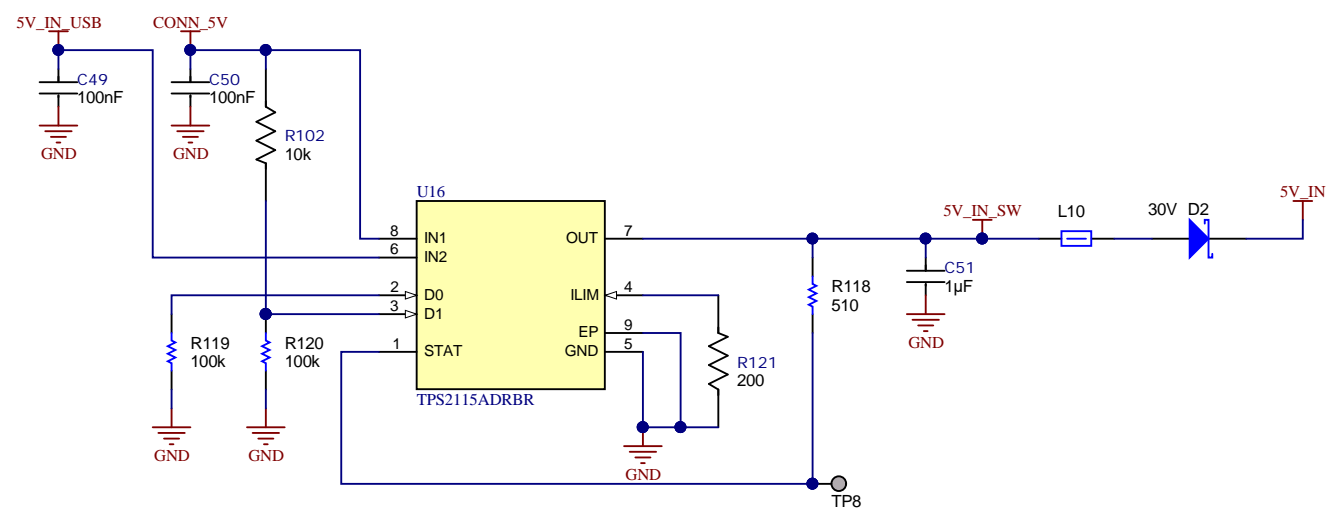
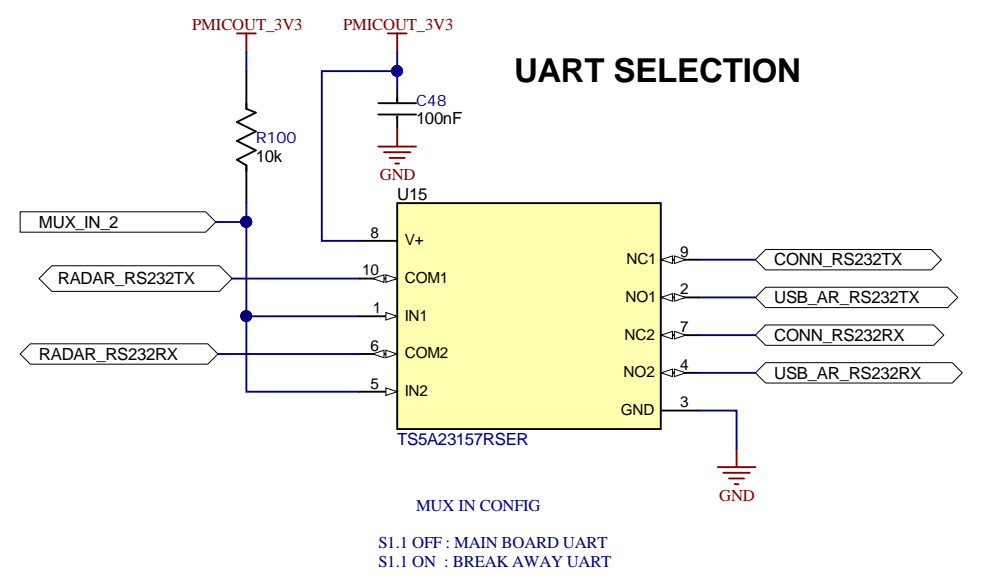
USB CONNECTOR



USB to UART

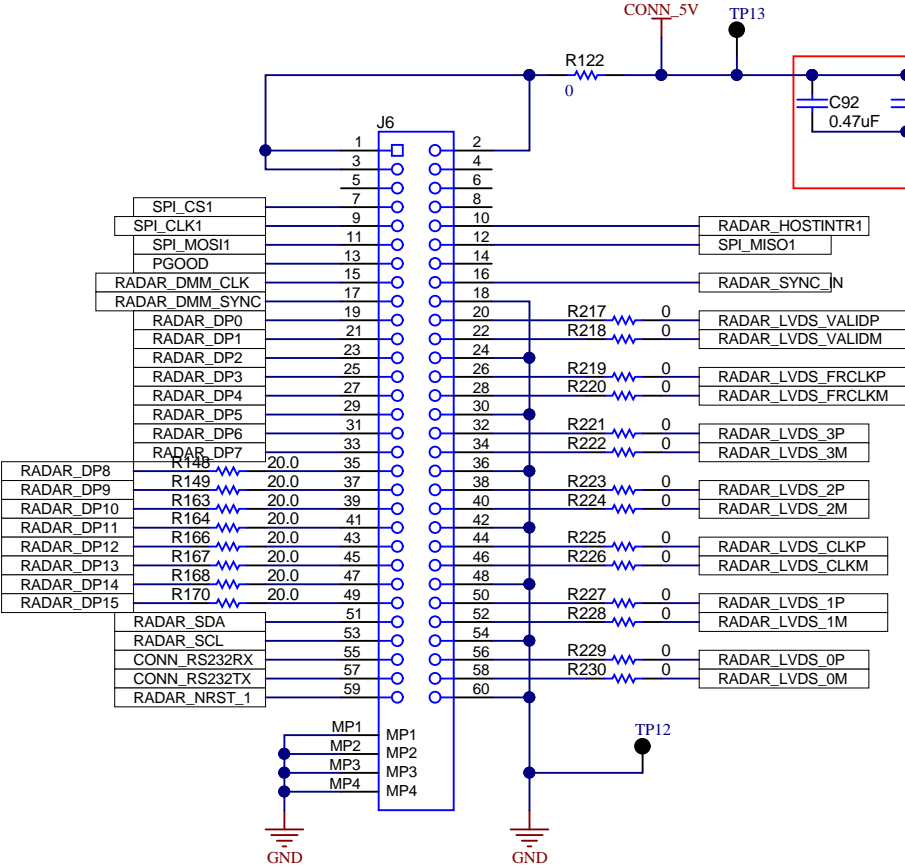


CONNECTOR PWR / USB PWR LOAD SWITCH

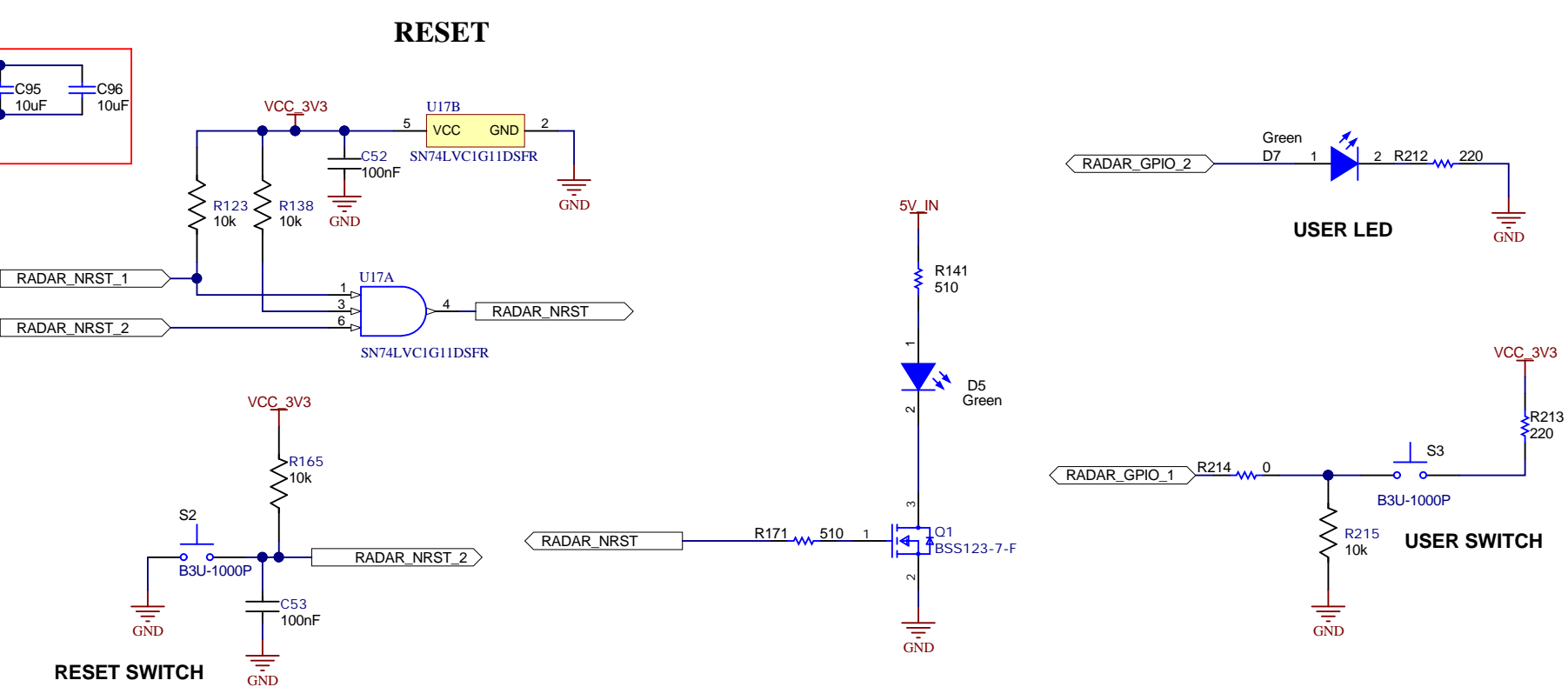


Texas Instruments and/or its licensors do not warrant the accuracy or completeness of this specification or any information contained therein. Texas Instruments and/or its licensors do not warrant that this design will meet the specifications, will be suitable for your application or fit for any particular purpose, or will operate in an implementation. Texas Instruments and/or its licensors do not warrant that the design is production worthy. You should completely validate and test your design implementation to confirm the system functionality for your application.

60PIN HD CONNECTOR FOR DCA1000



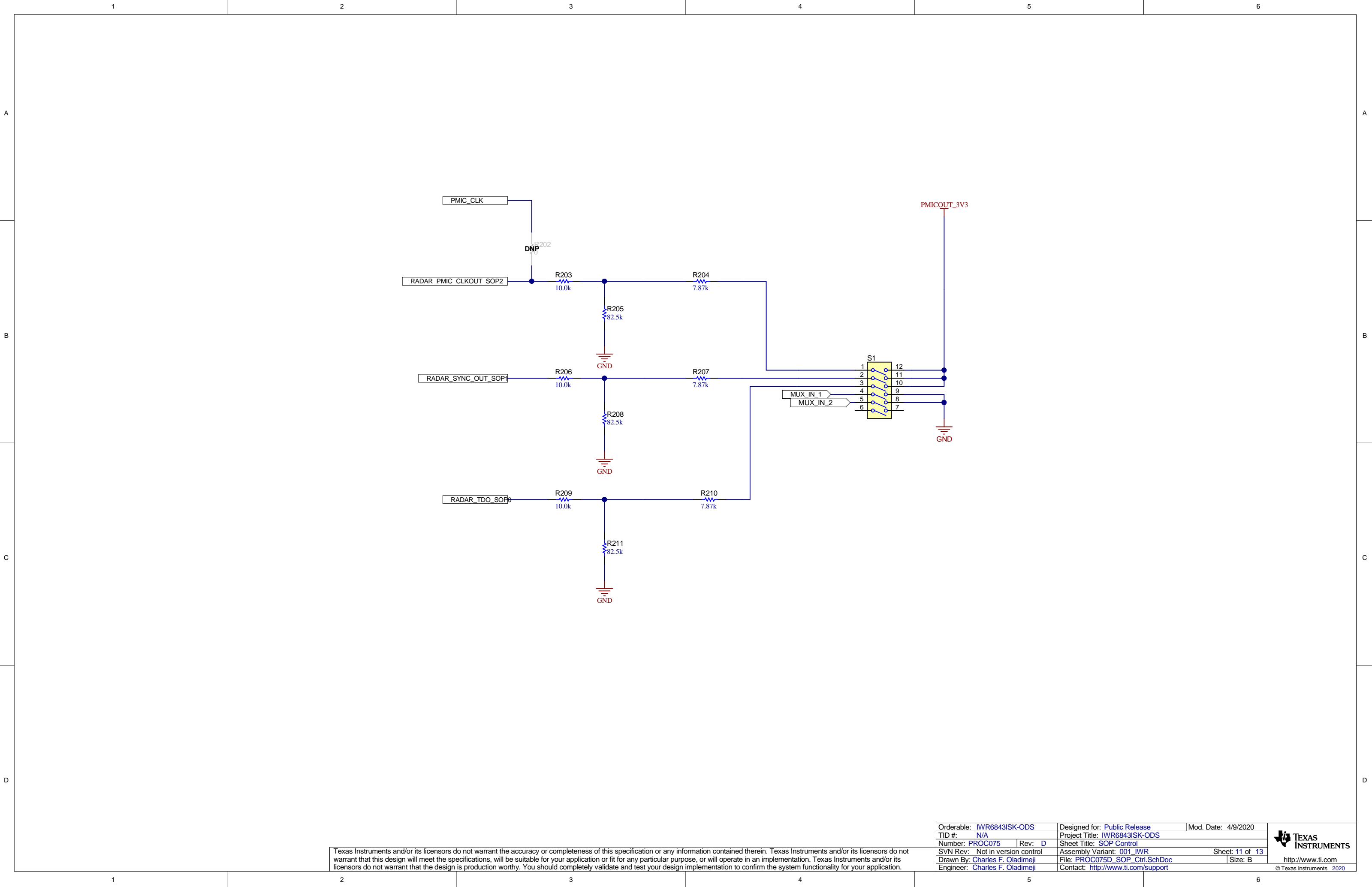
RESET, USER LED and SWITCHES



Texas Instruments and/or its licensors do not warrant the accuracy or completeness of this specification or any information contained therein. Texas Instruments and/or its licensors do not warrant that this design will meet the specifications, will be suitable for your application or fit for any particular purpose, or will operate in an implementation. Texas Instruments and/or its licensors do not warrant that the design is production worthy. You should completely validate and test your design implementation to confirm the system functionality for your application.

Orderable: IWR6843ISK-ODS	Designed for: Public Release	Mod. Date: 6/15/2020
TID #: N/A	Project Title: IWR6843ISK-ODS	
Number: PROC075	Rev: D	Sheet Title: HD DCA Connector
SVN Rev: Not in version control	Assembly Variant: 001_IWR	Sheet: 10 of 13
Drawn By: Charles F. Oladimeji	File: PROC075D_HD_DCA_Conn.SchDoc	Size: B
Engineer: Charles F. Oladimeji	Contact: http://www.ti.com/support	© Texas Instruments 2020





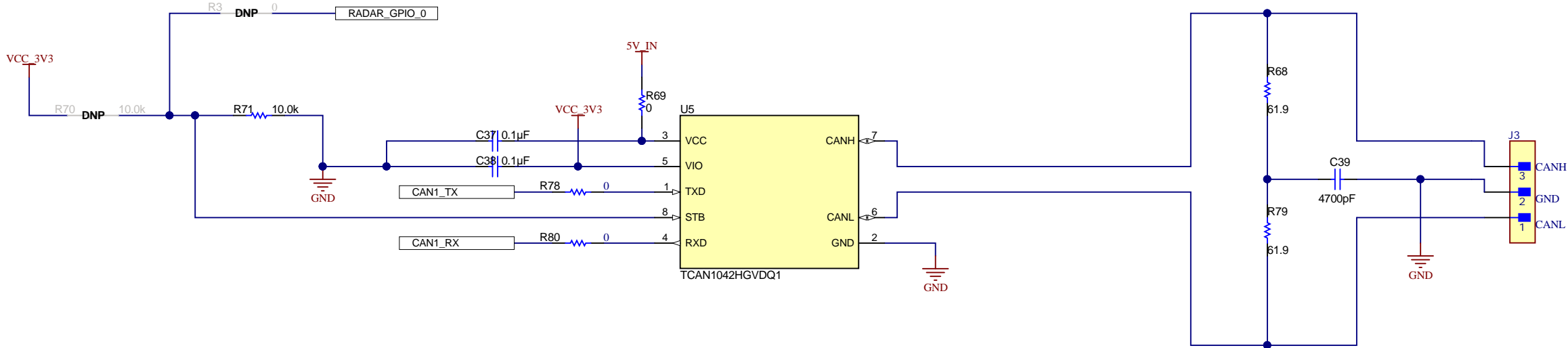
Texas Instruments and/or its licensors do not warrant the accuracy or completeness of this specification or any information contained therein. Texas Instruments and/or its licensors do not warrant that this design will meet the specifications, will be suitable for your application or fit for any particular purpose, or will operate in an implementation. Texas Instruments and/or its licensors do not warrant that the design is production worthy. You should completely validate and test your design implementation to confirm the system functionality for your application.

Orderable: <a href="#">IWR6843ISK-ODS</a>		Designed for: <a href="#">Public Release</a>		Mod. Date: <a href="#">4/9/2020</a>	
TID #: <a href="#">N/A</a>		Project Title: <a href="#">IWR6843ISK-ODS</a>			
Number: <a href="#">PROC075</a>		Rev: <a href="#">D</a>		Sheet Title: <a href="#">SOP Control</a>	
SVN Rev: <a href="#">Not in version control</a>		Assembly Variant: <a href="#">001_IWR</a>		Sheet: <a href="#">11 of 13</a>	
Drawn By: <a href="#">Charles F. Oladimeji</a>		File: <a href="#">PROC075D_SOP_Ctrl.SchDoc</a>		Size: <a href="#">B</a>	
Engineer: <a href="#">Charles F. Oladimeji</a>		Contact: <a href="#">http://www.ti.com/support</a>			

A

A

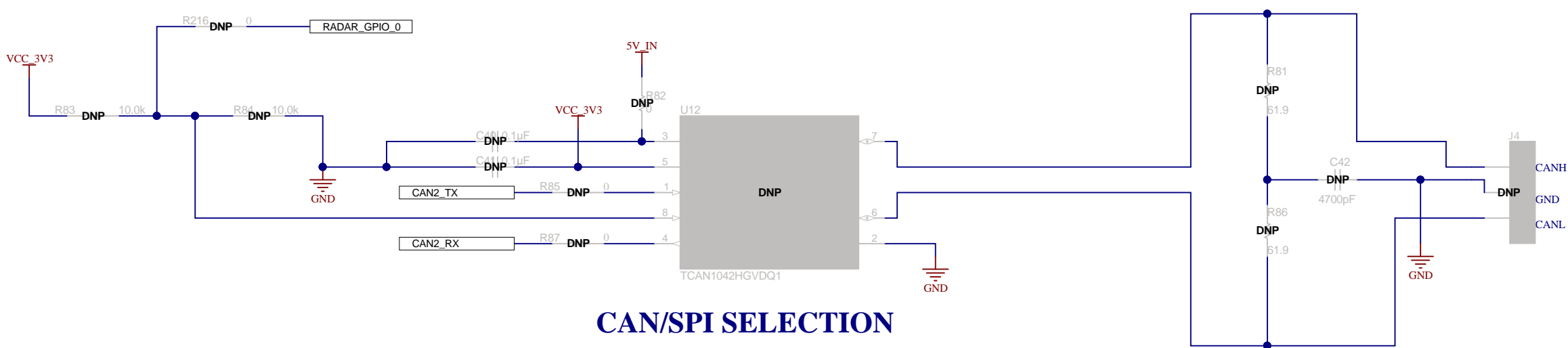
CAN\_FD TRANSCEIVER



B

B

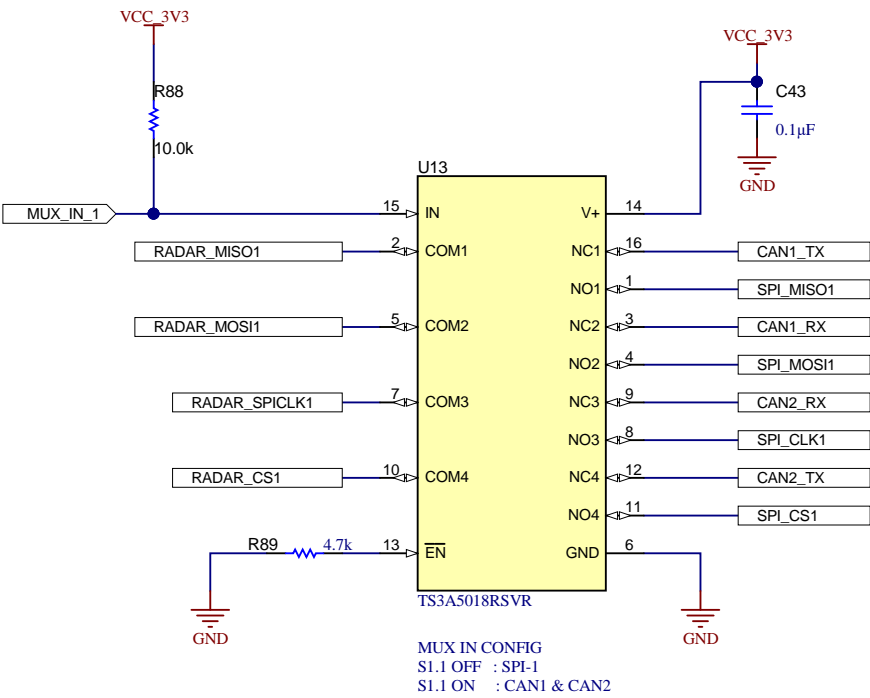
CAN\_FD TRANSCEIVER



C

C

CAN/SPI SELECTION



D

D

Texas Instruments and/or its licensors do not warrant the accuracy or completeness of this specification or any information contained therein. Texas Instruments and/or its licensors do not warrant that this design will meet the specifications, will be suitable for your application or fit for any particular purpose, or will operate in an implementation. Texas Instruments and/or its licensors do not warrant that the design is production worthy. You should completely validate and test your design implementation to confirm the system functionality for your application.

Orderable: IWR6843ISK-ODS	Designed for: Public Release	Mod. Date: 4/9/2020
TID #: N/A	Project Title: IWR6843ISK-ODS	
Number: PROC075	Rev: D	Sheet Title: CAN Interface
SVN Rev: Not in version control	Assembly Variant: 001_IWR	Sheet: 12 of 13
Drawn By: Charles F. Oladimeji	File: PROC075D_Can_Interface.SchDoc	Size: B
Engineer: Charles F. Oladimeji	Contact: http://www.ti.com/support	

