

# ***AN-1994 Modeling and Design of Current Mode Control Boost Converters***

---

## **ABSTRACT**

This application note presents a detail modeling and design of current mode control boost converters operating in the continuous conduction mode (CCM). Based on the derived small signal models, the design of a lag compensator for current mode control boost converters will be detailed. The LM3478 boost controller will be used in the example. Simulation and hardware measurement of frequency responses will be shown.

---

### **Contents**

1	Basic Operation of a Boost Converter .....	2
2	Modeling of an Open Loop Boost Converter .....	2
3	Modeling of a Current Mode Control Boost Converter .....	4
4	Principle of a Lag Compensator .....	6
5	Illustrative Example .....	7
6	Conclusion .....	9

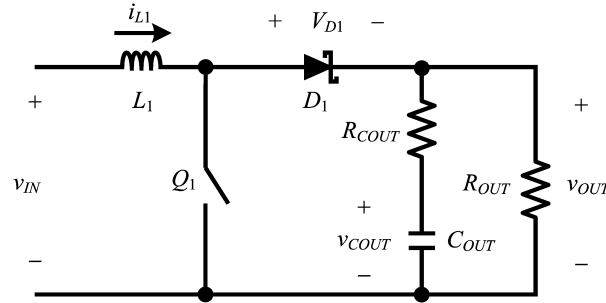
### **List of Figures**

1	An Open Loop Boost Converter.....	2
2	Inductor Current Waveform at the On Period .....	4
3	Frequency Response of a Lag Compensator .....	6
4	A Lag Compensator Implemented by a Transconductance Amplifier Circuit .....	6
5	Frequency Response of the Un-Compensated System .....	8
6	Frequency Response of the Compensated System with 90° Phase Margin.....	9

### **List of Tables**

1	Major Parameters of the Example Boost Converter.....	7
2	Parameters of the LM3478 .....	7

## 1 Basic Operation of a Boost Converter



**Figure 1. An Open Loop Boost Converter**

Figure 1 shows an open loop boost converter with an inductor  $L_1$ , a diode  $D_1$ , an output capacitor  $C_{OUT}$  with an equivalent series resistance  $R_{COUT}$ . It is assumed that the load is a resistor  $R_{OUT}$ , and the switch  $Q_1$  is ideal. Let  $v_{IN}$ ,  $v_{OUT}$ , and  $v_{COUT}$  be the input voltage, output voltage, and the voltage across  $C_{OUT}$ ,  $i_{L1}$  be the current through  $L_1$ , and  $V_{D1}$  be the forward voltage drop of  $D_1$  when  $D_1$  is turned on. Under the CCM, when  $Q_1$  is turned on, the state equations are

$$v_{IN} = L_1 \frac{d}{dt} i_{L1}, \quad (1)$$

$$\frac{v_{OUT}}{R_{OUT}} = -C_{OUT} \frac{d}{dt} v_{COUT} \quad (2)$$

Also, the output equation is

$$v_{OUT} = v_{COUT} + C_{OUT} \frac{d}{dt} v_{COUT} R_{COUT} \quad (3)$$

Similarly, when  $Q_1$  is turned off, the output equation of (3) still holds, while the state equations become

$$v_{IN} = L_1 \frac{d}{dt} i_{L1} + V_{D1} + v_{OUT}, \quad (4)$$

$$\frac{v_{OUT}}{R_{OUT}} = i_{L1} - C_{OUT} \frac{d}{dt} v_{COUT} \quad (5)$$

## 2 Modeling of an Open Loop Boost Converter

To obtain a small signal model of boost converters, it is required to apply the averaging technique, perturbation, and the linearization technique. First, by applying the averaging technique, the averaged state equations and output equation are

$$\bar{v}_{IN} = L_1 \frac{d}{dt} \bar{i}_{L1} + (1 - \bar{d})V_{D1} + (1 - \bar{d})\bar{v}_{OUT}, \quad (6)$$

$$\frac{\bar{v}_{OUT}}{R_{OUT}} = (1 - \bar{d})\bar{i}_{L1} - C_{OUT} \frac{d}{dt} \bar{v}_{COUT}, \quad (7)$$

$$\bar{v}_{OUT} = \bar{v}_{COUT} + R_{COUT}C_{OUT} \frac{d}{dt} \bar{v}_{COUT} \quad (8)$$

where  $\bar{d}$  is the duty cycle,  $\bar{x}$  is the averaged variable for the variable  $x$  (which can represent  $v_{IN}$ ,  $v_{OUT}$ ,  $v_{COUT}$ , and  $i_{L1}$ ).

Second, by applying small signal perturbations to (6) to (8), i.e. let

$$\bar{x} = \bar{X} + \tilde{x},$$

where  $\bar{X}$  and  $\tilde{x}$  are nominal (DC) and perturbed (AC) variables,

$$\bar{v}_{IN} + \tilde{v}_{IN} = L_1 \frac{d}{dt} (\bar{i}_{L1} + \tilde{i}_{L1}) + (1 - \bar{D} - \tilde{d})V_{D1} + (1 - \bar{D} - \tilde{d})(\bar{v}_{OUT} + \tilde{v}_{OUT}), \quad (9)$$

$$\frac{(\bar{V}_{OUT} + \tilde{v}_{OUT})}{R_{OUT}} = (1 - \bar{D} - \tilde{d})(\bar{I}_{L1} + \tilde{i}_{L1}) - C_{OUT} \frac{d}{dt} (\bar{V}_{COUT} + \tilde{v}_{COUT}), \quad (10)$$

$$\bar{V}_{OUT} + \tilde{v}_{OUT} = \bar{V}_{COUT} + \tilde{v}_{COUT} + R_{COUT} C_{OUT} \frac{d}{dt} (\bar{V}_{COUT} + \tilde{v}_{COUT}) \quad (11)$$

Third, by applying the linearization technique (assume that the high order non-linear terms are small and negligible), a set of DC and AC equations can be obtained as follows:

DC equations:

From (9)

$$\begin{aligned} \bar{V}_{IN} &= (1 - \bar{D})V_{D1} + (1 - \bar{D})\bar{V}_{OUT} \\ \bar{D} &= \frac{\bar{V}_{OUT} - \bar{V}_{IN} + V_{D1}}{\bar{V}_{OUT} + V_{D1}} \end{aligned} \quad (12)$$

Also

$$\bar{V}_{OUT} = \frac{\bar{V}_{IN} - (1 - \bar{D})V_{D1}}{(1 - \bar{D})}$$

For simplicity, consider that  $(1 - \bar{D})V_{D1}$  is small compared with  $\bar{V}_{IN}$ ,

$$\bar{V}_{OUT} = \frac{\bar{V}_{IN}}{(1 - \bar{D})} \quad (13)$$

From (10),

$$\bar{I}_{L1} = \frac{\bar{V}_{OUT}}{(1 - \bar{D})R_{OUT}} \quad (14)$$

AC equations:

From (9),

$$\begin{aligned} \tilde{v}_{IN} &= sL_1\tilde{i}_{L1} + (1 - \bar{D})\tilde{v}_{OUT} - \tilde{d}\bar{V}_{OUT} \\ sL_1\tilde{i}_{L1} &= \tilde{v}_{IN} - (1 - \bar{D})\tilde{v}_{OUT} + \tilde{d}\bar{V}_{OUT} \end{aligned} \quad (15)$$

From (10),

$$\frac{\tilde{v}_{OUT}}{R_{OUT}} = (1 - \bar{D})\tilde{i}_{L1} - \tilde{d}\bar{I}_{L1} - sC_{OUT}\tilde{v}_{COUT} \quad (16)$$

From (11),

$$\begin{aligned} \tilde{v}_{OUT} &= \tilde{v}_{COUT} + sR_{COUT}C_{OUT}\tilde{v}_{COUT}, \\ \tilde{v}_{COUT} &= \frac{\tilde{v}_{OUT}}{1 + sR_{COUT}C_{OUT}}, \end{aligned} \quad (17)$$

Substitute (13), (14), (15), and (17) into (16),

$$\tilde{v}_{OUT} = \frac{\frac{(1 + sR_{COUT}C_{OUT})\tilde{v}_{IN}}{(1 - \bar{D})} + \frac{(1 + sR_{COUT}C_{OUT})\bar{V}_{IN}}{(1 - \bar{D})^2} \left[ 1 - \frac{sL_1}{R_{OUT}(1 - \bar{D})^2} \right] \tilde{d}}{1 + s \left[ \frac{L_1}{R_{OUT}(1 - \bar{D})^2} + R_{COUT}C_{OUT} \right] + s^2 \frac{L_1C_{OUT}(R_{OUT} + R_{COUT})}{R_{OUT}(1 - \bar{D})^2}} \quad (18)$$

### 3 Modeling of a Current Mode Control Boost Converter

Under current mode control,  $i_{L1}$  is fed back when  $Q_1$  is turned on to determine the on-time of  $Q_1$  by comparing it to a current control signal  $i_c$ . A compensation ramp of slope  $-m_c$  is normally added to avoid sub-harmonic oscillation. Figure 2 shows the current waveform of an on period. The averaged state equation is as follows:

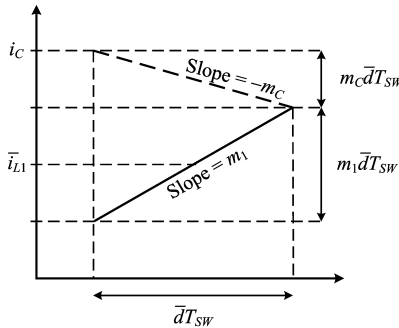


Figure 2. Inductor Current Waveform at the On Period

$$\bar{i}_{L1} = i_c - m_c \bar{d} T_{SW} - \frac{m_1}{2} \bar{d} T_{SW}, \quad (19)$$

where

$$m_1 = \frac{v_{IN}}{L_1} \quad (20)$$

is the slope of  $i_{L1}$  during the on period. By adding small signal perturbations to the above equation,

$$\bar{i}_{L1} + \tilde{i}_{L1} = \bar{i}_c + \tilde{i}_c - m_c (\bar{D} + \tilde{d}) T_{SW} - \frac{T_{SW}}{2} (\bar{M}_1 + \tilde{m}_1) (\bar{D} + \tilde{d}). \quad (21)$$

By applying the linearization technique (assume that the high order non-linear terms are small and negligible), a set of DC and AC equations can be obtained as follows:

DC equation:

$$\bar{i}_{L1} = \bar{i}_c - m_c \bar{D} T_{SW} - \frac{T_{SW}}{2} \bar{M}_1 \bar{D} \quad (22)$$

where

$$\bar{M}_1 = \frac{\bar{V}_{IN}}{L_1}$$

AC equation:

$$\tilde{i}_{L1} = \tilde{i}_c - m_c T_{SW} \tilde{d} - \frac{T_{SW}}{2} \bar{M}_1 \tilde{d} - \frac{T_{SW}}{2} \bar{D} \tilde{m}_1 \quad (23)$$

Define

$$T_2 = \frac{T_{SW}}{2}, \quad (24)$$

$$T_M = \frac{T_{SW}}{2} (2m_c + \bar{M}_1) \quad (25)$$

From (20), (23), (24), (25),

$$\tilde{i}_{L1} = \tilde{i}_c - T_M \tilde{d} - \bar{D} T_2 \frac{\tilde{V}_{IN}}{L_1}. \quad (26)$$

Substitute (13) into (15),

$$sL_1 \tilde{i}_{L1} = \tilde{v}_{IN} - (1 - \bar{D}) \tilde{v}_{OUT} + \tilde{d} \frac{\bar{V}_{IN}}{(1 - \bar{D})}. \quad (27)$$

Substitute (27) into (26),

$$\tilde{d} = \frac{sL_1\tilde{i}_C + (1 - \bar{D})\tilde{v}_{OUT} - \left(1 + \frac{sL_1\bar{D}T_2}{L_1}\right)\tilde{v}_{IN}}{\left[\frac{\tilde{v}_{IN}}{(1 - \bar{D})} + sL_1T_M\right]} \quad (28)$$

By substituting (28) into (18), the small signal model of the current mode control boost converter can be formulated as follows:

$$\tilde{v}_{OUT} = \frac{G_{NC}(s)\tilde{v}_{IN} + G_{IC}(s)\tilde{i}_C}{\Delta(s)} \quad (29)$$

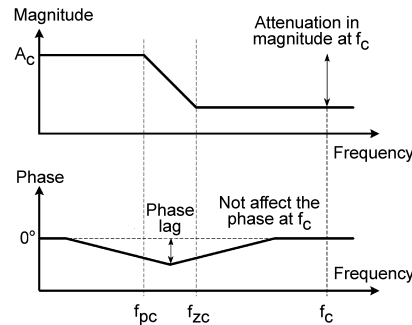
where

$$\begin{aligned} G_{NC}(s) &= R_{OUT}(1 - \bar{D})(1 + sR_{COUT}C_{OUT}) \\ &\quad \left\{ \frac{(1 - \bar{D})T_M}{\tilde{v}_{IN}} + \frac{1}{R_{OUT}(1 - \bar{D})^2} - \frac{\bar{D}T_2}{L_1} + \frac{s\bar{D}T_2}{R_{OUT}(1 - \bar{D})^2} \right\} \\ G_{IC}(s) &= R_{OUT}(1 - \bar{D})(1 + sR_{COUT}C_{OUT}) \left[ 1 - s\frac{L_1}{R_{OUT}(1 - \bar{D})^2} \right] \\ \Delta(s) &= 2 + R_{OUT}(1 - \bar{D})^2T_M\frac{(1 - \bar{D})}{\tilde{v}_{IN}} \\ &\quad + s \left\{ \left[ L_1 + R_{COUT}R_{OUT}C_{OUT}(1 - \bar{D})^2 \right] T_M\frac{(1 - \bar{D})}{\tilde{v}_{IN}} + (R_{OUT} + 2R_{COUT})C_{OUT} \right\} \\ &\quad + s^2 \left[ L_1C_{OUT}(R_{OUT} + R_{COUT})T_M\frac{(1 - \bar{D})}{\tilde{v}_{IN}} \right] \end{aligned}$$

If the current  $i_{L1}$  is sensed by a resistor  $R_{SN}$  connecting between  $Q_1$  and the ground, the current control signal  $i_C$  can be converted to a voltage control signal  $v_C$ . The relationship between the output voltage and the voltage control signal can be formulated as follows:

$$\tilde{v}_{OUT} = \frac{G_{IC}(s)}{\Delta(s)R_{SN}}\tilde{v}_C \quad (30)$$

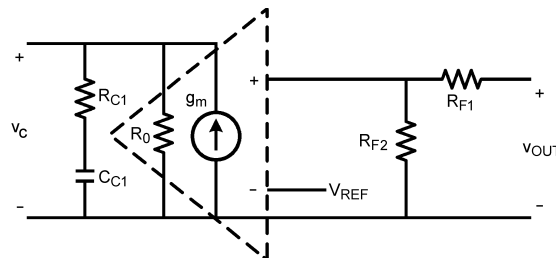
## 4 Principle of a Lag Compensator



**Figure 3. Frequency Response of a Lag Compensator**

A lag compensator consists of a pair of pole and zero at the frequency  $f_{PC}$  and  $f_{ZC}$ , with  $f_{PC} < f_{ZC}$ . It also provides a dc gain  $A_C$ . As shown in Figure 3, the lag compensator provides an attenuation in magnitude at the high frequency. The degree of attenuation is determined by the distance between  $f_{PC}$  and  $f_{ZC}$ . It is because the magnitude is decreased at a slope of 20dB/decade between  $f_{PC}$  and  $f_{ZC}$ . The lag compensator also provides a phase lag. However,  $f_{PC}$  and  $f_{ZC}$  can be placed at a low frequency (much lower than the frequency of interest, for example, the cross over frequency  $f_C$ ) such that the lag compensator nearly does not affect the phase at the high frequency.

The aim of designing a lag compensator is to provide a desired phase margin for the compensated system. Starting from a bode plot of an un-compensated system, and a requirement of phase margin of  $\Phi_m$ , a new  $f_C$  can be selected at the frequency corresponding to  $180^\circ - \Phi_m$  of the un-compensated system. Then the magnitude of the un-compensated system at  $f_C$  is found. The magnitude at  $f_C$  can be attenuated to 0dB by the lag compensator through proper design of  $f_{PC}$  and  $f_{ZC}$ . As a result, the compensated system will have a phase margin of  $\Phi_m$ , and the cross over frequency will be  $f_C$ . An illustrative example (see Section 5) will be presented to show the design steps.



**Figure 4. A Lag Compensator Implemented by a Transconductance Amplifier Circuit**

A lag compensator can be implemented by a transconductance amplifier, with an open loop gain of  $g_m$  and an output impedance of  $R_0$ , connecting to a resistor  $R_{C1}$  and a capacitor  $C_{C1}$  in series to the ground, as shown in Figure 4. Let the negative input of the amplifier is connected to a reference voltage  $V_{REF}$ , and the positive input is connected to the output voltage  $v_{OUT}$  through a resistor divider network implemented by  $R_{F1}$  and  $R_{F2}$ , the transfer function relating  $v_C$  and  $v_{OUT}$  is

$$v_C = \left( \frac{R_{F2}}{R_{F1} + R_{F2}} v_{OUT} - V_{REF} \right) g_m \left[ R_0 \parallel \left( R_{C1} + \frac{1}{sC_{C1}} \right) \right] \quad (31)$$

By adding small signal perturbations, the AC equation can be obtained as follows:

$$\tilde{v}_C = \frac{R_{F2}}{R_{F1} + R_{F2}} g_m R_0 \frac{1 + sR_{C1}C_{C1}}{1 + s(R_{C1} + R_0)C_{C1}} \tilde{v}_{OUT} \quad (32)$$

Hence,

$$\begin{aligned}
 A_C &= \frac{R_{F2}}{R_{F1} + R_{F2}} g_m R_0, \\
 f_{PC} &= \frac{1}{2\pi(R_{C1} + R_0)C_{C1}}, \\
 f_{ZC} &= \frac{1}{2\pi R_{C1} C_{C1}}.
 \end{aligned}
 \tag{33}$$

## 5 Illustrative Example

The design of a current mode control Boost converter with a nominal input voltage of 5V and an output voltage of 12V and an output current of 0.5A will be shown. The major components are listed in [Table 1](#). A current mode controller LM3478 will be used. The parameters of the LM3478, which can be derived from the data sheet, are also listed in [Table 2](#).

**Table 1. Major Parameters of the Example Boost Converter**

Parameter	Value
$\bar{V}_{IN}$	5V
$\bar{V}_{OUT}$	12V
$R_{OUT}$	24Ω
$L_1$	10 μH
$C_{OUT}$	150 μF
$R_{COUT}$	0.05Ω
$f_{SW}$	400 kHz
$R_{SN}$	0.05Ω
$R_{SL}$	604Ω

**Table 2. Parameters of the LM3478**

Parameter	Value
$V_{REF}$	1.26V
$g_m$	800 μΩ <sup>-1</sup>
$R_0$	$A_v/g_m = 38/800 \mu\Omega^{-1} = 47.5 \text{ k}\Omega$
$V_{SL}$	92 mV

Other parameters of (30) are calculated below.

From (13),

$$\bar{D} = 0.5833$$

From (24),

$$T_2 = \frac{T_{SW}}{2} = \frac{1}{2f_{SW}} \tag{34}$$

$$T_2 = 1.25 \mu\text{s} \tag{35}$$

The parameter  $m_C$  is determined by an internal compensation ramp  $V_{SL}$  and an external compensation ramp determined by an internal current of 40 μA passing through an external resistor  $R_{SL}$ . It can be calculated by the following equation:

$$m_C = (V_{SL} + 40 \mu\text{A} \times R_{SL})f_{SW}/R_{SN} = 929280\text{As}^{-1} \tag{36}$$

From (25),

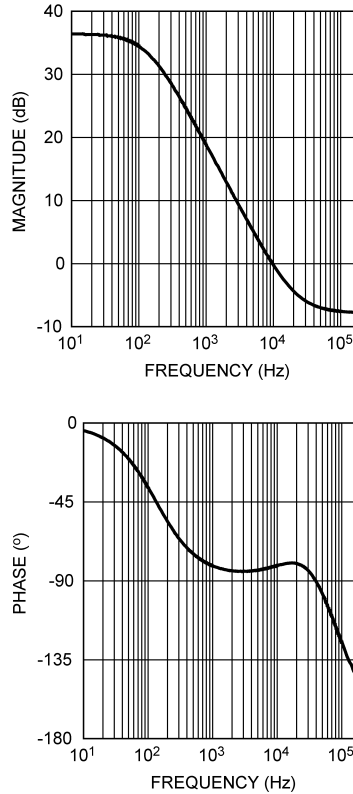
$$\begin{aligned}
 T_M &= \frac{T_{SW}}{2} \left( 2m_C + \frac{\bar{V}_{IN}}{L_1} \right) \\
 &= 2.9482\mu\text{s}
 \end{aligned}
 \tag{37}$$

Hence, all parameters of (30) are obtained. A bode plot of (30) with the above parameters is shown in Figure 5. The DC gain, zeros, and poles are

$$\text{DC gain: } 36.39\text{dB} \tag{38}$$

$$\text{Zeros: } 53 \text{ kHz, } 66 \text{ kHz (right half plane zero)} \tag{39}$$

$$\text{Poles: } 133 \text{ Hz, } 65 \text{ kHz} \tag{40}$$



**Figure 5. Frequency Response of the Un-Compensated System**

The design of the lag compensator can be achieved by following (32). Since  $\bar{V}_{OUT}$  and  $V_{REF}$  are 12V and 1.26V respectively, we can design that

$$R_{F1} = 84.5 \text{ k}\Omega \tag{41}$$

$$R_{F2} = 10 \text{ k}\Omega \tag{42}$$

From (32),

$$\begin{aligned} A_C &= \frac{R_{F2}}{R_{F1} + R_{F2}} g_m R_0 \\ &= 4.02 \\ &= 12.09 \text{ dB} \end{aligned} \tag{43}$$

In this example, a compensated system with a phase margin of around 90° is desired. From Figure 5,  $f_C$  can be selected as 3.5kHz (the frequency at which the phase is around  $180^\circ - 90^\circ = 90^\circ$ ). The attenuation required is  $7\text{dB} + A_C = 19.09\text{dB}$ , which implies that the distance between  $f_{PC}$  and  $f_{ZC}$  should be 0.96 decade. Select  $f_{ZC}$  to be 350 Hz, i.e. one decade lower than  $f_C$ , then  $f_{PC}$  should be 38.3 Hz.

$$1/R_{C1}C_{C1} = 2\pi \times 350 \text{ Hz} \tag{44}$$

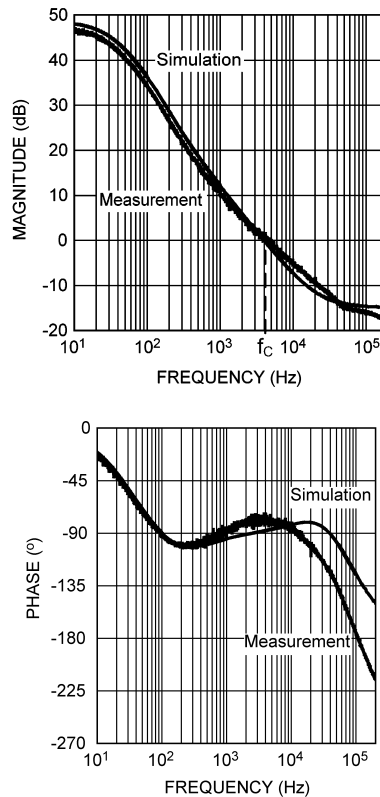
$$\frac{1}{(R_{C1} + R_0)C_{C1}} = 2\pi \times 38.3 \text{ Hz}$$

$$R_0C_{C1} = \frac{1}{2\pi \times 38.3 \text{ Hz}} - R_1C_{C1}$$

$$C_{C1} = 78 \text{ nF}$$

$$R_{C1} = 5.85 \text{ k}\Omega \tag{45}$$





**Figure 6. Frequency Response of the Compensated System with 90° Phase Margin**

Finally, select  $R_{C1} = 5.9 \text{ k}\Omega$  and  $C_{C1} = 100 \text{ nF}$ . The frequency response of the compensated system is shown in [Figure 6](#). It can be found that the 0dB point is at around 4 kHz, and the phase margin is around 95°.

## 6 Conclusion

This application note details the modeling of an open loop and a current mode control boost converter under the continuous conduction mode. The principle and design of a lag compensator have also been addressed. An example has been presented to illustrate the design. A lag compensator has been designed for a compensated system with around 90° phase margin.

The selection of a desired phase margin affects the transient response of the output voltage. Moreover, some practical systems suffered from noise, and transient responses are not a major concern. A lower cross over frequency may be required. In this case, the application of the dominant pole compensation method may be more appropriate. The lag compensator can be easily changed to a compensator with a dominant pole by setting  $R_{C1}$  to zero, that is, to eliminate the zero. Application engineers are suggested to design properly based on practical situations.

## IMPORTANT NOTICE

Texas Instruments Incorporated and its subsidiaries (TI) reserve the right to make corrections, enhancements, improvements and other changes to its semiconductor products and services per JESD46, latest issue, and to discontinue any product or service per JESD48, latest issue. Buyers should obtain the latest relevant information before placing orders and should verify that such information is current and complete. All semiconductor products (also referred to herein as "components") are sold subject to TI's terms and conditions of sale supplied at the time of order acknowledgment.

TI warrants performance of its components to the specifications applicable at the time of sale, in accordance with the warranty in TI's terms and conditions of sale of semiconductor products. Testing and other quality control techniques are used to the extent TI deems necessary to support this warranty. Except where mandated by applicable law, testing of all parameters of each component is not necessarily performed.

TI assumes no liability for applications assistance or the design of Buyers' products. Buyers are responsible for their products and applications using TI components. To minimize the risks associated with Buyers' products and applications, Buyers should provide adequate design and operating safeguards.

TI does not warrant or represent that any license, either express or implied, is granted under any patent right, copyright, mask work right, or other intellectual property right relating to any combination, machine, or process in which TI components or services are used. Information published by TI regarding third-party products or services does not constitute a license to use such products or services or a warranty or endorsement thereof. Use of such information may require a license from a third party under the patents or other intellectual property of the third party, or a license from TI under the patents or other intellectual property of TI.

Reproduction of significant portions of TI information in TI data books or data sheets is permissible only if reproduction is without alteration and is accompanied by all associated warranties, conditions, limitations, and notices. TI is not responsible or liable for such altered documentation. Information of third parties may be subject to additional restrictions.

Resale of TI components or services with statements different from or beyond the parameters stated by TI for that component or service voids all express and any implied warranties for the associated TI component or service and is an unfair and deceptive business practice. TI is not responsible or liable for any such statements.

Buyer acknowledges and agrees that it is solely responsible for compliance with all legal, regulatory and safety-related requirements concerning its products, and any use of TI components in its applications, notwithstanding any applications-related information or support that may be provided by TI. Buyer represents and agrees that it has all the necessary expertise to create and implement safeguards which anticipate dangerous consequences of failures, monitor failures and their consequences, lessen the likelihood of failures that might cause harm and take appropriate remedial actions. Buyer will fully indemnify TI and its representatives against any damages arising out of the use of any TI components in safety-critical applications.

In some cases, TI components may be promoted specifically to facilitate safety-related applications. With such components, TI's goal is to help enable customers to design and create their own end-product solutions that meet applicable functional safety standards and requirements. Nonetheless, such components are subject to these terms.

No TI components are authorized for use in FDA Class III (or similar life-critical medical equipment) unless authorized officers of the parties have executed a special agreement specifically governing such use.

Only those TI components which TI has specifically designated as military grade or "enhanced plastic" are designed and intended for use in military/aerospace applications or environments. Buyer acknowledges and agrees that any military or aerospace use of TI components which have **not** been so designated is solely at the Buyer's risk, and that Buyer is solely responsible for compliance with all legal and regulatory requirements in connection with such use.

TI has specifically designated certain components as meeting ISO/TS16949 requirements, mainly for automotive use. In any case of use of non-designated products, TI will not be responsible for any failure to meet ISO/TS16949.

### Products

Audio	<a href="http://www.ti.com/audio">www.ti.com/audio</a>
Amplifiers	<a href="http://amplifier.ti.com">amplifier.ti.com</a>
Data Converters	<a href="http://dataconverter.ti.com">dataconverter.ti.com</a>
DLP® Products	<a href="http://www.dlp.com">www.dlp.com</a>
DSP	<a href="http://dsp.ti.com">dsp.ti.com</a>
Clocks and Timers	<a href="http://www.ti.com/clocks">www.ti.com/clocks</a>
Interface	<a href="http://interface.ti.com">interface.ti.com</a>
Logic	<a href="http://logic.ti.com">logic.ti.com</a>
Power Mgmt	<a href="http://power.ti.com">power.ti.com</a>
Microcontrollers	<a href="http://microcontroller.ti.com">microcontroller.ti.com</a>
RFID	<a href="http://www.ti-rfid.com">www.ti-rfid.com</a>
OMAP Applications Processors	<a href="http://www.ti.com/omap">www.ti.com/omap</a>
Wireless Connectivity	<a href="http://www.ti.com/wirelessconnectivity">www.ti.com/wirelessconnectivity</a>

### Applications

Automotive and Transportation	<a href="http://www.ti.com/automotive">www.ti.com/automotive</a>
Communications and Telecom	<a href="http://www.ti.com/communications">www.ti.com/communications</a>
Computers and Peripherals	<a href="http://www.ti.com/computers">www.ti.com/computers</a>
Consumer Electronics	<a href="http://www.ti.com/consumer-apps">www.ti.com/consumer-apps</a>
Energy and Lighting	<a href="http://www.ti.com/energy">www.ti.com/energy</a>
Industrial	<a href="http://www.ti.com/industrial">www.ti.com/industrial</a>
Medical	<a href="http://www.ti.com/medical">www.ti.com/medical</a>
Security	<a href="http://www.ti.com/security">www.ti.com/security</a>
Space, Avionics and Defense	<a href="http://www.ti.com/space-avionics-defense">www.ti.com/space-avionics-defense</a>
Video and Imaging	<a href="http://www.ti.com/video">www.ti.com/video</a>

### TI E2E Community

[e2e.ti.com](http://e2e.ti.com)