

Murata Balun for CC253x and CC254x LFB182G45BG2D280

By Fredrik Kervel

Keywords

- Balun
- LFB182G45BG2D280
- CC253x
- CC254x
- CC257x
- CC85xx

1 Introduction

Murata's LFB182G45BG2D280 integrated balun is specially designed for use with Texas Instruments' CC253x, CC254x, CC257x and CC85xx devices. This balun greatly simplifies the RF frontend by reducing required board space and also reduces possible design errors to a minimum. Additionally the balun has integrated filter components which greatly reduces harmonic radiation.

The LFB182G45BG2D280 is a six pin device with mechanical dimensions of only 1.6 mm x 0.8 mm (EIA 0603). The balun replaces 9 discrete 0402 components in the recommended discrete balun / filter design.

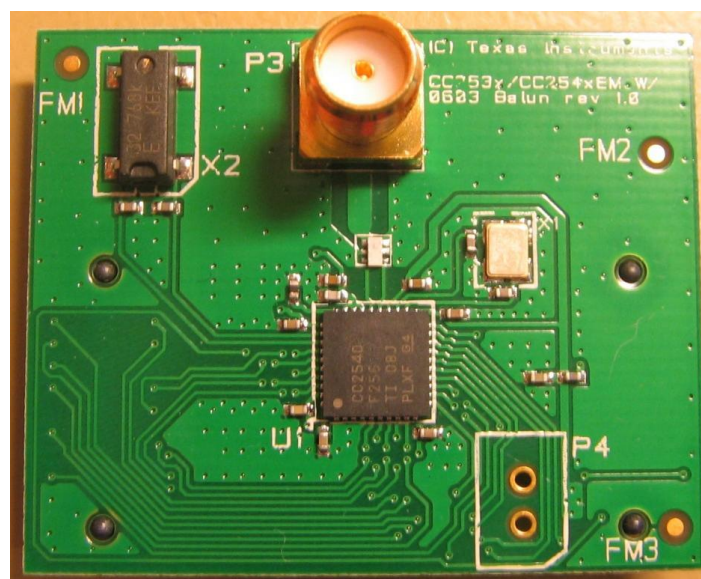


Table of Contents

KEYWORDS.....	1
1 INTRODUCTION.....	1
2 ABBREVIATIONS.....	2
3 DESCRIPTION OF THE REFERENCE DESIGN	3
4 MEASUREMENT RESULTS	5
5 BALUN SPECIFICATIONS.....	7
6 REFERENCES.....	9
7 GENERAL INFORMATION	9
7.1 DOCUMENT HISTORY	9

2 Abbreviations

EM	Evaluation module
ISM	Industrial, Scientific, Medical
TI	Texas Instruments

3 Description of the Reference Design

The traditional reference design for the CC253x and CC254x is shown in Figure 1. Murata has developed a single component which replaces all the discrete components needed for the balun and low pass filter.

As can be seen in Figure 2, the Murata design is much simpler than the discrete. As RF design is not straight forward this will also reduce the risk of any errors done in the board layout.

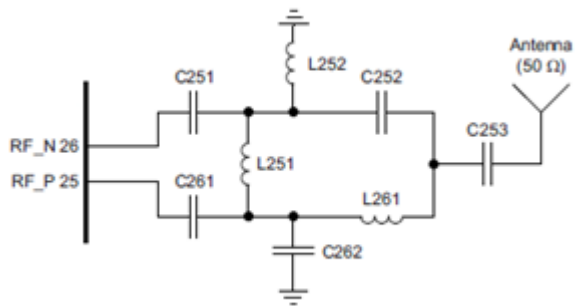
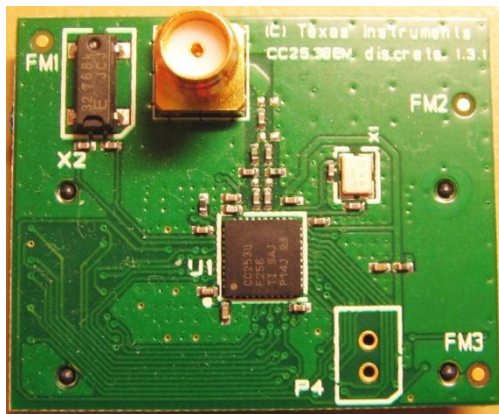


Figure 1, Discrete reference design

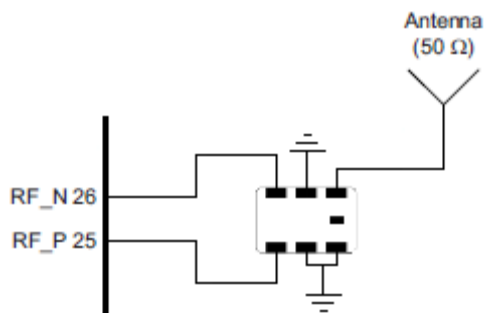
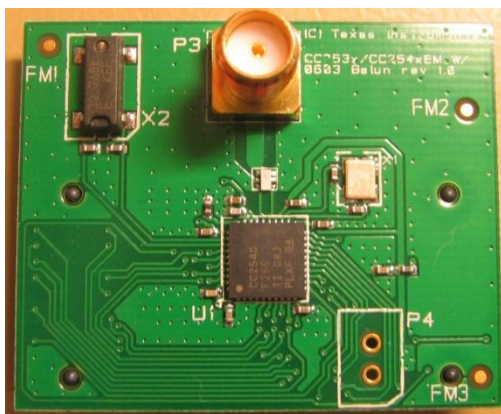


Figure 2, Murata Balun reference design

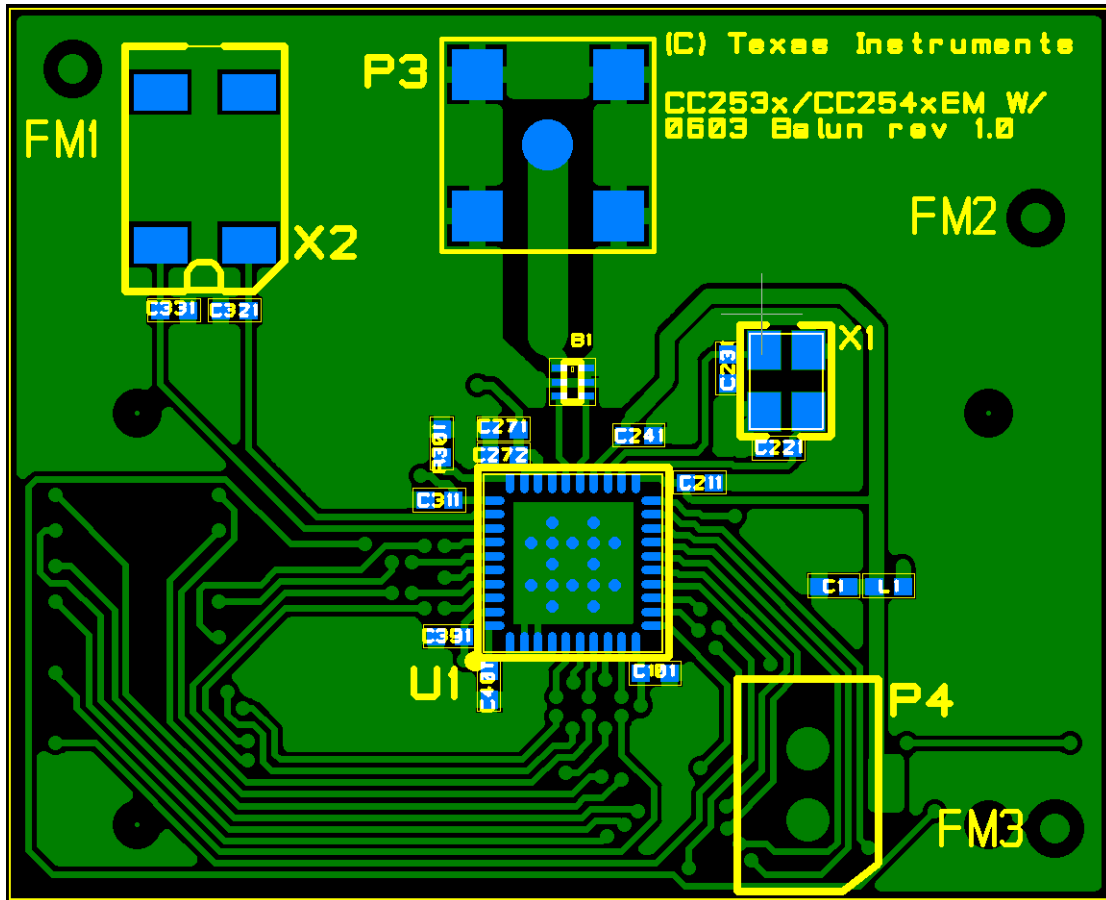


Figure 3, TI evaluation board for LFB182G45BG2D280

In **Figure 3** the layout out TI's evaluation board for LFB182G45BG2D280 can be seen. This figure clearly emphasizes the compact size of the balun and also the simplicity of its required design/layout.

Application Note AN107

4 Measurement Results

All results presented in this chapter are based on measurements performed with TI's evaluation board for LFB182G45BG2D280, as shown in **Figure 3**, with the CC2530. All measurement results are the average of several typical devices. Comparative values are from the CC2530EM reference design with the discrete balun.

As can be seen from the results LFB182G45BG2D280 offers improved performance on harmonic radiation, thus increasing margins to FCC/ETSI compliance limits.

Table 1, Measurement Results

		CC2530 discrete Ref. des.	CC2530 w/Murata Balun	
Receiver sensitivity	PER =1% as specified by [1] [1] requires -85dB	-97	-96,1	dBm
Output Power (0xF5)	Delivered to a single ended 50Ω load through a balun using max recommended output setting (0xF5) [1] requires minimum -3dBm	4,5	3,1	dBm
Spurious Emission	25MHz-1000MHz (outside restricted bands)	-60	-71.6	dBm
	25MHz-2400MHz (within FCC restricted bands)	-60	-71.7	dBm
	25MHz-1000MHz (within ETSI restricted bands)	-60	-71.6	dBm
	1800-1900MHz (ETSI restricted band)	-57	-67,7	dBm
	5150-5300MHz (ETSI restricted band)	-55	-66,1	dBm
	At 2xfc and 3xfc (FCC restricted band)	-42	-62,7	dBm
	At 2xfc and 3xfc (ETSI EN 300-440 and EN300-328)	-31	-51,6	dBm
	At 2483.5MHz and above (FCC restr. bands) fc=2480MHz	-42	-58,5	dBm
EVM	Measured as defined by [1] using maximum recommended output power setting [1] Requires maximum 35 %	2	2	%

Application Note AN107

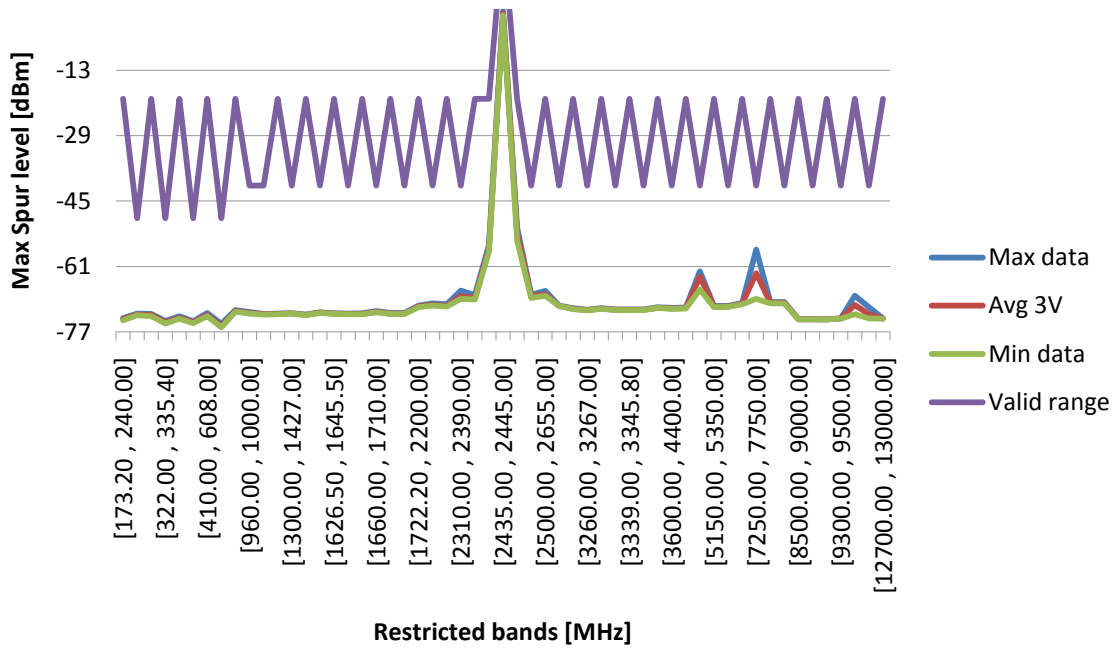


Figure 4, Spurious Emission (FCC)

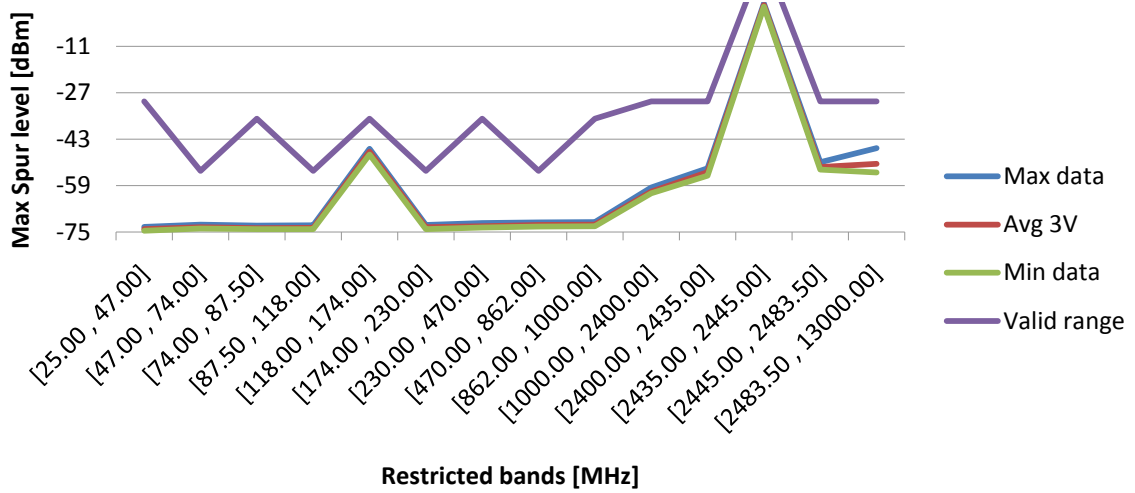


Figure 5, Spurious Emission (ETSI EN 300-440)

5 Balun Specifications

Table 2, Murata Datasheet Values

Part Number	LFB182G45BG2D280
Unbalanced Port Impedance	50 Ω
Balanced Port Impedance	Conjugate match to TI CC253x, CC254x
Frequency Range	2450.00 \pm 50 MHz
Insertion Loss in BW	1.75 dB typ at 25 $^{\circ}$ C
Attenuation (Absolute value)	20 dB min. at 4800.00 ~ 5000.00 MHz 20 dB min. at 7200.00 ~ 7500.00 MHz
Power Capacity	500 mW max.

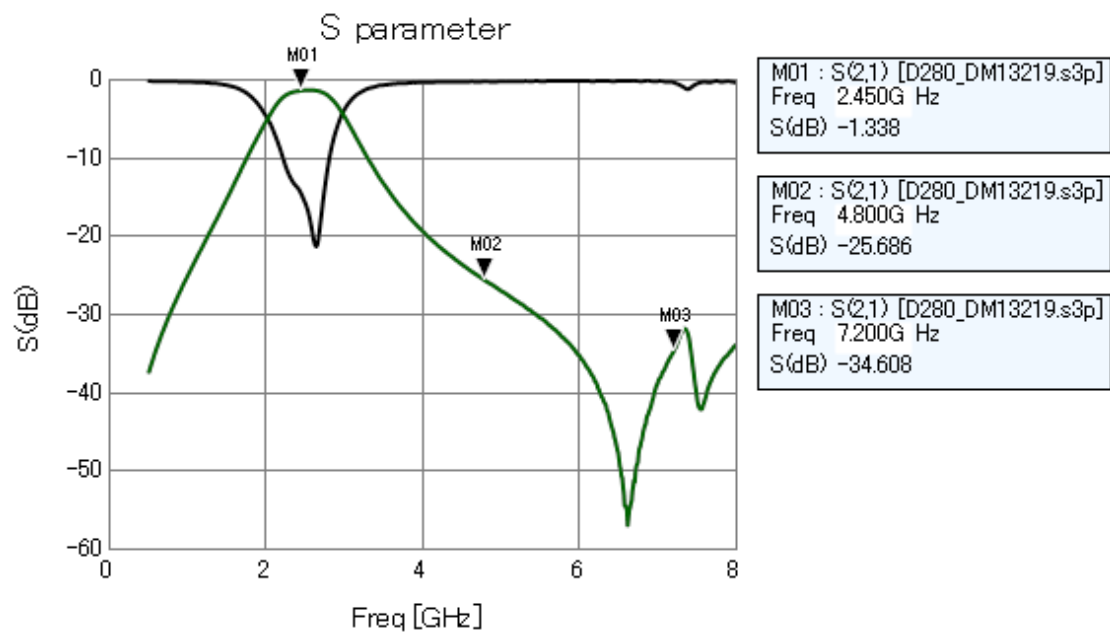


Figure 6, Filter Characteristics, measured by Murata

Application Note AN107

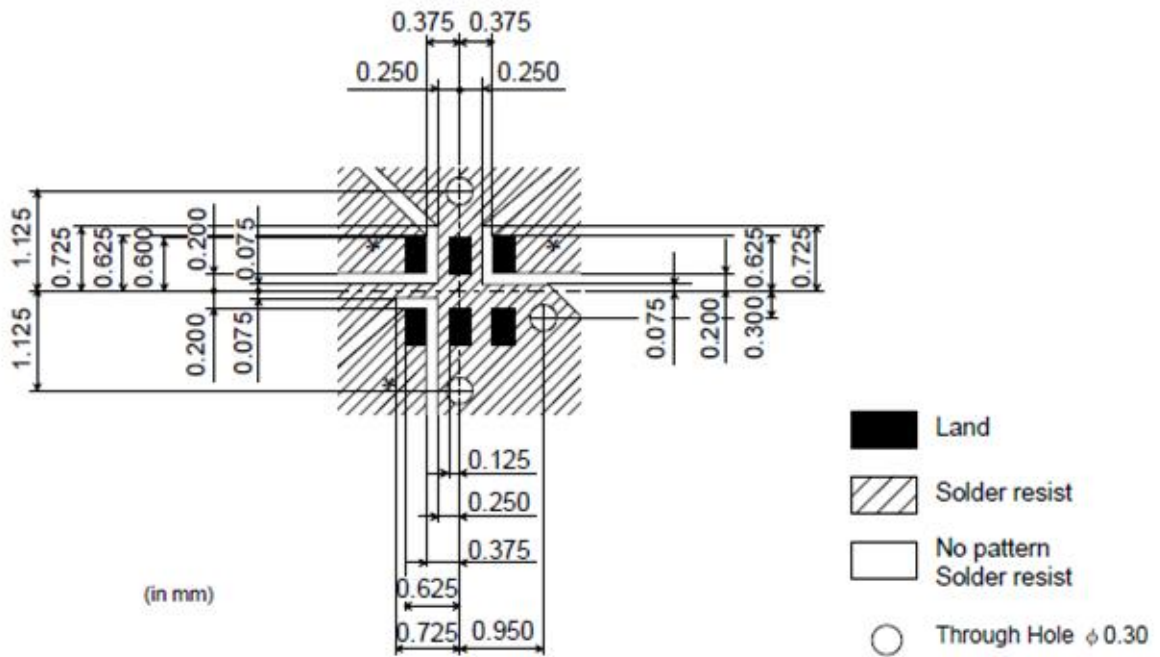


Figure 7, Recommended Footprint

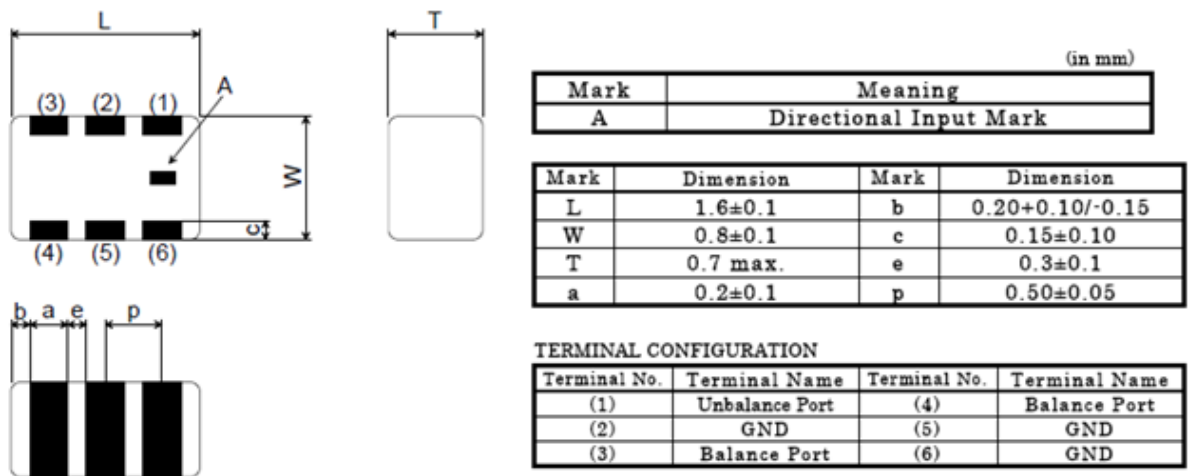


Figure 8, Physical Dimensions

Application Note AN107

6 References

- [1] IEEE Std. 802.15.4-2006: Wireless Medium Access Control (MAC) and Physical Layer (PHY) specifications for Low Rate Wireless Personal Area Networks (LR-WPANs) <http://standards.ieee.org/getieee802/download/802.15.4-2006.pdf>

7 General Information

7.1 Document History

Revision	Date	Description/Changes
SWRA380A	2011.10.25	Added CC257x and CC85xx
SWRA380	2011.08.25	Initial release.

IMPORTANT NOTICE

Texas Instruments Incorporated and its subsidiaries (TI) reserve the right to make corrections, modifications, enhancements, improvements, and other changes to its products and services at any time and to discontinue any product or service without notice. Customers should obtain the latest relevant information before placing orders and should verify that such information is current and complete. All products are sold subject to TI's terms and conditions of sale supplied at the time of order acknowledgment.

TI warrants performance of its hardware products to the specifications applicable at the time of sale in accordance with TI's standard warranty. Testing and other quality control techniques are used to the extent TI deems necessary to support this warranty. Except where mandated by government requirements, testing of all parameters of each product is not necessarily performed.

TI assumes no liability for applications assistance or customer product design. Customers are responsible for their products and applications using TI components. To minimize the risks associated with customer products and applications, customers should provide adequate design and operating safeguards.

TI does not warrant or represent that any license, either express or implied, is granted under any TI patent right, copyright, mask work right, or other TI intellectual property right relating to any combination, machine, or process in which TI products or services are used. Information published by TI regarding third-party products or services does not constitute a license from TI to use such products or services or a warranty or endorsement thereof. Use of such information may require a license from a third party under the patents or other intellectual property of the third party, or a license from TI under the patents or other intellectual property of TI.

Reproduction of TI information in TI data books or data sheets is permissible only if reproduction is without alteration and is accompanied by all associated warranties, conditions, limitations, and notices. Reproduction of this information with alteration is an unfair and deceptive business practice. TI is not responsible or liable for such altered documentation. Information of third parties may be subject to additional restrictions.

Resale of TI products or services with statements different from or beyond the parameters stated by TI for that product or service voids all express and any implied warranties for the associated TI product or service and is an unfair and deceptive business practice. TI is not responsible or liable for any such statements.

TI products are not authorized for use in safety-critical applications (such as life support) where a failure of the TI product would reasonably be expected to cause severe personal injury or death, unless officers of the parties have executed an agreement specifically governing such use. Buyers represent that they have all necessary expertise in the safety and regulatory ramifications of their applications, and acknowledge and agree that they are solely responsible for all legal, regulatory and safety-related requirements concerning their products and any use of TI products in such safety-critical applications, notwithstanding any applications-related information or support that may be provided by TI. Further, Buyers must fully indemnify TI and its representatives against any damages arising out of the use of TI products in such safety-critical applications.

TI products are neither designed nor intended for use in military/aerospace applications or environments unless the TI products are specifically designated by TI as military-grade or "enhanced plastic." Only products designated by TI as military-grade meet military specifications. Buyers acknowledge and agree that any such use of TI products which TI has not designated as military-grade is solely at the Buyer's risk, and that they are solely responsible for compliance with all legal and regulatory requirements in connection with such use.

TI products are neither designed nor intended for use in automotive applications or environments unless the specific TI products are designated by TI as compliant with ISO/TS 16949 requirements. Buyers acknowledge and agree that, if they use any non-designated products in automotive applications, TI will not be responsible for any failure to meet such requirements.

Following are URLs where you can obtain information on other Texas Instruments products and application solutions:

Products

Audio	www.ti.com/audio
Amplifiers	amplifier.ti.com
Data Converters	dataconverter.ti.com
DLP® Products	www.dlp.com
DSP	dsp.ti.com
Clocks and Timers	www.ti.com/clocks
Interface	interface.ti.com
Logic	logic.ti.com
Power Mgmt	power.ti.com
Microcontrollers	microcontroller.ti.com
RFID	www.ti-rfid.com
OMAP Mobile Processors	www.ti.com/omap
Wireless Connectivity	www.ti.com/wirelessconnectivity

Applications

Communications and Telecom	www.ti.com/communications
Computers and Peripherals	www.ti.com/computers
Consumer Electronics	www.ti.com/consumer-apps
Energy and Lighting	www.ti.com/energy
Industrial	www.ti.com/industrial
Medical	www.ti.com/medical
Security	www.ti.com/security
Space, Avionics and Defense	www.ti.com/space-avionics-defense
Transportation and Automotive	www.ti.com/automotive
Video and Imaging	www.ti.com/video

TI E2E Community Home Page

e2e.ti.com

Mailing Address: Texas Instruments, Post Office Box 655303, Dallas, Texas 75265
Copyright © 2011, Texas Instruments Incorporated