

## FEATURES

- Controlled Baseline
  - One Assembly/Test Site, One Fabrication Site
- Enhanced Diminishing Manufacturing Sources (DMS) Support
- Enhanced Product-Change Notification
- Qualification Pedigree <sup>(1)</sup>
- Specified Break-Before-Make Switching
- Low ON-State Resistance (1 Ω)
- Control Inputs Are 5-V Tolerant
- Low Charge Injection
- Excellent ON-State Resistance Matching

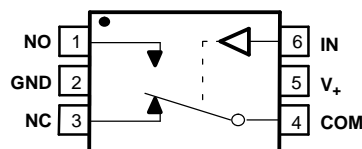
(1) Component qualification in accordance with JEDEC and industry standards to ensure reliable operation over an extended temperature range. This includes, but is not limited to, Highly Accelerated Stress Test (HAST) or biased 85/85, temperature cycle, autoclave or unbiased HAST, electromigration, bond intermetallic life, and mold compound life. Such qualification testing should not be viewed as justifying use of this component beyond specified performance and environmental limits.

- Low Total Harmonic Distortion
- 1.65-V to 5.5-V Single-Supply Operation
- Latch-Up Performance Exceeds 100 mA Per JESD 78, Class II
- ESD Performance Tested Per JESD 22
  - 2000-V Human-Body Model (A114-B, Class II)
  - 1000-V Charged-Device Model (C101)

## APPLICATIONS

- Cell Phones
- PDA's
- Portable Instrumentation

SOT-23 PACKAGE  
(TOP VIEW)



## DESCRIPTION/ORDERING INFORMATION

The TS5A3159-EP is a single-pole double-throw (SPDT) analog switch that is designed to operate from 1.65 V to 5.5 V. The device offers a low ON-state resistance and an excellent ON-state resistance matching with the break-before-make feature to prevent signal distortion during the transferring of a signal from one channel to another. The device has excellent total harmonic distortion (THD) performance and consumes very low power. These features make this device suitable for portable audio applications.

Summary of Characteristics<sup>(1)</sup>

| Configuration                                   | 2:1 Multiplexer/<br>Demultiplexer<br>(1 × SPDT) |
|---|---|
| Number of channels                              | 1   |
| ON-state resistance ( $r_{on}$ )                | 1.1 Ω   |
| ON-state resistance match ( $\Delta r_{on}$ )   | 0.1 Ω   |
| ON-state resistance flatness ( $r_{on(flat)}$ ) | 0.15 Ω  |
| Turn-on/turn-off time ( $t_{ON}/t_{OFF}$ )      | 20 ns/15 ns                                     |
| Break-before-make time ( $t_{BBM}$ )            | 12 ns   |
| Charge injection ( $Q_C$ )                      | 36 pC   |
| Bandwidth (BW)                                  | 100 MHz   |
| OFF isolation ( $O_{ISO}$ )                     | –65 dB at 1 MHz                                 |
| Crosstalk ( $X_{TALK}$ )                        | –66 dB at 1 MHz                                 |
| Total harmonic distortion (THD)                 | 0.01%   |
| Leakage current ( $I_{NO(OFF)}/I_{NC(OFF)}$ )   | ±20 nA  |
| Package option                                  | 6-pin DBV                                       |

(1)  $V_+ = 5\text{ V}$  and  $T_A = 25^\circ\text{C}$



Please be aware that an important notice concerning availability, standard warranty, and use in critical applications of Texas Instruments semiconductor products and disclaimers thereto appears at the end of this data sheet.

**ORDERING INFORMATION**

| T <sub>A</sub> | PACKAGE <sup>(1)</sup> |               | ORDERABLE PART NUMBER | TOP-SIDE MARKING |
|----------------|------------------------|---------------|-----------------------|------------------|
| –55°C to 125°C | SOT (SOT-23) – DBV     | Tape and reel | TS5A3159MDBVREP       | JA8R             |

(1) Package drawings, standard packing quantities, thermal data, symbolization, and PCB design guidelines are available at [www.ti.com/sc/package](http://www.ti.com/sc/package).

**FUNCTION TABLE**

| IN | NC TO COM,<br>COM TO NC | NO TO COM,<br>COM TO NO |
|----|-------------------------|-------------------------|
| L  | ON                      | OFF                     |
| H  | OFF                     | ON                      |

**Absolute Maximum Ratings<sup>(1)</sup>**

over operating free-air temperature range (unless otherwise noted)

|                                     |  | MIN   | MAX                  | UNIT     |
|-------------------------------------|--|---|----------------------|----------|
| V <sub>+</sub>                      | Supply voltage range <sup>(2)</sup>              | –0.5  | 6.5                  | V        |
| V <sub>NO</sub><br>V <sub>COM</sub> | Analog voltage range <sup>(2)(3)(4)</sup>        | –0.5  | V <sub>+</sub> + 0.5 | V        |
| I <sub>I/O</sub> K                  | Analog port diode current                        | V <sub>NO</sub> , V <sub>COM</sub> < 0 or V <sub>NO</sub> , V <sub>COM</sub> > V <sub>+</sub> |                      | ±50 mA   |
| I <sub>NO</sub><br>I <sub>COM</sub> | On-state switch current                          | V <sub>NO</sub> , V <sub>COM</sub> = 0 to V <sub>+</sub>                                      |                      | ±200 mA  |
|                                     | On-state peak switch current <sup>(5)</sup>      |   |                      | ±400 mA  |
| V <sub>IN</sub>                     | Digital input voltage range <sup>(2)(3)</sup>    | –0.5  | 6.5                  | V        |
| I <sub>IK</sub>                     | Digital input clamp current                      | V <sub>IN</sub> < 0   |                      | –50 mA   |
|                                     | Continuous current through V <sub>+</sub> or GND |   |                      | ±100 mA  |
| θ <sub>JA</sub>                     | Package thermal impedance <sup>(6)</sup>         |   |                      | 165 °C/W |
| T <sub>stg</sub>                    | Storage temperature range                        | –65   | 150                  | °C       |

- (1) Stresses beyond those listed under "absolute maximum ratings" may cause permanent damage to the device. These are stress ratings only, and functional operation of the device at these or any other conditions beyond those indicated under "Electrical Characteristics" is not implied. Exposure to absolute-maximum-rated conditions for extended periods may affect device reliability.
- (2) All voltages are with respect to ground, unless otherwise specified.
- (3) The input and output voltage ratings may be exceeded if the input and output clamp-current ratings are observed.
- (4) This value is limited to 5.5 V maximum.
- (5) Pulse at 1-ms duration < 10% duty cycle.
- (6) The package thermal impedance is calculated in accordance with JESD 51-7.

**Electrical Characteristics for 5-V Supply**

$V_+ = 4.5\text{ V to }5.5\text{ V}$  (5 V nominal),  $T_A = -55^\circ\text{C to }125^\circ\text{C}$  (unless otherwise noted)

| PARAMETER                                  | SYMBOL                     | TEST CONDITIONS   |                           | $T_A$ | $V_+$ | MIN   | TYP <sup>(1)</sup> | MAX   | UNIT          |
|--|----------------------------|---|---------------------------|-------|-------|-------|--------------------|-------|---------------|
| <b>Analog Switch</b>                       |                            |   |                           |       |       |       |                    |       |               |
| Analog signal range                        | $V_{COM}, V_{NC}, V_{NO}$  |   |                           |       |       | 0     |                    | $V_+$ | V             |
| Peak ON resistance                         | $r_{peak}$                 | $0 \leq V_{NO} \text{ or } V_{NC} \leq V_+, I_{COM} = -30\text{ mA},$                         | Switch ON, See Figure 11  | 25°C  | 4.5 V | 1     |                    | 1.5   | $\Omega$      |
|  |                            |   |                           | Full  |       | 1.5   |                    |       |               |
| ON-state resistance                        | $r_{on}$                   | $V_{NO} \text{ or } V_{NC} = 2.5\text{ V}, I_{COM} = -30\text{ mA},$                          | Switch ON, See Figure 11  | 25°C  | 4.5 V | 0.75  |                    | 1.1   | $\Omega$      |
|  |                            |   |                           | Full  |       | 1.3   |                    |       |               |
| ON-state resistance match between channels | $\Delta r_{on}$            | $V_{NO} \text{ or } V_{NC} = 2.5\text{ V}, I_{COM} = -30\text{ mA},$                          | Switch ON, See Figure 11  | 25°C  | 4.5 V | 0.1   |                    |       | $\Omega$      |
| ON-state resistance flatness               | $r_{on(flat)}$             | $0 \leq V_{NO} \text{ or } V_{NC} \leq V_+, I_{COM} = -30\text{ mA}$                          | Switch ON, See Figure 11  | 25°C  | 4.5 V | 0.233 |                    |       | $\Omega$      |
|  |                            | $V_{NO} \text{ or } V_{NC} = 1\text{ V}, 1.5\text{ V}, 2.5\text{ V}, I_{COM} = -30\text{ mA}$ |                           |       |       | 0.15  |                    |       |               |
| NC, NO OFF leakage current                 | $I_{NC(OFF)}, I_{NO(OFF)}$ | $V_{NC} \text{ or } V_{NO} = 4.5\text{ V}, V_{COM} = 0,$                                      | Switch OFF, See Figure 12 | 25°C  | 5.5 V | -6    | 0.2                | 4     | nA            |
|  |                            |   |                           | Full  |       | -20   | 60                 |       |               |
| NC, NO ON leakage current                  | $I_{NC(ON)}, I_{NO(ON)}$   | $V_{NC} \text{ or } V_{NO} = 4.5\text{ V}, V_{COM} = \text{Open},$                            | Switch ON, See Figure 13  | 25°C  | 5.5 V | -6    | 2.8                | 4     | nA            |
|  |                            |   |                           | Full  |       | -40   | 70                 |       |               |
| COM ON leakage current                     | $I_{COM(ON)}$              | $V_{NC} \text{ or } V_{NO} = 4.5\text{ V or Open}, V_{COM} = 4.5\text{ V},$                   | Switch ON, See Figure 13  | 25°C  | 5.5 V | -4    | 0.47               | 7     | nA            |
|  |                            |   |                           | Full  |       | -40   | 80                 |       |               |
| <b>Digital Control Input (IN)</b>          |                            |   |                           |       |       |       |                    |       |               |
| Input logic high                           | $V_{IH}$                   |   |                           | Full  |       | 2.4   |                    | 5.5   | V             |
| Input logic low                            | $V_{IL}$                   |   |                           | Full  |       | 0     |                    | 0.8   | V             |
| Input leakage current                      | $I_{IH}, I_{IL}$           | $V_I = 5.5\text{ V or }0$   |                           | Full  | 5.5 V | -1    |                    | 1     | $\mu\text{A}$ |

(1)  $T_A = 25^\circ\text{C}$

**TS5A3159-EP**  
**1-Ω SPDT ANALOG SWITCH**

SCDS217B–DECEMBER 2005–REVISED JANUARY 2006

**Electrical Characteristics for 5-V Supply (continued)**

$V_+ = 4.5\text{ V to }5.5\text{ V}$  (5 V nominal),  $T_A = -55^\circ\text{C to }125^\circ\text{C}$  (unless otherwise noted)

| PARAMETER                 | SYMBOL                           | TEST CONDITIONS                                     | $T_A$   | $V_+$ | MIN               | TYP <sup>(1)</sup> | MAX | UNIT          |    |
|---------------------------|----------------------------------|---|---|-------|-------------------|--------------------|-----|---------------|----|
| <b>Dynamic</b>            |                                  |   |   |       |                   |                    |     |               |    |
| Turn-on time              | $t_{ON}$                         | $V_{COM} = V_+$ ,<br>$R_L = 50\ \Omega$ ,           | $C_L = 35\text{ pF}$ ,<br>See Figure 15                 | 25°C  | 4.5 V to<br>5.5 V | 20                 | 35  | ns            |    |
|                           |                                  |   |   | Full  |                   |                    | 40  |               |    |
| Turn-off time             | $t_{OFF}$                        | $V_{COM} = V_+$ ,<br>$R_L = 50\ \Omega$ ,           | $C_L = 35\text{ pF}$ ,<br>See Figure 15                 | 25°C  | 4.5 V to<br>5.5 V | 15                 | 20  | ns            |    |
|                           |                                  |   |   | Full  |                   |                    | 35  |               |    |
| Break-before-make time    | $t_{BBM}$                        | $V_{NC} = V_{NO} = V_+/2$ ,<br>$R_L = 50\ \Omega$ , | $C_L = 35\text{ pF}$ ,<br>See Figure 16                 | 25°C  | 4.5 V to<br>5.5 V | 1                  | 12  | 14.5          | ns |
|                           |                                  |   |   | Full  |                   |                    | 1   |               |    |
| Charge injection          | $Q_C$                            | $C_L = 1\text{ nF}$ ,<br>$V_{GEN} = 0\text{ V}$ ,   | See Figure 20   | 25°C  | 5 V               | 36                 |     | pC            |    |
| NC, NO OFF capacitance    | $C_{NC(OFF)}$ ,<br>$C_{NO(OFF)}$ | $V_{NC}$ or $V_{NO} = V_+$ or GND,<br>Switch OFF,   | See Figure 14   | 25°C  | 5 V               | 23                 |     | pF            |    |
| NC, NO ON capacitance     | $C_{NC(ON)}$ ,<br>$C_{NO(ON)}$   | $V_{NC}$ or $V_{NO} = V_+$ or GND,<br>Switch ON,    | See Figure 14   | 25°C  | 5 V               | 84                 |     | pF            |    |
| COM ON capacitance        | $C_{COM(ON)}$                    | $V_{COM} = V_+$ or GND,<br>Switch ON,               | See Figure 14   | 25°C  | 5 V               | 84                 |     | pF            |    |
| Digital input capacitance | $C_{IN}$                         | $V_{IN} = V_+$ or GND,                              | See Figure 14   | 25°C  | 5 V               | 2.1                |     | pF            |    |
| Bandwidth                 | BW                               | $R_L = 50\ \Omega$ ,<br>Switch ON,                  | See Figure 17   | 25°C  | 5 V               | 100                |     | MHz           |    |
| OFF isolation             | $O_{ISO}$                        | $R_L = 50\ \Omega$ ,<br>$f = 1\text{ MHz}$ ,        | Switch OFF,<br>See Figure 18                            | 25°C  | 5 V               | -65                |     | dB            |    |
| Crosstalk                 | $X_{TALK}$                       | $R_L = 50\ \Omega$ ,<br>$f = 1\text{ MHz}$ ,        | Switch ON,<br>See Figure 19                             | 25°C  | 5 V               | -65                |     | dB            |    |
| Total harmonic distortion | THD                              | $R_L = 600\ \Omega$ ,<br>$C_L = 50\text{ pF}$ ,     | $f = 600\text{ Hz to }20\text{ kHz}$ ,<br>See Figure 21 | 25°C  | 5 V               | 0.01               |     | %             |    |
| <b>Supply</b>             |                                  |   |   |       |                   |                    |     |               |    |
| Positive supply current   | $I_+$                            | $V_{IN} = V_+$ or GND,                              | Switch ON or OFF  | Full  | 5.5 V             | 0.1                |     | $\mu\text{A}$ |    |

### Electrical Characteristics for 3.3-V Supply

$V_+ = 3\text{ V to }3.6\text{ V}$  (3.3 V nominal),  $T_A = -55^\circ\text{C to }125^\circ\text{C}$  (unless otherwise noted)

| PARAMETER                                  | SYMBOL                     | TEST CONDITIONS  |                           | $T_A$ | $V_+$ | MIN | TYP <sup>(1)</sup> | MAX   | UNIT          |
|--|----------------------------|--|---------------------------|-------|-------|-----|--------------------|-------|---------------|
| <b>Analog Switch</b>                       |                            |  |                           |       |       |     |                    |       |               |
| Analog signal range                        | $V_{COM}, V_{NC}, V_{NO}$  |  |                           |       |       | 0   |                    | $V_+$ | V             |
| Peak ON resistance                         | $r_{peak}$                 | $0 \leq V_{NO} \text{ or } V_{NC} \leq V_+, I_{COM} = -24\text{ mA},$            | Switch ON, See Figure 11  | 25°C  | 3 V   |     | 1.35               | 2.15  | $\Omega$      |
|  |                            |  |                           | Full  |       |     | 2.15               |       |               |
| ON-state resistance                        | $r_{on}$                   | $V_{NO} \text{ or } V_{NC} = 2\text{ V}, I_{COM} = -24\text{ mA},$               | Switch ON, See Figure 11  | 25°C  | 3 V   |     | 1.15               | 1.7   | $\Omega$      |
|  |                            |  |                           | Full  |       |     | 1.7                |       |               |
| ON-state resistance match between channels | $\Delta r_{on}$            | $V_{NO} \text{ or } V_{NC} = 2\text{ V}, 0.8\text{ V}, I_{COM} = -24\text{ mA},$ | Switch ON, See Figure 11  | 25°C  | 3 V   |     | 0.11               |       | $\Omega$      |
| ON-state resistance flatness               | $r_{on(Flat)}$             | $0 \leq V_{NO} \text{ or } V_{NC} \leq V_+, I_{COM} = -24\text{ mA}$             | Switch ON, See Figure 11  | 25°C  | 3 V   |     | 0.225              |       | $\Omega$      |
|  |                            | $V_{NO} \text{ or } V_{NC} = 2\text{ V}, 0.8\text{ V}, I_{COM} = -24\text{ mA}$  |                           |       |       |     | 0.25               |       |               |
| NC, NO OFF leakage current                 | $I_{NC(OFF)}, I_{NO(OFF)}$ | $V_{NC} \text{ or } V_{NO} = 3\text{ V}, V_{COM} = 0,$                           | Switch OFF, See Figure 12 | 25°C  | 3.6 V |     | 0.2                |       | nA            |
| NC, NO ON leakage current                  | $I_{NC(ON)}, I_{NO(ON)}$   | $V_{NC} \text{ or } V_{NO} = 3\text{ V}, V_{COM} = \text{Open},$                 | Switch ON, See Figure 13  | 25°C  | 3.6 V |     | 2.8                |       | nA            |
| COM ON leakage current                     | $I_{COM(ON)}$              | $V_{NC} \text{ or } V_{NO} = 3\text{ V or Open}, V_{COM} = 3\text{ V},$          | Switch ON, See Figure 13  | 25°C  | 3.6 V |     | 0.47               |       | nA            |
| <b>Digital Control Input (IN)</b>          |                            |  |                           |       |       |     |                    |       |               |
| Input logic high                           | $V_{IH}$                   |  |                           | Full  |       | 2   |                    | 5.5   | V             |
| Input logic low                            | $V_{IL}$                   |  |                           | Full  |       | 0   | 0.6                |       | V             |
| Input leakage current                      | $I_{IH}, I_{IL}$           | $V_I = 5.5\text{ V or }0$  |                           | Full  | 3.6 V | -1  |                    | 1     | $\mu\text{A}$ |

(1)  $T_A = 25^\circ\text{C}$

# TS5A3159-EP

## 1-Ω SPDT ANALOG SWITCH

SCDS217B–DECEMBER 2005–REVISED JANUARY 2006

### Electrical Characteristics for 3.3-V Supply (continued)

$V_+ = 3\text{ V to }3.6\text{ V}$  (3.3 V nominal),  $T_A = -55^\circ\text{C to }125^\circ\text{C}$  (unless otherwise noted)

| PARAMETER                 | SYMBOL                           | TEST CONDITIONS                                     |   | $T_A$ | $V_+$           | MIN   | TYP <sup>(1)</sup> | MAX | UNIT          |
|---------------------------|----------------------------------|---|---|-------|-----------------|-------|--------------------|-----|---------------|
| <b>Dynamic</b>            |                                  |   |   |       |                 |       |                    |     |               |
| Turn-on time              | $t_{ON}$                         | $V_{COM} = V_+$ ,<br>$R_L = 50\ \Omega$ ,           | $C_L = 35\text{ pF}$ ,<br>See Figure 15                 | 25°C  | 3 V to<br>3.6 V | 30    | 40                 | 40  | ns            |
|                           |                                  |   |   | Full  |                 |       |                    |     |               |
| Turn-off time             | $t_{OFF}$                        | $V_{COM} = V_+$ ,<br>$R_L = 50\ \Omega$ ,           | $C_L = 35\text{ pF}$ ,<br>See Figure 15                 | 25°C  | 3 V to<br>3.6 V | 20    | 25                 | 25  | ns            |
|                           |                                  |   |   | Full  |                 |       |                    |     |               |
| Break-before-make time    | $t_{BBM}$                        | $V_{NC} = V_{NO} = V_+/2$ ,<br>$R_L = 50\ \Omega$ , | $C_L = 35\text{ pF}$ ,<br>See Figure 16                 | 25°C  | 3 V to<br>3.6 V | 1     | 21                 | 29  | ns            |
|                           |                                  |   |   | Full  |                 |       |                    |     |               |
| Charge injection          | $Q_C$                            | $C_L = 1\text{ nF}$ ,<br>$V_{GEN} = 0\text{ V}$ ,   | See Figure 20   | 25°C  | 3.3 V           | 20    |                    |     | pC            |
| NC, NO OFF capacitance    | $C_{NC(OFF)}$ ,<br>$C_{NO(OFF)}$ | $V_{NC}$ or $V_{NO} = V_+$ or GND,<br>Switch OFF,   | See Figure 14   | 25°C  | 3.3 V           | 23    |                    |     | pF            |
| NC, NO ON capacitance     | $C_{NC(ON)}$ ,<br>$C_{NO(ON)}$   | $V_{NC}$ or $V_{NO} = V_+$ or GND,<br>Switch ON,    | See Figure 14   | 25°C  | 3.3 V           | 84    |                    |     | pF            |
| COM ON capacitance        | $C_{COM(ON)}$                    | $V_{COM} = V_+$ or GND,<br>Switch ON,               | See Figure 14   | 25°C  | 3.3 V           | 84    |                    |     | pF            |
| Digital input capacitance | $C_{IN}$                         | $V_{IN} = V_+$ or GND,                              | See Figure 14   | 25°C  | 3.3 V           | 2.1   |                    |     | pF            |
| Bandwidth                 | BW                               | $R_L = 50\ \Omega$ ,<br>Switch ON,                  | See Figure 17   | 25°C  | 3.3 V           | 100   |                    |     | MHz           |
| OFF isolation             | $O_{ISO}$                        | $R_L = 50\ \Omega$ ,<br>$f = 1\text{ MHz}$ ,        | Switch OFF,<br>See Figure 18                            | 25°C  | 3.3 V           | -65   |                    |     | dB            |
| Crosstalk                 | $X_{TALK}$                       | $R_L = 50\ \Omega$ ,<br>$f = 1\text{ MHz}$ ,        | Switch ON,<br>See Figure 19                             | 25°C  | 3.3 V           | -65   |                    |     | dB            |
| Total harmonic distortion | THD                              | $R_L = 600\ \Omega$ ,<br>$C_L = 50\text{ pF}$ ,     | $f = 600\text{ Hz to }20\text{ kHz}$ ,<br>See Figure 21 | 25°C  | 3.3 V           | 0.015 |                    |     | %             |
| <b>Supply</b>             |                                  |   |   |       |                 |       |                    |     |               |
| Positive supply current   | $I_+$                            | $V_{IN} = V_+$ or GND,                              | Switch ON or OFF  | Full  | 3.6 V           | 0.1   |                    |     | $\mu\text{A}$ |

### Electrical Characteristics for 2.5-V Supply

$V_+ = 2.3 \text{ V to } 2.7 \text{ V}$  (2.5 V nominal),  $T_A = -55^\circ\text{C to } 125^\circ\text{C}$  (unless otherwise noted)

| PARAMETER                                  | SYMBOL                     | TEST CONDITIONS  |                           | $T_A$ | $V_+$ | MIN | TYP <sup>(1)</sup> | MAX   | UNIT          |
|--|----------------------------|--|---------------------------|-------|-------|-----|--------------------|-------|---------------|
| <b>Analog Switch</b>                       |                            |  |                           |       |       |     |                    |       |               |
| Analog signal range                        | $V_{COM}, V_{NC}, V_{NO}$  |  |                           |       |       | 0   |                    | $V_+$ | V             |
| Peak ON resistance                         | $r_{peak}$                 | $0 \leq V_{NO} \text{ or } V_{NC} \leq V_+, I_{COM} = -8 \text{ mA},$                | Switch ON, See Figure 11  | 25°C  | 2.5 V |     | 1.7                | 2.7   | $\Omega$      |
|  |                            |  |                           | Full  |       |     | 2.9                |       |               |
| ON-state resistance                        | $r_{on}$                   | $V_{NO} \text{ or } V_{NC} = 1.8 \text{ V}, I_{COM} = -8 \text{ mA},$                | Switch ON, See Figure 11  | 25°C  | 2.5 V |     | 1.45               | 2.3   | $\Omega$      |
|  |                            |  |                           | Full  |       |     | 2.5                |       |               |
| ON-state resistance match between channels | $\Delta r_{on}$            | $V_{NO} \text{ or } V_{NC} = 0.8 \text{ V}, 1.8 \text{ V}, I_{COM} = -8 \text{ mA},$ | Switch ON, See Figure 11  | 25°C  | 2.5 V |     | 0.7                |       | $\Omega$      |
| ON-state resistance flatness               | $r_{on(flat)}$             | $0 \leq V_{NO} \text{ or } V_{NC} \leq V_+, I_{COM} = -8 \text{ mA}$                 | Switch ON, See Figure 11  | 25°C  | 2.5 V |     | 0.5                |       | $\Omega$      |
|  |                            | $V_{NO} \text{ or } V_{NC} = 0.8 \text{ V}, 1.8 \text{ V}, I_{COM} = -8 \text{ mA}$  |                           |       |       |     | 0.45               |       |               |
| NC, NO OFF leakage current                 | $I_{NC(OFF)}, I_{NO(OFF)}$ | $V_{NC} \text{ or } V_{NO} = 2.3 \text{ V}, V_{COM} = 0,$                            | Switch OFF, See Figure 12 | 25°C  | 2.7 V |     | 0.2                |       | nA            |
| NC, NO ON leakage current                  | $I_{NC(ON)}, I_{NO(ON)}$   | $V_{NC} \text{ or } V_{NO} = 2.3 \text{ V}, V_{COM} = \text{Open},$                  | Switch ON, See Figure 13  | 25°C  | 2.7 V |     | 2.8                |       | nA            |
| COM ON leakage current                     | $I_{COM(ON)}$              | $V_{NC} \text{ or } V_{NO} = 2.3 \text{ V or Open}, V_{COM} = 2.3 \text{ V},$        | Switch ON, See Figure 13  | 25°C  | 2.7 V |     | 0.47               |       | nA            |
| <b>Digital Control Input (IN)</b>          |                            |  |                           |       |       |     |                    |       |               |
| Input logic high                           | $V_{IH}$                   |  |                           | Full  |       | 1.8 |                    | 5.5   | V             |
| Input logic low                            | $V_{IL}$                   |  |                           | Full  |       | 0   | 0.6                |       | V             |
| Input leakage current                      | $I_{IH}, I_{IL}$           | $V_I = 5.5 \text{ V or } 0$  |                           | Full  | 2.7 V | -1  |                    | 1     | $\mu\text{A}$ |

(1)  $T_A = 25^\circ\text{C}$

# TS5A3159-EP

## 1-Ω SPDT ANALOG SWITCH

SCDS217B–DECEMBER 2005–REVISED JANUARY 2006

### Electrical Characteristics for 2.5-V Supply (continued)

 $V_+ = 2.3 \text{ V to } 2.7 \text{ V}$  (2.5 V nominal),  $T_A = -55^\circ\text{C to } 125^\circ\text{C}$  (unless otherwise noted)

| PARAMETER                 | SYMBOL                           | TEST CONDITIONS                                     |  | $T_A$ | $V_+$             | MIN   | TYP <sup>(1)</sup> | MAX           | UNIT |
|---------------------------|----------------------------------|---|--|-------|-------------------|-------|--------------------|---------------|------|
| <b>Dynamic</b>            |                                  |   |  |       |                   |       |                    |               |      |
| Turn-on time              | $t_{ON}$                         | $V_{COM} = V_+$ ,<br>$R_L = 50 \Omega$ ,            | $C_L = 35 \text{ pF}$ ,<br>See Figure 15                   | 25°C  | 2.3 V to<br>2.7 V | 40    | 55                 | 70            | ns   |
|                           |                                  |   |  | Full  |                   |       |                    |               |      |
| Turn-off time             | $t_{OFF}$                        | $V_{COM} = V_+$ ,<br>$R_L = 50 \Omega$ ,            | $C_L = 35 \text{ pF}$ ,<br>See Figure 15                   | 25°C  | 2.3 V to<br>2.7 V | 30    | 40                 | 55            | ns   |
|                           |                                  |   |  | Full  |                   |       |                    |               |      |
| Break-before-make time    | $t_{BBM}$                        | $V_{NC} = V_{NO} = V_+/2$ ,<br>$R_L = 50 \Omega$ ,  | $C_L = 35 \text{ pF}$ ,<br>See Figure 16                   | 25°C  | 2.3 V to<br>2.7 V | 1     | 33                 | 39            | ns   |
|                           |                                  |   |  | Full  |                   |       |                    |               |      |
| Charge injection          | $Q_C$                            | $C_L = 1 \text{ nF}$ ,<br>$V_{GEN} = 0 \text{ V}$ , | See Figure 20  | 25°C  | 2.5 V             | 13    |                    | pC            |      |
| NC, NO OFF capacitance    | $C_{NC(OFF)}$ ,<br>$C_{NO(OFF)}$ | $V_{NC}$ or $V_{NO} = V_+$ or GND,<br>Switch OFF,   | See Figure 14  | 25°C  | 2.5 V             | 23    |                    | pF            |      |
| NC, NO ON capacitance     | $C_{NC(ON)}$ ,<br>$C_{NO(ON)}$   | $V_{NC}$ or $V_{NO} = V_+$ or GND,<br>Switch ON,    | See Figure 14  | 25°C  | 2.5 V             | 84    |                    | pF            |      |
| COM ON capacitance        | $C_{COM(ON)}$                    | $V_{COM} = V_+$ or GND,<br>Switch ON,               | See Figure 14  | 25°C  | 2.5 V             | 84    |                    | pF            |      |
| Digital input capacitance | $C_{IN}$                         | $V_{IN} = V_+$ or GND,                              | See Figure 14  | 25°C  | 2.5 V             | 2.1   |                    | pF            |      |
| Bandwidth                 | BW                               | $R_L = 50 \Omega$ ,<br>Switch ON,                   | See Figure 17  | 25°C  | 2.5 V             | 100   |                    | MHz           |      |
| OFF isolation             | $O_{ISO}$                        | $R_L = 50 \Omega$ ,<br>$f = 1 \text{ MHz}$ ,        | Switch OFF,<br>See Figure 18                               | 25°C  | 2.5 V             | -64   |                    | dB            |      |
| Crosstalk                 | $X_{TALK}$                       | $R_L = 50 \Omega$ ,<br>$f = 1 \text{ MHz}$ ,        | Switch ON,<br>See Figure 19                                | 25°C  | 2.5 V             | -64   |                    | dB            |      |
| Total harmonic distortion | THD                              | $R_L = 600 \Omega$ ,<br>$C_L = 50 \text{ pF}$ ,     | $f = 600 \text{ Hz to } 20 \text{ kHz}$ ,<br>See Figure 21 | 25°C  | 2.5 V             | 0.025 |                    | %             |      |
| <b>Supply</b>             |                                  |   |  |       |                   |       |                    |               |      |
| Positive supply current   | $I_+$                            | $V_{IN} = V_+$ or GND,                              | Switch ON or OFF   | Full  | 2.7 V             | 0.1   |                    | $\mu\text{A}$ |      |



**Electrical Characteristics for 1.8-V Supply**
 $V_+ = 1.65\text{ V to }1.95\text{ V (1.8 V nominal)}$ ,  $T_A = -55^\circ\text{C to }125^\circ\text{C}$  (unless otherwise noted)

| PARAMETER                                  | SYMBOL                     | TEST CONDITIONS   |                              | $T_A$ | $V_+$  | MIN | TYP <sup>(1)</sup> | MAX   | UNIT          |
|--|----------------------------|---|------------------------------|-------|--------|-----|--------------------|-------|---------------|
| <b>Analog Switch</b>                       |                            |   |                              |       |        |     |                    |       |               |
| Analog signal range                        | $V_{COM}, V_{NC}, V_{NO}$  |   |                              |       |        | 0   |                    | $V_+$ | V             |
| Peak ON resistance                         | $r_{peak}$                 | $0 \leq V_{NO} \text{ or } V_{NC} \leq V_+$ ,<br>$I_{COM} = -2\text{ mA}$ ,   | Switch ON,<br>See Figure 11  | 25°C  | 1.8 V  |     | 4                  | 4.9   | $\Omega$      |
|  |                            |   |                              | Full  |        |     |                    |       |               |
| ON-state resistance                        | $r_{on}$                   | $V_{NO} \text{ or } V_{NC} = 1.5\text{ V}$ ,<br>$I_{COM} = -2\text{ mA}$ ,  | Switch ON,<br>See Figure 11  | 25°C  | 1.8 V  |     | 1.7                | 3.2   | $\Omega$      |
|  |                            |   |                              | Full  |        |     |                    |       |               |
| ON-state resistance match between channels | $\Delta r_{on}$            | $V_{NO} \text{ or } V_{NC} = 0.6\text{ V, }1.5\text{ V}$ ,<br>$I_{COM} = -2\text{ mA}$ ,  | Switch ON,<br>See Figure 11  | 25°C  | 1.8 V  |     | 0.7                |       | $\Omega$      |
|  |                            |   |                              | Full  |        |     |                    |       |               |
| ON-state resistance flatness               | $r_{on(Flat)}$             | $0 \leq V_{NO} \text{ or } V_{NC} \leq V_+$ ,<br>$I_{COM} = -2\text{ mA}$<br>$V_{NO} \text{ or } V_{NC} = 0.6\text{ V, }1.5\text{ V}$ ,<br>$I_{COM} = -2\text{ mA}$ | Switch ON,<br>See Figure 11  | 25°C  | 1.8 V  |     | 1.85               |       | $\Omega$      |
|  |                            |   |                              | Full  |        |     |                    |       |               |
|  |                            |   |                              | 25°C  |        |     |                    |       |               |
|  |                            |   |                              | Full  |        |     |                    |       |               |
| NC, NO OFF leakage current                 | $I_{NC(OFF)}, I_{NO(OFF)}$ | $V_{NC} \text{ or } V_{NO} = 1.65\text{ V}$ ,<br>$V_{COM} = 0$ ,  | Switch OFF,<br>See Figure 12 | 25°C  | 1.95 V |     | 0.2                |       | nA            |
| NC, NO ON leakage current                  | $I_{NC(ON)}, I_{NO(ON)}$   | $V_{NC} \text{ or } V_{NO} = 1.65\text{ V}$ ,<br>$V_{COM} = \text{Open}$ ,  | Switch ON,<br>See Figure 13  | 25°C  | 1.95 V |     | 2.8                |       | nA            |
| COM ON leakage current                     | $I_{COM(ON)}$              | $V_{NC} \text{ or } V_{NO} = 1.65\text{ V or Open}$ ,<br>$V_{COM} = 1.65\text{ V}$ ,  | Switch ON,<br>See Figure 13  | 25°C  | 1.95 V |     | 0.47               |       | nA            |
| <b>Digital Control Input (IN)</b>          |                            |   |                              |       |        |     |                    |       |               |
| Input logic high                           | $V_{IH}$                   |   |                              | Full  |        | 1.5 |                    | 5.5   | V             |
| Input logic low                            | $V_{IL}$                   |   |                              | Full  |        | 0   | 0.6                |       | V             |
| Input leakage current                      | $I_{IH}, I_{IL}$           | $V_I = 5.5\text{ V or }0$   |                              | Full  | 1.95 V | -1  |                    | 1     | $\mu\text{A}$ |

 (1)  $T_A = 25^\circ\text{C}$

# TS5A3159-EP

## 1-Ω SPDT ANALOG SWITCH

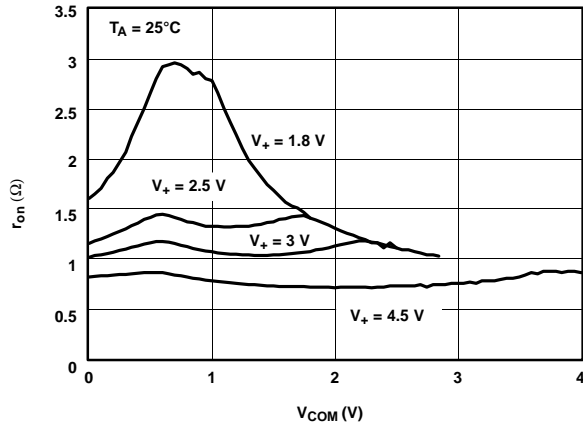
SCDS217B–DECEMBER 2005–REVISED JANUARY 2006

### Electrical Characteristics for 1.8-V Supply (continued)

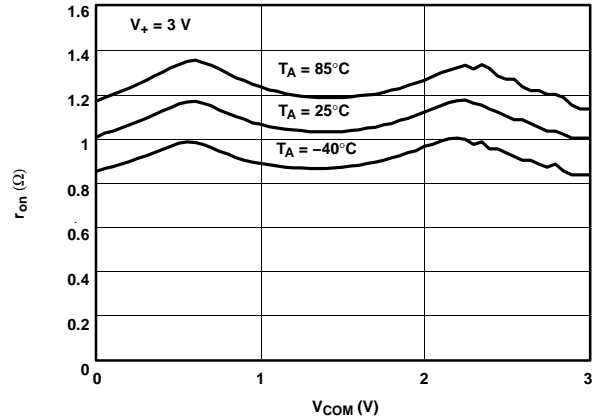
$V_+ = 1.65\text{ V to }1.95\text{ V}$  (1.8 V nominal),  $T_A = -55^\circ\text{C to }125^\circ\text{C}$  (unless otherwise noted)

| PARAMETER                 | SYMBOL                           | TEST CONDITIONS                                     | $T_A$                                   | $V_+$ | MIN                 | TYP <sup>(1)</sup> | MAX | UNIT          |
|---------------------------|----------------------------------|---|---|-------|---------------------|--------------------|-----|---------------|
| <b>Dynamic</b>            |                                  |   |   |       |                     |                    |     |               |
| Turn-on time              | $t_{ON}$                         | $V_{COM} = V_+$ ,<br>$R_L = 50\ \Omega$ ,           | $C_L = 35\text{ pF}$ ,<br>See Figure 15 | 25°C  | 1.65 V to<br>1.95 V | 65                 | 70  | ns            |
|                           |                                  |   |   | Full  |                     | 95                 |     |               |
| Turn-off time             | $t_{OFF}$                        | $V_{COM} = V_+$ ,<br>$R_L = 50\ \Omega$ ,           | $C_L = 35\text{ pF}$ ,<br>See Figure 15 | 25°C  | 1.65 V to<br>1.95 V | 40                 | 55  | ns            |
|                           |                                  |   |   | Full  |                     | 70                 |     |               |
| Break-before-make time    | $t_{BBM}$                        | $V_{NC} = V_{NO} = V_+/2$ ,<br>$R_L = 50\ \Omega$ , | $C_L = 35\text{ pF}$ ,<br>See Figure 16 | 25°C  | 1.65 V to<br>1.95 V | 1                  | 60  | ns            |
|                           |                                  |   |   | Full  |                     | 0.5                |     |               |
| Charge injection          | $Q_C$                            | $C_L = 1\text{ nF}$ ,<br>$V_{GEN} = 0\text{ V}$ ,   | See Figure 20                           | 25°C  | 1.8 V               | 13                 |     | pC            |
| NC, NO OFF capacitance    | $C_{NC(OFF)}$ ,<br>$C_{NO(OFF)}$ | $V_{NC}$ or $V_{NO} = V_+$ or GND,<br>Switch OFF,   | See Figure 14                           | 25°C  | 1.8 V               | 23                 |     | pF            |
| NC, NO ON capacitance     | $C_{NC(ON)}$ ,<br>$C_{NO(ON)}$   | $V_{NC}$ or $V_{NO} = V_+$ or GND,<br>Switch ON,    | See Figure 14                           | 25°C  | 1.8 V               | 84                 |     | pF            |
| COM ON capacitance        | $C_{COM(ON)}$                    | $V_{COM} = V_+$ or GND,<br>Switch ON,               | See Figure 14                           | 25°C  | 1.8 V               | 84                 |     | pF            |
| Digital input capacitance | $C_{IN}$                         | $V_{IN} = V_+$ or GND,                              | See Figure 14                           | 25°C  | 1.8 V               | 2.1                |     | pF            |
| Bandwidth                 | BW                               | $R_L = 50\ \Omega$ ,<br>Switch ON,                  | See Figure 17                           | 25°C  | 1.8 V               | 100                |     | MHz           |
| OFF isolation             | $O_{ISO}$                        | $R_L = 50\ \Omega$ ,<br>$f = 1\text{ MHz}$ ,        | Switch OFF,<br>See Figure 18            | 25°C  | 1.8 V               | -63                |     | dB            |
| Crosstalk                 | $X_{TALK}$                       | $R_L = 50\ \Omega$ ,<br>$f = 1\text{ MHz}$ ,        | Switch ON,<br>See Figure 19             | 25°C  | 1.8 V               | -63                |     | dB            |
| <b>Supply</b>             |                                  |   |   |       |                     |                    |     |               |
| Positive supply current   | $I_+$                            | $V_{IN} = V_+$ or GND,                              | Switch ON or OFF                        | Full  | 1.95 V              | 0.1                |     | $\mu\text{A}$ |

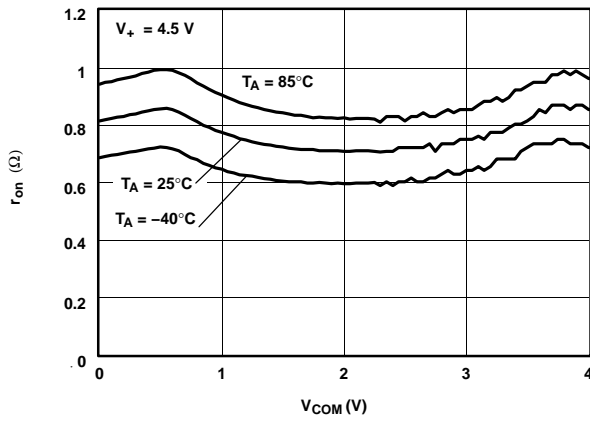
**TYPICAL PERFORMANCE**



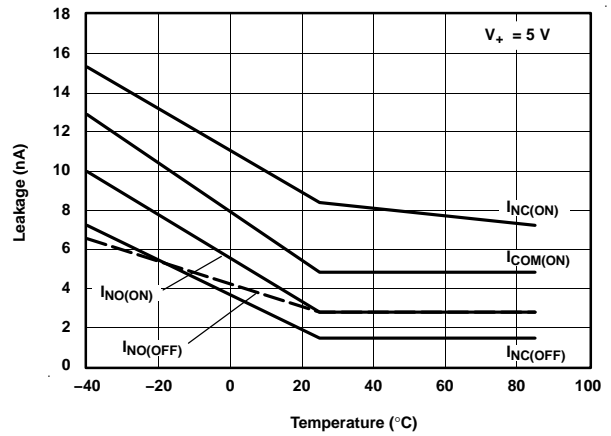
**Figure 1.  $r_{on}$  vs  $V_{COM}$**



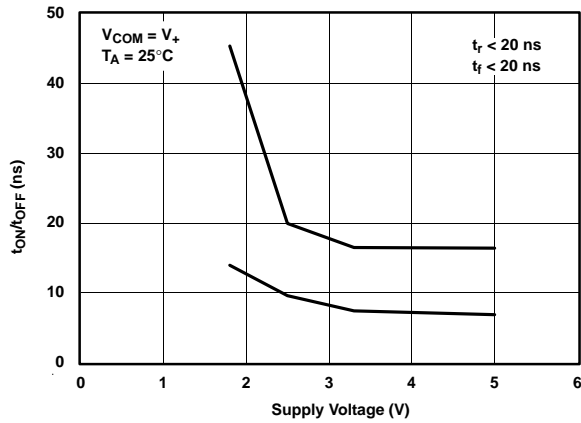
**Figure 2.  $r_{on}$  vs  $V_{COM}$**



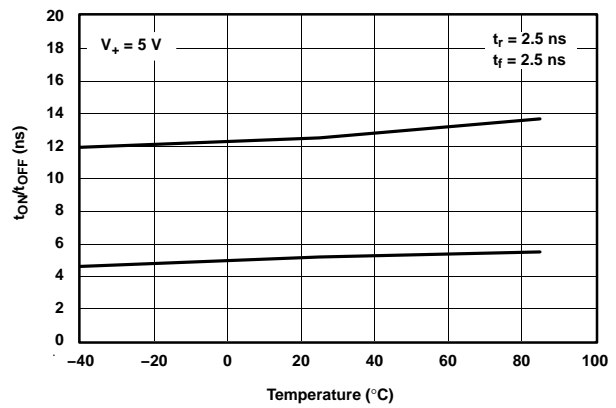
**Figure 3.  $r_{on}$  vs  $V_{COM}$**



**Figure 4. Leakage Current vs Temperature**



**Figure 5.  $t_{ON}/t_{OFF}$  vs  $V_+$**



**Figure 6.  $t_{ON}/t_{OFF}$  vs Temperature**

TYPICAL PERFORMANCE (continued)

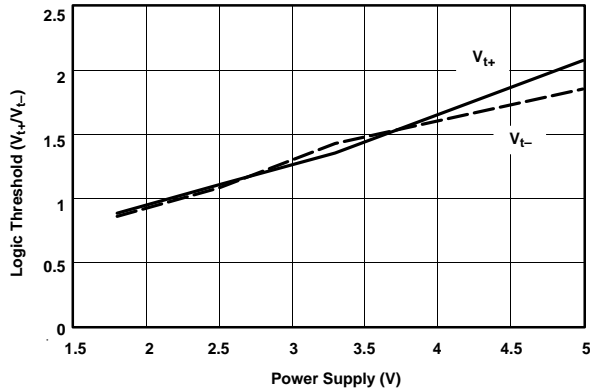


Figure 7. Logic Threshold vs Power Supply

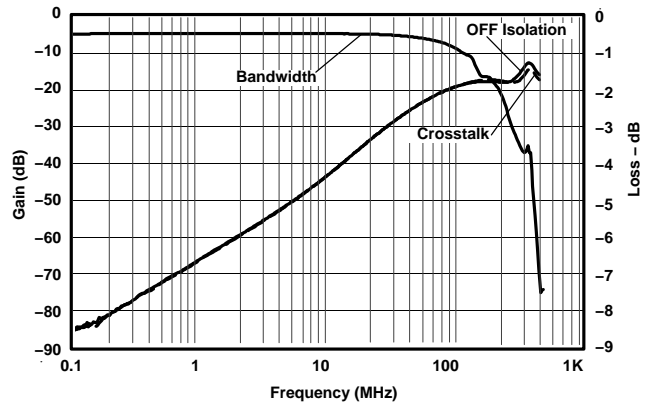


Figure 8. Frequency Response

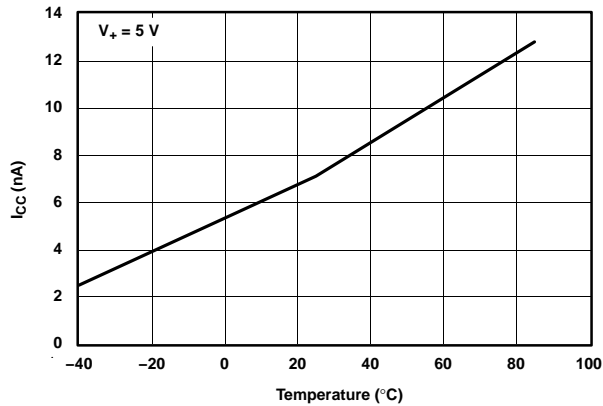


Figure 9. Power-Supply Current vs Temperature

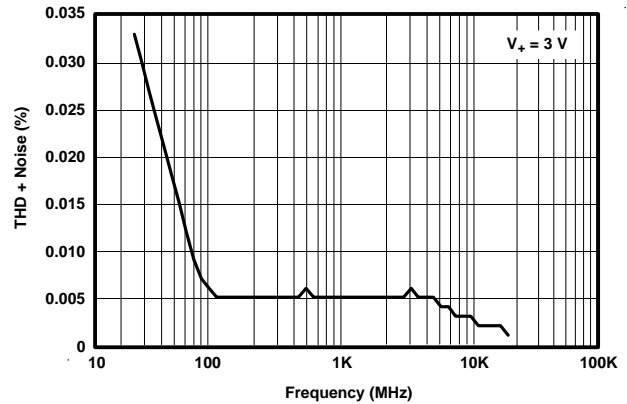


Figure 10. Total Harmonic Distortion (THD) vs Frequency

**PIN DESCRIPTION**

| PIN NO. | NAME           | DESCRIPTION                                |
|---------|----------------|--|
| 1       | NO             | Normally open                              |
| 2       | GND            | Digital ground                             |
| 3       | NC             | Normally closed                            |
| 4       | COM            | Common                                     |
| 5       | V <sub>+</sub> | Power supply                               |
| 6       | IN             | Digital control to connect COM to NO or NC |

**PARAMETER DESCRIPTION**

| SYMBOL                            | DESCRIPTION  |
|-----------------------------------|--|
| V <sub>COM</sub>                  | Voltage at COM   |
| V <sub>NC</sub>                   | Voltage at NC  |
| V <sub>NO</sub>                   | Voltage at NO  |
| r <sub>on</sub>                   | Resistance between COM and NO ports when the channel is ON   |
| r <sub>peak</sub>                 | Peak on-state resistance over a specified voltage range  |
| Δr <sub>on</sub>                  | Difference of r <sub>on</sub> between channels in a specific device  |
| r <sub>on(flat)</sub>             | Difference between the maximum and minimum value of r <sub>on</sub> in a channel over the specified range of conditions  |
| I <sub>NC(OFF)</sub>              | Leakage current measured at the NC port, with the corresponding channel (NC to COM) in the OFF state under worst-case input and output conditions  |
| I <sub>NO(OFF)</sub>              | Leakage current measured at the NO port, with the corresponding channel (NO to COM) in the OFF state   |
| I <sub>NC(ON)</sub>               | Leakage current measured at the NC port, with the corresponding channel (NC to COM) in the ON state and the output (COM) open  |
| I <sub>NO(ON)</sub>               | Leakage current measured at the NO port, with the corresponding channel (NO to COM) in the ON state and the output (COM) open  |
| I <sub>COM(ON)</sub>              | Leakage current measured at the COM port, with the corresponding channel (COM to NO) in the ON state and the output (NO) open  |
| V <sub>IH</sub>                   | Minimum input voltage for logic high for the control input (IN)  |
| V <sub>IL</sub>                   | Maximum input voltage for logic low for the control input (IN)   |
| V <sub>IN</sub>                   | Voltage at IN  |
| I <sub>IH</sub> , I <sub>IL</sub> | Leakage current measured at IN   |
| t <sub>ON</sub>                   | Turn-on time for the switch. This parameter is measured under the specified range of conditions and by the propagation delay between the digital control (IN) signal and analog output (COM or NO) signal when the switch is turning ON.   |
| t <sub>OFF</sub>                  | Turn-off time for the switch. This parameter is measured under the specified range of conditions and by the propagation delay between the digital control (IN) signal and analog output (COM or NO) signal when the switch is turning OFF.   |
| t <sub>BBM</sub>                  | Break-before-make time. This parameter is measured under the specified range of conditions and by the propagation delay between the output of two adjacent analog channels (NC and NO), when the control signal changes state.   |
| Q <sub>C</sub>                    | Charge injection is a measurement of unwanted signal coupling from the control (IN) input to the analog (NO or COM) output. This is measured in coulomb (C) and measured by the total charge induced due to switching of the control input. Charge injection, Q <sub>C</sub> = C <sub>L</sub> × ΔV <sub>COM</sub> , C <sub>L</sub> is the load capacitance and ΔV <sub>COM</sub> is the change in analog output voltage. |
| C <sub>NC(OFF)</sub>              | Capacitance at the NC port when the corresponding channel (NC to COM) is OFF   |
| C <sub>NO(OFF)</sub>              | Capacitance at the NO port when the corresponding channel (NO to COM) is OFF   |
| C <sub>NC(ON)</sub>               | Capacitance at the NC port when the corresponding channel (NC to COM) is ON  |
| C <sub>NO(ON)</sub>               | Capacitance at the NO port when the corresponding channel (NO to COM) is ON  |
| C <sub>COM(ON)</sub>              | Capacitance at the COM port when the corresponding channel (COM to NO) is ON   |
| C <sub>IN</sub>                   | Capacitance of IN  |
| O <sub>ISO</sub>                  | OFF isolation of the switch is a measurement of OFF-state switch impedance. This is measured in dB in a specific frequency, with the corresponding channel (NO to COM) in the OFF state.   |
| X <sub>TALK</sub>                 | Crosstalk is a measurement of unwanted signal coupling from an ON channel to an adjacent ON channel (NC1 to NC2). This is measured in a specific frequency and in dB.  |
| BW                                | Bandwidth of the switch. This is the frequency in which the gain of an ON channel is –3 dB below the DC gain.  |

**TS5A3159-EP**  
**1-Ω SPDT ANALOG SWITCH**

SCDS217B–DECEMBER 2005–REVISED JANUARY 2006

---

**PARAMETER DESCRIPTION (continued)**

| <b>SYMBOL</b> | <b>DESCRIPTION</b>   |
|---------------|--|
| $I_+$         | Static power-supply current with the control (IN) pin at $V_+$ or GND  |
| $\Delta I_+$  | This is the increase in $I_+$ for each control (IN) input that is at the specified voltage, rather than at $V_+$ or GND. |

PARAMETER MEASUREMENT INFORMATION

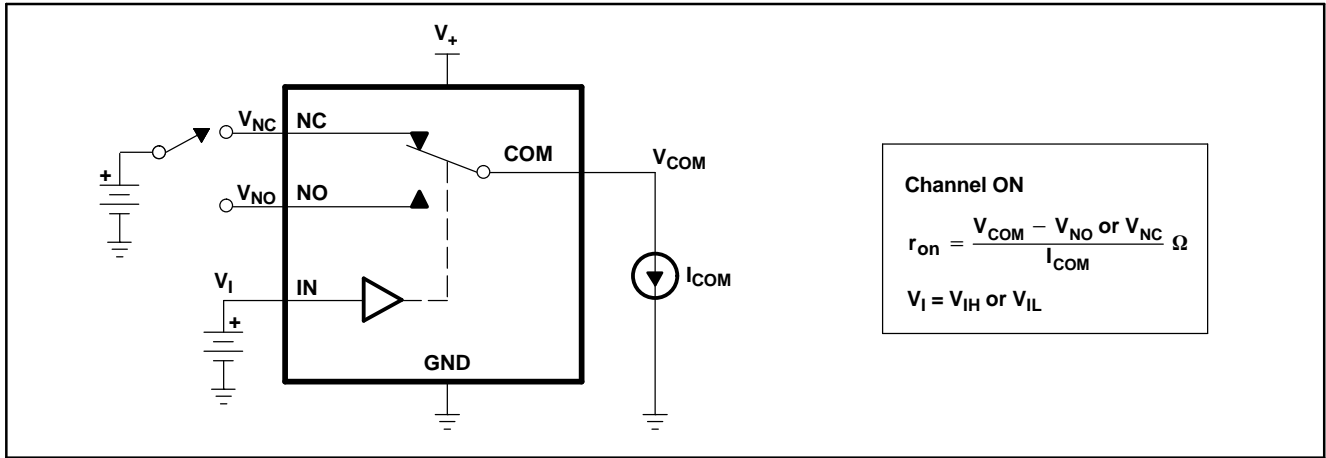


Figure 11. ON-State Resistance ( $r_{on}$ )

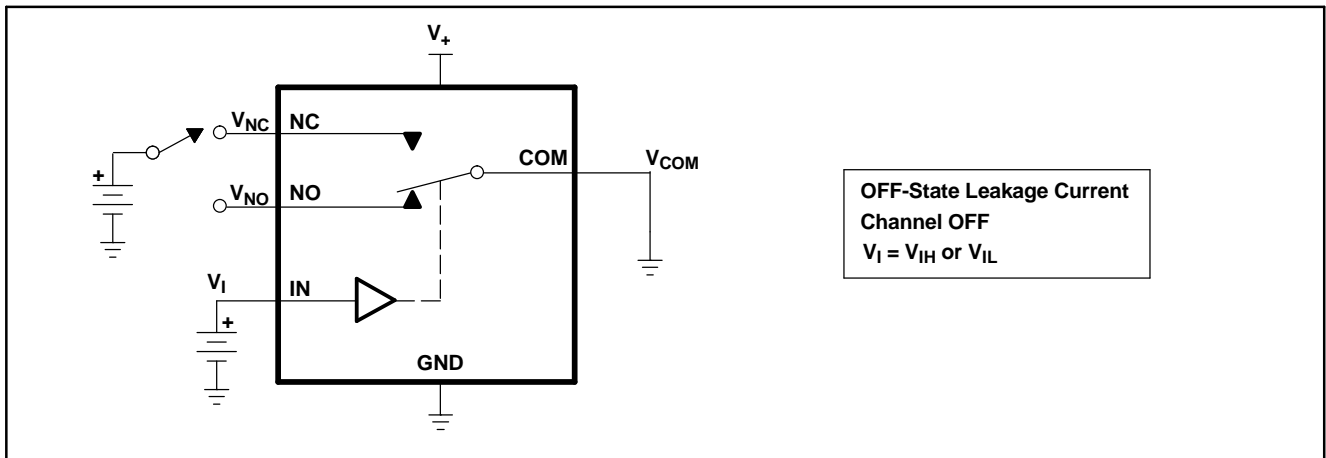


Figure 12. OFF-State Leakage Current ( $I_{NC(OFF)}$ ,  $I_{NO(OFF)}$ )

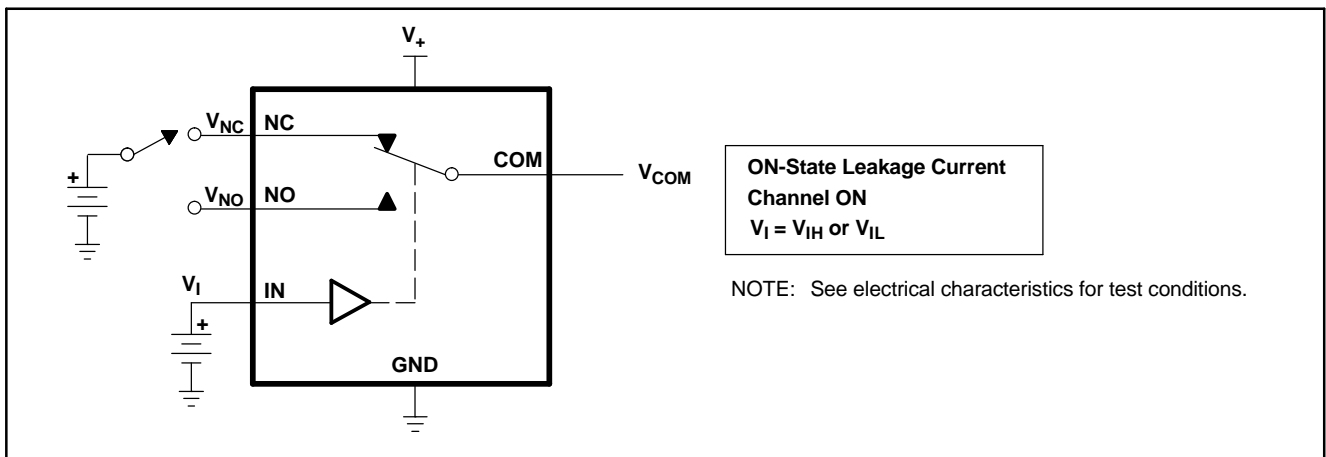


Figure 13. ON-State Leakage Current ( $I_{COM(ON)}$ ,  $I_{NC(ON)}$ ,  $I_{NO(ON)}$ )

PARAMETER MEASUREMENT INFORMATION (continued)

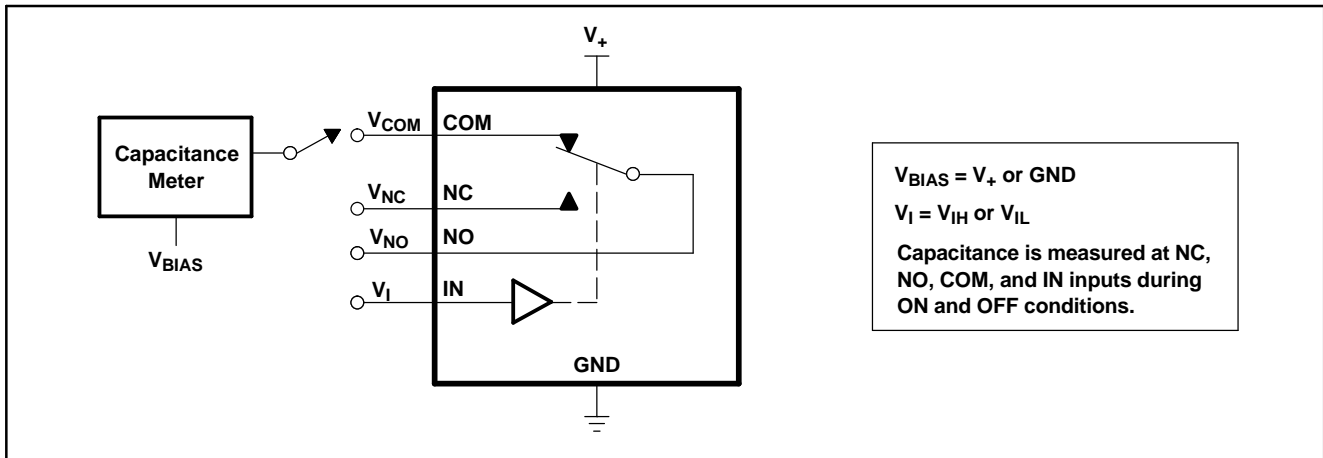
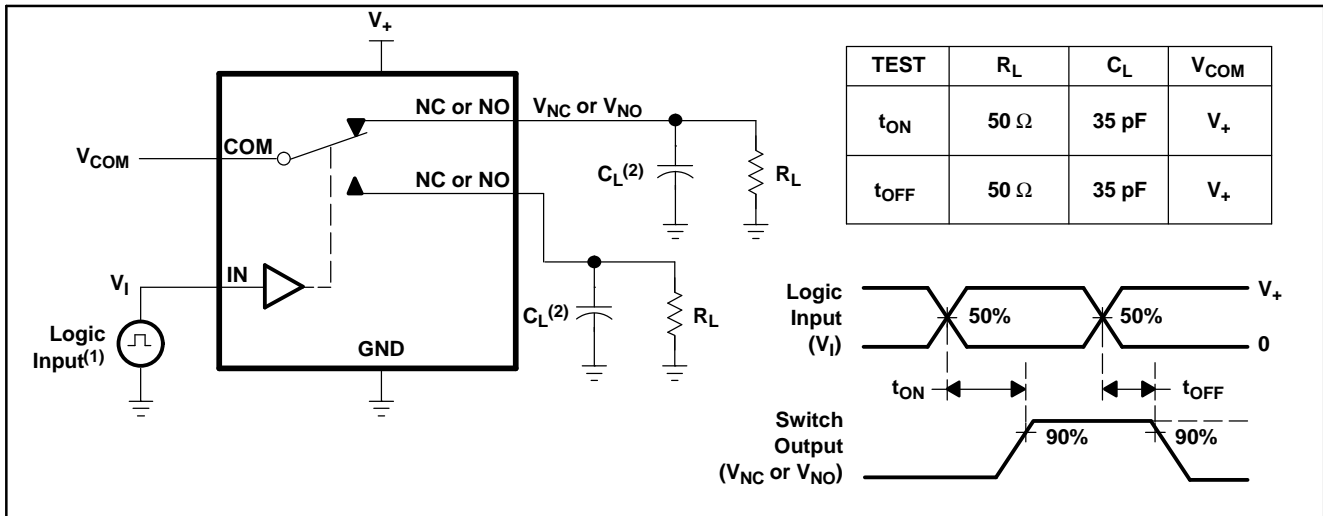


Figure 14. Capacitance ( $C_I$ ,  $C_{COM(ON)}$ ,  $C_{NC(OFF)}$ ,  $C_{NO(OFF)}$ ,  $C_{NC(ON)}$ ,  $C_{NO(ON)}$ )

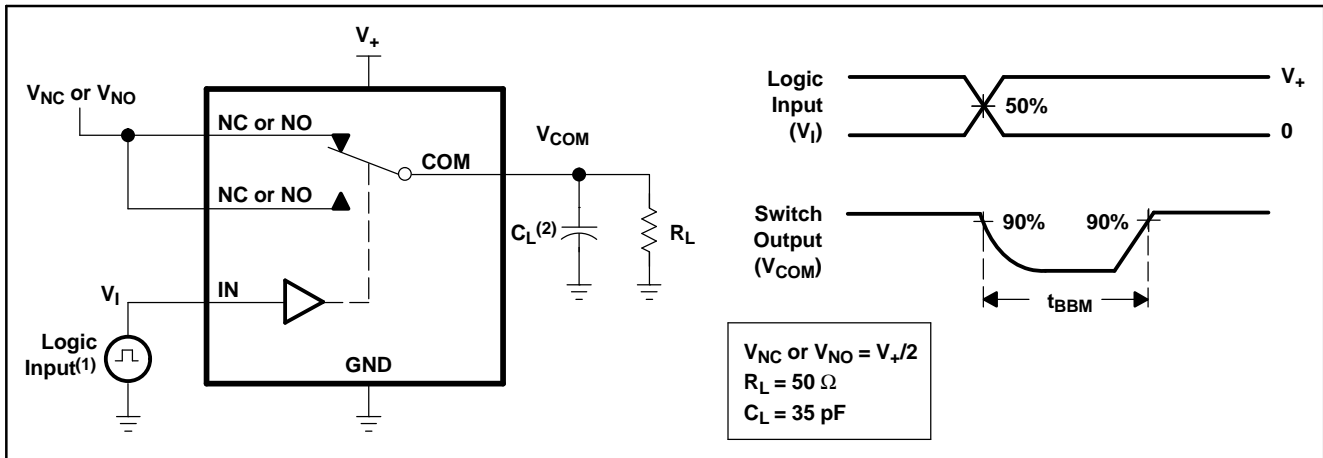


- (1) All input pulses are supplied by generators having the following characteristics: PRR  $\leq$  10 MHz,  $Z_O = 50 \Omega$ ,  $t_r < 5$  ns,
- (2)  $C_L$  includes probe and jig capacitance.

Figure 15. Turn-On ( $t_{ON}$ ) and Turn-Off Time ( $t_{OFF}$ )



PARAMETER MEASUREMENT INFORMATION (continued)



- (1) All input pulses are supplied by generators having the following characteristics: PRR ≤ 10 MHz,  $Z_0 = 50 \Omega$ ,  $t_r < 5 \text{ ns}$ ,  $t_f < 5 \text{ ns}$ .
- (2)  $C_L$  includes probe and jig capacitance.

Figure 16. Break-Before-Make Time ( $t_{\text{BBM}}$ )

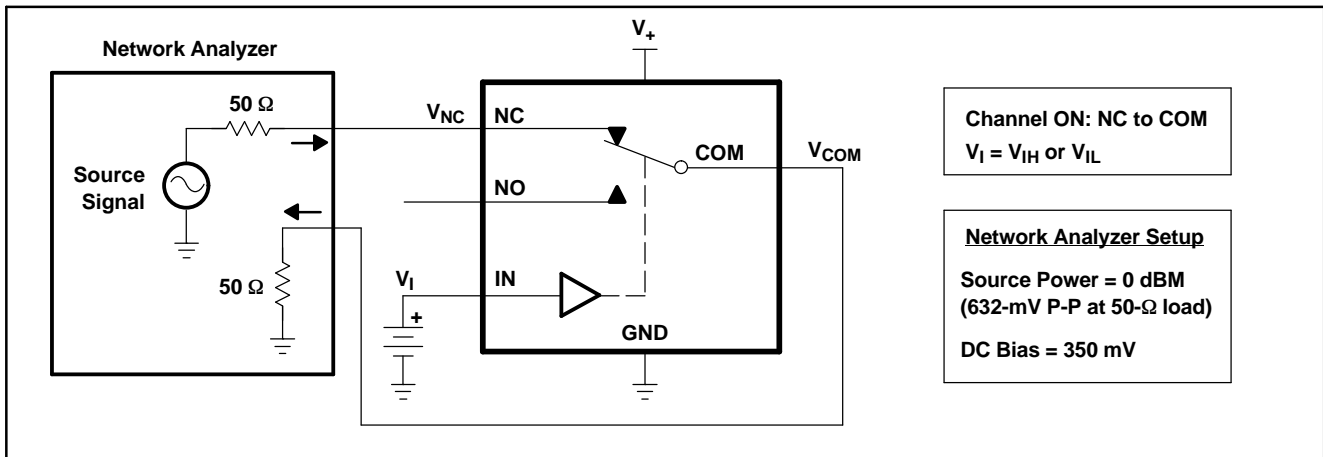


Figure 17. Bandwidth (BW)

PARAMETER MEASUREMENT INFORMATION (continued)

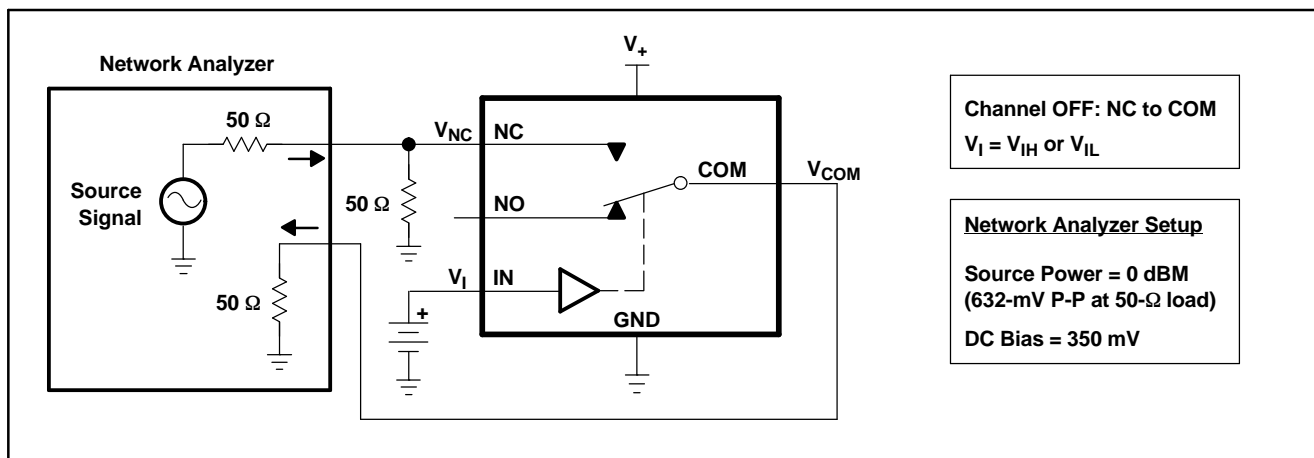


Figure 18. OFF Isolation ( $O_{ISO}$ )

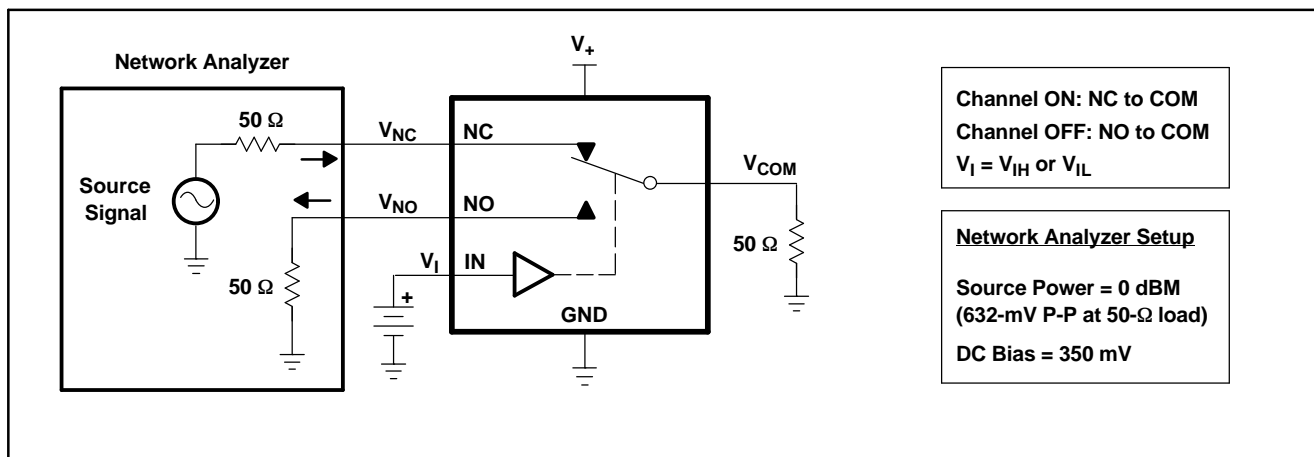
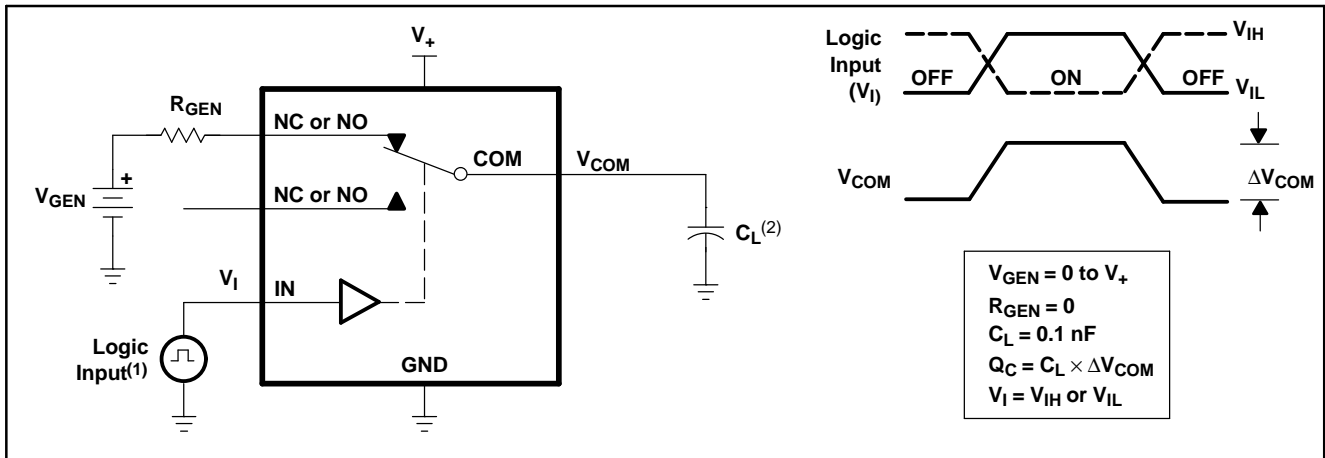


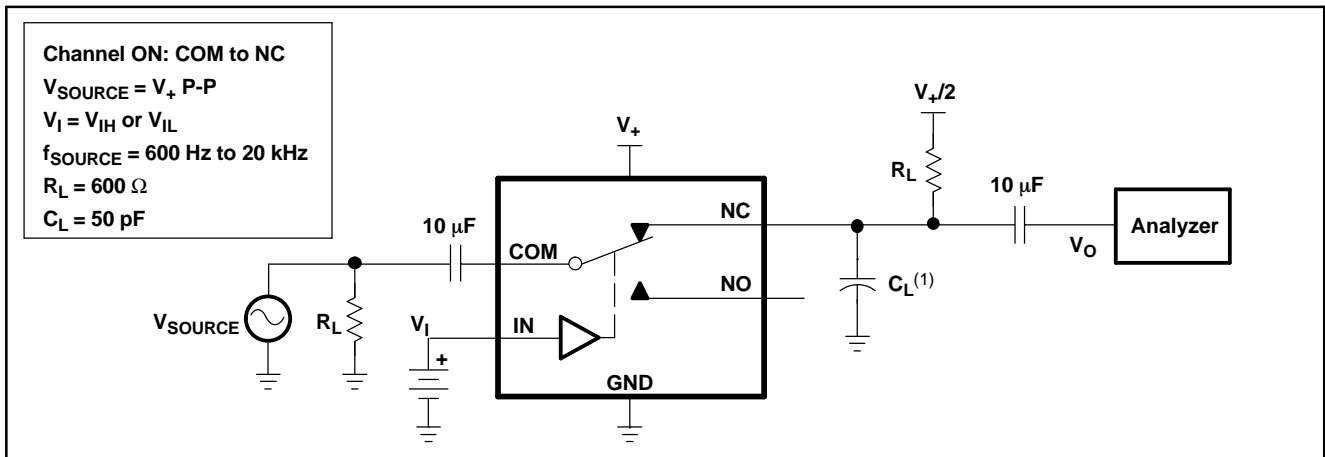
Figure 19. Crosstalk ( $X_{TALK}$ )

PARAMETER MEASUREMENT INFORMATION (continued)



- (1) All input pulses are supplied by generators having the following characteristics:  $PRR \leq 10 \text{ MHz}$ ,  $Z_O = 50 \Omega$ ,  $t_r < 5 \text{ ns}$ ,  $t_f < 5 \text{ ns}$ .
- (2)  $C_L$  includes probe and jig capacitance.

Figure 20. Charge Injection ( $Q_C$ )



- (1)  $C_L$  includes probe and jig capacitance.

Figure 21. Total Harmonic Distortion (THD)

**PACKAGING INFORMATION**

| Orderable Device | Status<br>(1) | Package Type | Package Drawing | Pins | Package Qty | Eco Plan<br>(2) | Lead finish/<br>Ball material<br>(6) | MSL Peak Temp<br>(3) | Op Temp (°C) | Device Marking<br>(4/5) | Samples |
|------------------|---------------|--------------|-----------------|------|-------------|-----------------|--------------------------------------|----------------------|--------------|-------------------------|---------|
| TS5A3159MDBVREP  | ACTIVE        | SOT-23       | DBV             | 6    | 3000        | RoHS & Green    | NIPDAU                               | Level-1-260C-UNLIM   | -55 to 125   | JA8R                    | Samples |
| V62/06613-01XE   | LIFEBUY       | SOT-23       | DBV             | 6    | 3000        | RoHS & Green    | NIPDAU                               | Level-1-260C-UNLIM   | -55 to 125   | JA8R                    |         |

(1) The marketing status values are defined as follows:

**ACTIVE:** Product device recommended for new designs.

**LIFEBUY:** TI has announced that the device will be discontinued, and a lifetime-buy period is in effect.

**NRND:** Not recommended for new designs. Device is in production to support existing customers, but TI does not recommend using this part in a new design.

**PREVIEW:** Device has been announced but is not in production. Samples may or may not be available.

**OBSOLETE:** TI has discontinued the production of the device.

(2) **RoHS:** TI defines "RoHS" to mean semiconductor products that are compliant with the current EU RoHS requirements for all 10 RoHS substances, including the requirement that RoHS substance do not exceed 0.1% by weight in homogeneous materials. Where designed to be soldered at high temperatures, "RoHS" products are suitable for use in specified lead-free processes. TI may reference these types of products as "Pb-Free".

**RoHS Exempt:** TI defines "RoHS Exempt" to mean products that contain lead but are compliant with EU RoHS pursuant to a specific EU RoHS exemption.

**Green:** TI defines "Green" to mean the content of Chlorine (Cl) and Bromine (Br) based flame retardants meet JS709B low halogen requirements of <=1000ppm threshold. Antimony trioxide based flame retardants must also meet the <=1000ppm threshold requirement.

(3) MSL, Peak Temp. - The Moisture Sensitivity Level rating according to the JEDEC industry standard classifications, and peak solder temperature.

(4) There may be additional marking, which relates to the logo, the lot trace code information, or the environmental category on the device.

(5) Multiple Device Markings will be inside parentheses. Only one Device Marking contained in parentheses and separated by a "~" will appear on a device. If a line is indented then it is a continuation of the previous line and the two combined represent the entire Device Marking for that device.

(6) Lead finish/Ball material - Orderable Devices may have multiple material finish options. Finish options are separated by a vertical ruled line. Lead finish/Ball material values may wrap to two lines if the finish value exceeds the maximum column width.

**Important Information and Disclaimer:**The information provided on this page represents TI's knowledge and belief as of the date that it is provided. TI bases its knowledge and belief on information provided by third parties, and makes no representation or warranty as to the accuracy of such information. Efforts are underway to better integrate information from third parties. TI has taken and continues to take reasonable steps to provide representative and accurate information but may not have conducted destructive testing or chemical analysis on incoming materials and chemicals. TI and TI suppliers consider certain information to be proprietary, and thus CAS numbers and other limited information may not be available for release.

In no event shall TI's liability arising out of such information exceed the total purchase price of the TI part(s) at issue in this document sold by TI to Customer on an annual basis.

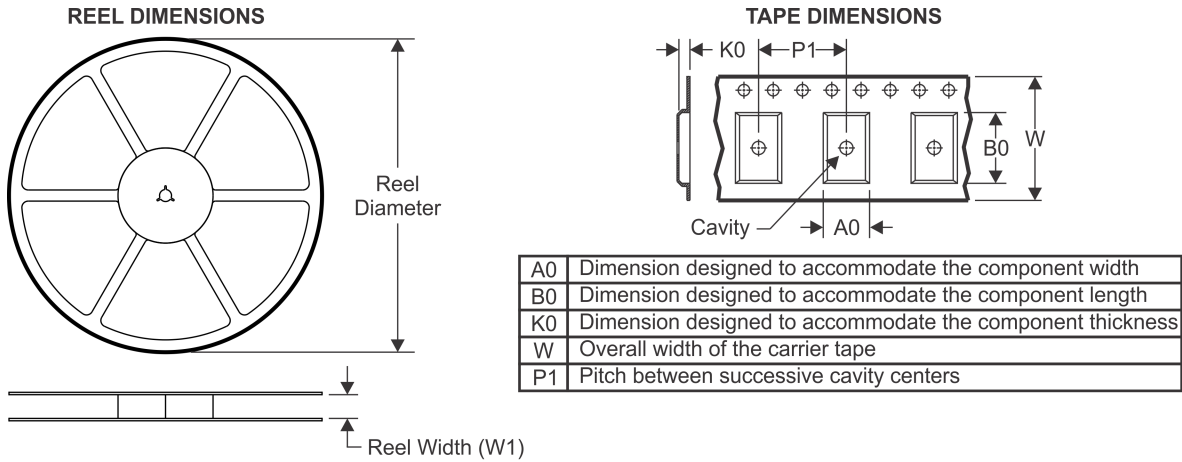
**OTHER QUALIFIED VERSIONS OF TS5A3159-EP :**

- Catalog : [TS5A3159](#)
- Automotive : [TS5A3159-Q1](#)

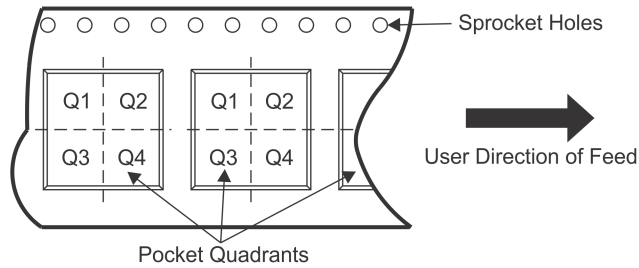
## NOTE: Qualified Version Definitions:

- Catalog - TI's standard catalog product
- Automotive - Q100 devices qualified for high-reliability automotive applications targeting zero defects

## TAPE AND REEL INFORMATION



### QUADRANT ASSIGNMENTS FOR PIN 1 ORIENTATION IN TAPE



\*All dimensions are nominal

| Device          | Package Type | Package Drawing | Pins | SPQ  | Reel Diameter (mm) | Reel Width W1 (mm) | A0 (mm) | B0 (mm) | K0 (mm) | P1 (mm) | W (mm) | Pin1 Quadrant |
|-----------------|--------------|-----------------|------|------|--------------------|--------------------|---------|---------|---------|---------|--------|---------------|
| TS5A3159MDBVREP | SOT-23       | DBV             | 6    | 3000 | 180.0              | 8.4                | 3.23    | 3.17    | 1.37    | 4.0     | 8.0    | Q3            |

TAPE AND REEL BOX DIMENSIONS



\*All dimensions are nominal

| Device          | Package Type | Package Drawing | Pins | SPQ  | Length (mm) | Width (mm) | Height (mm) |
|-----------------|--------------|-----------------|------|------|-------------|------------|-------------|
| TS5A3159MDBVREP | SOT-23       | DBV             | 6    | 3000 | 202.0       | 201.0      | 28.0        |



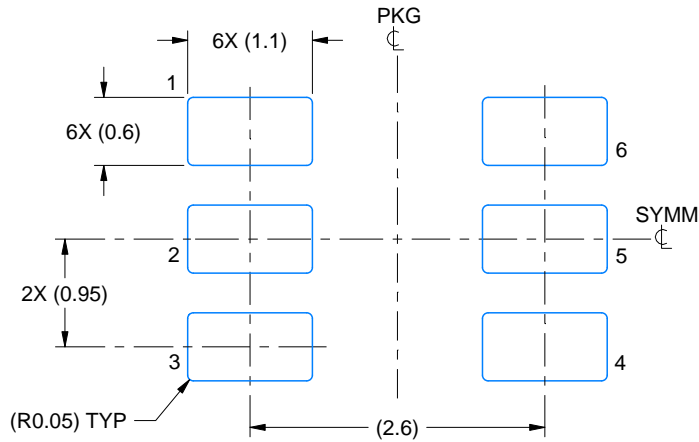


# EXAMPLE BOARD LAYOUT

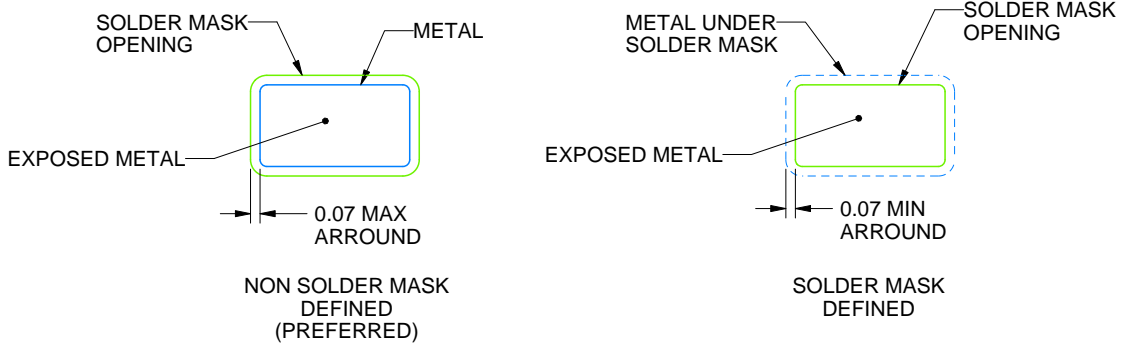
DBV0006A

SOT-23 - 1.45 mm max height

SMALL OUTLINE TRANSISTOR



LAND PATTERN EXAMPLE  
EXPOSED METAL SHOWN  
SCALE:15X



SOLDER MASK DETAILS

4214840/E 02/2024

NOTES: (continued)

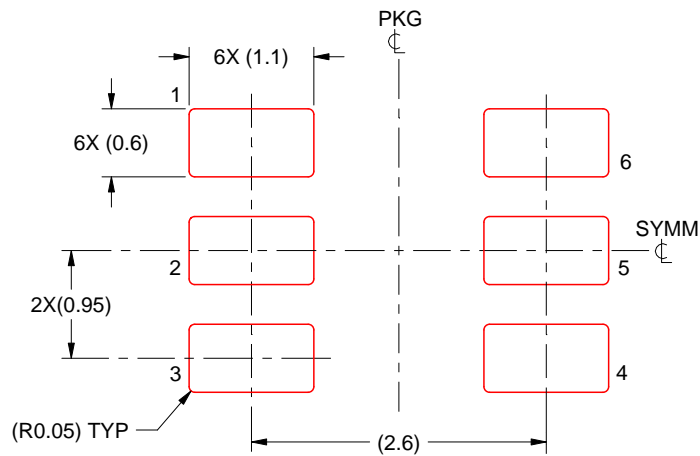
- 6. Publication IPC-7351 may have alternate designs.
- 7. Solder mask tolerances between and around signal pads can vary based on board fabrication site.

# EXAMPLE STENCIL DESIGN

DBV0006A

SOT-23 - 1.45 mm max height

SMALL OUTLINE TRANSISTOR



SOLDER PASTE EXAMPLE  
BASED ON 0.125 mm THICK STENCIL  
SCALE:15X

4214840/E 02/2024

NOTES: (continued)

8. Laser cutting apertures with trapezoidal walls and rounded corners may offer better paste release. IPC-7525 may have alternate design recommendations.
9. Board assembly site may have different recommendations for stencil design.

## IMPORTANT NOTICE AND DISCLAIMER

TI PROVIDES TECHNICAL AND RELIABILITY DATA (INCLUDING DATA SHEETS), DESIGN RESOURCES (INCLUDING REFERENCE DESIGNS), APPLICATION OR OTHER DESIGN ADVICE, WEB TOOLS, SAFETY INFORMATION, AND OTHER RESOURCES "AS IS" AND WITH ALL FAULTS, AND DISCLAIMS ALL WARRANTIES, EXPRESS AND IMPLIED, INCLUDING WITHOUT LIMITATION ANY IMPLIED WARRANTIES OF MERCHANTABILITY, FITNESS FOR A PARTICULAR PURPOSE OR NON-INFRINGEMENT OF THIRD PARTY INTELLECTUAL PROPERTY RIGHTS.

These resources are intended for skilled developers designing with TI products. You are solely responsible for (1) selecting the appropriate TI products for your application, (2) designing, validating and testing your application, and (3) ensuring your application meets applicable standards, and any other safety, security, regulatory or other requirements.

These resources are subject to change without notice. TI grants you permission to use these resources only for development of an application that uses the TI products described in the resource. Other reproduction and display of these resources is prohibited. No license is granted to any other TI intellectual property right or to any third party intellectual property right. TI disclaims responsibility for, and you will fully indemnify TI and its representatives against, any claims, damages, costs, losses, and liabilities arising out of your use of these resources.

TI's products are provided subject to [TI's Terms of Sale](#) or other applicable terms available either on [ti.com](https://www.ti.com) or provided in conjunction with such TI products. TI's provision of these resources does not expand or otherwise alter TI's applicable warranties or warranty disclaimers for TI products.

TI objects to and rejects any additional or different terms you may have proposed.

Mailing Address: Texas Instruments, Post Office Box 655303, Dallas, Texas 75265  
Copyright © 2024, Texas Instruments Incorporated