

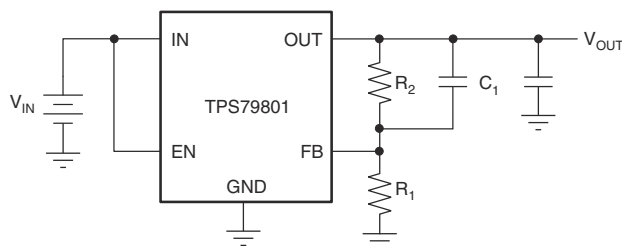
# TPS798-Q1 Automotive, 50mA, 3V to 50V, Micropower, Low-Dropout Linear Regulator

## 1 Features

- AEC-Q100 qualified for automotive applications:
  - Temperature grade 1:  $-40^{\circ}\text{C}$  to  $+125^{\circ}\text{C}$ ,  $T_A$
- Wide input voltage range: 3V to 50V
- Low quiescent current: 40 $\mu\text{A}$  (typical)
- Low dropout voltage: 300mV (typical)
- Output current: 50mA
- No input protection diodes needed
- Adjustable output: From 1.275V to 28V
- Quiescent current in shutdown: 1 $\mu\text{A}$
- Stable with 1 $\mu\text{F}$  output capacitor
- Stable with aluminum, tantalum, or ceramic capacitors
- Reverse input-battery protection
- Reverse output current flow protection
- Thermal limiting
- Available in an 8-pin HVSSOP PowerPAD device package

## 2 Applications

- Low-current, high-voltage regulators
- Regulators for battery-powered systems
- Telecom
- Automotives



$$V_{OUT} = 1.275 \text{ V} (1 + R_2 / R_1) + I_{FB} R_2$$

$$V_{FB} = 1.275 \text{ V}$$

$$I_{FB} = 0.2 \mu\text{A at } 25^{\circ}\text{C}$$

$$\text{Output Range} = 1.275 \text{ V to } 28 \text{ V}$$

### Typical Application

## 3 Description

The TPS798-Q1 is the first device in a line of 50V high-voltage micropower low-dropout (LDO) linear regulators. This device is capable of supplying 50mA output current with a dropout voltage of only 300mV. Created for low quiescent current, high-voltage (50V) applications, the 40 $\mu\text{A}$  operating and 1 $\mu\text{A}$  quiescent current in shutdown makes the TPS798-Q1 designed for battery-powered or high-voltage systems. Quiescent current is also well-controlled in dropout.

Other features of the TPS798-Q1 include the ability to operate with low equivalent series resistance (ESR) ceramic output capacitors. This device is stable with only 1 $\mu\text{F}$  on the output; most older devices require from 10 $\mu\text{F}$  to 100 $\mu\text{F}$  tantalum capacitors for stability. Small ceramic capacitors can be used without the necessary addition of ESR, as is common with other regulators. Internal protection circuitry includes reverse input-battery protection, reverse output current protection, current limiting, and thermal limiting to protect the device in various fault conditions.

This device is available in a fixed output voltage of 5V (TPS79850) and with an adjustable output voltage with a 1.275V reference voltage (TPS79801). The TPS798-Q1 regulator is available in a 8-pin HVSSOP PowerPAD (DGN) package with an exposed pad for enhanced thermal management capability.

### Package Information

PART NUMBER	PACKAGE <sup>(1)</sup>	PACKAGE SIZE <sup>(2)</sup>
TPS798-Q1	DGN (HVSSOP, 8)	3mm × 4.9mm

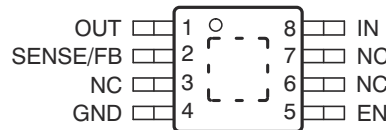
- (1) For more information, see the [Mechanical, Packaging, and Orderable Information](#).
- (2) The package size (length × width) is a nominal value and includes pins, where applicable.



## Table of Contents

<b>1 Features</b> .....	1	6.4 Device Functional Modes.....	12
<b>2 Applications</b> .....	1	<b>7 Application and Implementation</b> .....	13
<b>3 Description</b> .....	1	7.1 Application Information.....	13
<b>4 Pin Configuration and Functions</b> .....	2	7.2 Typical Application.....	13
<b>5 Specifications</b> .....	3	7.3 Power Supply Recommendations.....	14
5.1 Absolute Maximum Ratings.....	3	7.4 Layout.....	16
5.2 ESD Ratings.....	3	<b>8 Device and Documentation Support</b> .....	17
5.3 Recommended Operating Conditions.....	3	8.1 Receiving Notification of Documentation Updates... 17	
5.4 Thermal Information.....	4	8.2 Support Resources.....	17
5.5 Electrical Characteristics.....	4	8.3 Trademarks.....	17
5.6 Dissipation Ratings.....	5	8.4 Electrostatic Discharge Caution.....	17
5.7 Typical Characteristics.....	6	8.5 Glossary.....	17
<b>6 Detailed Description</b> .....	9	<b>9 Revision History</b> .....	17
6.1 Overview.....	9	<b>10 Mechanical, Packaging, and Orderable Information</b> .....	17
6.2 Functional Block Diagrams.....	9		
6.3 Feature Description.....	10		

## 4 Pin Configuration and Functions



The exposed thermal pad is connected to ground through pin 4 (GND).

**Figure 4-1. DGN Package, 8-Pin HVSSOP With PowerPAD™ (Top View)**

**Table 4-1. Pin Functions**

PIN		TYPE	DESCRIPTION
NAME	NO.		
EN	5	I	Enable pin. Driving the EN pin high turns on the regulator over full operating range. Driving this pin low puts the regulator into shutdown mode over full operating range.
GND	4	O	Ground. The exposed thermal pad is connected to ground through this pin.
IN	8	I	Input pin. Place a 0.1µF ceramic or greater capacitor from this pin to ground to provide stability. Both input and output capacitor grounds must be tied back to the device ground with no significant impedance between them.
NC	3, 6, 7	—	No internal connection
OUT	1	O	Regulated output voltage pin. A small (1µF) capacitor is needed from this pin to ground to provide stability.
SENSE/FB	2	I	This pin is the input to the control loop error amplifier. Use this pin to set the output voltage of the device.

## 5 Specifications

### 5.1 Absolute Maximum Ratings

over operating free-air temperature range (unless otherwise noted)<sup>(1)</sup>

			MIN	MAX	UNIT
V <sub>IN</sub>	Input voltage range	IN <sup>(2)</sup>	-65	60	V
		OUT	-0.3	28	
		FB	-0.3	7	
		EN <sup>(2)</sup>	-65	60	
		Enable to IN differential	0.6	V <sub>IN</sub>	
T <sub>J</sub>	Junction temperature range <sup>(3)</sup>	-40	125	°C	
T <sub>stg</sub>	Storage temperature	-65	150	°C	

- (1) Stresses beyond those listed under *Absolute Maximum Ratings* may cause permanent damage to the device. These are stress ratings only, which do not imply functional operation of the device at these or any other conditions beyond those indicated under *Recommended Operating Conditions*. Exposure to absolute-maximum-rated conditions for extended periods may affect device reliability.
- (2) Transient: 500ms for V<sub>IN</sub> > 50V.
- (3) The junction temperature must not exceed 125°C. See [Figure 5-13](#) to determine the maximum ambient operating temperature versus the supply voltage and load current. The safe operating area curves assume a 50°C/W thermal impedance and may need to be adjusted to match actual system thermal performance.

### 5.2 ESD Ratings

			VALUE	UNIT
V <sub>(ESD)</sub>	Electrostatic discharge	Human body model (HBM), per AEC Q100-002 <sup>(1)</sup>	±2000	V
		Charged device model (CDM), per AEC Q100-011	±1000	

- (1) AEC Q100-002 indicates HBM stressing is done in accordance with the ANSI/ESDA/JEDEC JS-001 specification.

### 5.3 Recommended Operating Conditions

			MIN	MAX	UNIT
V <sub>IN</sub>	Input voltage	IN	-65	50	V
		OUT	-0.3	28	
		FB	-0.3	7	
		EN	-65	50	
I <sub>OUT</sub>	Output current		50	mA	
T <sub>J</sub>	Operating junction temperature <sup>(1) (2) (3)</sup>	-40	125	°C	
T <sub>A</sub>	Ambient free-air temperature	-40	105	°C	

- (1) Operating conditions are limited by maximum junction temperature. The regulated output voltage specification does not apply for all possible combinations of input voltage and output current. When operating at maximum input voltage, the output current range must be limited. When operating at maximum output current, the input voltage range must be limited.
- (2) The TPS798-Q1 is specified to meet performance specifications from -40°C to 125°C operating junction temperature. Specifications over the full operating junction temperature range are specified by design, characterization, and correlation with statistical process controls.
- (3) This device includes overtemperature protection that is intended to protect the device during momentary overload conditions. Junction temperature exceeds 125°C (minimum) when overtemperature protection is active. Continuous operation above the specified maximum operating junction temperature may impair device reliability.

## 5.4 Thermal Information

THERMAL METRIC <sup>(1)</sup>		TPS798-Q1	UNIT
		DGN (HVSSOP)	
		8 PINS	
R <sub>θJA</sub>	Junction-to-ambient thermal resistance (JEDEC 51-5 <sup>(2)</sup> )	57.1	°C/W
	Junction-to-ambient thermal resistance (JEDEC 51-7 <sup>(3)</sup> )	130	°C/W
R <sub>θJC(top)</sub>	Junction-to-case (top) thermal resistance	50.3	°C/W
R <sub>θJB</sub>	Junction-to-board thermal resistance	30.6	°C/W
Ψ <sub>JT</sub>	Junction-to-top characterization parameter	1.5	°C/W
Ψ <sub>JB</sub>	Junction-to-board characterization parameter	30.3	°C/W
R <sub>θJC(bot)</sub>	Junction-to-case (bottom) thermal resistance	6.5	°C/W

- (1) For more information about traditional and new thermal metrics, see the [Semiconductor and IC Package Thermal Metrics application note](#).
- (2) The thermal data is based on using JEDEC 51-5. The copper pad is soldered to the thermal land pattern and using 5 by 8 thermal array (vias). Correct attachment procedure must be incorporated.
- (3) The thermal data is based on using JEDEC 51-7. The copper pad is soldered to the thermal land. No thermal vias. Correct attachment procedure must be incorporated.

## 5.5 Electrical Characteristics

V<sub>IN</sub> = V<sub>OUT(NOM)</sub> + 1V or 4V (whichever is greater for either fixed or adjustable versions), I<sub>LOAD</sub> = 1mA, V<sub>EN</sub> = 3V, and C<sub>OUT</sub> = C<sub>IN</sub> = 2.2μF (unless otherwise noted); for the TPS79801, the FB pin is tied to V<sub>OUT</sub>; typical values are at T<sub>J</sub> = 25°C

PARAMETER		TEST CONDITIONS	T <sub>J</sub> <sup>(1)</sup>	MIN	TYP	MAX	UNIT	
V <sub>IN</sub>	Minimum input voltage	I <sub>LOAD</sub> = 50mA	Full range		3	4	V	
Fixed V <sub>OUT</sub>	Initial output voltage accuracy	V <sub>IN</sub> = V <sub>OUT nom</sub> + 0.5V	25°C	-1.5%		1.5%		
	Output voltage accuracy over line, load, and full temperature range	V <sub>IN</sub> = V <sub>OUT nom</sub> + 1V to 50V, I <sub>LOAD</sub> = 1mA to 50mA	Full range	-3%		3%		
Adjustable V <sub>OUT</sub>	Initial output voltage accuracy	V <sub>IN</sub> = 3V	25°C	1.256	1.275	1.294	V	
	Output voltage accuracy over line, load, and full temperature range	V <sub>IN</sub> = 4V to 50V, I <sub>LOAD</sub> = 1mA to 50mA	Full range	1.237	1.275	1.313	V	
ΔV <sub>OUT</sub> /ΔV <sub>IN</sub>	Line regulation, adjustable V <sub>OUT</sub>	ΔV <sub>IN</sub> = 3V to 50V	Full range			13	mV	
	Line regulation, TPS79850	V <sub>IN</sub> = V <sub>OUT nom</sub> + 0.5V to 50V				15	mV	
ΔV <sub>OUT</sub> /ΔI <sub>OUT</sub>	Load regulation, adjustable V <sub>OUT</sub>	ΔI <sub>LOAD</sub> = 1mA to 50mA	25°C			20	mV	
			Full range			32		
	Load regulation, fixed V <sub>OUT</sub>	ΔI <sub>LOAD</sub> = 1mA to 50mA	25°C			50	mV	
			Full range			90		
Adjustable V <sub>OUT</sub>	Output voltage range <sup>(2) (3)</sup>		Full range	1.275		28	V	
V <sub>DO</sub>	Dropout voltage <sup>(4) (5)</sup>	V <sub>IN</sub> = V <sub>OUT(NOM)</sub> - 0.1V	25°C		85	150	mV	
			Full range			190		
		I <sub>LOAD</sub> = 10mA, V <sub>IN</sub> = V <sub>OUT(NOM)</sub> - 0.1V	25°C		170	260		
			Full range			350		
I <sub>LOAD</sub> = 50mA, V <sub>IN</sub> = V <sub>OUT(NOM)</sub> - 0.1V	25°C		300	370				
	Full range			550				
I <sub>GND</sub>	GND pin current <sup>(6)</sup>	V <sub>IN</sub> = V <sub>OUT(NOM)</sub>	I <sub>LOAD</sub> = 0mA	Full range		30	80	μA
			I <sub>LOAD</sub> = 1mA	Full range		100	180	
			I <sub>LOAD</sub> = 10mA	Full range		400	700	
			I <sub>LOAD</sub> = 50mA	Full range		1.8	3.3	
V <sub>N</sub>	Output voltage noise	C <sub>OUT</sub> = 10μF, I <sub>LOAD</sub> = 50mA, BW = 10Hz to 100kHz, V <sub>IN</sub> = 4.3V, V <sub>OUT</sub> = 3.3V (adjustable used)	25°C		100		μV <sub>RMS</sub>	
I <sub>FB</sub>	FB pin bias current <sup>(7)</sup>	V <sub>IN</sub> = 3V	25°C		0.05	0.2	μA	

## 5.5 Electrical Characteristics (continued)

$V_{IN} = V_{OUT(NOM)} + 1V$  or  $4V$  (whichever is greater for either fixed or adjustable versions),  $I_{LOAD} = 1mA$ ,  $V_{EN} = 3V$ , and  $C_{OUT} = C_{IN} = 2.2\mu F$  (unless otherwise noted); for the TPS79801, the FB pin is tied to  $V_{OUT}$ ; typical values are at  $T_J = 25^\circ C$

PARAMETER		TEST CONDITIONS	$T_J$ (1)	MIN	TYP	MAX	UNIT
$V_{EN}$	EN pin high (enabled)(8)	OFF to ON, $V_{IN} = 6V$	Full range			1.5	V
	EN pin low (shutdown)(8)	ON to OFF, $V_{IN} = 6V$	25°C	0.4 V			V
	EN pin low (shutdown)(8)	ON to OFF, $V_{IN} = 6V$	Full range	0.2 V			V
$I_{EN}$	EN pin current(8)	$V_{EN} = 0V$ , $V_{IN} = 6V$ , $I_{LOAD} = 0mA$	Full range		0.4	2	$\mu A$
		$V_{EN} = 3V$ , $V_{IN} = 6V$ , $I_{LOAD} = 0mA$	Full range		0.4	0.5	
$I_{shutdown}$	GND pin current(6)	$V_{IN} = 6V$ , $V_{EN} = 0V$ , $I_{LOAD} = 0mA$	Full range		3	25	$\mu A$
PSRR	Power-supply rejection ratio	$V_{IN} = 4.3V$ , $V_{OUT} = 3.3V$ , $V_{RIPPLE} = 0.5V_{PP}$ , $f_{RIPPLE} = 120Hz$ , $I_{LOAD} = 50mA$	25°C		65		dB
$I_{LIMIT}$	Fixed current limit(9)	$\Delta V_{OUT} = V_{OUT(NOM)} - 0.1V$	Full range	60		200	mA
	Adjustable current limit	$\Delta V_{OUT} = V_{OUT(NOM)} - 0.1V$	Full range	60		200	mA
$I_{RL}$	Input reverse leakage current(reverse battery test)	$V_{IN} = -60V$ , $V_{OUT} = open$ , $C_{IN}$ open	Full range			6	mA
$I_{RO}$	Reverse output current(10)	$V_{OUT} = V_{OUT(NOM)}$ , $V_{IN} = ground$	25°C		19	25	$\mu A$
$T_{SD}$	Thermal shutdown temperature ( $T_J$ ) (11)	Shutdown, temperature increasing		135			°C
		Reset, temperature decreasing		135			

- (1) Full range  $T_J = -40^\circ C$  to  $125^\circ C$ .
- (2) This parameter is tested and specified under pulse load conditions such that  $T_J = T_A$ . This device is 100% production tested at  $T_A = 25^\circ C$ . Performance at full range is specified by design, characterization, bench to ATE correlation testing, and other statistical process controls.
- (3) This device is limited by a maximum junction temperature of  $T_J = 125^\circ C$ . The regulated output voltage specification cannot be applied to all combinations of various  $V_{IN}$ ,  $V_{OUT}$ , ambient temperature, and  $I_{OUT}$  conditions. When operating with large voltage differentials across the device, the output load must be limited so as not to violate the maximum junction temperature for a given ambient temperature.
- (4) In the adjustable version test, the output uses an external voltage divider. This resistor voltage divider is made up of  $R_1 = 215k\Omega$  and  $R_2$  (bottom resistor) =  $340k\Omega$ . This configuration preloads the output with  $6\mu A$ .
- (5) By definition, dropout voltage is the minimum input voltage needed to maintain a given output voltage at a specific load current. For dropout testing, minimum  $V_{IN} = V_{OUT(NOM)} \times 0.96$ . This specification ensures that the device is in dropout and takes into account the output voltage tolerance over the full temperature range.
- (6) Ground pin current is tested with  $V_{IN} = V_{OUT(NOM)}$  or  $3V$ , whichever is greater.
- (7) FB pin current flows into the FB pin.
- (8) EN pin current flows into the EN pin.
- (9) Current limit is tested with  $V_{IN} = V_{OUT(NOM)} + 0.5V$  or  $3V$ , whichever is greater.  $V_{OUT}$  is forced to  $V_{OUT(NOM)} - 0.1V$  and the output current is measured.
- (10) Reverse output current is tested with the IN pin tied to ground and the output forced to  $V_{OUT(NOM)} + 0.1V$ . This current flows into the OUT pin and out of the GND pin and then measured.
- (11) Specified by design.

## 5.6 Dissipation Ratings

see (1)

BOARD	PACKAGE	DERATING FACTOR ABOVE $T_A = 25^\circ C$	$T_A \leq 25^\circ C$ POWER RATING	$T_A = 70^\circ C$ POWER RATING	$T_A = 85^\circ C$ POWER RATING
High-K(2)	DGN	16.6mW/°C	1.83W	1.08W	0.833W

- (1) See the [Thermal Considerations](#) for more information related to thermal design.
- (2) The JEDEC High-K (1s) board design used to derive this data was a 4.5 inch  $\times$  3 inch, 2-layer board with 2 ounce copper traces on top of the board.

### 5.7 Typical Characteristics

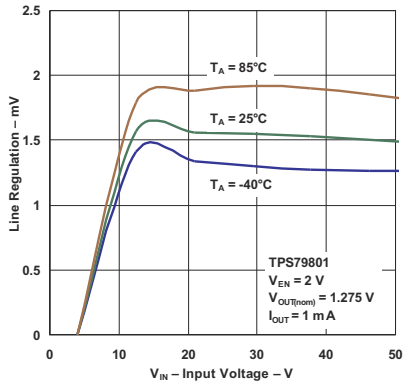


Figure 5-1. Line Regulation vs Input Voltage

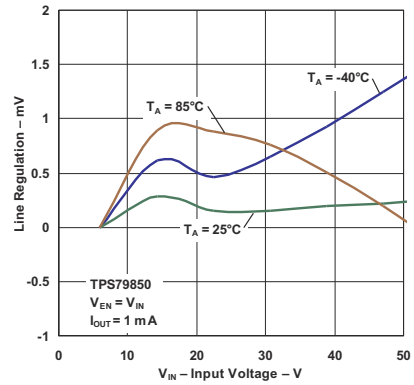


Figure 5-2. Line Regulation vs Input Voltage

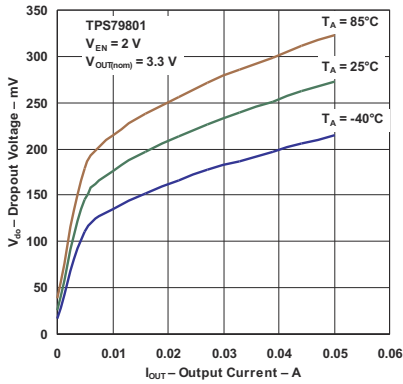


Figure 5-3. Dropout Voltage vs Output Current

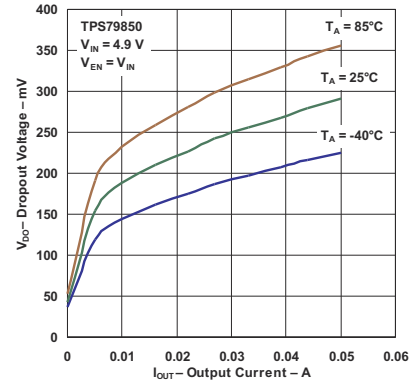


Figure 5-4. Dropout Voltage vs Output Current

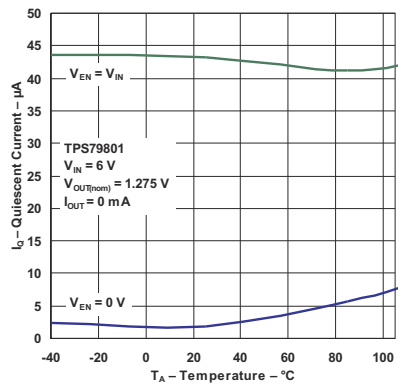


Figure 5-5. Quiescent Current vs Temperature

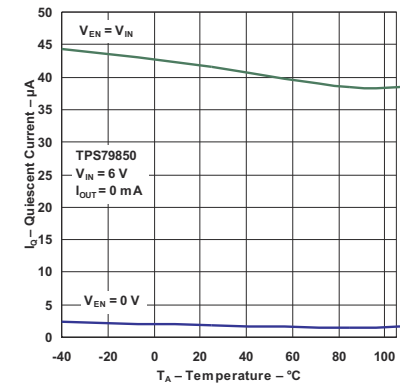


Figure 5-6. Quiescent Current vs Temperature

### 5.7 Typical Characteristics (continued)

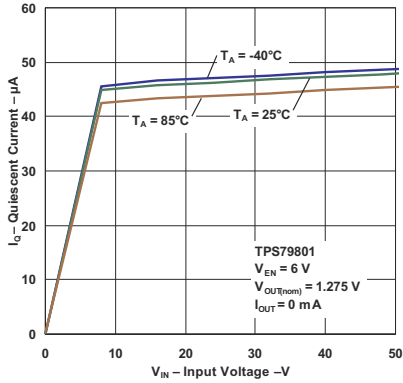


Figure 5-7. Quiescent Current vs Input Voltage

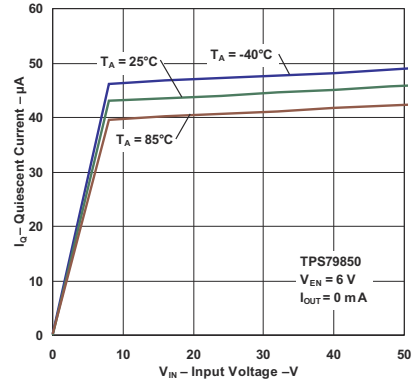


Figure 5-8. Quiescent Current vs Input Voltage

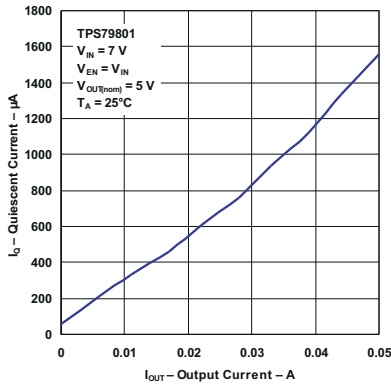


Figure 5-9. Quiescent Current vs Output Current

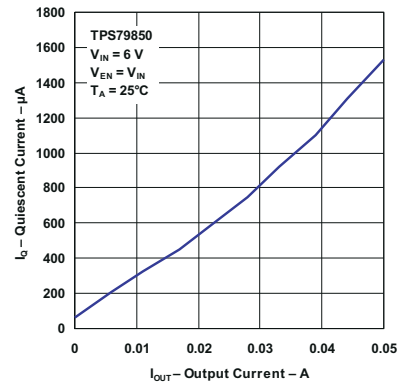


Figure 5-10. Quiescent Current vs Output Current

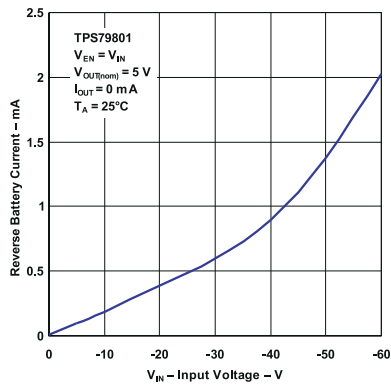


Figure 5-11. Reverse Battery Leakage vs Input Voltage

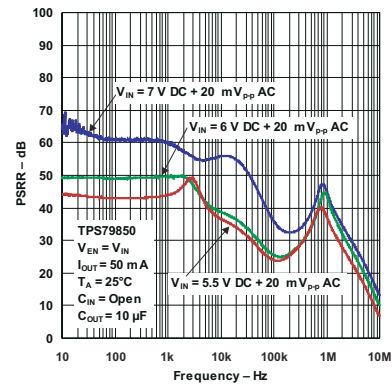


Figure 5-12. Power Supply Ripple Rejection vs Frequency

### 5.7 Typical Characteristics (continued)

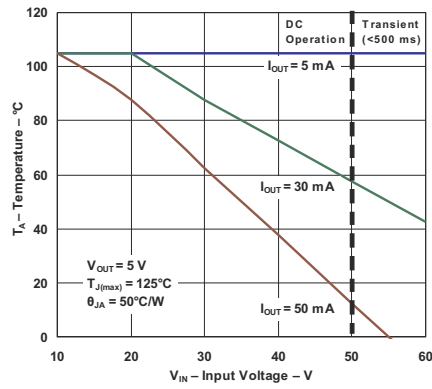


Figure 5-13. Safe Operating Area

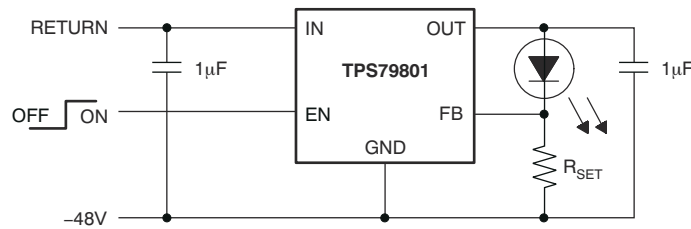


## 6 Detailed Description

### 6.1 Overview

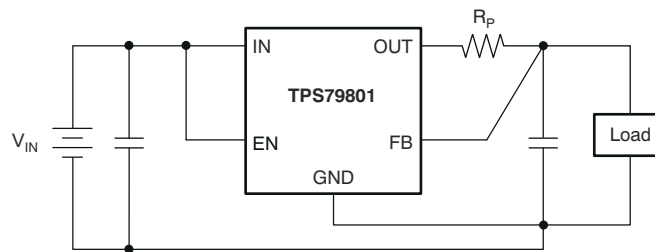
The TPS798-Q1 is a 50mA high-voltage LDO regulator with micropower quiescent current and shutdown. The device is capable of supplying 50mA at a dropout voltage of 300mV (typical). The low operating quiescent current (40µA) drops to 1µA in shutdown. In addition to the low quiescent current, the TPS798-Q1 incorporates several protection features that make it ideal for battery-powered applications.

The device is protected against both reverse-input and reverse-output voltages. In battery-backup applications, where the output can be held up by a backup battery when the input is pulled to ground, the TPS798-Q1 acts as if a diode is in series with the device output and prevents reverse current flow. [Figure 6-1](#) and [Figure 6-2](#) illustrate two typical applications.



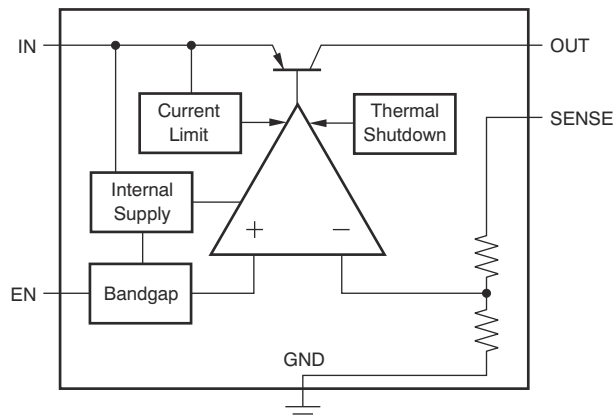
$$I_{LED} = 1.275V / R_{SET} \text{ } -48V \text{ can vary from } -4V \text{ to } -50V.$$

**Figure 6-1. Constant Brightness for Indicator LED Over Wide Input Voltage Range**

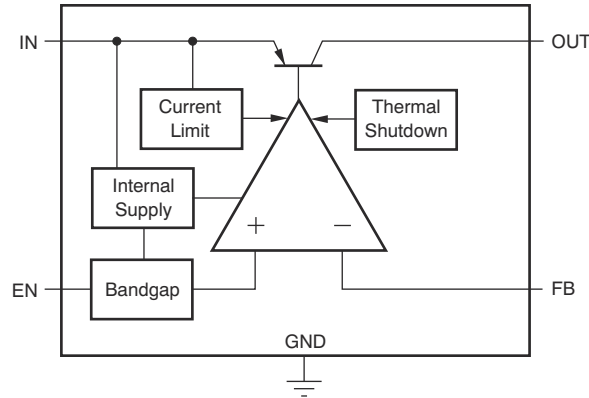


**Figure 6-2. Kelvin Sense Connection**

### 6.2 Functional Block Diagrams



**Figure 6-3. Fixed Voltage Output Version**

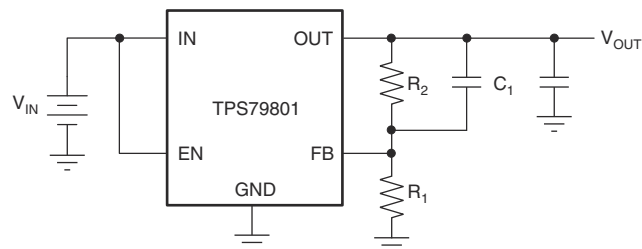


**Figure 6-4. Adjustable Voltage Output Version**

### 6.3 Feature Description

#### 6.3.1 Adjustable Operation

The TPS798-Q1 has an output voltage range of 1.275V to 28V. The output voltage is set by the ratio of two external resistors as shown in Figure 6-5. The feedback loop monitors the output to maintain the voltage at the adjust pin at 1.275V referenced to ground. The current in  $R_1$  is then equal to  $1.275V / R_1$ , and the current in  $R_2$  is the current in  $R_1$  plus the FB pin bias current. The FB pin bias current,  $0.2\mu A$  at  $25^\circ C$ , flows through  $R_2$  into the FB pin. The output voltage can be calculated using the formula in Figure 6-5. The value of  $R_1$  must be less than  $250k\Omega$  to minimize errors in the output voltage caused by the FB pin bias current. When in shutdown, the output is turned off and the divider current is zero.



$$V_{OUT} = 1.275 V (1 + R_2 / R_1) + I_{FB} R_2$$

$$V_{FB} = 1.275 V$$

$$I_{FB} = 0.2 \mu A \text{ at } 25^\circ C$$

$$\text{Output Range} = 1.275 V \text{ to } 28 V$$

**Figure 6-5. Adjustable Operation**

A  $100pF$  capacitor ( $C_1$ ) placed in parallel with the top resistor ( $R_2$ ) of the output divider is necessary for stability and transient performance of the adjustable TPS798-Q1. The impedance of  $C_1$  at  $10kHz$  must be less than the value of  $R_2$ .

The adjustable device is tested and specified with the FB pin tied to the OUT pin and a  $1mA$  DC load (unless otherwise specified) for an output voltage of  $1.275V$ . Specifications for output voltages greater than  $1.275V$  are proportional to the ratio of the desired output voltage to  $1.275V$  ( $V_{OUT} / 1.275V$ ). For example, load regulation for an output current change of  $1mA$  to  $50mA$  is  $-10mV$  (typical) at  $V_{OUT} = 1.275V$ .

At  $V_{OUT} = 12V$ , load regulation is:

$$(12V / 1.275V) \times (-10mV) = -94mV \tag{1}$$

### 6.3.2 Output Capacitance and Transient Response

The TPS798-Q1 is designed to be stable with a wide range of output capacitors. The ESR of the output capacitor affects stability, most notably with small capacitors. To prevent oscillations, use a minimum output capacitor of 1 $\mu$ F with an ESR of 3 $\Omega$  or less. The TPS798-Q1 is a micropower device, and output transient response is a function of output capacitance. Larger values of output capacitance decrease the peak deviations and provide improved transient response for larger load current changes. Bypass capacitors, used to decouple individual components powered by the TPS798-Q1, increase the effective output capacitor value.

Extra consideration must be given to the use of ceramic capacitors. Ceramic capacitors are manufactured with a variety of dielectrics, each with different behavior over temperature and applied voltage. The most common dielectrics used are Z5U, Y5V, X5R, and X7R. The Z5U and Y5V dielectrics are good for providing high capacitances in a small package, but exhibit strong voltage and temperature coefficients. When used with a 5V regulator, a 10 $\mu$ F Y5V capacitor can exhibit an effective value as low as 1 $\mu$ F to 2 $\mu$ F over the operating temperature range. The X5R and X7R dielectrics result in more stable characteristics and are more suitable for use as the output capacitor. The X7R type has better stability across temperature, while the X5R is less expensive and is available in higher values.

Voltage and temperature coefficients are not the only sources of problems. Some ceramic capacitors have a piezoelectric response. A piezoelectric device generates voltage across the terminals because of mechanical stress, similar to the way a piezoelectric accelerometer or microphone works. For a ceramic capacitor, the stress can be induced by vibrations in the system or thermal transients.

### 6.3.3 Calculating Junction Temperature

Given an output voltage of 5V, an input voltage range of 15V to 24V, an output current range of 0mA to 50mA, and a maximum ambient temperature of 50°C, the maximum junction temperature is calculated as follows.

The power dissipated ( $P_{DISS}$ ) by the DGN package is equal to:

$$I_{OUT(MAX)}(V_{IN(MAX)} - V_{OUT}) + I_{GND}(V_{IN(MAX)}) \quad (2)$$

where:

- $I_{OUT(MAX)} = 50\text{mA}$
- $V_{IN(MAX)} = 24\text{V}$
- $V_{OUT} = 5\text{V}$
- $I_{GND}$  at ( $I_{OUT} = 50\text{mA}$ ,  $V_{IN} = 24\text{V}$ ) = 1mA

Therefore,

$$P_{DISS} = 50\text{mA} (24\text{V} - 5\text{V}) + 1\text{mA} (24\text{V}) = 0.974\text{W} \quad (3)$$

The thermal resistance is approximately 60°C/W, based on JEDEC 51-5 profile. Therefore, the junction temperature rise above ambient is approximately equal to:

$$0.974\text{W} \times 60^\circ\text{C/W} = 58.44^\circ\text{C} \quad (4)$$

The maximum junction temperature is then equal to the maximum junction temperature rise above ambient plus the maximum ambient temperature or:

$$T_J \text{ max} = 50^\circ\text{C} + 58.44^\circ\text{C} = 108.44^\circ\text{C} \quad (5)$$

### 6.3.4 Protection Features

The TPS798-Q1 incorporates several protection features that make the device designed for use in battery-powered circuits. In addition to the normal protection features associated with monolithic regulators, such as current limiting and thermal limiting, the device is protected against reverse-input voltages, and reverse currents from output to input.

Current limit protection and thermal-overload protection are intended to protect the device against current overload conditions at the output of the device. The junction temperature must not exceed 125°C.

The input of the device withstands reverse voltages of –60V. Current flow into the device is limited to less than 6mA (typically, less than 100µA), and no negative voltage appears at the output. The TPS798-Q1 protects both the device and the load. This architecture also provides protection against batteries that can be plugged in backwards.

The FB pin of the adjustable device can be pulled above or below ground by as much as 7V without damaging the device. If the input is left open or grounded, the FB pin behaves as an open circuit when pulled below ground, or as a large resistor (typically, 100kΩ) in series with a diode when pulled above ground. If the input is powered by a voltage source, pulling the FB pin below the reference voltage increases the output voltage. This configuration causes the output to go to a unregulated high voltage. Pulling the FB pin above the reference voltage turns off all output current.

In situations where the FB pin is connected to a resistor divider that pulls the FB pin above the 7V clamp voltage if the output is pulled high, the FB pin input current must be limited to less than 5mA. For example, a resistor divider provides a regulated 1.5V output from the 1.275V reference when the output is forced to 28V. The top resistor of the resistor divider must be chosen to limit the current into the FB pin to less than 5mA when the FB pin is at 7V. The 21V difference between the OUT and FB pins divided by the 5mA maximum current into the FB pin yields a minimum top resistor value of 5.8kΩ.

In circuits where a backup battery is required, several different input and output conditions can occur. The output voltage can be held up while the input is either pulled to ground, pulled to some intermediate voltage, or is left open. The rise in reverse output current above 7V occurs from the breakdown of the 7V clamp on the FB pin. With a resistor divider on the regulator output, this current is reduced, depending on the size of the resistor divider.

When the IN pin of the TPS798-Q1 is forced below the OUT pin, or the OUT pin is pulled above the IN pin, input current typically drops to less than 0.6mA. This scenario can occur if the input of the TPS798-Q1 is connected to a discharged (low voltage) battery and the output is held up by either a backup battery or a second regulator circuit. The state of the EN pin has no effect on the reverse output current when the output is pulled above the input.

## 6.4 Device Functional Modes

### 6.4.1 Low-Voltage Tracking

At low input voltages, the regulator drops out of regulation and the output voltage tracks input minus a voltage based on the load current and switch resistance. This allows for a smaller input capacitor and can possibly eliminate the need of using a boost convertor during cold-crank conditions.

## 7 Application and Implementation

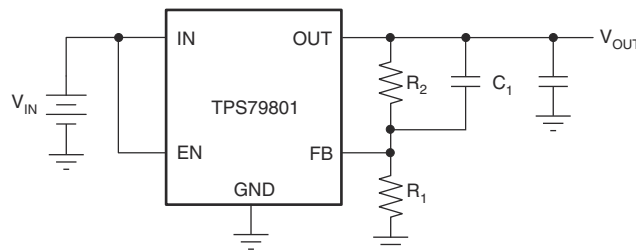
### Note

Information in the following applications sections is not part of the TI component specification, and TI does not warrant its accuracy or completeness. TI's customers are responsible for determining suitability of components for their purposes, as well as validating and testing their design implementation to confirm system functionality.

### 7.1 Application Information

Figure 7-1 shows typical application circuits for the TPS79801-Q1 device. Based on the end-application, different values of external components can be used.

### 7.2 Typical Application



$$V_{OUT} = 1.275 \text{ V} (1 + R_2 / R_1) + I_{FB} R_2$$

$$V_{FB} = 1.275 \text{ V}$$

$$I_{FB} = 0.2 \mu\text{A at } 25^\circ\text{C}$$

$$\text{Output Range} = 1.275 \text{ V to } 28 \text{ V}$$

**Figure 7-1. Adjustable Operation Example**

#### 7.2.1 Design Requirements

Table 7-1 lists the design parameters for this example.

**Table 7-1. Design Parameters**

DESIGN PARAMETER	EXAMPLE VALUE
Input voltage range	3V to 50V
Output voltage	5V
Output current rating	50mA
Output capacitor range	1μF to 100μF

#### 7.2.2 Detailed Design Procedure

To begin the design process, determine the following:

1. Input voltage range
2. Output voltage
3. Output current rating
4. Output capacitor

## 7.2.3 Application Curves

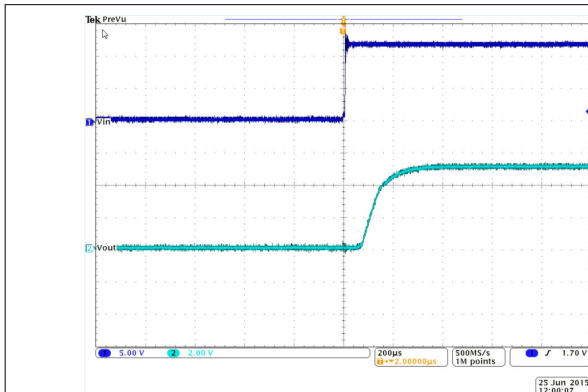


Figure 7-2. CH1: Vin, CH2: Vout Power-Up Waveform (Load = 50mA)

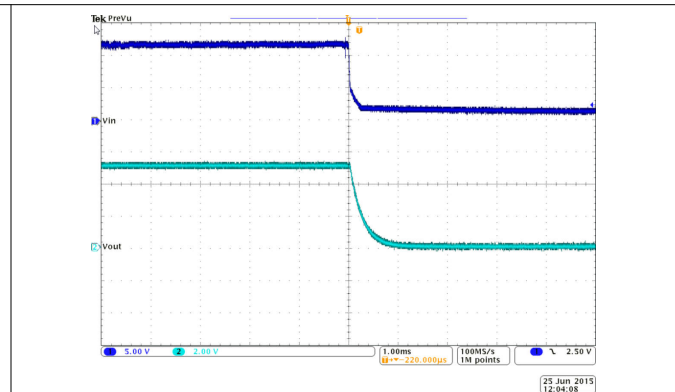


Figure 7-3. CH1: Vin, CH2: Vout Power-Down Waveform (Load = 50mA)

## 7.3 Power Supply Recommendations

### 7.3.1 Thermal Considerations

The power handling capability of the device is limited by the maximum rated junction temperature (125°C). The power dissipated by the device consists of two components:

- Output current multiplied by the input/output voltage differential:  $I_{OUT} \times (V_{IN} - V_{OUT})$
- GND pin current multiplied by the input voltage:  $I_{GND} \times V_{IN}$

The GND pin current can be found by examining the GND pin current curves in the [Typical Characteristics](#). Power dissipation is equal to the sum of the two components listed previously.

The TPS798-Q1 series regulators have internal thermal limiting designed to protect the device during overload conditions. Do not exceed the maximum junction temperature rating of 125°C. All sources of thermal resistance from junction to ambient must be carefully considered. Additional heat sources mounted nearby must also be considered.

For surface-mount devices, heat sinking is accomplished by using the heat-spreading capabilities of the printed-circuit-board (PCB) and its copper traces. Copper board stiffeners and plated through-holes can also be used to spread the heat generated by power devices.

### 7.3.2 Thermal Layout Considerations

The amount of heat that an LDO linear regulator generates is directly proportional to the amount of power the device dissipates during operation. All integrated circuits have a maximum allowable junction temperature ( $T_J \text{ max}$ ) above which normal operation is not assured. The operating environment must be designed so that the operating junction temperature ( $T_J$ ) does not exceed the maximum junction temperature ( $T_J \text{ max}$ ). The two primary environmental variables that can be used to improve thermal performance are air flow and external heat sinks. The purpose of this section is to help determine the proper operating environment for a linear regulator that operates at a specific power level.

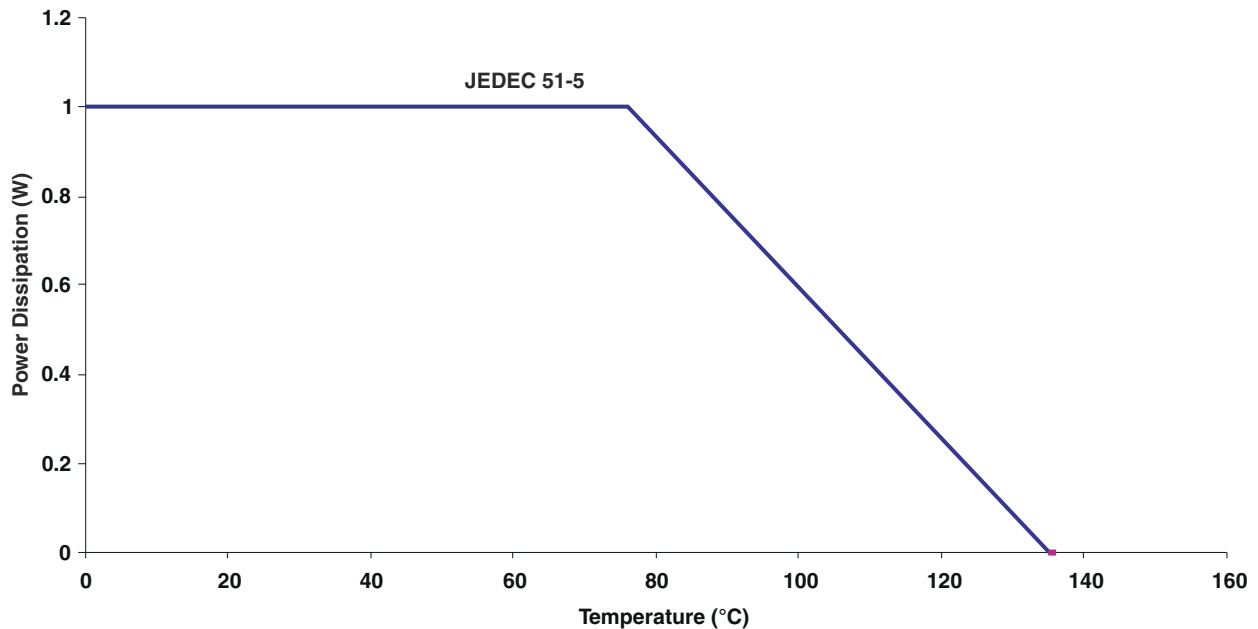
In general, the maximum expected power ( $P_D \text{ max}$ ) consumed by a linear regulator is computed as shown in Equation 6:

$$P_{D\text{max}} = (V_{\text{IN(avg)}} - V_{\text{OUT(avg)}}) \times I_{\text{OUT(avg)}} + V_{\text{I(avg)}} \times I_{\text{Q}} \quad (6)$$

where:

- $V_{\text{IN(avg)}}$  is the average input voltage
- $V_{\text{OUT(avg)}}$  is the average output voltage
- $I_{\text{OUT(avg)}}$  is the average output current
- $I_{\text{Q}}$  is the quiescent current

For most TI LDO regulators, the quiescent current is insignificant compared to the average output current; therefore, the term  $V_{\text{IN(avg)}} \times I_{\text{Q}}$  can be ignored. The operating junction temperature is computed by adding the ambient temperature ( $T_A$ ) and the increase in temperature as a result of the regulator power dissipation. The temperature rise is computed by multiplying the maximum expected power dissipation by the sum of the thermal resistances between the junction and the case ( $R_{\theta\text{JC}}$ ), the case to heat sink ( $R_{\theta\text{CS}}$ ), and the heat sink to ambient ( $R_{\theta\text{SA}}$ ). Thermal resistances are measurements of how effectively an object dissipates heat. Typically, the larger the device, the more surface area available for power dissipation and the lower the device thermal resistance. Figure 7-4 shows the relationship between power dissipation and temperature.



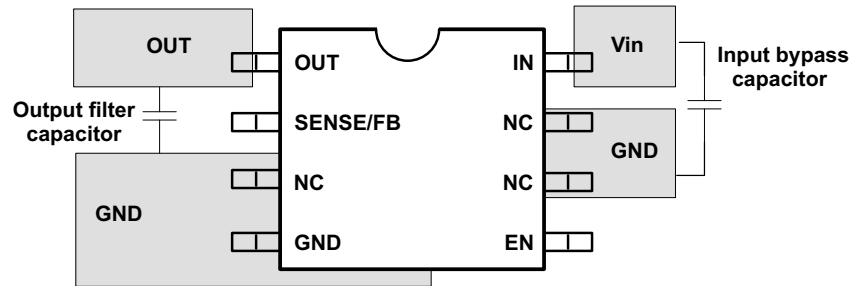
**Figure 7-4. Power Dissipation vs Temperature**

## 7.4 Layout

### 7.4.1 Layout Guidelines

- Do not place any of the capacitors on the opposite side of the PCB from where the regulator is installed. TI strongly discourages using vias and long traces because of the negative impact on system performance. Vias and long traces can also cause instability.
- Equivalent series inductance (ESL) and ESR must be minimized to maximize performance and ensure stability. Every capacitor must be placed as close to the device as possible and on the same side of the PCB as the regulator.

### 7.4.2 Layout Example





## 8 Device and Documentation Support

### 8.1 Receiving Notification of Documentation Updates

To receive notification of documentation updates, navigate to the device product folder on [ti.com](http://ti.com). Click on *Notifications* to register and receive a weekly digest of any product information that has changed. For change details, review the revision history included in any revised document.

### 8.2 Support Resources

[TI E2E™ support forums](#) are an engineer's go-to source for fast, verified answers and design help — straight from the experts. Search existing answers or ask your own question to get the quick design help you need.

Linked content is provided "AS IS" by the respective contributors. They do not constitute TI specifications and do not necessarily reflect TI's views; see TI's [Terms of Use](#).

### 8.3 Trademarks

PowerPAD™ and TI E2E™ are trademarks of Texas Instruments.  
All trademarks are the property of their respective owners.

### 8.4 Electrostatic Discharge Caution



This integrated circuit can be damaged by ESD. Texas Instruments recommends that all integrated circuits be handled with appropriate precautions. Failure to observe proper handling and installation procedures can cause damage.

ESD damage can range from subtle performance degradation to complete device failure. Precision integrated circuits may be more susceptible to damage because very small parametric changes could cause the device not to meet its published specifications.

### 8.5 Glossary

[TI Glossary](#) This glossary lists and explains terms, acronyms, and definitions.

## 9 Revision History

NOTE: Page numbers for previous revisions may differ from page numbers in the current version.

<b>Changes from Revision E (September 2015) to Revision F (April 2024)</b>	<b>Page</b>
• Changed device name from <i>TPS798xx-Q1</i> to <i>TPS798-Q1</i> throughout document.....	1
• Changed <i>MSOP</i> to <i>HVSSOP</i> throughout document.....	1
• Added automotive-specific bullets to <i>Features</i> section.....	1

<b>Changes from Revision D (August 2011) to Revision E (September 2015)</b>	<b>Page</b>
• Added <i>Pin Configuration and Functions</i> section, <i>ESD Ratings</i> table, <i>Feature Description</i> section, <i>Device Functional Modes</i> , <i>Application and Implementation</i> section, <i>Power Supply Recommendations</i> section, <i>Layout</i> section, <i>Device and Documentation Support</i> section, and <i>Mechanical, Packaging, and Orderable Information</i> section .....	1

## 10 Mechanical, Packaging, and Orderable Information

The following pages include mechanical, packaging, and orderable information. This information is the most current data available for the designated devices. This data is subject to change without notice and revision of this document. For browser-based versions of this data sheet, refer to the left-hand navigation.

**PACKAGING INFORMATION**

Orderable Device	Status (1)	Package Type	Package Drawing	Pins	Package Qty	Eco Plan (2)	Lead finish/ Ball material (6)	MSL Peak Temp (3)	Op Temp (°C)	Device Marking (4/5)	Samples
TPS79801QDGNRQ1	ACTIVE	HVSSOP	DGN	8	2500	RoHS & Green	NIPDAUAG	Level-2-260C-1 YEAR	-40 to 125	PMRQ	<a href="#">Samples</a>
TPS79850QDGNRQ1	ACTIVE	HVSSOP	DGN	8	2500	RoHS & Green	NIPDAUAG	Level-2-260C-1 YEAR	-40 to 125	OOLQ	<a href="#">Samples</a>

(1) The marketing status values are defined as follows:

**ACTIVE:** Product device recommended for new designs.

**LIFEBUY:** TI has announced that the device will be discontinued, and a lifetime-buy period is in effect.

**NRND:** Not recommended for new designs. Device is in production to support existing customers, but TI does not recommend using this part in a new design.

**PREVIEW:** Device has been announced but is not in production. Samples may or may not be available.

**OBSOLETE:** TI has discontinued the production of the device.

(2) **RoHS:** TI defines "RoHS" to mean semiconductor products that are compliant with the current EU RoHS requirements for all 10 RoHS substances, including the requirement that RoHS substance do not exceed 0.1% by weight in homogeneous materials. Where designed to be soldered at high temperatures, "RoHS" products are suitable for use in specified lead-free processes. TI may reference these types of products as "Pb-Free".

**RoHS Exempt:** TI defines "RoHS Exempt" to mean products that contain lead but are compliant with EU RoHS pursuant to a specific EU RoHS exemption.

**Green:** TI defines "Green" to mean the content of Chlorine (Cl) and Bromine (Br) based flame retardants meet JS709B low halogen requirements of <=1000ppm threshold. Antimony trioxide based flame retardants must also meet the <=1000ppm threshold requirement.

(3) MSL, Peak Temp. - The Moisture Sensitivity Level rating according to the JEDEC industry standard classifications, and peak solder temperature.

(4) There may be additional marking, which relates to the logo, the lot trace code information, or the environmental category on the device.

(5) Multiple Device Markings will be inside parentheses. Only one Device Marking contained in parentheses and separated by a "~" will appear on a device. If a line is indented then it is a continuation of the previous line and the two combined represent the entire Device Marking for that device.

(6) Lead finish/Ball material - Orderable Devices may have multiple material finish options. Finish options are separated by a vertical ruled line. Lead finish/Ball material values may wrap to two lines if the finish value exceeds the maximum column width.

**Important Information and Disclaimer:**The information provided on this page represents TI's knowledge and belief as of the date that it is provided. TI bases its knowledge and belief on information provided by third parties, and makes no representation or warranty as to the accuracy of such information. Efforts are underway to better integrate information from third parties. TI has taken and continues to take reasonable steps to provide representative and accurate information but may not have conducted destructive testing or chemical analysis on incoming materials and chemicals. TI and TI suppliers consider certain information to be proprietary, and thus CAS numbers and other limited information may not be available for release.

In no event shall TI's liability arising out of such information exceed the total purchase price of the TI part(s) at issue in this document sold by TI to Customer on an annual basis.



**TAPE AND REEL INFORMATION**

**QUADRANT ASSIGNMENTS FOR PIN 1 ORIENTATION IN TAPE**


\*All dimensions are nominal

Device	Package Type	Package Drawing	Pins	SPQ	Reel Diameter (mm)	Reel Width W1 (mm)	A0 (mm)	B0 (mm)	K0 (mm)	P1 (mm)	W (mm)	Pin1 Quadrant
TPS79801QDGNRQ1	HVSSOP	DGN	8	2500	330.0	12.4	5.3	3.3	1.3	8.0	12.0	Q1
TPS79850QDGNRQ1	HVSSOP	DGN	8	2500	330.0	12.4	5.3	3.3	1.3	8.0	12.0	Q1

**TAPE AND REEL BOX DIMENSIONS**


\*All dimensions are nominal

Device	Package Type	Package Drawing	Pins	SPQ	Length (mm)	Width (mm)	Height (mm)
TPS79801QDGNRQ1	HVSSOP	DGN	8	2500	367.0	367.0	38.0
TPS79850QDGNRQ1	HVSSOP	DGN	8	2500	367.0	367.0	38.0

## GENERIC PACKAGE VIEW

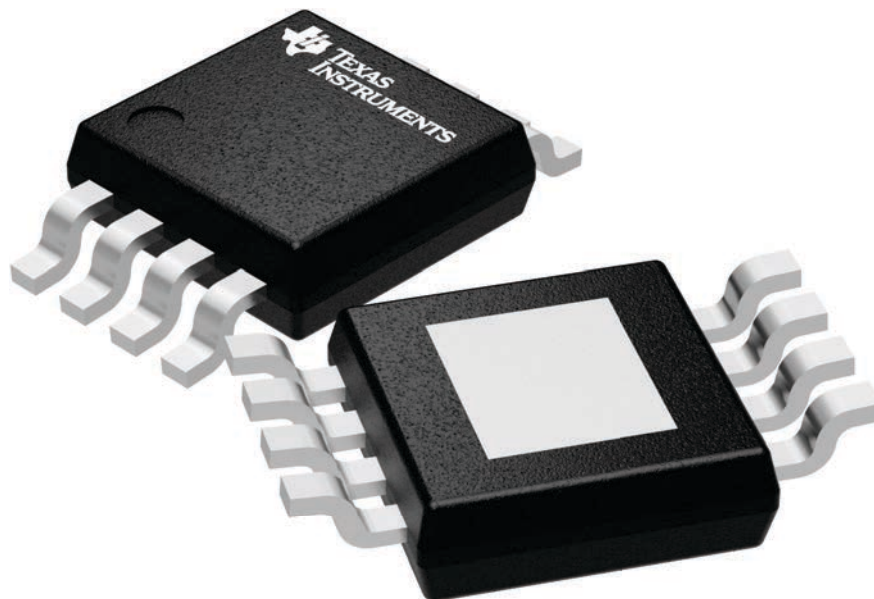
**DGN 8**

**PowerPAD VSSOP - 1.1 mm max height**

3 x 3, 0.65 mm pitch

SMALL OUTLINE PACKAGE

This image is a representation of the package family, actual package may vary.  
Refer to the product data sheet for package details.



4225482/A

## IMPORTANT NOTICE AND DISCLAIMER

TI PROVIDES TECHNICAL AND RELIABILITY DATA (INCLUDING DATA SHEETS), DESIGN RESOURCES (INCLUDING REFERENCE DESIGNS), APPLICATION OR OTHER DESIGN ADVICE, WEB TOOLS, SAFETY INFORMATION, AND OTHER RESOURCES "AS IS" AND WITH ALL FAULTS, AND DISCLAIMS ALL WARRANTIES, EXPRESS AND IMPLIED, INCLUDING WITHOUT LIMITATION ANY IMPLIED WARRANTIES OF MERCHANTABILITY, FITNESS FOR A PARTICULAR PURPOSE OR NON-INFRINGEMENT OF THIRD PARTY INTELLECTUAL PROPERTY RIGHTS.

These resources are intended for skilled developers designing with TI products. You are solely responsible for (1) selecting the appropriate TI products for your application, (2) designing, validating and testing your application, and (3) ensuring your application meets applicable standards, and any other safety, security, regulatory or other requirements.

These resources are subject to change without notice. TI grants you permission to use these resources only for development of an application that uses the TI products described in the resource. Other reproduction and display of these resources is prohibited. No license is granted to any other TI intellectual property right or to any third party intellectual property right. TI disclaims responsibility for, and you will fully indemnify TI and its representatives against, any claims, damages, costs, losses, and liabilities arising out of your use of these resources.

TI's products are provided subject to [TI's Terms of Sale](#) or other applicable terms available either on [ti.com](https://www.ti.com) or provided in conjunction with such TI products. TI's provision of these resources does not expand or otherwise alter TI's applicable warranties or warranty disclaimers for TI products.

TI objects to and rejects any additional or different terms you may have proposed.

Mailing Address: Texas Instruments, Post Office Box 655303, Dallas, Texas 75265  
Copyright © 2024, Texas Instruments Incorporated