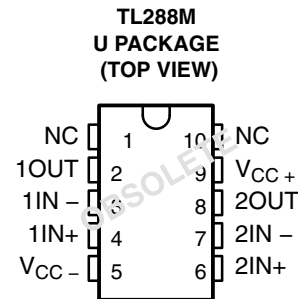
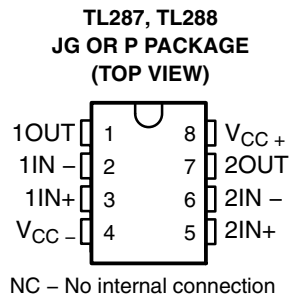
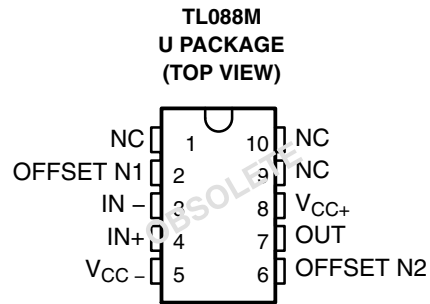
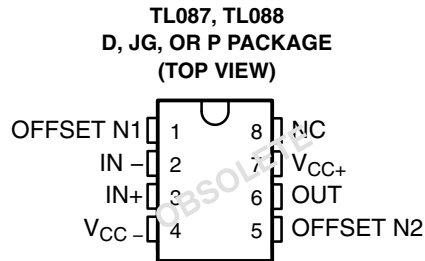


# TL087, TL088, TL287, TL288 JFET-INPUT OPERATIONAL AMPLIFIERS

The TL087, TL088, and TL287 are obsolete and are no longer supplied.

SLOS082B – MARCH 1979 REVISED – JULY 2004

- Low Input Offset Voltage . . . 0.5 mV Max
- Low Power Consumption
- Wide Common-Mode and Differential Voltage Ranges
- Low Input Bias and Offset Currents
- High Input Impedance . . . JFET-Input Stage
- Internal Frequency Compensation
- Latch-Up-Free Operation
- High Slew Rate . . . 18 V/ $\mu$ s Typ
- Low Total Harmonic Distortion 0.003% Typ



## description/ordering information

These JFET-input operational amplifiers incorporate well-matched high-voltage JFET and bipolar transistors in a monolithic integrated circuit. They feature low input offset voltage, high slew rate, low input bias and offset currents, and low temperature coefficient of input offset voltage. Offset-voltage adjustment is provided for the TL087 and TL088.

The C-suffix devices are characterized for operation from 0°C to 70°C, and the I-suffix devices are characterized for operation from -40°C to 85°C. The M-suffix devices are characterized for operation over the full military temperature range of -55°C to 125°C.

## ORDERING INFORMATION

T <sub>A</sub>	TYPE	V <sub>IO</sub> MAX AT 25°C	PACKAGE†		ORDERABLE PART NUMBER	TOP-SIDE MARKING
0°C to 70°C	Dual	1 mV	PDIP (P)	Tube of 50	TL288CP	TL288CP

† Package drawings, standard packing quantities, thermal data, symbolization, and PCB design guidelines are available at [www.ti.com/sc/package](http://www.ti.com/sc/package).



Please be aware that an important notice concerning availability, standard warranty, and use in critical applications of Texas Instruments semiconductor products and disclaimers thereto appears at the end of this data sheet.

PRODUCTION DATA information is current as of publication date. Products conform to specifications per the terms of Texas Instruments standard warranty. Production processing does not necessarily include testing of all parameters.

**TEXAS  
INSTRUMENTS**

POST OFFICE BOX 655303 • DALLAS, TEXAS 75265

Copyright © 2004, Texas Instruments Incorporated

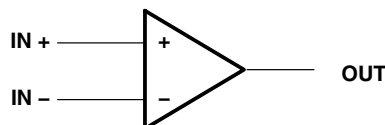
# TL087, TL088, TL287, TL288

## JFET-INPUT OPERATIONAL AMPLIFIERS

The TL087, TL088, and TL287 are obsolete and are no longer supplied.

SLOS082B – MARCH 1979 REVISED – JULY 2004

### symbol (each amplifier)



### absolute maximum ratings over operating free-air temperature range (unless otherwise noted)

	TL088M TL288M	TL087I TL088I TL287I TL288I	TL087C TL088C TL287C TL288C	UNIT
Supply voltage, $V_{CC+}$ (see Note 1)	18	18	18	V
Supply voltage, $V_{CC-}$ (see Note 1)	-18	-18	-18	V
Differential input voltage (see Note 2)	$\pm 30$	$\pm 30$	$\pm 30$	V
Input voltage (see Notes 1 and 3)	$\pm 15$	$\pm 15$	$\pm 15$	V
Input current, $I_I$ (each input)	$\pm 1$	$\pm 1$	$\pm 1$	mA
Output current, $I_O$ (each output)	$\pm 80$	$\pm 80$	$\pm 80$	mA
Total $V_{CC+}$ terminal current	160	160	160	mA
Total $V_{CC-}$ terminal current	-160	-160	-160	mA
Duration of output short circuit (see Note 4)	Unlimited	Unlimited	Unlimited	
Continuous total dissipation	See Dissipation Rating Table			
Maximum junction temperature, $T_J$		150	150	$^{\circ}\text{C}$
Package thermal impedance, $\theta_{JA}$ (see Notes 5 and 6)	P package	85	85	$^{\circ}\text{C/W}$
Lead temperature 1,6 mm (1/16 inch) from case for 60 seconds	JG or U package	300	300	$^{\circ}\text{C}$
Storage temperature range, $T_{stg}$	-65 to 150	-65 to 150	-65 to 150	$^{\circ}\text{C}$

- NOTES: 1. All voltage values, except differential voltages, are with respect to the midpoint between  $V_{CC+}$  and  $V_{CC-}$ .
2. Differential voltages are at the noninverting input terminal with respect to the inverting input terminal.
3. The magnitude of the input voltage must never exceed the magnitude of the supply voltage or 15 V, whichever is less.
4. The output may be shorted to ground or to either supply. Temperature and/or supply voltages must be limited to ensure that the dissipation rating is not exceeded.
5. Maximum power dissipation is a function of  $T_J(\text{max})$ ,  $\theta_{JA}$ , and  $T_A$ . The maximum allowable power dissipation at any allowable ambient temperature is  $PD = (T_J(\text{max}) - T_A)/\theta_{JA}$ . Operating at the absolute maximum  $T_J$  of  $150^{\circ}\text{C}$  can affect reliability.
6. The package thermal impedance is calculated in accordance with JESD 51-7.
7. The output may be shorted to ground or to either supply. Temperature and/or supply voltages must be limited to ensure that the dissipation rating is not exceeded.
8. Maximum power dissipation is a function of  $T_J(\text{max})$ ,  $\theta_{JA}$ , and  $T_A$ . The maximum allowable power dissipation at any allowable ambient temperature is  $PD = (T_J(\text{max}) - T_A)/\theta_{JA}$ . Operating at the absolute maximum  $T_J$  of  $150^{\circ}\text{C}$  can affect reliability.
9. The package thermal impedance is calculated in accordance with JESD 51-7.

DISSIPATION RATING TABLE

PACKAGE	$T_A \leq 25^{\circ}\text{C}$ POWER RATING	DERATING FACTOR ABOVE $T_A = 25^{\circ}\text{C}$	$T_A = 70^{\circ}\text{C}$ POWER RATING	$T_A = 85^{\circ}\text{C}$ POWER RATING	$T_A = 125^{\circ}\text{C}$ POWER RATING
JG	1050 mW	8.4 mW/ $^{\circ}\text{C}$	672 mW	546 mW	210 mW
U	675 mW	5.4 mW/ $^{\circ}\text{C}$	432 mW	351 mW	135 mW

# TL087, TL088, TL287, TL288 JFET-INPUT OPERATIONAL AMPLIFIERS

The TL087, TL088, and TL287 are  
obsolete and are no longer supplied.

SLOS082B – MARCH 1979 REVISED – JULY 2004

## recommended operating conditions

		C-SUFFIX		I-SUFFIX		M-SUFFIX		UNIT
		MIN	MAX	MIN	MAX	MIN	MAX	
$V_{CC}$	Supply voltage	$\pm 5$	$\pm 5$	$\pm 5$	$\pm 5$	$\pm 5$	$\pm 15$	V
$V_{IC}$	Common-mode input voltage	$V_{CC\pm} = \pm 5$ V		-1	4	-1	4	V
		$V_{CC\pm} = \pm 15$ V		-11	11	-11	11	
$V_I$	Input voltage	$V_{CC\pm} = \pm 5$ V		-1	4	-1	4	V
		$V_{CC\pm} = \pm 15$ V		-11	11	-11	11	
$T_A$	Operating free-air temperature	0	70	-40	85	-55	125	°C

## operating characteristics $V_{CC} = \pm 15$ V, $T_A = 25^\circ\text{C}$

PARAMETER		TEST CONDITIONS		TL088M, TL288M			TL087I, TL087C TL088I, TL088C			UNIT
				MIN	TYP	MAX	MIN	TYP	MAX	
SR	Slew rate at unity gain	$V_I = 10$ V, $C_L = 100$ pF,	$R_L = 2$ k $\Omega$ , $A_{VD} = 1$		18		8	18		V/ $\mu$ s
$t_r$	Rise time	$V_I = 20$ mV,	$R_L = 2$ k $\Omega$ ,		55			55		ns
	Overshoot factor	$C_L = 100$ pF,	$A_{VD} = 1$		25			25		%
$V_n$	Equivalent input noise voltage	$R_S = 100$ $\Omega$ ,	$f = 1$ kHz		19			19		nV/ $\sqrt{\text{Hz}}$



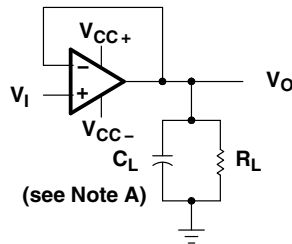
**electrical characteristics,  $V_{CC\pm} = \pm 15\text{ V}$**

PARAMETER	TEST CONDITIONS†		TL088M TL288M			TL087I TL088I TL287I TL288I			TL087C TL088C TL287C TL288C			UNIT
			MIN	TYP	MAX	MIN	TYP	MAX	MIN	TYP	MAX	
$V_{IO}$ Input offset voltage	$R_S = 50\ \Omega$ , $V_O = 0$ $T_A = 25^\circ\text{C}$	TL087, TL287				0.1	0.5		0.1	0.5		mV
		TL088, TL288		0.1	3	0.1	1		0.1	1		
	$R_S = 50\ \Omega$ , $V_O = 0$ , $T_A = \text{full range}$	TL087, TL287					2			1.5		
		TL088, TL288			6		3			2.5		
$\alpha_{VIO}$ Temperature coefficient of input offset voltage	$R_S = 50\ \Omega$ , $T_A = 25^\circ\text{C}$ to MAX			10			8			8		$\mu\text{V}/^\circ\text{C}$
$I_{IO}$ Input offset current	$T_A = 25^\circ\text{C}$			5			5	100		5	100	pA
	$T_A = \text{full range}$				25			3			2	nA
$I_{IB}$ Input bias current‡	$T_A = 25^\circ\text{C}$			30			30	200		30	200	pA
	$T_A = \text{full range}$				100			20			7	nA
$V_{ICR}$ Common-mode input voltage range	$T_A = 25^\circ\text{C}$		$(V_{CC-}) + 4$ to $(V_{CC+}) - 4$			$(V_{CC-}) + 4$ to $(V_{CC+}) - 4$			$(V_{CC-}) + 4$ to $(V_{CC+}) - 4$			V
$V_{O(PP)}$ Maximum-peak-to-peak output voltage swing	$T_A = 25^\circ\text{C}$ , $R_L = 10\ \text{k}\Omega$		24	27		24	27		24	27		V
	$T_A = \text{full range}$ , $R_L \geq 10\ \text{k}\Omega$		24			24			24			
	$T_A = \text{full range}$ , $R_L \geq 2\ \text{k}\Omega$		20			20			20			
$A_{VD}$ Large-signal differential voltage amplification	$R_L \geq 2\ \text{k}\Omega$ , $V_O = \pm 10\text{ V}$ , $T_A = 25^\circ\text{C}$		50	105		50	105		50	105		V/mV
	$R_L \geq 2\ \text{k}\Omega$ , $V_O = \pm 10\text{ V}$ , $T_A = \text{full range}$		25			25			25			
$B_1$ Unity-gain bandwidth	$T_A = 25^\circ\text{C}$			3			3			3		MHz
$r_i$ Input resistance	$T_A = 25^\circ\text{C}$			$10^{12}$			$10^{12}$			$10^{12}$		$\Omega$
CMRR Common-mode rejection ratio	$R_S = 50\ \Omega$ , $V_O = 0\text{ V}$ , $V_{IC} = V_{ICR\text{ min}}$ , $T_A = 25^\circ\text{C}$		80	93		80	93		80	93		dB
$k_{SVR}$ Supply voltage rejection ratio ( $\Delta V_{CC\pm}/\Delta V_{IO}$ )	$R_S = 50\ \Omega$ , $V_O = 0\text{ V}$ , $V_{CC\pm} = \pm 9\text{ V}$ to $\pm 15\text{ V}$ , $T_A = 25^\circ\text{C}$		80	99		80	99		80	99		dB
$I_{CC}$ Supply current (per amplifier)	No load, $V_O = 0\text{ V}$ , $T_A = 25^\circ\text{C}$		26	2.8		2.6	2.8		2.6	2.8		mA

† All characteristics are measured under open-loop conditions with zero common-mode input voltage, unless otherwise specified. Full range for  $T_A$  is  $-55^\circ\text{C}$  to  $125^\circ\text{C}$  for TL\_88M;  $-40^\circ\text{C}$  to  $85^\circ\text{C}$  for TL\_8\_I; and  $0^\circ\text{C}$  to  $70^\circ\text{C}$  for TL\_8\_C.

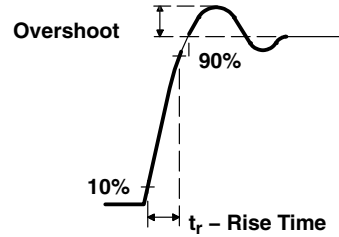
‡ Input bias currents of an FET-input operational amplifier are normal junction reverse currents, which are temperature sensitive. Pulse techniques must be used that will maintain the junction temperature as close to the ambient temperature as possible.

## PARAMETER MEASUREMENT INFORMATION

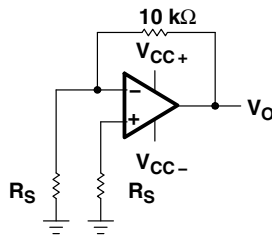


NOTE A:  $C_L$  includes fixture capacitance.

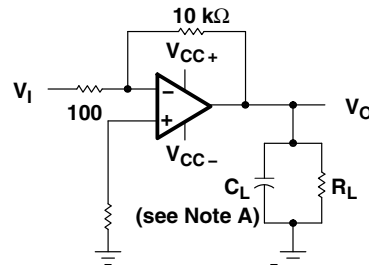
**Figure 1. Slew Rate, Rise/Fall Time, and Overshoot Test Circuit**



**Figure 2. Rise Time and Overshoot Waveform**

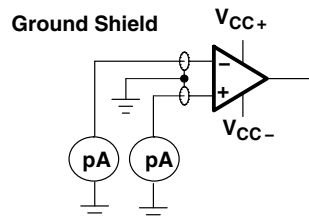


**Figure 3. Noise Voltage Test Circuit**



NOTE A:  $C_L$  includes fixture capacitance.

**Figure 4. Unity-Gain Bandwidth and Phase Margin Test Circuit**



**Figure 5. Input Bias and Offset Current Test Circuit**

# TL087, TL088, TL287, TL288

## JFET-INPUT OPERATIONAL AMPLIFIERS

SLOS082B – MARCH 1979 – REVISED – JULY 2004

---

### typical values

Typical values as presented in this data sheet represent the median (50% point) of device parametric performance.

### input bias and offset current

At the picoamp bias current level typical of these JFET operational amplifiers, accurate measurement of the bias current becomes difficult. Not only does this measurement require a picoammeter, but test socket leakages can easily exceed the actual device bias currents. To accurately measure these small currents, Texas Instruments uses a two-step process. The socket leakage is measured using picoammeters with bias voltages applied, but with no device in the socket. The device then is inserted in the socket and a second test that measures both the socket leakage and the device input bias current is performed. The two measurements then are subtracted algebraically to determine the bias current of the device.



POST OFFICE BOX 655303 • DALLAS, TEXAS 75265

**TYPICAL CHARACTERISTICS**

**table of graphs**

			<b>FIGURE</b>
$\alpha_{VIO}$	Temperature coefficient of input offset voltage	Distribution	6, 7
$I_{IO}$	Input offset current	vs Temperature	8
$I_{IB}$	Input bias current	vs $V_{IC}$	9
		vs Temperature	8
$V_I$	Common-mode input voltage range limits	vs $V_{CC}$	10
		vs Temperature	11
$V_{ID}$	Differential input voltage	vs Output voltage	12
$V_{OM}$	Maximum peak output voltage swing	vs $V_{CC}$	13
		vs Output current	17
		vs Frequency	14, 15, 16
		vs Temperature	18
$A_{VD}$	Differential voltage amplification	vs $R_L$	19
		vs Frequency	20
		vs Temperature	21
$z_o$	Output impedance	vs Frequency	24
CMRR	Common-mode rejection ratio	vs Frequency	22
		vs Temperature	23
$k_{SVR}$	Supply-voltage rejection ratio	vs Temperature	25
$I_{OS}$	Short-circuit output current	vs $V_{CC}$	26
		vs Time	27
		vs Temperature	28
$I_{CC}$	Supply current	vs $V_{CC}$	29
		vs Temperature	30
SR	Slew rate	vs $R_L$	31
		vs Temperature	32
	Overshoot factor	vs $C_L$	33
$V_n$	Equivalent input noise voltage	vs Frequency	34
THD	Total harmonic distortion	vs Frequency	35
$B_1$	Unity-gain bandwidth	vs $V_{CC}$	36
		vs Temperature	37
$\phi_m$	Phase margin	vs $V_{CC}$	38
		vs $C_L$	39
		vs Temperature	40
	Phase shift	vs Frequency	20
	Pulse response	Small-signal	41
		Large-signal	42

# TL087, TL088, TL287, TL288 JFET-INPUT OPERATIONAL AMPLIFIERS

SLOS082B – MARCH 1979 – REVISED – JULY 2004

## TYPICAL CHARACTERISTICS†

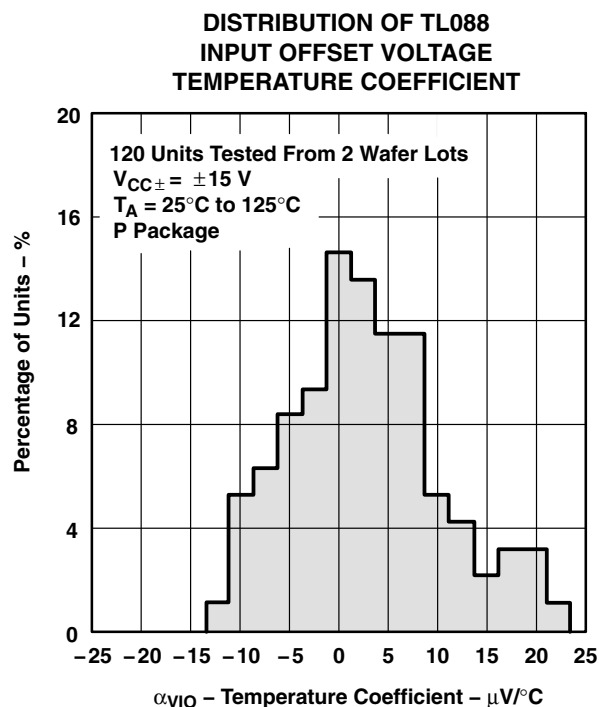


Figure 6

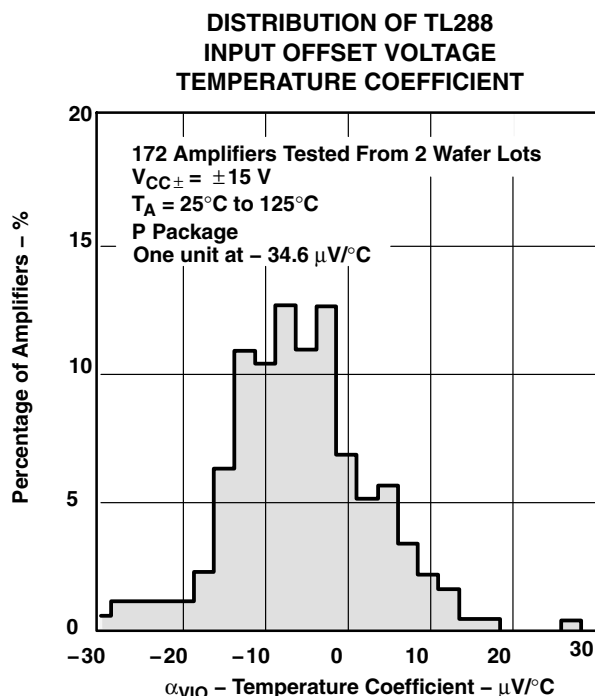


Figure 7

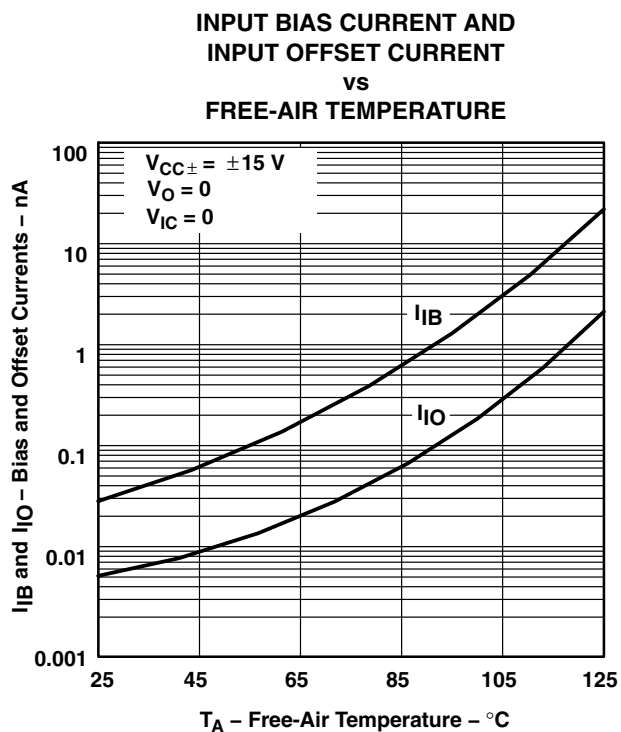


Figure 8

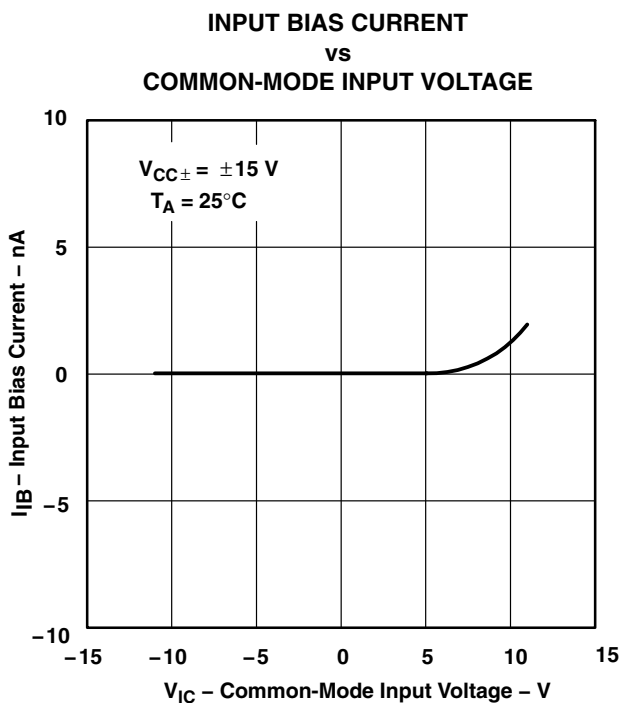
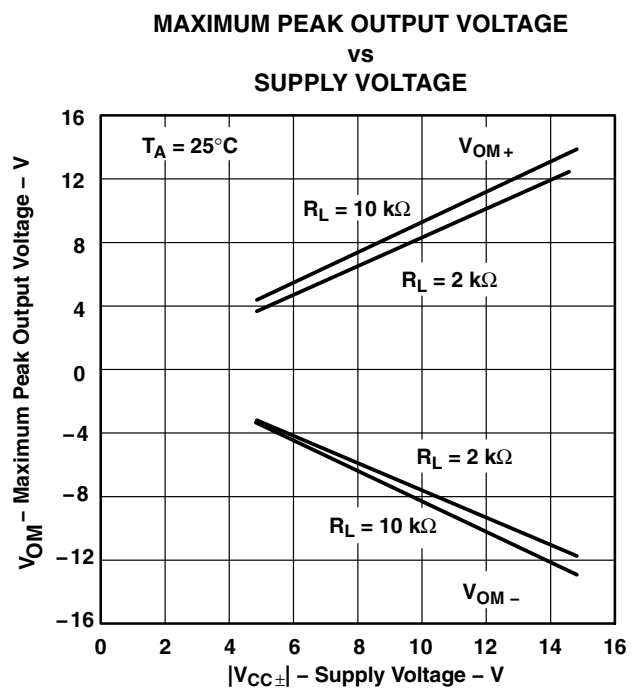
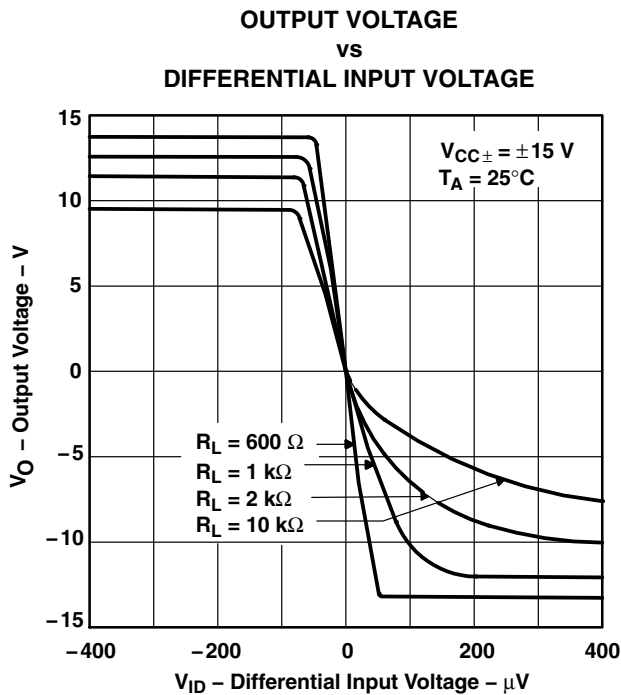
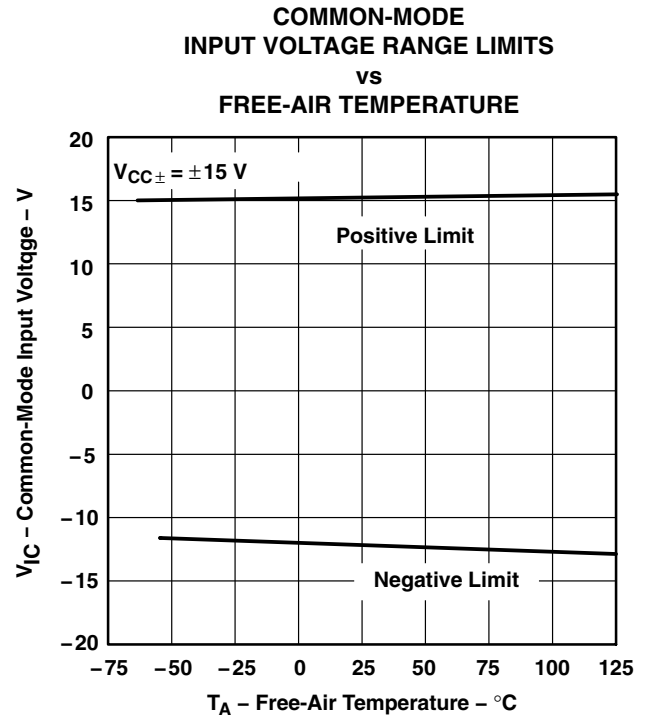
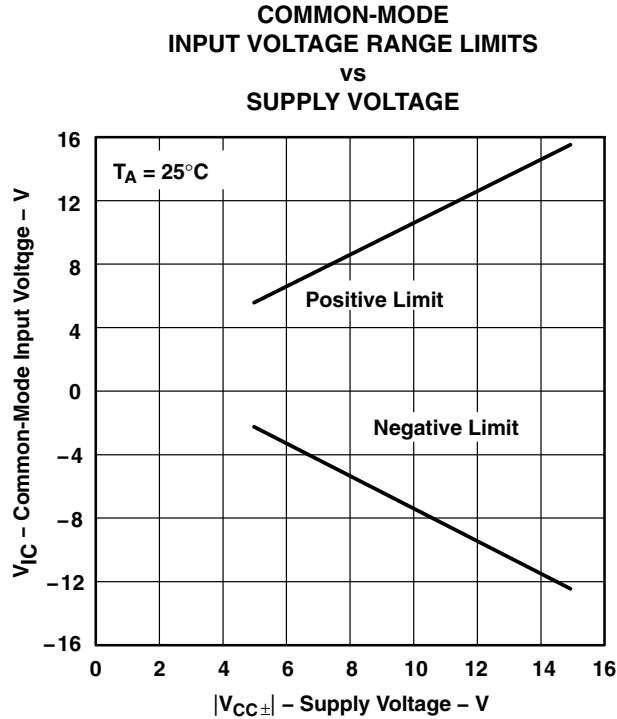


Figure 9

† Data at high and low temperatures are applicable within the rated operating free-air temperature ranges of the various devices.



TYPICAL CHARACTERISTICS†



† Data at high and low temperatures are applicable within the rated operating free-air temperature ranges of the various devices.

# TL087, TL088, TL287, TL288 JFET-INPUT OPERATIONAL AMPLIFIERS

SLOS082B – MARCH 1979 – REVISED – JULY 2004

## TYPICAL CHARACTERISTICS†

MAXIMUM PEAK-TO-PEAK OUTPUT VOLTAGE  
vs  
FREQUENCY

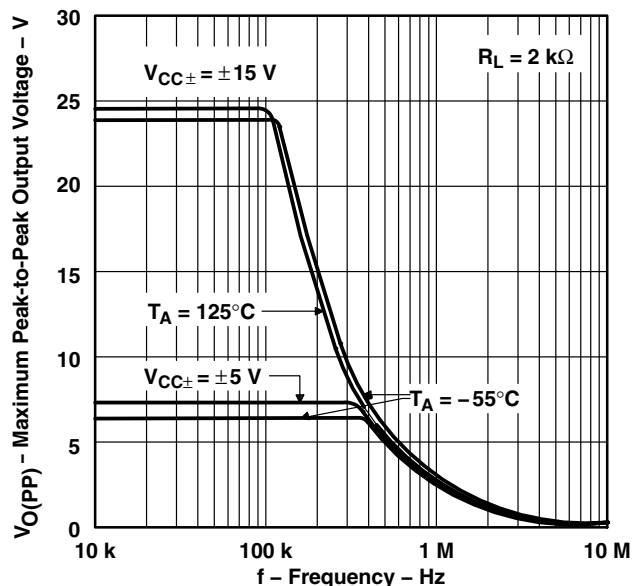


Figure 14

MAXIMUM PEAK-TO-PEAK OUTPUT VOLTAGE  
vs  
FREQUENCY

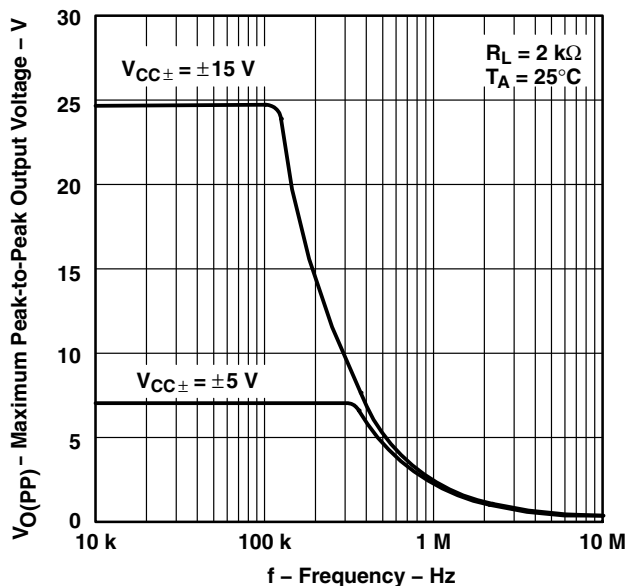


Figure 15

MAXIMUM PEAK-TO-PEAK OUTPUT VOLTAGE  
vs  
FREQUENCY

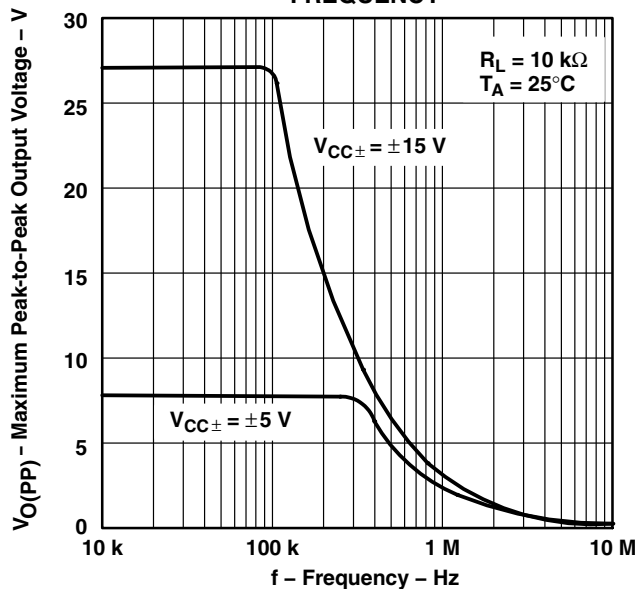


Figure 16

MAXIMUM PEAK OUTPUT VOLTAGE  
vs  
OUTPUT CURRENT

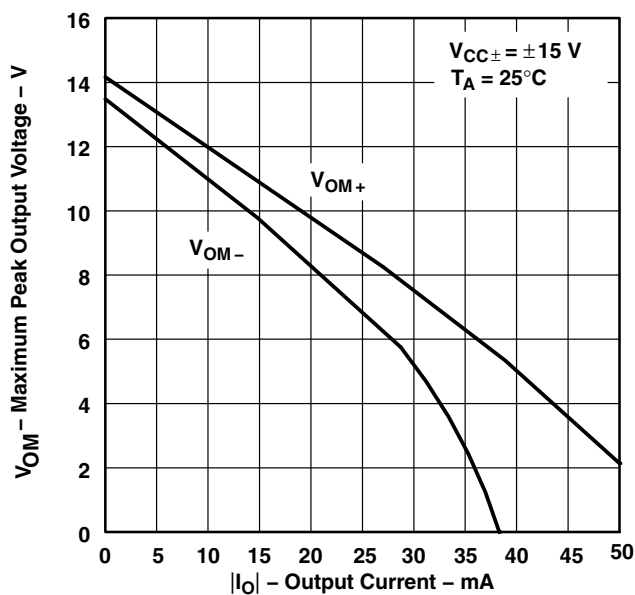


Figure 17

† Data at high and low temperatures are applicable within the rated operating free-air temperature ranges of the various devices.

TYPICAL CHARACTERISTICS†

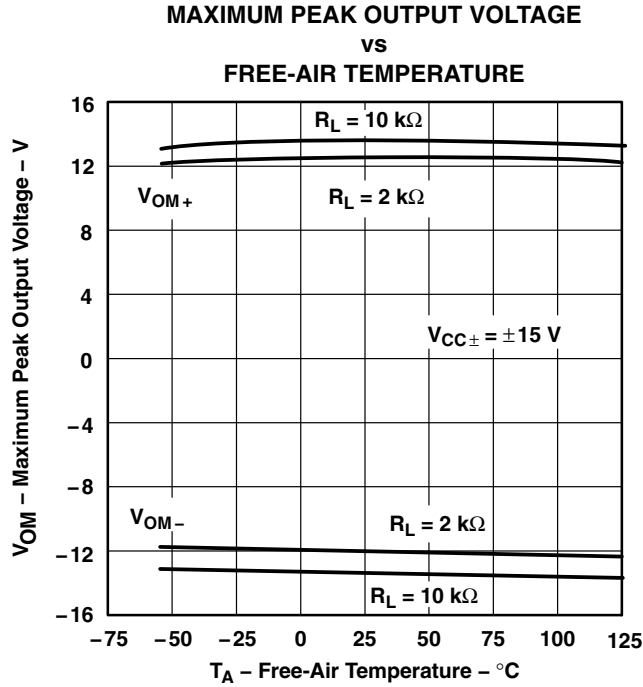


Figure 18

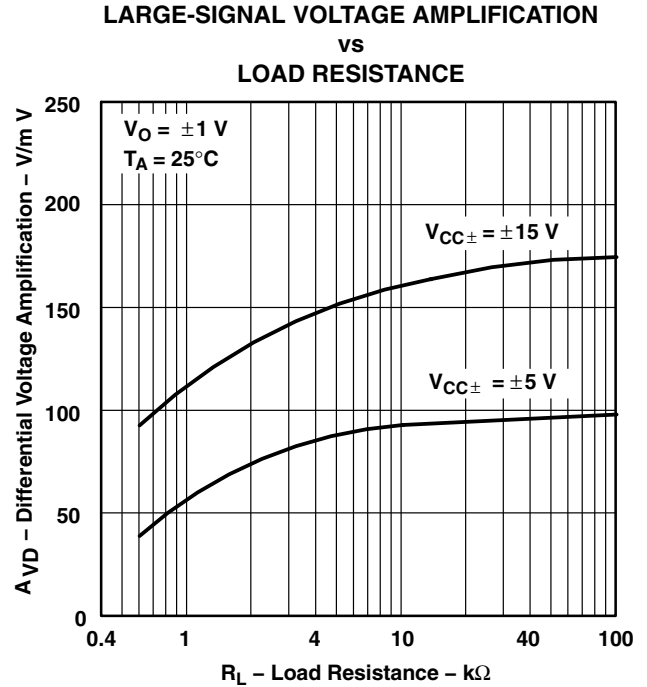


Figure 19

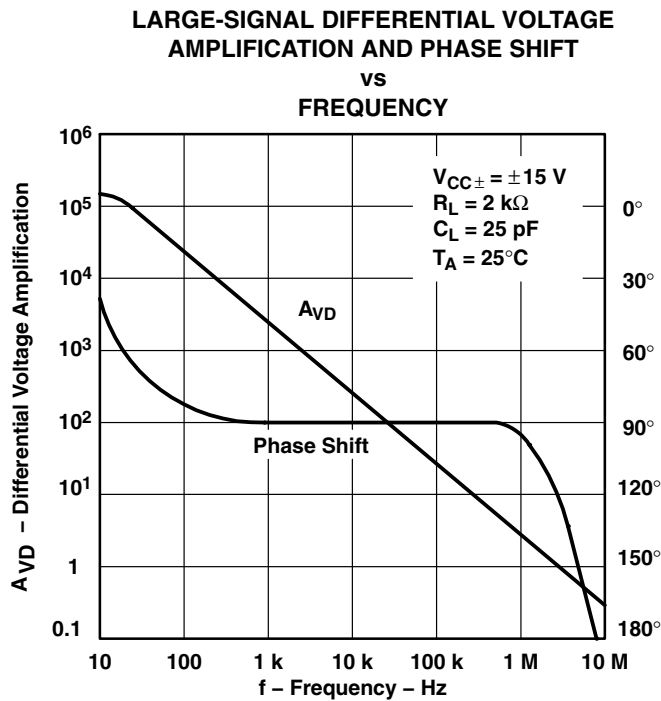


Figure 20

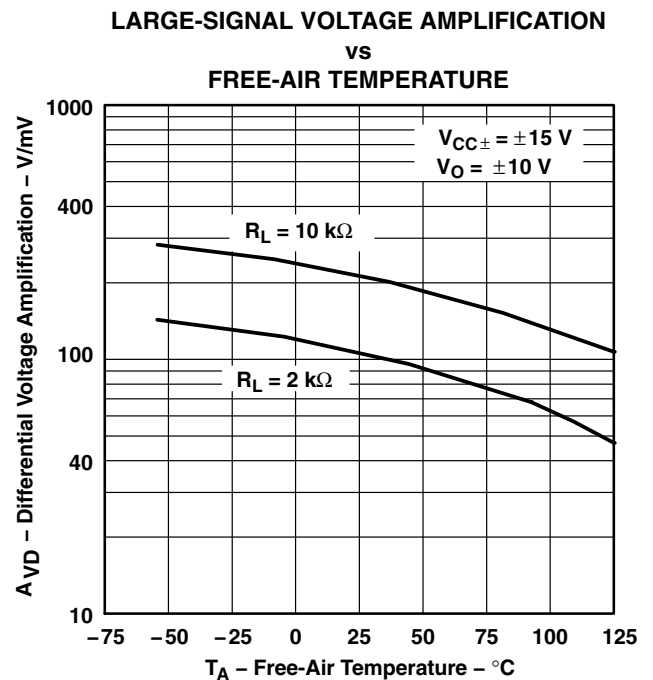


Figure 21

† Data at high and low temperatures are applicable within the rated operating free-air temperature ranges of the various devices.

# TL087, TL088, TL287, TL288 JFET-INPUT OPERATIONAL AMPLIFIERS

SLOS082B – MARCH 1979 – REVISED – JULY 2004

## TYPICAL CHARACTERISTICS†

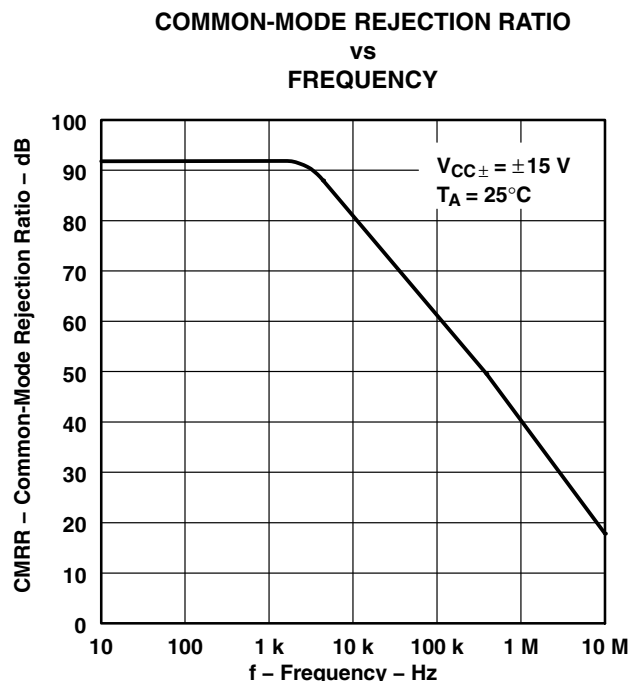


Figure 22

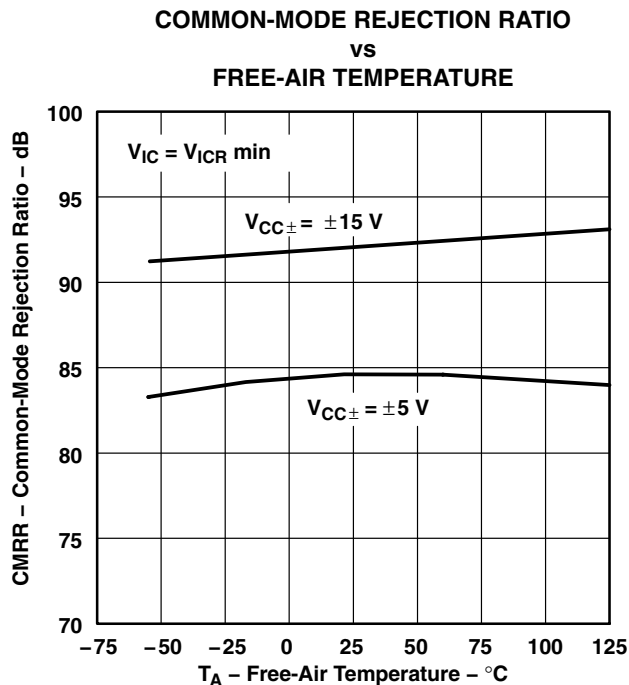


Figure 23

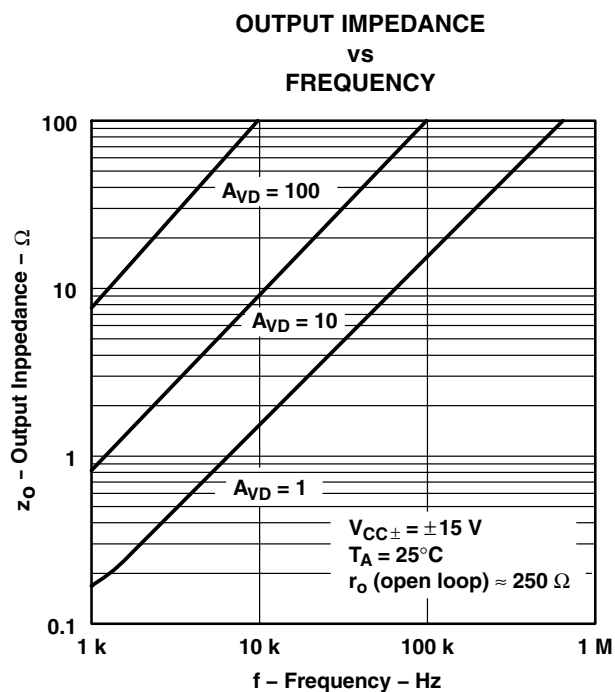


Figure 24

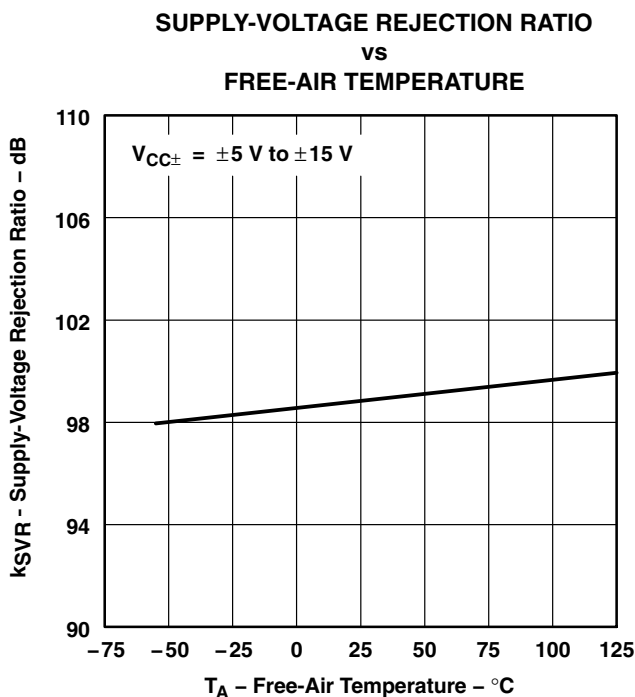


Figure 25

† Data at high and low temperatures are applicable within the rated operating free-air temperature ranges of the various devices.

TYPICAL CHARACTERISTICS†

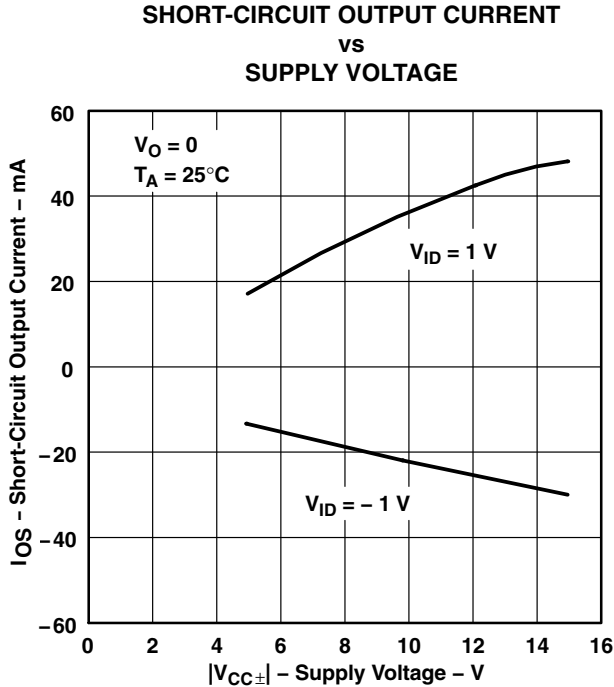


Figure 26

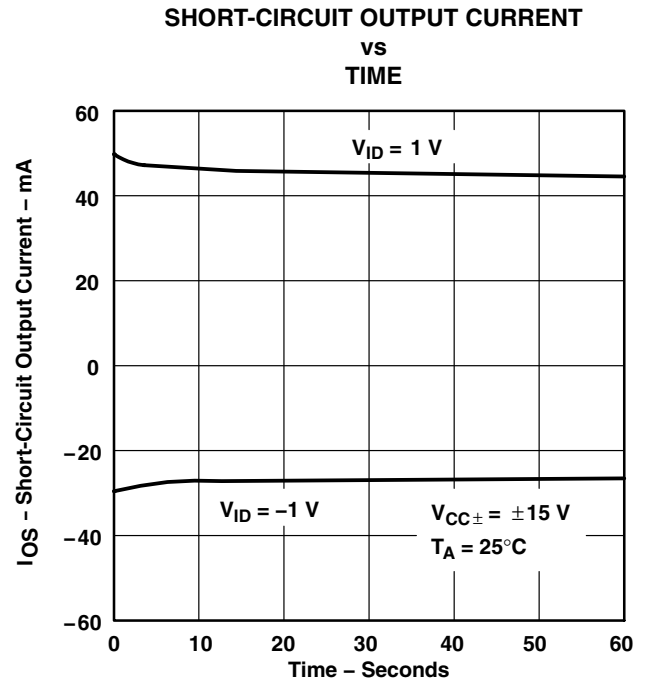


Figure 27

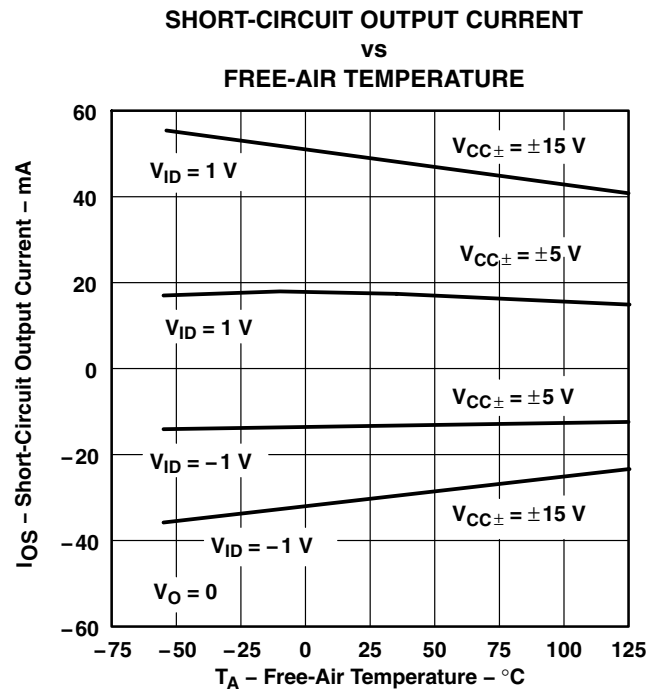


Figure 28

† Data at high and low temperatures are applicable within the rated operating free-air temperature ranges of the various devices.

# TL087, TL088, TL287, TL288 JFET-INPUT OPERATIONAL AMPLIFIERS

SLOS082B – MARCH 1979 – REVISED – JULY 2004

## TYPICAL CHARACTERISTICS†

**SUPPLY CURRENT  
vs  
SUPPLY VOLTAGE**

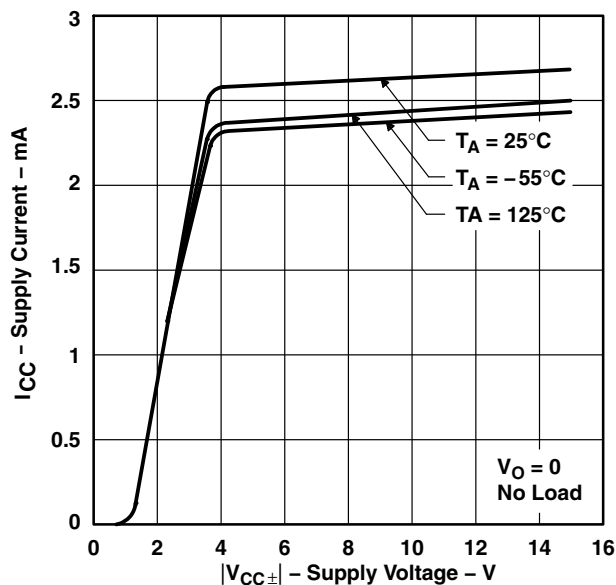


Figure 29

**SUPPLY CURRENT  
vs  
FREE-AIR TEMPERATURE**

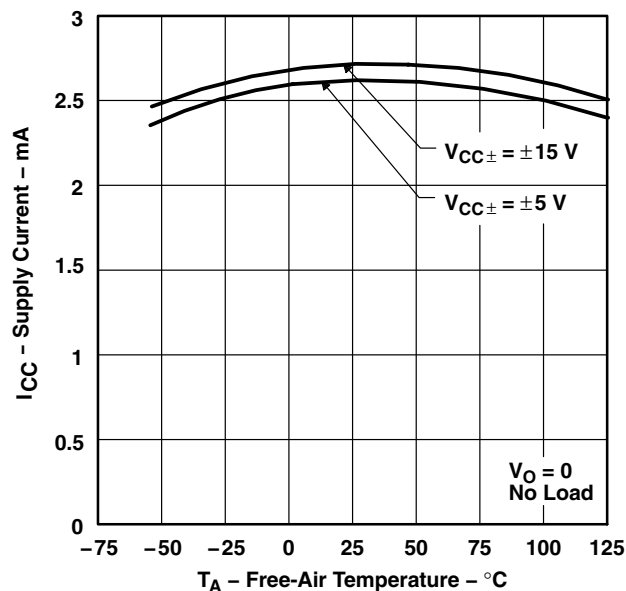


Figure 30

**SLEW RATE  
vs  
LOAD RESISTANCE**

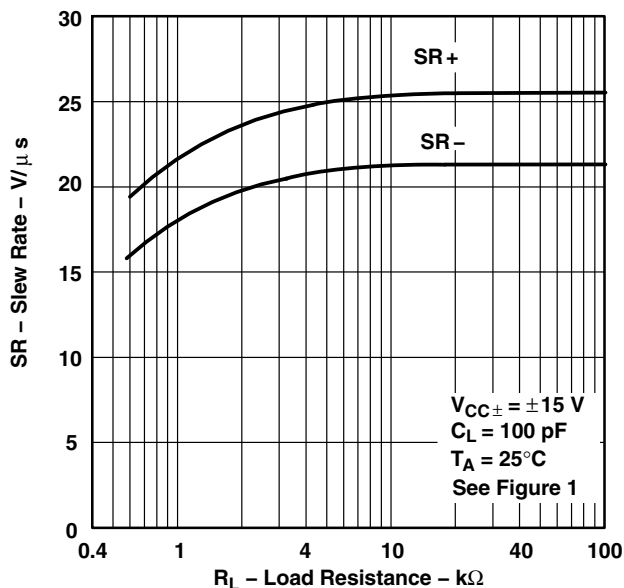


Figure 31

**SLEW RATE  
vs  
FREE-AIR TEMPERATURE**

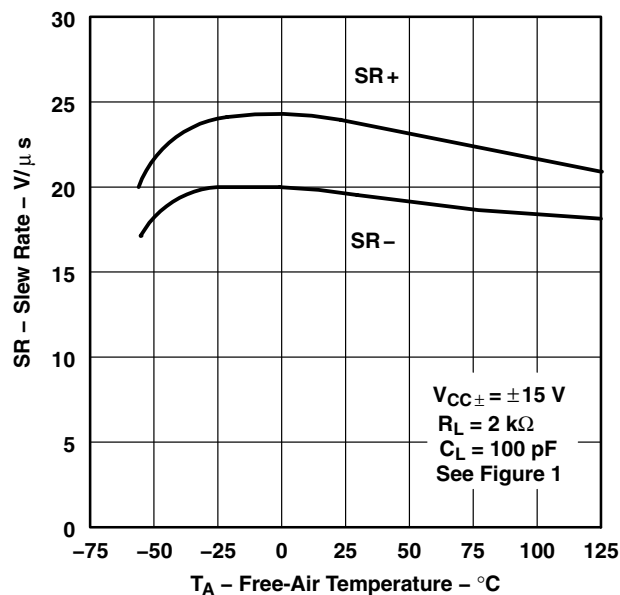


Figure 32

† Data at high and low temperatures are applicable within the rated operating free-air temperature ranges of the various devices.

TYPICAL CHARACTERISTICS†

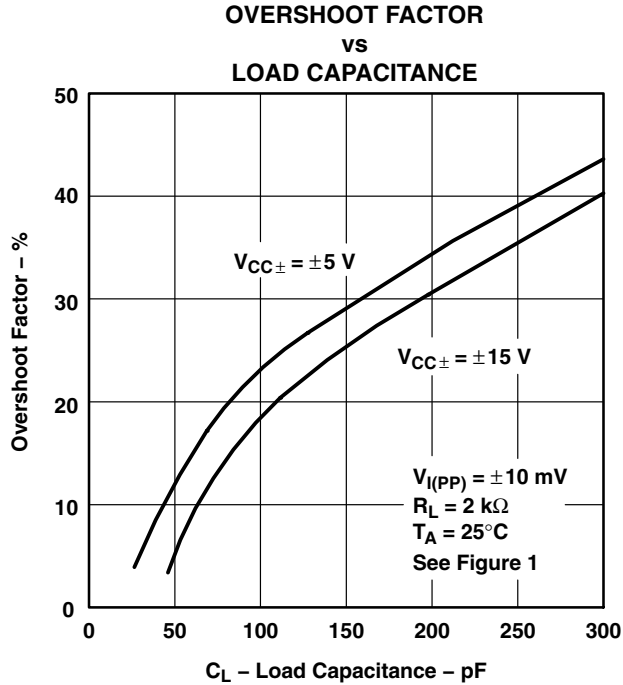


Figure 33

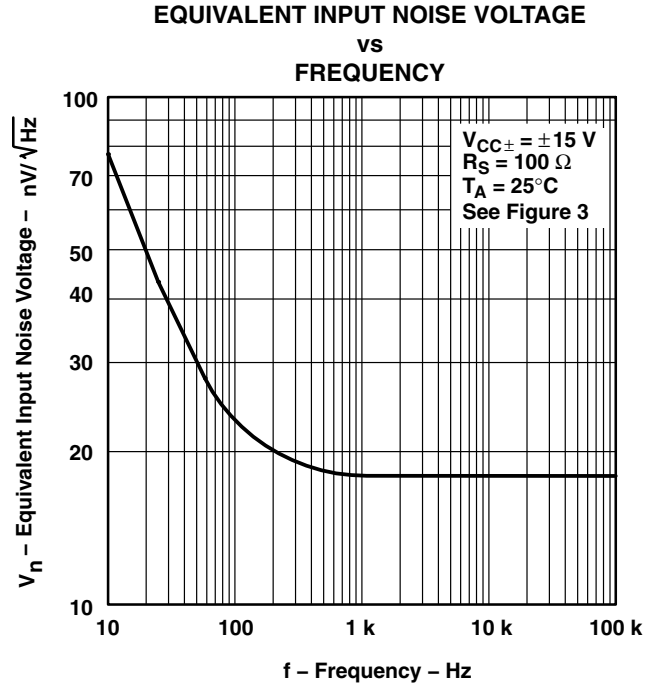


Figure 34

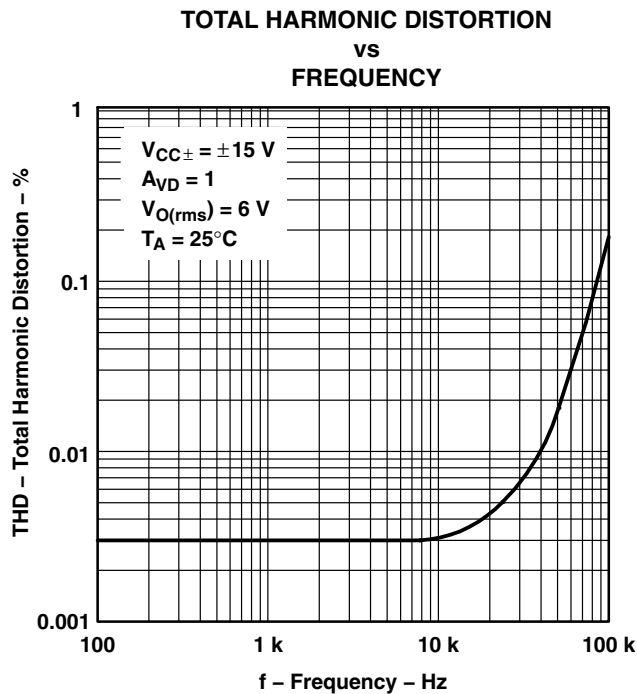


Figure 35

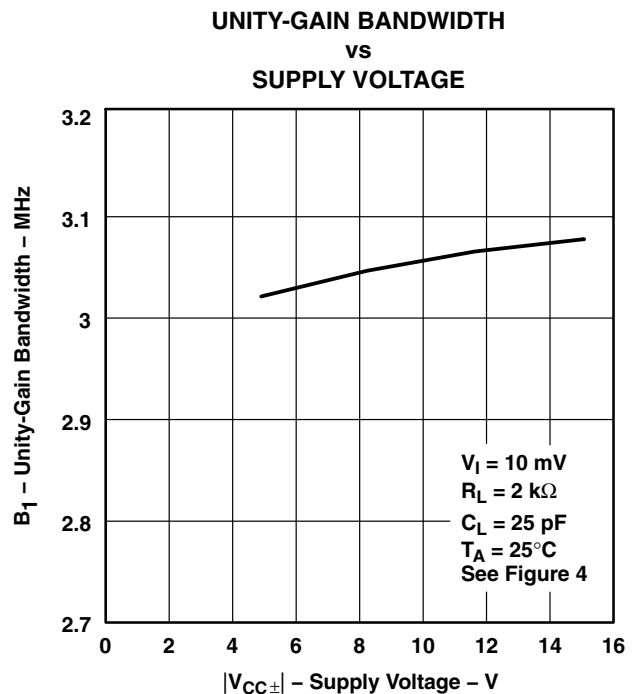


Figure 36

† Data at high and low temperatures are applicable within the rated operating free-air temperature ranges of the various devices.

# TL087, TL088, TL287, TL288 JFET-INPUT OPERATIONAL AMPLIFIERS

SLOS082B – MARCH 1979 – REVISED – JULY 2004

## TYPICAL CHARACTERISTICS†

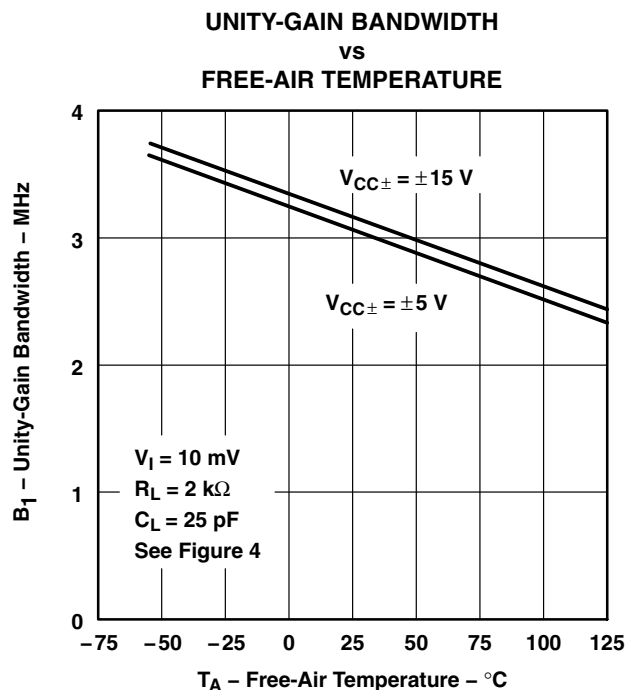


Figure 37

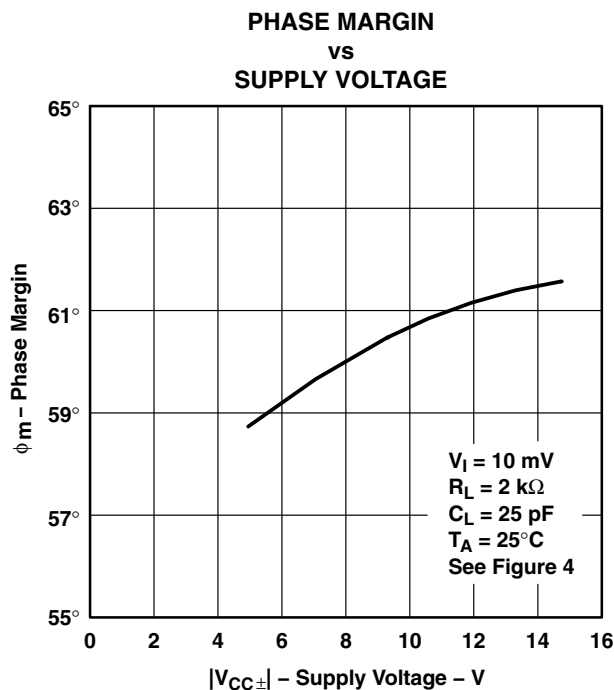


Figure 38

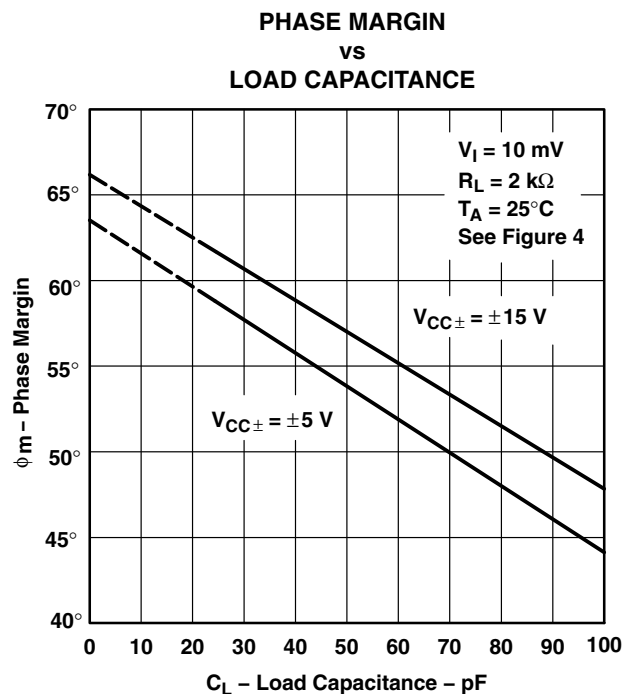


Figure 39

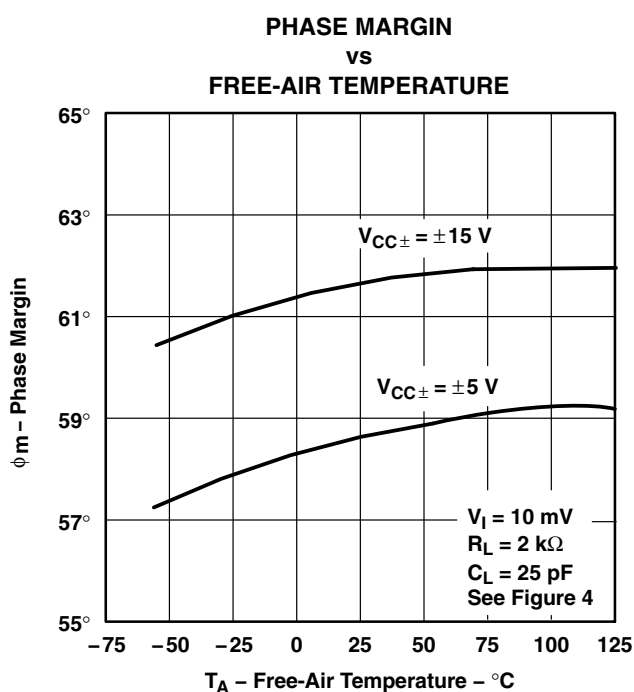


Figure 40

† Data at high and low temperatures are applicable within the rated operating free-air temperature ranges of the various devices.



TYPICAL CHARACTERISTICS

VOLTAGE-FOLLOWER  
SMALL-SIGNAL  
PULSE RESPONSE

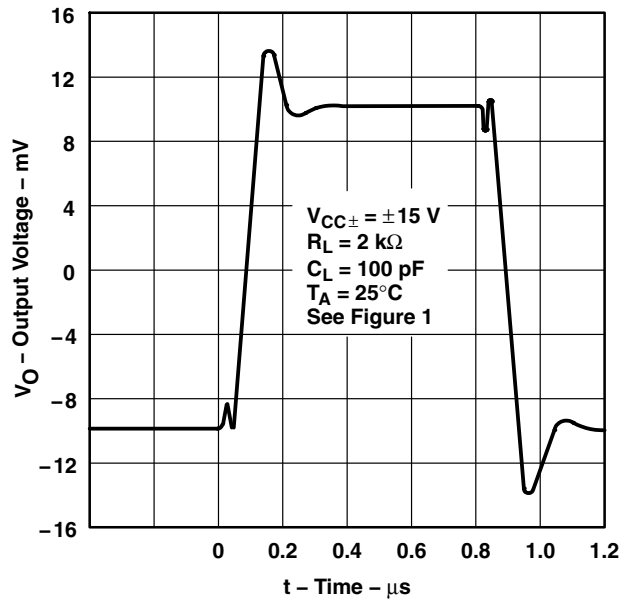


Figure 41

VOLTAGE-FOLLOWER  
LARGE-SIGNAL  
PULSE RESPONSE

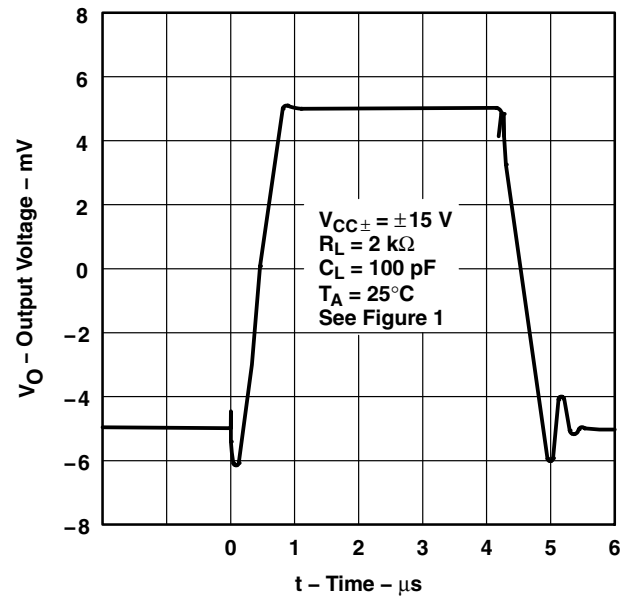


Figure 42

# TL087, TL088, TL287, TL288 JFET-INPUT OPERATIONAL AMPLIFIERS

SLOS082B – MARCH 1979 – REVISED – JULY 2004

## TYPICAL APPLICATION DATA

### output characteristics

All operating characteristics are specified with 100-pF load capacitance. These amplifiers will drive higher capacitive loads; however, as the load capacitance increases, the resulting response pole occurs at lower frequencies, causing ringing, peaking, or even oscillation. The value of the load capacitance at which oscillation occurs varies with production lots. If an application appears to be sensitive to oscillation due to load capacitance, adding a small resistance in series with the load should alleviate the problem. Capacitive loads of 1000 pF, and larger, may be driven if enough resistance is added in series with the output (see Figure 43).

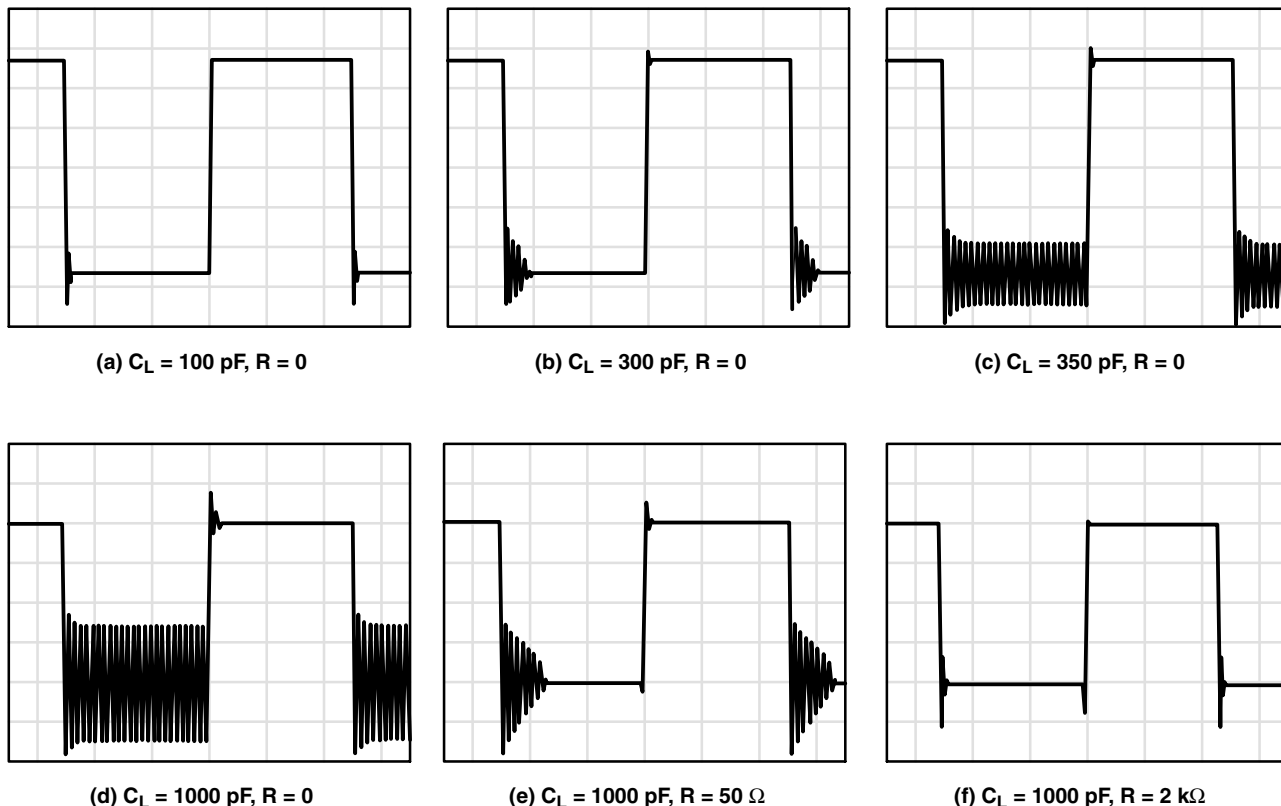


Figure 43. Effect of Capacitive Loads

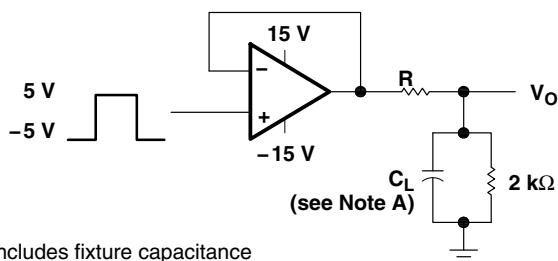


Figure 44. Test Circuit for Output Characteristics

## TYPICAL APPLICATION DATA

### input characteristics

These amplifiers are specified with a minimum and a maximum input voltage that, if exceeded at either input, could cause the device to malfunction.

Because of the extremely high input impedance and resulting low bias current requirements, these amplifiers are well suited for low-level signal processing; however, leakage currents on printed circuit boards and sockets easily can exceed bias current requirements and cause degradation in system performance. It is good practice to include guard rings around inputs (see Figure 45). These guards should be driven from a low-impedance source at the same voltage level as the common-mode input.

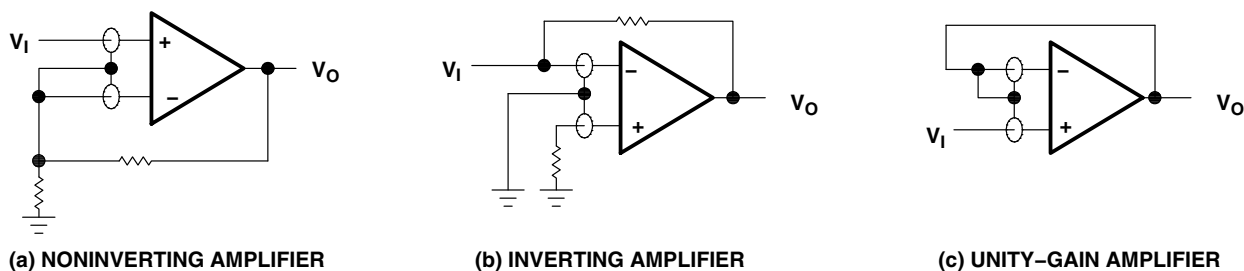


Figure 45. Use of Guard Rings

### noise performance

The noise specifications in operational amplifier circuits are greatly dependent on the current in the first-stage differential amplifier. The low input bias current requirements of these amplifiers result in a very low current noise. This feature makes the devices especially favorable over bipolar devices when using values of circuit impedance greater than 50 k $\Omega$ .

## PACKAGING INFORMATION

Orderable part number	Status (1)	Material type (2)	Package   Pins	Package qty   Carrier	RoHS (3)	Lead finish/ Ball material (4)	MSL rating/ Peak reflow (5)	Op temp (°C)	Part marking (6)
TL288CP	Active	Production	PDIP (P)   8	50   TUBE	Yes	NIPDAU	N/A for Pkg Type	0 to 70	TL288CP
TL288CP.A	Active	Production	PDIP (P)   8	50   TUBE	Yes	NIPDAU	N/A for Pkg Type	0 to 70	TL288CP
TL288CPE4	Active	Production	PDIP (P)   8	50   TUBE	-	Call TI	Call TI	0 to 70	

<sup>(1)</sup> **Status:** For more details on status, see our [product life cycle](#).

<sup>(2)</sup> **Material type:** When designated, preproduction parts are prototypes/experimental devices, and are not yet approved or released for full production. Testing and final process, including without limitation quality assurance, reliability performance testing, and/or process qualification, may not yet be complete, and this item is subject to further changes or possible discontinuation. If available for ordering, purchases will be subject to an additional waiver at checkout, and are intended for early internal evaluation purposes only. These items are sold without warranties of any kind.

<sup>(3)</sup> **RoHS values:** Yes, No, RoHS Exempt. See the [TI RoHS Statement](#) for additional information and value definition.

<sup>(4)</sup> **Lead finish/Ball material:** Parts may have multiple material finish options. Finish options are separated by a vertical ruled line. Lead finish/Ball material values may wrap to two lines if the finish value exceeds the maximum column width.

<sup>(5)</sup> **MSL rating/Peak reflow:** The moisture sensitivity level ratings and peak solder (reflow) temperatures. In the event that a part has multiple moisture sensitivity ratings, only the lowest level per JEDEC standards is shown. Refer to the shipping label for the actual reflow temperature that will be used to mount the part to the printed circuit board.

<sup>(6)</sup> **Part marking:** There may be an additional marking, which relates to the logo, the lot trace code information, or the environmental category of the part.

Multiple part markings will be inside parentheses. Only one part marking contained in parentheses and separated by a "~" will appear on a part. If a line is indented then it is a continuation of the previous line and the two combined represent the entire part marking for that device.

**Important Information and Disclaimer:** The information provided on this page represents TI's knowledge and belief as of the date that it is provided. TI bases its knowledge and belief on information provided by third parties, and makes no representation or warranty as to the accuracy of such information. Efforts are underway to better integrate information from third parties. TI has taken and continues to take reasonable steps to provide representative and accurate information but may not have conducted destructive testing or chemical analysis on incoming materials and chemicals. TI and TI suppliers consider certain information to be proprietary, and thus CAS numbers and other limited information may not be available for release.

In no event shall TI's liability arising out of such information exceed the total purchase price of the TI part(s) at issue in this document sold by TI to Customer on an annual basis.

## TUBE



\*All dimensions are nominal

Device	Package Name	Package Type	Pins	SPQ	L (mm)	W (mm)	T (μm)	B (mm)
TL288CP	P	PDIP	8	50	506	13.97	11230	4.32
TL288CP.A	P	PDIP	8	50	506	13.97	11230	4.32

P (R-PDIP-T8)

PLASTIC DUAL-IN-LINE PACKAGE



- NOTES:
- A. All linear dimensions are in inches (millimeters).
  - B. This drawing is subject to change without notice.
  - C. Falls within JEDEC MS-001 variation BA.

## IMPORTANT NOTICE AND DISCLAIMER

TI PROVIDES TECHNICAL AND RELIABILITY DATA (INCLUDING DATASHEETS), DESIGN RESOURCES (INCLUDING REFERENCE DESIGNS), APPLICATION OR OTHER DESIGN ADVICE, WEB TOOLS, SAFETY INFORMATION, AND OTHER RESOURCES "AS IS" AND WITH ALL FAULTS, AND DISCLAIMS ALL WARRANTIES, EXPRESS AND IMPLIED, INCLUDING WITHOUT LIMITATION ANY IMPLIED WARRANTIES OF MERCHANTABILITY, FITNESS FOR A PARTICULAR PURPOSE OR NON-INFRINGEMENT OF THIRD PARTY INTELLECTUAL PROPERTY RIGHTS.

These resources are intended for skilled developers designing with TI products. You are solely responsible for (1) selecting the appropriate TI products for your application, (2) designing, validating and testing your application, and (3) ensuring your application meets applicable standards, and any other safety, security, regulatory or other requirements.

These resources are subject to change without notice. TI grants you permission to use these resources only for development of an application that uses the TI products described in the resource. Other reproduction and display of these resources is prohibited. No license is granted to any other TI intellectual property right or to any third party intellectual property right. TI disclaims responsibility for, and you fully indemnify TI and its representatives against any claims, damages, costs, losses, and liabilities arising out of your use of these resources.

TI's products are provided subject to [TI's Terms of Sale](#), [TI's General Quality Guidelines](#), or other applicable terms available either on [ti.com](https://www.ti.com) or provided in conjunction with such TI products. TI's provision of these resources does not expand or otherwise alter TI's applicable warranties or warranty disclaimers for TI products. Unless TI explicitly designates a product as custom or customer-specified, TI products are standard, catalog, general purpose devices.

TI objects to and rejects any additional or different terms you may propose.

Copyright © 2025, Texas Instruments Incorporated

Last updated 10/2025