

User's Guide

SLIDEBY-MAG-ACC User's Guide



ABSTRACT

This document serves to accompany the design files for the SLIDEBY-MAG-ACC attachment for the magnetic sensing evaluation kits (EVMs) that interface with [TI-SCB](#) such as the [TMAG5170 EVM](#). In addition to this guide, the design files are provided as an example and may be used in a 3D printer to generate a demonstration of tracking linear movement using a three-dimensional Hall effect sensor.

Note

Design files described in this document can be downloaded from [Slide-By Design Files](#).

Table of Contents

1 Introduction.....	2
2 Assembly Guide.....	3
3 Revision History.....	5

Trademarks

All trademarks are the property of their respective owners.

1 Introduction

This SLIDEBY-MAG-ACC attachment uses an N42 grade cylindrical magnet as a magnetic field source to demonstrate the ability of magnetic sensors to track linear motion of a nearby magnet. The magnet is glued into the slider object, which then may pass freely down the length of the slider track. Slider options for both a vertically aligned or horizontally aligned magnet are included in the EVM kit. More details about this function are described in [Tracking Slide-By Displacement with Linear Hall-Effect Sensors](#).

Examples of expected magnetic field data captured using the TMAG5170UEVM are shown in Figure 1-1 and Figure 1-2.

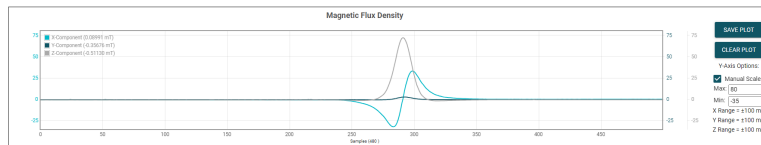


Figure 1-1. Slide-by With Vertical Magnet Alignment

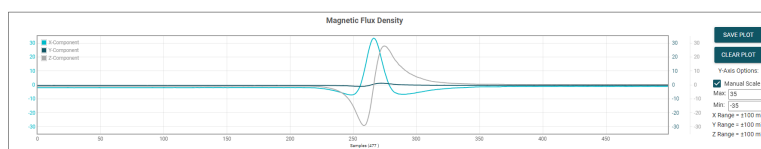


Figure 1-2. Slide-by With Horizontal Magnet Alignment

Nylon components were selected as they are non-magnetic and will not interfere with the magnetic field and bond well when glued.

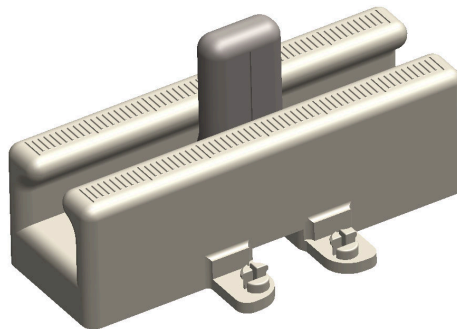


Figure 1-3. TMAG5170 Slide-By Attachment

This function can be further explored using the slide-by reference design in the TI Magnetic Sense Simulator tool (TIMSS) available at <https://webench.ti.com/timss/>.

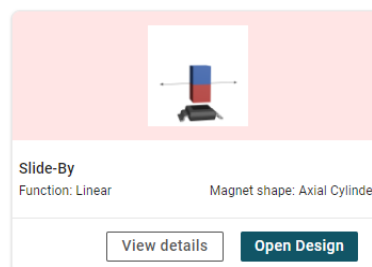


Figure 1-4. TIMSS Slide-by Reference Design

2 Assembly Guide

SLIDEBY-MAG-ACC kits ordered from TI.com will already come pre-assembled, but in cases where the kit is printed locally, please follow steps 1-3 described below.

Item	Description	Quantity
Slider Track	Track.STL	1
Slider	Slider.STL	1
1/4" dia. x 3/16" thick Cylindrical magnet	NdFeB (N42): available at K&J Magnetics	1
8333-20G	Super Glue	0.02oz

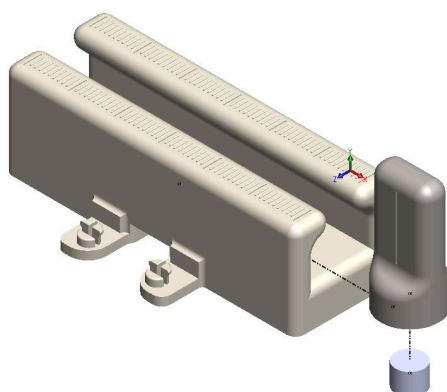


Figure 2-1. Exploded View

1. Print the Slider (Slider.STL).

This piece carries the magnet and provide a grip to control the magnet motion in the track. Additionally, a centerline is visible to assist with locating the magnet center.



Figure 2-2. Slider

2. **Glue the magnet into the bottom opening of the slider.**

Glue the magnet into the slider. The magnet should seat flush with the bottom of the slider.



Figure 2-3. Complete Slider Assembly

3. **Print the Slider Track (Track.STL).**

This is the central fixture of the assembly. It clips to the EVM and provides a guided path for the magnet to pass over the sensor. The markings along the top of the track are spaced at 1mm intervals.

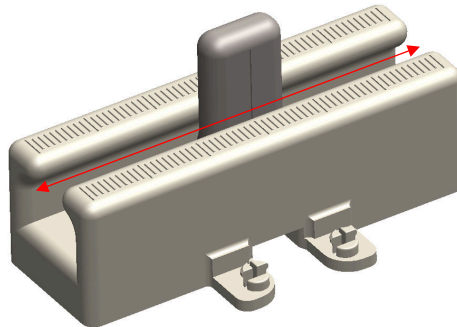


Figure 2-4. Slide-By Function

4. **Attach the slider track to the magnetic sensing EVM.**

Slide the platform end of the EVM underneath the window in the track, and align the cut holes in the EVM above the circular clips in the track base. Apply some downward force to clip the EVM into the track base. The first insertion may require more effort, but subsequent insertions should snap easily. Once the base is attached to the EVM, insert the desired slider through the opening at either end of the track.

Connect the EVM to the [TI-SCB](#), and follow the relevant instructions to program the device provided in the device-specific EVM user's guide.

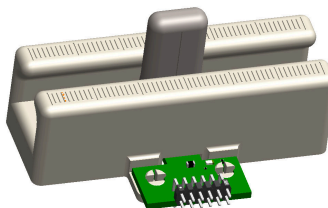


Figure 2-5. EVM Attach

3 Revision History

NOTE: Page numbers for previous revisions may differ from page numbers in the current version.

Changes from Revision * (September 2021) to Revision A (April 2024)	Page
<ul style="list-style-type: none">Updated the document to reflect release of the SLIDEBY-MAG-ACC on TI.com as a generic attachment for EVMs compatible with TI-SCB.....	1

IMPORTANT NOTICE AND DISCLAIMER

TI PROVIDES TECHNICAL AND RELIABILITY DATA (INCLUDING DATA SHEETS), DESIGN RESOURCES (INCLUDING REFERENCE DESIGNS), APPLICATION OR OTHER DESIGN ADVICE, WEB TOOLS, SAFETY INFORMATION, AND OTHER RESOURCES "AS IS" AND WITH ALL FAULTS, AND DISCLAIMS ALL WARRANTIES, EXPRESS AND IMPLIED, INCLUDING WITHOUT LIMITATION ANY IMPLIED WARRANTIES OF MERCHANTABILITY, FITNESS FOR A PARTICULAR PURPOSE OR NON-INFRINGEMENT OF THIRD PARTY INTELLECTUAL PROPERTY RIGHTS.

These resources are intended for skilled developers designing with TI products. You are solely responsible for (1) selecting the appropriate TI products for your application, (2) designing, validating and testing your application, and (3) ensuring your application meets applicable standards, and any other safety, security, regulatory or other requirements.

These resources are subject to change without notice. TI grants you permission to use these resources only for development of an application that uses the TI products described in the resource. Other reproduction and display of these resources is prohibited. No license is granted to any other TI intellectual property right or to any third party intellectual property right. TI disclaims responsibility for, and you will fully indemnify TI and its representatives against, any claims, damages, costs, losses, and liabilities arising out of your use of these resources.

TI's products are provided subject to [TI's Terms of Sale](#) or other applicable terms available either on [ti.com](#) or provided in conjunction with such TI products. TI's provision of these resources does not expand or otherwise alter TI's applicable warranties or warranty disclaimers for TI products.

TI objects to and rejects any additional or different terms you may have proposed.

Mailing Address: Texas Instruments, Post Office Box 655303, Dallas, Texas 75265
Copyright © 2024, Texas Instruments Incorporated