

# TPS51511 Buck Controller Evaluation Module User's Guide



## ABSTRACT

This user's guide contains information pertaining to the TPS51511 operating specification, the EVM schematic, the bill of materials, and the printed-circuit board layout.

---

## Table of Contents

<b>1 Hardware</b> .....	<b>2</b>
1.1 Operating Specification, TPS51511.....	2
1.2 Schematic.....	3
1.3 Bill of Materials.....	4
1.4 Board Layout Using TPS51511RHL (QFN 20).....	5
1.5 Test Setup and Procedures.....	9
<b>2 Revision History</b> .....	<b>10</b>

## Trademarks

All trademarks are the property of their respective owners.

# 1 Hardware

## 1.1 Operating Specification, TPS51511

**Table 1-1. Common Parameters**

CH1: Switcher					
PARAMETER	TEST CONDITIONS	MIN	TYP	MAX	UNIT
Input voltage range (VIN)		3		25	V
Input voltage range (V5IN)		4.75		5.25	V
Operating frequency			350		kHz
Output voltage	High performance		1.2	400 k	V
	Low performance		1.1		
	Adjustable	0.75		3.3	
Output current			15		A
Current limit			18		A
CH2: LDO					
PARAMETER	TEST CONDITIONS	MIN	TYP	MAX	UNIT
Input voltage range		1.5		5	V
Output voltage	VGA I/O power		1.2		V
	Adjustable	0.75		3.3	
Output current				2	A
Current limit			2.5		A

## 1.2 Schematic

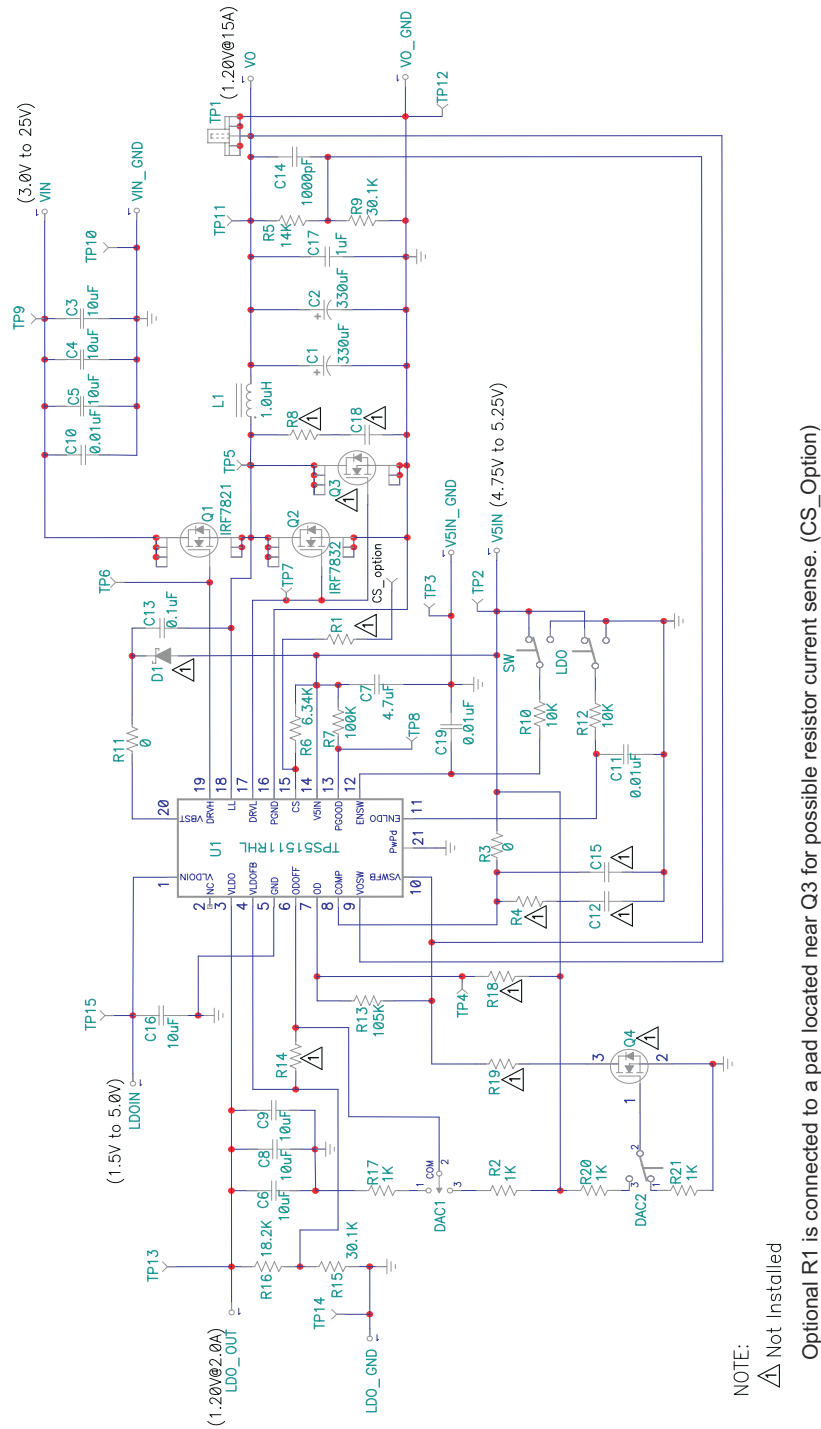


Figure 1-1. TPS51511RHL EVM Schematic Diagram (Switcher 1.2 V at 15 A, LDO 1.2 V at 2 A)

### 1.3 Bill of Materials

Table 1-2 presents The TPS51511EVM bill of materials.

**Table 1-2. TPS51511EVM Bill of Materials**

RefDes	Pattern Name	Value	MFR	Part Number
C1, C2	D2E	330 $\mu$ F/2.5 V	Sanyo	2R5TPE330MC
C3, C4, C5	1210	10 $\mu$ F/25 V	TDK	C3225X5R1E106M
C6, C8, C9, C16	0805	10 $\mu$ F/6.3 V	TDK	C2012X5R0J106K
C7	0603	4.7 $\mu$ F/6.3 V	TDK	C1608X5R0J475M
C10, C11, C19	0603	0.01 $\mu$ F/50 V	TDK	C1608X7R1H103M
C13	0603	0.1 $\mu$ F/50 V	TDK	C1608X7R1H104K
C14	0603	1000 pF/50 V	TDK	C1608X7R1H102K
C17	0805	1 $\mu$ F/ 25 V	TDK	C2012X7R1E105K
C18	0603	Not Installed	TDK	C1608JB1H102M (1 nF/50 V)
C12, C15	0805	Not Installed	TDK	C1608X5R0JxxxM
Q1	SO-8	IRF7821	IR	IRF7821
Q2	SO-8	IRF7832	IR	IRF7832
Q3	SO-8	Not Installed	IR	IRF7832
Q4	SOT-23	Not Installed	Vishay	2N7002
D2	SOD-123	Not Installed	On Semi	MBR0530
L1	IND_IHLP- 5050	1.0 $\mu$ H	Vishay	IHLP5050CEER1R0M01
DAC1	ON-OFF-ON	G-13AP	NKK	G13AP
DAC2, LDO, SW	ON-ON	G-12AP	NKK	G12AP
R3	0603	0	Vishay	Std
R11	0805	0	Vishay	Std
R2, R17, R20, R21	0603	1 K	Vishay	Std
R6	0603	6.34 K	Vishay	Std
R10, R12	0603	10 K	Vishay	Std
R5	0603	14 K	Vishay	Std
R16	0603	18.2 K	Vishay	Std
R9, R15	0603	30.1 K	Vishay	Std
R7	0603	100 K	Vishay	Std
R13	0603	105 K	Vishay	Std
R1, R14	0603	Not Installed	Vishay	0
R18	0603	Not Installed	Vishay	100K
R19	0603	Not Installed	Vishay	Depends on 2bit DAC Vout set
R4	0603	Not Installed	Vishay	Std
R8	0805	Not Installed	Vishay	Std
U1	QFN 20	TPS51511	TI	TPS51511RHL
TP1	TP-Probe	131-4244-00	Tektronix	131-4244-00
TP2–TP15	TP loop	5002	Keystone Elect.	50021
V5IN, V5IN_GND, VIN, VIN_GND, VO, VO_GND, LDOIN, LDO_GND, LDO_OUT	Turret Dbl	1582-2	Keystone Elect.	1582-2
<b>HARDWARE</b>				
Standoff	SJ5003	Bumpon 0.44 × 0.20 Black (4 Corners bottom)	3M	SJ5003 (Black)

## 1.4 Board Layout Using TPS51511RHL (QFN 20)

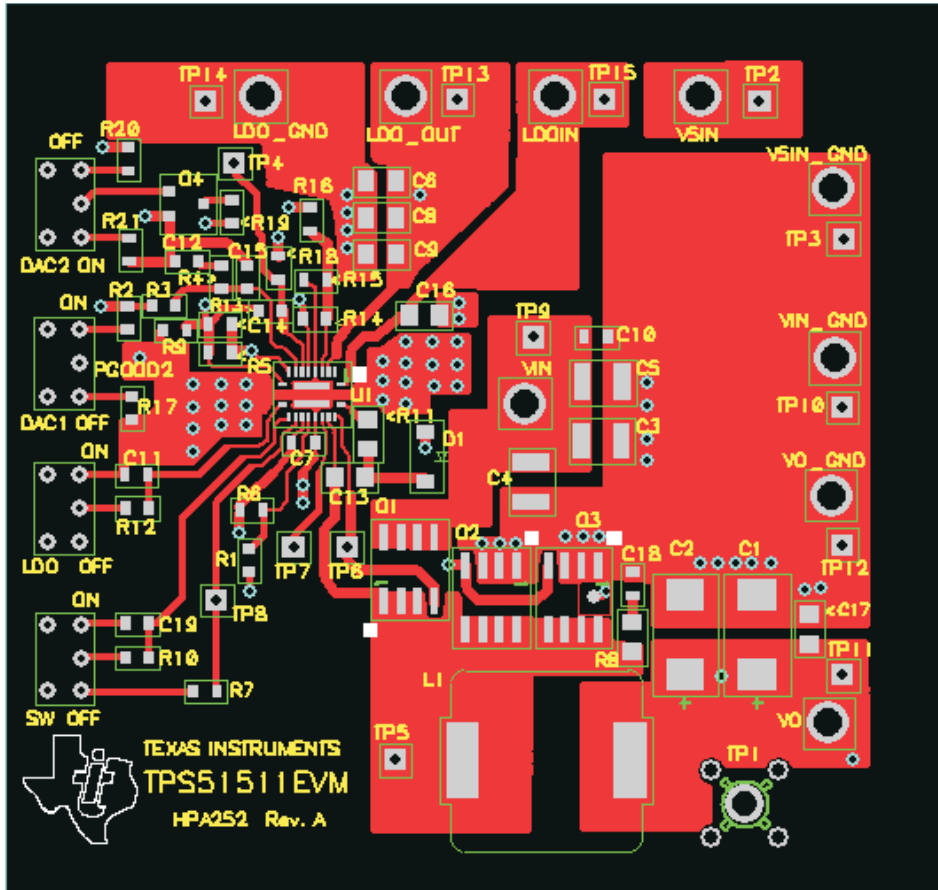
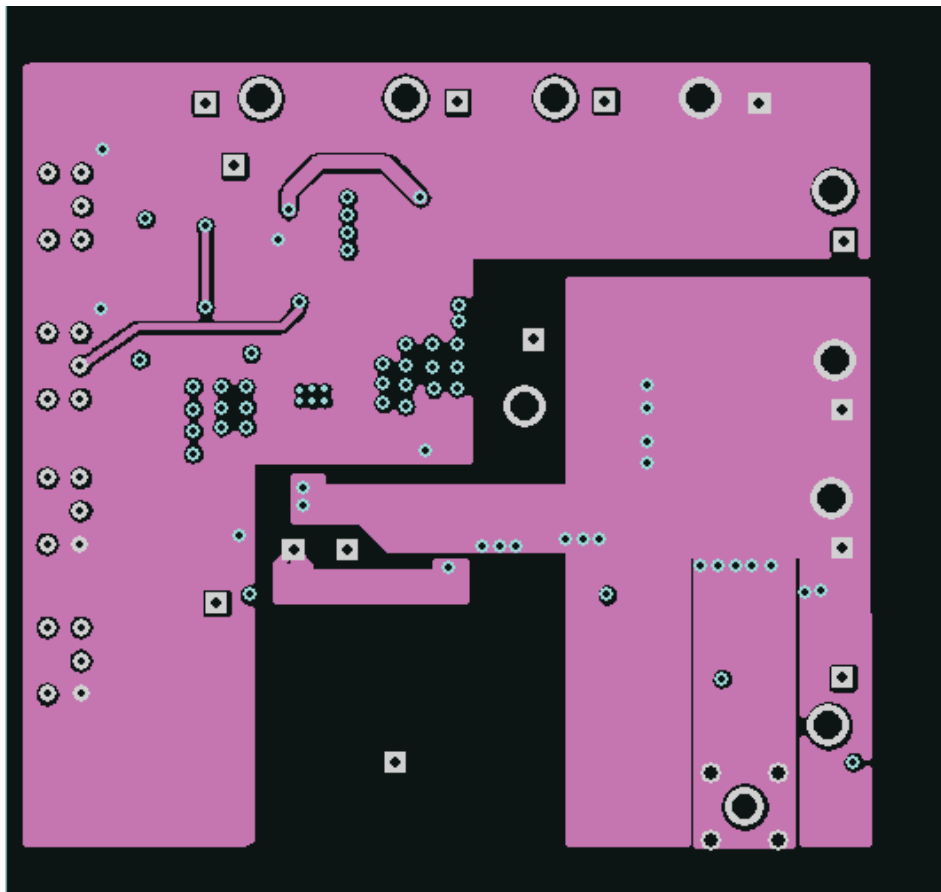


Figure 1-2. Top Layer Copper



**Figure 1-3. Layer 2 (Internal 1) Copper**

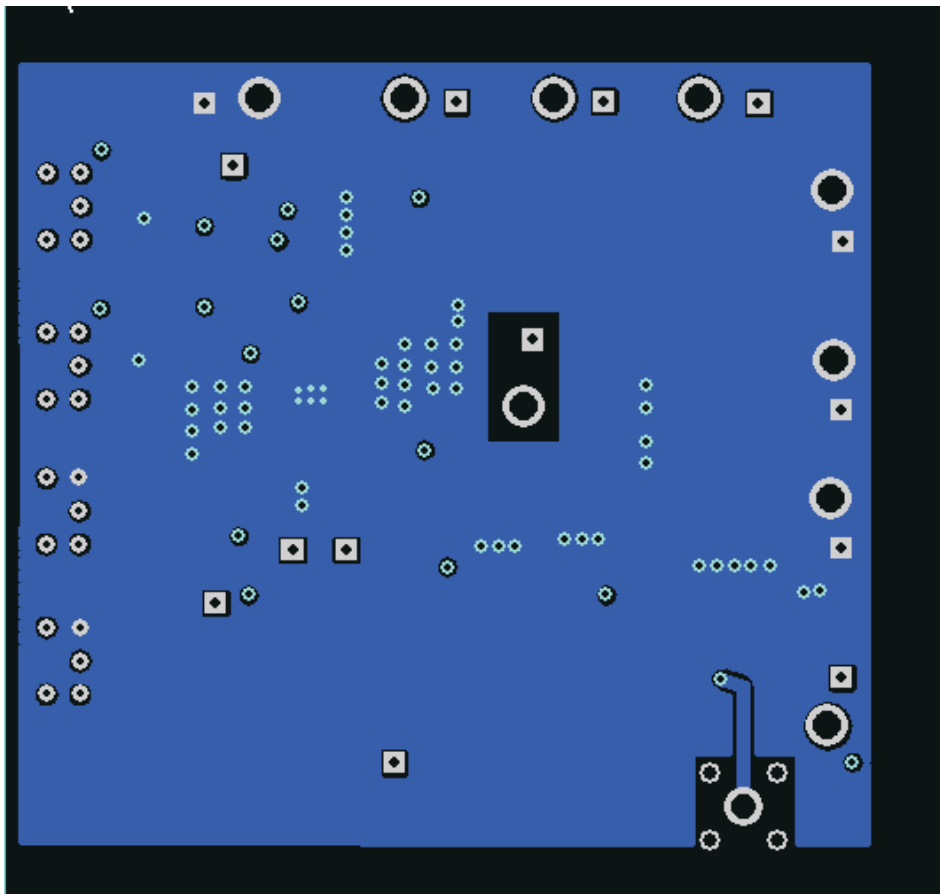
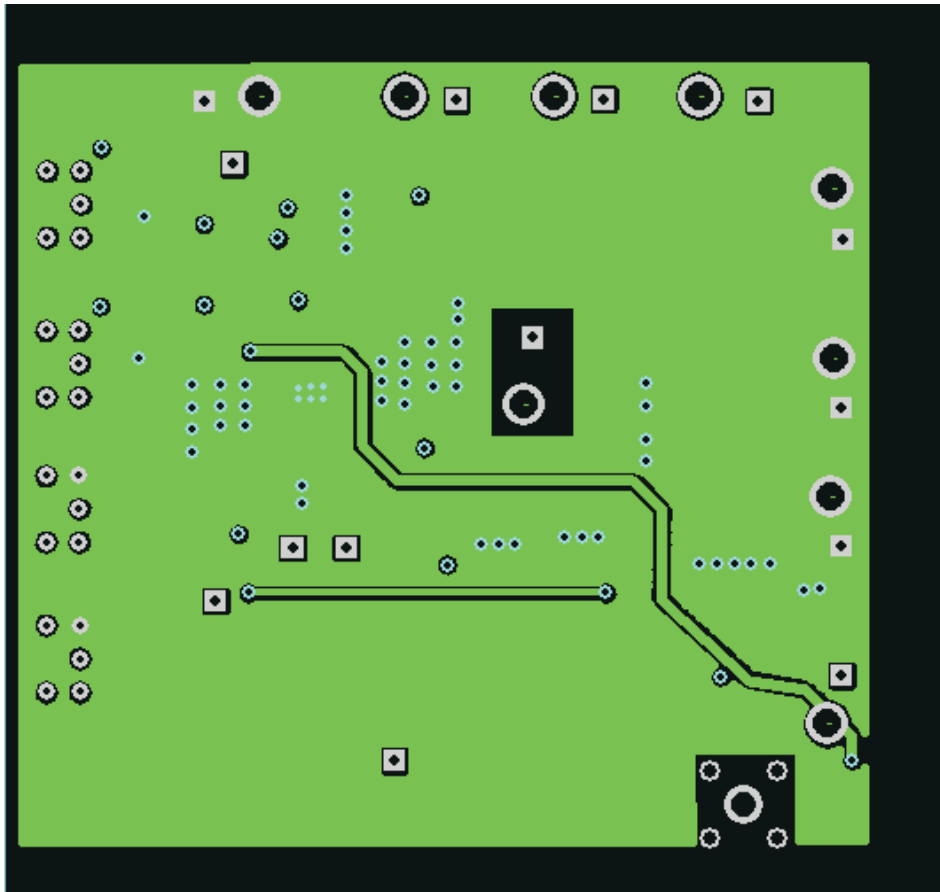


Figure 1-4. Layer 3 (Internal 2) Copper



**Figure 1-5. Bottom Layer Copper**



## 1.5 Test Setup and Procedures

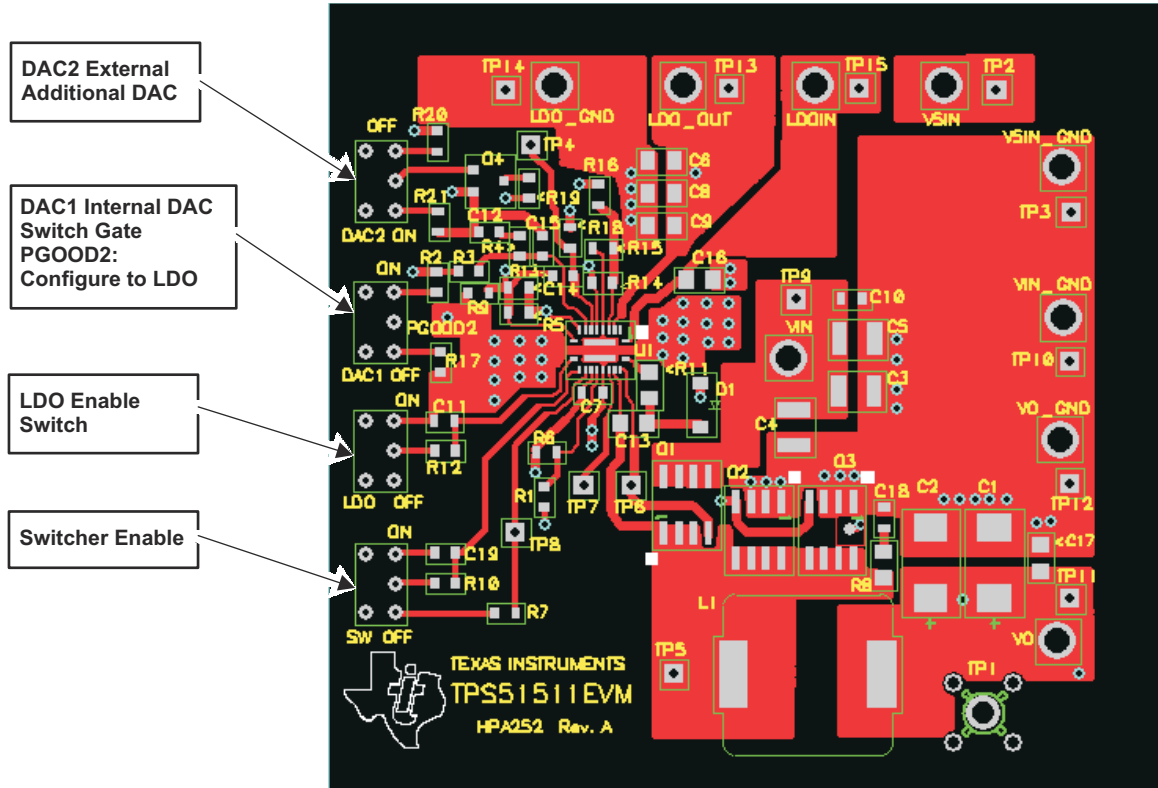


Figure 1-6. Switches and Jumpers

Table 1-3. Various Switch Settings

Switch	Function			
	On	Off	Floating	Components to Add for Specific Configuration
DAC2	Low	High	N/A	R19, Q4
DAC1	High	Low	LDO Power Good	R14, R18 (LDO Power Good)
LDO Switch	High	Low	N/A	N/A
Sw (Switcher Enable)	High	Low	N/A	N/A



- 
- Updated the user's guide title..... 2
-

## IMPORTANT NOTICE AND DISCLAIMER

TI PROVIDES TECHNICAL AND RELIABILITY DATA (INCLUDING DATA SHEETS), DESIGN RESOURCES (INCLUDING REFERENCE DESIGNS), APPLICATION OR OTHER DESIGN ADVICE, WEB TOOLS, SAFETY INFORMATION, AND OTHER RESOURCES "AS IS" AND WITH ALL FAULTS, AND DISCLAIMS ALL WARRANTIES, EXPRESS AND IMPLIED, INCLUDING WITHOUT LIMITATION ANY IMPLIED WARRANTIES OF MERCHANTABILITY, FITNESS FOR A PARTICULAR PURPOSE OR NON-INFRINGEMENT OF THIRD PARTY INTELLECTUAL PROPERTY RIGHTS.

These resources are intended for skilled developers designing with TI products. You are solely responsible for (1) selecting the appropriate TI products for your application, (2) designing, validating and testing your application, and (3) ensuring your application meets applicable standards, and any other safety, security, regulatory or other requirements.

These resources are subject to change without notice. TI grants you permission to use these resources only for development of an application that uses the TI products described in the resource. Other reproduction and display of these resources is prohibited. No license is granted to any other TI intellectual property right or to any third party intellectual property right. TI disclaims responsibility for, and you will fully indemnify TI and its representatives against, any claims, damages, costs, losses, and liabilities arising out of your use of these resources.

TI's products are provided subject to [TI's Terms of Sale](#) or other applicable terms available either on [ti.com](http://ti.com) or provided in conjunction with such TI products. TI's provision of these resources does not expand or otherwise alter TI's applicable warranties or warranty disclaimers for TI products.

TI objects to and rejects any additional or different terms you may have proposed.

Mailing Address: Texas Instruments, Post Office Box 655303, Dallas, Texas 75265  
Copyright © 2022, Texas Instruments Incorporated