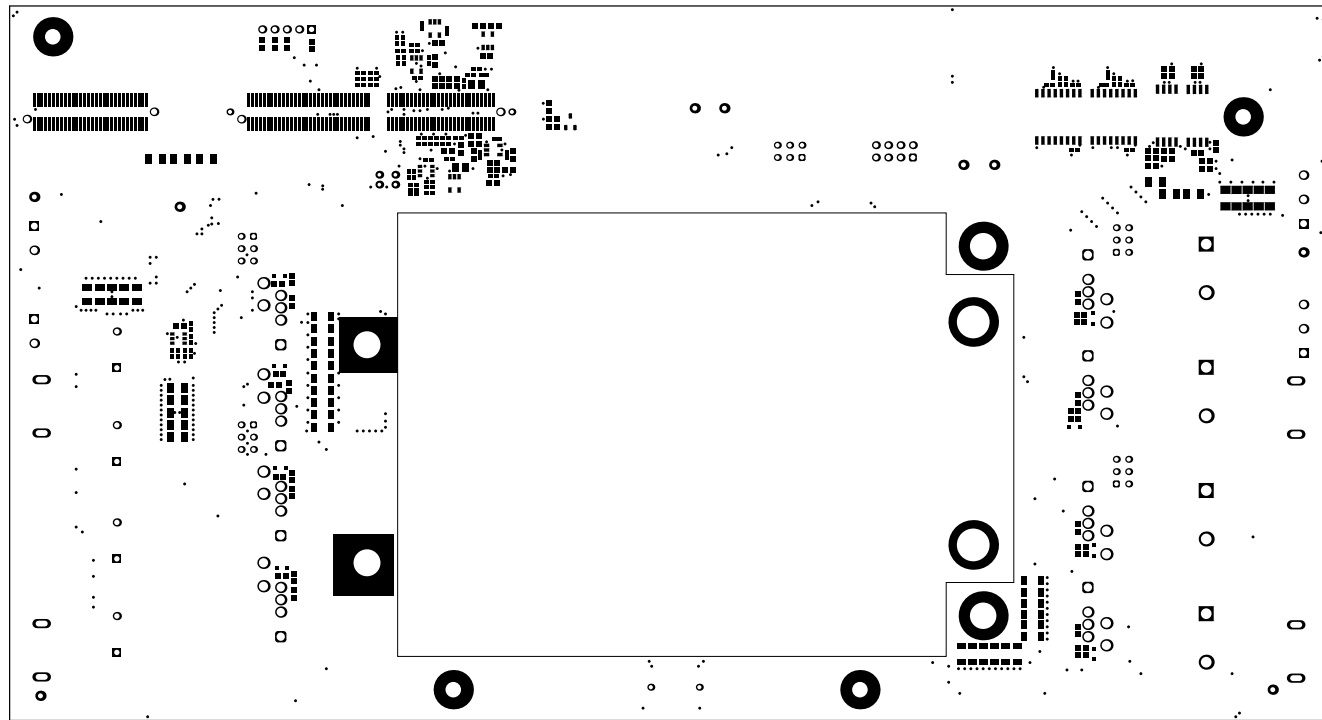
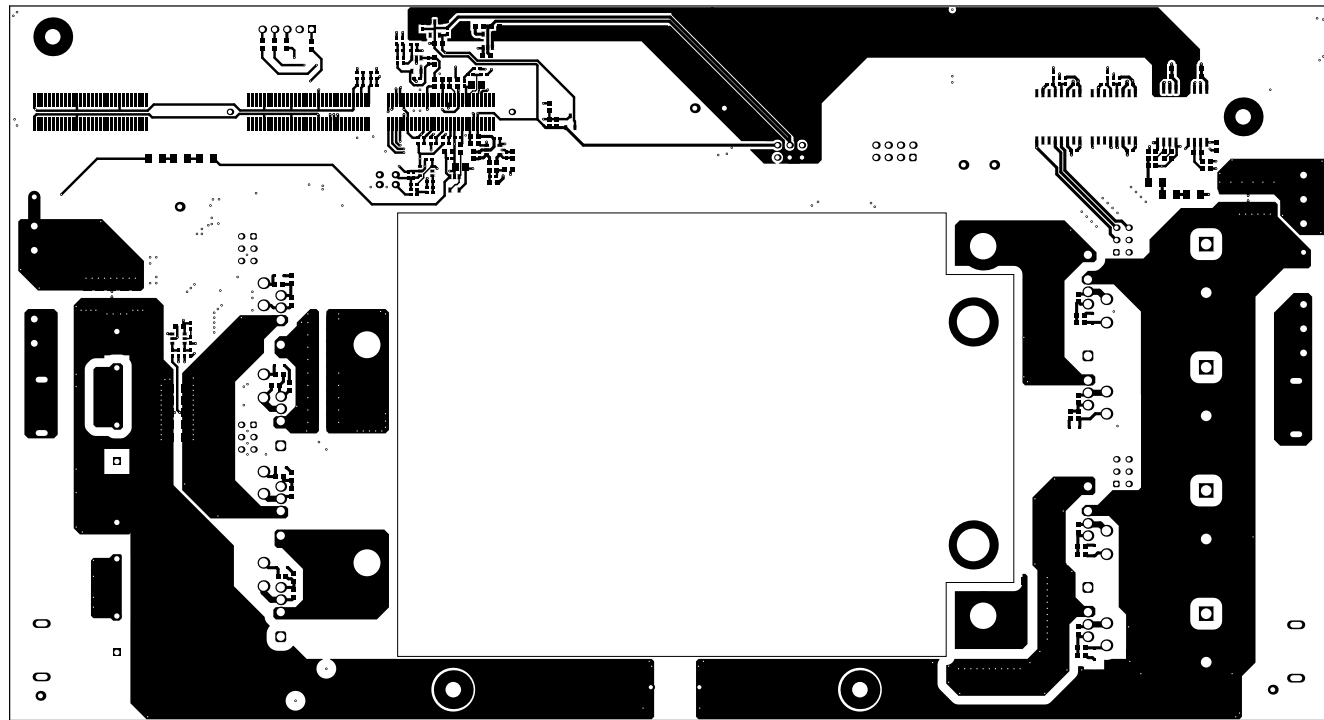


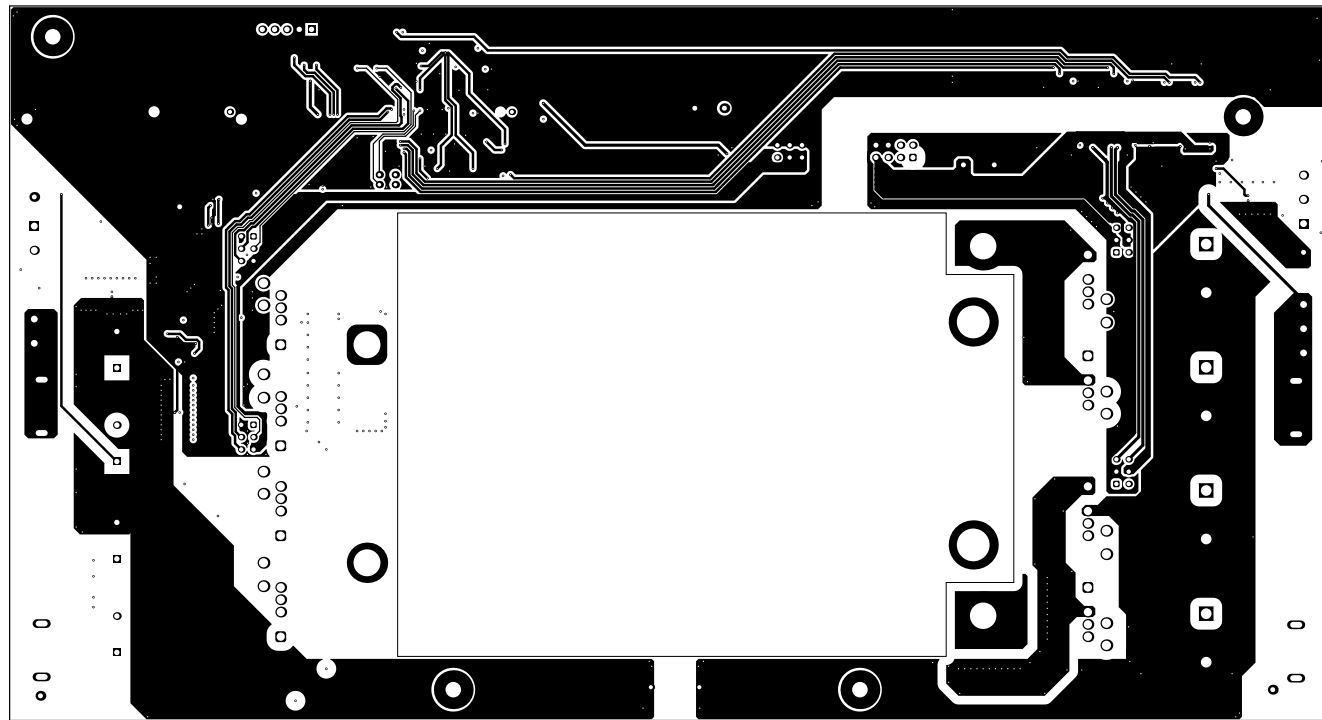
ALL ARTWORK VIEWED FROM TOP SIDE	BOARD #: PMP21495	REV: B	SVN REV: Not In VersionControl
LAYER NAME = Top Overlay	TID #:	TIDM-02002	
PLOT NAME = Top Overlay	GENERATED : 3/6/2019	11:54:44 AM	TEXAS INSTRUMENTS



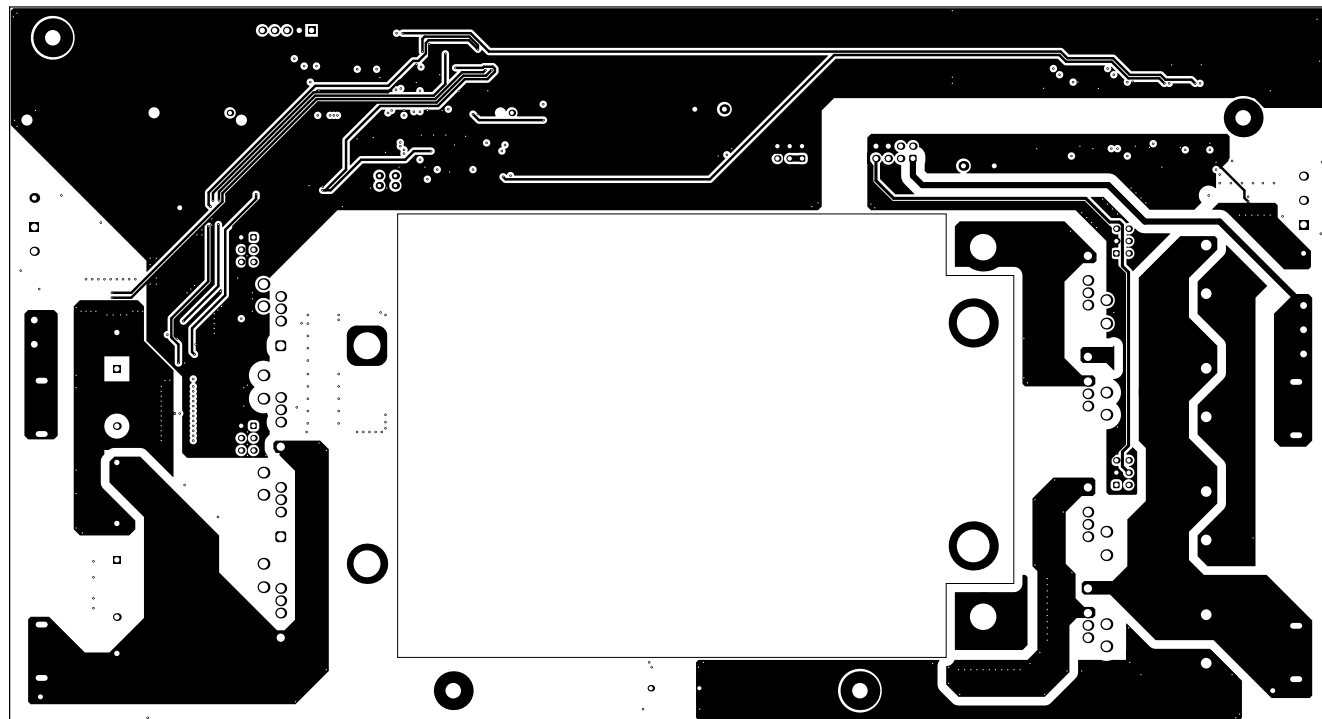
ALL ARTWORK VIEWED FROM TOP SIDE	BOARD #: PMP21495	REV: B	SVN REV: Not In VersionControl	
LAYER NAME = Top Solder	TID #: TIDM-02002			
PLOT NAME = Top Solder Mask	GENERATED : 3/6/2019	11:54:45 AM	TEXAS INSTRUMENTS	



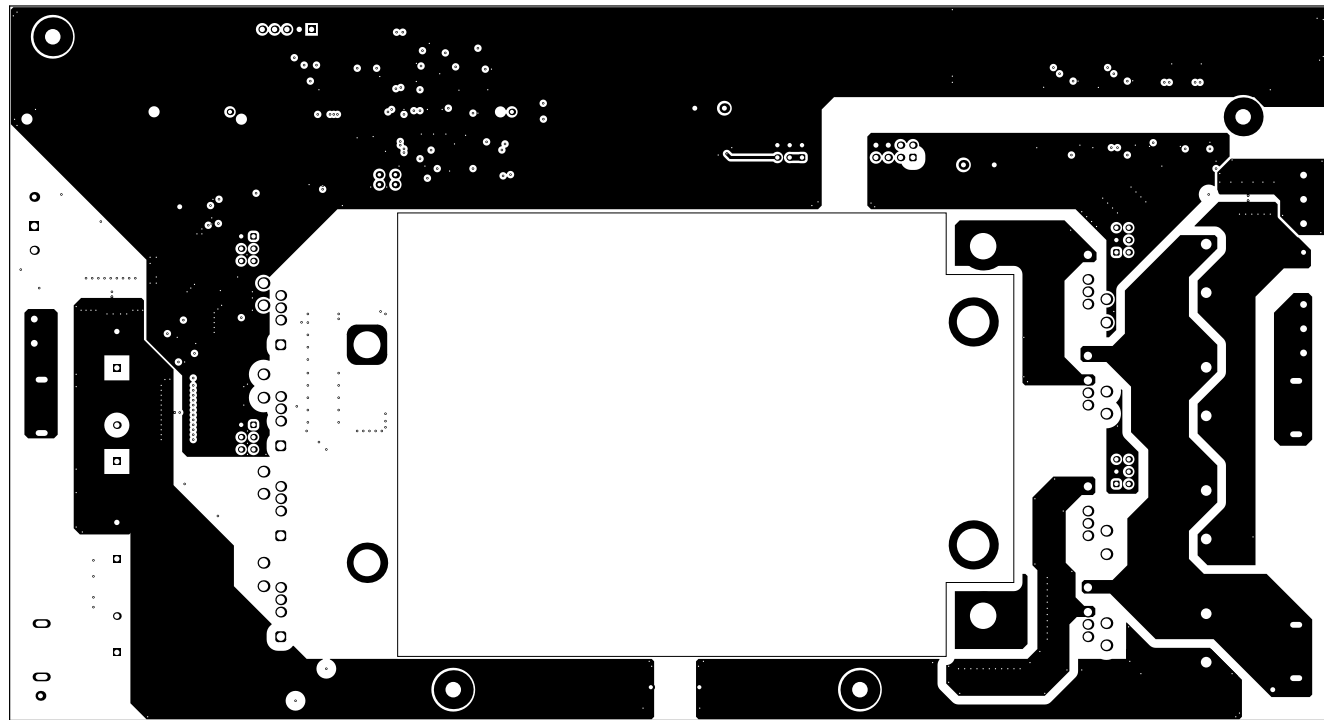
ALL ARTWORK VIEWED FROM TOP SIDE	BOARD #: PMP21495	REV: B	SVN REV: Not In VersionControl
LAYER NAME = Top Layer	TID #: TIDM-02002		
PLOT NAME = Top Layer	GENERATED : 3/6/2019	11:54:47 AM	TEXAS INSTRUMENTS



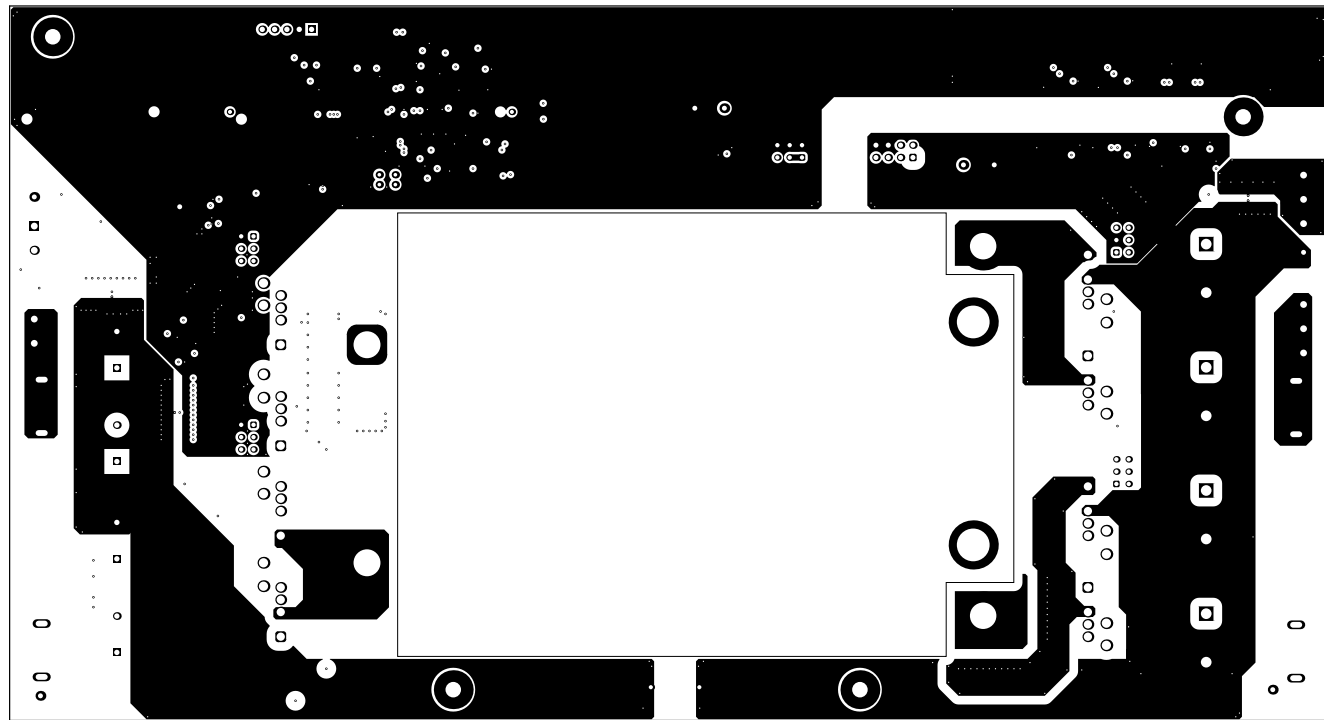
ALL ARTWORK VIEWED FROM TOP SIDE	BOARD #: PMP21495	REV: B	SVN REV: Not In VersionControl
LAYER NAME =	TID #: TIDM-02002		
PLOT NAME = Signal Layer 1	GENERATED : 3/6/2019	11:54:48 AM	TEXAS INSTRUMENTS



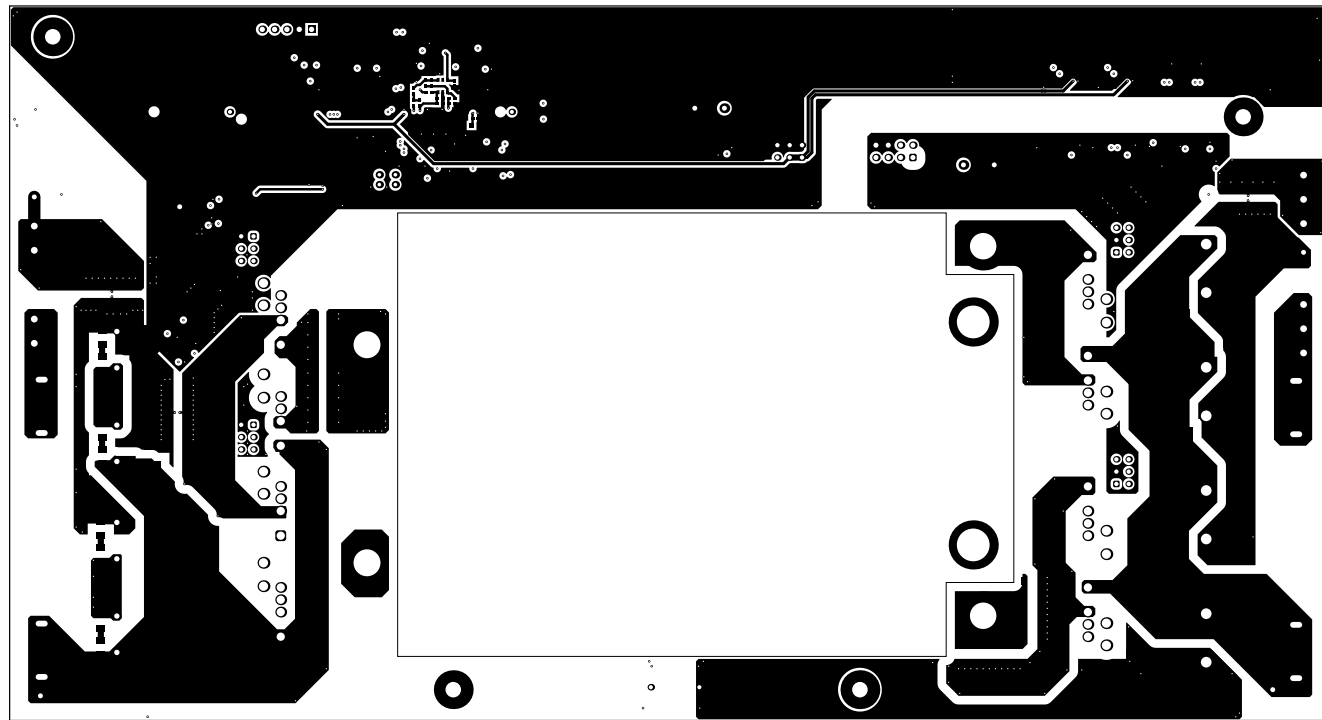
ALL ARTWORK VIEWED FROM TOP SIDE	BOARD #: PMP21495	REV: B	SVN REV: Not In VersionControl
LAYER NAME =	TID #: TIDM-02002		
PLOT NAME = Signal Layer 2	GENERATED : 3/6/2019	11:54:49 AM	TEXAS INSTRUMENTS



ALL ARTWORK VIEWED FROM TOP SIDE	BOARD #: PMP21495	REV: B	SVN REV: Not In VersionControl
LAYER NAME =	TID #: TIDM-02002		
PLOT NAME = Signal Layer 3	GENERATED : 3/6/2019	11:54:51 AM	TEXAS INSTRUMENTS

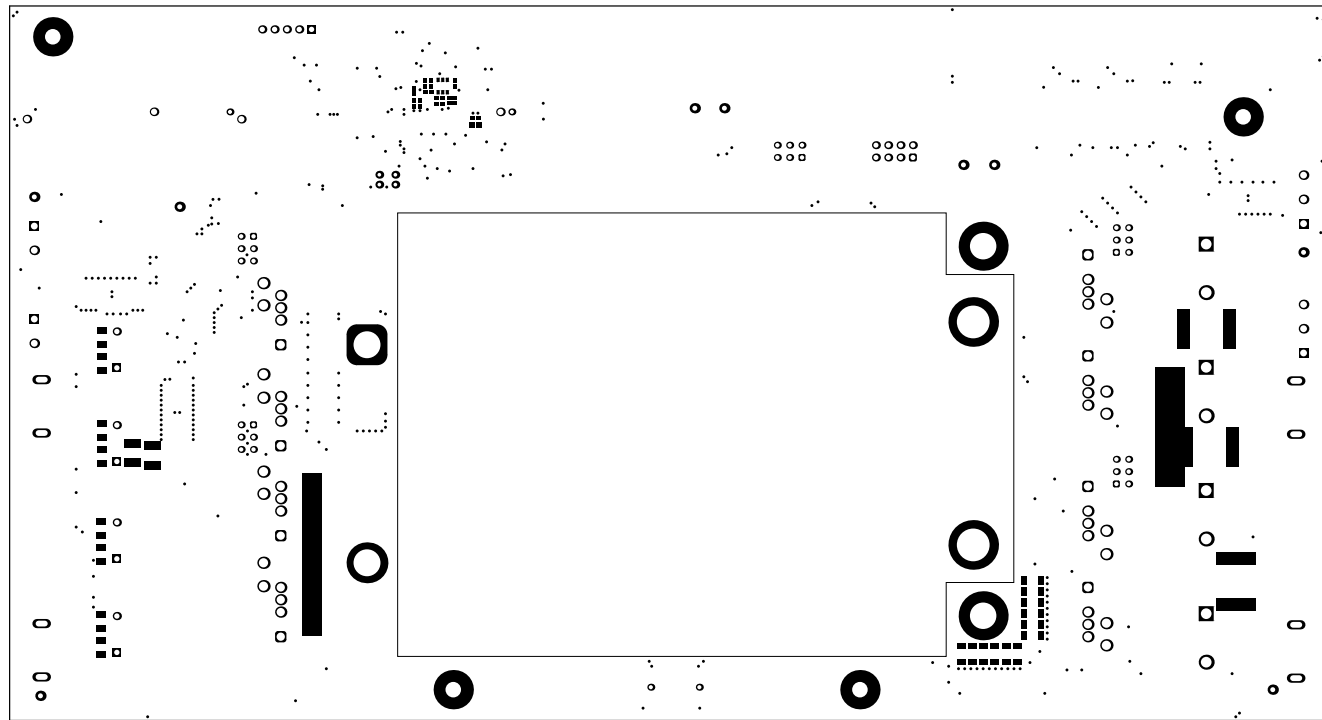


ALL ARTWORK VIEWED FROM TOP SIDE	BOARD #: PMP21495	REV: B	SVN REV: Not In VersionControl
LAYER NAME =	TID #: TIDM-02002		
PLOT NAME = Signal Layer 4	GENERATED : 3/6/2019	11:54:52 AM	TEXAS INSTRUMENTS

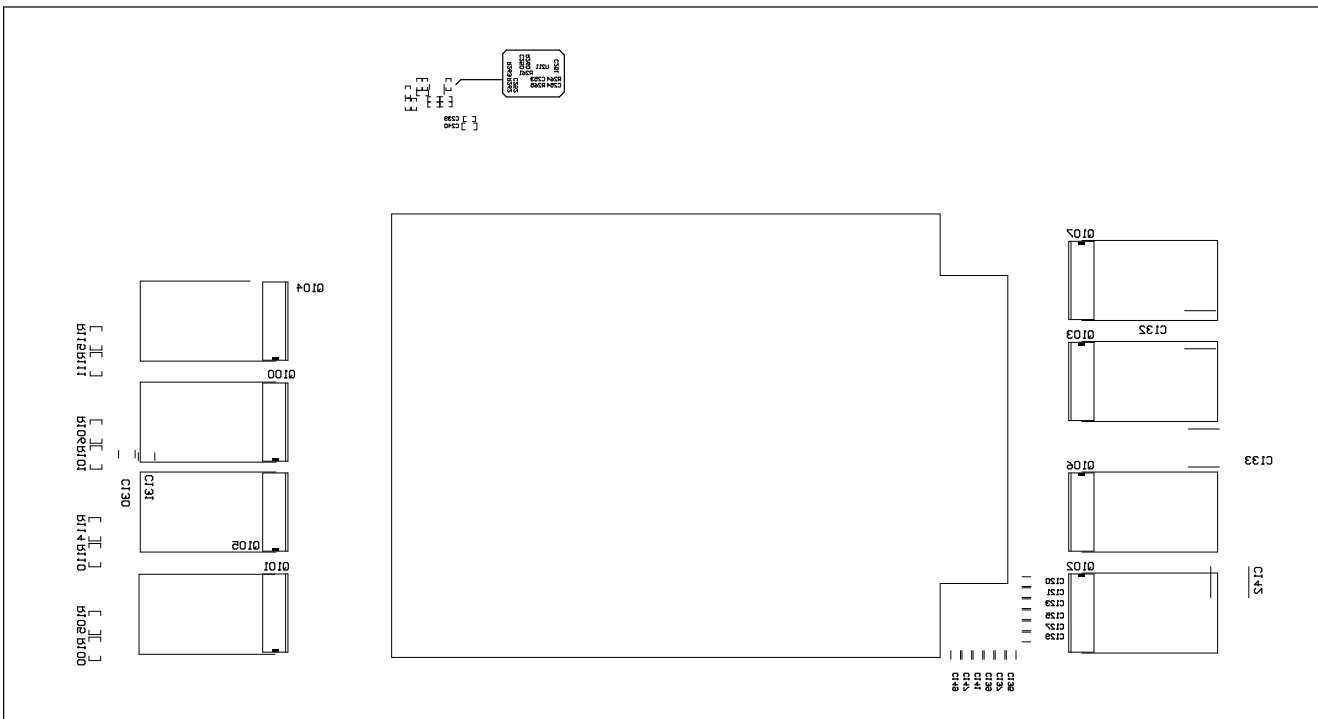


ALL ARTWORK VIEWED FROM TOP SIDE	BOARD #: PMP21495	REV: B	SVN REV: Not In VersionControl
LAYER NAME = Bottom Layer	TID #:	TIDM-02002	
PLOT NAME = Bottom Layer	GENERATED : 3/6/2019	11:54:54 AM	TEXAS INSTRUMENTS





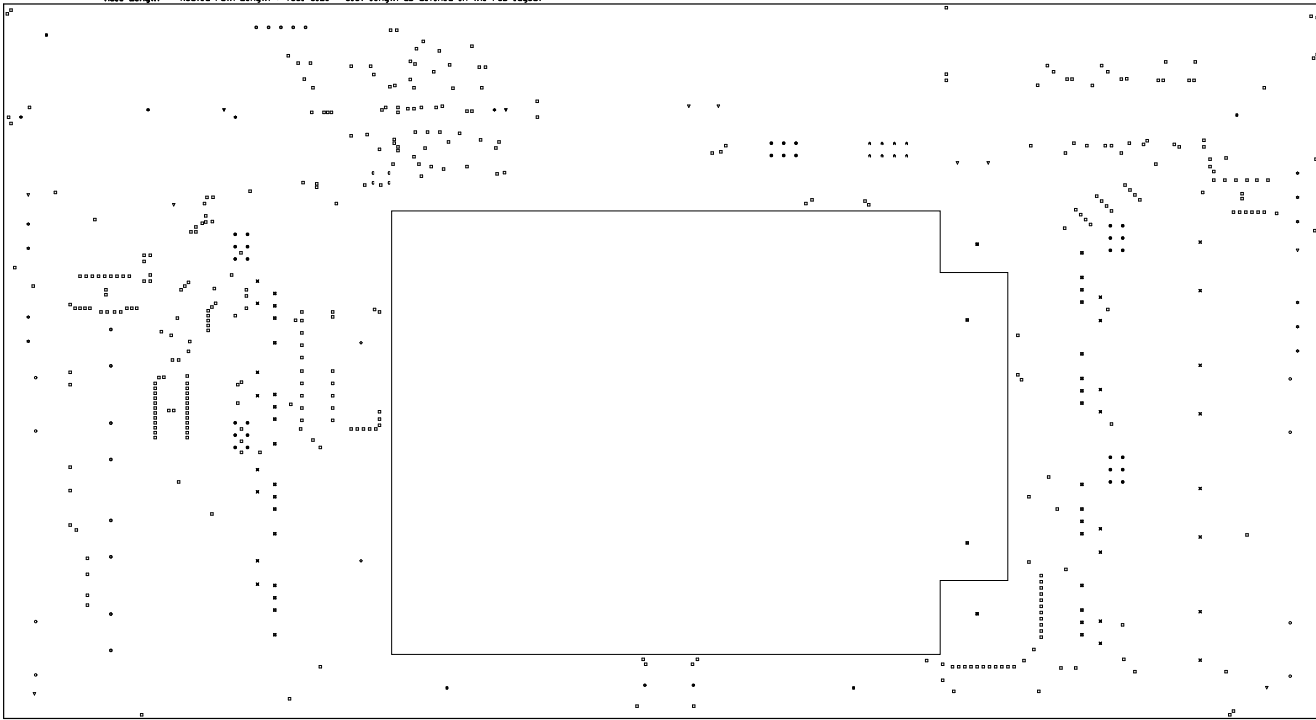
ALL ARTWORK VIEWED FROM TOP SIDE	BOARD #: PMP21495	REV: B	SVN REV: Not In VersionControl
LAYER NAME = Bottom Solder	TID #: TIDM-02002		
PLOT NAME = Bottom Solder Mask	GENERATED : 3/6/2019	11:54:55 AM	TEXAS INSTRUMENTS



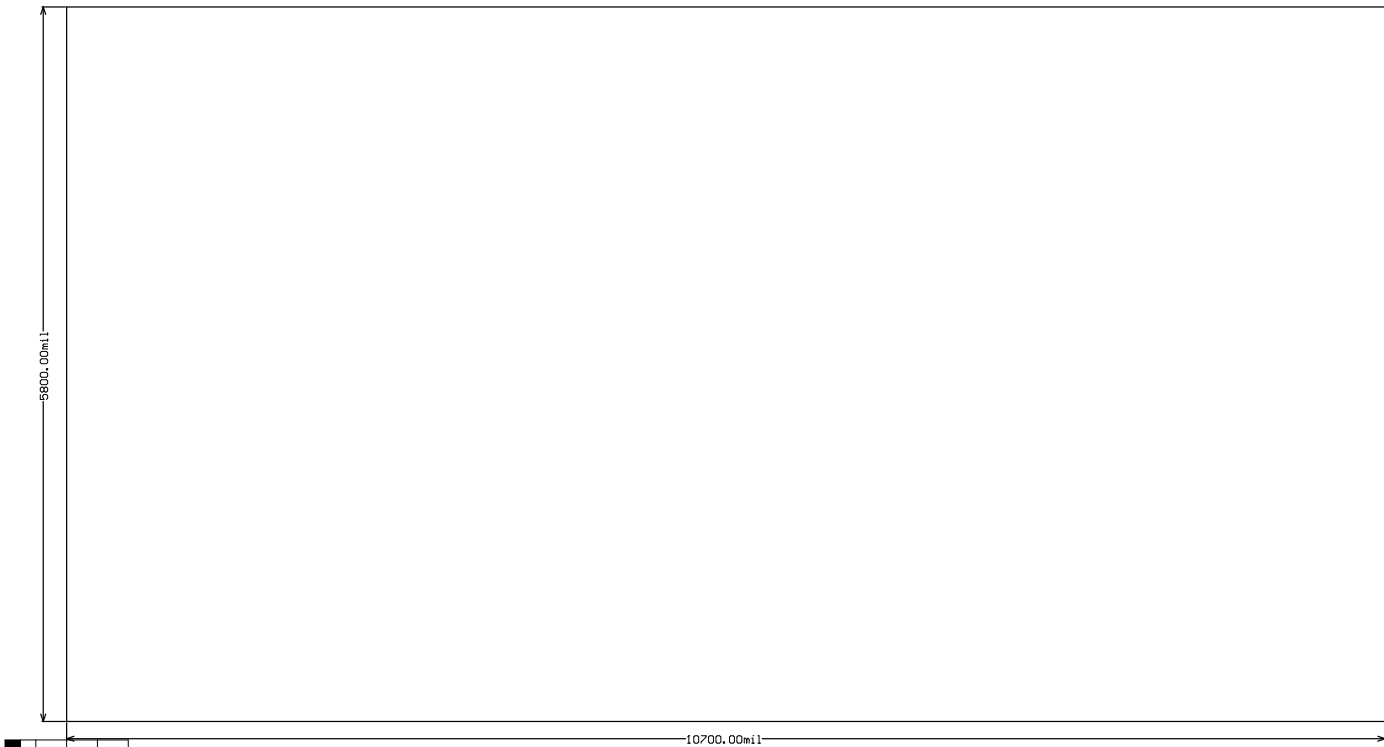
ALL ARTWORK VIEWED FROM TOP SIDE	BOARD #: PMP21495	REV: B	SVN REV: Not In VersionControl
LAYER NAME = Bottom Overlay	TID #: TIDM-02002		
PLOT NAME = Bottom Overlay	GENERATED : 3/6/2019	11:54:56 AM	TEXAS INSTRUMENTS

Symbol	Count	Hole Size	Plated	Hole Type	Drill Layer Pair	U/a/Pad	Pad Shape	Template	Description	Hole Tolerance (+)	Hole Tolerance (-)	Hole Length	Routed Path Length
∅	2	33.07mil (0.840mm)	PTH	Round	Top Layer - Bottom Layer	Pad	Rounded	c135h04				-	-
∅	2	33.47mil (0.850mm)	PTH	Round	Top Layer - Bottom Layer	Pad	Rounded	c136h05				-	-
∅	2	214.37mil (5.450mm)	PTH	Round	Top Layer - Bottom Layer	Pad	Rounded	c1000h45				-	-
∅	2	218.50mil (5.550mm)	PTH	Round	Top Layer - Bottom Layer	Pad	(Fixed)					-	-
∅	2	265.75mil (6.750mm)	PTH	Round	Top Layer - Bottom Layer	Pad	Rounded	c1012h75				-	-
C	4	30.00mil (0.762mm)	PTH	Round	Top Layer - Bottom Layer	Pad	Rounded	c152h76				-	-
*	4	50.00mil (1.270mm)	NPTH	Round	Top Layer - Bottom Layer	Pad	Rounded	c39n127h90				-	-
∅	4	125.98mil (3.200mm)	PTH	Round	Top Layer - Bottom Layer	Pad	Rounded	c600h320				-	-
∅	8	40.95mil (1.040mm)	PTH	Round	Top Layer - Bottom Layer	Pad	(Fixed)					-	-
∅	8	47.24mil (1.200mm)	PTH	Slot	Top Layer - Bottom Layer	Pad	Rounded	r180_379h120_250r100			98.43mil (2.500mm)	51.18mil (1.300mm)	
X	8	86.61mil (2.200mm)	PTH	Round	Top Layer - Bottom Layer	Pad	(Fixed)					-	-
∅	9	40.00mil (1.016mm)	PTH	Round	Top Layer - Bottom Layer	Pad	Rounded	c203h102				-	-
∅	10	95.12mil (2.419mm)	PTH	Round	Top Layer - Bottom Layer	Pad	(Fixed)					-	-
∅	13	43.35mil (1.100mm)	PTH	Round	Top Layer - Bottom Layer	Pad	(Fixed)					-	-
X	16	75.00mil (1.905mm)	PTH	Round	Top Layer - Bottom Layer	Pad	Rounded	c249h150				-	-
∅	30	35.43mil (0.900mm)	PTH	Round	Top Layer - Bottom Layer	Pad	(Fixed)		3.15mil (0.080mm)	3.15mil (0.080mm)		-	-
∅	32	66.89mil (1.700mm)	PTH	Round	Top Layer - Bottom Layer	Pad	(Fixed)					-	-
□	36P	10.00mil (0.254mm)	PTH	Round	Top Layer - Bottom Layer	Via	Rounded	v51h25				-	-
523 Total													

Slot definitions : Routed Path Length = Calculated from tool start centre position to tool end centre position.  
Hole Length = Routed Path Length \* Tool Size = Slot length as defined in the PCB layout



ALL ARTWORK VIEWED FROM TOP SIDE	BOARD #: PMP21495	REV: B	SVN REV: Not In VersionControl
LAYER NAME = Drill Drawing	TID #: TIDM-02002		
PLOT NAME = Drill Drawing	GENERATED : 3/6/2019	11:54:58 AM	TEXAS INSTRUMENTS



ALL ARTWORK VIEWED FROM TOP SIDE	BOARD #: PMP21495	REV: B	SVN REV: Not In VersionControl
LAYER NAME = M2 Board Dimensions	TID #: TIDM-02002		
PLOT NAME = Board Dimensions	GENERATED : 3/6/2019	11:58:00 AM	TEXAS INSTRUMENTS

## IMPORTANT NOTICE AND DISCLAIMER

TI PROVIDES TECHNICAL AND RELIABILITY DATA (INCLUDING DATASHEETS), DESIGN RESOURCES (INCLUDING REFERENCE DESIGNS), APPLICATION OR OTHER DESIGN ADVICE, WEB TOOLS, SAFETY INFORMATION, AND OTHER RESOURCES "AS IS" AND WITH ALL FAULTS, AND DISCLAIMS ALL WARRANTIES, EXPRESS AND IMPLIED, INCLUDING WITHOUT LIMITATION ANY IMPLIED WARRANTIES OF MERCHANTABILITY, FITNESS FOR A PARTICULAR PURPOSE OR NON-INFRINGEMENT OF THIRD PARTY INTELLECTUAL PROPERTY RIGHTS.

These resources are intended for skilled developers designing with TI products. You are solely responsible for (1) selecting the appropriate TI products for your application, (2) designing, validating and testing your application, and (3) ensuring your application meets applicable standards, and any other safety, security, or other requirements. These resources are subject to change without notice. TI grants you permission to use these resources only for development of an application that uses the TI products described in the resource. Other reproduction and display of these resources is prohibited. No license is granted to any other TI intellectual property right or to any third party intellectual property right. TI disclaims responsibility for, and you will fully indemnify TI and its representatives against, any claims, damages, costs, losses, and liabilities arising out of your use of these resources.

TI's products are provided subject to TI's Terms of Sale ([www.ti.com/legal/termsofsale.html](http://www.ti.com/legal/termsofsale.html)) or other applicable terms available either on [ti.com](http://ti.com) or provided in conjunction with such TI products. TI's provision of these resources does not expand or otherwise alter TI's applicable warranties or warranty disclaimers for TI products.

Mailing Address: Texas Instruments, Post Office Box 655303, Dallas, Texas 75265  
Copyright © 2019, Texas Instruments Incorporated