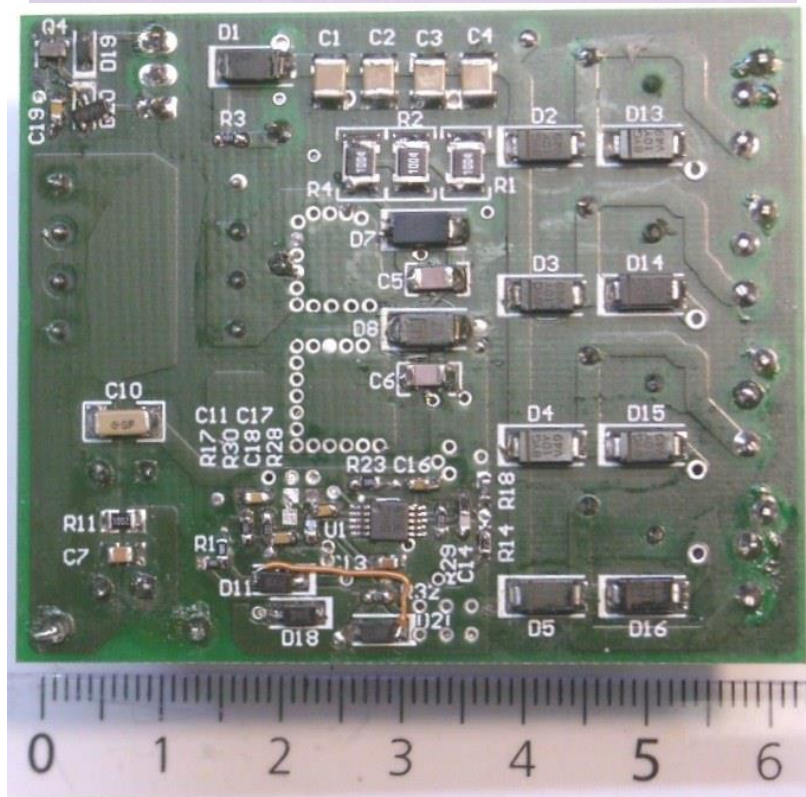
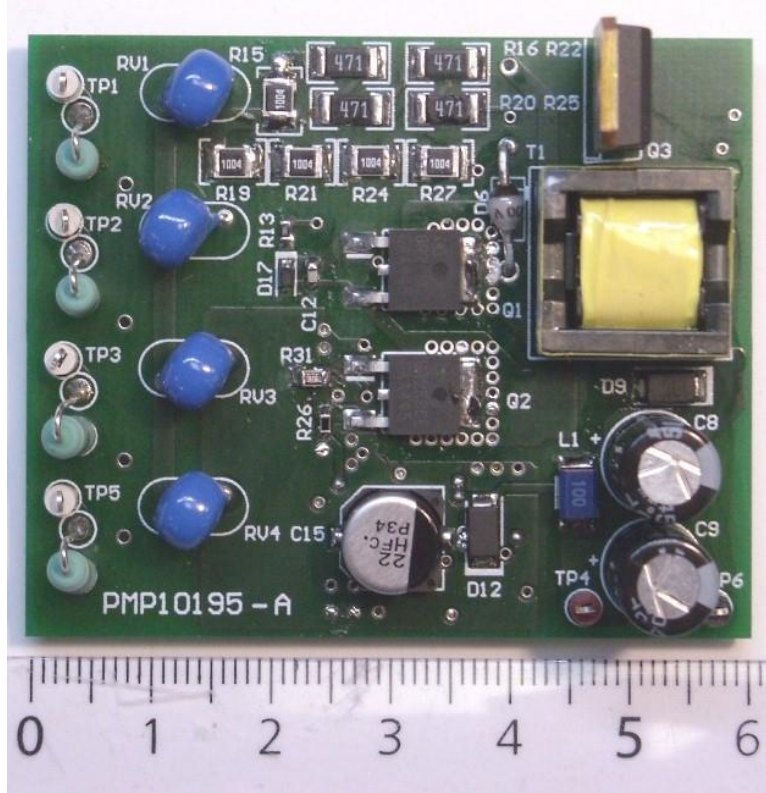


### 1 Photo of the Prototype:



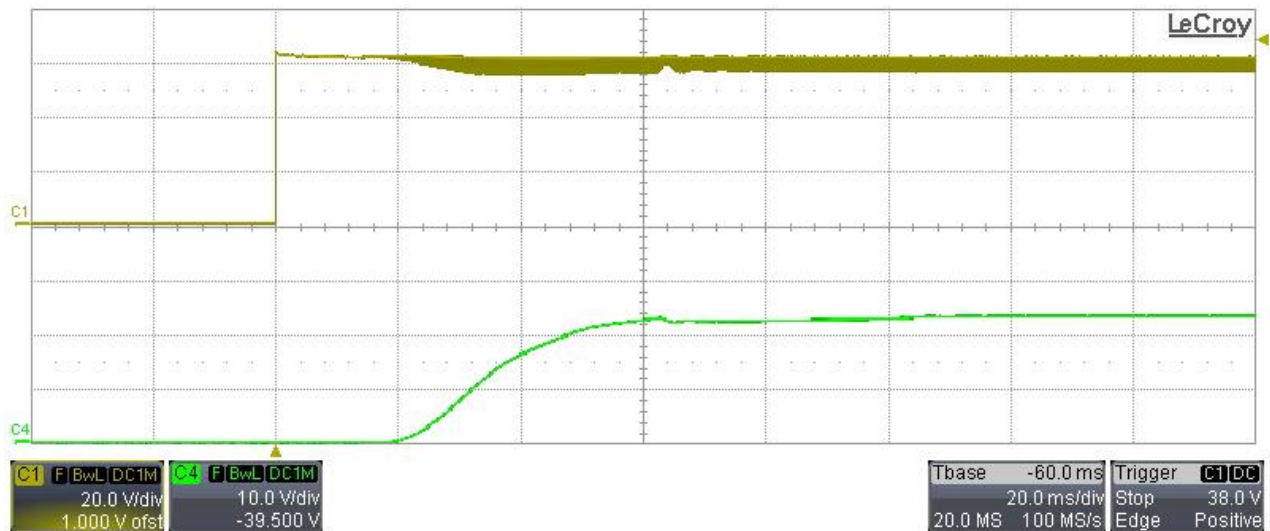
## 2 Startup

The output voltage behavior, for different input voltages, is shown in the images below. The input voltage was set respectively to 65Vdc, 320Vdc as well as 56Vac @ full load.

**Ch.1: Input Voltage (20V/div, 20ms/div, 20MHz BWL)**

**Ch.4: Output Voltage (10V/div, 20MHz BWL)**

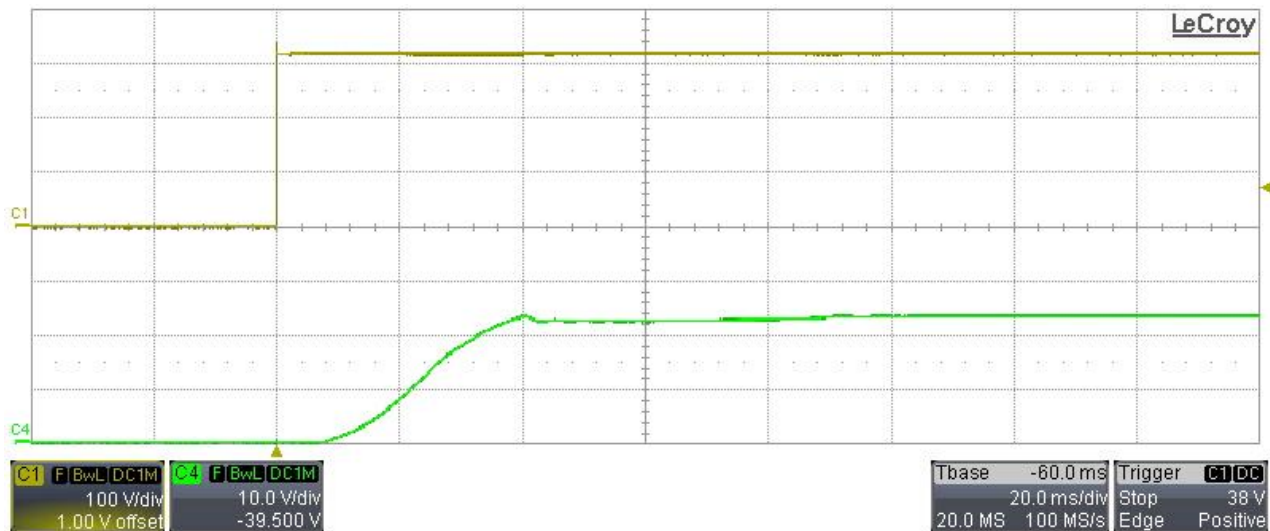
**Vin = 65Vdc**



**Ch.1: Input Voltage (100V/div, 20ms/div, 20MHz BWL)**

**Ch.4: Output Voltage (10V/div, 20MHz BWL)**

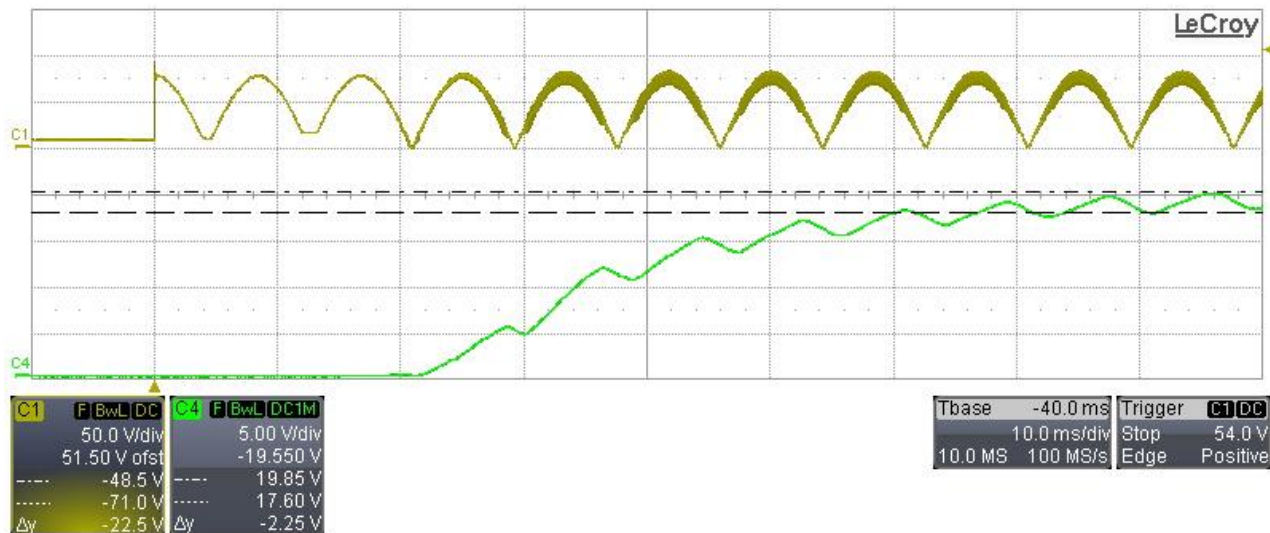
**Vin = 320Vdc**



Ch.1: Input Voltage (50V/div, 10ms/div, 20MHz BWL)

Ch.4: Output Voltage (5V/div, 20MHz BWL)

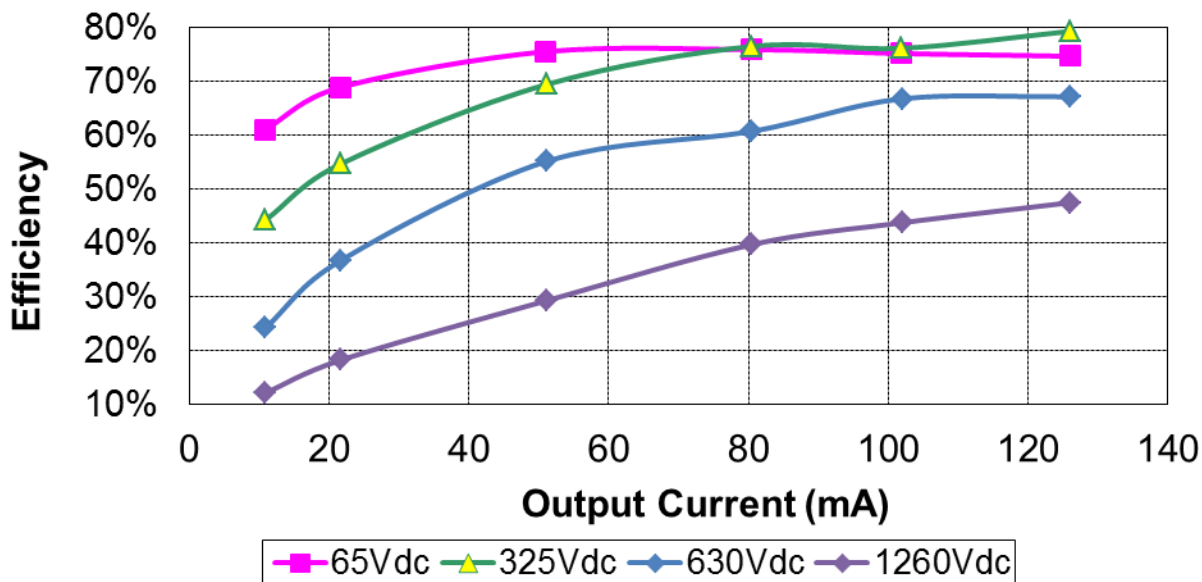
Vin = 56Vac



### 3 Efficiency

The efficiency data are shown in the tables and graph below.

The input voltage has been set to DC peak value of 46Vac, 230Vac, 445Vac and 891Vac, respectively equivalent to 65Vdc, 325Vdc, 630Vdc and 1260Vdc. The output has been loaded from 0 to full load.



| Vin (Vdc) | Iin (mA) | Vout (V) | Iout (mA) | Pout (W) | Pin (W) | Eff. (%) |
|-----------|----------|----------|-----------|----------|---------|----------|
| 65        | 2.06     | 25.86    | 0.0       | 0.00     | 0.13    | 0.0%     |
| 65        | 6.71     | 24.63    | 10.8      | 0.27     | 0.44    | 61.0%    |
| 65        | 11.69    | 24.23    | 21.6      | 0.52     | 0.76    | 68.9%    |
| 65        | 24.67    | 23.75    | 51.0      | 1.21     | 1.60    | 75.5%    |
| 65        | 38.34    | 23.50    | 80.5      | 1.89     | 2.49    | 75.9%    |
| 65        | 48.7     | 23.36    | 101.9     | 2.38     | 3.17    | 75.2%    |
| 65        | 60.3     | 23.23    | 126.0     | 2.93     | 3.92    | 74.7%    |

| Vin (Vdc) | Iin (mA) | Vout (V) | Iout (mA) | Pout (W) | Pin (W) | Eff. (%) |
|-----------|----------|----------|-----------|----------|---------|----------|
| 325       | 1.08     | 25.80    | 0.0       | 0.00     | 0.35    | 0.0%     |
| 325       | 1.87     | 24.64    | 10.9      | 0.27     | 0.61    | 44.2%    |
| 325       | 2.96     | 24.24    | 21.7      | 0.53     | 0.96    | 54.7%    |
| 325       | 5.38     | 23.76    | 51.1      | 1.21     | 1.75    | 69.4%    |
| 325       | 7.61     | 23.51    | 80.5      | 1.89     | 2.47    | 76.5%    |
| 325       | 9.62     | 23.37    | 101.9     | 2.38     | 3.13    | 76.2%    |
| 325       | 11.36    | 23.23    | 126.1     | 2.93     | 3.69    | 79.3%    |

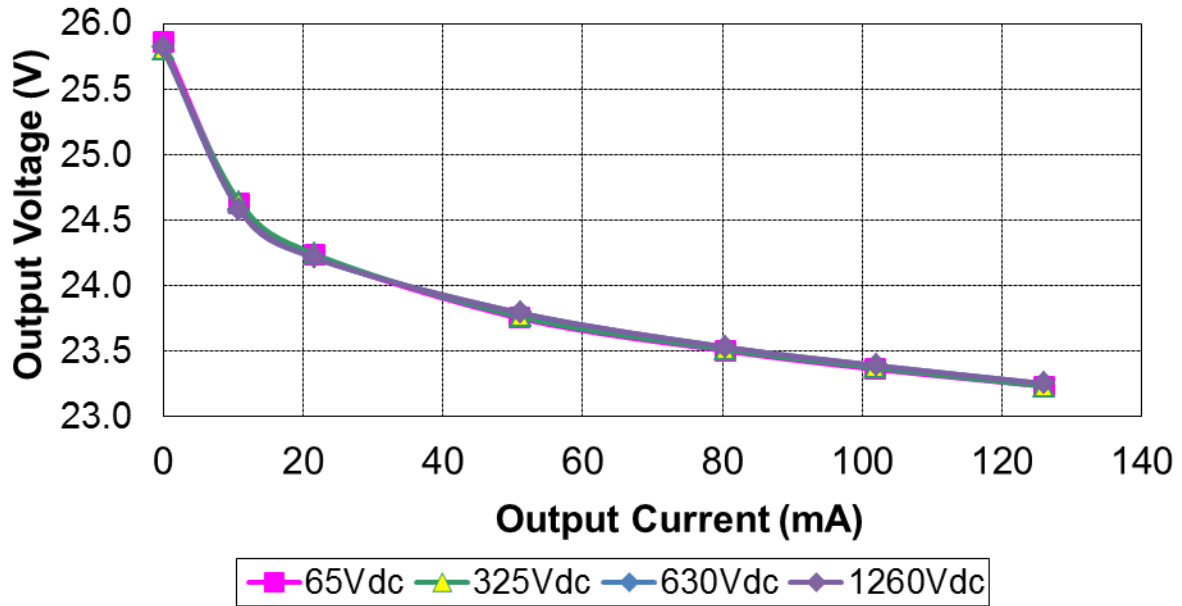
| Vin (Vdc) | Iin (mA) | Vout (V) | Iout (mA) | Pout (W) | Pin (W) | Eff. (%) |
|-----------|----------|----------|-----------|----------|---------|----------|
| 630       | 1.09     | 25.82    | 0.0       | 0.00     | 0.69    | 0.0%     |
| 630       | 1.76     | 24.58    | 10.9      | 0.27     | 1.11    | 24.2%    |
| 630       | 2.27     | 24.21    | 21.7      | 0.53     | 1.43    | 36.7%    |
| 630       | 3.50     | 23.79    | 51.1      | 1.22     | 2.21    | 55.1%    |
| 630       | 4.95     | 23.53    | 80.5      | 1.89     | 3.12    | 60.7%    |
| 630       | 5.67     | 23.39    | 102.0     | 2.39     | 3.57    | 66.8%    |
| 630       | 6.93     | 23.25    | 126.1     | 2.93     | 4.37    | 67.2%    |

| Vin (Vdc) | Iin (mA) | Vout (V) | Iout (mA) | Pout (W) | Pin (W) | Eff. (%) |
|-----------|----------|----------|-----------|----------|---------|----------|
| 1260      | 0.774    | 25.82    | 0.0       | 0.00     | 0.98    | 0.0%     |
| 1260      | 1.76     | 24.58    | 10.9      | 0.27     | 2.22    | 12.1%    |
| 1260      | 2.29     | 24.21    | 21.7      | 0.53     | 2.89    | 18.2%    |
| 1260      | 3.30     | 23.79    | 51.1      | 1.22     | 4.16    | 29.2%    |
| 1260      | 3.79     | 23.53    | 80.5      | 1.89     | 4.78    | 39.7%    |
| 1260      | 4.33     | 23.39    | 102.0     | 2.39     | 5.46    | 43.7%    |
| 1260      | 4.90     | 23.25    | 126.1     | 2.93     | 6.17    | 47.5%    |



### 4 Output Voltage Regulation

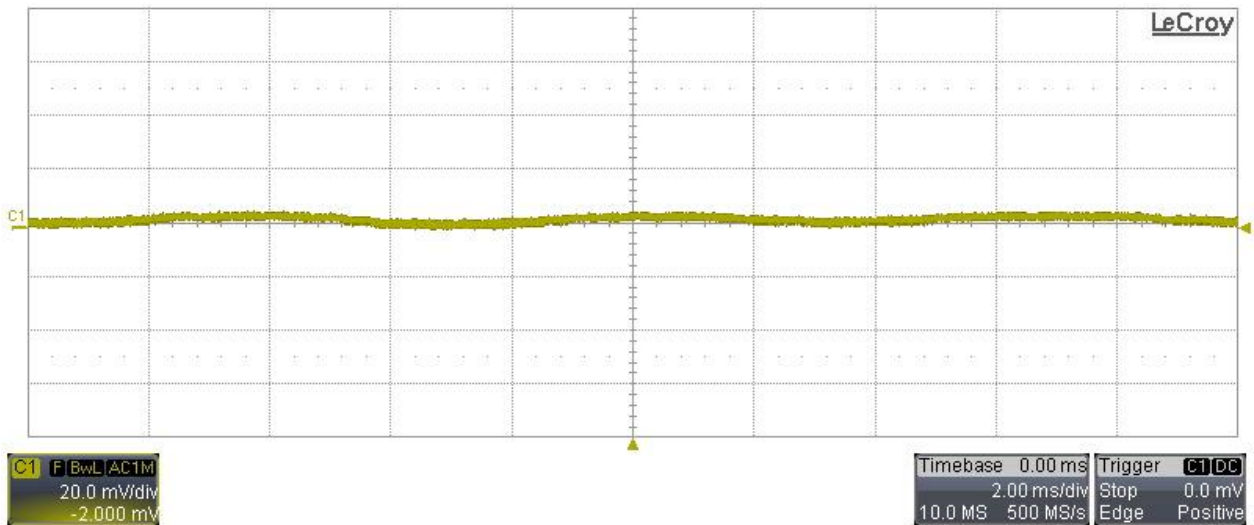
The output voltage variation versus load current is plotted below. The voltage variation was within +/-3% by connecting a minimum load of 10mA.



### 5 Output Ripple Voltage

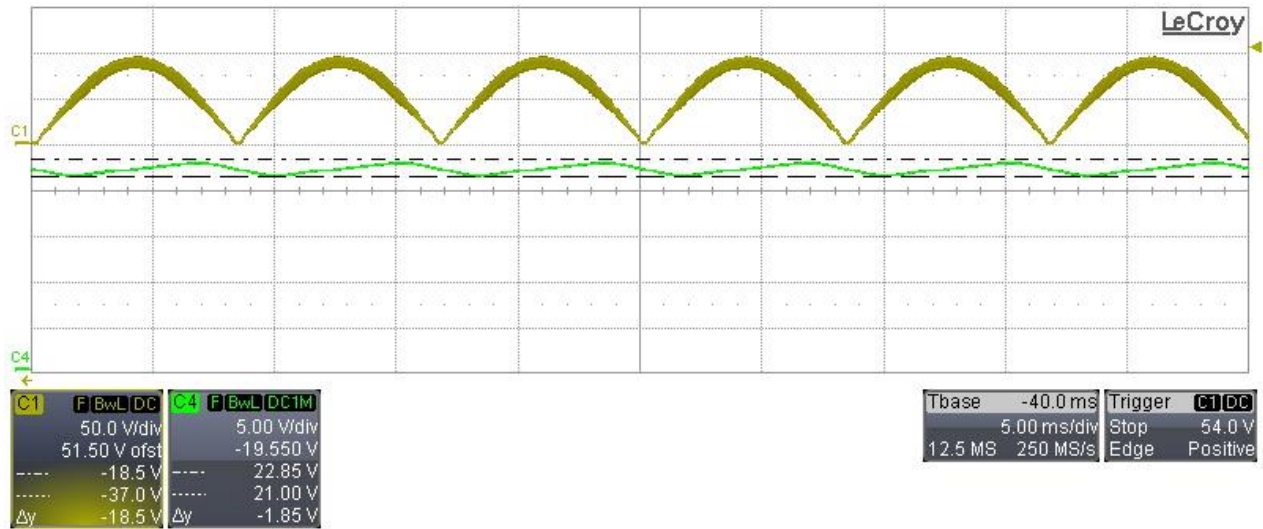
The output ripple voltage has been measured by supplying the converter @ 325Vdc, 65Vac (60Hz) and 230Vac (50Hz) while the converter was fully loaded.

Ch.1: Output Voltage (20mV/div, 2ms/div., AC coupling), Vin = 325Vdc



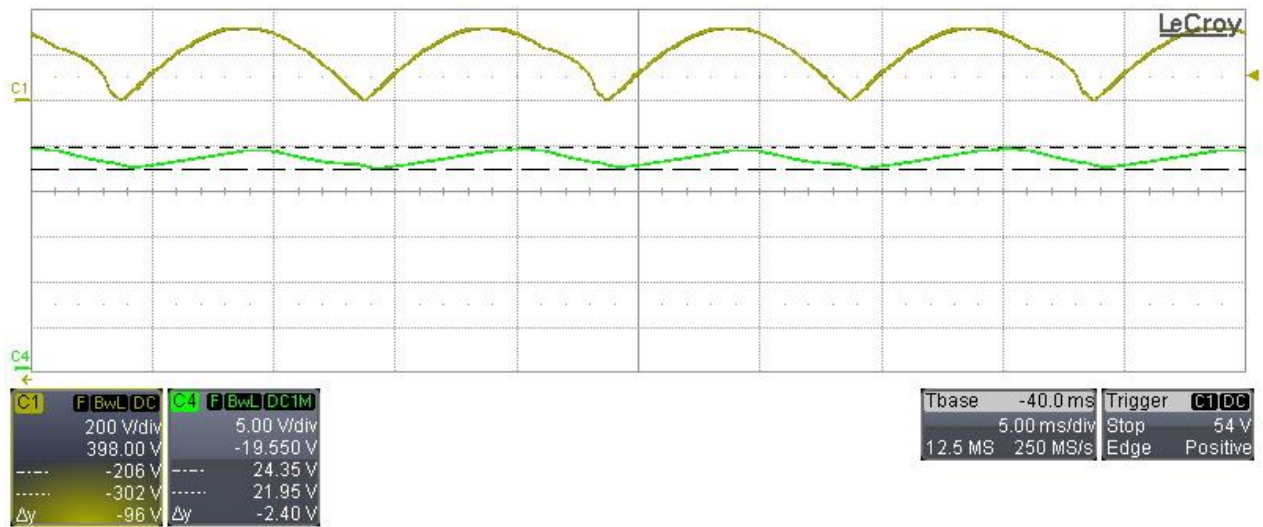
**Ch.1: Input Voltage (50V/div, 5ms/div., DC coupling),  $V_{in} = 65V_{ac}$ , 60Hz**

**Ch.4: Output Voltage (5V/div, DC coupling)**



**Ch.1: Input Voltage (200V/div, 5ms/div., DC coupling),  $V_{in} = 230V_{ac}$ , 50Hz**

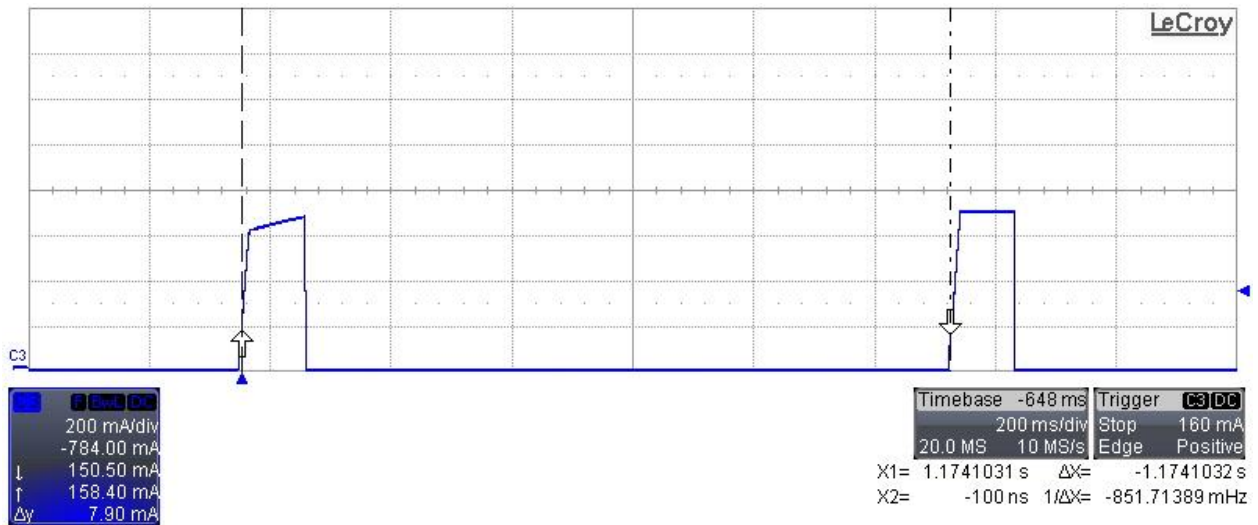
**Ch.4: Output Voltage (5V/div, DC coupling)**



## 6 Short Circuit Test

The image below shows the output current behavior by applying a short circuit on output terminals; the input voltage was 135Vdc.

**Ch.3: Output Current (200mA/div, 200ms/div. DC coupling, 20MHz BWL)**

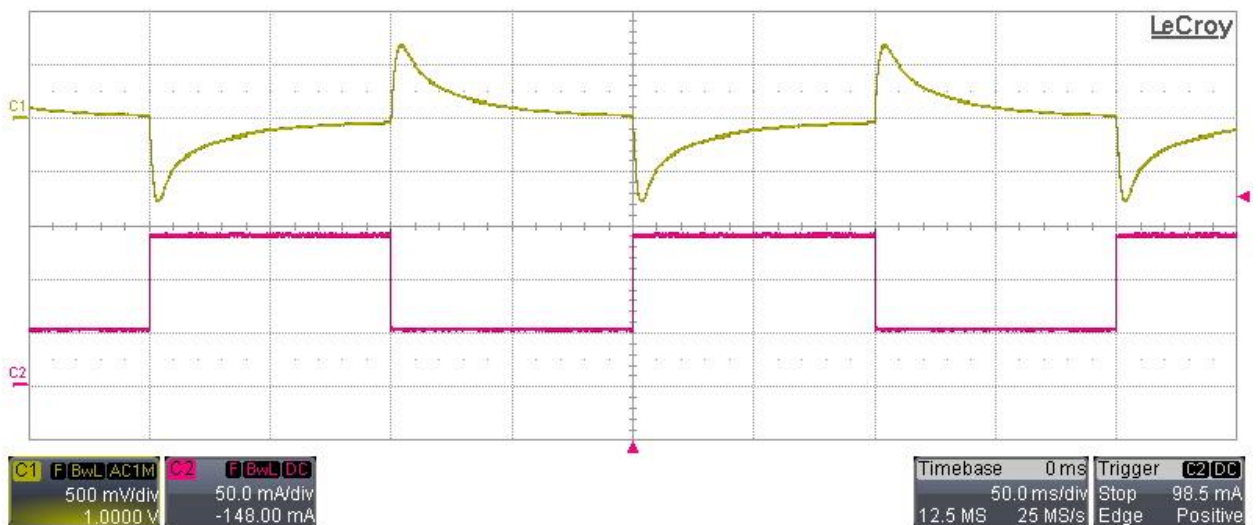


## 7 Transient Load Behavior

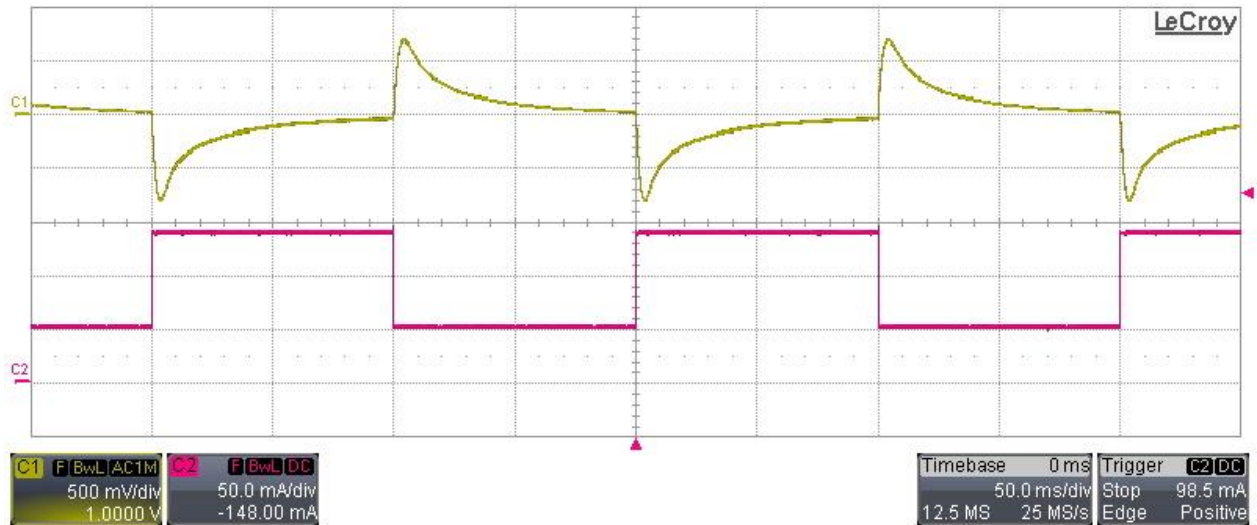
The converter has been supplied at 65Vdc and 325Vdc and the load switched between 50mA and 130mA. The images below show the voltage drop during the transients.

**Ch.1: Output Voltage (500mV/div, 50ms/div., AC coupling, 20MHz BWL), Vin = 65Vdc**

**Ch.2: Output Current (50mA/div, DC coupling, 20MHz BWL)**



**Ch.1: Output Voltage (500mV/div, 50ms/div., AC coupling, 20MHz BWL),  $V_{in} = 325V_{dc}$**   
**Ch.2: Output Current (50mA/div, DC coupling, 20MHz BWL)**



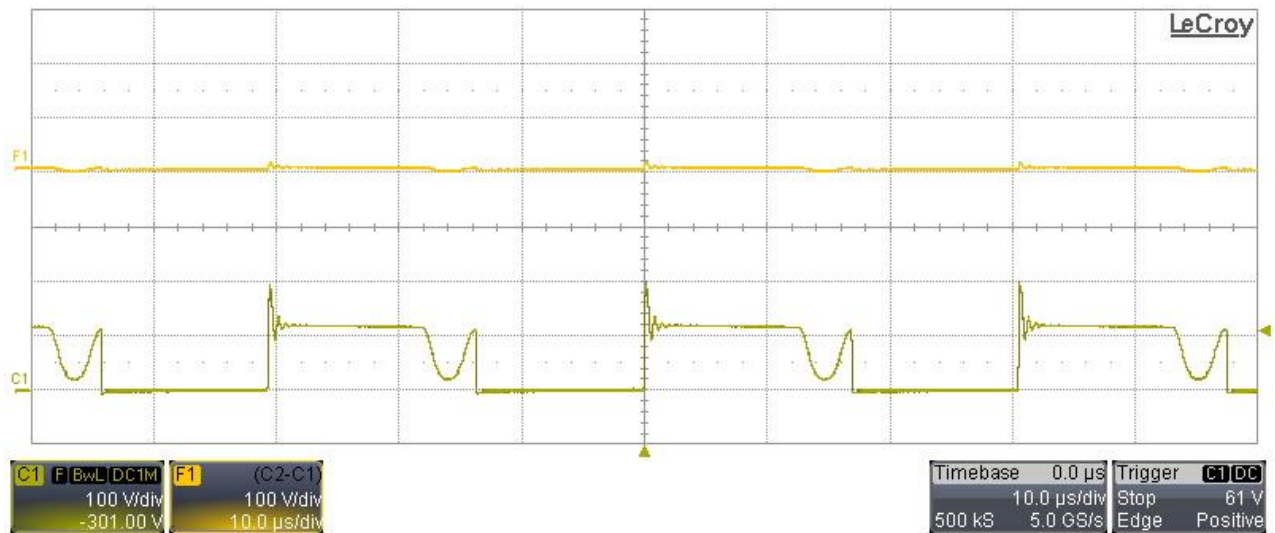
### 8 Switch node

The images below show the  $V_{DS}$  voltage of Q1 and Q2, taken respectively at 65Vdc, 325Vdc, 630Vdc and 1260Vdc while the output was fully loaded.

**Ch.C1:  $V_{DS}$  Voltage of Q2 (100V/div, 10us/div, DC coupling, 200MHz BWL)**

**Ch.F1:  $V_{DS}$  Voltage of Q1 (100V/div, 10us/div, DC coupling, 200MHz BWL)**

**$V_{in} = 65V_{dc}$**

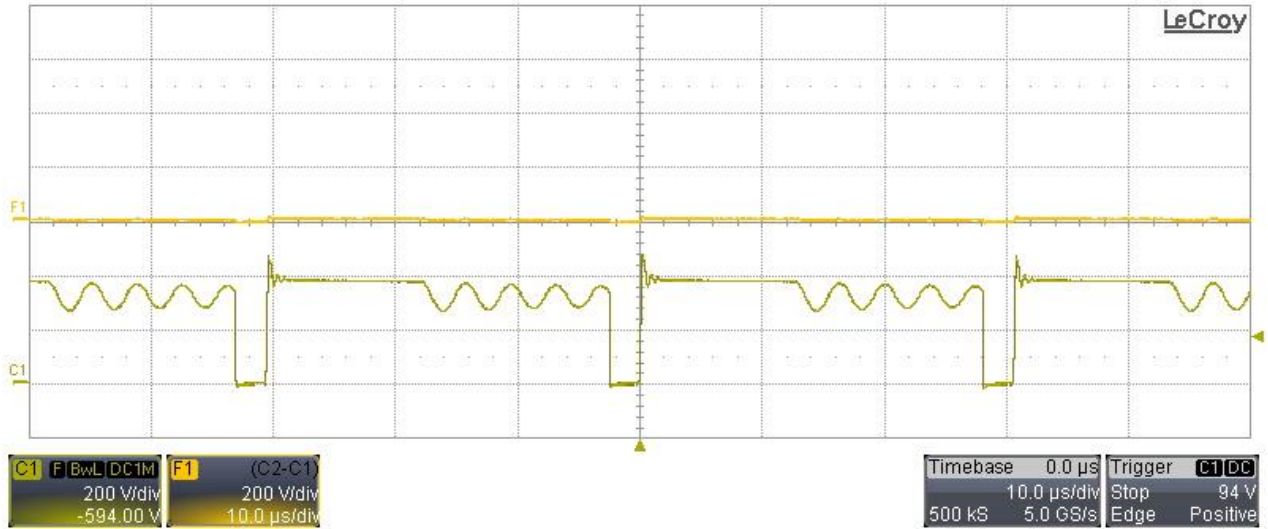




Ch.C1:  $V_{DS}$  Voltage of Q2 (200V/div, 10us/div, DC coupling, 200MHz BWL)

Ch.F1:  $V_{DS}$  Voltage of Q1 (200V/div, 10us/div, DC coupling, 200MHz BWL)

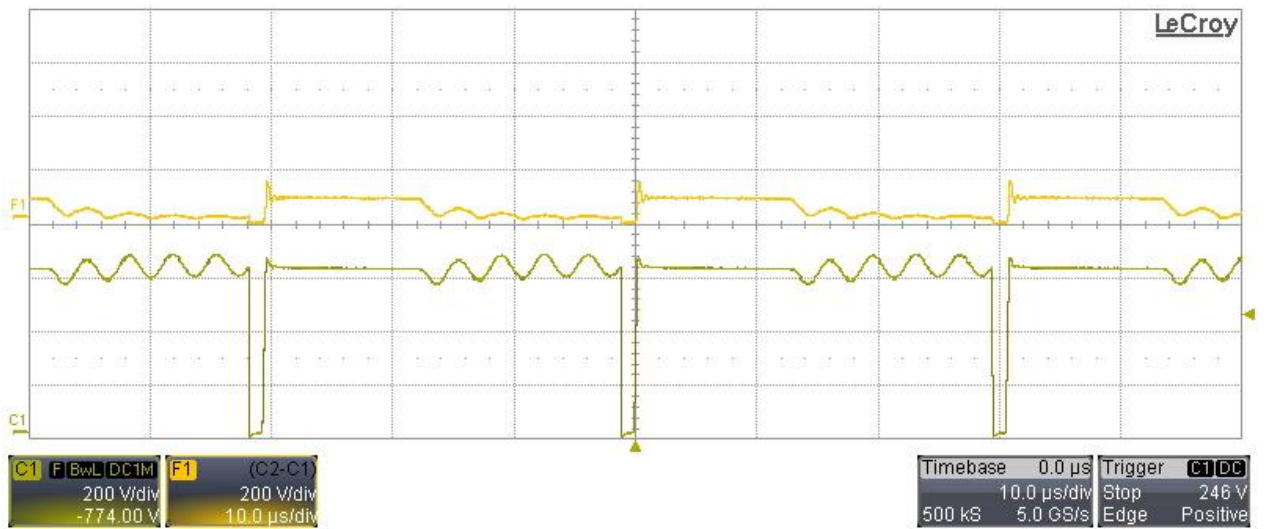
$V_{in} = 325V_{dc}$



Ch.C1:  $V_{DS}$  Voltage of Q2 (200V/div, 10us/div, DC coupling, 200MHz BWL)

Ch.F1:  $V_{DS}$  Voltage of Q1 (200V/div, 10us/div, DC coupling, 200MHz BWL)

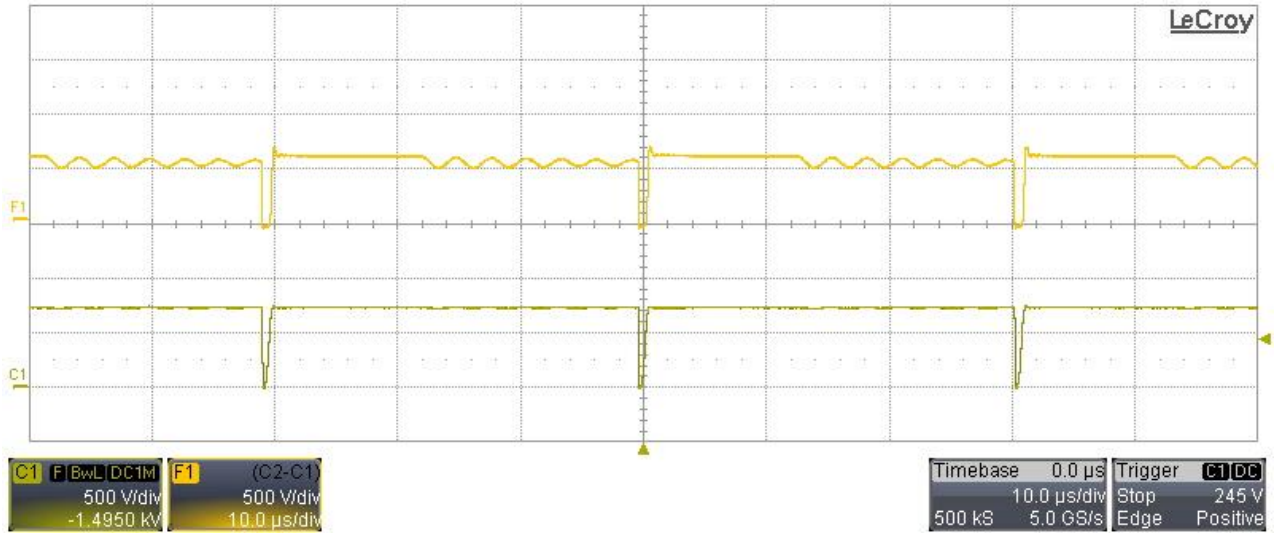
$V_{in} = 630V_{dc}$



Ch.C1:  $V_{DS}$  Voltage of Q2 (500V/div, 10us/div, DC coupling, 200MHz BWL)

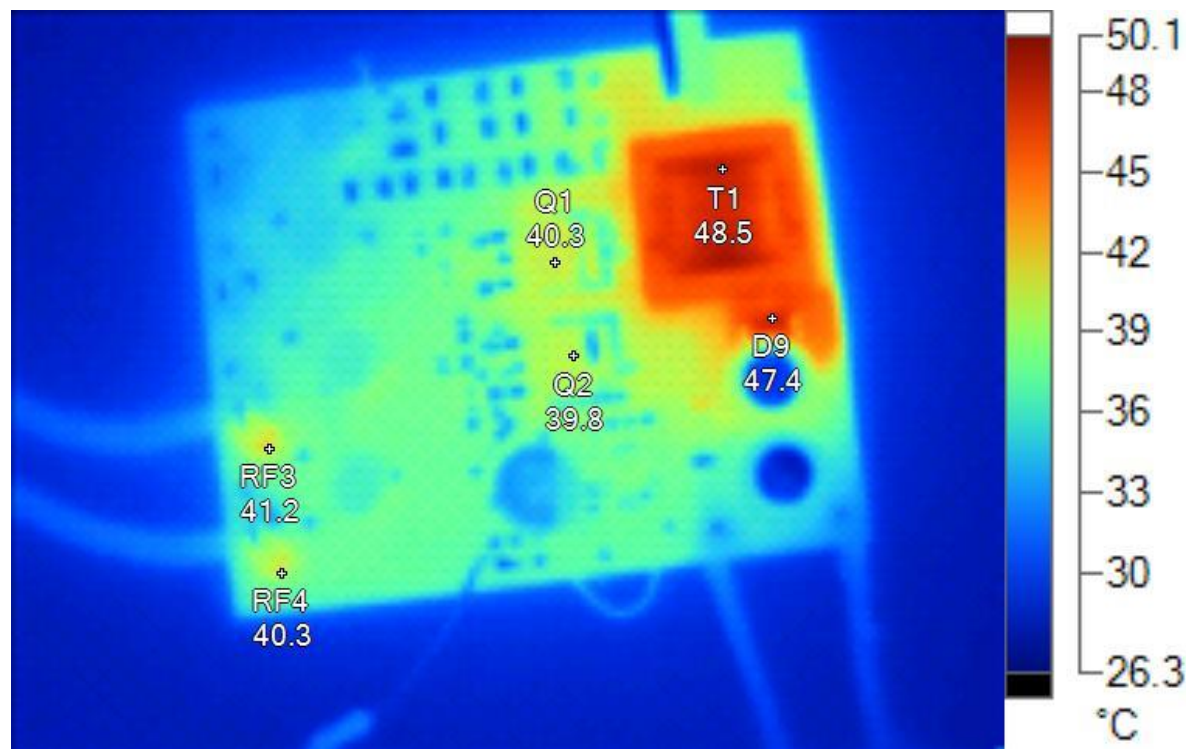
Ch.F1:  $V_{DS}$  Voltage of Q1 (500V/div, 10us/div, DC coupling, 200MHz BWL)

$V_{in} = 1260V_{dc}$



## 9 Thermal Report

The images below show thermal shots of the board, taken respectively at 65Vdc, 630Vdc and 1260Vdc input voltage while the load was 125mA. The board has been placed horizontally on the bench in still air conditions and the air temperature was 23° Celsius.



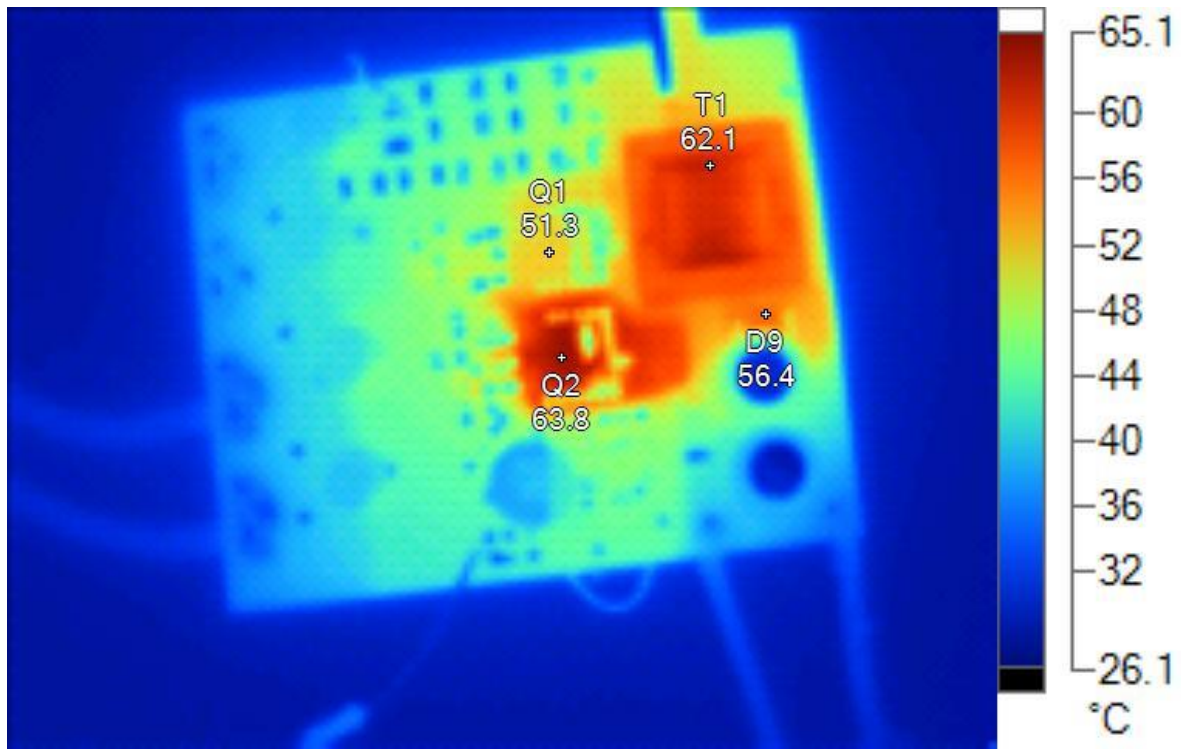
**Vin = 65Vdc**

### Image Info

|                        |                       |
|------------------------|-----------------------|
| Background temperature | 23°C                  |
| Average Temperature    | 32.9°C                |
| Image Range            | 27.3°C to 49.1°C      |
| Camera Model           | Ti40FT                |
| Camera Manufacturer    | Fluke                 |
| Image Time             | 10/19/2015 3:39:17 PM |

### Main Image Markers

| Name | Temperature |
|------|-------------|
| T1   | 48.5°C      |
| D9   | 47.4°C      |
| Q2   | 39.8°C      |
| Q1   | 40.3°C      |
| RF3  | 41.2°C      |
| RF4  | 40.3°C      |



**Vin = 630Vdc**

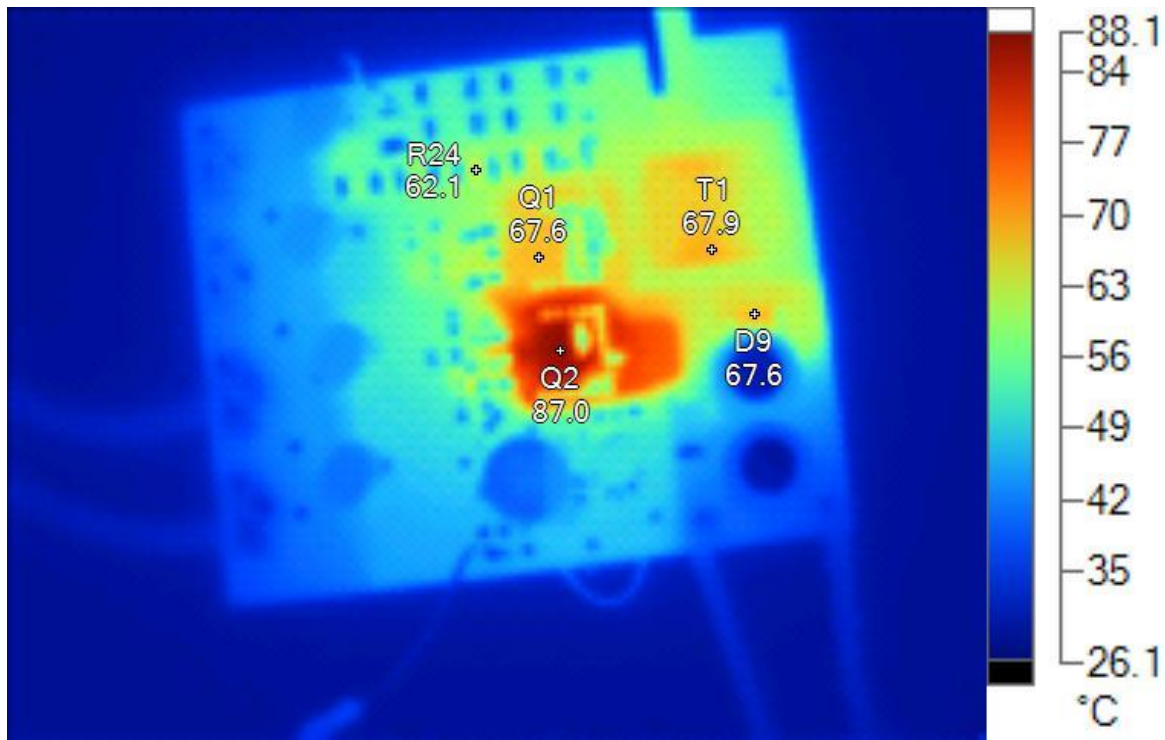
**Image Info**

|                        |                       |
|------------------------|-----------------------|
| Background temperature | 23°C                  |
| Average Temperature    | 36.1°C                |
| Image Range            | 27.1°C to 64.0°C      |
| Camera Model           | Ti40FT                |
| Camera Manufacturer    | Fluke                 |
| Image Time             | 10/19/2015 3:34:27 PM |

**Main Image Markers**

| Name | Temperature |
|------|-------------|
| T1   | 62.1°C      |
| Q2   | 63.8°C      |
| Q1   | 51.3°C      |
| D9   | 56.4°C      |





**Vin = 1260Vdc**

**Image Info**

|                        |                       |
|------------------------|-----------------------|
| Background temperature | 23°C                  |
| Average Temperature    | 38.7°C                |
| Image Range            | 27.1°C to 87.3°C      |
| Camera Model           | Ti40FT                |
| Camera Manufacturer    | Fluke                 |
| Image Time             | 10/19/2015 3:31:53 PM |

**Main Image Markers**

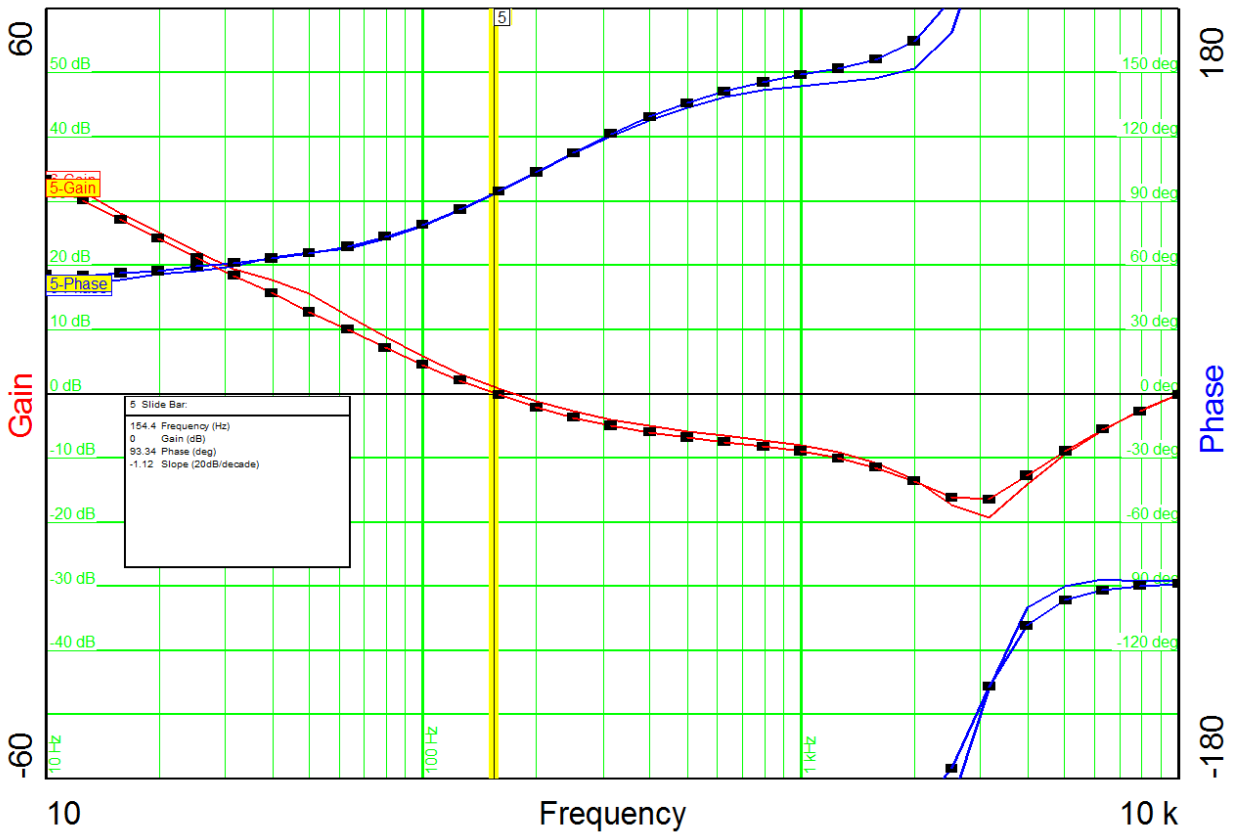
| Name | Temperature |
|------|-------------|
| T1   | 67.9°C      |
| Q2   | 87.0°C      |
| Q1   | 67.6°C      |
| R24  | 62.1°C      |
| D9   | 67.6°C      |

### 10 Loop Analysis

The picture below shows the loop gain and phase of the power supply. A 50 Ohm resistor has been placed in series to R17 in order to measure the open loop transfer function. The input voltage has been set to 70Vdc and 320Vdc and the load was 125mA.

Worst case condition:

- Vin: 70Vdc
- Crossover frequency: 154.4 Hz
- Phase margin: 93.34 deg.



## IMPORTANT NOTICE AND DISCLAIMER

TI PROVIDES TECHNICAL AND RELIABILITY DATA (INCLUDING DATASHEETS), DESIGN RESOURCES (INCLUDING REFERENCE DESIGNS), APPLICATION OR OTHER DESIGN ADVICE, WEB TOOLS, SAFETY INFORMATION, AND OTHER RESOURCES "AS IS" AND WITH ALL FAULTS, AND DISCLAIMS ALL WARRANTIES, EXPRESS AND IMPLIED, INCLUDING WITHOUT LIMITATION ANY IMPLIED WARRANTIES OF MERCHANTABILITY, FITNESS FOR A PARTICULAR PURPOSE OR NON-INFRINGEMENT OF THIRD PARTY INTELLECTUAL PROPERTY RIGHTS.

These resources are intended for skilled developers designing with TI products. You are solely responsible for (1) selecting the appropriate TI products for your application, (2) designing, validating and testing your application, and (3) ensuring your application meets applicable standards, and any other safety, security, or other requirements. These resources are subject to change without notice. TI grants you permission to use these resources only for development of an application that uses the TI products described in the resource. Other reproduction and display of these resources is prohibited. No license is granted to any other TI intellectual property right or to any third party intellectual property right. TI disclaims responsibility for, and you will fully indemnify TI and its representatives against, any claims, damages, costs, losses, and liabilities arising out of your use of these resources.

TI's products are provided subject to TI's Terms of Sale (<https://www.ti.com/legal/termsofsale.html>) or other applicable terms available either on [ti.com](https://www.ti.com) or provided in conjunction with such TI products. TI's provision of these resources does not expand or otherwise alter TI's applicable warranties or warranty disclaimers for TI products.

Mailing Address: Texas Instruments, Post Office Box 655303, Dallas, Texas 75265  
Copyright © 2021, Texas Instruments Incorporated