

SafeTI™ Hercules™ Diagnostic Library - TAU

This document serves as the Installation Guide for the SafeTI-Hercules Diagnostic Library-TAU that contains the items:

- SafeTI-Hercules Diagnostic Library CSP Documents and Reports
- SafeTI-Hercules Diagnostic Library Test Automation unit (SafeTI Hercules Diagnostic library TAU)

Contents

1	Software Prerequisite	1
2	Steps to Install SafeTI-Hercules Diagnostic Library -TAU.....	2
3	Setting Up LDRA Unit	3

List of Figures

1	Install Components	2
2	Select Compiler	3
3	Coverage Selection.....	4
4	Source Code Browser Selection.....	4
5	TI Code Composer Installation Directory	5
6	Project Configuration	5
7	License Configuration Manager.....	6
8	License Configuration Manager 9.4.3.....	6
9	Start/Restart FlexLM License Service.....	7

Trademarks

SafeTI, Hercules, Code Composer Studio are trademarks of Texas Instruments. All other trademarks are the property of their respective owners.

1 Software Prerequisite

- OS: Windows XP, Windows 7
- Code Composer Studio™ 5.4 (or higher)
- Microsoft Office 2007 (or higher)
- Perl 5.x. Download Link → <http://www.perl.org/get.html#win32>
- LDRAunit-TI-Qual 9.4.3 (or higher)

NOTE: LDRA Unit is not provided as a part of the CSP download. To re-run the unit tests using the included Test automation unit software, customers are required to purchase and install LDRA Unit software from LDRA. This guide explains LDRA Unit installation settings required for the Test automation unit in [Section 3](#)

2 Steps to Install SafeTI-Hercules Diagnostic Library -TAU

1. Select Installer
Run SafeTI Diagnostic Library-TAU-<device>-xx.yy.zz-installer.exe
2. Choosing Install Components
Select all the visible components (as shown in [Figure 1](#)). Click next to start the installation.

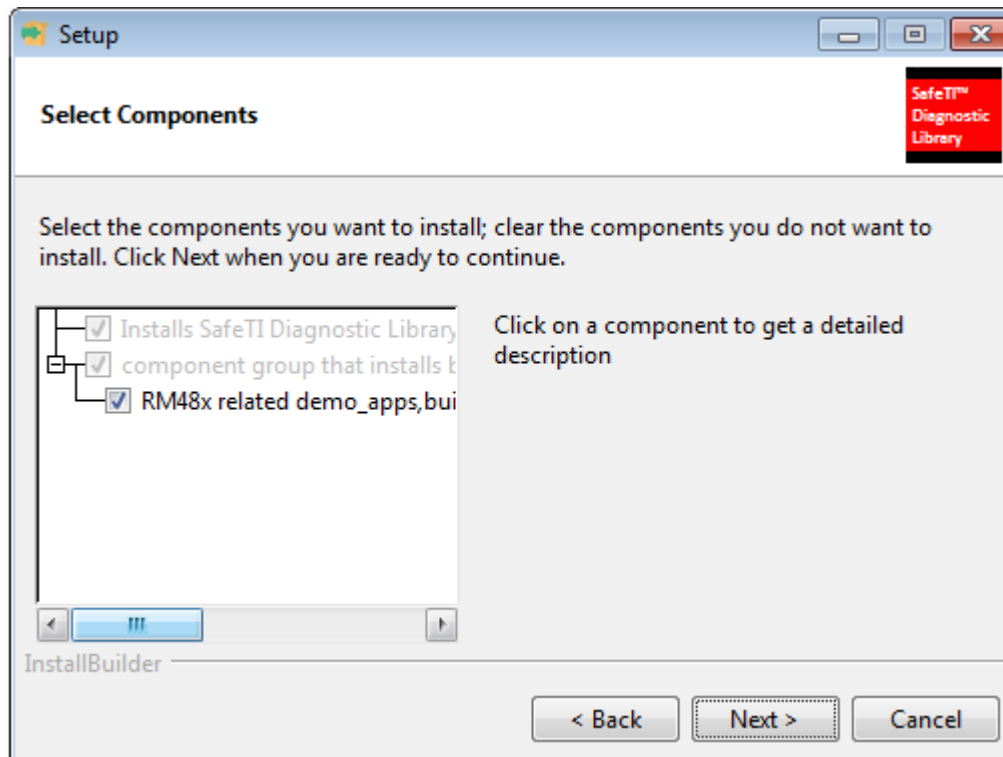


Figure 1. Install Components

3 Setting Up LDRA Unit

1. LDRA Unit – Compiler Selection

Choose Texas Instruments Code Composer v5.0 RM48L950 Hercules Serial (as shown in [Figure 2](#)).

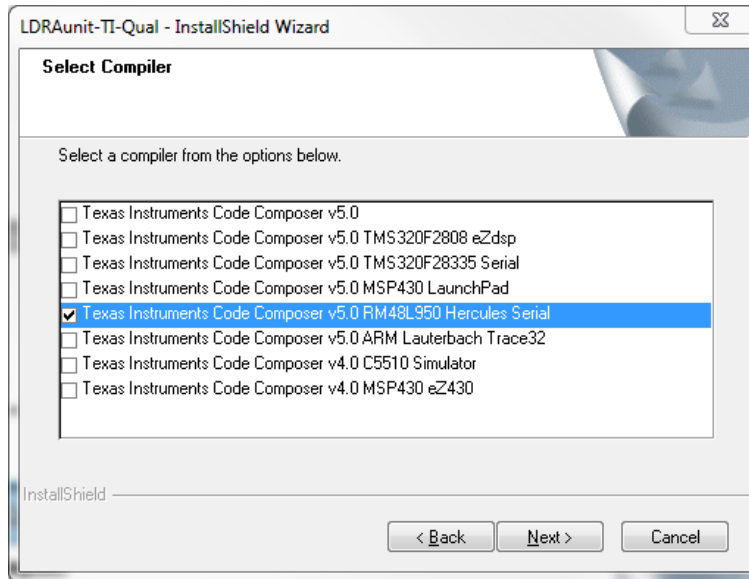


Figure 2. Select Compiler

- LDRA Unit – Coverage Selection
Leave it Default.

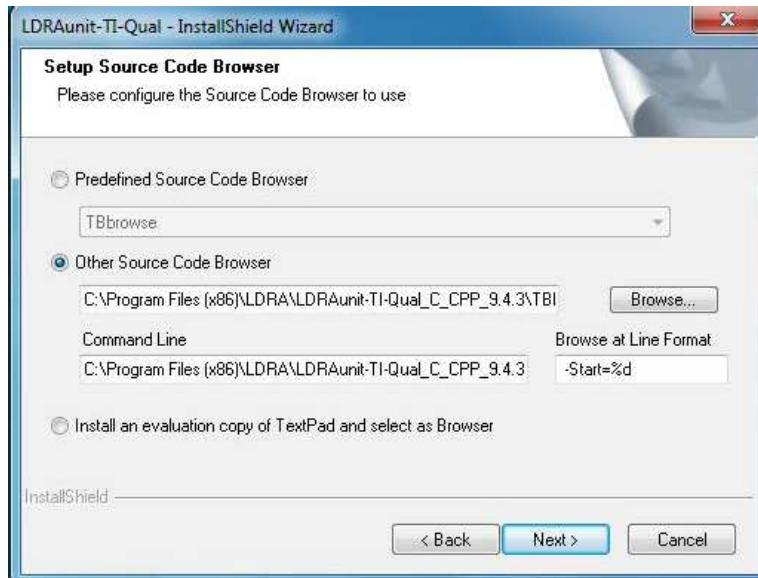


Figure 3. Coverage Selection

- LDRA Unit – Source Code Browser Selection
Leave it Default or Browse to the desired Editor.

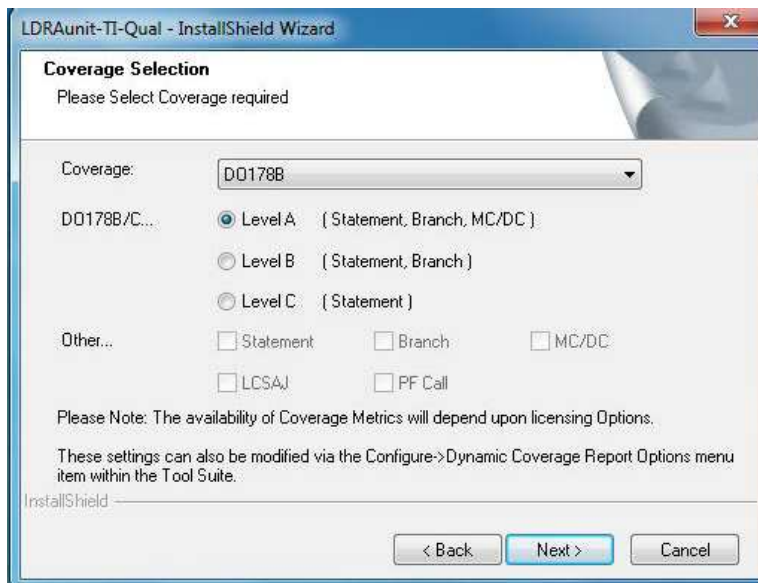


Figure 4. Source Code Browser Selection

4. LDRA Unit – Choose TI CCS Install Path

Default: c:\ti\ccsv5\, browse to the latest TI CCS installation folder CCS5 or CCS6

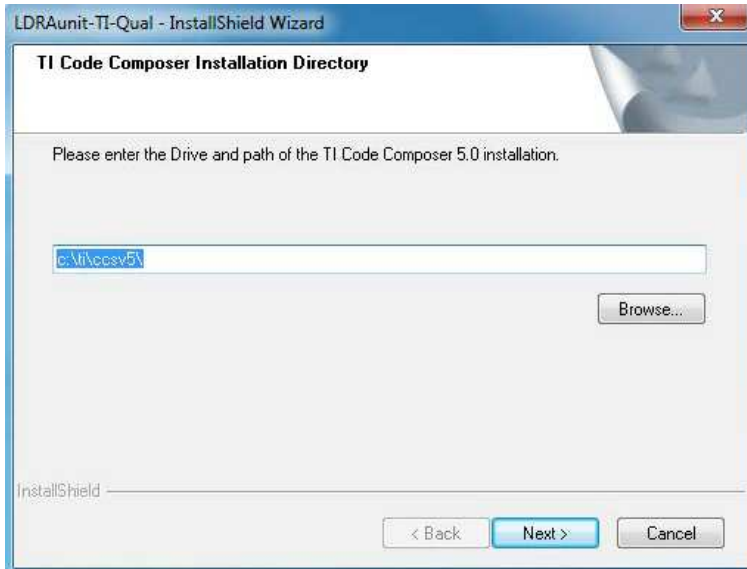


Figure 5. TI Code Composer Installation Directory

5. LDRA Unit – Project Configuration

Leave it Default to LDRA.

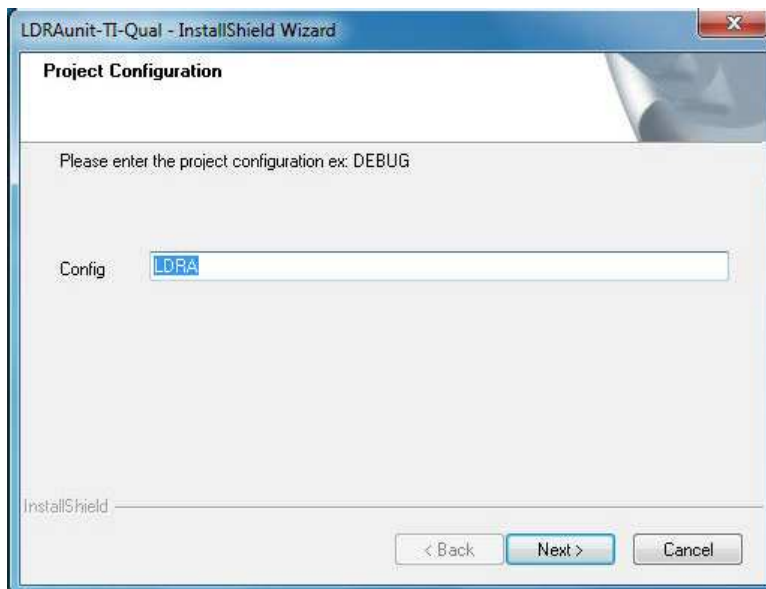


Figure 6. Project Configuration

6. LDRA Unit – Check LDRA FlexLM Server Status

After Installation of the LDRA Unit and before using the SafeTI Hercules Diagnostic Library TAU, check whether the LDRA FlexLM license Server is up and running by using the steps shown in [Figure 7](#) and [Figure 8](#).

NOTE: License Configuration Manager must be run as Admin.

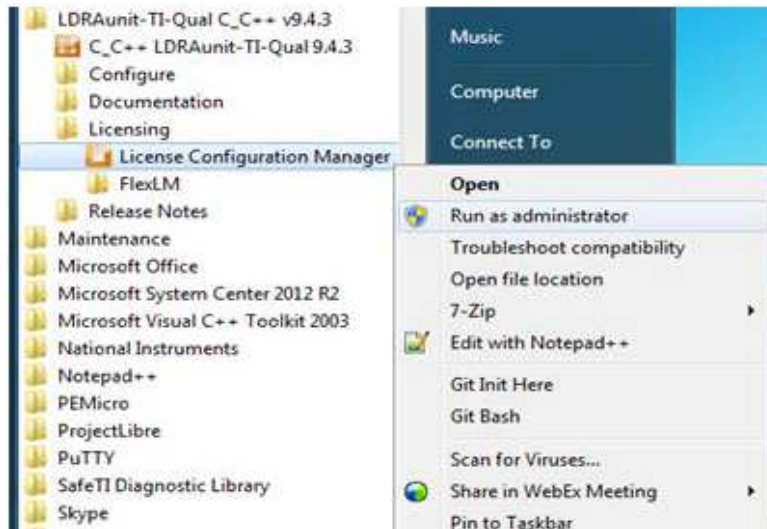


Figure 7. License Configuration Manager

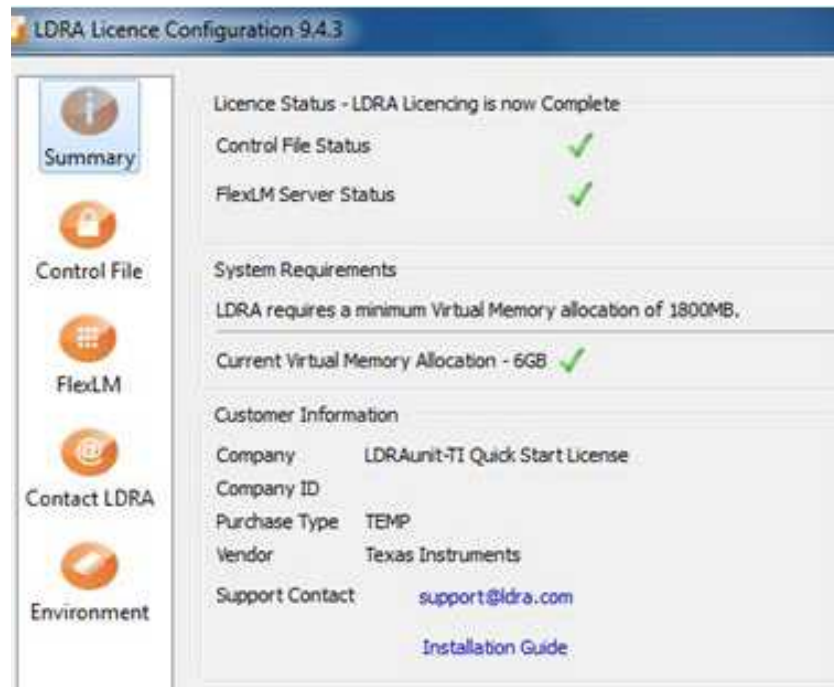



Figure 8. License Configuration Manager 9.4.3

NOTE: IF you see FlexLM Server Status as , either the License is expired or the FlexLM service is not started. Restart or Start the FlexLM License Service in Windows as shown in [Figure 9](#).

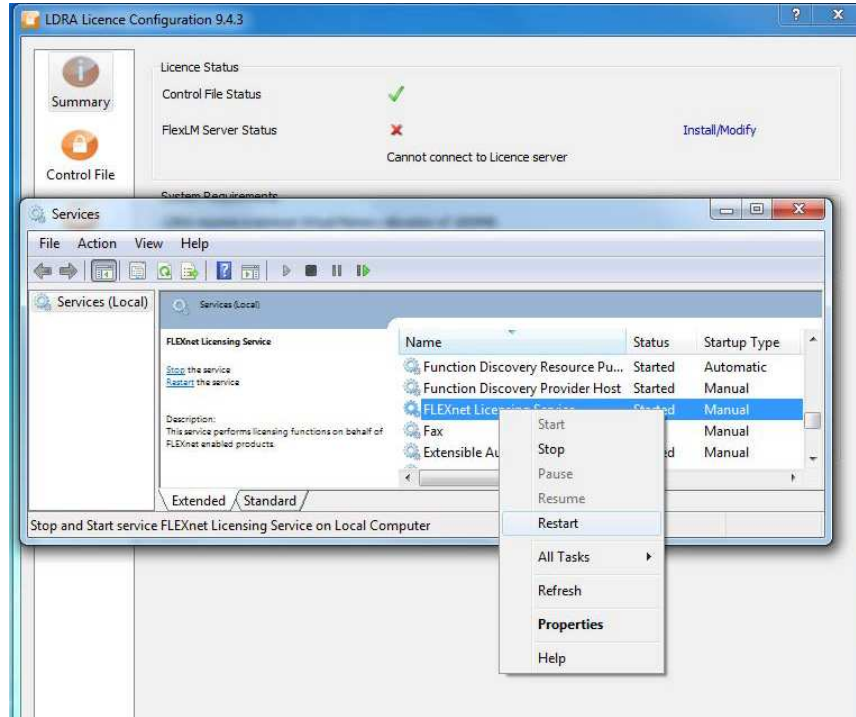


Figure 9. Start/Restart FlexLM License Service

Revision History

NOTE: Page numbers for previous revisions may differ from page numbers in the current version.

Changes from Original (February 2014) to A Revision	Page
• Removed LDRA from contents included in CSP.	1
• Updates were made in Section 1	1
• Added new Section 3	3

IMPORTANT NOTICE AND DISCLAIMER

TI PROVIDES TECHNICAL AND RELIABILITY DATA (INCLUDING DATASHEETS), DESIGN RESOURCES (INCLUDING REFERENCE DESIGNS), APPLICATION OR OTHER DESIGN ADVICE, WEB TOOLS, SAFETY INFORMATION, AND OTHER RESOURCES "AS IS" AND WITH ALL FAULTS, AND DISCLAIMS ALL WARRANTIES, EXPRESS AND IMPLIED, INCLUDING WITHOUT LIMITATION ANY IMPLIED WARRANTIES OF MERCHANTABILITY, FITNESS FOR A PARTICULAR PURPOSE OR NON-INFRINGEMENT OF THIRD PARTY INTELLECTUAL PROPERTY RIGHTS.

These resources are intended for skilled developers designing with TI products. You are solely responsible for (1) selecting the appropriate TI products for your application, (2) designing, validating and testing your application, and (3) ensuring your application meets applicable standards, and any other safety, security, or other requirements. These resources are subject to change without notice. TI grants you permission to use these resources only for development of an application that uses the TI products described in the resource. Other reproduction and display of these resources is prohibited. No license is granted to any other TI intellectual property right or to any third party intellectual property right. TI disclaims responsibility for, and you will fully indemnify TI and its representatives against, any claims, damages, costs, losses, and liabilities arising out of your use of these resources.

TI's products are provided subject to TI's Terms of Sale (www.ti.com/legal/termsofsale.html) or other applicable terms available either on ti.com or provided in conjunction with such TI products. TI's provision of these resources does not expand or otherwise alter TI's applicable warranties or warranty disclaimers for TI products.

Mailing Address: Texas Instruments, Post Office Box 655303, Dallas, Texas 75265
Copyright © 2019, Texas Instruments Incorporated