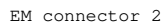
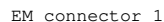

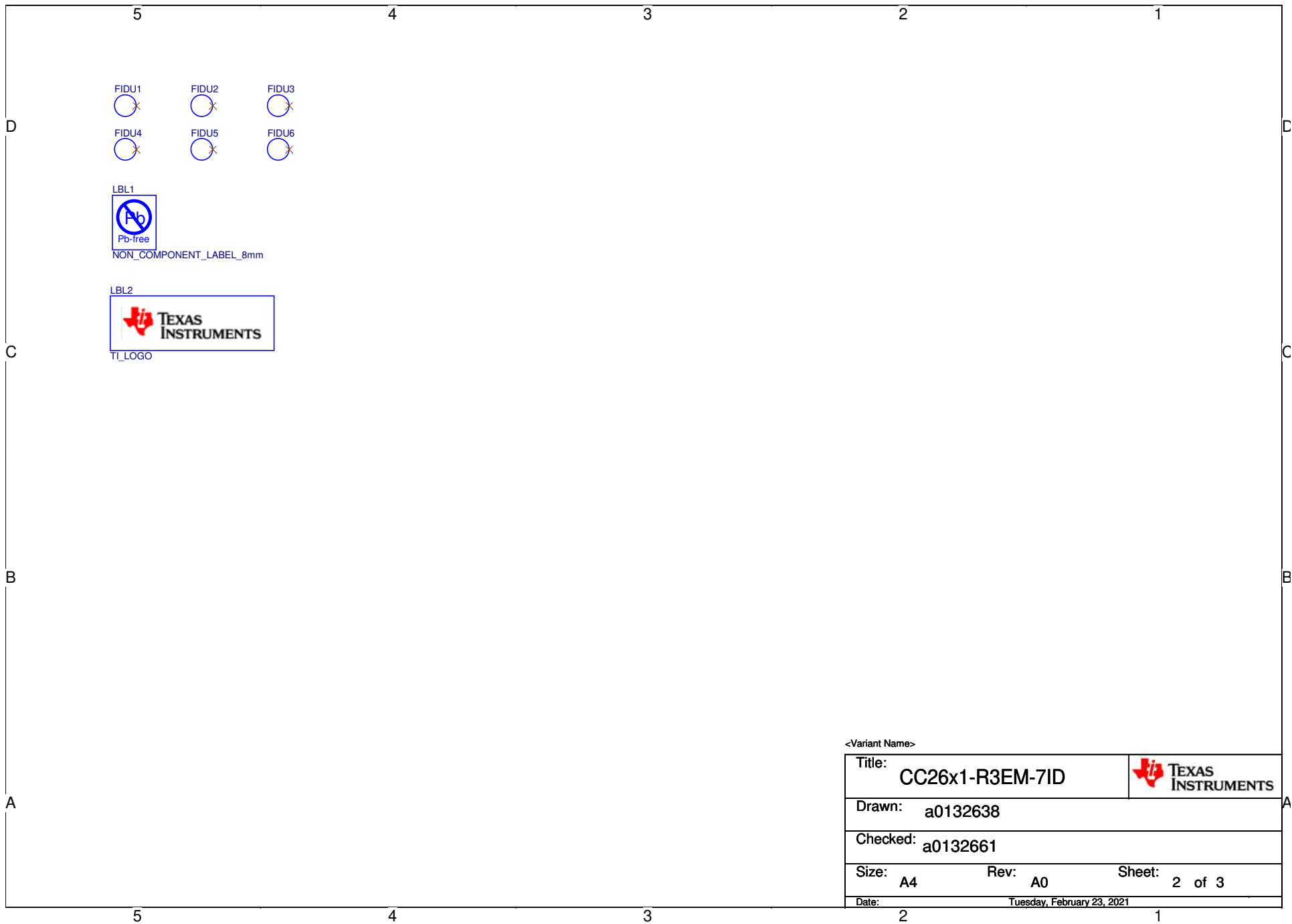


Note that a DC-blocking capacitor must be used if antenna has DC-path to ground.



Title: CC26x1-R3EM-7ID		 TEXAS INSTRUMENTS	
Drawn: a0132638			
Checked: a0132661			
Size: A3		Rev: A0	
		Sheet: 1 of 3	
Date:		Tuesday, February 23, 2021	



5	4	3	2	1
D				

5	4	3	2	1
D				

- | | | | | |
|---|---|---|---|---|
| 5 | 4 | 3 | 2 | 1 |
| D | | | | |
| | | | | |
| | | | | |
| | | | | |
| | | | | |
| | | | | |
| | | | | |
| | | | | |
| | | | | |
| | | | | |
| | | | | |
| | | | | |
| | | | | |
| | | | | |
| | | | | |
| | | | | |
| | | | | |
| | | | | |
| | | | | |
| | | | | |
| | | | | |
| | | | | |
| | | | | |
| | | | | |
| | | | | |
| | | | | |
| | | | | |
| | | | | |
| | | | | |
| | | | | |
| | | | | |

5	4	3	2	1
D				

5

4

3

2

1

D

C

B

A

Revision history:

A0

- Based on CC26x2REM-7ID revision B0.

- Changed C6,C8 from GRM188R60J226MEA0D to GRM188C80J226ME15D

- Changed C11,C13,C21 from GRM1555C1H1R0CA01D to GJM1555C1H1R0CB01D

- Changed C17,C18,C24,C31,C14 from GRM1555C1H120JA01D to GJM1555C1H120JB01D

- Changed C19 from GRM155R61C105KA12D to GRM155C81C105KE15D


- Changed U1 from CC2652R1FRGZR to CC2651R31T0RGZR

- Changed Y1 from FC-135 32.7680KA-AG0 to TZ1166C

- Changed Y2 from NX2016SA 48.000MHz EXS00A-CS05517 to TZ2365C

<Variant Name>

Title:CC26x1-R3EM-7ID

TEXAS
INSTRUMENTS

Drawn:

a0132638

Checked:

a0132661

Size: A4

Rev: A0

Sheet: 3 of 3

Date:

Tuesday, February 23, 2021

5

4

3

2

1