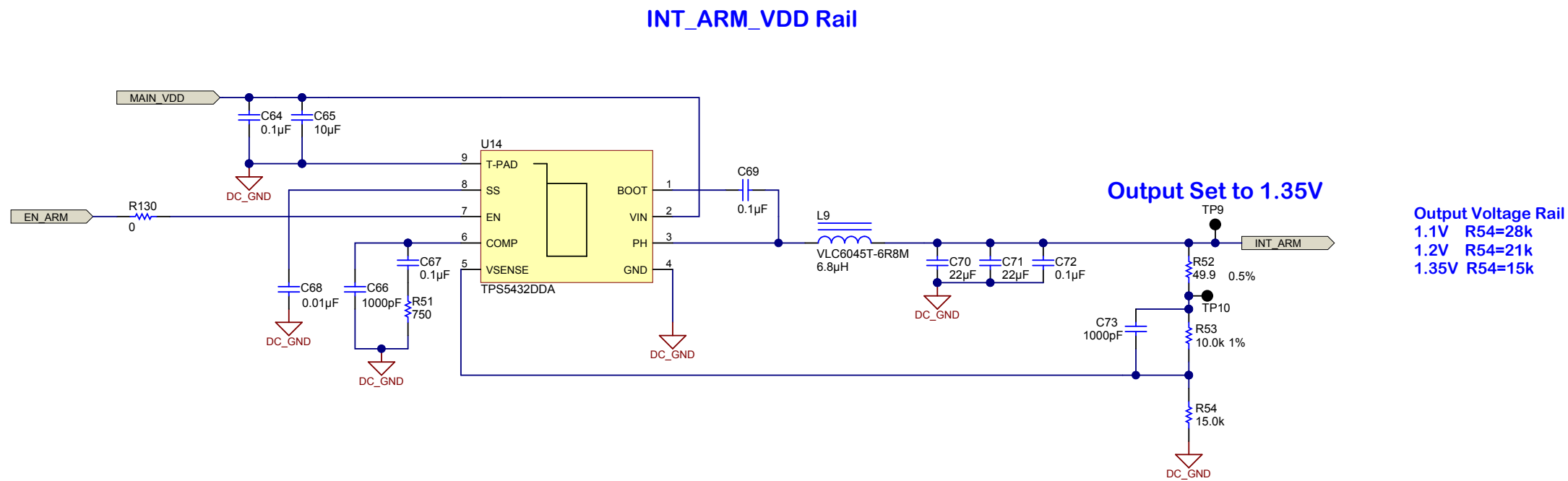


Texas Instruments and/or its licensors do not warrant the accuracy or completeness of this specification or any information contained therein. Texas Instruments and/or its licensors do not warrant that this design will meet the specifications, will be suitable for your application or fit for any particular purpose, or will operate in an implementation. Texas Instruments and/or its licensors do not warrant that the design is production worthy. You should completely validate and test your design implementation to confirm the system functionality for your application.

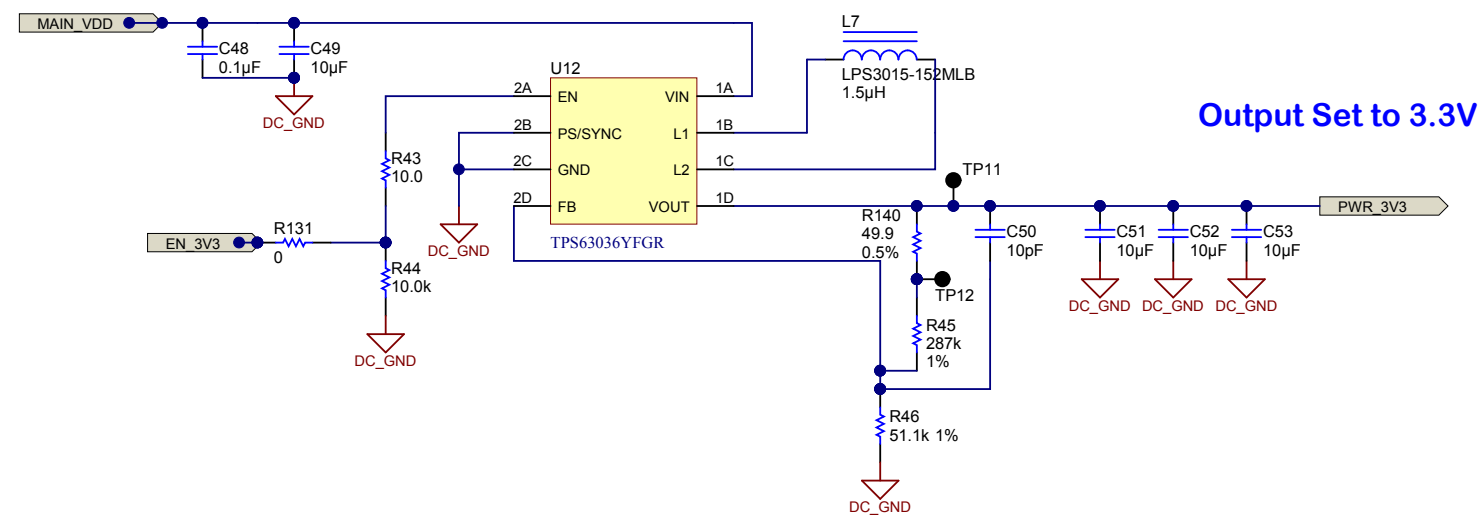
Designed for: Public Release	Mod. Date: 10/28/2013
Project: IPNC Reference Design: Power Module	
Sheet Title: Core and HDVICP Rail Generation Sheet:3 of 10	
Size: B	Schematic: SAT0027 Rev: E4
Assembly Variant: SAT0027-0001	
File: SAT0027-Core VDD.SchDoc	
Contact: http://www.ti.com/support	




<http://www.ti.com>
© Texas Instruments 2013



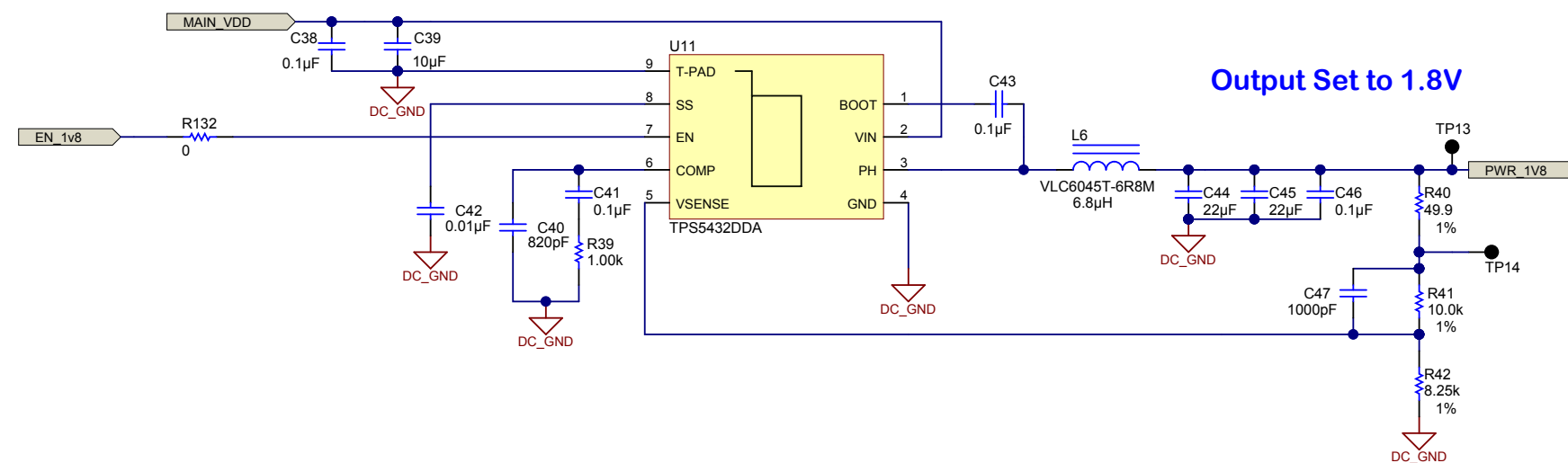
INT_3V3 Rail



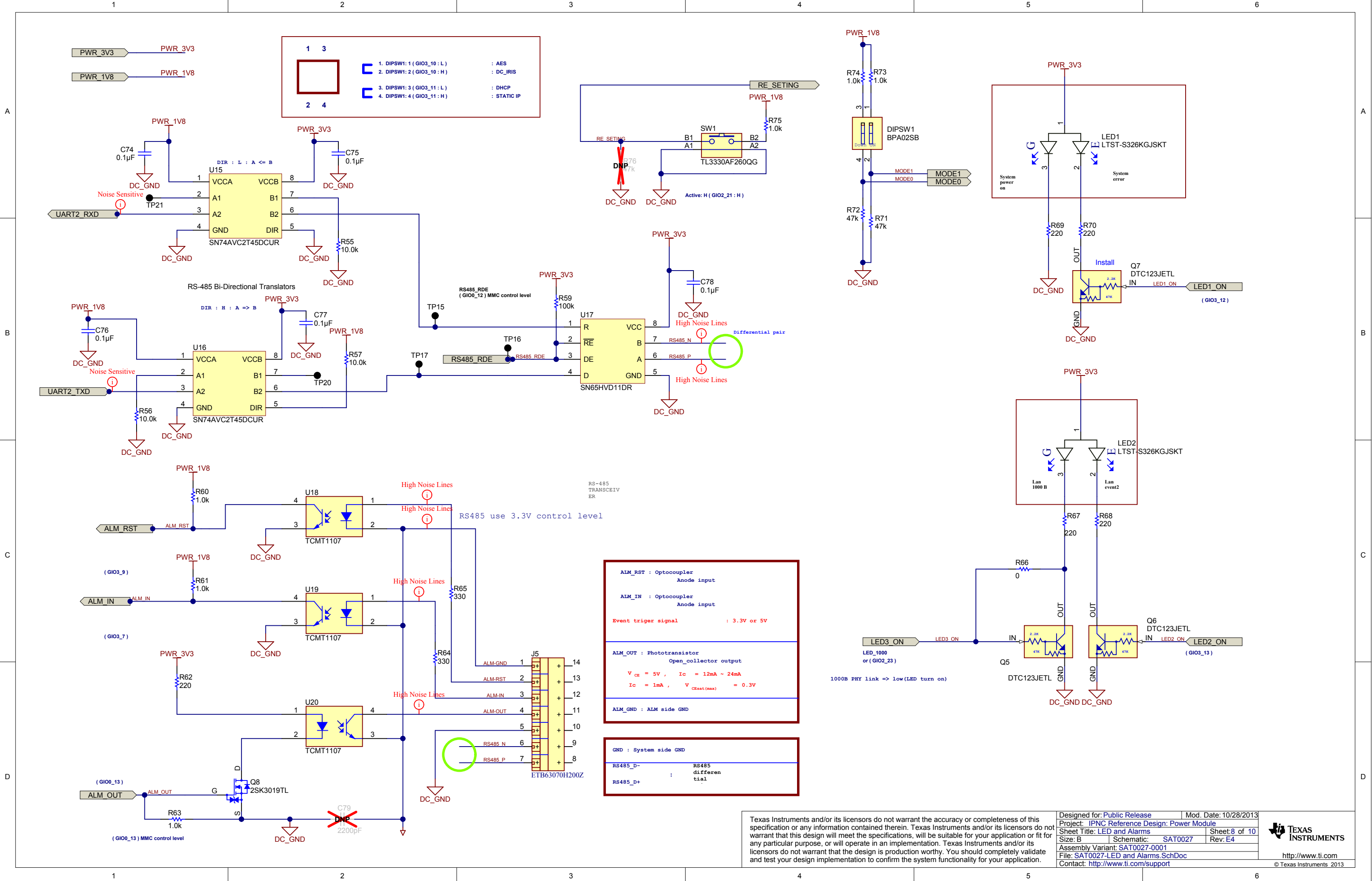
Output Set to 3.3V

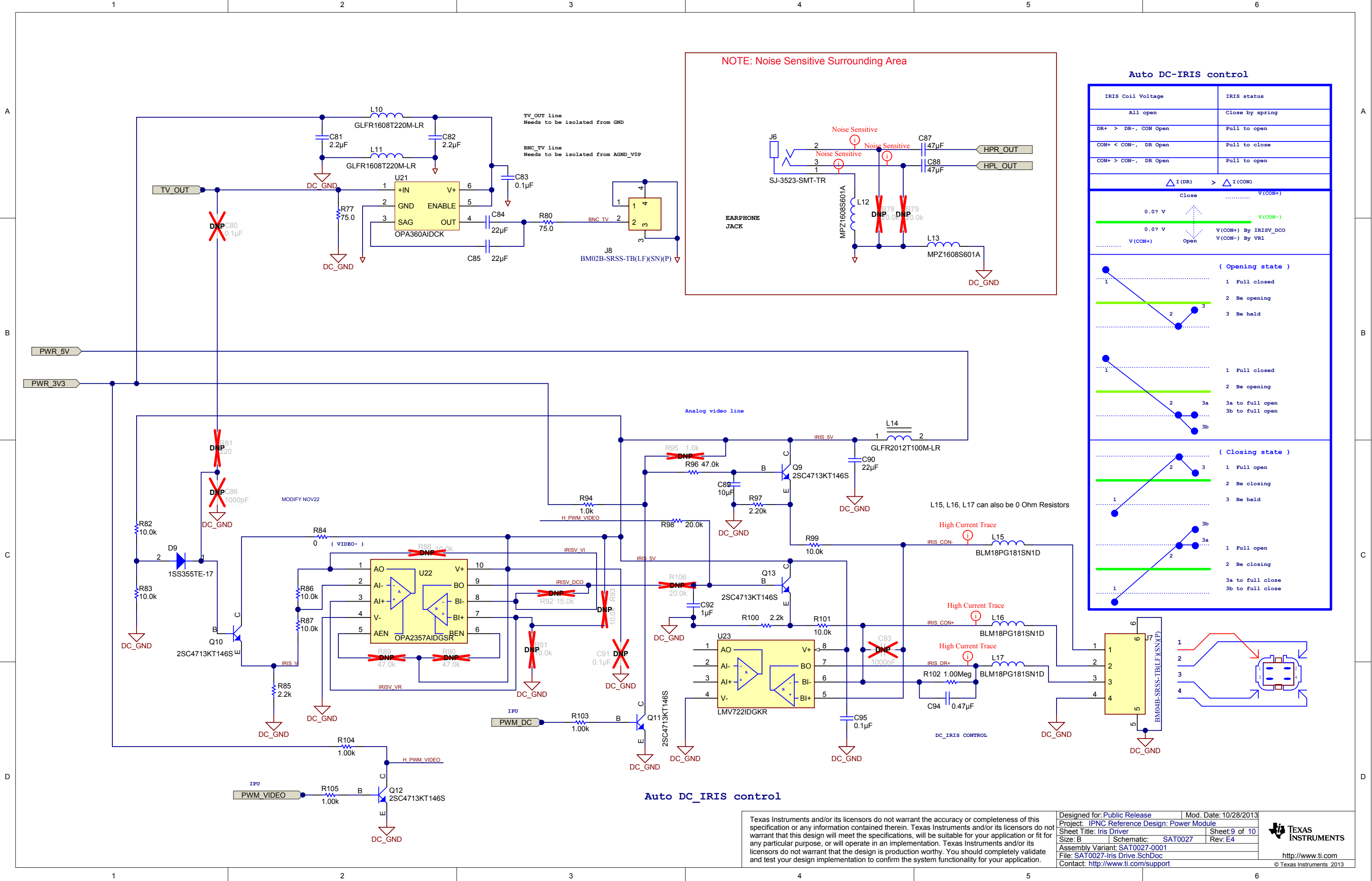
Texas Instruments and/or its licensors do not warrant the accuracy or completeness of this specification or any information contained therein. Texas Instruments and/or its licensors do not warrant that this design will meet the specifications, will be suitable for your application or fit for any particular purpose, or will operate in an implementation. Texas Instruments and/or its licensors do not warrant that the design is production worthy. You should completely validate and test your design implementation to confirm the system functionality for your application.	Designed for: Public Release	Mod. Date: 10/28/2013	 TEXAS INSTRUMENTS http://www.ti.com © Texas Instruments 2013	
	Project Title: IPNC Reference Design: Power Module			
	Sheet Title: 3.3V IO Rail Generation			
	Number: PRJ_Number Rev: E4	Assembly Variant: SAT0027-0001		Sheet: 5 of 10
	SVN Rev: Not in version control	File: SAT0027-3v3VDD.SchDoc		Size: B
	Drawn By: Not shown in title block			
	Engineer: PRJ_Engineer	Contact: http://www.ti.com/support		

PWR_1V8 Rail

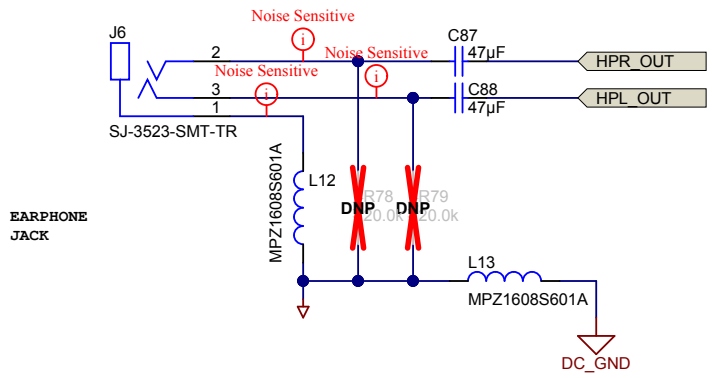


1	2	3	4	5	6
A	THIS PAGE INTENTIONALLY LEFT BLANK				
B					
C					
D					
1	2	3	4	5	6



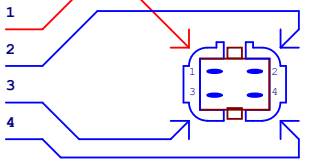
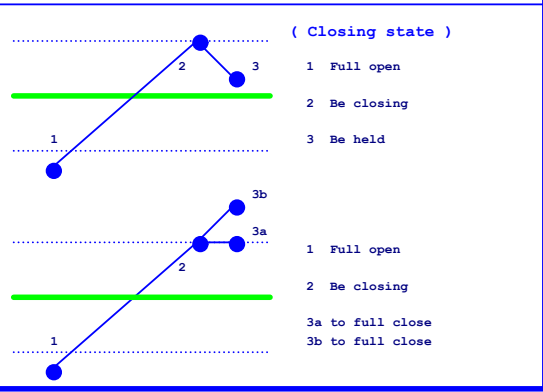
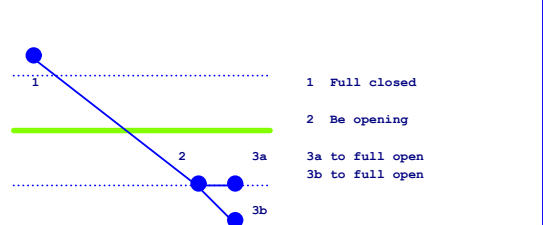
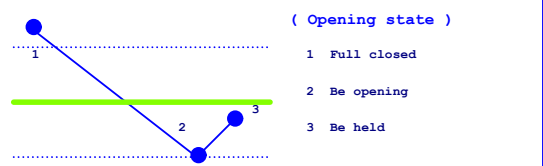
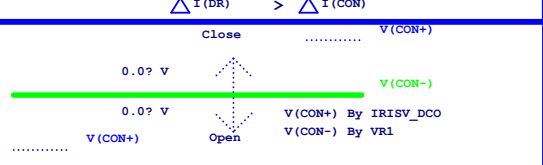


NOTE: Noise Sensitive Surrounding Area



Auto DC-IRIS control

IRIS Coil Voltage	IRIS status
All open	Close by spring
DR+ > DR-, CON Open	Pull to open
CON+ < CON-, DR Open	Pull to close
CON+ > CON-, DR Open	Pull to open



Auto DC_IRIS control

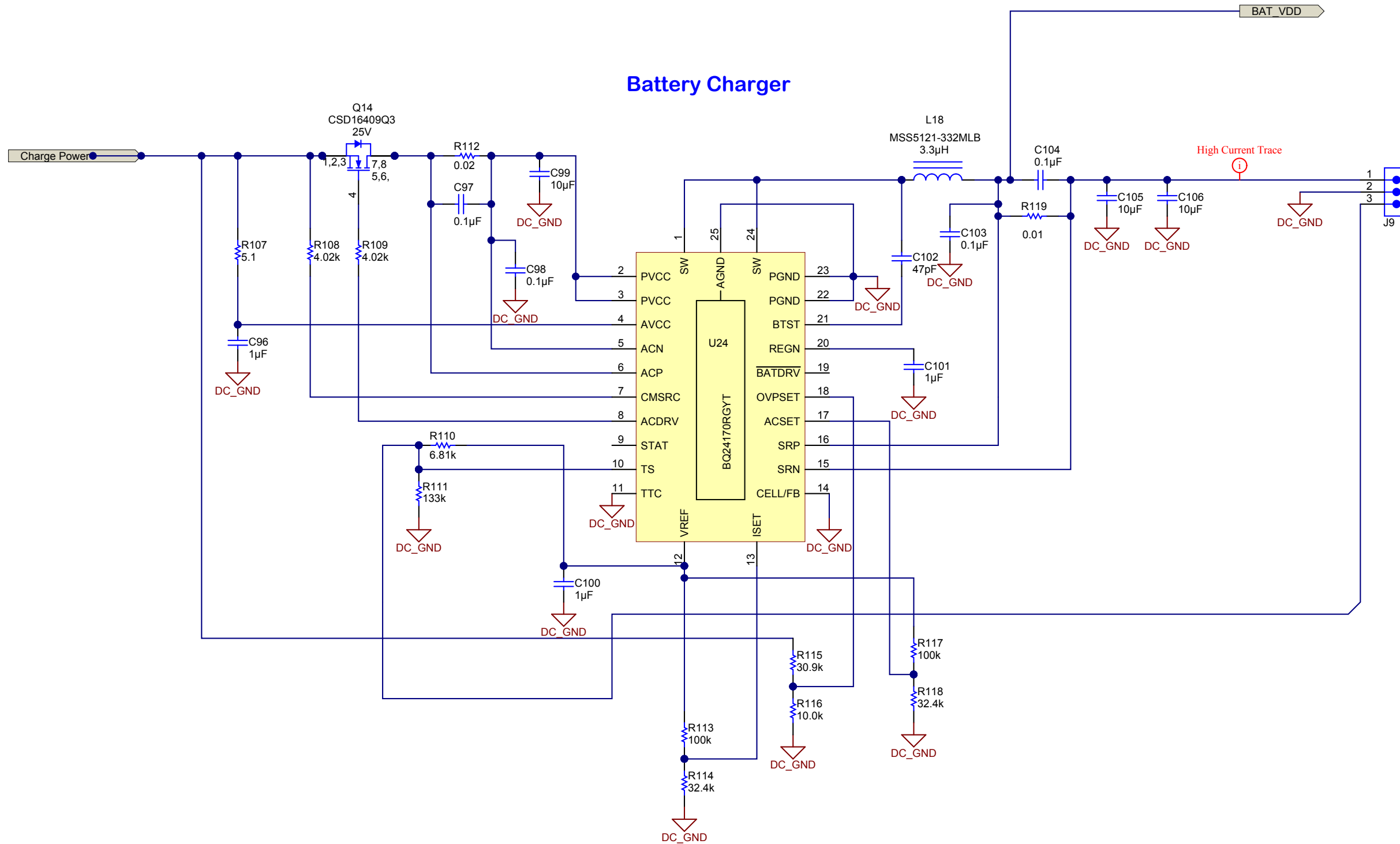
Texas Instruments and/or its licensors do not warrant the accuracy or completeness of this specification or any information contained therein. Texas Instruments and/or its licensors do not warrant that this design will meet the specifications, will be suitable for your application or fit for any particular purpose, or will operate in an implementation. Texas Instruments and/or its licensors do not warrant that the design is production worthy. You should completely validate and test your design implementation to confirm the system functionality for your application.

Designed for: Public Release
Project: IPNC Reference Design: Power Module
Sheet Title: Iris Driver
Size: B
Schematic: SAT0027
File: SAT0027-Iris Drive.SchDoc
Contact: <http://www.ti.com/support>

Mod. Date: 10/28/2013
Sheet: 9 of 10
Rev: E4



Battery Charger



Texas Instruments and/or its licensors do not warrant the accuracy or completeness of this specification or any information contained therein. Texas Instruments and/or its licensors do not warrant that this design will meet the specifications, will be suitable for your application or fit for any particular purpose, or will operate in an implementation. Texas Instruments and/or its licensors do not warrant that the design is production worthy. You should completely validate and test your design implementation to confirm the system functionality for your application.

Designed for: Public Release	Mod. Date: 10/28/2013
Project: IPNC Reference Design: Power Module	
Sheet Title: Battery Backup (Optional)	Sheet: 10 of 10
Size: B	Schematic: 870SAT0027
Assembly Variant: SAT0027-0001	Rev: E4
File: SAT0027-Battery Charger.SchDoc	
Contact: http://www.ti.com/support	



<http://www.ti.com>
© Texas Instruments 2013