

Notes/Revision Information

V0.01 - Initial Release

V0.02 - 10/10/12

p2

- Changed C2 value

p3

- Added C29

- Removed 5V rail

- Changed LD1, LD2 to

D6, D7 and connected to 3V3

p4

- Removed 5V power supply

- Changed R35 to 1.87k

V0.03 - 10/18/12

p4

- Changed C23, C24 parts

(BOM)

- Changed symbol for M1

added multiple pins

V0.04 - 10/22/12

p3

- Updated part U5 Symbol

V0.05 - 11/12/12

p4

- Added MH1.2,3,4

p5

- Added W2, M3

- Added R36, TP1

- Removed J5, J6 and J7

V0.06 - 12/05/12

p2 - Connected MH1 to

Earth GND

p4 - Removed Ground

from MH4

p5

- Moved TP1 to the other

side of R36

- Changed M2 Part (BOM)

V0.07 - 12/07/12

p5

- Moved TP1 to the other

side of R36 (again)

V0.08 - 01/14/13 (R2 Release)

p2

- Updated Part D1 (BOM)

V0.09 - 05/13/13 (R2 Release)

p2

- Changed C22 to DNP

- Added C30

V0.10 - 12/5/13 (R2 Release)

p2

- Changed U1 to 10V

V0.11 - 2/26/14 (R5 Release)

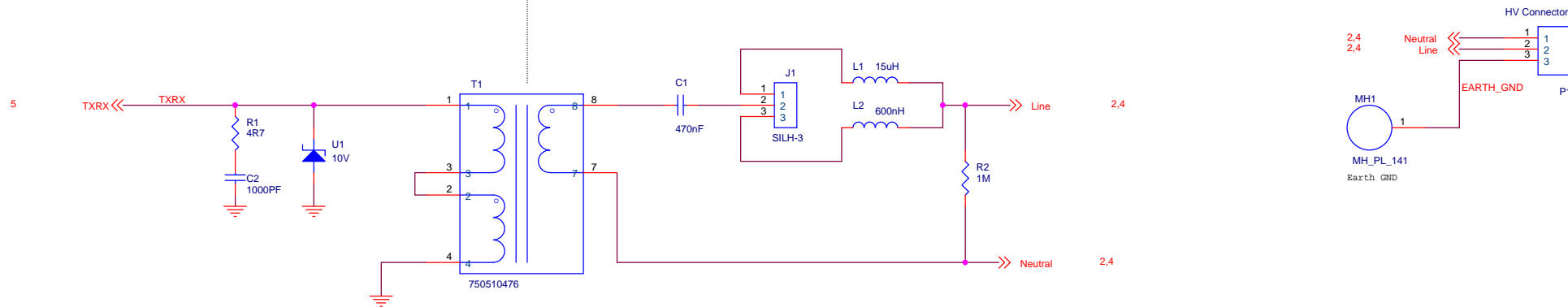
p2

- Added U11

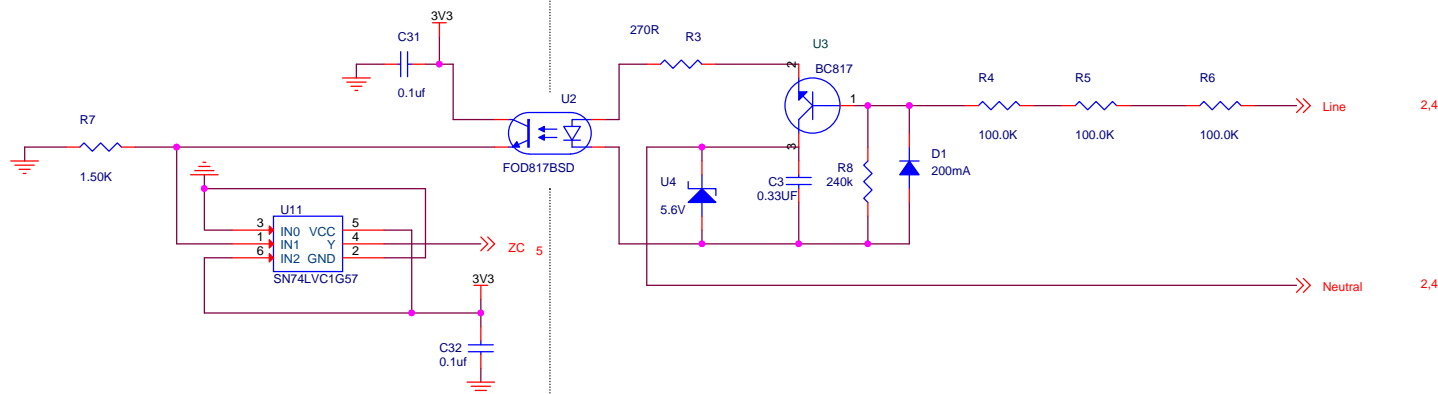
- Added C31, C32

- 01 - Title / Notes
- 02 - Coupling Circuit
- 03 - USB JTAG/UART
- 04 - System Power
- 05 - Connectors

SOMPLC-DOCKV1 R2		TI
Title:		
Page Contents:		01 - Title / Notes
Size:B	<Doc>	Revision: 0.8
Date:	Wednesday, February 26, 2014	Sheet 1 of 5

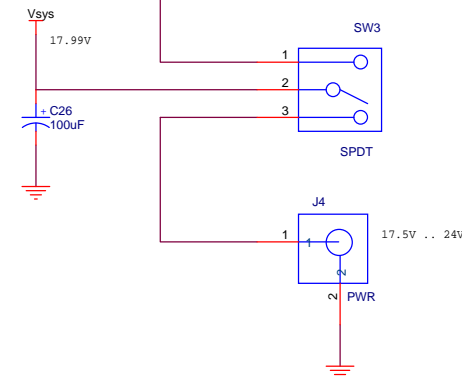
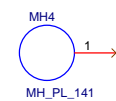
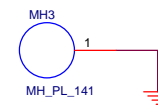
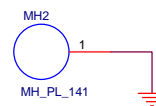
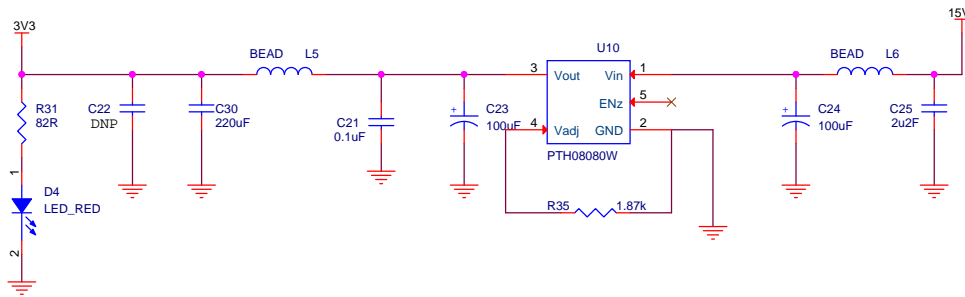
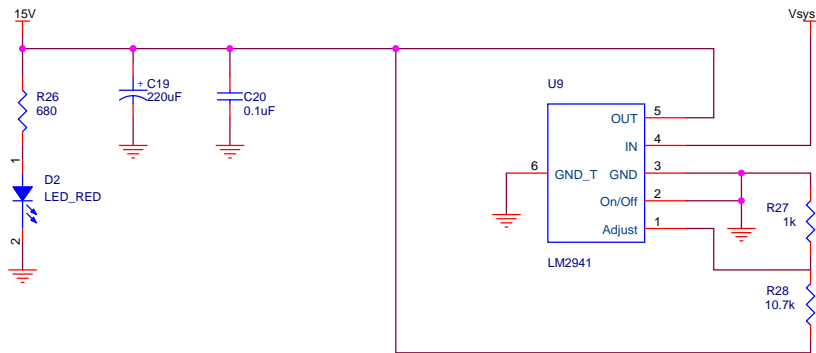


HIGH VOLTAGE !

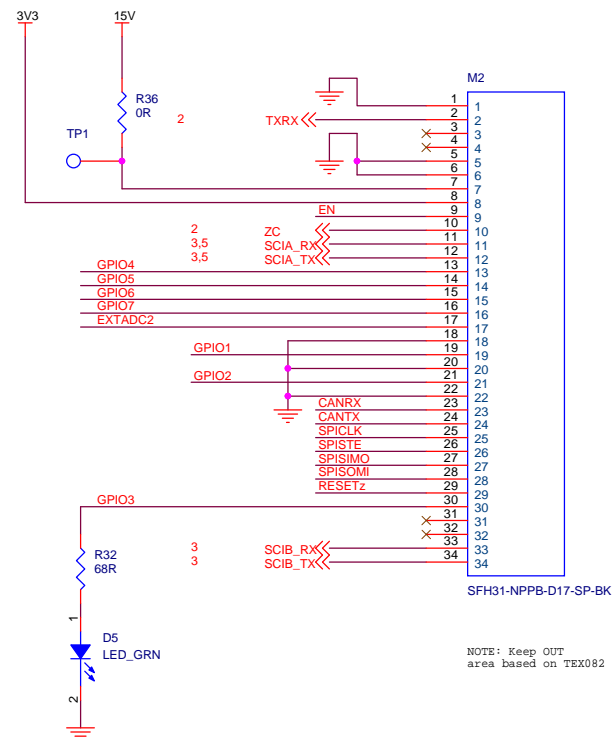
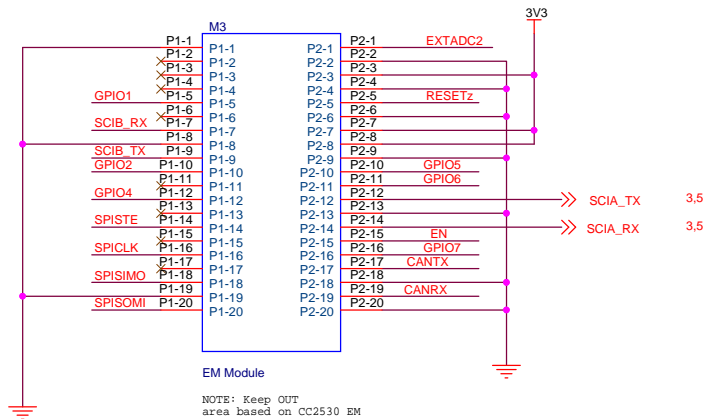


Title: SOMPLC-DOCKV1 R2		TI	
Page Contents: 02 - Coupling Circuit			
Size:B	<Doc>		Revision: 0.8
Date:	Wednesday, February 26, 2014	Sheet 2 of	5





Title: SOMPLC-DOCKV1 R2			TI	
Page Contents: 04 - System Power				
Size: B	<Doc>		Revision: 0.8	
Date: Wednesday, February 26, 2014	Sheet 4 of 5			



Title: SOMPLC-DOCKV1 R2			Revision: 0.8	
Page Contents: 05 - Connectors			Revision: 0.8	
Size: B	<Doc>		Revision: 0.8	
Date:	Wednesday, February 26, 2014		Sheet 5 of 5	