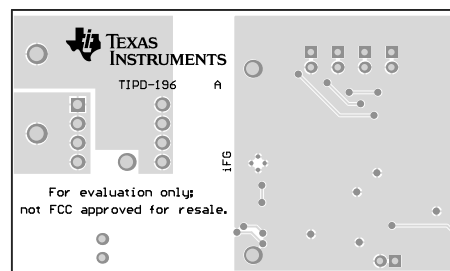
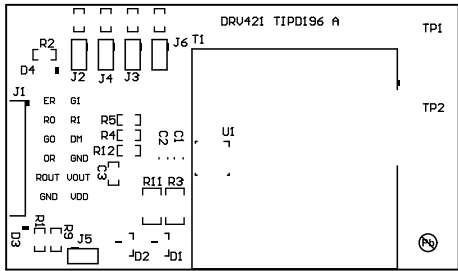


Top Overlay

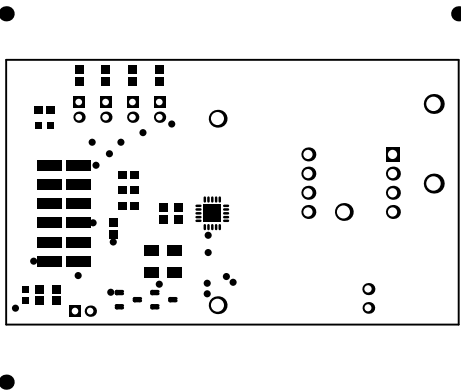


SUN: Not In VersionControl

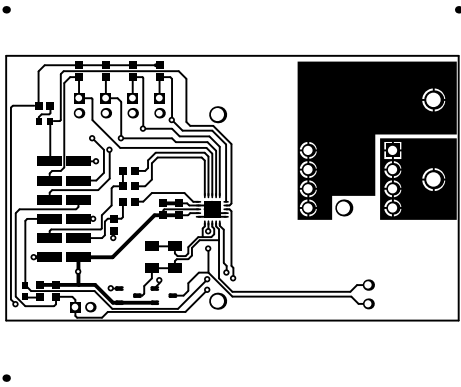
Bottom



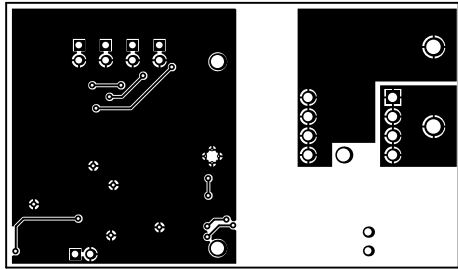
ALL ARTWORK VIEWED FROM TOP SIDE	BOARD #: TIPD-196	REV: E1	SUN REV: Not In VersionControl
LAYER NAME = Top Overlay			
PLOT NAME = Top Overlay	GENERATED : 7/17/2015 11:32:26 AM	TEXAS INSTRUMENTS	



ALL ARTWORK VIEWED FROM TOP SIDE	BOARD #: TIPD-196	REV: E1	SUN REV: Not In VersionControl
LAYER NAME = Top Solder			
PLOT NAME = Top Solder Mask	GENERATED : 7/17/2015 11:32:27 AM	TEXAS INSTRUMENTS	

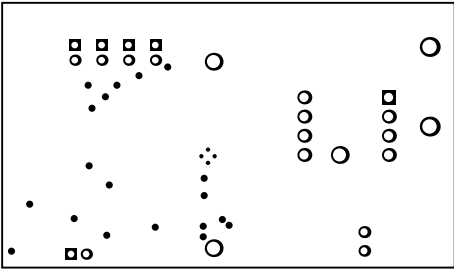


ALL ARTWORK VIEWED FROM TOP SIDE	BOARD #: TIPD-196	REV: E1	SUN REV: Not In VersionControl
LAYER NAME = Top Layer			
PLOT NAME = Top Layer	GENERATED : 7/17/2015 11:32:28 AM	TEXAS INSTRUMENTS	

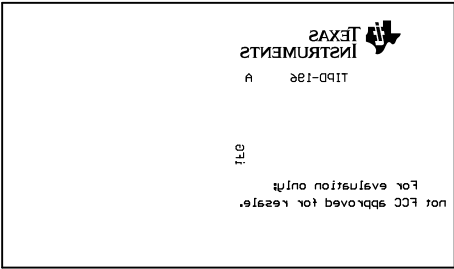


SUN Not In VersionControl

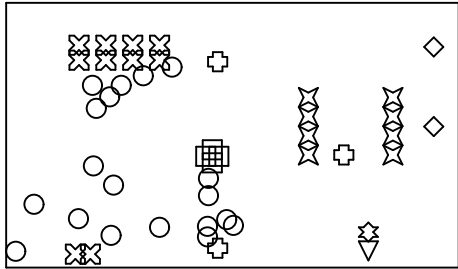
ALL ARTWORK VIEWED FROM TOP SIDE	BOARD #: TIPD-196	REV: E1	SUN REV: Not In VersionControl
LAYER NAME = Bottom Layer			
PLOT NAME = Bottom Layer	GENERATED : 7/17/2015 11:32:29 AM	TEXAS INSTRUMENTS	



ALL ARTWORK VIEWED FROM TOP SIDE	BOARD #: TIPD-196	REV: E1	SUN REV: Not In VersionControl
LAYER NAME = Bottom Solder			
PLOT NAME = Bottom Solder Mask	GENERATED : 7/17/2015 11:32:30 AM	TEXAS INSTRUMENTS	

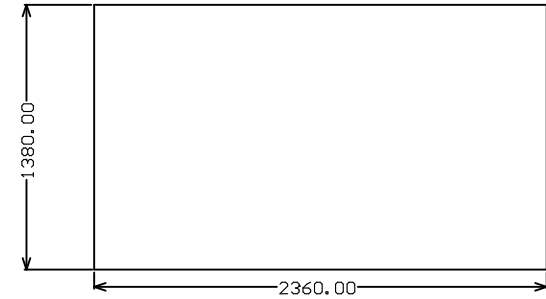


ALL ARTWORK VIEWED FROM TOP SIDE	BOARD #: TIPD-196	REV: E1	SUN REV: Not In VersionControl
LAYER NAME = Bottom Overlay			
PLOT NAME = Bottom Overlay	GENERATED : 7/17/2015 11:32:30 AM		TEXAS INSTRUMENTS

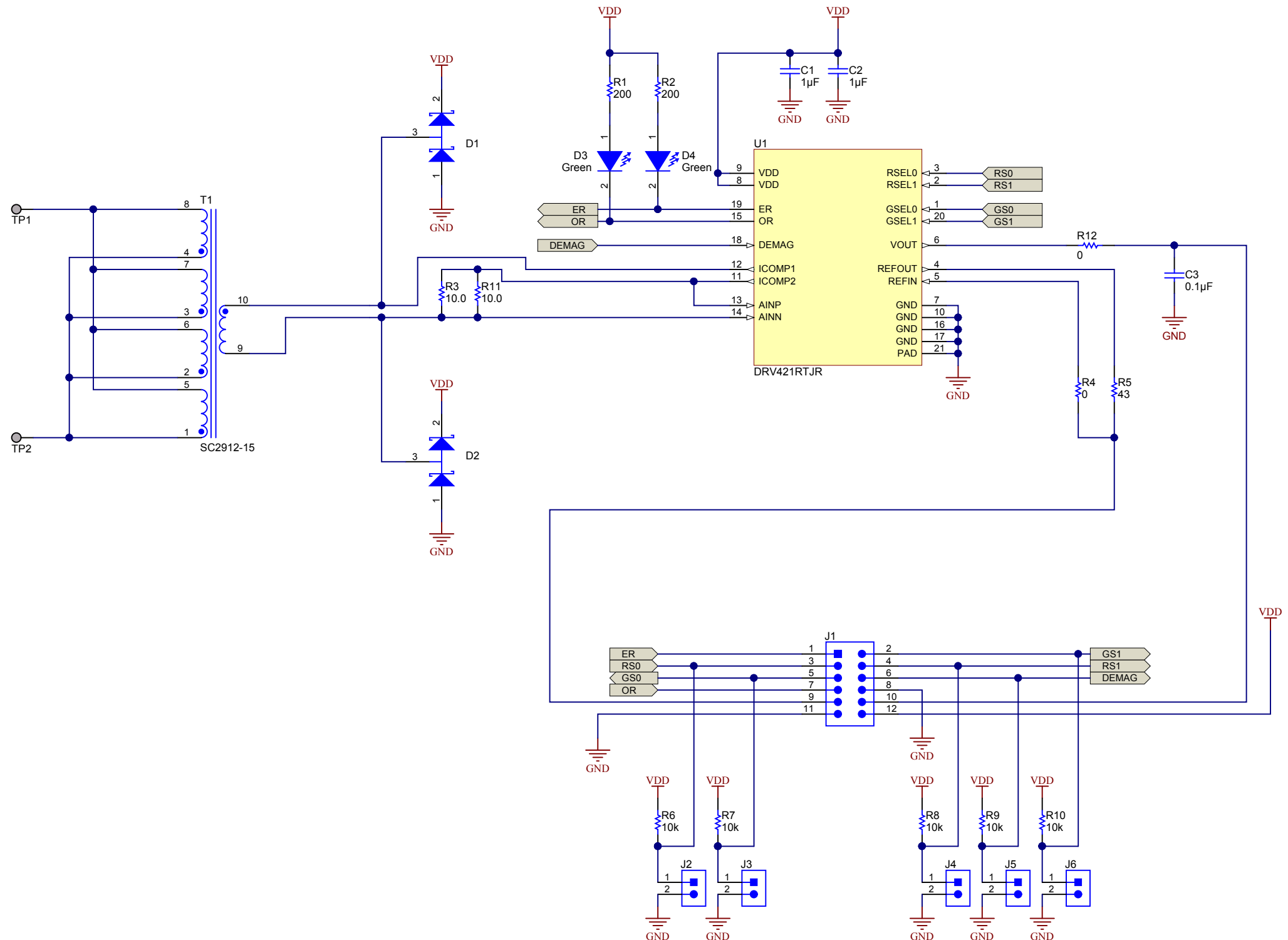


Symbol	Quantity	Finished Hole Size	Plated	Hole Type
□	4	8.00mil (0.203mm)	PTH	Round
○	19	16.00mil (0.406mm)	PTH	Round
⊠	10	35.04mil (0.890mm)	PTH	Round
▽	1	37.40mil (0.950mm)	PTH	Round
☆	1	39.37mil (1.000mm)	PTH	Round
⊠	8	49.21mil (1.250mm)	PTH	Round
⊕	3	68.90mil (1.750mm)	PTH	Round
◇	2	76.00mil (1.930mm)	PTH	Round
	48 Total			

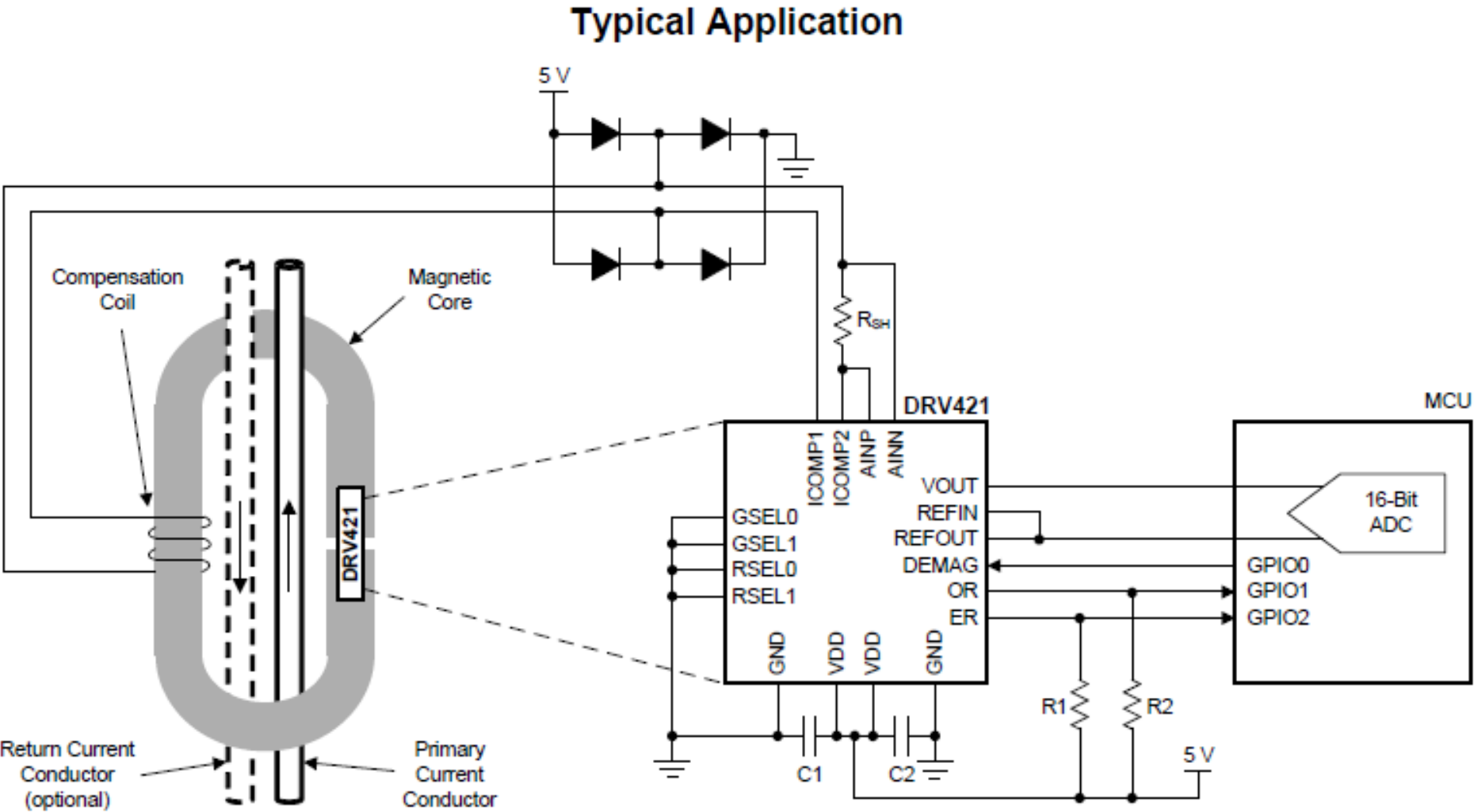
ALL ARTWORK VIEWED FROM TOP SIDE	BOARD #: TIPD-196	REV: E1	SUN REV: Not In VersionControl
LAYER NAME = Drill Drawing			
PLOT NAME = Drill Drawing	GENERATED : 7/17/2015 11:32:31 AM	TEXAS INSTRUMENTS	




ALL ARTWORK VIEWED FROM TOP SIDE	BOARD #: TIPD-196	REV: E1	SUN REV: Not In VersionControl
LAYER NAME = M2 Board Dimensions			
PLOT NAME = Board Dimensions	GENERATED : 7/17/2015 11:32:32 AM		TEXAS INSTRUMENTS



Revision History				
Rev	ECN #	Approved Date	Approved by	Notes
N/A	N/A	N/A	N/A	N/A



Texas Instruments and/or its licensors do not warrant the accuracy or completeness of this specification or any information contained therein. Texas Instruments and/or its licensors do not warrant that this design will meet the specifications, will be suitable for your application or fit for any particular purpose, or will operate in an implementation. Texas Instruments and/or its licensors do not warrant that the design is production worthy. You should completely validate and test your design implementation to confirm the system functionality for your application.

Orderable: N/A	Designed for: Public Release	Mod. Date: 7/16/2015	 TEXAS INSTRUMENTS http://www.ti.com © Texas Instruments 2015
TID #: CTIPD-196	Project Title: $\pm 15A$ Current Sensor using Closed-Loop Compens	Sheet Title:	
Number: TIPD-196	Rev: E1	Assembly Variant: [No Variations]	
SVN Rev: Version control disabled	Drawn By:	File: CoverSheet.SchDoc	
Engineer: Tom Hendrick	Contact: http://www.ti.com/support	Size: B	



FID1



FID2




FID3

PCB Number: TIPD-196
PCB Rev: E1

PCB
LOGO
Texas Instruments

PCB
LOGO
Pb-Free Symbol

Texas Instruments and/or its licensors do not warrant the accuracy or completeness of this specification or any information contained therein. Texas Instruments and/or its licensors do not warrant that this design will meet the specifications, will be suitable for your application or fit for any particular purpose, or will operate in an implementation. Texas Instruments and/or its licensors do not warrant that the design is production worthy. You should completely validate and test your design implementation to confirm the system functionality for your application.

Orderable: N/A	Designed for: Public Release	Mod. Date: 7/13/2015	 TEXAS INSTRUMENTS http://www.ti.com © Texas Instruments 2015
TID #: CTIPD-196	Project Title: ±15A Current Sensor using Closed-Loop Compens		
Number: TIPD-196	Rev: E1	Sheet Title:	
SVN Rev: Version control disabled	Assembly Variant: [No Variations]	Sheet: 3 of 3	
Drawn By:	File: TID_Hardware.SchDoc	Size: B	
Engineer: Tom Hendrick	Contact: http://www.ti.com/support		