

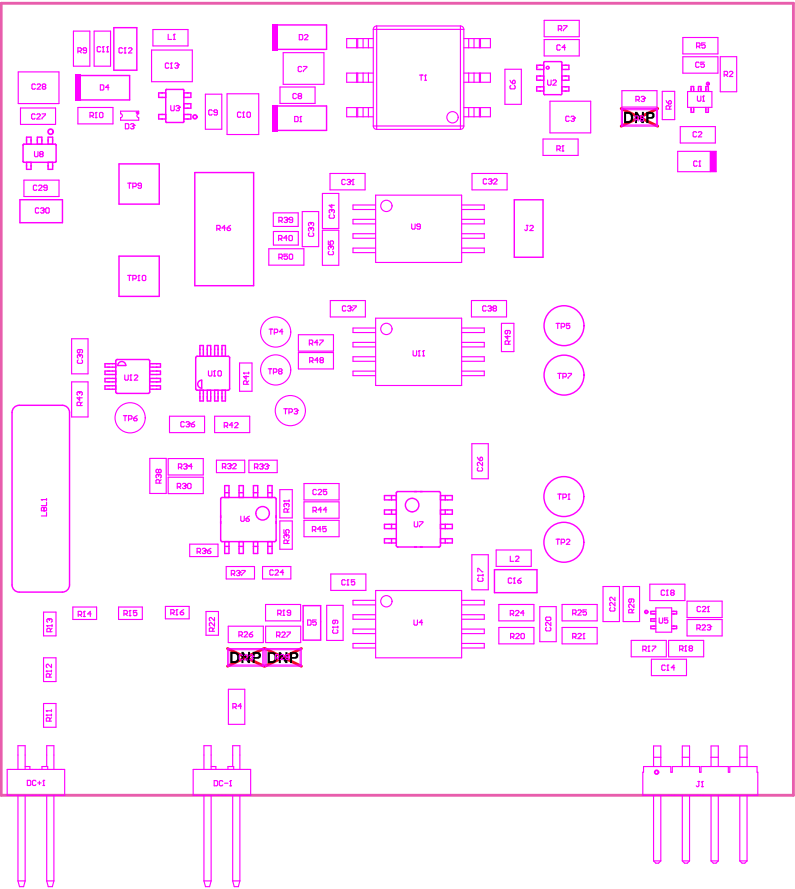
- Z21

Install label in silkscreened box after final wash. Text shall be 8 pt font. Text shall be per the Label Table in the PDF schematic.
- Z22

These assemblies are ESD sensitive, ESD precautions shall be observed.
- Z23

These assemblies must be clean and free from flux and all contaminants. Use of no clean flux is not acceptable.
- Z24

These assemblies must comply with workmanship standards IPC-A-610 Class 2, unless otherwise specified.

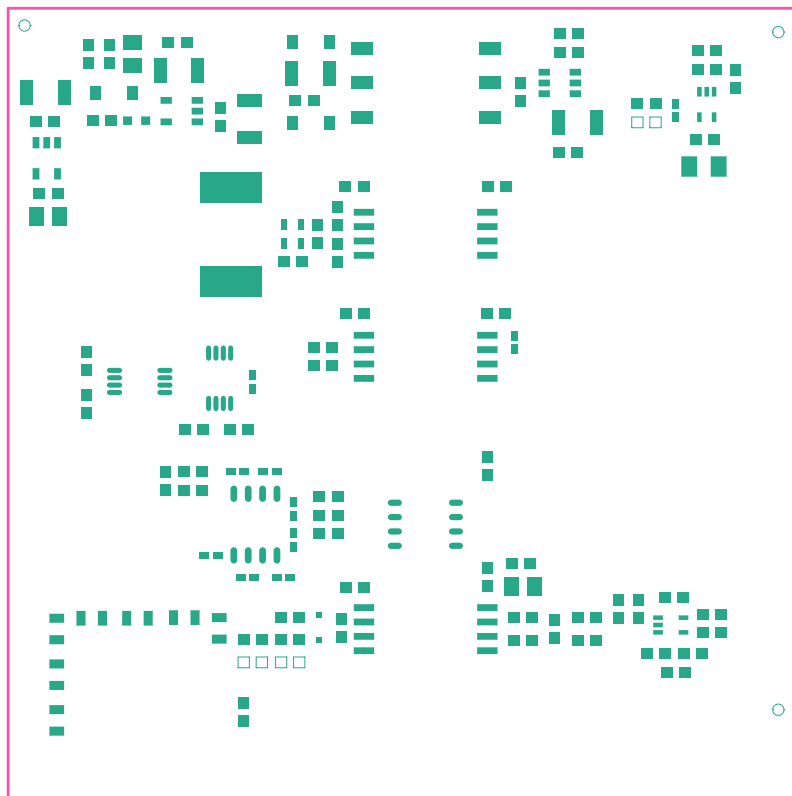


COMPONENTS MARKED "DNP" SHOULD NOT BE POPULATED.

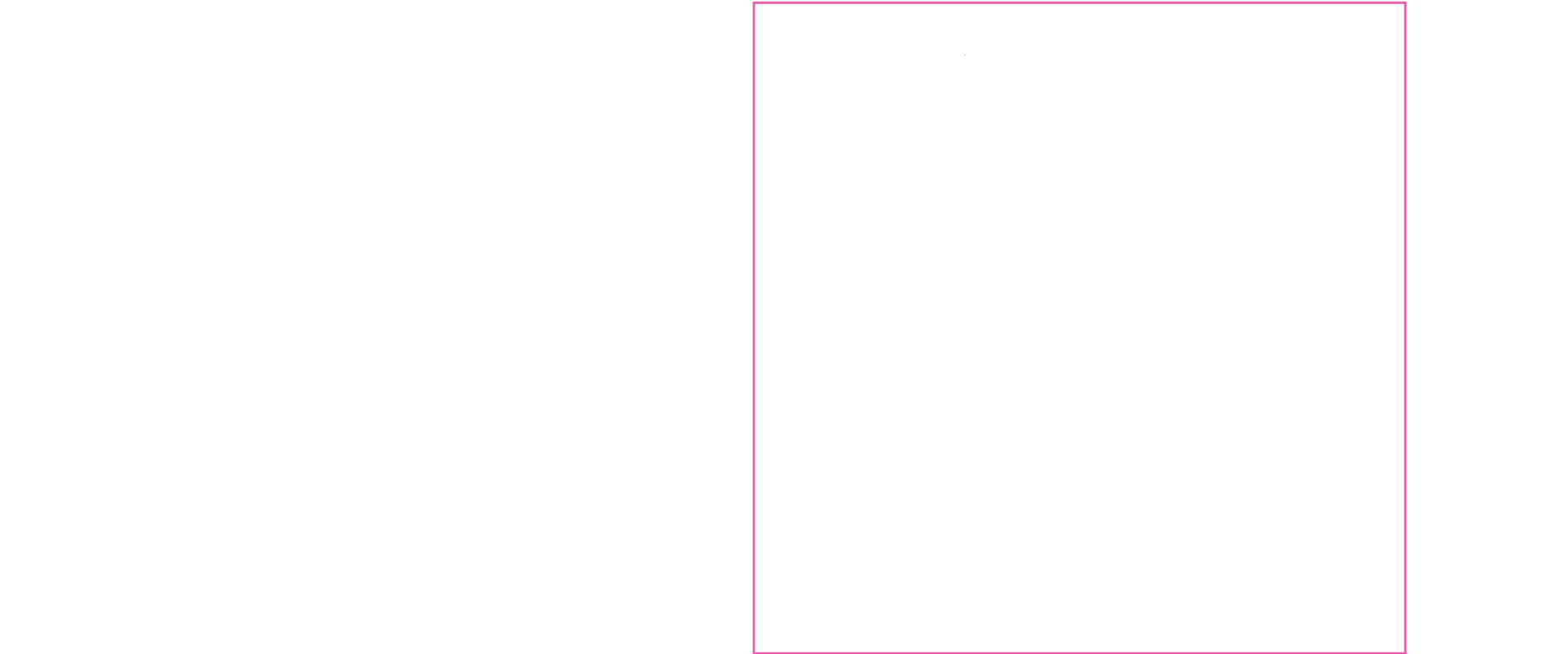
ASSEMBLY VARIANTS:

001

PCB VIEWED FROM TOP SIDE	BOARD #:	T10A-010065_DC_V1_Fault	REV:	E2	SUN REV:	Not In VersionControl
LAYER NAME =	MS Assembly Top	T10 #:	T10A-010065			
PLOT NAME =	Top Layer Assembly Drawing	GENERATED :	9/12/2019	11:48:52 AM	TEXAS INSTRUMENTS	



Top Paste



COMPONENTS MARKED 'DNP' SHOULD NOT BE POPULATED.
ASSEMBLY VARIANT: 001

PCB VIEWED FROM BOTTOM SIDE	BOARD #: TIDA-010065_DC_V1_Fault	REV: E2	SVN REV: Not In VersionControl
LAYER NAME = M6 Assembly Bottom	TID #: TIDA-010065		
PLOT NAME = Bottom LayerAssembly Drawing	GENERATED : 9/12/2019 11:48:54 AM		TEXAS INSTRUMENTS

Bottom Paste

