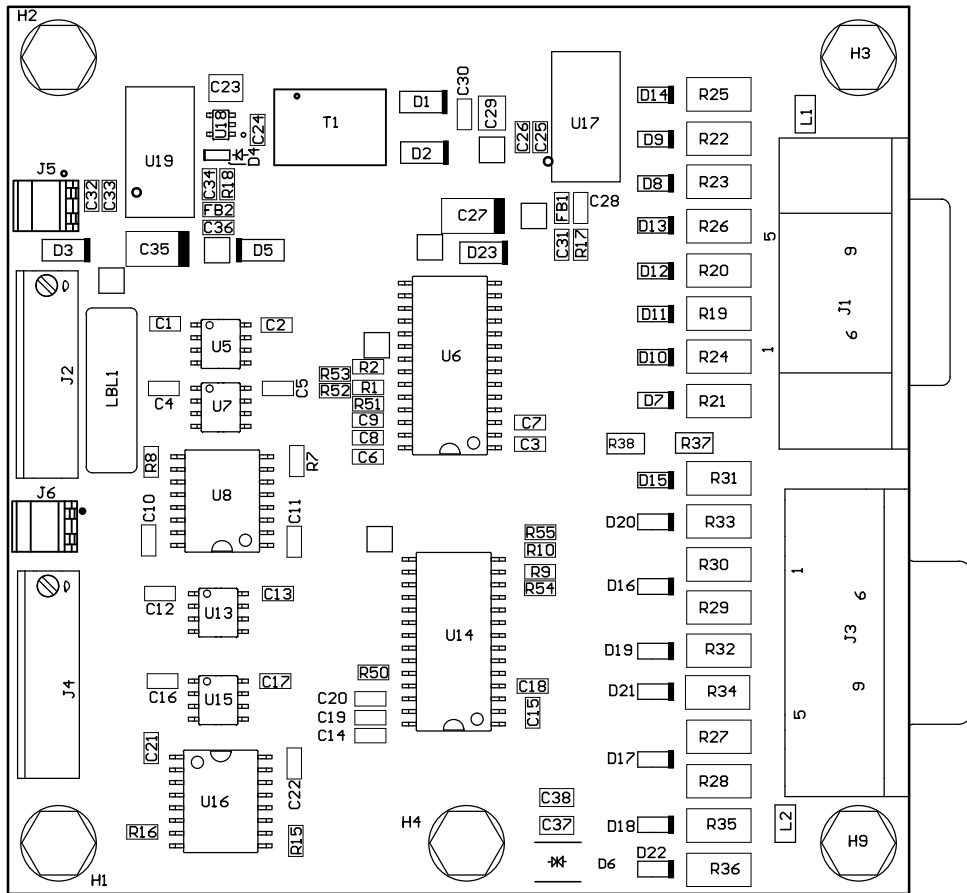


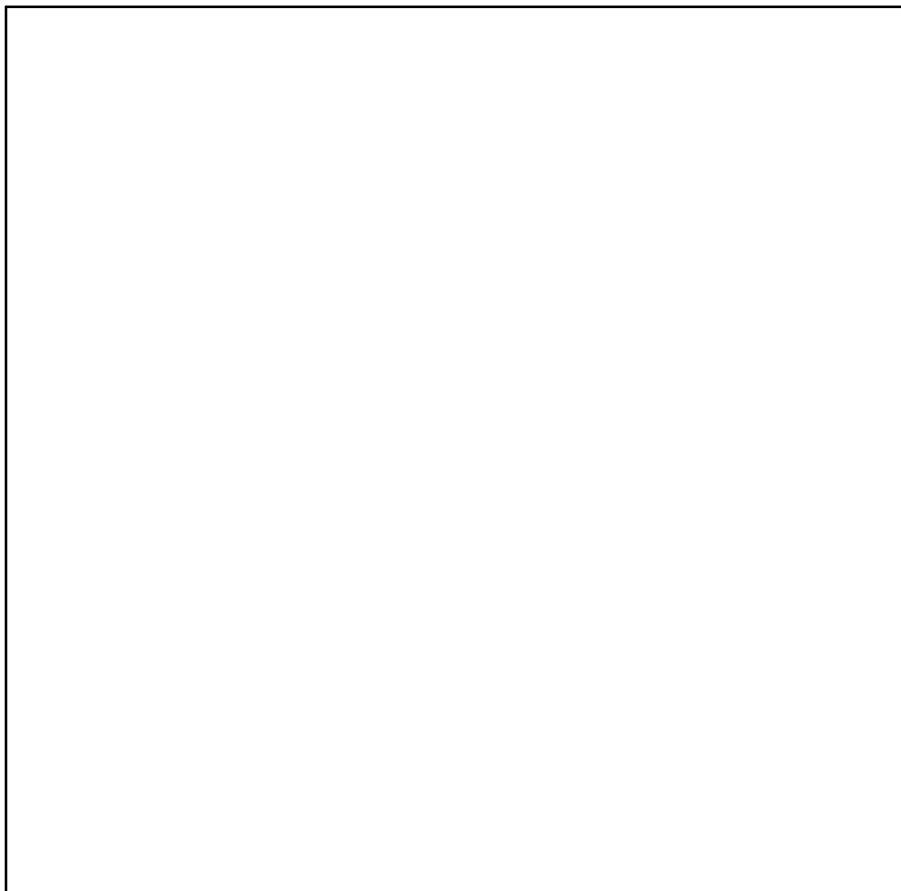
ALL ARTWORK VIEWED FROM TOP SIDE	BOARD #: TIDA-00557	REV: A0	SUN REV: Not In VersionControl
LAYER NAME = Top Paste			
PLOT NAME = TIDA-00557.GTP	GENERATED : 5/25/2015	5:12:29 PM	TEXAS INSTRUMENTS

Z21 ■ Install label in silkscreened box after final wash. Text shall be 8 pt font. Text shall be per the Label Table in the PDF schematic.
Z22 ■ These assemblies are ESD sensitive, ESD precautions shall be observed.
Z23 ■ These assemblies must be clean and free from flux and all contaminants. Use of no clean flux is not acceptable.
Z24 ■ These assemblies must comply with workmanship standards IPC-A-610 Class 2, unless otherwise specified.



COMPONENTS MARKED 'DNP' SHOULD NOT BE POPULATED.
ASSEMBLY VARIANT: [No Variations]

PCB VIEWED FROM TOP SIDE	BOARD #: TIDA-00557	REV: A0	SUN REV: Not In VersionControl
LAYER NAME Assembly top			
PLOT NAME = TIDA-00557.GM5	GENERATED : 5/25/2015 3:10:58 PM	TEXAS INSTRUMENTS	



ALL ARTWORK VIEWED FROM TOP SIDE	BOARD #: TIDA-00557	REV: A0	SUN REV: Not In VersionControl
LAYER NAME = M1 Board Outline			
PLOT NAME = TIDA-00557.GM1	GENERATED : 4/21/2015	3:53:17 PM	TEXAS INSTRUMENTS