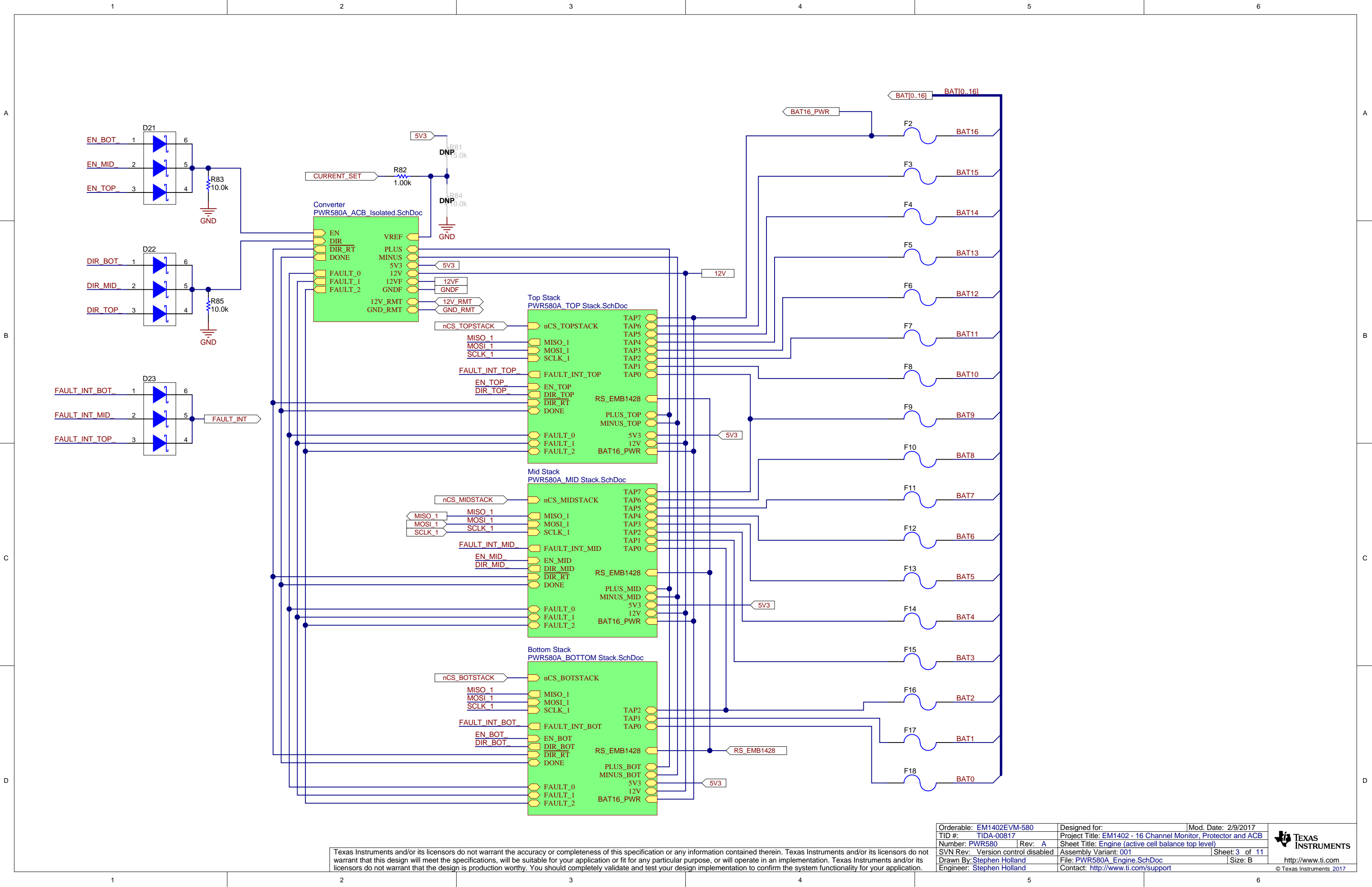


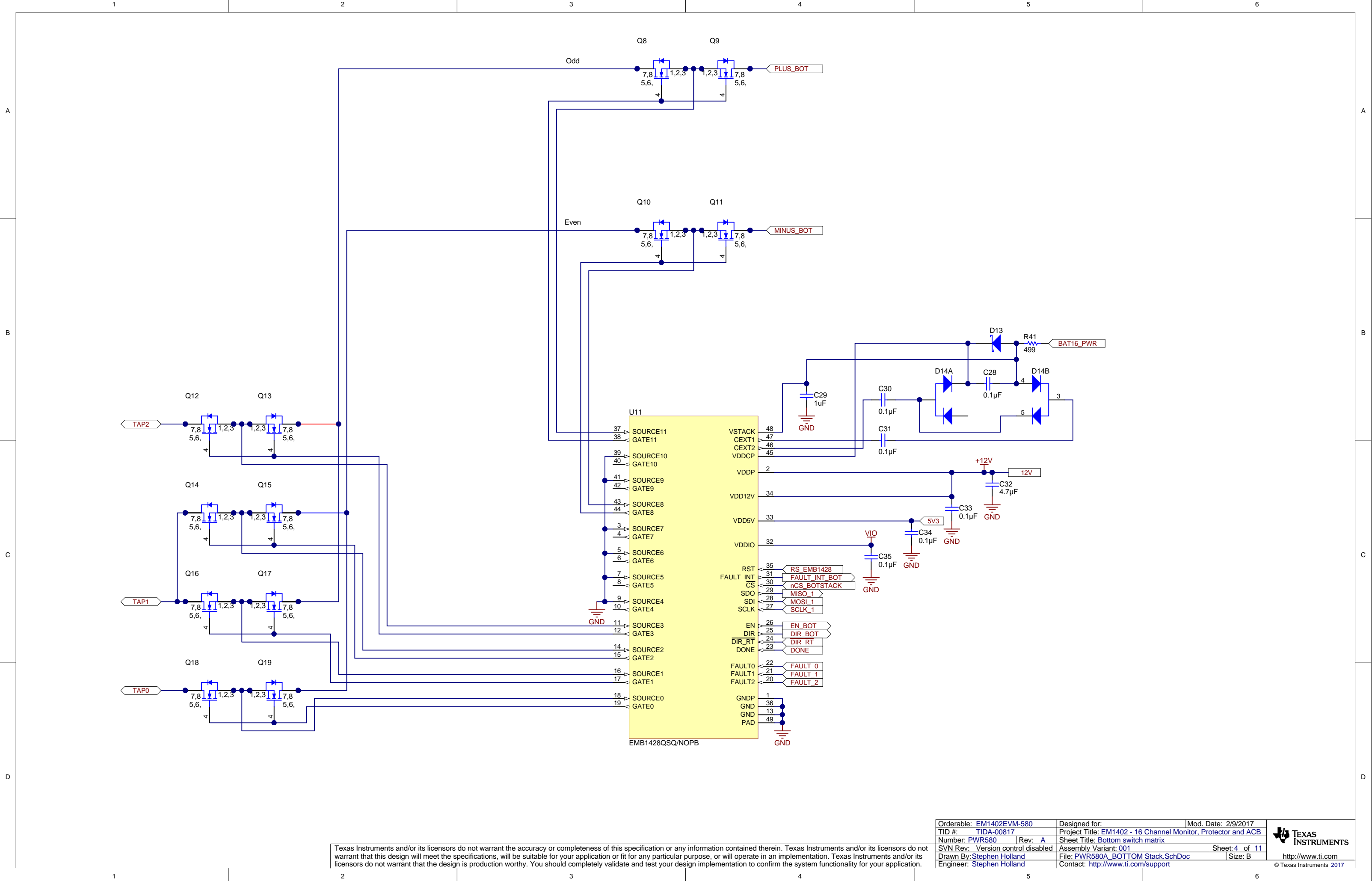
Texas Instruments and/or its licensors do not warrant the accuracy or completeness of this specification or any information contained therein. Texas Instruments and/or its licensors do not warrant that this design will meet the specifications, will be suitable for your application or fit for any particular purpose, or will operate in an implementation. Texas Instruments and/or its licensors do not warrant that the design is production worthy. You should completely validate and test your design implementation to confirm the system functionality for your application.

Orderable: EM1402EVM-580	Designed for:	Mod. Date: 2/9/2017
TID #: TIDA-00817	Project Title: EM1402 - 16 Channel Monitor, Protector and ACB	
Number: PWR580	Rev: A	Sheet Title: Cell Sensing (AFE)
SVN Rev: Version control disabled	Assembly Variant: 001	Sheet: 2 of 11
Drawn By: Stephen Holland	File: PWR580A_bq76PL455A-Q1.SchDoc	Size: B
Engineer: Stephen Holland	Contact: http://www.ti.com/support	



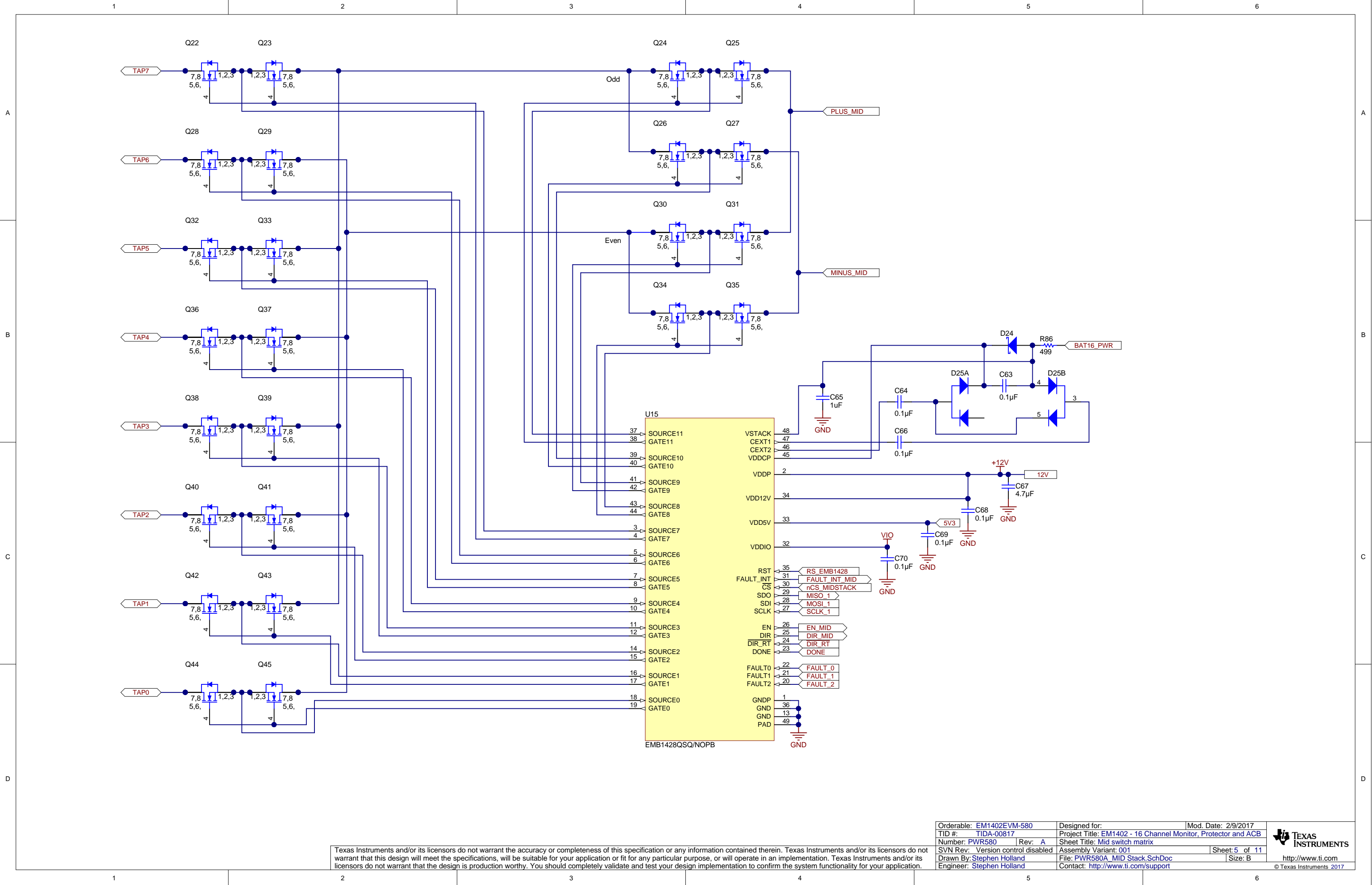
Texas Instruments and/or its licensors do not warrant the accuracy or completeness of this specification or any information contained therein. Texas Instruments and/or its licensors do not warrant that this design will meet the specifications, will be suitable for your application or fit for any particular purpose, or will operate in an implementation. Texas Instruments and/or its licensors do not warrant that the design is production worthy. You should completely validate and test your design implementation to confirm the system functionality for your application.

Orderable: EM1402EVM-580	Designed for:	Mod. Date: 2/9/2017
TID #: TIDA-00817	Project Title: EM1402 - 16 Channel Monitor, Protector and ACB	
Number: PWR580	Rev: A	Sheet Title: Engine (active cell balance top level)
SVN Rev: Version control disabled	Assembly Variant: 001	Sheet: 3 of 11
Drawn By: Stephen Holland	File: PWR580A_Engine.SchDoc	Size: B
Engineer: Stephen Holland	Contact: http://www.ti.com/support	



Texas Instruments and/or its licensors do not warrant the accuracy or completeness of this specification or any information contained therein. Texas Instruments and/or its licensors do not warrant that this design will meet the specifications, will be suitable for your application or fit for any particular purpose, or will operate in an implementation. Texas Instruments and/or its licensors do not warrant that the design is production worthy. You should completely validate and test your design implementation to confirm the system functionality for your application.

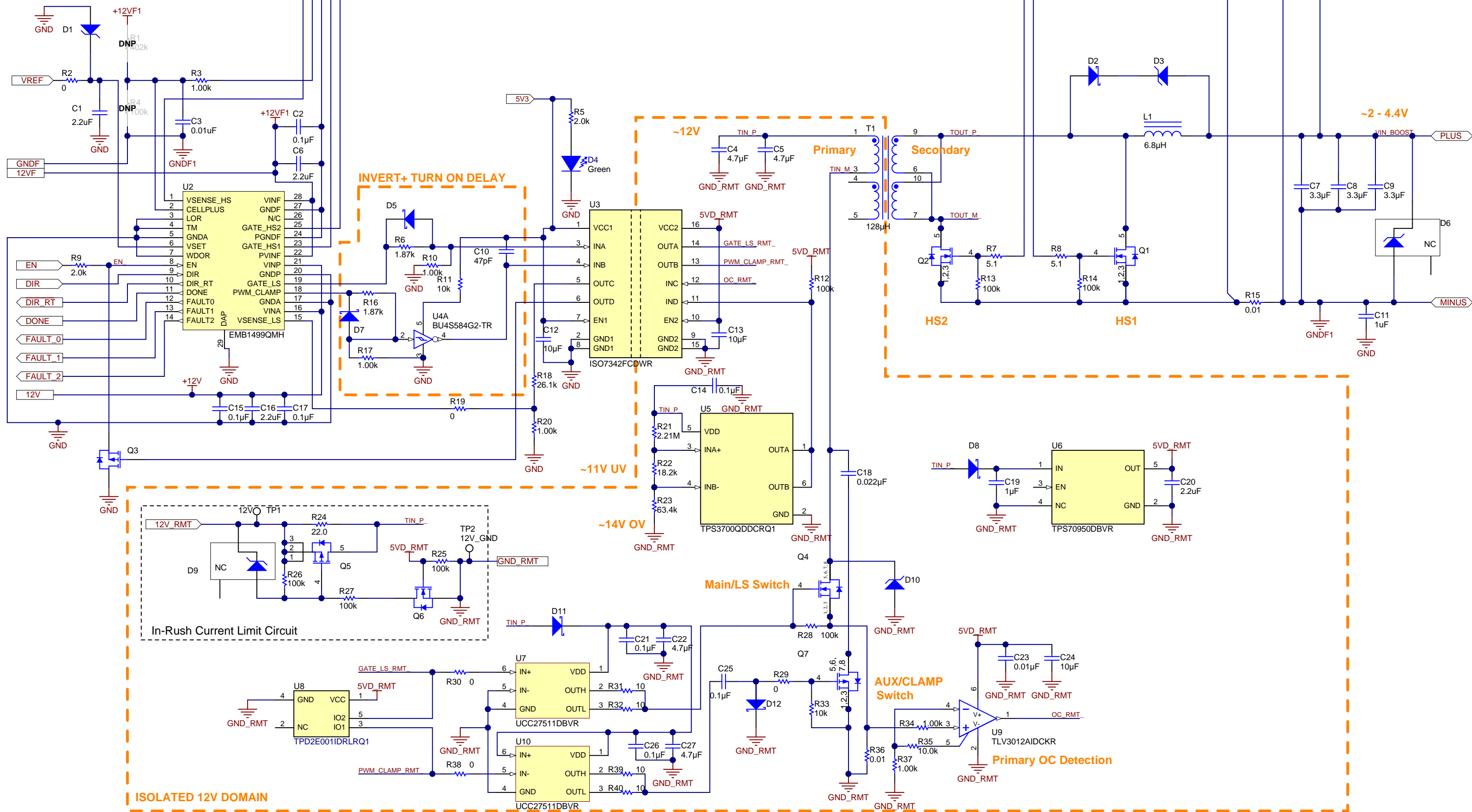
Orderable: EM1402EVM-580		Designed for:		Mod. Date: 2/9/2017	
TID #: TIDA-00817		Project Title: EM1402 - 16 Channel Monitor, Protector and ACB		Sheet: 4 of 11	
Number: PWR580		Rev: A		Assembly Variant: 001	
SVN Rev: Version control disabled		File: PWR580A_BOTTOM Stack.SchDoc		Size: B	
Drawn By: Stephen Holland		Contact: http://www.ti.com/support			
Engineer: Stephen Holland					



Texas Instruments and/or its licensors do not warrant the accuracy or completeness of this specification or any information contained therein. Texas Instruments and/or its licensors do not warrant that this design will meet the specifications, will be suitable for your application or fit for any particular purpose, or will operate in an implementation. Texas Instruments and/or its licensors do not warrant that the design is production worthy. You should completely validate and test your design implementation to confirm the system functionality for your application.

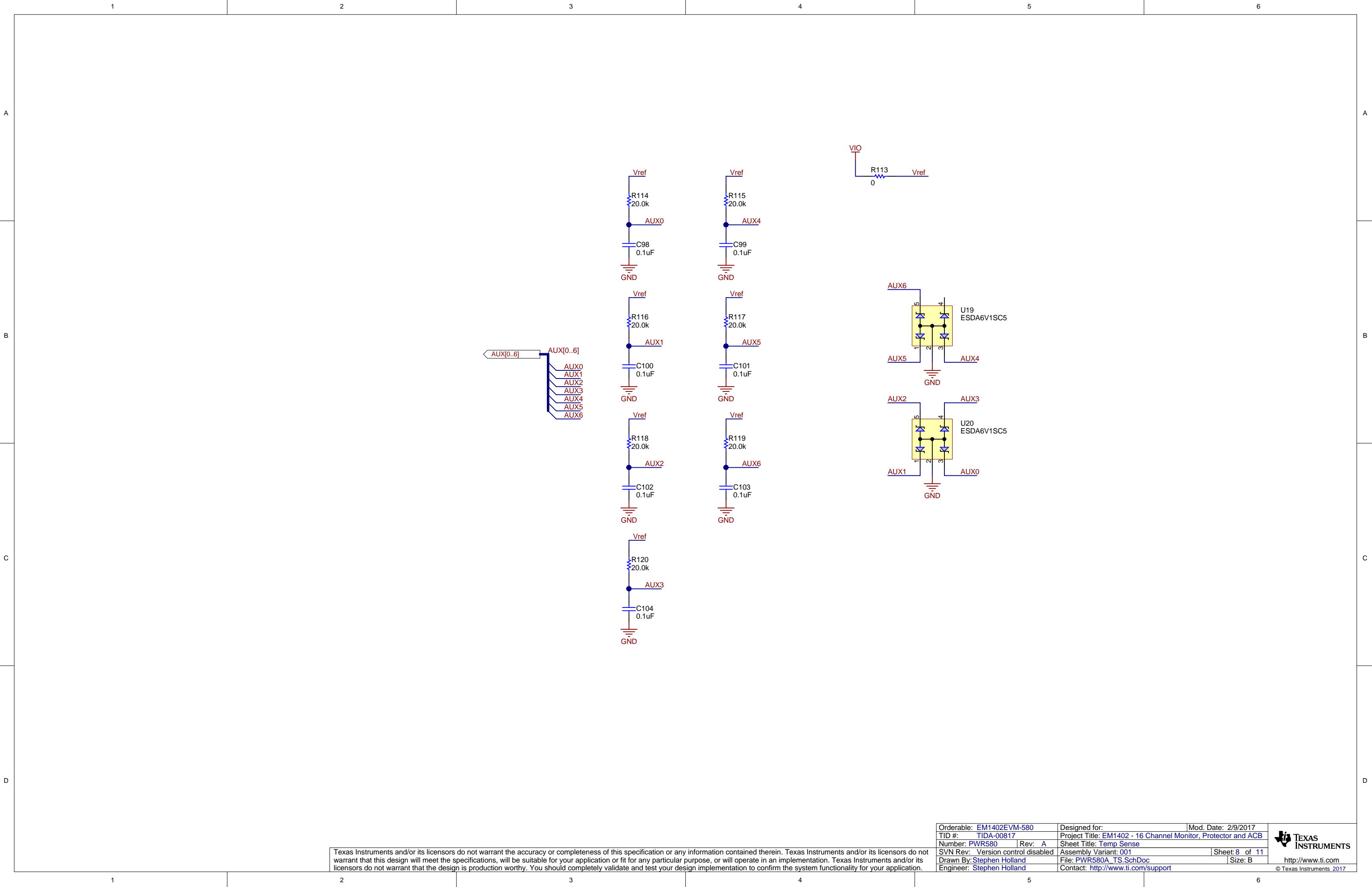
Orderable: EM1402EVM-580		Designed for:		Mod. Date: 2/9/2017	
TID #: TIDA-00817		Project Title: EM1402 - 16 Channel Monitor, Protector and ACB		Sheet Title: Mid switch matrix	
Number: PWR580		Rev: A		Assembly Variant: 001	
SVN Rev: Version control disabled		File: PWR580A_MID Stack.SchDoc		Size: B	
Drawn By: Stephen Holland		Contact: http://www.ti.com/support			
Engineer: Stephen Holland					





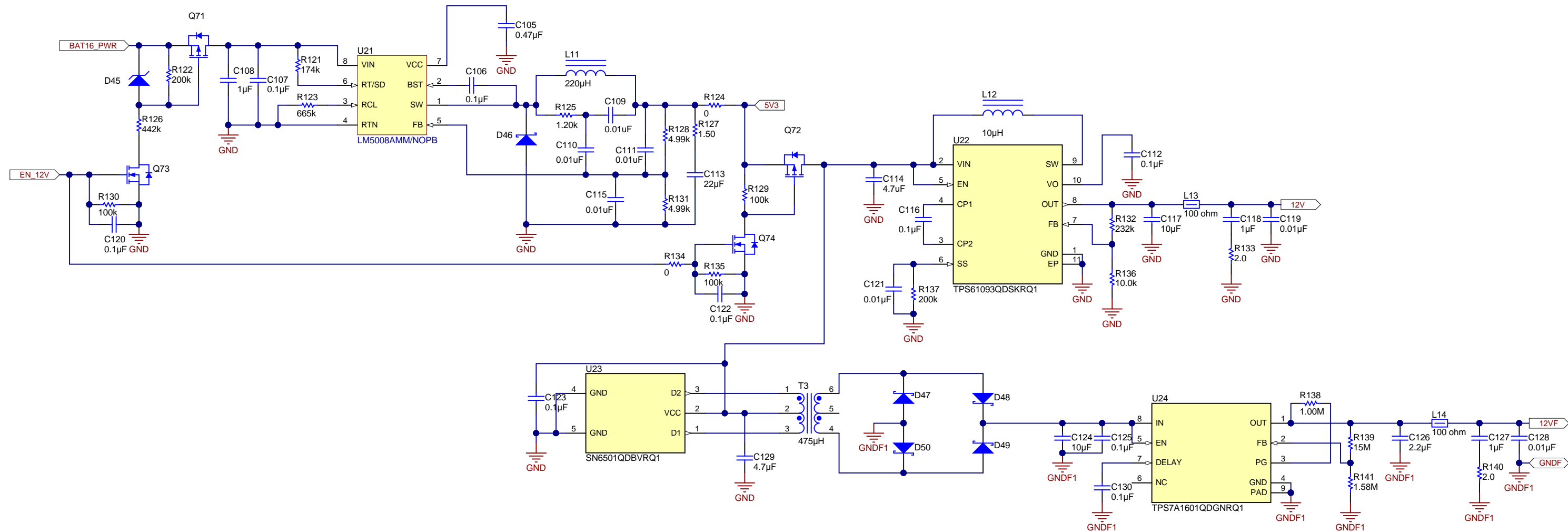
Texas Instruments and/or its licensors do not warrant the accuracy or completeness of this specification or any information contained therein. Texas Instruments and/or its licensors do not warrant that this design will meet the specifications, will be suitable for your application or fit for any particular purpose, or will operate in an implementation. Texas Instruments and/or its licensors do not warrant that the design is production worthy. You should completely validate and test your design implementation to confirm the system functionality for your application.

Orderable: EM1402EVM-580	Designed for:	Mod. Date: 2/9/2017
TID #: TIDA-00817	Project Title: EM1402 - 16 Channel Monitor, Protector and ACB	
Number: PWR580	Rev: A	Sheet Title: Converter (PWM controller)
SVN Rev: Version control disabled	Assembly Variant: 001	Sheet: 7 of 11
Drawn By: Stephen Holland	File: PWR580A_ACB_Isolated.SchDoc	Size: B
Engineer: Stephen Holland	Contact: http://www.ti.com/support	



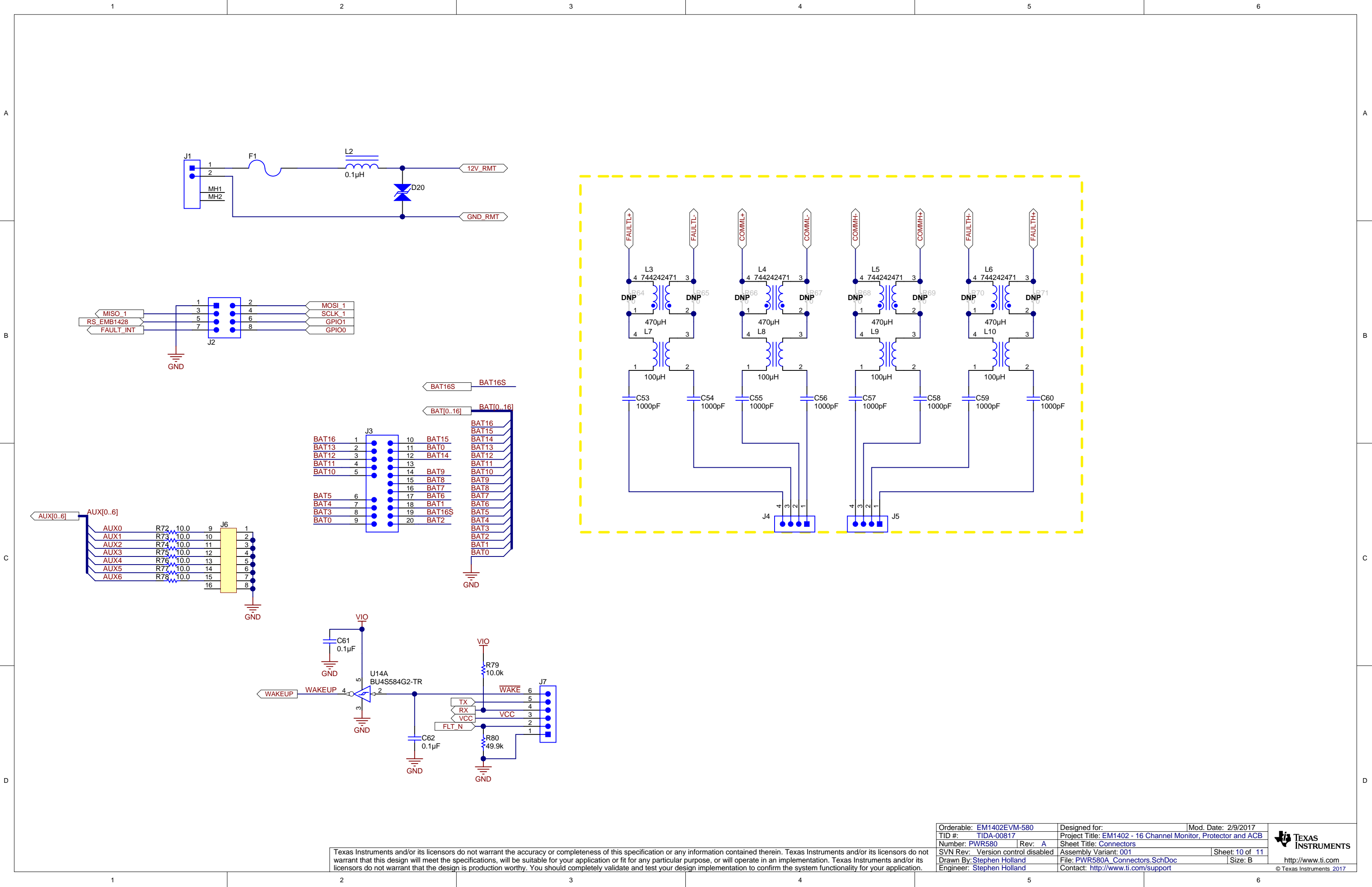
Texas Instruments and/or its licensors do not warrant the accuracy or completeness of this specification or any information contained therein. Texas Instruments and/or its licensors do not warrant that this design will meet the specifications, will be suitable for your application or fit for any particular purpose, or will operate in an implementation. Texas Instruments and/or its licensors do not warrant that the design is production worthy. You should completely validate and test your design implementation to confirm the system functionality for your application.

Orderable: EM1402EVM-580		Designed for:		Mod. Date: 2/9/2017	
TID #: TIDA-00817		Project Title: EM1402 - 16 Channel Monitor, Protector and ACB			
Number: PWR580		Rev: A		Sheet Title: Temp Sense	
SVN Rev: Version control disabled		Assembly Variant: 001		Sheet: 8 of 11	
Drawn By: Stephen Holland		File: PWR580A_TS.SchDoc		Size: B	
Engineer: Stephen Holland		Contact: http://www.ti.com/support			



Texas Instruments and/or its licensors do not warrant the accuracy or completeness of this specification or any information contained therein. Texas Instruments and/or its licensors do not warrant that this design will meet the specifications, will be suitable for your application or fit for any particular purpose, or will operate in an implementation. Texas Instruments and/or its licensors do not warrant that the design is production worthy. You should completely validate and test your design implementation to confirm the system functionality for your application.

Orderable: EM1402EVM-580	Designed for:	Mod. Date: 2/9/2017
TID #: TIDA-00817	Project Title: EM1402 - 16 Channel Monitor, Protector and ACB	
Number: PWR580	Rev: A	Sheet Title: Power Supplies
SVN Rev: Version control disabled	Assembly Variant: 001	Sheet: 9 of 11
Drawn By: Stephen Holland	File: PWR580A_VR_Buck_SN6501.SchDoc	Size: B
Engineer: Stephen Holland	Contact: http://www.ti.com/support	



Texas Instruments and/or its licensors do not warrant the accuracy or completeness of this specification or any information contained therein. Texas Instruments and/or its licensors do not warrant that this design will meet the specifications, will be suitable for your application or fit for any particular purpose, or will operate in an implementation. Texas Instruments and/or its licensors do not warrant that the design is production worthy. You should completely validate and test your design implementation to confirm the system functionality for your application.

Orderable: EM1402EVM-580	Designed for:	Mod. Date: 2/9/2017
TID #: TIDA-00817	Project Title: EM1402 - 16 Channel Monitor, Protector and ACB	
Number: PWR580	Rev: A	Sheet Title: Connectors
SVN Rev: Version control disabled	Assembly Variant: 001	Sheet: 10 of 11
Drawn By: Stephen Holland	File: PWR580A_Connectors.SchDoc	Size: B
Engineer: Stephen Holland	Contact: http://www.ti.com/support	

