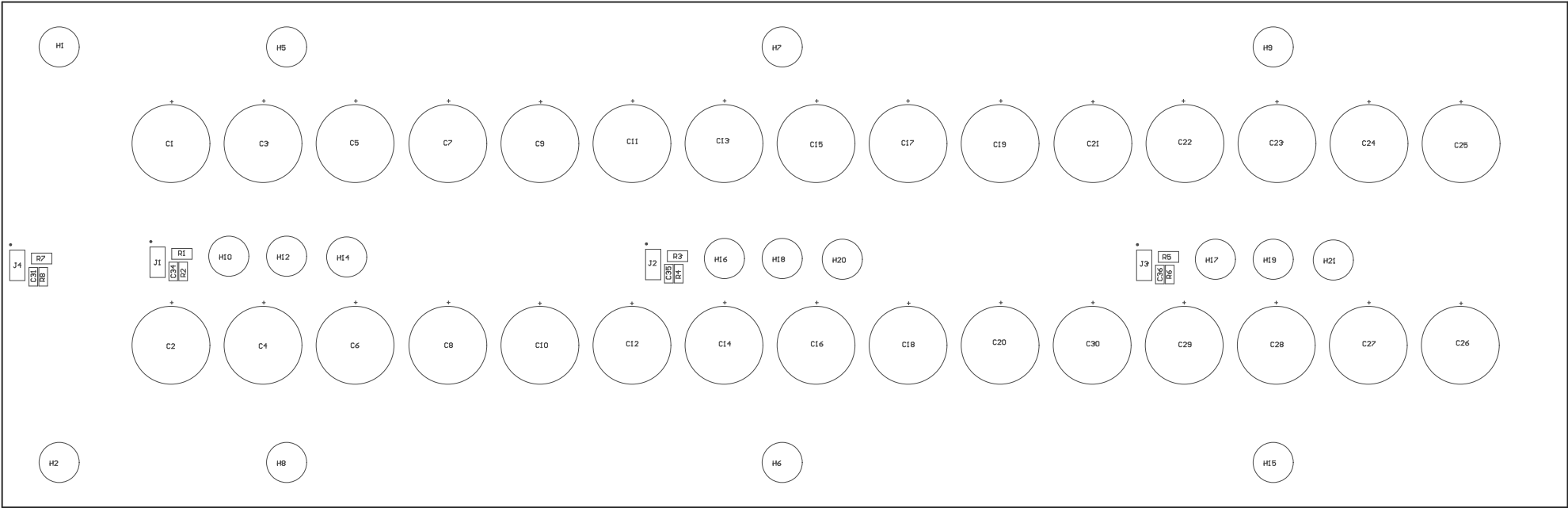
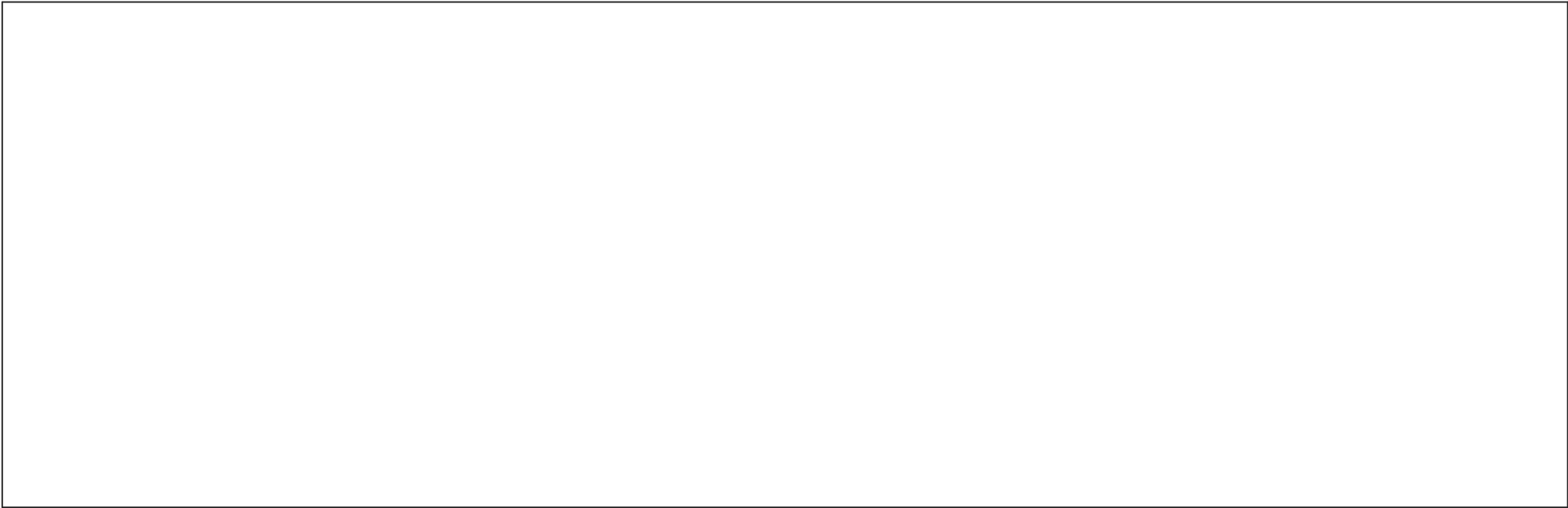


Z21 ■ These assemblies are ESD sensitive, ESD precautions shall be observed.
Z22 ■ These assemblies must be clean and free from flux and all contaminants. Use of no clean flux is not acceptable.
Z23 ■ These assemblies must comply with workmanship standards IPC-A-610 Class 2, unless otherwise specified.



COMPONENTS MARKED 'DNP' SHOULD NOT BE POPULATED.
ASSEMBLY VARIANT: 001

ALL ARTWORK VIEWED FROM TOP SIDE	BOARD #: T1D00364_CB	REV: E1	SUN REV: Not In VersionControl
LAYER NAME = M5 Assembly Top			
Top Assembly Drawing	GENERATED : 9/29/2016 7:14:07 PM	TEXAS INSTRUMENTS	



COMPONENTS MARKED 'DNP' SHOULD NOT BE POPULATED.
ASSEMBLY VARIANT: 001

PCB VIEWED FROM BOTTOM SIDE	BOARD #: TID000364_CB	REV: E1	SUN REV:
LAYER NAME = M6 Assembly Bottom	IGNORE ->		
PLOT NAME = Bottom Assembly Drawing	GENERATED : 9/29/2016	7:14:08 PM	