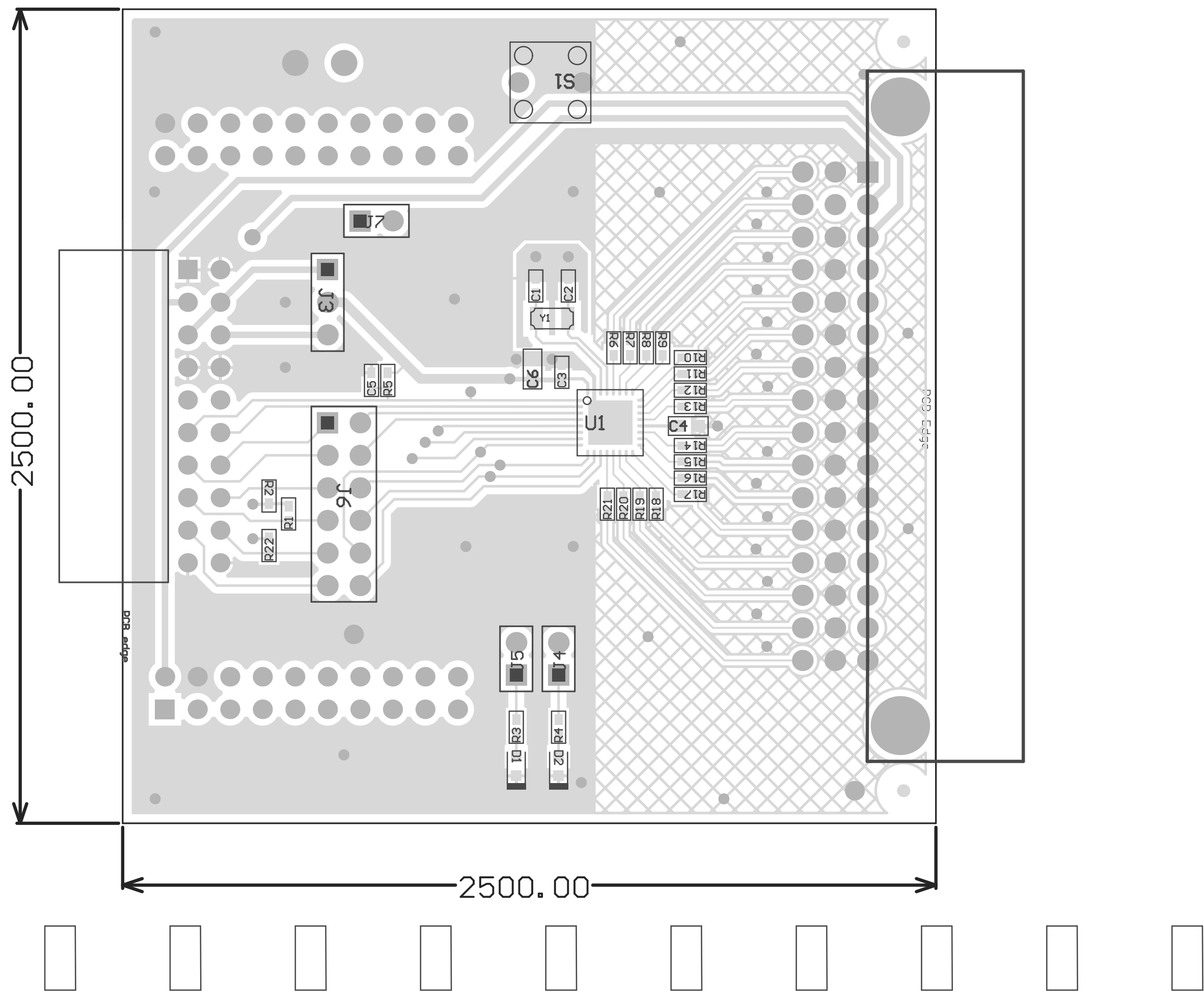
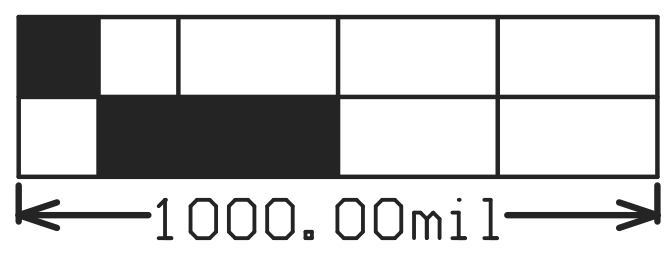
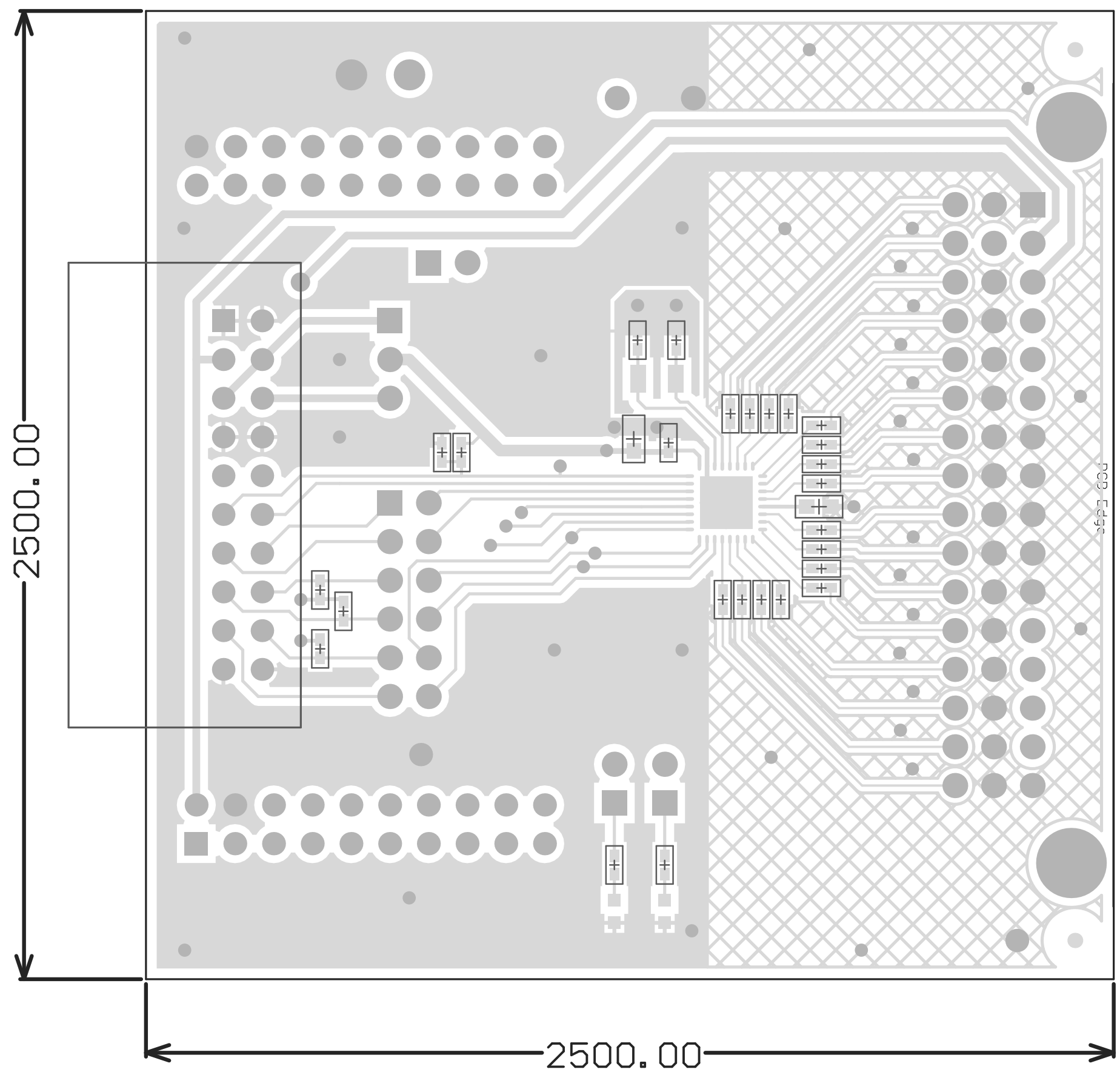


- Z21 ■ All Jumpers to be installed (Note: J3 jumper installed between 3.3V LDO and MCU VCC pins)
- Z22 ■ These assemblies are ESD sensitive, ESD precautions shall be observed.
- Z23 ■ These assemblies must be clean and free from flux and all contaminants. Use of no clean flux is not acceptable.
- Z24 ■ These assemblies must comply with workmanship standards IPC-A-610 Class 2, unless otherwise specified.

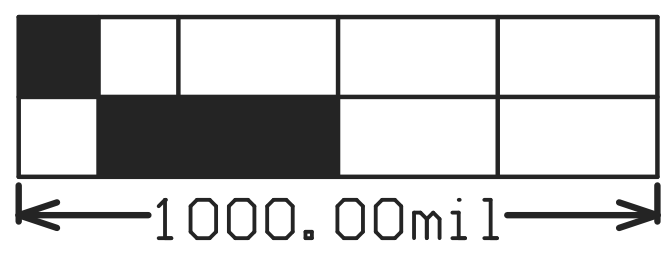
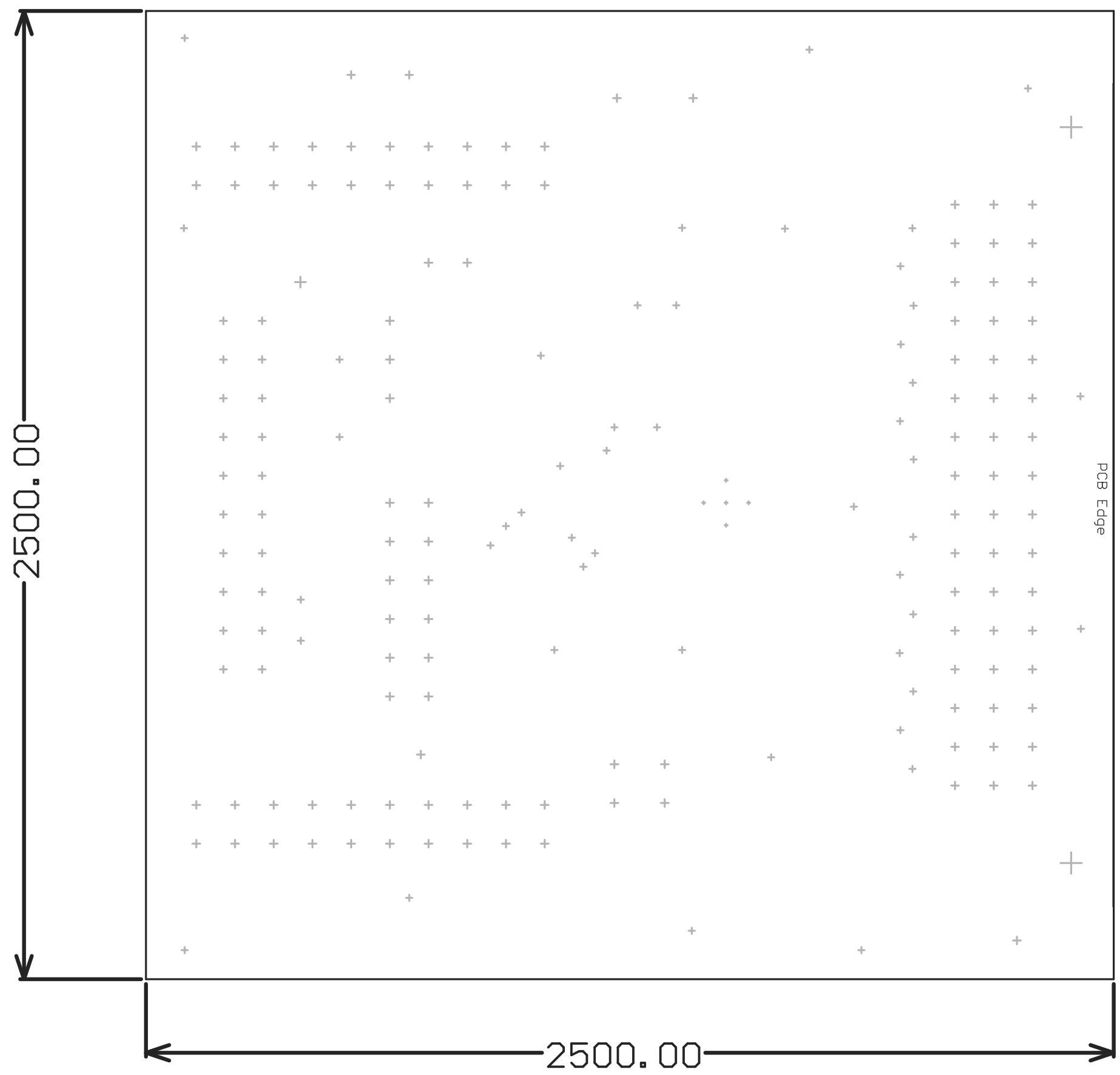


COMPONENTS MARKED 'DNP' SHOULD NOT BE POPULATED.  
ASSEMBLY VARIANT: [No Variations]

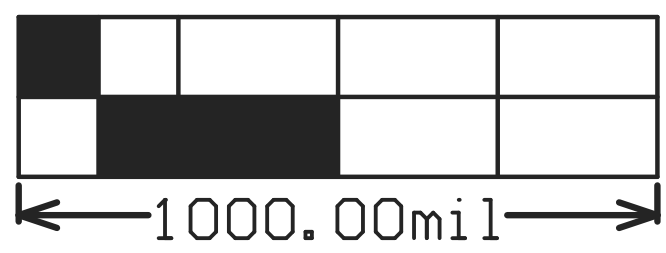
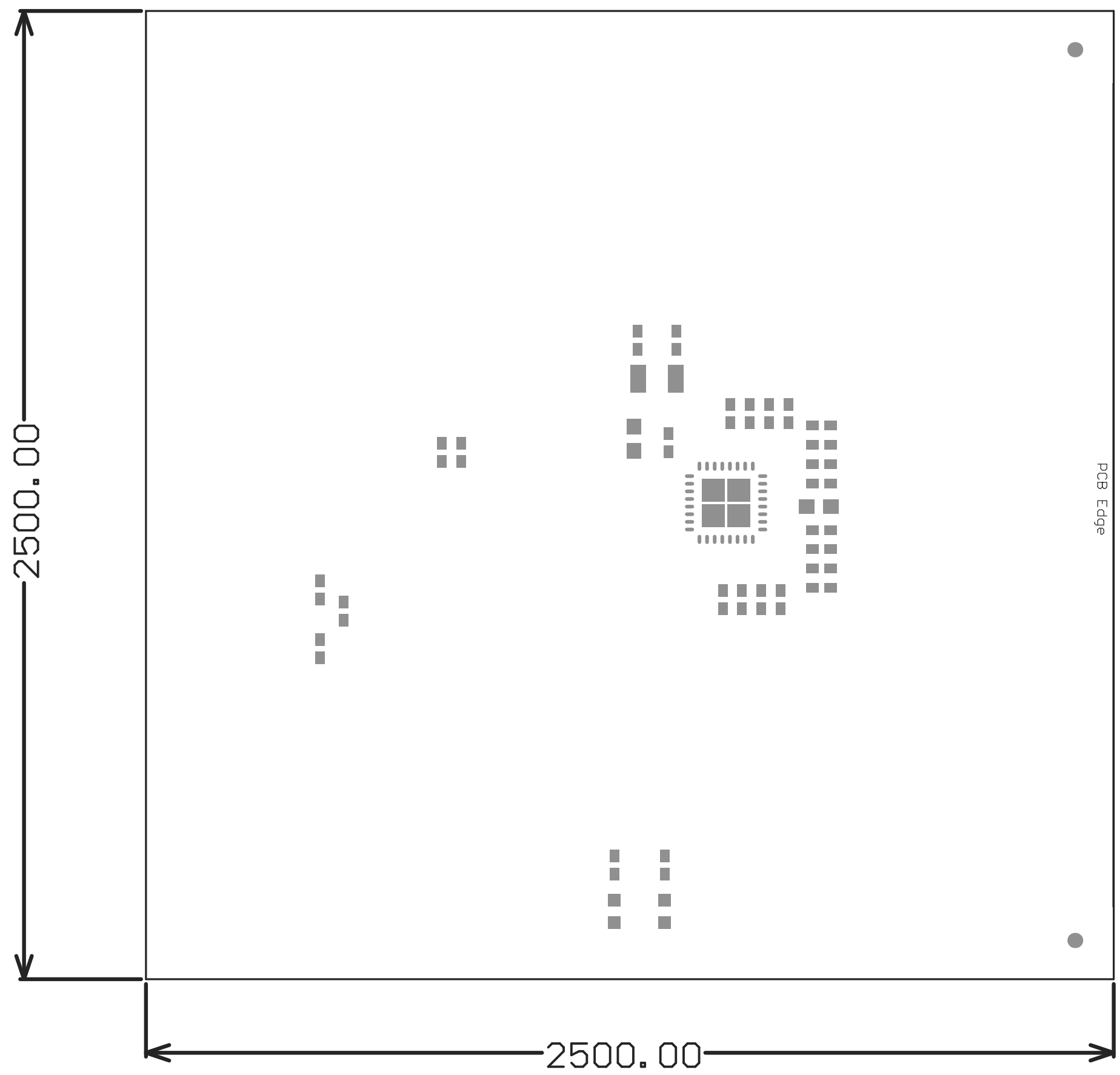
PCB VIEWED FROM TOP SIDE	BOARD #: CAPTIVATE-FR26321	REV: C	SUN REV: Not In VersionControl
M2 Board Dimensions			
PLOT NAME = TIDM-1CHP-DTECT-CO-Mechanical	GENERATED : 8/3/2016	8:19:16 AM	TEXAS INSTRUMENTS



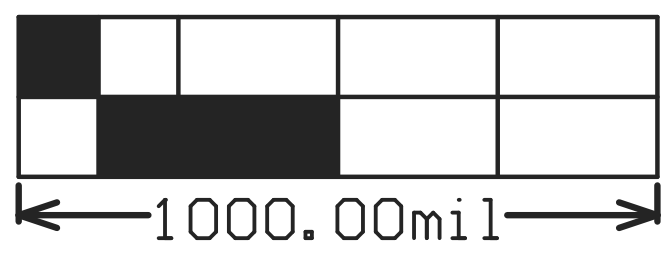
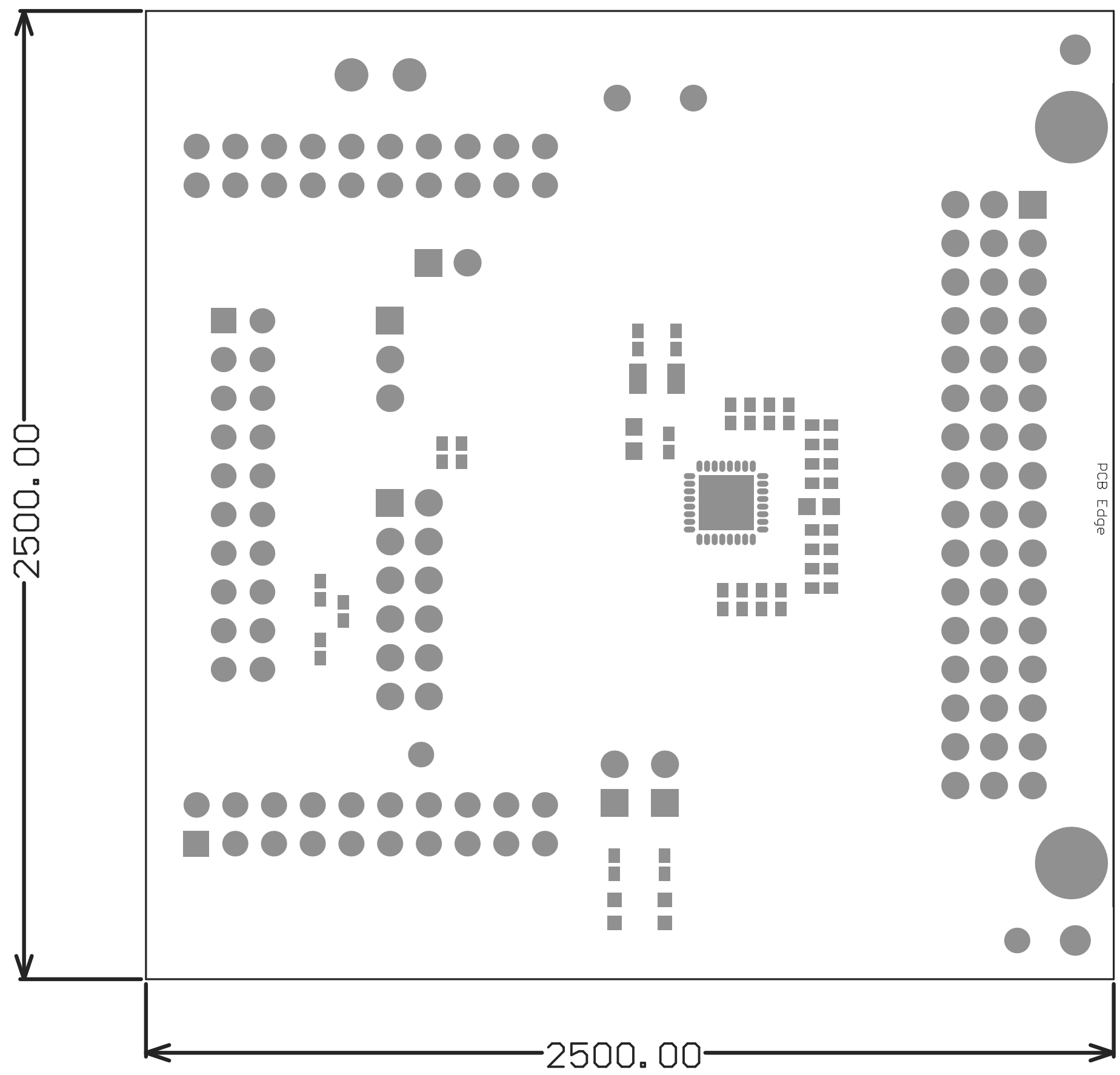
M25B Board Outline Top



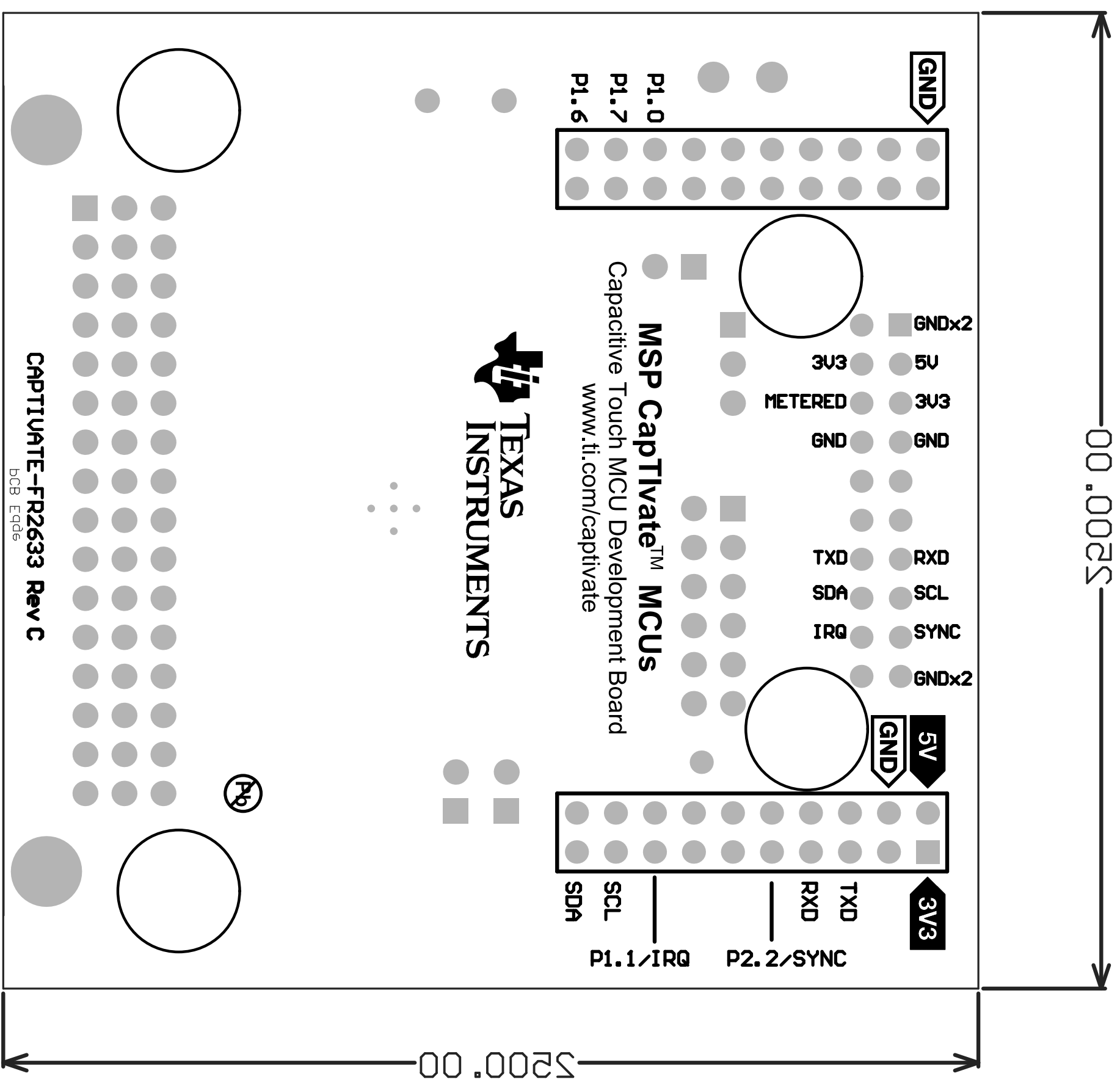
M2 Board Dimensions



M2 Board Dimensions



M2 Board Dimensions







PCB Dimensions

