

**High-Performance Analog Products**

# **Analog Applications Journal**

**Third Quarter, 2009**



## IMPORTANT NOTICE

Texas Instruments Incorporated and its subsidiaries (TI) reserve the right to make corrections, modifications, enhancements, improvements, and other changes to its products and services at any time and to discontinue any product or service without notice. Customers should obtain the latest relevant information before placing orders and should verify that such information is current and complete. All products are sold subject to TI's terms and conditions of sale supplied at the time of order acknowledgment.

TI warrants performance of its hardware products to the specifications applicable at the time of sale in accordance with TI's standard warranty. Testing and other quality control techniques are used to the extent TI deems necessary to support this warranty. Except where mandated by government requirements, testing of all parameters of each product is not necessarily performed.

TI assumes no liability for applications assistance or customer product design. Customers are responsible for their products and applications using TI components. To minimize the risks associated with customer products and applications, customers should provide adequate design and operating safeguards.

TI does not warrant or represent that any license, either express or implied, is granted under any TI patent right, copyright, mask work right, or other TI intellectual property right relating to any combination, machine, or process in which TI products or services are used. Information published by TI regarding third-party products or services does not constitute a license from TI to use such products or services or a warranty or endorsement thereof. Use of such information may require a license from a third party under the patents or other intellectual property of the third party, or a license from TI under the patents or other intellectual property of TI.

Reproduction of information in TI data books or data sheets is permissible only if reproduction is without alteration and is accompanied by all associated warranties, conditions, limitations, and notices. Reproduction of this information with alteration is an unfair and deceptive business practice. TI is not responsible or liable for such altered documentation. Information of third parties may be subject to additional restrictions.

Resale of TI products or services with statements different from or beyond the parameters stated by TI for that product or service voids all express and any implied warranties for the associated TI product or service and is an unfair and deceptive business practice. TI is not responsible or liable for any such statements.

TI products are not authorized for use in safety-critical applications (such as life support) where a failure of the TI product would reasonably be expected to cause severe personal injury or death, unless officers of the parties have executed an agreement specifically governing such use. Buyers represent that they have all necessary expertise in the safety and regulatory ramifications of their applications, and acknowledge and agree that they are solely responsible for all legal, regulatory and safety-related requirements concerning their products and any use of TI products in such safety-critical applications, notwithstanding any applications-related information or support that may be provided by TI. Further, Buyers must fully indemnify TI and its representatives against any damages arising out of the use of TI products in such safety-critical applications.

TI products are neither designed nor intended for use in military/aerospace applications or environments unless the TI products are specifically designated by TI as military-grade or "enhanced plastic." Only products designated by TI as military-grade meet military specifications. Buyers acknowledge and agree that any such use of TI products which TI has not designated as military-grade is solely at the Buyer's risk, and that they are solely responsible for compliance with all legal and regulatory requirements in connection with such use.

TI products are neither designed nor intended for use in automotive applications or environments unless the specific TI products are designated by TI as compliant with ISO/TS 16949 requirements. Buyers acknowledge and agree that, if they use any non-designated products in automotive applications, TI will not be responsible for any failure to meet such requirements.

Following are URLs where you can obtain information on other Texas Instruments products and application solutions:

### Products

Amplifiers	<a href="http://amplifier.ti.com">amplifier.ti.com</a>
Data Converters	<a href="http://dataconverter.ti.com">dataconverter.ti.com</a>
DLP® Products	<a href="http://www.dlp.com">www.dlp.com</a>
DSP	<a href="http://dsp.ti.com">dsp.ti.com</a>
Clocks and Timers	<a href="http://www.ti.com/clocks">www.ti.com/clocks</a>
Interface	<a href="http://interface.ti.com">interface.ti.com</a>
Logic	<a href="http://logic.ti.com">logic.ti.com</a>
Power Mgmt	<a href="http://power.ti.com">power.ti.com</a>
Microcontrollers	<a href="http://microcontroller.ti.com">microcontroller.ti.com</a>
RFID	<a href="http://www.ti-rfid.com">www.ti-rfid.com</a>
RF/IF and ZigBee® Solutions	<a href="http://www.ti.com/lprf">www.ti.com/lprf</a>

### Applications

Audio	<a href="http://www.ti.com/audio">www.ti.com/audio</a>
Automotive	<a href="http://www.ti.com/automotive">www.ti.com/automotive</a>
Broadband	<a href="http://www.ti.com/broadband">www.ti.com/broadband</a>
Digital Control	<a href="http://www.ti.com/digitalcontrol">www.ti.com/digitalcontrol</a>
Medical	<a href="http://www.ti.com/medical">www.ti.com/medical</a>
Military	<a href="http://www.ti.com/military">www.ti.com/military</a>
Optical Networking	<a href="http://www.ti.com/opticalnetwork">www.ti.com/opticalnetwork</a>
Security	<a href="http://www.ti.com/security">www.ti.com/security</a>
Telephony	<a href="http://www.ti.com/telephony">www.ti.com/telephony</a>
Video & Imaging	<a href="http://www.ti.com/video">www.ti.com/video</a>
Wireless	<a href="http://www.ti.com/wireless">www.ti.com/wireless</a>

Mailing Address: Texas Instruments  
Post Office Box 655303  
Dallas, Texas 75265

# Contents

<b>Introduction</b> .....	4
<b>Data Acquisition</b>	
Impact of sampling-clock spurs on ADC performance. ....	5
The performance of high-speed data converters can degrade if the quality of the sampling clock is not well controlled. This article begins with a discussion of sampling theory followed by test and measurement techniques to estimate SNR degradation that can be caused by sampling-clock spurs. A practical example is included to show the full effect of clock spurs in a real-world design.	
How the voltage reference affects ADC performance, Part 2 .....	13
This is the second part of a three-part series that investigates the design and performance of a voltage-referenced system for SAR ADCs. This article looks at the key characteristics of two configurations of voltage-reference circuits and explores filtering techniques that can reduce reference noise and improve ADC performance.	
<b>Power Management</b>	
Reducing radiated EMI in WLED drivers. ....	17
Portable displays that require white-LED (WLED) backlights are steadily increasing in size, which means the backlight drivers must deliver more power. These drivers often use inductive switching converters that generate radiated EMI that is directly proportional to the power required from the drivers. This article describes several factors in the design process, from driver-IC and component selection to board layout, that contribute to EMI and that can be modified to reduce it.	
<b>Amplifiers: Op Amps</b>	
Using fully differential op amps as attenuators, Part 2: Single-ended bipolar input signals .....	21
This article, Part 2 of a three-part series, shows how to adapt the circuits presented in Part 1 to a high-voltage, single-ended bipolar input. The analysis includes two approaches to using a fully differential op amp (FDA) to attenuate and level-shift single-ended bipolar signals to the lower input range required by an ADC. Spreadsheet calculation tools are provided along with TINA-TI™ SPICE models to show how to implement the design methodology.	
Interfacing op amps to high-speed DACs, Part 1: Current-sinking DACs .....	24
This article, Part 1 of a three-part series, discusses the interface between a current-sinking DAC and an op amp. Along with an overview of a complementary-current-steering DAC and the architecture of current-sinking DACs, this article shows how to use a single-stage op amp to convert complementary-current outputs from a current-sinking DAC to a single-ended voltage. Spreadsheet calculation tools are provided along with TINA-TI SPICE models to show how to implement the design methodology.	
Using the infinite-gain, MFB filter topology in fully differential active filters .....	33
Filter topologies like the Sallen-Key and the infinite-gain, multiple-feedback (MFB) filters are popular because they require only one op amp per second-order stage. Since fully differential configurations of these filters are not always included in handbooks and software tools, this article describes how to use FilterPro™ to transform a single-ended-input/output filter into a fully differential filter. Also discussed are filter configurations with differential inputs and a single-ended output, along with other practical considerations for designing active filters.	
<b>Index of Articles</b> .....	39
<b>TI Worldwide Technical Support</b> .....	44

**To view past issues of the**  
***Analog Applications Journal*, visit the Web site**  
**[www.ti.com/aaj](http://www.ti.com/aaj)**

# Introduction

*Analog Applications Journal* is a collection of analog application articles designed to give readers a basic understanding of TI products and to provide simple but practical examples for typical applications. Written not only for design engineers but also for engineering managers, technicians, system designers and marketing and sales personnel, the book emphasizes general application concepts over lengthy mathematical analyses.

These applications are not intended as “how-to” instructions for specific circuits but as examples of how devices could be used to solve specific design requirements. Readers will find tutorial information as well as practical engineering solutions on components from the following categories:

- Data Acquisition
- Power Management
- Amplifiers: Op Amps

Where applicable, readers will also find software routines and program structures. Finally, *Analog Applications Journal* includes helpful hints and rules of thumb to guide readers in preparing for their design.

# Impact of sampling-clock spurs on ADC performance

By Thomas Neu

Analog Field Applications Engineer

## Introduction

As modern, high-speed analog-to-digital converters (ADCs) push the spurious-free dynamic range (SFDR) beyond the 100-dB barrier, the demand for a high-quality sampling clock has become greater than ever. Traditionally, system engineers focused mainly on the clock quality when they were trading off the signal-to-noise ratio (SNR) against the input-signal frequency in under-sampling applications. As tougher system requirements such as multicarrier GSM emerge and are starting to demand dynamic ranges in excess of 80 dB over a wide bandwidth, system designers try to eliminate any possible SFDR degradation, such as the spur feedthrough from a distorted sampling clock.

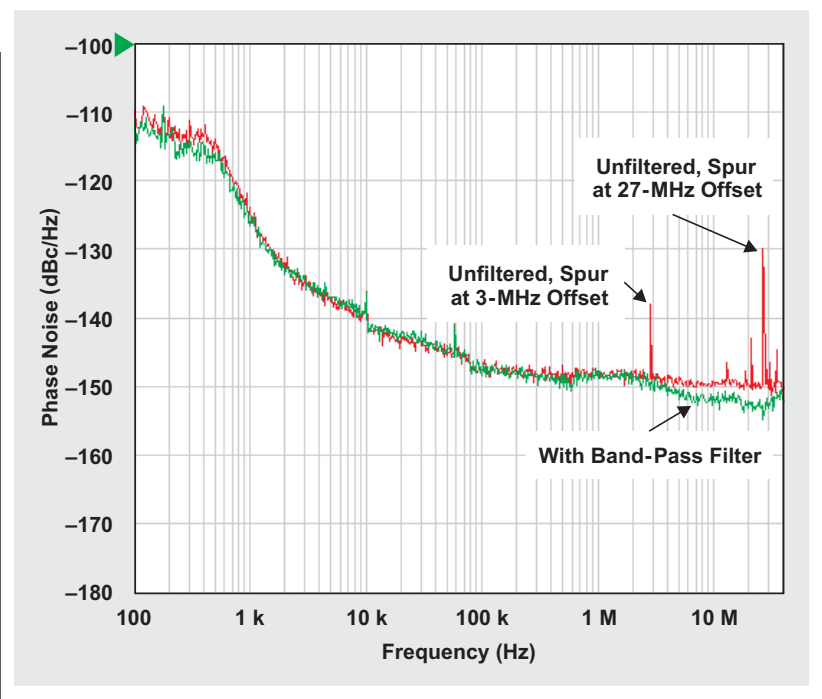
Spurs on the sampling clock as low as -90 dBc can significantly impact the SFDR of the data converter. These low-level spurs can be very difficult to track down because they can have a variety of different origins. They can be generated from crosstalk with an adjacent digital circuit that occurs due to layout constraints, or they can occur simply because the clock source is not properly filtered. An example of improper filtering is shown in Figure 1, which compares two LVDS outputs of the Texas Instruments (TI) CDCE72010, one unfiltered and one with a band-pass filter. The spur reduction of the filtered output is clearly visible.

This article will discuss how spurs on the sampling clock get translated into the output spectrum of the data converter. It will also investigate how the spur amplitude changes with different input frequencies. More and more system designers are moving to an undersampling architecture, and the spur amplitude is highly dependent upon input frequency, as will be shown later. This article will also show how to estimate the SNR degradation caused by the sampling-clock spurs.

## Sampling theory

The spurs that result from sampling a data converter with a distorted clock are best described by the relationship of their frequency and amplitude components to the same

**Figure 1. Phase noise of CDCE72010's filtered and unfiltered LVDS outputs**



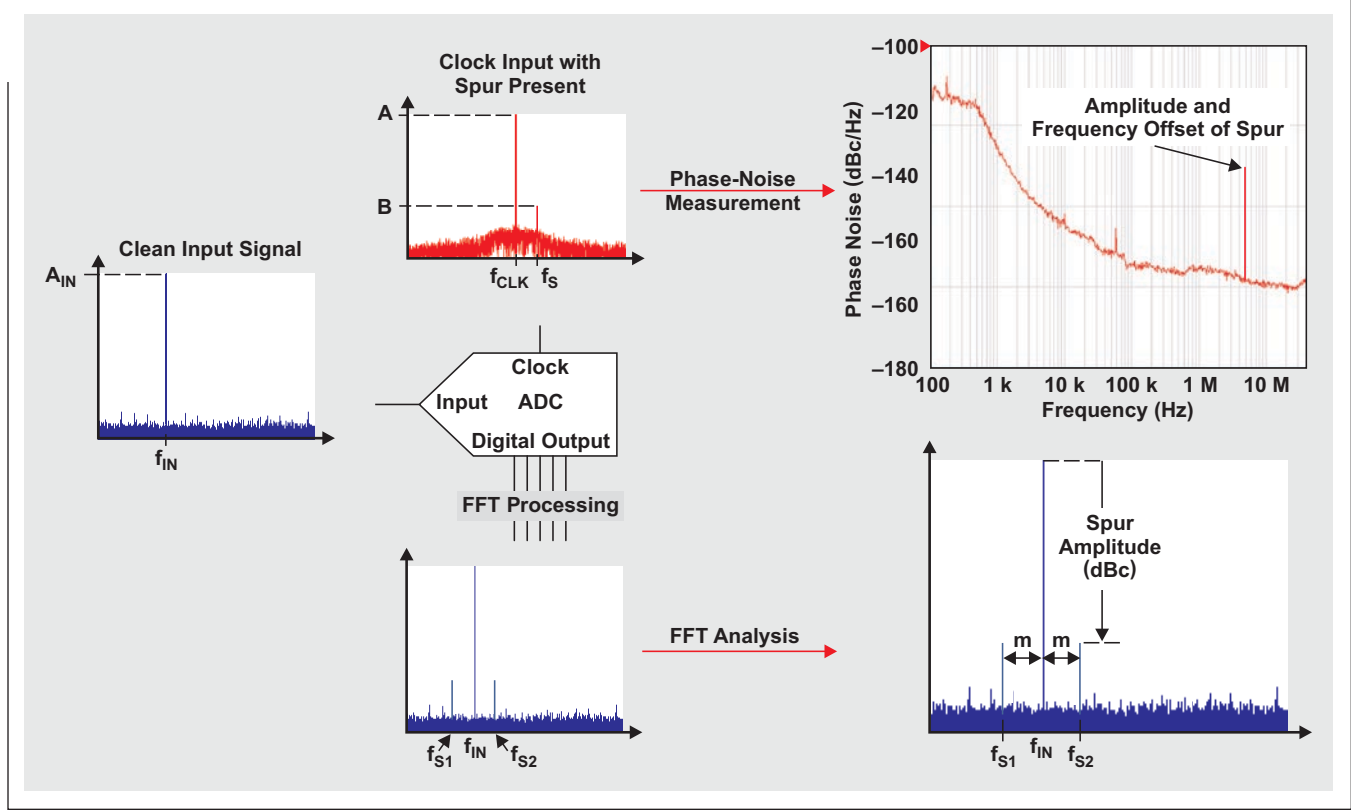
components of the sampled input signal. In order to derive that relationship, one has to start with the basic sampling theory. Let's consider the setup shown in Figure 2, where the input signal is

$$x(t) = A_{IN} \times \sin(\omega_{IN}t),$$

and the clock input with a spurious component is

$$y(t) = A \times \sin(\omega_{CLK}t) + B \times \sin(\omega_{St}).$$

The quality of the sampling clock can easily be evaluated with a phase-noise analyzer. It displays the clock's phase noise versus frequency offset from the carrier, which is very helpful when the clock jitter is calculated to determine the SNR of the receiver. The phase-noise plot displays any spurious component on the clock signal, referencing its frequency offset and spur amplitude,  $S_x$ , to the main signal. If the amplitude is normalized in dBc/Hz, care must be

**Figure 2. Setup with input signal, clock, and clock spur**

taken to extract it with the resolution bandwidth of the instrument in that measurement:

$$\text{Amplitude (dBc)} = S_X \text{ (dBc/Hz)} + 10\log(\text{Resolution Bandwidth})$$

Due to the presence of the spur, the original sampling instant, or zero crossing of the clock, has shifted slightly by  $\Delta T$ . Now the sampling instant,  $y(t) = 0$ , can be solved for:

$$y(t) = A \times \sin[\omega_{\text{CLK}}(t + \Delta T)] + B \times \sin[\omega_S(t + \Delta T)] = 0$$

$$y(t) = A \times \sin(\omega_{\text{CLK}}t) \times \cos(\omega_{\text{CLK}}\Delta T) + A \times \cos(\omega_{\text{CLK}}t) \times \sin(\omega_{\text{CLK}}\Delta T) + B \times \sin(\omega_S t) \times \cos(\omega_S \Delta T) + B \times \cos(\omega_S t) \times \sin(\omega_S \Delta T) = 0$$

$$\text{Assuming that } B \ll A \text{ and } \Delta T \approx 0 \text{ results in: } \begin{aligned} \cos(\omega_{\text{CLK}}\Delta T) &\approx 1 & \sin(\omega_{\text{CLK}}\Delta T) &\approx \omega_{\text{CLK}}\Delta T \\ \cos(\omega_S \Delta T) &\approx 1 & \sin(\omega_S \Delta T) &\approx \omega_S \Delta T \end{aligned}$$

$$\text{The ideal sampling instant is } t = 0, \text{ hence: } \begin{aligned} \sin(\omega_{\text{CLK}}t) &= 0 & \cos(\omega_{\text{CLK}}t) &= 1 & \cos(\omega_S t) &= 1 \end{aligned}$$

Substituting these results into  $y(t) = 0$  produces:

$$y(t) = A \times \underbrace{\sin(\omega_{\text{CLK}}t)}_0 \times \underbrace{\cos(\omega_{\text{CLK}}\Delta T)}_1 + A \times \underbrace{\cos(\omega_{\text{CLK}}t)}_1 \times \underbrace{\sin(\omega_{\text{CLK}}\Delta T)}_{\omega_{\text{CLK}}\Delta T} + B \times \underbrace{\sin(\omega_S t)}_1 \times \underbrace{\cos(\omega_S \Delta T)}_1 + B \times \underbrace{\cos(\omega_S t)}_1 \times \underbrace{\sin(\omega_S \Delta T)}_{\omega_S \Delta T} = 0$$

$$y(t) = A \times \omega_{\text{CLK}}\Delta T + B \times \sin(\omega_S t) + B \times \omega_S \Delta T = 0$$

$$\text{Then } \Delta T \text{ can be solved for: } \Delta T = -\frac{B \times \sin(\omega_S t)}{A \times \omega_{\text{CLK}} + B \times \omega_S}. \text{ Assuming that } A \gg B \text{ results in } \Delta T = -\frac{B \times \sin(\omega_S t)}{A \times \omega_{\text{CLK}}}.$$

Next, the input signal,  $x(t) = A_{\text{IN}} \times \sin(\omega_{\text{IN}}t)$ , is sampled at the zero crossing,  $t + \Delta T$ , of the non-ideal clock:

$$x(t) = A_{\text{IN}} \times \sin(\omega_{\text{IN}}t) = A_{\text{IN}} \times \sin[\omega_{\text{IN}}(t + \Delta T)] = A_{\text{IN}} \times \sin(\omega_{\text{IN}}t) \times \underbrace{\cos(\omega_{\text{IN}}\Delta T)}_1 + A_{\text{IN}} \times \cos(\omega_{\text{IN}}t) \times \underbrace{\sin(\omega_{\text{IN}}\Delta T)}_{\omega_{\text{IN}}\Delta T}$$

This results in  $x(t) = \underbrace{A_{IN} \times \sin(\omega_{IN}t)}_{\text{Ideal Sample}} + \underbrace{A_{IN} \times \cos(\omega_{IN}t) \times \omega_{IN} \Delta T}_{\text{Error Sample}}$ .

Focusing on the error sample and substituting  $\Delta T$  produces:

$$x(t) = A_{IN} \times \omega_{IN} \times \frac{-B \times \sin(\omega_S t)}{A \times \omega_{CLK}} \cos(\omega_{IN} t) = A_{IN} \times \omega_{IN} \times \underbrace{\frac{B}{A \times \omega_{CLK}}}_{\text{Scale Factor of Spur Amplitude}} \times \underbrace{\frac{1}{2} \{ \sin[(-\omega_S + \omega_{IN}) \times t] + \sin[(-\omega_S - \omega_{IN}) \times t] \}}_{\text{Two Frequency Products: } -\omega_S + \omega_{IN} \text{ and } -\omega_S - \omega_{IN}}$$

Therefore, it can be observed that each spurious component of the sampling clock generates two spurs, S1 and S2, in the data converter with amplitude and frequencies relative to the input signal as follows.

$$\begin{aligned} \text{S1 and S2 amplitude: } \frac{B}{A} \times \frac{\omega_{IN}}{2 \times \omega_{CLK}} &= \frac{B}{A} \times \frac{f_{IN}}{2 \times f_{CLK}} \text{ or, in terms of decibels,} \\ &= B - A + 20 \log \left( \frac{f_{IN}}{2 \times f_{CLK}} \right). \end{aligned}$$

$$\begin{aligned} \text{S1 and S2 frequencies: } f_{S1} &= -f_S - f_{IN} \\ f_{S2} &= -f_S + f_{IN} \end{aligned}$$

The resulting spurs can be shifted by one clock period,  $2\pi/T = f_{CLK}$ , and considering  $f_S - f_{CLK} = m$  yields:

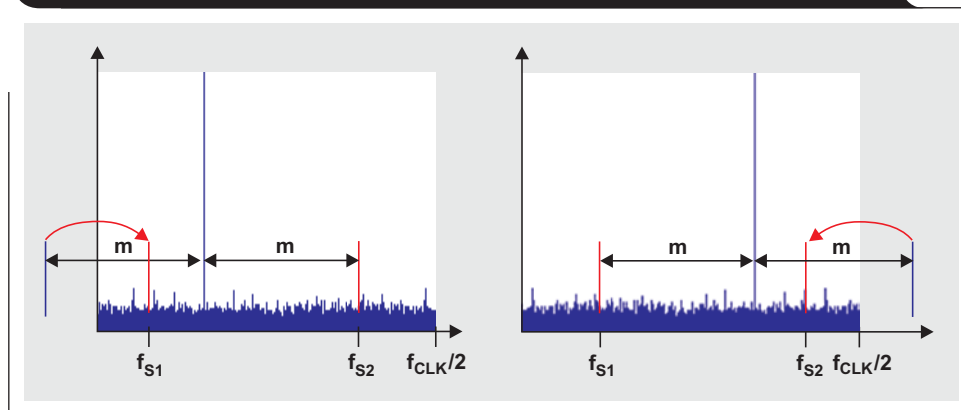
$$f_{S1} = -f_S - f_{IN} + f_{CLK} = -f_{IN} + f_{CLK} - f_S = -(f_{IN} - f_{CLK} + f_S) = -(f_{IN} + m) = f_{IN} + m$$

$$f_{S2} = -f_S + f_{IN} + f_{CLK} = +f_{IN} + f_{CLK} - f_S = f_{IN} - m$$

These equations show that the frequencies of the generated spurs will be centered around the input signal and offset by the distance  $m$ , which is the difference between the clock frequency and the clock-spur frequency. The amplitude of the generated spurs, on the other hand, is highly dependent upon the input frequency. For every doubling of the input frequency (e.g.,  $f_{IN} = 20$  MHz versus  $f_{IN} = 10$  MHz), the spur amplitude increases by 6 dB! Hence, as system designers consider sampling in higher Nyquist zones, this relationship becomes very important to them.

Sometimes the fast Fourier transform (FFT) plot can be a bit misleading when one is trying to trace spurs back to their origins. If the clock spur is relatively far from the clock frequency, the generated spurs of the ADC can get pushed outside the plot's boundaries—either to negative frequencies or beyond  $f_{CLK}/2$ . The spurs then alias back in-band and generate an asymmetric FFT plot, as demonstrated in Figure 3.

**Figure 3. Spurs pushed outside the FFT band and aliased back in-band**



## Measurements

To further demonstrate the impact of the spur's frequency and amplitude, the following experiment was set up (see Figure 4). A low-jitter-signal generator was used to provide a sine-wave input signal to TI's ADS5463 evaluation module (EVM). The ADC input was sampled with a 122.88-MHz clock, and a power combiner and third signal generator were used to mix a spur into the clock's frequency. This way the frequency and amplitude of the spur could easily be adjusted. The spur's amplitude and frequency were verified with a phase-noise analyzer.

For the first experiment, the spur generator was set up to output a tone with a frequency of 102 MHz and an amplitude of -30 dBm. The power combiner reduced the clock and spur signals by about 3 dB. The phase-noise analyzer showed the amplitudes of the clock and spur at -9 dBm and about -33 dBm, respectively, with an offset (m) of about 20.9 MHz (122.88 MHz - 102 MHz) as illustrated in the screen capture in Figure 5. As previously derived, this setup generated two spurs with a spur-amplitude scale factor of

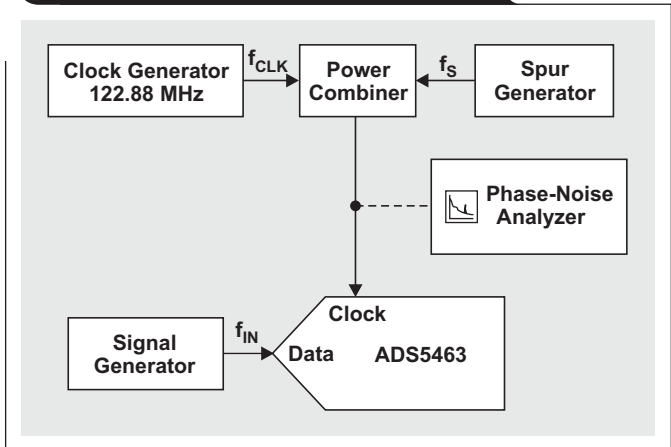
$$B - A + 20 \log \left( \frac{f_{IN}}{2 \times f_{CLK}} \right) = -33 \text{ dBm} - (-9 \text{ dBm}) + 20 \log \left( \frac{10 \text{ MHz}}{2 \times 122.88 \text{ MHz}} \right) = -51.8 \text{ dBc}$$

and spur frequencies of

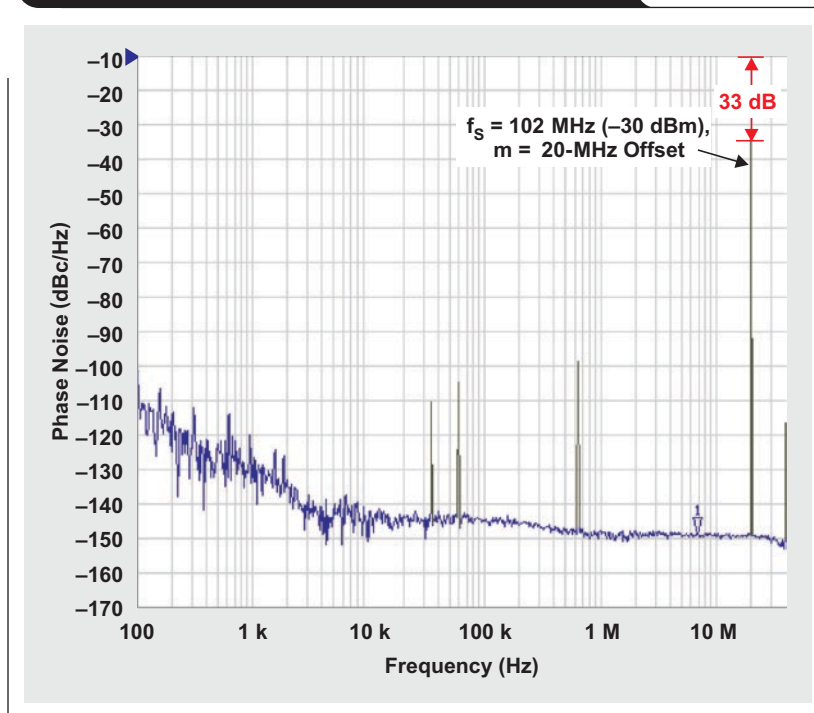
$$f_{S1} = f_{IN} + m = 10 \text{ MHz} + 20.9 \text{ MHz} = 30.9 \text{ MHz} \text{ and}$$

$$f_{S2} = f_{IN} - m = 10 \text{ MHz} - 20.9 \text{ MHz} = -10.9 \text{ MHz}.$$

**Figure 4. Test setup to mix a spur and clock signal**



**Figure 5. Phase-noise plot of 102-MHz spur with -33-dBm amplitude**





The resulting FFT plot of the ADS5463 output is shown in Figure 6. The generated spurs are about 52 dB lower than the input signal and are located at 10.9 and 30.9 MHz. This matches the calculated values very closely.

Next, the spur amplitude was lowered from -30 dBm to -40 dBm. It was expected that the S1 and S2 spur amplitudes would drop by 10 dB as well. This was confirmed with the FFT plot of the ADS5463 output, as illustrated in Figure 7. The frequencies of the spurs stayed the same.

As discussed previously, the spur amplitude is highly dependent upon the frequency of the input signal. To further illustrate this, the frequency of the input signal was increased from 10 MHz to 100 MHz. This changed the spur-amplitude scale factor to

$$B - A + 20\log\left(\frac{f_{IN}}{2 \times f_{CLK}}\right) = -33 \text{ dBm} - (-9 \text{ dBm}) + 20\log\left(\frac{100 \text{ MHz}}{2 \times 122.88 \text{ MHz}}\right) = -24 - 7.8 = -31.8 \text{ dBc}$$

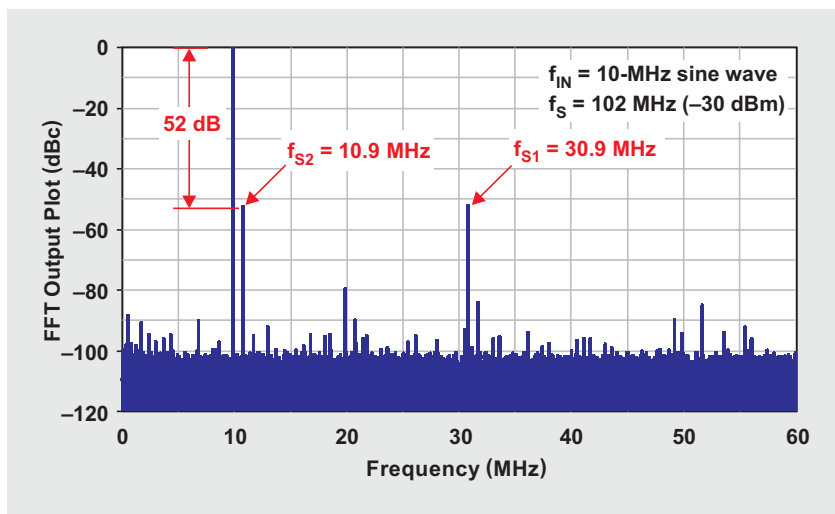
and the frequencies of the two spurs to  $f_{S1} = -f_S + f_{IN} = -102 \text{ MHz} + 100 \text{ MHz} = -2 \text{ MHz}$  and

$$f_{S2} = -f_S - f_{IN} = -102 \text{ MHz} - 100 \text{ MHz} = -202 \text{ MHz}.$$

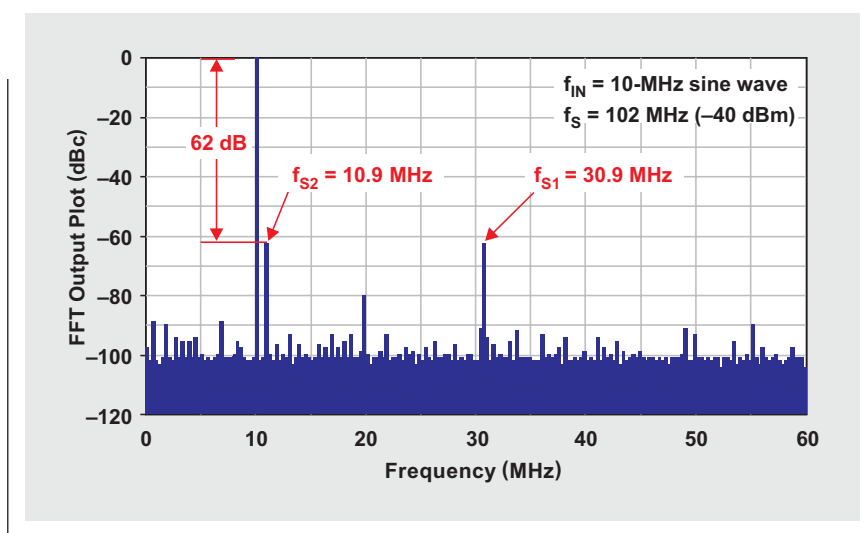
Aliasing them back in-band generated two spurs,  $f_{S1} = -2 \text{ MHz} = +2 \text{ MHz}$  and

$$f_{S2} = -202 \text{ MHz} + (2 \times 122.88 \text{ MHz}) = 43.8 \text{ MHz}.$$

**Figure 6. FFT output of 102-MHz, -30-dBm clock spur**



**Figure 7. FFT output of 102-MHz, -40-dBm clock spur**



This was also confirmed with the FFT plot of the ADS5463 output (see Figure 8).

For the last experiment, a comparison of spur frequencies was made with the clock frequency set at 102 MHz and at 132 MHz. The spur amplitude was set to -30 dBm, and the input signal was set to 10 MHz. These settings caused the spur-frequency offset (m) to change from about 20.9 MHz to about 9.1 MHz, respectively. Two new spur frequencies resulted:

$$f_{S1} = f_{IN} + m = 10 \text{ MHz} + 9.1 \text{ MHz} = 19.1 \text{ MHz}$$

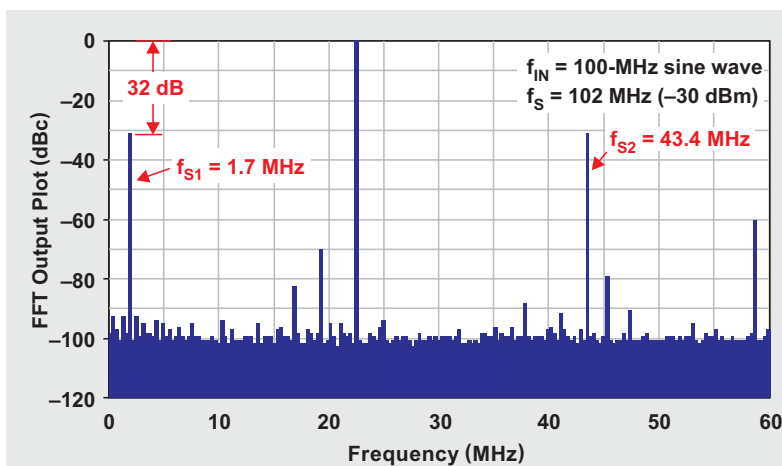
$$f_{S2} = f_{IN} - m = 10 \text{ MHz} - 9.1 \text{ MHz} = 0.9 \text{ MHz}$$

Once again, this correlated very well with the FFT output plot from the ADS5463, as illustrated in Figure 9.

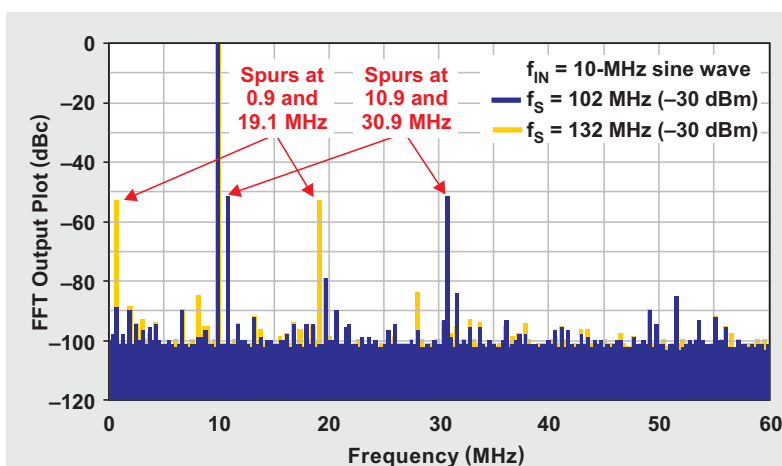
### Practical example

Let's go back and analyze the case of the CDCE72010, mentioned earlier under "Introduction." This device's low-jitter phase-locked loop was configured to drive the TI ADS5483 with LVDS outputs at 122.88 MSPS. No filter was placed between the outputs of the CDCE72010 and the clock input of the ADS5483. This way the full effect of the clock spurs in a real-world design can be observed.

**Figure 8. FFT output of 102-MHz, -30-dBm clock spur**



**Figure 9. FFT output of -30-dBm clock spur at 132 MHz versus 102 MHz**



The phase-noise plot of the unfiltered CDCE72010 in Figure 10 shows two spurs that will impact the SFDR performance of the ADS5483. One spur (S1) is offset about 27 MHz with an amplitude of about  $-130$  dBc/Hz; the other spur (S2) is offset about 3 MHz with an amplitude of about  $-138$  dBc/Hz. The actual spurs are 6 dB lower than shown in the plot because the phase-noise analyzer sums the spurs of the two sidebands together.

The amplitudes of the two spurs can be converted from dBc/Hz to dBc as described before:

$$\begin{aligned}\text{For S1, } 136 \text{ dBc/Hz} &= -136 \text{ dBc} + 10\log(27 \text{ MHz} \times 1\%) \\ &= -136 \text{ dBc} + 54.4 \text{ dB} \\ &= -81.6 \text{ dBc}.\end{aligned}$$

$$\begin{aligned}\text{For S2, } -144 \text{ dBc/Hz} &= -144 \text{ dBc} + 10\log(3 \text{ MHz} \times 1\%) \\ &= -144 \text{ dBc} + 45 \text{ dB} \\ &= -99 \text{ dBc}.\end{aligned}$$

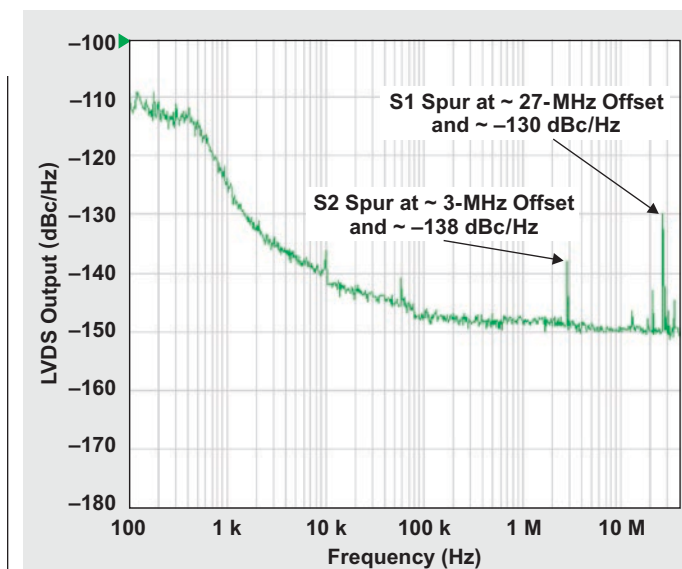
These results can be used to calculate the spur amplitudes of the ADC output spectrum:

$$\begin{aligned}\text{S1} &= 81.6 \text{ dBc} + 20\log\left(\frac{100 \text{ MHz}}{2 \times 122.88 \text{ MHz}}\right) \\ &= -81.6 \text{ dBc} - 7.8 \text{ dB} \\ &= -89.4 \text{ dBc}\end{aligned}$$

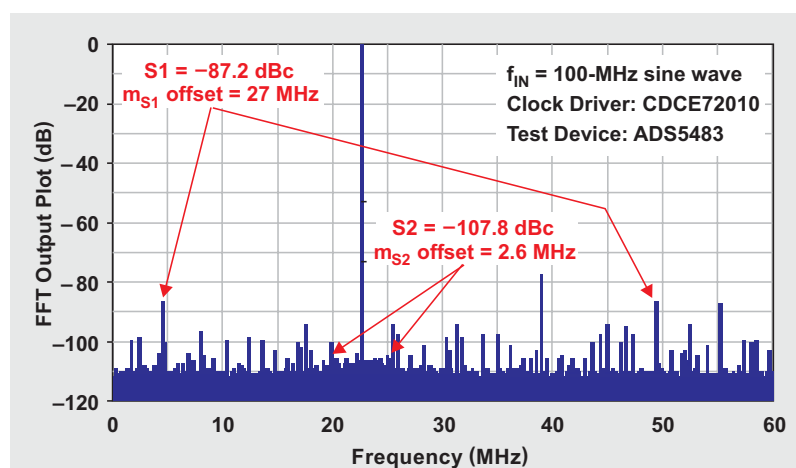
$$\begin{aligned}\text{S2} &= -99 \text{ dBc} + 20\log\left(\frac{100 \text{ MHz}}{2 \times 122.88 \text{ MHz}}\right) \\ &= -99 \text{ dBc} - 7.8 \text{ dB} \\ &= -106.8 \text{ dBc}\end{aligned}$$

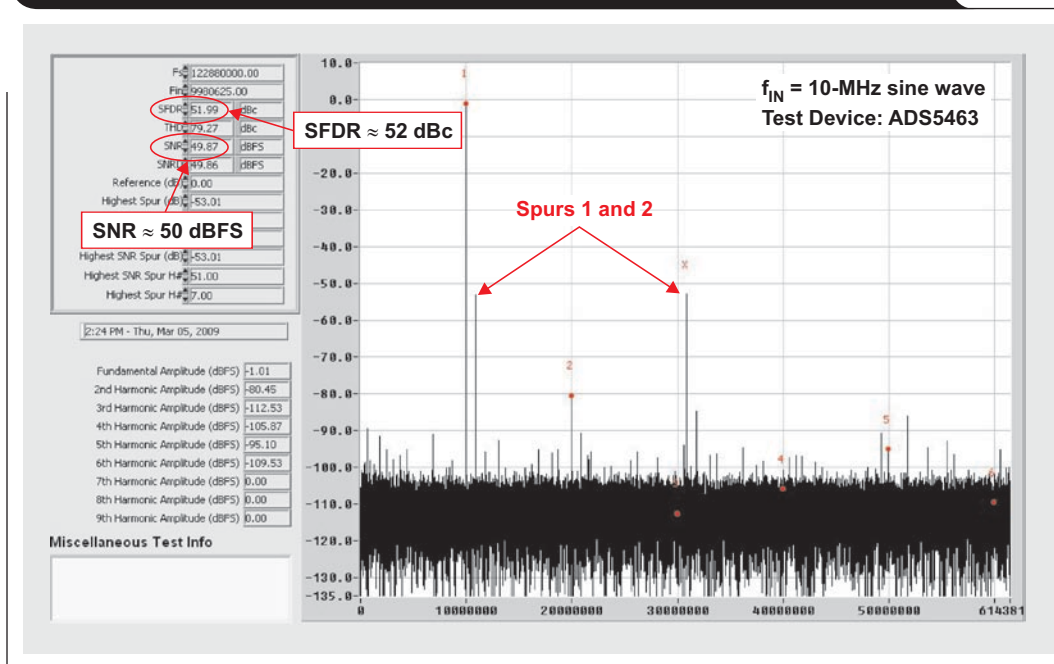
These amplitudes match the measured spur amplitudes of the ADC output spectrum fairly well (within 1 to 2 dB), as shown in Figure 11.

**Figure 10. Phase-noise plot of CDCE72010's unfiltered LVDS output**



**Figure 11. FFT output with 100-MHz input and a 122.88-MHz LVDS clock**



**Figure 12. FFT output with 122.88-MHz clock and a 102-MHz, –30-dBm spur**

### Impact of clock spurs on SNR

Besides reducing the SFDR, spurs on the clock also impact the SNR of the data converter. Since the spurs are at a fixed frequency, they are considered deterministic jitter (DJ); and they contribute to the overall clock jitter, which in turn highly impacts the SNR.

The peak-to-peak DJ from the clock spur can be approximated by

$$DJ_{PP} \approx \frac{S_X(\text{dBc})}{\pi \times f_{CLK}},$$

where  $S_X$  (dBc) is the spur amplitude in dBc. The RMS jitter can be calculated as

$$DJ_{RMS} \approx \frac{DJ_{PP}}{14}.$$

As in the first experiment, with the measured amplitude of the spurs at –33 dBm and that of the clock at about –10 dBm, the relative spur amplitude is roughly

$$-33 \text{ dBm} - (-10 \text{ dBm}) = -23 \text{ dBc}.$$

Substituting –23 dBc into the formula for  $DJ_{RMS}$  yields

$$DJ_{RMS} \approx \frac{DJ_{PP}}{14} = \frac{1}{14} \times \frac{2 \times 10^{-20}}{\pi \times 122.88 \text{ MHz}} = 26 \text{ ps}.$$

Since there are two spurs with a 20-MHz offset, the 26-ps DJ of each spur can be summed together for a total DJ of about 52 ps.

For calculating the SNR of the data converter, the DJ needs to be added to the phase noise of the clock and the aperture jitter of the ADC. However, in this case, the DJ far exceeds the other two jitter components. Therefore, the resulting SNR can be calculated with a jitter of about 52 ps ( $f_{IN} = 10 \text{ MHz}$ ), which is approximately 50.5 dBFS.

The resulting FFT plot of this setup with the ADS5463 is shown in Figure 12. The plot clearly shows the two resulting spurs with an amplitude of –52 dBc and an SFDR of about –52 dBc. The SNR  $\approx 50$  dBFS, which matches the calculated value very well.

### Conclusion

This article has shown that spurs on the ADC sampling clock can significantly degrade the overall system SFDR as well as the SNR. This effect gets amplified even more in undersampling applications where the signal input is moved to higher frequencies than those traditionally used for baseband input. Therefore, it can be concluded that a filtered, high-quality sampling clock is necessary for system engineers who are trying to achieve maximum data-converter performance.

### Related Web sites

[dataconverter.ti.com](http://dataconverter.ti.com)

[www.ti.com/sc/device/partnumber](http://www.ti.com/sc/device/partnumber)

Replace *partnumber* with ADS5463, ADS5483, or CDCE72010

# How the voltage reference affects ADC performance, Part 2

By Miro Oljaca, Senior Applications Engineer,  
and Bonnie Baker, Senior Applications Engineer

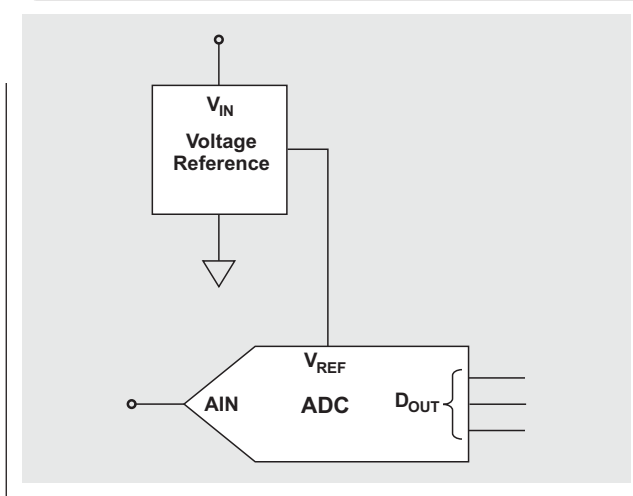
## Introduction

This article is Part 2 of a three-part series that investigates the design and performance of a voltage-reference system for a successive-approximation register (SAR) analog-to-digital converter (ADC). A simplified version of this system is shown in Figure 1. When a design uses an ADC in this system, it is critical to understand the voltage-reference path to the converter. Part 1 (see Reference 1) examined the fundamental operation of an ADC independent of the voltage reference, and then analyzed the performance characteristics that have an impact on the accuracy and repeatability of the system. Part 2 looks at the key characteristics of the voltage-reference block in Figure 1 and the reference's possible impact on the ADC's performance. Part 2 also shows how to design an appropriate external reference for 8- to 16-bit ADCs. Part 3, which will appear in a future issue of the *Analog Applications Journal*, will investigate the impact of the voltage-reference buffer and the capacitors that follow it, discuss how to ensure that the amplifier is stable, and provide a reference design that is appropriate for ADCs with 16+ bits.

## Choosing the correct $V_{REF}$ topology

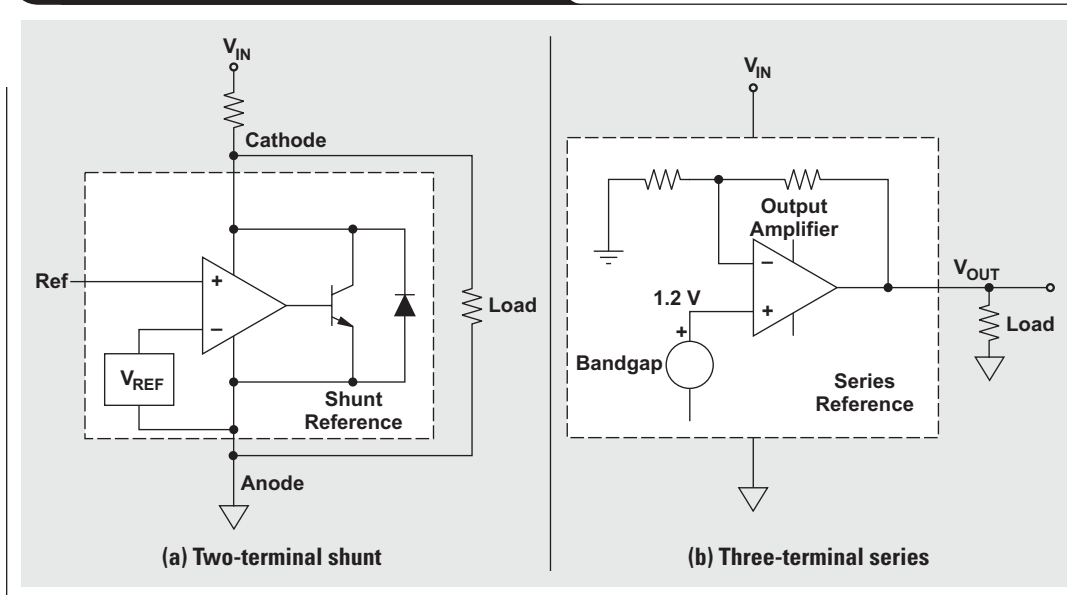
Voltage references are available in two-terminal shunt or three-terminal series configurations (see Figure 2). Figure 2a shows a two-terminal shunt voltage reference, in which the entire IC chip of the shunt reference operates in parallel to its load. With a shunt voltage reference, an input voltage is applied to the resistor that is connected to the cathode. The typical initial voltage accuracy of this device can be as low as 0.5% or range up to 5%, with a temperature coefficient of approximately 50 to 100  $\mu\text{V}/^\circ\text{C}$ . The shunt voltage reference can be used to create positive, negative, or floating reference voltages.

Figure 1. Voltage-reference system for SAR ADC



The three-terminal series voltage reference (Figure 2b) operates in series with its load. An internal bandgap voltage, in combination with an internal amplifier, creates the output voltage of this reference. The series voltage reference produces an output voltage between the output and ground while providing the appropriate output current to

Figure 2. Voltage-reference configurations



the external load. As the load current increases or decreases, the series reference maintains the voltage at  $V_{OUT}$ .

The typical initial voltage accuracy of a series-reference device can be as low as 0.05% or range up to 0.5%, with temperature coefficients as low as 2.5 ppm/°C. Because of the series reference's superior initial output voltage and overtemperature performance, this type of device would be used to drive the reference pins of precision ADCs. Beyond 8 or 14 resolution bits, where the size of the least significant bit (LSB) is respectively 0.4% and 0.006%, an external series voltage reference ensures that the intended precision of the converter can be achieved.

Another common application for series voltage references is sensor conditioning. In particular, a series voltage reference is useful in bridge-sensor applications as well as applications that have thermocouples, thermopiles, and pH sensors.

The initial accuracy of the series voltage reference in an ADC application (as in Figure 1) provides the general reference for the conversion process. Any initial inaccuracy of the output voltage can be calibrated in hardware or software. Additionally, changes in the accuracy of the voltage-reference output can be a consequence of the temperature coefficient, the line regulation, the load regulation, or long-term drift. The series voltage reference provides better performance in all of these categories.

### Understanding reference-voltage noise

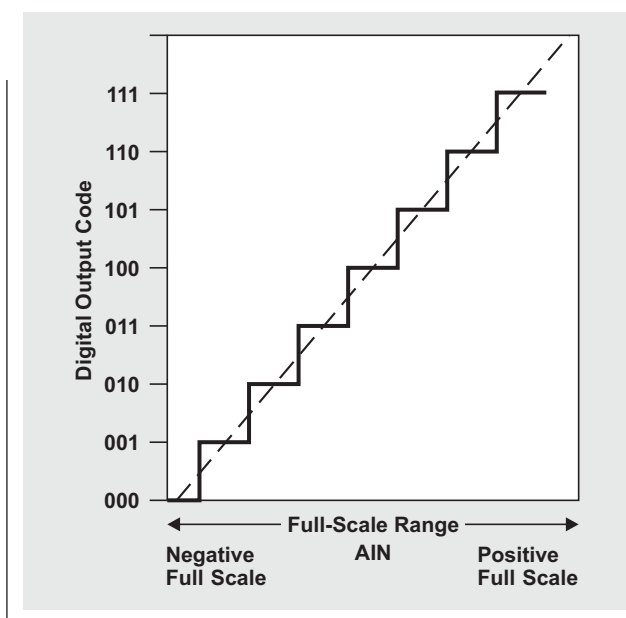
From Part 1 of this series it can be concluded that the ADC has only one function. That function is to compare an input voltage to a reference voltage, or to create an output code based on an input signal and reference voltage. Part 1 presented diagrams and formulas that describe the basic transfer function of the ADC along with the device's noise characteristics. The typical transfer function of an ideal ADC, shown here in Figure 3, was described as

$$\text{Code} = V_{IN} \times \frac{2^n}{V_{REF}}, \quad (1)$$

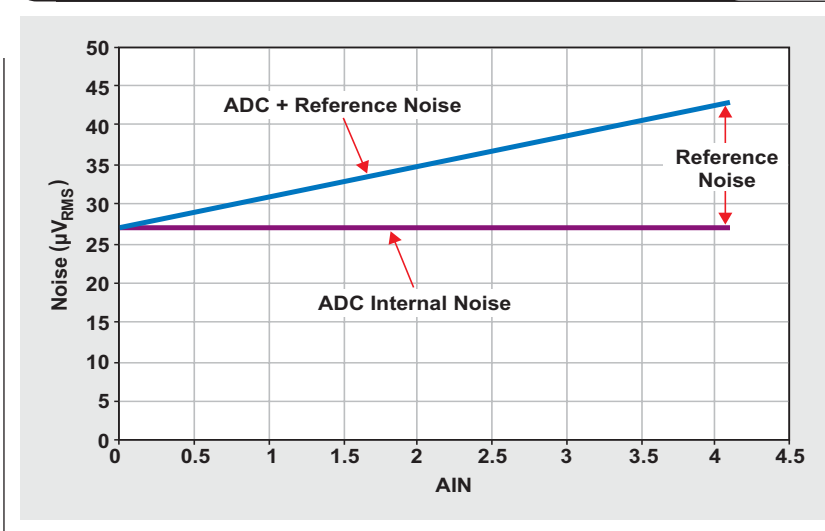
where "Code" is the ADC output code in decimal form,  $V_{IN}$  is the analog input voltage to the ADC,  $n$  is the number of ADC output bits, and  $V_{REF}$  is the analog value of the reference voltage to the ADC. This formula shows that any initial error or noise in the reference voltage translates to a gain error in the code output of the ADC.

If several points from the ADC's negative full-scale input to its positive full-scale input are measured, it becomes clear that the contribution of the reference noise is a function of the ADC input voltage. To evaluate the voltage-reference noise as well as the overall noise, it is necessary

**Figure 3. An ideal, 3-bit ADC transfer function**



**Figure 4. Total noise at ADC output as a function of ADC input voltage**



to measure the noise close to both the negative full scale and the positive full scale. Figure 4 shows the results of measuring the reference noise and the ADC noise in a system. These results show that the overall noise is not constant but linearly dependent on the ADC's analog input voltage. When this type of system is designed, it is important to keep the reference noise lower than the ADC's internal noise.

Both reference topologies in Figure 2 generate comparable noise over frequency. The voltage noise in series voltage references comes mainly from the bandgap and



the output amplifier. Both of these elements generate noise in the  $1/f$  region and the broadband region (see Figure 5).

#### Noise in the voltage reference's $1/f$ region

In the data sheets of most series-reference devices, the specification for output-voltage noise is over the frequency range of 0.1 to 10 Hz, which encompasses the  $1/f$  region in Figure 5. Noise in the  $1/f$  region, often called “pink noise,” is replaced in the higher frequency domain by the broadband noise.

#### Noise in the voltage reference's broadband region

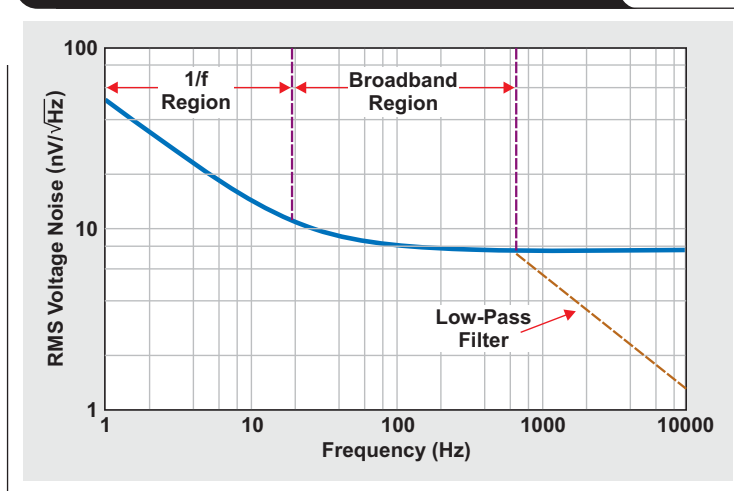
Some manufacturers include specifications for the voltage reference's output noise density. This type of specification is usually for noise in the broadband region, such as the noise density at 10 kHz. Broadband noise, which is present over the higher wide-band frequencies, is also known as “white noise” or “thermal noise.”

An added low-pass filter with an extremely low corner frequency will reduce the broadband noise at the output of the reference. This filter is designed with a capacitor, the equivalent series resistance (ESR) of the capacitor, and the open-loop output impedance of the reference output amplifier (see Figure 6).

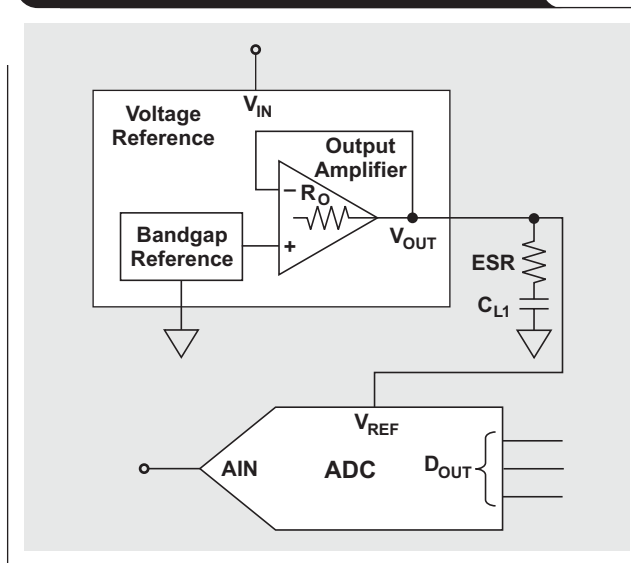
Table 1 shows the noise measured from the Texas Instruments REF5040 for different frequency bandwidths as well as for different external-capacitor values and types. These measurements demonstrate that ceramic capacitors with a low ESR of about  $0.1\ \Omega$  have a tendency to increase noise compared to tantalum capacitors with a standard ESR of about  $1.5\ \Omega$ . This tendency is the result of stability problems and the gain peaking of the reference's output amplifier.

As mentioned earlier, the two sources of noise in the reference voltage are the internal output amplifier and the bandgap. The internal schematic of the REF5040 in Figure 7 shows that the TRIM pin provides direct access to the bandgap. An external capacitor can be added to the TRIM pin to create a low-pass filter. This filter provides a

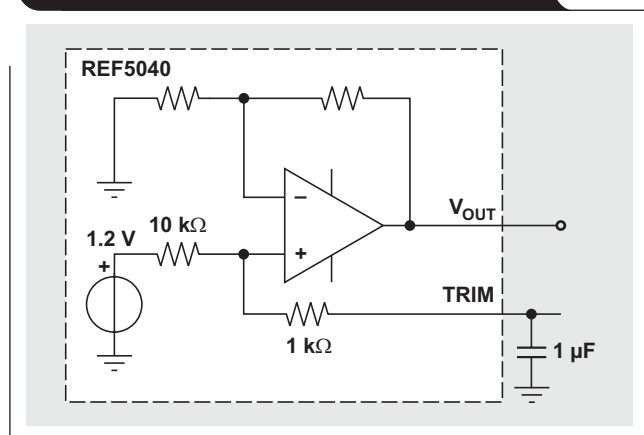
**Figure 5. Example voltage-noise regions in the frequency domain**



**Figure 6. Low-pass filter between series voltage reference and ADC**



**Figure 7. Using TRIM pin to filter REF5040 bandgap noise**



**Table 1. Noise measured from REF5040 for different bandwidths and capacitor values and types**

CAPACITOR	MEASURED NOISE ( $\mu V_{RMS}$ ) FOR FOUR BANDWIDTHS			
	22 kHz (Low-Pass 5-Pole)	30 kHz (Low-Pass 3-Pole)	80 kHz (Low-Pass 3-Pole)	>500 kHz
GND	0.8	1	1.8	4.9
1 $\mu F$ (tantalum)	37.8	41.7	53.7	9017
2.2 $\mu F$ (ceramic)	41.7	46.2	55.1	60.8
10 $\mu F$ (tantalum)	33.4	33.4	35.2	38.5
10 $\mu F$ (ceramic)	37.1	37.2	37.8	39.1
20 $\mu F$ (ceramic)	33.1	33.1	33.2	34.5
47 $\mu F$ (tantalum)	23.2	23.8	24.1	26.5

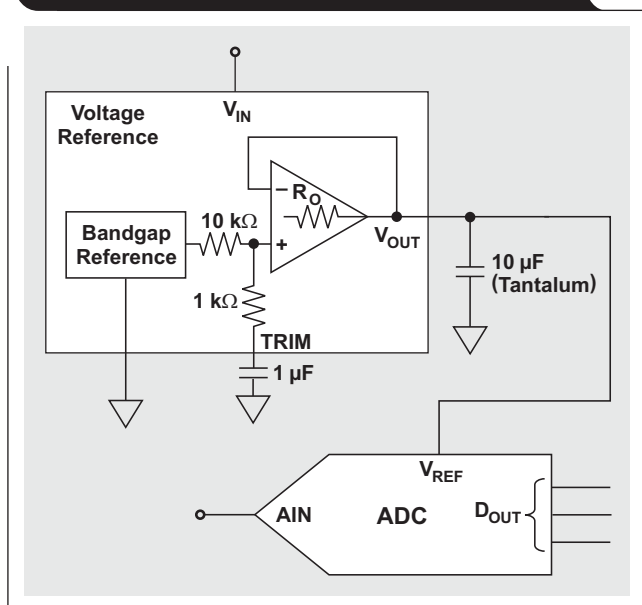
bandgap broadband attenuation of approximately  $-21$  dB. For example, a small  $1\text{-}\mu\text{F}$  capacitor adds a pole at  $14.5$  Hz and a zero at  $160$  Hz. If more filtering is needed, a larger-value capacitor can be used in place of the  $1\text{-}\mu\text{F}$  capacitor. For instance, a  $10\text{-}\mu\text{F}$  capacitor will generate a  $3\text{-dB}$  corner frequency of  $1.45$  Hz. This low-pass filter will lower the bandgap noise. Attaching a  $1\text{-}\mu\text{F}$  capacitor to the TRIM pin of the REF5040 will lower the total output RMS noise by a factor of  $2.5$ .

## Conclusion

Figure 8 shows a complete circuit diagram for a reference system configured with an  $8\text{-}$  to  $16\text{-bit}$  converter. The accuracy of the voltage reference in this system is important; however, any initial inaccuracy can be calibrated with hardware or software. On the other hand, eliminating or reducing reference noise will require a degree of characterization and hardware-filtering techniques. Part 3 of this article series will explore the proper filtering for the broadband region.

Part 3 will also investigate and explain how to design a reference circuit that is appropriate for converters with  $16\text{+}$  bits. The impact of the voltage-reference buffer and its following amplifier/resistor/capacitor network will be analyzed. With the measurements that follow the final system tuning, the assumptions and conclusions of this article series will be compared to the real world.

**Figure 8. Voltage-reference circuit for  $10\text{-}$  to  $14\text{-bit}$  converters**



## References

For more information related to this article, you can download an Acrobat® Reader® file at [www-s.ti.com/sc/techlit/litnumber](http://www-s.ti.com/sc/techlit/litnumber) and replace "litnumber" with the **TI Lit. #** for the materials listed below.

- | Document Title  | TI Lit. # |
|---|-----------|
| 1. Bonnie Baker and Miro Oljaca, "How the Voltage Reference Affects ADC Performance, Part 1," <i>Analog Applications Journal</i> (2Q 2009).....   | slyt331   |
| 2. Bonnie Baker, "A Glossary of Analog-to-Digital Specifications and Performance Characteristics," Application Report .....   | sbaa147   |
| 3. Tim Green. Operational amplifier stability, Parts 3, 6, and 7. <i>EN-Genius Network: analogZONE: acquisitionZONE</i> [Online]. Available: <a href="http://www.analogzone.com/acqt0000.pdf">http://www.analogzone.com/acqt0000.pdf</a> (Replace "0000" with "0307" for Part 3, "0704" for Part 6, or "0529" for Part 7.)              | —         |
| 4. Bonnie C. Baker and Miro Oljaca. (2007, June 7). External components improve SAR-ADC accuracy. <i>EDN</i> [Online]. Available: <a href="http://www.edn.com/contents/images/6447231.pdf">http://www.edn.com/contents/images/6447231.pdf</a>   | —         |
| 5. Wm. P. (Bill) Klein, Miro Oljaca, and Pete Goad. (2007). Improved voltage reference circuits maximize converter performance. Analog eLab™ Webinar [Online]. Available: <a href="http://dataconverter.ti.com">http://dataconverter.ti.com</a> (Scroll down to "Videos" under "Analog eLab™ Design Support" and select webinar title.) | —         |
| 6. Art Kay. Analysis and measurement of intrinsic noise in op amp circuits, Part I. <i>EN-Genius Network: analogZONE: audiovideoZONE</i> [Online]. Available: <a href="http://www.en-genius.net/includes/files/avt_090406.pdf">http://www.en-genius.net/includes/files/avt_090406.pdf</a>   | —         |

## Related Web sites

[dataconverter.ti.com](http://dataconverter.ti.com)

[www.ti.com/sc/device/REF5040](http://www.ti.com/sc/device/REF5040)



# Reducing radiated EMI in WLED drivers

By Jeff Falin

Senior Applications Engineer

Most mobile phones use white LEDs (WLEDs) as the backlight for their displays. Li-Ion batteries with an output range of 2.7 to 4.2 V are the most common power source for mobile phones. Since several WLEDs in series, each with forward voltages around 3.6 V, are typically used for the backlight, the backlight driver must provide a voltage higher than the Li-Ion range. Therefore, an inductive boost converter is a common power-supply topology for WLED drivers. Figure 1 shows a typical backlight-driver solution that uses the TPS61161 to drive ten LEDs in series.

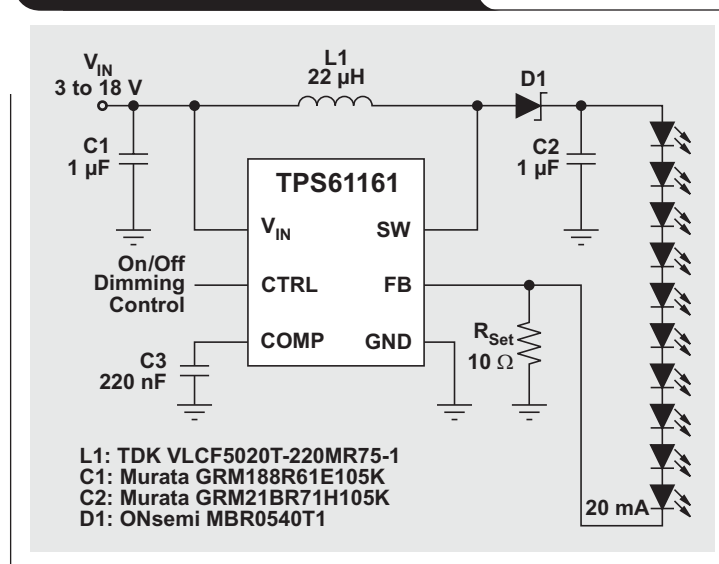
All inductive switching converters cause radiated electromagnetic interference (EMI) that is directly proportional to output power. As the size of mobile phone displays increases to accommodate more features, the backlight driver's increased output power results in more EMI. Factors at each design step, from driver-IC selection to board layout, impact the WLED driver's EMI. Therefore, minimizing the WLED backlight driver's radiated EMI so that it does not affect other systems is a major concern for manufacturers of both the backlight driver IC and the mobile phone.

Radiated EMI is caused by induced electric fields where capacitors store their energy, and induced magnetic fields where inductors store their energy. The electric-field

strength of a capacitor is directly proportional to its capacitance and the voltage across its terminals. The capacitance is inversely proportional to the distance between the terminals. Ideally, the IC and components are laid out on the board to minimize the undesired (often called "parasitic") capacitance. Such capacitance can be created, for example, by a large metal trace or plane on top of a ground trace or plane. Likewise, an inductor's magnetic-field strength is directly proportional to its inductance value and the current flowing through it. The inductance value is directly proportional to the wire or trace length. The board ideally is laid out to minimize parasitic inductance created by long wires, loops, and traces; and shielded inductors are used on the PCB itself. Moreover, the rate of change of the voltages across and the currents through these parasitic components directly impacts their field strengths. Key methods of reducing EMI are to minimize the size of and interaction between these parasitic components and to reduce their voltages and current ramp rates.

The circuit designer and IC-layout engineer are responsible for minimizing the parasitic inductances and capacitances that occur at high frequencies (greater than 300 MHz) and/or for managing voltage and current ramp rates inside the IC. Otherwise, the IC itself will generate

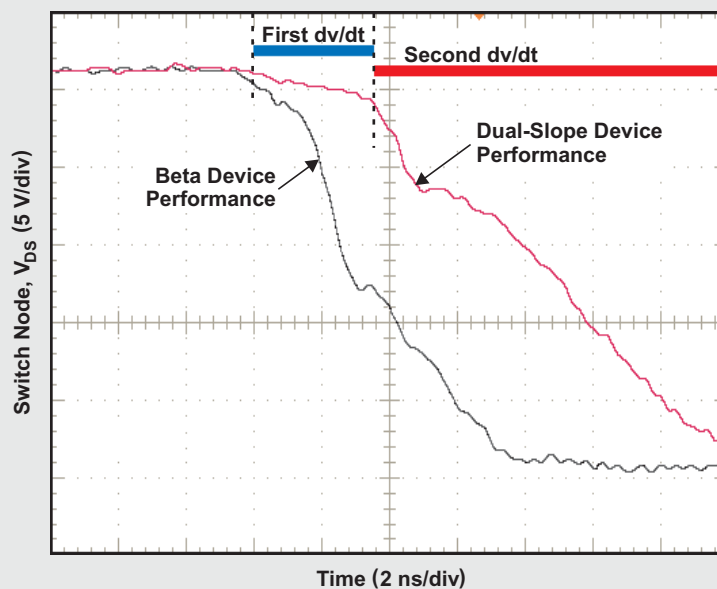
Figure 1. TPS61161 backlight driver



EMI. Consider Figure 2, which shows the drain voltage,  $V_{DS}$ , of the TPS61161's internal NMOS FET (i.e., the switch node) as the FET turns on. The blue trace is from a test board with beta TPS61161 silicon that has a commonly used high-speed gate drive. The red trace shows the same node on the same test board but with the final TPS61161 silicon that has TI's dual-slope switching technology. This technology controls the switch node's slope on the falling edge (i.e.,  $dv/dt$ ) in two steps. When the internal power FET first turns on, there is a large current spike. During the first step of a dual-slope FET compared to a normal FET, the  $dv/dt$  is slowed to reduce the amplitude of the current spike and the EMI that results primarily from parasitic inductance. During the second step, the switch FET returns to its normal, faster  $dv/dt$  to minimize the switching losses that would otherwise occur.

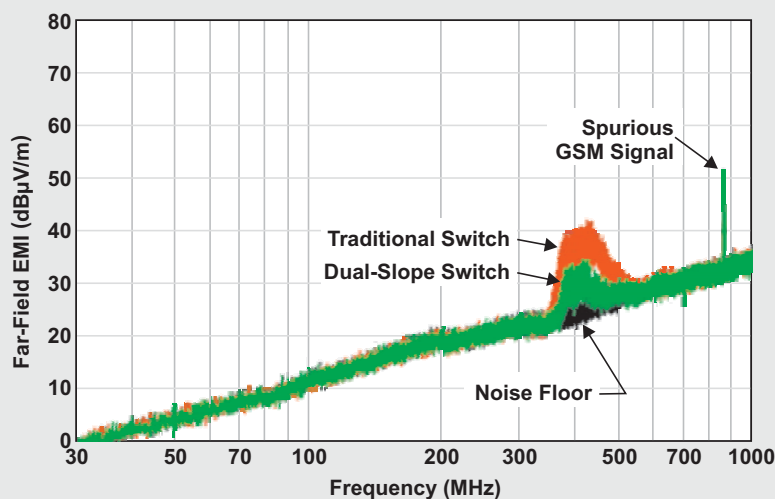
To measure the far-field EMI from a battery-powered evaluation module (TPS61161EVM-243), an IC with a traditional switch (shown in red in Figure 3) and an IC with a dual-slope switch (shown in green) were used in the same test environment. The black curve shows the noise floor of the measurement, and the 850-MHz spike is

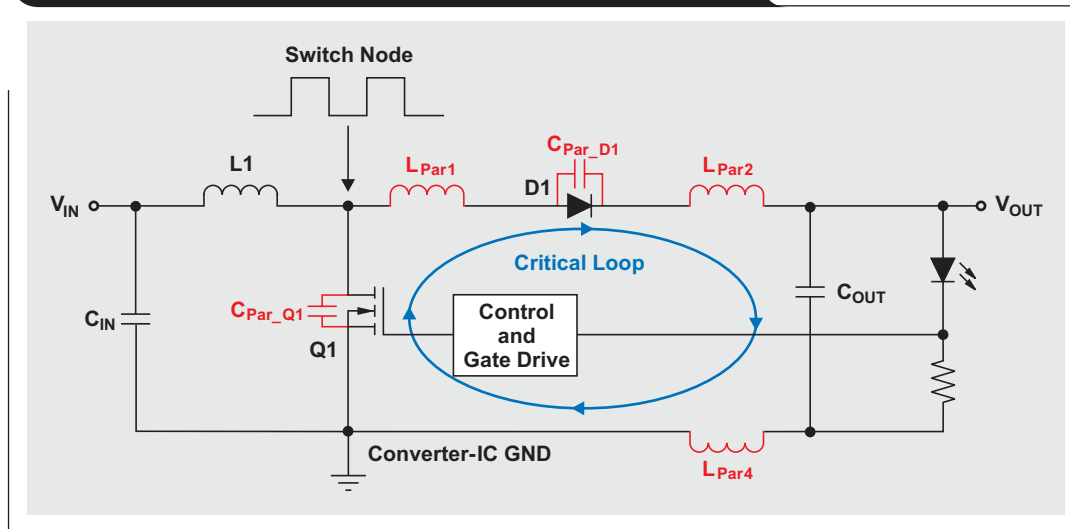
**Figure 2. Switch node ( $V_{DS}$  of NMOS FET) of TPS61161's WLED driver**



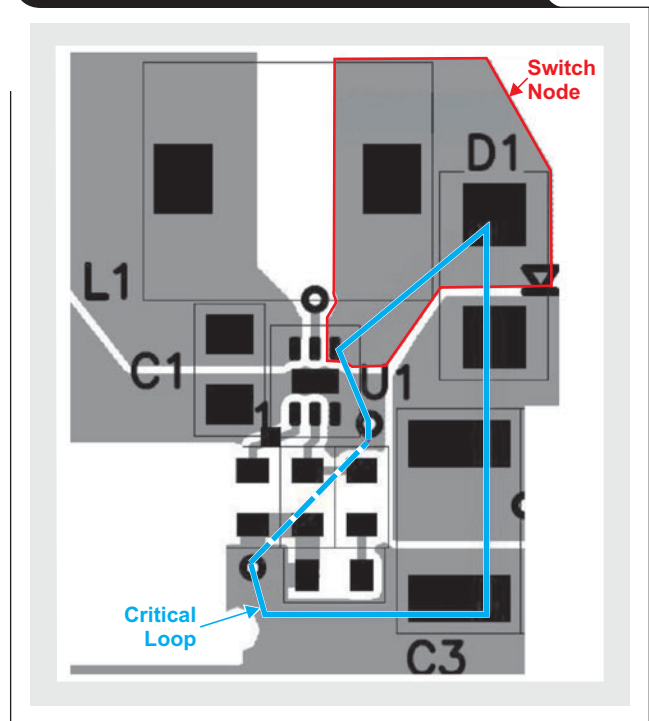
from a spurious GSM signal. It is clear that the dual-slope switching technology reduced the EMI in the 400-MHz range by 10 dB $\mu$ V/m.

**Figure 3. TPS61161's EMI measurements with traditional switch and dual-slope switch**



**Figure 4. Schematic of boost-converter-based WLED driver**

At lower frequencies, the parasitic inductance and capacitance of the PCB's traces and planes are the primary contributors to EMI. Figure 4 shows the schematic for a boost-converter-based WLED driver. The loop created by the parasitic capacitance of Q1 and D1 and the parasitic inductance of the board traces conducts current when switches D1 and Q1 turn on and off. When switch Q1 turns off, inductor L1 is fully charged and ready to continue the current flow. Since the only available element through which current can continue to flow is D1, the inductor voltage quickly switches from GND to  $V_{OUT}$ , which causes ringing due to the parasitics. The resonance point of the parasitic inductance and capacitance can sometimes be seen on the oscilloscope as ringing at the resonant frequency. In addition to the parasitic capacitance of Q1 and D1, ground planes and the traces over/under them also contribute to parasitic capacitance. A commonly overlooked type of parasitic capacitance is that formed by the switch node—with its large  $dv/dt$ —and the ground plane underneath. Figure 5 shows a poor PCB layout that uses the TPS61161, where L1 is the inductor, D1 is the diode, U1 is the TPS61161 controller, C1 is the input capacitor, and C3 and C4 are the output capacitors. The critical loop, highlighted in blue, is long; and there is a large ground plane underneath the large pad for L1 that serves as the high-speed switch node (not shown).

**Figure 5. Poor PCB layout with TPS61161**

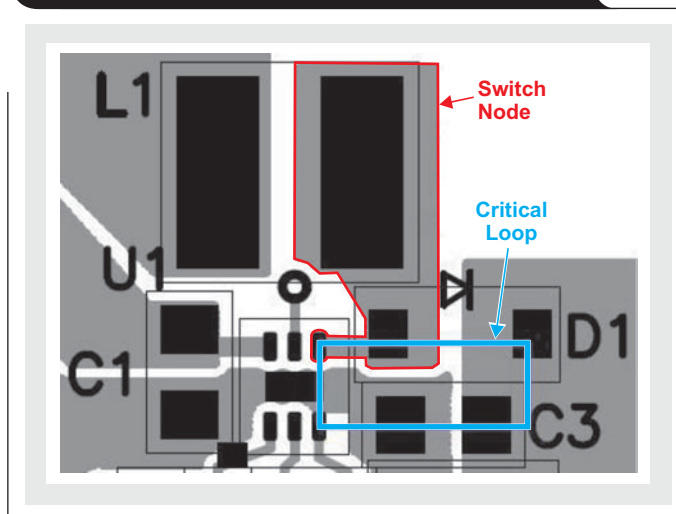
**Figure 6. Improved PCB layout with TPS61161**

Figure 6 shows the TPS61161 evaluation module with the same components as in Figure 5 but with a smaller switch node, no ground plane underneath, and more compact part placement to reduce the length of the critical loop (shown in blue).

Figure 7 shows the near-field EMI measurements from two battery-powered test boards, one with poor layout and the other with improved layout. The tests were conducted under identical conditions with the same inductor and the TPS61161 (final silicon). Clearly, an improved board layout that minimizes parasitic board capacitance and inductance reduces EMI across multiple frequencies.

A switching converter's EMI cannot be completely eliminated. However, with careful IC and passive-component selection as well as good board-layout techniques, EMI can be reduced to acceptable levels.

## Reference

For more information related to this article, you can download an Acrobat® Reader® file at [www-s.ti.com/sc/techlit/litnumber](http://www-s.ti.com/sc/techlit/litnumber) and replace "litnumber" with the **TI Lit. #** for the materials listed below.

## Document Title

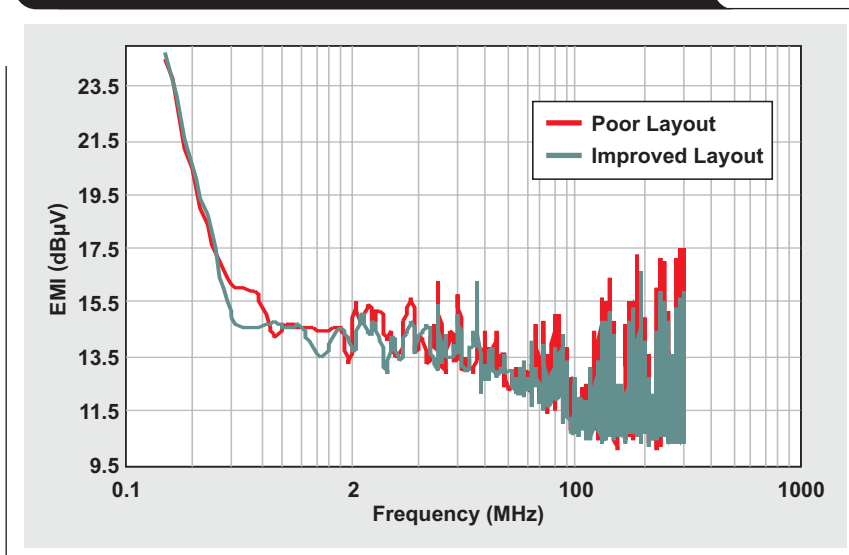
**TI Lit. #**

1. "White LED Driver With Digital and PWM Brightness Control in 2mm × 2mm QFN Package for up to 10 LEDs in Series,"  
TPS61160/61 Data Sheet. .... slvs791

## Related Web sites

[power.ti.com](http://power.ti.com)

[www.ti.com/sc/device/TPS61161](http://www.ti.com/sc/device/TPS61161)

**Figure 7. TPS61161's EMI measurements with poor and improved layouts**

# Using fully differential op amps as attenuators, Part 2: Single-ended bipolar input signals

By Jim Karki

Member, Technical Staff, High-Performance Analog

## Introduction

Fully differential operational amplifiers (FDAs) can easily be used to attenuate and level-shift high-voltage input signals to match the input requirements of lower-voltage ADCs. This article is Part 2 of a three-part series. In Part 1 (see Reference 2) we considered a balanced, differential bipolar input signal and proposed an architecture utilizing an FDA to accomplish the task. In Part 2 we will show how to adapt the circuits presented in Part 1 to a high-voltage, single-ended (SE) bipolar input. Part 3, which will appear in a future issue of the *Analog Applications Journal*, will show the more generic case of an SE unipolar input with arbitrary common-mode voltage. As mentioned in Part 1, the fundamentals of FDA operation are presented in Reference 1, which provides definitions and derivations.

## Attenuator circuit for SE bipolar input

### Using an input attenuator

Now consider a high-amplitude, SE bipolar input signal that needs to be attenuated and level-shifted to the appropriate levels to drive a lower-voltage input ADC. The first step is to modify the differential bipolar input circuit presented in Part 1 to accept an SE bipolar input and keep the amplifier balanced. This is accomplished by grounding one side of the signal source, splitting  $R_T$  in half, and grounding the center point. Otherwise the circuit is the same. Splitting  $R_T$  in half and grounding the center point are key to keeping the resistances that set the gain on each side of the amplifier balanced so that no offsets are generated. Figure 5 shows the modified circuit.

We can build the circuit as shown (with appropriate values), but we can get the equivalent circuit shown in Figure 6 with a few simple changes: Combine  $R_S$ ,  $R_G$ , and  $R_T/2$  on the alternate input from the signal into an equivalent resistor  $R_{G+}$ ; use reference designator  $R_{G+}$  on the positive side; and replace  $R_T/2$  with  $R_T$ . The circuit analysis of Figure 6 is very similar to that of Figure 1 in Part 1 of this series, but the changes in the input configuration result in a new gain equation:

$$\frac{V_{OUT\pm}}{V_{Sig}} = \frac{R_T}{R_S + R_T} \times \frac{R_F}{R_{G+} + R_S \parallel R_T} \quad (4)$$

The noise gain of the FDA can be set to 2 by making the second half of Equation 4 equal to 1:

$$R_{G+} + R_S \parallel R_T = R_F \quad (5)$$

Figure 5. Differential bipolar input circuit modified to accept SE bipolar input

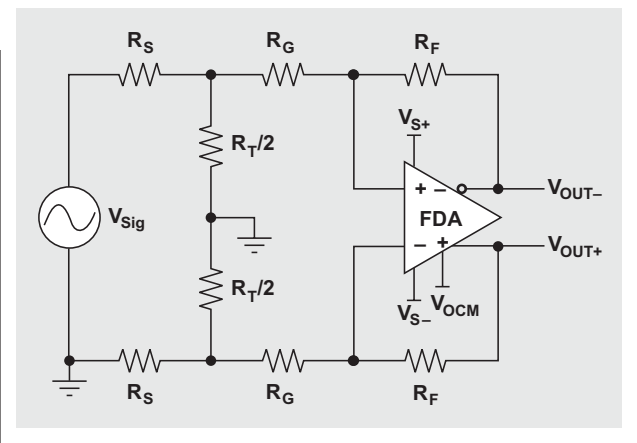
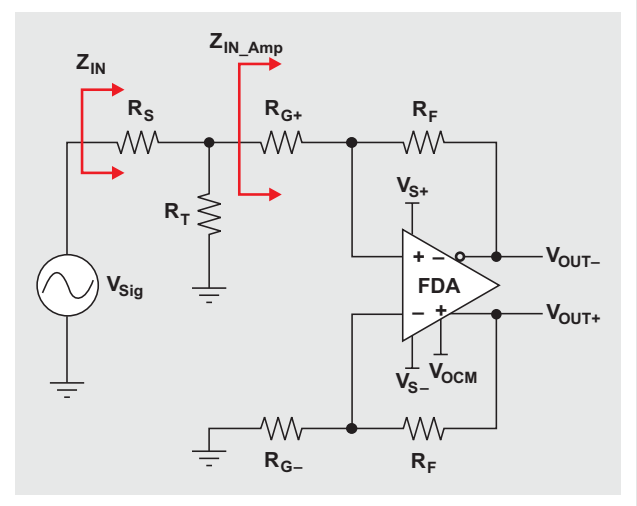


Figure 6. Equivalent SE bipolar input circuit



With this constraint, the overall gain equation reduces to

$$\frac{V_{OUT\pm}}{V_{Sig}} = \frac{R_T}{R_S + R_T} \quad (6)$$

The design equations provide two degrees of freedom for choosing components. The input impedance is given by

$Z_{IN} = R_S + R_T \parallel Z_{IN\_Amp}$ , which is approximated by  $Z_{IN} = R_S + R_T \parallel R_{G+}$ ; so we start by first choosing  $R_S$  close to the desired input impedance. We then select  $R_F$  in the recommended range for the device and calculate the required value of  $R_T$  to give the desired attenuation. These results can be used to calculate  $R_{G+}$  and an equivalent value for  $R_{G-}$ . To see an example Excel® worksheet, click on the Attachments tab or icon on the left side of the Acrobat® Reader® window. Open the file FDA\_Attenuator\_Examples\_SE\_Bipolar\_Input.xls, then select the Bipolar SE FDA Input Atten worksheet tab.

### Design Examples 3a and 3b

For Example 3a, let's say that again we have a 20-V<sub>PP</sub> bipolar (±10-V) input, but this time it is an SE signal. We need a 1-kΩ input impedance and want to use the ADS8321 SAR ADC with a 5-V<sub>PP</sub> differential input and a 2.5-V common-mode voltage. We choose  $R_S = 1\text{ k}\Omega$  and  $R_F = 1\text{ k}\Omega$ . Rearranging Equation 6 and using substitution, we can calculate

$$R_T = \frac{R_S}{\frac{V_{Sig}}{V_{OUT\pm}} - 1} = \frac{1\text{ k}\Omega}{4 - 1} = 333.3\text{ }\Omega.$$

The nearest standard 1% value, 332 Ω, should be used. Then, rearranging Equation 5 and using substitution, we can calculate

$$R_{G+} = R_F - R_S \parallel R_T = 1\text{ k}\Omega - 1\text{ k}\Omega \parallel 332\text{ }\Omega = 750\text{ }\Omega,$$

which is a standard 1% value. We can then calculate

$$R_{G-} = R_{G+} + R_S \parallel R_T = 750\text{ }\Omega + 1\text{ k}\Omega \parallel 332\text{ }\Omega = 1\text{ k}\Omega,$$

which is a standard 1% value. These values will provide the needed attenuation and keep the FDA stable. Again the  $V_{OCM}$  input on the FDA is used to set the output common-mode voltage to 2.5 V.

The input impedance is  $Z_{IN} = 1254\text{ }\Omega$ , which is higher than desired. If the input impedance really needs to be closer to 1 kΩ, we can iterate with a lower value as before. In this case, using  $R_S = 787\text{ }\Omega$  and  $R_F = 1\text{ k}\Omega$  will yield  $Z_{IN} = 999\text{ }\Omega$ , which comes as close as is possible when standard 1% values are used.

To see a TINA-TI™ simulation of the circuit in Example 3a, click on the Attachments tab or icon on the left side of the Acrobat Reader window. If you have the TINA-TI software installed, you can open the file FDA\_Attenuator\_Examples\_SE\_Bipolar\_Input.TSC to view the example (the top circuit labeled “Example 3a”). To download and install the free TINA-TI software, visit [www.ti.com/tina-ti](http://www.ti.com/tina-ti) and click the Download button.

The simulation waveforms for Example 3a show that the signal is distorted. Further investigation will show that the input common-mode voltage range of the THS4520 used in the simulation has been violated, causing nonlinear operation. In this case the SPICE model shows a problem; but care must be taken to double-check operation against

the data sheet, as not all SPICE models will show this error. For instance, replacing the THS4520 model with the THS4509 will simulate fine, but the actual device has a similar input common-mode voltage range.

One way to correct the problem is to use pull-up resistors from the FDA input pins to the +5-V supply, as described in the THS4520 data sheet. In this case, 2-kΩ pull-up resistors will bring the input common-mode voltage back into linear operation and will have no effect on the gain of the signal. To see a TINA-TI simulation of this corrected circuit (Example 3b), follow the same procedure as for Example 3a, but view the middle circuit labeled “Example 3b.” Note that this circuit provides the same results as those shown in Figure 3 of Part 1.

Another way to eliminate the problem with input common-mode voltage is to use the  $R_F$  and  $R_G$  gain-setting resistors of the FDA as the attenuator, a method that is described next.

### Using an FDA's $R_F$ and $R_G$ as an attenuator

The proposed circuit using gain-setting resistors to obtain an SE bipolar input signal is shown in Figure 7. In this circuit, the FDA is used as an attenuator in a manner similar to using an inverting op amp, as described in Part 1 for the differential bipolar signal. The design equations are the same as in Part 1, except that the input impedance is reduced by approximately half. Thus, the gain (or attenuation) is set by  $R_F$  and  $R_G$ :

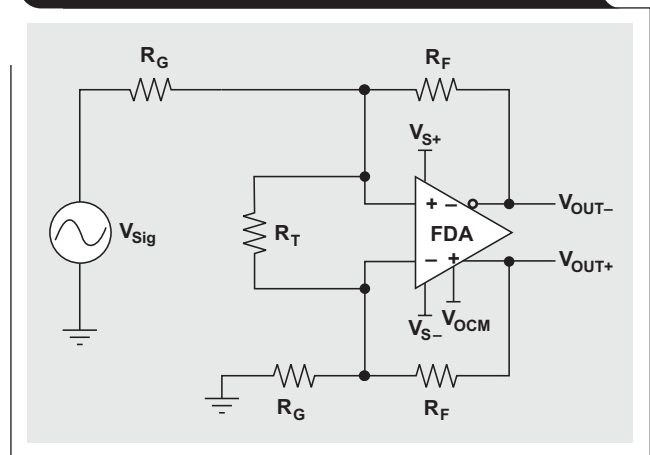
$$\frac{V_{OUT\pm}}{V_{Sig}} = \frac{R_F}{R_G}$$

$R_T$  is used to set the noise gain to 2 for stability; i.e.,

$$R_F = R_G \parallel \frac{R_T}{2},$$

and the input impedance is  $Z_{IN} \approx R_G$ .

**Figure 7. Using FDA's  $R_F$  and  $R_G$  as attenuator for SE bipolar input**





### Design Example 4

Using the same approach as for Example 3a, with  $R_F = 1 \text{ k}\Omega$ , we calculate  $R_G = 4 \text{ k}\Omega$  (the nearest standard 1% value is  $4.02 \text{ k}\Omega$ ) and  $R_T = 2.67 \text{ k}\Omega$  (the nearest standard 1% value is  $2.67 \text{ k}\Omega$ ). This makes  $Z_{IN} \approx 4.02 \text{ k}\Omega$ , and SPICE shows it to be more on the order of  $4.46 \text{ k}\Omega$ . The simulation results are the same as before, but with this approach the only freedom of choice given the design requirements is the value of  $R_F$ .

To see an example Excel worksheet, click on the Attachments tab or icon on the left side of the Acrobat Reader window. Open the file FDA\_Attenuator\_Examples\_SE\_Bipolar\_Input.xls, then select the Bipolar SE FDA RF\_RG Atten worksheet tab. To see a TINA-TI simulation of the circuit in Example 4, follow the same procedure as for Example 3a, but view the bottom circuit labeled "Example 4." Note that the circuit provides the same results as those shown in Figure 3 of Part 1.

### Conclusion

We have analyzed two approaches to using an FDA to attenuate and level-shift high-amplitude, SE bipolar signals to the input range of lower-voltage input ADCs. The first approach (Example 3a) uses an input attenuator with values chosen to provide the required attenuation and to keep the noise gain of the FDA equal to 2 for stability. We saw in the simulation of this example that there is a potential problem with input common-mode voltage that we can solve by using pull-up resistors from the inputs (Example 3b). The second approach (Example 4) uses the gain-setting resistors of the FDA in much the same way as using an inverting op amp, then a resistor is bootstrapped across the inputs to provide a noise gain of 2. Except for the potential problem with the input common-mode voltage in Example 3a, the approaches in Examples 3a and 4 yield the same voltage translation that is needed to accomplish the interface task. Other performance metrics were not analyzed here, but the two approaches have substantially the same noise, bandwidth, and other AC and DC performance characteristics as long as the value of  $R_F$  is the same.

The input-attenuator approach in Example 3a is more complex but allows the input impedance to be adjusted

independently from the gain-setting resistors used around the FDA. At least to a certain degree, lower values can easily be achieved if desired, but there is a maximum allowable  $R_S$  where larger values require the  $R_{G+}$  resistor to be a negative value. For example, setting  $R_S = 4 \text{ k}\Omega$  results in  $R_{G+} = 0 \Omega$ . The spreadsheet tool provided will generate "#NUM!" errors for this input as it tries to calculate the nearest standard value, which then replicates throughout the rest of the cells that require a value for  $R_{G+}$ ; but this value will work.

The approach in Example 4 is easier, but the input impedance is set as a multiplication of the feedback resistor and attenuation:  $Z_{IN} \approx 2 \times R_F \times \text{Attenuation}$ . This does allow some design flexibility by varying the value of  $R_F$ , but the impact on noise, bandwidth, distortion, and other performance characteristics should be considered.

One final note: The source impedance will affect the input gain or attenuation of either circuit and should be included in the value of  $R_S$ , especially if it is significant.

### References

For more information related to this article, you can download an Acrobat® Reader® file at [www.s.ti.com/sc/techlit/litnumber](http://www.s.ti.com/sc/techlit/litnumber) and replace "litnumber" with the **TI Lit. #** for the materials listed below.

Document Title	TI Lit. #
1. Jim Karki, "Fully-Differential Amplifiers," Application Report. . . . .	sloa054
2. Jim Karki, "Using Fully Differential Op Amps as Attenuators, Part 1: Differential Bipolar Input Signals," <i>Analog Applications Journal</i> (2Q 2009). . . . .	slyt336

### Related Web sites

[amplifier.ti.com](http://amplifier.ti.com)

[www.ti.com/sc/device/partnumber](http://www.ti.com/sc/device/partnumber)

Replace *partnumber* with ADS8321, THS4509, or THS4520

[www.ti.com/tina-ti](http://www.ti.com/tina-ti)

# Interfacing op amps to high-speed DACs, Part 1: Current-sinking DACs

By Jim Karki

Member, Technical Staff, High-Performance Analog

## Introduction

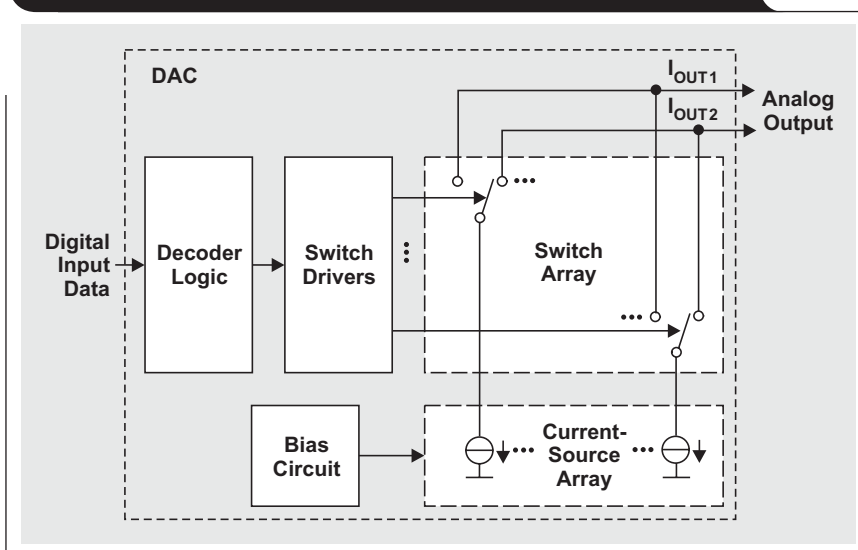
Digital-to-analog converters (DACs) come in many bit resolutions and sampling speeds. Outputs from lower-speed DACs are often single-ended and have either a voltage or a current output. Most high-speed DACs are designed with complementary outputs that either source or sink current. This article, Part 1 of a three-part series, discusses the interface between a current-sinking DAC and an op amp. Part 2, which will appear in a future issue of the *Analog Applications Journal*, will discuss the interface between a current-sourcing DAC and an op amp. Part 3, also in a future issue of the *Analog Applications Journal*, will provide a simplified approach to the interface analogy presented in Part 2.

High-speed DACs are used in end-equipment applications like communications, test equipment, medical applications, industrial applications, and many more where signal generation is required. Each of these applications has its own specific requirements for signal characteristics and performance. This article focuses on end equipment that requires DC coupling, like signal generators with frequency bandwidths of up to 100 MHz and a single-ended output. In these cases, high-speed op amps can provide a good solution for converting the complementary-current output from a high-speed DAC to a voltage that can drive the signal output.

## Overview of complementary-current-steering DAC

A simplified block diagram of a complementary-current-steering DAC is shown in Figure 1. The digital input is decoded for the switch drivers that switch, or steer, the appropriate current source(s) in the current-source array to the outputs,  $I_{OUT1}$  and  $I_{OUT2}$ .  $I_{OUT1}$  and  $I_{OUT2}$  are complementary, which means that if current flows out of one it is subtracted from the other, and vice versa, keeping the total current constant. For example, if full scale is 20 mA, the minimum code input or zero-scale input may provide

Figure 1. Simplified block diagram of current-steering DAC



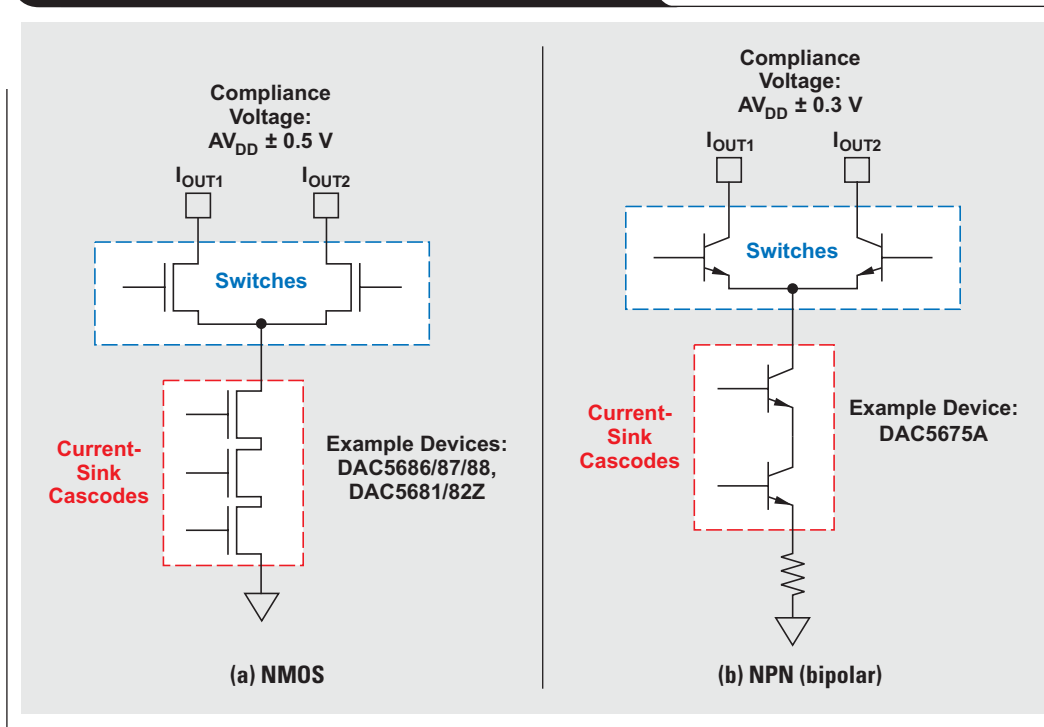
0 mA at  $I_{OUT1}$  and 20 mA at  $I_{OUT2}$ . At midscale, each output provides 10 mA; and at maximum or full scale,  $I_{OUT1} = 20$  mA and  $I_{OUT2} = 0$  mA. This example is illustrated in Table 1. It is important to note that the midscale input, with each output at 10 mA, will be used to set the output common-mode condition for the design.

The current-source array is constructed with either n-type or p-type transistors. The word “source” is used generically to refer to the transistor circuit structure, which may either source or sink current. This article considers the interface between a current-sinking DAC and an op amp in the case where the source array is constructed with n-type transistors.

Table 1. Example of  $I_{OUT1}$  and  $I_{OUT2}$  currents for 20-mA full scale

INPUT	$I_{OUT1}$ (mA)	$I_{OUT2}$ (mA)
Maximum Scale	20	0
Midscale	10	10
Zero Scale	0	20



**Figure 2. Simplified NMOS and NPN current sinks**

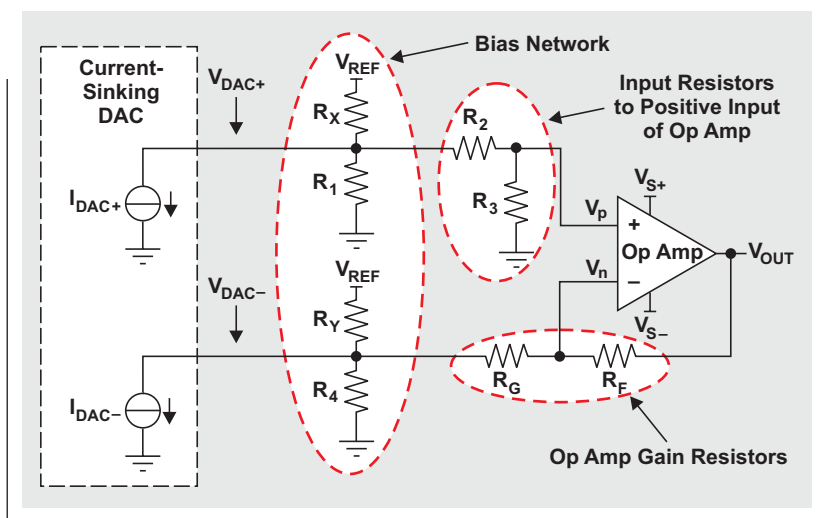
## Architecture and compliance voltage of current-sinking DACs

Figure 2 shows simplified examples of NMOS and NPN current sinks and lists a few devices that use them. The compliance voltage shown for each group of devices is the voltage range at the DAC outputs within which a device will perform as specified. Lower voltages tend to shut down the outputs, and higher voltages have the potential to cause breakdown. Both of these should be avoided to provide the best performance and long-term reliability.

Generally the output is terminated via some impedance to a positive power supply. This impedance supplies a current path needed for the sink array, and the voltage drop across the same impedance can be used as a voltage output. The impedance can be constructed in various ways; it can be a simple resistor divider, a transformer-coupled impedance, or a combination of passive components and an active circuit. This article focuses on the latter option, with an op amp as the active circuit.

## Op amp interface

The proposed op amp interface is shown in Figure 3. This circuit will provide biasing of the DAC outputs, convert the DAC currents to voltages, and provide a single-ended output voltage via the op amp. The op amp is the active

**Figure 3. Proposed circuit for an op amp interface**

amplifier element for the circuit and uses  $R_2$ ,  $R_3$ ,  $R_G$ , and  $R_F$  to make a difference amplifier.

- $I_{DAC+}$  and  $I_{DAC-}$  are the current outputs from the DAC.
- $R_2$  and  $R_3$  are input resistors to the positive input of the op amp.
- $R_G$  and  $R_F$  are the main gain-setting resistors for the op amp.
- $R_X$ ,  $R_1$ ,  $R_Y$ , and  $R_4$  provide bias and impedance termination for the DAC outputs.

- $V_{DAC+}$  and  $V_{DAC-}$  are the voltages at the outputs of the DAC.
- $V_p$  and  $V_n$  are the input terminals of the op amp.
- $V_{S+}$  and  $V_{S-}$  are the power supplies to the op amp.

Proper component selection will provide the impedance required to maintain voltage compliance with maximum amplitude and balance for the best performance.

Typically, harmonic distortion in an op amp is dominated (at least at lower frequencies) by the second-order harmonics. Balanced inputs to the difference-amplifier circuit will help suppress second-order harmonics and provide for the best performance, but little impact is expected on third-order harmonics if the inputs are not balanced.

For analysis, it is easiest to break the circuit into positive and negative halves and examine each separately. It will also be assumed that the op amp is ideal.

### Analysis of positive side

The positive half of the circuit is shown in Figure 4. To start the analysis, Kirchhoff's current law can be used to write a node equation at  $V_{DAC+}$ :

$$I_{DAC+} + \frac{V_{DAC+} - V_{REF}}{R_X} + \frac{V_{DAC+}}{R_1} + \frac{V_{DAC+}}{R_2 + R_3} = 0 \quad (1)$$

The input impedance can be expressed as

$$Z_{DAC+} = R_X \parallel R_1 \parallel (R_2 + R_3). \quad (2)$$

Equations 1 and 2 are simultaneous equations with many variables, and designers must choose or identify values based on other design criteria in order to solve them. The following assumptions are made for this article:

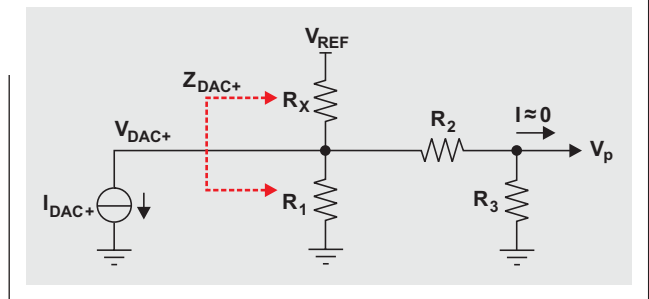
1. The DAC output current,  $I_{DAC+}$ , and the voltage swing,  $V_{DAC+}$ , are defined by the designer, which sets a target value for  $Z_{DAC+}$ .
2. An existing circuit voltage or other known voltage is used for  $V_{REF}$ .
3. In a difference amplifier,  $R_3/R_2$  needs to equal  $R_F/R_G$  to balance the gain of the amplifier.\*
4. The equations will be solved for the condition where the DAC current on the positive side is zero:  $I_{DAC+} = 0$  mA. This in turn sets the DAC voltage on the positive side to its maximum value,  $V_{DAC+} = V_{DAC+}(\text{max})$ .

With these constraints, the designer can apply algebra and simultaneous-equation techniques to Equations 1 and 2 to solve for  $1/R_1$ :

$$\frac{1}{R_1} = \frac{1}{Z_{DAC+} \left( 1 + \frac{1}{\frac{V_{REF}}{V_{DAC+}(\text{max})} - 1} \right)} - \frac{1}{R_2 + R_3} \quad (3)$$

\*Note that in a voltage-feedback op amp, it is desirable to make the impedance at  $V_p$  equal to that at  $V_n$  in order to cancel voltage offset caused by the input bias current. In a current-feedback op amp, the input bias currents are not correlated; so it is acceptable not to balance these impedances, but it may be desirable to minimize them.

Figure 4. Positive side of analysis circuit



The known value for  $R_1$  can be substituted into Equation 2, which can then be rearranged to find  $1/R_X$ :

$$\frac{1}{R_X} = \frac{1}{Z_{DAC+}} - \frac{1}{R_1} - \frac{1}{R_2 + R_3} \quad (4)$$

### Analysis of negative side

The negative half of the circuit is shown in Figure 5.

Analysis of the negative side is complicated, because  $V_n$  is driven not only by the negative side of the DAC but also by the positive side via the op amp's action. To start the analysis, Kirchhoff's current law can be used to write a node equation at  $V_{DAC-}$ :

$$I_{DAC-} + \frac{V_{DAC-} - V_{REF}}{R_Y} + \frac{V_{DAC-}}{R_4} + \frac{V_{DAC-} - V_n}{R_G + R_3} = 0 \quad (5)$$

The input impedance can be expressed as

$$Z_{DAC-} = \frac{V_{DAC-}}{I_{DAC-}}. \quad (6)$$

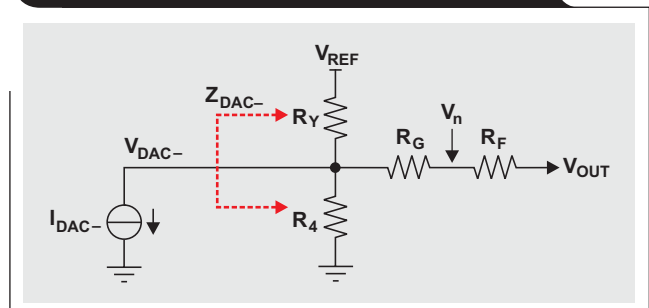
With substitution and rearrangement, the designer can use

$$V_p = V_{DAC+} \times \frac{R_3}{R_2 + R_3}$$

and  $V_n = \alpha V_p$  to rewrite Equation 6 as

$$\frac{1}{Z_{DAC-}} = \frac{1}{Z_{DAC+} \times \alpha \left( \frac{R_3}{R_2 + R_3} \right)} \times \left( \frac{1}{R_Y} + \frac{1}{R_4} + \frac{1}{R_G} \right). \quad (7)$$

Figure 5. Negative side of analysis circuit



Using the same substitutions and general design constraints used on the positive side to drive values for  $Z_{DAC-}$ ,  $V_{REF}$ , and  $R_G$ , simultaneous-equation techniques can be applied to Equations 5 and 7 to solve for  $1/R_4$  (Equation 8). Note that the equations are solved for the condition where the DAC current on the negative side is zero:  $I_{DAC-} = 0$  mA. This sets the DAC voltage on the negative side to its maximum value,  $V_{DAC-} = V_{DAC-(max)}$ , and sets the DAC voltage on the positive side to its minimum value,  $V_{DAC+} = V_{DAC+(min)}$ .

$$\frac{1}{R_4} = \frac{1 - \frac{Z_{DAC+} \times \alpha \left( \frac{R_3}{R_2 + R_3} \right)}{R_G}}{Z_{DAC-}} + \frac{\left[ \frac{V_{DAC+(min)} \times \alpha \left( \frac{R_3}{R_2 + R_3} \right) - V_{DAC-(max)}}{V_{REF} - V_{DAC-(max)}} - 1 \right] \left( \frac{1}{R_G} \right)}{\frac{V_{DAC-(max)}}{V_{REF} - V_{DAC-(max)}} + 1} \quad (8)$$

The value of  $1/R_4$  can then be used to find  $1/R_Y$ :

$$\frac{1}{R_Y} = \frac{1 - \frac{Z_{DAC+} \times \alpha \left( \frac{R_3}{R_2 + R_3} \right)}{R_G}}{Z_{DAC-}} - \left( \frac{1}{R_4} + \frac{1}{R_G} \right) \quad (9)$$

Note that  $\alpha$ , the multiplication factor from  $V_p$  to  $V_n$ , in essence expresses the difference between the input pins. In a voltage-feedback amplifier,  $\alpha$  is set by the loop gain of the amplifier. In a current-feedback amplifier,  $\alpha$  is the gain of the input buffer between the inputs. All that aside,  $\alpha$  is typically close enough to 1 that it can simply be removed from the calculation.

### Calculating output voltage

Superposition can be used to write equations for the separate sources referred to  $V_{OUT}$ . Since the DAC only sinks current, which is by convention negative current flow, the output-voltage swing is the opposite of what might be expected. In other words, when the DAC is sinking current on the positive side, the output of the op amp tends to swing negative, and when the DAC is sinking current on the negative side, the output of the op amp tends to swing positive. This means that in the following equations,  $I_{DAC+}$  and  $I_{DAC-}$  are always negative or zero.

The output-referred DC bias from the positive side is

$$V_{OUT\_V_{p(DC)}} = \left( 1 + \frac{R_F}{R_G + R_Y \parallel R_4} \right) \times \left[ V_{REF} \times \frac{R_1 R_3}{R_1 (R_2 + R_3) + R_X (R_1 + R_2 + R_3)} \right]$$

The output-referred DAC signal from the positive side is

$$V_{OUT\_V_{p(DAC)}} = \left( 1 + \frac{R_F}{R_G + R_Y \parallel R_4} \right) \times \left[ I_{DAC+} \times \frac{R_X R_1 R_3}{R_X R_1 + (R_1 + R_X)(R_2 + R_3)} \right]$$

The output-referred DC bias from the negative side is

$$V_{OUT\_V_{n(DC)}} = - \left( V_{REF} \times \frac{R_4}{R_Y + R_4} \times \frac{R_F}{R_G + R_Y \parallel R_4} \right)$$

The output-referred DAC signal from the negative side is

$$V_{OUT\_V_{n(DAC)}} = - \left( I_{DAC-} \times \frac{R_Y R_4 R_F}{R_Y R_4 + R_G R_4 + R_Y R_G} \right)$$

Adding these four equations provides an expression for  $V_{OUT}$ :

$$V_{OUT} = V_{OUT\_V_{p(DC)}} + V_{OUT\_V_{p(DAC)}} + V_{OUT\_V_{n(DC)}} + V_{OUT\_V_{n(DAC)}} \quad (10)$$

If it is assumed that  $I_{DAC} = I_{DAC+} - I_{DAC-}$ ,  $Z = Z_{DAC+} = Z_{DAC-}$ , and  $R_F/R_G = R_3/R_2$ , the DC component of the DAC outputs will cancel and the AC-signal's gain equation from the DAC output current to the voltage output of the op amp can be simplified and written as

$$\frac{V_{OUT}}{I_{DAC}} = 2Z \times \frac{R_F}{R_G} \quad (11)$$

## Design example and simulation

For an example of how to proceed with the design, assume that one of the NMOS DACs noted earlier, with a compliance voltage of  $3.3 \pm 0.5$  V, is being used. Also assume that the full-scale output is set to 20 mA. To get a 5- $V_{PP}$ , DC-coupled single-ended output signal, the circuit shown in Figure 3 can be used. Since a  $\pm 5$ -V power supply is being used for the op amp, it is convenient to make  $V_{REF} = 5$  V. Given that  $I_{DAC\pm} = 20$  mA and  $V_{DAC\pm} = 1$   $V_{PP}$ , the target impedance,  $Z_{DAC\pm}$ , can be calculated to equal 50  $\Omega$ .

With the starting design constraints given earlier, the THS3095 current-feedback op amp is selected as the amplifier, where  $R_3 = R_F = 750$   $\Omega$ . The gain from  $V_{DAC\pm}$  to the output is given by the resistor ratios  $R_F/R_G = R_3/R_2$ , so  $R_G$  can be calculated as

$$R_G = R_2 = R_F \times \frac{V_{DAC\pm}}{V_{OUT}} = 750 \Omega \times \frac{2(1 \text{ V})}{5 \text{ V}} = 300 \Omega.$$

The nearest standard 1% value, 301  $\Omega$ , should be used.

Equations 3, 4, 8, and 9 can be used to find, respectively,  $R_1$ ,  $R_X$ ,  $R_4$ , and  $R_Y$ :

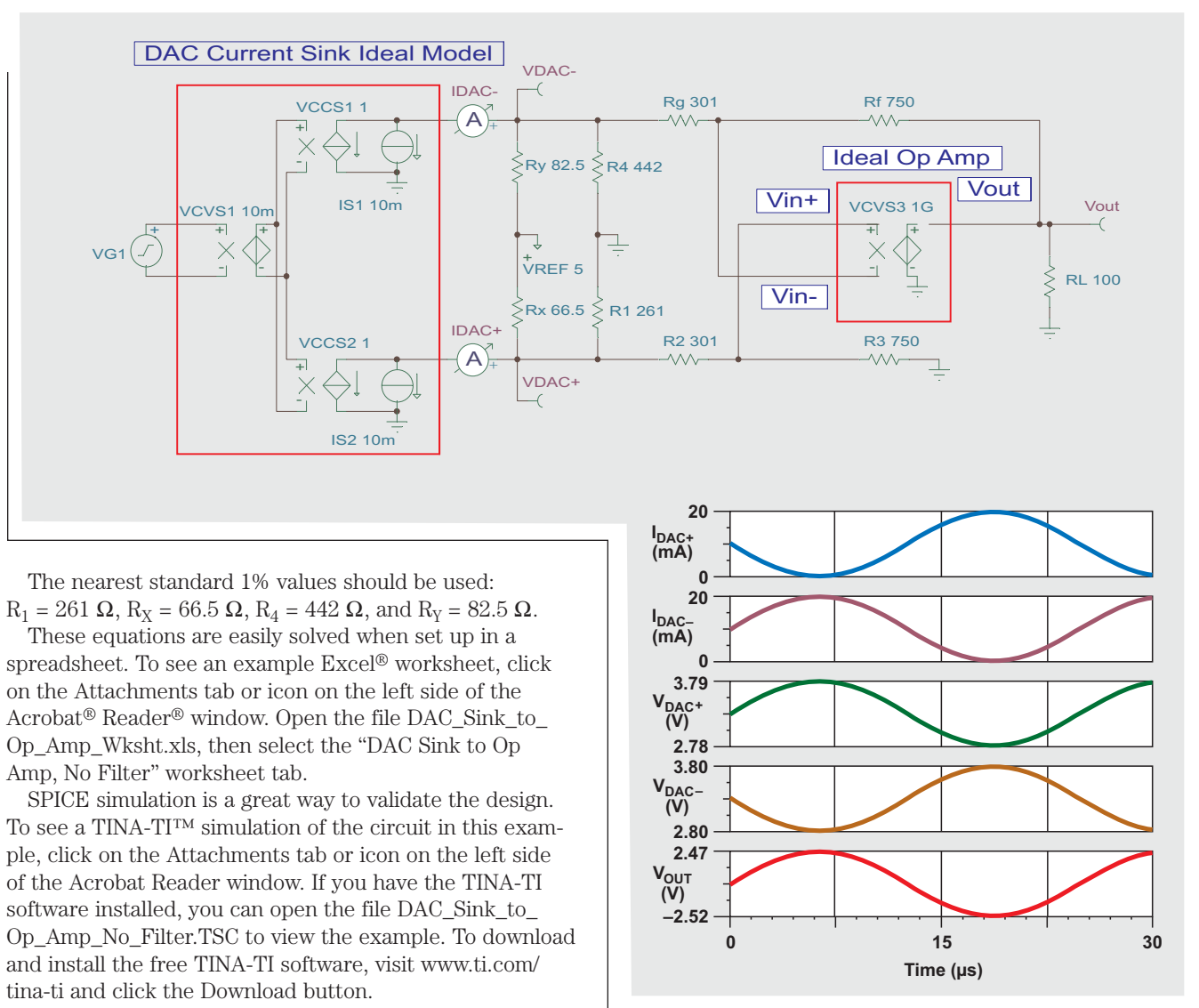
$$R_1 = \frac{1}{\frac{1}{Z_{DAC+} \left( 1 + \frac{1}{\frac{V_{REF}}{V_{DAC+(max)}} - 1} \right)} - \frac{1}{R_2 + R_3}} = \frac{1}{\frac{1}{50 \Omega \left( 1 + \frac{1}{\frac{5 \text{ V}}{3.8 \text{ V}} - 1} \right)} - \frac{1}{301 \Omega + 750 \Omega}} = 259.8 \Omega$$

$$R_X = \frac{1}{\frac{1}{Z_{DAC+}} - \frac{1}{R_1} - \frac{1}{R_2 + R_3}} = \frac{1}{\frac{1}{50 \Omega} - \frac{1}{259.8 \Omega} - \frac{1}{301 \Omega + 750 \Omega}} = 65.8 \Omega$$

$$R_4 = \frac{\frac{V_{DAC-(max)}}{V_{REF} - V_{DAC-(max)}} + 1}{1 - \frac{Z_{DAC+} \times \alpha \left( \frac{R_3}{R_2 + R_3} \right)}{R_G} + \left[ \frac{V_{DAC+(min)} \times \alpha \left( \frac{R_3}{R_2 + R_3} \right) - V_{DAC-(max)}}{V_{REF} - V_{DAC-(max)}} - 1 \right] \left( \frac{1}{R_G} \right)}$$

$$= \frac{\frac{3.8 \text{ V}}{5 \text{ V} - 3.8 \text{ V}} + 1}{1 - \frac{50 \Omega \times 1 \times \frac{750 \Omega}{301 \Omega + 750 \Omega}}{301 \Omega} + \left( \frac{2.8 \text{ V} \times 1 \times \frac{750 \Omega}{301 \Omega + 750 \Omega} - 3.8 \text{ V}}{5 \text{ V} - 3.8 \text{ V}} - 1 \right) \left( \frac{1}{301 \Omega} \right)} = 447.2 \Omega$$

$$R_Y = \frac{1}{\frac{Z_{DAC+} \times \alpha \left( \frac{R_3}{R_2 + R_3} \right)}{R_G} - \left( \frac{1}{R_4} + \frac{1}{R_G} \right)} = \frac{1}{1 - \frac{50 \Omega \times 1 \times \frac{750 \Omega}{301 \Omega + 750 \Omega}}{301 \Omega} - \left( \frac{1}{447.2 \Omega} + \frac{1}{301 \Omega} \right)} = 82.9 \Omega$$

**Figure 6. Simulation of current-sinking DAC interfaced to op amp**

The nearest standard 1% values should be used:  
 $R_1 = 261\Omega$ ,  $R_x = 66.5\Omega$ ,  $R_4 = 442\Omega$ , and  $R_y = 82.5\Omega$ .

These equations are easily solved when set up in a spreadsheet. To see an example Excel® worksheet, click on the Attachments tab or icon on the left side of the Acrobat® Reader® window. Open the file DAC\_Sink\_to\_Op\_Amp\_Wksht.xls, then select the “DAC Sink to Op Amp, No Filter” worksheet tab.

SPICE simulation is a great way to validate the design. To see a TINA-TI™ simulation of the circuit in this example, click on the Attachments tab or icon on the left side of the Acrobat Reader window. If you have the TINA-TI software installed, you can open the file DAC\_Sink\_to\_Op\_Amp\_No\_Filter.TSC to view the example. To download and install the free TINA-TI software, visit [www.ti.com/tina-ti](http://www.ti.com/tina-ti) and click the Download button.

The simulation circuit and waveforms in Figure 6 show that the circuit simulates as expected.  $I_{DAC+}$  and  $I_{DAC-}$  are the DAC currents,  $V_{DAC+}$  and  $V_{DAC-}$  are the voltages developed at the DAC outputs, and  $V_{OUT}$  is the output of the amplifier. The current-sinking DAC and op amp are ideal elements constructed with SPICE macros and are intended to show that the equations derived earlier for  $R_1$ ,  $R_x$ ,  $R_4$ , and  $R_y$  are valid for ideal elements. Actual performance will vary depending on selected devices.

### DAC image-filter considerations

The DAC output signal will have the desired baseband signal as well as the sampling images that occur at multiples of the sampling frequency. Filtering is usually used to reduce the amplitude of the sampling images because they degrade performance. Filtering directly at the DAC output

before the op amp will preserve the best performance. This is especially important with multitone signals where second-order intermodulation products from the sampling images appear at the baseband.

Filter design is not the topic of this article, so it will not be covered in much detail; but for proper operation the filter component values are calculated based on the input and output impedances seen by the filter. While finding the exact value of the impedance is not so troublesome, it is usually much easier to find standard component values to implement the filter when the input and output impedances to the filter are equal. With this in mind, let's now consider how to achieve the same goals as before while keeping the impedance seen by the filter balanced.

Figure 7 shows the proposed circuit implementation.  $R_1$ ,  $R_X$ ,  $R_4$ , and  $R_Y$  have been replaced with prime and double-prime components on either side of the filter, where

$$\begin{aligned} R_1 &= R'_1 \parallel R''_1, \\ R_X &= R'_X \parallel R''_X, \\ R_4 &= R'_4 \parallel R''_4, \text{ and} \\ R_Y &= R'_Y \parallel R''_Y. \end{aligned}$$

With the additional constraint that the impedance seen on each terminal of the filter is  $2 \times Z_{\text{DAC}\pm}$ , the following equations can be derived after quite a lot of algebra:

$$\frac{1}{R'_1} = \frac{1}{2Z_{\text{DAC}+} \left( 1 + \frac{1}{\frac{V_{\text{REF}}}{V_{\text{DAC}+(\text{max})}} - 1} \right)} \quad (12)$$

$$\frac{1}{R''_1} = \frac{1}{2Z_{\text{DAC}+} \left( 1 + \frac{1}{\frac{V_{\text{REF}}}{V_{\text{DAC}+(\text{max})}} - 1} \right)} - \frac{1}{R_2 + R_3} \quad (13)$$

$$\frac{1}{R'_X} = \frac{1}{2Z_{\text{DAC}+}} - \frac{1}{R'_1} \quad (14)$$

$$\frac{1}{R''_X} = \frac{1}{2Z_{\text{DAC}+}} - \frac{1}{R'_1} - \frac{1}{R_2 + R_3} \quad (15)$$

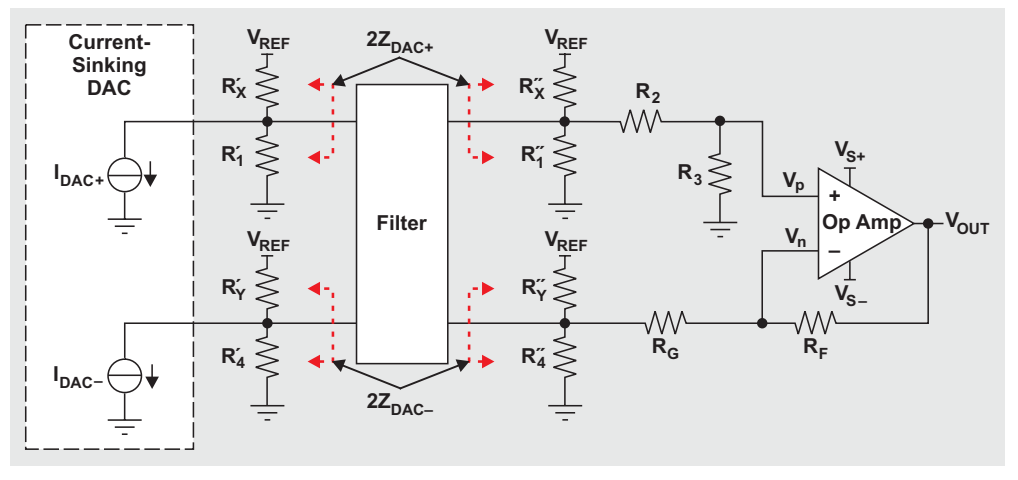
$$\frac{1}{R'_4} = \frac{\left[ \frac{Z_{\text{DAC}+} \times \alpha \left( \frac{R_3}{R_2 + R_3} \right)}{1 - \frac{R_3}{R_2 + R_3}} \right]}{\frac{2Z_{\text{DAC}-}}{V_{\text{DAC}-(\text{max})} - V_{\text{REF}} + 1}} \quad (16)$$

$$\frac{1}{R''_4} = \frac{\frac{Z_{\text{DAC}+} \times \alpha \left( \frac{R_3}{R_2 + R_3} \right)}{1 - \frac{R_3}{R_2 + R_3}}}{\frac{2Z_{\text{DAC}-}}{V_{\text{DAC}-(\text{max})} - V_{\text{REF}} + 1}} + \left[ \frac{V_{\text{DAC}+(\text{min})} \times \alpha \left( \frac{R_3}{R_2 + R_3} \right) - V_{\text{DAC}-(\text{max})}}{V_{\text{REF}} - V_{\text{DAC}-(\text{max})}} - 1 \right] \left( \frac{1}{R_G} \right) \quad (17)$$

$$\frac{1}{R'_Y} = \frac{\frac{Z_{\text{DAC}+} \times \alpha \left( \frac{R_3}{R_2 + R_3} \right)}{1 - \frac{R_3}{R_2 + R_3}}}{2Z_{\text{DAC}-}} - \frac{1}{R'_4} \quad (18)$$

$$\frac{1}{R''_Y} = \frac{\frac{Z_{\text{DAC}+} \times \alpha \left( \frac{R_3}{R_2 + R_3} \right)}{1 - \frac{R_3}{R_2 + R_3}}}{2Z_{\text{DAC}-}} - \left( \frac{1}{R'_4} + \frac{1}{R_G} \right) \quad (19)$$

**Figure 7. Inserting DAC image filter**



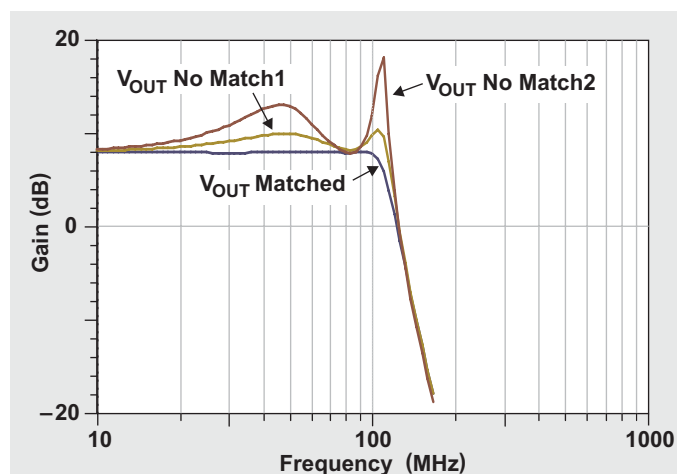
These equations are easily solved when set up in a spreadsheet. To see an example Excel worksheet, click on the Attachments tab or icon on the left side of the Acrobat Reader window. Open the file DAC\_Sink\_to\_Op\_Amp\_Wksht.xls, then select the “DAC Sink to Op Amp, With Filter” worksheet tab.

SPICE simulation is a great way to validate the design. To see a TINA-TI simulation comparing results with a filter used in the circuit, click on the Attachments tab or icon on the left side of the Acrobat Reader window. If you have the TINA-TI software installed, you can open the file DAC\_Sink\_to\_Op\_Amp\_With\_Filter.TSC to view the example. To download and install the free TINA-TI software, visit [www.ti.com/tina-ti](http://www.ti.com/tina-ti) and click the Download button. To show

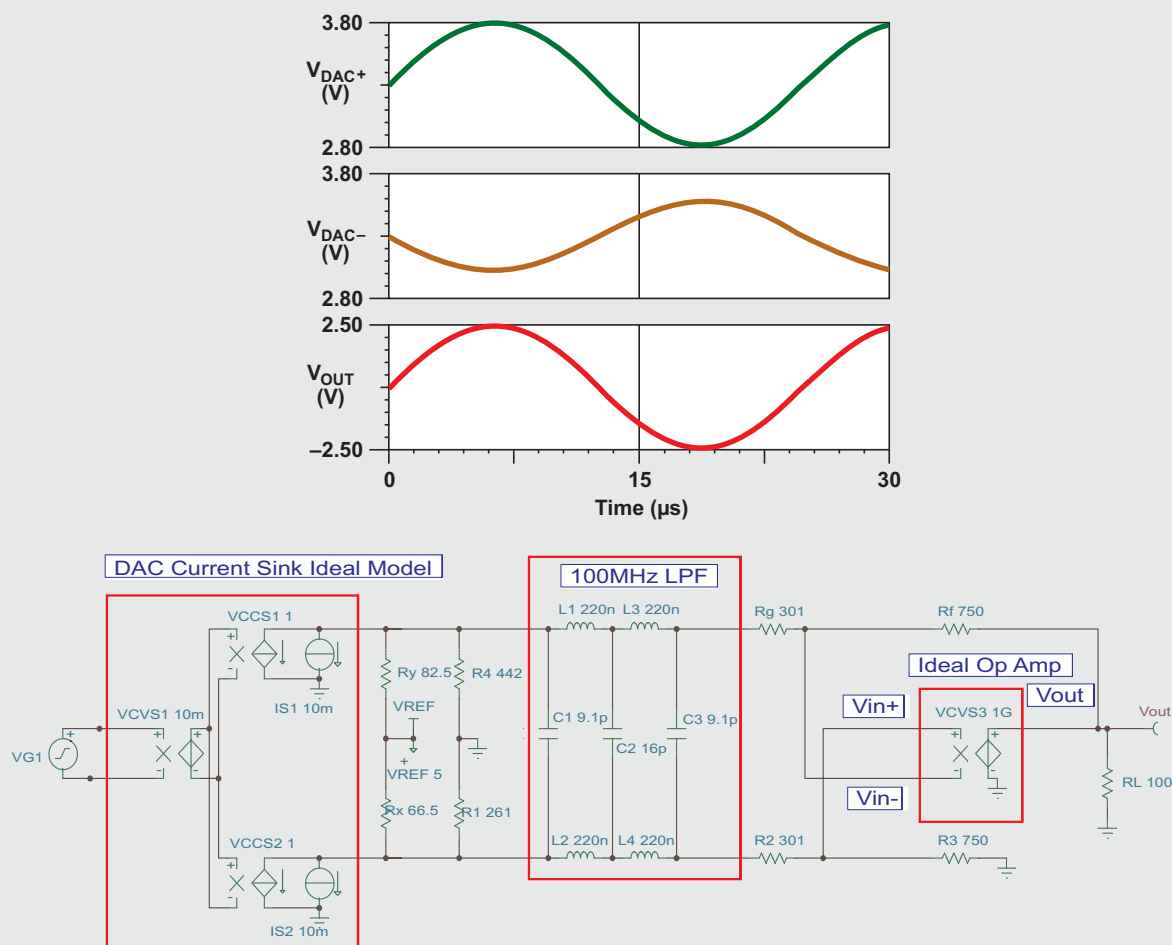
the effects of balancing the filter impedance, a 100-MHz differential filter designed for 100- $\Omega$  input and output impedance is inserted into the interface of the DAC and op amp. In the top circuit, the filter is inserted between the bias resistors and amplifier gain resistors with no regard for balancing the impedance; the output is labeled “V<sub>OUT</sub> No Match1.” In the bottom circuit, the filter is inserted between the DAC and the bias resistors with no regard for balancing the impedance; the output is labeled “V<sub>OUT</sub> No Match2.” In the center circuit, the bias network is designed for 100- $\Omega$  balanced impedance; the output is labeled “V<sub>OUT</sub> Matched.” The transient simulation waveforms look the same as those shown in Figure 6 for each of these circuits, but simulation of an AC transfer function (see Figure 8) shows that the unmatched implementations result in significant ripple in the frequency response while the matched design performs as desired.

During design of the Texas Instruments TSW3070 evaluation board, a circuit was derived as shown in Figure 9 that appears to be well-balanced and that provides for proper impedance matching to the

**Figure 8. Simulation of AC transfer function with matched vs. unmatched filter implementations**



**Figure 9. Original TSW3070 circuit simulation (not balanced)**





100-MHz low-pass filter (LPF). However, the circuit's simulation waveforms show that the impedances seen by the outputs of the DAC are not balanced and that the voltage at  $V_{DAC+}$  is not the mirror image of that at  $V_{DAC-}$ . Per the last example given, this circuit was modified to balance the impedances for the DAC and the LPF. Performance of the second and third harmonics was tested before and after the modification, and the results (shown in Figure 10) show as much as a 10-dB improvement in the second harmonics (depending on the frequency) with basically no change in the third harmonics.

## Conclusion

This article has shown a circuit implementation using a single-stage op amp to convert complementary-current

outputs from a current-sinking DAC to a single-ended voltage. Equations were derived and a methodology presented for proper selection of component values to set the DAC's output-voltage compliance while maintaining balanced input signals to the op amp for best overall performance. Filter-design considerations were also included to explain proper insertion when filtering before the amplifier is desired.

## Related Web sites

[amplifier.ti.com](http://amplifier.ti.com)

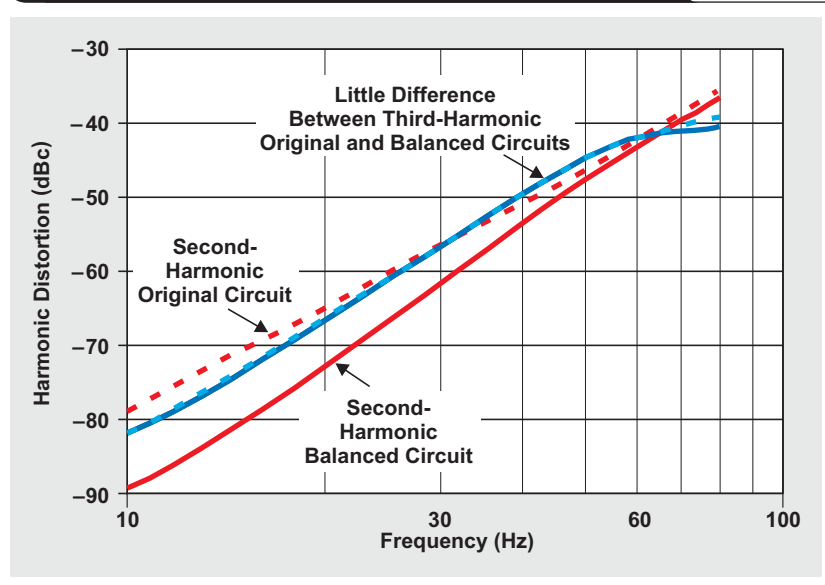
[www.ti.com/sc/device/partnumber](http://www.ti.com/sc/device/partnumber)

Replace *partnumber* with DAC5675A, DAC5681, DAC5682Z, DAC5686, DAC5687, DAC5688, or THS3095

[www.ti.com/tina-ti](http://www.ti.com/tina-ti)

[www.ti.com/tsw3070](http://www.ti.com/tsw3070)

**Figure 10. Harmonic distortion with balanced versus unbalanced impedance**





# Using the infinite-gain, MFB filter topology in fully differential active filters

By Thomas Kuehl

*Senior Applications Engineer*

Active filters are commonly employed in analog signal-conditioning applications. Some of the more common applications include tailoring a signal's bandwidth to reduce noise. One example of this is a low-pass anti-aliasing filter in front of an analog-to-digital converter (ADC); another is an anti-imaging filter that follows the output of a delta-sigma digital-to-analog converter (DAC) to remove unwanted high-frequency content. These filters—most commonly low-pass, high-pass, and band-pass filters—are often used to manage the amplitude response within a particular frequency range. The amplitude response may be tailored to track a particular pass-band or stop-band characteristic such as one provided by a Butterworth, Chebyshev, or Bessel filter. Filter-synthesis software is available from several sources, including Texas Instruments (TI). The synthesis programs and various on-line calculators allow for quick realization of practical filter designs. TI's FilterPro™ software accommodates all of the filters just mentioned.

Differential-amplifier and differential-input mixed-signal circuits such as ADCs are recognized for their inherent ability to reject common-mode signals and noise.<sup>1</sup> This ability provides a distinct advantage over the performance of single-ended-input/output ADCs, where unintended noise and signals may be processed along with the intended signal. Both the circuit complexity and the passive component count increase for a differential circuit, but maximizing system performance may easily justify the increased complexity. Like the basic differential-amplifier stages, differential active filters reject common-mode signals.

Designers often need to filter a signal as it is processed through the circuit's signal chain. In most instances the application calls for a low-pass filter. Other filters such as the band-pass, high-pass, band-reject, or an all-pass (used to create a specific time delay) are sometimes needed, but not nearly as often as the low-pass filter.

The Sallen-Key and infinite-gain, multiple-feedback (MFB) filter topologies are well-documented in filter literature, books, and on-line resources. Their popularity may stem from the fact that they require only one operational amplifier per second-order stage. Alternate topologies are available that provide a very precise filter response and offer lower component sensitivity; but they require two to four operational amplifiers per second-order stage, plus several additional precise passive components. Using one or more cascaded Sallen-Key or MFB stages often provides the necessary level of filter performance without resorting to more complex topologies.

The MFB configuration is one of the few topologies that readily lends itself to an application requiring a fully differential active filter because typical feedback paths run from the amplifier output back to only one input circuit—the inverting input circuit. The noninverting input is either biased at a common-mode potential or grounded, and no feedback is applied to it in its most common connection. The basic single-ended MFB filter topology can be used as the basis for developing a differential filter that has equivalent response characteristics. Nearly all other filter topologies require one or more feedback paths to each input of the operational amplifiers and are therefore more difficult to apply.

## Transforming a single-ended-input/output filter into a fully differential filter

Filter handbooks and software don't always include topologies for differential filters, so knowing how to convert a single-ended-input/output filter to a fully differential filter when needed can save design time. For example, TI's FilterPro includes a provision for selecting a fully differential low-pass or high-pass filter but not a fully differential band-pass filter. Suppose the latter is needed. A basic single-ended MFB filter created with FilterPro can be used

as a starting point. The 10-kHz second-order Butterworth filter ( $Q = 0.707$ ) shown in Figure 1 is used here as an example. Butterworth filters have a maximally flat pass-band response, which is a desirable trait for most analog signal paths. A higher-order Butterworth filter further flattens the pass-band response and provides higher attenuation in the stop band. The second-order filter used in this example provides an amplitude roll-off rate of  $-40$  dB/decade, beyond the  $-3$ -dB cutoff frequency. For now, a value of  $100$  nF is selected for  $C_2$ , and all the other components are allowed to float to their calculated values. FilterPro allows the designer to enter a capacitor value or a seed value for the input resistor; in this case,  $C_2$ 's value of  $100$  nF is entered. Once the filter requirements are entered into the program, the resulting values are displayed within a schematic of the filter.

A helpful FilterPro feature is that it selects standard capacitance values and then calculates the required resistances that meet the filter response. Often the resistor values are within the range of resistors with 1% tolerance. Capacitors with a tolerance of better than 5%, such as 2 or 1%, have limited availability. Resistors, by comparison, are commonly available with a tolerance of 1% and even 0.1%. Therefore, most of the filter component values can be

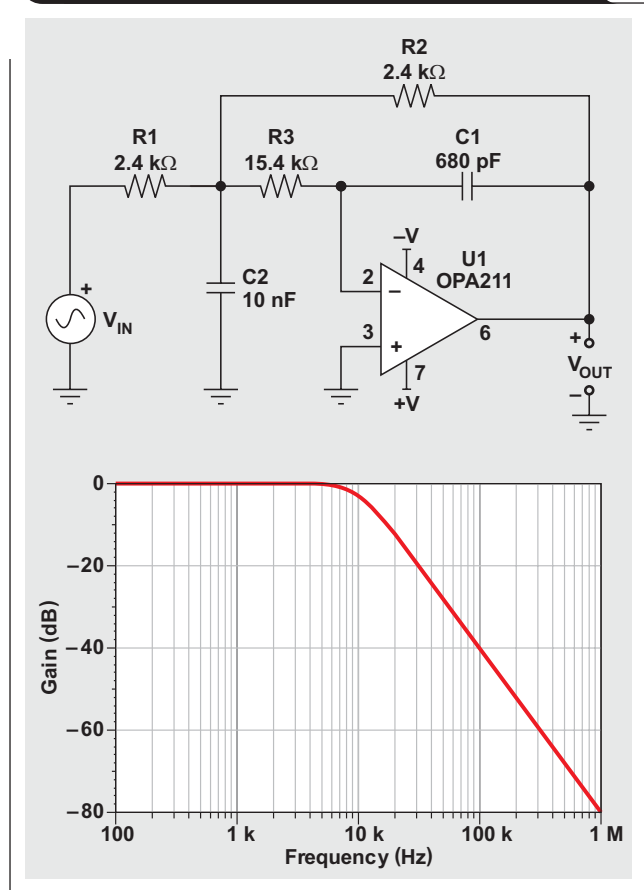
covered without resorting to parallel or series combinations; but keep in mind that components with tight tolerances are required if a precise filter response is to be achieved.

The 10-kHz Butterworth low-pass filter shown in Figure 1 uses an OPA211 precision operational amplifier, which is well suited for this application because of its wide bandwidth and high gain at the filter's critical frequencies. Other operational amplifiers will also work but must have sufficient gain bandwidth (GBW) to support the filter's performance. More will be mentioned about this later.

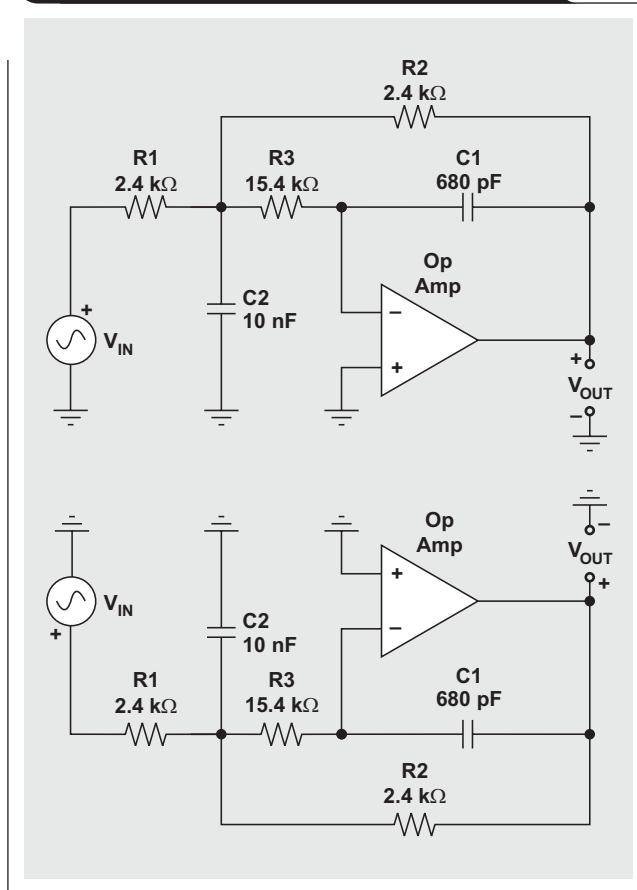
Transforming the single-ended-input/output low-pass filter to a fully differential filter is really quite simple. The procedure is as follows: (1) Create a mirror of the single-ended filter circuit; (2) combine the circuit elements that connect to ground; and (3) replace the operational amplifier and its mirror with a fully differential operational amplifier. Viewing the circuit in Figure 2, which shows the single-ended low-pass filter and its mirror, aids understanding of this procedure.

The fully differential amplifier does not require the ground reference that a conventional operational amplifier uses, so the ground points in the circuit are no longer needed. Also, when the mirror was created, an extra input-voltage source and output meter were created; they

**Figure 1. A 10-kHz single-ended Butterworth MFB input/output low-pass filter**



**Figure 2. Mirroring the single-ended MFB input/output low-pass filter**

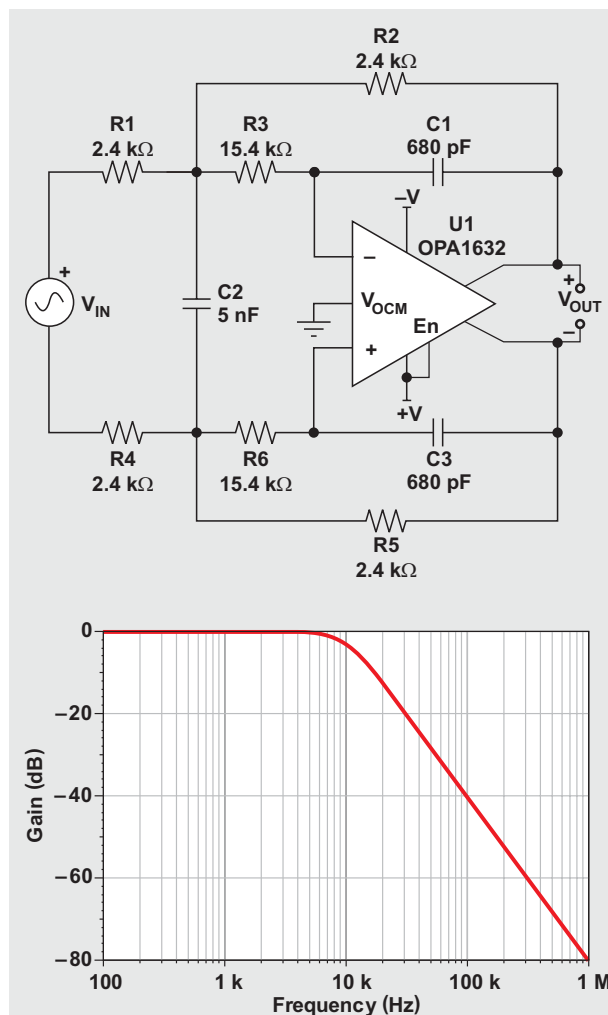


are redundant and not required either. The capacitor C2 and the mirrored C2 are required, but their individual reactances can be combined in one capacitor. Once their ground connections are removed and they are connected together, they form a series connection. Therefore, C2 becomes common to both sides of the filter's input circuit, and its value is half of the original value. In the original low-pass filter, C2 had a value of 10 nF, but once the filter has been transformed, C2's final value is 5 nF. Lastly, the two conventional operational amplifiers are removed and replaced with one fully differential operational amplifier. In this case, a high-performance audio OPA1632 is selected. The transformed fully differential second-order low-pass filter is shown in Figure 3. A plot of gain versus frequency shows that the response is exactly the same for the fully differential and the single-ended filters.

By now it may be apparent why the value of C2 was pre-set to 10 nF. When a low-pass filter undergoes the transformation process, the capacitor ends up at half the original value. Selecting a capacitor value of 10 nF or 20 nF results in a transformed capacitor value of 5 nF or 10 nF, respectively. All of these are standard capacitor values. If C2 had originally been 4.7 nF, the transformed value would have been 2.35 nF, which isn't a standard value. Fortunately, when FilterPro synthesizes a fully differential filter, it always selects standard capacitor values and adjusts the resistor values to provide the correct response.

The transformation procedure may be just as easily applied to high-pass and band-pass filters. The resistors and capacitors of these filters lie in different positions within the MFB circuit than do those of low-pass filters. As a result, instead of the one capacitor and its mirror being reduced to one capacitor, a resistor and its mirror are combined into one resistor. That resistor requires twice the resistance of that used by the single-ended filter.

**Figure 3. A transformed 10-kHz fully differential second-order Butterworth low-pass filter**



**Figure 4. A 10-kHz ( $Q = 10$ ) fully differential second-order Butterworth band-pass filter**

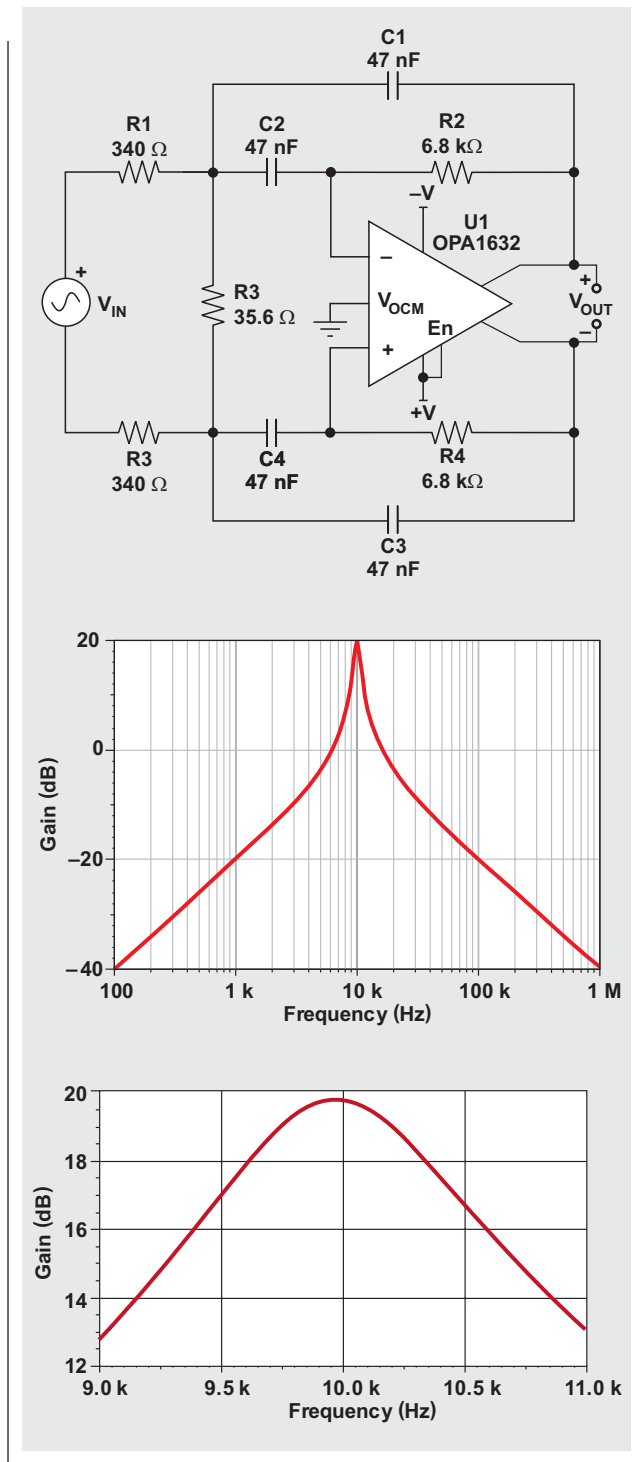


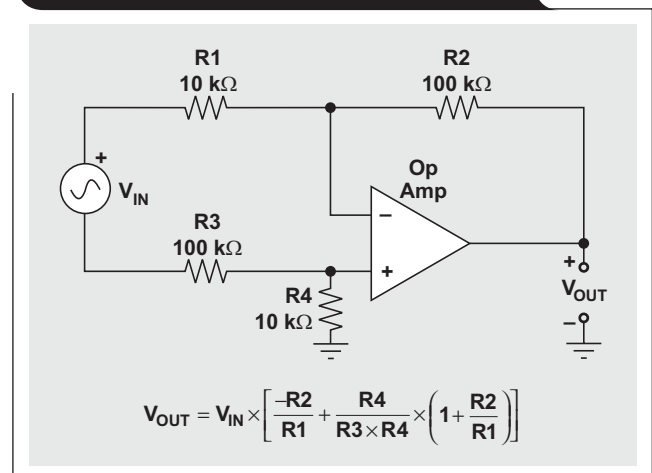
Figure 4 provides an example of a band-pass filter with a center frequency of 10 kHz, a -3-dB bandwidth of 1 kHz, and a gain of 10 V/V, with  $Q_{bp} = 10$  ( $f_C/BW_{-3dB}$ ). This filter was transformed via the same steps described earlier for the low-pass fully differential filter. Keep in mind that R3 is double the resistance required in a single-ended filter.

### The differential-input, single-ended-output active filter

Up to this point, single-ended-input/output and fully differential active filters have been discussed. There are times, however, when an application requires a filter function provided by a differential input but requires only a single-ended output. System applications sometimes are configured with the input transducer or sensor entering the circuit differentially, while the remainder of the circuitry after the input stage operates in a single-ended fashion. Certainly the fully differential filter could be employed with one or the other output, but the amplifier involved likely offers more capability than is needed. Numerous fully differential operational amplifiers are available, but their parametric variety is limited when compared to the vast selection offered by conventional operational amplifiers. Thus, for the differential-input, single-ended-output filter, a conventional operational amplifier is a logical and often lower-cost option.

The differential-input, single-ended-output filter can be viewed as having similarities to the difference amplifier, which is comprised of a single operational amplifier and four resistors or impedances. An example schematic for a difference amplifier is shown in Figure 5. Note the differential inverting and noninverting inputs and the single-ended output. The ratios of R2 to R1 and R3 to R4 are

**Figure 5. The basic difference amplifier**



precisely matched such that the rejection of common-mode signals is maximized, and the amplification of differential signals is achieved with high gain accuracy. When it comes to the filter's case, the components are arranged to provide the differential filter function and to maintain input balance, just as the difference amplifier does.

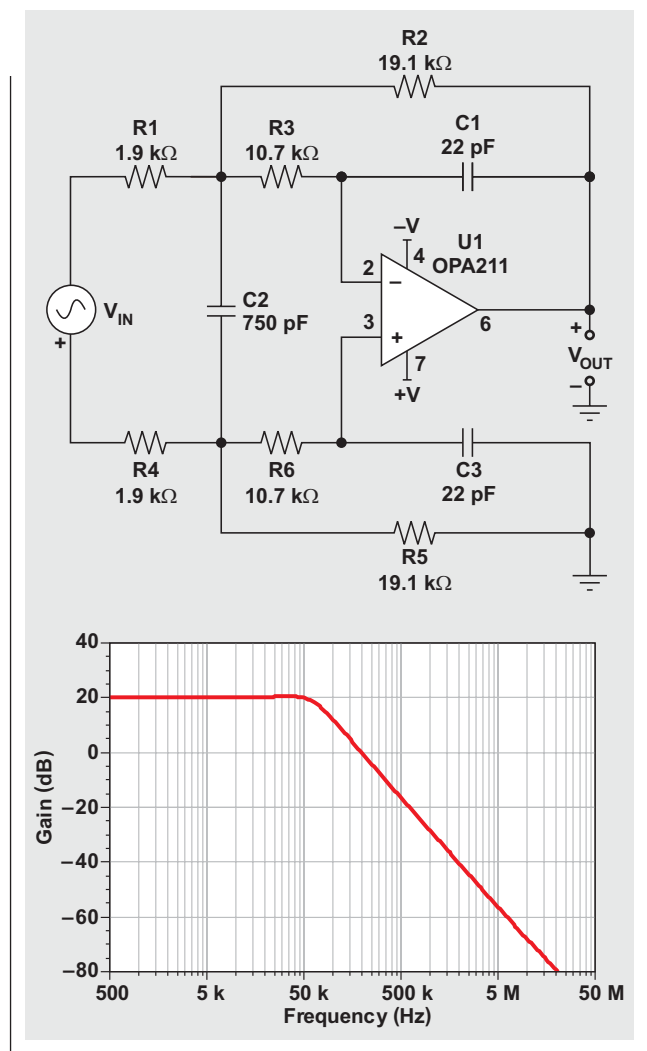
The procedure for transforming the single-ended filter to the differential-input, single-ended-output filter is the same as it was for creating the fully differential filter. A conventional operational amplifier replaces the fully differential operational amplifier and, since there is a single output, the circuit is connected a little differently. Instead of connecting from a differential output back to the noninverting input, the lower feedback network simply connects to ground. Viewing Figure 6 makes the connection easy to understand. The circuit and response are shown for a 50-kHz differential-input, single-ended-output, second-order 0.5-dB Chebyshev filter that has a gain of +10 V/V. The differential-input, single-ended-output configuration can be just as easily applied to band-pass and high-pass filters.

### Considerations for practical active filters

Using filter software such as FilterPro can make designing filters straightforward and easy, but be aware that the component values resulting from such software or even from manual calculations may not always be completely satisfactory. The resistor and capacitor values derived may place impractical loading on the sensors that drive the filter, or on the operational amplifiers used in and/or around the filter circuit. This includes the input and feedback resistors in the filter. When using fully differential operational amplifiers such as the OPA1632, the designer should review the data sheet before using the feedback resistor value returned by a filter program or calculation. The OPA1632 is a very low-noise operational amplifier with a noise spectral density of about  $1.3 \text{ nV}/\sqrt{\text{Hz}}$  (10 kHz). There may be the temptation to use large-value resistors to minimize capacitances, but those resistors can easily produce noise on their own that exceeds that of the OPA1632. The capacitance associated with amplifier input in conjunction with a large feedback resistance creates a pole in the response that degrades the amplifier's closed-loop bandwidth and phase margin. Therefore wideband amplifiers like the OPA1632 most often use small-value feedback resistors to preserve the amplifier's bandwidth. The same precautions must be observed whether the operational amplifier is conventional or fully differential.

Circuit designers are sometimes surprised to find that the filter response of the actual filter is not as expected. The filter exhibits inexact gain, incorrect cutoff or center

**Figure 6. A 50-kHz, differential-input, single-ended-output, second-order 0.5-dB Chebyshev low-pass filter ( $A_V = +10 \text{ V/V}$ )**



frequencies, or incorrect pass-band or stop-band response characteristics. Most often this is the result of the operational amplifier having insufficient closed-loop gain at frequencies critical to the filter's performance. Surprisingly high GBW may be required of the operational amplifier, especially when a filter's operating frequency is increased, the stage gain is high, and the filter must accurately reproduce the pass-band ripple characteristics. For best MFB performance, it is recommended that any one stage's filter Q be 10 or less.

FilterPro performs a GBW calculation for both the low-pass and high-pass filters. The GBW returned is a simple approximation based on the following:

$$\text{GBW}_{\text{Section}} = G \times f_n \times Q,$$

where  $G$  is the section or stage gain ( $V/V$ ),  $f_n$  is the section's natural frequency, and  $Q$  is related to the stage-damping factor,  $Q = 1/(2\zeta)$ . FilterPro provides the  $G$ ,  $f_n$ ,  $Q$ , and GBW product (listed as "GBP") in a table that summarizes the filter characteristics of each stage. This simple approximation may be used as a starting point for the other filter responses as well. More exacting GBW results may be obtained from the formulas listed in Reference 2.

Fortunately, some operational amplifiers have SPICE simulation models that accurately model the AC and transient behaviors. That is the case for both the OPA211 and OPA1632 mentioned in this article. Once the particular filter has been defined and synthesized, the filter components and operational amplifiers can be tested with a simulator such as TI's TINA-TI™ or one of the many other SPICE-based simulators.

The test run should provide an accurate account of a particular filter's true AC and transient behaviors. Any unexpected distortions in the filter performance should

become evident from the simulations. Using the simulation approach is a good place to start before the actual filter is built and bench tested. All of the filter responses shown in this article were obtained from TINA-TI SPICE simulations.

## References

For more information related to this article, you can download an Acrobat® Reader® file at [www-s.ti.com/sc/techlit/litnumber](http://www-s.ti.com/sc/techlit/litnumber) and replace "litnumber" with the **TI Lit. #** for the materials listed below.

Document Title	TI Lit. #
1. Jim Karki, "Fully differential amplifiers remove noise from common-mode signals," <i>EDN</i> (November 9, 2000), pp. 149–156.	—
2. Ron Mancini, Ed., "Op Amps for Everyone," Design Reference, Section 16.8.4, pp. 16-53–16-54 . . . . .	slod006

## Related Web sites

[amplifier.ti.com](http://amplifier.ti.com)

[www.ti.com/sc/device/OPA211](http://www.ti.com/sc/device/OPA211)

[www.ti.com/sc/device/OPA1632](http://www.ti.com/sc/device/OPA1632)

[www.ti.com/tina-ti](http://www.ti.com/tina-ti)



# Index of Articles

Title	Issue	Page	Lit. No.
<b>Data Acquisition</b>			
Aspects of data acquisition system design .....	August 1999 .....	1	SLYT191
Low-power data acquisition sub-system using the TI TLV1572 .....	August 1999 .....	4	SLYT192
Evaluating operational amplifiers as input amplifiers for A-to-D converters .....	August 1999 .....	7	SLYT193
Precision voltage references .....	November 1999.....	1	SLYT183
Techniques for sampling high-speed graphics with lower-speed A/D converters.....	November 1999.....	5	SLYT184
A methodology of interfacing serial A-to-D converters to DSPs .....	February 2000.....	1	SLYT175
The operation of the SAR-ADC based on charge redistribution.....	February 2000.....	10	SLYT176
The design and performance of a precision voltage reference circuit for 14-bit and 16-bit A-to-D and D-to-A converters .....	May 2000 .....	1	SLYT168
Introduction to phase-locked loop system modeling.....	May 2000 .....	5	SLYT169
New DSP development environment includes data converter plug-ins .....	August 2000 .....	1	SLYT158
Higher data throughput for DSP analog-to-digital converters .....	August 2000 .....	5	SLYT159
Efficiently interfacing serial data converters to high-speed DSPs .....	August 2000 .....	10	SLYT160
Smallest DSP-compatible ADC provides simplest DSP interface.....	November 2000.....	1	SLYT148
Hardware auto-identification and software auto-configuration for the TLV320AIC10 DSP Codec — a “plug-and-play” algorithm .....	November 2000.....	8	SLYT149
Using quad and octal ADCs in SPI mode .....	November 2000.....	15	SLYT150
Building a simple data acquisition system using the TMS320C31 DSP .....	February 2001.....	1	SLYT136
Using SPI synchronous communication with data converters — interfacing the MSP430F149 and TLV5616 .....	February 2001.....	7	SLYT137
A/D and D/A conversion of PC graphics and component video signals, Part 1: Hardware .....	February 2001.....	11	SLYT138
A/D and D/A conversion of PC graphics and component video signals, Part 2: Software and control.....	July 2001 .....	5	SLYT129
Intelligent sensor system maximizes battery life: Interfacing the MSP430F123 Flash MCU, ADS7822, and TPS60311 .....	1Q, 2002 .....	5	SLYT123
SHDSL AFE1230 application.....	2Q, 2002 .....	5	SLYT114
Synchronizing non-FIFO variations of the THS1206.....	2Q, 2002 .....	12	SLYT115
Adjusting the A/D voltage reference to provide gain.....	3Q, 2002 .....	5	SLYT109
MSC1210 debugging strategies for high-precision smart sensors .....	3Q, 2002 .....	7	SLYT110
Using direct data transfer to maximize data acquisition throughput.....	3Q, 2002 .....	14	SLYT111
Interfacing op amps and analog-to-digital converters .....	4Q, 2002 .....	5	SLYT104
ADS82x ADC with non-uniform sampling clock .....	4Q, 2003 .....	5	SLYT089
Calculating noise figure and third-order intercept in ADCs .....	4Q, 2003 .....	11	SLYT090
Evaluation criteria for ADSL analog front end.....	4Q, 2003 .....	16	SLYT091
Two-channel, 500-kSPS operation of the ADS8361.....	1Q, 2004 .....	5	SLYT082
ADS809 analog-to-digital converter with large input pulse signal .....	1Q, 2004 .....	8	SLYT083
Streamlining the mixed-signal path with the signal-chain-on-chip MSP430F169.....	3Q, 2004 .....	5	SLYT078
Supply voltage measurement and ADC PSRR improvement in MSC12xx devices.....	1Q, 2005 .....	5	SLYT073
14-bit, 125-MSPS ADS5500 evaluation.....	1Q, 2005 .....	13	SLYT074
Clocking high-speed data converters .....	1Q, 2005 .....	20	SLYT075
Implementation of 12-bit delta-sigma DAC with MSC12xx controller.....	1Q, 2005 .....	27	SLYT076
Using resistive touch screens for human/machine interface.....	3Q, 2005 .....	5	SLYT209A
Simple DSP interface for ADS784x/834x ADCs.....	3Q, 2005 .....	10	SLYT210
Operating multiple oversampling data converters.....	4Q, 2005 .....	5	SLYT222
Low-power, high-intercept interface to the ADS5424 14-bit, 105-MSPS converter for undersampling applications .....	4Q, 2005 .....	10	SLYT223
Understanding and comparing datasheets for high-speed ADCs .....	1Q, 2006 .....	5	SLYT231
Matching the noise performance of the operational amplifier to the ADC .....	2Q, 2006 .....	5	SLYT237
Using the ADS8361 with the MSP430 USI port .....	3Q, 2006 .....	5	SLYT244
Clamp function of high-speed ADC THS1041 .....	4Q, 2006 .....	5	SLYT253
Conversion latency in delta-sigma converters .....	2Q, 2007 .....	5	SLYT264
Calibration in touch-screen systems.....	3Q, 2007 .....	5	SLYT277
Using a touch-screen controller's auxiliary inputs.....	4Q, 2007 .....	5	SLYT283

Title	Issue	Page	Lit. No.
<b>Data Acquisition (Continued)</b>			
Understanding the pen-interrupt (PENIRQ) operation of touch-screen controllers	2Q, 2008	5	SLYT292
A DAC for all precision occasions	3Q, 2008	5	SLYT300
Stop-band limitations of the Sallen-Key low-pass filter	4Q, 2008	5	SLYT306
How the voltage reference affects ADC performance, Part 1	2Q, 2009	5	SLYT331
Impact of sampling-clock spurs on ADC performance	3Q, 2009	5	SLYT338
How the voltage reference affects ADC performance, Part 2	3Q, 2009	13	SLYT339
<b>Power Management</b>			
Stability analysis of low-dropout linear regulators with a PMOS pass element	August 1999	10	SLYT194
Extended output voltage adjustment (0 V to 3.5 V) using the TI TPS5210	August 1999	13	SLYT195
Migrating from the TI TL770x to the TI TLC770x	August 1999	14	SLYT196
TI TPS5602 for powering TI's DSP	November 1999	8	SLYT185
Synchronous buck regulator design using the TI TPS5211 high-frequency hysteretic controller	November 1999	10	SLYT186
Understanding the stable range of equivalent series resistance of an LDO regulator	November 1999	14	SLYT187
Power supply solutions for TI DSPs using synchronous buck converters	February 2000	12	SLYT177
Powering Celeron-type microprocessors using TI's TPS5210 and TPS5211 controllers	February 2000	20	SLYT178
Simple design of an ultra-low-ripple DC/DC boost converter with TPS60100 charge pump	May 2000	11	SLYT170
Low-cost, minimum-size solution for powering future-generation Celeron™-type processors with peak currents up to 26 A	May 2000	14	SLYT171
Advantages of using PMOS-type low-dropout linear regulators in battery applications	August 2000	16	SLYT161
Optimal output filter design for microprocessor or DSP power supply	August 2000	22	SLYT162
Understanding the load-transient response of LDOs	November 2000	19	SLYT151
Comparison of different power supplies for portable DSP solutions working from a single-cell battery	November 2000	24	SLYT152
Optimal design for an interleaved synchronous buck converter under high-slew-rate, load-current transient conditions	February 2001	15	SLYT139
–48-V/+48-V hot-swap applications	February 2001	20	SLYT140
Power supply solution for DDR bus termination	July 2001	9	SLYT130
Runtime power control for DSPs using the TPS62000 buck converter	July 2001	15	SLYT131
Power control design key to realizing InfiniBand <sup>SM</sup> benefits	1Q, 2002	10	SLYT124
Comparing magnetic and piezoelectric transformer approaches in CCFL applications	1Q, 2002	12	SLYT125
Why use a wall adapter for ac input power?	1Q, 2002	18	SLYT126
SWIFT™ Designer power supply design program	2Q, 2002	15	SLYT116
Optimizing the switching frequency of ADSL power supplies	2Q, 2002	23	SLYT117
Powering electronics from the USB port	2Q, 2002	28	SLYT118
Using the UCC3580-1 controller for highly efficient 3.3-V/100-W isolated supply design	4Q, 2002	8	SLYT105
Power conservation options with dynamic voltage scaling in portable DSP designs	4Q, 2002	12	SLYT106
Understanding piezoelectric transformers in CCFL backlight applications	4Q, 2002	18	SLYT107
Load-sharing techniques: Paralleling power modules with overcurrent protection	1Q, 2003	5	SLYT100
Using the TPS61042 white-light LED driver as a boost converter	1Q, 2003	7	SLYT101
Auto-Track™ voltage sequencing simplifies simultaneous power-up and power-down	3Q, 2003	5	SLYT095
Soft-start circuits for LDO linear regulators	3Q, 2003	10	SLYT096
UCC28517 100-W PFC power converter with 12-V, 8-W bias supply, Part 1	3Q, 2003	13	SLYT097
UCC28517 100-W PFC power converter with 12-V, 8-W bias supply, Part 2	4Q, 2003	21	SLYT092
LED-driver considerations	1Q, 2004	14	SLYT084
Tips for successful power-up of today's high-performance FPGAs	3Q, 2004	11	SLYT079
A better bootstrap/bias supply circuit	1Q, 2005	33	SLYT077
Understanding noise in linear regulators	2Q, 2005	5	SLYT201
Understanding power supply ripple rejection in linear regulators	2Q, 2005	8	SLYT202
Miniature solutions for voltage isolation	3Q, 2005	13	SLYT211
New power modules improve surface-mount manufacturability	3Q, 2005	18	SLYT212
Li-ion switching charger integrates power FETs	4Q, 2005	19	SLYT224
TLC5940 dot correction compensates for variations in LED brightness	4Q, 2005	21	SLYT225
Powering today's multi-rail FPGAs and DSPs, Part 1	1Q, 2006	9	SLYT232
TPS79918 RF LDO supports migration to StrataFlash® Embedded Memory (P30)	1Q, 2006	14	SLYT233
Practical considerations when designing a power supply with the TPS6211x	1Q, 2006	17	SLYT234



Title	Issue	Page	Lit. No.
<b>Power Management (Continued)</b>			
TLC5940 PWM dimming provides superior color quality in LED video displays	2Q, 2006	10	SLYT238
Wide-input dc/dc modules offer maximum design flexibility	2Q, 2006	13	SLYT239
Powering today's multi-rail FPGAs and DSPs, Part 2	2Q, 2006	18	SLYT240
TPS61059 powers white-light LED as photoflash or movie light	3Q, 2006	8	SLYT245
TPS65552A powers portable photoflash.	3Q, 2006	10	SLYT246
Single-chip bq2403x power-path manager charges battery while powering system	3Q, 2006	12	SLYT247
Complete battery-pack design for one- or two-cell portable applications	3Q, 2006	14	SLYT248
A 3-A, 1.2-V <sub>OUT</sub> linear regulator with 80% efficiency and P <sub>LOST</sub> < 1 W	4Q, 2006	10	SLYT254
bq25012 single-chip, Li-ion charger and dc/dc converter for Bluetooth® headsets	4Q, 2006	13	SLYT255
Fully integrated TPS6300x buck-boost converter extends Li-ion battery life.	4Q, 2006	15	SLYT256
Selecting the correct IC for power-supply applications.	1Q, 2007	5	SLYT259
LDO white-LED driver TPS7510x provides incredibly small solution size	1Q, 2007	9	SLYT260
Power management for processor core voltage requirements	1Q, 2007	11	SLYT261
Enhanced-safety, linear Li-ion battery charger with thermal regulation and input overvoltage protection	2Q, 2007	8	SLYT269
Current balancing in four-pair, high-power PoE applications.	2Q, 2007	11	SLYT270
Power-management solutions for telecom systems improve performance, cost, and size	3Q, 2007	10	SLYT278
TPS6108x: A boost converter with extreme versatility.	3Q, 2007	14	SLYT279
Get low-noise, low-ripple, high-PSRR power with the TPS717xx	3Q, 2007	17	SLYT280
Simultaneous power-down sequencing with the TPS74x01 family of linear regulators.	3Q, 2007	20	SLYT281
Driving a WLED does not always require 4 V	4Q, 2007	9	SLYT284
Host-side gas-gauge-system design considerations for single-cell handheld applications	4Q, 2007	12	SLYT285
Using a buck converter in an inverting buck-boost topology	4Q, 2007	16	SLYT286
Understanding output voltage limitations of DC/DC buck converters	2Q, 2008	11	SLYT293
Battery-charger front-end IC improves charging-system safety	2Q, 2008	14	SLYT294
New current-mode PWM controllers support boost, flyback, SEPIC, and LED-driver applications	3Q, 2008	9	SLYT302
Getting the most battery life from portable systems.	4Q, 2008	8	SLYT307
Compensating and measuring the control loop of a high-power LED driver	4Q, 2008	14	SLYT308
Designing DC/DC converters based on SEPIC topology	4Q, 2008	18	SLYT309
Paralleling power modules for high-current applications	1Q, 2009	5	SLYT320
Improving battery safety, charging, and fuel gauging in portable media applications	1Q, 2009	9	SLYT321
Cell balancing buys extra run time and battery life.	1Q, 2009	14	SLYT322
Using a portable-power boost converter in an isolated flyback application	1Q, 2009	19	SLYT323
Taming linear-regulator inrush currents.	2Q, 2009	9	SLYT332
Designing a linear Li-Ion battery charger with power-path control	2Q, 2009	12	SLYT333
Selecting the right charge-management solution.	2Q, 2009	18	SLYT334
Reducing radiated EMI in WLED drivers	3Q, 2009	17	SLYT340
<b>Interface (Data Transmission)</b>			
TIA/EIA-568A Category 5 cables in low-voltage differential signaling (LVDS)	August 1999	16	SLYT197
Keep an eye on the LVDS input levels	November 1999	17	SLYT188
Skew definition and jitter analysis.	February 2000	29	SLYT179
LVDS receivers solve problems in non-LVDS applications	February 2000	33	SLYT180
LVDS: The ribbon cable connection	May 2000	19	SLYT172
Performance of LVDS with different cables	August 2000	30	SLYT163
A statistical survey of common-mode noise	November 2000	30	SLYT153
The Active Fail-Safe feature of the SN65LVDS32A	November 2000	35	SLYT154
The SN65LVDS33/34 as an ECL-to-LVTTL converter	July 2001	19	SLYT132
Power consumption of LVPECL and LVDS.	1Q, 2002	23	SLYT127
Estimating available application power for Power-over-Ethernet applications.	1Q, 2004	18	SLYT085
The RS-485 unit load and maximum number of bus connections	1Q, 2004	21	SLYT086
Failsafe in RS-485 data buses	3Q, 2004	16	SLYT080
Maximizing signal integrity with M-LVDS backplanes	2Q, 2005	11	SLYT203
Device spacing on RS-485 buses	2Q, 2006	25	SLYT241
Improved CAN network security with TI's SN65HVD1050 transceiver	3Q, 2006	17	SLYT249

Title	Issue	Page	Lit. No.
<b>Interface (Data Transmission) (Continued)</b>			
Detection of RS-485 signal loss	4Q, 2006	18	SLYT257
Enabling high-speed USB OTG functionality on TI DSPs	2Q, 2007	18	SLYT271
When good grounds turn bad—isolate!	3Q, 2008	11	SLYT298
Cascading of input serializers boosts channel density for digital inputs	3Q, 2008	16	SLYT301
RS-485: Passive failsafe for an idle bus	1Q, 2009	22	SLYT324
Message priority inversion on a CAN bus	1Q, 2009	25	SLYT325
Designing with digital isolators	2Q, 2009	21	SLYT335
<b>Amplifiers: Audio</b>			
Reducing the output filter of a Class-D amplifier	August 1999	19	SLYT198
Power supply decoupling and audio signal filtering for the Class-D audio power amplifier	August 1999	24	SLYT199
PCB layout for the TPA005D1x and TPA032D0x Class-D APAs	February 2000	39	SLYT182
An audio circuit collection, Part 1	November 2000	39	SLYT155
1.6- to 3.6-volt BTL speaker driver reference design	February 2001	23	SLYT141
Notebook computer upgrade path for audio power amplifiers	February 2001	27	SLYT142
An audio circuit collection, Part 2	February 2001	41	SLYT145
An audio circuit collection, Part 3	July 2001	34	SLYT134
Audio power amplifier measurements	July 2001	40	SLYT135
Audio power amplifier measurements, Part 2	1Q, 2002	26	SLYT128
<b>Amplifiers: Op Amps</b>			
Single-supply op amp design	November 1999	20	SLYT189
Reducing crosstalk of an op amp on a PCB	November 1999	23	SLYT190
Matching operational amplifier bandwidth with applications	February 2000	36	SLYT181
Sensor to ADC — analog interface design	May 2000	22	SLYT173
Using a decompensated op amp for improved performance	May 2000	26	SLYT174
Design of op amp sine wave oscillators	August 2000	33	SLYT164
Fully differential amplifiers	August 2000	38	SLYT165
The PCB is a component of op amp design	August 2000	42	SLYT166
Reducing PCB design costs: From schematic capture to PCB layout	August 2000	48	SLYT167
Thermistor temperature transducer-to-ADC application	November 2000	44	SLYT156
Analysis of fully differential amplifiers	November 2000	48	SLYT157
Fully differential amplifiers applications: Line termination, driving high-speed ADCs, and differential transmission lines	February 2001	32	SLYT143
Pressure transducer-to-ADC application	February 2001	38	SLYT144
Frequency response errors in voltage feedback op amps	February 2001	48	SLYT146
Designing for low distortion with high-speed op amps	July 2001	25	SLYT133
Fully differential amplifier design in high-speed data acquisition systems	2Q, 2002	35	SLYT119
Worst-case design of op amp circuits	2Q, 2002	42	SLYT120
Using high-speed op amps for high-performance RF design, Part 1	2Q, 2002	46	SLYT121
Using high-speed op amps for high-performance RF design, Part 2	3Q, 2002	21	SLYT112
FilterPro™ low-pass design tool	3Q, 2002	24	SLYT113
Active output impedance for ADSL line drivers	4Q, 2002	24	SLYT108
RF and IF amplifiers with op amps	1Q, 2003	9	SLYT102
Analyzing feedback loops containing secondary amplifiers	1Q, 2003	14	SLYT103
Video switcher using high-speed op amps	3Q, 2003	20	SLYT098
Expanding the usability of current-feedback amplifiers	3Q, 2003	23	SLYT099
Calculating noise figure in op amps	4Q, 2003	31	SLYT094
Op amp stability and input capacitance	1Q, 2004	24	SLYT087
Integrated logarithmic amplifiers for industrial applications	1Q, 2004	28	SLYT088
Active filters using current-feedback amplifiers	3Q, 2004	21	SLYT081
Auto-zero amplifiers ease the design of high-precision circuits	2Q, 2005	19	SLYT204
So many amplifiers to choose from: Matching amplifiers to applications	3Q, 2005	24	SLYT213
Getting the most out of your instrumentation amplifier design	4Q, 2005	25	SLYT226
High-speed notch filters	1Q, 2006	19	SLYT235
Low-cost current-shunt monitor IC revives moving-coil meter design	2Q, 2006	27	SLYT242
Accurately measuring ADC driving-circuit settling time	1Q, 2007	14	SLYT262

Title	Issue	Page	Lit. No.
<b>Amplifiers: Op Amps (Continued)</b>			
New zero-drift amplifier has an $I_Q$ of 17 $\mu A$ . . . . .	2Q, 2007 . . . . .	22	SLYT272
A new filter topology for analog high-pass filters . . . . .	3Q, 2008 . . . . .	18	SLYT299
Input impedance matching with fully differential amplifiers . . . . .	4Q, 2008 . . . . .	24	SLYT310
A dual-polarity, bidirectional current-shunt monitor. . . . .	4Q, 2008 . . . . .	29	SLYT311
Output impedance matching with fully differential operational amplifiers . . . . .	1Q, 2009 . . . . .	29	SLYT326
Using fully differential op amps as attenuators, Part 1: Differential bipolar input signals . . . . .	2Q, 2009 . . . . .	33	SLYT336
Using fully differential op amps as attenuators, Part 2: Single-ended bipolar input signals . . . . .	3Q, 2009 . . . . .	21	SLYT341
Interfacing op amps to high-speed DACs, Part 1: Current-sinking DACs . . . . .	3Q, 2009 . . . . .	24	SLYT342
Using the infinite-gain, MFB filter topology in fully differential active filters . . . . .	3Q, 2009 . . . . .	33	SLYT343
<b>Low-Power RF</b>			
Using the CC2430 and TIMAC for low-power wireless sensor applications: A power-consumption study . . . . .	2Q, 2008 . . . . .	17	SLYT295
Selecting antennas for low-power wireless applications . . . . .	2Q, 2008 . . . . .	20	SLYT296
<b>General Interest</b>			
Synthesis and characterization of nickel manganite from different carboxylate precursors for thermistor sensors . . . . .	February 2001 . . . . .	52	SLYT147
Analog design tools. . . . .	2Q, 2002 . . . . .	50	SLYT122
Spreadsheet modeling tool helps analyze power- and ground-plane voltage drops to keep core voltages within tolerance . . . . .	2Q, 2007 . . . . .	29	SLYT273

## TI Worldwide Technical Support

### Internet

#### TI Semiconductor Product Information Center Home Page

[support.ti.com](http://support.ti.com)

#### TI Semiconductor KnowledgeBase Home Page

[support.ti.com/sc/knowledgebase](http://support.ti.com/sc/knowledgebase)

### Product Information Centers

<b>Americas</b>	Phone	+1(972) 644-5580
<b>Brazil</b>	Phone	0800-891-2616
<b>Mexico</b>	Phone	0800-670-7544
	Fax	+1(972) 927-6377
	Internet/Email	<a href="http://support.ti.com/sc/pic/americas.htm">support.ti.com/sc/pic/americas.htm</a>

#### Europe, Middle East, and Africa

Phone	
European Free Call	00800-ASK-TEXAS (00800 275 83927)
International	+49 (0) 8161 80 2121
Russian Support	+7 (4) 95 98 10 701

**Note:** The European Free Call (Toll Free) number is not active in all countries. If you have technical difficulty calling the free call number, please use the international number above.

Fax	+49 (0) 8161 80 2045
Internet	<a href="http://support.ti.com/sc/pic/euro.htm">support.ti.com/sc/pic/euro.htm</a>

#### Japan

Fax	International	+81-3-3344-5317
	Domestic	0120-81-0036
Internet/Email	International	<a href="http://support.ti.com/sc/pic/japan.htm">support.ti.com/sc/pic/japan.htm</a>
	Domestic	<a href="http://www.tij.co.jp/pic">www.tij.co.jp/pic</a>

#### Asia

Phone	
International	+91-80-41381665
Domestic	<u>Toll-Free Number</u>
Australia	1-800-999-084
China	800-820-8682
Hong Kong	800-96-5941
India	1-800-425-7888
Indonesia	001-803-8861-1006
Korea	080-551-2804
Malaysia	1-800-80-3973
New Zealand	0800-446-934
Philippines	1-800-765-7404
Singapore	800-886-1028
Taiwan	0800-006800
Thailand	001-800-886-0010
Fax	+886-2-2378-6808
Email	<a href="mailto:tiasia@ti.com">tiasia@ti.com</a> or <a href="mailto:ti-china@ti.com">ti-china@ti.com</a>
Internet	<a href="http://support.ti.com/sc/pic/asia.htm">support.ti.com/sc/pic/asia.htm</a>

**Important Notice:** The products and services of Texas Instruments Incorporated and its subsidiaries described herein are sold subject to TI's standard terms and conditions of sale. Customers are advised to obtain the most current and complete information about TI products and services before placing orders. TI assumes no liability for applications assistance, customer's applications or product designs, software performance, or infringement of patents. The publication of information regarding any other company's products or services does not constitute TI's approval, warranty or endorsement thereof.

A093008

DLP is a registered trademark and Analog eLab, Auto-Track, FilterPro, SWIFT, and TINA-TI are trademarks of Texas Instruments. Acrobat and Reader are registered trademarks of Adobe Systems Incorporated. The *Bluetooth* word mark and logos are owned by the Bluetooth SIG, Inc., and any use of such marks by Texas Instruments is under license. Celeron is a trademark and StrataFlash is a registered trademark of Intel Corporation. Excel is a registered trademark of Microsoft Corporation. InfiniBand is a service mark of the InfiniBand Trade Association. ZigBee is a registered trademark of the ZigBee Alliance. All other trademarks are the property of their respective owners.

SLYT337