

SimpleLink™ Wi-Fi® CC3000

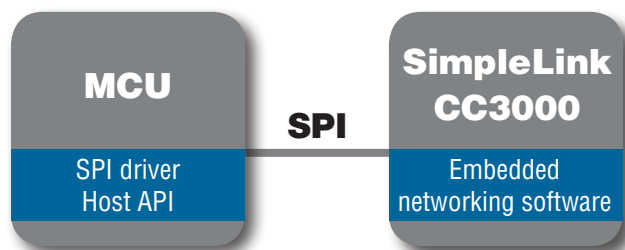
Self-contained Wi-Fi solution enables easy-to-implement Internet connectivity



Overview

SimpleLink™ CC3000 Wi-Fi is a self-contained wireless solution that simplifies the process of implementing Internet connectivity. SimpleLink Wi-Fi minimizes host microcontroller (MCU) software requirements making it the ideal solution for embedded applications using any low-cost/low-power MCU.

The SimpleLink CC3000 Wi-Fi solution is provided as a module to reduce development time, lower manufacturing costs, save board space, ease certification, and minimize RF expertise required. Additionally, TI has created a number of example implementations available in source code for MSP430, Stellaris and other microcontrollers to help accelerate customers time-to-market. These examples include ported software, sample applications, wiki instructions and are accompanied by API and porting guides.



Connecting to low-memory microcontrollers is enabled by complete software integration on CC3000

Module vendor	TI Part number	Orderable part number	Description
LSR	CC3000-TiWi-SL	450-0067	FCC/IC-certified, ETSI-tested module, and U.FL dipole antenna or chip antenna design guide available
Murata	CC3000-TypeVK	LBWA1ZZVK7	FCC/IC-certified, ETSI-tested module, and chip antenna design guide available

Key Features and Benefits

Embedded Wi-Fi and networking software including drivers, stack, and supplicant

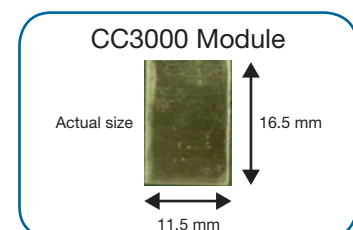
- Universal IP connectivity enabled anywhere
- Pair easily with low-memory, low-cost, low-power microcontroller systems
- Implement Wi-Fi quickly without previous Wi-Fi or RF experience
- Connect to Access Points on the fly with TI's First Time Config

Credible, proven solution with best-in-class link budget

- Longer range than competitors, reliable coverage throughout the entire house
- Proven Wi-Fi interoperability

Complete platform solution and certified modules

- Get started quickly with sample applications on multiple platforms
- Very simple APIs (~35 total), primarily BSD socket
- Wi-Fi, FCC/IC certified and ETSI tested modules
- Comprehensive documentation aids porting to new MCUs in a matter of a few days



▲ Murata TypeVK module shown

CC3000 Specifications

Standards	802.11b/g, Station
RF performance	Tx Power: +20dBm @ 11Mbps (CCK) Rx sensitivity: -89dBm @ 11Mbps (CCK)
Wi-Fi security modes	WEP, WPA / WPA2 (AES and TKIP – Personal)
Embedded networking software	TCP/IP stack (IPv4 - DHCP client, DNS, ARP), Wi-Fi driver, embedded security supplicant Auto transmit calibration
Host interface	SPI @ 16MHz
Shutdown mode	<5uA using FET
Host MCU driver required	As low as 6KB Flash and 3KB RAM host memory requirements

CC3000 / MSP430-FRAM Evaluation Kit

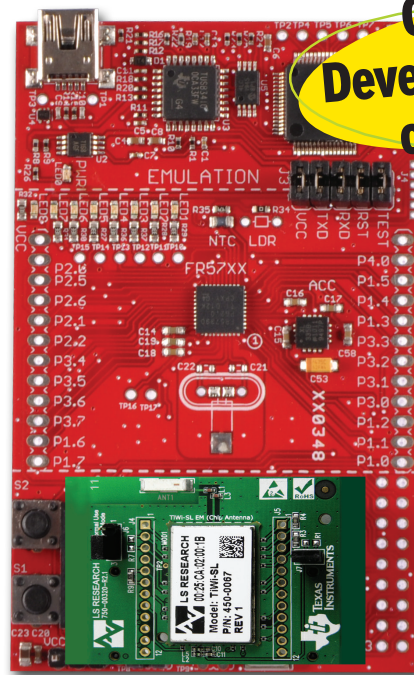
Hardware

- LSR TiWi-SL module & EM board
- Murata TypeVK module & EM board
- Wi-Fi Access Point
- MSP430 FRAM Experimenter Board (MSP-EXP430FR5739)
- USB hub

Implementation Examples (in source code)

- **Sensor application:** Transfer temperature and accelerometer data and show effects of data crossing a threshold
- **Data logger:** Show recorded accelerometer data on PC over time
- **Home automation:** Adjust temperature from anywhere via Twitter using PC app/server. Receive notifications from Twitter if the temperature measures outside of range
- **Basic Wi-Fi application:** Tx/Rx UDP data which connects to access point and can ping (also available for MSP430F5438, F5529, FG4618, and Stellaris® DK-MS3S9B96 and EKS-LM45232)

More evaluation kits coming in 1Q12



Applications

- Automation
- Home Security / Surveillance
- Network Appliance
- Fitness / Health / Medical



CC3000 Resources

- E2E Forum:
www.ti.com/wiconforum
- Wireless Connectivity Wiki:
www.ti.com/connectivitywiki

www.ti.com/simplelink

Module Manufacturers



Hardware and antenna design services
www.lsr.com



Module manufacturing
www.murata-ws.com

Important Notice: The products and services of Texas Instruments Incorporated and its subsidiaries described herein are sold subject to TI's standard terms and conditions of sale. Customers are advised to obtain the most current and complete information about TI products and services before placing orders. TI assumes no liability for applications assistance, customer's applications or product designs, software performance, or infringement of patents. The publication of information regarding any other company's products or services does not constitute TI's approval, warranty or endorsement thereof.