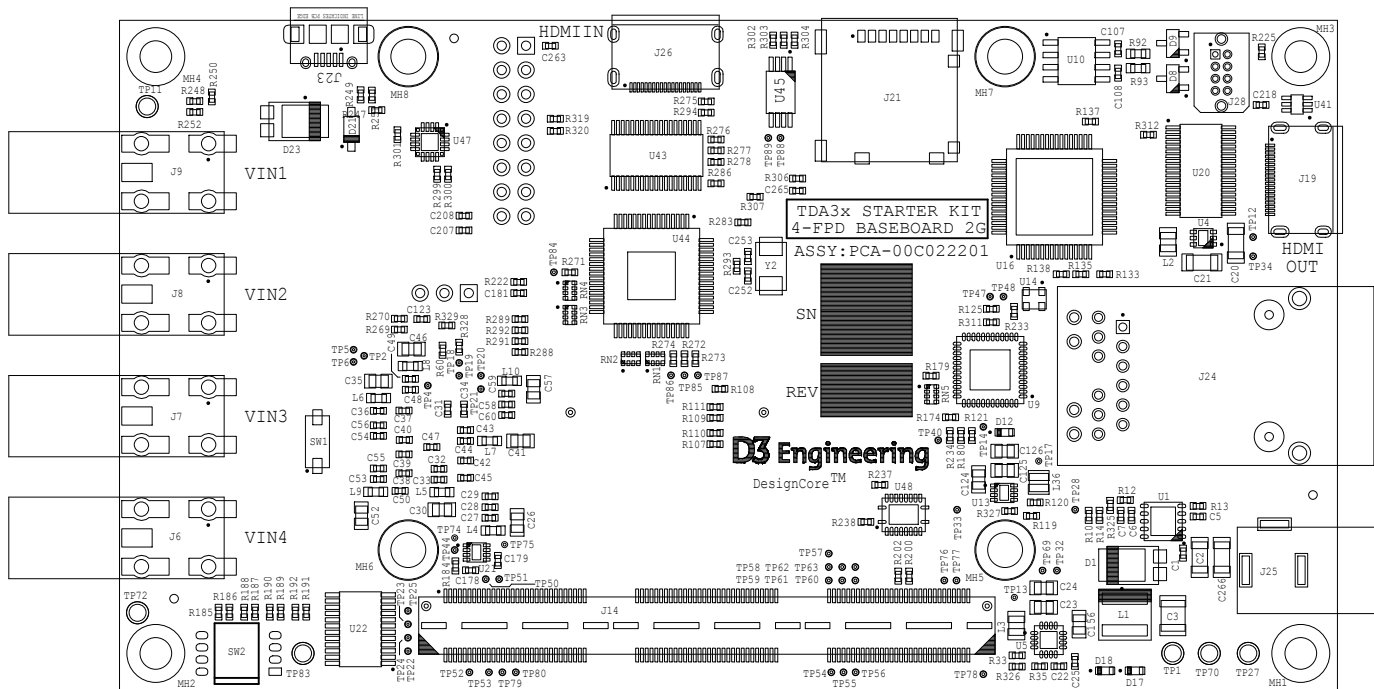


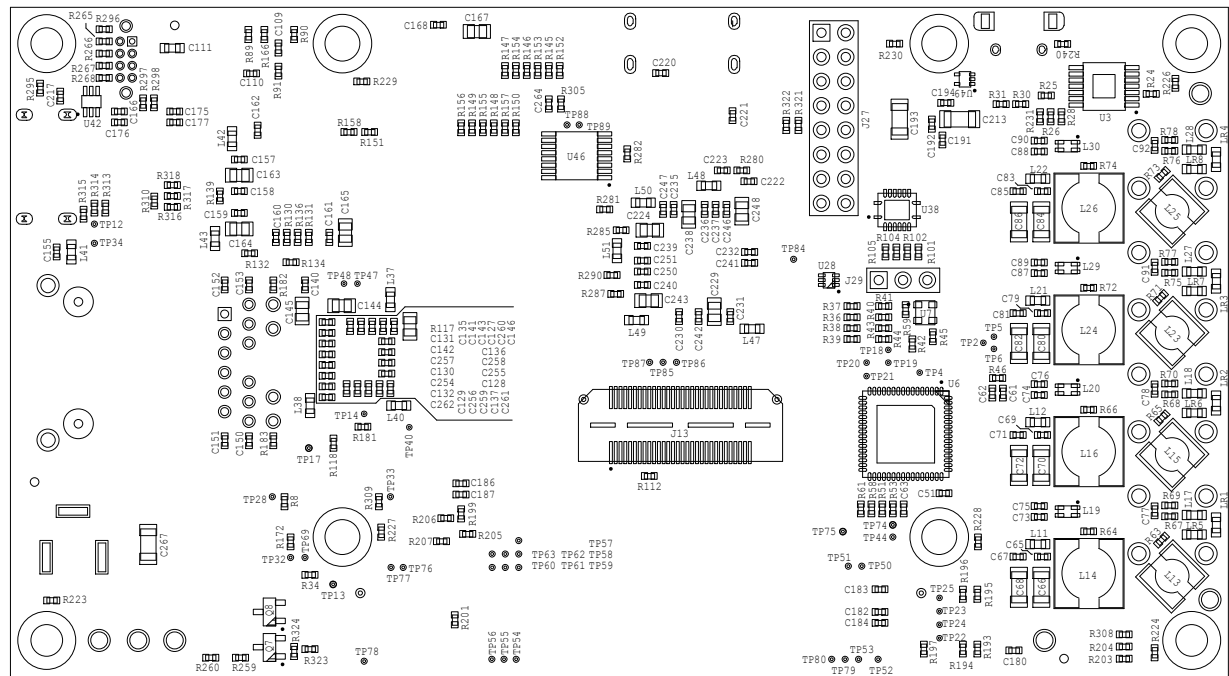
REVISION HISTORY			
REV	DATE	COMMENTS	ENG
1	04/28/17	INITIAL RELEASE	WKM
-	07/19/17	CHANGES PER BUGS 2402 & 2435	WAS

NOTES:

1. WORKMANSHIP TO BE ROHS COMPLIANT AND IN ACCORDANCE WITH (IAW) THE REQUIREMENTS OF IPC-A-610 (LATEST ISSUE), CLASS 2.
2. MARKING
 - 2.1 MARK APPROPRIATE REVISION LEVEL IN AREA PROVIDED. USE MATERIALS AND METHODS AS OUTLINED IN MIL-STD-130 (LATEST ISSUE), SECTION 4.0, GENERAL REQUIREMENTS.
 - 2.2 USING BOM ITEM 2 AFFIX LABEL REPRESENTING THE SERIAL NUMBER IN AREA PROVIDED.
3. SILKSCREEN DOTS ON DIODES INDICATE CATHODE PIN.
4. ROUGH BOARD EDGES RESULTING FROM DE-PANELIZATION SHALL BE SANDED SMOOTH.



COMPONENTS VIEWED FROM TOP SIDE



COMPONENTS VIEWED FROM BOTTOM SIDE



D3 ENGINEERING
1057 E Henrietta Road
Rochester, NY 14623

TITLE ASSY, PCB,
TDA3x STARTER KIT,
4-FPD BASEBOARD 2G

DWG B SIZE	ITEM NO. PCA-00C022201
------------------	---------------------------

DRAWN BY:		APPROVED BY:		DATE:	
W.SENDER		W.MURPHY		04/28/17	
CAGE CODE 3V6D5		SCALE X/X		SHT 1 OF 1	