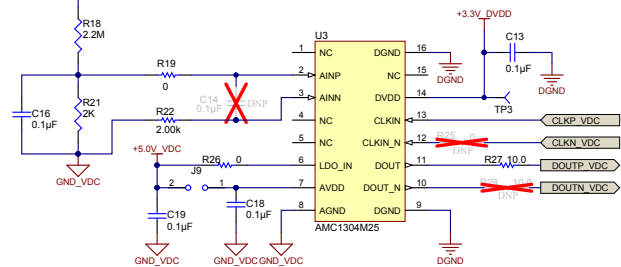
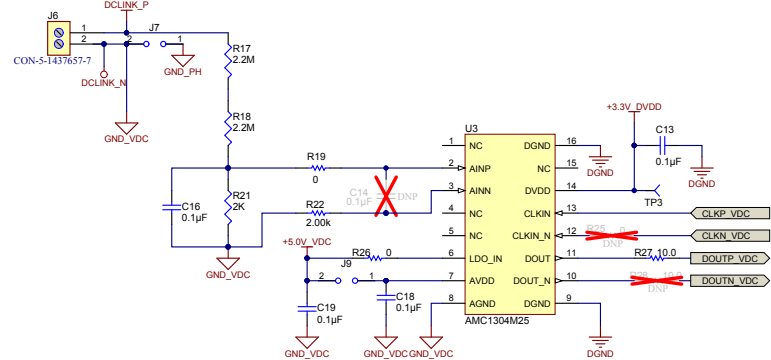
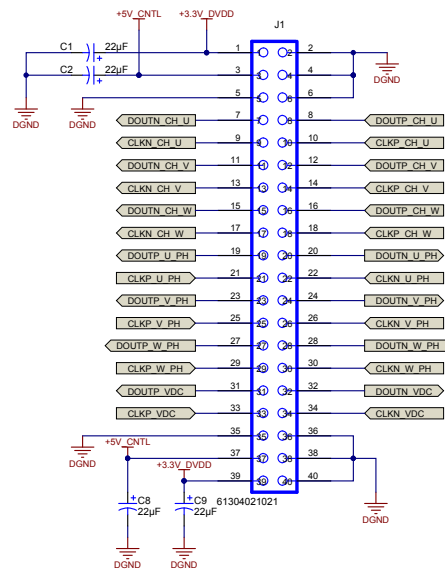
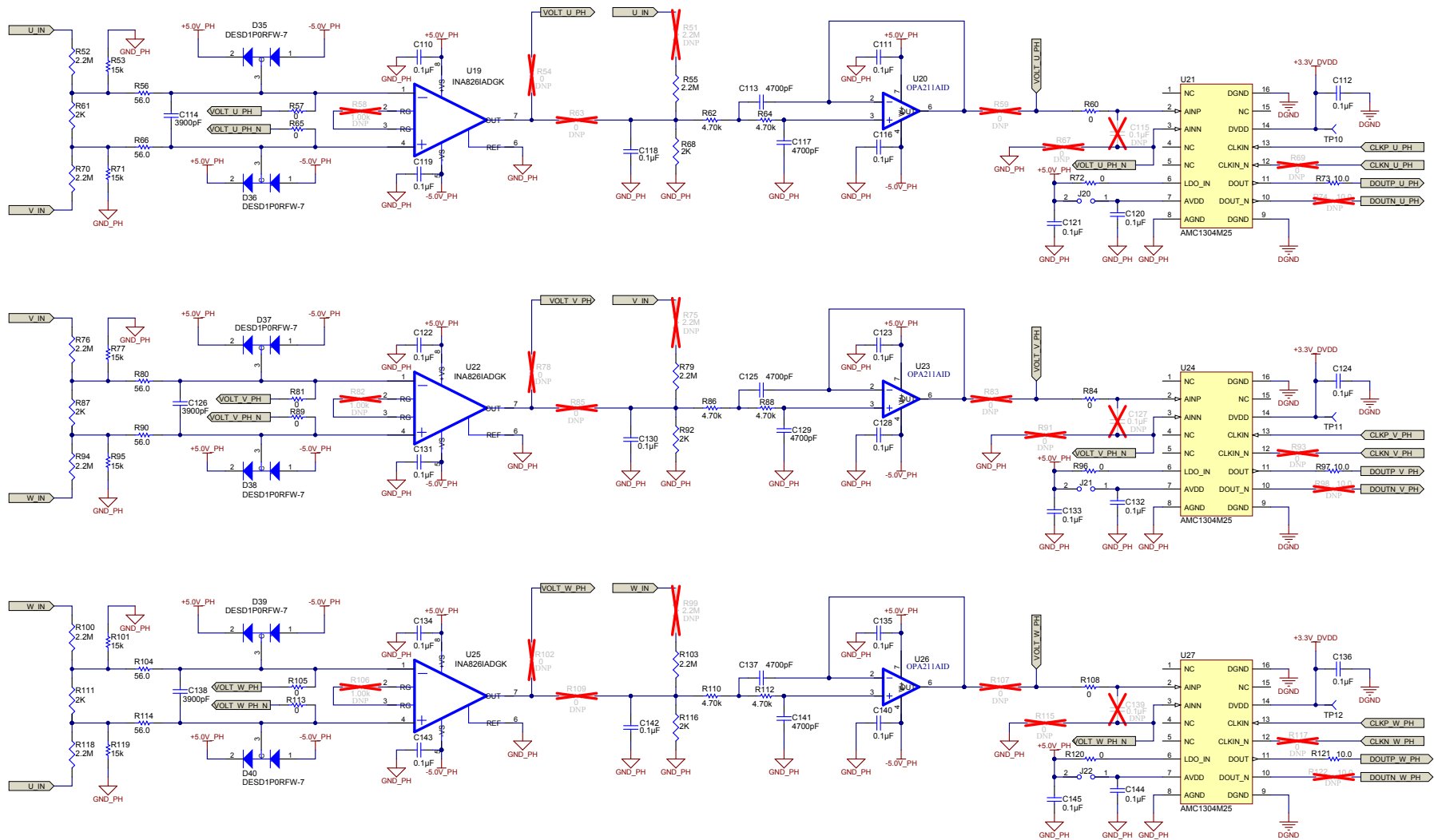
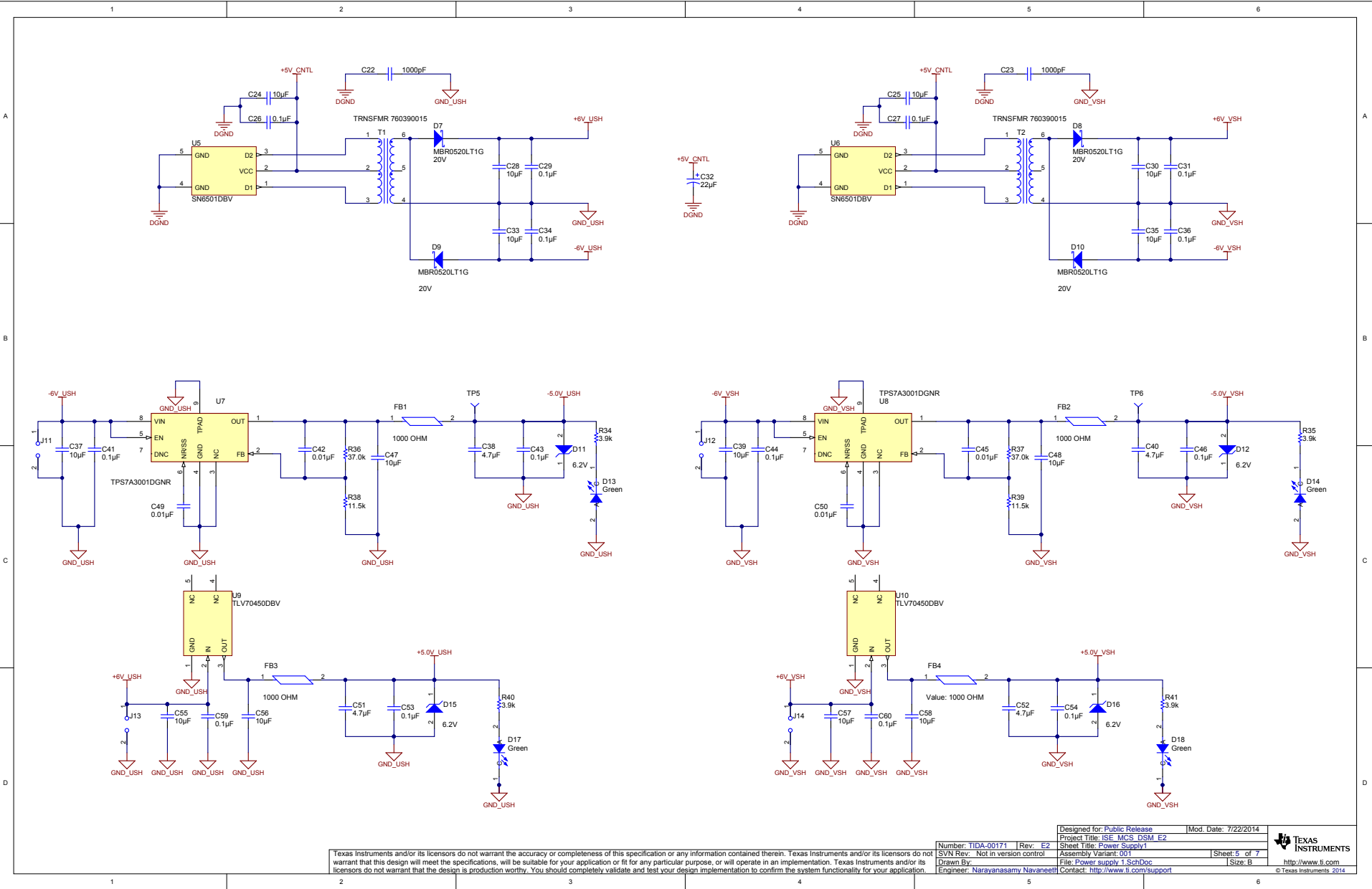


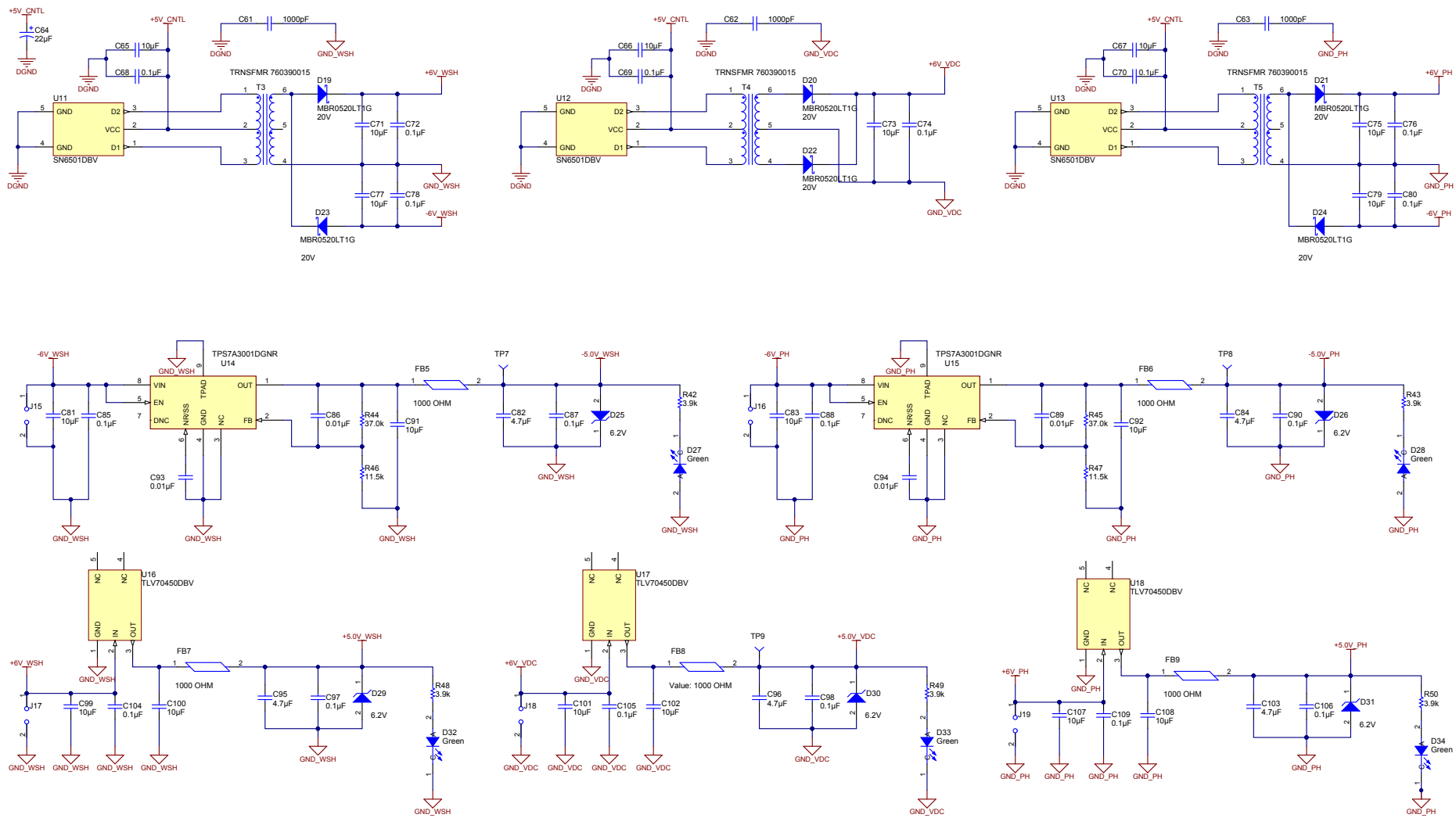
Dashed line represent alternate connection options





Texas Instruments and/or its licensors do not warrant the accuracy or completeness of this specification or any information contained therein. Texas Instruments and/or its licensors do not warrant that this design will meet the specifications, will be suitable for your application or fit for any particular purpose, or will operate in an implementation. Texas Instruments and/or its licensors do not warrant that the design is production worthy. You should completely validate and test your design implementation to confirm the system functionality for your application.





Texas Instruments and/or its licensors do not warrant the accuracy or completeness of this specification or any information contained therein. Texas Instruments and/or its licensors do not warrant that this design will meet the specifications, will be suitable for your application or fit for any particular purpose, or will operate in an implementation. Texas Instruments and/or its licensors do not warrant that the design is production worthy. You should completely validate and test your design implementation to confirm the system functionality for your application.

Designed for: Public Release		Mod. Date: 7/22/2014	
Project Title: ISE MCS DSM E2			
Number: TIDA-00171		Rev: E2	
SVN Rev: Not in version control		Sheet Title: Power Supply2	
Drawn By: Narayanasamy Navaneeth		File: Power supply 2_SchDoc	
Contact: http://www.ti.com/support		Sheet 6 of 7	
		Size: B	

PCB Number: TIDA-00171

PCB Rev: E2

PCB

LOGO

LBL1

PCB Label

ZZ1

Label Assembly Note

ZZ2

Assembly Note

ZZ3

Assembly Note

ZZ4

Assembly Note

Label Table

Variant	Label Text
001	ChangeMe!
002	ChangeMe!

Designed for: Public Release

Mod. Date: 7/22/2014

Number: TIDA-00171

Rev: E2

Project Title: ISE MCS DSM E2

Sheet Title: Hardware - Miscellaneous

SVN Rev.: Not in version control

Assembly Variant: 001

Drawn By:

Engineer: Narayanasamy Navaneeth

File: Hardware.SchDoc

Contact: <http://www.ti.com/support>

Sheet: 7 of 7

Size: B

TEXAS
INSTRUMENTS

<http://www.ti.com>

© Texas Instruments 2014

1

2

3

4

5

6

Texas Instruments and/or its licensors do not warrant the accuracy or completeness of this specification or any information contained therein. Texas Instruments and/or its licensors do not warrant that this design will meet the specifications, will be suitable for your application or fit for any particular purpose, or will operate in an implementation. Texas Instruments and/or its licensors do not warrant that the design is production worthy. You should completely validate and test your design implementation to confirm the system functionality for your application.