

LM48823**Boomer[®]** Audio Power Amplifier Series**Mono, Bridge-Tied Load, Ceramic Speaker Driver with I²C Volume Control and Reset**Check for Samples: [LM48823](#), [LM48823TLEVAL](#)**FEATURES**

- Integrated Charge Pump
- Bridge-Tied Load Output
- High PSRR
- I²C Volume and Mode Control
- Reset Input
- Advanced Click-and-Pop Suppression
- Low Supply Current
- Minimum External Components
- Micro-Power Shutdown
- Available in Space-Saving 16-Bump DSBGA Package

APPLICATIONS

- Cell Phones
- Smart Phones
- Portable Media Devices
- Notebook PCs

KEY SPECIFICATIONS

- Output Voltage at $V_{DD} = 4.2V$, $R_L = 2.2\mu F + 15\Omega$
THD+N $\leq 1\%$: 5.4V_{RMS} (typ)
- Quiescent Power Supply Current at 4.2V:
3.3mA (typ)
- PSRR at 217Hz: 93dB (typ)
- Shutdown Current: 0.01 μ A (typ)

DESCRIPTION

The LM48823 is a single supply, mono, ceramic speaker driver with an integrated charge-pump, designed for portable devices, such as cell phones, where board space is at a premium. The LM48823 charge pump allows the device to deliver 5.4V_{RMS} from a single 4.2V supply.

The LM48823 features high power supply rejection ratio (PSRR), 93dB at 217Hz, allowing the device to operate in noisy environments without additional power supply conditioning. Flexible power supply requirements allow operation from 2.0V to 4.5V. The LM48823 features an active low reset input that reverts the device to its default state. Additionally, the LM48823 features a 32-step I²C volume control. The low power Shutdown mode reduces supply current consumption to 0.01 μ A.

The LM48823's superior click and pop suppression eliminates audible transients on power-up/down and during shutdown. The LM48823 is available in an ultra-small 16-bump DSBGA package (2mmx2mm).



Please be aware that an important notice concerning availability, standard warranty, and use in critical applications of Texas Instruments semiconductor products and disclaimers thereto appears at the end of this data sheet.

All trademarks are the property of their respective owners.

Typical Application

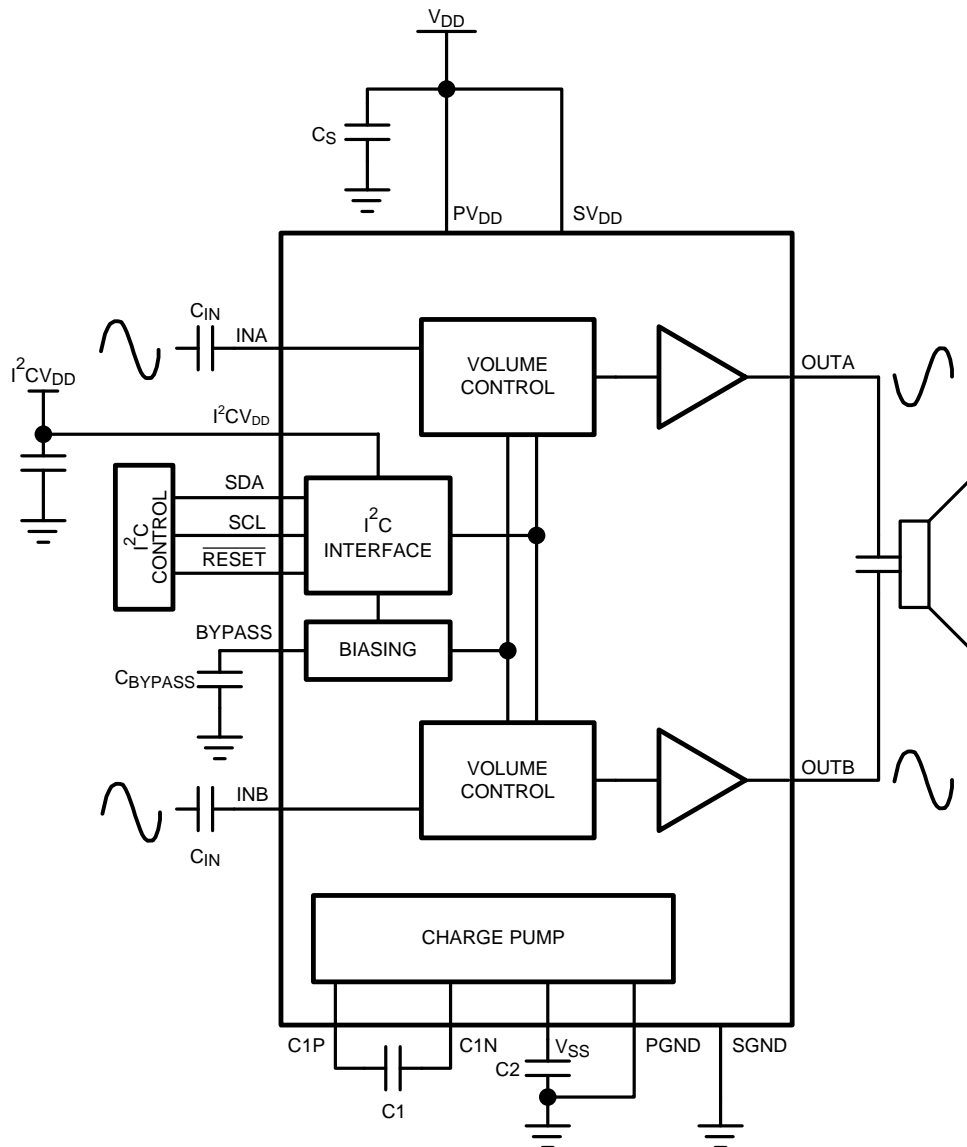


Figure 1. Typical Audio Amplifier Application Circuit

Connection Diagram

YZR Package
2mm x 2mm x 0.8mm

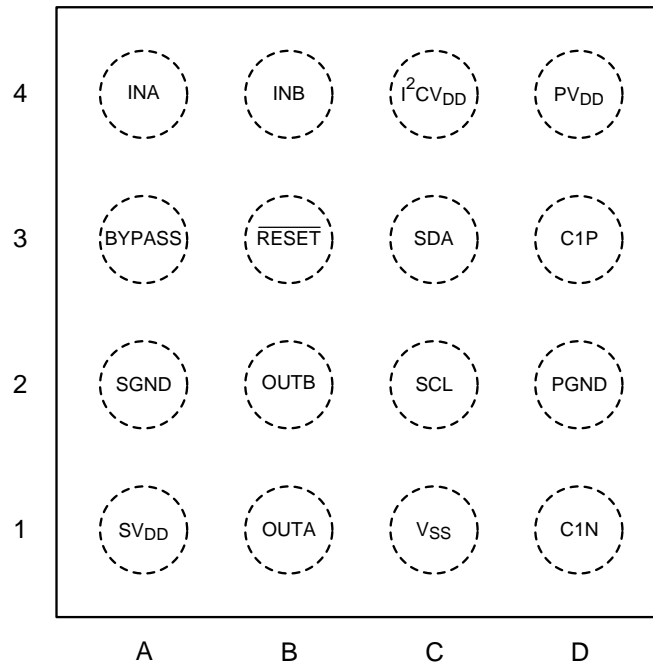


Figure 2. Top View
See Package Number YZR 16

Bump Descriptions

Pin Designator	Pin Name	Pin Function
A1	SV _{DD}	Signal Power Supply
A2	SGND	Signal Ground
A3	BYPASS	Amplifier Reference Bypass
A4	INA	Amplifier Inverting input A
B1	OUTA	Amplifier Inverting output A
B2	OUTB	Amplifier Non-Inverting Output B
B3	$\overline{\text{RESET}}$	Active Low Reset Input. Connect to V _{DD} for normal operation. Toggle between V _{DD} and GND to reset the device.
B4	INB	Amplifier Non-Inverting Input B
C1	V _{SS}	Charge Pump Output
C2	SCL	I ² C Serial Clock Input
C3	SDA	I ² C Serial Data Input
C4	I ² CV _{DD}	I ² C Supply Voltage
D1	C1N	Charge Pump Flying Capacitor Negative Terminal
D2	PGND	Power Ground
D3	C1P	Charge Pump Flying Capacitor Positive Terminal
D4	PV _{DD}	Power Supply



These devices have limited built-in ESD protection. The leads should be shorted together or the device placed in conductive foam during storage or handling to prevent electrostatic damage to the MOS gates.

ABSOLUTE MAXIMUM RATINGS ^{(1) (2)}

Supply Voltage ⁽¹⁾	5.25V
Storage Temperature	-65°C to +150°C
Input Voltage	-0.3V to $V_{DD} + 0.3V$
Power Dissipation ⁽³⁾	Internally Limited
ESD Rating ⁽⁴⁾	8kV
ESD Rating ⁽⁵⁾	250V
Junction Temperature	150°C
Thermal Resistance	
θ_{JA} (typ) - (TLA1611A)	63.2°C/W

- (1) "Absolute Maximum Ratings" indicate limits beyond which damage to the device may occur, including inoperability and degradation of device reliability and/or performance. Functional operation of the device and/or non-degradation at the *Absolute Maximum Ratings* or other conditions beyond those indicated in the *Recommended Operating Conditions* is not implied. The *Recommended Operating Conditions* indicate conditions at which the device is functional and the device should not be operated beyond such conditions. All voltages are measured with respect to the ground pin, unless otherwise specified.
- (2) The [Electrical Characteristics](#) tables list ensured specifications under the listed *Recommended Operating Conditions* except as otherwise modified or specified by the *Electrical Characteristics Conditions* and/or Notes. Typical specifications are estimations only and are not ensured.
- (3) The maximum power dissipation must be derated at elevated temperatures and is dictated by T_{JMAX} , θ_{JA} , and the ambient temperature, T_A . The maximum allowable power dissipation is $P_{DMAX} = (T_{JMAX} - T_A) / \theta_{JA}$ or the number given in *Absolute Maximum Ratings*, whichever is lower.
- (4) Human body model, applicable std. JESD22-A114C.
- (5) Machine model, applicable std. JESD22-A115-A.

OPERATING RATINGS

Temperature Range	
$T_{MIN} \leq T_A \leq T_{MAX}$	$-40^\circ\text{C} \leq T_A \leq +85^\circ\text{C}$
Supply Voltage	
PV_{DD} and SV_{DD}	$2.0V \leq V_{DD} \leq 4.5V$
I^2CV_{DD}	$1.8V \leq I^2CV_{DD} \leq 4.5V$

AUDIO AMPLIFIER ELECTRICAL CHARACTERISTICS $V_{DD} = 4.2V$ ⁽¹⁾ ⁽²⁾

The following specifications apply for $A_V = 6dB$, $R_L = 2.2\mu F + 15\Omega$, $C_1 = C_2 = 2.2\mu F$, $f = 1kHz$, unless otherwise specified. Limits apply for $T_A = 25^\circ C$.

Symbol	Parameter	Conditions	LM48823		Units (Limits)	
			Typical ⁽³⁾	Limits ⁽⁴⁾		
I_{DD}	Quiescent Power Supply Current	$V_{IN} = 0V$, $R_L = \infty$	3.3	4.3	mA (max)	
I_{SD}	Shutdown Current	Shutdown Enabled	0.01	1	μA (max)	
V_{OS}	Differential Output Offset Voltage	$V_{IN} = 0V$	0.5	3	mV (max)	
V_{IH}	Logic High Input Threshold	\overline{RESET}		1.4	V (min)	
V_{IL}		\overline{RESET}		0.4	V (max)	
A_V	Gain	Minimum Gain Setting	-70		dB	
		Maximum Gain Setting	24		dB	
R_{IN}	Input Resistance	Maximum Gain Setting	9	7	k Ω (min)	
			9	11	k Ω (max)	
		Minimum Gain Setting	80	64	k Ω (min)	
			80	96	k Ω (max)	
V_O	Output Voltage	$R_L = 2.2\mu F + 15\Omega$, THD+N = 1%	$f = 1kHz$		V_{RMS}	
			$f = 5kHz$	3.1		V_{RMS}
THD+N	Total Harmonic Distortion + Noise	$V_O = 4V_{RMS}$	0.015		%	
PSRR	Power Supply Rejection Ratio	$V_{RIPPLE} = 200mV_{P-P}$ Sine, Inputs AC GND, $C_{IN} = 1\mu F$, input referred	$f = 217Hz$	93	82	dB (min)
			$f = 1kHz$	93		dB
SNR	Signal-to-Noise-Ratio	$P_{OUT} = 40mW$, $R_L = 16\Omega$ $f = 1kHz$	119		dB	
ϵ_{OS}	Output Noise	$A_V = 4dB$, Input Referred, A-weighted Filter	5.5		μV	
T_{WU}	Wake-Up Time		200		μs	

- (1) "Absolute Maximum Ratings" indicate limits beyond which damage to the device may occur, including inoperability and degradation of device reliability and/or performance. Functional operation of the device and/or non-degradation at the *Absolute Maximum Ratings* or other conditions beyond those indicated in the *Recommended Operating Conditions* is not implied. The *Recommended Operating Conditions* indicate conditions at which the device is functional and the device should not be operated beyond such conditions. All voltages are measured with respect to the ground pin, unless otherwise specified.
- (2) The [Electrical Characteristics](#) tables list ensured specifications under the listed *Recommended Operating Conditions* except as otherwise modified or specified by the *Electrical Characteristics Conditions* and/or Notes. Typical specifications are estimations only and are not ensured.
- (3) Typical values represent most likely parametric norms at $T_A = +25^\circ C$, and at the *Recommended Operation Conditions* at the time of product characterization and are not ensured.
- (4) Datasheet min/max specification limits are specified by test or statistical analysis.

I²C INTERFACE CHARACTERISTICS $V_{DD} = 3.0V$ ⁽¹⁾ ⁽²⁾

The following specifications apply for $A_V = 6dB$, $R_L = 2.2\mu F + 15\Omega$, $C_1 = C_2 = 2.2\mu F$, $f = 1kHz$, unless otherwise specified. Limits apply for $T_A = 25^\circ C$.

Symbol	Parameter	Conditions	LM48823		Units (Limits)
			Typical ⁽³⁾	Limits ⁽⁴⁾	
t_1	SCL period			2.5	μs (min)
t_2	SDA Setup Time			100	ns (min)
t_3	SDA Stable Time			0	ns (min)
t_4	Start Condition Time			100	ns (min)
t_5	Stop Condition Time			100	ns (min)
V_{IH}	Logic High Input Threshold			$0.7 \times I^2CV_{DD}$	V (min)
V_{IL}	Logic Low Input Threshold			$0.3 \times I^2CV_{DD}$	V (max)

- (1) “*Absolute Maximum Ratings*” indicate limits beyond which damage to the device may occur, including inoperability and degradation of device reliability and/or performance. Functional operation of the device and/or non-degradation at the *Absolute Maximum Ratings* or other conditions beyond those indicated in the *Recommended Operating Conditions* is not implied. The *Recommended Operating Conditions* indicate conditions at which the device is functional and the device should not be operated beyond such conditions. All voltages are measured with respect to the ground pin, unless otherwise specified.
- (2) The [Electrical Characteristics](#) tables list ensured specifications under the listed *Recommended Operating Conditions* except as otherwise modified or specified by the *Electrical Characteristics Conditions* and/or Notes. Typical specifications are estimations only and are not ensured.
- (3) Typical values represent most likely parametric norms at $T_A = +25^\circ C$, and at the *Recommended Operation Conditions* at the time of product characterization and are not ensured.
- (4) Datasheet min/max specification limits are specified by test or statistical analysis.

TYPICAL PERFORMANCE CHARACTERISTICS

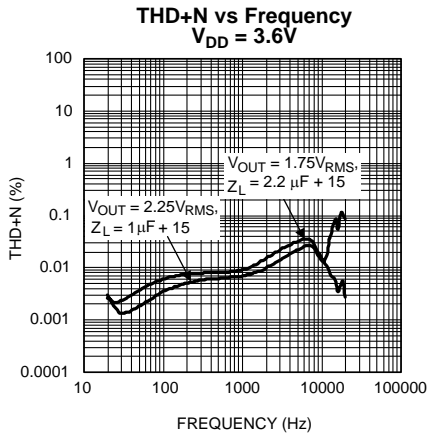


Figure 3.

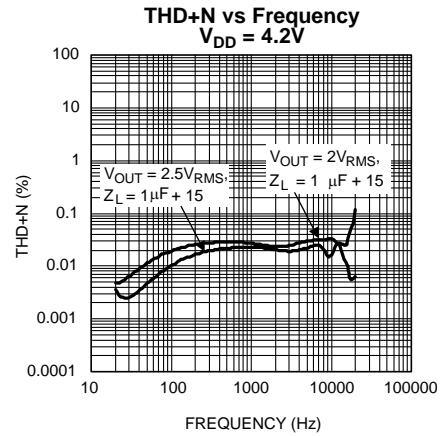


Figure 4.

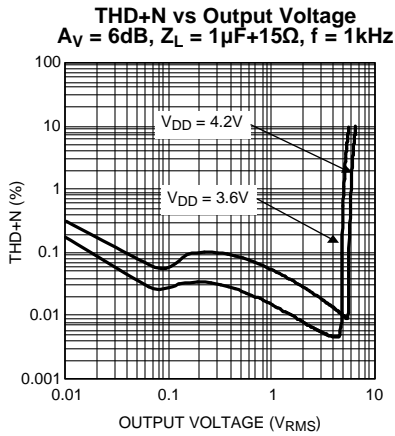


Figure 5.

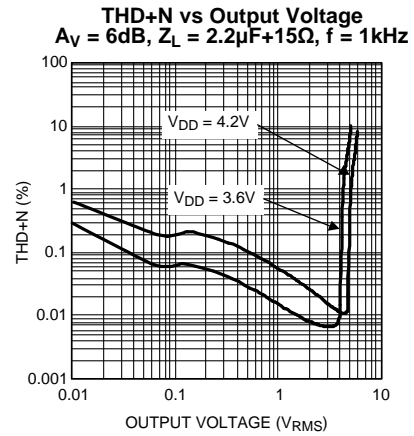


Figure 6.

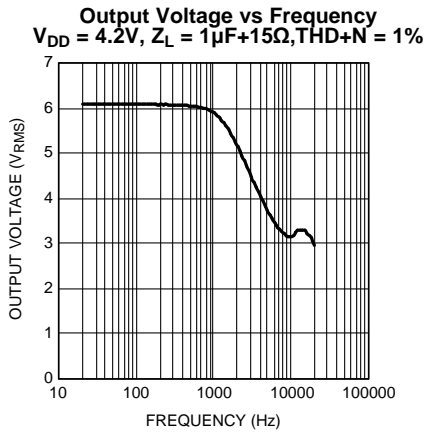


Figure 7.

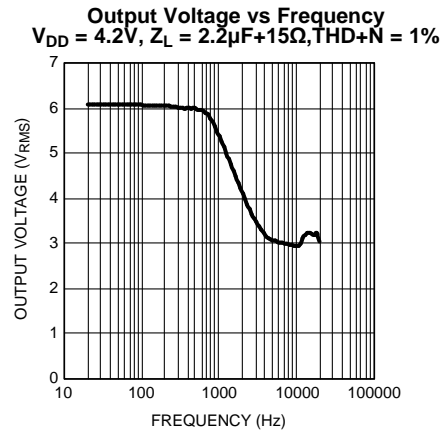


Figure 8.

TYPICAL PERFORMANCE CHARACTERISTICS (continued)

Power Consumption vs Output Voltage
 $V_{DD} = 3.6V, Z_L = 1\mu F + 15\Omega$

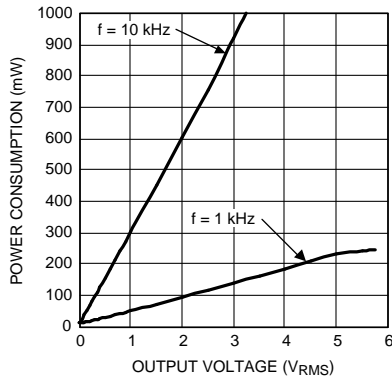


Figure 9.

Power Consumption vs Output Voltage
 $V_{DD} = 3.6V, Z_L = 2.2\mu F + 15\Omega$

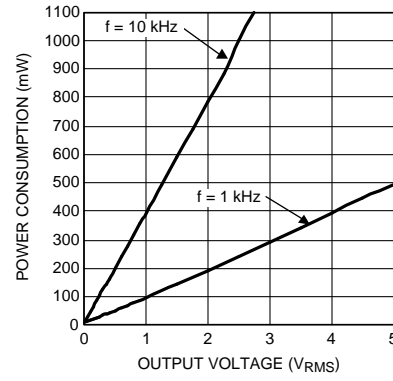


Figure 10.

Power Consumption vs Output Voltage
 $V_{DD} = 4.2V, Z_L = 1\mu F + 15\Omega$

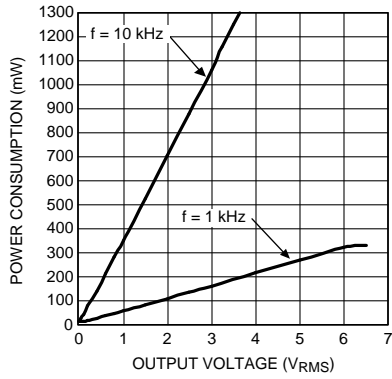


Figure 11.

Power Consumption vs Output Voltage
 $V_{DD} = 4.2V, Z_L = 2.2\mu F + 15\Omega$

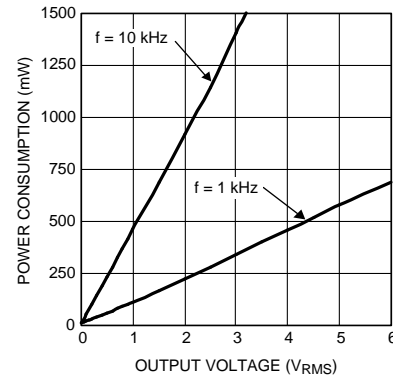


Figure 12.

Output Voltage vs Supply Voltage
 $Z_L = 1\mu F + 15\Omega, THD+N = 1\%$

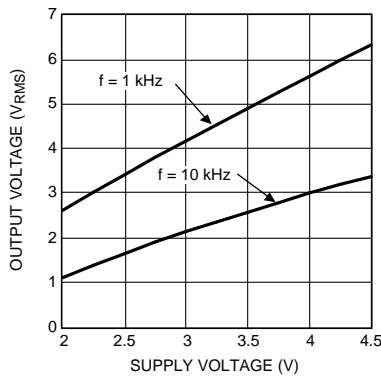


Figure 13.

Output Voltage vs Supply Voltage
 $Z_L = 2.2\mu F + 15\Omega, THD+N = 1\%$

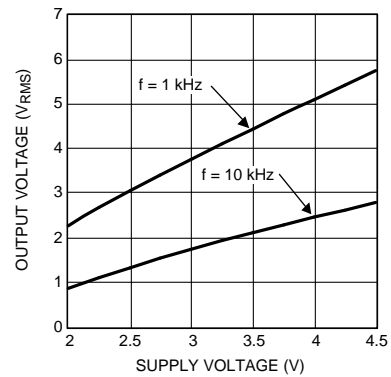


Figure 14.

TYPICAL PERFORMANCE CHARACTERISTICS (continued)

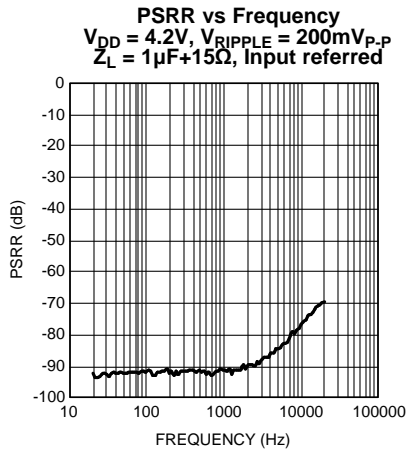


Figure 15.

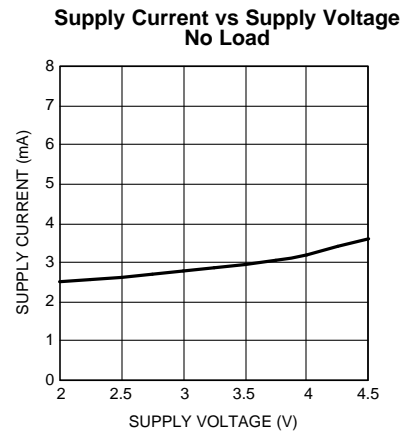


Figure 16.

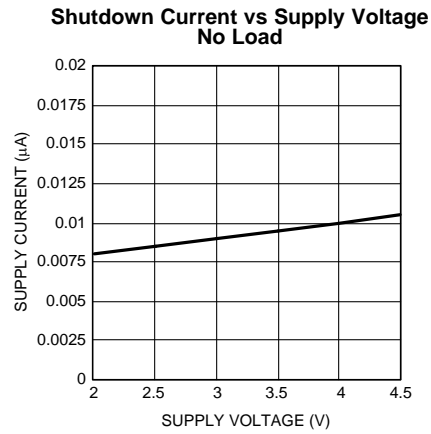


Figure 17.

APPLICATION INFORMATION

I²C COMPATIBLE INTERFACE

The LM48823 is controlled through an I²C compatible serial interface that consists of a serial data line (SDA) and a serial clock (SCL). The clock line is uni-directional. The data line is bi-directional (open drain). The LM48823 and the master can communicate at clock rates up to 400kHz. Figure 18 shows the I²C interface timing diagram. Data on the SDA line must be stable during the HIGH period of SCL. The LM48823 is a transmit/receive slave-only device, reliant upon the master to generate the SCL signal. Each transmission sequence is framed by a START condition and a STOP condition (Figure 19). Each data word, device address and data, transmitted over the bus is 8 bits long and is always followed by an acknowledge pulse (Figure 20). The LM48823 device address is 1110110.

I²C BUS FORMAT

The I²C bus format is shown in Figure 20. The START signal, the transition of SDA from HIGH to LOW while SCL is HIGH, is generated, alerting all devices on the bus that a device address is being written to the bus.

The 7-bit device address is written to the bus, most significant bit (MSB) first, followed by the $\overline{R/\overline{W}}$ bit. $\overline{R/\overline{W}} = 0$ indicates the master is writing to the slave device, $\overline{R/\overline{W}} = 1$ indicates the master wants to read data from the slave device. Set $\overline{R/\overline{W}} = 0$; the LM48823 is a WRITE-ONLY device and will not respond to the $\overline{R/\overline{W}} = 1$. The data is latched in on the rising edge of the clock. Each address bit must be stable while SCL is HIGH. After the last address bit is transmitted, the master device releases SDA, during which time, an acknowledge clock pulse is generated by the slave device. If the LM48823 receives the correct address, the device pulls the SDA line low, generating an acknowledge bit (ACK).

Once the master device registers the ACK bit, the 8-bit register data word is sent. Each data bit should be stable while SCL is HIGH. After the 8-bit register data word is sent, the LM48823 sends another ACK bit. Following the acknowledgement of the register data word, the master issues a STOP bit, allowing SDA to go high while SCL is high.

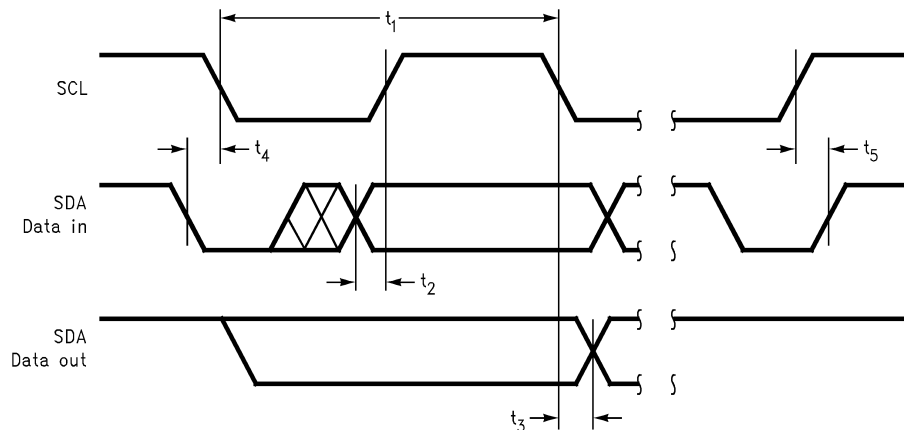


Figure 18. I²C Timing Diagram

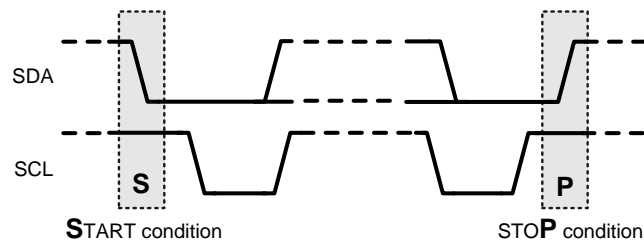


Figure 19. Start and Stop Diagram

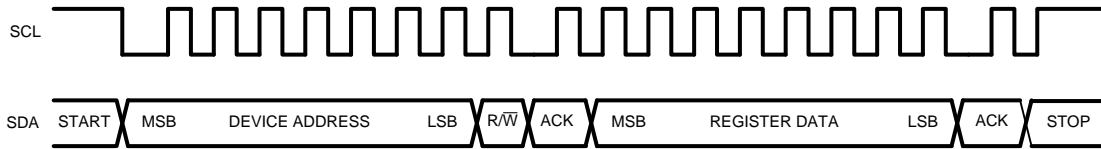


Figure 20. Example Write Sequence

Table 1. Device Address

	B7	B6	B5	B4	B3	B2	B1	B0 R/W
Chip Address	1	1	1	0	1	1	0	0

Table 2. Mode Control Registers

Register Name	B7	B6	B5	B4	B3	B2	B1	B0
Mode Control	VOL4	VOL3	VOL2	VOL1	VOL0	0	ENABLE_A	ENABLE_B

GENERAL AMPLIFIER FUNCTION

The LM48823 is a ceramic speaker driver that utilizes TI's inverting charge pump technology to deliver over 15V_{P-P} to a 2.2μF ceramic speaker while operating from a single 4.2V supply. The LM48823 features a unique input stage that converts two single-ended audio signals into a mono BTL output. This stereo to mono conversion is useful in applications where a stereo audio source is driving a single ceramic speaker, such as a ringer on a cellular phone. Connect INA and INB as shown in Figure 21 for the stereo-to-mono conversion. When the LM48823 is used with a single-ended mono audio source, connect both INA and INB to the audio source as shown in Figure 22.

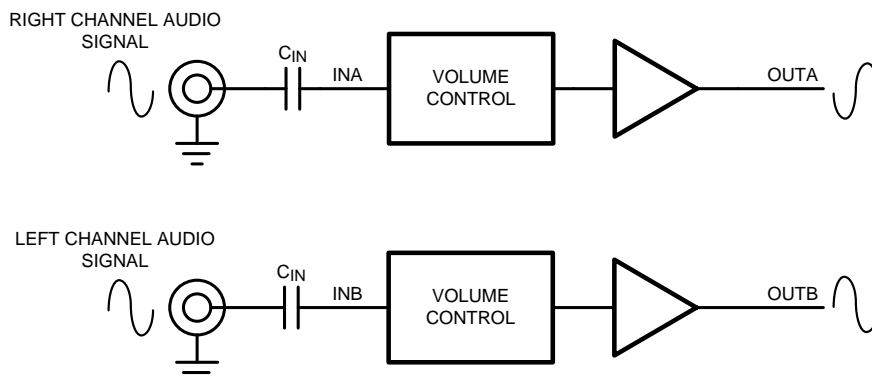


Figure 21. Stereo to Mono Conversion Connection Example

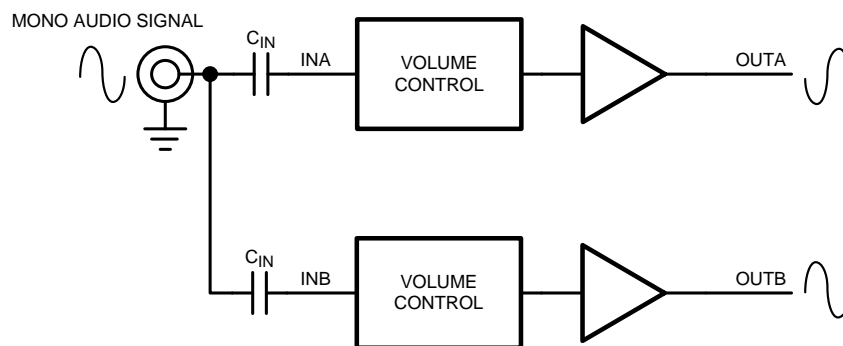


Figure 22. Mono Audio Source Connection Example

VOLUME CONTROL

Table 3. Volume Control

Volume Step	VOL4	VOL3	VOL2	VOL1	VOL0	Gain (dB)
1	0	0	0	0	0	-70
2	0	0	0	0	1	-56
3	0	0	0	1	0	-46
4	0	0	0	1	1	-38
5	0	0	1	0	0	-32
6	0	0	1	0	1	-28
7	0	0	1	1	0	-24
8	0	0	1	1	1	-21
9	0	1	0	0	0	-18
10	0	1	0	0	1	-15
11	0	1	0	1	0	-12
12	0	1	0	1	1	-10
13	0	1	1	0	0	-8
14	0	1	1	0	1	-6
15	0	1	1	1	0	-4
16	0	1	1	1	1	-2
17	1	0	0	0	0	0
18	1	0	0	0	1	2
19	1	0	0	1	0	4
20	1	0	0	1	1	6
21	1	0	1	0	0	8
22	1	0	1	0	1	10
23	1	0	1	1	0	12
24	1	0	1	1	1	14
25	1	1	0	0	0	16
26	1	1	0	0	1	18
27	1	1	0	1	0	19
28	1	1	0	1	1	20
29	1	1	1	0	0	21
30	1	1	1	0	1	22
31	1	1	1	1	0	23
32	1	1	1	1	1	24

SHUTDOWN FUNCTION

The LM48823 features a low-power shutdown mode that disables the device, lowering the quiescent current to 0.01 μ A. Set bits B1 (ENABLE_A) and B2 (ENABLE_B) to 0 to disable the amplifiers and charge pump. Set both ENABLE_A and ENABLE_B to 1 for normal operation. Shutdown mode does not clear the I²C register. When re-enabled, the device returns to its previous volume setting. To clear the I²C register, either remove power from the device, or toggle RESET (see [RESET](#) section).

RESET

The LM48823 features an active low reset input. Driving $\overline{\text{RESET}}$ low clears the I²C register. Volume control is set to 00000 (-70dB) and both ENABLE_A and ENABLE_B are set to 0, disabling the device. While $\overline{\text{RESET}}$ is low, the LM48823 ignores any I²C data. After the device is reset, and RESET is driven high, the LM48823 remains in shutdown mode with the volume set to -70dB. Re-enable the device by writing to the I²C register.

PROPER SELECTION OF EXTERNAL COMPONENTS

Power Supply Bypassing/Filtering

Proper power supply bypassing is critical for low noise performance and high PSRR. Place the supply bypass capacitors as close to the device as possible. Place a 1µF ceramic capacitor from V_{DD} to GND. Additional bulk capacitance may be added as required.

Bypass Capacitor Selection

The BYPASS capacitor, C_{BYPASS}, improves PSRR, noise rejection and output offset. For best results, use a capacitor of identical value to the input coupling capacitors

Charge Pump Capacitor Selection

Use low ESR ceramic capacitors (less than 100mΩ) for optimum performance.

Charge Pump Flying Capacitor (C1)

The flying capacitor (C1) affects the load regulation and output impedance of the charge pump. A C1 value that is too low results in a loss of current drive, leading to a loss of amplifier headroom. A higher valued C1 improves load regulation and lowers charge pump output impedance to an extent. Above 2.2µF, the R_{DS(ON)} of the charge pump switches and the ESR of C1 and C2 dominate the output impedance. A lower value capacitor can be used in systems with low maximum output power requirements.

Charge Pump Hold Capacitor (C2)

The value and ESR of the hold capacitor (C2) directly affects the ripple on CPV_{SS}. Increasing the value of C2 reduces output ripple. Decreasing the ESR of C2 reduces both output ripple and charge pump output impedance. A lower value capacitor can be used in systems with low maximum output power requirements.

Input Capacitor Selection

Input capacitors block the DC component of the audio signal, eliminating any conflict between the DC component of the audio source and the bias voltage of the LM48823. The input capacitors create a high-pass filter with the input resistors R_{IN}. The -3dB point of the high pass filter is found using [Equation 1](#).

$$f = 1 / 2\pi R_{IN} C_{IN} \quad (\text{Hz})$$

where

- the value of R_{IN} is given in the [Electrical Characteristics](#) table. (1)

High pass filtering the audio signal helps protect the speakers. When the LM48823 is using a single-ended source, power supply noise on the ground is seen as an input signal. Setting the high-pass filter point above the power supply noise frequencies, 217Hz in a GSM phone, for example, filters out the noise such that it is not amplified and heard on the output. Capacitors with a tolerance of 10% or better are recommended for impedance matching and improved CMRR and PSRR.

PCB LAYOUT GUIDELINES

Minimize trace impedance of the power, ground and all output traces for optimum performance. Voltage loss due to trace resistance between the LM48823 and the load results in decreased output power and efficiency. Trace resistance between the power supply and ground has the same effect as a poorly regulated supply, increased ripple and reduced peak output power. Use wide traces for power supply inputs and amplifier outputs to minimize losses due to trace resistance, as well as route heat away from the device. Proper grounding improves audio performance, minimizes crosstalk between channels and prevents switching noise from interfering with the audio signal. Use of power and ground planes is recommended.

Place all digital components and route digital signal traces as far as possible from analog components and traces. Do not run digital and analog traces in parallel on the same PCB layer. If digital and analog signal lines must cross either over or under each other, ensure that they cross in a perpendicular fashion.

LM48823TL DEMOBOARD BILL OF MATERIALS

Designator	Quantity	Description
C1, C2	2	2.2µF ±10% 10V X5R Ceramic Capacitor (603) Panasonic ECJ-1VB1A225K Murata GRM033R60J104KE19D
C3 – C5	3	1µF ±10% 10V Tantalum Capacitor (402) AVX TACK105M010QTA
C6	1	4.7µF ±10% 6.3V X5R Ceramic Capacitor (603) Panasonic ECJ-1VB0J475K Murata GRM188R60J475KE19D
C7, C8	2	0.1µF ±10% 6.3V X5R Ceramic Capacitor (201) Panasonic ECJ-ZEB0J104K Murata GRM188R61A225KE34D
JU1 – JU5	5	2 Pin Header
JU6, JU7	3	2 Pin Header
J1	1	5-Pin I ² C Header
LM48823TL	1	LM48823TL (16-Bump DSBGA)

DEMO BOARD SCHEMATIC

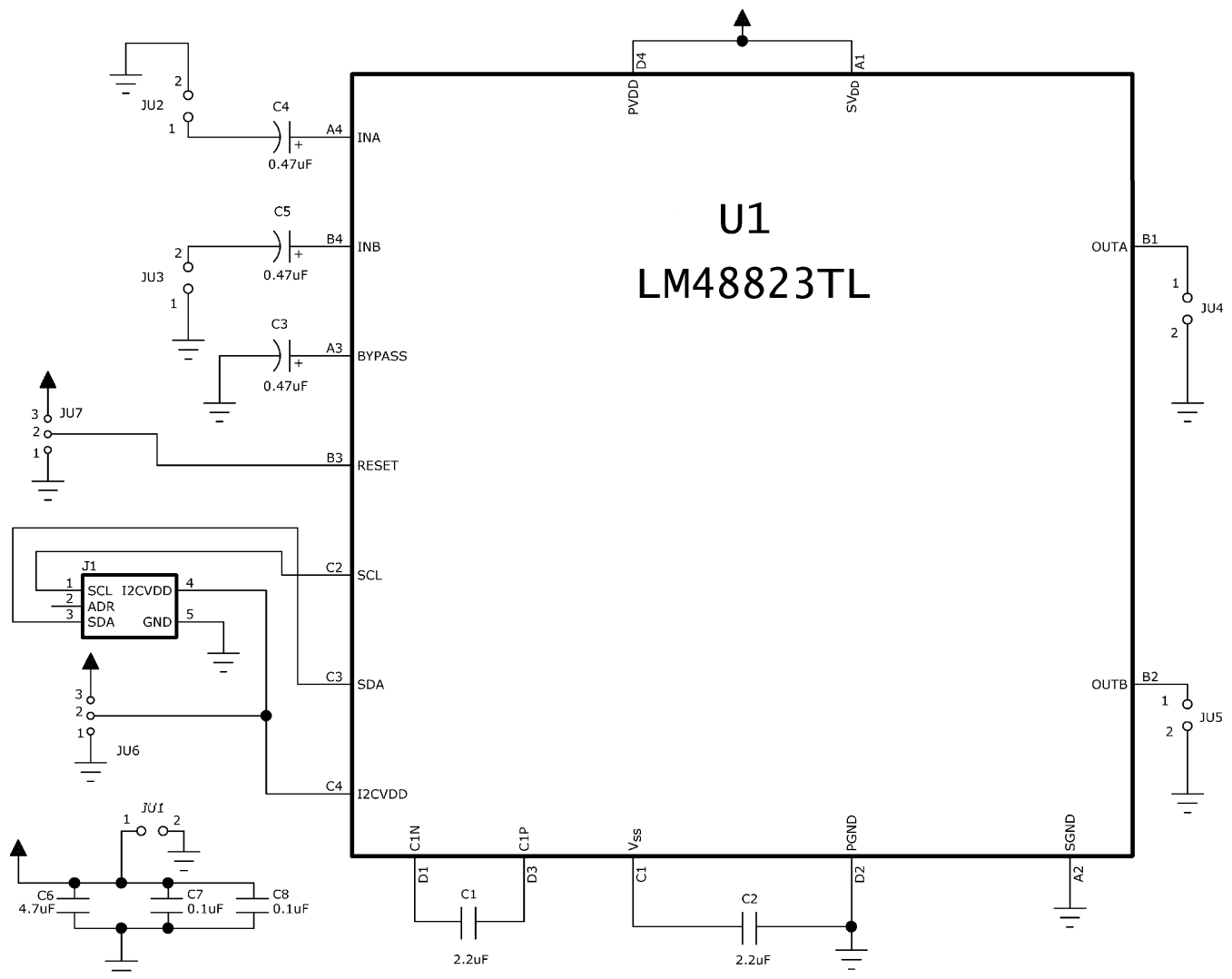


Figure 23. LM48823 Demo Board Schematic

PC BOARD LAYOUT

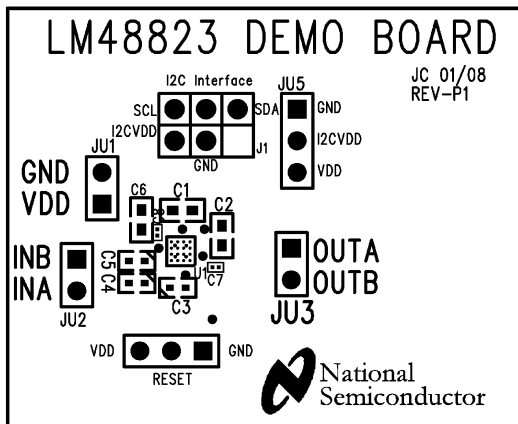


Figure 24. Top Silkscreen Layer

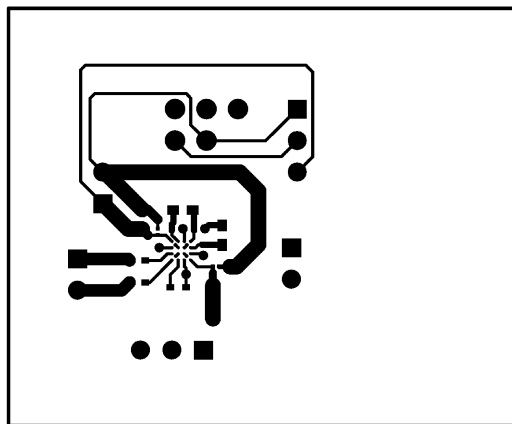


Figure 25. Top Layer

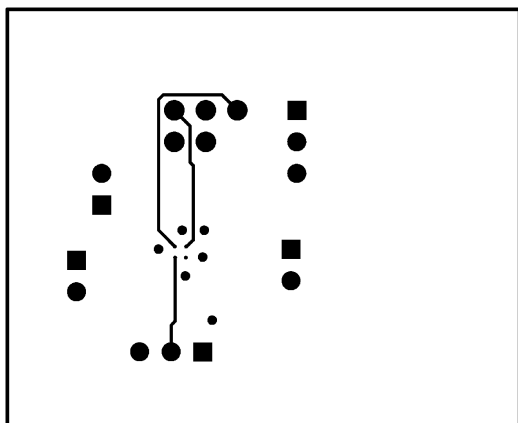


Figure 26. Layer 2

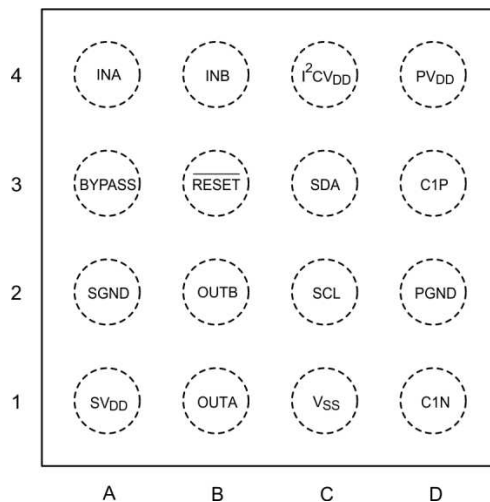


Figure 27. Layer 3

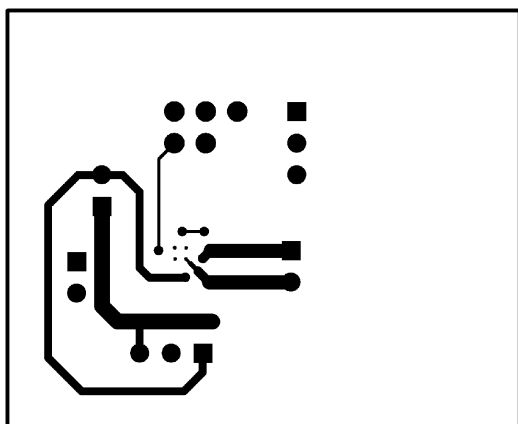


Figure 28. Bottom Layer

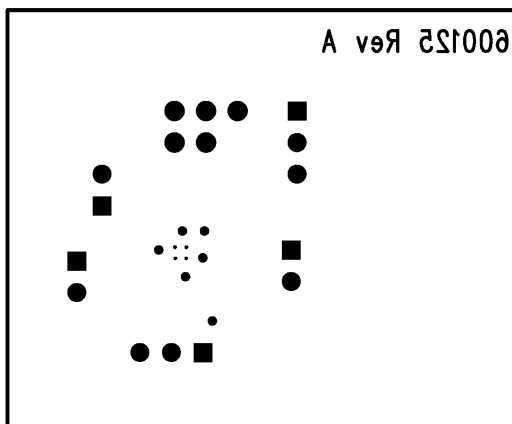


Figure 29. Bottom Silkscreen

REVISION HISTORY

Rev	Date	Description
1.0	06/27/08	Initial release.
1.01	07/15/08	Edited the Ordering Information table.
1.02	10/08/10	Updated some Limits (under Gain) in the Volume Control table.

PACKAGING INFORMATION

Orderable part number	Status (1)	Material type (2)	Package Pins	Package qty Carrier	RoHS (3)	Lead finish/ Ball material (4)	MSL rating/ Peak reflow (5)	Op temp (°C)	Part marking (6)
LM48823TL/NOPB	Active	Production	DSBGA (YZR) 16	250 SMALL T&R	Yes	SNAGCU	Level-1-260C-UNLIM	-40 to 85	GK6
LM48823TL/NOPB.A	Active	Production	DSBGA (YZR) 16	250 SMALL T&R	Yes	SNAGCU	Level-1-260C-UNLIM	-40 to 85	GK6

(1) **Status:** For more details on status, see our [product life cycle](#).

(2) **Material type:** When designated, preproduction parts are prototypes/experimental devices, and are not yet approved or released for full production. Testing and final process, including without limitation quality assurance, reliability performance testing, and/or process qualification, may not yet be complete, and this item is subject to further changes or possible discontinuation. If available for ordering, purchases will be subject to an additional waiver at checkout, and are intended for early internal evaluation purposes only. These items are sold without warranties of any kind.

(3) **RoHS values:** Yes, No, RoHS Exempt. See the [TI RoHS Statement](#) for additional information and value definition.

(4) **Lead finish/Ball material:** Parts may have multiple material finish options. Finish options are separated by a vertical ruled line. Lead finish/Ball material values may wrap to two lines if the finish value exceeds the maximum column width.

(5) **MSL rating/Peak reflow:** The moisture sensitivity level ratings and peak solder (reflow) temperatures. In the event that a part has multiple moisture sensitivity ratings, only the lowest level per JEDEC standards is shown. Refer to the shipping label for the actual reflow temperature that will be used to mount the part to the printed circuit board.

(6) **Part marking:** There may be an additional marking, which relates to the logo, the lot trace code information, or the environmental category of the part.

Multiple part markings will be inside parentheses. Only one part marking contained in parentheses and separated by a "~" will appear on a part. If a line is indented then it is a continuation of the previous line and the two combined represent the entire part marking for that device.

Important Information and Disclaimer:The information provided on this page represents TI's knowledge and belief as of the date that it is provided. TI bases its knowledge and belief on information provided by third parties, and makes no representation or warranty as to the accuracy of such information. Efforts are underway to better integrate information from third parties. TI has taken and continues to take reasonable steps to provide representative and accurate information but may not have conducted destructive testing or chemical analysis on incoming materials and chemicals. TI and TI suppliers consider certain information to be proprietary, and thus CAS numbers and other limited information may not be available for release.

In no event shall TI's liability arising out of such information exceed the total purchase price of the TI part(s) at issue in this document sold by TI to Customer on an annual basis.

TAPE AND REEL INFORMATION

QUADRANT ASSIGNMENTS FOR PIN 1 ORIENTATION IN TAPE


*All dimensions are nominal

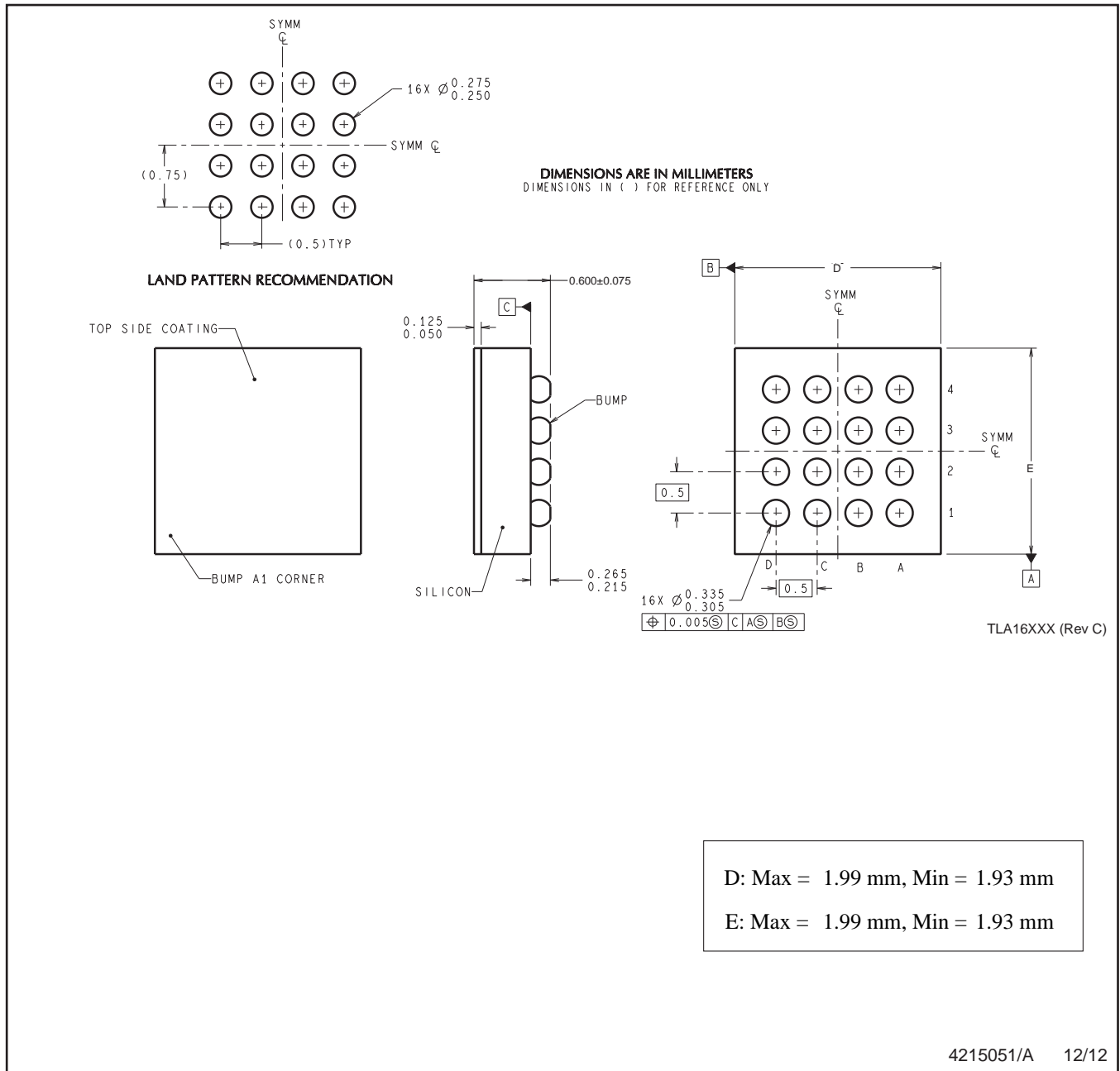
Device	Package Type	Package Drawing	Pins	SPQ	Reel Diameter (mm)	Reel Width W1 (mm)	A0 (mm)	B0 (mm)	K0 (mm)	P1 (mm)	W (mm)	Pin1 Quadrant
LM48823TL/NOPB	DSBGA	YZR	16	250	178.0	8.4	2.08	2.08	0.76	4.0	8.0	Q1

TAPE AND REEL BOX DIMENSIONS


*All dimensions are nominal

Device	Package Type	Package Drawing	Pins	SPQ	Length (mm)	Width (mm)	Height (mm)
LM48823TL/NOPB	DSBGA	YZR	16	250	208.0	191.0	35.0

YZR0016



NOTES: A. All linear dimensions are in millimeters. Dimensioning and tolerancing per ASME Y14.5M-1994.
 B. This drawing is subject to change without notice.

4215051/A 12/12

IMPORTANT NOTICE AND DISCLAIMER

TI PROVIDES TECHNICAL AND RELIABILITY DATA (INCLUDING DATASHEETS), DESIGN RESOURCES (INCLUDING REFERENCE DESIGNS), APPLICATION OR OTHER DESIGN ADVICE, WEB TOOLS, SAFETY INFORMATION, AND OTHER RESOURCES "AS IS" AND WITH ALL FAULTS, AND DISCLAIMS ALL WARRANTIES, EXPRESS AND IMPLIED, INCLUDING WITHOUT LIMITATION ANY IMPLIED WARRANTIES OF MERCHANTABILITY, FITNESS FOR A PARTICULAR PURPOSE OR NON-INFRINGEMENT OF THIRD PARTY INTELLECTUAL PROPERTY RIGHTS.

These resources are intended for skilled developers designing with TI products. You are solely responsible for (1) selecting the appropriate TI products for your application, (2) designing, validating and testing your application, and (3) ensuring your application meets applicable standards, and any other safety, security, regulatory or other requirements.

These resources are subject to change without notice. TI grants you permission to use these resources only for development of an application that uses the TI products described in the resource. Other reproduction and display of these resources is prohibited. No license is granted to any other TI intellectual property right or to any third party intellectual property right. TI disclaims responsibility for, and you fully indemnify TI and its representatives against any claims, damages, costs, losses, and liabilities arising out of your use of these resources.

TI's products are provided subject to [TI's Terms of Sale](#), [TI's General Quality Guidelines](#), or other applicable terms available either on [ti.com](#) or provided in conjunction with such TI products. TI's provision of these resources does not expand or otherwise alter TI's applicable warranties or warranty disclaimers for TI products. Unless TI explicitly designates a product as custom or customer-specified, TI products are standard, catalog, general purpose devices.

TI objects to and rejects any additional or different terms you may propose.

Copyright © 2025, Texas Instruments Incorporated

Last updated 10/2025