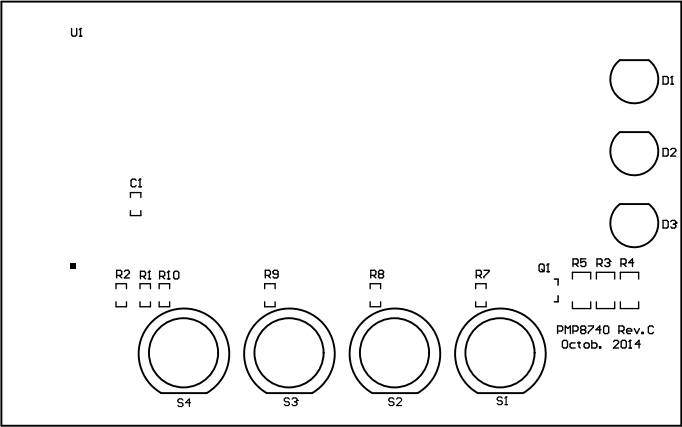


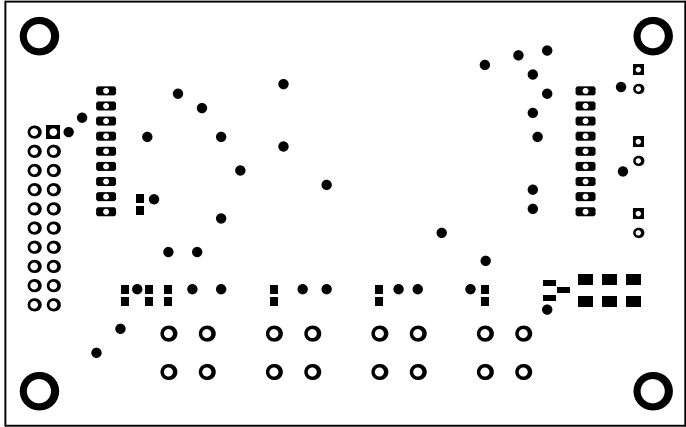
This document can handle board shapes up to 7.9in x 10in, although our panel vendors top out at 7in x 10in.
To re-size the board shape, do the following:
Select lines on M1 Board Outline and delete (easy in single layer mode...shift+s)
Draw a rectangle using lines (example will be for a 4 x 6 board
Enter Place Line mode (keyboard pl)
keyboard jo to jump to origin, hit enter
keyboard jl to jump to location, set x to 6000, hit enter twice
keyboard jl to jump to location, set x to 6000 and y to 4000, hit enter twice
keyboard jl to jump to location, set x to 0 and y to 4000, hit enter twice
keyboard jo to jump to origin, hit enter
Hit ESC twice to exit place line mode
Select lines on M1 Board Outline
Menu Design|Board Shape|Define from Selected Objects (keyboard dsd)
To define a Keep-Out that mirrors the board outline:
Menu Design|Board Shape|Create Primitives From Board Shape (keyboard dsp)
Set the Keep-Out Layer as the layer, set width as preferred
Ensure Route Tool Outline is selected, hit enter

If you re-size the board, don't forget to move the drill table strings on the Drill Drawing Layer...they should be just to the right of your board shape

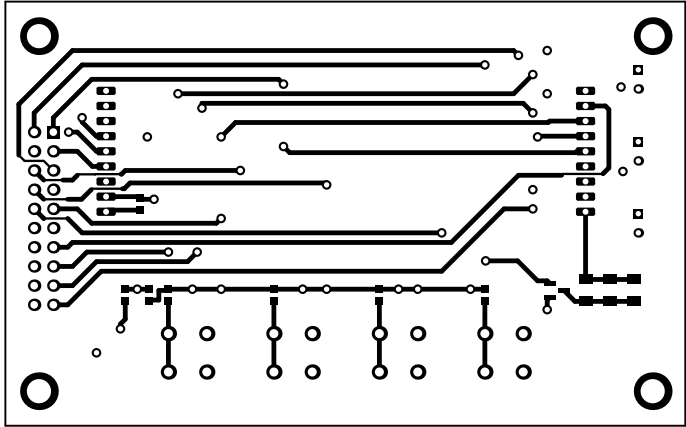


The reference design PMP8740 Rev_E has been built on PMP8740 Rev_C Boards

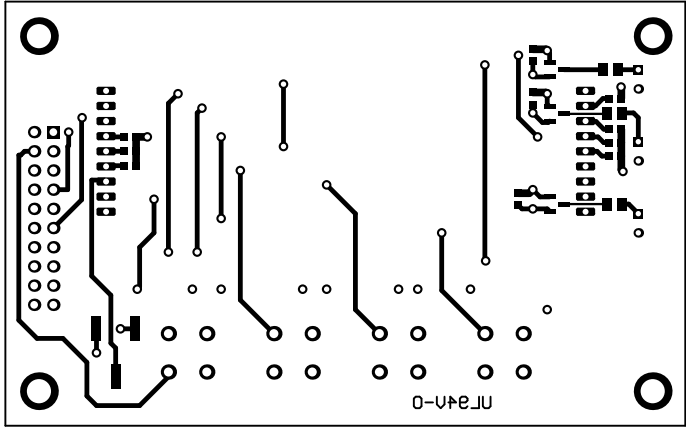
| | | | |
|----------------------------------|---------------------------------|-------------------|--------------------------------|
| ALL ARTWORK VIEWED FROM TOP SIDE | BOARD #: PMP8740 | REV: C | SUN REV: Not In VersionControl |
| LAYER NAME = Top Overlay | | | |
| PLOT NAME = Top Overlay | GENERATED : 8/6/2019 6:57:33 PM | TEXAS INSTRUMENTS | |



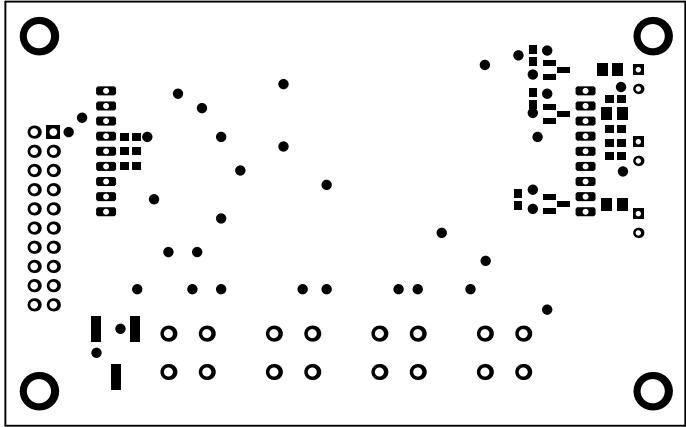
| | | | |
|----------------------------------|---------------------------------|-------------------|--------------------------------|
| ALL ARTWORK VIEWED FROM TOP SIDE | BOARD #: PMP8740 | REV: C | SUN REV: Not In VersionControl |
| LAYER NAME = Top Solder | | | |
| PLOT NAME = Top Solder Mask | GENERATED : 8/6/2019 6:57:33 PM | TEXAS INSTRUMENTS | |



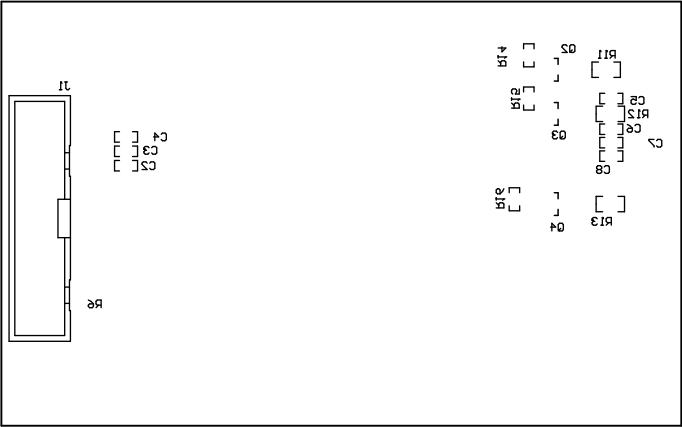
| | | | |
|----------------------------------|---------------------------------|-------------------|--------------------------------|
| ALL ARTWORK VIEWED FROM TOP SIDE | BOARD #: PMP8740 | REV: C | SUN REV: Not In VersionControl |
| LAYER NAME = Top Layer | | | |
| PLOT NAME = Top Layer | GENERATED : 8/6/2019 6:57:33 PM | TEXAS INSTRUMENTS | |



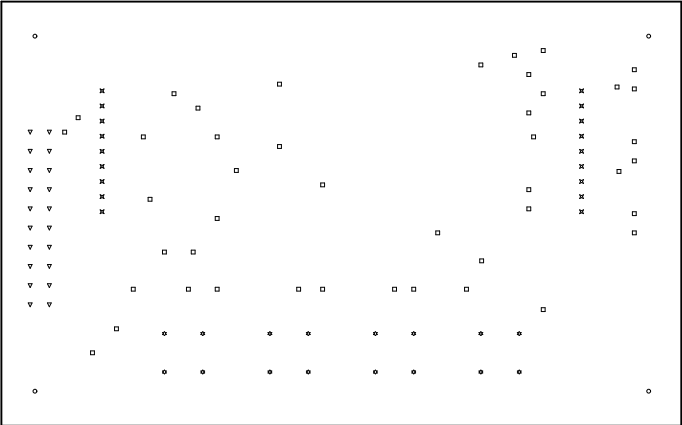
| | | | |
|----------------------------------|---------------------------------|-------------------|--------------------------------|
| ALL ARTWORK VIEWED FROM TOP SIDE | BOARD #: PMP8740 | REV: C | SUN REV: Not In VersionControl |
| LAYER NAME = Bottom Layer | | | |
| PLOT NAME = Bottom Layer | GENERATED : 8/6/2019 6:57:33 PM | TEXAS INSTRUMENTS | |



| | | | |
|----------------------------------|---------------------------------|-------------------|--------------------------------|
| ALL ARTWORK VIEWED FROM TOP SIDE | BOARD #: PMP8740 | REV: C | SUN REV: Not In VersionControl |
| LAYER NAME = Bottom Solder | | | |
| PLOT NAME = Bottom Solder Mask | GENERATED : 8/6/2019 6:57:33 PM | TEXAS INSTRUMENTS | |

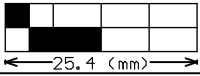


| | | | |
|----------------------------------|---------------------------------|-------------------|--------------------------------|
| ALL ARTWORK VIEWED FROM TOP SIDE | BOARD #: PMP8740 | REV: C | SUN REV: Not In VersionControl |
| LAYER NAME = Bottom Overlay | | | |
| PLOT NAME = Bottom Overlay | GENERATED : 8/6/2019 6:57:33 PM | TEXAS INSTRUMENTS | |



| Symbol | Count | Hole Size | Plated | Hole Type |
|-----------|-------|---------------------|--------|-----------|
| ○ | 4 | 3.200mm (125.98mil) | PTH | Round |
| ✱ | 16 | 1.194mm (47.00mil) | PTH | Round |
| ✕ | 18 | 0.787mm (31.00mil) | PTH | Round |
| ▽ | 20 | 1.016mm (40.00mil) | PTH | Round |
| □ | 44 | 0.711mm (28.00mil) | PTH | Round |
| 102 Total | | | | |

| | | | |
|----------------------------------|---------------------------------|-------------------|--------------------------------|
| ALL ARTWORK VIEWED FROM TOP SIDE | BOARD #: PMP8740 | REV: C | SUN REV: Not In VersionControl |
| LAYER NAME = Drill Drawing | | | |
| PLOT NAME = Drill Drawing | GENERATED : 8/6/2019 6:57:33 PM | TEXAS INSTRUMENTS | |



| | | | |
|----------------------------------|---------------------------------|-------------------|--------------------------------|
| ALL ARTWORK VIEWED FROM TOP SIDE | BOARD #: PMP8740 | REV: C | SUN REV: Not In VersionControl |
| LAYER NAME = M2 Board Dimensions | | | |
| PLOT NAME = Board Dimensions | GENERATED : 8/6/2019 6:57:34 PM | TEXAS INSTRUMENTS | |