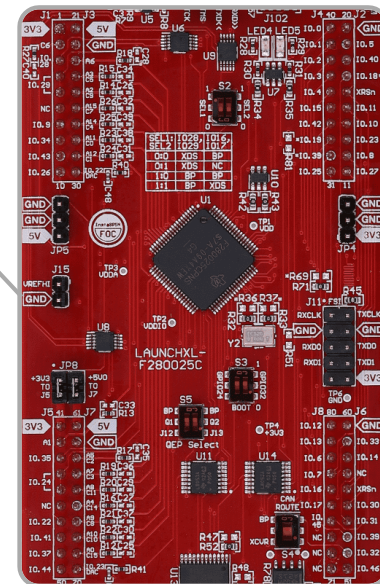
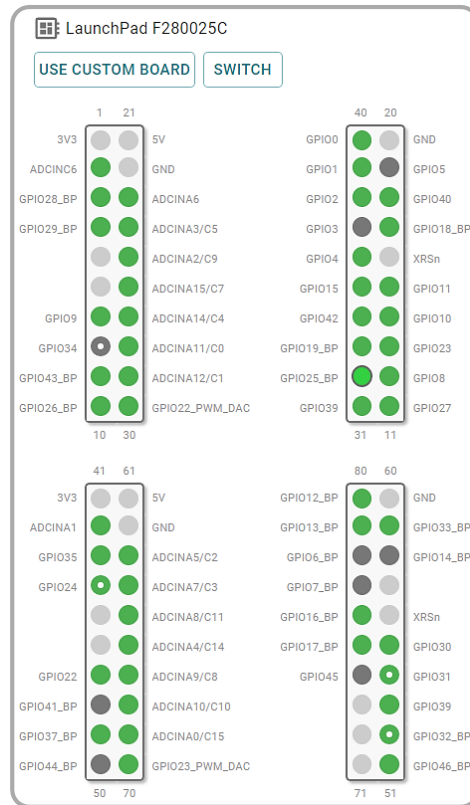


C2000 SysConfig Board Support **GUI-Based Configuration Tool for C2000 MCUs**

Integrated LaunchPad and controlCARD View

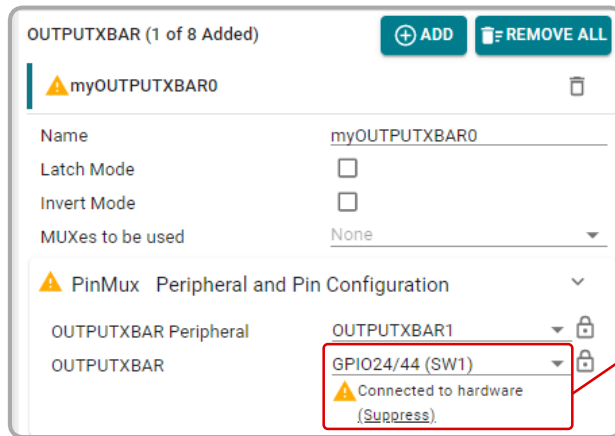
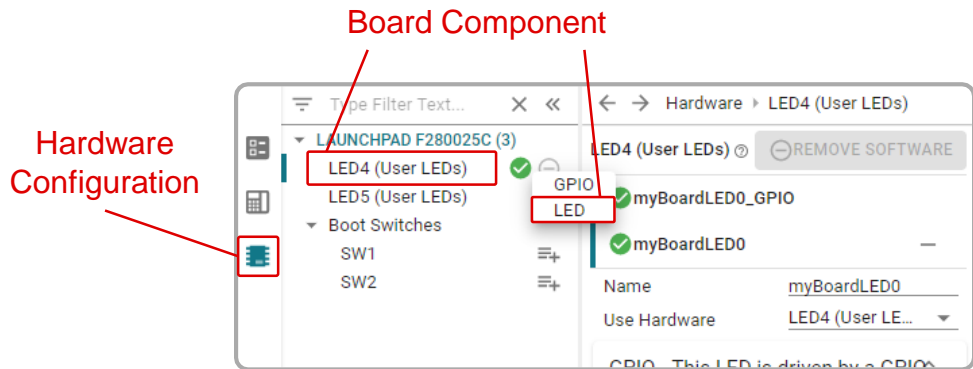
Board View Support Facilitates Testing on EVMs

- SysConfig has support for visualizing pin usage on TI devices
 - Helpful when developing and testing a design on C2000 LaunchPad or controlCARD
- Hover over headers to view all Mux options
- Board View Support provides quick links to technical documentation for current board and C2000 device



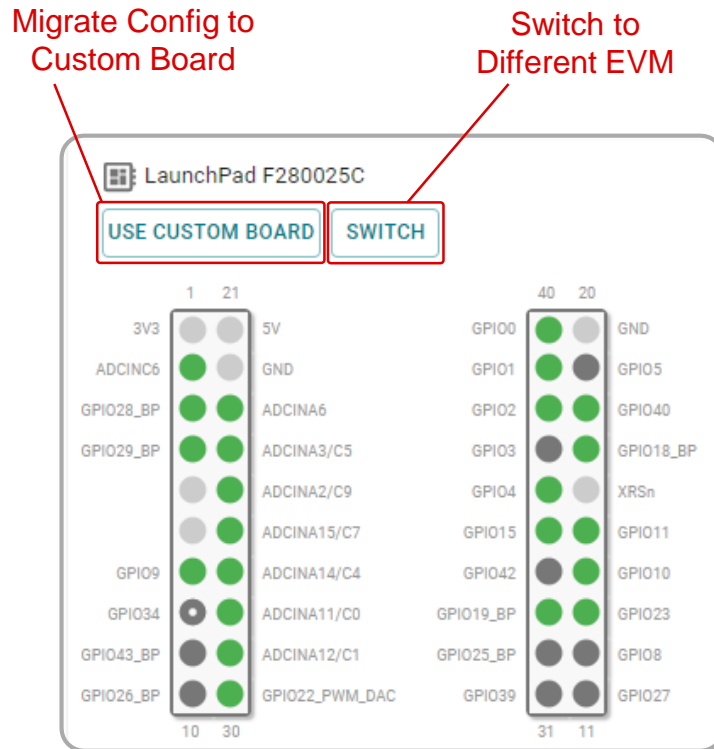
Configurations Tailored to Board

- Board-dependent components are completely configurable
- Selecting a specific component (i.e., LED4) automatically reserves peripheral and GPIO number
- Warnings are displayed when using a pin signal that is connected to a board component



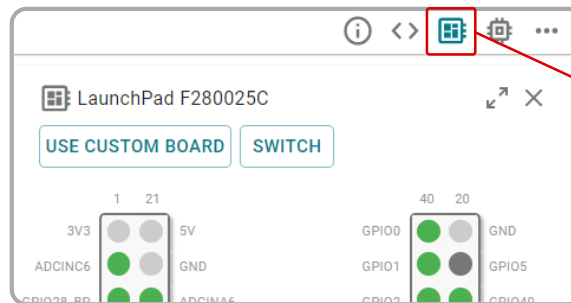
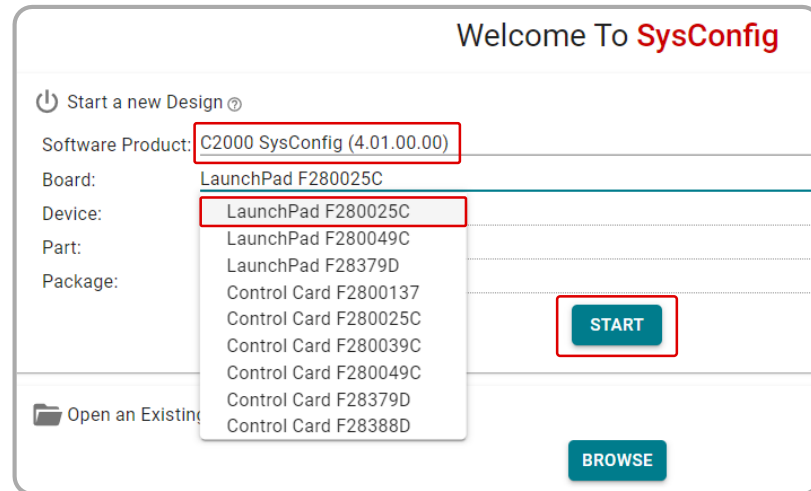
Easy Migration to Different EVM or Custom Board

- SysConfig can automatically port device configurations to other C2000 devices
 - Migrate to different EVM of same device
 - LAUNCHXL-F280049C → TMDSCNCD280049C
 - Migrate to EVM of different device family
 - LAUNCHXL-F280025C → LAUNCHXL-F280039C
 - Migrate to custom board
- Board components are transferred to equivalent component even if mapped GPIO is different



Getting Started with SysConfig Board View

- Begin by launching SysConfig and selecting the latest version of “C2000 SysConfig”
- Select the current LaunchPad or controlCard being used
 - Device, Part, and Package info will automatically populate
- Click “Start” to launch SysConfig
- Select **Board** icon from right panel



Board
Support View

Helpful SysConfig Resources

- Test out [SysConfig in the Cloud](#)
- Download [Standalone SysConfig Tool](#)
- Learning Material
 - Application Report: [C2000 SysConfig](#)
 - SysConfig Training Module and Hands-On Lab in [C2000 Academy](#)
 - [Speed Up Development With C2000™ Real-Time MCUs Using SysConfig](#)
 - [C2000 SysConfig Software Guide](#)

Check Video Description for Additional Resources