

# AMC0x30R Precision, $\pm 1\text{V}$ Input, Basic and Reinforced Isolated Amplifiers With Single-Ended, Ratiometric Output

## 1 Features

- Linear input voltage range:  $\pm 1\text{V}$
- High input impedance:  $2.4\text{G}\Omega$  (typical)
- Supply voltage range:
  - High-side (VDD1):  $3.0\text{V}$  to  $5.5\text{V}$
  - Low-side (VDD2):  $3.0\text{V}$  to  $5.5\text{V}$
- Single-ended output, ratiometric to  $V_{\text{REFIN}}$ 
  - Reference Input:  $2.7\text{V}$  to  $5.5\text{V}$
- Low DC errors:
  - Offset error:  $\pm 1.5\text{mV}$  (maximum)
  - Offset drift:  $\pm 20\mu\text{V}/^\circ\text{C}$  (maximum)
  - Gain error:  $\pm 0.25\%$  (maximum)
  - Gain drift:  $\pm 40\text{ppm}/^\circ\text{C}$  (maximum)
  - Nonlinearity:  $\pm 0.025\%$  (maximum)
- High CMTI:  $150\text{V}/\text{ns}$  (minimum)
- Low EMI: Meets CISPR-11 and CISPR-25 standards
- Isolation ratings:
  - AMC0230R: Basic isolation
  - AMC0330R: Reinforced isolation
- Safety-related certifications:
  - DIN EN IEC 60747-17 (VDE 0884-17)
  - UL1577
- Fully specified over the extended industrial temperature range:  $-40^\circ\text{C}$  to  $+125^\circ\text{C}$

## 2 Applications

- Motor drives
- Photovoltaic inverters
- Server power supply units (PSU)
- EV charging stations

## 3 Description

The AMC0x30R is a precision, galvanically isolated amplifier with a  $\pm 1\text{V}$ , high impedance input and single-ended, ratiometric output. The high-impedance input is optimized for connection to a high-impedance resistive divider or other voltage signal source with high output resistance.

The isolation barrier separates parts of the system that operate on different common-mode voltage levels. The isolation barrier is highly resistant to magnetic interference. This barrier is certified to provide reinforced isolation up to  $5\text{kV}_{\text{RMS}}$  (DWV package) and basic isolation up to  $3\text{kV}_{\text{RMS}}$  (D package) (60s).

The AMC0x30R outputs a single-ended signal proportional to the input voltage. The full-scale output is set by the voltage applied to the REFIN pin. The output of the AMC0x30R is designed to connect directly to the input of an ADC. Connect REFIN to the same reference voltage as the ADC to match the dynamic input voltage range of the ADC.

The AMC0x30R comes in 8-pin, wide- and narrow-body SOIC packages, and is fully specified over the temperature range from  $-40^\circ\text{C}$  to  $+125^\circ\text{C}$ .

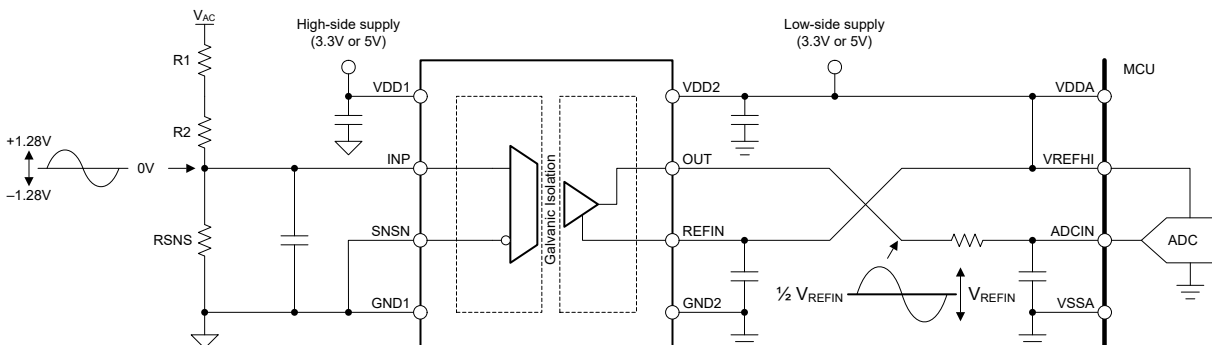
### Package Information

| PART NUMBER             | PACKAGE <sup>(1)</sup> | PACKAGE SIZE <sup>(2)</sup> |
|-------------------------|------------------------|-----------------------------|
| AMC0230R <sup>(3)</sup> | D (SOIC, 8)            | 4.9mm × 6mm                 |
| AMC0330R                | DWV (SOIC, 8)          | 5.85mm × 11.5mm             |

(1) For more information, see the *Mechanical, Packaging, and Orderable Information* addendum.

(2) The package size (length × width) is a nominal value and includes pins, where applicable.

(3) Product Preview information (not Production Data).



Typical Application



An IMPORTANT NOTICE at the end of this data sheet addresses availability, warranty, changes, use in safety-critical applications, intellectual property matters and other important disclaimers. UNLESS OTHERWISE NOTED, this document contains PRODUCTION DATA.

## Table of Contents

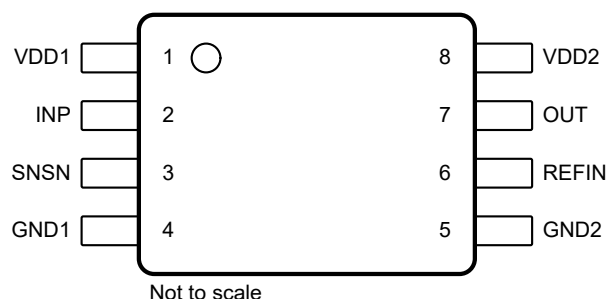
|  |           |  |           |
|--|-----------|--|-----------|
| <b>1 Features</b> .....  | <b>1</b>  | 6.17 Typical Characteristics.....                                | <b>13</b> |
| <b>2 Applications</b> .....                                    | <b>1</b>  | <b>7 Detailed Description</b> .....                              | <b>15</b> |
| <b>3 Description</b> .....                                     | <b>1</b>  | 7.1 Overview.....  | <b>15</b> |
| <b>4 Device Comparison Table</b> .....                         | <b>3</b>  | 7.2 Functional Block Diagram.....                                | <b>15</b> |
| <b>5 Pin Configuration and Functions</b> .....                 | <b>3</b>  | 7.3 Feature Description.....                                     | <b>15</b> |
| <b>6 Specifications</b> .....                                  | <b>4</b>  | 7.4 Device Functional Modes.....                                 | <b>19</b> |
| 6.1 Absolute Maximum Ratings .....                             | <b>4</b>  | <b>8 Application and Implementation</b> .....                    | <b>20</b> |
| 6.2 ESD Ratings.....   | <b>4</b>  | 8.1 Application Information.....                                 | <b>20</b> |
| 6.3 Recommended Operating Conditions .....                     | <b>4</b>  | 8.2 Typical Application.....                                     | <b>20</b> |
| 6.4 Thermal Information (D Package).....                       | <b>5</b>  | 8.3 Best Design Practices.....                                   | <b>23</b> |
| 6.5 Thermal Information (DWV Package).....                     | <b>5</b>  | 8.4 Power Supply Recommendations.....                            | <b>24</b> |
| 6.6 Power Ratings .....  | <b>5</b>  | 8.5 Layout.....  | <b>24</b> |
| 6.7 Insulation Specifications (Basic Isolation).....           | <b>6</b>  | <b>9 Device and Documentation Support</b> .....                  | <b>25</b> |
| 6.8 Insulation Specifications (Reinforced Isolation).....      | <b>7</b>  | 9.1 Documentation Support.....                                   | <b>25</b> |
| 6.9 Safety-Related Certifications (Basic Isolation).....       | <b>8</b>  | 9.2 Receiving Notification of Documentation Updates....          | <b>25</b> |
| 6.10 Safety-Related Certifications (Reinforced Isolation)..... | <b>8</b>  | 9.3 Support Resources.....                                       | <b>25</b> |
| 6.11 Safety Limiting Values (D Package).....                   | <b>9</b>  | 9.4 Trademarks.....  | <b>25</b> |
| 6.12 Safety Limiting Values (DWV Package).....                 | <b>9</b>  | 9.5 Electrostatic Discharge Caution.....                         | <b>25</b> |
| 6.13 Electrical Characteristics .....                          | <b>10</b> | 9.6 Glossary.....  | <b>25</b> |
| 6.14 Switching Characteristics .....                           | <b>11</b> | <b>10 Revision History</b> .....                                 | <b>25</b> |
| 6.15 Timing Diagram.....                                       | <b>11</b> | <b>11 Mechanical, Packaging, and Orderable Information</b> ..... | <b>25</b> |
| 6.16 Insulation Characteristics Curves.....                    | <b>12</b> |  |           |

## 4 Device Comparison Table

| PARAMETER                        | AMC0230R <sup>(1)</sup> | AMC0330R             |
|----------------------------------|-------------------------|----------------------|
| Isolation rating per VDE 0884-17 | Basic                   | Reinforced           |
| Package                          | Narrow-body SOIC (D)    | Wide-body SOIC (DWV) |

(1) Product Preview information (not Production Data).

## 5 Pin Configuration and Functions



**Figure 5-1. DWV and D Packages, 8-Pin SOIC (Top View)**

**Table 5-1. Pin Functions**

| PIN |       | TYPE             | DESCRIPTION  |
|-----|-------|------------------|--|
| NO. | NAME  |                  |  |
| 1   | VDD1  | High-side power  | High-side power supply <sup>(1)</sup>  |
| 2   | INP   | Analog input     | Analog input   |
| 3   | SNSN  | Analog input     | GND1 sense pin and inverting analog input to the amplifier. Connect to GND1.   |
| 4   | GND1  | High-side ground | High-side analog ground  |
| 5   | GND2  | Low-side ground  | Low-side analog ground   |
| 6   | REFIN | Analog input     | The voltage applied to this pin sets the full-scale output of the device. Internally, a 90kΩ resistor is connected from REFIN to GND2. |
| 7   | OUT   | Analog output    | Analog output  |
| 8   | VDD2  | Low-side power   | Low-side power supply <sup>(1)</sup>   |

(1) See the [Power Supply Recommendations](#) section for power-supply decoupling recommendations.

## 6 Specifications

### 6.1 Absolute Maximum Ratings

over operating free-air temperature range (unless otherwise noted)<sup>(1)</sup>

|                         |  | MIN        | MAX        | UNIT |
|-------------------------|--|------------|------------|------|
| Power-supply voltage    | High-side VDD1 to GND1                       | −0.3       | 6.5        | V    |
|                         | Low-side VDD2 to GND2                        | −0.3       | 6.5        |      |
| Analog input voltage    | INP, SNSN to GND1                            | GND1 − 3   | VDD1 + 0.5 | V    |
| Reference input voltage | REFIN to GND2                                | GND2 − 0.5 | VDD2 + 0.5 | V    |
| Analog output voltage   | OUT to GND2                                  | GND2 − 0.5 | VDD2 + 0.5 | V    |
| Input current           | Continuous, any pin except power-supply pins | −10        | 10         | mA   |
| Temperature             | Junction, T <sub>J</sub>                     |            | 150        | °C   |
|                         | Storage, T <sub>stg</sub>                    | −65        | 150        |      |

- (1) Operation outside the *Absolute Maximum Ratings* may cause permanent device damage. *Absolute Maximum Ratings* do not imply functional operation of the device at these or any other conditions beyond those listed under *Recommended Operating Conditions*. If used outside the Recommended Operating Conditions but within the Absolute Maximum Ratings, the device may not be fully functional, and this may affect device reliability, functionality, performance, and shorten the device lifetime.

### 6.2 ESD Ratings

|                    |                         |   | VALUE | UNIT |
|--------------------|-------------------------|---|-------|------|
| V <sub>(ESD)</sub> | Electrostatic discharge | Human-body model (HBM), per ANSI/ESDA/JEDEC JS-001 <sup>(1)</sup>     | ±2000 | V    |
|                    |                         | Charged-device model (CDM), per ANSI/ESDA/JEDEC JS-002 <sup>(2)</sup> | ±1000 |      |

- (1) JEDEC document JEP155 states that 500V HBM allows safe manufacturing with a standard ESD control process.

- (2) JEDEC document JEP157 states that 250V CDM allows safe manufacturing with a standard ESD control process.

### 6.3 Recommended Operating Conditions

over operating ambient temperature range (unless otherwise noted)

|                          |  |  |  | MIN   | NOM | MAX  | UNIT |
|--------------------------|--|--|--|-------|-----|------|------|
| <b>POWER SUPPLY</b>      |  |  |  |       |     |      |      |
| VDD1                     | High-side power supply                       | VDD1 to GND1   |  | 3     | 5.0 | 5.5  | V    |
| VDD2                     | Low-side power supply                        | VDD2 to GND2   |  | 3     | 3.3 | 5.5  | V    |
| <b>ANALOG INPUT</b>      |  |  |  |       |     |      |      |
| V <sub>Clipping</sub>    | Nominal input voltage before clipping output | V <sub>IN</sub> = V <sub>INP</sub> − V <sub>SNSN</sub> |  | −1.28 |     | 1.28 | V    |
| V <sub>FSR</sub>         | Specified linear input voltage               | V <sub>IN</sub> = V <sub>INP</sub> − V <sub>SNSN</sub> |  | −1    |     | 1    | V    |
| V <sub>REFIN</sub>       | Reference input voltage                      | REFIN to GND2  |  | 2.7   |     | VDD2 | V    |
| <b>ANALOG OUTPUT</b>     |  |  |  |       |     |      |      |
| C <sub>LOAD</sub>        | Capacitive load                              | OUT to GND2  |  |       |     | 500  | pF   |
| R <sub>LOAD</sub>        | Resistive load                               | OUT to GND2  |  |       | 10  | 1    | kΩ   |
| <b>TEMPERATURE RANGE</b> |  |  |  |       |     |      |      |
| T <sub>A</sub>           | Specified ambient temperature                |  |  | −40   |     | 125  | °C   |

## 6.4 Thermal Information (D Package)

| THERMAL METRIC <sup>(1)</sup> |  | D (SOIC) | UNIT |
|-------------------------------|--|----------|------|
|                               |  | 8 PINS   |      |
| R <sub>θJA</sub>              | Junction-to-ambient thermal resistance       | 116.5    | °C/W |
| R <sub>θJC(top)</sub>         | Junction-to-case (top) thermal resistance    | 52.8     | °C/W |
| R <sub>θJB</sub>              | Junction-to-board thermal resistance         | 58.9     | °C/W |
| Ψ <sub>JT</sub>               | Junction-to-top characterization parameter   | 19.4     | °C/W |
| Ψ <sub>JB</sub>               | Junction-to-board characterization parameter | 58.0     | °C/W |
| R <sub>θJC(bot)</sub>         | Junction-to-case (bottom) thermal resistance | N/A      | °C/W |

(1) For more information about traditional and new thermal metrics, see the [Semiconductor and IC Package Thermal Metrics](#) application note.

## 6.5 Thermal Information (DWV Package)

| THERMAL METRIC <sup>(1)</sup> |  | DWV (SOIC) | UNIT |
|-------------------------------|--|------------|------|
|                               |  | 8 PINS     |      |
| R <sub>θJA</sub>              | Junction-to-ambient thermal resistance       | 102.8      | °C/W |
| R <sub>θJC(top)</sub>         | Junction-to-case (top) thermal resistance    | 45.1       | °C/W |
| R <sub>θJB</sub>              | Junction-to-board thermal resistance         | 63.0       | °C/W |
| Ψ <sub>JT</sub>               | Junction-to-top characterization parameter   | 14.3       | °C/W |
| Ψ <sub>JB</sub>               | Junction-to-board characterization parameter | 61.1       | °C/W |
| R <sub>θJC(bot)</sub>         | Junction-to-case (bottom) thermal resistance | N/A        | °C/W |

(1) For more information about traditional and new thermal metrics, see the [Semiconductor and IC Package Thermal Metrics](#) application note.

## 6.6 Power Ratings

| PARAMETER       |  | TEST CONDITIONS    | VALUE | UNIT |
|-----------------|--|--------------------|-------|------|
| P <sub>D</sub>  | Maximum power dissipation (both sides) | VDD1 = VDD2 = 5.5V | 72    | mW   |
| P <sub>D1</sub> | Maximum power dissipation (high-side)  | VDD1 = 5.5V        | 31    | mW   |
| P <sub>D2</sub> | Maximum power dissipation (low-side)   | VDD2 = 5.5V        | 41    | mW   |

## 6.7 Insulation Specifications (Basic Isolation)

over operating ambient temperature range (unless otherwise noted)

| PARAMETER  |   | TEST CONDITIONS   | VALUE              | UNIT             |
|--|---|---|--------------------|------------------|
| GENERAL  |   |   |                    |                  |
| CLR  | External clearance <sup>(1)</sup>                     | Shortest pin-to-pin distance through air  | ≥ 4                | mm               |
| CPG  | External creepage <sup>(1)</sup>                      | Shortest pin-to-pin distance across the package surface   | ≥ 4                | mm               |
| DTI  | Distance through insulation                           | Minimum internal gap (internal clearance) of the insulation   | ≥ 15.4             | μm               |
| CTI  | Comparative tracking index                            | DIN EN 60112 (VDE 0303-11); IEC 60112   | ≥ 600              | V                |
|  | Material group  | According to IEC 60664-1  | I                  |                  |
|  | Overvoltage category per IEC 60664-1                  | Rated mains voltage ≤ 300V <sub>RMS</sub>   | I-IV               |                  |
|  |   | Rated mains voltage ≤ 600V <sub>RMS</sub>   | I-III              |                  |
| DIN EN IEC 60747-17 (VDE 0884-17) <sup>(2)</sup> |   |   |                    |                  |
| V <sub>IORM</sub>                                | Maximum repetitive peak isolation voltage             | At AC voltage   | 1130               | V <sub>PK</sub>  |
| V <sub>IOWM</sub>                                | Maximum-rated isolation working voltage               | At AC voltage (sine wave)   | 800                | V <sub>RMS</sub> |
|  |   | At DC voltage   | 1130               | V <sub>DC</sub>  |
| V <sub>IOTM</sub>                                | Maximum transient isolation voltage                   | V <sub>TEST</sub> = V <sub>IOTM</sub> , t = 60s (qualification test),<br>V <sub>TEST</sub> = 1.2 × V <sub>IOTM</sub> , t = 1s (100% production test)  | 4250               | V <sub>PK</sub>  |
| V <sub>IMP</sub>                                 | Maximum impulse voltage <sup>(3)</sup>                | Tested in air, 1.2/50μs waveform per IEC 62368-1  | 5000               | V <sub>PK</sub>  |
| V <sub>IOSM</sub>                                | Maximum surge isolation voltage <sup>(4)</sup>        | Tested in oil (qualification test),<br>1.2/50μs waveform per IEC 62368-1  | 10000              | V <sub>PK</sub>  |
| q <sub>pd</sub>                                  | Apparent charge <sup>(5)</sup>                        | Method a, after input/output safety test subgroups 2 and 3,<br>V <sub>pd(ini)</sub> = V <sub>IOTM</sub> , t <sub>ini</sub> = 60s, V <sub>pd(m)</sub> = 1.2 × V <sub>IORM</sub> , t <sub>m</sub> = 10s | ≤ 5                | pC               |
|  |   | Method a, after environmental tests subgroup 1,<br>V <sub>pd(ini)</sub> = V <sub>IOTM</sub> , t <sub>ini</sub> = 60s, V <sub>pd(m)</sub> = 1.3 × V <sub>IORM</sub> , t <sub>m</sub> = 10s             | ≤ 5                |                  |
|  |   | Method b1, at preconditioning (type test) and routine test,<br>V <sub>pd(ini)</sub> = V <sub>IOTM</sub> , t <sub>ini</sub> = 1s, V <sub>pd(m)</sub> = 1.5 × V <sub>IORM</sub> , t <sub>m</sub> = 1s   | ≤ 5                |                  |
|  |   | Method b2, at routine test (100% production) <sup>(7)</sup> ,<br>V <sub>pd(ini)</sub> = V <sub>IOTM</sub> = V <sub>pd(m)</sub> , t <sub>ini</sub> = t <sub>m</sub> = 1s                               | ≤ 5                |                  |
| C <sub>IO</sub>                                  | Barrier capacitance, input to output <sup>(6)</sup>   | V <sub>IO</sub> = 0.5V <sub>PP</sub> at 1MHz  | ≈1.5               | pF               |
| R <sub>IO</sub>                                  | Insulation resistance, input to output <sup>(6)</sup> | V <sub>IO</sub> = 500V at T <sub>A</sub> = 25°C   | > 10 <sup>12</sup> | Ω                |
|  |   | V <sub>IO</sub> = 500V at 100°C ≤ T <sub>A</sub> ≤ 125°C  | > 10 <sup>11</sup> |                  |
|  |   | V <sub>IO</sub> = 500V at T <sub>S</sub> = 150°C  | > 10 <sup>9</sup>  |                  |
|  | Pollution degree                                      |   | 2                  |                  |
|  | Climatic category                                     |   | 55/125/21          |                  |
| UL1577   |   |   |                    |                  |
| V <sub>ISO</sub>                                 | Withstand isolation voltage                           | V <sub>TEST</sub> = V <sub>ISO</sub> , t = 60s (qualification test),<br>V <sub>TEST</sub> = 1.2 × V <sub>ISO</sub> , t = 1s (100% production test)  | 3000               | V <sub>RMS</sub> |

- (1) Apply creepage and clearance requirements according to the specific equipment isolation standards of an application. Maintain the creepage and clearance distance of a board design to make sure that the mounting pads of the isolator on the printed circuit board (PCB) do not reduce this distance. Creepage and clearance on a PCB become equal in certain cases. Techniques such as inserting grooves, ribs, or both on a PCB are used to help increase these specifications.
- (2) This coupler is suitable for *safe electrical insulation* only within the safety ratings. Compliance with the safety ratings shall be ensured by means of suitable protective circuits.
- (3) Testing is carried out in air to determine the surge immunity of the package.
- (4) Testing is carried out in oil to determine the intrinsic surge immunity of the isolation barrier.
- (5) Apparent charge is electrical discharge caused by a partial discharge (pd).
- (6) All pins on each side of the barrier are tied together, creating a two-pin device.
- (7) Either method b1 or b2 is used in production.

## 6.8 Insulation Specifications (Reinforced Isolation)

over operating ambient temperature range (unless otherwise noted)

| PARAMETER  |   | TEST CONDITIONS   | VALUE              | UNIT             |
|--|---|---|--------------------|------------------|
| GENERAL  |   |   |                    |                  |
| CLR  | External clearance <sup>(1)</sup>                     | Shortest pin-to-pin distance through air  | ≥ 8.5              | mm               |
| CPG  | External creepage <sup>(1)</sup>                      | Shortest pin-to-pin distance across the package surface   | ≥ 8.5              | mm               |
| DTI  | Distance through insulation                           | Minimum internal gap (internal clearance) of the double insulation  | ≥ 15.4             | μm               |
| CTI  | Comparative tracking index                            | DIN EN 60112 (VDE 0303-11); IEC 60112   | ≥ 600              | V                |
|  | Material group  | According to IEC 60664-1  | I                  |                  |
|  | Overvoltage category per IEC 60664-1                  | Rated mains voltage ≤ 300V <sub>RMS</sub>   | I-IV               |                  |
|  |   | Rated mains voltage ≤ 6000V <sub>RMS</sub>  | I-III              |                  |
| DIN EN IEC 60747-17 (VDE 0884-17) <sup>(2)</sup> |   |   |                    |                  |
| V <sub>IORM</sub>                                | Maximum repetitive peak isolation voltage             | At AC voltage   | 2120               | V <sub>PK</sub>  |
| V <sub>IOWM</sub>                                | Maximum-rated isolation working voltage               | At AC voltage (sine wave)   | 1500               | V <sub>RMS</sub> |
|  |   | At DC voltage   | 2120               | V <sub>DC</sub>  |
| V <sub>IOTM</sub>                                | Maximum transient isolation voltage                   | V <sub>TEST</sub> = V <sub>IOTM</sub> , t = 60s (qualification test),<br>V <sub>TEST</sub> = 1.2 × V <sub>IOTM</sub> , t = 1s (100% production test)  | 7000               | V <sub>PK</sub>  |
| V <sub>IMP</sub>                                 | Maximum impulse voltage <sup>(3)</sup>                | Tested in air, 1.2/50μs waveform per IEC 62368-1  | 7700               | V <sub>PK</sub>  |
| V <sub>IOSM</sub>                                | Maximum surge isolation voltage <sup>(4)</sup>        | Tested in oil (qualification test),<br>1.2/50μs waveform per IEC 62368-1  | 10000              | V <sub>PK</sub>  |
| q <sub>pd</sub>                                  | Apparent charge <sup>(5)</sup>                        | Method a, after input/output safety test subgroups 2 and 3,<br>V <sub>pd(ini)</sub> = V <sub>IOTM</sub> , t <sub>ini</sub> = 60s, V <sub>pd(m)</sub> = 1.2 × V <sub>IORM</sub> , t <sub>m</sub> = 10s       | ≤ 5                | pC               |
|  |   | Method a, after environmental tests subgroup 1,<br>V <sub>pd(ini)</sub> = V <sub>IOTM</sub> , t <sub>ini</sub> = 60s, V <sub>pd(m)</sub> = 1.6 × V <sub>IORM</sub> , t <sub>m</sub> = 10s                   | ≤ 5                |                  |
|  |   | Method b1, at preconditioning (type test) and routine test,<br>V <sub>pd(ini)</sub> = 1.2 × V <sub>IOTM</sub> , t <sub>ini</sub> = 1s, V <sub>pd(m)</sub> = 1.875 × V <sub>IORM</sub> , t <sub>m</sub> = 1s | ≤ 5                |                  |
|  |   | Method b2, at routine test (100% production) <sup>(7)</sup><br>V <sub>pd(ini)</sub> = V <sub>pd(m)</sub> = 1.2 × V <sub>IOTM</sub> , t <sub>ini</sub> = t <sub>m</sub> = 1s                                 | ≤ 5                |                  |
| C <sub>IO</sub>                                  | Barrier capacitance, input to output <sup>(6)</sup>   | V <sub>IO</sub> = 0.5V <sub>PP</sub> at 1MHz  | ≈1.5               | pF               |
| R <sub>IO</sub>                                  | Insulation resistance, input to output <sup>(6)</sup> | V <sub>IO</sub> = 500V at T <sub>A</sub> = 25°C   | > 10 <sup>12</sup> | Ω                |
|  |   | V <sub>IO</sub> = 500V at 100°C ≤ T <sub>A</sub> ≤ 125°C  | > 10 <sup>11</sup> |                  |
|  |   | V <sub>IO</sub> = 500V at T <sub>S</sub> = 150°C  | > 10 <sup>9</sup>  |                  |
|  | Pollution degree                                      |   | 2                  |                  |
|  | Climatic category                                     |   | 55/125/21          |                  |
| UL1577   |   |   |                    |                  |
| V <sub>ISO</sub>                                 | Withstand isolation voltage                           | V <sub>TEST</sub> = V <sub>ISO</sub> , t = 60s (qualification test),<br>V <sub>TEST</sub> = 1.2 × V <sub>ISO</sub> , t = 1s (100% production test)  | 5000               | V <sub>RMS</sub> |

- (1) Apply creepage and clearance requirements according to the specific equipment isolation standards of an application. Maintain the creepage and clearance distance of a board design to make sure that the mounting pads of the isolator on the printed circuit board (PCB) do not reduce this distance. Creepage and clearance on a PCB become equal in certain cases. Techniques such as inserting grooves, ribs, or both on a PCB are used to help increase these specifications.
- (2) This coupler is suitable for *safe electrical insulation* only within the safety ratings. Compliance with the safety ratings shall be ensured by means of suitable protective circuits.
- (3) Testing is carried out in air to determine the surge immunity of the package.
- (4) Testing is carried in oil to determine the intrinsic surge immunity of the isolation barrier.
- (5) Apparent charge is electrical discharge caused by a partial discharge (pd).
- (6) All pins on each side of the barrier are tied together, creating a two-pin device.
- (7) Either method b1 or b2 is used in production.

## 6.9 Safety-Related Certifications (Basic Isolation)

| VDE   | UL  |
|---|---|
| DIN EN IEC 60747-17 (VDE 0884-17),<br>EN IEC 60747-17,<br>DIN EN 61010-1 (VDE 0411-1) Clause : 6.4.3 ; 6.7.1.3 ; 6.7.2.1 ;<br>6.7.2.2 ; 6.7.3.4.2 ; 6.8.3.1 | Recognized under 1577 component recognition and<br>CSA component acceptance NO 5 programs |
| Basic insulation  | Single protection   |
| Certificate number: Pending   | File number: Pending  |

## 6.10 Safety-Related Certifications (Reinforced Isolation)

| VDE   | UL  |
|---|---|
| DIN EN IEC 60747-17 (VDE 0884-17),<br>EN IEC 60747-17,<br>DIN EN IEC 62368-1 (VDE 0868-1),<br>EN IEC 62368-1,<br>IEC 62368-1 Clause : 5.4.3 ; 5.4.4.4 ; 5.4.9 | Recognized under 1577 component recognition and<br>CSA component acceptance NO 5 programs |
| Reinforced insulation   | Single protection   |
| Certificate number: Pending   | File number: Pending  |



## 6.11 Safety Limiting Values (D Package)

Safety limiting<sup>(1)</sup> intends to minimize potential damage to the isolation barrier upon failure of input or output circuitry. A failure of the I/O can allow low resistance to ground or the supply and, without current limiting, dissipate sufficient power to over-heat the die and damage the isolation barrier potentially leading to secondary system failures.

| PARAMETER |   | TEST CONDITIONS   | MIN | TYP | MAX  | UNIT             |
|-----------|---|---|-----|-----|------|------------------|
| $I_S$     | Safety input, output, or supply current | $R_{\theta JA} = 116.5^\circ\text{C/W}$ , $V_{DDx} = 5.5\text{V}$ ,<br>$T_J = 150^\circ\text{C}$ , $T_A = 25^\circ\text{C}$ |     |     | 195  | mA               |
| $P_S$     | Safety input, output, or total power    | $R_{\theta JA} = 116.5^\circ\text{C/W}$ , $T_J = 150^\circ\text{C}$ , $T_A = 25^\circ\text{C}$                              |     |     | 1070 | mW               |
| $T_S$     | Maximum safety temperature              |   |     |     | 150  | $^\circ\text{C}$ |

- (1) The maximum safety temperature,  $T_S$ , has the same value as the maximum junction temperature,  $T_J$ , specified for the device. The  $I_S$  and  $P_S$  parameters represent the safety current and safety power, respectively. Do not exceed the maximum limits of  $I_S$  and  $P_S$ . These limits vary with the ambient temperature,  $T_A$ .  
The junction-to-air thermal resistance,  $R_{\theta JA}$ , in the Thermal Information table is that of a device installed on a high-K test board for leaded surface-mount packages. Use these equations to calculate the value for each parameter:  
 $T_J = T_A + R_{\theta JA} \times P$ , where  $P$  is the power dissipated in the device.  
 $T_{J(max)} = T_S = T_A + R_{\theta JA} \times P_S$ , where  $T_{J(max)}$  is the maximum junction temperature.  
 $P_S = I_S \times V_{DD_{max}}$ , where  $V_{DD_{max}}$  is the maximum supply voltage for high-side and low-side.

## 6.12 Safety Limiting Values (DWV Package)

Safety limiting<sup>(1)</sup> intends to minimize potential damage to the isolation barrier upon failure of input or output circuitry. A failure of the I/O can allow low resistance to ground or the supply and, without current limiting, dissipate sufficient power to over-heat the die and damage the isolation barrier potentially leading to secondary system failures.

| PARAMETER |   | TEST CONDITIONS   | MIN | TYP | MAX  | UNIT             |
|-----------|---|---|-----|-----|------|------------------|
| $I_S$     | Safety input, output, or supply current | $R_{\theta JA} = 102.8^\circ\text{C/W}$ , $V_{DDx} = 5.5\text{V}$ ,<br>$T_J = 150^\circ\text{C}$ , $T_A = 25^\circ\text{C}$ |     |     | 220  | mA               |
| $P_S$     | Safety input, output, or total power    | $R_{\theta JA} = 102.8^\circ\text{C/W}$ , $T_J = 150^\circ\text{C}$ , $T_A = 25^\circ\text{C}$                              |     |     | 1210 | mW               |
| $T_S$     | Maximum safety temperature              |   |     |     | 150  | $^\circ\text{C}$ |

- (1) The maximum safety temperature,  $T_S$ , has the same value as the maximum junction temperature,  $T_J$ , specified for the device. The  $I_S$  and  $P_S$  parameters represent the safety current and safety power, respectively. Do not exceed the maximum limits of  $I_S$  and  $P_S$ . These limits vary with the ambient temperature,  $T_A$ .  
The junction-to-air thermal resistance,  $R_{\theta JA}$ , in the Thermal Information table is that of a device installed on a high-K test board for leaded surface-mount packages. Use these equations to calculate the value for each parameter:  
 $T_J = T_A + R_{\theta JA} \times P$ , where  $P$  is the power dissipated in the device.  
 $T_{J(max)} = T_S = T_A + R_{\theta JA} \times P_S$ , where  $T_{J(max)}$  is the maximum junction temperature.  
 $P_S = I_S \times V_{DD_{max}}$ , where  $V_{DD_{max}}$  is the maximum supply voltage for high-side and low-side.

## 6.13 Electrical Characteristics

minimum and maximum specifications apply from  $T_A = -40^\circ\text{C}$  to  $+125^\circ\text{C}$ ,  $V_{DD1} = 3.0\text{V}$  to  $5.5\text{V}$ ,  $V_{DD2} = 3.0\text{V}$  to  $5.5\text{V}$ ,  $V_{REFIN} = 3.3\text{V}$ ,  $SNSN = \text{GND1}$ ,  $V_{INP} = -1\text{V}$  to  $1\text{V}$  (unless otherwise noted); typical specifications are at  $T_A = 25^\circ\text{C}$ ,  $V_{DD1} = 5\text{V}$ , and  $V_{DD2} = 3.3\text{V}$

| PARAMETER          |   | TEST CONDITIONS   | MIN                              | TYP    | MAX    | UNIT   |
|--------------------|---|---|----------------------------------|--------|--------|--------|
| ANALOG INPUT       |   |   |                                  |        |        |        |
| C <sub>IN</sub>    | Input capacitance                                 |   | 2                                |        |        | pF     |
| R <sub>INP</sub>   | Input impedance                                   | INP pin, T <sub>A</sub> = 25°C  | 0.05                             | 2.4    |        | GΩ     |
| I <sub>IB</sub>    | Input bias current                                | INP = GND1, T <sub>A</sub> = 25°C   | −10                              | ±3     | 10     | nA     |
| CMTI               | Common-mode transient immunity                    |   | 150                              |        |        | V/ns   |
| ANALOG OUTPUT      |   |   |                                  |        |        |        |
|                    | Nominal gain                                      |   | $V_{REFIN} / 2 /  V_{Clipping} $ |        |        | V/V    |
| R <sub>OUT</sub>   | Output resistance                                 | OUTP or OUTN  | <0.2                             |        |        | Ω      |
|                    | Output short-circuit current                      | sourcing or sinking,<br>INP = GND1, output shorted to<br>either GND or VDD2                           | 11                               |        |        | mA     |
| DC ACCURACY        |   |   |                                  |        |        |        |
| V <sub>OS</sub>    | Input offset voltage <sup>(1) (2)</sup>           | INP = GND1, VDD2 = 3.3V, V <sub>REFIN</sub> =<br>3.3V, T <sub>A</sub> = 25°C                          | −1.5                             | ±0.1   | 1.5    | mV     |
| TCV <sub>OS</sub>  | Input offset thermal drift <sup>(1) (2) (4)</sup> |   | −20                              | ±2     | 20     | μV/°C  |
| E <sub>G</sub>     | Gain error <sup>(1)</sup>                         | T <sub>A</sub> = 25°C   | −0.25%                           | ±0.04% | 0.25%  |        |
| TCE <sub>G</sub>   | Gain error drift <sup>(1) (5)</sup>               |   | −40                              | ±5     | 40     | ppm/°C |
|                    | Nonlinearity <sup>(1)</sup>                       |   | −0.025%                          | ±0.01% | 0.025% |        |
|                    | Output noise                                      | INP = GND1, BW = 50kHz  | 160                              |        |        | μVrms  |
| PSRR               | Power-supply rejection ratio <sup>(2)</sup>       | VDD1 DC PSRR, INP = GND1,<br>VDD1 from 3V to 5.5V   | −77                              |        |        | dB     |
|                    |   | VDD1 AC PSRR, INP = GND1,<br>VDD1 with 10kHz / 100mV ripple   | −60                              |        |        |        |
|                    |   | VDD2 DC PSRR, INP = GND1,<br>VDD2 from 3V to 5.5V   | −100                             |        |        |        |
|                    |   | VDD2 AC PSRR, INP = GND1,<br>VDD2 with 10kHz / 100mV ripple   | −74                              |        |        |        |
| AC ACCURACY        |   |   |                                  |        |        |        |
| BW                 | Output bandwidth                                  |   | 120                              | 145    |        | kHz    |
| THD                | Total harmonic distortion <sup>(3)</sup>          | V <sub>INP</sub> = 2V <sub>PP</sub> , V <sub>INP</sub> > 0V,<br>f <sub>INP</sub> = 10kHz, BW = 100kHz |                                  | −80    | −75    | dB     |
| SNR                | Signal-to-noise ratio                             | V <sub>INP</sub> = 2.25V <sub>PP</sub> , f <sub>INP</sub> = 1kHz, BW = 10kHz                          | 78                               | 82     |        | dB     |
|                    |   | V <sub>INP</sub> = 2.25V <sub>PP</sub> , f <sub>INP</sub> = 10kHz, BW =<br>50kHz                      |                                  | 75     |        |        |
| POWER SUPPLY       |   |   |                                  |        |        |        |
| I <sub>DD1</sub>   | High-side supply current                          |   |                                  | 4.3    | 5.6    | mA     |
| I <sub>DD2</sub>   | Low-side supply current                           |   |                                  | 4.8    | 7.4    | mA     |
| VDD1 <sub>UV</sub> | High-side undervoltage detection<br>threshold     | VDD1 rising   | 2.4                              | 2.6    | 2.8    | V      |
|                    |   | VDD1 falling  | 1.9                              | 2.05   | 2.2    |        |
| VDD2 <sub>UV</sub> | Low-side undervoltage detection<br>threshold      | VDD2 rising   | 2.3                              | 2.5    | 2.7    | V      |
|                    |   | VDD2 falling  | 1.9                              | 2.05   | 2.2    |        |

(1) The typical value includes one standard deviation (*sigma*) at nominal operating conditions.

(2) This parameter is input referred.

(3) THD is the ratio of the rms sum of the amplitudes of first five higher harmonics to the amplitude of the fundamental.

(4) Offset error temperature drift is calculated using the box method, as described by the following equation:

$$TCV_{OS} = (Value_{MAX} - Value_{MIN}) / TempRange$$

- (5) Gain error temperature drift is calculated using the box method, as described by the following equation:

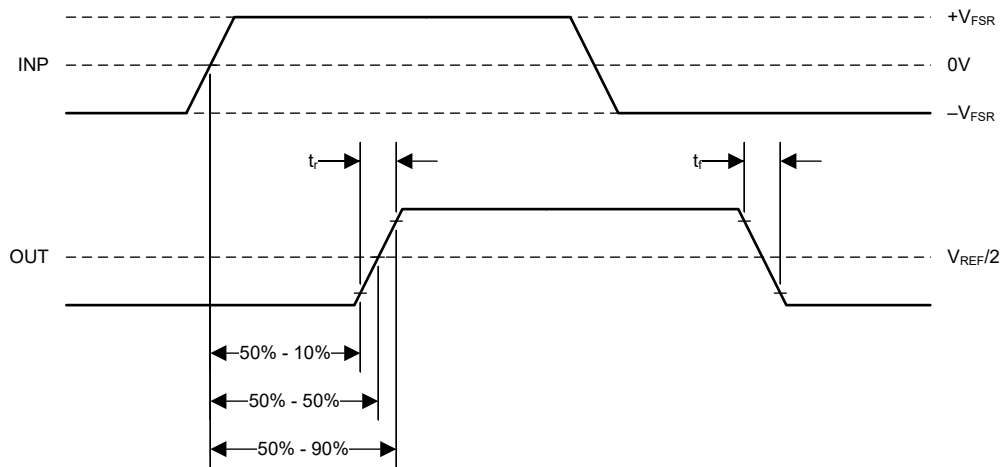
$$TCE_G (ppm) = (Value_{MAX} - Value_{MIN}) / (Value_{(T=25^{\circ}C)} \times TempRange) \times 10^6$$

## 6.14 Switching Characteristics

over operating ambient temperature range (unless otherwise noted)

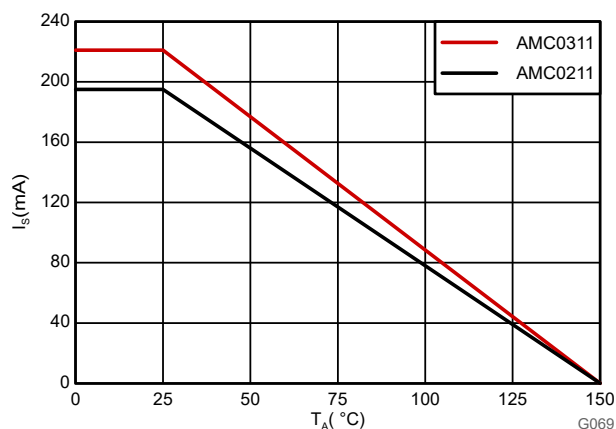
| PARAMETER |   | TEST CONDITIONS   | MIN | TYP | MAX | UNIT    |
|-----------|---|---|-----|-----|-----|---------|
| $t_r$     | Output signal rise time                         | 10% to 90%, unfiltered output   |     | 2.6 |     | $\mu s$ |
| $t_f$     | Output signal fall time                         | 10% to 90%, unfiltered output   |     | 2.6 |     | $\mu s$ |
|           | $V_{INP}$ to $V_{OUT}$ signal delay (50% – 10%) | Unfiltered output   |     | 1.6 |     | $\mu s$ |
|           | $V_{INP}$ to $V_{OUT}$ signal delay (50% – 50%) | Unfiltered output   |     | 2.9 | 3.2 | $\mu s$ |
|           | $V_{INP}$ to $V_{OUT}$ signal delay (50% – 90%) | Unfiltered output   |     | 4.3 |     | $\mu s$ |
| $t_{AS}$  | Analog settling time                            | VDD1 step to 3.0V with VDD2 $\geq$ 3.0V to $V_{OUT}$ valid, 0.1% settling |     | 20  | 100 | $\mu s$ |

## 6.15 Timing Diagram

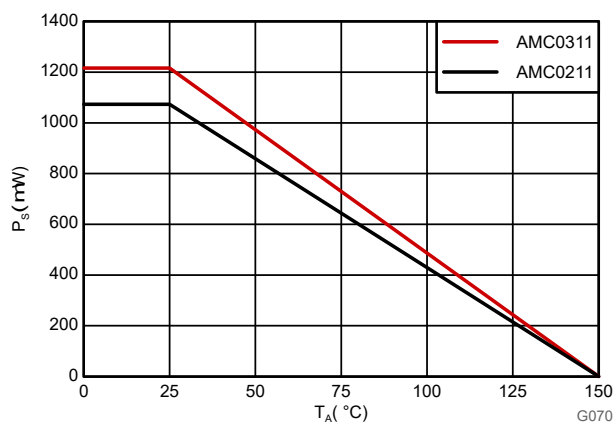


**Figure 6-1. Rise, Fall, and Delay Time Definition**

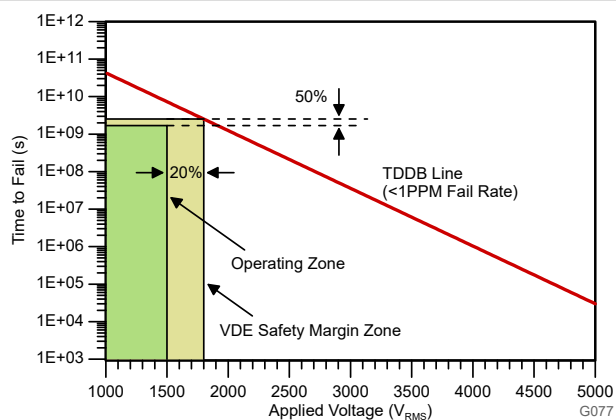
## 6.16 Insulation Characteristics Curves



**Figure 6-2. Thermal Derating Curve for Safety-Limiting Current per VDE**

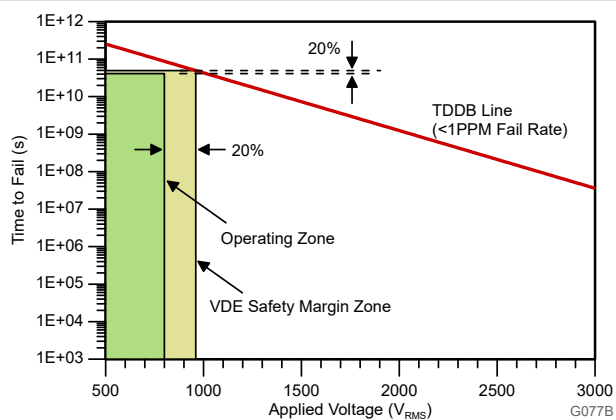


**Figure 6-3. Thermal Derating Curve for Safety-Limiting Power per VDE**



$T_A$  up to 150°C, stress-voltage frequency = 60Hz, isolation  
working voltage = 1500V<sub>RMS</sub>,  
projected operating lifetime ≥50 years

**Figure 6-4. Isolation Capacitor Lifetime Projection (Reinforced Isolation)**

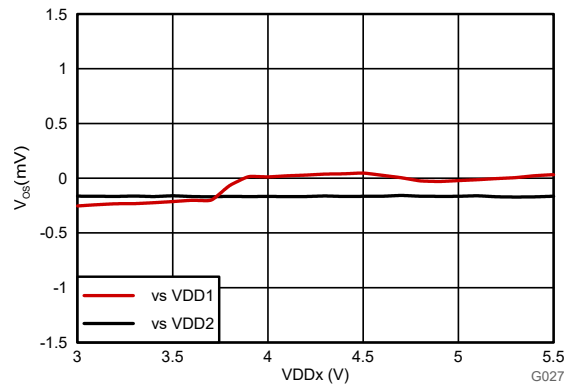


$T_A$  up to 150°C, stress-voltage frequency = 60Hz, isolation  
working voltage = 800V<sub>RMS</sub>,  
projected operating lifetime >>100 years

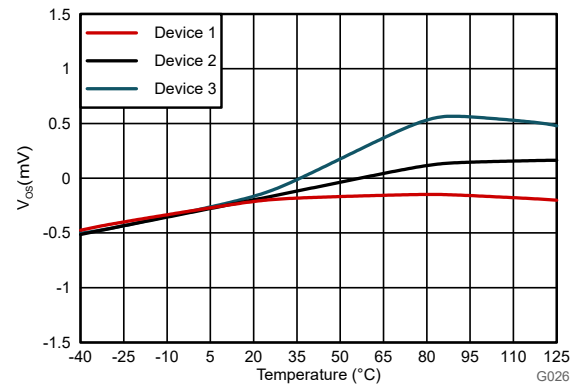
**Figure 6-5. Isolation Capacitor Lifetime Projection (Basic Isolation)**

## 6.17 Typical Characteristics

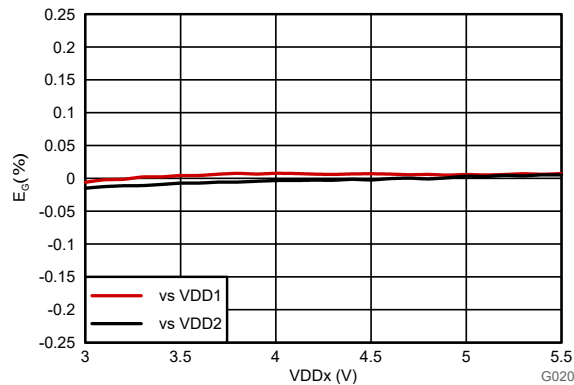
at VDD1 = 5V, VDD2 = 3.3V, SNSN = GND1,  $f_{IN} = 10\text{kHz}$ , and BW = 100kHz (unless otherwise noted)



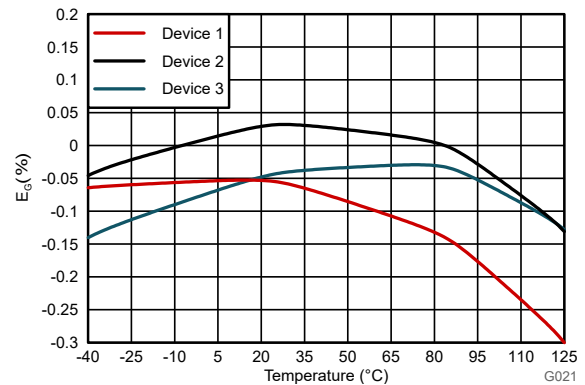
**Figure 6-6. Input Offset Voltage vs Supply Voltage**



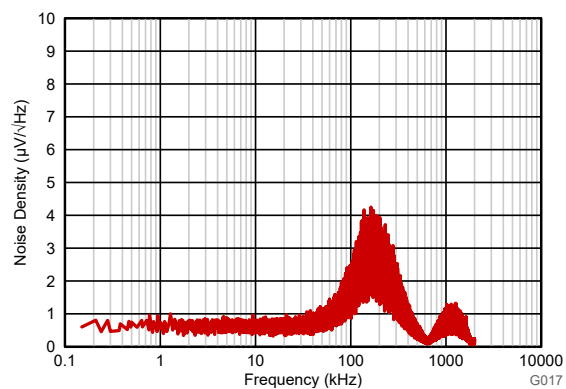
**Figure 6-7. Input Offset Voltage vs Temperature**



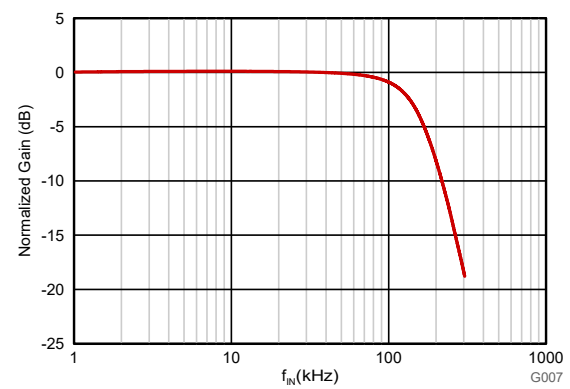
**Figure 6-8. Gain Error vs Supply Voltage**



**Figure 6-9. Gain Error vs Temperature**



**Figure 6-10. Input-Referred Noise Density vs Frequency**



**Figure 6-11. Normalized Gain vs Input Frequency**

## 6.17 Typical Characteristics (continued)

at VDD1 = 5V, VDD2 = 3.3V, SNSN = GND1,  $f_{IN} = 10\text{kHz}$ , and BW = 100kHz (unless otherwise noted)

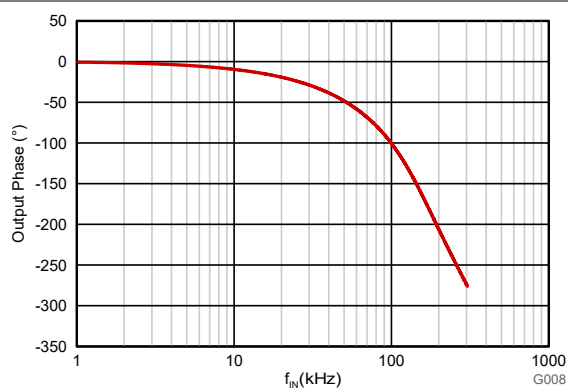


Figure 6-12. Output Phase vs Input Frequency

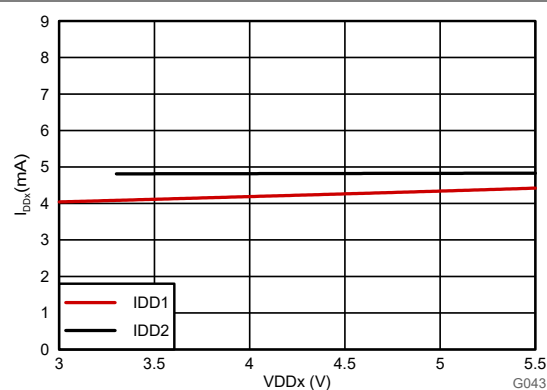


Figure 6-13. Supply Current vs Supply Voltage

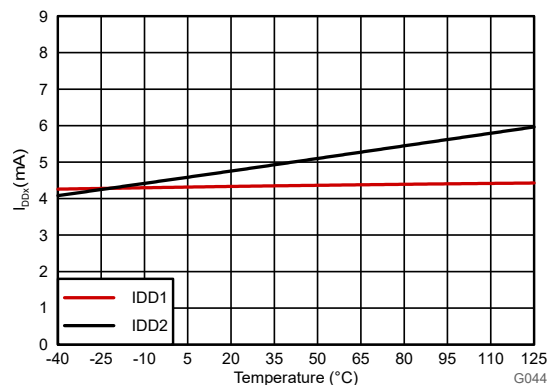


Figure 6-14. Supply Current vs Temperature

## 7 Detailed Description

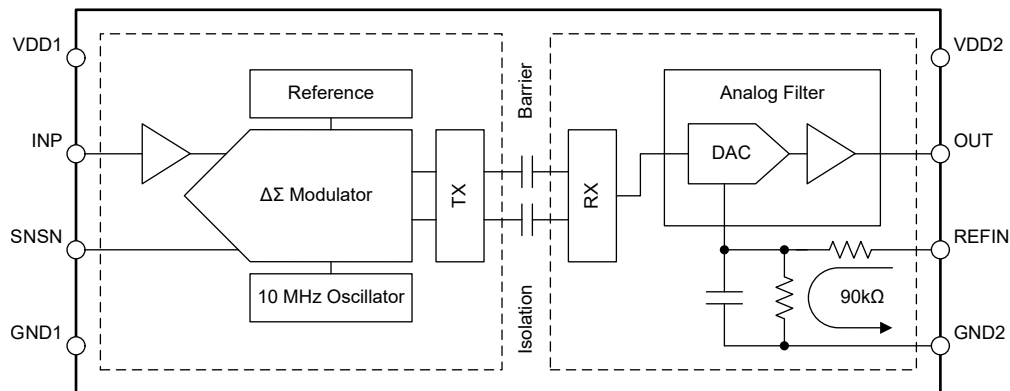
### 7.1 Overview

The AMC0x30R is a precision, galvanically isolated amplifier with a  $\pm 1\text{V}$ , high impedance input and single-ended, ratiometric output. The input stage of the device drives a second-order, delta-sigma ( $\Delta\Sigma$ ) modulator. The modulator converts the analog input signal into a digital bitstream that is transferred across the isolation barrier that separates the high-side from the low-side.

On the low-side, the received bitstream is processed by an analog filter that outputs a GND2-referenced, single-ended signal at the OUT pin. This single-ended output signal is proportional to the input signal. The full-scale output voltage of the isolated amplifier is equal to the voltage applied to the REFIN pin.

The  $\text{SiO}_2$ -based, capacitive isolation barrier supports a high level of magnetic field immunity, as described in the [ISO72x Digital Isolator Magnetic-Field Immunity application note](#). The digital modulation used in the AMC0x30R transmits data across the isolation barrier. This modulation, and the isolation barrier characteristics, result in high reliability and high common-mode transient immunity.

### 7.2 Functional Block Diagram



### 7.3 Feature Description

#### 7.3.1 Analog Input

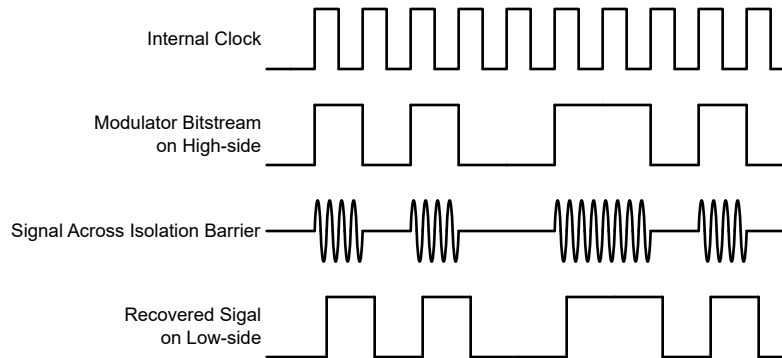
The high-impedance input buffer on the INP pin feeds a second-order, switched-capacitor, feed-forward  $\Delta\Sigma$  modulator. The modulator converts the analog signal into a bitstream that is transferred across the isolation barrier, as described in the [Isolation Channel Signal Transmission](#) section.

There are two restrictions on the analog input signal. First, if the input voltage exceeds the value specified in the [Absolute Maximum Ratings](#) table, the input current must be limited to 10mA. This limitation is caused by the device input electrostatic discharge (ESD) diodes turning on. Second, linearity and noise performance are specified only when the input voltage is within the linear full-scale range ( $V_{FSR}$ ).  $V_{FSR}$  is specified in the [Recommended Operating Conditions](#) table.

### 7.3.2 Isolation Channel Signal Transmission

As shown in [Figure 7-1](#), the AMC0x30R uses an on-off keying (OOK) modulation scheme to transmit the modulator output bitstream across the SiO<sub>2</sub>-based isolation barrier. The transmit driver (TX) is illustrated in the [Functional Block Diagram](#). TX transmits an internally generated, high-frequency carrier across the isolation barrier to represent a digital one. However, TX does not send a signal to represent a digital zero. The nominal frequency of the carrier used inside the AMC0x30R is 480MHz.

The receiver (RX) on the other side of the isolation barrier recovers and demodulates the signal and provides the input to the analog filter. The AMC0x30R transmission channel is optimized to achieve the highest level of common-mode transient immunity (CMTI) and the lowest level of radiated emissions. The high-frequency carrier and RX/TX buffer switching cause these emissions.



**Figure 7-1. OOK-Based Modulation Scheme**



### 7.3.3 Analog Output

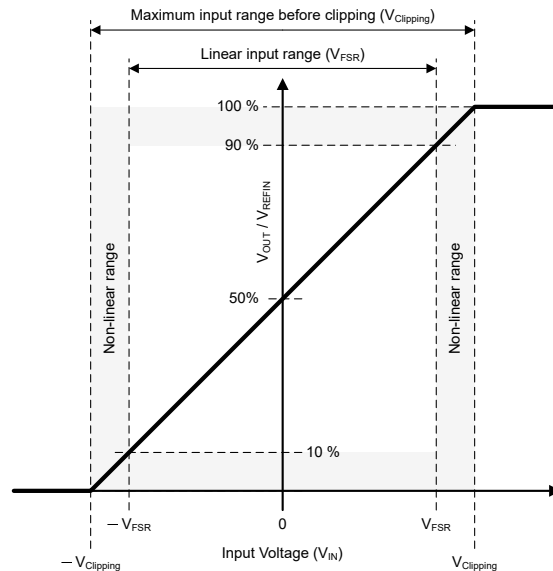
The AMC0x30R provides a single-ended analog output voltage proportional to the input voltage. The output is referred to GND2 and is galvanically isolated from the input of the device. The output is designed to connect directly to the input of an ADC.

The full-scale output voltage is set by the REFIN pin. For any input voltage within the specified linear input range, the device outputs a voltage equal to:

$$V_{OUT} = V_{IN} / V_{Clipping} \times V_{REFIN} / 2 + V_{REFIN} / 2 = (V_{INP} - V_{SNSN}) / V_{Clipping} \times V_{REFIN} / 2 + V_{REFIN} / 2 \quad (1)$$

Connect REFIN to the same reference voltage as a downstream ADC to match the ADC dynamic input voltage range. With a shared reference voltage, the ADC outputs a negative full-scale code when the negative clipping voltage is applied to the input of the AMC0x30R. The ADC outputs the mid-range code when 0V is applied to the input of the AMC0x30R. The ADC outputs a positive full-scale code when the positive clipping voltage is applied to the input of the AMC0x30R.

The device is linear within the specified linear full-scale range. Beyond the linear full-scale range, the output continues to follow the input, but with reduced linearity performance. The output clips when the input voltage reaches the clipping voltage. Figure 7-2 shows the input-to-output transfer characteristic.



**Figure 7-2. Input-to-Output Transfer Curve of the AMC0x30R**

### 7.3.4 Reference Input

The voltage applied to the REFIN pin determines the output voltage range of the OUT pin, as described in the [Analog Output](#) section.

The output buffer is linear in the range of  $250\text{mV} < V_{\text{OUT}} < (V_{\text{DD2}} - 250\text{mV})$ . Outside this range, the output continues to follow the input, but with reduced linearity performance. Eventually the output voltage clips, because the output buffer requires a minimum headroom to GND2 and VDD2. The input-referred linear range that the output buffer supports is a function of  $V_{\text{REFIN}}$  and is calculated as follows:

$$V_{\text{IN, MIN}} = (2 \times V_{\text{OUT, MIN}} / V_{\text{REFIN}} - 1) \times V_{\text{Clipping, MIN}} \quad (2)$$

$$V_{\text{IN, MAX}} = (2 \times V_{\text{OUT, MAX}} / V_{\text{REFIN}} - 1) \times V_{\text{Clipping, MAX}} \quad (3)$$

For a worst-case calculation, set  $V_{\text{OUT, MIN}} = 250\text{mV}$ ,  $V_{\text{OUT, MAX}} = V_{\text{DD2, MIN}} - 250\text{mV} = 2.75\text{V}$ , and  $V_{\text{REFIN}} \geq 2.7\text{V}$ . Under these worst-case assumptions, the output buffer supports an input voltage range from  $-1.04\text{V}$  to  $1.33\text{V}$ . This range is larger than the specified linear input voltage range of the device. Therefore, the reference voltage is not a limiting item.

## 7.4 Device Functional Modes

The AMC0x30R operates in one of the following states:

- Off-state: The low-side supply (VDD2) is below the  $VDD2_{UV}$  threshold. The device is not responsive. OUT is in Hi-Z state. Internally, OUT is clamped to VDD2 and GND2 by ESD protection diodes.
- Missing high-side supply: The low-side of the device (VDD2) is supplied and within recommended operating conditions. The high-side supply (VDD1) is below the  $VDD1_{UV}$  threshold. The OUT pin is driven to  $V_{REFIN} / 2$ .
- Analog input overrange (positive full-scale input): VDD1 and VDD2 are within recommended operating conditions but the analog input voltage  $V_{IN}$  is above the maximum clipping voltage  $V_{Clipping, MAX}$ . The device outputs  $V_{REFIN}$  at the OUT pin.
- Analog input underrange (negative full-scale input): VDD1 and VDD2 are within recommended operating conditions but the analog input voltage  $V_{IN}$  is below the minimum clipping voltage  $V_{Clipping, MIN}$ . The OUT pin is driven to GND2.
- Normal operation: VDD1, VDD2, and  $V_{IN}$  are within the recommended operating conditions. The device outputs a voltage that is proportional to the input voltage.

Table 7-1 lists the operating modes.

**Table 7-1. Device Operational Modes**

| OPERATING CONDITION      | VDD1                 | VDD2                 | $V_{IN}$                     | DEVICE RESPONSE   |
|--------------------------|----------------------|----------------------|------------------------------|---|
| Off                      | Don't care           | $VDD2 < VDD2_{UV}$   | Don't care                   | OUT is in Hi-Z state. Internally, OUT is clamped to VDD2 and GND2 by ESD protection diodes. |
| Missing high-side supply | $VDD1 < VDD1_{UV}$   | Valid <sup>(1)</sup> | Don't care                   | The OUT pin is driven to $V_{REFIN} / 2$ .  |
| Input overrange          | Valid <sup>(1)</sup> | Valid <sup>(1)</sup> | $V_{IN} > V_{Clipping, MAX}$ | The device outputs $V_{REFIN}$ at the OUT pin.  |
| Input underrange         | Valid <sup>(1)</sup> | Valid <sup>(1)</sup> | $V_{IN} < V_{Clipping, MIN}$ | The OUT pin is driven to GND2.  |
| Normal operation         | Valid <sup>(1)</sup> | Valid <sup>(1)</sup> | Valid <sup>(1)</sup>         | The device outputs a voltage that is proportional to the input voltage.                     |

(1) *Valid* denotes operation within the recommended operating conditions.

## 8 Application and Implementation

### Note

Information in the following applications sections is not part of the TI component specification, and TI does not warrant its accuracy or completeness. TI's customers are responsible for determining suitability of components for their purposes, as well as validating and testing their design implementation to confirm system functionality.

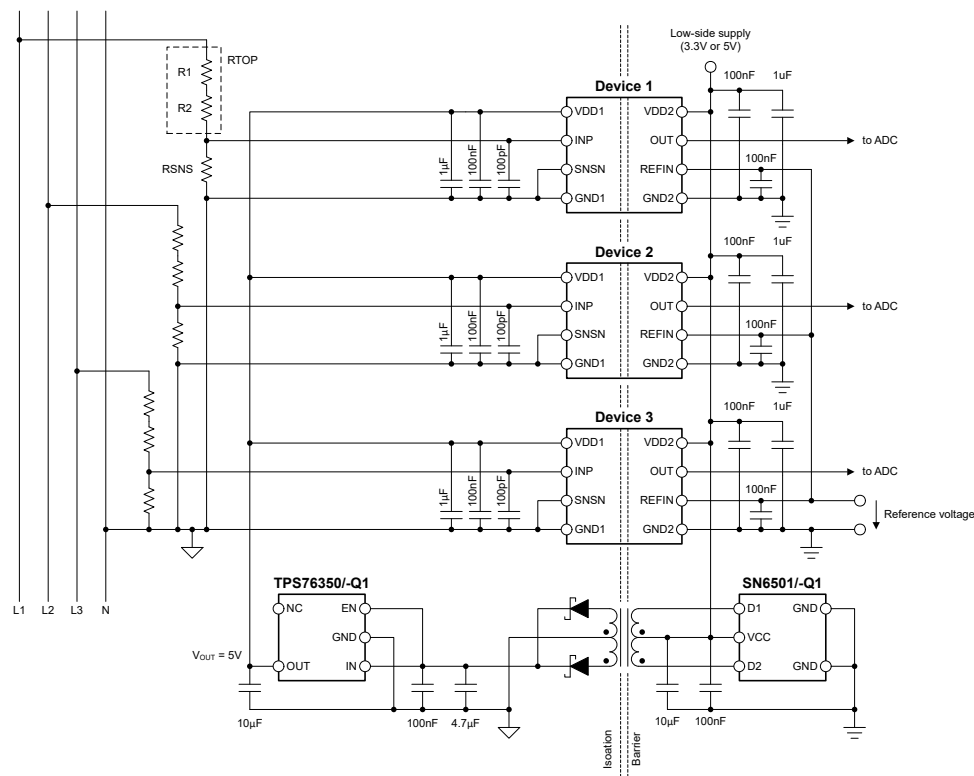
## 8.1 Application Information

AC-line powered power supplies are divided into two or more voltage domains that are galvanically isolated from each other. For example, the high-voltage domain includes the AC grid, DC link, and the power stage for power-factor correction (PFC). The low-voltage domain includes the system controller and human interface. The PFC controller measures the value of the AC line voltage while remaining galvanically isolated from the AC mains for safety reasons. With the high-impedance input and galvanically isolated output, the AMC0x30R enables this measurement.

## 8.2 Typical Application

illustrates a simplified schematic of a circuit that senses the line voltages of a three-phase AC system. All three voltages are measured against neutral. This configuration allows the three AMC0x30R devices to share a common isolated power supply on the input side.

The AC line voltage on phase L1 is divided down to a  $\pm 1\text{V}$  level across the bottom resistor (RSNS) of a high-impedance resistive divider. The voltage across RSNS is sensed by the AMC0x30R (*device 1*). On the opposite side of the isolation barrier *device 1* outputs a voltage proportional to the L1-to-neutral voltage. In the same way, *device 2* and *device 3* sense the L2 and L3 line voltages, respectively. A common VDD1 supply is generated from the low-voltage side by an isolated DC/DC converter circuit. A low-cost design is based on the push-pull driver [SN6501](#) and a transformer that supports the desired isolation voltage ratings.



### Figure 8-1. Using the AMC0x30R in a Typical Application

## 8.2.1 Design Requirements

Table 8-1 lists the parameters for this typical application.

**Table 8-1. Design Requirements**

| PARAMETER   | VALUE                          |
|---|--------------------------------|
| System input voltage (phase to neutral)                             | 230V <sub>RMS</sub> ±10%, 50Hz |
| High-side supply voltage  | 5V                             |
| Low-side supply voltage   | 3.3V                           |
| Maximum resistor operating voltage                                  | 125V                           |
| Voltage drop across the sense resistor (RSNS) for a linear response | ±1V (maximum)                  |
| Current through the resistive divider, I <sub>CROSS</sub>           | 200μA (maximum)                |

## 8.2.2 Detailed Design Procedure

The peak input voltage is  $230V \times \sqrt{2} \times 1.1 = 360V$ . The 200μA maximum cross-current requirement determines that the total impedance of the resistive divider is 1.8MΩ. The impedance of the resistive divider is dominated by the top resistors, shown exemplarily as R1 and R2 in Figure 1-1. The maximum allowed voltage drop per unit resistor is specified as 125V. Therefore, the minimum number of unit resistors in the top portion of the resistive divider is  $360V / 125V \approx 3$ . The calculated unit value is  $1.8M\Omega / 3 = 600k\Omega$  and the next closest value from the E96 series is 604kΩ.

Size RSNS such that the voltage drop at the maximum input voltage (360V) equals  $V_{FSR}$ .  $V_{FSR}$  is the linear full-scale voltage and specified as ±1V. RSNS is calculated as  $RSNS = V_{FSR} / (V_{Peak} - V_{FSR}) \times R_{TOP}$ .  $R_{TOP}$  is the total value of the top resistor string ( $3 \times 604k\Omega = 1.812M\Omega$ ). RSNS results in a value of 5.05kΩ. The next closest value from the E96 series is 4.99kΩ.

Table 8-2 summarizes the design of the resistive divider.

**Table 8-2. Resistor Value Examples**

| PARAMETER   | VALUE   |
|---|---------|
| Unit resistor value, $R_{TOP}$                                  | 604kΩ   |
| Number of unit resistors in $R_{TOP}$                           | 3       |
| Sense resistor value, RSNS                                      | 4.99kΩ  |
| Total resistance value ( $R_{TOP} + RSNS$ )                     | 1.817MΩ |
| Resulting current through resistive divider, I <sub>CROSS</sub> | 198.1μA |
| Resulting full-scale voltage drop across sense resistor RSNS    | 989mV   |
| Peak power dissipated in $R_{TOP}$ unit resistor                | 23.7mW  |
| Total peak power dissipated in resistive divider                | 71.3mW  |

### 8.2.2.1 Input Filter Design

Place an RC filter in front of the device to improve signal-to-noise performance of the signal path. Input noise with a frequency close to the  $\Delta\Sigma$  modulator sampling frequency (typically 10MHz) is folded back into the low-frequency range by the modulator. The purpose of the RC filter is to attenuate high-frequency noise below the desired noise level of the measurement. In practice, a cutoff frequency that is two orders of magnitude lower than the modulator frequency yields good results.

Most voltage-sensing applications use high-impedance resistive dividers to scale down the input voltage. In this case, a single capacitor, as shown in Figure 8-2, is sufficient to filter the input signal. For  $(R1 + R2) \gg RSNS$ , the cutoff frequency of the input filter is  $1 / (2 \times \pi \times RSNS \times C5)$ . For example,  $RSNS = 10k\Omega$  and  $C5 = 100pF$  results in a cutoff frequency of 160kHz.

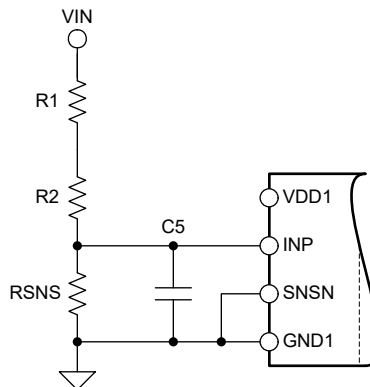


Figure 8-2. Input Filter

### 8.2.2.2 Connecting the REFIN Pin

The reference input has an internal, 90k $\Omega$  impedance connected to GND2. Consider this impedance when driving the REFIN pin from a high-impedance source. Connect a 100nF capacitor from REFIN to GND2 to filter out high-frequency noise at the reference input. Figure 8-3 shows different options for connecting the REFIN pin.

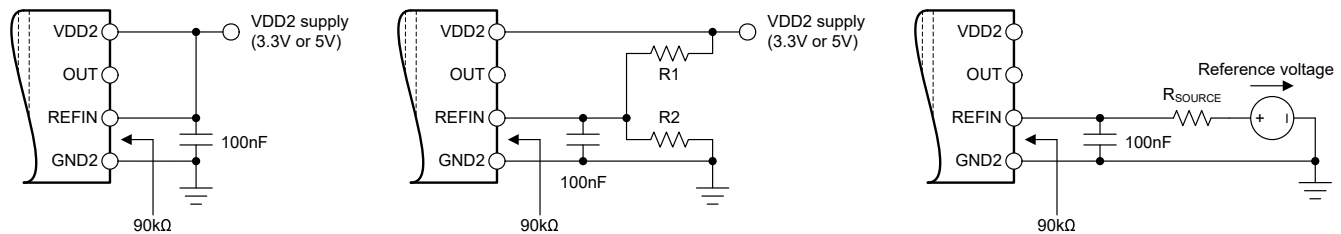
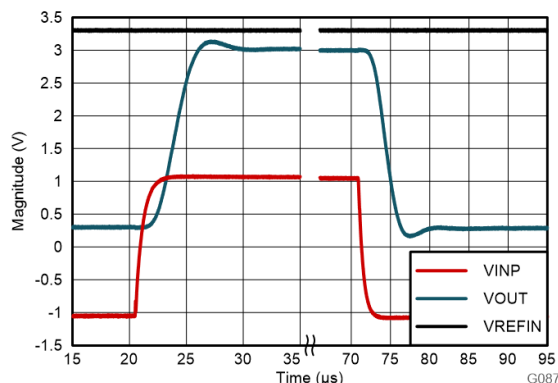


Figure 8-3. Connecting the REFIN Pin

In the first example, REFIN is shorted to VDD2. In the second example,  $V_{REFIN}$  is derived from VDD2 through a resistive divider consisting of R1 and the internal 90k $\Omega$  input impedance. In the third example, an external voltage source drives the reference input pin.

### 8.2.3 Application Curve

Figure 8-4 shows the typical full-scale step response of the AMC0x30R.



**Figure 8-4. Step Response of the AMC0x30R**

### 8.3 Best Design Practices

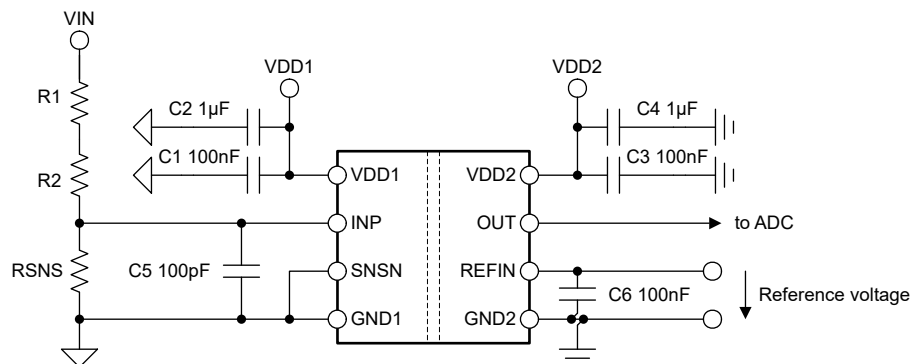
Do not leave the analog input (INP pin) of the AMC0x30R unconnected (floating) when the device is powered up. If the device input is left floating, the device output is not valid.

Do not connect protection diodes to the input (INP pin) of the AMC0x30R. Diode leakage current potentially introduces significant measurement error especially at high temperatures. The input pin is protected against high voltages by the ESD protection circuit and the high impedance of the external resistive divider.

## 8.4 Power Supply Recommendations

In a typical application, the high-side power supply (VDD1) for the AMC0x30R is generated from the low-side supply (VDD2) by an isolated DC/DC converter. A low-cost option is based on the push-pull driver [SN6501](#) and a transformer that supports the desired isolation voltage ratings.

The AMC0x30R does not require any specific power-up sequencing. The high-side power supply (VDD1) is decoupled with a low-ESR, 100nF capacitor (C1) parallel to a low-ESR, 1μF capacitor (C2). The low-side power supply (VDD2) is equally decoupled with a low-ESR, 100nF capacitor (C3) parallel to a low-ESR, 1μF capacitor (C4). Place all four capacitors (C1, C2, C3, and C4) as close to the device as possible. [Figure 8-5](#) shows a decoupling diagram for the AMC0x30R.



**Figure 8-5. Decoupling of the AMC0x30R**

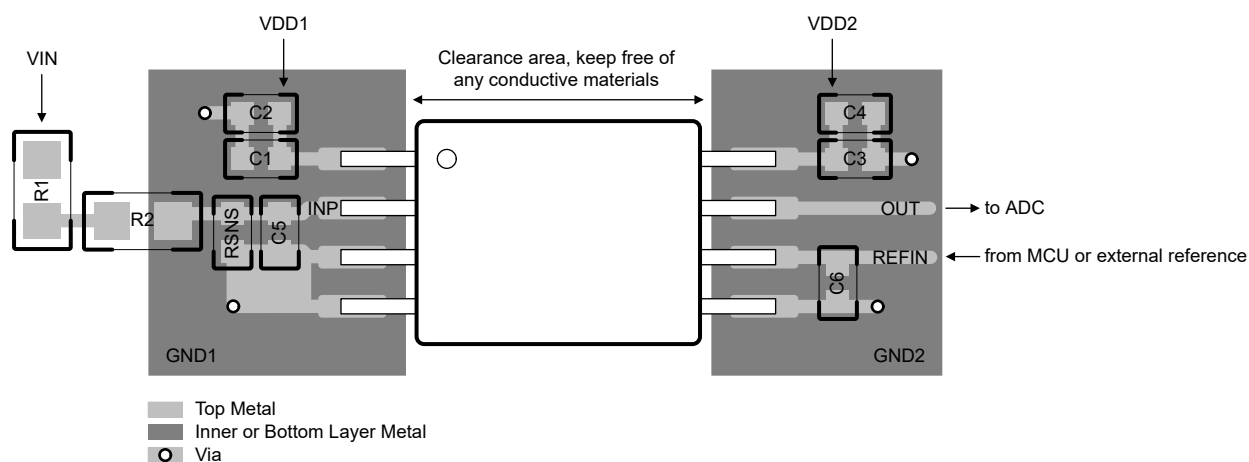
Verify capacitors provide adequate *effective* capacitance under the applicable DC bias conditions experienced in the application. Multilayer ceramic capacitors (MLCC) typically exhibit only a fraction of the nominal capacitance under real-world conditions. Consider this factor when selecting these capacitors. This issue is especially acute in low-profile capacitors, where the dielectric field strength is higher than in taller components. Reputable capacitor manufacturers provide capacitance versus DC bias curves that greatly simplify component selection.

## 8.5 Layout

### 8.5.1 Layout Guidelines

The [Layout Example](#) section details a layout recommendation with the critical placement of the decoupling capacitors (as close as possible to the AMC0x30R supply pins). This example also depicts the placement of other components required by the device.

### 8.5.2 Layout Example



**Figure 8-6. Recommended Layout of the AMC0x30R**



## 9 Device and Documentation Support

### 9.1 Documentation Support

#### 9.1.1 Related Documentation

For related documentation, see the following:

- Texas Instruments, [Isolation Glossary application note](#)
- Texas Instruments, [Semiconductor and IC Package Thermal Metrics application note](#)
- Texas Instruments, [ISO72x Digital Isolator Magnetic-Field Immunity application note](#)
- Texas Instrument, [SN6501 Transformer Driver for Isolated Power Supplies data sheet](#)
- Texas Instruments, [Isolated Amplifier Voltage Sensing Excel Calculator design tool](#)

### 9.2 Receiving Notification of Documentation Updates

To receive notification of documentation updates, navigate to the device product folder on [ti.com](https://www.ti.com). Click on *Notifications* to register and receive a weekly digest of any product information that has changed. For change details, review the revision history included in any revised document.

### 9.3 Support Resources

**TI E2E™ support forums** are an engineer's go-to source for fast, verified answers and design help — straight from the experts. Search existing answers or ask your own question to get the quick design help you need.

Linked content is provided "AS IS" by the respective contributors. They do not constitute TI specifications and do not necessarily reflect TI's views; see TI's [Terms of Use](#).

### 9.4 Trademarks

TI E2E™ is a trademark of Texas Instruments.

All trademarks are the property of their respective owners.

### 9.5 Electrostatic Discharge Caution



This integrated circuit can be damaged by ESD. Texas Instruments recommends that all integrated circuits be handled with appropriate precautions. Failure to observe proper handling and installation procedures can cause damage.

ESD damage can range from subtle performance degradation to complete device failure. Precision integrated circuits may be more susceptible to damage because very small parametric changes could cause the device not to meet its published specifications.

### 9.6 Glossary

[TI Glossary](#) This glossary lists and explains terms, acronyms, and definitions.

## 10 Revision History

NOTE: Page numbers for previous revisions may differ from page numbers in the current version.

| DATE      | REVISION | NOTES           |
|-----------|----------|-----------------|
| July 2025 | *        | Initial Release |

## 11 Mechanical, Packaging, and Orderable Information

The following pages include mechanical, packaging, and orderable information. This information is the most current data available for the designated devices. This data is subject to change without notice and revision of this document. For browser-based versions of this data sheet, refer to the left-hand navigation.

## PACKAGING INFORMATION

| Orderable part number | Status<br>(1) | Material type<br>(2) | Package   Pins | Package qty   Carrier | RoHS<br>(3) | Lead finish/<br>Ball material<br>(4) | MSL rating/<br>Peak reflow<br>(5) | Op temp (°C) | Part marking<br>(6) |
|-----------------------|---------------|----------------------|----------------|-----------------------|-------------|--------------------------------------|-----------------------------------|--------------|---------------------|
| AMC0330RDWVR          | Active        | Production           | SOIC (DWV)   8 | 1000   LARGE T&R      | Yes         | NIPDAU                               | Level-2-260C-1 YEAR               | -40 to 125   | C0330R              |

(1) **Status:** For more details on status, see our [product life cycle](#).

(2) **Material type:** When designated, preproduction parts are prototypes/experimental devices, and are not yet approved or released for full production. Testing and final process, including without limitation quality assurance, reliability performance testing, and/or process qualification, may not yet be complete, and this item is subject to further changes or possible discontinuation. If available for ordering, purchases will be subject to an additional waiver at checkout, and are intended for early internal evaluation purposes only. These items are sold without warranties of any kind.

(3) **RoHS values:** Yes, No, RoHS Exempt. See the [TI RoHS Statement](#) for additional information and value definition.

(4) **Lead finish/Ball material:** Parts may have multiple material finish options. Finish options are separated by a vertical ruled line. Lead finish/Ball material values may wrap to two lines if the finish value exceeds the maximum column width.

(5) **MSL rating/Peak reflow:** The moisture sensitivity level ratings and peak solder (reflow) temperatures. In the event that a part has multiple moisture sensitivity ratings, only the lowest level per JEDEC standards is shown. Refer to the shipping label for the actual reflow temperature that will be used to mount the part to the printed circuit board.

(6) **Part marking:** There may be an additional marking, which relates to the logo, the lot trace code information, or the environmental category of the part.

Multiple part markings will be inside parentheses. Only one part marking contained in parentheses and separated by a "~" will appear on a part. If a line is indented then it is a continuation of the previous line and the two combined represent the entire part marking for that device.

**Important Information and Disclaimer:**The information provided on this page represents TI's knowledge and belief as of the date that it is provided. TI bases its knowledge and belief on information provided by third parties, and makes no representation or warranty as to the accuracy of such information. Efforts are underway to better integrate information from third parties. TI has taken and continues to take reasonable steps to provide representative and accurate information but may not have conducted destructive testing or chemical analysis on incoming materials and chemicals. TI and TI suppliers consider certain information to be proprietary, and thus CAS numbers and other limited information may not be available for release.

In no event shall TI's liability arising out of such information exceed the total purchase price of the TI part(s) at issue in this document sold by TI to Customer on an annual basis.

### OTHER QUALIFIED VERSIONS OF AMC0330R :

- Automotive : [AMC0330R-Q1](#)

NOTE: Qualified Version Definitions:

- Automotive - Q100 devices qualified for high-reliability automotive applications targeting zero defects

## TAPE AND REEL INFORMATION



\*All dimensions are nominal

| Device       | Package Type | Package Drawing | Pins | SPQ  | Reel Diameter (mm) | Reel Width W1 (mm) | A0 (mm) | B0 (mm) | K0 (mm) | P1 (mm) | W (mm) | Pin1 Quadrant |
|--------------|--------------|-----------------|------|------|--------------------|--------------------|---------|---------|---------|---------|--------|---------------|
| AMC0330RDWVR | SOIC         | DWV             | 8    | 1000 | 330.0              | 16.4               | 12.15   | 6.2     | 3.05    | 16.0    | 16.0   | Q1            |

## TAPE AND REEL BOX DIMENSIONS



\*All dimensions are nominal

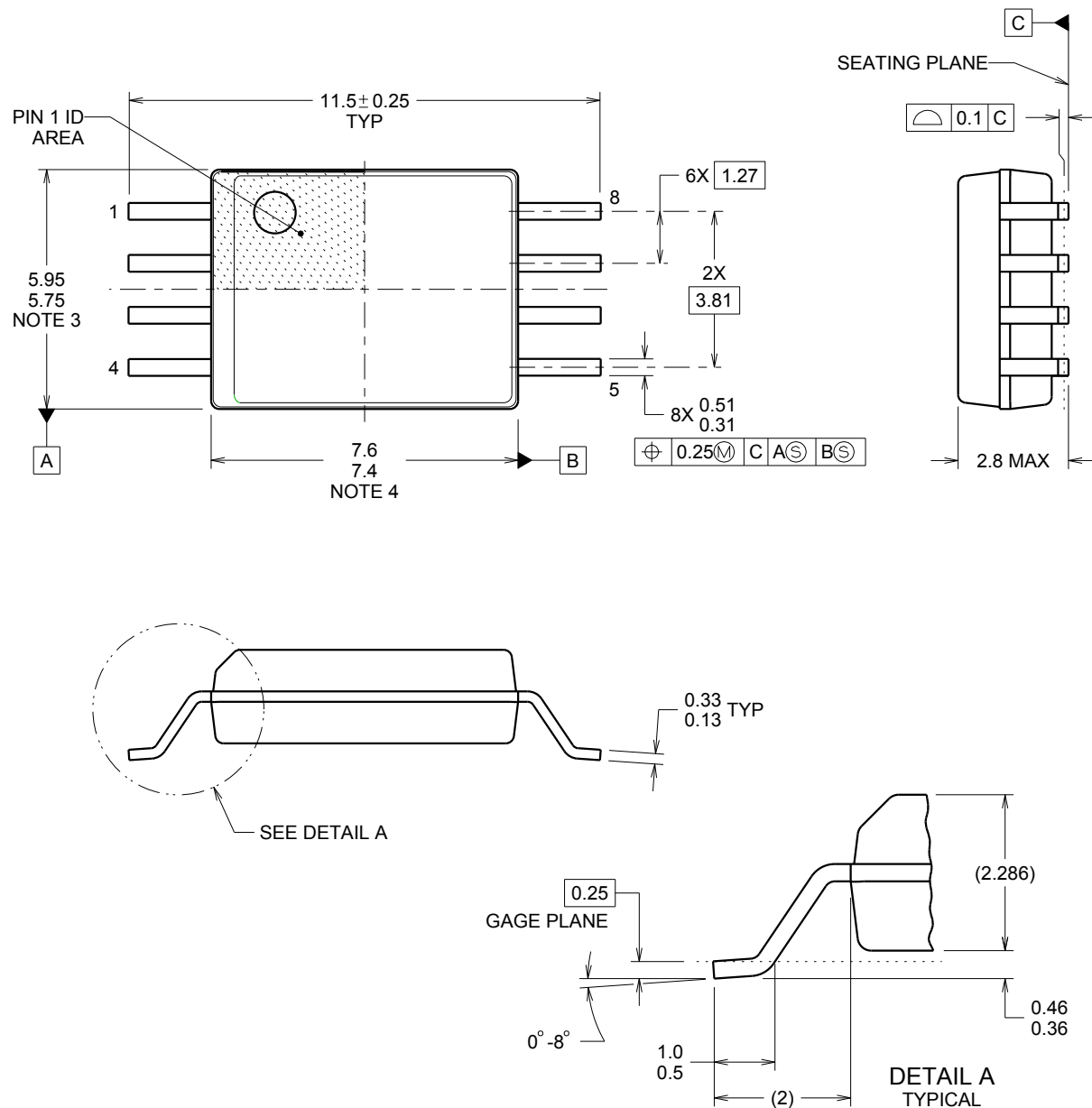
| Device       | Package Type | Package Drawing | Pins | SPQ  | Length (mm) | Width (mm) | Height (mm) |
|--------------|--------------|-----------------|------|------|-------------|------------|-------------|
| AMC0330RDWVR | SOIC         | DWV             | 8    | 1000 | 353.0       | 353.0      | 32.0        |

DWV0008A



SOIC - 2.8 mm max height

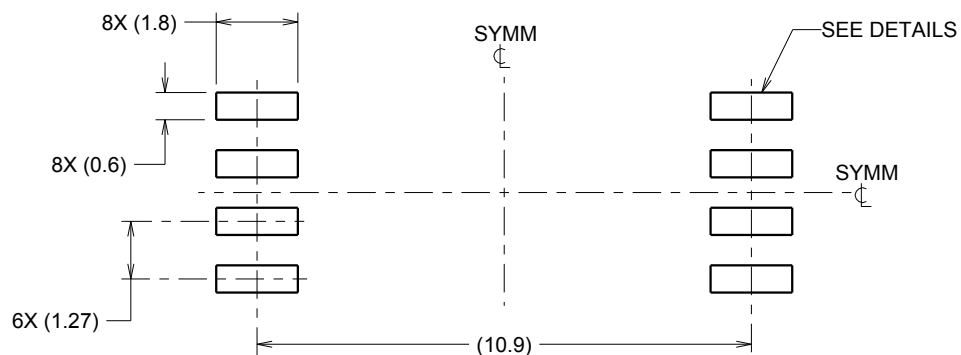
SOIC



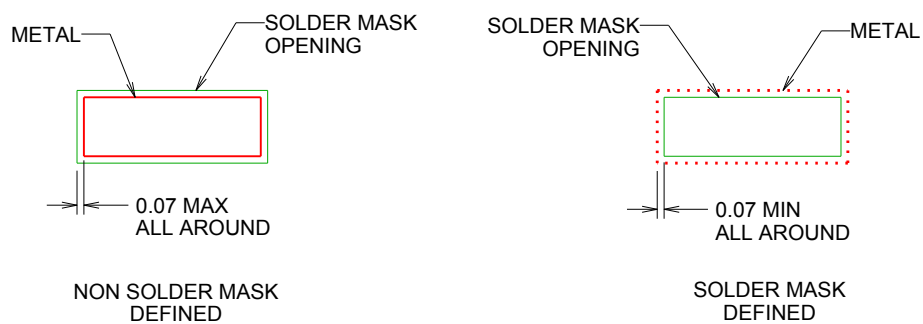
4218796/A 09/2013

## NOTES:

1. All linear dimensions are in millimeters. Dimensions in parenthesis are for reference only. Dimensioning and tolerancing per ASME Y14.5M.
2. This drawing is subject to change without notice.
3. This dimension does not include mold flash, protrusions, or gate burrs. Mold flash, protrusions, or gate burrs shall not exceed 0.15 mm, per side.
4. This dimension does not include interlead flash. Interlead flash shall not exceed 0.25 mm, per side.



**LAND PATTERN EXAMPLE**  
9.1 mm NOMINAL CLEARANCE/CREEPAGE  
SCALE:6X

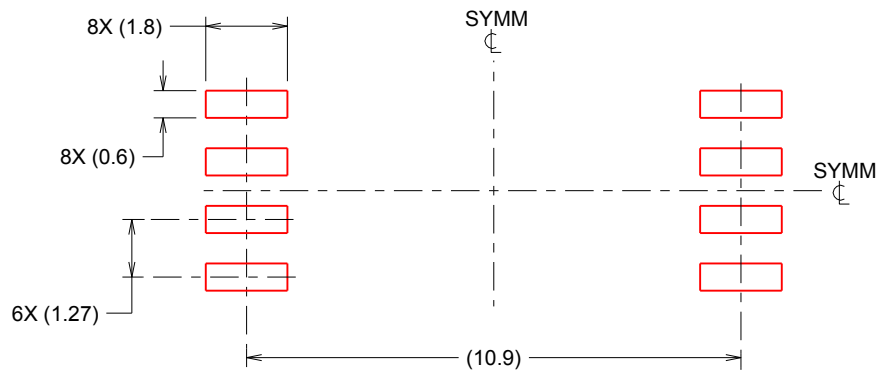


**SOLDER MASK DETAILS**

4218796/A 09/2013

NOTES: (continued)

5. Publication IPC-7351 may have alternate designs.
6. Solder mask tolerances between and around signal pads can vary based on board fabrication site.



SOLDER PASTE EXAMPLE  
 BASED ON 0.125 mm THICK STENCIL  
 SCALE:6X

4218796/A 09/2013

NOTES: (continued)

7. Laser cutting apertures with trapezoidal walls and rounded corners may offer better paste release. IPC-7525 may have alternate design recommendations.
8. Board assembly site may have different recommendations for stencil design.



**D0008A****PACKAGE OUTLINE****SOIC - 1.75 mm max height**

SMALL OUTLINE INTEGRATED CIRCUIT



4214825/C 02/2019

**NOTES:**

1. Linear dimensions are in inches [millimeters]. Dimensions in parenthesis are for reference only. Controlling dimensions are in inches. Dimensioning and tolerancing per ASME Y14.5M.
2. This drawing is subject to change without notice.
3. This dimension does not include mold flash, protrusions, or gate burrs. Mold flash, protrusions, or gate burrs shall not exceed .006 [0.15] per side.
4. This dimension does not include interlead flash.
5. Reference JEDEC registration MS-012, variation AA.

**D0008A**

## SOIC - 1.75 mm max height

## SMALL OUTLINE INTEGRATED CIRCUIT



LAND PATTERN EXAMPLE  
EXPOSED METAL SHOWN  
SCALE:8X



## SOLDER MASK DETAILS

4214825/C 02/2019

NOTES: (continued)

6. Publication IPC-7351 may have alternate designs.

7. Solder mask tolerances between and around signal pads can vary based on board fabrication site.

## EXAMPLE STENCIL DESIGN

D0008A

SOIC - 1.75 mm max height

SMALL OUTLINE INTEGRATED CIRCUIT



SOLDER PASTE EXAMPLE  
BASED ON .005 INCH [0.125 MM] THICK STENCIL  
SCALE:8X

4214825/C 02/2019

NOTES: (continued)

8. Laser cutting apertures with trapezoidal walls and rounded corners may offer better paste release. IPC-7525 may have alternate design recommendations.
9. Board assembly site may have different recommendations for stencil design.

## IMPORTANT NOTICE AND DISCLAIMER

TI PROVIDES TECHNICAL AND RELIABILITY DATA (INCLUDING DATASHEETS), DESIGN RESOURCES (INCLUDING REFERENCE DESIGNS), APPLICATION OR OTHER DESIGN ADVICE, WEB TOOLS, SAFETY INFORMATION, AND OTHER RESOURCES "AS IS" AND WITH ALL FAULTS, AND DISCLAIMS ALL WARRANTIES, EXPRESS AND IMPLIED, INCLUDING WITHOUT LIMITATION ANY IMPLIED WARRANTIES OF MERCHANTABILITY, FITNESS FOR A PARTICULAR PURPOSE OR NON-INFRINGEMENT OF THIRD PARTY INTELLECTUAL PROPERTY RIGHTS.

These resources are intended for skilled developers designing with TI products. You are solely responsible for (1) selecting the appropriate TI products for your application, (2) designing, validating and testing your application, and (3) ensuring your application meets applicable standards, and any other safety, security, regulatory or other requirements.

These resources are subject to change without notice. TI grants you permission to use these resources only for development of an application that uses the TI products described in the resource. Other reproduction and display of these resources is prohibited. No license is granted to any other TI intellectual property right or to any third party intellectual property right. TI disclaims responsibility for, and you fully indemnify TI and its representatives against any claims, damages, costs, losses, and liabilities arising out of your use of these resources.

TI's products are provided subject to [TI's Terms of Sale](#), [TI's General Quality Guidelines](#), or other applicable terms available either on [ti.com](#) or provided in conjunction with such TI products. TI's provision of these resources does not expand or otherwise alter TI's applicable warranties or warranty disclaimers for TI products. Unless TI explicitly designates a product as custom or customer-specified, TI products are standard, catalog, general purpose devices.

TI objects to and rejects any additional or different terms you may propose.

Copyright © 2026, Texas Instruments Incorporated

Last updated 10/2025