

CD326x Audio Interface Transmitter Evaluation Module User's Guide



Description

The CD326xEVM-003 helps designers evaluate the operation and performance of the CD3268 and CD3269 audio interface transmitters. The CD326x is a wired headset signaling transmitter with low quiescent current and compatibility with specially enabled audio interfaces. The EVM includes a built-in switch resistor network to allow for simulated button presses as inputs into the device.

Get Started

1. Order the CD326xEVM
2. Read the CD326xEVM user's guide
3. Refer to the [Audio Interface Transmitter for Specially Enabled Headsets](#) or [E2E](#) for questions and support

Features

- Compatible with specially enabled audio interfaces (iPhone® and iPad®)
- Low quiescent current
 - Button mode (microphone not in use): 3μA
 - Tone mode (microphone in use): 110μA
- Miniature DSBGA package
- ESD performance
 - Human body model: 2000V
 - Charged device model: 500V

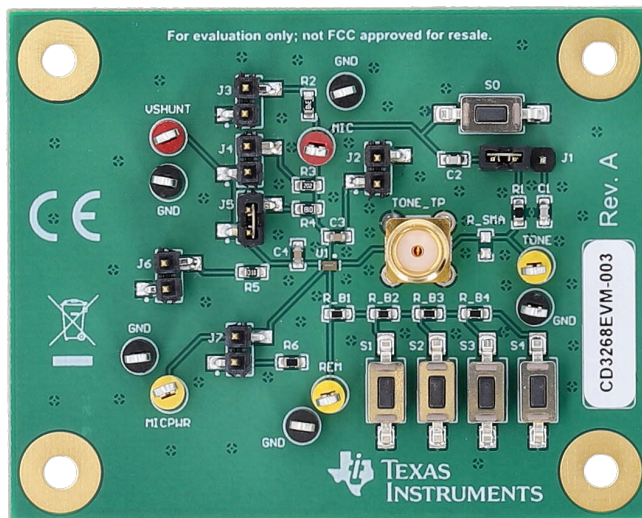


Figure 1-1. CD3268EVM-003

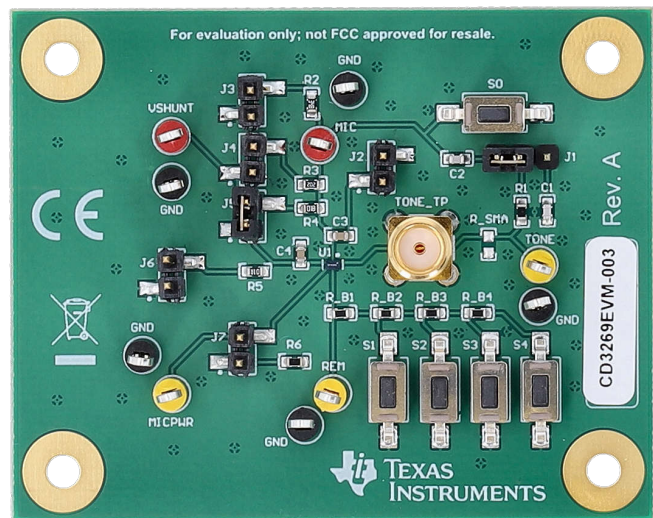


Figure 1-2. CD3269EVM-003

1 Evaluation Module Overview

1.1 Introduction

This user's guide describes the operation of the CD326xEVM. The device is a stand-alone EVM. The device provides the capability to validate all of the specs in the CD326x data sheet while also providing common connections found in a typical application of the part.

1.2 Kit Contents

- CD326xEVM
- EVM Disclaimer Read Me

1.3 Specification

The CD326xEVM is intended to provide a basic, functional evaluation of the device. Power is supplied to the device on the MIC pin. The voltage supplied to the pin selects the mode of the device. Voltage above 2.35V (typical) configure tone mode, and voltages below this threshold configuring button mode (see the [CD326x data sheet](#) for more details on modes and mode thresholds).

The MIC pin is externally coupled to the VSHUNT pin through either **J4** or **J5**. When operating in tone mode, the VSHUNT pin provides power to the MICPWR pin which connects to an external microphone. The CD326xEVM does not include an onboard microphone; however, the device does include a test point to connect the MICPWR output to a microphone or a microphone control circuit.

The CD326xEVM provides an onboard switch resistor network connected to the REM pin. Use this switch resistor network to simulate button presses, or use an external switch resistor network. The CD326x detects up to four unique buttons. See the [CD326x data sheet](#) for the recommended resistance values corresponding to each button.

1.4 Device Information

The CD3268EVM has the CD3268A0YZP installed, and the CD3269EVM has the CD3269A0YZP installed. Besides the main IC, the rest of the device is identical for both versions.

The CD326x is a wired headset signaling transmitter designed to detect and transmit button inputs to a specially enabled audio interface. The transmitter has two modes of operation: button mode and tone mode. During button mode operation, the transmitter operates as a pass-through for a switch resistor network. During tone mode operation, the CD326x generates an AC tone on the TONE pin that is coupled onto the MIC pin. The MIC pin is connected to a pin (typically called MICBIAS) on the specially enabled audio interface. The MICBIAS pin provides power to the transmitter and also detects button inputs sent from the transmitter. For the CD326xEVM, **J3** provides a connector that acts as a typical MICBIAS connection.

While intended to work in conjunction with a specially enabled audio interface, the CD326x does not require a specially enabled audio interface to function as described above.

2 Hardware

2.1 Power Requirements

PARAMETER		TEST CONDITION	MIN	TYP	MAX	UNIT
V _{MICBIAS}	Input voltage	Button mode. Bias voltage (MIC pin is connected to MICBIAS through a 1%, 2.21kΩ resistor). MIC pin voltages in this range enable button mode	1.8		2.1	V
		Tone mode. Bias voltage (MIC pin is connected to MICBIAS through a 1%, 2.21kΩ resistor). MIC pin voltages in this range enable Tone mode	2.56		2.84	V
MICPWR	Output voltage	Tone mode only	1.51	1.56	1.61	V

2.2 Setup

Typical Application Setup

1. Insert jumpers **J1 (Pins 2-3)** and **J5**
2. Connect supply to **J3 (Pin 2)**
 - Tone Mode: Apply 2.70V
 - Button Mode: Apply 2.00V

See [CD326x data sheet](#) for parameter testing configurations.

2.3 Jumper Information

JUMPER NAME (CONNECTED PINS)	DESCRIPTION
J1 (Pins 1 and 2)	Provides a load on TONE pin. Primarily used when measuring the active currents into the MIC and VSHUNT pins.
J1 (Pins 2 and 3)	Connects TONE pin to MIC pin. Standard connection for typical application.
J2	MIC Pin Decoupling Capacitor.
J3	MICBIAS Input. Apply MICBIAS on Pin 2 while Pin 1 provides a source to ground. MICBIAS is typically the input power for the circuit; alternatively, apply power directly on the MIC pin.
J4	2kΩ R _{VSHUNT} . Connecting this jumper connects a 2kΩ resistor from the MIC pin to the VSHUNT pin. Disconnect this jumper when the J5 jumper is connected.
J5	1kΩ R _{VSHUNT} . Connecting this jumper connects a 1kΩ resistor from the MIC pin to the VSHUNT pin. Disconnect this jumper when the J4 jumper is connected.
J6	VSHUNT Pin Test Point Resistor. Used for measuring the shunt regulator output impedance. When taking this measurement, use Pin 2 to connect a function generator while Pin 1 provides a source to ground.
J7	MICPWR Pin Test Point Resistor. Connecting this jumper applies an example load to the MICPWR pin that simulates a microphone being connected.

2.4 Push Buttons

PUSH BUTTON NAME	DESCRIPTION
S0	Reset Button. Grounds the MIC pin which causes the part to power cycle.

PUSH BUTTON NAME	DESCRIPTION
S1	Button 1. Applies 6.81kΩ to the REM pin when pressed which causes the TONE pin to generate a Button 1 frequency when in tone mode or causes a voltage drop on the MIC pin while in button mode.
S2	Button 2. Applies 9.42kΩ to the REM pin when pressed which causes the TONE pin to generate a Button 2 frequency when in tone mode or causes a voltage drop on the MIC pin while in button mode.
S3	Button 3. Applies 12.99kΩ to the REM pin when pressed which causes the TONE pin to generate a Button 3 frequency when in tone mode or causes a voltage drop on the MIC pin while in button mode.
S4	Button 4. Applies 19.80kΩ to the REM pin when pressed which causes the TONE pin to generate a Button 4 frequency when in tone mode or causes a voltage drop on the MIC pin while in button mode.

2.5 Test Points

TEST POINT NAME	DESCRIPTION
MIC	Input supply pin that supplies power to the transmitter.
VSHUNT	Input supply pin that connects to a shunt regulator and provides power for the MICPWR pin.
TONE	Output pin that generates tones when in tone mode.
MICPWR	Output pin that supplies a bias directly to a microphone or indirectly through an external circuit.
REM	Input pin that detects changes from an external switch resistor network.

2.6 Best Practices

When supplying power to the CD326xEVM, it is best to use the [MICBIAS input \(J3, pin 2\)](#). When the voltage on the MIC pin is detected to go above the tone mode threshold voltage (typically 2.35V), the part switches from button mode to tone mode. The CD326x stays in tone mode until the transmitter is power cycled either manually or through the use of the [S0 button](#). If the transmitter transitions to tone mode when supplying voltages below the tone mode threshold voltage, there is a possibility that the overshoot voltage of the supply temporarily pushes the MIC pin voltage above the threshold. Decreasing the ramp of the supply or reducing the supply voltage are both options to reduce the overshoot voltage leading to this functionality.

3 Hardware Design Files

3.1 Schematics

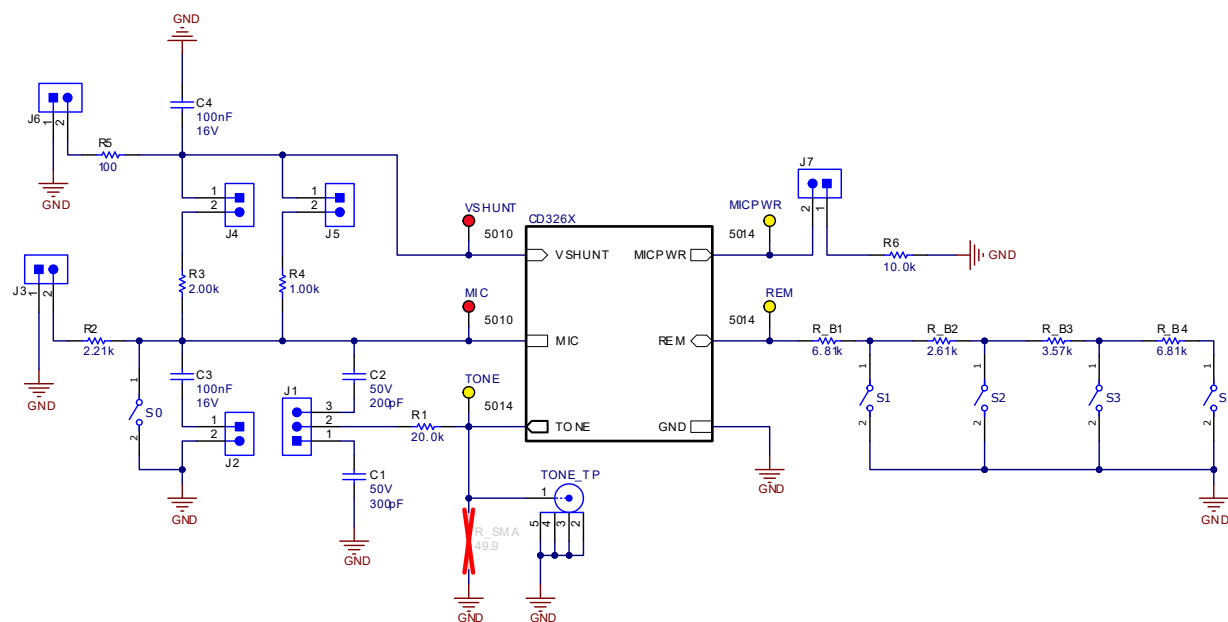


Figure 3-1.

3.2 PCB Layouts

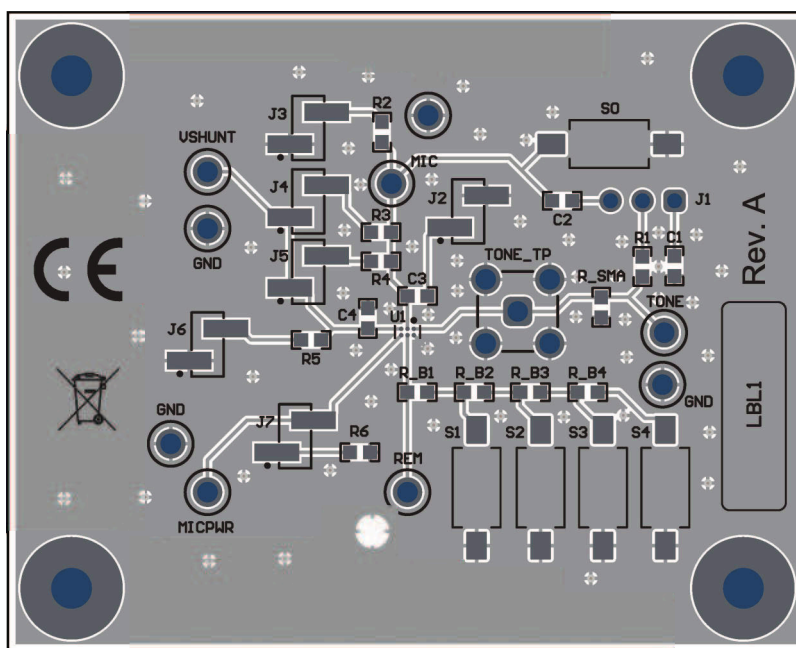


Figure 3-2. Top Composite

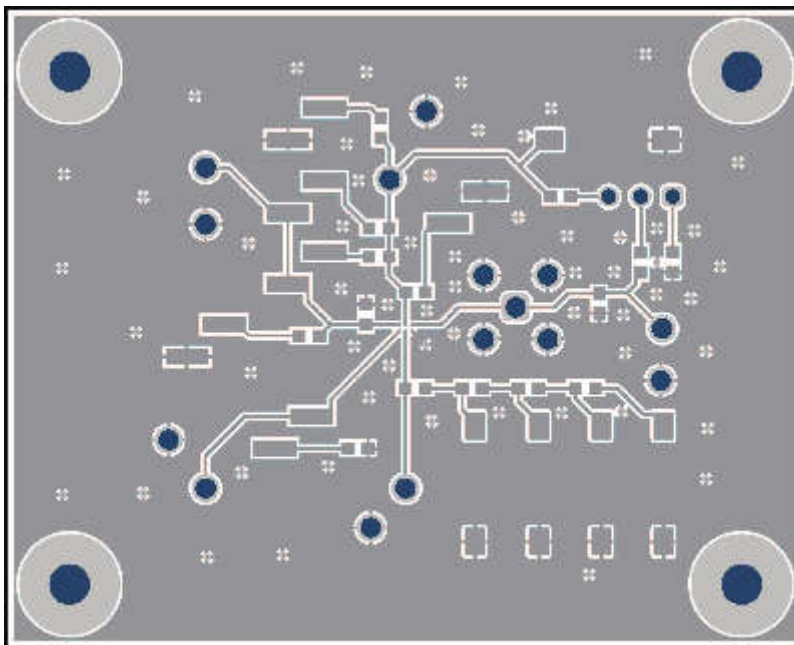


Figure 3-3. Top Layer

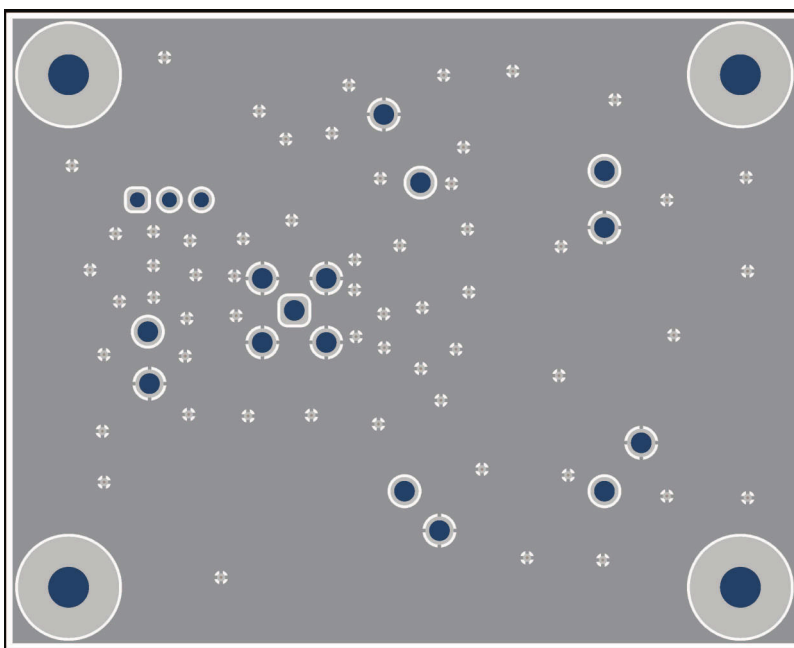


Figure 3-4. Bottom Layer

3.3 Bill of Materials (BOM)

Table 3-1. List of Materials

ITEM NO	REFERENCE DESIGNATOR	DESCRIPTION	MANUFACTURER	PART NUMBER	QUANTITY
1	C1	Capacitor, Ceramic, 300pF, 50V, $\pm 5\%$, C0G/NP0, 0603	MuRata	GRM1885C1H301JA01D	1
2	C2	CAP, CERM, 200pF, 50V, $\pm 5\%$, C0G/NP0, 0603	MuRata	GRM1885C1H201JA01D	1
3	C3	CAP, CERM, 0.1uF, 50V, $\pm 10\%$, X7R, 0603	MuRata	GCM188R71H104KA57D	1
4	C4	CAP, CERM, 0.1uF, 50V, $\pm 10\%$, X7R, 0603	MuRata	GCM188R71H104KA57D	1
5	GND_1	Test Point, Multipurpose, Black, TH	Keystone Electronics	5011	1
6	GND_2	Test Point, Multipurpose, Black, TH	Keystone Electronics	5011	1
7	GND_3	Test Point, Multipurpose, Black, TH	Keystone Electronics	5011	1
8	GND_4	Test Point, Multipurpose, Black, TH	Keystone Electronics	5011	1
9	GND_5	Test Point, Multipurpose, Black, TH	Keystone Electronics	5011	1
10	J1	Header, 2.54mm, 3x1, Gold, TH	Wurth Elektronik	61300311121	1
11	J2	Header, 100mil, 2x1, Tin, SMD	Samtec	TSM-102-01-T-SV-P-TR	1
12	J3	Header, 100mil, 2x1, Tin, SMD	Samtec	TSM-102-01-T-SV-P-TR	1
13	J4	Header, 100mil, 2x1, Tin, SMD	Samtec	TSM-102-01-T-SV-P-TR	1
14	J5	Header, 100mil, 2x1, Tin, SMD	Samtec	TSM-102-01-T-SV-P-TR	1
15	J6	Header, 100mil, 2x1, Tin, SMD	Samtec	TSM-102-01-T-SV-P-TR	1
16	J7	Header, 100mil, 2x1, Tin, SMD	Samtec	TSM-102-01-T-SV-P-TR	1
17	MIC	Test Point, Multipurpose, Red, TH	Keystone Electronics	5010	1
18	MICPWR	Test Point, Multipurpose, Yellow, TH	Keystone Electronics	5014	1
19	R1	RES, 20.0k, 1%, 0.1W, 0603	Vishay-Dale	CRCW060320K0FKEA	1
20	R2	RES, 2.21k, 1%, 0.1W, 0603	Vishay-Dale	CRCW06032K21FKEA	1
21	R3	RES, 2.00k, 1%, 0.1W, 0603	Vishay-Dale	CRCW06032K00FKEA	1
22	R4	RES, 1.00k, 1%, 0.1W, 0603	Vishay-Dale	CRCW06031K00FKEA	1
23	R5	RES, 100, 1%, 0.1W, 0603	Vishay-Dale	CRCW0603100RFKEA	1
24	R6	RES, 10.0k, 1%, 0.1W, 0603	Vishay-Dale	CRCW060310K0FKEA	1
25	R_B1	RES, 6.81k, 1%, 0.1W, 0603	Vishay-Dale	CRCW06036K81FKEA	1
26	R_B2	RES, 2.61k, 1%, 0.1W, 0603	Vishay-Dale	CRCW06032K61FKEA	1
27	R_B3	RES, 3.57 k, 1%, 0.1W, 0603	Vishay-Dale	CRCW06033K57FKEA	1
28	R_B4	RES, 6.81k, 1%, 0.1W, 0603	Vishay-Dale	CRCW06036K81FKEA	1
29	REM	Test Point, Multipurpose, Yellow, TH	Keystone Electronics	5014	1
30	S0	Tactile Switch SPST-NO Top Actuated Surface Mount	TE	FSMSM	1
31	S1	Tactile Switch SPST-NO Top Actuated Surface Mount	TE	FSMSM	1

Table 3-1. List of Materials (continued)

ITEM NO	REFERENCE DESIGNATOR	DESCRIPTION	MANUFACTURER	PART NUMBER	QUANTITY
32	S2	Tactile Switch SPST-NO Top Actuated Surface Mount	TE	FSMSM	1
33	S3	Tactile Switch SPST-NO Top Actuated Surface Mount	TE	FSMSM	1
34	S4	Tactile Switch SPST-NO Top Actuated Surface Mount	TE	FSMSM	1
35	TONE	Test Point, Multipurpose, Yellow, TH	Keystone Electronics	5014	1
36	TONE_TP	SMA, 50Ohm, Gold, TH	Rosenberger	32K101-400L5	1
37	U1	CD3268A0YZPR / CD3269A0YZPR	Texas Instruments	CD3268A0YZPR / CD3269A0YZPR	1
38	VSHUNT	Test Point, Multipurpose, Red, TH	Keystone Electronics	5010	1

4 Additional Information

4.1 Known Hardware or Software Issues

To measure the shunt regulator output impedance using the CD326xEVM, remove the C4 capacitor because the capacitor produces an AC ground on the VSHUNT pin.

4.2 Trademarks

iPhone® and iPad® are registered trademarks of Apple, Inc..
All trademarks are the property of their respective owners.

5 Related Documentation

See the CD326x data sheet, [Audio Interface Transmitter for Specially Enabled Headsets](#), for more details on device specifications and functionality.

5.1 Supplemental Content

- See Chapter 54: *Headset Remote and Microphone Transmitter* in [Accessory Design Guidelines for Apple Devices](#) from the [Apple Development Page](#)

STANDARD TERMS FOR EVALUATION MODULES

1. *Delivery:* TI delivers TI evaluation boards, kits, or modules, including any accompanying demonstration software, components, and/or documentation which may be provided together or separately (collectively, an "EVM" or "EVMs") to the User ("User") in accordance with the terms set forth herein. User's acceptance of the EVM is expressly subject to the following terms.
 - 1.1 EVMs are intended solely for product or software developers for use in a research and development setting to facilitate feasibility evaluation, experimentation, or scientific analysis of TI semiconductors products. EVMs have no direct function and are not finished products. EVMs shall not be directly or indirectly assembled as a part or subassembly in any finished product. For clarification, any software or software tools provided with the EVM ("Software") shall not be subject to the terms and conditions set forth herein but rather shall be subject to the applicable terms that accompany such Software
 - 1.2 EVMs are not intended for consumer or household use. EVMs may not be sold, sublicensed, leased, rented, loaned, assigned, or otherwise distributed for commercial purposes by Users, in whole or in part, or used in any finished product or production system.
2. *Limited Warranty and Related Remedies/Disclaimers:*
 - 2.1 These terms do not apply to Software. The warranty, if any, for Software is covered in the applicable Software License Agreement.
 - 2.2 TI warrants that the TI EVM will conform to TI's published specifications for ninety (90) days after the date TI delivers such EVM to User. Notwithstanding the foregoing, TI shall not be liable for a nonconforming EVM if (a) the nonconformity was caused by neglect, misuse or mistreatment by an entity other than TI, including improper installation or testing, or for any EVMs that have been altered or modified in any way by an entity other than TI, (b) the nonconformity resulted from User's design, specifications or instructions for such EVMs or improper system design, or (c) User has not paid on time. Testing and other quality control techniques are used to the extent TI deems necessary. TI does not test all parameters of each EVM. User's claims against TI under this Section 2 are void if User fails to notify TI of any apparent defects in the EVMs within ten (10) business days after delivery, or of any hidden defects with ten (10) business days after the defect has been detected.
 - 2.3 TI's sole liability shall be at its option to repair or replace EVMs that fail to conform to the warranty set forth above, or credit User's account for such EVM. TI's liability under this warranty shall be limited to EVMs that are returned during the warranty period to the address designated by TI and that are determined by TI not to conform to such warranty. If TI elects to repair or replace such EVM, TI shall have a reasonable time to repair such EVM or provide replacements. Repaired EVMs shall be warranted for the remainder of the original warranty period. Replaced EVMs shall be warranted for a new full ninety (90) day warranty period.

WARNING

Evaluation Kits are intended solely for use by technically qualified, professional electronics experts who are familiar with the dangers and application risks associated with handling electrical mechanical components, systems, and subsystems.

User shall operate the Evaluation Kit within TI's recommended guidelines and any applicable legal or environmental requirements as well as reasonable and customary safeguards. Failure to set up and/or operate the Evaluation Kit within TI's recommended guidelines may result in personal injury or death or property damage. Proper set up entails following TI's instructions for electrical ratings of interface circuits such as input, output and electrical loads.

NOTE:

EXPOSURE TO ELECTROSTATIC DISCHARGE (ESD) MAY CAUSE DEGRADATION OR FAILURE OF THE EVALUATION KIT; TI RECOMMENDS STORAGE OF THE EVALUATION KIT IN A PROTECTIVE ESD BAG.

3 Regulatory Notices:

3.1 United States

3.1.1 Notice applicable to EVMs not FCC-Approved:

FCC NOTICE: This kit is designed to allow product developers to evaluate electronic components, circuitry, or software associated with the kit to determine whether to incorporate such items in a finished product and software developers to write software applications for use with the end product. This kit is not a finished product and when assembled may not be resold or otherwise marketed unless all required FCC equipment authorizations are first obtained. Operation is subject to the condition that this product not cause harmful interference to licensed radio stations and that this product accept harmful interference. Unless the assembled kit is designed to operate under part 15, part 18 or part 95 of this chapter, the operator of the kit must operate under the authority of an FCC license holder or must secure an experimental authorization under part 5 of this chapter.

3.1.2 For EVMs annotated as FCC – FEDERAL COMMUNICATIONS COMMISSION Part 15 Compliant:

CAUTION

This device complies with part 15 of the FCC Rules. Operation is subject to the following two conditions: (1) This device may not cause harmful interference, and (2) this device must accept any interference received, including interference that may cause undesired operation.

Changes or modifications not expressly approved by the party responsible for compliance could void the user's authority to operate the equipment.

FCC Interference Statement for Class A EVM devices

NOTE: This equipment has been tested and found to comply with the limits for a Class A digital device, pursuant to part 15 of the FCC Rules. These limits are designed to provide reasonable protection against harmful interference when the equipment is operated in a commercial environment. This equipment generates, uses, and can radiate radio frequency energy and, if not installed and used in accordance with the instruction manual, may cause harmful interference to radio communications. Operation of this equipment in a residential area is likely to cause harmful interference in which case the user will be required to correct the interference at his own expense.

FCC Interference Statement for Class B EVM devices

NOTE: This equipment has been tested and found to comply with the limits for a Class B digital device, pursuant to part 15 of the FCC Rules. These limits are designed to provide reasonable protection against harmful interference in a residential installation. This equipment generates, uses and can radiate radio frequency energy and, if not installed and used in accordance with the instructions, may cause harmful interference to radio communications. However, there is no guarantee that interference will not occur in a particular installation. If this equipment does cause harmful interference to radio or television reception, which can be determined by turning the equipment off and on, the user is encouraged to try to correct the interference by one or more of the following measures:

- *Reorient or relocate the receiving antenna.*
- *Increase the separation between the equipment and receiver.*
- *Connect the equipment into an outlet on a circuit different from that to which the receiver is connected.*
- *Consult the dealer or an experienced radio/TV technician for help.*

3.2 Canada

3.2.1 For EVMs issued with an Industry Canada Certificate of Conformance to RSS-210 or RSS-247

Concerning EVMs Including Radio Transmitters:

This device complies with Industry Canada license-exempt RSSs. Operation is subject to the following two conditions:

(1) this device may not cause interference, and (2) this device must accept any interference, including interference that may cause undesired operation of the device.

Concernant les EVMs avec appareils radio:

Le présent appareil est conforme aux CNR d'Industrie Canada applicables aux appareils radio exempts de licence. L'exploitation est autorisée aux deux conditions suivantes: (1) l'appareil ne doit pas produire de brouillage, et (2) l'utilisateur de l'appareil doit accepter tout brouillage radioélectrique subi, même si le brouillage est susceptible d'en compromettre le fonctionnement.

Concerning EVMs Including Detachable Antennas:

Under Industry Canada regulations, this radio transmitter may only operate using an antenna of a type and maximum (or lesser) gain approved for the transmitter by Industry Canada. To reduce potential radio interference to other users, the antenna type and its gain should be so chosen that the equivalent isotropically radiated power (e.i.r.p.) is not more than that necessary for successful communication. This radio transmitter has been approved by Industry Canada to operate with the antenna types listed in the user guide with the maximum permissible gain and required antenna impedance for each antenna type indicated. Antenna types not included in this list, having a gain greater than the maximum gain indicated for that type, are strictly prohibited for use with this device.

Concernant les EVMs avec antennes détachables

Conformément à la réglementation d'Industrie Canada, le présent émetteur radio peut fonctionner avec une antenne d'un type et d'un gain maximal (ou inférieur) approuvé pour l'émetteur par Industrie Canada. Dans le but de réduire les risques de brouillage radioélectrique à l'intention des autres utilisateurs, il faut choisir le type d'antenne et son gain de sorte que la puissance isotrope rayonnée équivalente (p.i.r.e.) ne dépasse pas l'intensité nécessaire à l'établissement d'une communication satisfaisante. Le présent émetteur radio a été approuvé par Industrie Canada pour fonctionner avec les types d'antenne énumérés dans le manuel d'usage et ayant un gain admissible maximal et l'impédance requise pour chaque type d'antenne. Les types d'antenne non inclus dans cette liste, ou dont le gain est supérieur au gain maximal indiqué, sont strictement interdits pour l'exploitation de l'émetteur.

3.3 Japan

3.3.1 *Notice for EVMs delivered in Japan:* Please see http://www.tij.co.jp/sds/ti_ja/general/eStore/notice_01.page 日本国内に輸入される評価用キット、ボードについては、次のところをご覧ください。

<https://www.ti.com/ja-jp/legal/notice-for-evaluation-kits-delivered-in-japan.html>

3.3.2 *Notice for Users of EVMs Considered "Radio Frequency Products" in Japan:* EVMs entering Japan may not be certified by TI as conforming to Technical Regulations of Radio Law of Japan.

If User uses EVMs in Japan, not certified to Technical Regulations of Radio Law of Japan, User is required to follow the instructions set forth by Radio Law of Japan, which includes, but is not limited to, the instructions below with respect to EVMs (which for the avoidance of doubt are stated strictly for convenience and should be verified by User):

1. Use EVMs in a shielded room or any other test facility as defined in the notification #173 issued by Ministry of Internal Affairs and Communications on March 28, 2006, based on Sub-section 1.1 of Article 6 of the Ministry's Rule for Enforcement of Radio Law of Japan,
2. Use EVMs only after User obtains the license of Test Radio Station as provided in Radio Law of Japan with respect to EVMs, or
3. Use of EVMs only after User obtains the Technical Regulations Conformity Certification as provided in Radio Law of Japan with respect to EVMs. Also, do not transfer EVMs, unless User gives the same notice above to the transferee. Please note that if User does not follow the instructions above, User will be subject to penalties of Radio Law of Japan.

【無線電波を送信する製品の開発キットをお使いになる際の注意事項】 開発キットの中には技術基準適合証明を受けていないものがあります。技術適合証明を受けていないもののご使用に際しては、電波法遵守のため、以下のいずれかの措置を取っていただく必要がありますのでご注意ください。

1. 電波法施行規則第6条第1項第1号に基づく平成18年3月28日総務省告示第173号で定められた電波暗室等の試験設備でご使用いただく。
2. 実験局の免許を取得後ご使用いただく。
3. 技術基準適合証明を取得後ご使用いただく。

なお、本製品は、上記の「ご使用にあたっての注意」を譲渡先、移転先に通知しない限り、譲渡、移転できないものとします。

上記を遵守頂けない場合は、電波法の罰則が適用される可能性があることをご留意ください。 日本テキサス・インスツルメンツ株式会社
東京都新宿区西新宿 6 丁目 2 4 番 1 号
西新宿三井ビル

3.3.3 *Notice for EVMs for Power Line Communication:* Please see http://www.tij.co.jp/sds/ti_ja/general/eStore/notice_02.page

電力線搬送波通信についての開発キットをお使いになる際の注意事項については、次のところをご覧ください。<https://www.ti.com/ja-jp/legal/notice-for-evaluation-kits-for-power-line-communication.html>

3.4 European Union

3.4.1 *For EVMs subject to EU Directive 2014/30/EU (Electromagnetic Compatibility Directive):*

This is a class A product intended for use in environments other than domestic environments that are connected to a low-voltage power-supply network that supplies buildings used for domestic purposes. In a domestic environment this product may cause radio interference in which case the user may be required to take adequate measures.

4 *EVM Use Restrictions and Warnings:*

4.1 EVMS ARE NOT FOR USE IN FUNCTIONAL SAFETY AND/OR SAFETY CRITICAL EVALUATIONS, INCLUDING BUT NOT LIMITED TO EVALUATIONS OF LIFE SUPPORT APPLICATIONS.

4.2 User must read and apply the user guide and other available documentation provided by TI regarding the EVM prior to handling or using the EVM, including without limitation any warning or restriction notices. The notices contain important safety information related to, for example, temperatures and voltages.

4.3 *Safety-Related Warnings and Restrictions:*

4.3.1 User shall operate the EVM within TI's recommended specifications and environmental considerations stated in the user guide, other available documentation provided by TI, and any other applicable requirements and employ reasonable and customary safeguards. Exceeding the specified performance ratings and specifications (including but not limited to input and output voltage, current, power, and environmental ranges) for the EVM may cause personal injury or death, or property damage. If there are questions concerning performance ratings and specifications, User should contact a TI field representative prior to connecting interface electronics including input power and intended loads. Any loads applied outside of the specified output range may also result in unintended and/or inaccurate operation and/or possible permanent damage to the EVM and/or interface electronics. Please consult the EVM user guide prior to connecting any load to the EVM output. If there is uncertainty as to the load specification, please contact a TI field representative. During normal operation, even with the inputs and outputs kept within the specified allowable ranges, some circuit components may have elevated case temperatures. These components include but are not limited to linear regulators, switching transistors, pass transistors, current sense resistors, and heat sinks, which can be identified using the information in the associated documentation. When working with the EVM, please be aware that the EVM may become very warm.

4.3.2 EVMs are intended solely for use by technically qualified, professional electronics experts who are familiar with the dangers and application risks associated with handling electrical mechanical components, systems, and subsystems. User assumes all responsibility and liability for proper and safe handling and use of the EVM by User or its employees, affiliates, contractors or designees. User assumes all responsibility and liability to ensure that any interfaces (electronic and/or mechanical) between the EVM and any human body are designed with suitable isolation and means to safely limit accessible leakage currents to minimize the risk of electrical shock hazard. User assumes all responsibility and liability for any improper or unsafe handling or use of the EVM by User or its employees, affiliates, contractors or designees.

4.4 User assumes all responsibility and liability to determine whether the EVM is subject to any applicable international, federal, state, or local laws and regulations related to User's handling and use of the EVM and, if applicable, User assumes all responsibility and liability for compliance in all respects with such laws and regulations. User assumes all responsibility and liability for proper disposal and recycling of the EVM consistent with all applicable international, federal, state, and local requirements.

5. *Accuracy of Information:* To the extent TI provides information on the availability and function of EVMs, TI attempts to be as accurate as possible. However, TI does not warrant the accuracy of EVM descriptions, EVM availability or other information on its websites as accurate, complete, reliable, current, or error-free.

6. *Disclaimers:*

6.1 EXCEPT AS SET FORTH ABOVE, EVMS AND ANY MATERIALS PROVIDED WITH THE EVM (INCLUDING, BUT NOT LIMITED TO, REFERENCE DESIGNS AND THE DESIGN OF THE EVM ITSELF) ARE PROVIDED "AS IS" AND "WITH ALL FAULTS." TI DISCLAIMS ALL OTHER WARRANTIES, EXPRESS OR IMPLIED, REGARDING SUCH ITEMS, INCLUDING BUT NOT LIMITED TO ANY EPIDEMIC FAILURE WARRANTY OR IMPLIED WARRANTIES OF MERCHANTABILITY OR FITNESS FOR A PARTICULAR PURPOSE OR NON-INFRINGEMENT OF ANY THIRD PARTY PATENTS, COPYRIGHTS, TRADE SECRETS OR OTHER INTELLECTUAL PROPERTY RIGHTS.

6.2 EXCEPT FOR THE LIMITED RIGHT TO USE THE EVM SET FORTH HEREIN, NOTHING IN THESE TERMS SHALL BE CONSTRUED AS GRANTING OR CONFERRING ANY RIGHTS BY LICENSE, PATENT, OR ANY OTHER INDUSTRIAL OR INTELLECTUAL PROPERTY RIGHT OF TI, ITS SUPPLIERS/LICENSORS OR ANY OTHER THIRD PARTY, TO USE THE EVM IN ANY FINISHED END-USER OR READY-TO-USE FINAL PRODUCT, OR FOR ANY INVENTION, DISCOVERY OR IMPROVEMENT, REGARDLESS OF WHEN MADE, CONCEIVED OR ACQUIRED.

7. *USER'S INDEMNITY OBLIGATIONS AND REPRESENTATIONS.* USER WILL DEFEND, INDEMNIFY AND HOLD TI, ITS LICENSORS AND THEIR REPRESENTATIVES HARMLESS FROM AND AGAINST ANY AND ALL CLAIMS, DAMAGES, LOSSES, EXPENSES, COSTS AND LIABILITIES (COLLECTIVELY, "CLAIMS") ARISING OUT OF OR IN CONNECTION WITH ANY HANDLING OR USE OF THE EVM THAT IS NOT IN ACCORDANCE WITH THESE TERMS. THIS OBLIGATION SHALL APPLY WHETHER CLAIMS ARISE UNDER STATUTE, REGULATION, OR THE LAW OF TORT, CONTRACT OR ANY OTHER LEGAL THEORY, AND EVEN IF THE EVM FAILS TO PERFORM AS DESCRIBED OR EXPECTED.

8. *Limitations on Damages and Liability:*

8.1 *General Limitations.* IN NO EVENT SHALL TI BE LIABLE FOR ANY SPECIAL, COLLATERAL, INDIRECT, PUNITIVE, INCIDENTAL, CONSEQUENTIAL, OR EXEMPLARY DAMAGES IN CONNECTION WITH OR ARISING OUT OF THESE TERMS OR THE USE OF THE EVMS , REGARDLESS OF WHETHER TI HAS BEEN ADVISED OF THE POSSIBILITY OF SUCH DAMAGES. EXCLUDED DAMAGES INCLUDE, BUT ARE NOT LIMITED TO, COST OF REMOVAL OR REINSTALLATION, ANCILLARY COSTS TO THE PROCUREMENT OF SUBSTITUTE GOODS OR SERVICES, RETESTING, OUTSIDE COMPUTER TIME, LABOR COSTS, LOSS OF GOODWILL, LOSS OF PROFITS, LOSS OF SAVINGS, LOSS OF USE, LOSS OF DATA, OR BUSINESS INTERRUPTION. NO CLAIM, SUIT OR ACTION SHALL BE BROUGHT AGAINST TI MORE THAN TWELVE (12) MONTHS AFTER THE EVENT THAT GAVE RISE TO THE CAUSE OF ACTION HAS OCCURRED.

8.2 *Specific Limitations.* IN NO EVENT SHALL TI'S AGGREGATE LIABILITY FROM ANY USE OF AN EVM PROVIDED HEREUNDER, INCLUDING FROM ANY WARRANTY, INDEMNITY OR OTHER OBLIGATION ARISING OUT OF OR IN CONNECTION WITH THESE TERMS, , EXCEED THE TOTAL AMOUNT PAID TO TI BY USER FOR THE PARTICULAR EVM(S) AT ISSUE DURING THE PRIOR TWELVE (12) MONTHS WITH RESPECT TO WHICH LOSSES OR DAMAGES ARE CLAIMED. THE EXISTENCE OF MORE THAN ONE CLAIM SHALL NOT ENLARGE OR EXTEND THIS LIMIT.

9. *Return Policy.* Except as otherwise provided, TI does not offer any refunds, returns, or exchanges. Furthermore, no return of EVM(s) will be accepted if the package has been opened and no return of the EVM(s) will be accepted if they are damaged or otherwise not in a resalable condition. If User feels it has been incorrectly charged for the EVM(s) it ordered or that delivery violates the applicable order, User should contact TI. All refunds will be made in full within thirty (30) working days from the return of the components(s), excluding any postage or packaging costs.

10. *Governing Law:* These terms and conditions shall be governed by and interpreted in accordance with the laws of the State of Texas, without reference to conflict-of-laws principles. User agrees that non-exclusive jurisdiction for any dispute arising out of or relating to these terms and conditions lies within courts located in the State of Texas and consents to venue in Dallas County, Texas. Notwithstanding the foregoing, any judgment may be enforced in any United States or foreign court, and TI may seek injunctive relief in any United States or foreign court.

Mailing Address: Texas Instruments, Post Office Box 655303, Dallas, Texas 75265
Copyright © 2023, Texas Instruments Incorporated

IMPORTANT NOTICE AND DISCLAIMER

TI PROVIDES TECHNICAL AND RELIABILITY DATA (INCLUDING DATA SHEETS), DESIGN RESOURCES (INCLUDING REFERENCE DESIGNS), APPLICATION OR OTHER DESIGN ADVICE, WEB TOOLS, SAFETY INFORMATION, AND OTHER RESOURCES "AS IS" AND WITH ALL FAULTS, AND DISCLAIMS ALL WARRANTIES, EXPRESS AND IMPLIED, INCLUDING WITHOUT LIMITATION ANY IMPLIED WARRANTIES OF MERCHANTABILITY, FITNESS FOR A PARTICULAR PURPOSE OR NON-INFRINGEMENT OF THIRD PARTY INTELLECTUAL PROPERTY RIGHTS.

These resources are intended for skilled developers designing with TI products. You are solely responsible for (1) selecting the appropriate TI products for your application, (2) designing, validating and testing your application, and (3) ensuring your application meets applicable standards, and any other safety, security, regulatory or other requirements.

These resources are subject to change without notice. TI grants you permission to use these resources only for development of an application that uses the TI products described in the resource. Other reproduction and display of these resources is prohibited. No license is granted to any other TI intellectual property right or to any third party intellectual property right. TI disclaims responsibility for, and you will fully indemnify TI and its representatives against, any claims, damages, costs, losses, and liabilities arising out of your use of these resources.

TI's products are provided subject to [TI's Terms of Sale](#) or other applicable terms available either on [ti.com](https://www.ti.com) or provided in conjunction with such TI products. TI's provision of these resources does not expand or otherwise alter TI's applicable warranties or warranty disclaimers for TI products.

TI objects to and rejects any additional or different terms you may have proposed.

Mailing Address: Texas Instruments, Post Office Box 655303, Dallas, Texas 75265
Copyright © 2025, Texas Instruments Incorporated