

AN-1119 Voltage Doubler Design and Analysis

ABSTRACT

Today's wireless applications demand lower operating voltages. A voltage doubler provides a means of obtaining a wider VCO tuning range at lower voltages. This paper discusses the considerations that need to be made when using a voltage doubler. Specific test results are shown for a CDMA application.

Contents

1	INTRODUCTION	2
2	VOLTAGE DOUBLER CONCEPTS	2
3	DESIGN CONSIDERATIONS	3
	3.1 Steady State Voltage Loss When in Lock	3
	3.2 Dynamic V_p Droop During Frequency Changes	3
	3.3 V_p Charge Time	4
4	SUMMARY	5
5	EXAMPLE	5
	5.1 Voltage Doubler Design Parameters	5

List of Figures

1	Voltage Doubler Switched Capacitor Circuit	2
2	Voltage Doubler Switched Capacitor Realization Equivalent	2
3	Steady State V_p vs. F_{pd} ($OSC_{in} = 10$ MHz; $V_{CC} = 3.0V$)	3
4	LMX2350 Efficiency Factor vs. I_{cp}	4
5	Loop Filter	4
6	Measured Voltage Droop	6
7	Measured Initial V_p Charge Time	6

1 INTRODUCTION

Today's wireless applications demand lower operating voltages. A voltage doubler provides a means of obtaining a wider VCO tuning range at lower voltages. This paper discusses the considerations that need to be made when using a voltage doubler. Specific test results are shown for a CDMA application.

The LMX2350 provides an internal switched capacitor voltage doubler circuit that allows the RF charge pump to operate close to twice the RF V_{CC} voltage. An external capacitor, C_{ext} , placed across the voltage doubler's output, V_P , is charged up by the internal switched capacitor switched on and off at the rate of the RF crystal oscillator frequency. The minimum allowable voltage droop will determine the size of the external capacitor. The amount of current the voltage doubler can deliver and still maintain its voltage is considerably smaller than the instantaneous current demanded by the charge pump when it is on. Therefore, a large external capacitor is needed to reduce the voltage droop. The time it takes the voltage doubler to charge the external capacitor to twice V_{CC} once the part is enabled is also set by the size of the external capacitor. Another consideration when using the voltage doubler is the average current required by the charge pump when the PLL is locked. This current will reduce the output voltage of the doubler.

NOTE: For the LMX2350/52/54 Frequency Synthesizer Series, the voltage output of the doubler cannot exceed the 5.5 volts, which is the maximum specification for the RF charge pump power supply, V_P .

2 VOLTAGE DOUBLER CONCEPTS

The voltage doubler uses a switched capacitor to double the supply voltage, shown in [Figure 1](#).

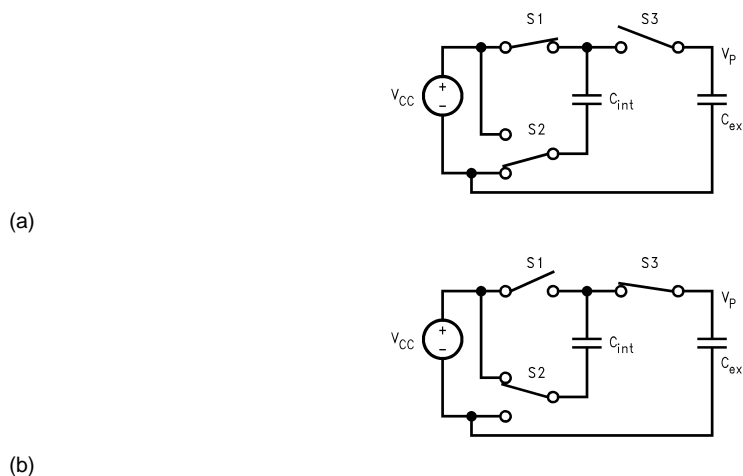


Figure 1. Voltage Doubler Switched Capacitor Circuit

During the first half of the oscillator cycle switch S1 is closed, S2 is down and S3 is open, as shown in [Figure 1a](#). This allows the internal capacitor to charge up to V_{CC} . The second half of the oscillator cycle switch S1 is open, S2 is up, and S3 is closed, as shown in [Figure 1b](#). This places the voltage on the internal capacitor in series with the supply voltage. Charge is redistributed to the external capacitor, C_{ext} . The internal switched capacitor can be ideally represented as a resistor and a voltage source as shown in [Figure 2](#).

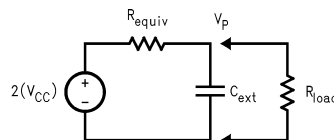


Figure 2. Voltage Doubler Switched Capacitor Realization Equivalent

$$R_{equiv} = \frac{1}{C_{int} \cdot F_{clock}} \quad (1)$$

F_{clock} = RF Crystal Oscillator Input Frequency

3 DESIGN CONSIDERATIONS

3.1 Steady State Voltage Loss When in Lock

The steady state voltage loss is the difference between the ideal doubled voltage and the actual steady state V_P voltage. The steady state voltage loss is set by three factors; charge pump current setting, phase detector frequency, and RF oscillator frequency. When the PLL is locked, the charge pump is on for a short period of time every phase detector cycle. Current is required during this on time to operate the charge pump. These bursts of current averaged over the entire phase detector period can be viewed as a constant load, as shown in Figure 2. This load will reduce the voltage doubler's output voltage, V_P . Higher charge pump current settings and higher phase detector frequencies will increase the average load current, decreasing the voltage doubler's output voltage, V_P . However, a higher RF Oscillator Frequency will reduce the switched capacitor equivalent resistance, increasing the voltage doubler's output voltage, V_P . Figure 3 plots the LMX2350 steady state V_P voltage versus phase detector frequency, F_{pd} , for three charge pump current settings when the RF Oscillator Frequency is 10 MHz and V_{CC} set to 3.0V.

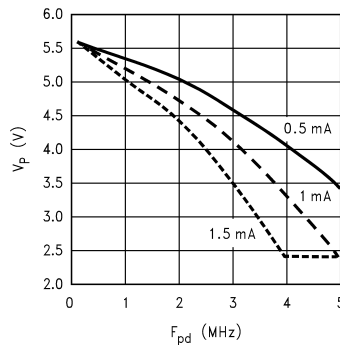


Figure 3. Steady State V_P vs. F_{pd} ($OSC_{in} = 10$ MHz; $V_{CC} = 3.0V$)

Equation 2 can be used to linearly approximate the steady state voltage loss for the LMX2350.

$$V_{SS} = 0.3 - \frac{F_{pd}(\text{MHz})[2 + 4I_{cp}(\text{mA})]}{OSC_{in}(\text{MHz})} \quad (2)$$

3.2 Dynamic V_P Droop During Frequency Changes

When the PLL is programmed to switch frequencies, the loop voltage is forced to a new level corresponding to the new VCO frequency. Charge is either put into or removed from the loop filter depending on whether the loop voltage needs to be increased or decreased. Since the voltage doubler cannot source large amounts of current, the external capacitor needs to supply the current required to change the loop filter voltage. The external capacitor must be initially charged before the charge pump can transfer charge to the loop filter. The transfer of charge will cause the voltage on the external capacitor, C_{ext} , to decrease or droop. This voltage droop will reduce the effective upper limit of the VCO tuning range. Some charge is lost trying to change the loop filter voltage due to charge pump overhead current, which is current consumed by the charge pump circuitry. Equation 3 shows the charge transfer relation.

$$\text{Transfer Loss } C_{ext} \Delta V_P = Q_{\text{Transfer}} = C_{\text{loop}} \Delta V_{\text{loop}} \quad (3)$$

When current is demanded to change the loop voltage, some current is lost to overhead. The ratio of overhead current to the actual current delivered to the loop filter is referred to as the efficiency factor, Eff_Factor . The LMX2350 has sixteen charge pump current settings with each one having a different Eff_Factor . The Eff_Factor for the LMX2350 for each charge pump current setting is shown in Figure 4.

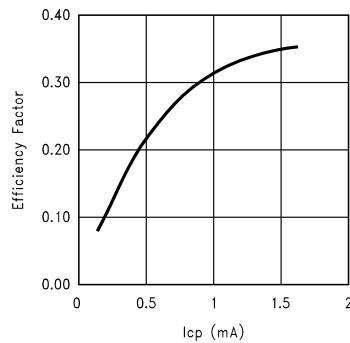


Figure 4. LMX2350 Efficiency Factor vs. Icp

Cycle slipping will reduce the efficiency factor even further. Cycle slipping occurs when the VCO frequency does not change fast enough causing the two phase detector inputs to slip past each other. When this occurs the charge appears to be on 50% of the time.

The external capacitor, C_{ext} connected to voltage doubler V_p pin can be found using [Equation 4](#).

$$C_{ext} = \frac{\Delta V_{loop}}{\Delta V_p} C_{loop} \frac{1}{0.5 \text{Eff_Factor}} \quad (4)$$

V_{loop} is chosen to be the entire tuning range voltage.

The loop filter capacitance, C_{loop} , is found by adding $C1$ and $C2$ (assuming the internal VCO capacitance is much less than $C1$) as shown in [Figure 5](#).

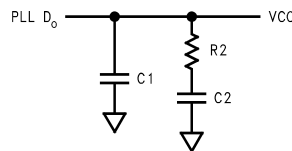


Figure 5. Loop Filter

3.3 V_p Charge Time

The voltage doubler must be allowed to precharge before the charge pump is enabled. When using the LMX2350, the charge pump must be tri-stated by powering down the RF side via the internal register bit, to allow the external capacitor to precharge. The LMX2350's voltage doubler will be operational as long as the external RF enable pin is high, and the crystal oscillator input is present.

The voltage doubler must also be allowed to recover between frequency changes. As discussed in the previous section a frequency change will result in a V_p voltage droop. The voltage doubler must recharge the external capacitor back to its steady state voltage before another frequency change can occur.

The amount of time it takes the voltage doubler to charge the external capacitor can be determined using the simple RC time constant from [Figure 2](#). Where C is the external capacitor and R is the switched capacitor equivalent resistance, found using [Equation 1](#). The LMX2350 has an internal capacitor of 36 pF (picofarads). [Equation 5](#) calculates the time required for the external capacitor to charge to 98% of its maximum voltage.

$$t = 5\tau = 5R_{equiv}C_{ext} = \frac{5C_{ext}}{C_{int}F_{clock}} \quad (5)$$

4 SUMMARY

When low operating voltages are required, a voltage doubler can increase the VCO tuning range. There are three factors that will set the maximum tuning voltage. The first limiting factor is the steady state voltage loss resulting from some average load current when locked. Equation 2 is used to approximate the steady state voltage loss. The second limiting factor is dynamic V_p droop voltage as a result of switching PLL frequencies. The third limiting factor for the VCO tuning range is the charge pump output voltage range, which is a fixed 0.5V below the charge pump supply voltage, V_p . The only limiting factor that can be set is the dynamic V_p droop voltage. Once the dynamic V_p droop voltage is determined, the external capacitor is calculated using Equation 4. One last consideration when using a voltage doubler is to determine the charge time of the external capacitor as a result of completely powering down the RF PLL and charge time required to recover from a V_p droop after changing frequencies. The charge time can be found using Equation 5.

5 EXAMPLE

5.1 Voltage Doubler Design Parameters

$$V_{CC} = 3.0V$$

$$C_{loop} = 11 \text{ nf}$$

$$\text{VCO Tuning Range} = 0.5V \text{ to } 4.0V$$

$$\text{OSC}_x \text{ (RF Oscillator Frequency)} = 14.4 \text{ MHz}$$

$$I_{cp} \text{ (Charge Pump Current)} = 900 \mu A$$

$$F_{pd} \text{ (Phase Detector Frequency)} = 30 \text{ kHz}$$

$$\Delta V_p \text{ (Maximum Allowable Droop)} = 1V$$

I. Calculate Steady State V_p Level

$$V_{SS} = 0.3 - \frac{F_{pd}(\text{MHz})[2 + 4I_{cp}(\text{mA})]}{\text{OSC}_{in}(\text{MHz})}$$

$$V_{SS} = 0.3 - \frac{0.03 \times [2 + 4 \times 0.9]}{14.4} = 0.29V \quad (6)$$

II. Calculate C_{ext}

$$C_{ext} = \frac{\Delta V_{loop}}{\Delta V_p} C_{loop} \frac{1}{\text{Eff_Factor}}^2$$

$$C_{ext} = \frac{4}{1} \times 11e^{-9} \times \frac{1}{0.3} \times 2 = 290e^{-9}F \quad (7)$$

III. Determine V_p Charge Time

$$t = 5\tau = 5R_{equiv}C_{ext} = \frac{5C_{ext}}{C_{int}F_{clock}}$$

$$t = \frac{5 \times 290e^{-9}}{36e^{-12} \times 14.4e^6} = 2.8e^{-3}s \quad (8)$$

Measured Results

- Max. Tuning Voltage $6 - 0.3 - 0.8 - 0.5 = 4.4V$
 - $(6 = 2 \times 3V; 0.3 = V_{SS}; 0.8 = \text{max. droop during frequency changes, } 0.5 = \text{suggested fixed voltage below } V_p)$
- Switched Capacitor Settling Time $\approx 3 \text{ ms}$
- $\approx 30/1$ Ratio between C_{loop} and C_{ext} $0.3 \mu F / 11 \text{ nF}$

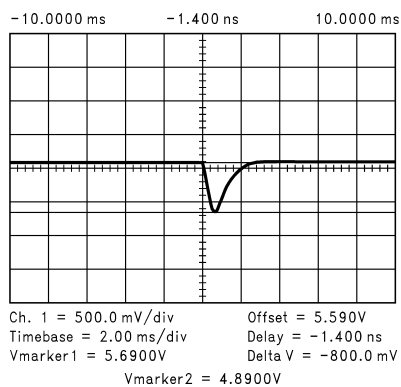


Figure 6. Measured Voltage Droop

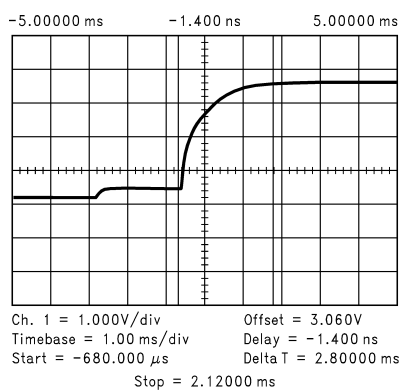


Figure 7. Measured Initial V_p Charge Time

IMPORTANT NOTICE

Texas Instruments Incorporated and its subsidiaries (TI) reserve the right to make corrections, enhancements, improvements and other changes to its semiconductor products and services per JESD46, latest issue, and to discontinue any product or service per JESD48, latest issue. Buyers should obtain the latest relevant information before placing orders and should verify that such information is current and complete. All semiconductor products (also referred to herein as "components") are sold subject to TI's terms and conditions of sale supplied at the time of order acknowledgment.

TI warrants performance of its components to the specifications applicable at the time of sale, in accordance with the warranty in TI's terms and conditions of sale of semiconductor products. Testing and other quality control techniques are used to the extent TI deems necessary to support this warranty. Except where mandated by applicable law, testing of all parameters of each component is not necessarily performed.

TI assumes no liability for applications assistance or the design of Buyers' products. Buyers are responsible for their products and applications using TI components. To minimize the risks associated with Buyers' products and applications, Buyers should provide adequate design and operating safeguards.

TI does not warrant or represent that any license, either express or implied, is granted under any patent right, copyright, mask work right, or other intellectual property right relating to any combination, machine, or process in which TI components or services are used. Information published by TI regarding third-party products or services does not constitute a license to use such products or services or a warranty or endorsement thereof. Use of such information may require a license from a third party under the patents or other intellectual property of the third party, or a license from TI under the patents or other intellectual property of TI.

Reproduction of significant portions of TI information in TI data books or data sheets is permissible only if reproduction is without alteration and is accompanied by all associated warranties, conditions, limitations, and notices. TI is not responsible or liable for such altered documentation. Information of third parties may be subject to additional restrictions.

Resale of TI components or services with statements different from or beyond the parameters stated by TI for that component or service voids all express and any implied warranties for the associated TI component or service and is an unfair and deceptive business practice. TI is not responsible or liable for any such statements.

Buyer acknowledges and agrees that it is solely responsible for compliance with all legal, regulatory and safety-related requirements concerning its products, and any use of TI components in its applications, notwithstanding any applications-related information or support that may be provided by TI. Buyer represents and agrees that it has all the necessary expertise to create and implement safeguards which anticipate dangerous consequences of failures, monitor failures and their consequences, lessen the likelihood of failures that might cause harm and take appropriate remedial actions. Buyer will fully indemnify TI and its representatives against any damages arising out of the use of any TI components in safety-critical applications.

In some cases, TI components may be promoted specifically to facilitate safety-related applications. With such components, TI's goal is to help enable customers to design and create their own end-product solutions that meet applicable functional safety standards and requirements. Nonetheless, such components are subject to these terms.

No TI components are authorized for use in FDA Class III (or similar life-critical medical equipment) unless authorized officers of the parties have executed a special agreement specifically governing such use.

Only those TI components which TI has specifically designated as military grade or "enhanced plastic" are designed and intended for use in military/aerospace applications or environments. Buyer acknowledges and agrees that any military or aerospace use of TI components which have **not** been so designated is solely at the Buyer's risk, and that Buyer is solely responsible for compliance with all legal and regulatory requirements in connection with such use.

TI has specifically designated certain components as meeting ISO/TS16949 requirements, mainly for automotive use. In any case of use of non-designated products, TI will not be responsible for any failure to meet ISO/TS16949.

Products

Audio	www.ti.com/audio
Amplifiers	amplifier.ti.com
Data Converters	dataconverter.ti.com
DLP® Products	www.dlp.com
DSP	dsp.ti.com
Clocks and Timers	www.ti.com/clocks
Interface	interface.ti.com
Logic	logic.ti.com
Power Mgmt	power.ti.com
Microcontrollers	microcontroller.ti.com
RFID	www.ti-rfid.com
OMAP Applications Processors	www.ti.com/omap
Wireless Connectivity	www.ti.com/wirelessconnectivity

Applications

Automotive and Transportation	www.ti.com/automotive
Communications and Telecom	www.ti.com/communications
Computers and Peripherals	www.ti.com/computers
Consumer Electronics	www.ti.com/consumer-apps
Energy and Lighting	www.ti.com/energy
Industrial	www.ti.com/industrial
Medical	www.ti.com/medical
Security	www.ti.com/security
Space, Avionics and Defense	www.ti.com/space-avionics-defense
Video and Imaging	www.ti.com/video

TI E2E Community

e2e.ti.com