

***AN-452 MICROWIRE Serial Interface***



Literature Number: SNOA743

# MICROWIRE™ Serial Interface

National Semiconductor  
Application Note 452  
Abdul Aleaf  
January 1992



## INTRODUCTION

MICROWIRE is a simple three-wire serial communications interface. Built into COPS™, this standardized protocol handles serial communications between controller and peripheral devices. In this application note are some clarifications of MICROWIRE logical operation and of hardware and software considerations.

## LOGICAL OPERATION

The MICROWIRE interface is essentially the serial I/O port on COPS microcontrollers, the SIO register in the shift register mode. SI is the shift register input, the serial input line to the microcontroller. SO is the shift register output, the serial output line to the peripherals. SK is the serial clock; data is clocked into or out of peripheral devices with this clock.

It is important to examine the logical diagram of the SIO and SK circuitry to fully understand the operation of this I/O port (Figure 1).

The output at SK is a function of SYNC, EN0, CARRY, and the XAS instruction. If CARRY had been set and propagated to the SKL latch by the execution of an XAS instruction, SYNC is enabled to SK and can only be overridden by EN0 (Figure 2). Trouble could arise if the user changes the state of EN0 without paying close attention to the state of the latch in the SK circuit.

If the latch is set to a logical high and the SIO register enabled as a binary counter, SK is driven high. From this state, if the SIO register is enabled as a serial shift register, SK will output the SYNC pulse immediately, without any intervening XAS instruction.

The SK clock (SYNC pulse) can be terminated by issuing an XAS instruction with CARRY = 0 (Figure 3).

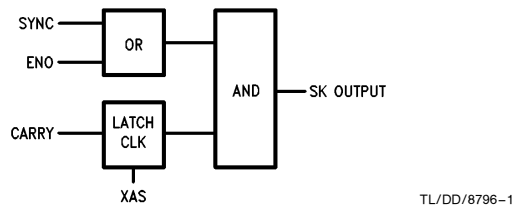


FIGURE 1. Logical Diagram of SK Circuit

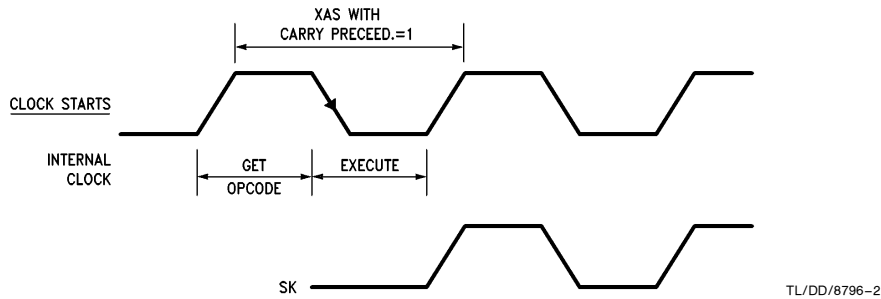


FIGURE 2. SK Clock Starts

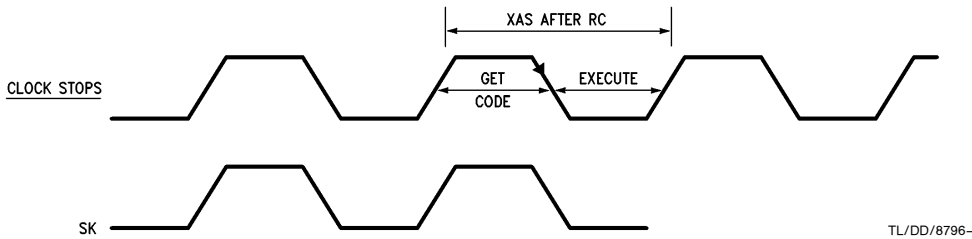


FIGURE 3. SK Clock Stops

MICROWIRE™, COPS™ and MOLE™ are trademarks of National Semiconductor Corp.  
TRI-STATE® is a registered trademark of National Semiconductor Corp.

The SIO register can be compared to four master-slave flip-flops shown in Figure 4. The masters are clocked by the rising edges of the internal clock. The slaves are clocked by the falling edges of the internal clock. Upon execution of an XAS, the outputs of the masters are exchanged with the contents of the accumulator (read and overdrive) in such a way that the new data are present at the inputs of the four slaves when the falling edge of the internal clock occurs. The content of the accumulator is, therefore, latched respectively in the four slave flip-flops and bit 3 appears directly on SO.

This means that:

- a) SO will be shifted out upon the falling edges of SK and will be stable during rising edges of SK.

- b) SI will be shifted in upon the rising edge of SK, and will be stable when executing, i.e., an XAS instruction.

The shifting function is automatically performed on each of the four instruction cycles that follow an XAS instruction (Figure 5).

When the SIO register is in the shift register mode ( $EN0 = 0$ ), it left shifts its contents once each instruction cycle. The data present on the SI input is shifted into the least significant bit (bit 0) of the serial shift register. SO will output the most significant bit of the SIO register (bit 3) if  $EN3 = 1$ . Otherwise, SO is held low. The SK is a logic controlled clock which issues a pulse each instruction cycle. To ensure that the serial data stream is continuous, an XAS instruction must be executed every fourth time. Serial I/O timing is related to instruction cycle timing in the following way:

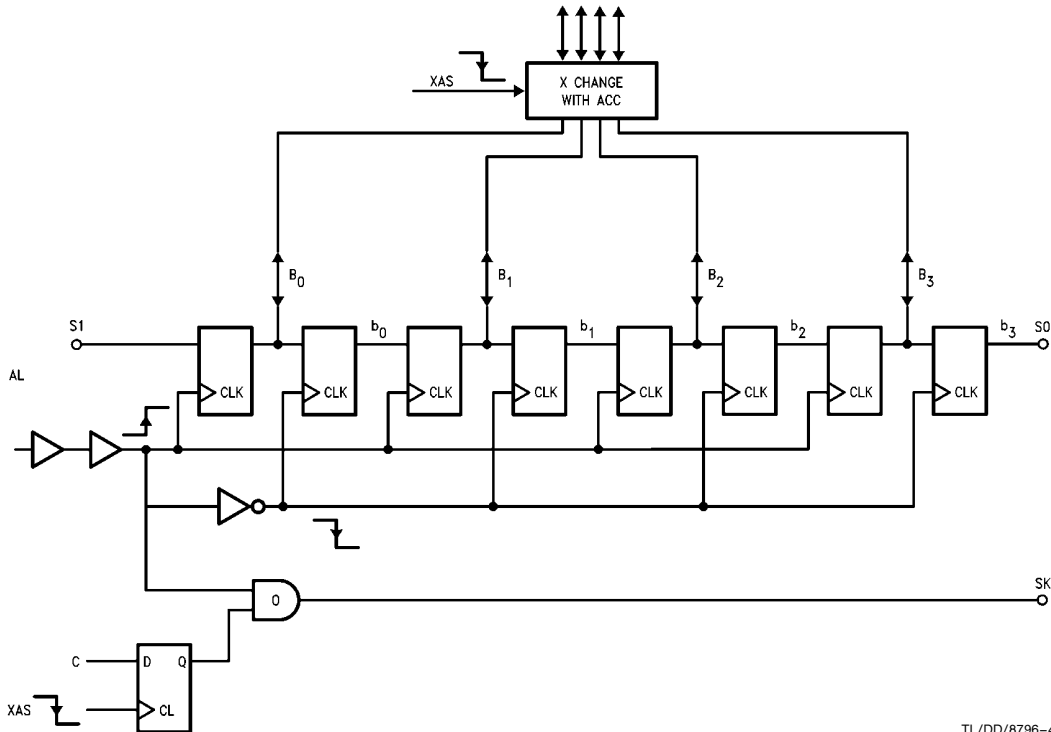


FIGURE 4

TL/DD/8796-4

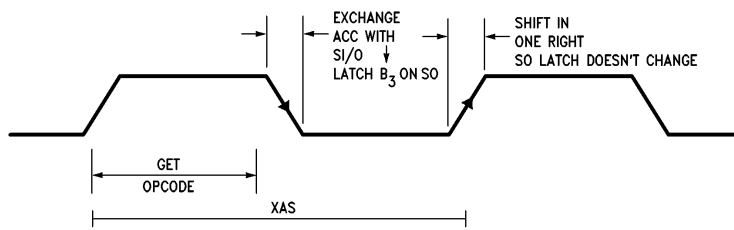
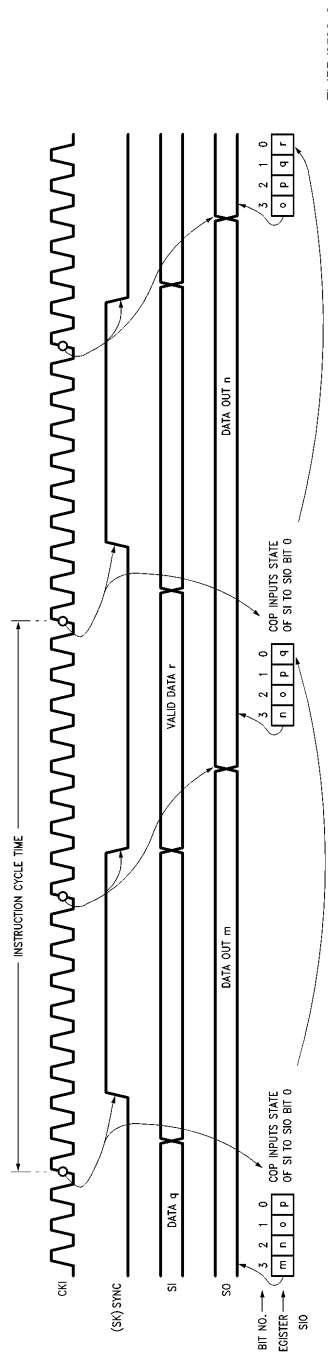


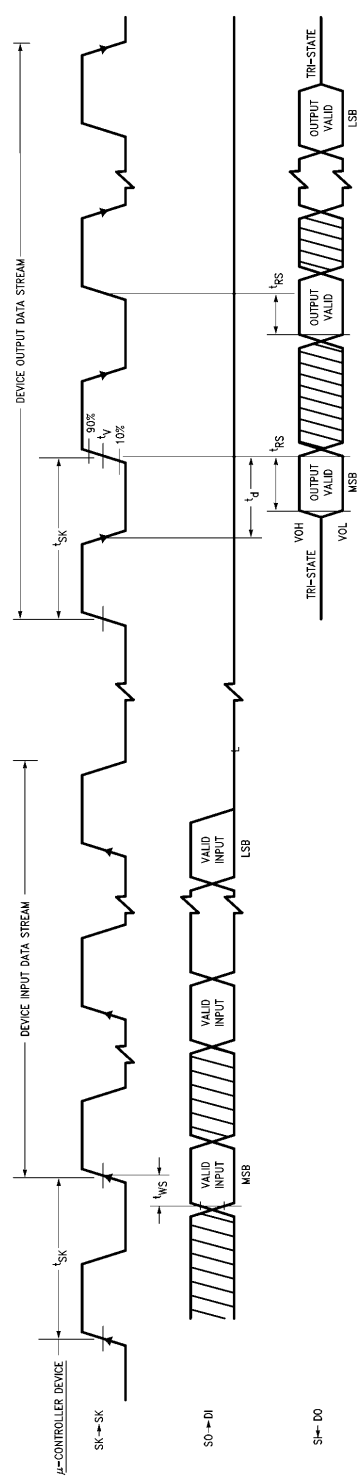
FIGURE 5. XAS Sequence

TL/DD/8796-5



TL/DD/8796-6

FIGURE 6. Serial I/O Timing



TL/DD/8796-7

FIGURE 7. MICROWIRE Serial Data Exchange Timing

To write to device:  $t_{RS} > t_{Ssetup}$   
 To read from device:  $t_D \leq t_{SK} - t_r$ ;  $t_{RS} > t_{SK}/4$   
 Where:  $t_{WS}$  is MICROWIRE write data-in (DI) setup time,  
 $t_{Ssetup}$  is device data sheet min data setup time to latch in valid data,  
 $t_{SK}$  is system clock (SK) cycle time (Recommended 50% duty cycle),  
 $t_r$  is rise time (10% to 70% bout) of system clock (SK),  
 $t_D$  is device actual delay time before data-out (DO) valid and  
 $t_{RS}$  is minimum data setup time for controller to shift-in valid data

The first clock rising edge of the instruction cycle triggers the low-to-high transition of SYNC output via SK. At this time, the processor reads the state of SI into SIO bit 0, shifting the current bits 0–2 left. Halfway through the cycle (shown in *Figure 6* as the eight clock rising edge), SK is reset low and the new SIO bit 3 is outputted via SO.

#### INTERFACING CONSIDERATIONS

To ensure data exchange, two aspects of interfacing have to be considered: 1) serial data exchange timing; 2) fan-out/fan-in requirements. Theoretically, infinite devices can access the same interface and be uniquely enabled sequentially in time. In practice, however, the actual number of devices that can access the same serial interface depends on the following: system data transfer rate, system supply requirement capacitive loading on SK and SO outputs, the fan-in requirements of the logic families or discrete devices to be interfaced.

#### HARDWARE INTERFACE

Provided an output can switch between a HIGH level and a LOW level, it must do so in a predetermined amount of time for the data transfer to occur. Since the transfer is strictly synchronous, the timing is related to the system clock (SK) (*Figure 7*). For example, if a COPS controller outputs a value at the falling edge of the clock and is latched in by the peripheral device at the rising edge, then the following relationship has to be satisfied:

$$t_{\text{DELAY}} + t_{\text{SETUP}} \leq t_{\text{CK}}$$

where  $t_{\text{CK}}$  is the time from data output starts to switch to data being latched into the peripheral chip,  $t_{\text{SETUP}}$  is the setup time for the peripheral device where the data has to be at a valid level, and  $t_{\text{DELAY}}$  is the time for the output to read the valid level.  $t_{\text{CK}}$  is related to the system clock provided by the SK pin of the COPS controller and can be increased by increasing the COPS instruction cycle time.

The maximum  $t_{\text{SETUP}}$  is specified in the peripheral chip data sheets. The maximum  $t_{\text{DELAY}}$  allowed may then be derived from the above relationship.

Most of the delay time before the output becomes valid comes from charging the capacitive load connected to the output. Each integrated circuit pin has a maximum load of 7 pF. Other sources come from connecting wires and connection from PC boards. The total capacitive load may then be estimated. The propagation delay values given in data sheets assume particular capacitive loads (e.g.  $V_{\text{CC}} = 5\text{V}$ ,  $V_{\text{OH}} = 0.4\text{V}$ , loading = 50 pF, etc.).

If the calculated load is less than the given load, those values should be used. Otherwise, a conservative estimate is to assume that the delay time is proportional to the capacitive load.

If the capacitive load is too large to satisfy the delay time criterion, then three choices are available. An external buffer may be used to drive the large load. The COPS instruction cycle may be slowed down. An external pullup resistor may be added to speed up the LOW level to HIGH level transition. The resistor will also increase the output LOW level and increase the HIGH level to LOW level transition time, but the increased time is negligible as long as the output LOW level changes by less than 0.3V. For a 100 pF load, the standard COPS controller may use a 4.7k external resistor, with the output LOW level increased by less than

0.2V. For the same load, the low power COPS controller may use a 22k resistor, with the SO and SK LOW levels increased by less than 0.1V.

Besides the timing requirements, system supply and fan-out/fan-in requirements also have to be considered when interfacing with MICROWIRE. For the following discussion, we assume single supply push-pull outputs for system clock (SK) and serial output (SO), high-impedance input for serial input (SI).

To drive multi-devices on the same MICROWIRE, the output drivers of the controller need to source and sink the total maximum leakage current of all the inputs connected to it and keep the signal level within the valid logic “1” or logic “0”. However, in general, different logic families have different valid “1” and “0” input voltage levels. Thus, if devices of different types are connected to the same serial interface, the output driver of the controller must satisfy all the input requirements of each device. Similarly, devices with TRI-STATE® outputs, when connected to the SI input, must satisfy the minimum valid input level of the controller and the maximum TRI-STATE leakage current of all outputs.

So, for devices that have incompatible input levels or source/sink requirements, external pull-up resistors or buffers are necessary to provide level-shifting or driving.

#### SOFTWARE INTERFACE

The existing MICROWIRE protocol is very flexible, basically divided into two groups:

- 1) 1AAA.....ADDD.....D  
 where leading 1 is the start bit and leading zeroes are ignored.  
 AAA.....A is device variable instruction/address word.  
 DDD.....D is variable data stream between controller and device.
- 2) No start bit, just bit stream, i.e., bbb.....b  
 where b is a variable bit stream. Thus, device has to decode various fields within the bit stream by counting exact bit position.

#### SERIAL I/O ROUTINES

Routines for handling serial I/O are provided below. The routines are written for 16-bit transmissions, but are trivially expandable up to 64-bit transmissions by merely changing the initial LBI instruction. The routines arbitrarily select register 0 as the I/O register. It is assumed that the external device requires a logic low chip select. It is further assumed that chip select is high and SK and SO are low on entry to the routines. The routines exit with chip select high, SK and SO low. GO is arbitrarily chosen as the chip select for the external device.

#### SERIAL DATA OUTPUT

This routine outputs the data under the conditions specified above. The transmitted data is preserved in the microcontroller.

```

OUT2:  LBI  0,12  ; point to start of
        ; data word
        SC
        OGI  14   ; select the external
        ; device

```

TABLE I. MICROWIRE Standard Family

Features	Part Number			
	DS8908	MM545X	COP472-3 COP430 (ADC83X)	NM93C06A
<b>GENERAL</b>				
Chip Function	AM/PM PLL	LED Display Driver	LCD Display Driver	A/D
Process	ECL	NMOS	CMOS	CMOS
V <sub>CC</sub> Range	4.75V–5.25V	4.5V–11V	3.0V–5.5V	4.5V–5.5V
Pinout	20	40	20	14
<b>HARDWARE INTERFACE</b>				
Min V <sub>IH</sub> /Max V <sub>IL</sub>	2.1V/0.7V	2.2V/0.8V	0.7V <sub>CC</sub> /0.8V	2.0V/0.8V
SK Clock Range	0–625 kHz	0–500 kHz	4–250 kHz	10–200 kHz
Write Data DI	Setup Min	0.3 μs	0.3 μs	1 μs
	Hold Min	0.8 μs	(3)	100 ns
Read Data Prop Delay	(Note 4)	(Note 3)	(Note 3)	(Note 3)
Chip Enable	Setup	0.3 μs	0.4 μs	1 μs (Note 1)
	HOLD	0.8 μs	(Note 3)	1 μs (Note 2)
Max Frequency Range	AM	8 MHz	(Note 3)	(Note 3)
	FM	120 MHz	(Note 3)	(Note 3)
<b>SOFT</b>				
Serial I/O Protocol	11D1...D20	1D1...D35	b1...b40	1xxx
Instruction/ Address Word	None	None	None	(Note 4)

Note 1: Reference to SK rising edge.

Note 2: Reference to SK falling edge.

Note 3: Not defined.

Note 4: See data sheet for different modes of operation.

```

LEI 8      ; enable shift
           register mode
JP  SEND2
SEND1: XAS
SEND2: LD   ; data output loop
      XIS
      JP  SEND1
      XAS ; send last data
      RC
      CLRA
      NOP
      XAS ; turn SK clock off
      OGI 15 ; deselect the device
      LEI 0 ; turn S0 low
      RET

```

The code for reading serial data is almost the same as the serial output code. This should be expected because of the nature of the SIO register and the XAS instruction.

#### MICROWIRE STANDARD FAMILY

A whole family of off-the-shelf devices exists that is directly compatible with MICROWIRE serial data exchange standard. This allows direct interface with the COPS family of microcontrollers.

Table I provides a summary of the existing devices and their functions and specifications.

#### TYPICAL APPLICATION

Figure 8 shows pin connection involved in interfacing an E<sup>2</sup>PROM with the COP420 microcontroller.

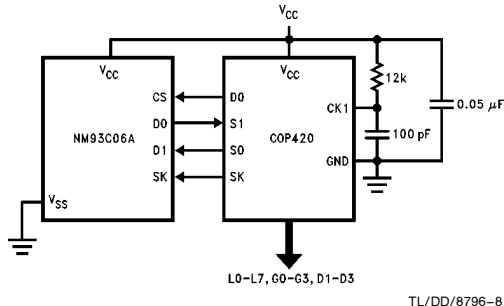


FIGURE 8. NM93C06A COP420 Interface

The following points have to be considered:

1. For NM93C06A the SK clock frequency should be in the 0 kHz–250 kHz range. This is easily achieved with COP420 running at 4 μs–10 μs instruction cycle time (SK period is the COP420 instruction cycle time). Since the minimum SK clock high time is greater than 1 μs, the duty cycle is not a critical factor as long as the frequency does not exceed the 250 kHz max.
2. CS low period following an E/W instruction must not exceed 30 ms maximum. It should be set at typical or minimum spec of 10 ms. This is easily done in software using the SKT timer on COP420.

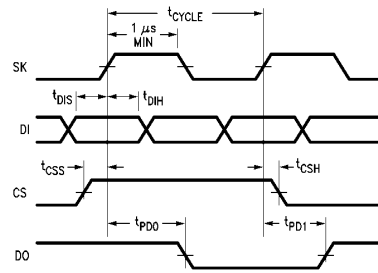


FIGURE 9. NM93C06A Timing

3. As shown in WRITE timing diagram, the start bit on DI must be set by a “0” to “1” transition following a CS enable (“0” to “1”) when executing any instruction. One CS enable transition can only execute one instruction.
4. In the read mode, following an instruction and data train, the DI can be a “don’t care,” while the data is being outputted, i.e., for the next 17 bits or clocks. The same is true for other instructions after the instruction and data has been fed in.
5. The data-out train starts with a dummy bit 0 and is terminated by chip deselect. Any extra SK cycle after 16 bits is not essential. If CS is held on after all 16 of the data bits have been outputted, the DO will output the state of DI until another CS LO to HI transition starts a new instruction cycle.
6. After a read cycle, the CS must be brought low for one SK clock cycle before another instruction cycle starts.

#### INSTRUCTION SET

Commands	Opcode	Comments
READ	10000A3A2A1A0	Read Register 0–15
WRITE	11000A3A2A1A0	Write Register 0–15
ERASE	10100A3A2A1A0	Erase Register 0–15
EWEN	111000 0 0 1	Write/Erase Enable
ENDS	111000 0 1 0	Write/Erase Disable
***WRAL	111000 1 0 0	Write All Registers
ERAL	111000 1 0 1	Erase All Registers

All commands, data in, and data out are shifted in/out on rising edge of SK clock.

Write/erase is then done by pulsing CS low for 10 ms.

All instructions are initiated by a LO-HI transition on CS followed by a LO-HI transition on DI.

READ— After read command is shifted in DI becomes don’t care and data can be read out on data out, starting with dummy bit zero.

WRITE— Write command shifted in followed by data in (16 bits) then CS pulsed low for 10 ms minimum.

ERASE

ERASE ALL—Command shifted in followed by CS low.

WRITE ALL—Pulsing CS low for 10 ms.

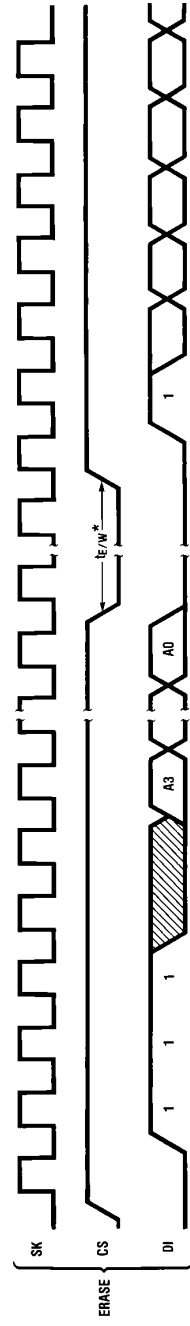
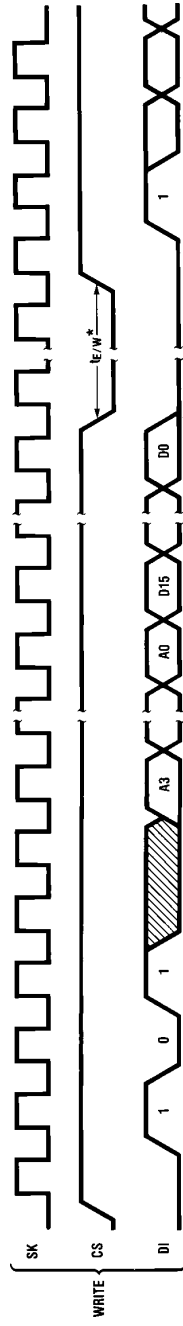
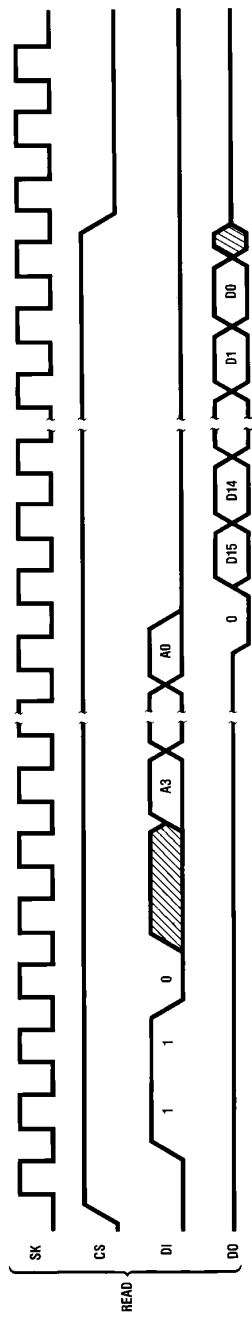
WRITE

ENABLE/DISABLE—Command shifted in.

\*\*\* (This instruction is not specified on Data sheet.)

TIMING WAVEFORMS

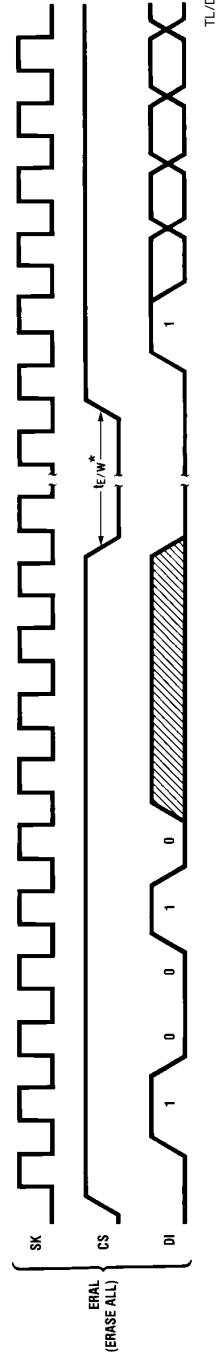
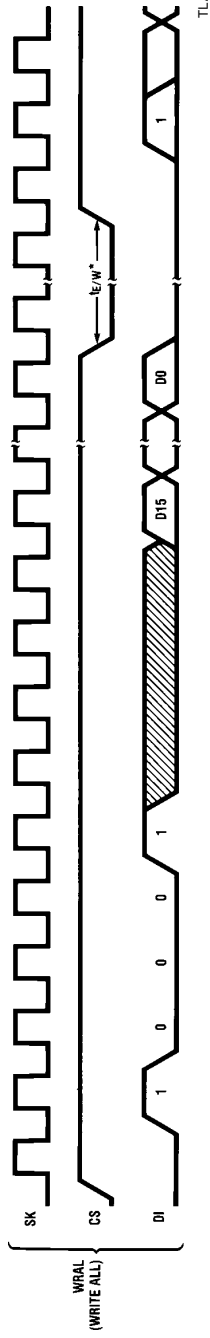
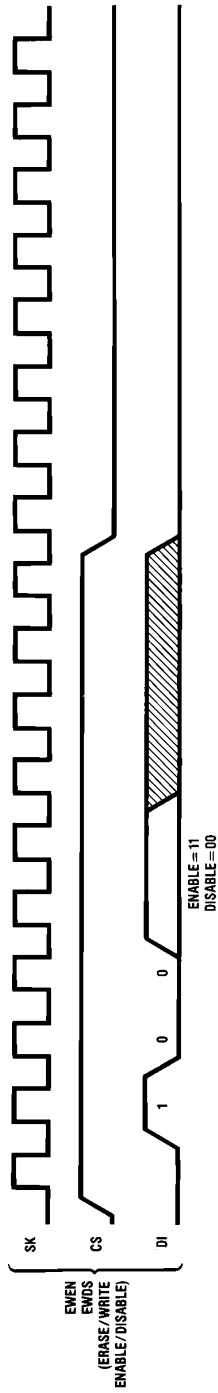
Instruction Timing



\*tE/w measured to rising edge of SK or CS, whichever occurs last.



TIMING WAVEFORMS (Continued)



\* $t_{E/w}$  measured to rising edge of SK or CS, whichever occurs last.

**I/O ROUTINE TO EVALUATE COP494**

```

1          .TITLE      E494, "I/O ROUTINE TO EVALUATE COP494"
2      01A4      .CHIP      420
3      0000      .PAGE      0
4
5          ;THIS IS I/O ROUTINE TO EVALUATE COP494
6          ;
7          ;
8
9          ;RAM VARIABLES DECLARATIONS:
10     000E      COMMAND = 0, 14      ;494 8BITS INST/ADDR WORD
11     001C      RWDATA = 1, 12      ;494 16BITS R/W DATA BUFFER
12
13     000 00      PON:   CLRA          ;POWER-ON INIT
14     001 32          RC          ;RESET SK CLOCK
15     002 4F          XAS
16     003 3F      CLRAM: LBI      3, 0      ;CLEAR RAM FROM 7, 0 TO 0, 15
17     004 00      CLR:   CLRA          ;
18     005 04          XIS          ;
19     006 C4          JP      CLR      ;CONTI CLEAR REG
20     007 12          XABR          ;(A) TO BR
21     008 5F          AISC      15      ;REG 0 CLEARED?
22     009 600F      DONE: JMP      C494DR      ;Y, DONE CLEAR RAM, CALL 494 D
23     00B 12          XABR          ;N, DEC BR
24     00C C4          JP      CLR      ;CONTI CLEAR REG TILL DONE
25     00D 44          NOP
26     00E 44          NOP
27
28          ;***      START 494 DRIVER SAMPLE CALLING SEQUENCE      ***
29
30          C494DR:          ;INIT CALLING SEQUENCE
31     00F 3350      OGI      0          ;GO=L TO DESELECT 494
32     011 3368      LEI      8          ;ENABLE SIO AS S.R.
33          ERASE:
34     013 0D          LBI      COMMAND      ;PRELOAD 494 ERASE REG A3-A0
35     014 7C          STII     0C          ;PRELOAD 494 ERASE INST
36     015 70          STII     0          ;SELECT REG A3-A0
37     016 690E      JSR      WI4P4      ;SEND IT
38          WEEN:
39     01B 0D          LBI      COMMAND      ;LOAD 494 WHEN REG A3-A0
40     019 73          STII     3          ;PRELOAD 494 WREN INST
41     01A 70          STII     0          ;SELECT REG A3-A0
42     01B 690E      JSR      WI494      ;SEND IT
43          WRITE:
44     01D 0D          LBI      COMMAND      ;PRELOAD WR REG A3-A0
45     01E 74          STII     4          ;PRELOAD 494 WRITE INST
46     01F 70          STII     0          ;SELECT REG A3-A0
47     020 1B          LBI      RWDATA      ;PRELOAD 494 SAMPLE WRITE DATA
48     021 75          STII     5
49     022 7A          STII     0N
50     023 75          STII     5

```

I/O ROUTINE TO EVALUATE COP494 (Continued)

```

51 024 7A          STII   0A
52 025 6900        JSR    WD494          ;SEND THEM TO 494
53                READ:
54 027 0D          LBI    COMMAND        ;PRELOAD READ REG A3-A0
55 028 78          STII   8              ;PRELOAD 494 READ INST
56 029 70          STII   0              ;SELECT REG A3-A0
57 02A 6908        JSR    RD494          ;READ 494 DATA BACK VIA SI
58 02C 44          NOP
59 02D 44          NOP
60
61      0080        .PAGE  2              ;SUBROUTINE PAGE
62 080 32          SETUP: RC              ;RESET SK BEFORE SELECT 494
63 081 4F          XAS
64 082 3351        OGI    1              ;GO=1 TO SELECT 494
65 084 00          CLRA                    ;ENSURE SO=L BEFORE GEN START B
66 085 22          SC                      ;
67 086 4F          XAS                    ;TURN ON SK CLOCK
68 087 00          CLRA                    ;GENERATE 494 START BIT
69 088 51          AISC  1              ;
70 089 22          SC                      ;
71 08A 4F          XAS                    ;SEND IT AS MSB VIA SO
72 08B 0D          LBI    COMMAND        ;FETCH 1ST INST/ADDR WORD
73 08C 05          LD
74 08D 44          NOP                    ;
75 08E 4F          XAS                    ;SEND IT (MSB OF INST FIRST)
76 08F 0E          LBI    COMMAND+1      ;FETCH 2ND INST/ADDR NIBBLE
77 090 05          LD
78 091 44          NOP
79 092 4F          XAS                    ;SEND IT
80 093 1B          LBI    RWDATA         ;POINT TO READ/WRITE DATA BUFFER
81 094 48          RET                    ;RET OF SETUP
82
83 095 00          TWEDLY: CLRA            ;VPP WIDTH, TWE>20MS @ 4Us/INST
84 096 5B          TWECONT: AISC  11      ;5 SKT LOOPS?
85 097 99          JP      . + 2          ;N,CONTI
86 098 48          TWEDONE: RET           ;Y,DONE
87 099 41          SKT
88 09A 99          JP      . -1          ;
89 09B 96          JP      TWECONT       ;CONTI TWE TIME
90
91 09C 48          RET;   RET            ;2 CYCLES DELAY
92
93      0100        .PAGE  4              ;
94
95                ;***   START 494 I/O DRIVER SUBROUTINE   ***
96
97 100 80          WD494: JSRP  SETUP        ;ENTRY TO WRITE 494 REG A3-A0
98 101 05          RWLOOP: LD             ;R/W 494 16 DATA BITS
99 102 4F          XAS
100 103 04         XIS                    ;

```

#### I/O ROUTINE TO EVALUATE COP494 (Continued)

```
101 104 C1      JP      RWLOOP
102 105 3350    OGI     0      ;DESELECT 494 AFTER R/W DATA
103 107 D1      JP      FINI      ;
104 108 80      RD494: JSRP   SETUP  ;ENTRY TO RD 494 REG A3-A0
105 109 00      CLRA    ;FINISH SEND OUT A3-A0 VIA SO
106 10A 44      NOP     ;
107 10B 44      NOP     ;WAIT 1BIT TIME FOR VALID D15
108 10C 44      NOP
109 10D C1      JP      RWLOOP  ;
110 10E 80      WI494: JSRP   SETUP  ;ENTRY TO WRITE INST TO 494
111 10F 00      CLRA    ;ENSURE SO = L
112 110 4F      XAS     ;
113 111 00      FINI:  CLRA    ;ENSURE SO = L BETWEEN INST
114 112 3350    OGI     0      ;DESELECT 494 BETWEEN INST WRIT
115 114 32      RC      ;
116 115 4F      XAS     ;TURN OFF SK CLOCK
117 116 95      JSRP   TWEDLY ;DELAY TWE >20MS TO PULSE VPP=21
118 117 48      RET     ;RET OF WD494 OR RD494 OR WI494
119
120             .END
```

#### SOFTWARE DEBUG OF SERIAL REGISTER FUNCTIONS

In order to understand the method of software debug when dealing with the SIO register, one must first become familiar with the method in which the COPS MOLE™ (Development System) BREAKPOINT and TRACE operations are carried out. Once these operations are explained, the difficulties which could arise when interrogating the status of the SIO register should become apparent.

#### SERIAL OUT DURING BREAKPOINT

When the MOLE BREAKPOINTS, the COPS user program execution is stopped and execution of a monitor-type program, within the COP device, is started. At no time does the COP part "idle." The monitor program loads the development system with the information contained in the COP registers.

Note also that single-step is simply a BREAKPOINT on every instruction.

If the COP chip is BREAKPOINTed while a serial function is in progress, the contents of the SIO register will be destroyed.

By the time the monitor program dumps the SIO register to the MOLE, the contents of the SIO register will have been written over by clocking in SI. To inspect the SIO register using BREAKPOINT, an XAS must be executed prior to BREAKPOINT; therefore, the SIO register will be saved in the accumulator.

An even more severe consequence is that the monitor program executes an XAS instruction to get the contents of the SIO register to the MOLE. Therefore, the SK latch is dependent on the state of the CARRY prior to the BREAKPOINT. In order to guarantee the integrity of the SIO register, one must carefully choose the position of the BREAKPOINT address.

As can be seen, it is impossible to single-step or BREAKPOINT through a serial operation in the SIO register.

#### SERIAL OUT DURING TRACE

In the TRACE mode, the user's program execution is never stopped. This mode is a real-time description of the program counter and the external event lines; therefore, the four external event lines can be used as logic analyzers to monitor the state of any input or output on the COPS device. The external event lines must be tied to the I/O which is to be monitored.

The state of these I/O (external event lines) is displayed along with the TRACE information. The safest way to monitor the real-time state of SO is to use the TRACE function in conjunction with the external event lines.

#### CONCLUSIONS

National's super-sensible MICROWIRE serial data exchange standard allows interfacing to any number of specialized peripherals using an absolute minimum number of valuable I/O pins; this leaves more I/O lines available for system interfacing and may permit the COPS controller to be packaged in a smaller package.

**LIFE SUPPORT POLICY**

NATIONAL'S PRODUCTS ARE NOT AUTHORIZED FOR USE AS CRITICAL COMPONENTS IN LIFE SUPPORT DEVICES OR SYSTEMS WITHOUT THE EXPRESS WRITTEN APPROVAL OF THE PRESIDENT OF NATIONAL SEMICONDUCTOR CORPORATION. As used herein:

1. Life support devices or systems are devices or systems which, (a) are intended for surgical implant into the body, or (b) support or sustain life, and whose failure to perform, when properly used in accordance with instructions for use provided in the labeling, can be reasonably expected to result in a significant injury to the user.
2. A critical component is any component of a life support device or system whose failure to perform can be reasonably expected to cause the failure of the life support device or system, or to affect its safety or effectiveness.



**National Semiconductor Corporation**  
 1111 West Bardin Road  
 Arlington, TX 76017  
 Tel: 1(800) 272-9959  
 Fax: 1(800) 737-7018

**National Semiconductor Europe**  
 Fax: (+49) 0-180-530 85 86  
 Email: onjwge@tevm2.nsc.com  
 Deutsch Tel: (+49) 0-180-530 85 85  
 English Tel: (+49) 0-180-532 78 32  
 Français Tel: (+49) 0-180-532 93 58  
 Italiano Tel: (+49) 0-180-534 16 80

**National Semiconductor Hong Kong Ltd.**  
 19th Floor, Straight Block,  
 Ocean Centre, 5 Canton Rd.  
 Tsimshatsui, Kowloon  
 Hong Kong  
 Tel: (852) 2737-1600  
 Fax: (852) 2736-9960

**National Semiconductor Japan Ltd.**  
 Tel: 81-043-299-2309  
 Fax: 81-043-299-2408

National does not assume any responsibility for use of any circuitry described, no circuit patent licenses are implied and National reserves the right at any time without notice to change said circuitry and specifications.

## IMPORTANT NOTICE

Texas Instruments Incorporated and its subsidiaries (TI) reserve the right to make corrections, modifications, enhancements, improvements, and other changes to its products and services at any time and to discontinue any product or service without notice. Customers should obtain the latest relevant information before placing orders and should verify that such information is current and complete. All products are sold subject to TI's terms and conditions of sale supplied at the time of order acknowledgment.

TI warrants performance of its hardware products to the specifications applicable at the time of sale in accordance with TI's standard warranty. Testing and other quality control techniques are used to the extent TI deems necessary to support this warranty. Except where mandated by government requirements, testing of all parameters of each product is not necessarily performed.

TI assumes no liability for applications assistance or customer product design. Customers are responsible for their products and applications using TI components. To minimize the risks associated with customer products and applications, customers should provide adequate design and operating safeguards.

TI does not warrant or represent that any license, either express or implied, is granted under any TI patent right, copyright, mask work right, or other TI intellectual property right relating to any combination, machine, or process in which TI products or services are used. Information published by TI regarding third-party products or services does not constitute a license from TI to use such products or services or a warranty or endorsement thereof. Use of such information may require a license from a third party under the patents or other intellectual property of the third party, or a license from TI under the patents or other intellectual property of TI.

Reproduction of TI information in TI data books or data sheets is permissible only if reproduction is without alteration and is accompanied by all associated warranties, conditions, limitations, and notices. Reproduction of this information with alteration is an unfair and deceptive business practice. TI is not responsible or liable for such altered documentation. Information of third parties may be subject to additional restrictions.

Resale of TI products or services with statements different from or beyond the parameters stated by TI for that product or service voids all express and any implied warranties for the associated TI product or service and is an unfair and deceptive business practice. TI is not responsible or liable for any such statements.

TI products are not authorized for use in safety-critical applications (such as life support) where a failure of the TI product would reasonably be expected to cause severe personal injury or death, unless officers of the parties have executed an agreement specifically governing such use. Buyers represent that they have all necessary expertise in the safety and regulatory ramifications of their applications, and acknowledge and agree that they are solely responsible for all legal, regulatory and safety-related requirements concerning their products and any use of TI products in such safety-critical applications, notwithstanding any applications-related information or support that may be provided by TI. Further, Buyers must fully indemnify TI and its representatives against any damages arising out of the use of TI products in such safety-critical applications.

TI products are neither designed nor intended for use in military/aerospace applications or environments unless the TI products are specifically designated by TI as military-grade or "enhanced plastic." Only products designated by TI as military-grade meet military specifications. Buyers acknowledge and agree that any such use of TI products which TI has not designated as military-grade is solely at the Buyer's risk, and that they are solely responsible for compliance with all legal and regulatory requirements in connection with such use.

TI products are neither designed nor intended for use in automotive applications or environments unless the specific TI products are designated by TI as compliant with ISO/TS 16949 requirements. Buyers acknowledge and agree that, if they use any non-designated products in automotive applications, TI will not be responsible for any failure to meet such requirements.

Following are URLs where you can obtain information on other Texas Instruments products and application solutions:

### Products

Audio	<a href="http://www.ti.com/audio">www.ti.com/audio</a>
Amplifiers	<a href="http://amplifier.ti.com">amplifier.ti.com</a>
Data Converters	<a href="http://dataconverter.ti.com">dataconverter.ti.com</a>
DLP® Products	<a href="http://www.dlp.com">www.dlp.com</a>
DSP	<a href="http://dsp.ti.com">dsp.ti.com</a>
Clocks and Timers	<a href="http://www.ti.com/clocks">www.ti.com/clocks</a>
Interface	<a href="http://interface.ti.com">interface.ti.com</a>
Logic	<a href="http://logic.ti.com">logic.ti.com</a>
Power Mgmt	<a href="http://power.ti.com">power.ti.com</a>
Microcontrollers	<a href="http://microcontroller.ti.com">microcontroller.ti.com</a>
RFID	<a href="http://www.ti-rfid.com">www.ti-rfid.com</a>
OMAP Mobile Processors	<a href="http://www.ti.com/omap">www.ti.com/omap</a>
Wireless Connectivity	<a href="http://www.ti.com/wirelessconnectivity">www.ti.com/wirelessconnectivity</a>

### Applications

Communications and Telecom	<a href="http://www.ti.com/communications">www.ti.com/communications</a>
Computers and Peripherals	<a href="http://www.ti.com/computers">www.ti.com/computers</a>
Consumer Electronics	<a href="http://www.ti.com/consumer-apps">www.ti.com/consumer-apps</a>
Energy and Lighting	<a href="http://www.ti.com/energy">www.ti.com/energy</a>
Industrial	<a href="http://www.ti.com/industrial">www.ti.com/industrial</a>
Medical	<a href="http://www.ti.com/medical">www.ti.com/medical</a>
Security	<a href="http://www.ti.com/security">www.ti.com/security</a>
Space, Avionics and Defense	<a href="http://www.ti.com/space-avionics-defense">www.ti.com/space-avionics-defense</a>
Transportation and Automotive	<a href="http://www.ti.com/automotive">www.ti.com/automotive</a>
Video and Imaging	<a href="http://www.ti.com/video">www.ti.com/video</a>

TI E2E Community Home Page

[e2e.ti.com](http://e2e.ti.com)

Mailing Address: Texas Instruments, Post Office Box 655303, Dallas, Texas 75265  
Copyright © 2011, Texas Instruments Incorporated