

TPS40345 3V~20V入力、同期整流バック・コントローラ

1 特長

- 入力電圧範囲: 3V~20V
- 600kHzのスイッチング周波数
- ハイサイドおよびローサイドFET $R_{DS(on)}$ 電流センシング
- プログラミング可能な温度補償付きOCPレベル
- プログラミング可能なソフト・スタート
- 基準電圧: 600mV、1.3%
- 電圧フィードフォワード補償
- プリバイアス出力をサポート
- 周波数スペクトラム拡散
- サーマル・シャットダウン保護: 145°C
- サーマル・パッドへのグランド接続を備えた10ピン3mmx3mm VSONパッケージ

2 アプリケーション

- POLモジュール
- プリント
- デジタル・テレビ
- 通信機器

3 概要

TPS40345は、3V~20Vの入力で動作する、コスト最適化設計の同期整流バック・コントローラです。電圧モード制御アーキテクチャを実装し、入力電圧フィードフォワード補償により入力電圧の変化に対して瞬時に応答します。スイッチング周波数は600kHzに固定されています。

周波数スペクトラム拡散(FSS)機能により、スイッチング周波数にディザリングを付加することで、ピークEMIノイズが大幅に低減され、EMI標準への準拠が容易になります。

TPS40345には、ソフト・スタート、過電流保護(OCP)レベル、ループ補償など、ユーザー・プログラミング可能な各種の機能が用意されています。

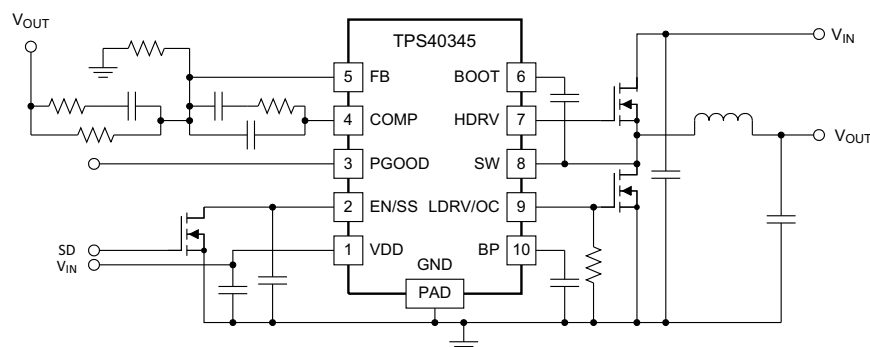
OCPレベルは、LDRVピンと回路のグランドとの間に接続する1個の外付け抵抗によってプログラミングできます。最初のパワーオン時に、TPS40345は較正サイクルに入り、LDRVピンの電圧を測定して、内部OCP電圧レベルを設定します。動作中、プログラミングされたOCP電圧レベルが、ローサイドFETのオン時の電圧降下と比較され、過電流状態が発生しているかどうかを確認されます。過電流状態の場合、TPS40345はシャットダウン/再起動サイクルに入り、障害が解消されるまでこのサイクルを繰り返します。

製品情報⁽¹⁾

| 型番 | パッケージ | 本体サイズ(公称) |
|----------|-----------|---------------|
| TPS40345 | VSON (10) | 3.00mmx3.00mm |

(1) 提供されているすべてのパッケージについては、データシートの末尾にある注文情報を参照してください。

アプリケーション概略図



Copyright © 2017, Texas Instruments Incorporated



目次

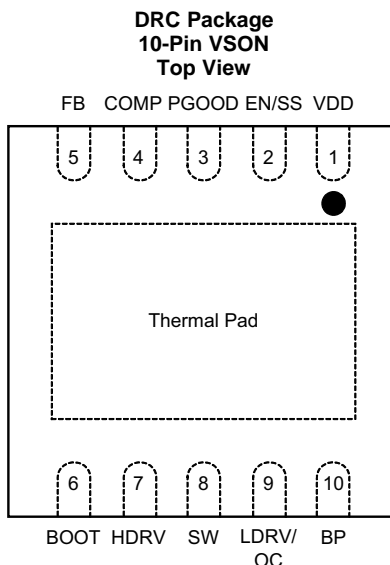
| | | | | | |
|----------|--|----------|-----------|---|-----------|
| 1 | 特長 | 1 | 8 | Application and Implementation | 13 |
| 2 | アプリケーション | 1 | 8.1 | Application Information..... | 13 |
| 3 | 概要 | 1 | 8.2 | Typical Applications | 13 |
| 4 | 改訂履歴 | 2 | 9 | Power Supply Recommendations | 17 |
| 5 | Pin Configuration and Functions | 3 | 10 | Layout | 18 |
| 6 | Specifications | 4 | 10.1 | Layout Guidelines | 18 |
| 6.1 | Absolute Maximum Ratings | 4 | 10.2 | Layout Example | 19 |
| 6.2 | ESD Ratings..... | 4 | 11 | デバイスおよびドキュメントのサポート | 20 |
| 6.3 | Recommended Operating Conditions | 4 | 11.1 | デバイス・サポート | 20 |
| 6.4 | Thermal Information | 4 | 11.2 | ドキュメントのサポート | 20 |
| 6.5 | Electrical Characteristics..... | 5 | 11.3 | ドキュメントの更新通知を受け取る方法..... | 20 |
| 6.6 | Typical Characteristics | 7 | 11.4 | コミュニティ・リソース | 20 |
| 7 | Detailed Description | 9 | 11.5 | 商標 | 20 |
| 7.1 | Overview | 9 | 11.6 | 静電気放電に関する注意事項 | 20 |
| 7.2 | Functional Block Diagram | 9 | 11.7 | Glossary | 20 |
| 7.3 | Feature Description..... | 9 | 12 | メカニカル、パッケージ、および注文情報 | 20 |
| 7.4 | Device Functional Modes..... | 12 | | | |

4 改訂履歴

資料番号末尾の英字は改訂を表しています。その改訂履歴は英語版に準じています。

| 日付 | 改訂内容 | 注 |
|----------|------|----|
| 2017年12月 | * | 初版 |

5 Pin Configuration and Functions



Pin Functions

| PIN | | I/O | DESCRIPTION |
|---------|-------------|-----|--|
| NAME | NO. | | |
| BOOT | 6 | I | Gate drive voltage for the high-side N-channel MOSFET. A 0.1- μ F capacitor (typical) must be connected between this pin and SW. For low input voltage operation, an external Schottky diode from BP to BOOT is recommended to maximize the gate drive voltage for the high-side. |
| BP | 10 | O | Output bypass for the internal regulator. Connect a low ESR bypass ceramic capacitor of 1 μ F or greater from this pin to GND. |
| COMP | 4 | O | Output of the error amplifier and connection node for loop feedback components. |
| EN/SS | 2 | I | Logic level input which starts or stops the controller via an external user command. Letting this pin float turns the controller on. Pulling this pin low disables the controller. This is also the soft-start programming pin. A capacitor connected from this pin to GND programs the soft-start time. The capacitor is charged with an internal current source of 10 μ A. The resulting voltage ramp of this pin is also used as a second non-inverting input to the error amplifier after a 0.8 V (typical) level shift downwards. Output regulation is controlled by the internal level shifted voltage ramp until that voltage reaches the internal reference voltage of 600 mV – the voltage ramp of this pin reaches 1.4 V (typical). Optionally, a 267-k Ω resistor from this pin to BP enables the FSS feature. |
| FB | 5 | I | Inverting input to the error amplifier. In normal operation, the voltage on this pin is equal to the internal reference voltage. |
| PGOOD | 3 | O | Open-drain power good output. |
| HDRV | 7 | O | Bootstrapped gate drive output for the high-side N-channel MOSFET. |
| LDRV/OC | 9 | O | Gate drive output for the low-side synchronous rectifier N-channel MOSFET. A resistor from this pin to GND is also used to determine the voltage level for OCP. An internal current source of 10 μ A flows through the resistor during initial calibration and that sets up the voltage trip point used for OCP. |
| VDD | 1 | I | Power input to the controller. Bypass VDD to GND with a low ESR ceramic capacitor of at least 1 μ F close to the device. |
| SW | 8 | O | Sense line for the adaptive anti-cross conduction circuitry. Serves as common connection for the flying high-side FET driver. |
| GND | Thermal Pad | — | Ground connection to the controller. This is also the thermal pad used to conduct heat from the device. This connection serves a twofold purpose. The first is to provide an electrical ground connection for the device. The second is to provide a low thermal impedance path from the device die to the PCB. This pad should be tied externally to a ground plane. |

6 Specifications

6.1 Absolute Maximum Ratings

over operating free-air temperature range (unless otherwise noted)⁽¹⁾

| | MIN | MAX | UNIT |
|---|------|-----|------|
| VDD | -0.3 | 22 | V |
| SW | -3 | 27 | V |
| SW (< 100 ns pulse width, 10 μ J) | | -5 | V |
| BOOT | -0.3 | 30 | V |
| HDRV | -5 | 30 | V |
| BOOT-SW, HDRV-SW (differential from BOOT or HDRV to SW) | -0.3 | 7 | V |
| COMP, PGOOD, FB, BP, LDRV, EN/SS | -0.3 | 7 | V |
| Operating junction temperature, T _J | -40 | 145 | °C |
| Storage temperature, T _{stg} | -55 | 150 | °C |

- (1) Stresses beyond those listed under Absolute Maximum Ratings may cause permanent damage to the device. These are stress ratings only and functional operation of the device at these or any other condition beyond those included under [Recommended Operating Conditions](#) is not implied. Exposure to absolute-maximum-rated conditions for extended periods of time may affect device reliability.

6.2 ESD Ratings

| | | VALUE | UNIT |
|--|--|-------|------|
| V _(ESD) Electrostatic discharge | Human-body model (HBM), per ANSI/ESDA/JEDEC JS-001 ⁽¹⁾ | ±2000 | V |
| | Charged-device model (CDM), per JEDEC specification JESD22-C101 ⁽²⁾ | ±1500 | |

- (1) JEDEC document JEP155 states that 500-V HBM allows safe manufacturing with a standard ESD control process.
 (2) JEDEC document JEP157 states that 250-V CDM allows safe manufacturing with a standard ESD control process.

6.3 Recommended Operating Conditions

| | MIN | NOM | MAX | UNIT |
|--|-----|-----|-----|------|
| Input voltage, VDD | 3 | | 20 | V |
| Operating junction temperature, T _J | -20 | | 125 | °C |

6.4 Thermal Information

| THERMAL METRIC ⁽¹⁾ | | TPS40345 | UNIT |
|-------------------------------|--|------------|------|
| | | DRC (VSON) | |
| | | 10 PINS | |
| R _{θJA} | Junction-to-ambient thermal resistance | 44.3 | °C/W |
| R _{θJC(top)} | Junction-to-case (top) thermal resistance | 56.1 | °C/W |
| R _{θJB} | Junction-to-board thermal resistance | 19.2 | °C/W |
| ψ _{JT} | Junction-to-top characterization parameter | 0.7 | °C/W |
| ψ _{JB} | Junction-to-board characterization parameter | 19.4 | °C/W |
| R _{θJC(bot)} | Junction-to-case (bottom) thermal resistance | 5.5 | °C/W |

- (1) For more information about traditional and new thermal metrics, see the [Semiconductor and IC Package Thermal Metrics](#) application report.

6.5 Electrical Characteristics

 $T_J = -20^\circ\text{C}$ to 125°C , $V_{DD} = 12\text{ V}$, all parameters at zero power dissipation (unless otherwise noted)

| PARAMETER | | TEST CONDITIONS | MIN | TYP | MAX | UNIT |
|--------------------------|---|---|--------------|------------|--------------|---------------|
| VOLTAGE REFERENCE | | | | | | |
| V_{FB} | FB input voltage | $T_J = 25^\circ\text{C}$, $3\text{ V} < V_{DD} < 20\text{ V}$ | 597 | 600 | 603 | mV |
| | | $-20^\circ\text{C} < T_J < 125^\circ\text{C}$, $3\text{ V} < V_{DD} < 20\text{ V}$ | 592 | 600 | 608 | |
| INPUT SUPPLY | | | | | | |
| V_{DD} | Input supply voltage range | | 3 | | 20 | V |
| I_{DDSD} | Shutdown supply current | $V_{EN/SS} < 0.2\text{ V}$ | | 70 | 100 | μA |
| I_{DDQ} | Quiescent, nonswitching | Let EN/SS float, $V_{FB} = 1\text{ V}$ | | 2.5 | 3.5 | mA |
| ENABLE/SOFT-START | | | | | | |
| V_{IH} | High-level input voltage, EN/SS | | 0.55 | 0.7 | 1 | V |
| V_{IL} | Low-level input voltage, EN/SS | | 0.27 | 0.3 | 0.33 | V |
| I_{SS} | Soft-start source current | | 8 | 10 | 12 | μA |
| V_{SS} | Soft-start voltage level | | 0.4 | 0.8 | 1.3 | V |
| BP REGULATOR | | | | | | |
| V_{BP} | Output voltage | $I_{BP} = 10\text{ mA}$ | 6.2 | 6.5 | 6.8 | V |
| V_{DO} | Regulator dropout voltage, $V_{DD} - V_{BP}$ | $I_{BP} = 25\text{ mA}$, $V_{DD} = 3\text{ V}$ | | 70 | 110 | mV |
| OSCILLATOR | | | | | | |
| f_{SW} | PWM frequency | | 540 | 600 | 660 | kHz |
| $V_{RAMP}^{(1)}$ | Ramp amplitude | | $V_{DD}/6.6$ | $V_{DD}/6$ | $V_{DD}/5.4$ | V |
| f_{SWFSS} | Frequency spread-spectrum frequency deviation | | 12% | | | f_{sw} |
| f_{MOD} | Modulation frequency | | | 25 | | kHz |
| PWM | | | | | | |
| $D_{MAX}^{(1)}$ | Maximum duty cycle | $V_{FB} = 0\text{ V}$, $3\text{ V} < V_{DD} < 20\text{ V}$ | 90% | | | |
| $t_{ON(min)}^{(1)}$ | Minimum controllable pulse width | | | | 70 | ns |
| t_{DEAD} | Output driver dead time | HDRV off to LDRV on | 5 | 25 | 35 | ns |
| | | LDRV off to HDRV on | 5 | 25 | 30 | |
| ERROR AMPLIFIER | | | | | | |
| $G_{BWP}^{(1)}$ | Gain bandwidth product | | 10 | 24 | | MHz |
| $A_{OL}^{(1)}$ | Open loop gain | | 60 | | | dB |
| I_{IB} | Input bias current (current out of FB pin) | $V_{FB} = 0.6\text{ V}$ | | | 75 | nA |
| I_{EAOP} | Output source current | $V_{FB} = 0\text{ V}$ | 2 | | | mA |
| I_{EAOM} | Output sink current | $V_{FB} = 1\text{ V}$ | 2 | | | |
| PGOOD | | | | | | |
| V_{OV} | Feedback upper voltage limit for PGOOD | | 655 | 675 | 700 | mV |
| V_{UV} | Feedback lower voltage limit for PGOOD | | 500 | 525 | 550 | |
| $V_{PGD-HYST}$ | PGOOD hysteresis voltage at FB | | | 25 | 40 | |
| R_{PGD} | PGOOD pulldown resistance | $V_{FB} = 0\text{ V}$, $I_{FB} = 5\text{ mA}$ | | 30 | 70 | Ω |
| I_{PGDLK} | PGOOD leakage current | $550\text{ mV} < V_{FB} < 655\text{ mV}$, $V_{PGOOD} = 5\text{ V}$ | | 10 | 20 | μA |

(1) Ensured by design. Not production tested.

Electrical Characteristics (continued)
 $T_J = -20^{\circ}\text{C}$ to 125°C , $V_{DD} = 12\text{ V}$, all parameters at zero power dissipation (unless otherwise noted)

| PARAMETER | | TEST CONDITIONS | MIN | TYP | MAX | UNIT |
|-------------------------------|--|--|------|------|------|--------------------|
| OUTPUT DRIVERS | | | | | | |
| R_{HDHI} | High-side driver pullup resistance | $V_{BOOT} - V_{SW} = 5\text{ V}$, $I_{HDRV} = -100\text{ mA}$ | 0.8 | 1.5 | 2.5 | Ω |
| R_{HDLO} | High-side driver pulldown resistance | $V_{BOOT} - V_{SW} = 5\text{ V}$, $I_{HDRV} = 100\text{ mA}$ | 0.5 | 1 | 2.2 | Ω |
| R_{LDHI} | Low-side driver pullup resistance | $I_{LDRV} = -100\text{ mA}$ | 0.8 | 1.5 | 2.5 | Ω |
| R_{LDLO} | Low-side driver pulldown resistance | $I_{LDRV} = 100\text{ mA}$ | 0.35 | 0.6 | 1.2 | Ω |
| $t_{HRISE}^{(1)}$ | High-side driver rise time | $C_{LOAD} = 5\text{ nF}$ | | 15 | | ns |
| $t_{HFALL}^{(1)}$ | High-side driver fall time | | | 12 | | ns |
| $t_{LRISE}^{(1)}$ | Low-side driver rise time | | | 15 | | ns |
| $t_{LFALL}^{(1)}$ | Low-side driver fall time | | | 10 | | ns |
| OVERCURRENT PROTECTION | | | | | | |
| $t_{PSSC(min)}^{(1)}$ | Minimum pulse time during short circuit | | | 250 | | ns |
| $t_{BLNKH}^{(1)}$ | Switch leading-edge blanking pulse time | | | 150 | | ns |
| V_{OCH} | OC threshold for high-side FET | $T_J = 25^{\circ}\text{C}$ | 360 | 450 | 580 | mV |
| I_{OCSET} | OCSET current source | $T_J = 25^{\circ}\text{C}$ | 9.5 | 10 | 10.5 | μA |
| $V_{LD-CLAMP}$ | Maximum clamp voltage at LDRV | | 260 | 340 | 400 | mV |
| V_{OCLOS} | OC comparator offset voltage for low-side FET | $T_J = 25^{\circ}\text{C}$ | -8 | | 8 | mV |
| $V_{OCLPRO}^{(1)}$ | Programmable OC range for low-side FET | $T_J = 25^{\circ}\text{C}$ | 12 | | 300 | mV |
| $V_{THTC}^{(1)}$ | OC threshold temperature coefficient (both high-side and low-side) | | | 3000 | | ppm |
| t_{OFF} | OC retry cycles on EN/SS pin | | | 4 | | Cycle |
| BOOT DIODE | | | | | | |
| V_{DFWD} | Bootstrap diode forward voltage | $I_{BOOT} = 5\text{ mA}$ | | 0.8 | | V |
| THERMAL SHUTDOWN | | | | | | |
| $T_{JSD}^{(1)}$ | Junction shutdown temperature | | | 145 | | $^{\circ}\text{C}$ |
| $T_{JSDH}^{(1)}$ | Hysteresis | | | 20 | | $^{\circ}\text{C}$ |

6.6 Typical Characteristics

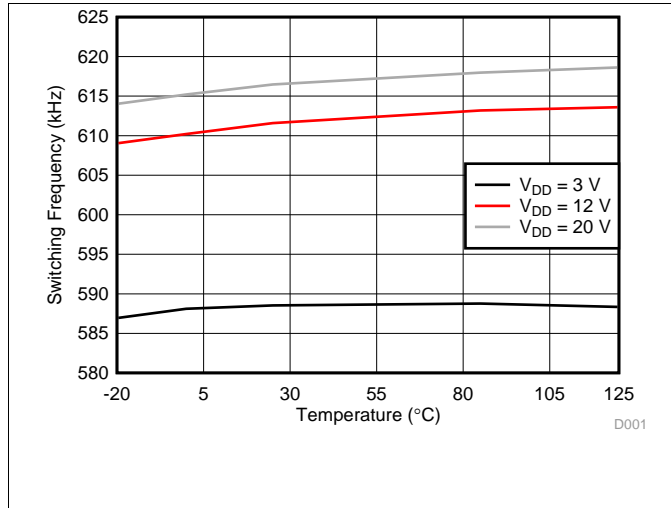


Figure 1. Switching Frequency vs Junction Temperature

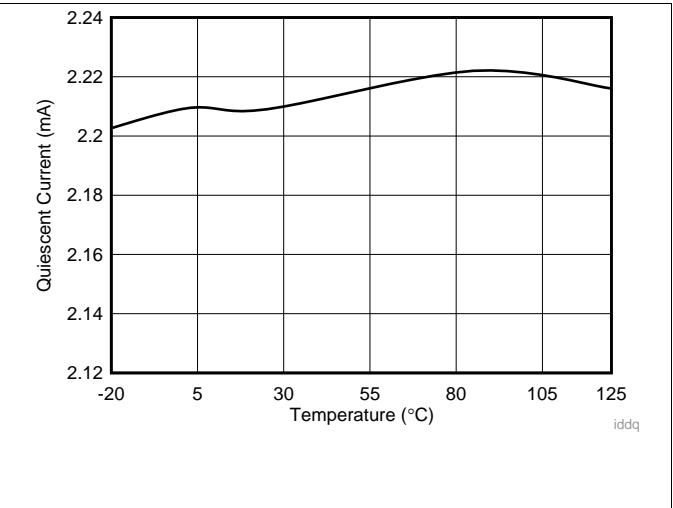


Figure 2. Quiescent Current vs Junction Temperature

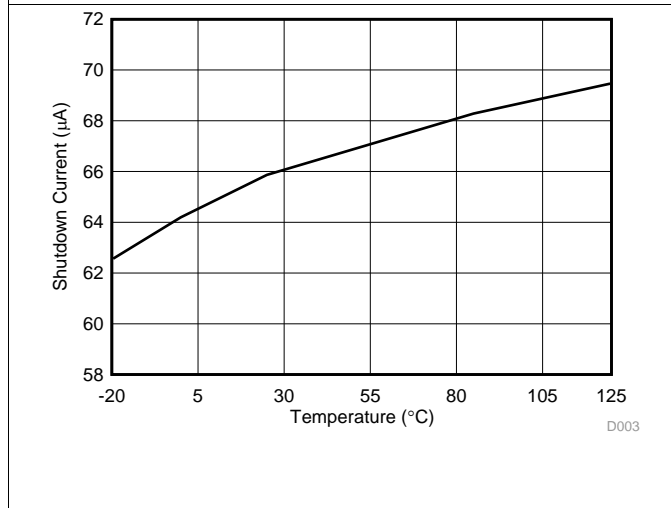


Figure 3. Shutdown Current vs Junction Temperature

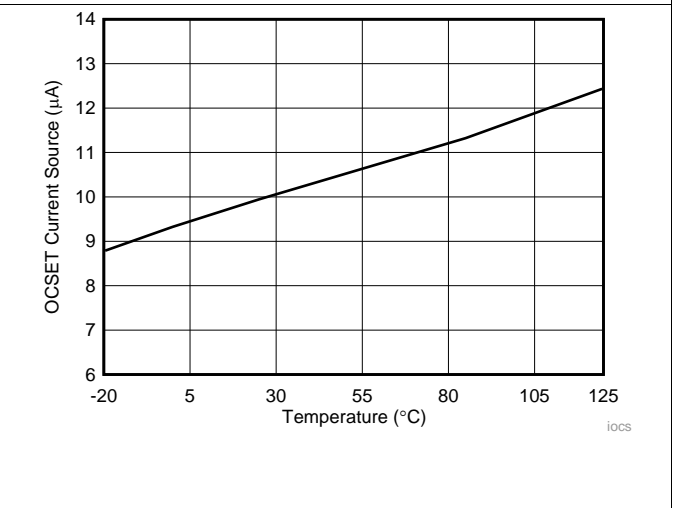


Figure 4. OCSET Current Source vs Junction Temperature

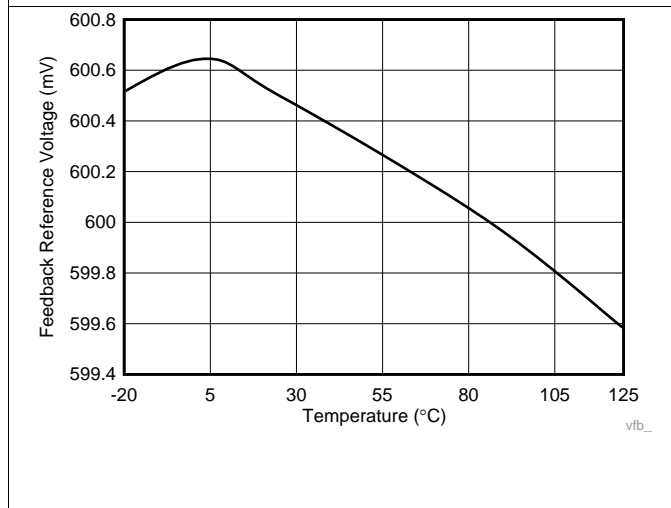


Figure 5. Feedback Reference Voltage vs Junction Temperature

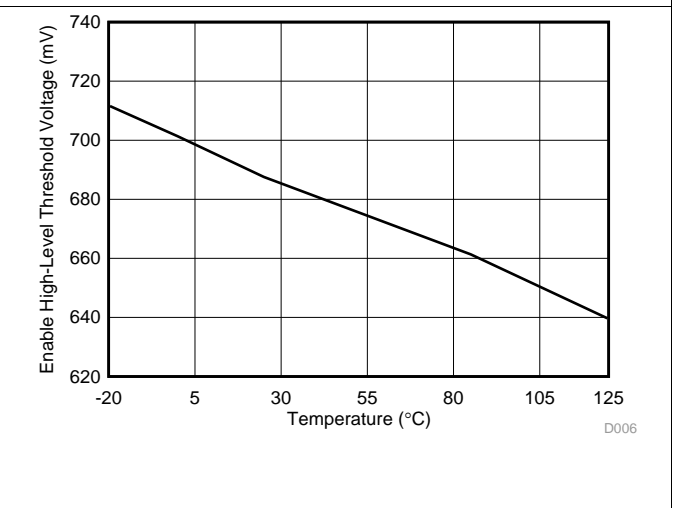


Figure 6. Enable High-Level Threshold Voltage vs Junction Temperature

Typical Characteristics (continued)

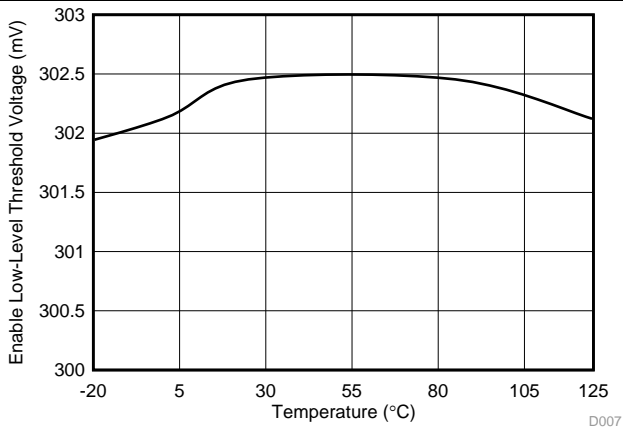


Figure 7. Enable Low-Level Threshold Voltage vs Junction Temperature

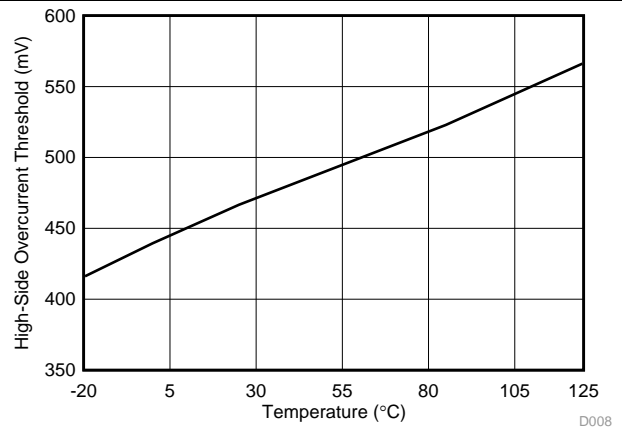


Figure 8. High-Side Overcurrent Threshold vs Junction Temperature

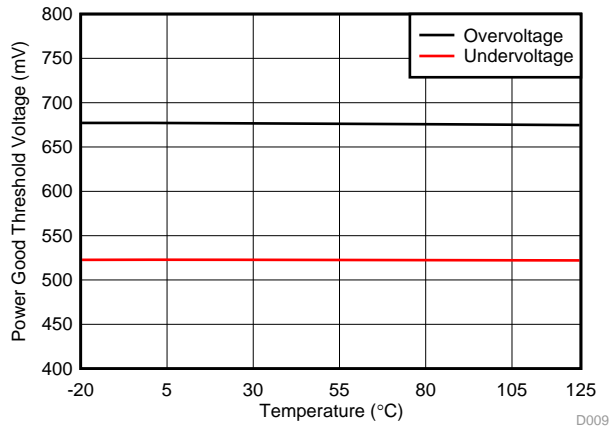


Figure 9. Power Good Threshold Voltage vs Junction Temperature

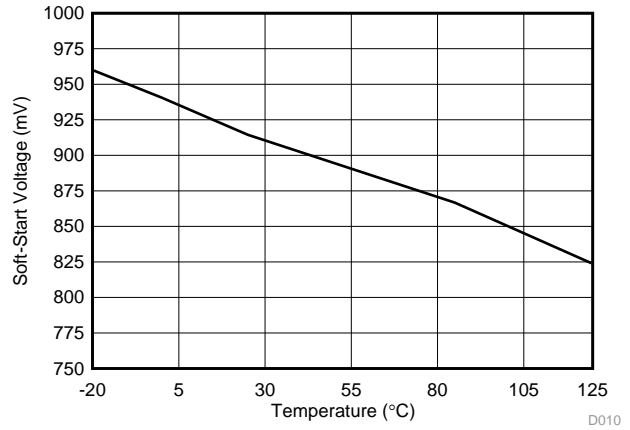


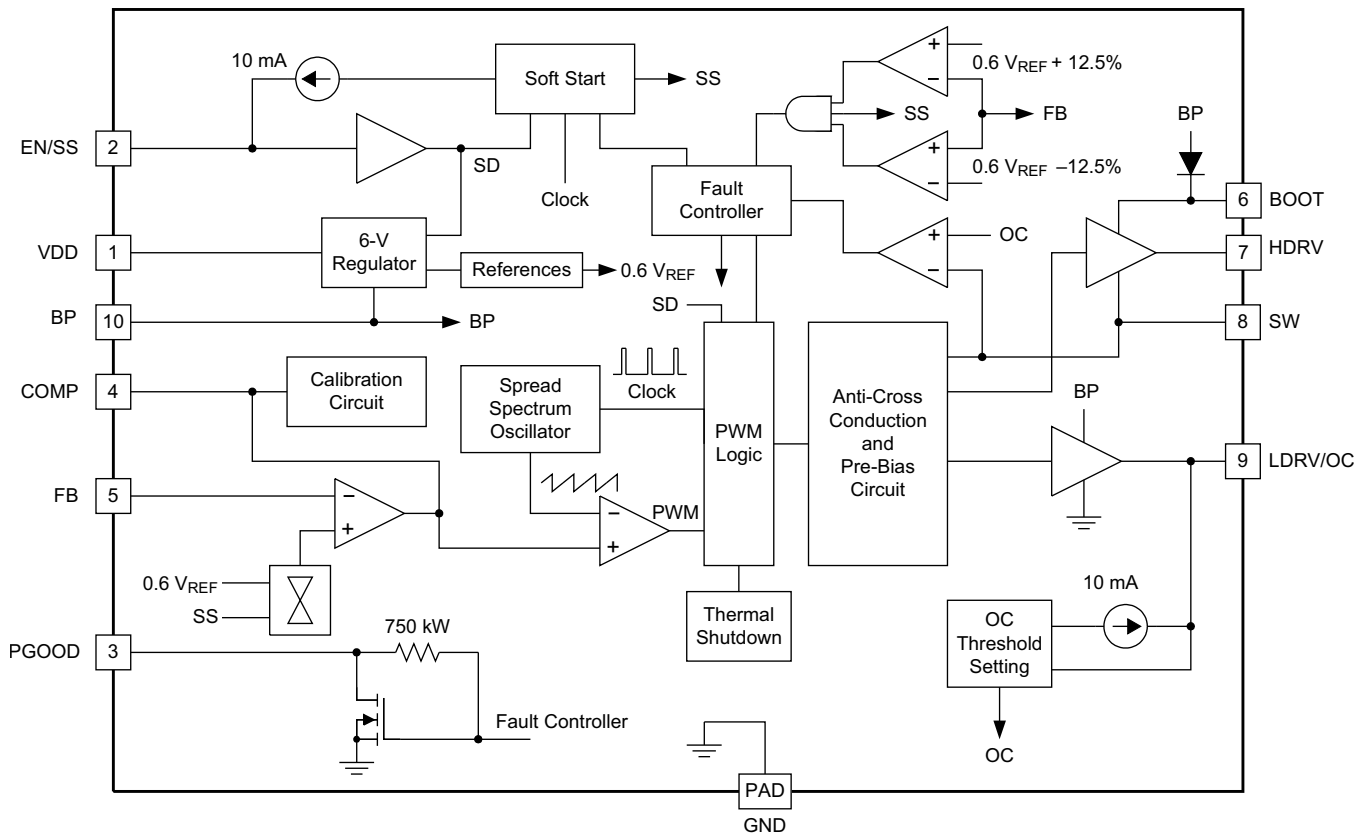
Figure 10. Soft-Start Voltage vs Junction Temperature

7 Detailed Description

7.1 Overview

The TPS40345 is a cost-optimized synchronous buck controller providing high-end features to construct high-performance DC–DC converters. Prebias capability eliminates concerns about damaging sensitive loads during start-up. Programmable overcurrent protection levels and hiccup overcurrent fault recovery maximize design flexibility and minimize power dissipation in the event of a prolonged output short. The frequency spread spectrum (FSS) feature reduces peak EMI noise by spreading the initial energy of each harmonic along a frequency band, thus giving a wider spectrum with lower amplitudes.

7.2 Functional Block Diagram



Copyright © 2017, Texas Instruments Incorporated

7.3 Feature Description

7.3.1 Voltage Reference

The 600-mV bandgap cell is internally connected to the noninverting input of the error amplifier. The reference voltage is trimmed with the error amplifier in a unity gain configuration to remove amplifier offset from the final regulation voltage. The 1.3% tolerance on the reference voltage allows the user to design a very accurate power supply.

Feature Description (continued)

7.3.2 Enable Functionality, Start-Up Sequence and Timing

After input power is applied, an internal current source of 40 μA starts to charge up the soft-start capacitor connected from EN/SS to GND. When the voltage across that capacitor increases to 0.7 V, it enables the internal BP regulator followed by a calibration. The total calibration time is about 1.9 ms. See Figure 11. During the calibration, the device performs in the following way. It disables the LDRV drive and injects an internal 10- μA current source to the resistor connected from LDRV to GND. The voltage developed across that resistor is then sampled and latched internally as the OCP trip level until one cycles the input or toggles the EN/SS.

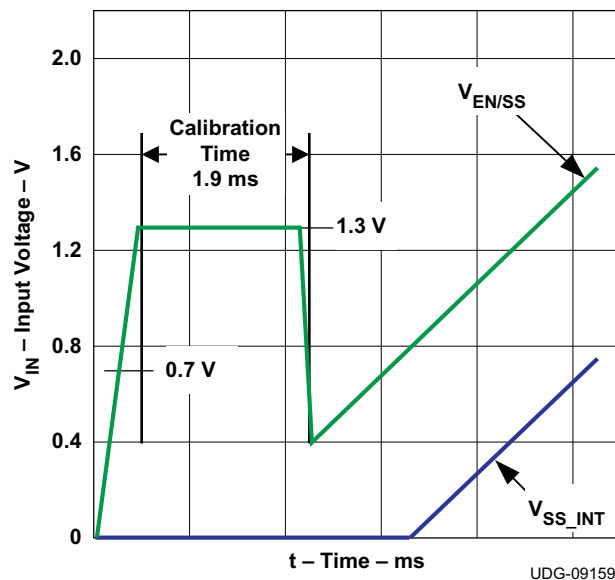


Figure 11. Start-Up Sequence and Timing

The voltage at EN/SS is internally clamped to 1.3 V before and/or during calibration to minimize the discharging time once calibration. The discharging current is from an internal current source of 140 μA and it pulls the voltage down to 0.4 V. The discharging current then initiates the soft-start by charging up the capacitor using an internal current source of 10 μA . The resulting voltage ramp on this pin is used as a second noninverting input to the error amplifier after an 800 mV (typical) downward level-shift; therefore, actual soft-start does not occur until the voltage at this pin reaches 800 mV.

If EN/SS is left floating, the controller starts automatically. EN/SS must be pulled down to less than 270 mV to ensure that the chip is in shutdown mode.

7.3.3 Soft-Start Time

The soft-start time of the TPS40345 is user programmable by selecting a single capacitor. The EN/SS pin sources 10 μA to charge this capacitor. The actual output ramp-up time is the amount of time that it takes for the 10 μA to charge the capacitor through a 600-mV range. There is some initial lag due to calibration and an offset (800 mV) from the actual EN/SS pin voltage to the voltage applied to the error amplifier.

The soft-start is done in a closed-loop fashion, meaning that the error amplifier controls the output voltage at all times during the soft-start period and the feedback loop is never open as occurs in duty cycle limit soft-start schemes. The error amplifier has two non-inverting inputs, one connected to the 600-mV reference voltage, and the other connected to the offset EN/SS pin voltage. The lower of these two voltages is what the error amplifier controls the FB pin. As the voltage on the EN/SS pin ramps up past approximately 1.4 V (800-mV offset voltage plus the 600 mV reference voltage), the 600-mV reference voltage becomes the dominant input and the converter has reached its final regulation voltage.

The capacitor required for a given soft-start ramp time for the output voltage is given by Equation 1.

$$C_{SS} = \left(\frac{I_{SS}}{V_{FB}} \right) \times t_{SS}$$

Feature Description (continued)

where

- C_{SS} is the required capacitance on the EN/SS pin. (F)
 - I_{SS} is the soft-start source current (10 μ A).
 - V_{FB} is the feedback reference voltage (0.6 V).
 - t_{SS} is the desired soft-start ramp time (s).
- (1)

7.3.4 Oscillator and Frequency Spread Spectrum (FSS)

The oscillator frequency is internally fixed. The TPS40345 operating frequency is 600 kHz.

Connecting a resistor with a value of 267 k Ω \pm 10% from BP to EN/SS enables the FSS feature. When the FSS is enabled, it spreads the internal oscillator frequency over a minimum 12% window using a 25-kHz modulation frequency with triangular profile. By modulating the switching frequency, side-bands are created. The emission power of the fundamental switching frequency and its harmonics is distributed into smaller pieces scattered around many sideband frequencies. The effect significantly reduces the peak EMI noise and makes it much easier for the resultant emission spectrum to pass EMI regulations.

7.3.5 Overcurrent Protection

Programmable OCP level at LDRV is from 6 mV to 150 mV at room temperature with 3000 ppm temperature coefficient to help compensate for changes in the low-side FET channel resistance as temperature increases. With a scale factor of 2, the actual trip point across the low-side FET is in the range of 12 mV to 300 mV. The accuracy of the internal current source is \pm 5%. Overall offset voltage, including the offset voltage of the internal comparator and the amplifier for scale factor of 2, is limited to \pm 8 mV.

Maximum clamp voltage at LDRV is 340 mV to avoid turning on the low-side FET during calibration and in a prebiased condition. The maximum clamp voltage is fixed and it does not change with temperature. If the voltage drop across R_{OCSET} reaches the 340-mV maximum clamp voltage during calibration (no R_{OCSET} resistor included), it disables OC protection. Once disabled, there is no low-side or high-side current sensing.

OCP level at HDRV is fixed at 450 mV with 3000-ppm temperature coefficient to help compensate for changes in the high-side FET channel resistance as temperature increases. OCP at HDRV provides pulse-by-pulse current limiting.

OCP sensing at LDRV is a true inductor valley current detection, using sample and hold. [Equation 2](#) can be used to calculate R_{OCSET} :

$$R_{OCSET} = \left(\frac{\left(I_{OUT(max)} - \left(\frac{I_{P-P}}{2} \right) \right) \times R_{DS(on)} - V_{OCLOS}}{2 \times I_{OCSET}} \right)$$

where

- I_{OCSET} is the internal current source.
 - V_{OCLOS} is the overall offset voltage.
 - I_{P-P} is the peak-to-peak inductor current.
 - $R_{DS(on)}$ is the drain to source ON-resistance of the low-side FET.
 - $I_{OUT(max)}$ is the trip point for OCP.
 - R_{OCSET} is the resistor used for setting the OCP level.
- (2)

To avoid overcurrent tripping in normal operating load range, calculate R_{OCSET} using [Equation 2](#) with:

- The maximum $R_{DS(ON)}$ at room temperature
- The lower limit of V_{OCLOS} (–8 mV) and the lower limit of I_{OCSET} (9.5 μ A) from the *Electrical Characteristics* table.
- The peak-to-peak inductor current I_{P-P} at minimum input voltage

Feature Description (continued)

Overcurrent is sensed across both the low-side FET and the high-side FET. If the voltage drop across either FET exceeds the OC threshold, a count increments one count. If no OC is detected on either FET, the fault counter decrements by one count. If three OC pulses are summed, a fault condition is declared which cycles the soft-start function in a hiccup mode. Hiccup mode consists of four dummy soft-start timeouts followed by a real one if overcurrent condition is encountered during normal operation, or five dummy soft-start timeouts followed by a real one if overcurrent condition occurs from the beginning during start. This cycle continues indefinitely until the fault condition is removed.

7.3.6 Drivers

The drivers for the external high-side and low-side MOSFETs can drive a gate-to-source voltage of V_{BP} . The LDRV driver for the low-side MOSFET switches between BP and GND, while the HDRV driver for the high-side MOSFET is referenced to SW and switches between BOOT and SW. The drivers have nonoverlapping timing that is governed by an adaptive delay circuit to minimize body diode conduction in the synchronous rectifier.

7.3.7 Prebias Start-Up

The TPS40345 contains a circuit to prevent current from being pulled from the output during start-up in the condition the output is prebiased. There are no PWM pulses until the internal soft-start voltage rises above the error amplifier input (FB pin), if the output is prebiased. Once the soft-start voltage exceeds the error amplifier input, the controller slowly initiates synchronous rectification by starting the synchronous rectifier with a narrow on time. The controller then increments that on time on a cycle-by-cycle basis until it coincides with the time dictated by $(1-D)$, where D is the duty cycle of the converter. This approach prevents the sinking of current from a prebiased output, and ensures the output voltage start-up and ramp to regulation is smooth and controlled.

7.3.8 Power Good

The TPS40345 provides an indication that output is good for the converter. This is an open-drain signal and pulls low when any condition exists that would indicate that the output of the supply might be out of regulation. These conditions include the following:

- V_{FB} is more than $\pm 12.5\%$ from nominal.
- Soft-start is active.
- A short-circuit condition has been detected.

NOTE

When there is no power to the device, PGOOD is not able to pull close to GND if an auxiliary supply is used for the power good indication. In this case, a built-in resistor connected from drain to gate on the PGOOD pulldown device makes the PGOOD pin look approximately like a diode to GND.

7.3.9 Thermal Shutdown

If the junction temperature of the device reaches the thermal shutdown limit of 145°C , the PWM and the oscillator are turned off and HDRV and LDRV are driven low. When the junction cools to the required level (125°C typical), the PWM initiates soft-start as during a normal power-up cycle.

7.4 Device Functional Modes

7.4.1 Modes of Operation

7.4.1.1 UVLO

In UVLO, VDD is less than UVLO_ON, the BP6 regulator is off, and the HDRV and LDRV are held low by internal passive discharge resistors.

7.4.1.2 Disable

Disable is forced by holding SS/EN below 0.4 V. In disable, the BP6 regulator is off, and both HDRV and LDRV are held low by passive discharge resistors.

Typical Applications (continued)

8.2.1 Design Requirements

For this example, follow the design parameters listed in [Table 1](#).

Table 1. Design Example Electrical Characteristics

| PARAMETER | | TEST CONDITIONS | MIN | TYP | MAX | UNIT |
|-----------------------|----------------------------------|-------------------------------|-------|-----|-------|-----------------|
| V _{IN} | Input voltage | | 8 | | 14 | V |
| V _{INripple} | Input ripple | I _{OUT} = 20 A | | | 0.5 | V |
| V _{OUT} | Output voltage | 0 A ≤ I _{OUT} ≤ 20 A | 1.164 | 1.2 | 1.236 | V |
| | Line regulation | 8 V ≤ V _{IN} ≤ 14 V | | | 0.5% | |
| | Load regulation | 0 A ≤ I _{OUT} ≤ 20 A | | | 0.5% | |
| V _{RIPPLE} | Output ripple | I _{OUT} = 20 A | | | 36 | mV |
| V _{OVER} | Output overshoot | 5 A ≤ I _{OUT} ≤ 15 A | | 100 | | mV |
| V _{UNDER} | Output undershoot | 5 A ≤ I _{OUT} ≤ 15 A | | 100 | | mV |
| I _{OUT} | Output current | 8 V ≤ V _{IN} ≤ 14 V | 0 | | 20 | A |
| t _{SS} | Soft-start time | V _{IN} = 12 V | | 1.5 | | ms |
| I _{SCP} | Short-circuit current trip point | | 26 | | | A |
| f _{SW} | Switching frequency | | | 600 | | kHz |
| | Size | | | | 1.5 | in ² |

8.2.2 Detailed Design Procedure

8.2.2.1 Selecting the Switching Frequency

To achieve the small size for this design the TPS40345, with $f_{SW} = 600$ kHz, is selected for minimal external component size.

8.2.2.2 Inductor Selection (L1)

Synchronous buck power inductors are typically sized for approximately 30% peak-to-peak ripple current (I_{RIPPLE}).

Given this target ripple current, the required inductor size can be calculated in [Equation 3](#).

$$L \approx \frac{V_{IN(max)} - V_{OUT}}{0.3 \times I_{OUT}} \times \frac{V_{OUT}}{V_{IN(max)}} \times \frac{1}{F_{SW}} = \frac{14V - 1.2V}{0.3 \times 20A} \times \frac{1.2V}{14V} \times \frac{1}{600kHz} = 305nH \quad (3)$$

Selecting a standard 300-nH inductor value, solve for I_{RIPPLE} = 6 A

The RMS current through the inductor is approximated by [Equation 4](#).

$$I_{Lrms} = \sqrt{I_{Lavg}^2 + \frac{1}{12} I_{RIPPLE}^2} = \sqrt{I_{OUT}^2 + \frac{1}{12} I_{RIPPLE}^2} = \sqrt{20^2 + \frac{1}{12} 6^2} = 20.07 A \quad (4)$$

8.2.2.3 Output Capacitor Selection (C12)

The selection of the output capacitor is typically driven by the output transient response. [Equation 5](#) and [Equation 6](#) overestimate the voltage deviation to account for delays in the loop bandwidth and can be used to determine the required output capacitance.

$$V_{OVER} < \frac{I_{TRAN}}{C_{OUT}} \times \Delta T = \frac{I_{TRAN}}{C_{OUT}} \times \frac{I_{TRAN} \times L}{V_{OUT}} = \frac{I_{TRAN}^2 \times L}{V_{OUT} \times C_{OUT}} \quad (5)$$

$$V_{UNDER} < \frac{I_{TRAN}}{C_{OUT}} \times \Delta T = \frac{I_{TRAN}}{C_{OUT}} \times \frac{I_{TRAN} \times L}{V_{IN} - V_{OUT}} = \frac{I_{TRAN}^2 \times L}{(V_{IN} - V_{OUT}) \times C_{OUT}} \quad (6)$$

If $V_{IN(min)} > 2 \times V_{OUT}$, use overshoot ([Equation 5](#)) to calculate minimum output capacitance. If $V_{IN(min)} < 2 \times V_{OUT}$, use undershoot ([Equation 6](#)) to calculate minimum output capacitance.

$$C_{OUT(MIN)} = \frac{I_{TRAN(MAX)}^2 \times L}{(V_{OUT}) \times V_{OVER}} = \frac{10^2 \times 300nH}{1.2 \times 100mV} = 250\mu F \quad (7)$$

With a minimum capacitance, the maximum allowable ESR is determined by the maximum ripple voltage and is approximated by [Equation 8](#).

$$ESR_{max} = \frac{V_{RIPPLE(Total)} - V_{RIPPLE(CAP)}}{I_{RIPPLE}} = \frac{V_{RIPPLE(total)} - \left(\frac{I_{RIPPLE}}{8 \times C_{OUT} \times F_{SW}} \right)}{I_{RIPPLE}} = \frac{36mV - \left(\frac{6A}{8 \times 250\mu F \times 600kHz} \right)}{6A} = 5.2m\Omega \quad (8)$$

Two 47- μ F and one 220- μ F capacitors are selected to provide more than 250 μ F of minimum capacitance and 5.2 m Ω of ESR.

8.2.2.4 Peak Current Rating of Inductor

With output capacitance, it is possible to calculate the charge current during start-up and determine the minimum saturation current rating for the inductor. The start-up charging current is approximated by [Equation 9](#).

$$I_{CHARGE} = \frac{V_{OUT} \times C_{OUT}}{T_{SS}} = \frac{1.2V(2 \times 47\mu F + 220\mu F)}{1.5ms} = 0.251A \quad (9)$$

$$I_{L_PEAK} = I_{OUT(max)} + \frac{1}{2} I_{RIPPLE} + I_{CHARGE} = 20A + \frac{1}{2} \times 6A + 0.2512A = 23.25A \quad (10)$$

Table 2. Inductor Requirements

| PARAMETER | | VALUE | UNIT |
|---------------|----------------------------------|-------|------|
| L | Inductance | 300 | nH |
| $I_{L(rms)}$ | RMS current (thermal rating) | 20.07 | A |
| $I_{L(peak)}$ | Peak current (saturation rating) | 23.25 | A |

8.2.2.5 Input Capacitor Selection (C8)

The input voltage ripple is divided between capacitance and ESR. For this design $V_{RIPPLE(cap)} = 150$ mV and $V_{RIPPLE(esr)} = 150$ mV. The minimum capacitance and maximum ESR are estimated by [Equation 11](#).

$$C_{IN(min)} = \frac{I_{LOAD} \times V_{OUT}}{V_{RIPPLE(CAP)} \times V_{IN} \times F_{SW}} = \frac{20 \times 1.2V}{150mV \times 8V \times 600kHz} = 33.3\mu F \quad (11)$$

$$ESR_{MAX} = \frac{V_{RIPPLE(ESR)}}{I_{LOAD} + \frac{1}{2} I_{RIPPLE}} = \frac{150mV}{23A} = 6.5m\Omega \quad (12)$$

The RMS current in the input capacitors is estimated by [Equation 13](#).

$$I_{RMS_CIN} = I_{LOAD} \times \sqrt{D \times (1-D)} = 20A \times \sqrt{0.15 \times (1-0.15)} = 7.14 Arms \quad (13)$$

Three 1210, 10- μ F, 25-V, X5R ceramic capacitors are selected. Higher voltage capacitors are selected to minimize capacitance loss at the DC bias voltage to ensure the capacitors allow sufficient capacitance at the working voltage.

8.2.2.6 MOSFET Switch Selection (Q1 and Q2)

Reviewing available TI NexFET MOSFETs using the TI NexFET MOSFET selection tool, the CSD16410Q5A and CSD16321Q5 5-mm \times 6-mm MOSFETs are selected.

These two FETs have maximum total gate charges of 5 nC and 10 nC, respectively.

8.2.2.7 Bootstrap Capacitor (C6)

To ensure proper charging of the high-side FET gate, limit the ripple voltage on the boost capacitor to less than 50 mV.

$$C_{Boost} = 20 \times Q_{G1} = 20 \times 5nC = 100nF \quad (14)$$

8.2.2.8 VDD Bypass Capacitor (C7)

Per this TPS40345 data sheet, select a 1-uF X5R or better ceramic bypass capacitor for VDD.

8.2.2.9 BP Bypass Capacitor (C5)

Per the TPS40345 data sheet, a minimum 1-uF ceramic capacitance is required to stabilize the BP regulator. To limit regulator noise to less than 10 mV, the value of the bypass capacitor is calculated in [Equation 15](#).

$$C_{BP} = 100 \times \text{MAX}(Q_{G1}, Q_{G2}) \quad (15)$$

Because Q2 is larger than Q1, and the total gate charge of Q2 is 10 nC, a BP capacitor of 1 μF is calculated. A standard value of 1 μF is selected to limit noise on the BP regulator.

8.2.2.10 Short-Circuit Protection (R11)

The TPS40345 uses the negative drop across the low-side FET at the end of the OFF-time to measure the inductor current. Allowing for 30% over maximum load and 20% rise in $R_{DS(on)Q1}$ for self-heating, the voltage drop across the low-side FET at current limit is given by [Equation 16](#).

$$V_{OC} = (1.3 \times I_{LOAD} - \frac{1}{2} I_{ripple}) \times 1.2 \times R_{DS(on)Q2} = (1.3 \times 20 \text{ A} - \frac{1}{2} 6 \text{ A}) \times 1.2 \times 4.6 \text{ m}\Omega = 127 \text{ mV} \quad (16)$$

The TPS40345 internal temperature coefficient helps compensate for the MOSFET's $R_{DS(on)}$ temperature coefficient, so the current limit programming resistor is selected by [Equation 17](#).

$$R_{CS} = \frac{V_{OC} - V_{OCLOS(min)}}{2 \times I_{OCSET(min)}} = \frac{127 \text{ mV} - (-8 \text{ mV})}{2 \times 9.5 \mu\text{A}} = 7.1 \text{ k}\Omega \quad (17)$$

8.2.2.11 Feedback Divider (R4, R5)

The TPS40345 controller uses a full operational amplifier with an internally fixed 0.6-V reference. R4 is selected between 10 k Ω and 50 k Ω for a balance of feedback current and noise immunity. With R4 set to 10 k Ω , The output voltage is programmed with a resistor divider given by [Equation 18](#).

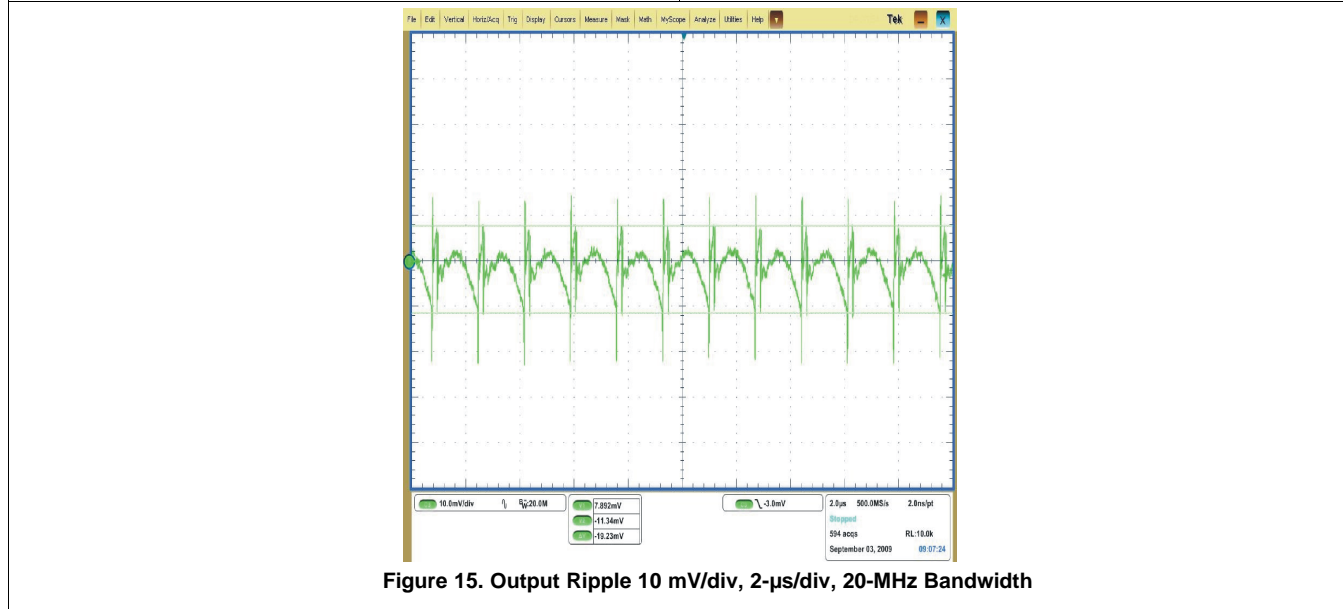
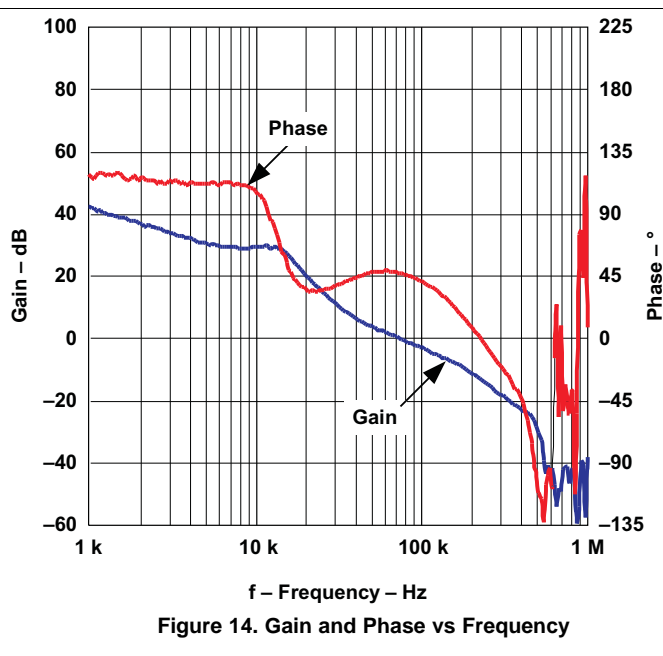
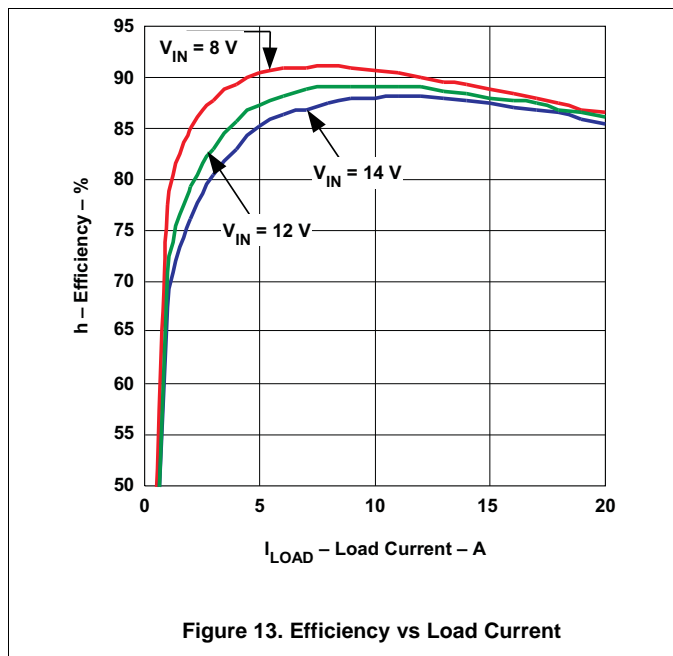
$$R7 = \frac{V_{FB} \times R4}{V_{OUT} - V_{FB}} = \frac{0.600 \text{ V} \times 10.0 \text{ k}\Omega}{1.2 \text{ V} - 0.600 \text{ V}} = 10 \text{ k}\Omega \quad (18)$$

8.2.2.12 Compensation: (C2, C3, C4, R3, R6)

Using the TPS40k Loop Stability Tool for 100-kHz bandwidth and 60° phase margin with a R4 value of 10.0 k Ω , the following values are returned.

- C4 = 680 pF
- C5 = 100 pF
- C6 = 680 pF
- R1 = 10 k Ω
- R2 = 1.5 k Ω

8.2.3 Application Curves



9 Power Supply Recommendations

The TPS40345 device is designed to operate from an input voltage supply between 3 V and 20 V. This input supply must remain within the input voltage supply range. This supply must be well regulated.

10 Layout

10.1 Layout Guidelines

- For MOSFET or power block layout, follow the layout recommendations provided for the MOSFET or power block selected.
- Connect VDD to VIN as close as possible to the drain connection of the high-side FET to avoid introducing additional drop, which could trigger short-circuit protection.
- Place VDD and BP to GND capacitors within 2 mm of the device and connected to the thermal pad (GND).
- Connect the FB to GND resistor to the thermal tab (GND) with a minimum 10-mil wide trace.
- Place VOUT to FB resistor within 2 mm of the FB pin.
- Connect the EN/SS-to-GND capacitor to the thermal tab (GND) with a minimum 10-mil-wide trace. It may share this trace with FB to GND.
- If a BJT or MOSFET is used to disable EN/SS, place it within 5 mm of the device.
- If a COMP to GND resistor is used, place it within 5 mm of the device.
- All COMP and FB traces should be kept minimum line width and as short as possible to minimize noise coupling.
- EN/SS should not be routed more than 20 mm from the device.
- If multiple layers are used, extend GND under all components connected to FB, COMP and EN/SS to reduce noise sensitivity.
- HDRV and LDRV must provide short, low inductance paths of 5 mm or less to the gates of the MOSFETs or power block.
- Place no more than 1 Ω of resistance between HDRV or LDRV and their MOSFET or power block gate pins.
- LDRV / OC to GND current limit programming resistor may be placed on the far side of the MOSFET if necessary to ensure a short connection from LDRV to the gate of the low-side MOSFET.
- Place the BOOT to SW resistor and capacitor within 4 mm of the device using a minimum of 10-mil-wide trace. The full width of the component pads are preferred for trace widths if design rules allow.
- If via must be used between the HDRV, SW and LDRV pins and their respective MOSFET or power block connections, use a minimum of two vias to reduce parasitic inductance
- Refer to the land pattern data for the preferred layout of thermal vias within the thermal pad.
- TI recommends extending the top-layer copper area of the thermal pad (GND) beyond the package a minimum 3 mm between pins 1 and 10 and 5 and 6 to improve thermal resistance to ambient of the device.

10.2 Layout Example

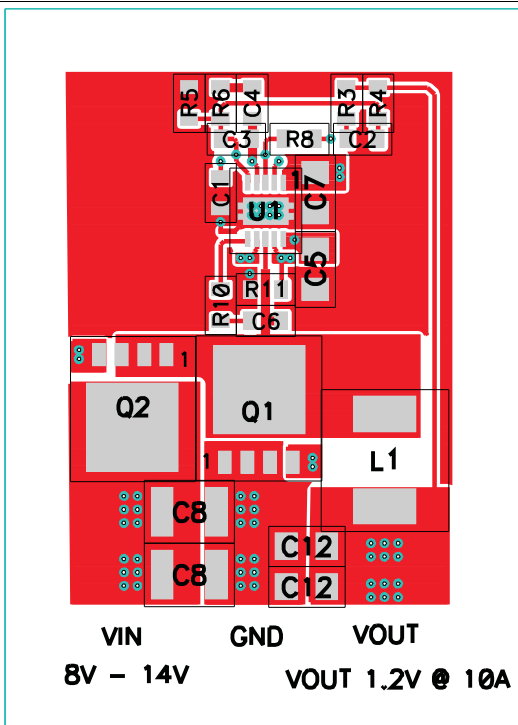


Figure 16. Top Copper With Components

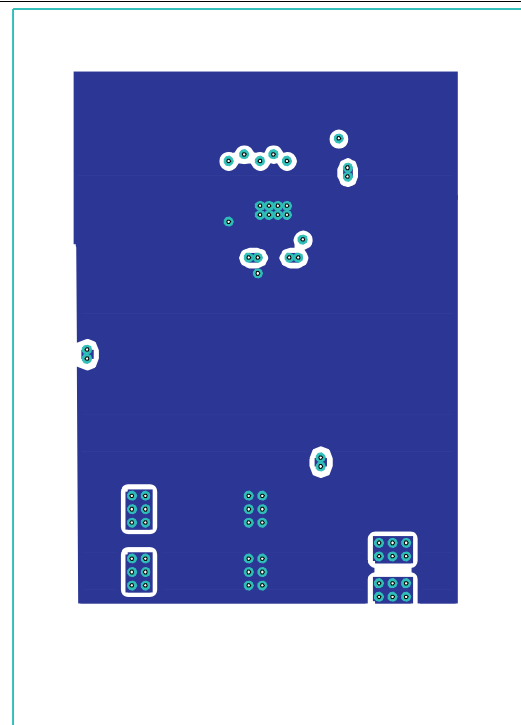


Figure 17. Top Internal Copper Layout

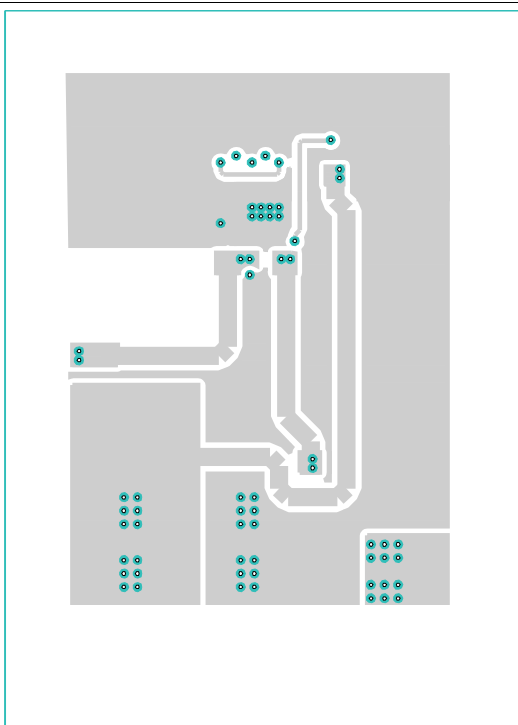


Figure 18. Bottom Internal Copper Layout

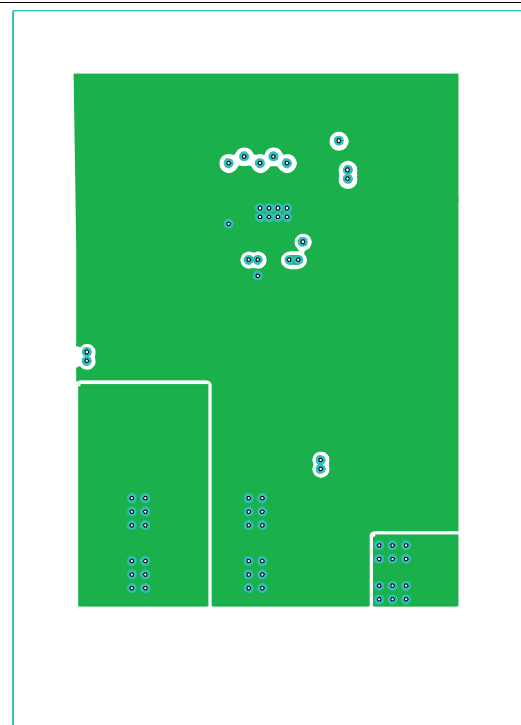


Figure 19. Bottom Copper Layer

11 デバイスおよびドキュメントのサポート

11.1 デバイス・サポート

11.1.1 デベロッパー・ネットワークの製品に関する免責事項

デベロッパー・ネットワークの製品またはサービスに関するTIの出版物は、単独またはTIの製品、サービスと一緒に提供される場合に関係なく、デベロッパー・ネットワークの製品またはサービスの適合性に関する是認、デベロッパー・ネットワークの製品またはサービスの是認の表明を意味するものではありません。

11.2 ドキュメントのサポート

11.2.1 関連資料

以下の参考文献、設計ツール、および設計ソフトウェアを含む他の参考資料へのリンクが、<http://power.ti.com>で提供されています。

1. PowerPAD™に関する詳細情報はアプリケーション・ブリーフ(SLMA002およびSLMA004)に記載されています。
2. 『スイッチモード電源におけるバック電力段について』
3. 『低電圧DC/DCコンバータの内部構造』、2002セミナー・シリーズ、SEM1500トピック5
4. 『安定した制御ループの設計』、2001セミナー・シリーズ、SEM1400

11.3 ドキュメントの更新通知を受け取る方法

ドキュメントの更新についての通知を受け取るには、ti.comのデバイス製品フォルダを開いてください。右上の隅にある「通知を受け取る」をクリックして登録すると、変更されたすべての製品情報に関するダイジェストを毎週受け取れます。変更の詳細については、修正されたドキュメントに含まれている改訂履歴をご覧ください。

11.4 コミュニティ・リソース

The following links connect to TI community resources. Linked contents are provided "AS IS" by the respective contributors. They do not constitute TI specifications and do not necessarily reflect TI's views; see TI's [Terms of Use](#).

TI E2E™オンライン・コミュニティ TIのE2E (*Engineer-to-Engineer*) コミュニティ。エンジニア間の共同作業を促進するために開設されたものです。e2e.ti.comでは、他のエンジニアに質問し、知識を共有し、アイデアを検討して、問題解決に役立てることができます。

設計サポート TIの設計サポート役に立つE2Eフォーラムや、設計サポート・ツールをすばやく見つけることができます。技術サポート用の連絡先情報も参照できます。

11.5 商標

E2E is a trademark of Texas Instruments.
All other trademarks are the property of their respective owners.

11.6 静電気放電に関する注意事項



これらのデバイスは、限定的なESD(静電破壊)保護機能を内蔵しています。保存時または取り扱い時は、MOSゲートに対する静電破壊を防止するために、リード線同士をショートさせておくか、デバイスを導電フォームに入れる必要があります。

11.7 Glossary

SLYZ022 — TI Glossary.

This glossary lists and explains terms, acronyms, and definitions.

12 メカニカル、パッケージ、および注文情報

以降のページには、メカニカル、パッケージ、および注文に関する情報が記載されています。この情報は、そのデバイスについて利用可能な最新のデータです。このデータは予告なく変更されることがあり、ドキュメントが改訂される場合もあります。本データシートのブラウザ版を使用されている場合は、画面左側の説明をご覧ください。

PACKAGING INFORMATION

| Orderable part number | Status (1) | Material type (2) | Package Pins | Package qty Carrier | RoHS (3) | Lead finish/ Ball material (4) | MSL rating/ Peak reflow (5) | Op temp (°C) | Part marking (6) |
|------------------------------|---------------|----------------------|-----------------|-----------------------|-------------|--------------------------------------|-----------------------------------|--------------|---------------------|
| TPS40345DRCR | Active | Production | VSON (DRC) 10 | 3000 LARGE T&R | Yes | NIPDAUAG | Level-2-260C-1 YEAR | -20 to 85 | 0345 |
| TPS40345DRCR.A | Active | Production | VSON (DRC) 10 | 3000 LARGE T&R | Yes | NIPDAUAG | Level-2-260C-1 YEAR | -20 to 85 | 0345 |
| TPS40345DRCT | Active | Production | VSON (DRC) 10 | 250 SMALL T&R | Yes | NIPDAUAG | Level-2-260C-1 YEAR | -20 to 85 | 0345 |
| TPS40345DRCT.A | Active | Production | VSON (DRC) 10 | 250 SMALL T&R | Yes | NIPDAUAG | Level-2-260C-1 YEAR | -20 to 85 | 0345 |

(1) **Status:** For more details on status, see our [product life cycle](#).

(2) **Material type:** When designated, preproduction parts are prototypes/experimental devices, and are not yet approved or released for full production. Testing and final process, including without limitation quality assurance, reliability performance testing, and/or process qualification, may not yet be complete, and this item is subject to further changes or possible discontinuation. If available for ordering, purchases will be subject to an additional waiver at checkout, and are intended for early internal evaluation purposes only. These items are sold without warranties of any kind.

(3) **RoHS values:** Yes, No, RoHS Exempt. See the [TI RoHS Statement](#) for additional information and value definition.

(4) **Lead finish/Ball material:** Parts may have multiple material finish options. Finish options are separated by a vertical ruled line. Lead finish/Ball material values may wrap to two lines if the finish value exceeds the maximum column width.

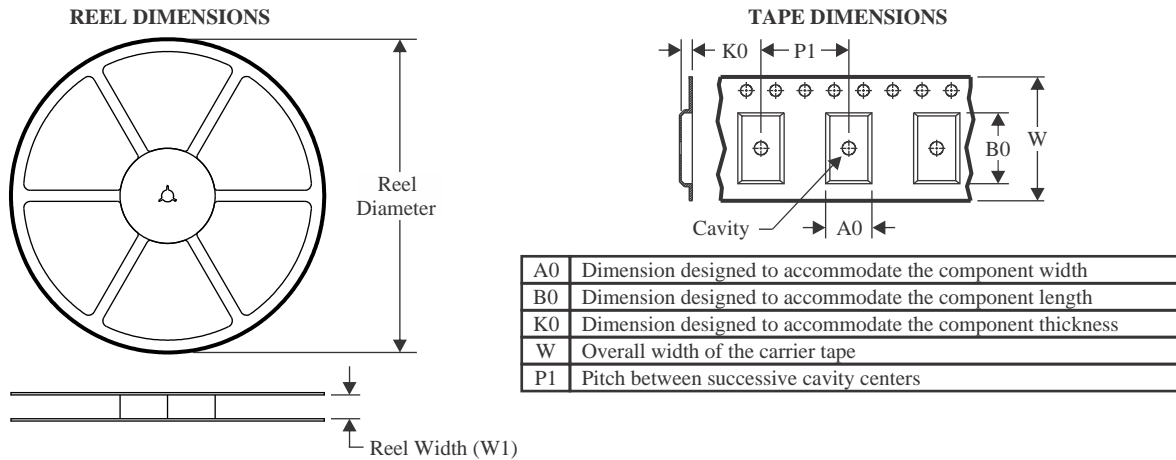
(5) **MSL rating/Peak reflow:** The moisture sensitivity level ratings and peak solder (reflow) temperatures. In the event that a part has multiple moisture sensitivity ratings, only the lowest level per JEDEC standards is shown. Refer to the shipping label for the actual reflow temperature that will be used to mount the part to the printed circuit board.

(6) **Part marking:** There may be an additional marking, which relates to the logo, the lot trace code information, or the environmental category of the part.

Multiple part markings will be inside parentheses. Only one part marking contained in parentheses and separated by a "~" will appear on a part. If a line is indented then it is a continuation of the previous line and the two combined represent the entire part marking for that device.

Important Information and Disclaimer: The information provided on this page represents TI's knowledge and belief as of the date that it is provided. TI bases its knowledge and belief on information provided by third parties, and makes no representation or warranty as to the accuracy of such information. Efforts are underway to better integrate information from third parties. TI has taken and continues to take reasonable steps to provide representative and accurate information but may not have conducted destructive testing or chemical analysis on incoming materials and chemicals. TI and TI suppliers consider certain information to be proprietary, and thus CAS numbers and other limited information may not be available for release.

In no event shall TI's liability arising out of such information exceed the total purchase price of the TI part(s) at issue in this document sold by TI to Customer on an annual basis.

TAPE AND REEL INFORMATION

QUADRANT ASSIGNMENTS FOR PIN 1 ORIENTATION IN TAPE


*All dimensions are nominal

| Device | Package Type | Package Drawing | Pins | SPQ | Reel Diameter (mm) | Reel Width W1 (mm) | A0 (mm) | B0 (mm) | K0 (mm) | P1 (mm) | W (mm) | Pin1 Quadrant |
|--------------|--------------|-----------------|------|------|--------------------|--------------------|---------|---------|---------|---------|--------|---------------|
| TPS40345DRCR | VSON | DRC | 10 | 3000 | 330.0 | 12.4 | 3.3 | 3.3 | 1.1 | 8.0 | 12.0 | Q2 |
| TPS40345DRCT | VSON | DRC | 10 | 250 | 180.0 | 12.5 | 3.3 | 3.3 | 1.1 | 8.0 | 12.0 | Q2 |

TAPE AND REEL BOX DIMENSIONS


*All dimensions are nominal

| Device | Package Type | Package Drawing | Pins | SPQ | Length (mm) | Width (mm) | Height (mm) |
|--------------|--------------|-----------------|------|------|-------------|------------|-------------|
| TPS40345DRCR | VSON | DRC | 10 | 3000 | 338.0 | 355.0 | 35.0 |
| TPS40345DRCT | VSON | DRC | 10 | 250 | 205.0 | 200.0 | 33.0 |

GENERIC PACKAGE VIEW

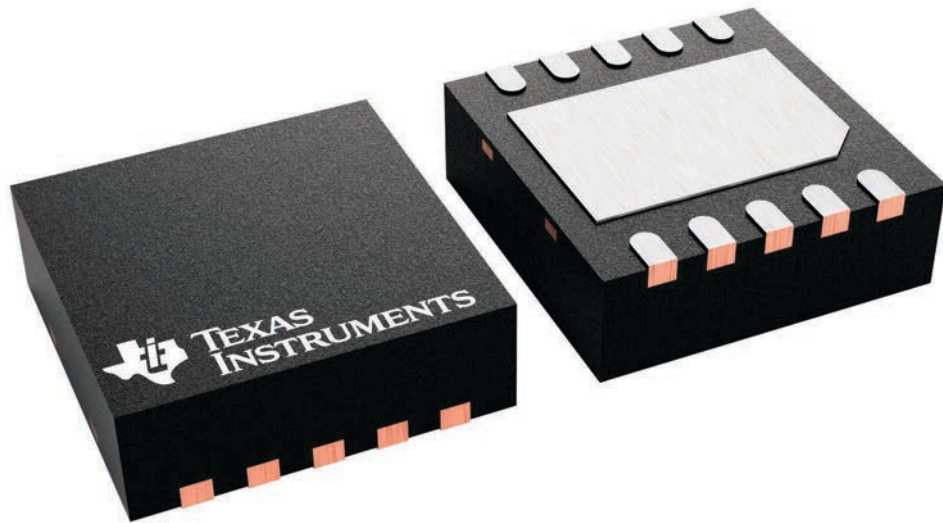
DRC 10

VSON - 1 mm max height

3 x 3, 0.5 mm pitch

PLASTIC SMALL OUTLINE - NO LEAD

This image is a representation of the package family, actual package may vary.
Refer to the product data sheet for package details.



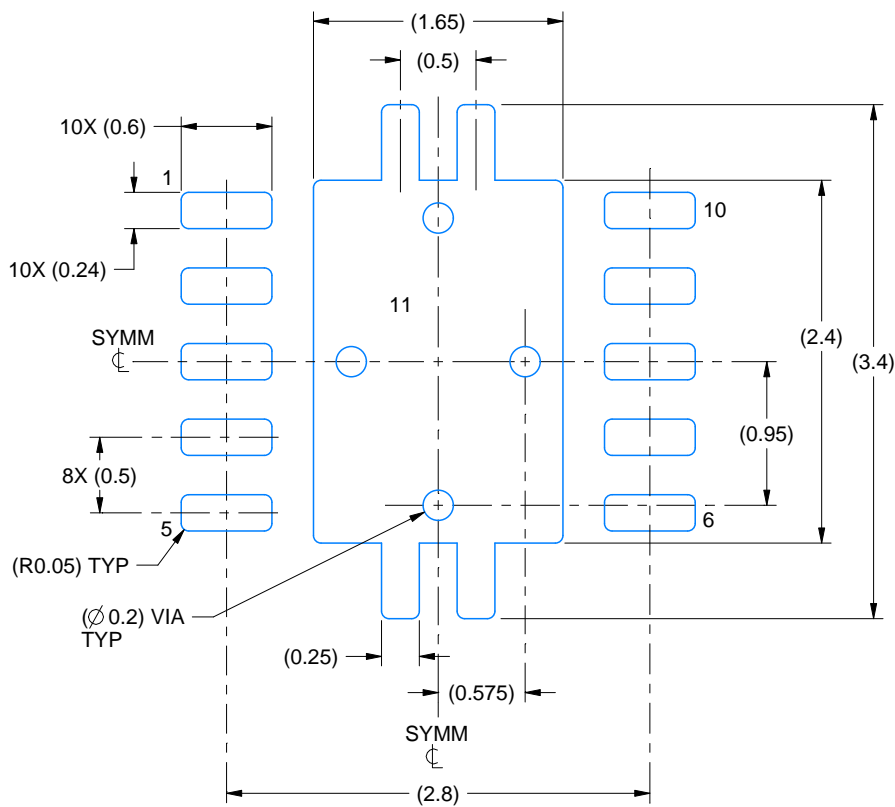
4226193/A

EXAMPLE BOARD LAYOUT

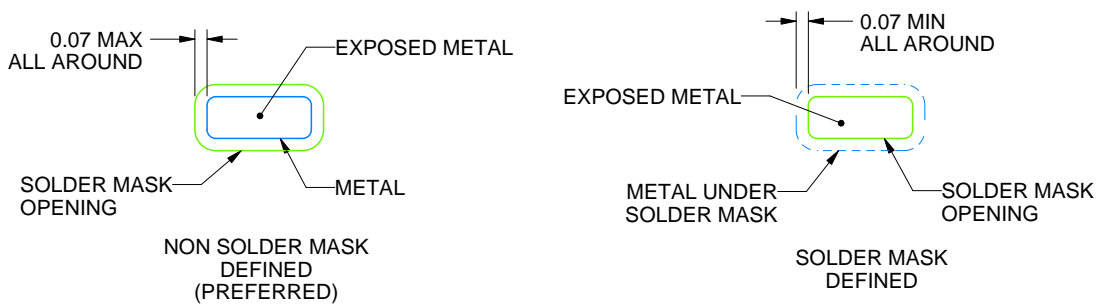
DRC0010J

VSON - 1 mm max height

PLASTIC SMALL OUTLINE - NO LEAD



LAND PATTERN EXAMPLE
EXPOSED METAL SHOWN
SCALE:20X



SOLDER MASK DETAILS

4218878/B 07/2018

NOTES: (continued)

4. This package is designed to be soldered to a thermal pad on the board. For more information, see Texas Instruments literature number SLUA271 (www.ti.com/lit/sluea271).
5. Vias are optional depending on application, refer to device data sheet. If any vias are implemented, refer to their locations shown on this view. It is recommended that vias under paste be filled, plugged or tented.

重要なお知らせと免責事項

TI は、技術データと信頼性データ (データシートを含みます)、設計リソース (リファレンス デザインを含みます)、アプリケーションや設計に関する各種アドバイス、Web ツール、安全性情報、その他のリソースを、欠陥が存在する可能性のある「現状のまま」提供しており、商品性および特定目的に対する適合性の黙示保証、第三者の知的財産権の非侵害保証を含むいかなる保証も、明示的または黙示的にかかわらず拒否します。

これらのリソースは、TI 製品を使用する設計の経験を積んだ開発者への提供を意図したものです。(1) お客様のアプリケーションに適した TI 製品の選定、(2) お客様のアプリケーションの設計、検証、試験、(3) お客様のアプリケーションに該当する各種規格や、その他のあらゆる安全性、セキュリティ、規制、または他の要件への確実な適合に関する責任を、お客様のみが単独で負うものとし、

上記の各種リソースは、予告なく変更される可能性があります。これらのリソースは、リソースで説明されている TI 製品を使用するアプリケーションの開発の目的でのみ、TI はその使用をお客様に許諾します。これらのリソースに関して、他の目的で複製することや掲載することは禁止されています。TI や第三者の知的財産権のライセンスが付与されている訳ではありません。お客様は、これらのリソースを自身で使用した結果発生するあらゆる申し立て、損害、費用、損失、責任について、TI およびその代理人を完全に補償するものとし、TI は一切の責任を拒否します。

TI の製品は、[TI の販売条件](#)、[TI の総合的な品質ガイドライン](#)、[ti.com](#) または TI 製品などに関連して提供される他の適用条件に従い提供されます。TI がこれらのリソースを提供することは、適用される TI の保証または他の保証の放棄の拡大や変更を意味するものではありません。TI がカスタム、またはカスタマー仕様として明示的に指定していない限り、TI の製品は標準的なカタログに掲載される汎用機器です。

お客様がいかなる追加条項または代替条項を提案する場合も、TI はそれらに異議を唱え、拒否します。

Copyright © 2026, Texas Instruments Incorporated

最終更新日 : 2025 年 10 月