

## SN74AUP1T34 1ビット単方向電圧レベル変換器

### 1 特長

- 広い動作VCC範囲: 0.9V~3.6V
- 平衡化された伝播遅延:  $t_{PLH} = t_{PHL}$  (1.8Vから3.3Vへの変換の標準値)
- 低い静的消費電力: 最大値5 $\mu$ A ICC
- 3Vにおいて $\pm$ 6mAの出力駆動能力
- $I_{off}$ により部分的パワーダウン・モード動作をサポート
- VCC絶縁機能 -  $V_{CCA}$ 入力がGNDのとき、Bポートは高インピーダンス状態
- 入力ヒステリシスにより、低速な入力遷移と、入力のスイッチング・ノイズ耐性強化を実現
- JESD 22を超えるESD保護
- 5000V、人体モデル(A114-A)
- JESD 78, Class II準拠で100mA超のラッチアップ性能

### 2 アプリケーション

- エンタープライズ
- 産業用
- パーソナル・エレクトロニクス
- テレコミュニケーション

### 3 概要

SN74AUP1T34デバイスは、1ビットの非反転変換器で、2つの独立に構成可能な電源レールを使用します。AからBへの単方向変換器として動作し、Aポートは $V_{CCA}$ をトラッキングするよう設計されています。 $V_{CCA}$ は0.9V~3.6Vの電源電圧を受け付けます。Bポートは $V_{CCB}$ をトラッキングするよう設計されています。 $V_{CCB}$ は0.9V~3.6Vの電源電圧を受け付けます。これにより、1V、1.2V、1.5V、1.8V、2.5V、3.3Vの電圧ノード間で低電圧の変換が可能になります。また、SN74AUP1T34は $I_{off}$ を使用する部分的パワーダウン・アプリケーション用に完全に動作が規定されています。 $I_{off}$ 回路が出力をディスエーブルにするため、電源切断時にデバイスに電流が逆流して損傷に至ることを回避できます。

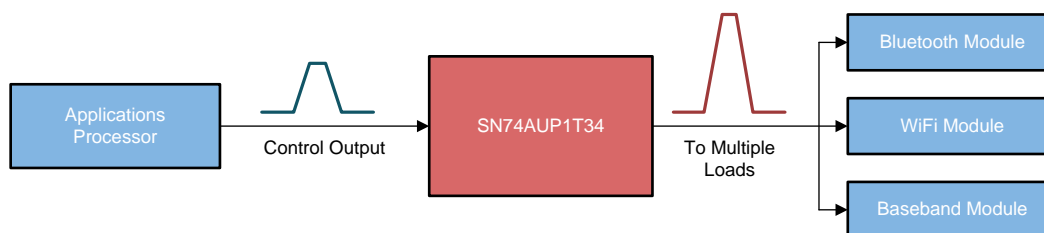
VCC絶縁機能により、 $V_{CCA}$ 入力がGNDのとき、Bポートは高インピーダンス状態です。 $V_{CCB}$ 入力がGNDのとき、A側へのどの入力も、たとえフローティングであっても、リーク電流は引き起こしません。

#### 製品情報<sup>(1)</sup>

型番	パッケージ	本体サイズ(公称)
SN74AUP1T34DCK	SC70 (5)	2.00mm×1.25mm
SN74AUP1T34DRY	SON (6)	1.45mm×1.00mm
SN74AUP1T34DSF	SON (6)	1.00mm×1.00mm

(1) 利用可能なすべてのパッケージについては、このデータシートの末尾にある注文情報を参照してください。

#### サンプル・アプリケーション



## 目次

1	特長	1	8.2	Functional Block Diagram	12
2	アプリケーション	1	8.3	Feature Description	12
3	概要	1	8.4	Device Functional Modes	12
4	改訂履歴	2	9	<b>Application and Implementation</b>	13
5	<b>Pin Configuration and Functions</b>	4	9.1	Application Information	13
6	<b>Specifications</b>	5	9.2	Typical Application	13
6.1	Absolute Maximum Ratings	5	10	<b>Power Supply Recommendations</b>	15
6.2	ESD Ratings	5	11	<b>Layout</b>	15
6.3	Recommended Operating Conditions	6	11.1	Layout Guidelines	15
6.4	Thermal Information	6	11.2	Layout Example	15
6.5	Electrical Characteristics: DC	7	12	デバイスおよびドキュメントのサポート	16
6.6	Electrical Characteristics: AC	8	12.1	コミュニティ・リソース	16
6.7	Typical Characteristics	11	12.2	商標	16
7	<b>Parameter Measurement Information</b>	11	12.3	静電気放電に関する注意事項	16
8	<b>Detailed Description</b>	12	12.4	Glossary	16
8.1	Overview	12	13	メカニカル、パッケージ、および注文情報	16

## 4 改訂履歴

資料番号末尾の英字は改訂を表しています。その改訂履歴は英語版に準じています。

Revision E (June 2016) から Revision F に変更	Page
• Added operating junction temperature to <i>Absolute Maximum Ratings</i> table	5
• Updated <i>Recommended Operating Conditions</i> table	6
• Updated the $V_{CCB}$ value for the parameter 'high-level input voltage' in the <i>Recommended Operating Conditions</i> table	6
• Updated the $V_{CCB}$ value for the parameter 'low-level input voltage' in the <i>Recommended Operating Conditions</i> table	6
• Added <i>Electrical Characteristics: DC</i> table	7

Revision D (April 2016) から Revision E に変更	Page
• Changed pin A number From: 3 To: 2 and GND From: 2 To: 3 for the SC70 package in the <i>Pin Configuration and Functions</i> section	4

Revision C (May 2013) から Revision D に変更	Page
• 「ESD定格」の表、「機能説明」セクション、「デバイスの機能モード」セクション、「アプリケーションと実装」セクション、「電源に関する推奨事項」セクション、「レイアウト」セクション、「デバイスおよびドキュメントのサポート」セクション、「メカニカル、パッケージ、および注文情報」セクションを追加。	1
• 「注文情報」表を削除	1

Revision B (July 2012) から Revision C に変更	Page
• 「特長」に「VCC絶縁機能 - $V_{CCA}$ 入力がGNDのとき、Bポートは高インピーダンス状態」を追加	1
• Updated <i>Pin Functions</i> table.	4
• Deleted $I_{OZ}$ PARAMETER from RECOMMENDED OPERATION CONDITIONS.	6
• Added $V_{MI}$ and $V_{MO}$ equations to Waveform 1 graphic.	10
• 追加 FUNCTION TABLE.	12

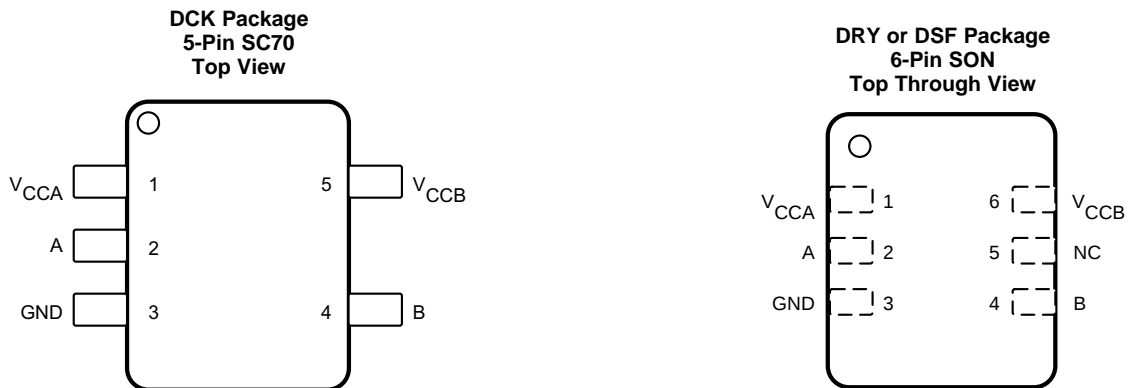
---

**Revision A (June 2012) から Revision B に変更**

**Page**

- 「特長」から「出力イネーブル機能により、ユーザーが出力をディセーブルして消費電力を削減可能」を削除..... 1
-

## 5 Pin Configuration and Functions



### Pin Functions

NAME	PIN		I/O	DESCRIPTION
	SC70	SON		
A	2	2	I	Input Port
B	4	4	O	Output Port
GND	3	3	—	Ground
V <sub>CCA</sub>	1	1	—	Input Port DC Power Supply
V <sub>CCB</sub>	5	6	—	Output Port DC Power Supply
NC	—	5	—	No Connect. Leave floating.

## 6 Specifications

### 6.1 Absolute Maximum Ratings

over operating free-air temperature range (unless otherwise noted)

		MIN	MAX	UNIT
Supply voltage, $V_{CCA}$ and $V_{CCB}$		-0.3	4	V
Input voltage, $V_I$		-0.5	4.6	V
		-0.5	4.6	
		-0.5	4.6	
Voltage applied to any output in the high-impedance or power-off state, $V_O$		-0.5	4.6	V
		-0.5	4.6	
Voltage applied to any output in the high or low state, $V_O$		-0.5	4.6	V
		-0.5	4.6	
Input clamp current, $I_{IK}$	$V_I < 0\text{ V}$		-50	mA
Output clamp current, $I_{OK}$	$V_O < 0\text{ V}$		-50	mA
Continuous output current, $I_O$			±50	mA
Continuous current through $V_{CCA}$ or GND			±100	mA
Storage temperature, $T_{stg}$		-65	150	°C
Operating junction temperature, $T_J$			150	°C

### 6.2 ESD Ratings

		VALUE	UNIT
$V_{(ESD)}$ Electrostatic discharge	Human-body model (HBM), per ANSI/ESDA/JEDEC JS-001 <sup>(1)</sup>	5000	V
	Charged-device model (CDM), per JEDEC specification JESD22-C101 <sup>(2)</sup>	750	

(1) JEDEC document JEP155 states that 500-V HBM allows safe manufacturing with a standard ESD control process.

(2) JEDEC document JEP157 states that 250-V CDM allows safe manufacturing with a standard ESD control process.

### 6.3 Recommended Operating Conditions

over operating free-air temperature range (unless otherwise noted)

			MIN	NOM	MAX	UNIT	
V <sub>CCA</sub>	Supply voltage		0.9		3.6	V	
V <sub>CCB</sub>	Supply voltage		0.9		3.6	V	
V <sub>IH</sub>	High-level input voltage	V <sub>CCA</sub> = 0.9 V to 1.95 V	V <sub>CCB</sub> = 0.9 V to 3.6 V		0.65 × V <sub>CCA</sub>	V	
		V <sub>CCA</sub> = 2.3 V to 2.7 V	V <sub>CCB</sub> = 0.9 V to 3.6 V		1.6		
		V <sub>CCA</sub> = 3 V to 3.6 V	V <sub>CCB</sub> = 0.9 V to 3.6 V		2		
V <sub>IH</sub>	Low-level input voltage	V <sub>CCA</sub> = 0.9 V	V <sub>CCB</sub> = 0.9 V to 3.6 V		0.3 × V <sub>CCA</sub>	V	
		V <sub>CCA</sub> = 1 V to 1.95 V	V <sub>CCB</sub> = 0.9 V to 3.6 V		0.35 × V <sub>CCA</sub>		
		V <sub>CCA</sub> = 2.3 V to 2.7 V	V <sub>CCB</sub> = 0.9 V to 3.6 V		0.7		
		V <sub>CCA</sub> = 3 V to 3.6 V	V <sub>CCB</sub> = 0.9 V to 3.6 V		0.9		
Δt/Δv	Input transition rise or fall rate	V <sub>CCA</sub> = 3 V to 3.6 V	V <sub>CCB</sub> = 0.9 V to 3.6 V		200	ns/V	
T <sub>A</sub>	Operating free-air temperature				–40	85	°C

### 6.4 Thermal Information

THERMAL METRIC <sup>(1)</sup>	SN74AUP1T34			UNIT	
	DCK (SC70)	DRY (SON)	DSF (SON)		
	5 PINS	6 PINS	6 PINS		
R <sub>θJA</sub>	Junction-to-ambient thermal resistance	300.8	338.5	367.1	°C/W
R <sub>θJC(top)</sub>	Junction-to-case (top) thermal resistance	141.3	240.4	188.8	°C/W
R <sub>θJB</sub>	Junction-to-board thermal resistance	77.3	224.6	274.6	°C/W
ψ <sub>JT</sub>	Junction-to-top characterization parameter	12.6	86.8	24.1	°C/W
ψ <sub>JB</sub>	Junction-to-board characterization parameter	76.5	221.4	273.1	°C/W

(1) For more information about traditional and new thermal metrics, see the [Semiconductor and IC Package Thermal Metrics](#) application report.

## 6.5 Electrical Characteristics: DC

over operating free-air temperature range (unless otherwise noted)

PARAMETER	TEST CONDITIONS	V <sub>CCA</sub>	V <sub>CCB</sub>	MIN	MAX	UNIT
V <sub>OH</sub> High-level output voltage	V <sub>I</sub> = V <sub>IH</sub>	I <sub>OH</sub> = -100 μA	0.9 V to 3.6 V	0.9 V to 3.6 V	V <sub>CCB</sub> - 0.2	V
		I <sub>OH</sub> = -0.25 mA	0.9 V to 1 V	0.9 V to 1 V	0.75 × V <sub>CCB</sub>	
		I <sub>OH</sub> = -1.5 mA	1.2 V	1.2 V	1	
		I <sub>OH</sub> = -2 mA	1.65 V	1.65 V	1.32	
		I <sub>OH</sub> = -3 mA	2.3 V	2.3 V	1.9	
		I <sub>OH</sub> = -6 mA	3 V	3 V	2.72	
V <sub>OL</sub> Low-level output voltage	V <sub>I</sub> = V <sub>IL</sub>	I <sub>OL</sub> = 100 μA	0.9 V to 3.6 V	0.9 V to 3.6 V	0.1	V
		I <sub>OL</sub> = 0.25 mA	0.9 V to 1 V	0.9 V to 1 V	0.1	
		I <sub>OL</sub> = 1.5 mA	1.2 V	1.2 V	0.3 × V <sub>CCB</sub>	
		I <sub>OL</sub> = 2 mA	1.65 V	1.65 V	0.31	
		I <sub>OL</sub> = 3 mA	2.3 V	2.3 V	0.31	
		I <sub>OL</sub> = 6 mA	3 V	3 V	0.31	
I <sub>I</sub> Input leakage current	V <sub>I</sub> = V <sub>CCA</sub> or GND	0.9 V to 3.6 V	0.9 V to 3.6 V		±1	μA
I <sub>off</sub> Off-state current	A or B port: V <sub>I</sub> or V <sub>O</sub> = 0 to 3.6 V	0 V	0 V to 3.6 V		±5	μA
		0 V to 3.6 V	0 V		±5	
I <sub>CCA</sub> V <sub>CCA</sub> supply current	V <sub>I</sub> = V <sub>CCI</sub> or GND, I <sub>O</sub> = 0 mA	0.9 V to 3.6 V	0.9 V to 3.6 V		5	μA
		0.9 V to 3.6 V	V <sub>CCA</sub>		2	
		0 V	0 V to 3.6 V		1	
		0 V to 3.6 V	0 V		1	
I <sub>CCB</sub> V <sub>CCB</sub> supply current	V <sub>I</sub> = V <sub>CCI</sub> or GND, I <sub>O</sub> = 0 mA	0.9 V to 3.6 V	0.9 V to 3.6 V		5	μA
		0.9 V to 3.6 V	V <sub>CCA</sub>		2	
		0 V	0 V to 3.6 V		1	
		0 V to 3.6 V	0 V		1	
I <sub>CCA</sub> + I <sub>CCB</sub> Combined supply current	V <sub>I</sub> = V <sub>CCI</sub> or GND, I <sub>O</sub> = 0 mA	0.9 V to 3.6 V	0.9 V to 3.6 V		5.2	μA
C <sub>I</sub> Input capacitance	V <sub>I</sub> = 3.3 V or GND	3.3 V	3.3 V		4	pF
C <sub>I/O</sub> Input-to-output internal capacitance	A or B port: V <sub>O</sub> = 3.3 V or GND	0 V	3.3 V		7	pF

### 6.6 Electrical Characteristics: AC

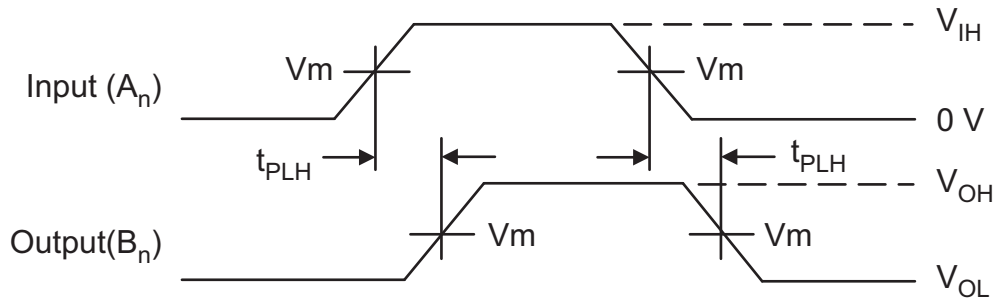
over operating free-air temperature range (unless otherwise noted)

PARAMETER	TEST CONDITIONS	V <sub>CCA</sub>	V <sub>CCB</sub>	MIN	TYP	MAX	UNIT	
t <sub>PLH</sub> /t <sub>PHL</sub> Propagation delay time low-to-high output / high-to-low output	C <sub>L</sub> = 5 pF	0.9 V	0.9 V		25		ns	
			1.2 V		18			
			1.65 V		16.2			
			2.3 V		16.3			
			3 V		16.8			
	C <sub>L</sub> = 5 pF	1.2 V	0.9 V			42.5		
			1.2 V			24.9		
			1.65 V			23.2		
			2.3 V			22.6		
			3 V			22.5		
	C <sub>L</sub> = 5 pF	1.65 V	0.9 V			40		
			1.2 V			10.7		
			1.65 V			8.84		
			2.3 V			8.08		
			3 V			7.88		
	C <sub>L</sub> = 5 pF	2.3 V	0.9 V			41.3		
			1.2 V			8.02		
			1.65 V			5.73		
			2.3 V			4.92		
			3 V			4.2		
C <sub>L</sub> = 5 pF	3 V	0.9 V			42.5			
		1.2 V			7.61			
		1.65 V			4.5			
		2.3 V			3.65			
		3 V			3.39			
t <sub>PLH</sub> /t <sub>PHL</sub> Propagation delay time low-to-high output / high-to-low output	C <sub>L</sub> = 10 pF	0.9 V	0.9 V		28.9		ns	
			1.2 V		19.8			
			1.65 V		17.9			
			2.3 V		18			
			3 V		18.5			
	C <sub>L</sub> = 10 pF	1.2 V	0.9 V			43.22		
			1.2 V			12.33		
			1.65 V			9.57		
			2.3 V			8.81		
			3 V			8.61		
	C <sub>L</sub> = 10 pF	1.65 V	0.9 V			40.44		
			1.2 V			9.21		
			1.65 V			6.57		
			2.3 V			5.5		
			3 V			4.73		
	C <sub>L</sub> = 10 pF	2.3 V	0.9 V			41.56		
			1.2 V			8.3		
			1.65 V			5.54		
			2.3 V			4.42		
			3 V			4.01		
C <sub>L</sub> = 10 pF	3 V	0.9 V			42.81			
		1.2 V			7.87			
		1.65 V			4.55			
		2.3 V			3.8			
		3 V			3.36			

**Electrical Characteristics: AC (continued)**

over operating free-air temperature range (unless otherwise noted)

PARAMETER	TEST CONDITIONS	V <sub>CCA</sub>	V <sub>CCB</sub>	MIN	TYP	MAX	UNIT	
t <sub>PLH</sub> /t <sub>PHL</sub> Propagation delay time low-to-high output / high-to-low output	C <sub>L</sub> = 15 pF	0.9 V	0.9 V		30.6		ns	
			1.2 V		21.6			
			1.65 V		19.6			
			2.3 V		19.7			
			3 V		20.3			
	C <sub>L</sub> = 15 pF	1.2 V	0.9 V					43.87
			1.2 V					12.98
			1.65 V					10.3
			2.3 V					9.54
			3 V					9.34
	C <sub>L</sub> = 15 pF	1.65 V	0.9 V					40.78
			1.2 V					9.59
			1.65 V					6.95
			2.3 V					5.87
			3 V					5.07
	C <sub>L</sub> = 15 pF	2.3 V	0.9 V					41.79
			1.2 V					8.55
			1.65 V					5.8
			2.3 V					4.68
			3 V					4.27
C <sub>L</sub> = 15 pF	3 V	0.9 V				43.09		
		1.2 V				8.16		
		1.65 V				4.84		
		2.3 V				4.09		
		3 V				3.65		
t <sub>PLH</sub> /t <sub>PHL</sub> Propagation delay time low-to-high output / high-to-low output	C <sub>L</sub> = 30 pF	0.9 V	0.9 V		32.1		ns	
			1.2 V		21.3			
			1.65 V		18.7			
			2.3 V		18			
			3 V		18.3			
	C <sub>L</sub> = 30 pF	1.2 V	0.9 V					45.65
			1.2 V					14.76
			1.65 V					12.37
			2.3 V					11.61
			3 V					11.41
	C <sub>L</sub> = 30 pF	1.65 V	0.9 V					41.72
			1.2 V					10.65
			1.65 V					8.01
			2.3 V					6.94
			3 V					5.99
	C <sub>L</sub> = 30 pF	2.3 V	0.9 V					42.44
			1.2 V					9.26
			1.65 V					6.51
			2.3 V					5.39
			3 V					4.97
C <sub>L</sub> = 30 pF	3 V	0.9 V				43.69		
		1.2 V				8.8		
		1.65 V				5.48		
		2.3 V				4.72		
		3 V				4.28		



$V_{MI} = V_{IH}/2; V_{MO} = V_{CCB}/2$

$t_R = t_F = 2.0 \text{ ns}, 10\% \text{ to } 90\%; f = 1 \text{ MHz}; t_W = 500 \text{ ns}$

**Figure 1. Waveform 1 – Propagation Delays**

### 6.7 Typical Characteristics

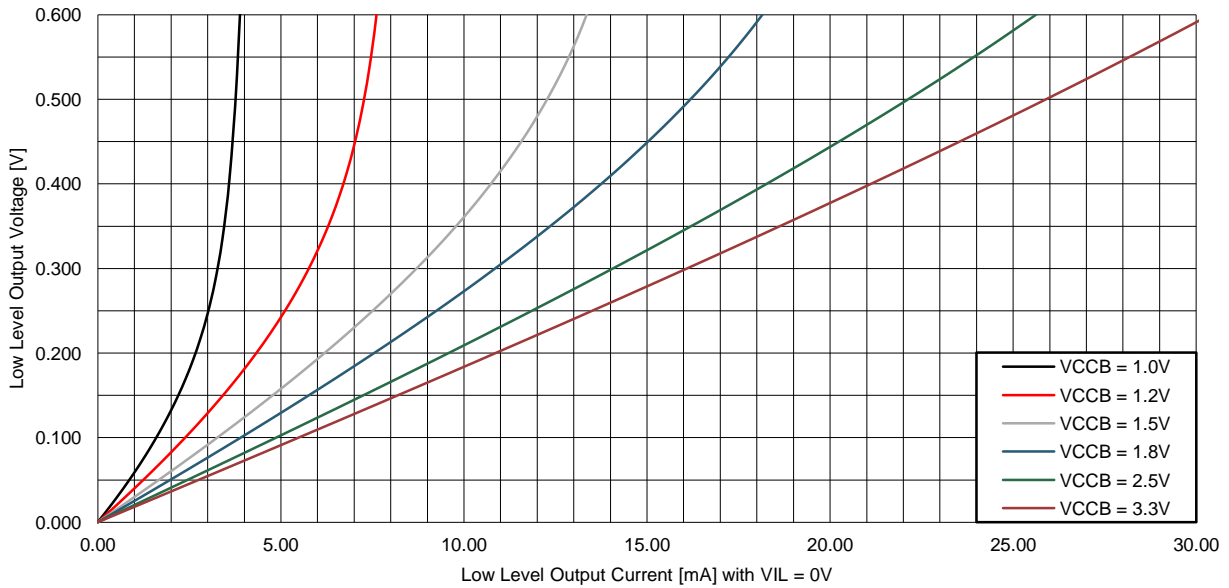
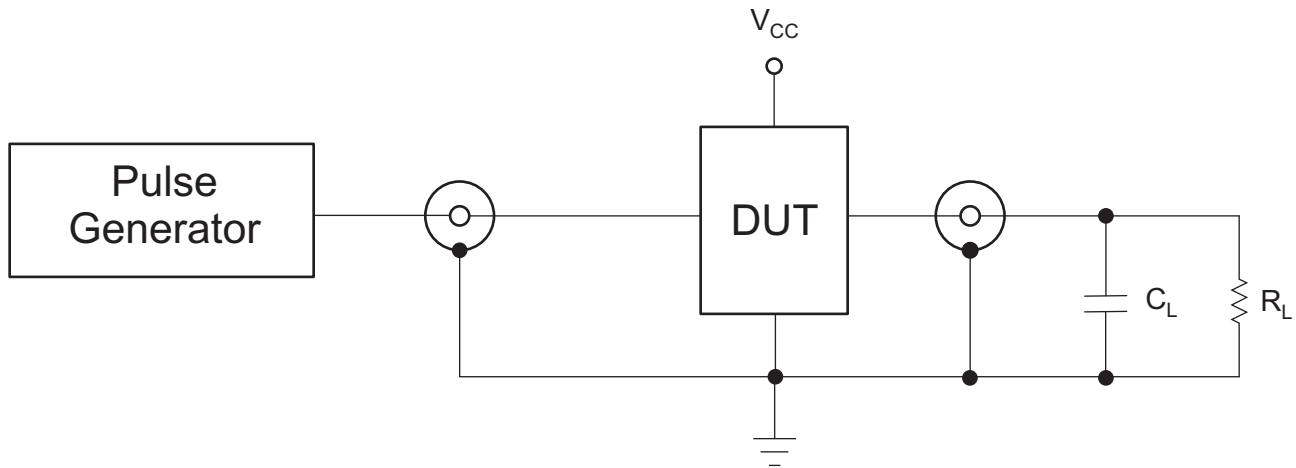


Figure 2. Low Level Output Voltage vs Low Level Output Current

## 7 Parameter Measurement Information



### TEST

$t_{PLH}$ ,  $t_{PHL}$

$C_L$  = 5 pF, 10 pF, 15 pF, 30 pF or equivalent (includes probe and jig capacitance)

$R_L$  = 1 M $\Omega$  or equivalent

$Z_{OUT}$  of pulse generator = 50  $\Omega$

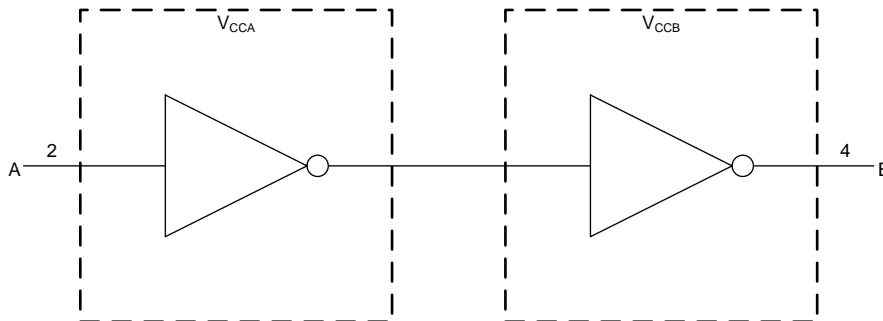
Figure 3. AC (Propagation Delay) Test Circuit

## 8 Detailed Description

### 8.1 Overview

The SN74AUP1T34 is a unidirectional, single-bit, dual-supply, noninverting voltage-level translator. Pin A, which is referenced to  $V_{CCA}$ , receives the signal that is to be level translated. Pin B, which is referenced to  $V_{CCB}$ , transmits the level translated signal. Both supply pins  $V_{CCA}$  and  $V_{CCB}$  support a voltage range from 0.9 V to 3.6 V.

### 8.2 Functional Block Diagram



### 8.3 Feature Description

#### 8.3.1 Fully Configurable Dual-Rail Design

Both  $V_{CCA}$  and  $V_{CCB}$  can be supplied at any voltage from 0.9 V to 3.6 V, making the device suitable for translating between any of the voltage nodes (1 V, 1.2 V, 1.8 V, 2.5 V, and 3.3 V).

#### 8.3.2 Partial-Power-Down Mode Operation

$I_{off}$  circuitry disables the outputs, preventing damaging current backflow through the SN74AUP1T34 when it is powered down. This can occur in applications where subsections of a system are powered down (partial-power-down) to reduce power consumption.

#### 8.3.3 $V_{CC}$ Isolation

The  $V_{CC}$  isolation feature ensures that if either  $V_{CCA}$  or  $V_{CCB}$  are at GND (or  $< 0.4$  V), both ports A and B are set to a high-impedance state, preventing false logic levels from being presented to either bus.

#### 8.3.4 Input Hysteresis

Input hysteresis allows the input to support slew rates as slow as 200 ns/V, improving switching noise immunity.

### 8.4 Device Functional Modes

表 1 lists the functional modes of the SN74AUP1T34.

表 1. Function Table

INPUT	OUTPUT
A PORT	B PORT
L	L
H	H

## 9 Application and Implementation

### 注

Information in the following applications sections is not part of the TI component specification, and TI does not warrant its accuracy or completeness. TI's customers are responsible for determining suitability of components for their purposes. Customers should validate and test their design implementation to confirm system functionality.

### 9.1 Application Information

The SN74AUP1T34 can be used in level-translation applications for interfacing devices or systems operating at different interface voltages with one another.

### 9.2 Typical Application

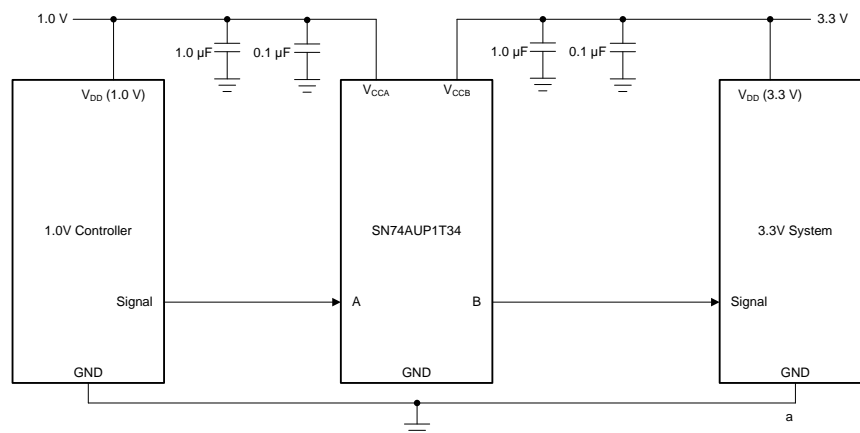


图 4. Typical Application Example

#### 9.2.1 Design Requirements

表 2 lists the design requirements of the SN74AUP1T34.

表 2. Design Parameters

DESIGN PARAMETER	EXAMPLE VALUE
Input Voltage Range	0.9 V to 3.6 V
Output Voltage Range	0.9 V to 3.6 V

#### 9.2.2 Detailed Design Procedure

To begin the design process, determine the following:

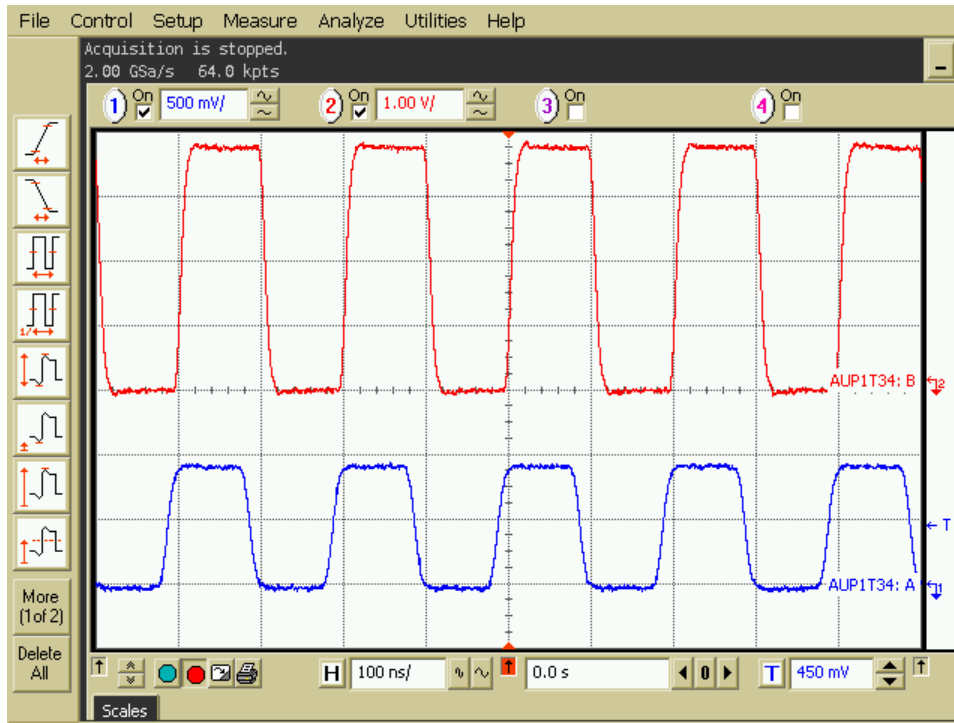
- Input voltage range
  - Use the supply voltage of the device that is driving the SN74AUP1T34 device to determine the input voltage range. For a valid logic-high, the value must exceed the  $V_{IH}$  of the input port. For a valid logic low the value must be less than the  $V_{IL}$  of the input port.
- Output voltage range
  - Use the supply voltage of the device that the SN74AUP1T34 device is driving to determine the output voltage range.

**SN74AUP1T34**

JAJ5FA7F – JUNE 2012 – REVISED APRIL 2018

www.tij.co.jp

**9.2.3 Application Curve**



**5. 10-MHz Up Translation (0.9 V to 3.6 V)**

## 10 Power Supply Recommendations

Connect ground before applying either  $V_{CCA}$  or  $V_{CCB}$ . There is no specific power sequence requirement for the SN74AUP1T34.  $V_{CCA}$  or  $V_{CCB}$  may be powered up first, and  $V_{CCA}$  or  $V_{CCB}$  may be powered down first.

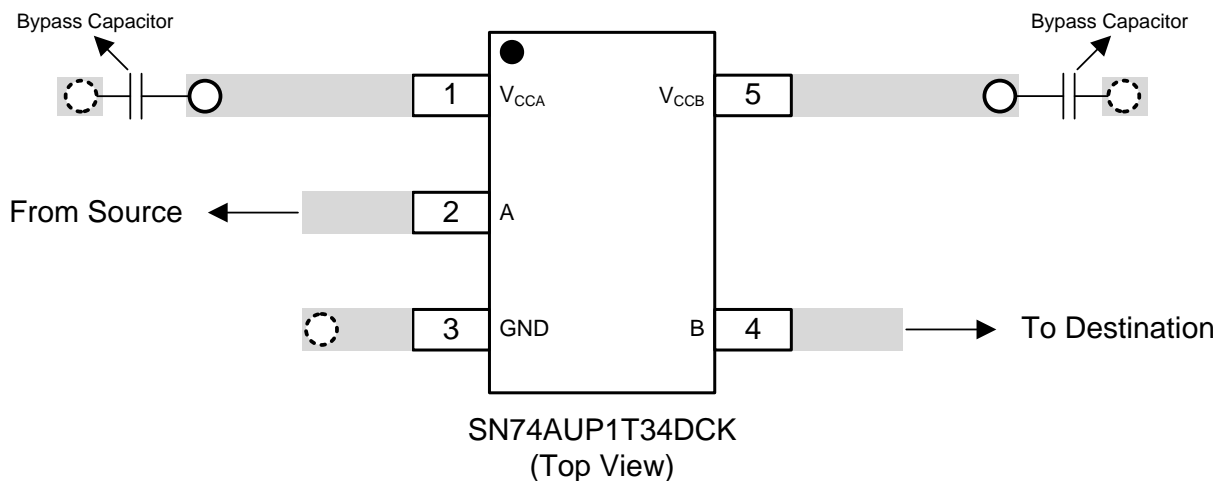
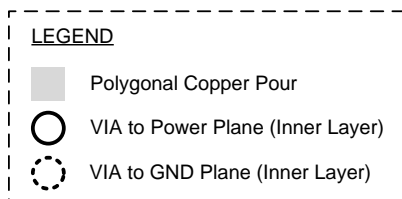
## 11 Layout

### 11.1 Layout Guidelines

To ensure reliability of the device, TI recommends following common printed-circuit board layout guidelines is recommended.

- Bypass capacitors must be used on power supplies.
- Short trace lengths must be used to avoid excessive loading.
- Placing pads on the signal paths for loading capacitors or pullup resistors helps adjust rise and fall times of signals depending on the system requirements.

### 11.2 Layout Example



**图 6. Example Layout**

## 12 デバイスおよびドキュメントのサポート

### 12.1 コミュニティ・リソース

The following links connect to TI community resources. Linked contents are provided "AS IS" by the respective contributors. They do not constitute TI specifications and do not necessarily reflect TI's views; see TI's [Terms of Use](#).

**TI E2E™オンライン・コミュニティ** *TIのE2E ( Engineer-to-Engineer )* コミュニティ。エンジニア間の共同作業を促進するために開設されたものです。e2e.ti.comでは、他のエンジニアに質問し、知識を共有し、アイデアを検討して、問題解決に役立てることができます。

**設計サポート** *TIの設計サポート* 役に立つE2Eフォーラムや、設計サポート・ツールをすばやく見つけることができます。技術サポート用の連絡先情報も参照できます。

### 12.2 商標

E2E is a trademark of Texas Instruments.  
All other trademarks are the property of their respective owners.

### 12.3 静電気放電に関する注意事項



これらのデバイスは、限定的なESD(静電破壊)保護機能を内蔵しています。保存時または取り扱い時は、MOSゲートに対する静電破壊を防止するために、リード線同士をショートさせておくか、デバイスを導電フォームに入れる必要があります。

### 12.4 Glossary

[SLYZ022](#) — *TI Glossary*.

This glossary lists and explains terms, acronyms, and definitions.

## 13 メカニカル、パッケージ、および注文情報

以降のページには、メカニカル、パッケージ、および注文に関する情報が記載されています。この情報は、そのデバイスについて利用可能な最新のデータです。このデータは予告なく変更されることがあり、ドキュメントが改訂される場合もあります。本データシートのブラウザ版を使用されている場合は、画面左側の説明をご覧ください。

**PACKAGING INFORMATION**

Orderable part number	Status (1)	Material type (2)	Package   Pins	Package qty   Carrier	RoHS (3)	Lead finish/ Ball material (4)	MSL rating/ Peak reflow (5)	Op temp (°C)	Part marking (6)
<a href="#">SN74AUP1T34DCKR</a>	Active	Production	SC70 (DCK)   5	3000   LARGE T&R	Yes	NIPDAU   SN	Level-1-260C-UNLIM	-40 to 85	U2E
SN74AUP1T34DCKR.B	Active	Production	SC70 (DCK)   5	3000   LARGE T&R	Yes	SN	Level-1-260C-UNLIM	-40 to 85	U2E
<a href="#">SN74AUP1T34DRYR</a>	Active	Production	SON (DRY)   6	5000   LARGE T&R	Yes	NIPDAU	Level-1-260C-UNLIM	-40 to 85	U2
SN74AUP1T34DRYR.B	Active	Production	SON (DRY)   6	5000   LARGE T&R	Yes	NIPDAU	Level-1-260C-UNLIM	-40 to 85	U2
SN74AUP1T34DRYRG4	Active	Production	SON (DRY)   6	5000   LARGE T&R	Yes	NIPDAU	Level-1-260C-UNLIM	-40 to 85	U2
SN74AUP1T34DRYRG4.B	Active	Production	SON (DRY)   6	5000   LARGE T&R	Yes	NIPDAU	Level-1-260C-UNLIM	-40 to 85	U2
<a href="#">SN74AUP1T34DSFR</a>	Active	Production	SON (DSF)   6	5000   LARGE T&R	Yes	NIPDAU	Level-1-260C-UNLIM	-40 to 85	U2
SN74AUP1T34DSFR.B	Active	Production	SON (DSF)   6	5000   LARGE T&R	Yes	NIPDAU	Level-1-260C-UNLIM	-40 to 85	U2
SN74AUP1T34DSFRG4	Active	Production	SON (DSF)   6	5000   LARGE T&R	Yes	NIPDAU	Level-1-260C-UNLIM	-40 to 85	U2
SN74AUP1T34DSFRG4.B	Active	Production	SON (DSF)   6	5000   LARGE T&R	Yes	NIPDAU	Level-1-260C-UNLIM	-40 to 85	U2

(1) **Status:** For more details on status, see our [product life cycle](#).

(2) **Material type:** When designated, preproduction parts are prototypes/experimental devices, and are not yet approved or released for full production. Testing and final process, including without limitation quality assurance, reliability performance testing, and/or process qualification, may not yet be complete, and this item is subject to further changes or possible discontinuation. If available for ordering, purchases will be subject to an additional waiver at checkout, and are intended for early internal evaluation purposes only. These items are sold without warranties of any kind.

(3) **RoHS values:** Yes, No, RoHS Exempt. See the [TI RoHS Statement](#) for additional information and value definition.

(4) **Lead finish/Ball material:** Parts may have multiple material finish options. Finish options are separated by a vertical ruled line. Lead finish/Ball material values may wrap to two lines if the finish value exceeds the maximum column width.

(5) **MSL rating/Peak reflow:** The moisture sensitivity level ratings and peak solder (reflow) temperatures. In the event that a part has multiple moisture sensitivity ratings, only the lowest level per JEDEC standards is shown. Refer to the shipping label for the actual reflow temperature that will be used to mount the part to the printed circuit board.

(6) **Part marking:** There may be an additional marking, which relates to the logo, the lot trace code information, or the environmental category of the part.

Multiple part markings will be inside parentheses. Only one part marking contained in parentheses and separated by a "~" will appear on a part. If a line is indented then it is a continuation of the previous line and the two combined represent the entire part marking for that device.

**Important Information and Disclaimer:**The information provided on this page represents TI's knowledge and belief as of the date that it is provided. TI bases its knowledge and belief on information provided by third parties, and makes no representation or warranty as to the accuracy of such information. Efforts are underway to better integrate information from third parties. TI has taken and continues to take reasonable steps to provide representative

and accurate information but may not have conducted destructive testing or chemical analysis on incoming materials and chemicals. TI and TI suppliers consider certain information to be proprietary, and thus CAS numbers and other limited information may not be available for release.

In no event shall TI's liability arising out of such information exceed the total purchase price of the TI part(s) at issue in this document sold by TI to Customer on an annual basis.

**OTHER QUALIFIED VERSIONS OF SN74AUP1T34 :**

- Automotive : [SN74AUP1T34-Q1](#)

NOTE: Qualified Version Definitions:

- Automotive - Q100 devices qualified for high-reliability automotive applications targeting zero defects

**TAPE AND REEL INFORMATION**

**QUADRANT ASSIGNMENTS FOR PIN 1 ORIENTATION IN TAPE**


\*All dimensions are nominal

Device	Package Type	Package Drawing	Pins	SPQ	Reel Diameter (mm)	Reel Width W1 (mm)	A0 (mm)	B0 (mm)	K0 (mm)	P1 (mm)	W (mm)	Pin1 Quadrant
SN74AUP1T34DCKR	SC70	DCK	5	3000	178.0	8.4	2.25	2.45	1.2	4.0	8.0	Q3
SN74AUP1T34DRYR	SON	DRY	6	5000	180.0	9.5	1.15	1.6	0.75	4.0	8.0	Q1
SN74AUP1T34DRYRG4	SON	DRY	6	5000	180.0	9.5	1.15	1.6	0.75	4.0	8.0	Q1
SN74AUP1T34DSFR	SON	DSF	6	5000	180.0	8.4	1.16	1.16	0.5	4.0	8.0	Q2
SN74AUP1T34DSFRG4	SON	DSF	6	5000	180.0	8.4	1.16	1.16	0.5	4.0	8.0	Q2

**TAPE AND REEL BOX DIMENSIONS**


\*All dimensions are nominal

Device	Package Type	Package Drawing	Pins	SPQ	Length (mm)	Width (mm)	Height (mm)
SN74AUP1T34DCKR	SC70	DCK	5	3000	208.0	191.0	35.0
SN74AUP1T34DRYR	SON	DRY	6	5000	184.0	184.0	19.0
SN74AUP1T34DRYRG4	SON	DRY	6	5000	184.0	184.0	19.0
SN74AUP1T34DSFR	SON	DSF	6	5000	210.0	185.0	35.0
SN74AUP1T34DSFRG4	SON	DSF	6	5000	210.0	185.0	35.0





LAND PATTERN EXAMPLE  
EXPOSED METAL SHOWN  
SCALE:18X



SOLDER MASK DETAILS

4214834/G 11/2024

NOTES: (continued)

- Publication IPC-7351 may have alternate designs.
- Solder mask tolerances between and around signal pads can vary based on board fabrication site.

# EXAMPLE STENCIL DESIGN

DCK0005A

SOT - 1.1 max height

SMALL OUTLINE TRANSISTOR



SOLDER PASTE EXAMPLE  
BASED ON 0.125 THICK STENCIL  
SCALE:18X

4214834/G 11/2024

NOTES: (continued)

9. Laser cutting apertures with trapezoidal walls and rounded corners may offer better paste release. IPC-7525 may have alternate design recommendations.
10. Board assembly site may have different recommendations for stencil design.

## GENERIC PACKAGE VIEW

**DRY 6**

**USON - 0.6 mm max height**

PLASTIC SMALL OUTLINE - NO LEAD



Images above are just a representation of the package family, actual package may vary.  
Refer to the product data sheet for package details.

4207181/G

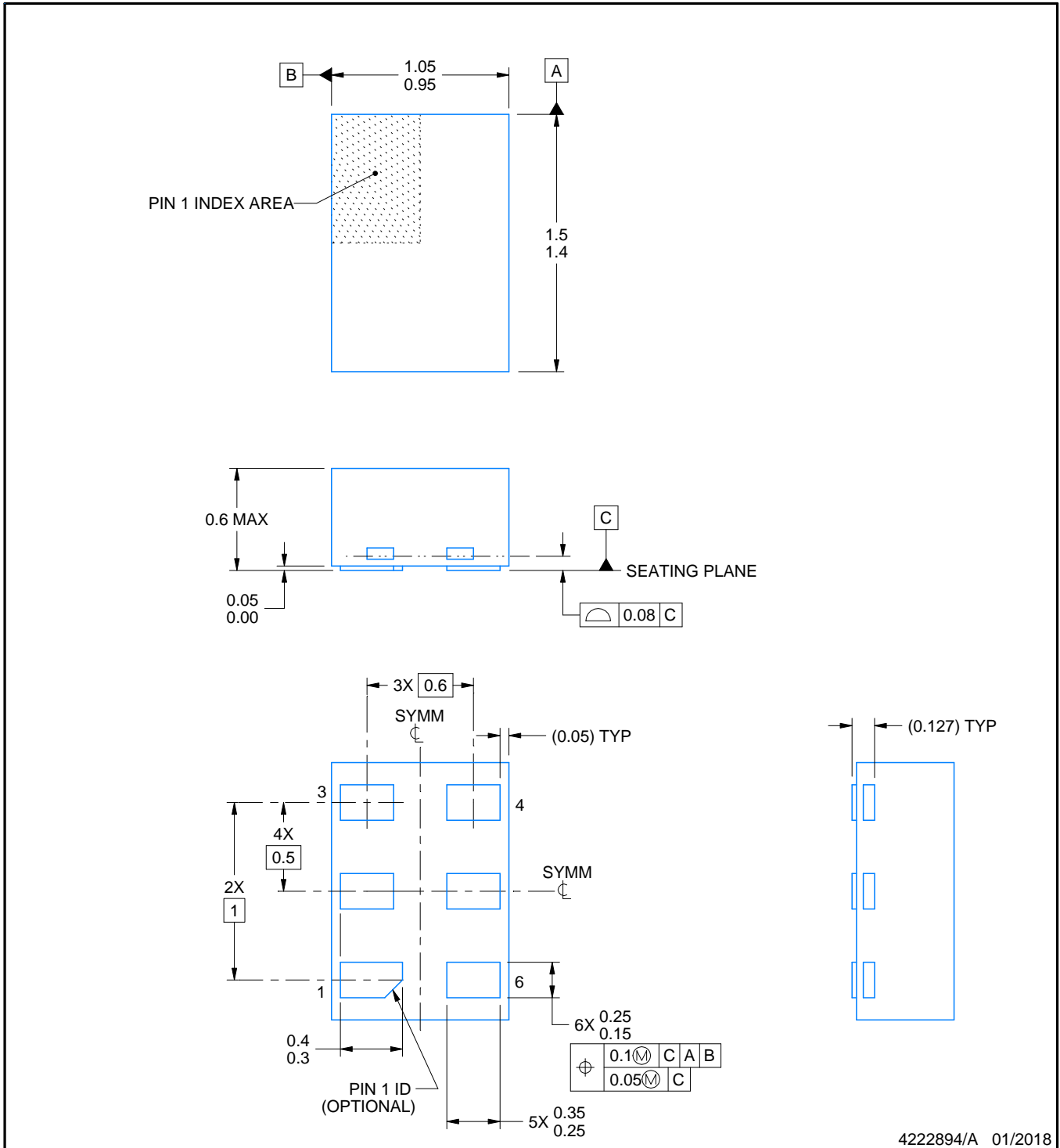
DRY0006A



# PACKAGE OUTLINE

USON - 0.6 mm max height

PLASTIC SMALL OUTLINE - NO LEAD



4222894/A 01/2018

NOTES:

1. All linear dimensions are in millimeters. Any dimensions in parenthesis are for reference only. Dimensioning and tolerancing per ASME Y14.5M.
2. This drawing is subject to change without notice.

# EXAMPLE BOARD LAYOUT

DRY0006A

USON - 0.6 mm max height

PLASTIC SMALL OUTLINE - NO LEAD



LAND PATTERN EXAMPLE  
1:1 RATIO WITH PKG SOLDER PADS  
EXPOSED METAL SHOWN  
SCALE:40X



SOLDER MASK DETAILS

4222894/A 01/2018

NOTES: (continued)

3. For more information, see QFN/SON PCB application report in literature No. SLUA271 ([www.ti.com/lit/sluea271](http://www.ti.com/lit/sluea271)).

# EXAMPLE STENCIL DESIGN

DRY0006A

USON - 0.6 mm max height

PLASTIC SMALL OUTLINE - NO LEAD



SOLDER PASTE EXAMPLE  
BASED ON 0.075 - 0.1 mm THICK STENCIL  
SCALE:40X

4222894/A 01/2018

NOTES: (continued)

4. Laser cutting apertures with trapezoidal walls and rounded corners may offer better paste release. IPC-7525 may have alternate design recommendations.



# DSF0006A

# PACKAGE OUTLINE

## X2SON - 0.4 mm max height

PLASTIC SMALL OUTLINE - NO LEAD



4220597/B 06/2022

### NOTES:

1. All linear dimensions are in millimeters. Any dimensions in parenthesis are for reference only. Dimensioning and tolerancing per ASME Y14.5M.
2. This drawing is subject to change without notice.
3. Reference JEDEC registration MO-287, variation X2AAF.

# EXAMPLE BOARD LAYOUT

DSF0006A

X2SON - 0.4 mm max height

PLASTIC SMALL OUTLINE - NO LEAD



LAND PATTERN EXAMPLE  
EXPOSED METAL SHOWN  
SCALE:40X



SOLDER MASK DETAILS

4220597/B 06/2022

NOTES: (continued)

4. For more information, see Texas Instruments literature number SLUA271 ([www.ti.com/lit/slua271](http://www.ti.com/lit/slua271)).

# EXAMPLE STENCIL DESIGN

DSF0006A

X2SON - 0.4 mm max height

PLASTIC SMALL OUTLINE - NO LEAD



SOLDER PASTE EXAMPLE  
BASED ON 0.09 mm THICK STENCIL

PRINTED SOLDER COVERAGE BY AREA UNDER PACKAGE  
SCALE:40X

4220597/B 06/2022

4. Laser cutting apertures with trapezoidal walls and rounded corners may offer better paste release. IPC-7525 may have alternate design recommendations.

## 重要なお知らせと免責事項

TI は、技術データと信頼性データ (データシートを含みます)、設計リソース (リファレンス デザインを含みます)、アプリケーションや設計に関する各種アドバイス、Web ツール、安全性情報、その他のリソースを、欠陥が存在する可能性のある「現状のまま」提供しており、商品性および特定目的に対する適合性の黙示保証、第三者の知的財産権の非侵害保証を含むいかなる保証も、明示的または黙示的にかかわらず拒否します。

これらのリソースは、TI 製品を使用する設計の経験を積んだ開発者への提供を意図したものです。(1) お客様のアプリケーションに適した TI 製品の選定、(2) お客様のアプリケーションの設計、検証、試験、(3) お客様のアプリケーションに該当する各種規格や、その他のあらゆる安全性、セキュリティ、規制、または他の要件への確実な適合に関する責任を、お客様のみが単独で負うものとし、

上記の各種リソースは、予告なく変更される可能性があります。これらのリソースは、リソースで説明されている TI 製品を使用するアプリケーションの開発の目的でのみ、TI はその使用をお客様に許諾します。これらのリソースに関して、他の目的で複製することや掲載することは禁止されています。TI や第三者の知的財産権のライセンスが付与されている訳ではありません。お客様は、これらのリソースを自身で使用した結果発生するあらゆる申し立て、損害、費用、損失、責任について、TI およびその代理人を完全に補償するものとし、TI は一切の責任を拒否します。

TI の製品は、[TI の販売条件](#)、[TI の総合的な品質ガイドライン](#)、[ti.com](#) または TI 製品などに関連して提供される他の適用条件に従い提供されます。TI がこれらのリソースを提供することは、適用される TI の保証または他の保証の放棄の拡大や変更を意味するものではありません。TI がカスタム、またはカスタマー仕様として明示的に指定していない限り、TI の製品は標準的なカタログに掲載される汎用機器です。

お客様がいかなる追加条項または代替条項を提案する場合も、TI はそれらに異議を唱え、拒否します。

Copyright © 2026, Texas Instruments Incorporated

最終更新日 : 2025 年 10 月