

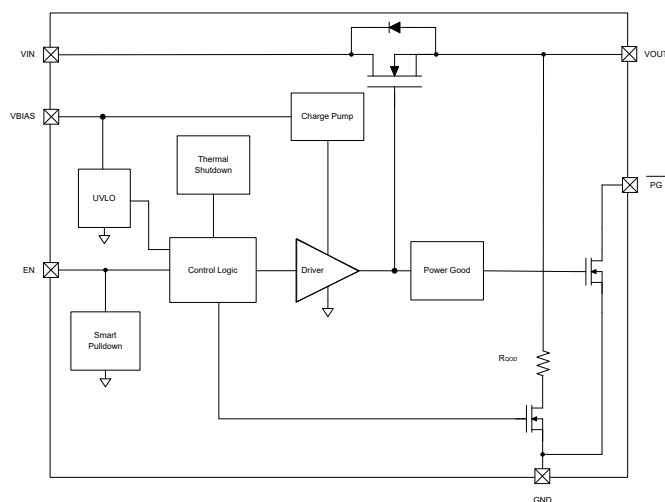
TPS22999 突入電流レギュレーション搭載、4.5V、1.5A、オン抵抗 7.5mΩ、高速ターンオン、ロード・スイッチ

1 特長

- 動作時入力電圧範囲 (V_{IN}): 0.1V~4.5V
- バイアス電圧範囲: 2.3V~5.5V
- 最大連続電流: 1.5A
- オン抵抗 (R_{ON}): 7.5mΩ (標準値)
- レギュレートされた突入電流
- 急速出力放電内蔵: 5.3Ω
- オープン・ドレインのパワー・グッド (\overline{PG}) 信号
- ターンオン時間: 200μs 未満 ($V_{IN} = 1.0V$ 時)
- サーマル・シャットダウン
- VBIAS 電源低電圧誤動作防止 (UVLO)
- 低い消費電力:
 - オン状態 (I_Q): 10μA (標準値)
 - オフ状態 (I_{SD}): 2.7μA (標準値)
- EN ピンのスマート・プルダウン ($R_{PD,EN}$)
 - $EN \geq V_{IH}$ (I_{ON}): 25nA (標準値)
 - $EN \leq V_{IL}$ ($R_{PD,ON}$): 500kΩ (標準値)

2 アプリケーション

- ウェアラブル
- ソリッドステート・ドライブ (SSD)
- PC とノート PC
- 産業用 PC
- 光学モジュール



TPS22999 のブロック図

3 概要

TPS22999 は、高速ターンオン時間を実現しながら、低い突入電流を維持するよう設計されたシングル チャネル ロード スイッチです。このデバイスには、0.1V~ $V_{BIAS} - 1.0V$ の入力電圧範囲で動作できる N チャネル MOSFET が内蔵されており、最大連続 1.5A の電流に対応します。

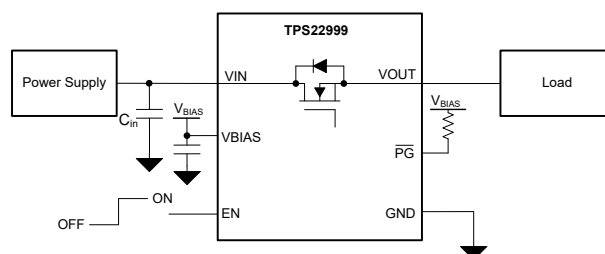
このスイッチは 1 本のイネーブル・ピン (EN) で制御されます。このイネーブル・ピンは低電圧の GPIO 信号 ($V_{IH} = 0.8V$) と直接接続できます。TPS22999 デバイスは、スイッチオフ時の 5.3Ω のクイック出力放電パスを内蔵し、信頼性の高いシステム動作を実現します。本デバイスには、メイン MOSFET が完全に最小抵抗になっていることを示すパワー・グッド (\overline{PG}) 信号があります。この PG 信号を使って下流の負荷を有効にできます。サーマル・シャットダウン機能を内蔵しているため、高温環境でも確実に保護されます。

TPS22999 は、0.35mm ピッチの 8 ピン WCSP パッケージ (YCH) で供給され、-40°C~+105°C の自由気流温度範囲に渡って動作することが特徴です。

パッケージ情報

部品番号	パッケージ(1)	パッケージ・サイズ(2)
TPS22999	YCH (DSBGA, 8)	1.4mm × 0.7mm

- 詳細については、[セクション 10](#) を参照してください。
- パッケージ・サイズ (長さ×幅) は公称値であり、該当する場合はピンも含まれます。



TPS22999 の代表的なアプリケーション



Table of Contents

1 特長	1	6.2 Functional Block Diagram.....	12
2 アプリケーション	1	6.3 Feature Description.....	12
3 概要	1	6.4 Device Functional Modes.....	14
4 Pin Configuration and Functions	3	7 Application and Implementation	15
5 Specifications	4	7.1 Application Information.....	15
5.1 Absolute Maximum Ratings.....	4	7.2 Typical Application.....	15
5.2 ESD Ratings.....	4	7.3 Power Supply Recommendations.....	16
5.3 Recommended Operating Conditions.....	4	7.4 Layout.....	16
5.4 Thermal Information.....	5	8 Device and Documentation Support	18
5.5 Electrical Characteristics (VBIAS = 5.5 V).....	5	8.1 ドキュメントの更新通知を受け取る方法.....	18
5.6 Electrical Characteristics (VBIAS = 3.4 V).....	6	8.2 サポート・リソース.....	18
5.7 Electrical Characteristics (VBIAS = 2.3 V).....	7	8.3 Trademarks.....	18
5.8 Switching Characteristics.....	8	8.4 静電気放電に関する注意事項.....	18
5.9 Timing Diagrams.....	10	8.5 用語集.....	18
5.10 Typical Characteristics.....	11	9 Revision History	18
6 Detailed Description	12	10 Mechanical, Packaging, and Orderable Information	19
6.1 Overview.....	12		

4 Pin Configuration and Functions

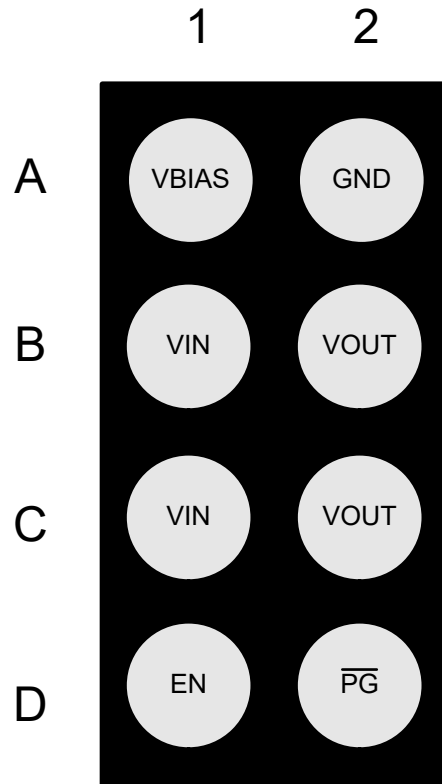


図 4-1. TPS22999 YCH Package, 8-Pin DSBGA (Top View)

表 4-1. Pin Functions

PIN		TYPE ⁽¹⁾	DESCRIPTION
NAME	NO.		
VBIAS	A1	I	Device bias supply. Connect a 0.1- μ F capacitor to ground.
GND	A2	—	Device ground
VIN	B1, C1	I	Switch input
VOUT	B2, C2	O	Switch output
EN	D1	I	Switch enable
$\overline{\text{PG}}$	D2	O	Open drain power-good signal, asserted low when the MOSFET has been fully enhanced. Connect to ground if unused.

(1) I = input, O = output

5 Specifications

5.1 Absolute Maximum Ratings

over operating free-air temperature range (unless otherwise noted)⁽¹⁾

		MIN	MAX	UNIT
V _{IN}	Input voltage	−0.3	6	V
V _{OUT}	Output voltage	−0.3	V _{IN} + 0.3	V
V _{BIAS}	Bias voltage	−0.3	6	V
V _{EN} , V _{PG}	Control pin voltage	−0.3	6	V
I _{MAX}	Maximum current		1.5	A
I _{MAX_PLS}	Maximum current (24 hours)		4.5	A
T _J	Junction temperature		Internally Limited	°C
T _{stg}	Storage temperature	−65	150	°C

- (1) Operation outside the Absolute Maximum Ratings may cause permanent device damage. Absolute Maximum Ratings do not imply functional operation of the device at these or any other conditions beyond those listed under Recommended Operating Conditions. If used outside the Recommended Operating Conditions but within the Absolute Maximum Ratings, the device may not be fully functional, and this may affect device reliability, functionality, performance, and shorten the device lifetime.

5.2 ESD Ratings

			VALUE	UNIT
V _(ESD)	Electrostatic discharge	Human body model (HBM), per ANSI/ESDA/ JEDEC JS-001, all pins ⁽¹⁾	±2000	V
		Charged device model (CDM), per JEDEC specification JS-002, all pins ⁽²⁾	±500	

- (1) JEDEC document JEP155 states that 500-V HBM allows safe manufacturing with a standard ESD control process.
 (2) JEDEC document JEP157 states that 250-V CDM allows safe manufacturing with a standard ESD control process.

5.3 Recommended Operating Conditions

over operating free-air temperature range (unless otherwise noted)

		MIN	NOM	MAX	UNIT
V _{IN}	Input voltage	0.1		V _{BIAS} − 1.0	V
V _{OUT}	Output voltage, EN > V _{IH}	0.1		V _{IN}	V
V _{BIAS}	Bias voltage	2.3		5.5	V
V _{IH}	EN pin high voltage range	0.8		5.5	V
V _{IL}	EN pin low voltage range	0		0.35	V
C _{OUT}	Output capacitor ⁽¹⁾	0		70	μF
V _{PG}	PG pin voltage	0		5.5	V
T _A	Ambient temperature	−40		105	°C

- (1) Effective output capacitance required for stability

5.4 Thermal Information

THERMAL METRIC ^{(1) (2)}		TPS22999	UNIT
		YCH (DSBGA)	
		8 PINS	
$R_{\theta JA}$	Junction-to-ambient thermal resistance	121.8	°C/W
$R_{\theta JC(top)}$	Junction-to-case (top) thermal resistance	1	°C/W
$R_{\theta JB}$	Junction-to-board thermal resistance	34.2	°C/W
Ψ_{JT}	Junction-to-top characterization parameter	0.4	°C/W
Y_{JB}	Junction-to-board characterization parameter	34.2	°C/W
$R_{\theta JC(bot)}$	Junction-to-case (bottom) thermal resistance	N/A	°C/W

- (1) For more information about traditional and new thermal metrics, see the [Semiconductor and IC Package Thermal Metrics](#) application report.
- (2) The thermal parameters are based on a 4-layer PCB according to the JESD51-5 and JESD51-7 standards.

5.5 Electrical Characteristics (VBIAS = 5.5 V)

over operating free-air temperature range (unless otherwise noted)

PARAMETER		TEST CONDITIONS	T_A	MIN	TYP	MAX	UNIT
Power Consumption							
$I_{SD,VBIAS}$	VBIAS shutdown current	EN = 0 V	25°C	2.7			μA
			-40°C to 85°C			4	μA
			-40°C to 105°C			5	μA
$I_{Q,VBIAS}$	VBIAS quiescent current	EN > V_{IH}	25°C	10			μA
			-40°C to 85°C			18	μA
			-40°C to 105°C			20	μA
$I_{Q,VIN}$	VIN quiescent current	EN > V_{IH}	25°C	0.1			μA
			-40°C to 85°C			1	μA
			-40°C to 105°C			1.5	μA
$I_{SD,VIN}$	VIN shutdown current	EN = 0 V, V_{IN} = 4.5 V	25°C	0.1			μA
			-40°C to 85°C			1	μA
			-40°C to 105°C			3	μA
I_{EN}	EN pin leakage	EN = VBIAS	-40°C to 105°C	0.1			μA
Performance							

5.5 Electrical Characteristics (VBIAS = 5.5 V) (続き)

over operating free-air temperature range (unless otherwise noted)

PARAMETER		TEST CONDITIONS	T _A	MIN	TYP	MAX	UNIT
R _{ON}	On-resistance	VIN = 4.5 V	25°C	7.5			mΩ
			-40°C to 85°C			12	mΩ
			-40°C to 105°C			15	mΩ
		VIN = 3.3 V	25°C	7.5			mΩ
			-40°C to 85°C			12	mΩ
			-40°C to 105°C			15	mΩ
		VIN = 1.8 V	25°C	7.5			mΩ
			-40°C to 85°C			12	mΩ
			-40°C to 105°C			15	mΩ
		VIN = 1.0 V	25°C	7.5			mΩ
			-40°C to 85°C			12	mΩ
			-40°C to 105°C			15	mΩ
VIN = 0.78 V	25°C	7.5			mΩ		
	-40°C to 85°C			12	mΩ		
	-40°C to 105°C			15	mΩ		
VIN = 0.5 V	25°C	7.5			mΩ		
	-40°C to 85°C			12	mΩ		
	-40°C to 105°C			15	mΩ		
V _{OL,PG}	Power-Good VOL	I _{PG} = 500μA	-40°C to 105°C			0.2	V
V _{BIAS_UVLO}	V _{BIAS} undervoltage lockout	Falling	-40°C to 105°C	1.65	1.85	2.05	V
		Hysteresis	-40°C to 105°C	0.150			V
		Rising	-40°C to 105°C	1.8	2.0	2.2	V
I _{INRUSH}	Regulated inrush current	C _L = 60μF, V _{IN} ≤ 1 V	-40°C to 105°C		0.95	1.33	A
		C _L = 60μF, V _{IN} > 1 V	-40°C to 105°C		0.95	1.4	A
V _{HYS,EN}	Enable pin hysteresis	VIN = 4.5 V	-40°C to 105°C		75		mV
R _{PD,EN}	Smart pulldown Resistance	EN < V _{IL}	25°C	500			kΩ
			-40°C to 105°C			750	kΩ
R _{QOD}	QOD resistance	VIN = 1.0 V	25°C	5.3			Ω
			-40°C to 105°C			10	Ω
Protection							
TSD	Thermal shutdown		-	116	131	146	°C

5.6 Electrical Characteristics (VBIAS = 3.4 V)

over operating free-air temperature range (unless otherwise noted).

PARAMETER		TEST CONDITIONS	T _A	MIN	TYP	MAX	UNIT
Power Consumption							
I _{SD,VBIAS}	VBIAS shutdown current	EN = 0 V	25°C	2.2			μA
			-40°C to 85°C			4	μA
			-40°C to 105°C			5	μA

5.6 Electrical Characteristics (VBIAS = 3.4 V) (続き)

over operating free-air temperature range (unless otherwise noted).

PARAMETER		TEST CONDITIONS	T _A	MIN	TYP	MAX	UNIT		
I _{Q,VBIAS}	VBIAS quiescent current	EN > V _{IH}	25°C		10		μA		
			-40°C to 85°C			18	μA		
			-40°C to 105°C			20	μA		
I _{Q,VIN}	VIN quiescent current	EN > V _{IH}	25°C		0.1		μA		
			-40°C to 85°C			1	μA		
			-40°C to 105°C			1.5	μA		
I _{SD,VIN}	VIN shutdown current	EN = 0 V, V _{IN} = 2.4 V	25°C		0.1		μA		
			-40°C to 85°C			1	μA		
			-40°C to 105°C			2	μA		
I _{EN}	EN pin leakage	EN = VBIAS	-40°C to 105°C		0.1		μA		
Performance									
R _{ON}	On-resistance	VIN = 2.4 V	25°C		7.5		mΩ		
			-40°C to 85°C			12	mΩ		
			-40°C to 105°C			15	mΩ		
		VIN = 1.8 V	25°C		7.5		mΩ		
			-40°C to 85°C			12	mΩ		
			-40°C to 105°C			15	mΩ		
		VIN = 1.0 V	25°C		7.5		mΩ		
			-40°C to 85°C			12	mΩ		
			-40°C to 105°C			15	mΩ		
		VIN = 0.78 V	25°C		7.5		mΩ		
			-40°C to 85°C			12	mΩ		
			-40°C to 105°C			15	mΩ		
		VIN = 0.5 V	25°C		7.5		mΩ		
			-40°C to 85°C			12	mΩ		
			-40°C to 105°C			15	mΩ		
		I _{INRUSH}	Regulated inrush current	C _L = 60 μF, V _{IN} ≤ 1 V	-40°C to 105°C		0.95	1.33	A
				C _L = 60 μF, V _{IN} > 1 V	-40°C to 105°C		0.95	1.4	A
		V _{OL,PG}	Power-Good V _{OL}	I _{PG} = 500 μA	-40°C to 105°C			0.2	V
V _{HYS,EN}	Enable pin hysteresis	VIN = 2.4 V	-40°C to 105°C		75		mV		
R _{PD,EN}	Smart pulldown resistance	EN < V _{IL}	25°C		500		kΩ		
			-40°C to 105°C			750	kΩ		
R _{QOD}	QOD resistance	VIN = 1.0 V	25°C		8.3		Ω		
			-40°C to 105°C			19	Ω		
Protection									

5.7 Electrical Characteristics (VBIAS = 2.3 V)

over operating free-air temperature range (unless otherwise noted)

PARAMETER	TEST CONDITIONS	T _A	MIN	TYP	MAX	UNIT
Power Consumption						

5.7 Electrical Characteristics (VBIAS = 2.3 V) (続き)

over operating free-air temperature range (unless otherwise noted)

PARAMETER		TEST CONDITIONS	T _A	MIN	TYP	MAX	UNIT
I _{SD,VBIAS}	VBIAS shutdown current	EN = 0 V	25°C		2.1		μA
			-40°C to 85°C			3.5	μA
			-40°C to 105°C			4	μA
I _{Q,VBIAS}	VBIAS quiescent current	EN > V _{IH}	25°C		7.5		μA
			-40°C to 85°C			18	μA
			-40°C to 105°C			20	μA
I _{Q,VIN}	VIN quiescent current	EN > V _{IH}	25°C		0.1		μA
			-40°C to 85°C			1	μA
			-40°C to 105°C			1.5	μA
I _{SD,VIN}	VIN shutdown current	EN = 0 V, V _{IN} = 1.3 V	25°C		0.1		μA
			-40°C to 85°C			1	μA
			-40°C to 105°C			2	μA
I _{EN}	EN pin leakage	EN = VBIAS	-40°C to 105°C		0.1		μA
Performance							
R _{ON}	On-resistance	VIN = 1.3 V	25°C		7.5		mΩ
			-40°C to 85°C			12	mΩ
			-40°C to 105°C			15	mΩ
		VIN = 1.0 V	25°C		7.5		mΩ
			-40°C to 85°C			12	mΩ
			-40°C to 105°C			15	mΩ
		VIN = 0.78 V	25°C		7.5		mΩ
			-40°C to 85°C			12	mΩ
			-40°C to 105°C			15	mΩ
		VIN = 0.5 V	25°C		7.5		mΩ
			-40°C to 85°C			12	mΩ
			-40°C to 105°C			15	mΩ
I _{INRUSH}	Regulated inrush current	C _L = 60 μF	-40°C to 105°C		0.9	1.33	A
V _{OL,PG}	Power-Good VOL	I _{PG} = 500 μA	-40°C to 105°C			0.2	V
V _{HYS,EN}	Enable pin hysteresis	VIN = 1.3 V	-40°C to 105°C		75		mV
R _{PD,EN}	Smart pulldown Resistance	EN < V _{IL}	25°C		500		kΩ
			-40°C to 105°C			750	kΩ
R _{QOD}	QOD resistance	VIN = 1.0 V	25°C		16		Ω
			-40°C to 105°C			35	Ω
Protection							
TSD	Thermal shutdown		-	116	131	146	°C

5.8 Switching Characteristics

over operating free-air temperature range (unless otherwise noted). Measured 350 μs after V_{bias} > 2.3 V.

PARAMETER		TEST CONDITIONS	MIN	TYP	MAX	UNIT
VIN = 4.5 V						
t _{ON}	Turn ON time	R _L = 100 Ω, C _L = 60 μF			440	μs
t _{RISE}	Rise time	R _L = 100 Ω, C _L = 60 μF		200		μs

5.8 Switching Characteristics (続き)

over operating free-air temperature range (unless otherwise noted). Measured 350 μ s after Vbias > 2.3 V.

PARAMETER		TEST CONDITIONS	MIN	TYP	MAX	UNIT
tD	Delay time	$R_L = 100 \Omega, C_L = 60 \mu F$		40		μ s
tFALL	Fall time	$R_L = 100 \Omega, C_L = 60 \mu F$		850		μ s
tOFF	Turn OFF time	$R_L = 100 \Omega, C_L = 60 \mu F$			5	μ s
VIN = 3.3 V						
tON	Turn ON time	$R_L = 100 \Omega, C_L = 60 \mu F$			365	μ s
tRISE	Rise time	$R_L = 100 \Omega, C_L = 60 \mu F$		170		μ s
tD	Delay time	$R_L = 100 \Omega, C_L = 60 \mu F$		30		μ s
tFALL	Fall time	$R_L = 100 \Omega, C_L = 60 \mu F$		750		μ s
tOFF	Turn OFF time	$R_L = 100 \Omega, C_L = 60 \mu F$			5	μ s
VIN = 1.8 V						
tON	Turn ON time	$R_L = 100 \Omega, C_L = 60 \mu F$			255	μ s
tRISE	Rise time	$R_L = 100 \Omega, C_L = 60 \mu F$		95		μ s
tD	Delay time	$R_L = 100 \Omega, C_L = 60 \mu F$		30		μ s
tFALL	Fall time	$R_L = 100 \Omega, C_L = 60 \mu F$		900		μ s
tOFF	Turn OFF time	$R_L = 100 \Omega, C_L = 60 \mu F$			5	μ s
VIN = 1.0 V						
tON	Turn ON time	$R_L = 100 \Omega, C_L = 60 \mu F$			200	μ s
tRISE	Rise time	$R_L = 100 \Omega, C_L = 60 \mu F$		60		μ s
tD	Delay time	$R_L = 100 \Omega, C_L = 60 \mu F$		27		μ s
tFALL	Fall time	$R_L = 100 \Omega, C_L = 60 \mu F$		800		μ s
tOFF	Turn OFF time	$R_L = 100 \Omega, C_L = 60 \mu F$			5	μ s
VIN = 0.78 V						
tON	Turn ON time	$R_L = 100 \Omega, C_L = 60 \mu F$			182	μ s
tRISE	Rise time	$R_L = 100 \Omega, C_L = 60 \mu F$		40		μ s
tD	Delay time	$R_L = 100 \Omega, C_L = 60 \mu F$		30		μ s
tFALL	Fall time	$R_L = 100 \Omega, C_L = 60 \mu F$		780		μ s
tOFF	Turn OFF time	$R_L = 100 \Omega, C_L = 60 \mu F$			5	μ s
VIN = 0.5 V						
tON	Turn ON time	$R_L = 100 \Omega, C_L = 60 \mu F$			170	μ s
tRISE	Rise time	$R_L = 100 \Omega, C_L = 60 \mu F$		30		μ s
tD	Delay time	$R_L = 100 \Omega, C_L = 60 \mu F$		27		μ s
tFALL	Fall time	$R_L = 100 \Omega, C_L = 60 \mu F$		750		μ s
tOFF	Turn OFF time	$R_L = 100 \Omega, C_L = 60 \mu F$			5	μ s

5.9 Timing Diagrams

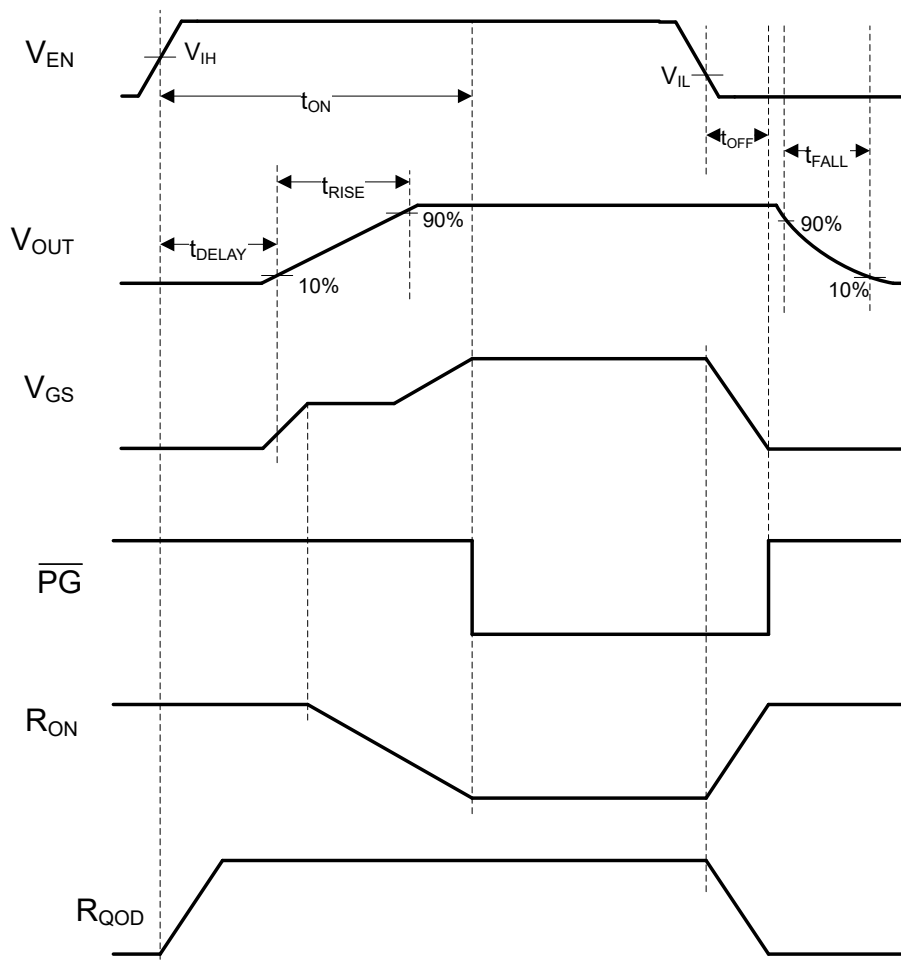
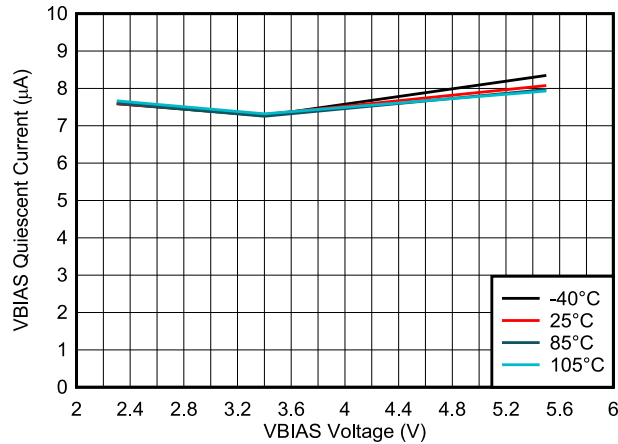
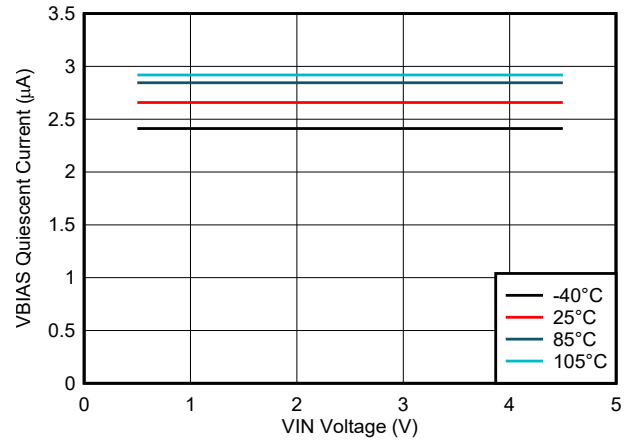


図 5-1. TPS22999 Timing Diagram

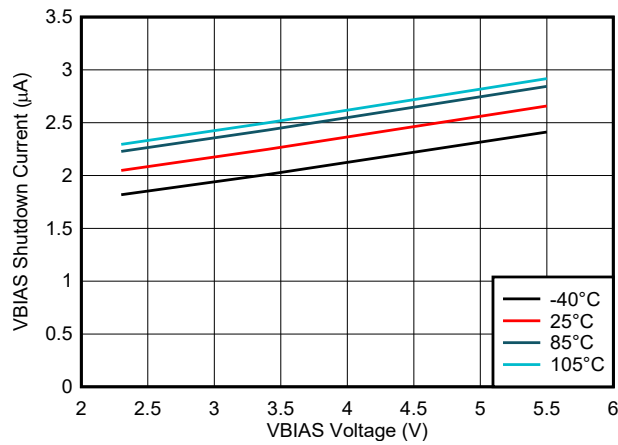
5.10 Typical Characteristics



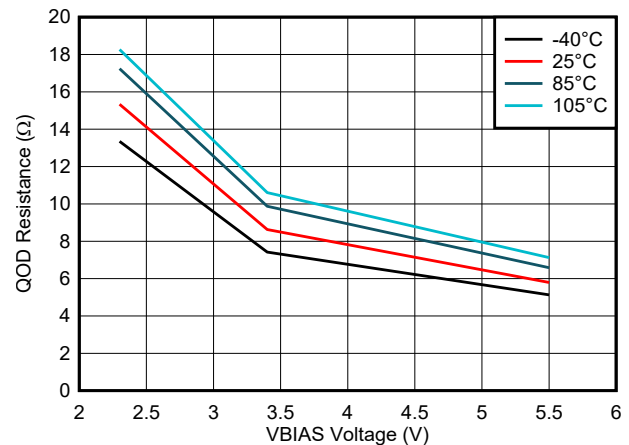
EN > V_{IH}
 5-2. VBIAS Quiescent Current vs VBIAS Voltage



EN > V_{IH} VOUT = Open
 5-3. VBIAS Quiescent Current vs VIN Voltage



EN = 0 V
 5-4. VBIAS Shutdown Current vs VBIAS Voltage



EN = 0 V
 5-5. QOD Resistance vs VBIAS Voltage

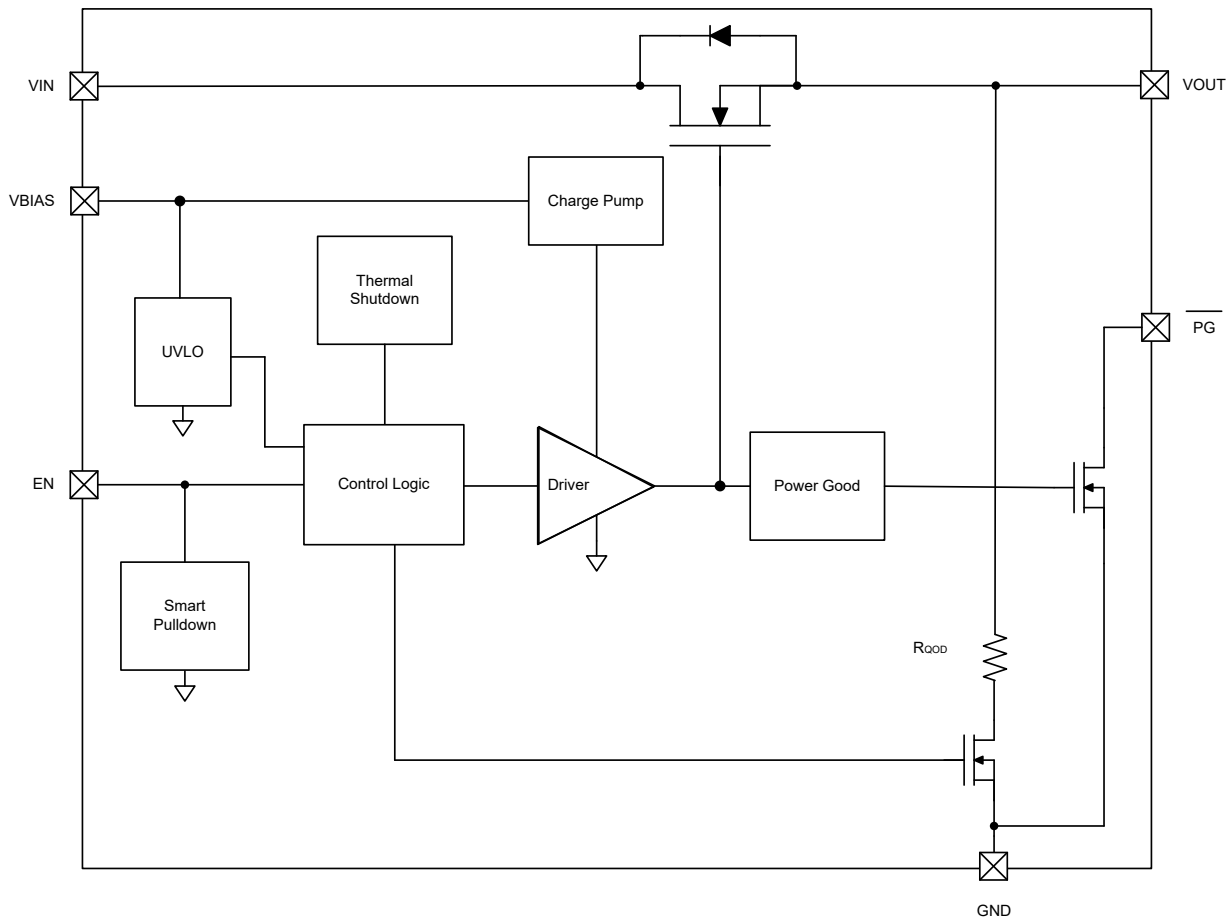
6 Detailed Description

6.1 Overview

The TPS22999 device is a single-channel load switch with a 7.5-mΩ power MOSFET designed to operate up to 1.5 A. The voltage range is 0.1 V to 4.5 V. The device regulates inrush current upon turn-on while providing a fast turn-on time.

The switch is controlled by an enable pin (EN), which is capable of interfacing directly with low voltage GPIO signals down to the V_{IH} level of 0.8 V. The TPS22999 device has an integrated 10-Ω quick output discharge when switch is turned off. There is a Power-Good (\overline{PG}) signal on the device that indicates when the main MOSFET is fully turned on and the on-resistance is at final value.

6.2 Functional Block Diagram



6.3 Feature Description

6.3.1 ON and OFF Control

The EN pin controls the state of the switch. The EN pin is compatible with standard GPIO logic threshold so the EN pin can be used in a wide variety of applications. When power is first applied to VIN, a Smart Pulldown is used to keep the EN pin from floating until the system sequencing is complete. After the EN pin is deliberately driven high ($\geq V_{IH}$), the Smart Pulldown is disconnected to prevent unnecessary power loss. See the following table for when the EN Pin Smart Pulldown is active.

EN Pin Voltage	EN Pin Function
$\leq V_{IL}$	Pulldown active
$\geq V_{IH}$	No pulldown

6.3.2 Regulated Inrush Current

Depending on the rise time at power-up, output load capacitances can cause large inrush currents that are limited only by parasitic resistance and inductances present in wiring and interconnections. These high currents can cause input voltage supply droop which can harm or cause malfunction in other circuits in the system.

To prevent these problems, TPS22999 regulates the inrush current (I_{INRUSH}) to a 1-A typical during the turn-on phase. This regulation enables the system to operate reliably while maintaining a fast turn-on time.

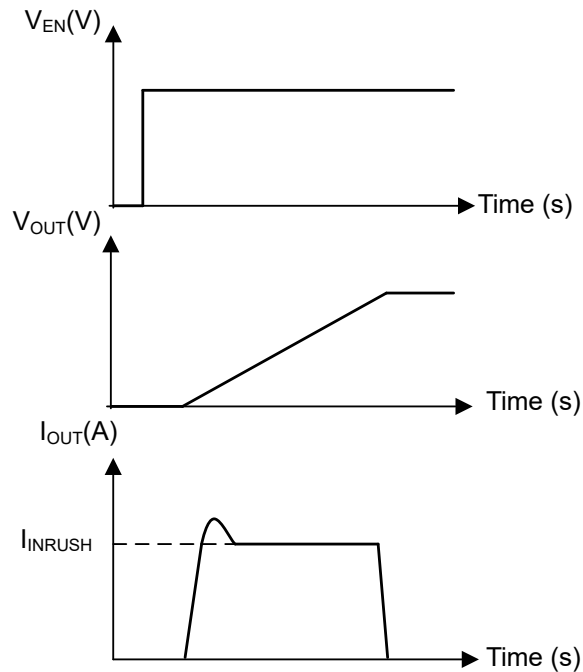


図 6-1. Regulated Inrush Current Behavior

6.3.3 Integrated Quick Output Discharge

TPS22999 integrates Quick Output Discharge (QOD). When the switch is disabled, a discharge resistor is connected between V_{OUT} and GND. This resistor has a typical value of 10 Ω and prevents the output from floating while the switch is disabled while helping safely discharge output capacitances to ground.

6.3.4 Thermal Shutdown

When the device temperature reaches 131°C (typical), the device latches itself off to prevent thermal damage. The \overline{PG} pin is deasserted to signal the output has been latched off. While T_J is over the T_{ABS} threshold, the output remains disabled even if the EN pin is toggled. After T_J decreases below the T_{ABS} threshold, the device does not enable the channel until the EN pin is toggled.

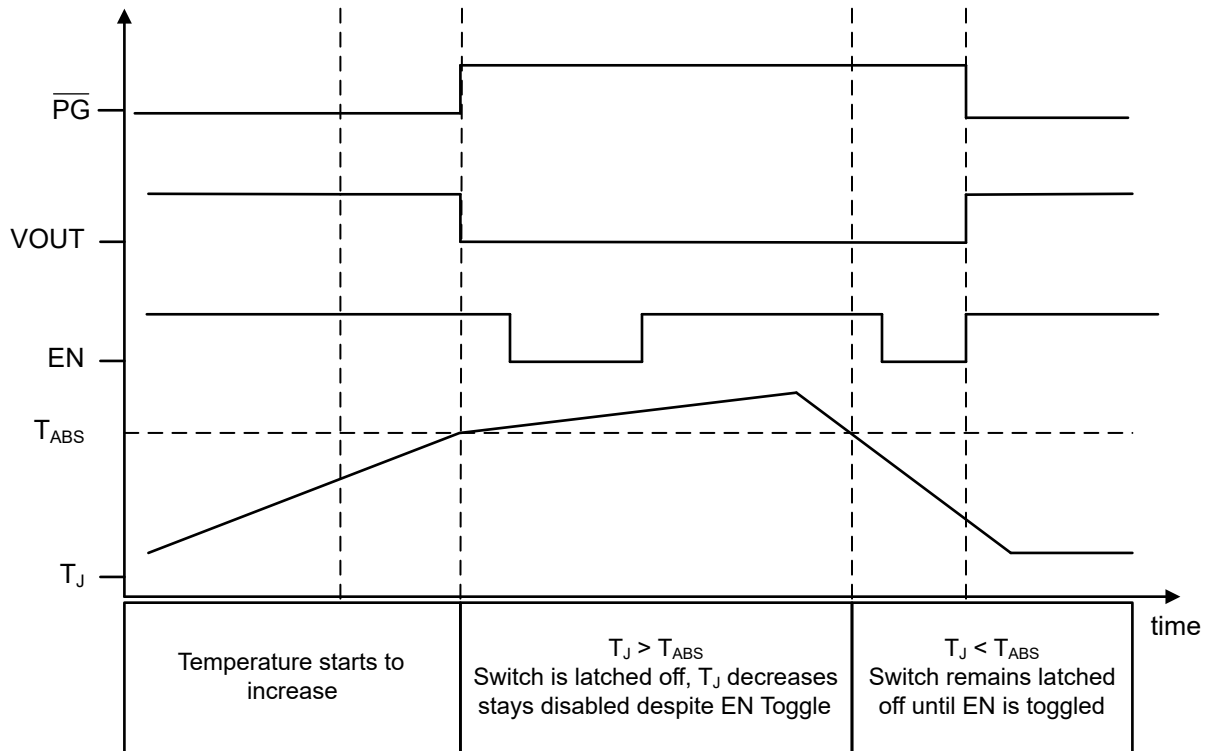


图 6-2. Thermal Shutdown Behavior

6.3.5 Power-Good (PG) Signal

The TPS22999 device has a Power-Good (\overline{PG}) output signal to indicate the gate of the pass FET is driven high and the switch is on with the on-resistance close to final value (full load ready). The signal is an active low and open drain output which can be connected to a voltage source through an external pullup resistor, R_{PU} . This voltage source can be VOUT from the TPS22999 device or another external voltage. VBIAS is required for PG to have a valid output.

6.4 Device Functional Modes

The following table summarizes the device functional modes:

EN	Fault Condition	VOUT State	nPG
L	N/A	Hi-Z	Hi-Z
H	None	V_{IN} (through R_{ON})	LO
X	Thermal shutdown	Hi-Z	Hi-Z

7 Application and Implementation

注

Information in the following applications sections is not part of the TI component specification, and TI does not warrant its accuracy or completeness. TI's customers are responsible for determining suitability of components for their purposes, as well as validating and testing their design implementation to confirm system functionality.

7.1 Application Information

This section highlights some of the design considerations when implementing this device in various applications.

7.2 Typical Application

This typical application demonstrates how to use the TPS22999 device to limit start-up inrush current.

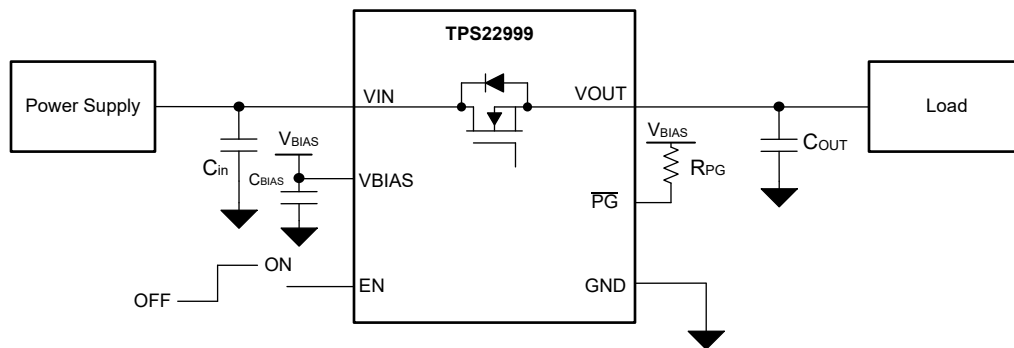


図 7-1. TPS22999 Basic Application

表 7-1. Component Descriptions

DESIGN PARAMETER	TYPICAL VALUES	DESCRIPTION
C_{IN}	1 μ F	Filtering voltage transients
C_{OUT}	100 nF	Filtering voltage transients
C_{BIAS}	0.1 μ F	Filtering voltage transients and noises
R_{PG}	10 k Ω	Pullup resistor for the open-drain output

7.2.1 Design Requirements

For this example, the values below are used as the design parameters.

表 7-2. Design Parameters

PARAMETER	VALUE
V_{BIAS}	3.4 V
V_{IN}	1.8 V
Load capacitance	60 μ F
Inrush current	1 A

7.2.2 Detailed Design Procedure

When the switch is enabled, the switch charges up the output capacitance from 0 V to the set value (1.8 V in this example). This charge arrives in the form of inrush current. As the inrush current is controlled by the device, the time to fully charge up a capacitor can be calculated with the following formula:

$$t_{\text{charge}} = V_{\text{IN}} / I_{\text{inrush}} \times C_{\text{L}}$$

where:

- C_{L} is the output capacitance.
- I_{inrush} is the inrush current limited internally by the device
- V_{IN} is the input voltage

The TPS22999 offers an internally set inrush current limit (0.9-A typical with 3.4-V V_{BIAS}), which allows the customer to calculate the time to fully charge up a load capacitance.

$$t_{\text{charge}} = 1.8 \text{ V} / 0.9 \text{ A} \times 60 \text{ }\mu\text{F} \tag{1}$$

$$t_{\text{charge}} = 130 \text{ }\mu\text{s} \tag{2}$$

With TPS22999, the time to charge up a 60- μF capacitor to 1.8-V V_{IN} voltage is 130- μs typical at 3.4-V V_{BIAS} voltage.

7.3 Power Supply Recommendations

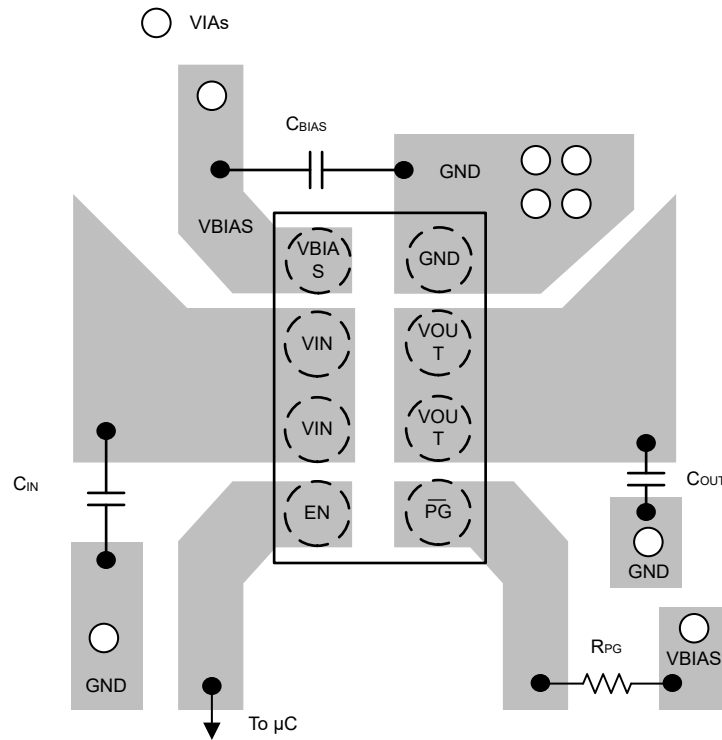
The TPS22999 device is designed to operate with a V_{IN} range of 0.1 V to $V_{\text{BIAS}} - 1$ V. Regulate the V_{IN} power supply well and place as close to the device terminal as possible. The power supply must be able to withstand all transient load current steps. In most situations, using an input capacitance (C_{IN}) of 1 μF is sufficient to prevent the supply voltage from dipping when the switch is turned on. In cases where the power supply is slow to respond to a large transient current or large load current step, additional bulk capacitance can be required on the input. TI recommends to connect a 0.1- μF capacitance to V_{BIAS} .

7.4 Layout

7.4.1 Layout Guidelines

For best performance, all traces must be as short as possible. To be most effective, place the input and output capacitors close to the device to minimize the effects that parasitic trace inductances can have on normal operation. Using wide traces for V_{IN} , V_{OUT} , and GND helps minimize the parasitic electrical effects.

7.4.2 Layout Example



☒ 7-2. TPS22999 Layout Example

8 Device and Documentation Support

8.1 ドキュメントの更新通知を受け取る方法

ドキュメントの更新についての通知を受け取るには、www.tij.co.jp のデバイス製品フォルダを開いてください。[通知] をクリックして登録すると、変更されたすべての製品情報に関するダイジェストを毎週受け取ることができます。変更の詳細については、改訂されたドキュメントに含まれている改訂履歴をご覧ください。

8.2 サポート・リソース

テキサス・インスツルメンツ E2E™ サポート・フォーラムは、エンジニアが検証済みの回答と設計に関するヒントをエキスパートから迅速かつ直接得ることができる場所です。既存の回答を検索したり、独自の質問をしたりすることで、設計に必要な支援を迅速に得ることができます。

リンクされているコンテンツは、各寄稿者により「現状のまま」提供されるものです。これらはテキサス・インスツルメンツの仕様を構成するものではなく、必ずしもテキサス・インスツルメンツの見解を反映したものではありません。テキサス・インスツルメンツの[使用条件](#)を参照してください。

8.3 Trademarks

テキサス・インスツルメンツ E2E™ is a trademark of Texas Instruments.

すべての商標は、それぞれの所有者に帰属します。

8.4 静電気放電に関する注意事項



この IC は、ESD によって破損する可能性があります。テキサス・インスツルメンツは、IC を取り扱う際には常に適切な注意を払うことを推奨します。正しい取り扱いおよび設置手順に従わない場合、デバイスを破損するおそれがあります。

ESD による破損は、わずかな性能低下からデバイスの完全な故障まで多岐にわたります。精密な IC の場合、パラメータがわずかに変化するだけで公表されている仕様から外れる可能性があるため、破損が発生しやすくなっています。

8.5 用語集

[テキサス・インスツルメンツ用語集](#) この用語集には、用語や略語の一覧および定義が記載されています。

9 Revision History

資料番号末尾の英字は改訂を表しています。その改訂履歴は英語版に準じています。

Changes from Revision * (September 2023) to Revision A (November 2023)	Page
ドキュメントのステータスを「事前情報」から「量産データ」に変更.....	1

10 Mechanical, Packaging, and Orderable Information

The following pages include mechanical, packaging, and orderable information. This information is the most current data available for the designated devices. This data is subject to change without notice and revision of this document. For browser-based versions of this data sheet, refer to the left-hand navigation.

PACKAGING INFORMATION

Orderable part number	Status (1)	Material type (2)	Package Pins	Package qty Carrier	RoHS (3)	Lead finish/ Ball material (4)	MSL rating/ Peak reflow (5)	Op temp (°C)	Part marking (6)
TPS22999YCHR	Active	Production	DSBGA (YCH) 8	12000 LARGE T&R	Yes	SNAGCU	Level-1-260C-UNLIM	-40 to 105	R
TPS22999YCHR.A	Active	Production	DSBGA (YCH) 8	12000 LARGE T&R	Yes	SNAGCU	Level-1-260C-UNLIM	-40 to 105	R

(1) **Status:** For more details on status, see our [product life cycle](#).

(2) **Material type:** When designated, preproduction parts are prototypes/experimental devices, and are not yet approved or released for full production. Testing and final process, including without limitation quality assurance, reliability performance testing, and/or process qualification, may not yet be complete, and this item is subject to further changes or possible discontinuation. If available for ordering, purchases will be subject to an additional waiver at checkout, and are intended for early internal evaluation purposes only. These items are sold without warranties of any kind.

(3) **RoHS values:** Yes, No, RoHS Exempt. See the [TI RoHS Statement](#) for additional information and value definition.

(4) **Lead finish/Ball material:** Parts may have multiple material finish options. Finish options are separated by a vertical ruled line. Lead finish/Ball material values may wrap to two lines if the finish value exceeds the maximum column width.

(5) **MSL rating/Peak reflow:** The moisture sensitivity level ratings and peak solder (reflow) temperatures. In the event that a part has multiple moisture sensitivity ratings, only the lowest level per JEDEC standards is shown. Refer to the shipping label for the actual reflow temperature that will be used to mount the part to the printed circuit board.

(6) **Part marking:** There may be an additional marking, which relates to the logo, the lot trace code information, or the environmental category of the part.

Multiple part markings will be inside parentheses. Only one part marking contained in parentheses and separated by a "~" will appear on a part. If a line is indented then it is a continuation of the previous line and the two combined represent the entire part marking for that device.

Important Information and Disclaimer:The information provided on this page represents TI's knowledge and belief as of the date that it is provided. TI bases its knowledge and belief on information provided by third parties, and makes no representation or warranty as to the accuracy of such information. Efforts are underway to better integrate information from third parties. TI has taken and continues to take reasonable steps to provide representative and accurate information but may not have conducted destructive testing or chemical analysis on incoming materials and chemicals. TI and TI suppliers consider certain information to be proprietary, and thus CAS numbers and other limited information may not be available for release.

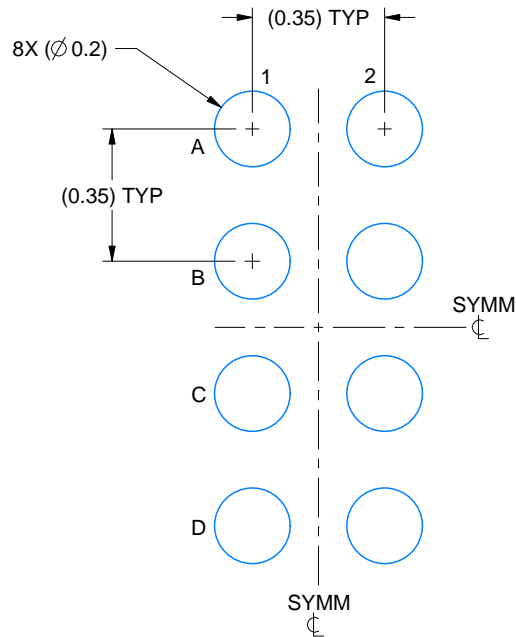
In no event shall TI's liability arising out of such information exceed the total purchase price of the TI part(s) at issue in this document sold by TI to Customer on an annual basis.

EXAMPLE BOARD LAYOUT

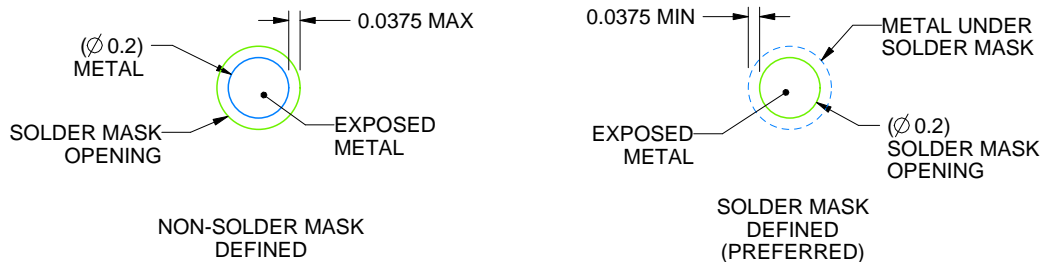
YCH0008

DSBGA - 0.4 mm max height

DIE SIZE BALL GRID ARRAY



LAND PATTERN EXAMPLE
EXPOSED METAL SHOWN
SCALE: 50X



SOLDER MASK DETAILS
NOT TO SCALE

4225328/B 06/2023

NOTES: (continued)

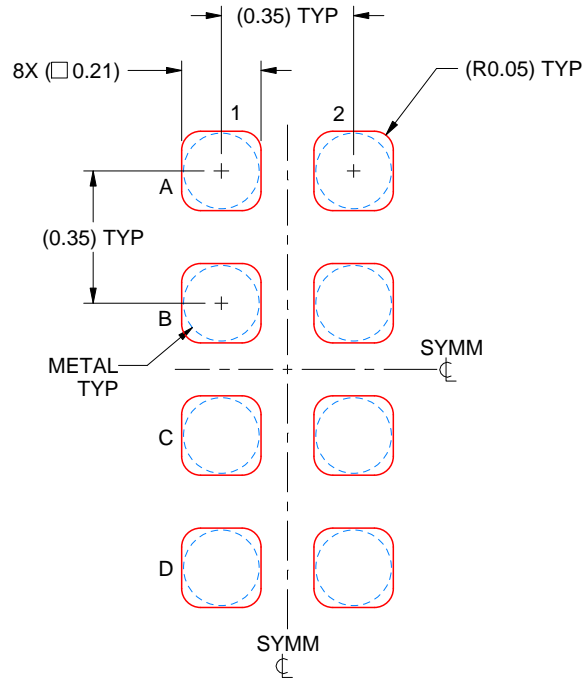
- Final dimensions may vary due to manufacturing tolerance considerations and also routing constraints. See Texas Instruments Literature No. SNVA009 (www.ti.com/lit/snva009).

EXAMPLE STENCIL DESIGN

YCH0008

DSBGA - 0.4 mm max height

DIE SIZE BALL GRID ARRAY



SOLDER PASTE EXAMPLE
BASED ON 0.075 mm THICK STENCIL
SCALE: 50X

4225328/B 06/2023

NOTES: (continued)

4. Laser cutting apertures with trapezoidal walls and rounded corners may offer better paste release.

重要なお知らせと免責事項

TI は、技術データと信頼性データ (データシートを含みます)、設計リソース (リファレンス デザインを含みます)、アプリケーションや設計に関する各種アドバイス、Web ツール、安全性情報、その他のリソースを、欠陥が存在する可能性のある「現状のまま」提供しており、商品性および特定目的に対する適合性の黙示保証、第三者の知的財産権の非侵害保証を含むいかなる保証も、明示的または黙示的にかかわらず拒否します。

これらのリソースは、TI 製品を使用する設計の経験を積んだ開発者への提供を意図したものです。(1) お客様のアプリケーションに適した TI 製品の選定、(2) お客様のアプリケーションの設計、検証、試験、(3) お客様のアプリケーションに該当する各種規格や、その他のあらゆる安全性、セキュリティ、規制、または他の要件への確実な適合に関する責任を、お客様のみが単独で負うものとし、

上記の各種リソースは、予告なく変更される可能性があります。これらのリソースは、リソースで説明されている TI 製品を使用するアプリケーションの開発の目的でのみ、TI はその使用をお客様に許諾します。これらのリソースに関して、他の目的で複製することや掲載することは禁止されています。TI や第三者の知的財産権のライセンスが付与されている訳ではありません。お客様は、これらのリソースを自身で使用した結果発生するあらゆる申し立て、損害、費用、損失、責任について、TI およびその代理人を完全に補償するものとし、TI は一切の責任を拒否します。

TI の製品は、[TI の販売条件](#)、[TI の総合的な品質ガイドライン](#)、[ti.com](#) または TI 製品などに関連して提供される他の適用条件に従い提供されます。TI がこれらのリソースを提供することは、適用される TI の保証または他の保証の放棄の拡大や変更を意味するものではありません。TI がカスタム、またはカスタマー仕様として明示的に指定していない限り、TI の製品は標準的なカタログに掲載される汎用機器です。

お客様がいかなる追加条項または代替条項を提案する場合も、TI はそれらに異議を唱え、拒否します。

Copyright © 2026, Texas Instruments Incorporated

最終更新日 : 2025 年 10 月