



**PMP9145/6 TPS53513/5 Project  
9/17/13**

The tests performed were as follows:

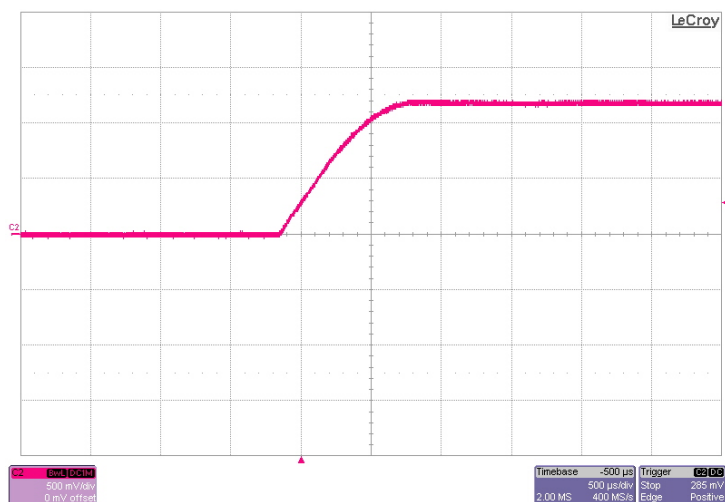
A. TPS53513/5

1. Turn-On (No Load)
2. Switch Node and Output Ripple (Full Load and No Load)
3. Switch Node Jitter (Full Load and No Load)
4. Switch Node Ringing (Full Load and No Load)
5. Transient Response (100% and 50% Load Step)
6. Efficiency
7. Load Regulation
8. Board Photo
9. Thermal Images

## 1 Turn On – (TPS53513/5 – No Load)

The photo below shows the startup waveform. The input voltage is 12V, the output is not loaded. The time-base is set to 500us/Division.

Channel 2 – Pink : Output Voltage – (500mV/Division)

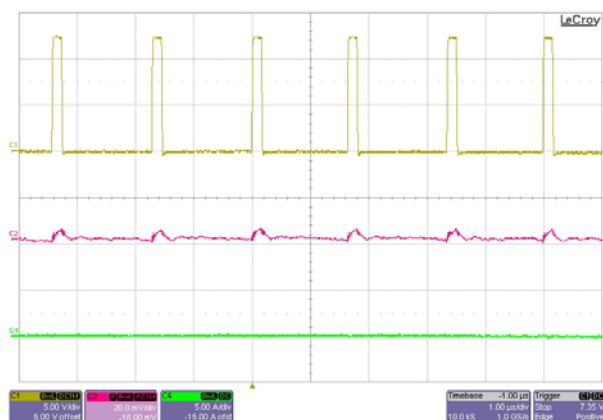


## 2 Switch Node and Output Ripple – (TPS53513/5 – 1.2V @ 12A)

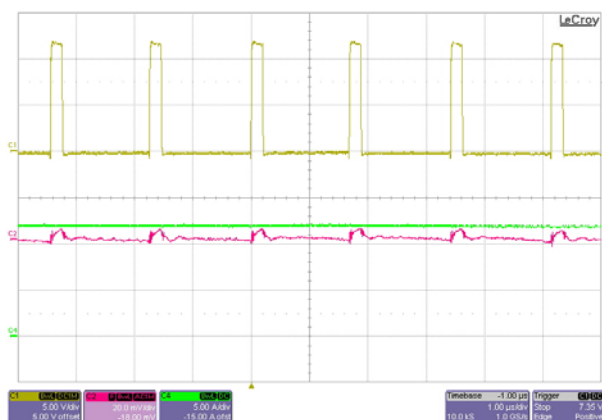
The pictures below show the switching waveform for the converter. The input voltage is 12V.

Channel 1 – Yellow : Switch Node – (5V/Division)

Channel 4 – Green : Output Current – (10A/Division)



No Load



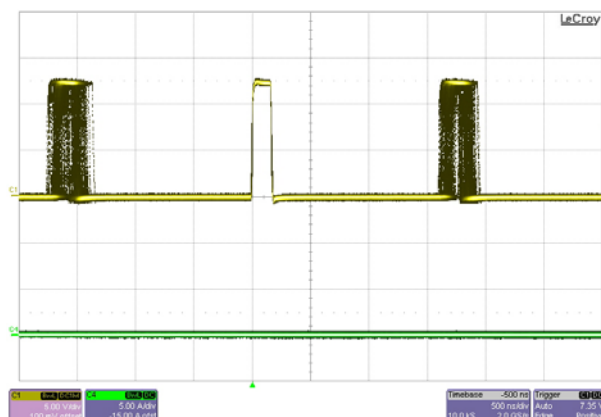
12A Load

## 3 Switch Node Jitter – (TPS53513/5 – 1.2V @ 12A)

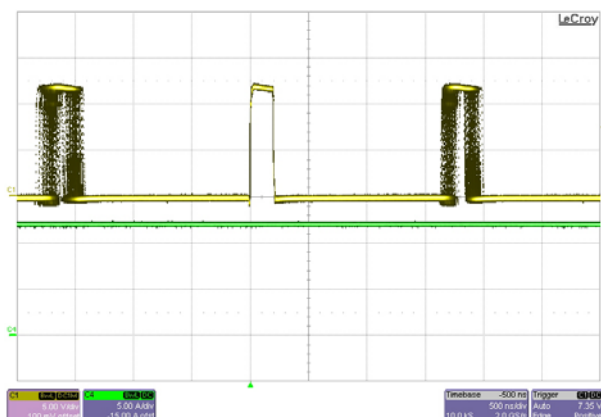
The pictures below show the switch node jitter. The input is 12V.

Channel 1 – Yellow : Switch Node – (5V/Division)

Channel 4 – Green : Output Current – (10A/Division)



No Load



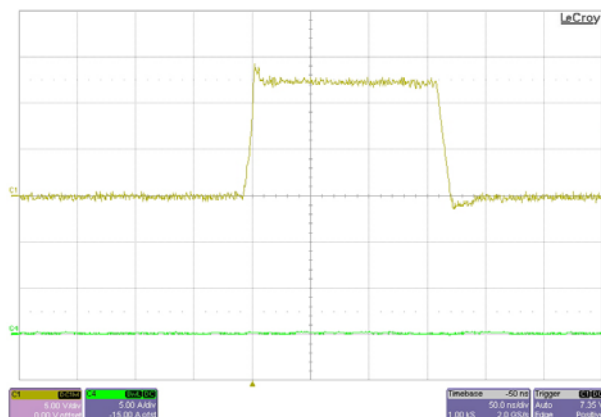
12A Load

## 4 Switch Node Ringing – (TPS53513/5 – 1.2V @ 12A)

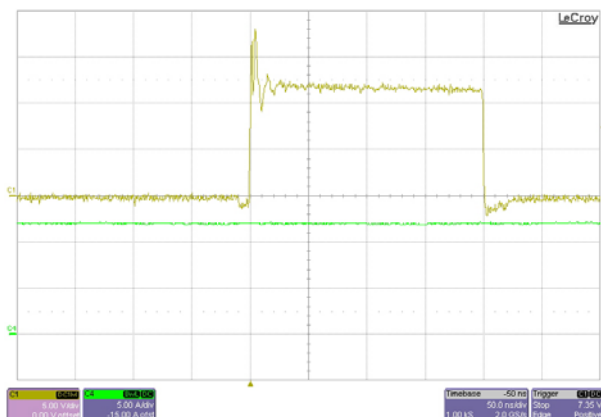
The pictures below show the switch node ringing waveform for the converter. The input voltage is 12V.

Channel 1 – Yellow : Switch Node – (5V/Division)

Channel 4 – Green : Output Current – (10A/Division)



No Load



12A Load

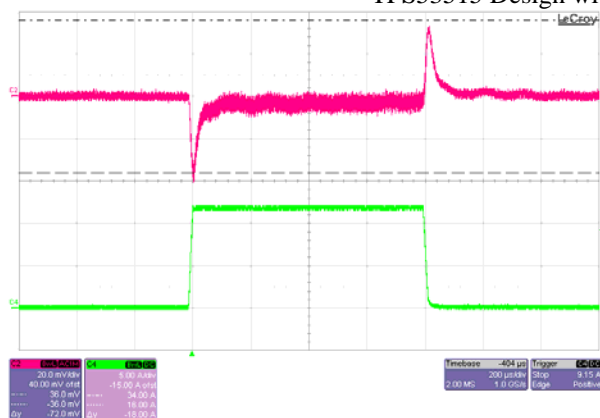
## 5 Transient Response – (TPS53513/5 – 1.2V @ 12A)

The transient response of the converter is shown in the figures below. The input voltage is 12V. All transients below meet the requirement of  $\pm 3\%$  of the output voltage.

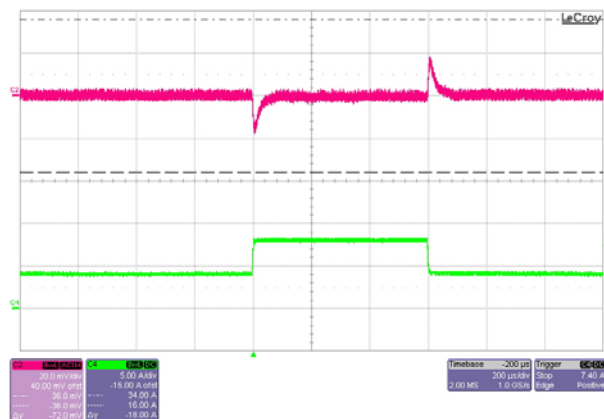
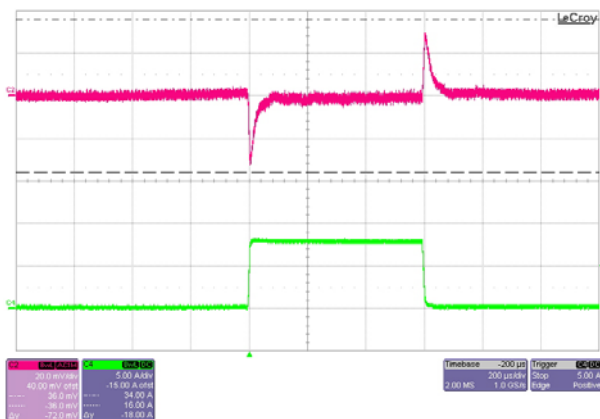
Channel 2 – Pink : Output Voltage : (20mV/Division; AC Coupled)

Channel 4 – Green : Output Current – (5A/Division)

TPS53515 Design with 7 x 100uF Output Caps

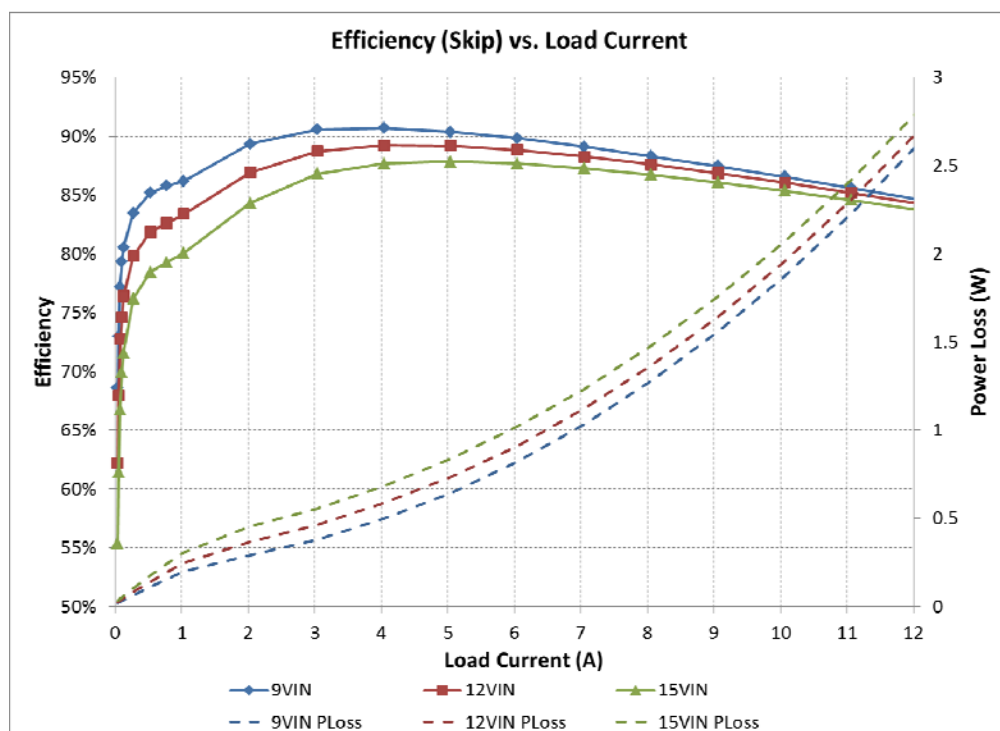
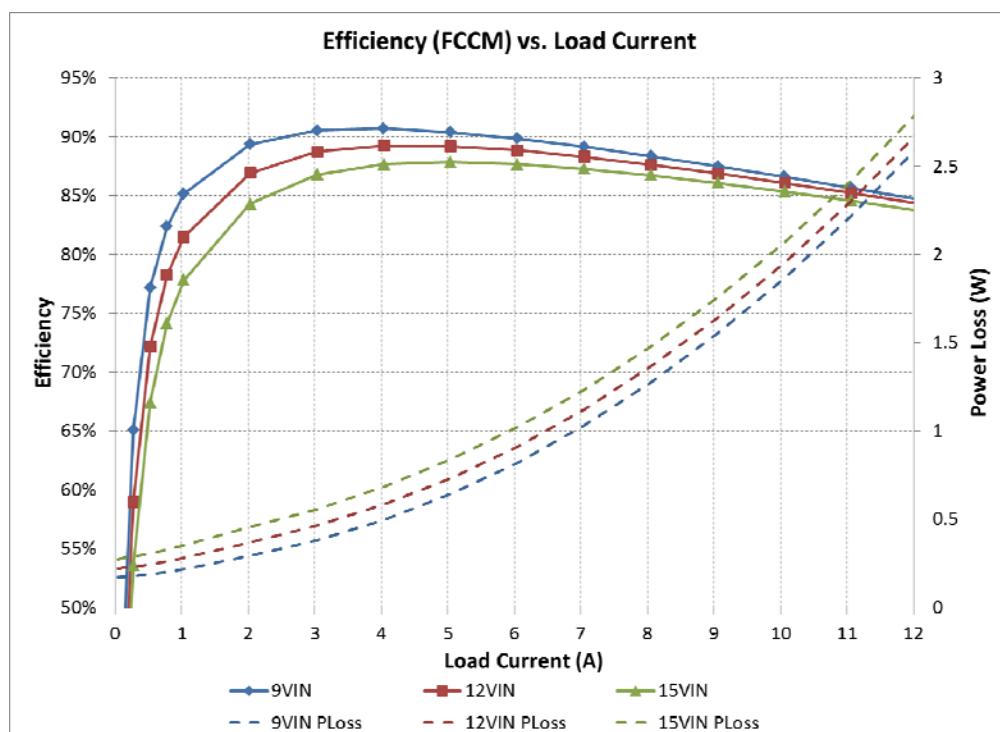


TPS53513 Design with 3 x 100uF Output Caps



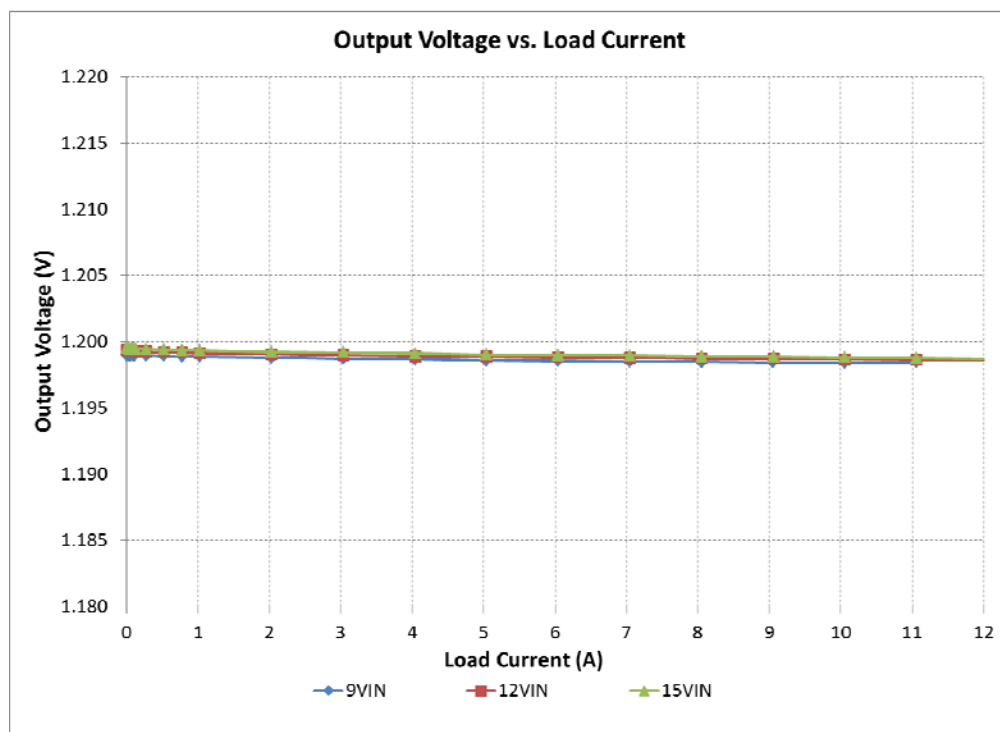
## 6 Efficiency – (TPS53513/5 – 1.2V @ 12A)

The efficiency and power loss of the converter is shown in the picture below.



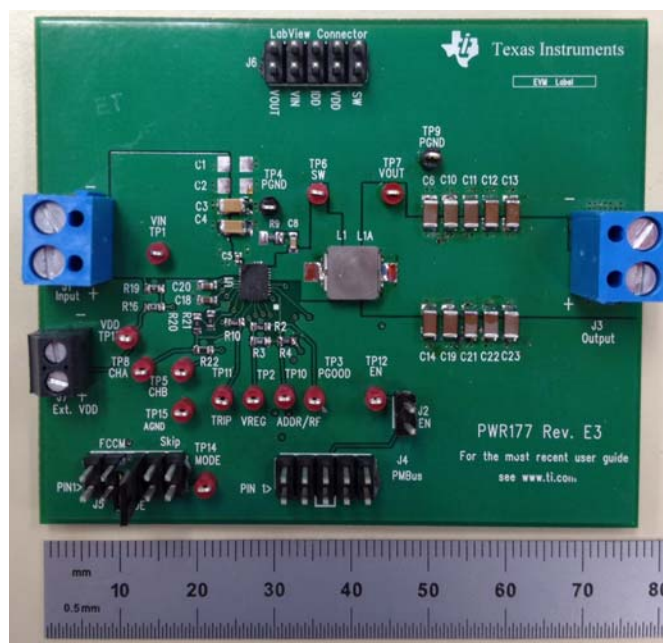
## 7 Load Regulation – (TPS53513/5 – 1.2V @ 12A)

The load regulation is shown in the figure below.



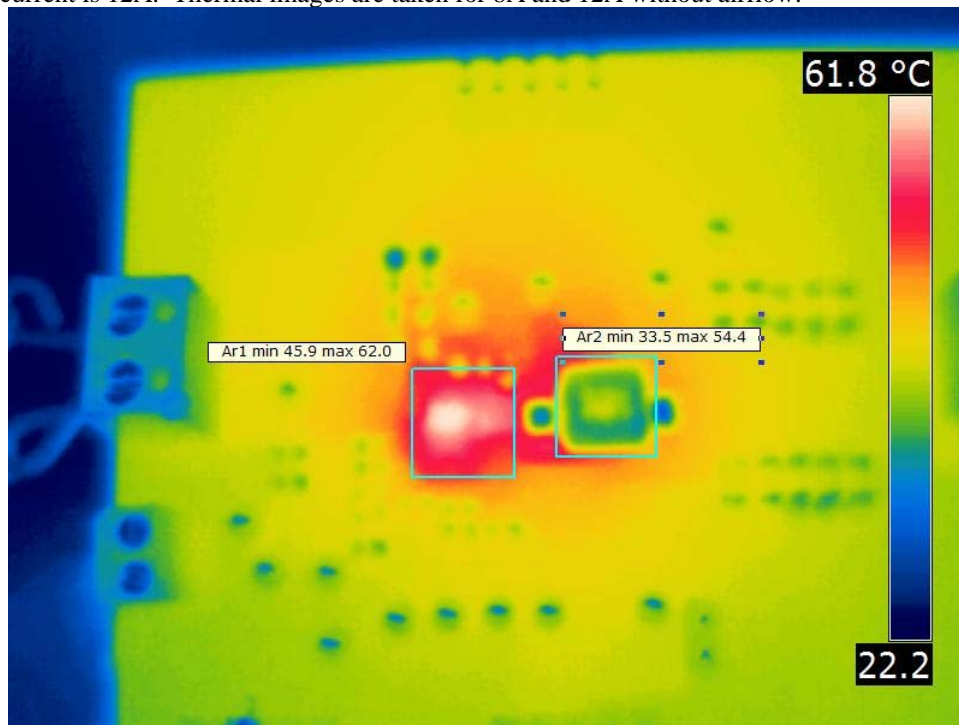
## 8 Board Photo

The photo below shows the PMP9145 board that is used

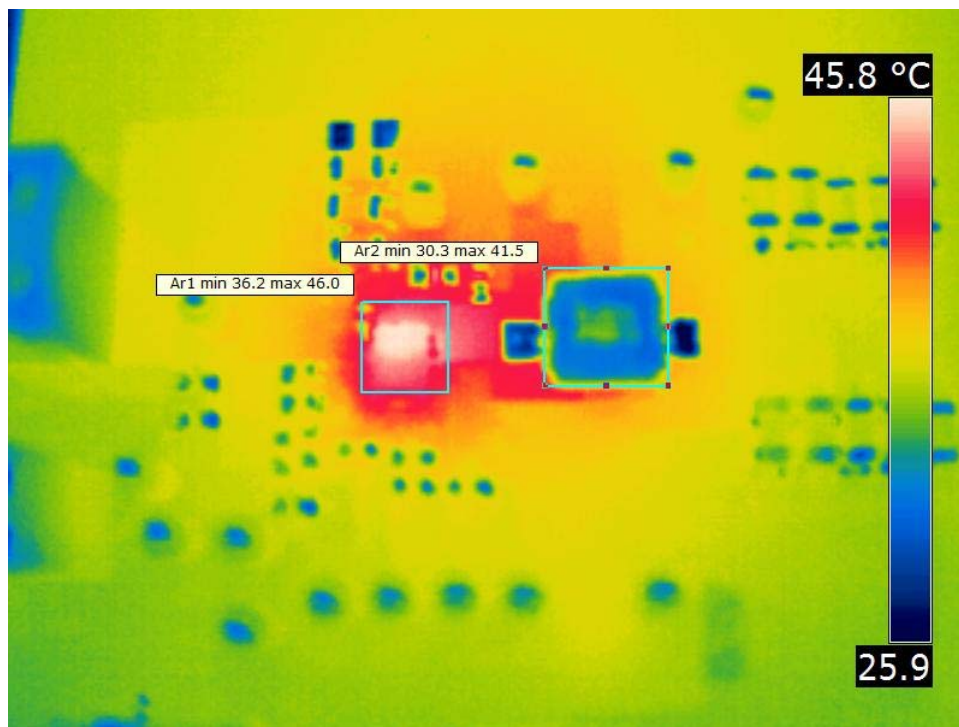


## 9 Thermal Images

The images below show the thermal performance of the design. It is important to note that thermal performance is directly proportional to power loss and board size. Different sized and shaped boards will perform differently. The input voltage is 12V, the output current is 12A. Thermal images are taken for 8A and 12A without airflow.



TPS53515 - 12A Output



TPS53513 - 8A Output

## IMPORTANT NOTICE AND DISCLAIMER

TI PROVIDES TECHNICAL AND RELIABILITY DATA (INCLUDING DATASHEETS), DESIGN RESOURCES (INCLUDING REFERENCE DESIGNS), APPLICATION OR OTHER DESIGN ADVICE, WEB TOOLS, SAFETY INFORMATION, AND OTHER RESOURCES "AS IS" AND WITH ALL FAULTS, AND DISCLAIMS ALL WARRANTIES, EXPRESS AND IMPLIED, INCLUDING WITHOUT LIMITATION ANY IMPLIED WARRANTIES OF MERCHANTABILITY, FITNESS FOR A PARTICULAR PURPOSE OR NON-INFRINGEMENT OF THIRD PARTY INTELLECTUAL PROPERTY RIGHTS.

These resources are intended for skilled developers designing with TI products. You are solely responsible for (1) selecting the appropriate TI products for your application, (2) designing, validating and testing your application, and (3) ensuring your application meets applicable standards, and any other safety, security, or other requirements. These resources are subject to change without notice. TI grants you permission to use these resources only for development of an application that uses the TI products described in the resource. Other reproduction and display of these resources is prohibited. No license is granted to any other TI intellectual property right or to any third party intellectual property right. TI disclaims responsibility for, and you will fully indemnify TI and its representatives against, any claims, damages, costs, losses, and liabilities arising out of your use of these resources.

TI's products are provided subject to TI's Terms of Sale (<https://www.ti.com/legal/termsofsale.html>) or other applicable terms available either on [ti.com](https://www.ti.com) or provided in conjunction with such TI products. TI's provision of these resources does not expand or otherwise alter TI's applicable warranties or warranty disclaimers for TI products.

Mailing Address: Texas Instruments, Post Office Box 655303, Dallas, Texas 75265  
Copyright © 2021, Texas Instruments Incorporated