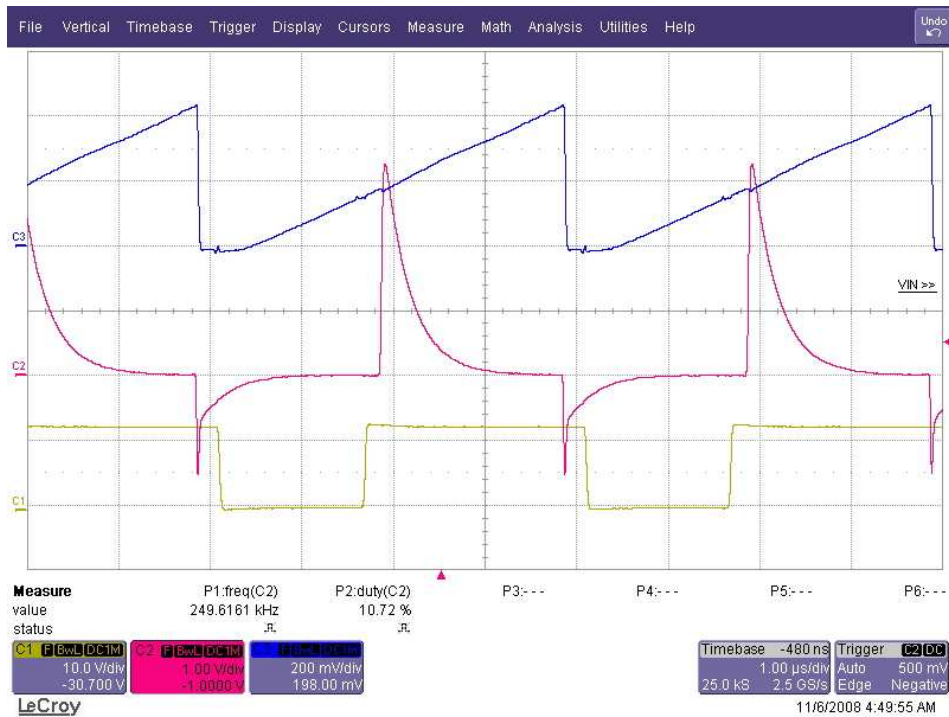


1 Main Waveforms



Synchronization Circuit 1: Out U3-TLC555D (C1), Gate of Q4 (C2), Synch_Master signal (C3)



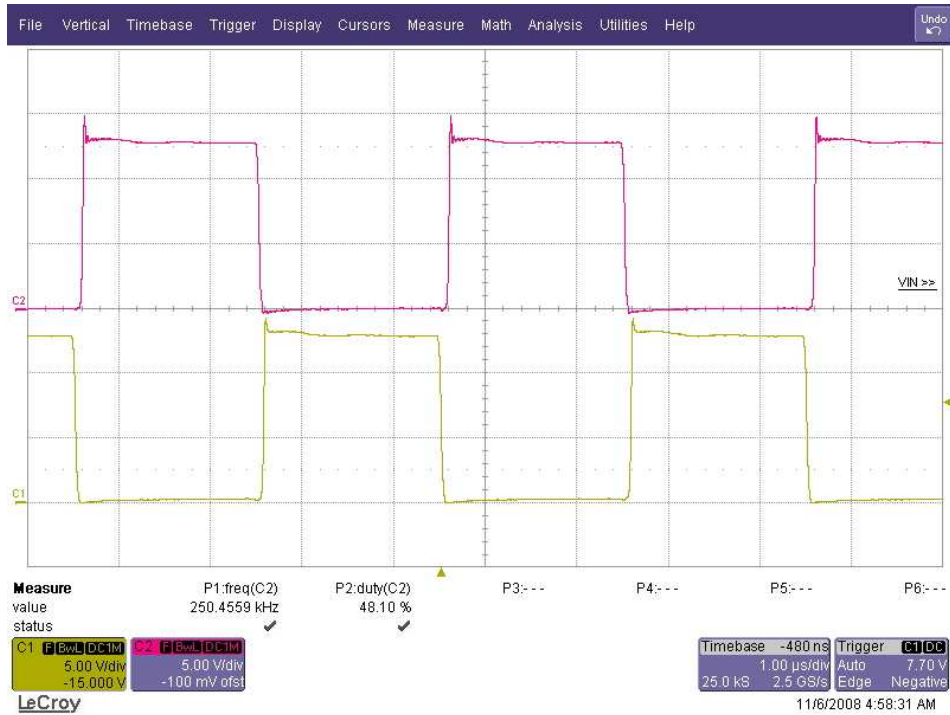
Synchronization Circuit 2: Out U3-TLC555D (C1), Synch_Master signal (C3), Synch Slave (C4)



Current Sharing 1 (Iout<0.5A Vin=9V): VdsQ1, VdsQ2



Current Sharing 2 (Iout<0.15A Vin=6.5V): VdsQ1 (C1), VdsQ2 (C2)

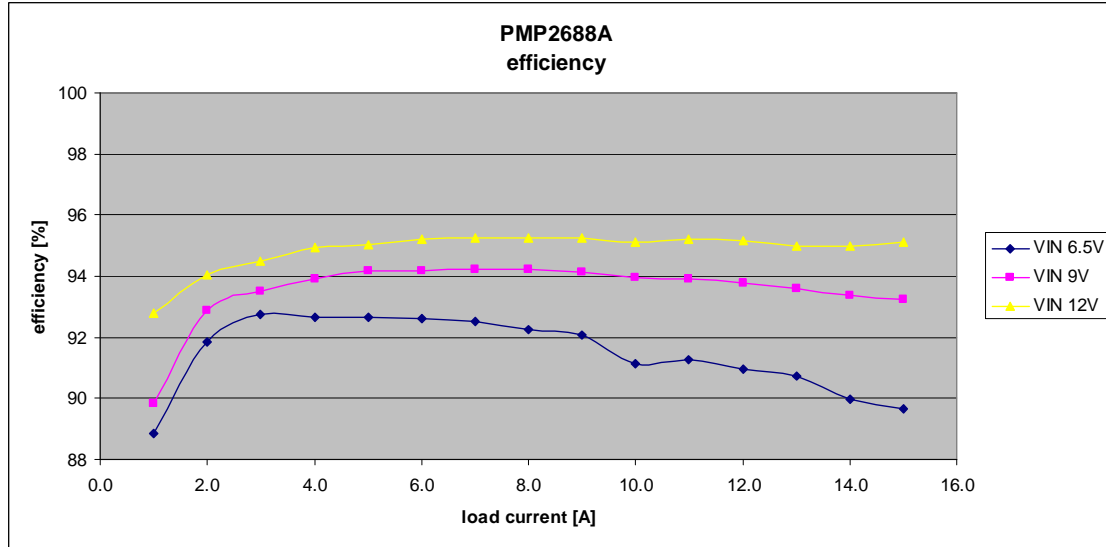


Current Sharing 3 (Iout=10A Vin=6.5V): VdsQ1 (C1), VdsQ2 (C2)



Current Sharing 4 (Vin=9V Iout=5A): CsenseQ1 (C1), Vsense Q2 (C2)

2 Efficiency and Load Regulation



The following table shows the measured values:

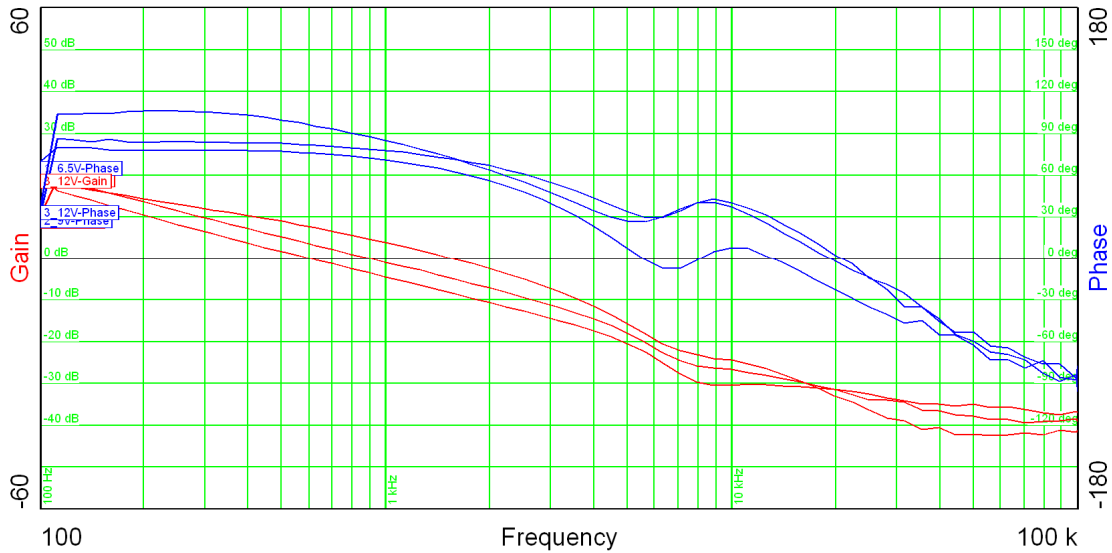
voltage [V]	input current [A]	power [W]	voltage [V]	output current [A]	power [W]	efficiency [%]
6.50	2.14	13.91	12.36	1.00	12.36	88.9
6.50	4.14	26.91	12.36	2.00	24.72	91.9
6.50	6.15	39.98	12.36	3.00	37.08	92.8
6.50	8.21	53.37	12.36	4.00	49.44	92.6
6.50	10.26	66.69	12.36	5.00	61.80	92.7
6.50	12.32	80.08	12.36	6.00	74.16	92.6
6.50	14.39	93.54	12.36	7.00	86.52	92.5
6.50	16.49	107.19	12.36	8.00	98.88	92.3
6.50	18.60	120.90	12.37	9.00	111.33	92.1
6.50	20.88	135.72	12.37	10.00	123.70	91.1
6.50	22.94	149.11	12.37	11.00	136.07	91.3
6.50	25.11	163.22	12.37	12.00	148.44	90.9
6.50	27.28	177.27	12.37	13.00	160.81	90.7
6.48	29.74	192.63	12.38	14.00	173.32	90.0
6.47	32.03	207.11	12.38	15.00	185.70	89.7
9.00	1.53	13.77	12.37	1.00	12.37	89.8
9.00	2.96	26.64	12.37	2.00	24.74	92.9
9.00	4.41	39.69	12.37	3.00	37.11	93.5
9.00	5.85	52.65	12.36	4.00	49.44	93.9
9.00	7.29	65.61	12.36	5.00	61.80	94.2
9.00	8.75	78.75	12.36	6.00	74.16	94.2
9.00	10.21	91.89	12.37	7.00	86.59	94.2
9.00	11.67	105.03	12.37	8.00	98.96	94.2

PMP2688RevA Test Results

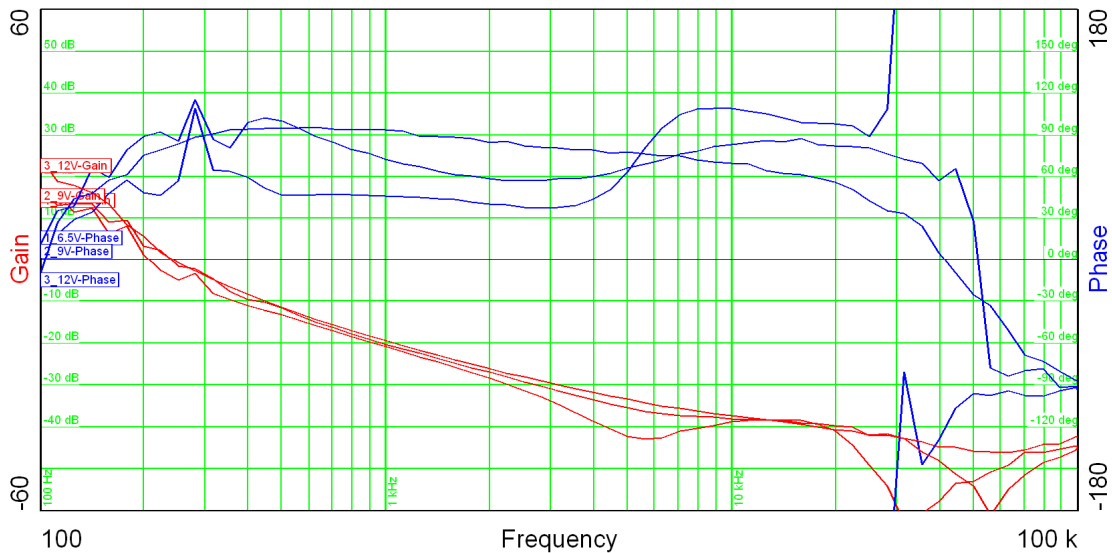
9.00	13.14	118.26	12.37	9.00	111.33	94.1
9.00	14.63	131.67	12.37	10.00	123.70	93.9
8.99	16.11	144.88	12.37	11.00	136.07	93.9
9.00	17.59	158.31	12.37	12.00	148.44	93.8
9.03	19.02	171.79	12.37	13.00	160.81	93.6
9.02	20.55	185.44	12.37	14.00	173.18	93.4
9.02	22.07	199.01	12.37	15.00	185.55	93.2
12.00	1.11	13.32	12.36	1.00	12.36	92.8
12.00	2.19	26.28	12.36	2.00	24.72	94.1
12.00	3.27	39.24	12.36	3.00	37.08	94.5
12.00	4.34	52.08	12.36	4.00	49.44	94.9
12.00	5.42	65.04	12.36	5.00	61.80	95.0
12.00	6.49	77.88	12.36	6.00	74.16	95.2
12.00	7.57	90.84	12.36	7.00	86.52	95.2
12.00	8.65	103.80	12.36	8.00	98.88	95.3
12.00	9.73	116.76	12.36	9.00	111.24	95.3
12.00	10.83	129.96	12.36	10.00	123.60	95.1
12.10	11.80	142.78	12.36	11.00	135.96	95.2
12.10	12.88	155.85	12.36	12.00	148.32	95.2
12.05	14.04	169.18	12.36	13.00	160.68	95.0
12.04	15.13	182.17	12.36	14.00	173.04	95.0
12.04	16.19	194.93	12.36	15.00	185.40	95.1

3 Control Loop Frequency Response

The figures below show the open loop response for 6.5V, 9V, 12V input voltage

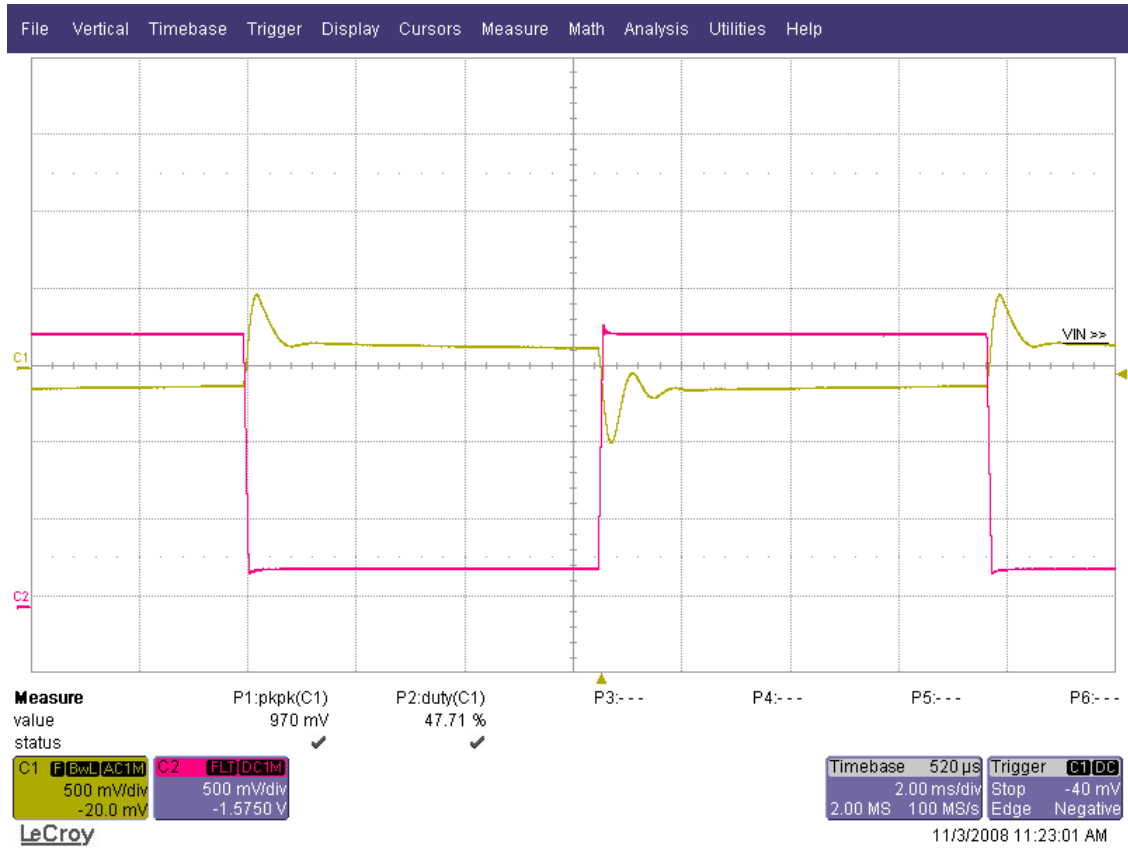


Vin=6.5V, Vin=9V, Vin=12V @ 15A Output



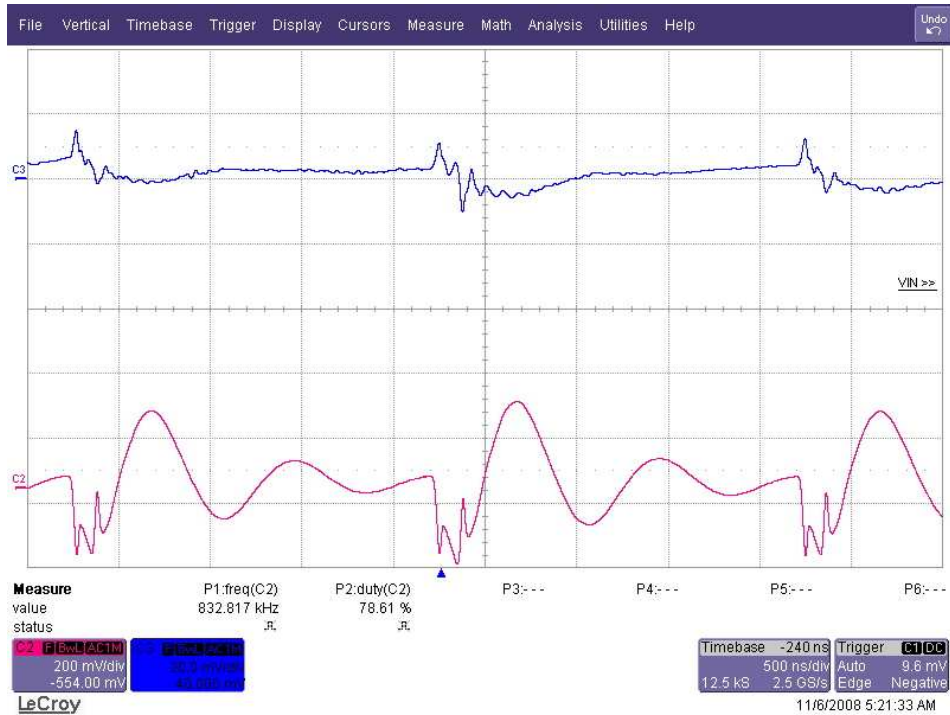
Vin=6.5V, Vin=9V, Vin=12V @ Discontinuous Mode (no load)

4 Load Transients

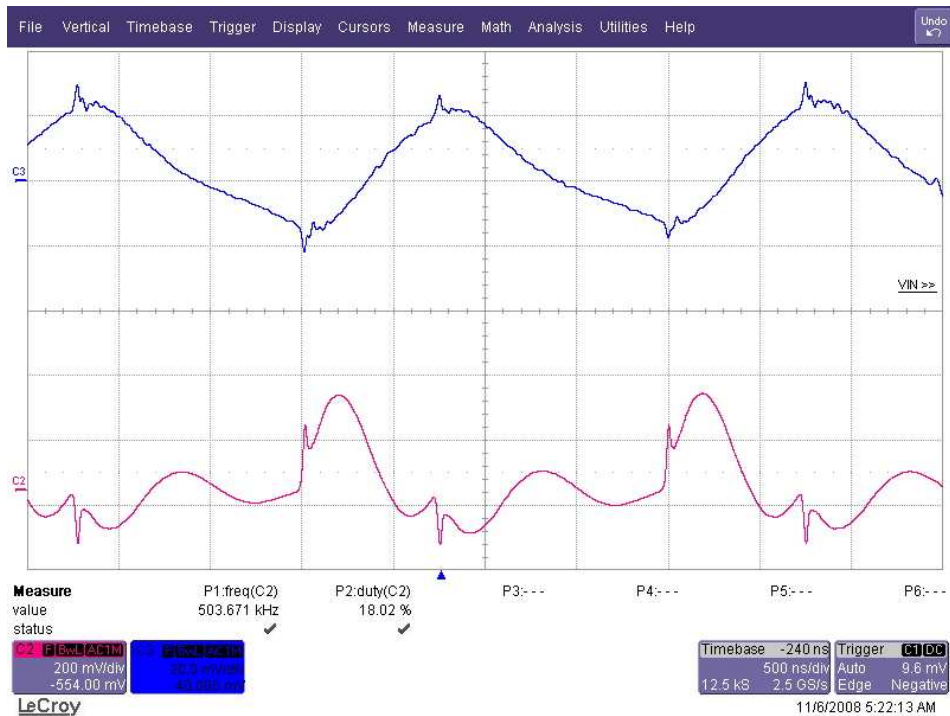


Vout (C1), Iout (C2, 10A/V current probe)

5 Output and Input Ripple Voltage

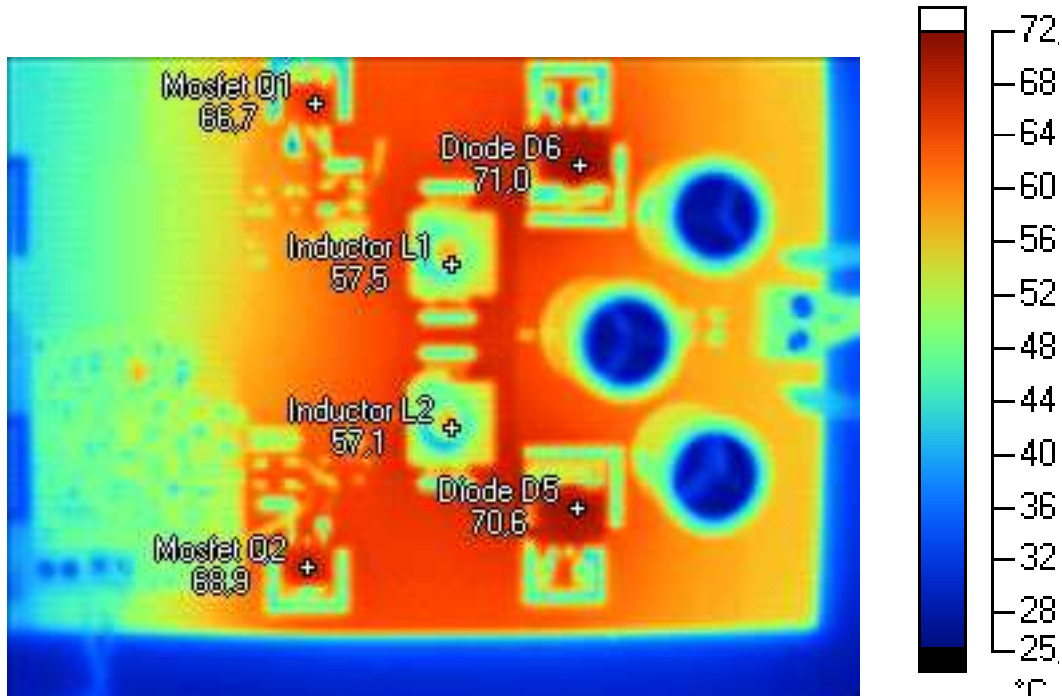


Input Voltage Ripple (C3), Output Voltage Ripple (C2) at full load 15A @ Vin=6.5V



Input Voltage Ripple (C3), Output Voltage Ripple (C2) at full load 15A @ Vin=9V

Thermal Images



Output Power Continuous 10A Vin=6.5V

Markierungen

Beschriftung	Temperatur	Emissionsgrad	Hintergrund
Diode D6	71,0 °C	0,95	20,0 °C
Diode D5	70,6 °C	0,95	20,0 °C
Inductor L2	57,1 °C	0,95	20,0 °C
Mosfet Q2	68,9 °C	0,95	20,0 °C
Mosfet Q1	66,7 °C	0,95	20,0 °C
Inductor L1	57,5 °C	0,95	20,0 °C

IMPORTANT NOTICE AND DISCLAIMER

TI PROVIDES TECHNICAL AND RELIABILITY DATA (INCLUDING DATA SHEETS), DESIGN RESOURCES (INCLUDING REFERENCE DESIGNS), APPLICATION OR OTHER DESIGN ADVICE, WEB TOOLS, SAFETY INFORMATION, AND OTHER RESOURCES "AS IS" AND WITH ALL FAULTS, AND DISCLAIMS ALL WARRANTIES, EXPRESS AND IMPLIED, INCLUDING WITHOUT LIMITATION ANY IMPLIED WARRANTIES OF MERCHANTABILITY, FITNESS FOR A PARTICULAR PURPOSE OR NON-INFRINGEMENT OF THIRD PARTY INTELLECTUAL PROPERTY RIGHTS.

These resources are intended for skilled developers designing with TI products. You are solely responsible for (1) selecting the appropriate TI products for your application, (2) designing, validating and testing your application, and (3) ensuring your application meets applicable standards, and any other safety, security, regulatory or other requirements.

These resources are subject to change without notice. TI grants you permission to use these resources only for development of an application that uses the TI products described in the resource. Other reproduction and display of these resources is prohibited. No license is granted to any other TI intellectual property right or to any third party intellectual property right. TI disclaims responsibility for, and you will fully indemnify TI and its representatives against, any claims, damages, costs, losses, and liabilities arising out of your use of these resources.

TI's products are provided subject to [TI's Terms of Sale](#) or other applicable terms available either on ti.com or provided in conjunction with such TI products. TI's provision of these resources does not expand or otherwise alter TI's applicable warranties or warranty disclaimers for TI products.

TI objects to and rejects any additional or different terms you may have proposed.

Mailing Address: Texas Instruments, Post Office Box 655303, Dallas, Texas 75265
Copyright © 2021, Texas Instruments Incorporated