

AN-1529 LM3430 Evaluation Board

1 Specifications of the Board

The Evaluation Board has been designed for testing of various circuits using the LM3430 boost regulator controller. A complete schematic for all the components is shown in Figure 1. The board is two layers with components and power paths in 1oz. copper. The board is 62mil FR4 laminate.

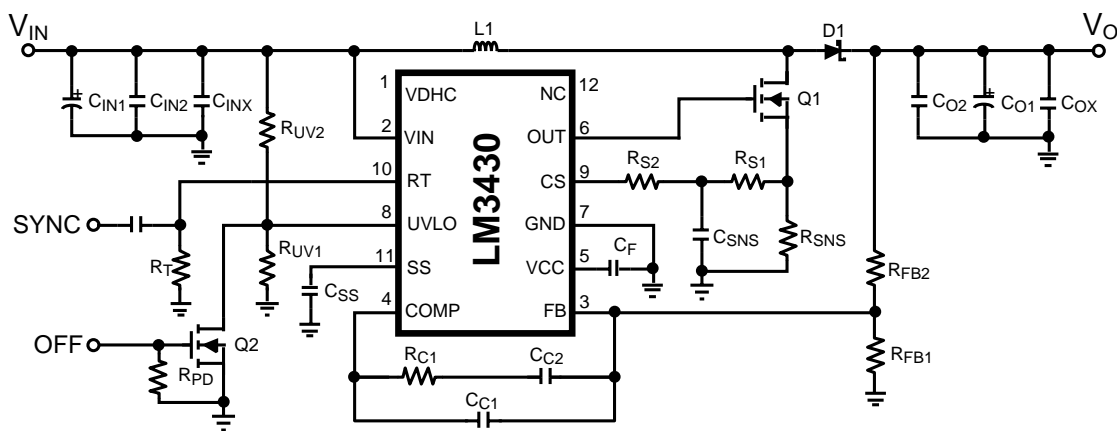


Figure 1. Circuit Schematic

2 Example Circuit

The example circuit that comes on the evaluation board delivers a $48V \pm 2\%$ output voltage at currents up to 700 mA and switches at 600 kHz. The input voltage range is optimized between 10.8V and 26.4V. The measured efficiency of the converter is 96% at an input voltage of 24V and an output current of 0.7A.

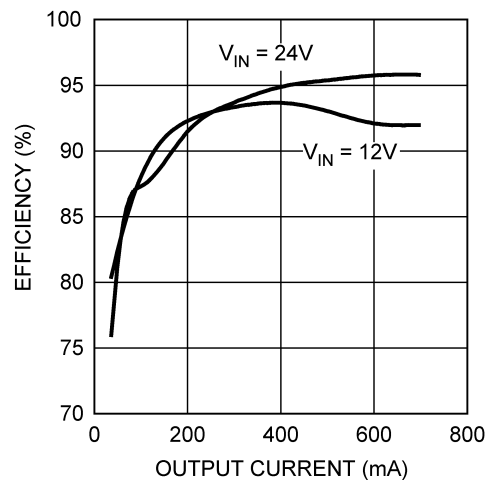


Figure 2. Efficiency

All trademarks are the property of their respective owners.

3 Powering the Converter

The example circuit for the LM3430 Evaluation Board is optimized to run at inputs of 12V or 24V, however the circuit will operate with input voltages ranging from 6.0V to 40.0V connected between the 'VIN' and 'GND' terminals on the right side of the board. Fixed loads, resistors, and variable electronic loads can be connected between the 'Vo' and 'GND' terminals on the left side of the board. [Section 10](#) lists all the components used in the example circuit.

4 Enabling the Converter

The OFF terminal controls the state of the converter while power is applied to the input terminals. The LM340 is disabled whenever the voltage at OFF is a logic high. (Above 2.0V.) The LM3430 is enabled whenever the OFF terminal is open-circuited or connected to ground. Upon enabling the LM3430 will perform a soft-start, after which the output is ready to supply current to the load.

5 Testing the Converter

[Figure 3](#) shows a block diagram of connections for making measurements of efficiency. The wires used for making connections at both the input and output should be rated to at least 10A of continuous current and should be no longer than is needed for convenient testing. A series ammeter capable of measuring 10A or more should be used for both the input and the output lines. Dedicated voltmeters should be connected with their positive and negative leads right at the four power terminals at the sides of the evaluation board. This measurement technique minimizes the resistive loss in the wires that connect the evaluation board to the input power supply and the electronic load.

Output voltage ripple measurements should be taken directly across the 100 nF ceramic capacitor Cox, placed right between the output terminals. Care must be taken to minimize the loop area between the oscilloscope probe tip and the ground lead. One method to minimize this loop is to remove the probe's spring tip and 'pigtail' ground lead and then wind bare wire around the probe shaft. The bare wire should contact the ground of the probe, and the end of the wire can then contact the ground side of Cox. [Figure 4](#) shows a diagram of this method.

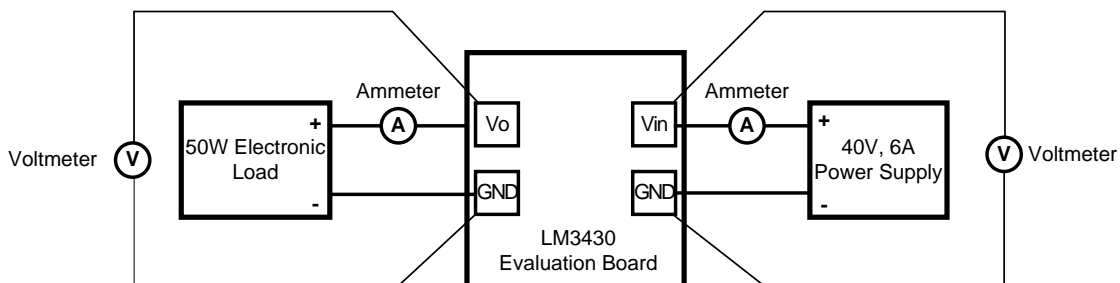


Figure 3. Efficiency Measurement Setup

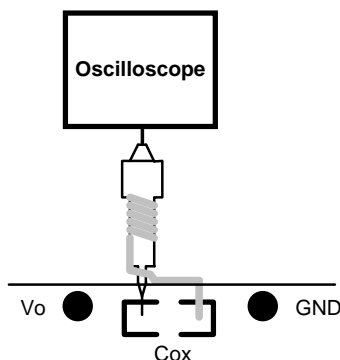


Figure 4. Output Voltage Ripple Measurement Setup

6 MOSFET Footprints

The LM3430 evaluation board has a footprint for a single MOSFET with an SO-8 package using the industry standard pinout. (See [Figure 5](#)). This footprint can also accept newer MOSFET packages that are compatible with SO-8 footprints.

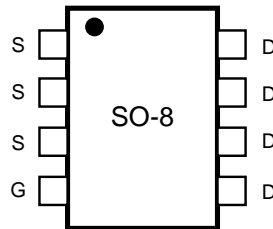


Figure 5. SO-8 MOSFET Pinout

7 Permanent Components

The following components should remain the same for any new circuits evaluated on the LM3430 evaluation board.

Name	Value
Cox, Cinx	0.1 μ F
Cf	1 μ F
Csns	1 nF
Rpd	10 k Ω
Rs1	100 Ω

8 Additional Footprints

The 100 pF capacitor Csync provides an AC input path for external clock synchronization. Detection of the sync pulse requires a peak voltage level greater than 3.8V at the RT/SYNC pin. Note that the DC voltage at RT/SYNC is approximately 2V to allow compatibility with 3.3V logic. The sync pulse width should be set between 15 ns to 150 ns by the external components. The Rt resistor is always required, whether the oscillator is free running or externally synchronized. Rt must be selected so that the free-running oscillator frequency is below the lowest synchronization frequency.

9 Typical Performance Characteristics

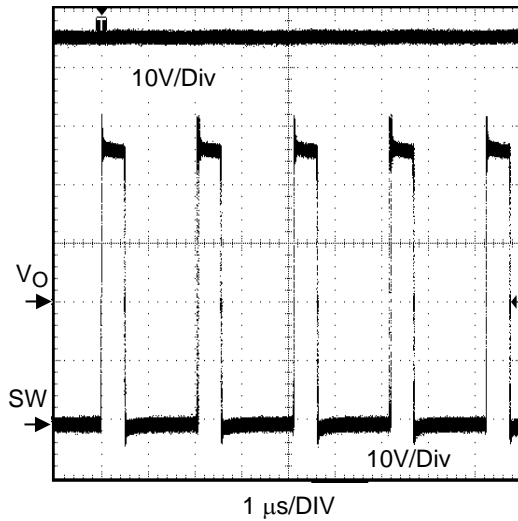


Figure 6. Switch Node Voltage
($V_{IN} = 12V$, $I_o = 0.5A$)

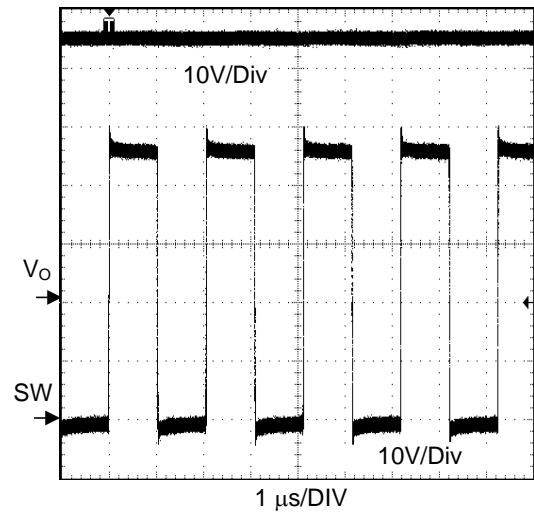


Figure 7. Switch Node Voltage
($V_{IN} = 24V$, $I_o = 0.5A$)

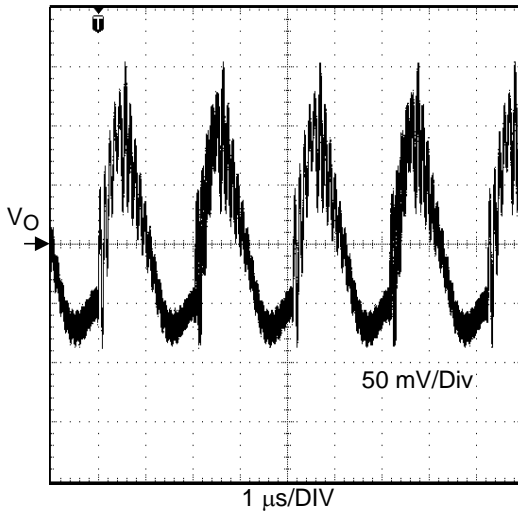


Figure 8. Output Voltage Ripple AC Coupled
($V_{IN} = 12V$, $I_o = 0.5A$)

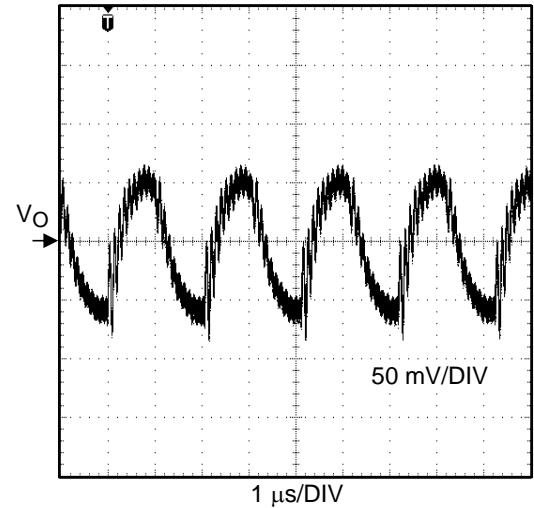


Figure 9. Output Voltage Ripple AC Coupled
($V_{IN} = 24V$, $I_o = 0.5A$)

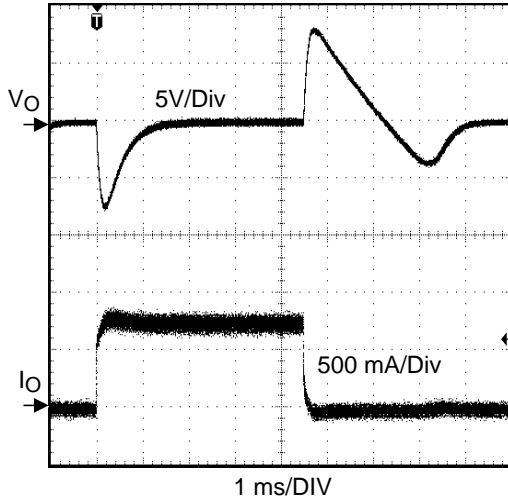


Figure 10. Load Transient Response
($V_{IN} = 12V$, $I_o = 0$ to $0.7A$)

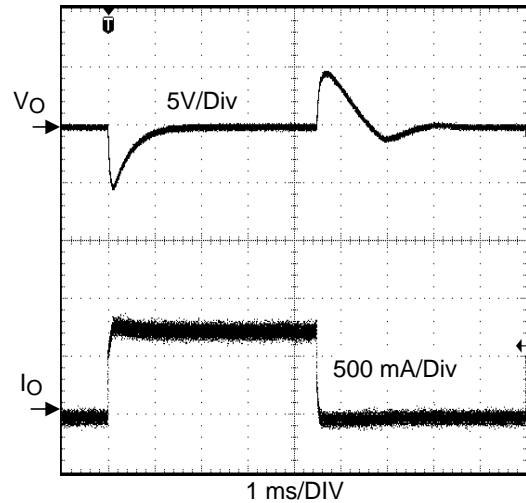


Figure 11. Load Transient Response
($V_{IN} = 24V$, $I_o = 0$ to $0.7A$)

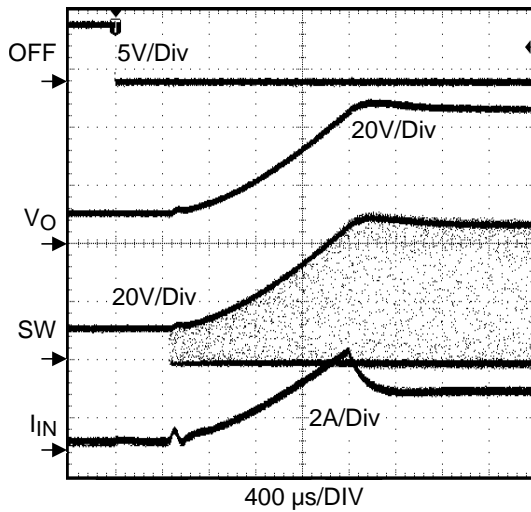


Figure 12. Start Up
($V_{IN} = 12V$, $I_o = 0.5A$)

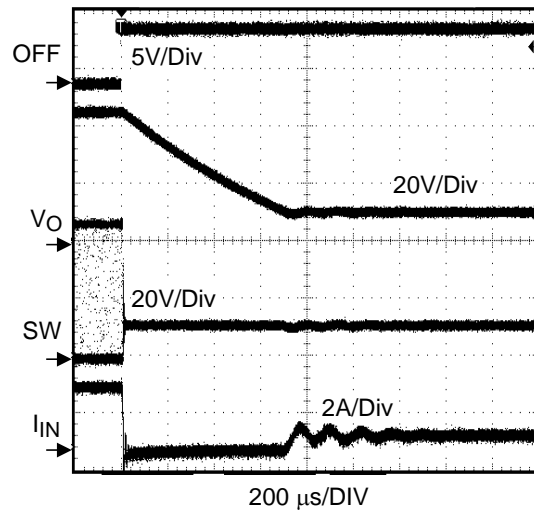


Figure 13. Shutdown
($V_{IN} = 12V$, $I_o = 0.5A$)

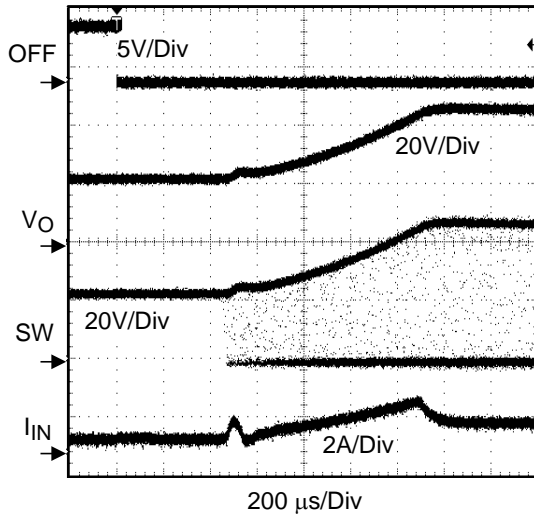


Figure 14. Start Up
($V_{IN} = 24V$, $I_o = 0.5A$)

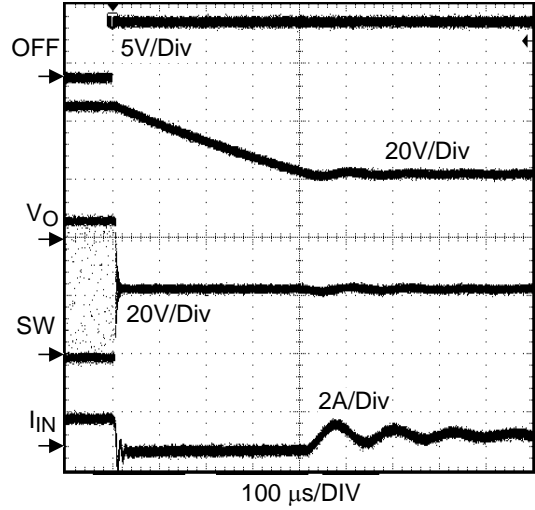


Figure 15. Shutdown
($V_{IN} = 24V$, $I_o = 0.5A$)

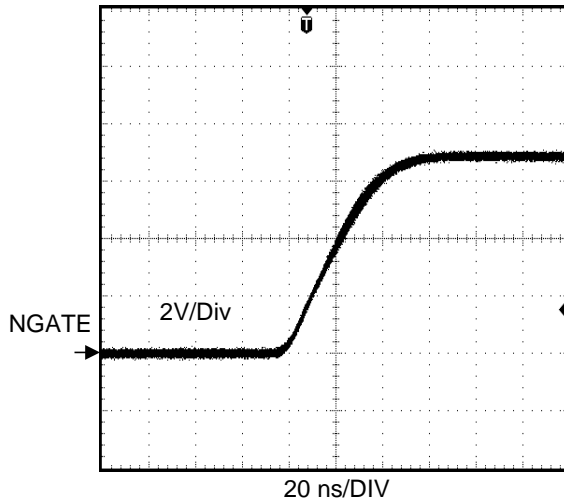


Figure 16. NGATE Rise Time
($V_{IN} = 12V$, no-load, Si4850DY)

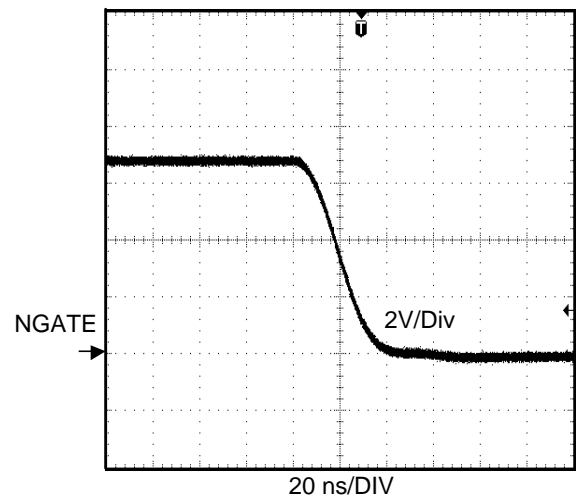


Figure 17. NGATE Fall Time
($V_{IN} = 12V$, no-load, Si4850DY)

10 Bill of Materials

ID	Part Number	Type	Size	Parameters	Qty	Vendor
U1	LM3430	Low-Side Controller	WSON-12		1	Texas Instruments
Q1	Si4850EY	MOSFET	SO-8	60V, 31mΩ, 27nC	1	Vishay
D1	CMSH3-60M	Schottky Diode	SMB	60V, 3A	1	Central Semi
L1	PF0553.333NL	Inductor	12.5x12.5 x8mm	33μH, 6.22A, 60mΩ	1	Pulse
Cin1, Cin2	C4532X7R1H475M	Capacitor	1812	4.7μF, 50V	2	TDK
Co1, Co2	C5750X7R2A475M	Capacitor	2220	4.7μF, 100V, 2mΩ	2	TDK
Cf	C3216X7R1E105K	Capacitor	1206	1μF, 25V	1	TDK
Cinx, Cox	C2012X7R2A104M	Capacitor	0805	100nF 100V	2	TDK
Cc1	VJ0805Y222KXXAT	Capacitor	0805	2.2nF 10%	1	Vishay
Cc2	VJ0805Y224KXXAT	Capacitor	0805	220nF 10%	1	Vishay
Css	VJ0805Y103KXXAT	Capacitor	0805	10nF 10%	1	Vishay
Csns	VJ0805Y102KXXAT	Capacitor	0805	1nF 10%	1	Vishay
Csyc	VJ0805A101KXXAT	Capacitor	0805	100pF 10%	1	Vishay
Rc	CRCW08051621F	Resistor	0805	1.62kΩ 1%	1	Vishay
Rfb1	CRCW08055360F	Resistor	0805	536Ω 1%	1	Vishay
Rfb2	CRCW08052002F	Resistor	0805	20kΩ 1%	1	Vishay
Rs1	CRCW0805331J	Resistor	0805	330Ω 5%	1	Vishay
Rs2	CRCW08054990F	Resistor	0805	499Ω 1%	1	Vishay
Rsns	WSL2010 0.1 1%	Resistor	2010	0.1Ω 1%, 0.5W	1	Vishay
Rt	CRCW08053402F	Resistor	0805	34kΩ 1%	1	Vishay
Ruv1, Ruv2	CRCW0805103J	Resistor	0805	10kΩ 5%	2	Vishay
VIN, Vo, GND, GND2	160-1026	Terminal	0.094"		4	Cambion
GND3, GND4, OFF, SYNC	160-1512	Terminal	0.062"		4	Cambion

11 PC Board Layout

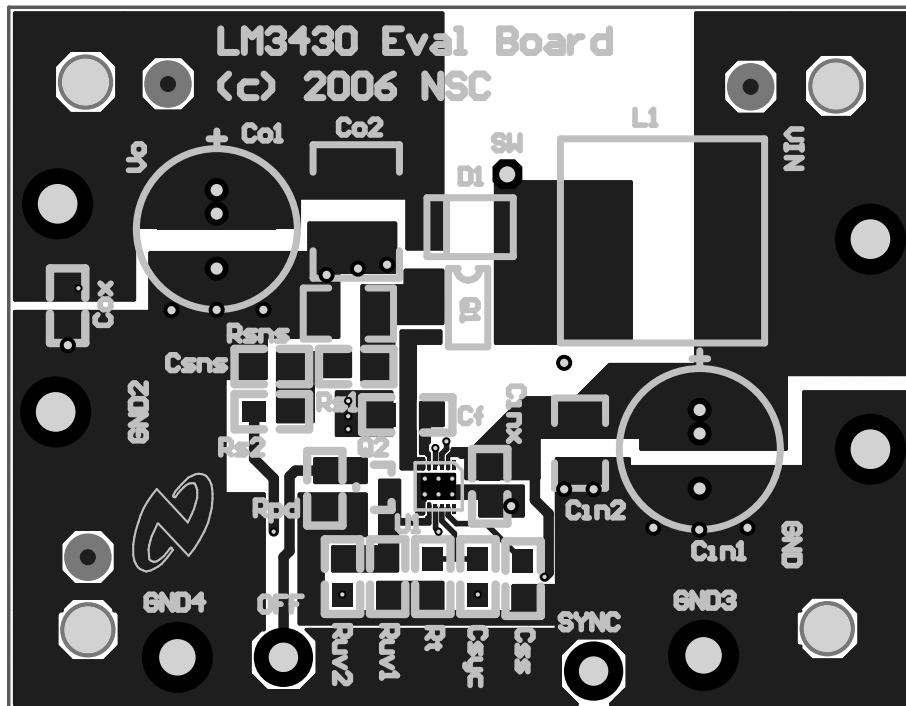


Figure 18. Top Layer and Top Overlay

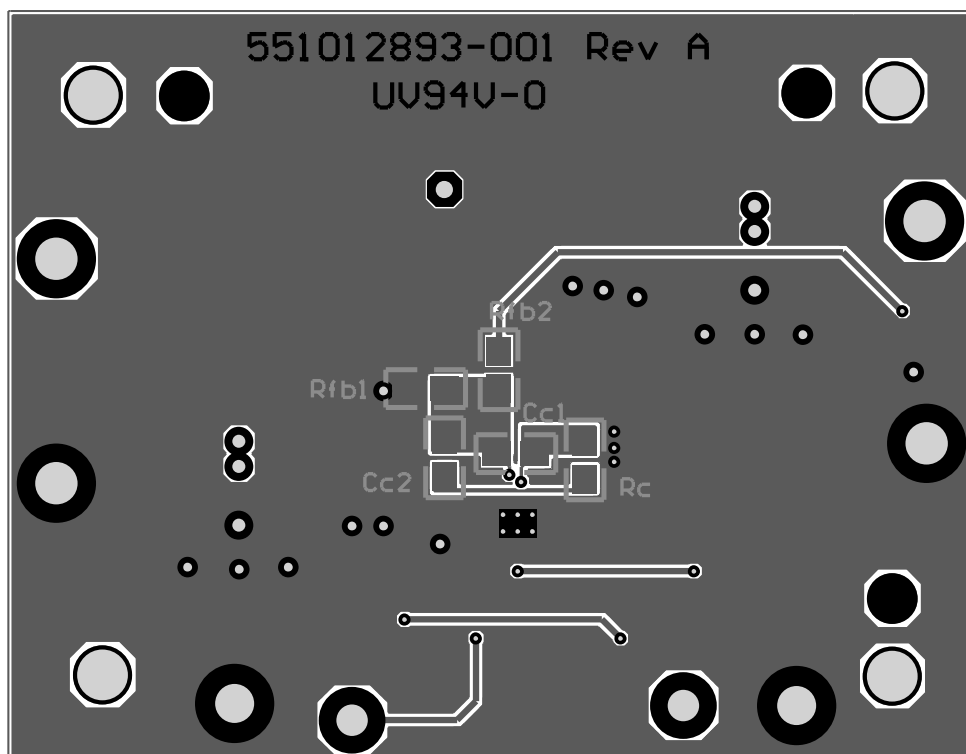


Figure 19. Bottom Layer

IMPORTANT NOTICE

Texas Instruments Incorporated and its subsidiaries (TI) reserve the right to make corrections, enhancements, improvements and other changes to its semiconductor products and services per JESD46, latest issue, and to discontinue any product or service per JESD48, latest issue. Buyers should obtain the latest relevant information before placing orders and should verify that such information is current and complete. All semiconductor products (also referred to herein as "components") are sold subject to TI's terms and conditions of sale supplied at the time of order acknowledgment.

TI warrants performance of its components to the specifications applicable at the time of sale, in accordance with the warranty in TI's terms and conditions of sale of semiconductor products. Testing and other quality control techniques are used to the extent TI deems necessary to support this warranty. Except where mandated by applicable law, testing of all parameters of each component is not necessarily performed.

TI assumes no liability for applications assistance or the design of Buyers' products. Buyers are responsible for their products and applications using TI components. To minimize the risks associated with Buyers' products and applications, Buyers should provide adequate design and operating safeguards.

TI does not warrant or represent that any license, either express or implied, is granted under any patent right, copyright, mask work right, or other intellectual property right relating to any combination, machine, or process in which TI components or services are used. Information published by TI regarding third-party products or services does not constitute a license to use such products or services or a warranty or endorsement thereof. Use of such information may require a license from a third party under the patents or other intellectual property of the third party, or a license from TI under the patents or other intellectual property of TI.

Reproduction of significant portions of TI information in TI data books or data sheets is permissible only if reproduction is without alteration and is accompanied by all associated warranties, conditions, limitations, and notices. TI is not responsible or liable for such altered documentation. Information of third parties may be subject to additional restrictions.

Resale of TI components or services with statements different from or beyond the parameters stated by TI for that component or service voids all express and any implied warranties for the associated TI component or service and is an unfair and deceptive business practice. TI is not responsible or liable for any such statements.

Buyer acknowledges and agrees that it is solely responsible for compliance with all legal, regulatory and safety-related requirements concerning its products, and any use of TI components in its applications, notwithstanding any applications-related information or support that may be provided by TI. Buyer represents and agrees that it has all the necessary expertise to create and implement safeguards which anticipate dangerous consequences of failures, monitor failures and their consequences, lessen the likelihood of failures that might cause harm and take appropriate remedial actions. Buyer will fully indemnify TI and its representatives against any damages arising out of the use of any TI components in safety-critical applications.

In some cases, TI components may be promoted specifically to facilitate safety-related applications. With such components, TI's goal is to help enable customers to design and create their own end-product solutions that meet applicable functional safety standards and requirements. Nonetheless, such components are subject to these terms.

No TI components are authorized for use in FDA Class III (or similar life-critical medical equipment) unless authorized officers of the parties have executed a special agreement specifically governing such use.

Only those TI components which TI has specifically designated as military grade or "enhanced plastic" are designed and intended for use in military/aerospace applications or environments. Buyer acknowledges and agrees that any military or aerospace use of TI components which have **not** been so designated is solely at the Buyer's risk, and that Buyer is solely responsible for compliance with all legal and regulatory requirements in connection with such use.

TI has specifically designated certain components as meeting ISO/TS16949 requirements, mainly for automotive use. In any case of use of non-designated products, TI will not be responsible for any failure to meet ISO/TS16949.

Products

Audio	www.ti.com/audio
Amplifiers	amplifier.ti.com
Data Converters	dataconverter.ti.com
DLP® Products	www.dlp.com
DSP	dsp.ti.com
Clocks and Timers	www.ti.com/clocks
Interface	interface.ti.com
Logic	logic.ti.com
Power Mgmt	power.ti.com
Microcontrollers	microcontroller.ti.com
RFID	www.ti-rfid.com
OMAP Applications Processors	www.ti.com/omap
Wireless Connectivity	www.ti.com/wirelessconnectivity

Applications

Automotive and Transportation	www.ti.com/automotive
Communications and Telecom	www.ti.com/communications
Computers and Peripherals	www.ti.com/computers
Consumer Electronics	www.ti.com/consumer-apps
Energy and Lighting	www.ti.com/energy
Industrial	www.ti.com/industrial
Medical	www.ti.com/medical
Security	www.ti.com/security
Space, Avionics and Defense	www.ti.com/space-avionics-defense
Video and Imaging	www.ti.com/video

TI E2E Community

e2e.ti.com