

1 PHOTO OF THE PROTOTYPE

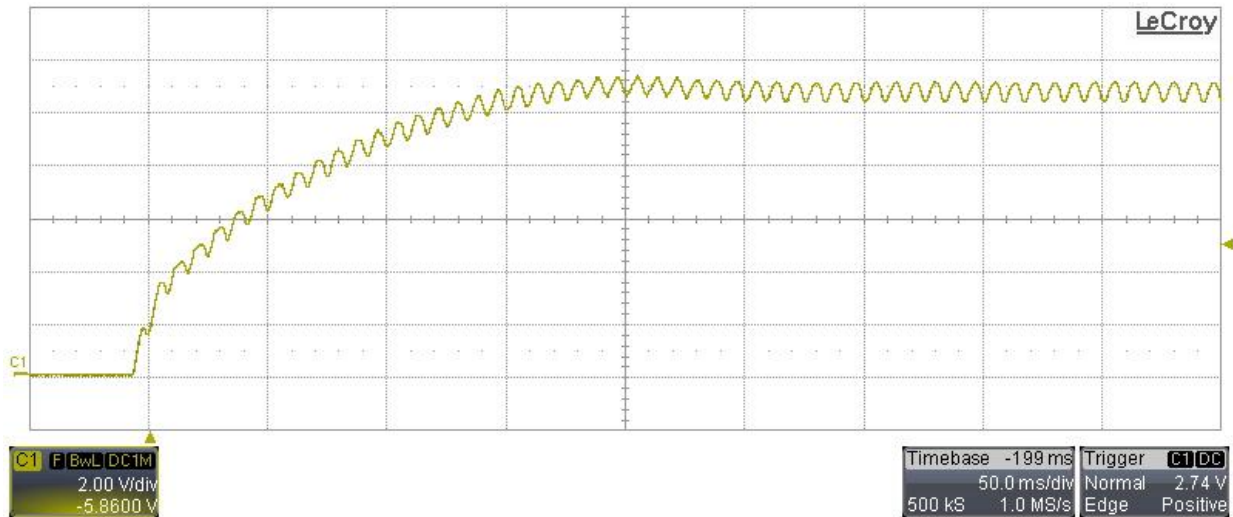


2 Startup

The output voltage behavior at startup is shown in the images below. The input voltage was set to 115Vac, 60Hz and 230Vac, 50Hz and the output loaded at 2A and 0A.

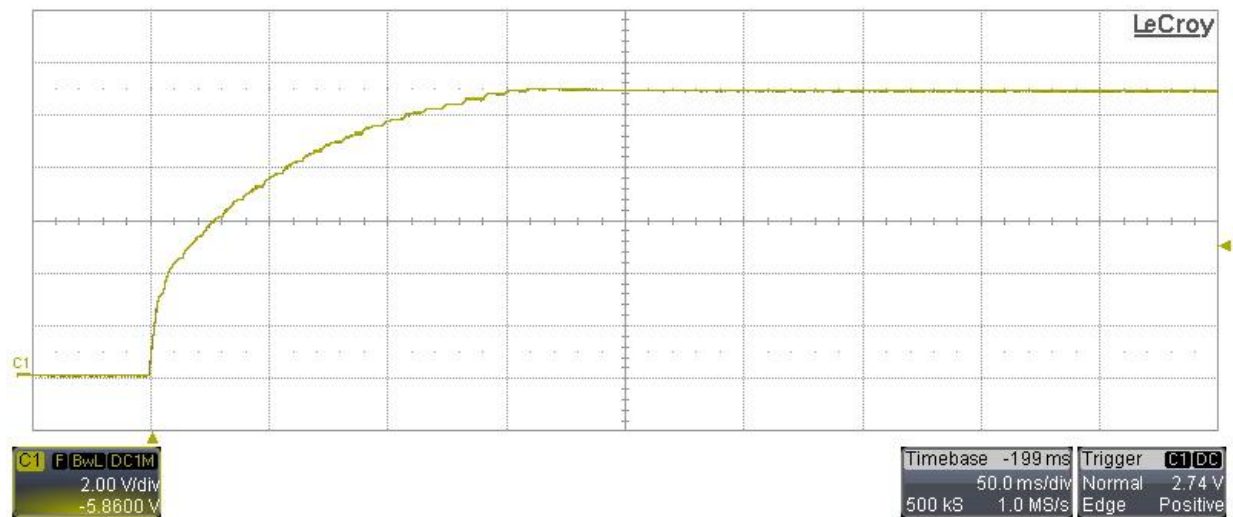
Channel 1: Output voltage (2V/div, 50ms/div, 20MHz BWL)

Vin = 115Vac, 60Hz, **2A load**



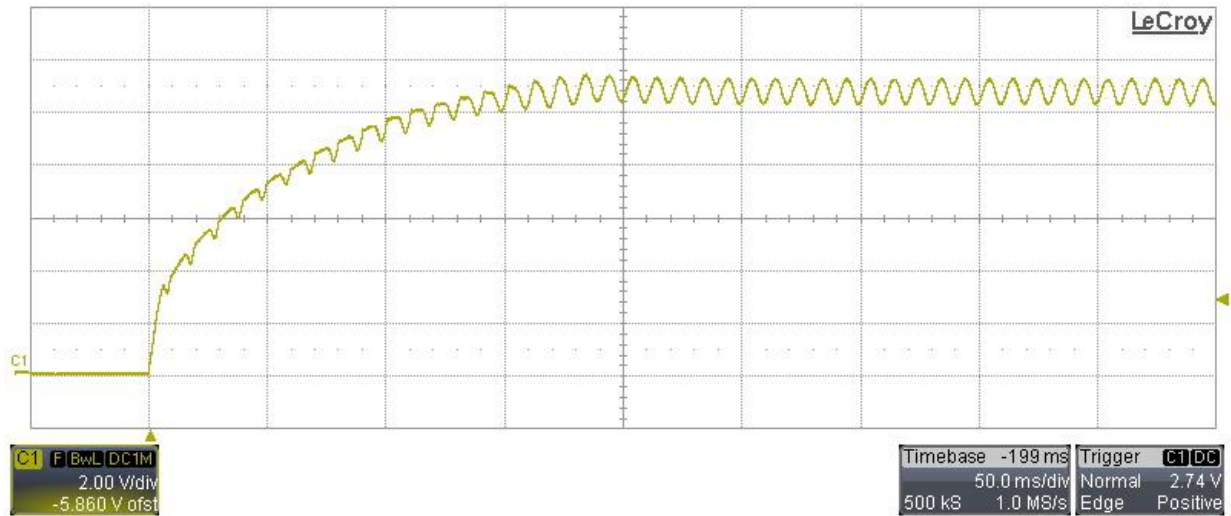
Channel 1: Output voltage (2V/div, 50ms/div, 20MHz BWL)

Vin = 115Vac, 60Hz, **0A load**



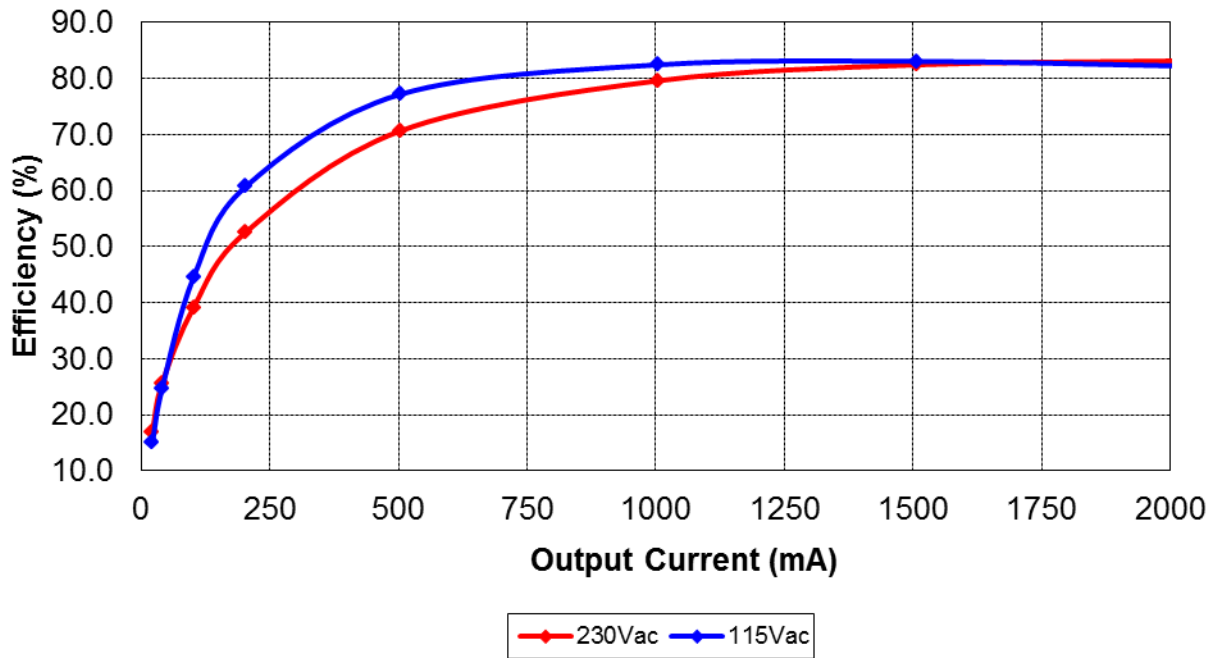
Channel 1: Output voltage (2V/div, 50ms/div, 20MHz BWL)

Vin = 230Vac, 50Hz, 2A load



3 Efficiency

The efficiency data are shown in the tables and graph below. The input and output conditions were the same as described in “startup” section.

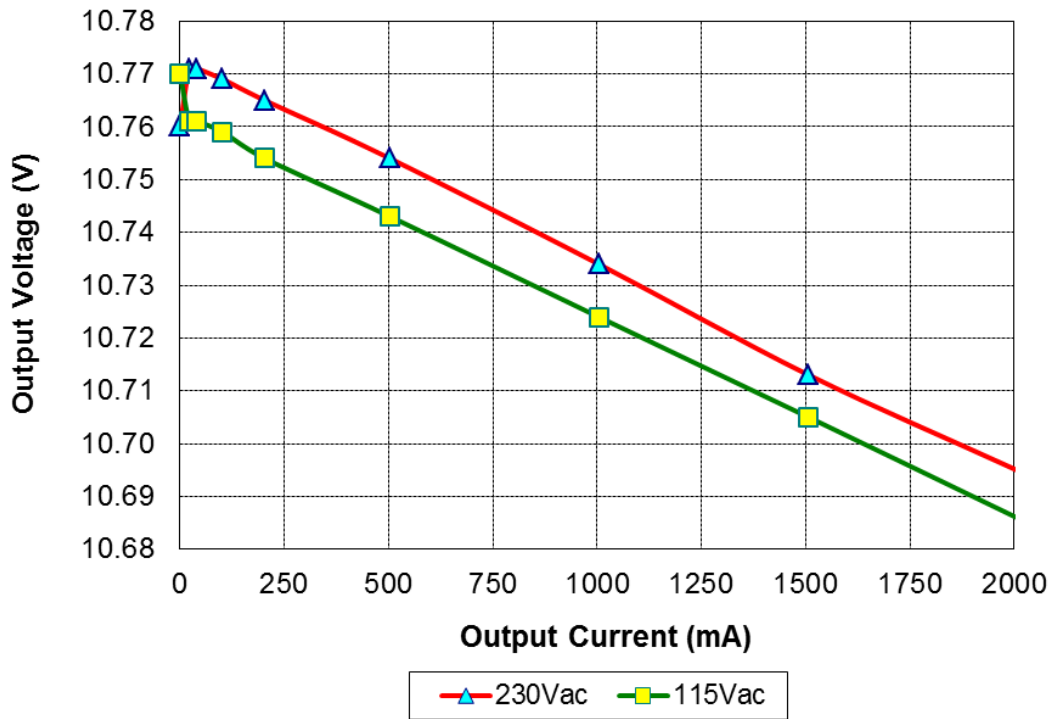


Iout (mA)	Vout (Vdc)	Pout (W)	Vin (Vac)	Pin (W)	Ploss (W)	Eff (%)	PF
0	10.770	0.00	115	0.25	0.25	0.00	0.276
21.9	10.761	0.24	115	1.56	1.33	15.08	0.753
40.6	10.761	0.44	115	1.78	1.34	24.61	0.775
102.1	10.759	1.10	115	2.47	1.37	44.56	0.841
203.5	10.754	2.19	115	3.61	1.42	60.71	0.910
503.5	10.743	5.41	115	7.01	1.60	77.14	0.972
1004	10.724	10.76	115	13.06	2.30	82.41	0.982
1507	10.705	16.13	115	19.43	3.30	83.03	0.983
2006	10.686	21.44	115	26.07	4.63	82.23	0.979

Iout (mA)	Vout (Vdc)	Pout (W)	Vin (Vac)	Pin (W)	Ploss (W)	Eff (%)	PF
0	10.760	0.00	230	0.55	0.55	0.00	0.330
21.8	10.771	0.23	230	1.39	1.15	16.94	0.419
40.6	10.771	0.44	230	1.71	1.27	25.57	0.461
102.1	10.769	1.10	230	2.81	1.71	39.17	0.607
203.5	10.765	2.19	230	4.17	1.98	52.57	0.645
503.5	10.754	5.41	230	7.67	2.25	70.61	0.775
1004	10.734	10.77	230	13.54	2.77	79.56	0.893
1507	10.713	16.14	230	19.59	3.45	82.41	0.934
2006	10.695	21.45	230	25.82	4.37	83.09	0.954

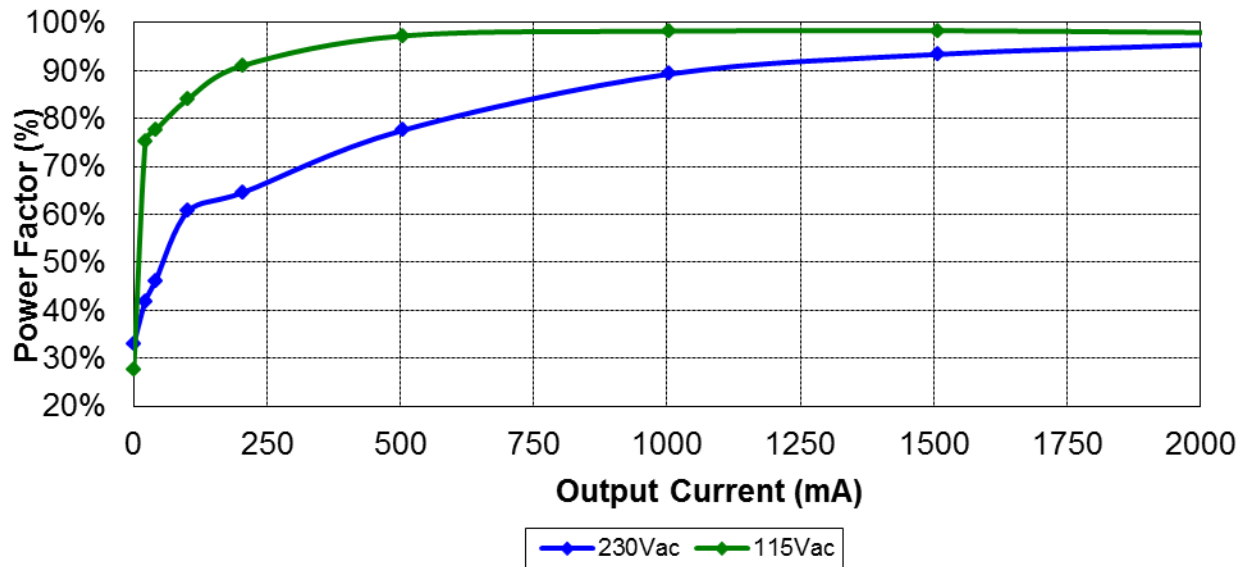
4 Output voltage regulation

The graph of the output voltage versus load current is plotted below.



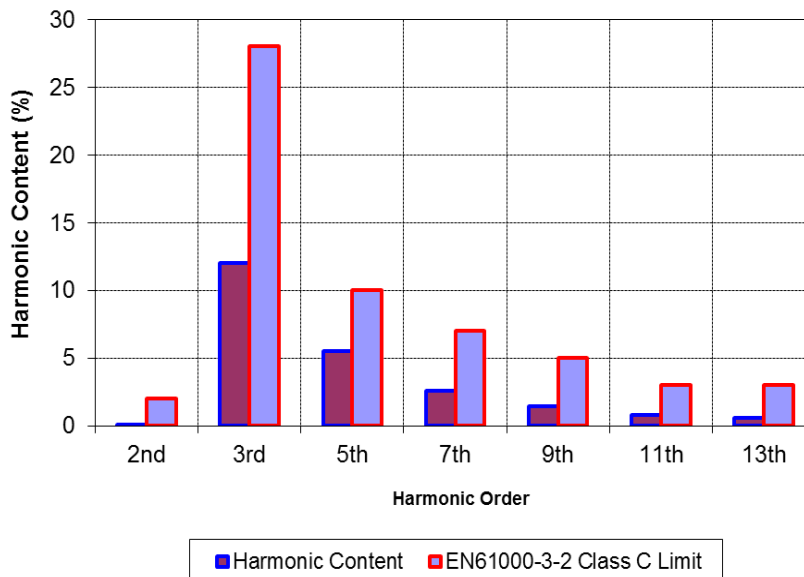
5 Power Factor

The Power Factor graph for the two input voltages 115V and 230V is shown below:



6 EN61000-3-2 Class C harmonics limits

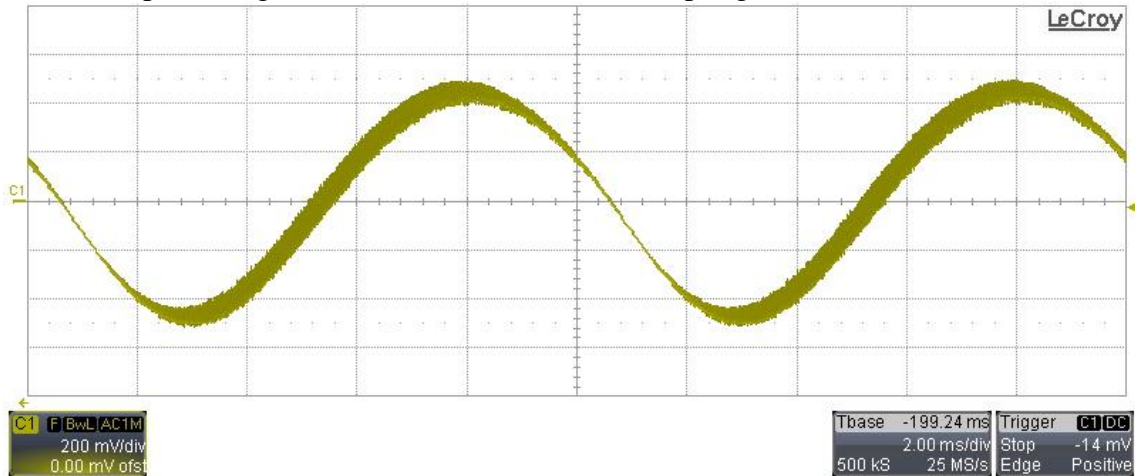
The graph below shows the limits of the harmonic content in the input current, compared to the first harmonic; the measurement shows values well below these limits. The input voltage was 230Vac, 50Hz and the output load set to 2A.



7 Output ripple voltage

The output ripple voltage is shown in the plot below. The input was set at 230Vac and the load set to 2A.

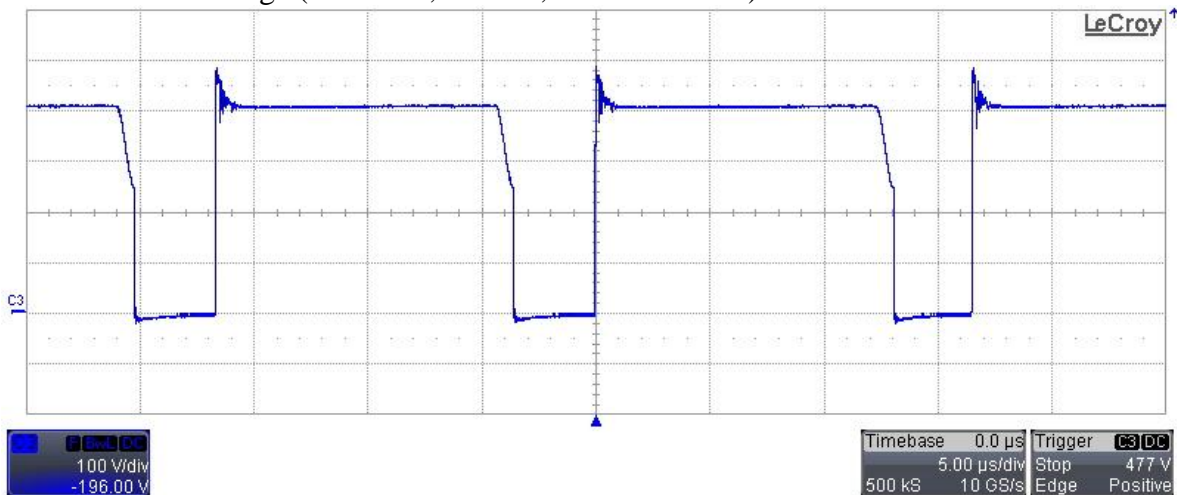
Channel 1: Output voltage (200mV/div, 2ms/div, AC coupling, 20MHz BWL).



8 Switching Node Waveform

The image below shows the voltage on the drain of the switching node (Q2) @ 230Vac input and full load.

Channel 3: Drain voltage (100V/div, 5us/div, 200MHz BWL).



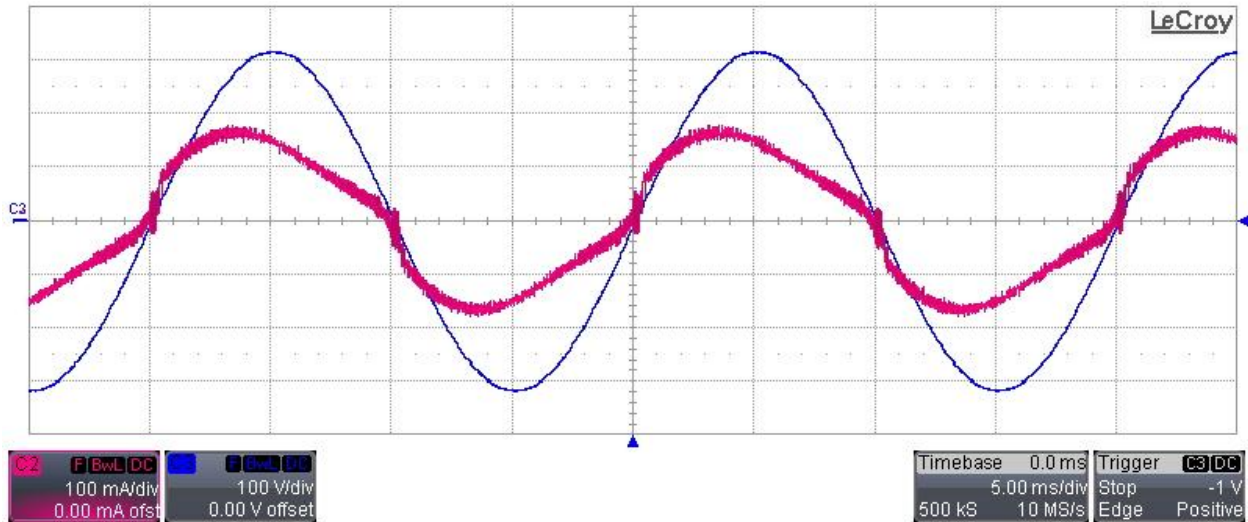
9 Input voltage and current waveforms

The images below show the input voltage and current while the source was set to the two different input voltages and the converter was fully loaded.

Channel 2: Input Current (100mA/div, 5ms/div, 20MHz BWL)

Channel 3: Input Voltage (100V/div, 20MHz BWL)

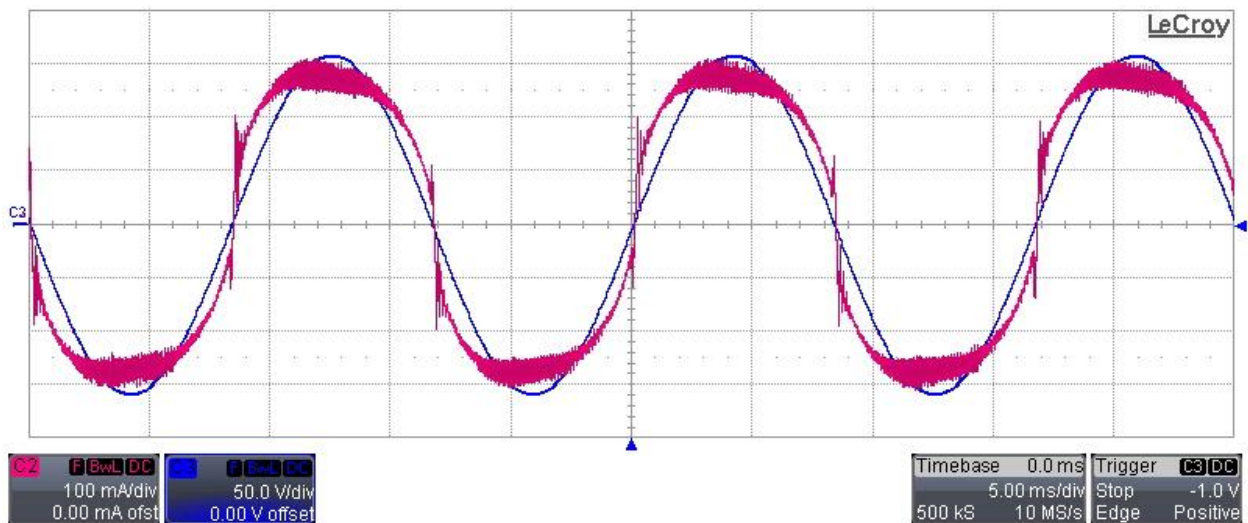
Vin = 230 Vac, 50Hz



Channel 2: Input Current (100mA/div, 5ms/div, 20MHz BWL)

Channel 3: Input Voltage (50V/div, 20MHz BWL)

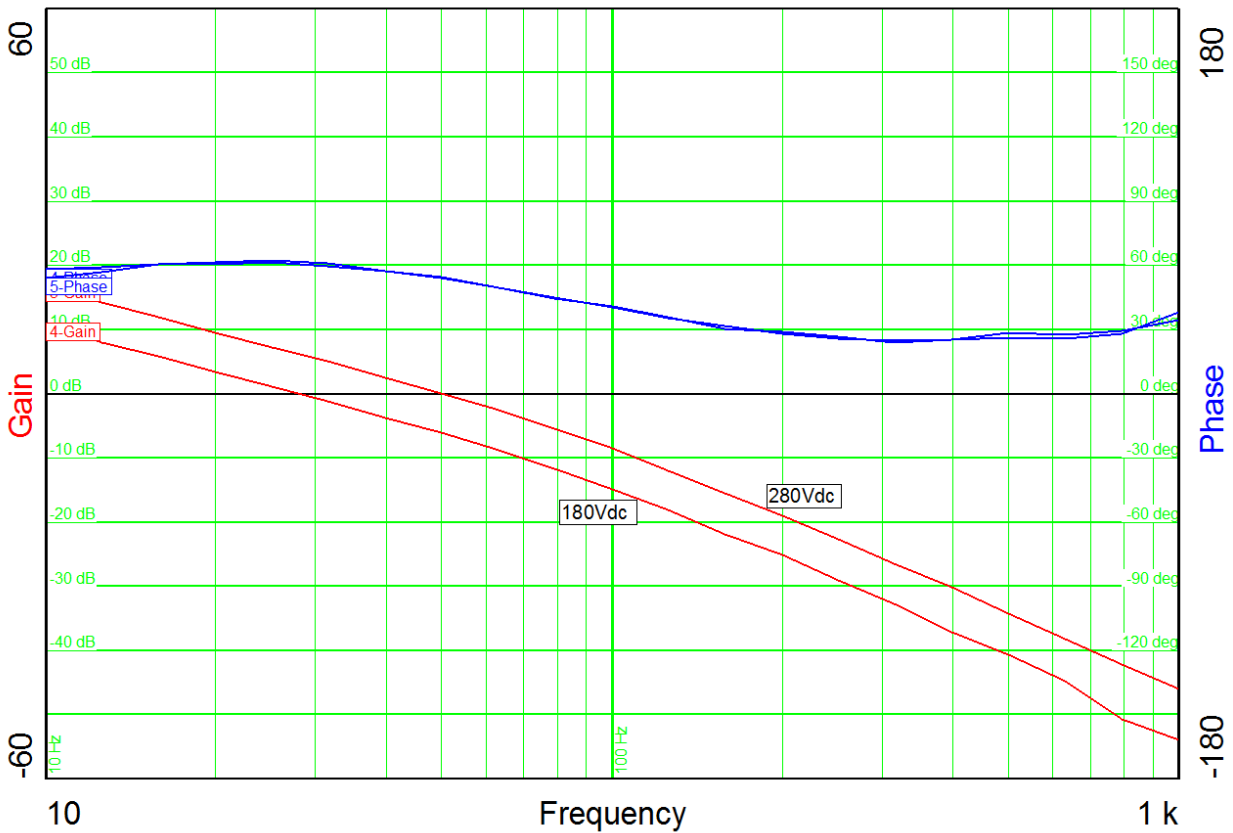
Vin = 115 Vac, 60Hz



10 Loop Response

The graph below shows the loop response of the converter measured at 180Vdc and 280Vdc input, while the load has been kept constant at 2A. The bandwidth (crossover frequency) and phase margin were respectively:

Vin	Crossover Frequency	Phase Margin
180Vdc	28.13Hz	61.58 deg.
280Vdc	50.24Hz	54.24 deg.



11 Thermal analysis

The thermal image has been taken in steady state condition and when the board was placed horizontally on the bench without any forced convection. The ambient temperature was 23C and the converter loaded @ 2A.

Thermal image @ 115Vac, 60Hz:

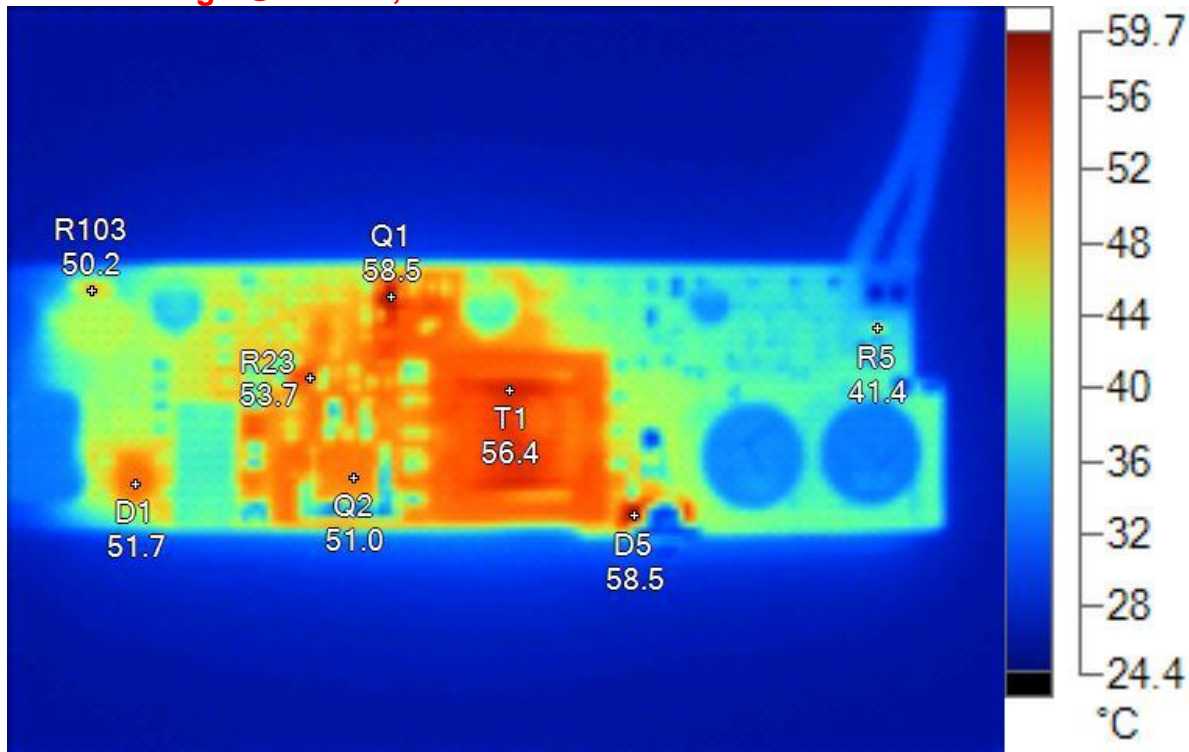
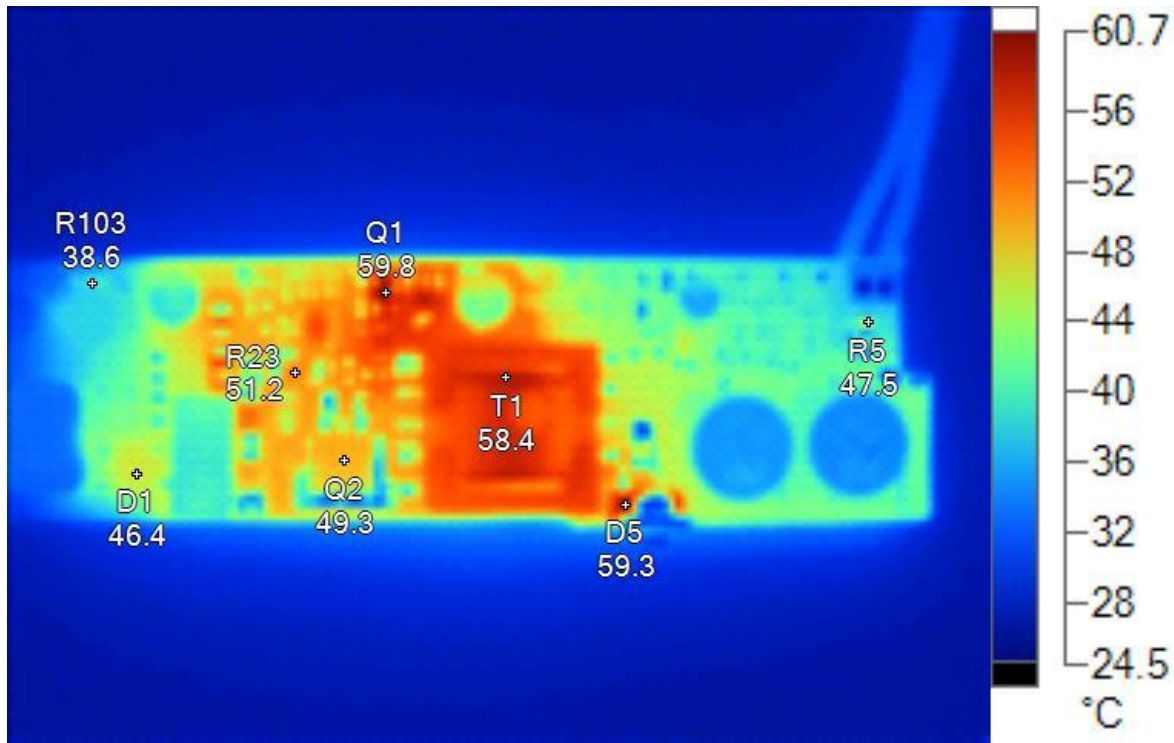


Image Info

Background temperature	20.0°C
Average Temperature	32.2°C
Image Range	25.4°C to 58.6°C
Camera Model	Ti40FT
Camera Manufacturer	Fluke
Image Time	3/3/2015 5:05:42 PM

Main Image Markers

Name	Temperature
D1	51.7°C
Q2	51.0°C
T1	56.4°C
Q1	58.5°C
D5	58.5°C
R5	41.4°C
R103	50.2°C
R23	53.7°C

Thermal image @ 230Vac, 50Hz:

Image Info

Background temperature	20.0°C
Average Temperature	32.8°C
Image Range	25.6°C to 59.8°C
Camera Model	Ti40FT
Camera Manufacturer	Fluke
Image Time	3/3/2015 5:10:25 PM

Main Image Markers

Name	Temperature
R103	38.6°C
D1	46.4°C
Q2	49.3°C
T1	58.4°C
Q1	59.8°C
R23	51.2°C
D5	59.3°C
R5	47.5°C

IMPORTANT NOTICE FOR TI REFERENCE DESIGNS

Texas Instruments Incorporated ("TI") reference designs are solely intended to assist designers ("Buyers") who are developing systems that incorporate TI semiconductor products (also referred to herein as "components"). Buyer understands and agrees that Buyer remains responsible for using its independent analysis, evaluation and judgment in designing Buyer's systems and products.

TI reference designs have been created using standard laboratory conditions and engineering practices. **TI has not conducted any testing other than that specifically described in the published documentation for a particular reference design.** TI may make corrections, enhancements, improvements and other changes to its reference designs.

Buyers are authorized to use TI reference designs with the TI component(s) identified in each particular reference design and to modify the reference design in the development of their end products. HOWEVER, NO OTHER LICENSE, EXPRESS OR IMPLIED, BY ESTOPPEL OR OTHERWISE TO ANY OTHER TI INTELLECTUAL PROPERTY RIGHT, AND NO LICENSE TO ANY THIRD PARTY TECHNOLOGY OR INTELLECTUAL PROPERTY RIGHT, IS GRANTED HEREIN, including but not limited to any patent right, copyright, mask work right, or other intellectual property right relating to any combination, machine, or process in which TI components or services are used. Information published by TI regarding third-party products or services does not constitute a license to use such products or services, or a warranty or endorsement thereof. Use of such information may require a license from a third party under the patents or other intellectual property of the third party, or a license from TI under the patents or other intellectual property of TI.

TI REFERENCE DESIGNS ARE PROVIDED "AS IS". TI MAKES NO WARRANTIES OR REPRESENTATIONS WITH REGARD TO THE REFERENCE DESIGNS OR USE OF THE REFERENCE DESIGNS, EXPRESS, IMPLIED OR STATUTORY, INCLUDING ACCURACY OR COMPLETENESS. TI DISCLAIMS ANY WARRANTY OF TITLE AND ANY IMPLIED WARRANTIES OF MERCHANTABILITY, FITNESS FOR A PARTICULAR PURPOSE, QUIET ENJOYMENT, QUIET POSSESSION, AND NON-INFRINGEMENT OF ANY THIRD PARTY INTELLECTUAL PROPERTY RIGHTS WITH REGARD TO TI REFERENCE DESIGNS OR USE THEREOF. TI SHALL NOT BE LIABLE FOR AND SHALL NOT DEFEND OR INDEMNIFY BUYERS AGAINST ANY THIRD PARTY INFRINGEMENT CLAIM THAT RELATES TO OR IS BASED ON A COMBINATION OF COMPONENTS PROVIDED IN A TI REFERENCE DESIGN. IN NO EVENT SHALL TI BE LIABLE FOR ANY ACTUAL, SPECIAL, INCIDENTAL, CONSEQUENTIAL OR INDIRECT DAMAGES, HOWEVER CAUSED, ON ANY THEORY OF LIABILITY AND WHETHER OR NOT TI HAS BEEN ADVISED OF THE POSSIBILITY OF SUCH DAMAGES, ARISING IN ANY WAY OUT OF TI REFERENCE DESIGNS OR BUYER'S USE OF TI REFERENCE DESIGNS.

TI reserves the right to make corrections, enhancements, improvements and other changes to its semiconductor products and services per JESD46, latest issue, and to discontinue any product or service per JESD48, latest issue. Buyers should obtain the latest relevant information before placing orders and should verify that such information is current and complete. All semiconductor products are sold subject to TI's terms and conditions of sale supplied at the time of order acknowledgment.

TI warrants performance of its components to the specifications applicable at the time of sale, in accordance with the warranty in TI's terms and conditions of sale of semiconductor products. Testing and other quality control techniques for TI components are used to the extent TI deems necessary to support this warranty. Except where mandated by applicable law, testing of all parameters of each component is not necessarily performed.

TI assumes no liability for applications assistance or the design of Buyers' products. Buyers are responsible for their products and applications using TI components. To minimize the risks associated with Buyers' products and applications, Buyers should provide adequate design and operating safeguards.

Reproduction of significant portions of TI information in TI data books, data sheets or reference designs is permissible only if reproduction is without alteration and is accompanied by all associated warranties, conditions, limitations, and notices. TI is not responsible or liable for such altered documentation. Information of third parties may be subject to additional restrictions.

Buyer acknowledges and agrees that it is solely responsible for compliance with all legal, regulatory and safety-related requirements concerning its products, and any use of TI components in its applications, notwithstanding any applications-related information or support that may be provided by TI. Buyer represents and agrees that it has all the necessary expertise to create and implement safeguards that anticipate dangerous failures, monitor failures and their consequences, lessen the likelihood of dangerous failures and take appropriate remedial actions. Buyer will fully indemnify TI and its representatives against any damages arising out of the use of any TI components in Buyer's safety-critical applications.

In some cases, TI components may be promoted specifically to facilitate safety-related applications. With such components, TI's goal is to help enable customers to design and create their own end-product solutions that meet applicable functional safety standards and requirements. Nonetheless, such components are subject to these terms.

No TI components are authorized for use in FDA Class III (or similar life-critical medical equipment) unless authorized officers of the parties have executed an agreement specifically governing such use.

Only those TI components that TI has specifically designated as military grade or "enhanced plastic" are designed and intended for use in military/aerospace applications or environments. Buyer acknowledges and agrees that any military or aerospace use of TI components that have **not** been so designated is solely at Buyer's risk, and Buyer is solely responsible for compliance with all legal and regulatory requirements in connection with such use.

TI has specifically designated certain components as meeting ISO/TS16949 requirements, mainly for automotive use. In any case of use of non-designated products, TI will not be responsible for any failure to meet ISO/TS16949.