

LAYER STACKUP

LAYER	DEFINITION	PREPREG/CORE THICKNESS (MILS)	FINISHED Cu WT.
	SILKSCREEN		
	SOLDERMASK		
1	SIGNAL		1/2 OZ
PREPREG		3.8	
2	PLANE		1/2 OZ
PREPREG		4.0	
3	SIGNAL		1/2 OZ
CORE		7.2	
4	PLANE		1/2 OZ
PREPREG		3.5	
5	SIGNAL		1/2 OZ
PREPREG		14.5	
6	SIGNAL		1/2 OZ
PREPREG		3.5	
7	PLANE		1/2 OZ
PREPREG		7.2	
8	SIGNAL		1/2 OZ
PREPREG		4.0	
9	PLANE		1/2 OZ
PREPREG		3.8	
10	SIGNAL		1/2 OZ
10			
	SOLDERMASK		
	SILKSCREEN		

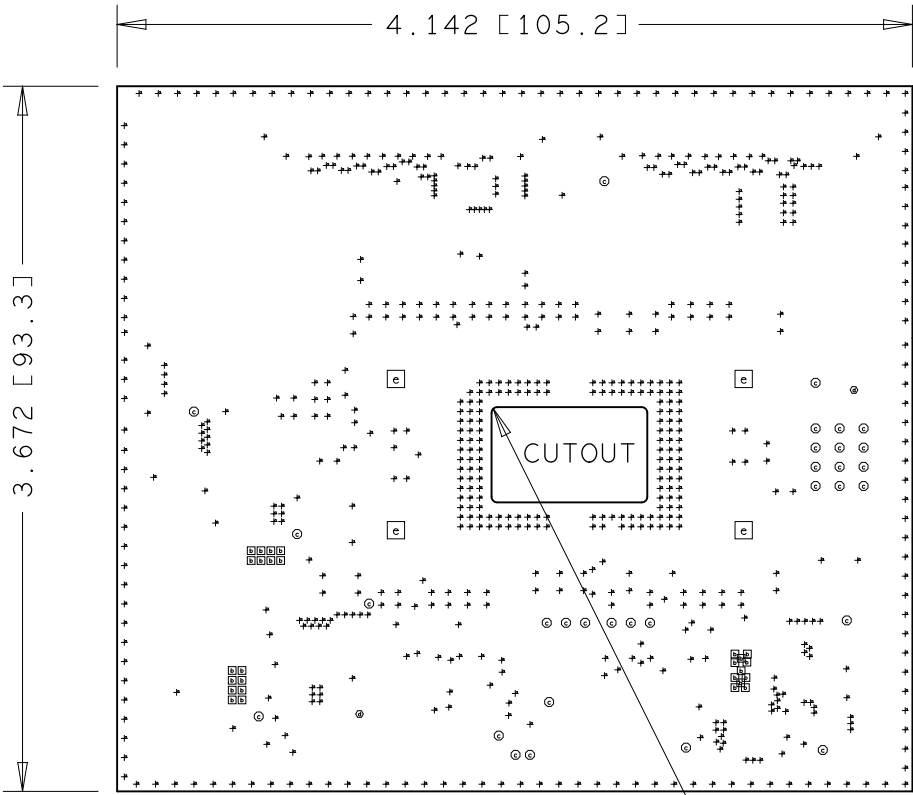
0.062 ± 10%

FAB NOTES:

- ALL DIMENSIONS ARE IN INCHES (MM).
- THE PWB SHALL BE FABRICATED TO IPC-6012, CLASS 2 AND WORKMANSHIP SHALL CONFORM TO IPC-A-600, CLASS 2. CURRENT REVISIONS.
- BOARD MATERIAL TO BE FR-4 (Isola FR408) EPOXY GLASS LAMINATE, AND IS TO MEET OR EXCEED MIL-P-13949. COLOR: NATURAL.
- ALL BOARDS MUST MEET OR EXCEED UL94V-0 REQUIREMENTS. PCB MUST BEAR THE UL94V-0 UL REGISTERED MATERIAL ID NUMBER.
- OVERALL BOARD THICKNESS TO BE .062" +/- 10% AND APPLIES AFTER ALL LAMINATION AND PLATING PROCESSES, MEASURED FROM COPPER TO COPPER.
- SEE STACKUP CHART FOR LAYER THICKNESS AND IMPEDANCE REQUIREMENTS. VENDOR MAY ADJUST DIELECTRIC THICKNESSES TO MEET IMPEDANCE REQUIREMENT.
- MAX. WARP & TWIST TO BE .01 INCHES PER INCH.
- VIAS SHOULD BE TEARDROPPED BY FAB VENDOR.
- SEE DETAIL-A FOR CUTOUT DETAILS

PROCESS NOTES:

- A) PLATE CIRCUITARY ON OUTER LAYERS TO 2-5uIN OF GOLD OVER 200uIN OF NICKEL. KNOOP HARDNESS 130-200.
B) SELECTIVE PLATING TO MIN 50uIN OF GOLD OVER 200uIN OF NICKEL. KNOOP HARDNESS 130-200 PER ARTWORK SLPT (SELECTIVE PLATE TOP)
- BOARD MUST BE ELECTRICALLY TESTED USING SUPPLIED IPC-D-356 NETLIST.
- APPLY LPI SOLDERMASK.
→ COLOR:BLUE
CONFORM TO IPC-SM-840, CLASS H. CURRENT REV. EXCEPT AS NOTED BELOW, SOLDERMASK ARTWORK IS SIZED 1:1 WITH SOLDER PAD FEATURES. VENDOR TO ADJUST FOR THEIR PROCESSES. MUST MAINTAIN WEB OF SOLDERMASK BETWEEN ALL EXPOSED PLATED SURFACES.
- APPLY LPI SILKSCREEN BOTH SIDES USING NON-CONDUCTIVE EPOXY INK. COLOR: WHITE.



R.030
4X

CUSTOMER NAME TEXAS INSTRUMENTS				DRAWN SVTRONICS	
BOARD NAME DLP471TE and DLP650TE EVMs			DESCRIPTION DRILL CHART FAB DWG		
BOARD NO.	REV B	DATE 26-03-2024	PRJ# DLP057	SH 19	OF 21

IMPEDANCE REQUIREMENTS		
LAYER	50 OHMS LINE WIDTH (MILS)	100 OHMS DIFFERENTIAL LINE WIDTH/SPACING (MILS)
1	7	5/7
3	5	4.5/7
6	5.25	
8	5	4.5/7
10	7	5/7

DRILL CHART: TOP to BOTTOM				
ALL UNITS ARE IN MILS				
FIGURE	SIZE	TOLERANCE	PLATED	QTY
+	10.0	+0.0/-10.0	PLATED	678
[e]	12.0	+3.0/-3.0	PLATED	27
@	28.0	+3.0/-3.0	PLATED	31
⊙	63.0	+3.0/-3.0	PLATED	2
[e]	220.0	+3.0/-3.0	NON-PLATED	4

