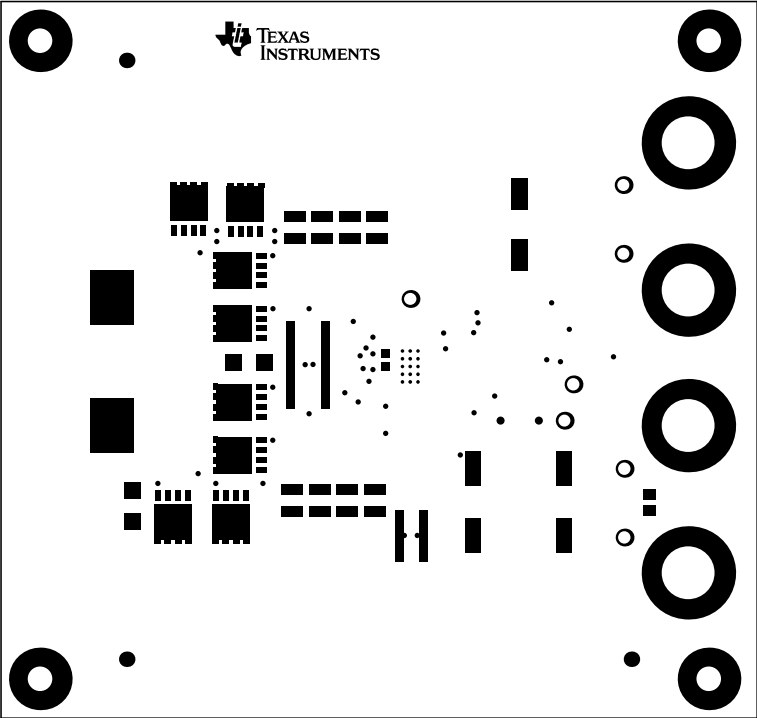
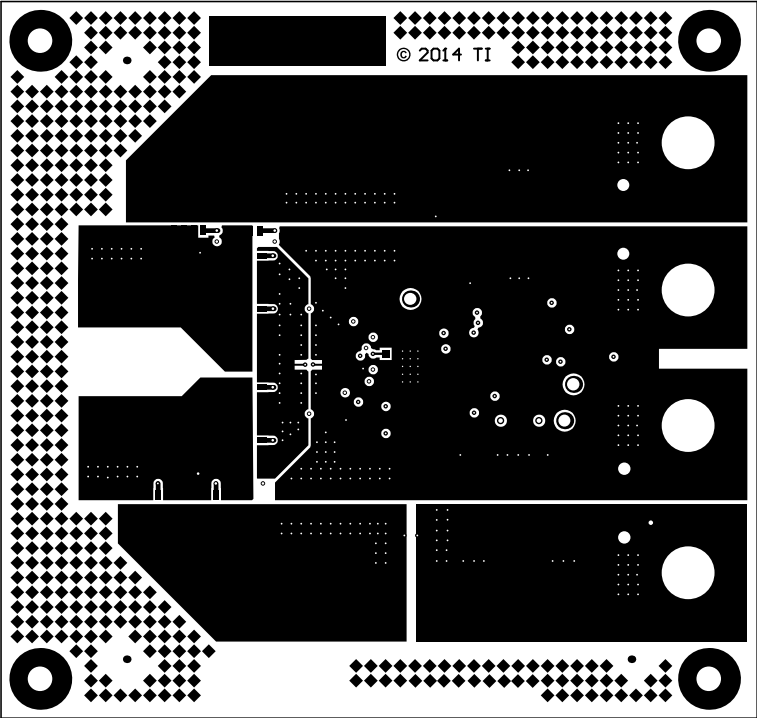


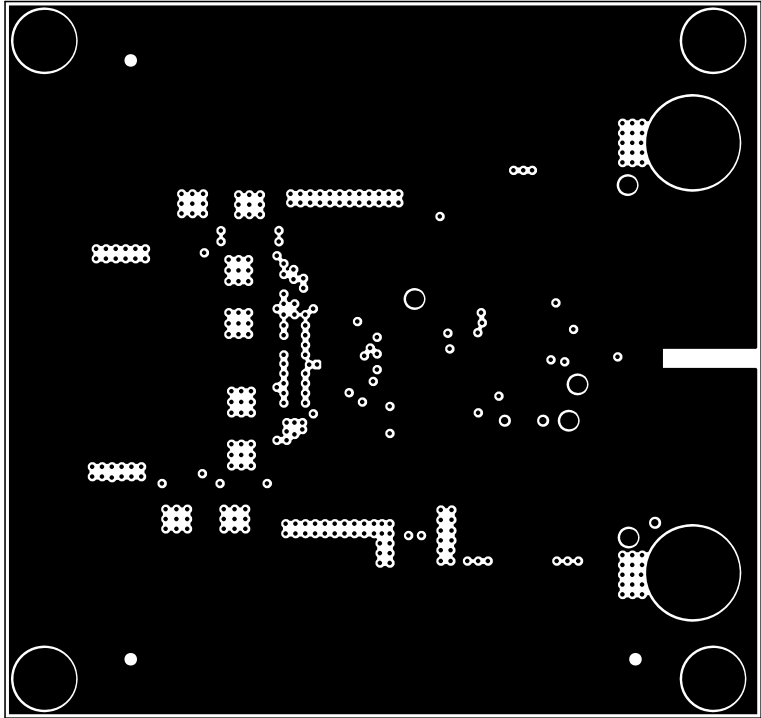
ALL ARTWORK VIEWED FROM TOP SIDE	BOARD #: SU601157	REV: A	SUN REV: Not In VersionControl
LAYER NAME = Top Overlay			
PLOT NAME = Top Overlay	GENERATED : 3/13/2015 3:33:06 PM	TEXAS INSTRUMENTS	



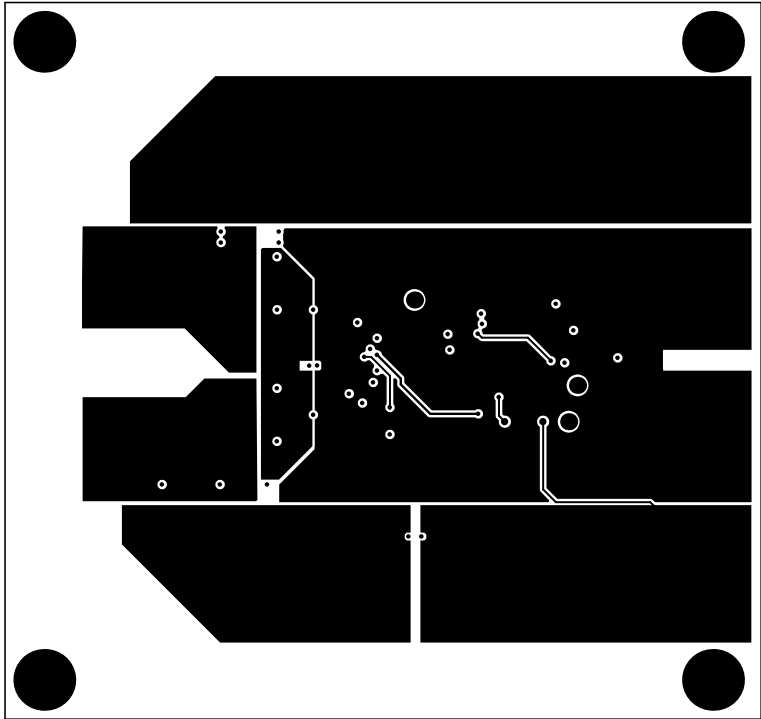
ALL ARTWORK VIEWED FROM TOP SIDE	BOARD #: SU601157	REV: A	SUN REV: Not In VersionControl
LAYER NAME = Top Solder			
PLOT NAME = Top Solder Mask	GENERATED : 3/13/2015 3:33:07 PM	TEXAS INSTRUMENTS	



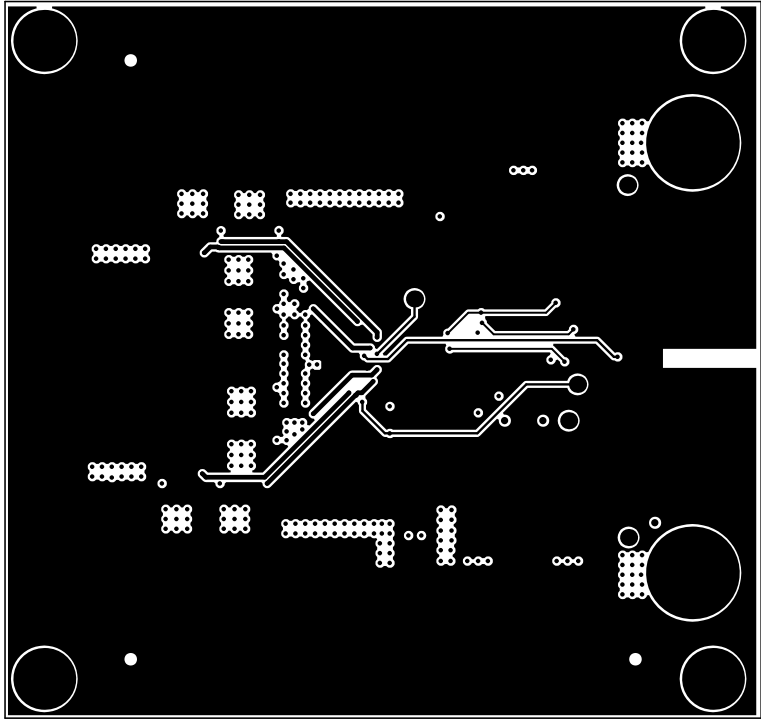
ALL ARTWORK VIEWED FROM TOP SIDE	BOARD #: SU601157	REV: A	SUN REV: Not In VersionControl
LAYER NAME = Top Layer			
PLOT NAME = Top Layer	GENERATED : 3/13/2015 3:33:07 PM	TEXAS INSTRUMENTS	



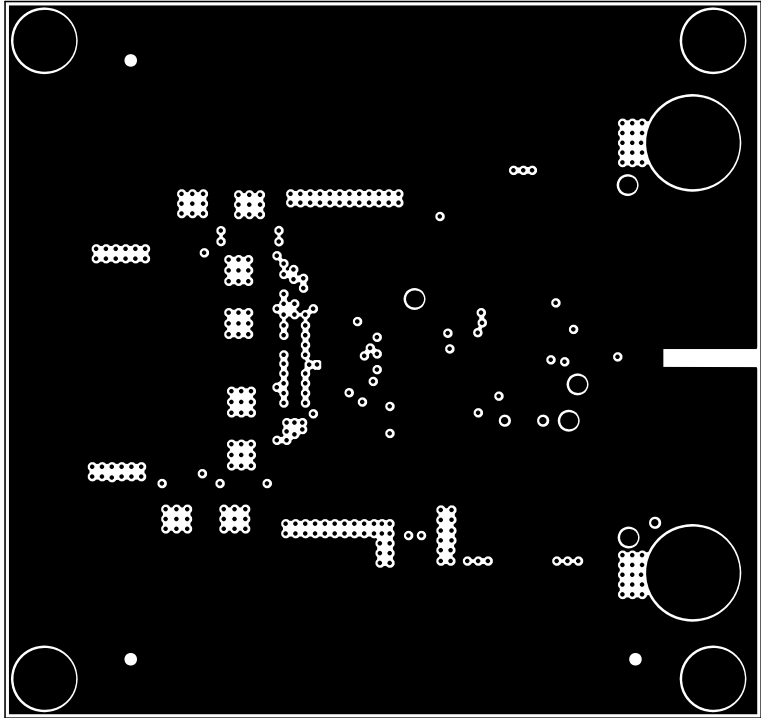
ALL ARTWORK VIEWED FROM TOP SIDE	BOARD #: SU601157	REV: A	SUN REV: Not In VersionControl
LAYER NAME = MidLayer1			
PLOT NAME = SignalLayer1	GENERATED : 3/13/2015 3:33:08 PM	TEXAS INSTRUMENTS	



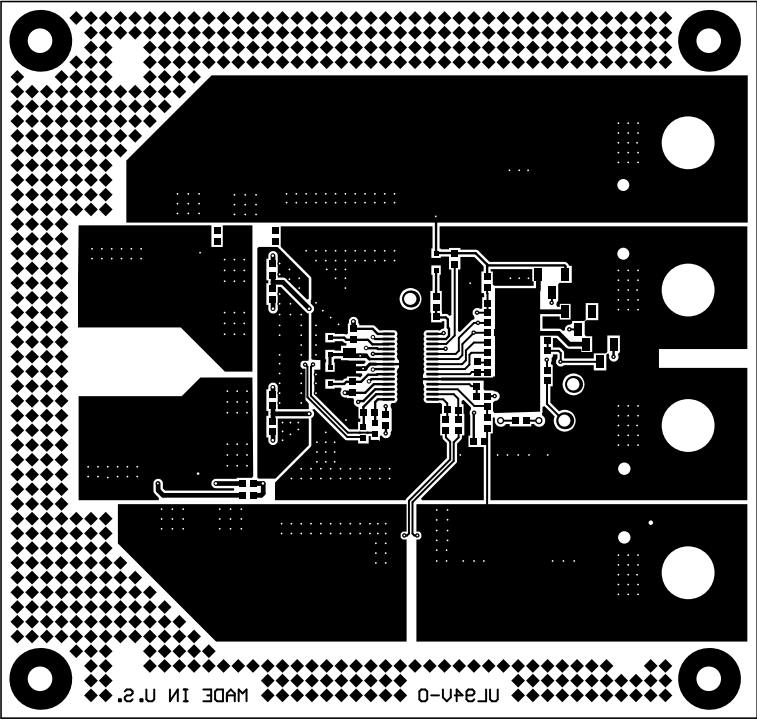
ALL ARTWORK VIEWED FROM TOP SIDE	BOARD #: SU601157	REV: A	SUN REV: Not In VersionControl
LAYER NAME = MidLayer2			
PLOT NAME = SignalLayer2	GENERATED : 3/13/2015 3:33:08 PM	TEXAS INSTRUMENTS	



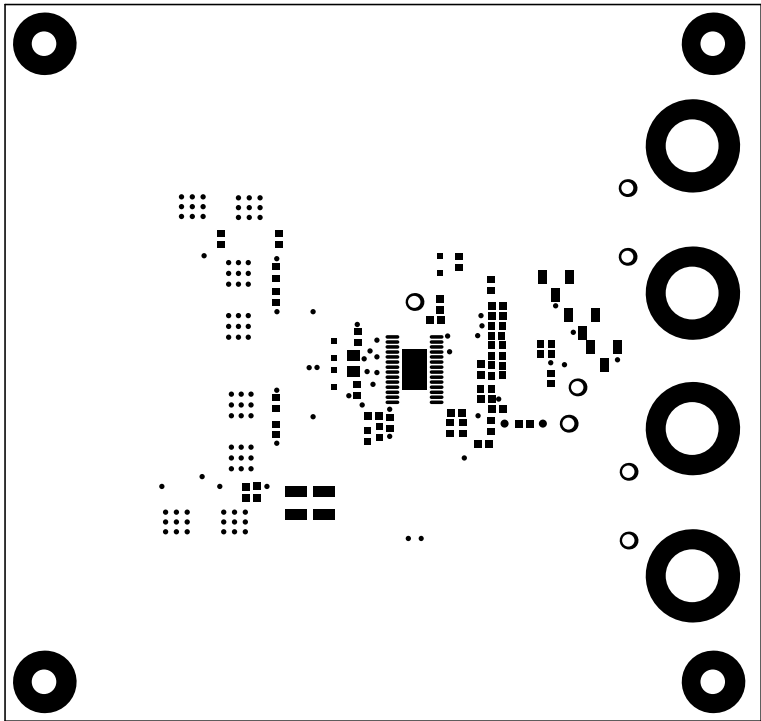
ALL ARTWORK VIEWED FROM TOP SIDE	BOARD #: SU601157	REV: A	SUN REV: Not In VersionControl
LAYER NAME = MidLayer3			
PLOT NAME = SignalLayer3	GENERATED : 3/13/2015 3:33:09 PM	TEXAS INSTRUMENTS	



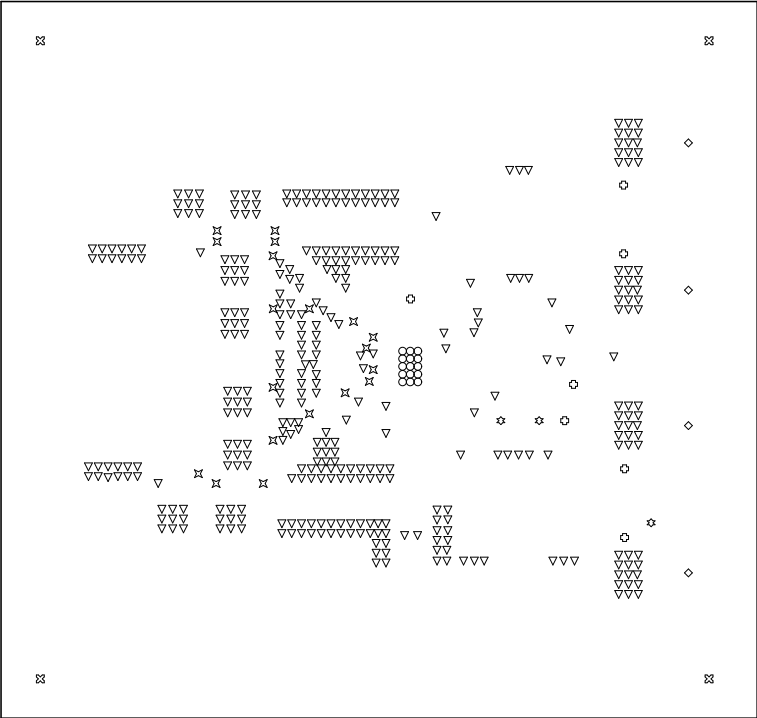
ALL ARTWORK VIEWED FROM TOP SIDE	BOARD #: SU601157	REV: A	SUN REV: Not In VersionControl
LAYER NAME = MidLayer4			
PLOT NAME = SignalLayer4	GENERATED : 3/13/2015 3:33:10 PM	TEXAS INSTRUMENTS	



ALL ARTWORK VIEWED FROM TOP SIDE	BOARD #: SU601157	REV: A	SUN REV: Not In VersionControl
LAYER NAME = Bottom Layer			
PLOT NAME = Bottom Layer	GENERATED : 3/13/2015 3:33:10 PM	TEXAS INSTRUMENTS	



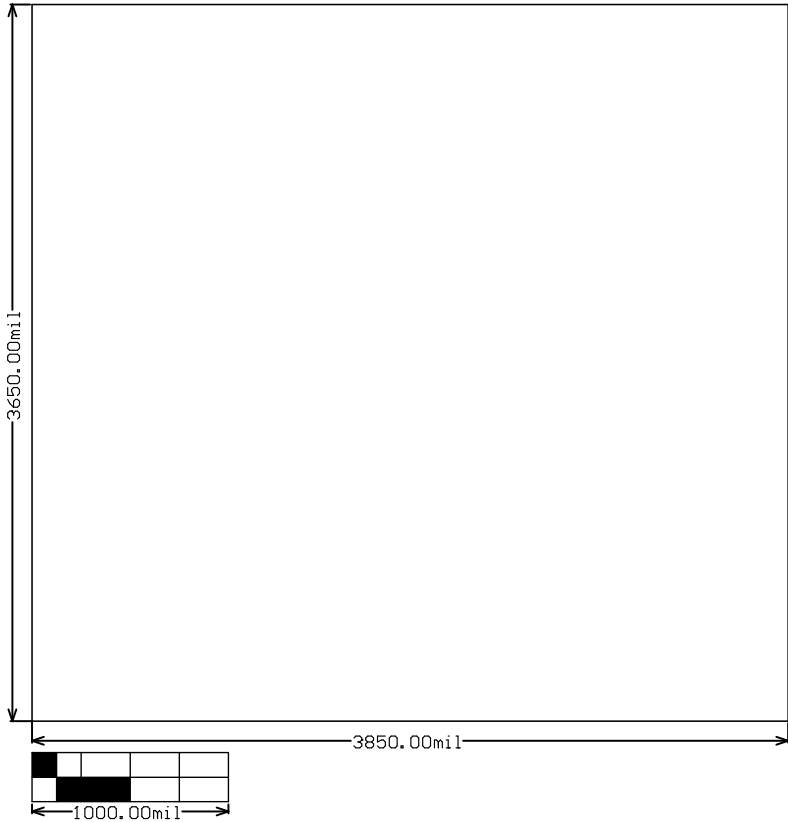
ALL ARTWORK VIEWED FROM TOP SIDE	BOARD #: SU601157	REV: A	SUN REV: Not In VersionControl
LAYER NAME = Bottom Solder			
PLOT NAME = Bottom Solder Mask	GENERATED : 3/13/2015 3:33:11 PM	TEXAS INSTRUMENTS	



Symbol	Hit Count	Tool Size	Plated	Hole Type
○	15	7.874mil (0.2mm)	PTH	Round
▽	369	10mil (0.254mm)	PTH	Round
×	19	14mil (0.356mm)	PTH	Round
☆	3	24mil (0.61mm)	PTH	Round
⊗	7	63mil (1.6mm)	PTH	Round
⊠	4	125.984mil (3.2mm)	PTH	Round
◇	4	270mil (6.858mm)	PTH	Round
421 Total				

Drill Table

ALL ARTWORK VIEWED FROM TOP SIDE	BOARD #: SU601157	REV: A	SUN REV: Not In VersionControl
LAYER NAME = Drill Drawing			
PLOT NAME = Drill Drawing	GENERATED : 3/13/2015 3:33:12 PM	TEXAS INSTRUMENTS	



ALL ARTWORK VIEWED FROM TOP SIDE	BOARD #: SU601157	REV: A	SUN REV: Not In VersionControl
LAYER NAME = M2 Board Dimensions			
PLOT NAME = Board Dimensions	GENERATED : 3/13/2015 3:33:13 PM	TEXAS INSTRUMENTS	